

# Comprehensive Everglades Restoration Plan (CERP)

## Master Recreation Plan

**Final Draft**

**June 1, 2009**

**U.S. Army Corps of Engineers  
701 San Marco Blvd  
Jacksonville, FL 32207**

## EXECUTIVE SUMMARY

### COMPREHENSIVE EVERGLADES RESTORATION PLAN MASTER RECREATION PLAN

The Comprehensive Everglades Restoration Plan (CERP) Master Recreation Plan (MRP) is based on the need for a program-wide perspective of the CERP recreation resources. The Master Recreation Plan is developed based on Congressional authority contained in the Water Resources Development Act (WRDA) of 1996, Section 528 (b)(1)(A)(i). Congressional authorization is also contained in WRDA 2000, Section 601 (b)(1)(A). The scope of the CERP MRP is to take a system-wide approach to identify, evaluate and address impacts of CERP implementation on existing recreational use within the South Florida ecosystem and evaluate potential for new recreational, public use and educational opportunities within CERP projects.

The CERP MRP will interface with all CERP-related programs, project activities, feasibility studies, critical projects and pilot projects. This program involvement will be based on the South Florida Water Management District (Sponsor) support as per the US Army Corps of Engineers laws, regulations, and policies, Design Agreement of 2000 and Sponsor policies. Many other projects are underway in South Florida that are not a part of the CERP which may add to the body of knowledge required to complete the CERP MRP. Many groups and initiatives will also play a role in the MRP development. A list of these planning activities and initiatives would be researched and considered in the MRP development.

**Figure 1. CERP Planning Regions.**



Source: USACE/SFWMD

The primary goal of the CERP MRP is to develop a comprehensive plan for addressing recreation needs within the C&SF Project consistent with the project's authorized purpose. The MRP is the basic document guiding agency responsibilities pursuant to federal laws to preserve, conserve, restore, maintain and develop the project lands, waters and associated resources. The CERP MRP will be a dynamic planning tool, outlining recreational opportunities. It will be flexible and based upon changing conditions. The CERP MRP deals with program-wide policies and design recommendations for individual CERP projects on a regional basis.

## FINAL DRAFT

Master Recreation Plan program objectives include:

1. Provide the responses to regional needs, resource capabilities and sustainability, and expressed public interests and desires consistent with authorized purposes.
2. Contribute towards providing restoration compatible recreational opportunities, public access, activities and diversity within CERP projects.
3. Emphasize the particular quantity, quality, character and potential of each of the nine CERP regions when developing recreational, educational and public access opportunities.
4. To the extent possible, minimize CERP Project adverse impacts to existing recreational uses.
5. Seek consistency and compatibility with national, state and regional programs, goals and objectives.
6. Identify public, private and intergovernmental partnerships to enhance and promote recreational, educational and public access opportunities.
7. Develop and implement guidelines for recreational planning needs and impact assessments, on a regional basis, for integration into the CERP Project Implementation Report (PIR), Pilot Project Design Report (PPDR) and feasibility study (FS) processes for each specific project.
8. Develop measures to assess change in recreational opportunities and types of uses as it relates to CERP.

The MRP and the master planning process provide a framework and a methodology for gathering and presenting existing recreation resources information for analysis, decision-making, planning and implementation. The CERP MRP identifies requirements, priorities and alternatives and serves as a program management plan. The CERP MRP addresses recreation impacts related to problems associated with CERP projects on a regional basis and indicates resource objectives tailored to initiating management procedures aimed at solving those problems regionally.

The MRP will assist the PIR implementation process by providing federal, state, local and public recreation planning information. Regional Recreation “Idea” Plans are provided in Chapter 8 – Regional Conceptual Recreation Plans (RCRPs), for Project Delivery Teams (PDTs) to use in developing recreation concept plans for Project Implementation Reports (PIRs) with linkages and partnering opportunities. The MRP would provide existing recreation conditions, future recreation needs, recreation issues and trend information as gathered from the public outreach meetings and other sources. The MRP would provide information to assist with minimizing adverse affects to existing recreation, recreation planning and recreation partnering opportunities.

The RCRPs were developed with a several step process. Geographic Information System (GIS) was used to complete regional analysis (based on the Florida Statewide Comprehensive Outdoor Recreation Plan - SCORP 2000, existing outdoor recreation supply, demand, trends and PDT decisions on suitability criteria, weighting and scaling) and produce recreation suitability mapping for “without project conditions” and “with project conditions.” The maps were ground-truthed at public, stakeholder and disadvantaged meetings in 2006. Data was also gathered on recreation trends, needs,

## FINAL DRAFT

existing conditions and future demand in 2008. This information was synthesized into GIS-based draft RCRPs that were presented to the public, stakeholders and disadvantaged in meetings throughout 2008 for further groundtruthing. The draft RCRPs were finalized once public, stakeholders and disadvantaged input was quantified and synthesized.

The CERP MRP will be used to develop compatibility considerations within CERP requirements to manage resources within the broad public interest. This information will be developed with assistance from PDTs. The CERP MRP seeks to:

1. Promote protection, conservation and enhancement of important resources including natural, cultural and man-made.
2. Assure a balance between the competition for public and private use of available land and water resources.
3. Coordinate national, state, regional and local recreation objectives.

The CERP MRP process would focus on three primary areas of analysis and consideration:

1. Program resource capabilities and sustainability.
2. Program and ecosystem restoration needs.
3. Expressed public interest and desires

The CERP MRP is divided into five parts as follows:

1. Part I describes the scope of the MRP and the overall involvement of the Corps and the Sponsor in developing, operating and maintaining program infrastructure and in managing the associated resources. In addition, responsibilities of other agencies participating in program development and resource management are included.
2. Part II consists of inventory of cultural and natural resources to assist in establishing the setting for plan recommendations.
3. Part III evaluates both current and future recreation use of program resources. It examines the existing supply of recreation facilities, resource carrying capacity and estimated facility needs.
4. Part IV presents the combined recommendations of the planning analysis, public input and agency coordination. These recommendations are organized into three formats: Resource Use Objectives, the project-wide Land Management Plans for specific recreation areas and the Resource Management Guidelines.
5. Part V covers the implementation of the recommendations in the MRP.

### **PROGRAM ASSUMPTIONS and CONSTRAINTS.**

#### **Program Assumptions.**

1. It is assumed that all applicable federal, state and local laws and regulations will be followed according to Corps and SFWMD responsibilities concerning recreation planning for the Comprehensive Everglades Restoration Plan.
2. It is assumed that the CERP Recreation Planning Team (RPT) will be responsible for monitoring and evaluating system-wide recreation impacts, both positive and negative, to public access and recreational facilities and opportunities throughout

## FINAL DRAFT

the implementation of CERP. Recreation planning will not be a function of Restoration Coordination and Verification (RECOVER). RECOVER conducts scientific and technical evaluations and assessments for improving CERP's ability to restore, preserve, and protect the south Florida ecosystem while providing for the region's other water-related needs.

3. It is assumed that the related CERP projects currently completing recreation inventory and analysis will provide the information stated in this report in a timely manner.
4. It is assumed that the Master RPT will develop recreation impact analysis guidance for PDTs to follow during the PIR process until the MRP is complete.
5. It is assumed that although the MRP is a program-level activity, many of the requirements for the CERP projects will apply to the master planning effort.
6. It is assumed that Public Law 101-640, The Water Resources Development Act of 1990, will be considered during CERP implementation. Section 313 of the Act provides that any maintenance, repair, rehabilitation or reconstruction that results in a change in configuration of a structure should be carried out in a manner, which to the maximum extent possible, will not adversely any existing recreational use even if the recreational use was not an authorized purpose. If the recreation resources are adversely affected, they may be restored or alternatives provided for comparable recreational use. Costs incurred shall be allocated to recreation and shall be payable by the beneficiaries of the recreation.
7. It is assumed that PDTs will analyze impacts to recreation and provide the information to the RPT. The RPT will be responsible for collecting any additional data, completing the economical analysis, determining recreation demand, and preparing a design and cost estimate at the feasibility level once the PDT has determined the preliminary selected alternative.
8. It is assumed for future CERP projects, economic analysis, recreation demand, design and cost estimates will be based on the CERP recommended plan as described in D13R of the Yellowbook, 1999.

### **Program Constraints.**

1. Public Law 89-72, The Federal Water Project Recreation Act of 1965, requires:
  - that full consideration be given to opportunities for recreation and fish and wildlife enhancement;
  - that recreation planning be based on coordination of use with existing and planned federal, state and local regional recreation;
  - the non-federal, administration of recreation and enhancement areas be encouraged.
  - without a cost-sharing sponsor, facilities may not be provided for recreation and fish and wildlife enhancement except those justified to serve other project purposes or as needed for public health and safety.
2. Public Law 99-662, The Water Resources Development Act of 1986, defines the basis for sharing financial responsibilities in joint federal/non-federal water resources development projects.
3. Land acquisition and easement rights may limit the opportunities for public access and recreational facilities.

## FINAL DRAFT

4. The Corps is limited with recreational facilities that can be cost-shared with partners or local sponsors per Engineering Regulation (ER) 1105-2-100, dated 22 April 2000.
5. The master recreation planning process will take two to three years. Many of the CERP Projects are in PIR phase and will have conducted recreational analysis prior to completion of a MRP.
6. Vend-able recreation features cannot be cost-shared by the Corps of Engineers.

### **SUMMARY OF AGENCY RESPONSIBILITIES.**

The Corps and the SFWMD will participate in all phases of the program execution. For each activity listed in the work breakdown structure (WBS), a responsible office is identified for completing that activity or product. Individual offices within Corps and the SFWMD will have the lead on executing individual activities.

For the MRP effort, the Corps and SFWMD have the following responsibilities:

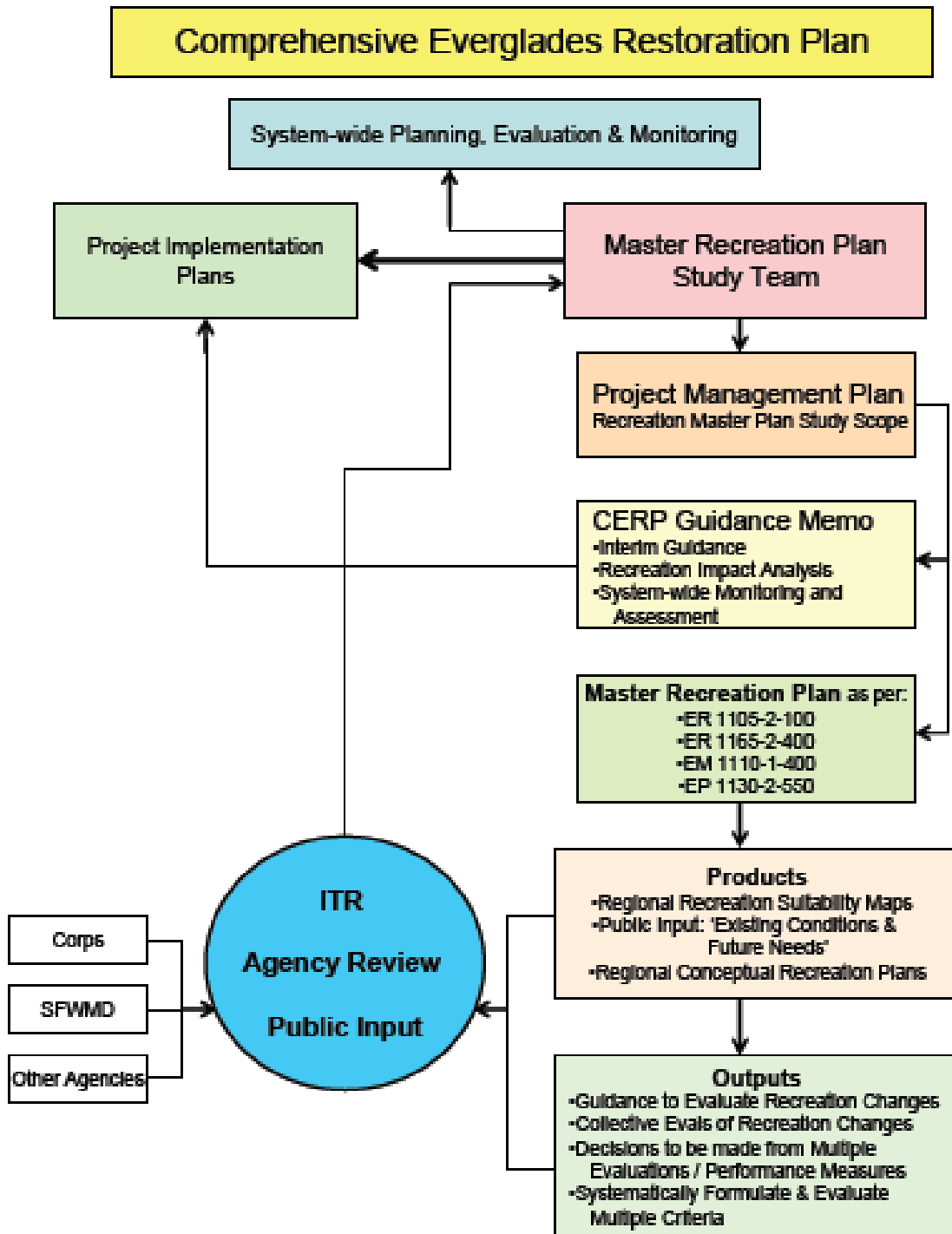
**Table 1. Summary of Agency Responsibilities.**

MRP Planning Effort	SFWMD	USACE
MRP Plan Formulation		
Inventory Collection	LEAD	SUPPORT
Recreation Program Analysis	SUPPORT	LEAD
Land Allocation & Classification	NA	NA
Formulation of Conceptual Recreation Development Plans	SUPPORT	LEAD
System-wide Evaluation/Monitoring	LEAD	SUPPORT
Public Outreach	SUPPORT	LEAD

Source: CERP Master Recreation Plan, Program Management Plan, 2004

The CERP MRP Flow Diagram displays the process of Master Recreation Plan product development, coordination and review steps for the CERP programmatic effort. See Figure 1 below.

Figure 1. CERP Master Recreation Plan Flow Diagram.



# FINAL DRAFT

## ACRONYMS

AAR	After Action Report
A/E	Architect/Engineer
Apr	April
ARCMaP	A component of ESRI's ArcGIS Geographical Information System
ARCVIEW	Desktop GIS for Mapping, Data Integration, and Analysis
ATV	All Terrain Vehicle
Aug	August
BPJ	Best Professional Judgment
BEBR	Bureau of Economics and Business Research, University of Florida
CERP	Comprehensive Everglades Restoration Plan
CCO	Corporate Communication Office
CGM	CERP Guidance Memorandum
Corps	U.S. Army Corps of Engineers, Jacksonville District
CP	Contractor's Proposal
C&SF	Central and Southern Florida
CT	Contracting
C-111	Canal 111
Dept	Department
Design Agreement	Design Agreement between the Department of the Army and South Florida Water Management District, for South Florida Ecosystem Restoration Project (USACE and SFWMD, 2000a)
EAA	Everglades Agricultural Area
EFBK	Everglades, Florida Bay and the Keys
ESRI	Environmental Sensitivities Research Institute
ER	Engineering Regulation
EST	Eastern Standard Time
FACA	Federal Advisory Committee Act
FDEP	Florida Department of Environmental Protection
Feb	February
FHWAR	Fishing, Hunting, and Wildlife-Associated Recreation
FM	Field Manual
FS	Feasibility Study
FWC	Florida Fish and Wildlife Conservation Commission
FY	Fiscal Year
GEC	G.E.C., Inc. (Gulf Engineers & Consultants, Inc.)
GIS	Geographical Information Systems
GPS	Global Positioning System
HQUSACE/OCE	Headquarters Corps of Engineers/Office of Civil Engineering
IDIQ	Indefinite Delivery Order Contract
IGE	Independent Government Estimate
IFAS	Institute of Food and Agricultural Services
IT	Information Technology
IPR	In-Progress Review
ITR	Internal Technical Review

## FINAL DRAFT

Jan	January
Jul	July
LIFE	Learning In Florida Environment (FDEP Program)
LOW	Lake Okeechobee Watershed
LWC	Lower West Coast
Mar	March
MDC	Miami-Dade County
MFRs	Memorandum for the Record
MG	Million Gigabytes
MRP	Master Recreation Plan
NEPA	National Environmental Policy Act of 1969, as amended
Nov	November
NPBC	North Palm Beach County
NTP	Notice to Proceed
NWR	National Wildlife Refuge
Oct	October
O&M	Operation and Maintenance
OMRR&R	Operation, Maintenance, Repair, Rehabilitation, Replacement
ORV	Off -Road Vehicle
PAO	Public Affairs Office
PD	Planning Division
PDTs	Project Delivery Teams
PgMP	Program Management Plan
PMBP	Project Management Business Process
PIR	Project Implementation Report
PISR	Public Involvement Summary Report
PM	Project Manager
PMP	Project Management Plan
POC	Point-of-Contact
POP	Public Outreach Plan
PPDR	Pilot Project Design Report
PR&C	Purchase Request & Commitment
PTL	Project Technical Lead
Q&A	Question and Answer
QRB	Quality Assurance Board
RCRPs	Regional Conceptual Recreation Plans
REC	Recreation
RECOVER	Restoration Coordination and Verification
Restudy	Central and Southern Florida Project Comprehensive Review Study, Final Integrated Feasibility Report and Environmental Impact Statement, April 1999
RCRP	Regional Conceptual Recreation Plan
RPT	Recreation Planning Team
RV	Recreational Vehicle
SCORP	Statewide Comprehensive Outdoor Recreation Plan
Sep	September

## FINAL DRAFT

SFWMD	South Florida Water Management District
SOW	Scope of Work
SWFWMD LWC	South West Florida Water Management District Lower West Coast
TM	Technical Manual
TO	Task Order
UEC	Upper East Coast
USACE	United States Army Corps of Engineers
USFWS	United States Fish & Wildlife Service
WBS	Work Breakdown Structure
WET	Water Education for Teachers (FDEP Program)
WMAs	Wildlife Management Areas
WPA	Water Preserve Area
WRDA 2000	Water Resources Development Act of 2000
Yellowbook	Central and Southern Florida Project Comprehensive Review Study, Final Integrated Feasibility Report and Environmental Impact Statement, April 1999

FINAL DRAFT

COMPREHENSIVE EVERGLADES RESTORATION PLAN (CERP)  
MASTER RECREATION PLAN (MRP)  
TABLE OF CONTENTS

DESCRIPTION	PAGE NO.
<b>EXECUTIVE SUMMARY</b> .....	1
<b>TABLE OF CONTENTS</b> .....	1
<b>CHAPTER ONE: INTRODUCTION</b> .....	1
1.1. Study Authorization .....	1
1.2. Project Authority 1	
1.3. Recreation Authorization .....	3
1.4. Project Location. 4	
1.5. Purpose and Scope of the Master Recreation Plan .....	5
1.5.1. Purpose of the Master Recreation Plan .....	5
1.5.2. Scope of the Master Recreation Plan.....	5
1.5.3. Objectives of the Master Recreation Plan.....	6
1.6. Program Assumptions and Constraints.....	6
1.6.1. Program Assumptions.....	6
1.6.2. Program Constraints.....	7
1.7. State of Florida Park System Overview.....	9
1.7.1. State of Florida Park History.....	9
1.7.2. Outdoor Recreation and Conservation Act of 1963.....	9
1.7.3. Development of State Park Management Plans.....	9
1.8. South Florida Demographics and Recreation .....	9
1.9. Public Outreach Completed for the Master Recreation Plan .....	9
1.9.1. CERP Master Recreation Plan Outreach in 2006. ....	9
1.9.2. CERP Master Recreation Plan Outreach in 2008. ....	9
1.10. Previous Reports Associated with Public Use Development .....	10
1.11. Resource Management and Recreation Development Laws and Policy.....	11
1.11.1. Public Laws – Recreation.....	11
1.11.2. Public Laws – Fish and Wildlife.....	12
1.11.3. Public Laws – Cultural and Historical Considerations.....	13
1.11.4. Executive Orders.....	13
1.11.5. U.S. Army Corps of Engineers Regulations.....	14
1.11.6. Cooperative Agreements.....	14
1.12. Mission Statement.....	15
1.13. Operations and Maintenance Programs .....	16
1.13.1. Reservoir/Stormwater Treatment Areas/Lakeshore Management.....	16
1.13.2. Recreation Site Management.....	17
1.13.3. Visitor Assistance Program.....	17
1.13.4. Fish and Wildlife Management.....	17
1.13.5. Vegetation Management.....	18
1.14. Regulatory Program.....	18

FINAL DRAFT

1.15. Real Estate Program..... 18

1.16. Natural Resource Management Programs ..... 19

1.16.1. Corps of Engineers Management..... 19

1.16.2. South Florida Water Management District (SFWMD) Management..... 20

1.16.3. Florida Department of Environmental Protection (FDEP) ..... 20

1.16.3.1. FDEP Office of Greenways and Trails (OGT)..... 20

1.16.3.2. FDEP Division of Resource Assessment and Management..... 20

1.16.3.3. FDEP Division of State Lands..... 21

1.16.3.4. FDEP Division of Law Enforcement..... 22

1.17. Natural Resources Management Coordination ..... 21

1.17.1. SFWMD Coordination..... 21

1.18. Design and Construction Programs ..... 22

1.18.1. Shoreline Management Program..... 22

1.18.2. Structure Rehabilitation and Replacement..... 22

1.19. State Recreation Related Programs..... 23

1.19.1. State of Florida Programs..... 23

1.19.2. Florida Fish and Wildlife Conservation Commission (FWC)..... 23

1.19.2.1. FWC Greater Birding Trail..... 23

1.19.2.2. Florida’s Wildlife Legacy Initiative..... 23

1.19.2.3. Florida Safety Boating Program..... 24

1.19.2.4. Florida Waterway Management..... 24

1.19.2.5. Freshwater Big Catch Angler Recognition Program..... 24

1.19.2.6. Saltwater Fishing Management Programs..... 24

1.19.2.7. Hunting Management Programs..... 24

1.19.3. Division of Forestry Recreation Programs..... 25

1.19.3.1. Florida's State Forest Trailwalker Program..... 25

1.19.3.2. Florida's State Forest Trailtrotter Program..... 25

1.19.4. FDEP, Division of Recreation and Parks Programs..... 25

1.19.4.1. Florida Recreation Development Assistance Program..... 25

1.19.4.2. Florida Scenic and Wild Rivers Program..... 25

1.19.5. Office of Greenways and Trails (OGT)..... 26

1.19.5.1. Statewide Greenways and Trails Land Acquisition Program..... 26

1.19.5.2. Recreational Trails Program..... 26

1.19.5.3. Florida Circumnavigational Saltwater Paddling Trail..... 26

1.19.6. Division of State Lands..... 26

1.19.6.1. Rural and Family Lands Protection Act..... 26

1.19.6.2. Stan Mayfield Working Waterfronts Program..... 26

1.19.6.3. Additional Emphasis..... 26

1.19.6.4. Florida Forever Program..... 26

1.19.7. Office of Coastal and Aquatic Managed Areas..... 27

1.19.7.1. Submerged Lands Program..... 27

1.19.7.2. Southeast Florida Coral Reef Initiative and the Coral Reef Conservation Program..... 27

1.19.8. Division of Water Resource Management..... 27

1.19.8.1. Water Protection and Sustainability Program..... 27

1.19.9. Bureau of Beaches and Coastal Systems..... 27

FINAL DRAFT

1.19.9.1. Beach Erosion Control Program.....27

1.20. Federal Recreation Related Programs.....28

1.20.1. National Park Service.....28

1.20.1.1. National Register of Historic Places.....28

1.20.1.2. Federal Land and Water Conservation Fund Program.....28

1.20.1.3. Federal Lands-to-Parks Program.....28

1.20.1.4. Historic Preservation Grants-in-Aid Program.....28

1.20.2. U.S. Fish and Wildlife Service Recreation Programs.....28

1.20.2.1. Wildlife Protection.....28

1.20.2.2. Excise Tax Funds.....28

1.20.2.3. Federal Aid Programs.....28

1.20.3. National Trail System.....29

1.20.3.1. National Scenic Trails and National Historic Trails.....29

1.20.3. U.S. Department of Agriculture.....29

1.20.3.1. U.S. Forest Service.....29

1.20.3.2. National Parks Program.....29

1.20.3.3. Florida National Scenic Trail (FNST).....29

1.20.4. Department of Defense.....29

1.20.4.1. Department of the Army – Corps of Engineers.....29

1.20.4.2. Jacksonville District - CERP.....30

1.20.5. U.S. Department of Transportation (DOT).....30

1.20.5.1. DOT Transportation Enhancement Program.....30

1.20.5.2. National Scenic Byways Program.....30

1.20.6. U.S. Commerce Department.....30

1.20.6.1. National Oceanic and Atmospheric Administration (NOAA).....30

1.20.6.2. National Estuarine Research Reserve System (NERRS).....30

1.20.6.3. National Marine Sanctuary Program (NMSP).....30

1.20.6.4. National Coastal Zone Management Program (NCZMP).....31

1.21. Listing of Design Memoranda .....31

1.21.1. DG 1110-3-132 .....31

1.21.2. DG 1110-3-142 .....31

1.21.3. EM 1110-1-400 .....31

1.21.4. EM 1110-1-400 .....31

1.21.5. EM 1110-2-410 .....31

1.21.6. EM 1110-2-501 .....31

**CHAPTER TWO: EXISTING CONDITIONS.....32**

2.1. Existing Conditions (System-wide Perspective).....

2.1.1. Natural Resources.....

2.1.1.1. Climate.....

2.1.1.2. Geology.....

2.1.1.3. Hydrology.....

2.1.1.4. Water Quality.....

2.1.1.5. Topography.....

2.1.1.6. Soils.....

2.1.1.7. Air Quality.....

FINAL DRAFT

- 2.1.1.8. Vegetation.....
- 2.1.1.9. Marine and Coastal Resources.....
- 2.1.1.10. Fish & Wildlife.....
- 2.1.1.11. Visual Resources.....
- 2.1.2. Cultural Resources.....
- 2.1.2.1. Archeological Resources.....
- 2.1.2.2. Historical Resources.....
- 2.1.3. Geographical Information Systems (GIS).....
- 2.1.3.1. Master Recreation Plan GIS Methodology.....
- 2.1.3.2. GIS Workshop.....
- 2.1.3.2.1. GIS Criteria Determination.....
- 2.1.3.2.2. Criteria Weighting.....
- 2.1.3.2.3. Criteria Definition and Scoring.....
- 2.1.3.3. Suitability Mapping.....
- 2.1.3.4. Suitability Mapping Data.....
- 2.1.3.5. Infrastructure Mapping.....
- 2.1.3.6. Recreation Resources Mapping.....
- 2.1.3.7. Regional Land Use.....
- 2.1.3.8. Results of Suitability Mapping.....
- 2.1.4. Socio Economic Conditions.....
- 2.1.4.1. Existing Population.....
- 2.1.4.2. Population Projections.....
- 2.1.4.3. Density & Distribution.....
- 2.1.4.4. Florida’s Economy.....
- 2.1.4.5. Regional Land Use.....
- 2.1.4.6. Current Demand for Recreation Resources.....
- 2.1.5. Infrastructure/Land Use Classification.....
- 2.1.5.1. Federal, State Local Water Resources Projects .....
- 2.1.5.2. General Transportation.....
- 2.1.5.3. Recreational Infrastructure.....

**CHAPTER THREE: FUTURE RECREATION NEEDS**

- 3.1. CERP Study Area.....
- 3.1.1. CERP Regions.....
- 3.1.2. CERP Region Counties.....
- 3.1.3. Outdoor Recreation in Florida.....
- 3.1.4. SCORP 2000 Information.....
- 3.1.4.1. Outdoor Recreation.....
- 3.1.4.2. Outdoor Recreation Activities .....
- 3.1.4.3. Increasing Recreation Demand.....
- 3.1.4.4. International Destination.....
- 3.1.4.5. Recreation Forecasting.....
- 3.1.5. Future Recreation Needs – Kissimmee River Basin.....
- 3.1.6. Future Recreation Needs in the Caloosahatchee River Basin.....
- 3.1.7. Future Recreation Needs in the Upper East Coast Region .....
- 3.1.8. Future Recreation Needs in the Lower East Coast Region.....

FINAL DRAFT

3.2. Projected CERP Infrastructure...
3.2.1. Current C&SF Infrastructure ...
3.2.2. Proposed CERP Infrastructure – Restoration Goals ...
3.2.3. Proposed CERP Infrastructure – Recreation Opportunities...
3.3. Projected Population Change and Distribution...
3.3.1 Lower East Coast ...
3.3.2. Upper East Coast...
3.3.3. Big Cypress and Caloosahatchee River ...
3.4. Public Involvement Program ...
3.4.1. Public Meetings ...
3.4.2. Fact Sheets...
3.4.3. Power Point Presentation ...
3.4.4. Website Information ...
3.4.5. Summary of Public Meetings...
3.4.6. Identified Issues ...
3.4.7. Other Agency Coordination...
3.4.8. Recreation Demand-Supply-Needs Assessment ...
3.4.9. Indices of Future Demand Growth ...
Attachment A - Relative Need Methodology Indices...

CHAPTER FOUR: CERP PROJECT LANDS FOR RECREATION DEVELOPMENT

4.1. Overview of Chapter Intent ...
4.1.1. CERP MRP Study Area...
4.1.2. CERP Project Fee Title Lands. ...
4.1.3. CERP Project Locations....
4.1.4. CERP Selected Plan Features...
4.1.5. CERP Schematic Plans. ...
4.1.6. CERP Alternative D-13R Components....
4.1.7. CERP Critical Projects...
4.1.7.1. Rank of Critical Project and Title...
4.1.7.2. Critical Projects – Descriptions...
4.1.7.3. CERP Approved Critical Projects...
4.1.7.4. Potentially Funded CERP Critical Project...
4.1.7.5. CERP Without Project Condition Critical Projects...
4.1.7.6. CERP Critical Project Descriptions...
4.1.7.6.1. The East Coast Canal Critical Project...
4.1.7.6.2. Tamiami Trail Culverts...
4.1.7.6.3. Melaleuca Eradication Project – New Facility...
4.1.7.6.4. Florida Keys Carrying Capacity Study...
4.1.7.6.5. Western C-11 Water Quality Improvements...
4.1.7.6.6. L31-East Flow Redistribution...
4.1.7.6.7. North Fork of the New River Restoration...
4.1.8. Other Project Elements – Descriptions...
4.1.8.1. Kissimmee River Basin and Lake Okeechobee. ...
4.1.8.2. Lower East Coast Region...

FINAL DRAFT

4.1.8.3. Western Basin & Big Cypress Basin.....  
4.1.8.4. Southwest Florida.....  
4.1.8.5. System-wide.....  
4.2. CERP Project Restoration Compatible Recreation Program Elements.....  
4.2.1. Restoration Compatible Recreation.....  
4.3. Delineation of Market Area .....  
4.3.1. CERP Master Recreation Plan Study Area.....  
4.3.2. Market Area for the CERP Master Recreation Plan Study Area .....  
4.4. Historic and Current Use at Project .....  
4.5. Projections of Future Recreation Use and Facility Requirements .....  
4.5.1. Projected Future Recreation Use .....  
4.5.2. Projected Future Recreation Facility Needs. ....

**CHAPTER FIVE: REGIONAL CONCEPTUAL RECREATION PLAN DEVELOPMENT.....**

5.1. Resource Use Objectives.....  
5.1.1. Restoration Compatible Recreation.....  
5.1.1.1. Public Access. ....  
5.1.1.2. Passive Multi-Use Recreation Trails.....  
5.1.1.3. Passive Boating.....  
5.1.1.4. Nature Study.....  
5.1.1.5. Bank Fishing.....  
5.1.1.6. Tent Camping.....  
5.1.1.7. Picnicking.....  
5.1.1.8. Sightseeing. ....  
5.1.2. Active Use Restoration Compatible Recreation.....  
5.1.2.1. Hunting.....  
5.1.2.2. Motor Boating.....  
5.1.2.3. Traditional / Historical Recreation Uses.....  
5.1.2.4. Recreational Vehicle Use.....  
5.1.2.5. Off Road Vehicle Use.....  
5.1.3. Linkages to Existing and Planned Regional Recreation Resources.....  
5.1.3.1. Florida National Scenic Trail (FNST) .....  
5.1.3.2. The Great Florida Birding Trail (GFBT) .....  
5.1.3.3. South Dade Greenway Network (SDGN) .....  
5.1.3.4. North Dade Greenway Network (NDGN) .....  
5.1.3.5. North Everglades Natural Areas (NENA) .....  
5.2. Performance Measures.....  
5.3. Carrying Capacity.....  
5.4. GIS Suitability.....  
5.4.1. Methods and Data.....  
5.4.2. GIS Methods and Data. ....  
5.4.2.1. GIS Methods. ....  
5.4.2.2. GIS Criteria Determination.....  
5.4.2.3. GIS Criteria Weighting.....  
5.4.2.4. GIS Criteria Definitions and Scoring. ....

FINAL DRAFT

5.4.2.5. GIS Data. ....

5.4.2.6. GIS Results of Suitability Modeling.....

5.4.2.7. GIS Recommendations. ....

5.4.3. GIS Quality Control Plan Overview.....

5.4.3.1. GIS QCP Project Purpose.....

5.4.3.2. GIS QCP Criteria.....

5.4.3.3. GIS QCP Control Procedures.....

5.4.3.4. GIS QCP Data Requirements.....

5.4.3.5. GIS QCP Data Standards.....

5.4.3.5.1. Data Management.....

5.4.3.5.2. Projection Criteria.....

5.4.3.5.3. Metadata Compliance.....

5.4.3.5.4. Spatial Accuracy.....

5.4.3.6. CERP MPR Suitability Modeling.....

5.5. Public Outreach.....

5.5.1. Meetings.....

5.5.2. Environmental Justice in Everglades Restoration Planning.....

5.5.3. MRP Public Outreach Goals.....

5.5.4. MRP Public Outreach Objectives.....

5.5.5. MRP Public Outreach Components.....

5.5.6. Public Comments.....

5.5.6.1. Public Comments Compiled by GEC.....

5.5.6.2. Public Comment Analysis and Synopsis.....

5.5.6.3. Public Comment Synthesis.....

5.5.6.4. Results of Suitability Modeling .....

5.5.6.5. Recommendations. ....

5.6. Regional Conceptual Recreation Plans (RCRPs).....

5.6.1. RCRPs Background.....

5.6.2. RCRP Three Phases of Development.....

5.6.3. Public Meeting Background.....

5.6.3.1. Public Meeting Notices

5.6.3.2. Public Meeting Sign-in Sheets/MFRs.....

5.6.3.3. Public Meeting Format.....

5.6.3.4. Public Meeting Overview.....

5.6.3.5. Public Meeting Synopsis.....

5.7. Stakeholder Meeting Synopsis.....

5.7.1. Stakeholder Meeting Invites.....

5.7.2. Stakeholder Meeting Sign-in Sheets / MFRs.....

5.7.3. Stakeholder Meeting Locations.....

5.8. Regional Conceptual Recreation Plan (RCRP) Design Analysis. ....

5.8.1. Master Recreation Plan Philosophy, Intent and Scope.....

5.8.1.1. Philosophy.....

5.8.1.2. Design Intent.....

5.8.2. Input From Public Stakeholders and Study Team.....

5.8.2.1. Program Analysis Development.....

5.8.2.2. RCRP Submittals.....

FINAL DRAFT

5.8.2.3. Program Analysis.....

5.8.2.4. MRP Program Analysis Contributors.....

5.8.2.5. Public and Stakeholder Recommendations.....

5.8.3. Process of Developing the Plans.....

5.8.3.1 Graphic Display Tools and Techniques.....

5.8.3.2. RCRP Map Projections and Software.....

5.8.3.3. RCRP Development.....

5.8.4. Determining Compatibility.....

5.8.4.1. Information Analysis.....

5.8.4.2. RCRP Primary Compatibility Matrix.....

5.8.4.3. RCRP Composite Matrix.....

5.8.5. RCRP Data Sources.....

5.8.5.1. Internet Websites.....

5.8.5.2. CERPZone Data Sources.....

5.8.5.3. State, County and Other Data Sources.....

5.8.6. RCRP Layouts.....

5.8.6.1. ArcView scale of 1:420,000.....

5.8.6.2. ArcView at a scale of 1:340,000.....

5.9. Problems and Constraints .....

5.9.1. Recreation Supply and Demand. ....

5.9.1.1. Recreation Supply.....

5.9.1.2. Recreation Demand.....

5.9.2. Florida Population Growth.....

5.9.3. Limited Public Land and Access Constraint.....

5.9.4. Diminishing Resource Constraint.....

5.9.5. Corps of Engineers and SFWMD Laws, Regulations and CERP Guidance.....

Attachment A – Optimum Carrying Capacity for Outdoor Recreation: Land and Water Based Activities, SCORP 2000.

Attachment B – SCORP Summary Statement from FDEP, Division of Recreation and Parks, 2000

Attachment C – Suitability Modeling Summary by GEC, Inc.

Attachment D – Study Team Workshop 1; GIS Suitability Mapping Introduction

Attachment E - Study Team Workshop 2; GIS Suitability Mapping, Criteria and Weighting Development

Attachment F – GIS Metadata

Attachment G – Sample Public Notices, GEC, Inc.

Attachment H – Sample Public Notices, Sonshine Communication, Inc.

Attachment I – GIS Criteria, Weighting and Scoring Information

**CHAPTER SIX: SYSTEMWIDE EVALUATION and MONITORING GUIDELINES.....**

6.1. Overview.....

6.2. CERP Master Recreation Plan Goal.....

6.3. Government Performance History.....

6.4. Corps of Engineers Recreation History.....

FINAL DRAFT

6.4.1. Corps Recreation Performance Background...
6.4.1.1. Corps Recreation Management Examples...
6.4.1.2. Corps Performance Measure Baseline Information...
6.4.1.3. Corps Recreation Program Performance Improvement Initiative...
6.5. State of Florida Park Service Analysis Background...
6.6. MRP Systemwide Evaluation and Performance Monitoring Guidelines Overview.
6.6.1. Recreation Activities / Facilities Summary Table...
6.6.2. Recreation Design Guidelines Overview...
6.6.3. Quantitative Report Card...
6.6.4. Qualitative Assessment Template...
Attachment A – Recreation Facilities Design Checklist Summary Table.
Attachment B – Recreation Facilities Design Guidelines Overview.
Attachment C – Quantitative Report Card.
Attachment D – Systemwide Qualitative Performance Measures Template.
Attachment E – Performance Measures.

CHAPTER SEVEN: RESOURCE MANAGEMENT GUIDELINES

7.1. U. S. Army Corps of Engineers Guidance...
7.1.1. Corps of Engineers Operational Management Plan...
7.1.1.1. Corps of Engineers Natural Resource Management Mission...
7.1.1.2. Corps of Engineers Natural Resource Management Program Objectives...
7.1.1.3. Corps of Engineers Natural Resource Management Resource Objectives...
7.1.1.4. Corps of Engineers Natural Resource Park Management...
7.1.1.5. Corps of Engineers Natural Resource Analysis...
7.1.1.6. Corps of Engineers Natural Resource Recreation Program Analysis...
7.1.2. Resource Management Component – SCORP 2000 Draft.
7.1.3. SFWMD Responsibilities, Limitations, and Constraints.
7.1.3.1. SFWMD Policy...
7.1.3.2. SFWMD Mission...
7.1.4. SFWMD Resource Management Plans...
7.1.5. SFWMD Resource Protection and Law Enforcement...
7.1.5.1. SFWMD Law Enforcement...
7.1.5.2. SFWMD Rule 40E-7...
7.1.6. SFWMD Volunteer Program...
7.1.7. SFWMD Summary of Volunteer Plan Objectives...

CHAPTER EIGHT: REGIONAL CONCEPTUAL RECREATION PLANS.

8.1. Background..
8.2. Purpose..
8.3. Objectives..
8.4. GIS Analysis and Synthesis...
8.4.1. Background..
8.4.2. SCORP Information...
8.4.3. GIS Analysis..
8.4.4. GIS Suitability..
8.5. GIS Compatibility Mapping..

FINAL DRAFT

8.6. Public Involvement.....

8.6.1. Topic Focus.. ..

8.6.2. Public Input Analysis.....

8.7. Regional Recreation Program Analysis and the Regional Conceptual Recreation Plans. . . . .

8.7.1. Methodology.. ..

8.7.2. Compatibility.. ..

8.7.3. Summary. . . . .

8.8. Recreation Studies and Trends.....

8.8.1. Recreation Related Studies.. ..

8.8.2. The Florida Statewide Comprehensive Outdoor Recreation Plan (SCORP).....

8.8.3. Outdoor Recreation in America: A National Assessment of Demand and Supply Trends.. . . . .

8.8.4. National Survey of Fishing, Hunting and Wildlife-Associated Recreation.....

8.8.5. Major Challenges to the Future of Hunting in Florida: Final Report.. ..

8.8.6. Fisheries Management: Final Topline Report.....

8.8.7. SFWMD Recreation Management and Partnership Plan.....

8.8.8. Recreation Trends.. ..

8.8.8.1. Hiking.. ..

8.8.8.2. Walking.. ..

8.8.8.3. Biking.. ..

8.8.8.4. Equestrian Use.. ..

8.8.8.5. Motorized Boating.. ..

8.8.8.6. Airboating.. ..

8.8.8.7. Canoeing/Kayaking. ....

8.8.8.8. All-Terrain Vehicle/Off-Road Vehicle Riding.. ..

8.8.8.9. Hunting.. ..

8.8.8.10. Fishing.. ..

8.8.8.11. Interpretive / Educational.....

8.8.8.12. Camping.. ..

8.8.8.13. Swimming.. ..

8.8.8.14. Open Space Activities.....

8.8.8.15. Visiting Historic and Archaeological Sites.....

8.9. Determining Recreation Needs.....

8.9.1. Recreation Needs Terminology.. ..

8.9.2. Recreation Supply.....

8.9.3. Recreation Demand.....

8.9.3.1. SCORP Recreation Demand Assessment.....

8.9.3.2. SCORP Regional Demand.....

8.9.3.3. SCORP Demand Projection Summary.. ..

8.9.4. SCORP Recreation Needs.....

8.9.5. Public Input.. ..

8.9.6. Applying SCORP Needs to CERP Regions.....

8.9.7. Population Growth and SCORP Projected Recreation Deficits.. ..

8.9.8. SCORP Regional Recreation Needs Breakdown.....

8.9.8.1. Upper East Coast (UEC) Recreation Needs.....

FINAL DRAFT

8.9.8.2. Northern Palm Beach County (NPBC) Recreation Needs.....

8.9.8.3. Water Preserve Areas (WPA) Recreation Needs.....

8.9.8.4. Miami-Dade County (MDC) Recreation Needs.....

8.9.8.5. Everglades, Florida Bay, and Keys (EFBK) Recreation Needs.....

8.9.8.6. Lower West Coast (LWC) Recreation Needs.....

8.9.8.7. Everglades Agricultural Area (EAA) Recreation Needs.....

8.9.8.8. Lake Okeechobee Watershed (LOW) Recreation Needs.....

8.9.9. Public Identified Regional Recreation Needs Breakdown.....

8.9.9.1. Upper East Coast (UEC) Public Generated Recreation Needs.....

8.9.9.2. Northern Palm Beach County (NPBC) Public Generated Recreation Needs.....

8.9.9.3. Water Preserve Areas (WPAs) Public Generated Recreation Needs.....

8.9.9.4. Miami-Dade County (MDC) Public Generated Recreation Needs.....

8.9.9.5. Everglades, Florida Bay, and Keys (EFBK) Public Generated Recreation Needs.....

8.9.9.6. Lower West Coast (LWC) Public Generated Recreation Needs.....

8.9.9.7. Everglades Agricultural Area (EAA) Public Generated Recreation Needs.....

8.9.9.8. Lake Okeechobee Watershed (LOW) Public Generated Recreation Needs.....

8.10. Regional Analysis & Plans.....

8.10.1. Upper East Coast (UEC) Region Supply, Demand, Need and Compatibility.....

8.10.1.1. Background.....

8.10.1.2. Supply.....

8.10.1.3. Demand.....

8.10.1.4. Need.....

8.10.1.5. Compatibility.....

8.10.2. Northern Palm Beach County (NPBC) Region Supply, Demand, Need and Compatibility.....

8.10.2.1. Background.....

8.10.2.2. Supply.....

8.10.2.3. Demand.....

8.10.2.4. Need.....

8.10.2.5. Compatibility.....

8.10.3. Water Preserve Areas (WPA) Region Supply, Demand, Need and Compatibility.....

8.10.3.1. Background.....

8.10.3.2. Supply.....

8.10.3.3. Demand.....

8.10.3.4. Need.....

8.10.3.5. Compatibility.....

8.10.4. Miami-Dade County (MDC) Region Supply, Demand, Need and Compatibility.....

8.10.4.1. Background.....

8.10.4.2. Supply.....

8.10.4.3. Demand.....

8.10.4.4. Need.....

8.10.4.5. Compatibility.....

8.10.5. Everglades, Florida Bay and The Keys (EGBK) Region Supply, Demand, Need and Compatibility.....

8.10.5.1. Background.....

8.10.5.2. Supply.....

FINAL DRAFT

8.10.5.3. Demand..
8.10.5.4. Need..
8.10.5.5. Compatibility...
8.10.6. Lower West Coast (LWC) Region Supply, Demand, Need and Compatibility...
8.10.6.1. Background...
8.10.6.2. Supply...
8.10.6.3. Demand...
8.10.6.4. Need...
8.10.6.5. Compatibility...
8.10.7. Everglades Agricultural Area (EAA) Region Supply, Demand, Need and Compatibility...
8.10.7.1. Background...
8.10.7.2. Supply...
8.10.7.3. Demand...
8.10.7.4. Need...
8.10.7.5. Compatibility...
8.10.8. Lake Okeechobee Watershed (LOW) Region Supply, Demand, Need and Compatibility...
8.10.8.1. Background...
8.10.8.2. Supply...
8.10.8.3. Demand...
8.10.8.4. Need...
8.10.8.5. Compatibility...

CHAPTER NINE: SPECIAL PROGRAMS.

9.1. Ethnographic Study Report...
9.1.1. Ethnographic Study Report Study Area.
9.1.2. Gladesmen Places of Significance.
9.1.3. Ethnographic Study Report Recommendations.
9.1.4. Social Effects to Gladesmen Culture
9.1.5. Section 106 of the National Historic Preservation Act PDT Compliance...
9.2. CERP Guidance Memorandum (CGM)...
9.2.1. Background....
9.3. ORV/ATV Policy Overview Summary.....
9.3.1. Department of the Interior.....
9.3.1.1. US Fish and Wildlife Service.....
9.3.1.2. National Park Service.....
9.3.1.2.1. NPS Organic Act.....
9.3.1.2.2. The legislative History.....
9.3.1.2.3. Proposed NPS Action Plan.....
9.3.1.2.4. Everglades National Park ORV Management.....
9.3.2. Department of the Army.....
9.3.2.1. Title 32: National Defense. Part 656—Installations, Use of Off-Road Vehicles on Army Land Section 656.5.Policies.....
9.3.2.2. Corps of Engineers Guidance.....
9.3.3. Department of Agriculture.....

FINAL DRAFT

- 9.3.3.1. Federal Register Volume 70 Number 216 Rules and Regulations.....
- 9.3.3.2. USDA Forest Service.....
- 9.3.3.3. National Resource Conservation Service.....
- 9.3.4. Executive Orders.....
- 9.3.4.1. Executive Order 11644.....
- 9.3.4.2. Executive Order 11989.....
- 9.3.5. State Of Florida.....
- 9.3.5.1. South Florida Water Management District.....
- 9.3.5.2. Florida Fish and Wildlife Conservation Commission. ....
- 9.3.5.3. Florida Department of Environmental Protection.....
- 9.3.5.4. Florida Department of Forestry.....
- 9.3.6. Florida County ORV Policies.....
- 9.3.6.1. Miami-Dade County.....
- 9.3.6.2. Broward County.....
- 9.3.6.3. St. Lucie County.....
- 9.3.6.4. Palm Beach County.....
- 9.3.6.5. Lee County.....
- 9.3.6.6. Collier County.....
- 9.3.6.7. Lake Area.....
- 9.3.6.8. Martin County.....
- 9.3.6.9. Highlands County.....
- 9.3.6.10. Glades County.....
- 9.3.6.11. Hendry County.....
- 9.3.6.12. Monroe County.....
- 9.3.6.13. Okeechobee County.....
- 9.3.7. OHV Site Evaluation Criteria.....
- 9.3.8. Overview of OHV Parks.....

- CHAPTER TEN: SUMMARY AND RECOMMENDATIONS.....**
- 10.1. Recreation Planning Compliance.....
- 10.2. Recreation Planning Components.....
- 10.3. CERP Master Recreation Plan Vision.....
- 10.4. Regional Conceptual Recreation Plan (RCRP) Recommendations.....
- 10.4.1 Upper East Coast (UEC) Region RCRP Recommendations.....
- 10.4.1.1. Recommendations for SCORP Deficits.....
- 10.4.1.2. Recommendations for Public Needs.....
- 10.4.2. Northern Palm Beach County (NPBC) Region RCRP Recommendations.....
- 10.4.2.1. Recommendations for SCORP Deficits.....
- 10.4.2.2. Recommendations for Public Needs.....
- 10.4.3. Water Preserve Areas (WPAs) Region RCRP Recommendations.....
- 10.4.3.1. Recommendations for SCORP Deficits.....
- 10.4.3.2. Recommendations for Public Needs.....
- 10.4.4. Miami Dade County (MDCs) Region RCRP Recommendations.....
- 10.4.4.1. Recommendations for SCORP Deficits.....
- 10.4.4.2. Recommendations for Public Needs.....

FINAL DRAFT

10.4.5. Everglades, Florida Bay & the Keys (EFBK) Region RCRP Recommendations...
10.4.5.1. Recommendations for SCORP Deficits...
10.4.5.2. Recommendations for Public Needs...
10.4.6. Lower West Coast (LWC) Region RCRP Recommendations...
10.4.6.1. Recommendations for SCORP Deficits...
10.4.6.2. Recommendations for Public Needs...
10.4.7. Everglades Agricultural Area (EAA) Region RCRP Recommendations...
10.4.7.1. Recommendations for SCORP Deficits...
10.4.7.2. Recommendations for Public Needs...
10.4.8. Lake Okeechobee Watershed (LOW) Region RCRP Recommendations...
10.4.8.1. Recommendations for SCORP Deficits...
10.4.8.2. Recommendations for Public Needs...
10.5. CERP Master Recreation Plan Conclusions...
10.6. CERP Master Recreation Plan Approval...

APPENDICES

- A. CERP Master Recreation Plan Project Management Plan.
B. SFWMD Recreation Management and Partnership Plan.
C. CERP Master Recreation Plan PDT Members.
D. CERP Master Recreation Plan References.
E. Corps of Engineers Recreation Facilities Cost-Share List.
F. CERP Master Recreation Plan Regional Planning Guidance.
G. CERP Master Recreation Plan All Public Comments.
H. CERP Ethnographic Study Report Volume I, May 2009
I. Master Recreation Plan CERP Guidance Memorandum

FIGURES...
1.4.1. CERP Planning Regions ...4
1.6.2.1. CERP Project Lands ...8
2.1. CERP Planning Regions ...
2.2. C&SF Project Infrastructure ...
2.1.3.2.3. Criteria Definition and Scoring Examples...
2.1.3.4. Suitability Mapping Data...
2.1.3.8.1. Bank Fishing Suitability Mapping 'Without Project' Conditions ...
2.1.3.8.2. Bank Fishing Suitability Mapping 'With Project' Conditions ...
2.1.4.3. CERP Regions Overlaid onto SCORP Regions...

FINAL DRAFT

2.1.4.2.1. South Florida Land Use in Year 2000 .....  
3.4.6.2. Master Recreation Plan Public Regional Comment Comparison .....  
4.1. Select Features of Alternative D-13R .....  
4.1.5.1. Southern L-8 Basin. ....  
4.1.5.3. General Water Preserve Areas Concept.....  
4.1.5.4. Central Broward Area Concept.....  
4.1.5.5. Southwest Broward County Concept.....  
4.1.5.6. North and Central Lake Belt Storage Areas Concept. ....  
4.1.5.7. Lake Belt Storage Concept.. ....  
4.1.5.8. Bird Drive and L-31 N Seepage Management Concept. ....  
4.1.5.9. C-17 Concept.. ....  
4.1.5.10. C-51 East Concept.. ....  
4.1.5.11. Broward County Secondary Canal System Concept. ....  
4.1.5.12. Alternative D13R: North New River Canal Concept.. ....  
4.1.5.13. Agricultural Reserve Reservoir Concept .....  
4.1.5.14. C-111 North Spreader Canal Concept. ....  
4.1.5.15. South Biscayne Bay and Coastal Wetlands Enhancement Concept.....  
4.1.5.16. Big Cypress / L-28 Interceptor Concept.. ....  
4.1.5.17. Southern L-8 Reservoir Concept.. ....  
4.1.5.18. Water Conservation Areas Concept.....  
5.5.1. CERP MRP Planning Regions.....  
5.5.2. Public CERP MRP Future Demand Summary Comments. ....  
5.5.2. Miami–Dade County Regional Map with Summarized Public Input.....  
5.5.3. Regional Distribution of CERP MRP Public Comments. ....  
5.5.4. Public Use Lands for Potential Linkage Opportunities .....  
5.6.1. Draft Suitability Map with Public Comments.. ....  
6.1. MRP Recreation Facility Checklist Summary Table.....  
6.2. Minimum spaces ADA requirements.....  
6.3. Draft CERP Project Recreation Report Card. ....  
8.9.5. SCORP Regions (left) Overlaid with CERP Regions (right)

**TABLES**.....  
1.3.1. C&SF Project Authorizations.....  
1.9.1. Consolidated Future Demand Regional Comments, 2006. ....  
2.1.1.4.1. Suite of Water Quality Parameters Potentially Affected by MRP.....  
2.1.1.4.2. Key Water Quality Parameters Considered Degraded in MRP Study Area.....  
2.1.1.10.1. Common Everglades Fresh Water Fish Species.....  
2.1.1.10.2. Common Resident & Migratory Birds of South Florida (USACE 1998 Survey) .....  
2.1.1.10.3. Common Mammals of Everglades Region (after Lodge 1994) .....  
2.1.1.10.4. Protected Wildlife Species Present/Potentially Present w/in MRP Study Area .....  
2.1.1.10.5. Federally Protected Plant Species Present/Potentially Present within CERP.....  
2.1.3.8.1. Compatibility of Selected Recreation Types with CERP Project Lands .....  
2.1.4.1.1. Population Statistics for 13 County Study Areas.....  
2.1.4.1.2. Population Percentage Change by Decade .....  
2.1.4.1.3. Population Percentage by Age Group, 2000 Census .....

FINAL DRAFT

2.1.4.1.4. Population by Race, 2006 .....
2.1.4.2.1. County Population Projection Estimates 2010-2035 .....
2.1.4.4.1. Selected Indices of Demographic Profile of Counties Within CERP .....
2.1.4.4.2 South Florida SCORP Regions and County Comparisons .....
2.1.4.6.1. Trends in Recreation Visitation on Federal Lands. (In Millions) .....
2.1.4.6.2. Trends in Recreation Participation in the United States, 1982 – 1994 .....
2.1.4.6.3. Total U.S. Wildlife-Watching Participation .....
2.1.4.6.4. Estimated Expenditures: S. Florida Wildlife Related Recreation – 2000.....
3.1.4.1. 1998 Outdoor Recreation Resources and Facilities by Major Supplier – SCORP Region 7 - Central Florida (DeSoto, Hardee, Highlands, Okeechobee, Polk) .....
3.1.4.2. 1998 Outdoor Recreation Resources and Facilities by Major Supplier - SCORP Region 9 – Southwest Florida (Charlotte, Collier, Lee, Sarasota, Glades, and Hendry). .....
3.1.4.3. 1998 Outdoor Recreation Resources and Facilities by Major Supplier - SCORP Region 10 – Treasure Coast (Indian River, St. Lucie, Martin, Palm Beach). .....
3.1.4.4. 1998 Outdoor Recreation Resources and Facilities by Major Supplier - SCORP Region 11 – South Florida (Broward, Dade, Monroe). .....
3.1.4.5 Florida Statewide Region Need Indices for 2010 – Relative Need Priorities
Index.....
3.1.8.1. Year 2010 Resources and Facility Needs by SCORP Region For CERP Area.....
3.4.6.1. Number of Comments Received During the CERP MRP Outreach 2006 as Related to Future Demand by CERP Region.....
3.4.8.1. Estimated Demand and Need for Outdoor Recreation Resources and Facilities .....
4.1.8.1. OPEs Considered in the Plan Formulation Process. ....
5.5.1. CERP MRP Public Outreach Meeting Schedule.. .....
5.8.1. Public and Stakeholder Recommendations.....
5.8.2. Sample Primary Matrix for Potential Recreation Compatibility.. .....
5.8.3. Sample Composite Matrix for Potential Recreation Compatibility.....
8.9.5. Number of Comments Received During the CERP MRP Public Outreach Input 2006 as Related to Public-Perceived Outdoor Recreation Needs.....
8.9.6. Projected Population Growth Rates - SCORP Regions Applied to CERP. ....
9.2. Minimum ADA Parking Space Requirements.....
9.2.1. Summary Table CERP Project Facilities and Potential Recreation Amenities – SFWMD... .....
9.3.3. Recreation Summary Planning For CERP PIRs... ..

ENCLOSURE

A -- Acronyms