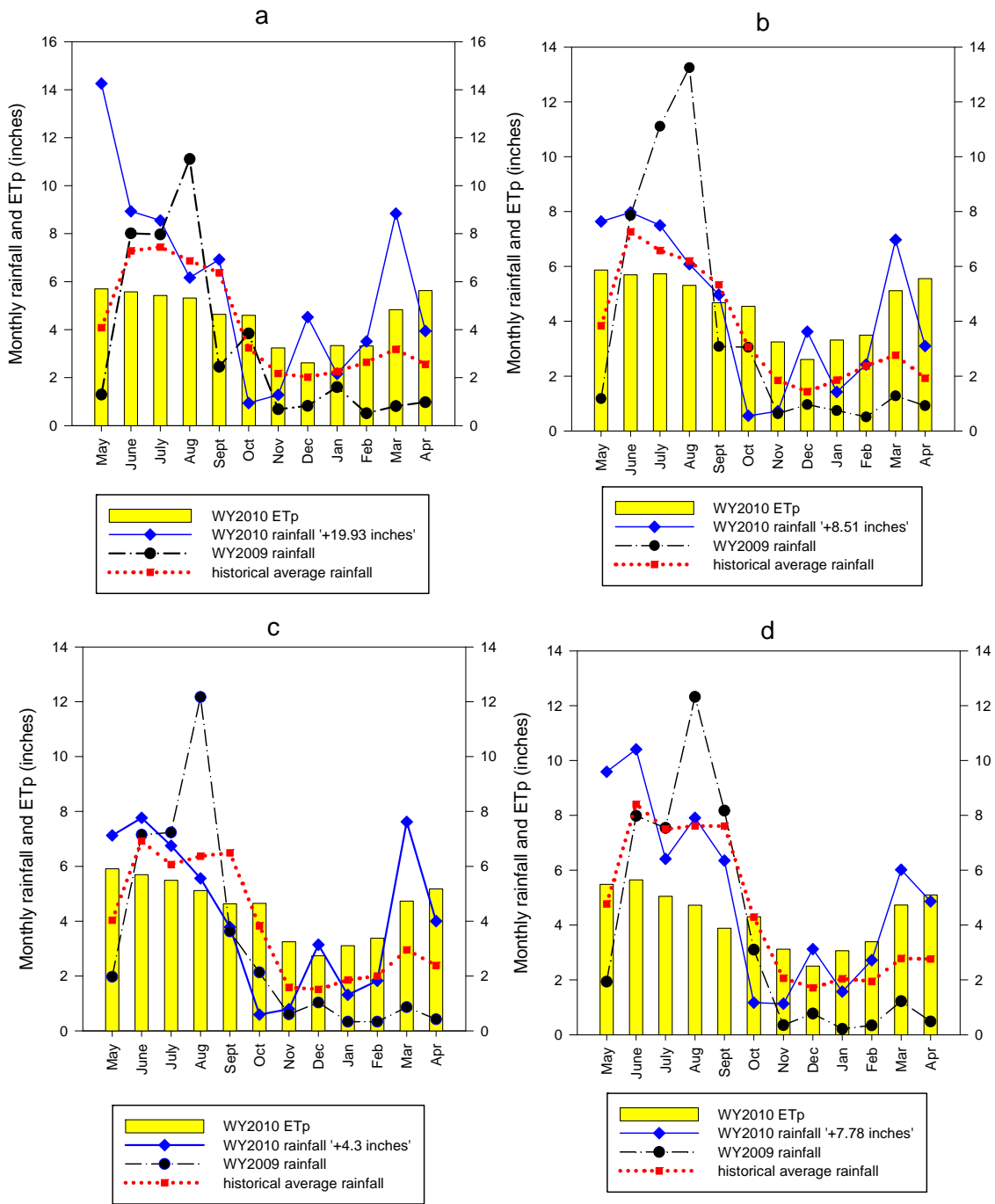
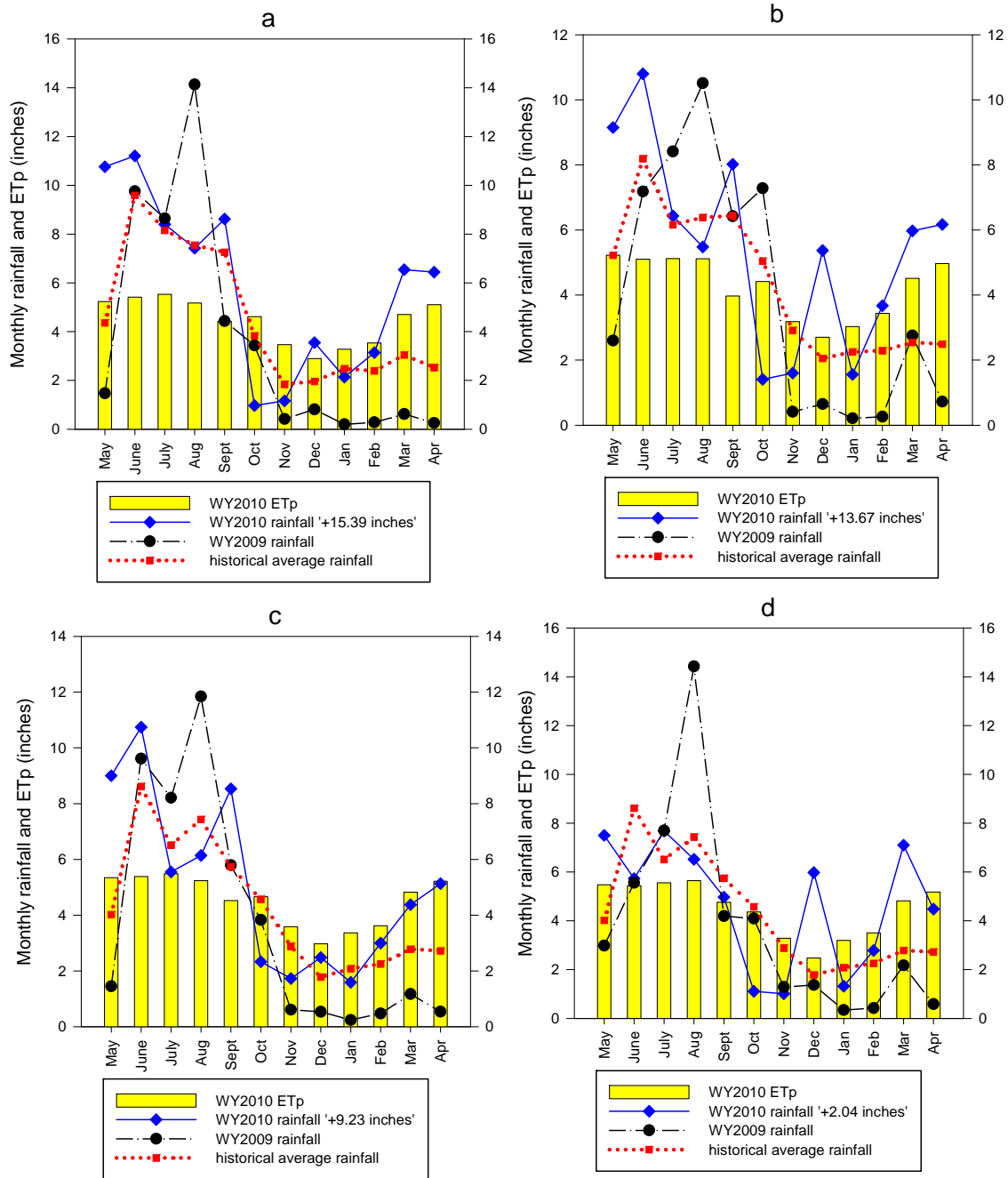


# **Appendix 2-2: Water Years 2009 and 2010 Monthly Rainfall, Historical Average Rainfall and Water Year 2010 Potential Evapotranspiration for District Rainfall Areas**

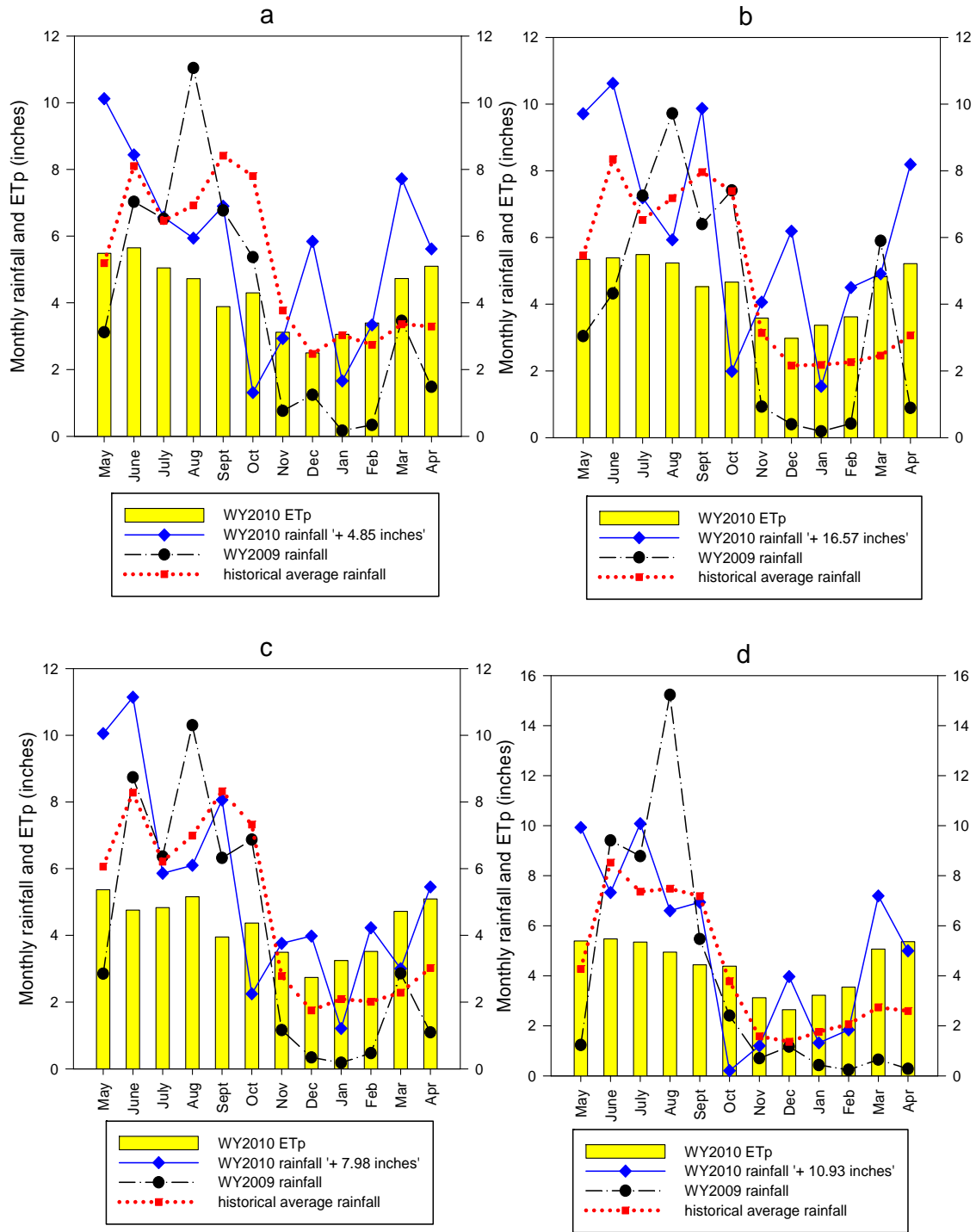
Wossenu Abtew, R. Scott Huebner,  
Chandra Pathak and Violeta Ciuca



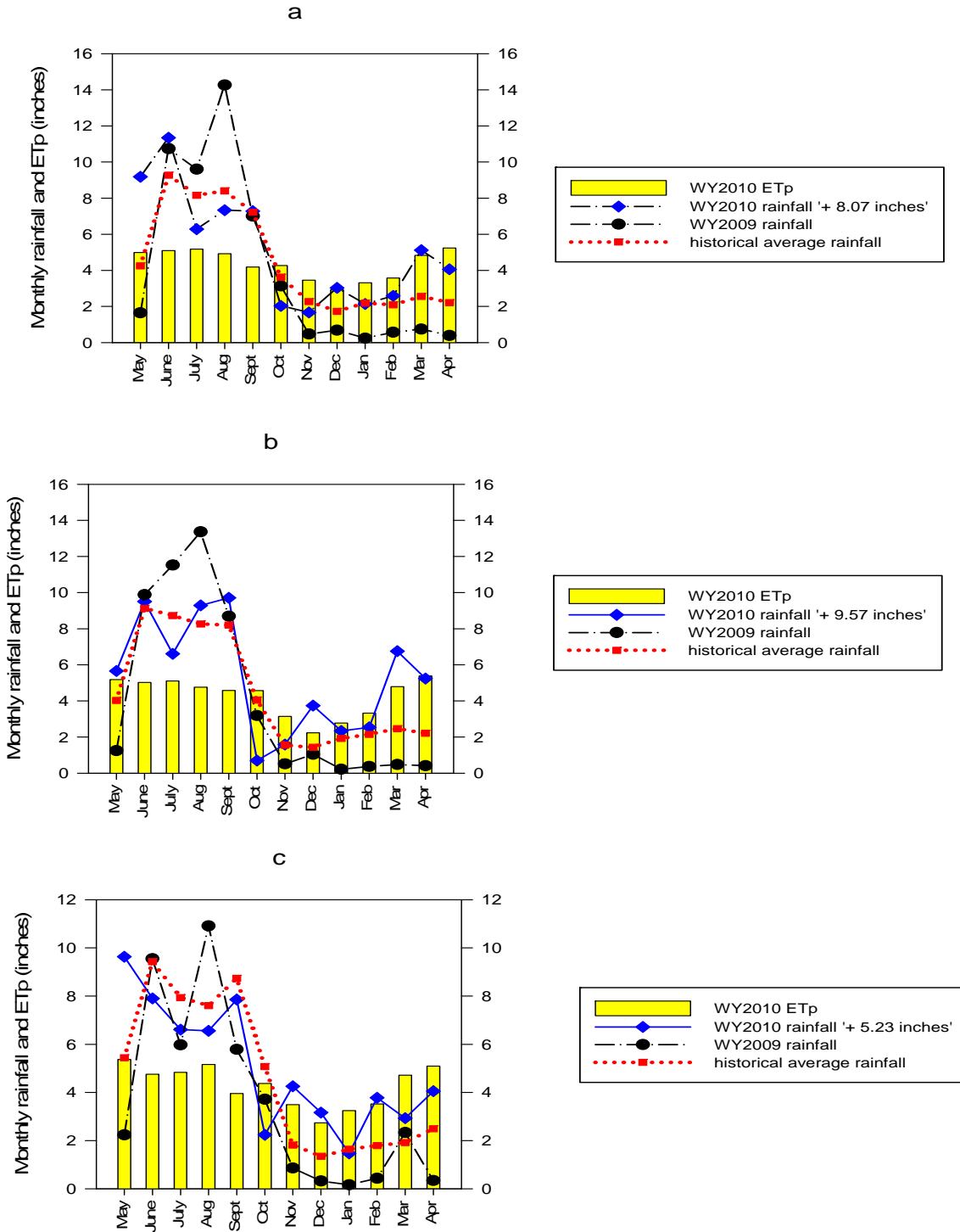
**Figure 1.** Monthly rainfall and potential evapotranspiration (ETp) for the (a) Upper Kissimmee, (b) Lower Kissimmee, (c) Lake Okeechobee, and (d) East Everglades Agricultural Area rainfall areas during Water Year 2009 (WY2009) (May 1, 2008–April 30, 2009) and Water Year 2010 (WY2010) (May 1, 2009–April 30, 2010).



**Figure 2.** Monthly rainfall and ETp for (a) West Everglades Agricultural Area, (b) Water Conservation Area 1 and Water Conservation Area 2, (c) Water Conservation Area 3, and (d) Martin/St. Lucie rainfall areas.



**Figure 3.** Monthly rainfall and ETp for (a) Palm Beach, (b) Broward, (c) Miami-Dade, and (d) Caloosahatchee rainfall areas.



**Figure 4.** Monthly rainfall and ETp for (a) Big Cypress Preserve, (b) Southwest Coast, and (c) Everglades National Park rainfall areas.