



# GEOPHYSICAL WELL SURVEY

CLIENT City of Delray Beach Date July 20, 1988  
 Well No. G-2 Project No. SEF24708.A8

Location: State Florida County Palm Beach  
 T. 46 R. 43 S. 1  
 Logged by P. Kwiatkowski Observer L. Rainger

- Electric  
 16" Normal  
 64" Normal  
 Single Point  
 S.P.
- Caliper  
 Fluid Resistivity  
 Fluid Velocity  
 Gamma Ray  
 Temperature

Owner: City of Delray Beach  
 Well: G-2  
 Driller: Ground Water Protection Date Drilled: JULY 1988  
 Surface Elevation: \_\_\_\_\_ ft.  Estimated  Measured Above MSL  
 T.D. Logged 113' T.D. Driller 115'  
 Hole Dia. 2" to 115'  
 Casing Dia. N/A  
 Finish:  Open hole  Screen  Gravel  Other  
 Water Level: 2 ft.  Above MP AT  Above  Below  Land Surface  
 Yield: Flow N/A gpm Pump \_\_\_\_\_ gpm  
 Drawdown: N/A ft. after \_\_\_\_\_ hours pumping @ \_\_\_\_\_ gpm  
 Use:  Dom.  Stock  PS  Ind.  Irr.  Test  
 Heating or cooling  Drainage  Disposal  Obj.

Water Quality: N/A Drilling Mud  
 Temp. \_\_\_\_\_ °F; Sp. Grd. \_\_\_\_\_; Iron \_\_\_\_\_ mg/L  
 Cl<sup>-</sup> \_\_\_\_\_ mg/L; SO<sub>4</sub> \_\_\_\_\_ mg/L; Total Hardness \_\_\_\_\_ mg/L  
 Color \_\_\_\_\_ Odor \_\_\_\_\_ Taste \_\_\_\_\_

Remarks:

**Log Scales**

Electric Log Fluid Resistivity  
 SP 40 millivolts/inch \_\_\_\_\_ ohm meters/inch  
 Res. 20 ohm-meters/inch  
 Res. \_\_\_\_\_ ohms/inch @ \_\_\_\_\_ °F

Gamma Ray Log Fluid Velocity  
10 Counts/sec/inch \_\_\_\_\_ Counts/min/inch  
 Time Constant 4 sec. \_\_\_\_\_ FPM (Continuous)  
 Logging speed 25 FPM Q = \_\_\_\_\_ gpm

Temperature Caliper  
 \_\_\_\_\_ °F to \_\_\_\_\_ °F \_\_\_\_\_ inches to \_\_\_\_\_ inches  
 Logging speed \_\_\_\_\_ FPM Logging speed' \_\_\_\_\_ FPM

Water Samples  
 Depths sampled: \_\_\_\_\_

**CH2M HILL**  
 Water Resources Division  
 P.O. Box 1847  
 Gainesville, Florida 32620  
 904/377-2442

**Fort Myers Office**  
 The Financial Center  
 1550 College Parkway, Suite 307  
 Fort Myers, Florida 33907  
 813/275-3121

**Tampa Office**  
 Rocky Point Centre  
 3000 North Rocky Point Drive, West  
 Suite 350  
 Tampa Florida, 33607  
 Hillsborough County—813/888-6777  
 Pinellas County—813/536-9454

**Deerfield Beach Office**  
 Hillsboro Executive Center North  
 350 Fairway Drive, Suite 210  
 Deerfield Beach, Florida 33441  
 Palm Beach County—305/985-3800  
 Broward County—305/426-4008

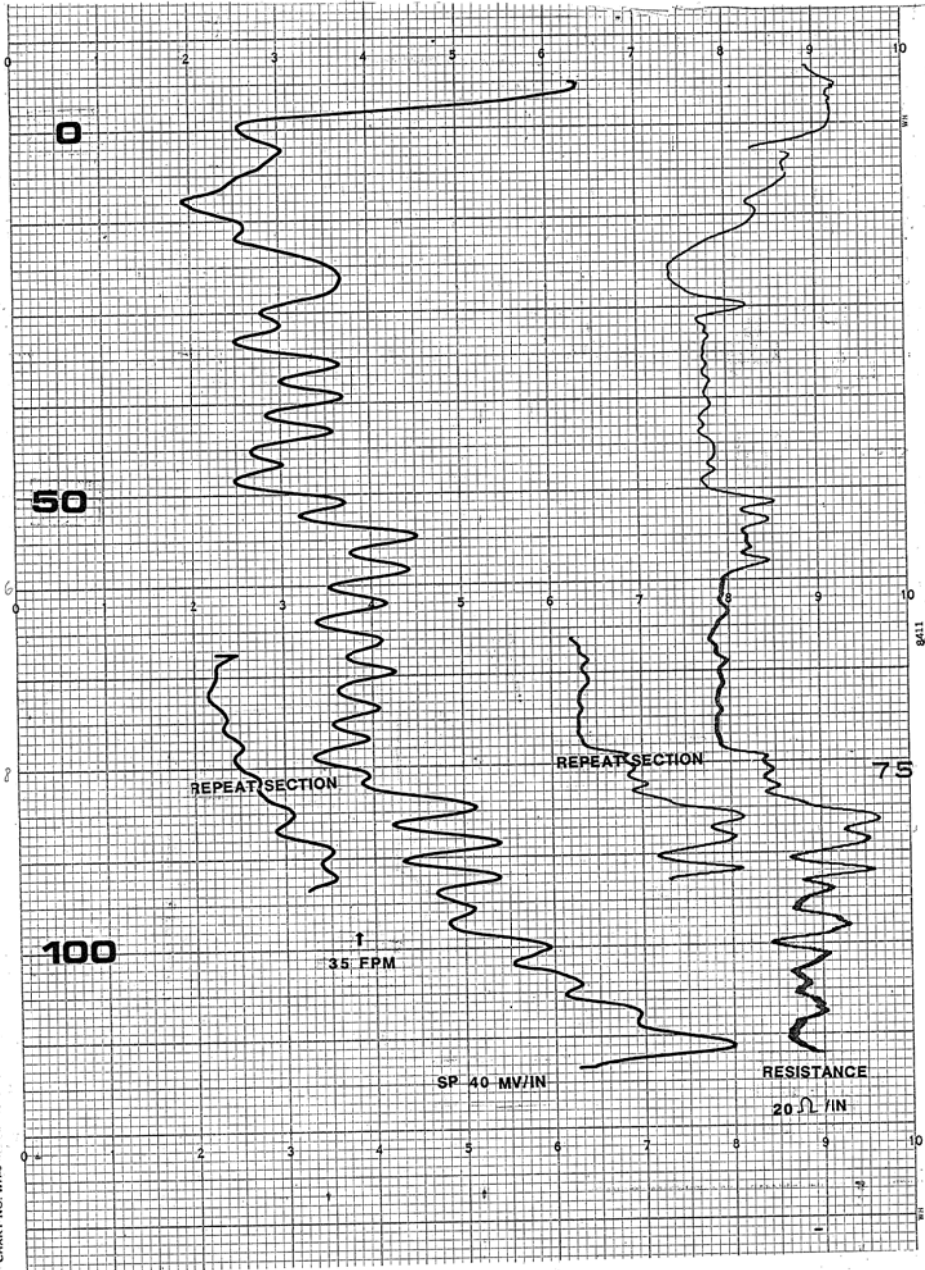


CHART NO. 4111  
 MADE IN U.S.A.  
 TEXAS INSTRUMENTS INCORPORATED, HOUSTON, TEXAS, U.S.A.  
 CHART NO. 4111