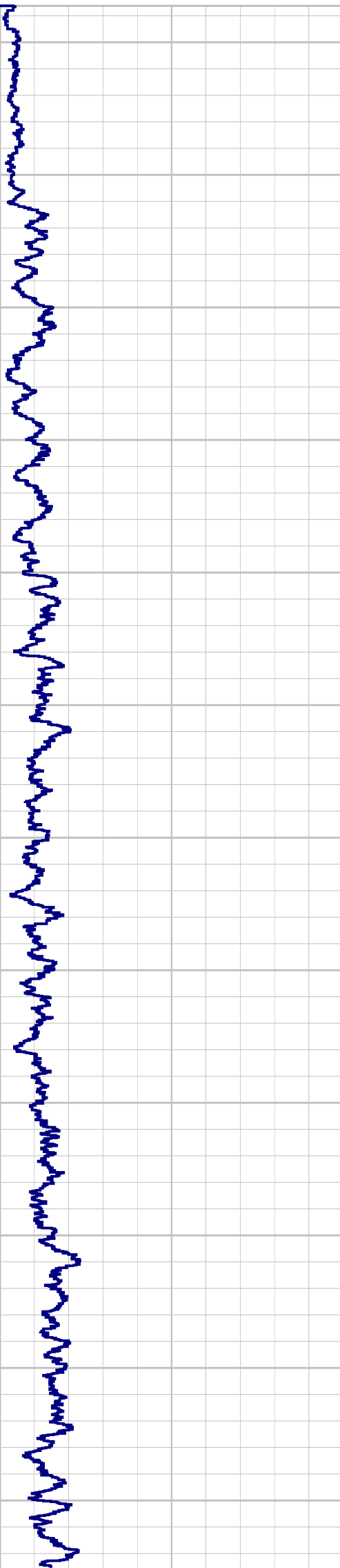




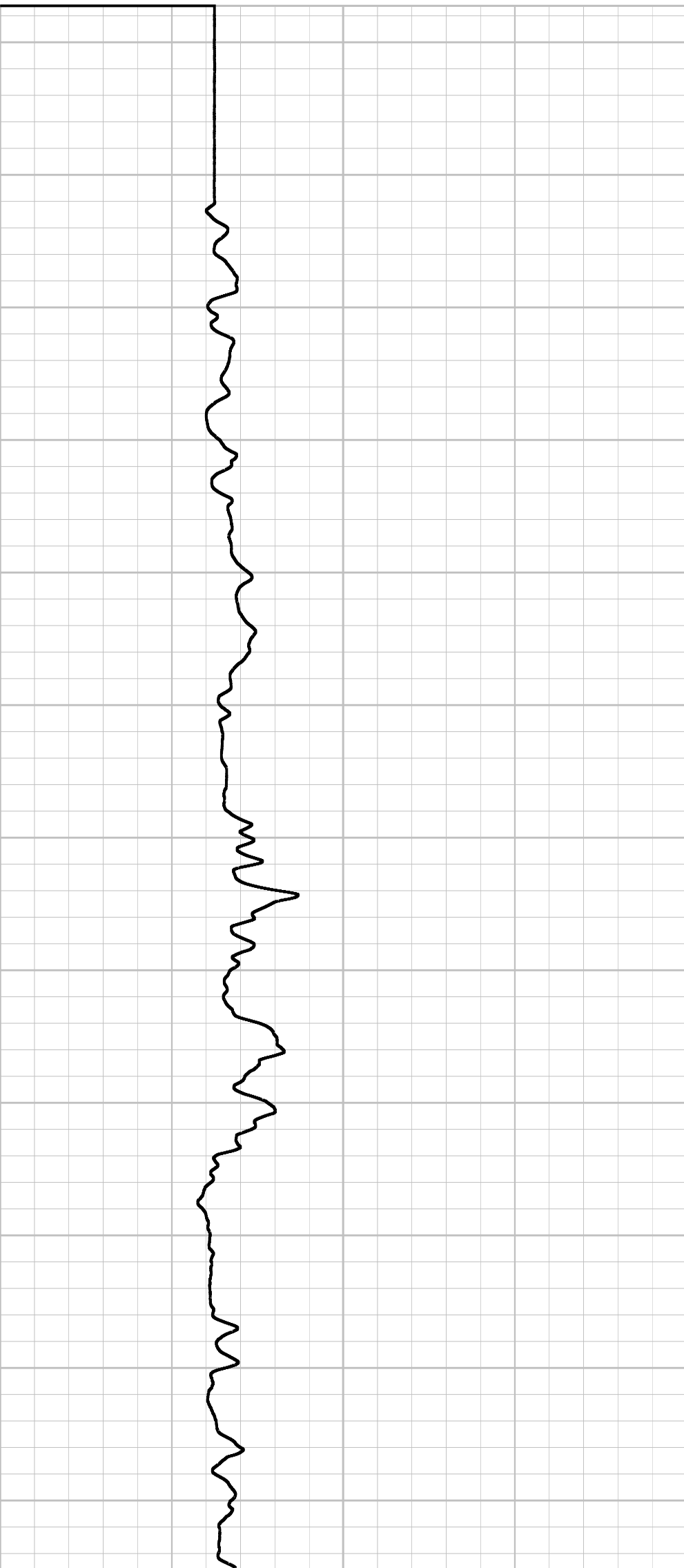
NGAM CPS

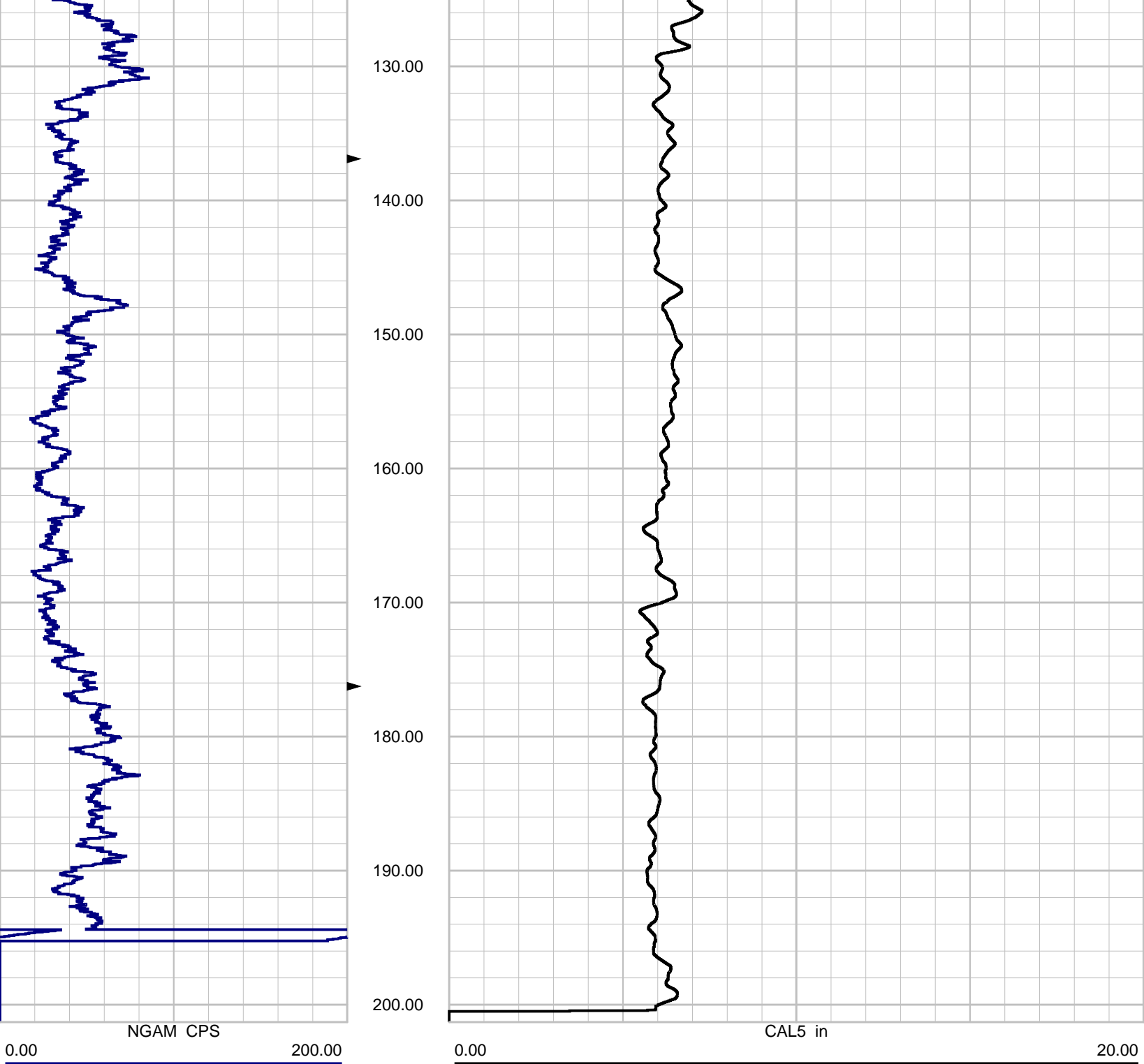
0.00 200.00



CAL5 in

0.00 20.00



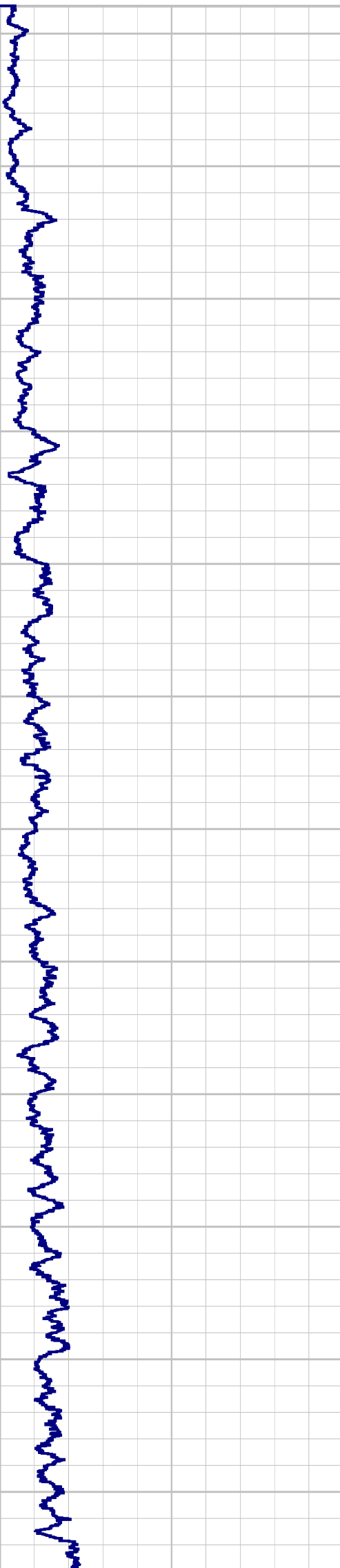


Depth: 7.00 ft Date: 29 May 2012 Time: 17:44:54 File: "C:\WinLogger\Data\WELL 22B\22 CALIPER1.LOG"



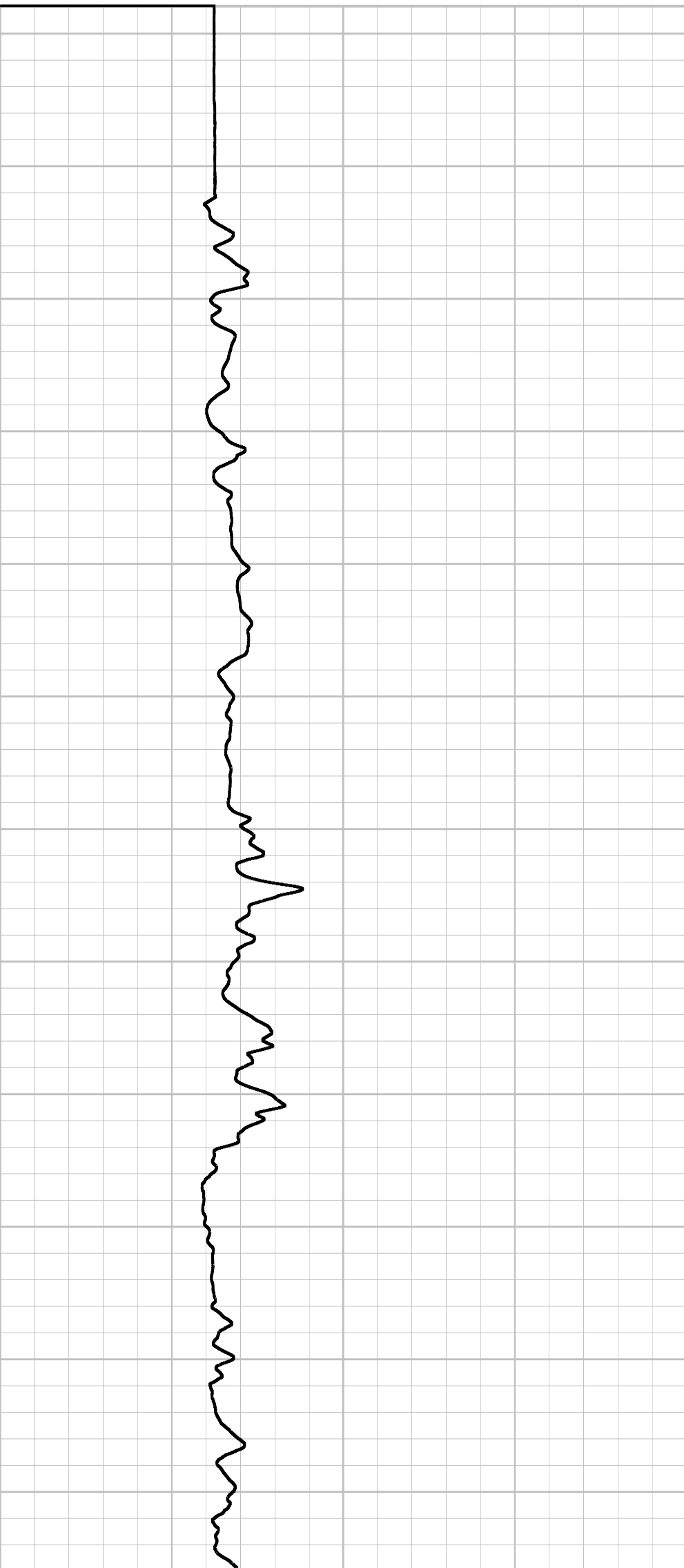
NGAM CPS

0.00 200.00

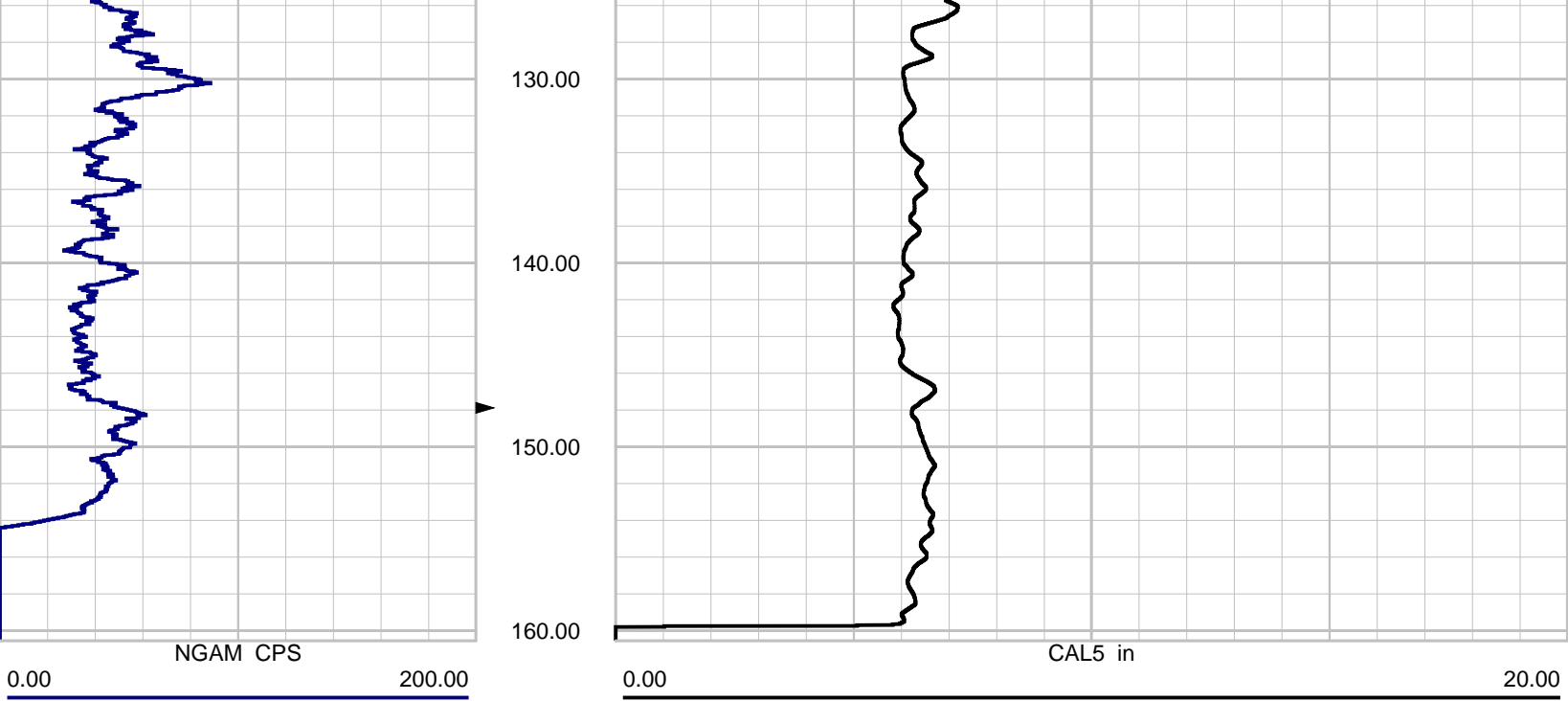


CAL5 in

0.00 20.00



10.00  
20.00  
30.00  
40.00  
50.00  
60.00  
70.00  
80.00  
90.00  
100.00  
110.00  
120.00

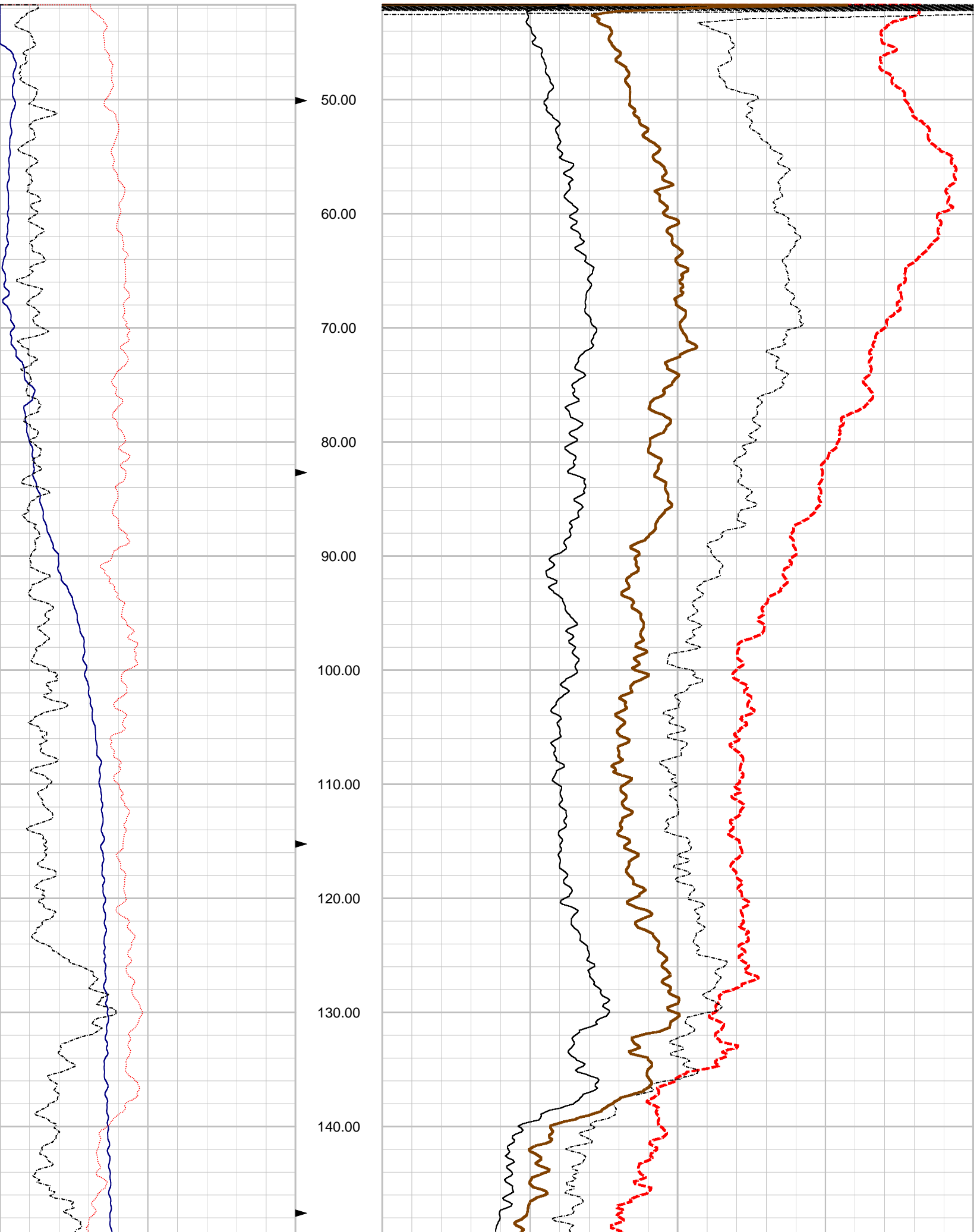


Depth: 7.00 ft Date: 29 May 2012 Time: 18:01:11 File: "C:\WinLogger\Data\WELL 22B\22 CALIPER1 REP.LOG"

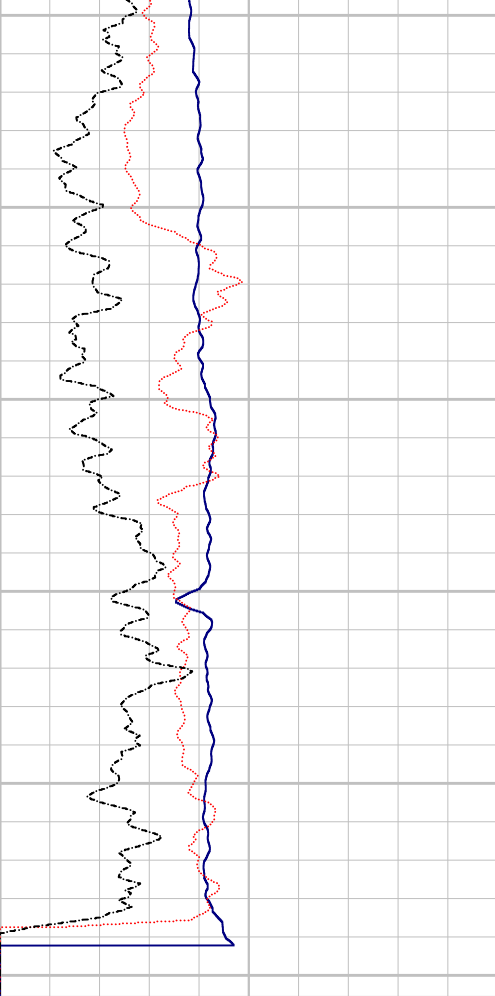


100.00	SP mV	500.00
0.00	SPR OHM	100.00
0.00	NGAM CPS	200.00

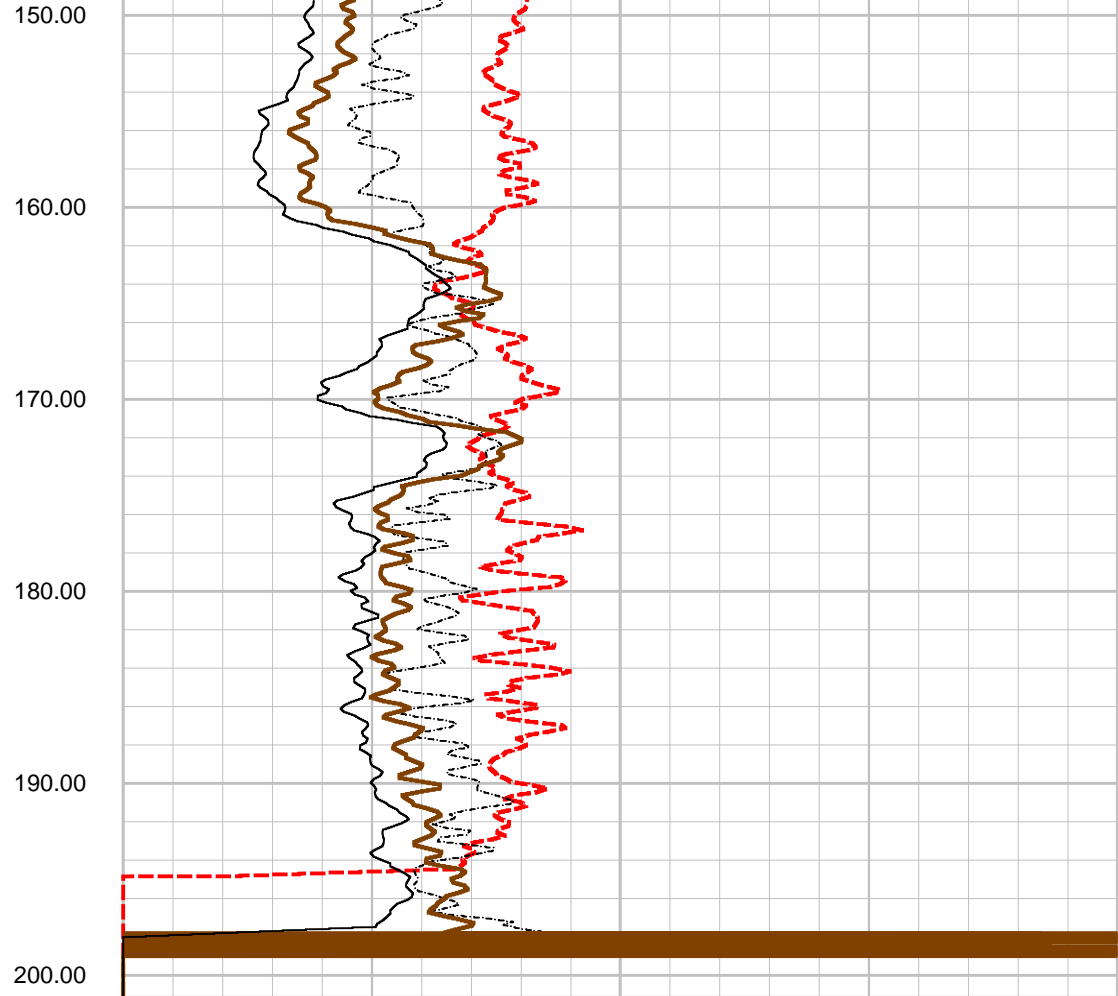
0.00	N64I OHMM	200.00
0.00	N32I OHMM	200.00
0.00	N16I OHMM	200.00
0.00	N8IN OHMM	200.00







100.00	SP mV	500.00
0.00	SPR OHM	100.00
0.00	NGAM CPS	200.00

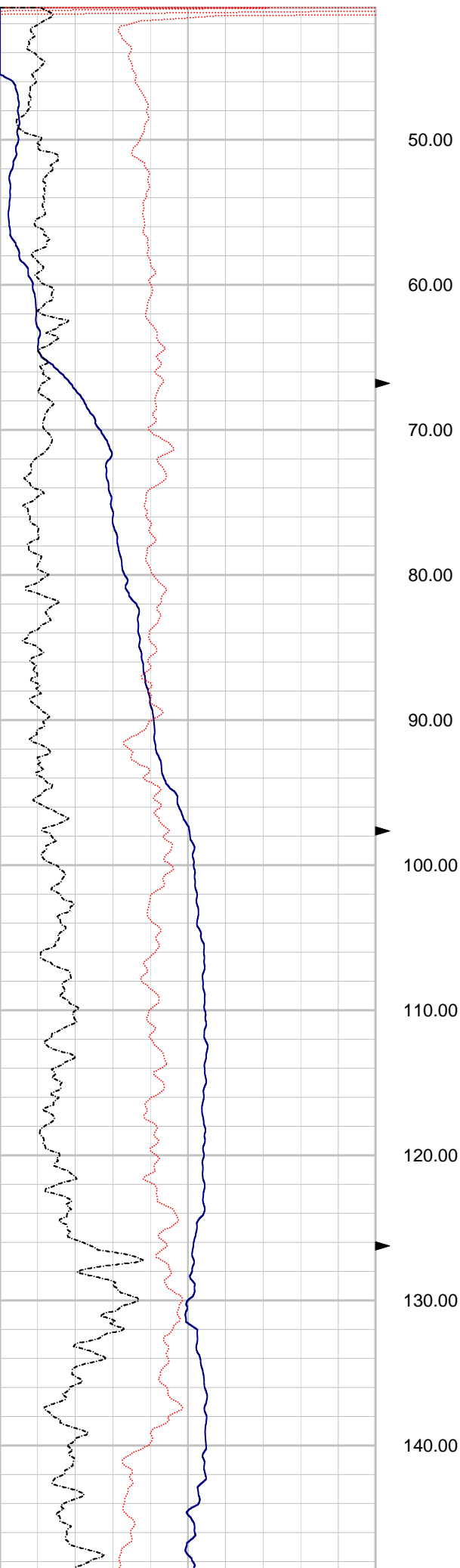


0.00	N64I OHMM	200.00
0.00	N32I OHMM	200.00
0.00	N16I OHMM	200.00
0.00	N8IN OHMM	200.00

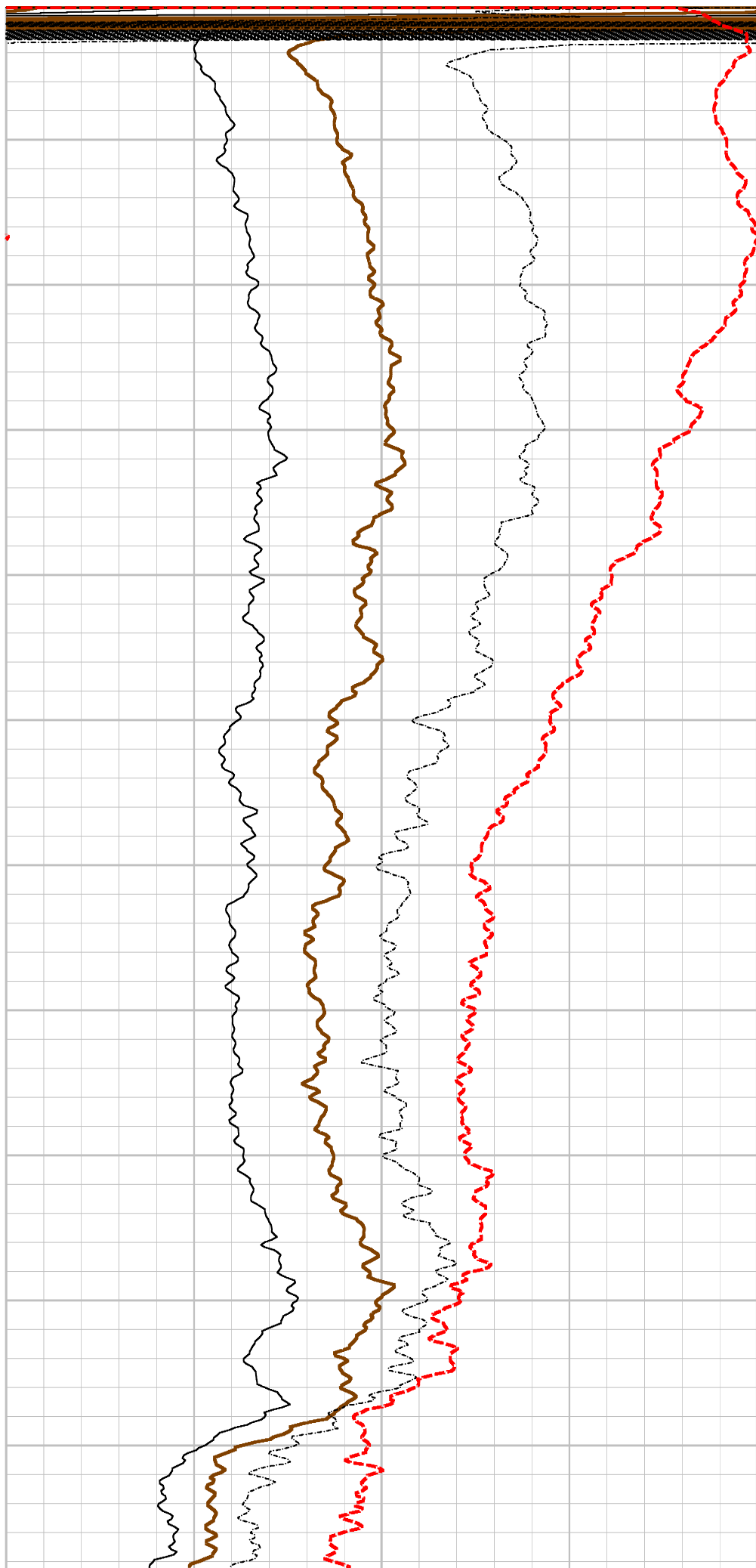
Depth: 41.00 ft Date: 29 May 2012 Time: 18:27:05 File: "C:\WinLogger\Data\WELL 22B\22 ELOG1.LGX"

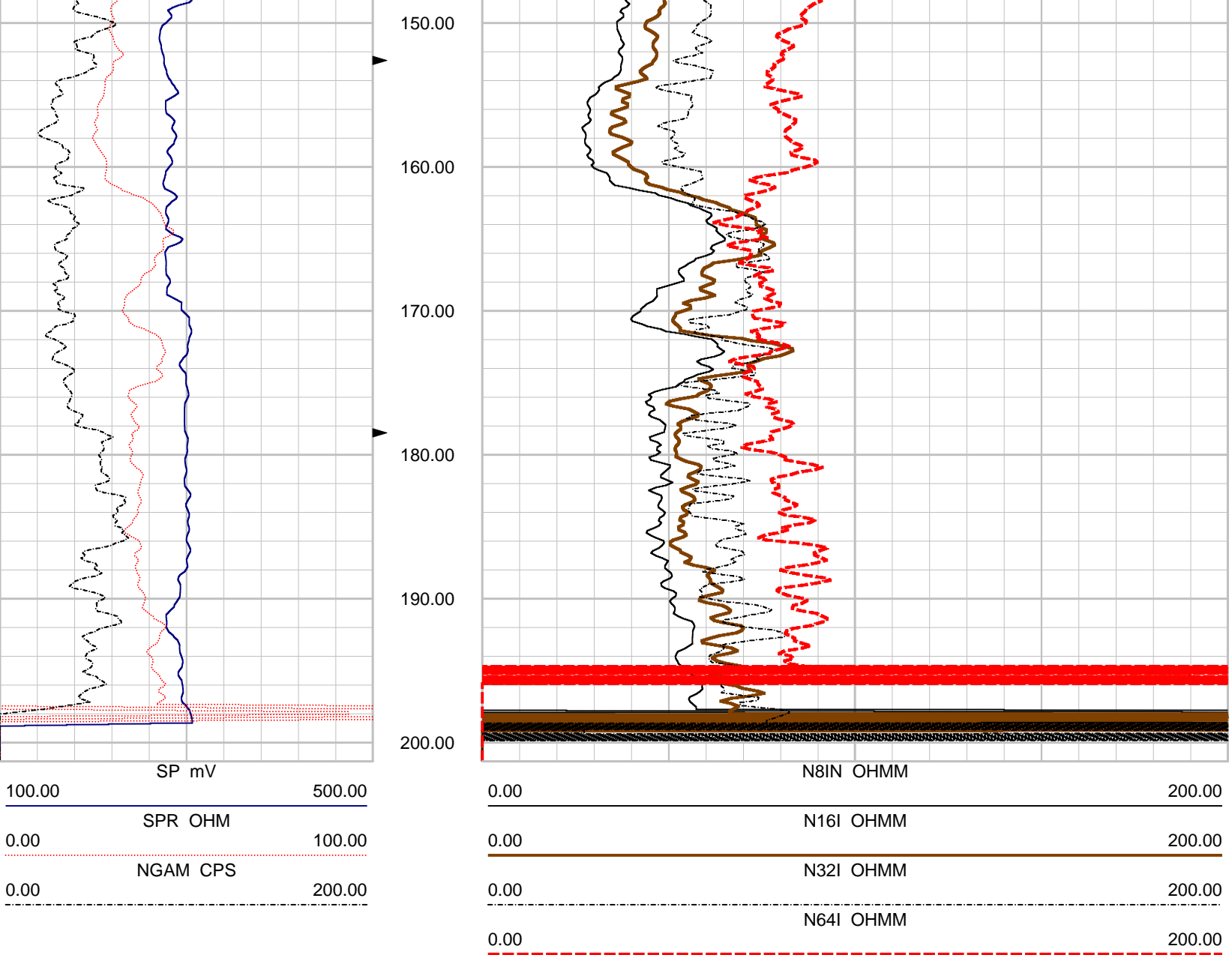


100.00	SP mV	500.00
0.00	SPR OHM	100.00
0.00	NGAM CPS	200.00



0.00	N8IN OHMM	200.00
0.00	N16I OHMM	200.00
0.00	N32I OHMM	200.00
0.00	N64I OHMM	200.00



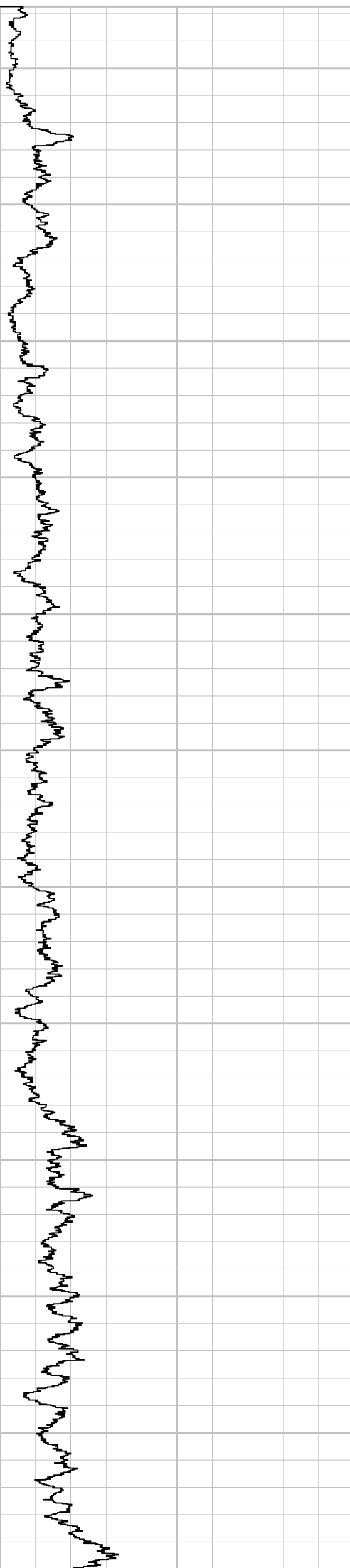


Depth: 40.00 ft Date: 29 May 2012 Time: 18:38:08 File: "C:\WinLogger\Data\WELL 22B\22 ELOG1 REP.LGX.LGX"



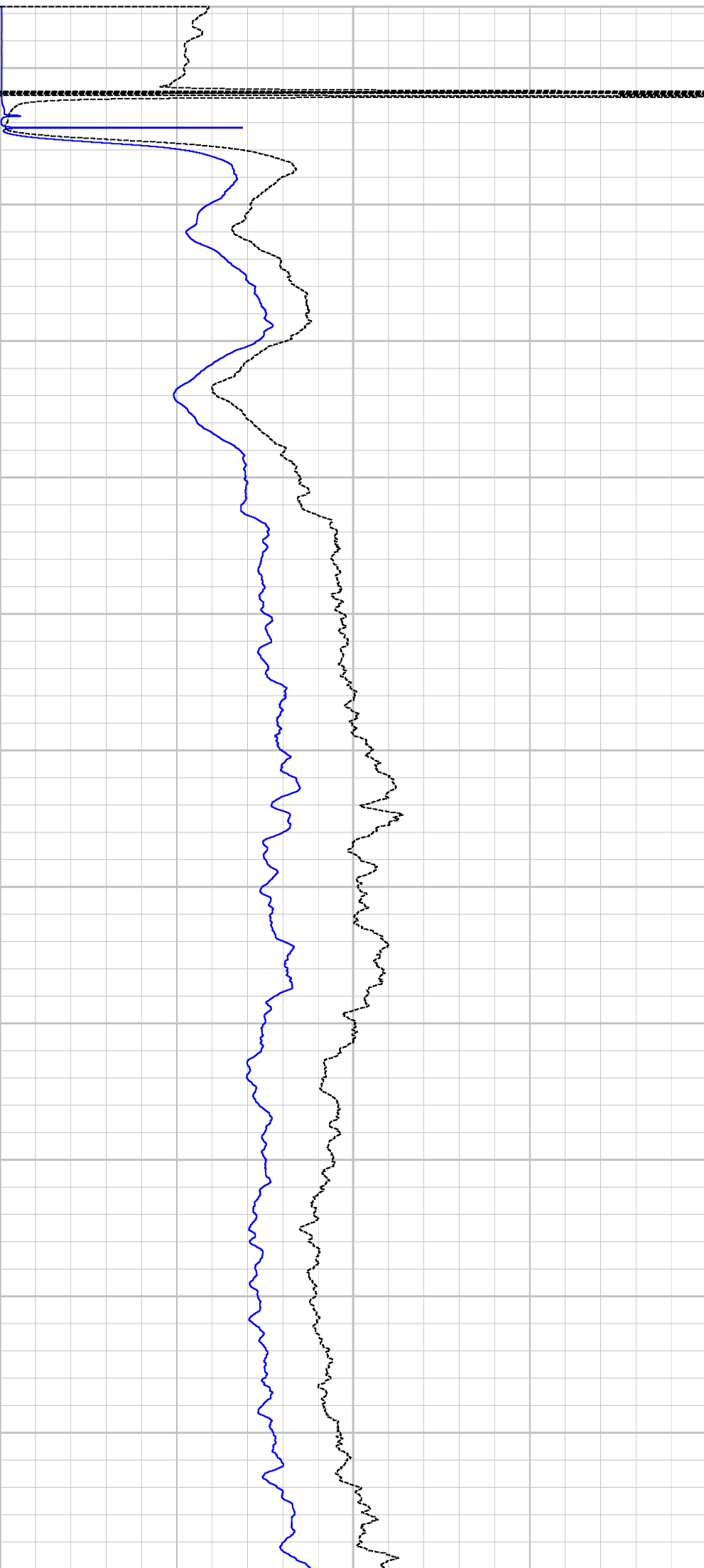
NGAM CPS

0.00 200.00



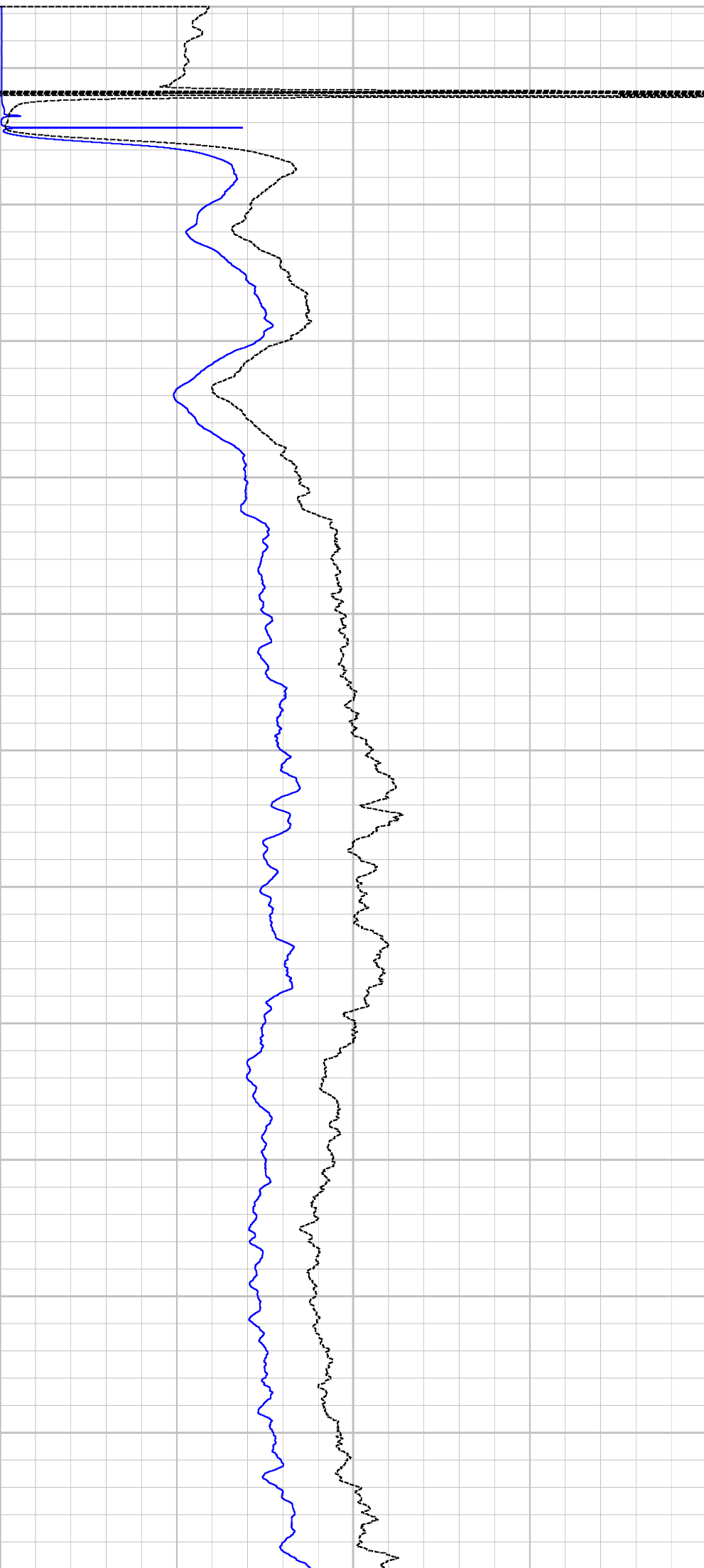
SHLW Ohm.m

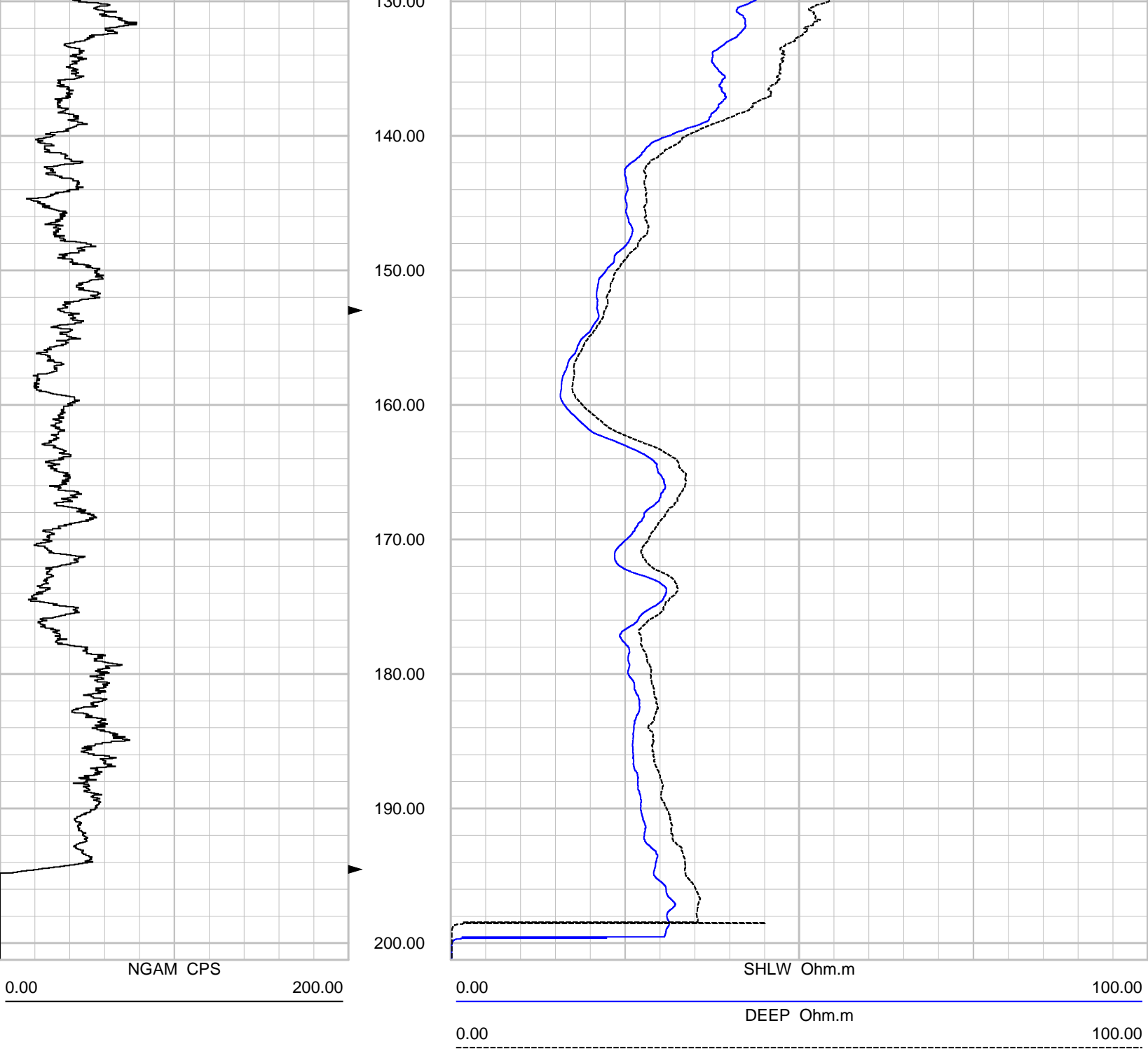
0.00 100.00



DEEP Ohm.m

0.00 100.00





Depth: 15.00 ft Date: 29 May 2012 Time: 19:03:41 File: "C:\WinLogger\Data\WELL 22B\22 DUIN1.LOG"





NGAM CPS

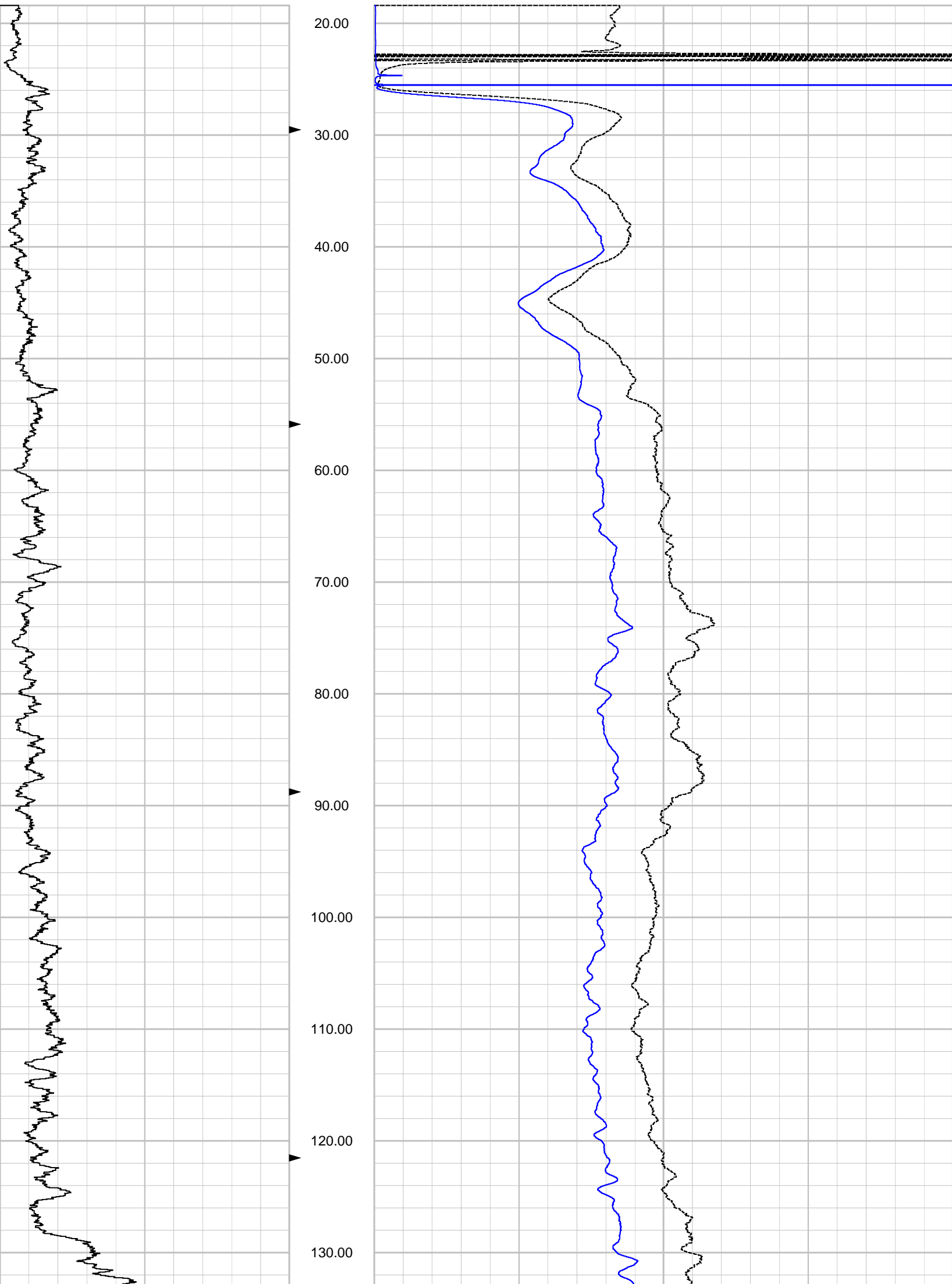
0.00 200.00

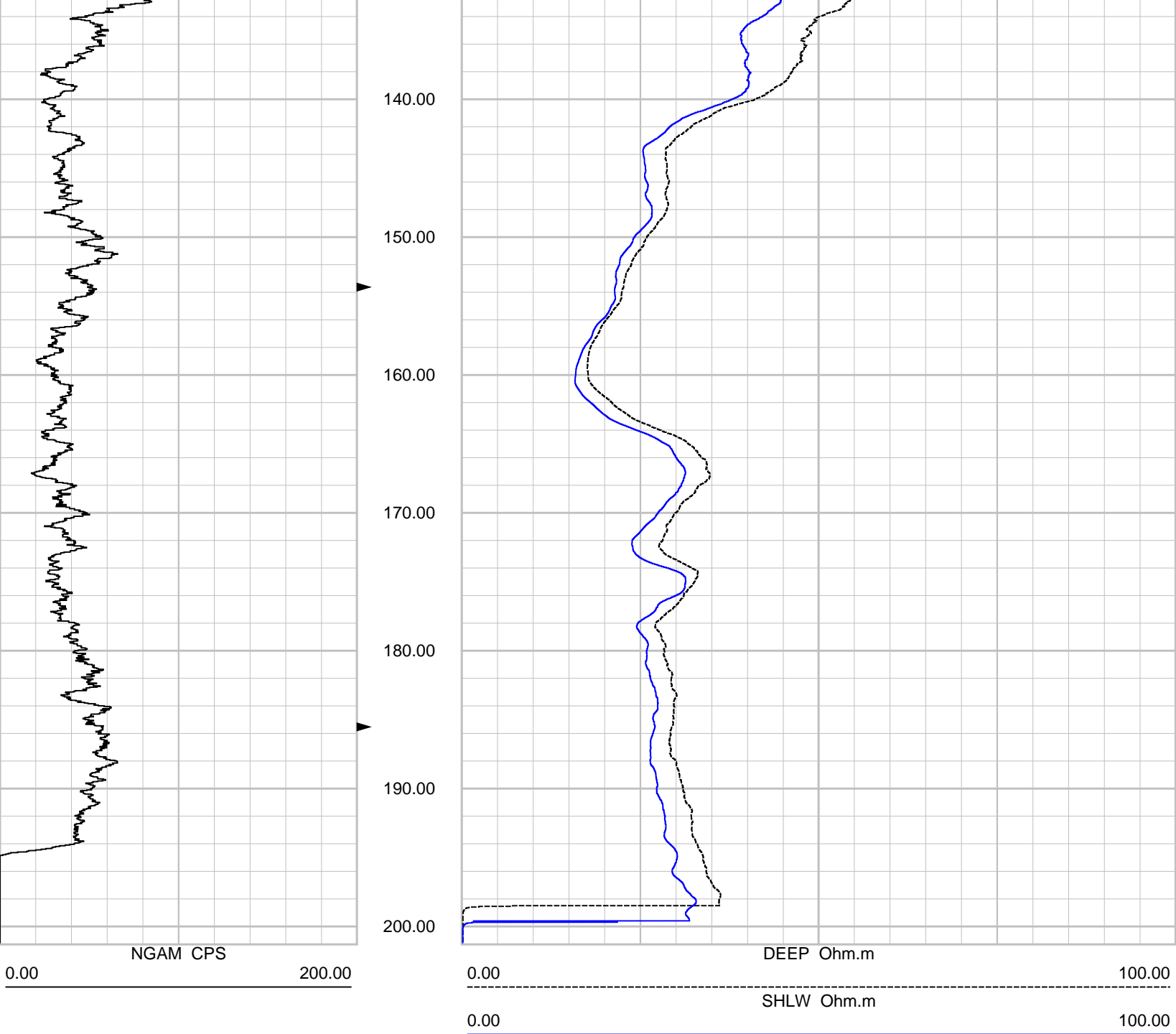
DEEP Ohm.m

0.00 100.00

SHLW Ohm.m

0.00 100.00





Depth: 18.00 ft Date: 29 May 2012 Time: 19:15:45 File: "C:\WinLogger\Data\WELL 22B\22 DUIN1 REP.LOG"