



FLOWMETER LOG

Company Diversified Drilling Corp.		Company Diversified Drilling Corporation	
Well	BRY-MW	Well	BRY-MW
Field	Berry Grove	Field	Berry Grove
County	Hendry	County	Hendry
State/Prv	Florida	State/Prv	Florida
Location	Lat.: 26 42'30.636" N Long.: 81 29'48.865" W SFWMD	Other Services	XY/GR FRT G.L.
Permanent Datum	G.L.	Elevation	
Log Measured From	G.L.	K.B.	
Drilling Measured From	G.L.	D.F.	
		G.L.	
Date	4-FEB-2004		
Run Number	ONE		
Depth Driller	754'		
Depth Logger	754'		
Bottom Logged Interval	753'		
Top Log Interval	495'		
Open Hole Size	4"		
Type Fluid	WATER		
Density / Viscosity	NANA		
Max. Recorded Temp.	na		
Estimated Cement Top	NA		
Time Well Ready	10:00 2/4/04		
Time Logger on Bottom	14:00 2/4/04		
Equipment Number	MWGS-1		
Location	Ft Myers		
Recorded By	S Miller		
Witnessed By	E. Redenmaid		
Run Number	ONE		
Bit	4"		
From	566'		
To	754'		
Size	4" PVC		
Wt/Ht	Sched 40		
Top	SURFACE		
Bottom	566'		
Casing Record			
Surface String			
Prod. String			
Production String			
Liner			
Invoice No.	2004021	P.O. #	25542
		Job No.	690028
			* FIELD PRINT *

<<< Fold Here >>>

All interpretations are opinions based on inferences from electrical or other measurements and we cannot and do not guarantee the accuracy or correctness of any interpretation, and we shall not, except in the case of gross or willful negligence on our part, be liable or responsible for any loss, costs, damages, or expenses incurred or sustained by anyone resulting from any interpretation made by any of our officers, agents or employees. These interpretations are also subject to our general terms and conditions set out in our current Price Schedule.

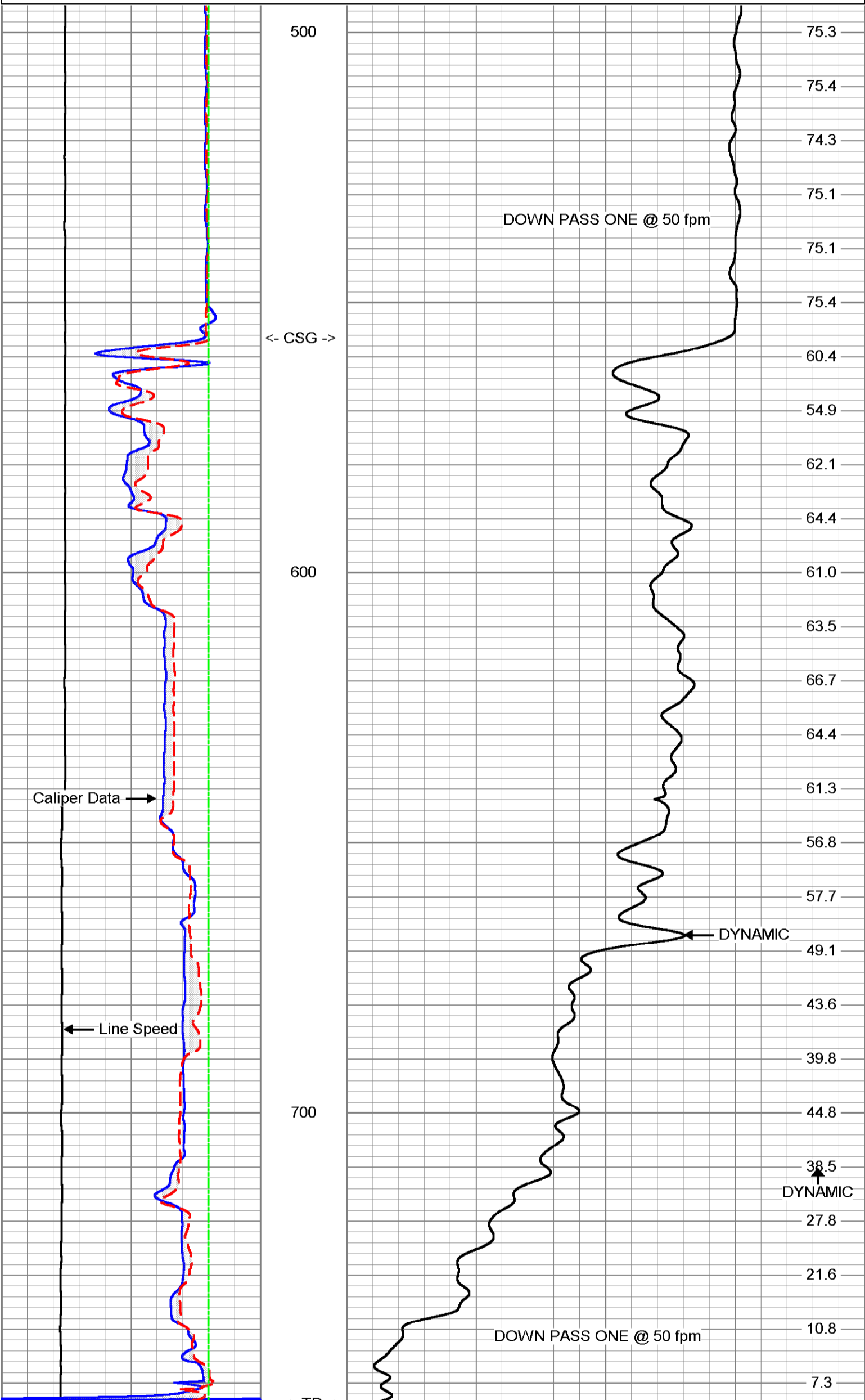
Comments

A DYNAMIC down pass was made at 50 fpm.

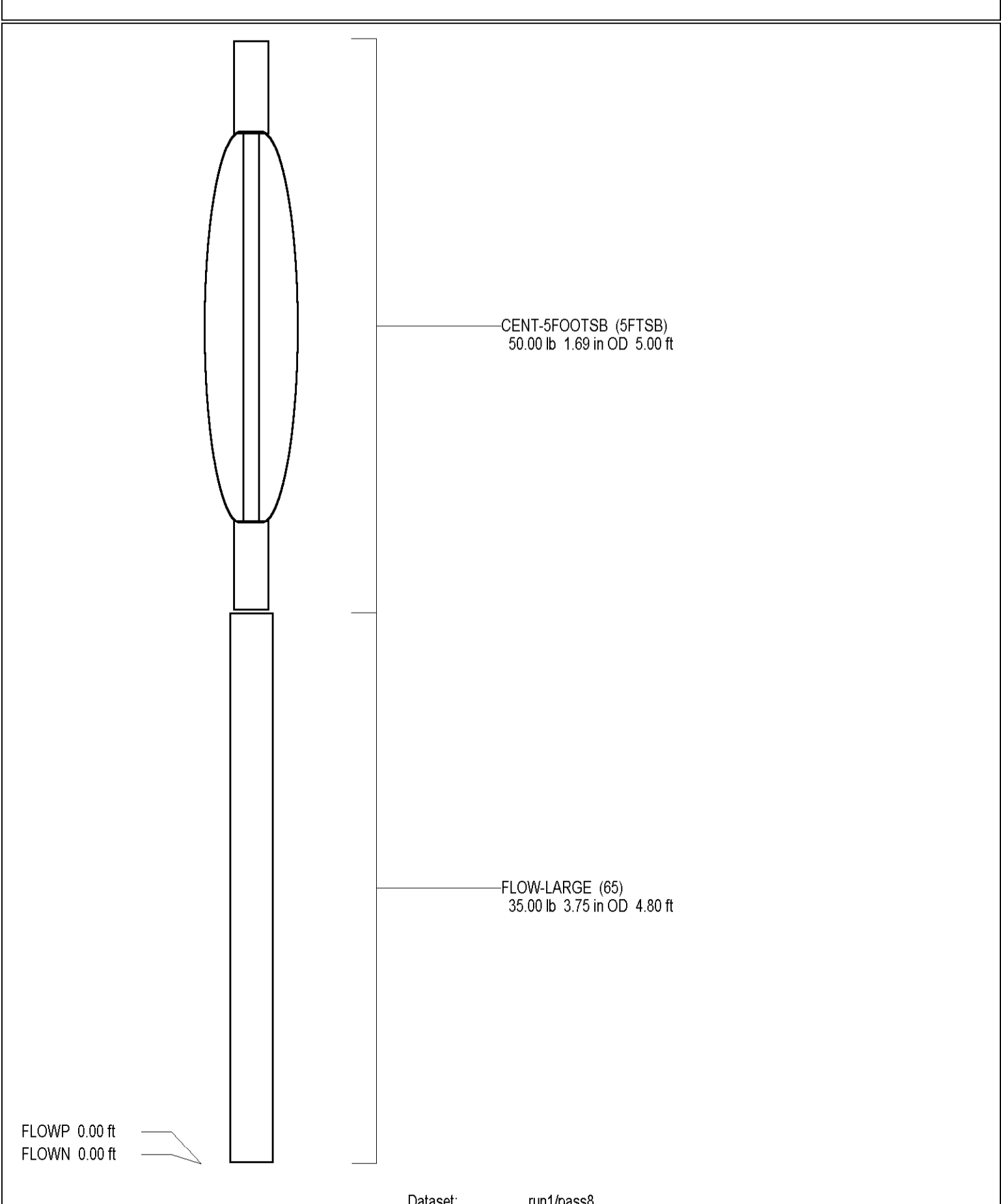
MV Geophysical Dynamic Down @ 50 fpm

Database File: ddcbrmw.db
 Dataset Pathname: SD50
 Presentation Format: QBRY-PM
 Dataset Creation: Mon Feb 23 10:11:20 2004
 Charted by: Depth in Feet scaled 1:240

0 DYNAMIC LINE SPEED (ft/min)	0	DYNAMIC (cps)	100
8 X-CALIPER (in)	3		
8 Y CALIPER (in)	3		
8 BIT SIZE (in)	3		



0 DYNAMIC LINE SPEED (ft/min)	0	DYNAMIC (cps)	100
8 X-CALIPER (in)	3		
8 Y CALIPER (in)	3		
8 BIT SIZE (in)	3		



Dataset: run1/pass8
 Total Length: 9.80 ft
 Total Weight: 85.00 lb
 O.D.: 3.75 in