



# RMBAKER LLC

WELL C-462  
UWI C-462

Geology and Geophysics

8600 Oldbridge Lane  
Orlando, FL 32819  
mobile ph 407-733-8958

PROFESSIONAL LICENSES  
Geologist PG2186  
Geology Business GB458

rob@rmbaker.com  
www.rmbaker.com

HEADER NOTES:

COMP	SFWMD		
LOC	IMMOKALEE		
FLD	IMMOKALEE		
CNTY	COLLIER		
STAT	FL		
PROV	FL		
CTRY	USA		
LATI	26 27 27 27324	X	
LONG	-81 26 11.27456	Y	
GDAT	WGS84	HDAT	
SEC		ELEV	
TWP		V DAT	
RGE			

ALL SERVICES:  
NATURAL GAMMA  
WATER QUALITY  
ACOUSTIC TELEVIEWER

PERMANENT DATUM:

LOG MEASURED FROM: GROUND SURFACE - 3.08 FT BELOW SURVEY REF.

DRILLING MEASURED FROM:

DATE	27 Feb 20	TYPE FLUID IN HOLE	WATER
RUN No	1	LOGGING SPEED (FT/MIN)	25
TYPE LOG	COMPOSITE	TROLLING DIRECTION	UP
DEPTH-DRILLER	110	PUMPING RATE (GPM)	N/A
DEPTH-LOGGER	94.6		
DRILLER			
RECORDED BY	RMB		
SRVC	RMBAKER LLC	API	N/A
WITNESSED BY	SFWMD	LIC	N/A

BOREHOLE RECORD		CASING RECORD				
RUN NO.	BIT FROM	TO	SIZE	MAT.	FROM	TO
1			8	STEEL	0	110

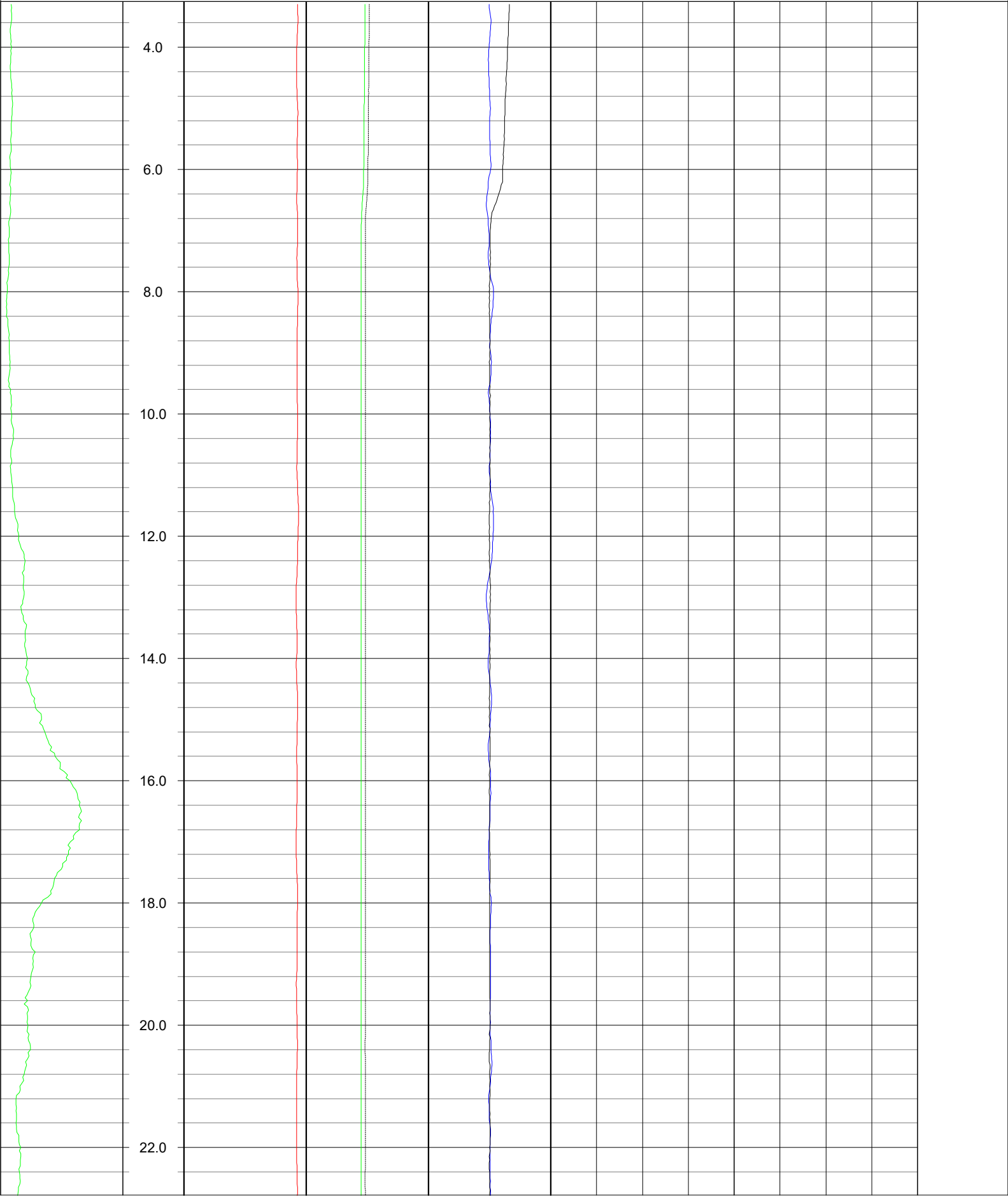
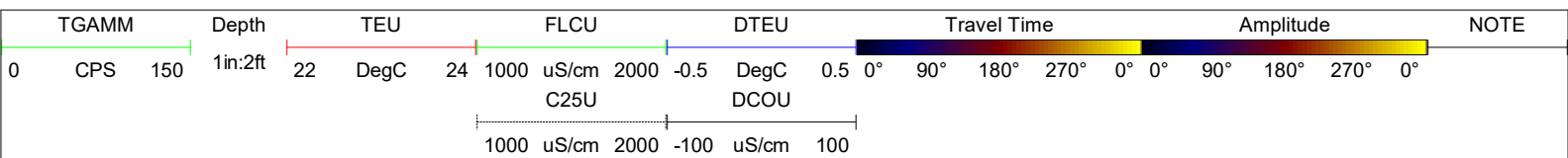
PROJECT NOTES:  
Monitoring reference elevation was 3.08 feet above ground surface.

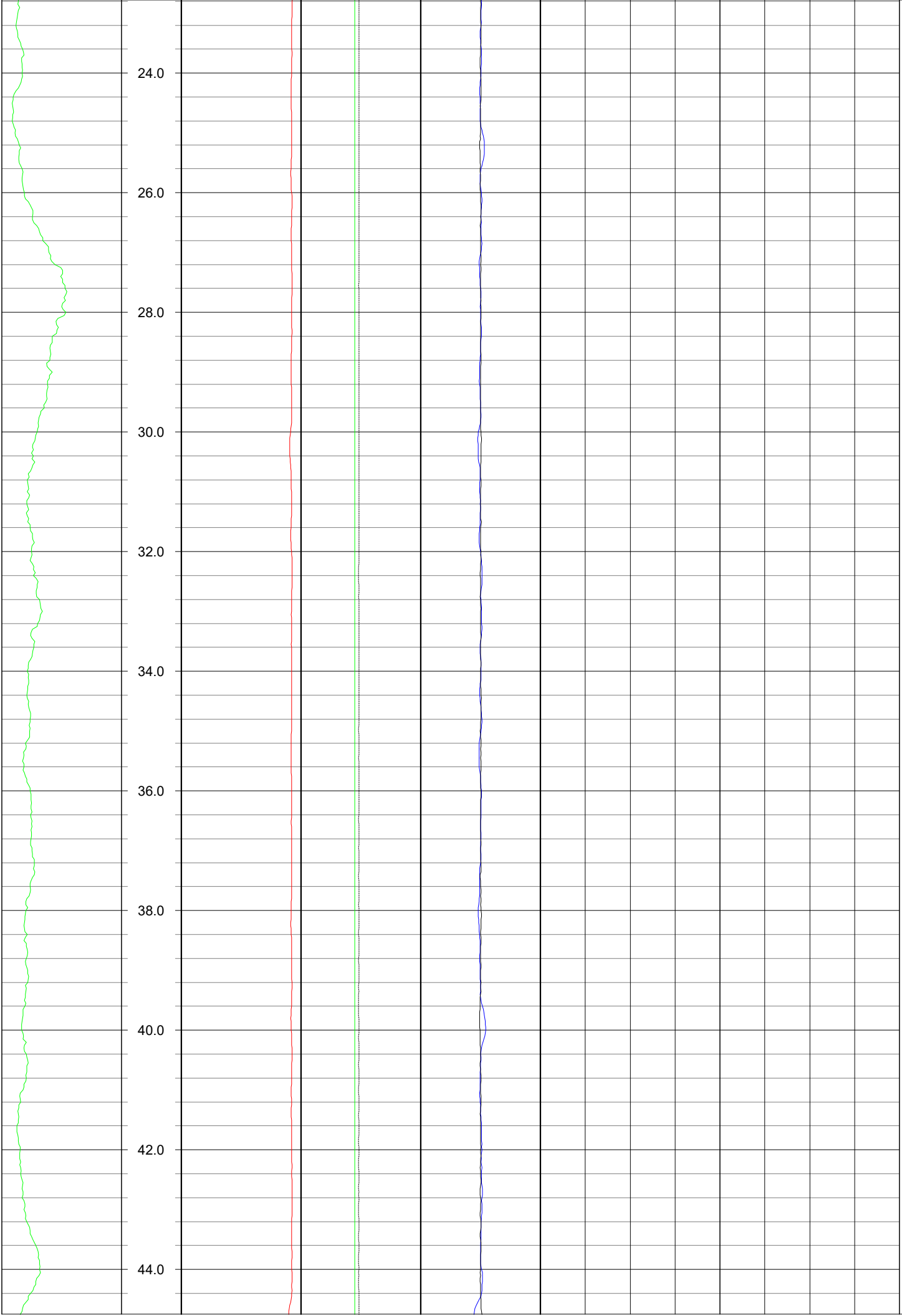
Sensors for temperature and conductivity may have been influenced by organic silts within the flow chamber.

ATV confirmed a cased borehole with joints. The bottom of the casing was not encountered. Slots or perforations in the casing were not observed.

LOG CODES					
3-arm caliper	CAL	long normal resistivity	RLN	deep induction conductivity	IDC
natural gamma (CPS)	GAMM	8 inch resistivity	R8	shallow induction conductivity	ISC
spontaneous potential	ESP	32 inch resistivity	R32	sonic interval velocity	DT
single point resistance	RES	deep induction resistivity	ILD	sonic porosity (RHG method)	SPHI
short normal resistivity	RSN	shallow induction resistivity	ILM	repeat designation	R

WATER QUALITY LOG CODES					
static fluid temperature	TEU	dynamic fluid conductivity	FLCP	caliper	CAL
dynamic fluid temperature	TEP	static differential cond.	DCOU	repeat designation	R
static differential temperature	DTEU	dynamic differential cond.	DCOP	natural gamma	GAMM
dynamic differential temp.	DTEP	static specific conductance	C25U	calibration correction	C





46.0

48.0

50.0

52.0

54.0

56.0

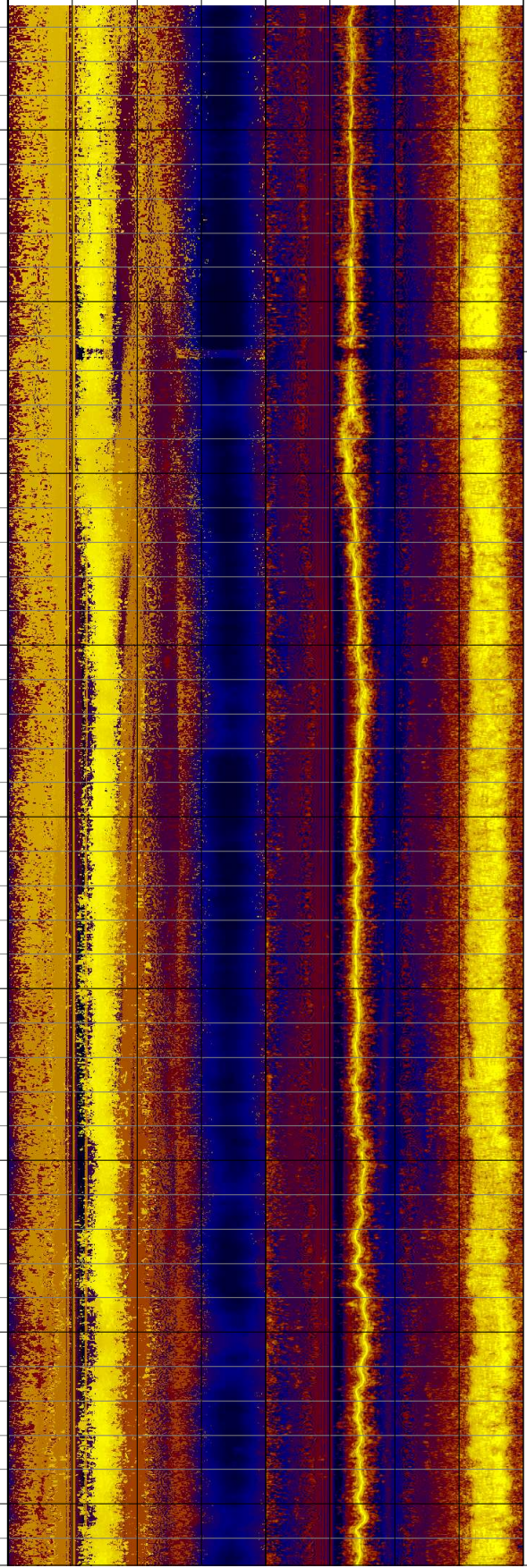
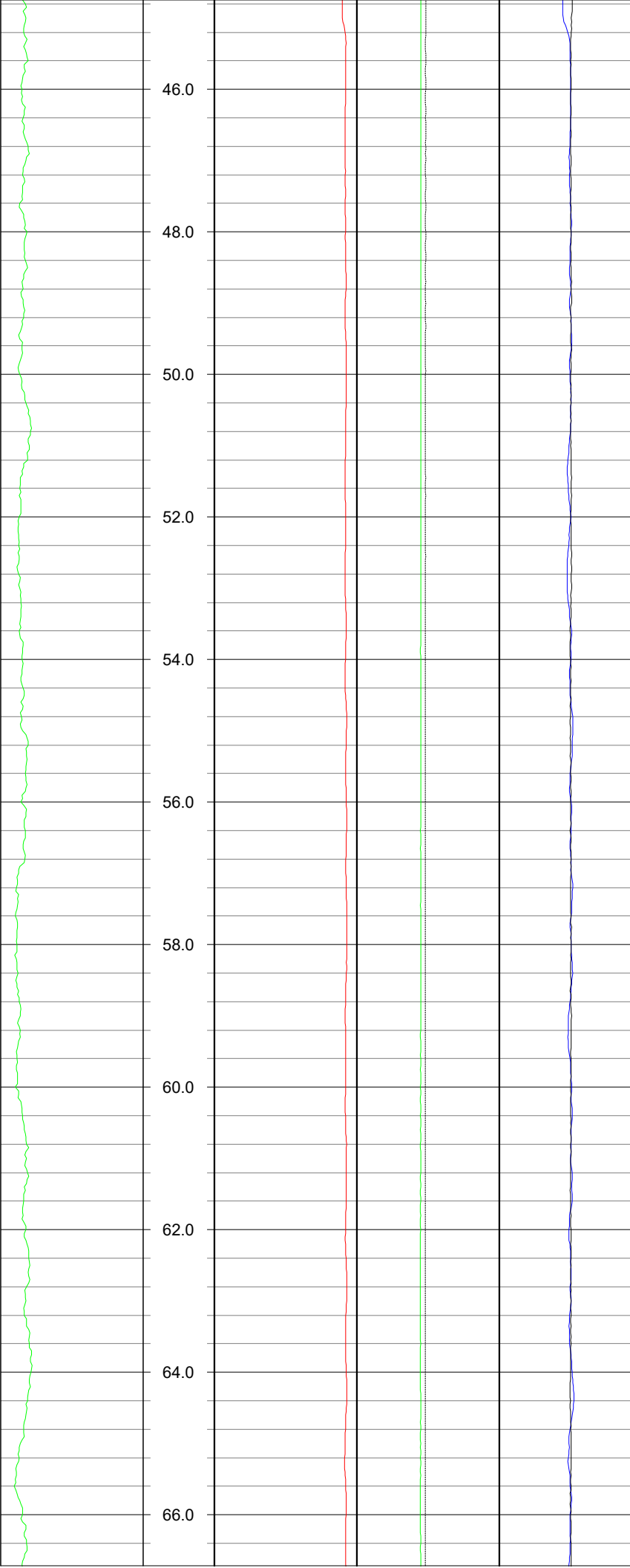
58.0

60.0

62.0

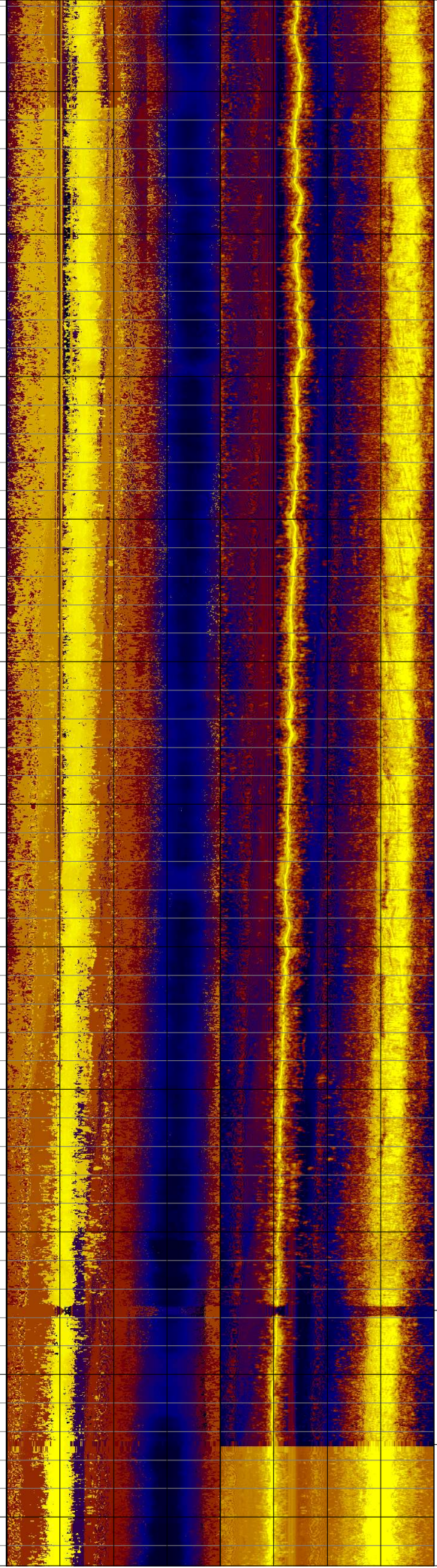
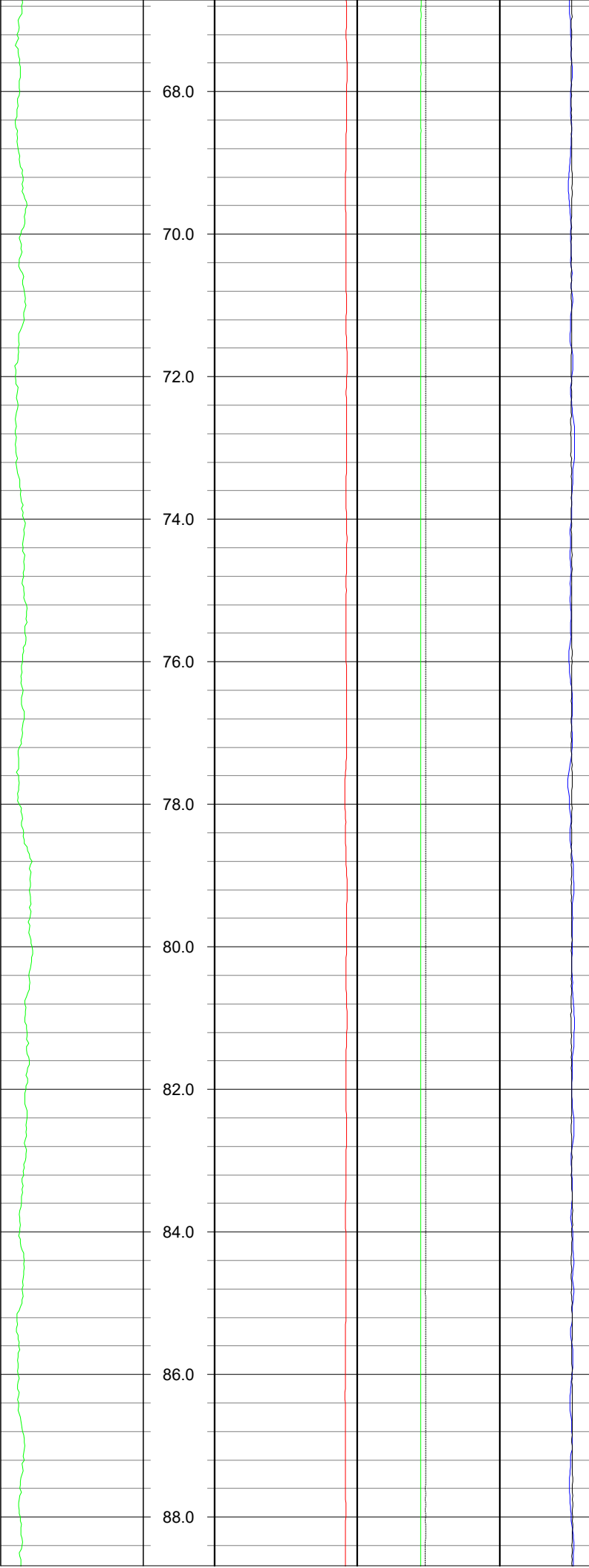
64.0

66.0



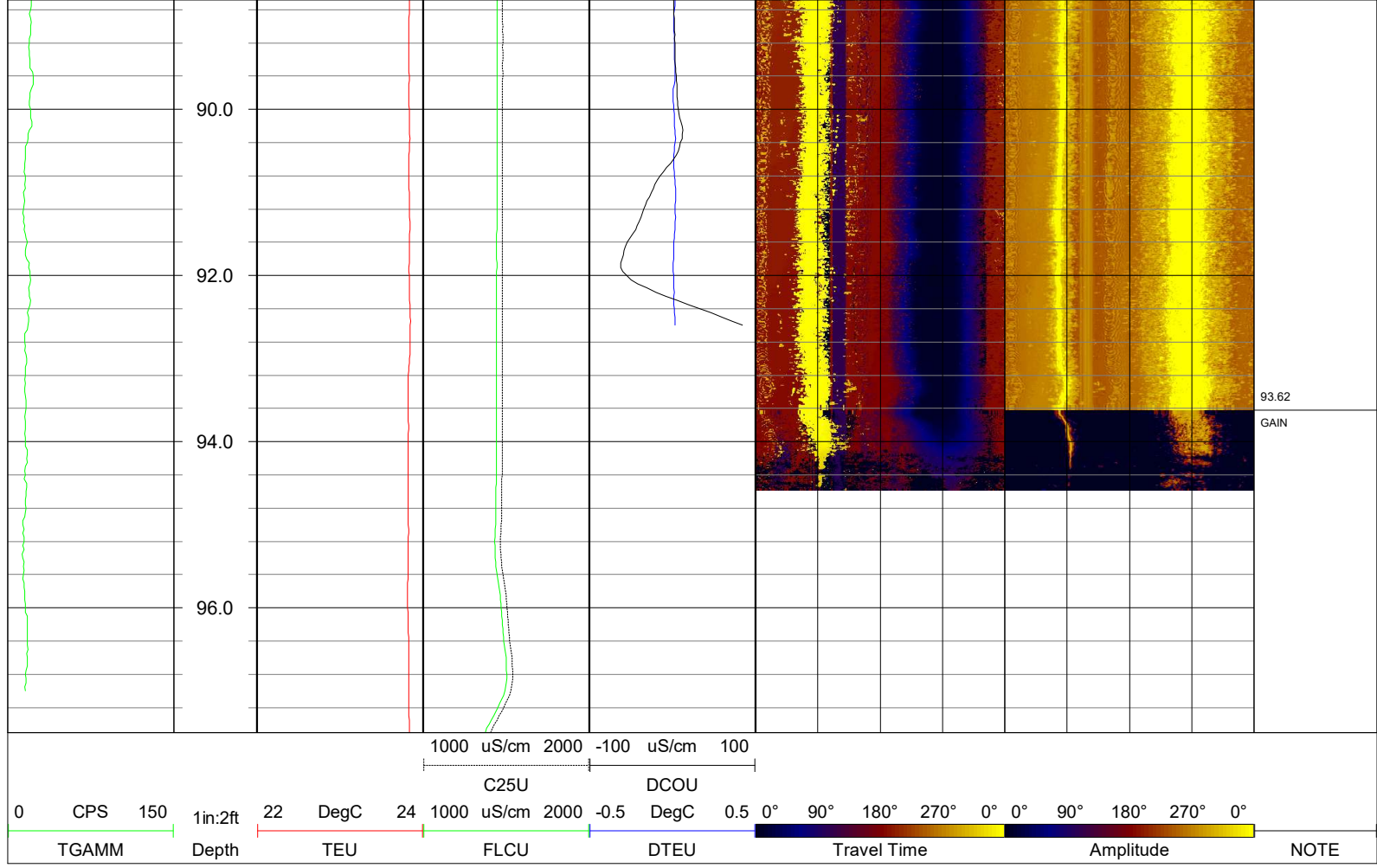
52.58  
JOINT

68.0  
70.0  
72.0  
74.0  
76.0  
78.0  
80.0  
82.0  
84.0  
86.0  
88.0



85.10  
JOINT

86.98  
GAIN



**NOTES:**

While due care has been exercised in the performance of these measurements and observations, in accordance with methodologies utilized by the general practitioner, RMLAKER LLC can make no representations, warranties, or guarantees with respect to latent or concealed conditions that may exist, which may be beyond the detection capabilities of the methodologies used, or that may extend beyond the areas and depths surveyed.

The geophysical well logs show subsurface conditions as they existed at the dates and locations shown, and it is not warranted that they are representative of subsurface conditions at other locations and times. If, at any time, different subsurface conditions from those observed are determined to be present, we must be advised and allowed to review and revise our observations if necessary.

Florida Licensed Geology Business GB 458

**END OF LOG**