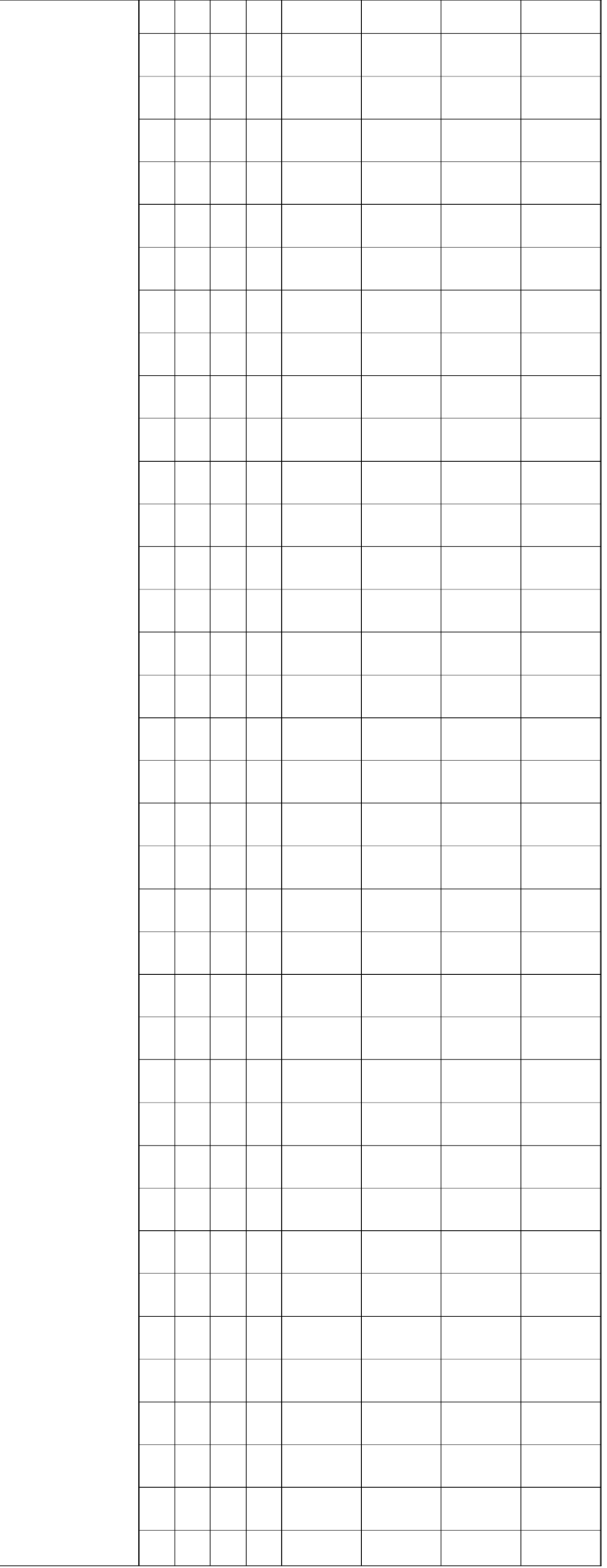
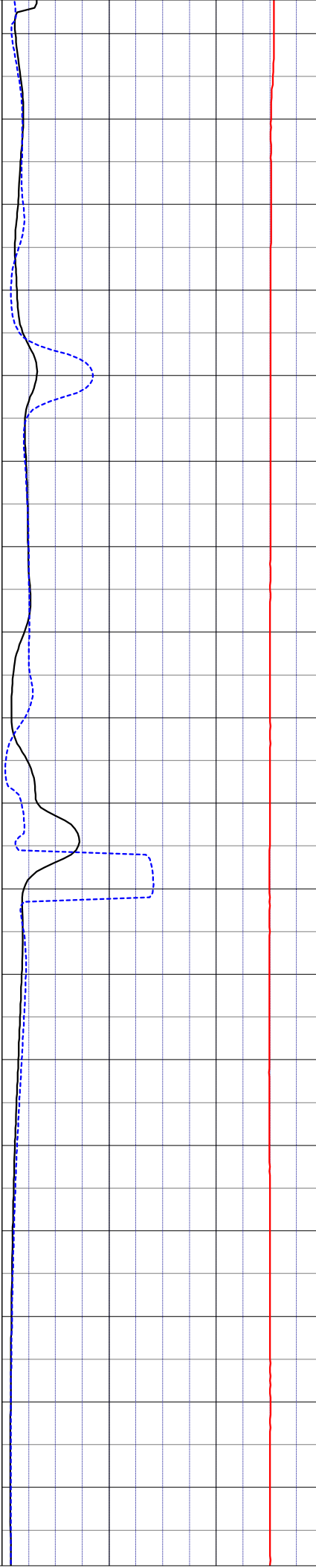
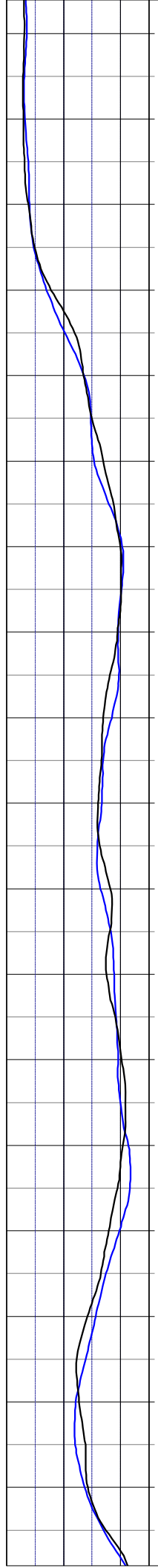
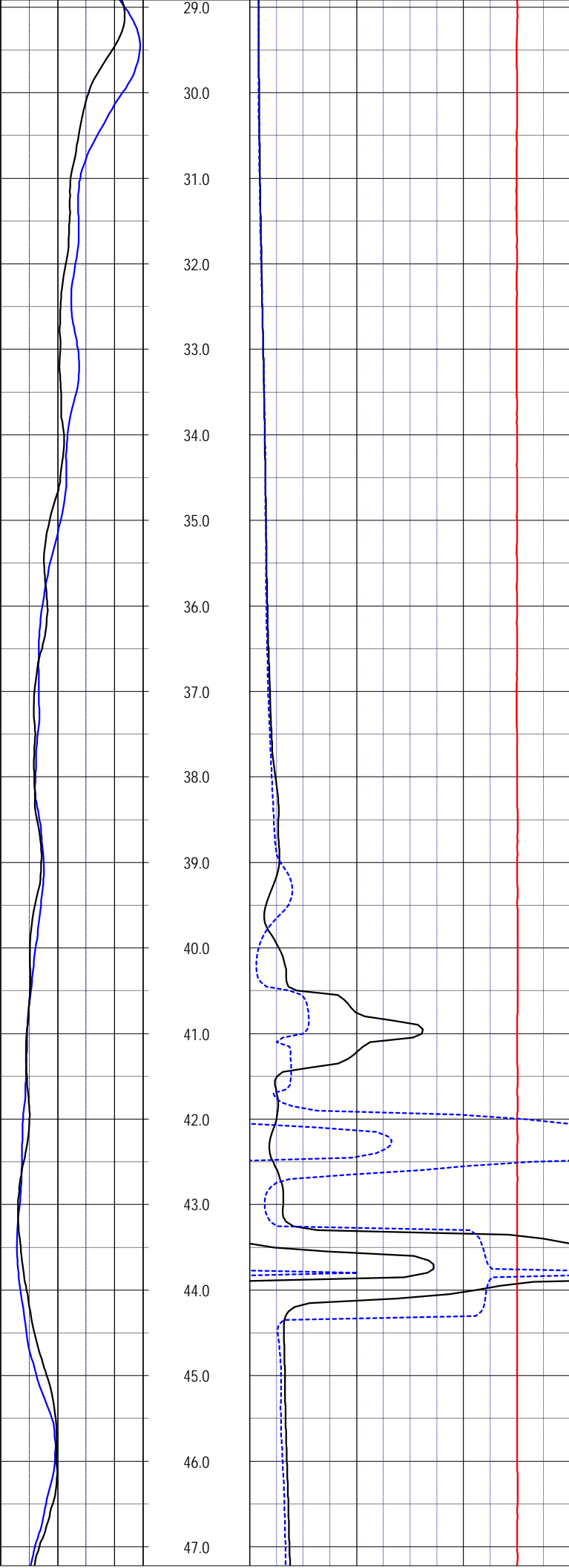




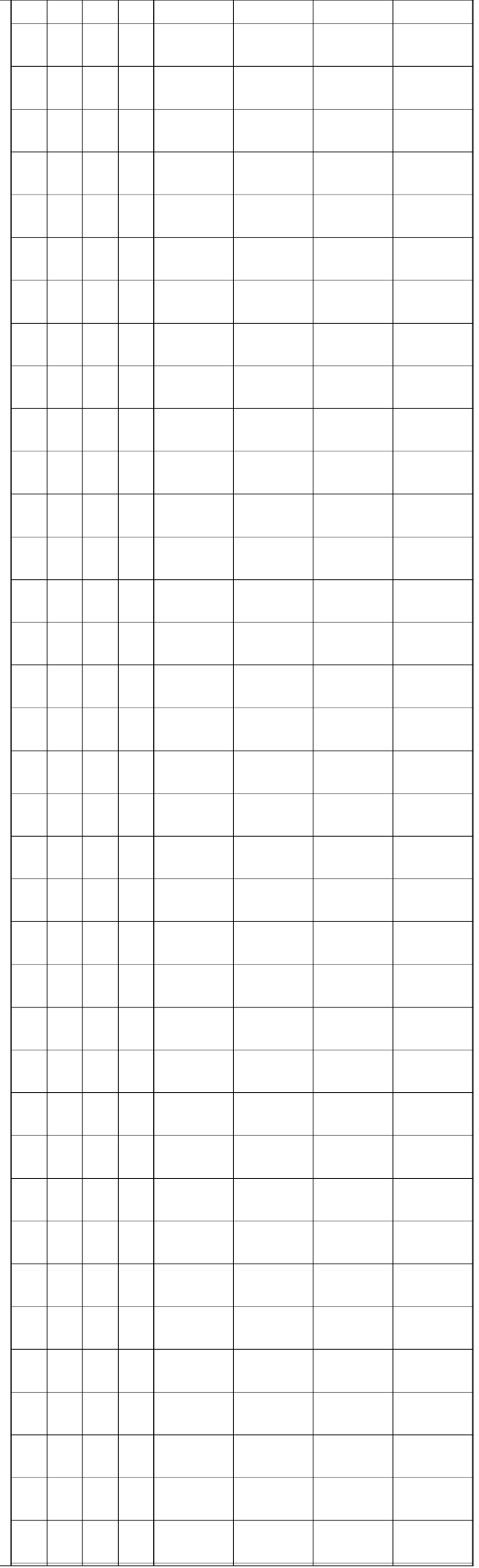
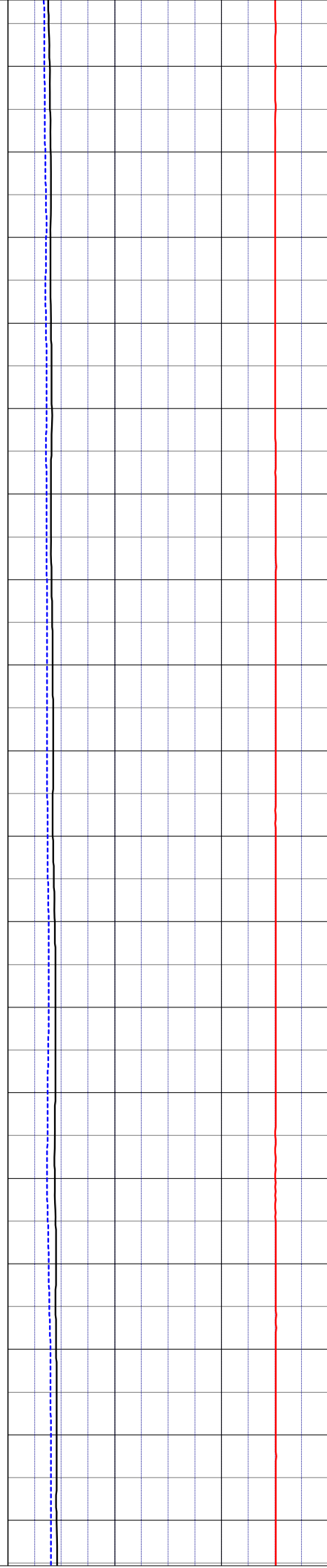
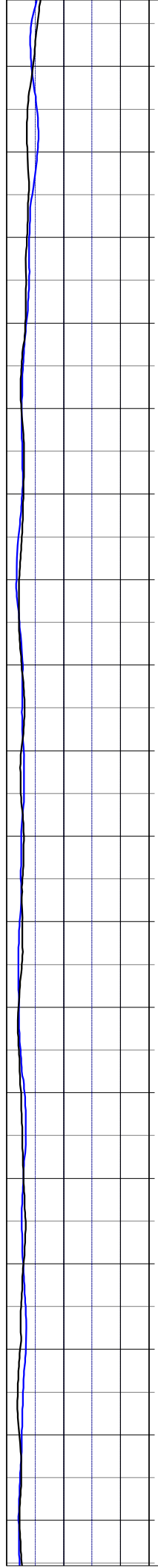
11.0  
12.0  
13.0  
14.0  
15.0  
16.0  
17.0  
18.0  
19.0  
20.0  
21.0  
22.0  
23.0  
24.0  
25.0  
26.0  
27.0  
28.0





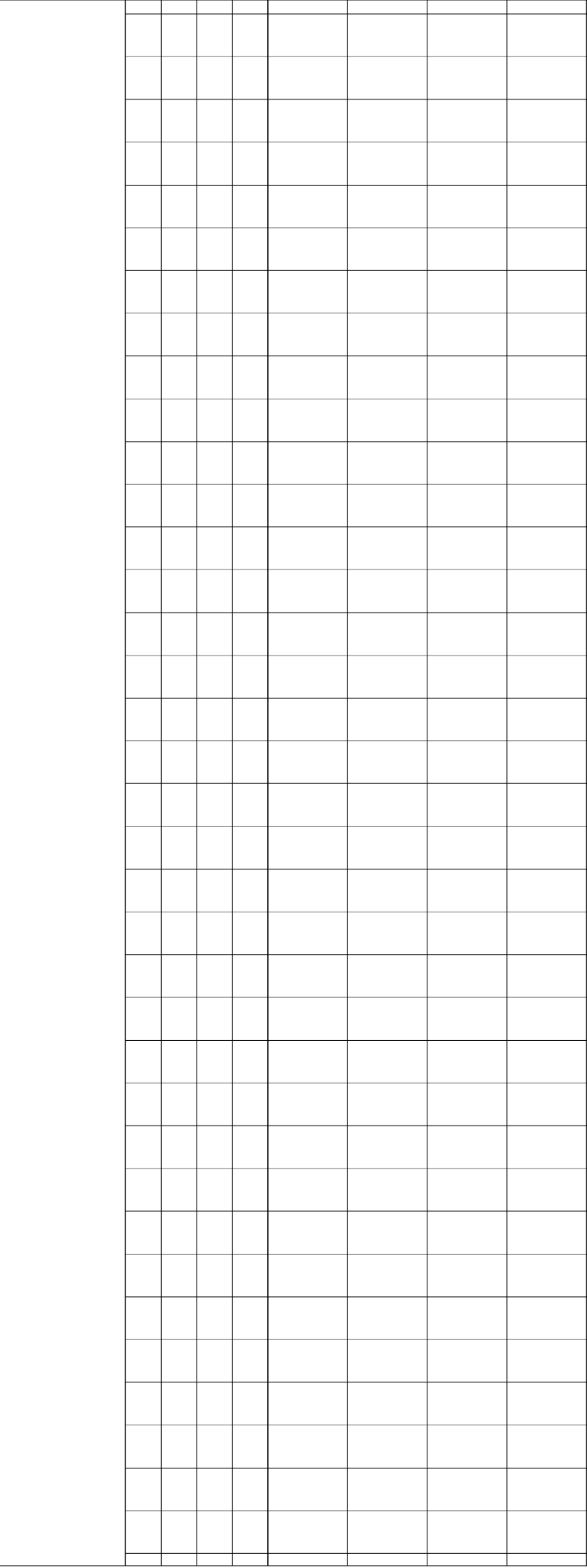
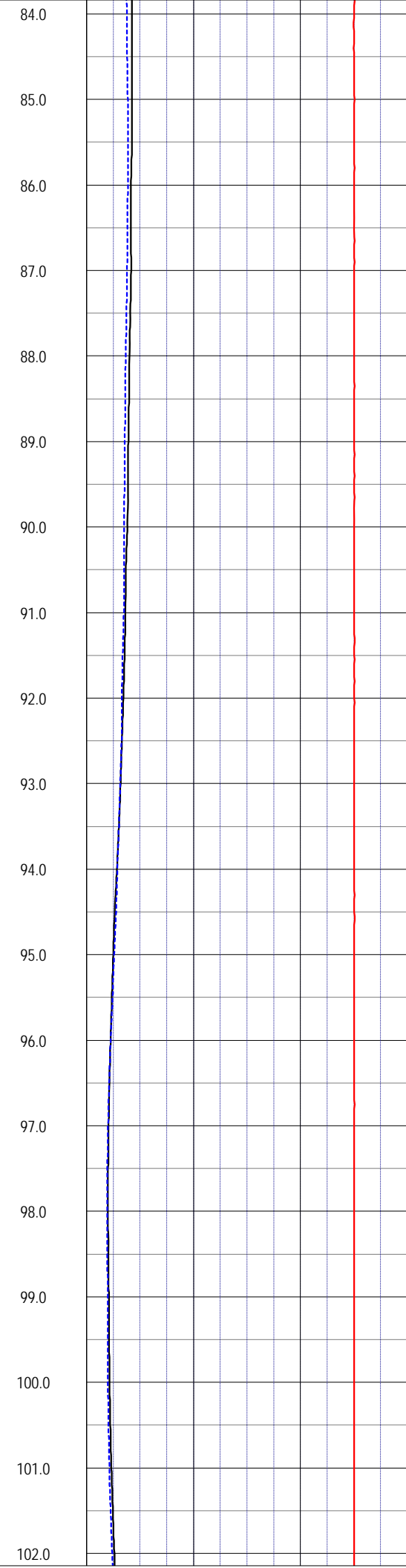
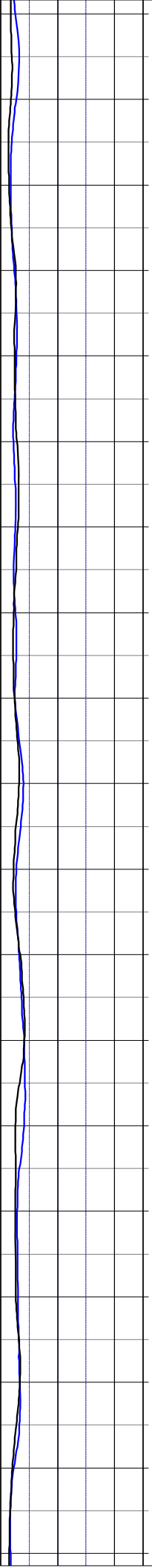
42.35  
CENTRALIZ.

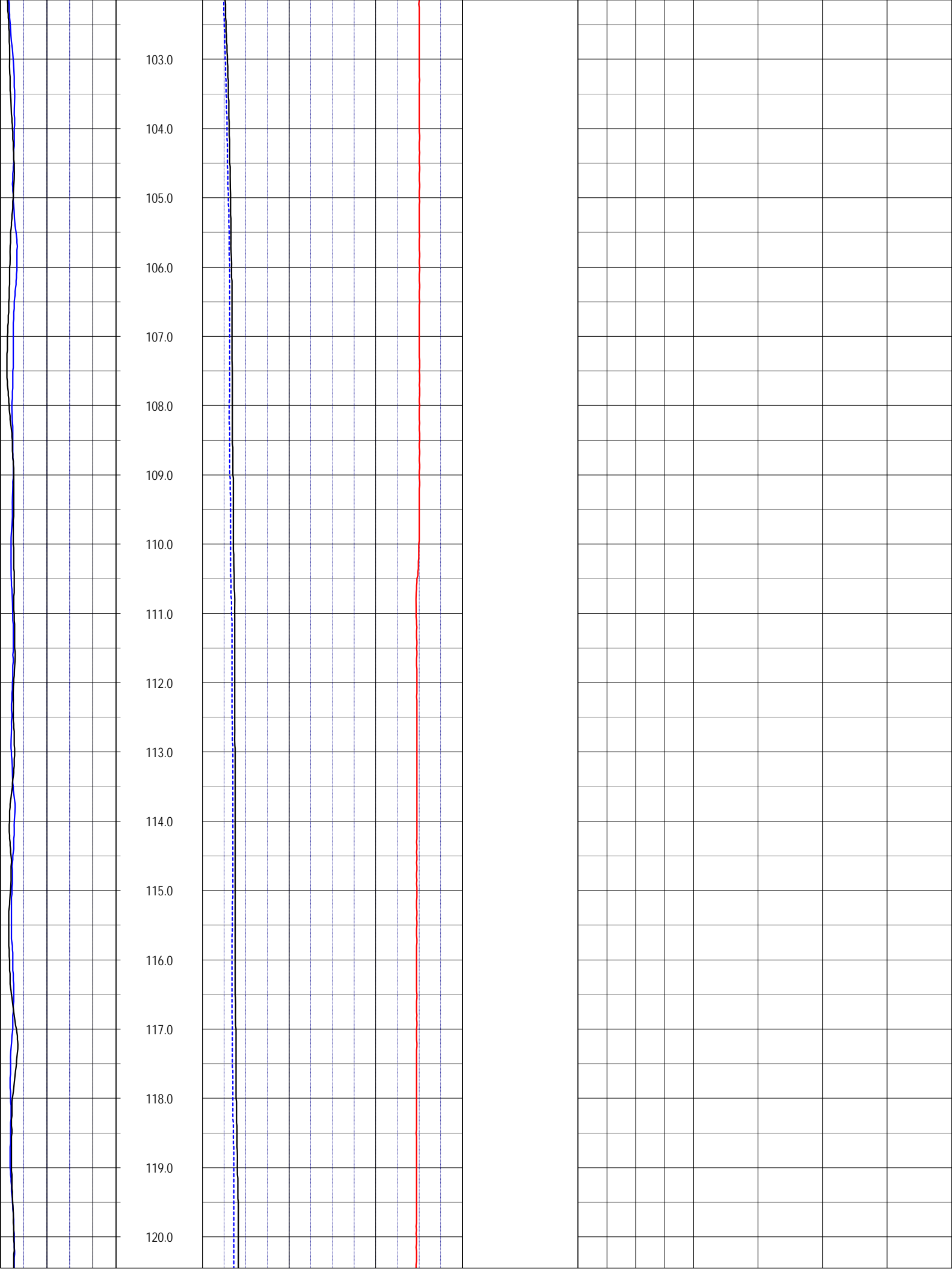
48.0  
49.0  
50.0  
51.0  
52.0  
53.0  
54.0  
55.0  
56.0  
57.0  
58.0  
59.0  
60.0  
61.0  
62.0  
63.0  
64.0  
65.0



66.0  
67.0  
68.0  
69.0  
70.0  
71.0  
72.0  
73.0  
74.0  
75.0  
76.0  
77.0  
78.0  
79.0  
80.0  
81.0  
82.0  
83.0

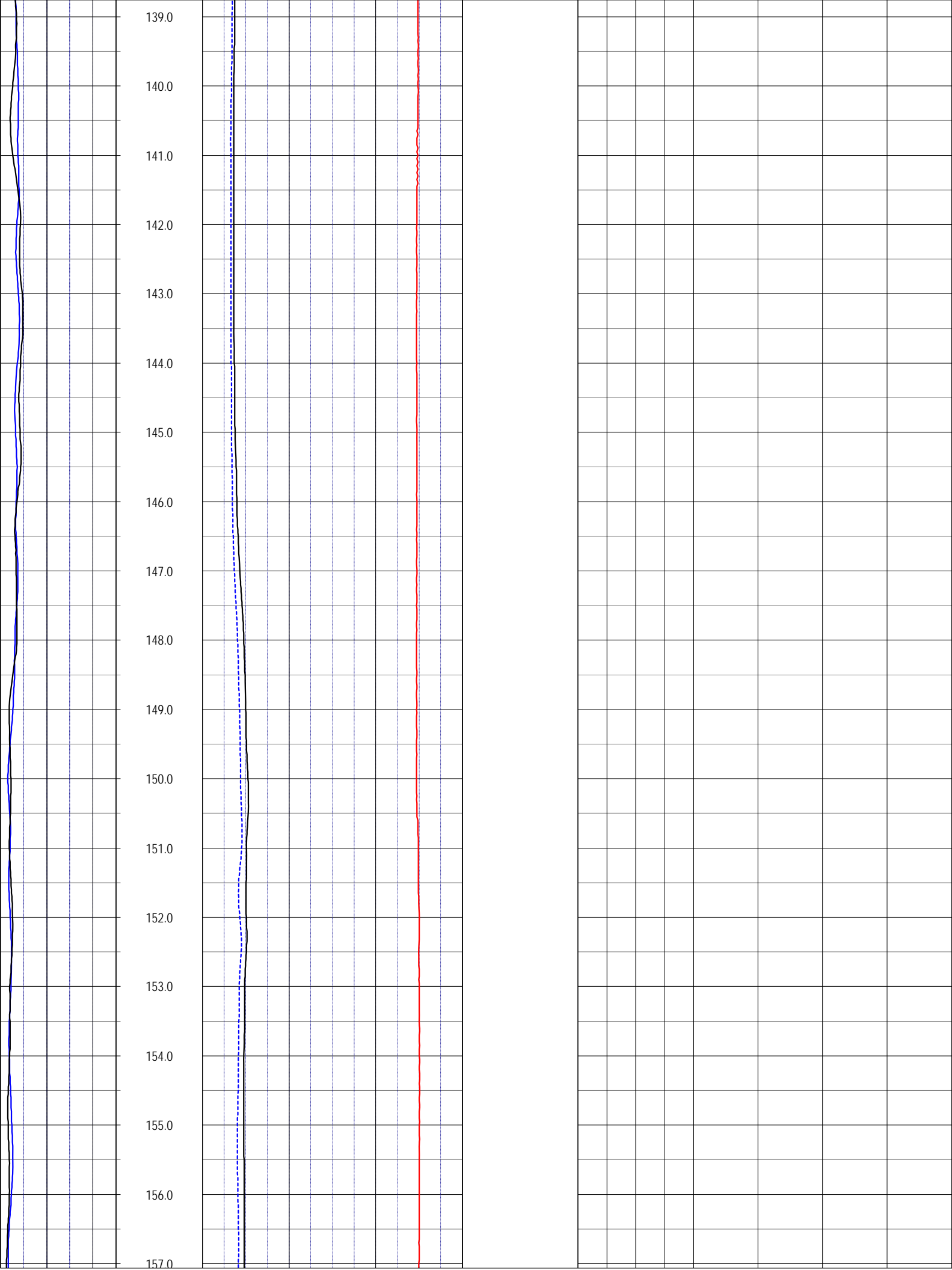


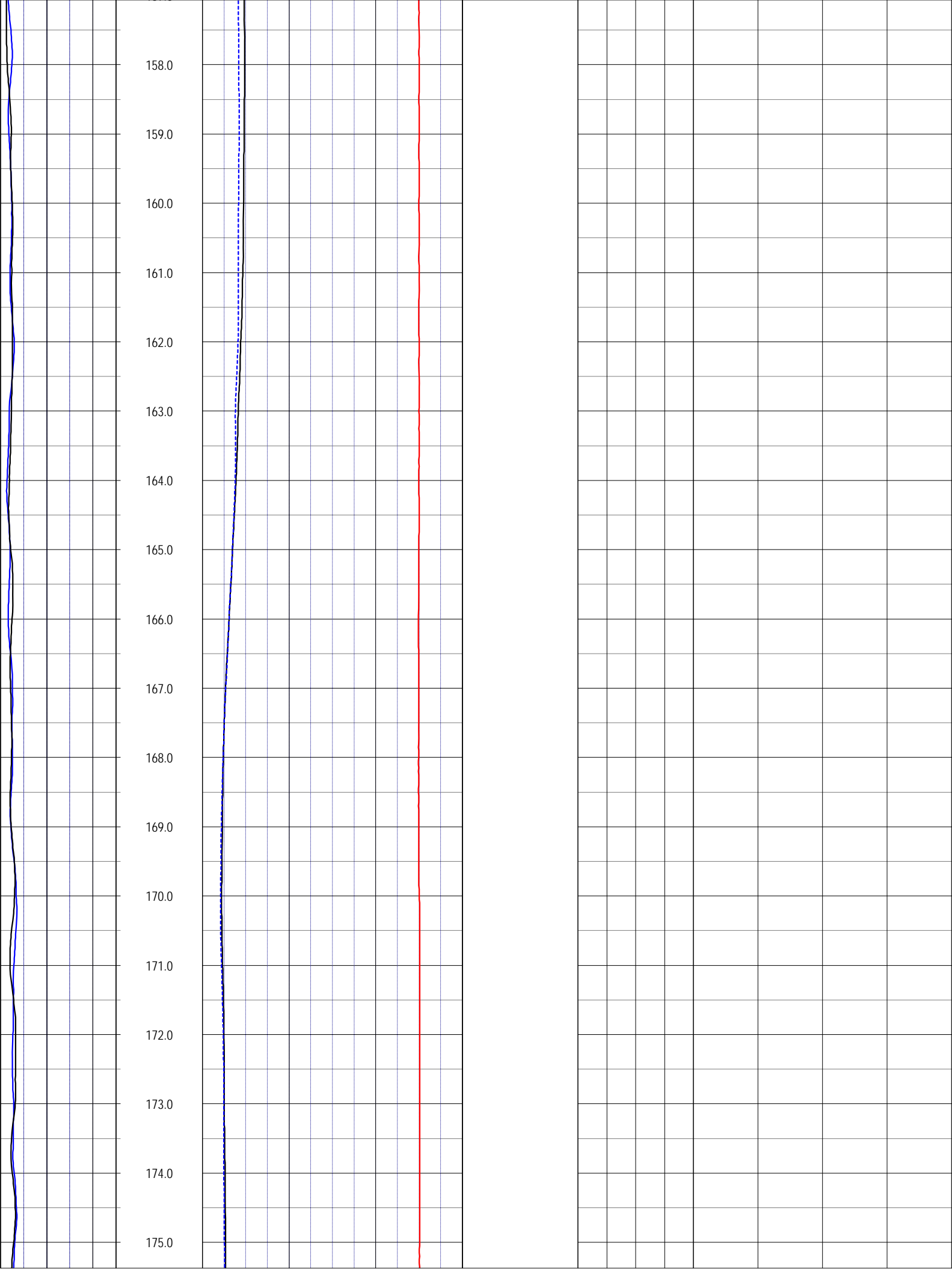


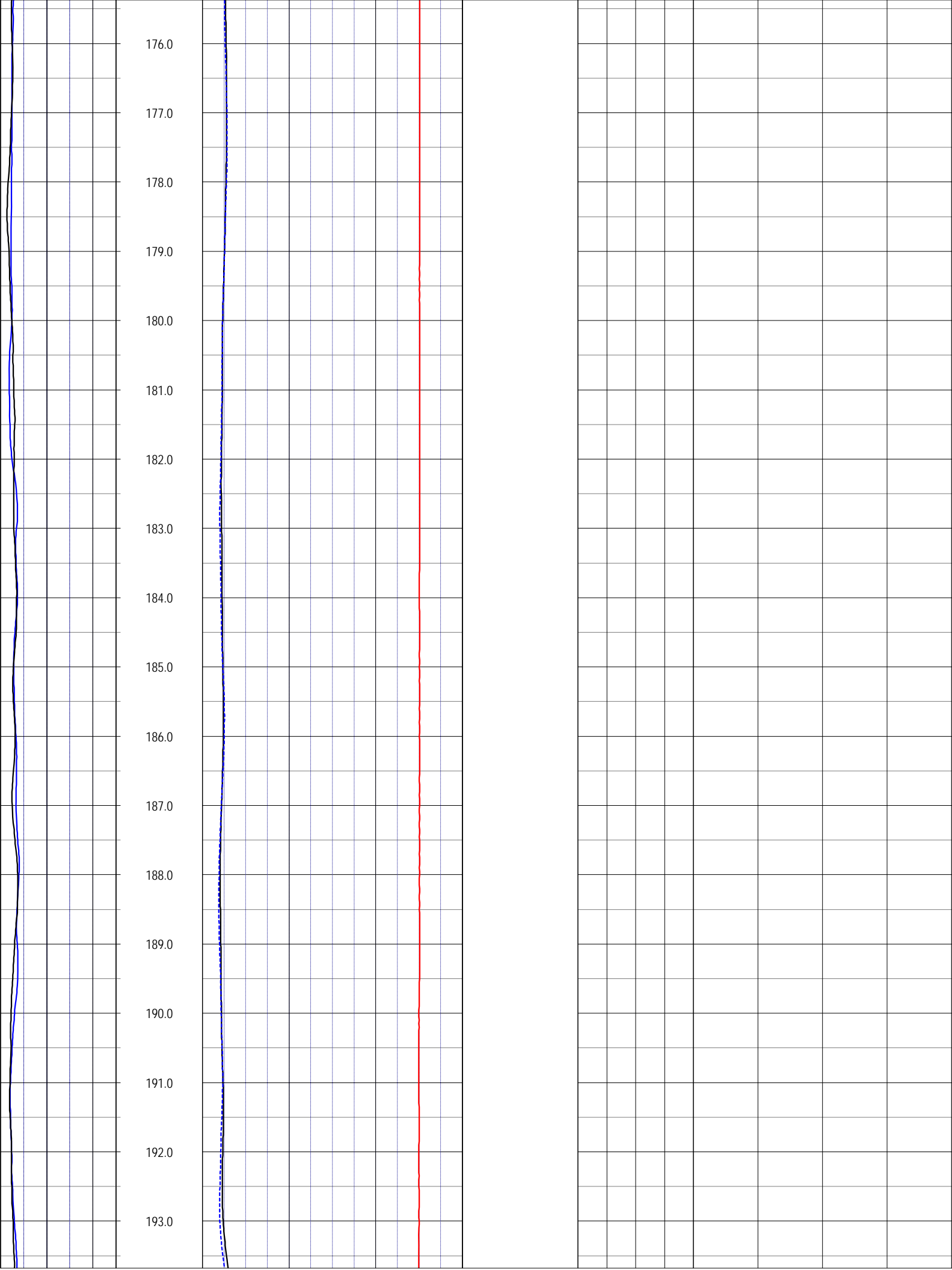


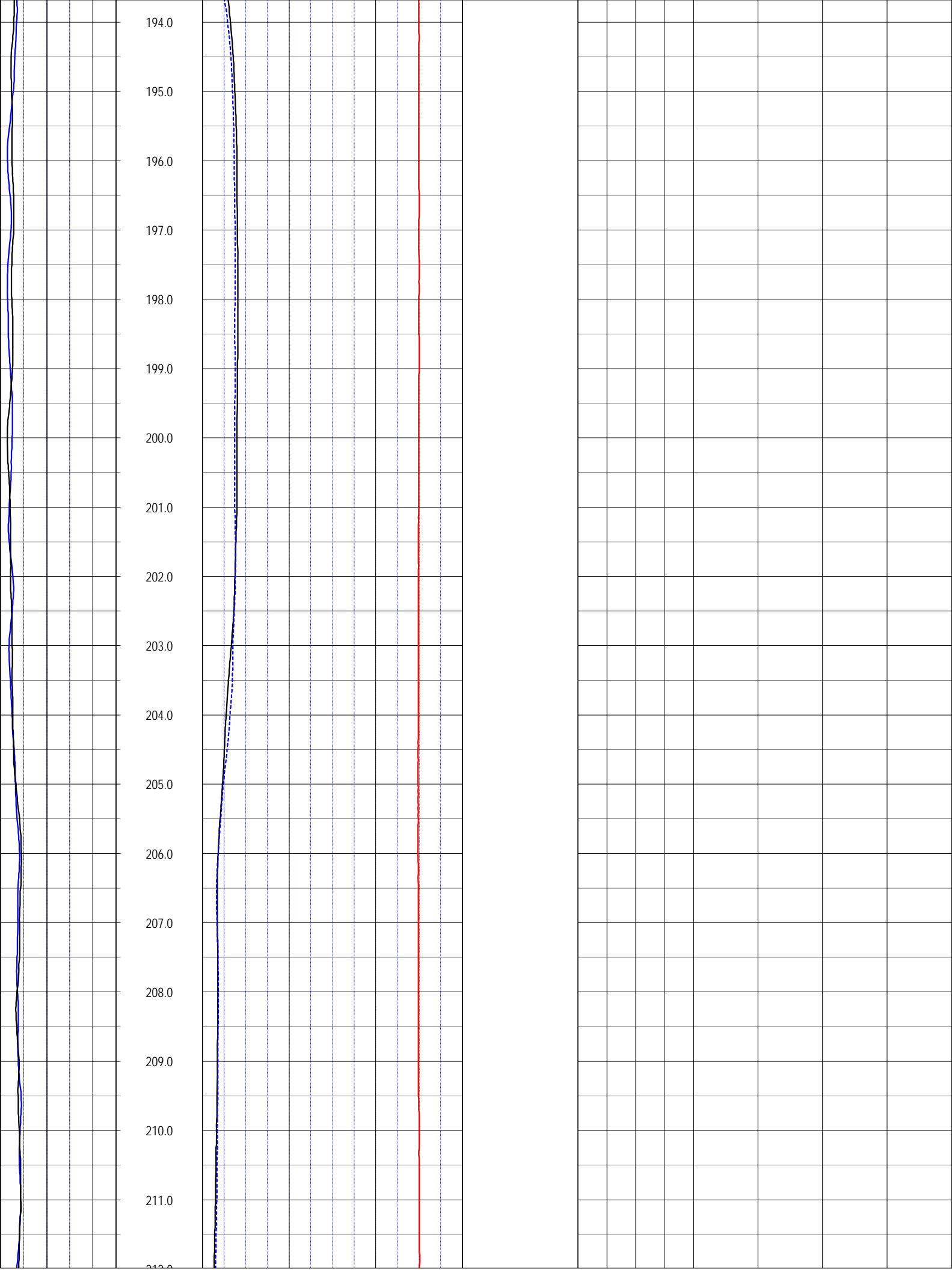


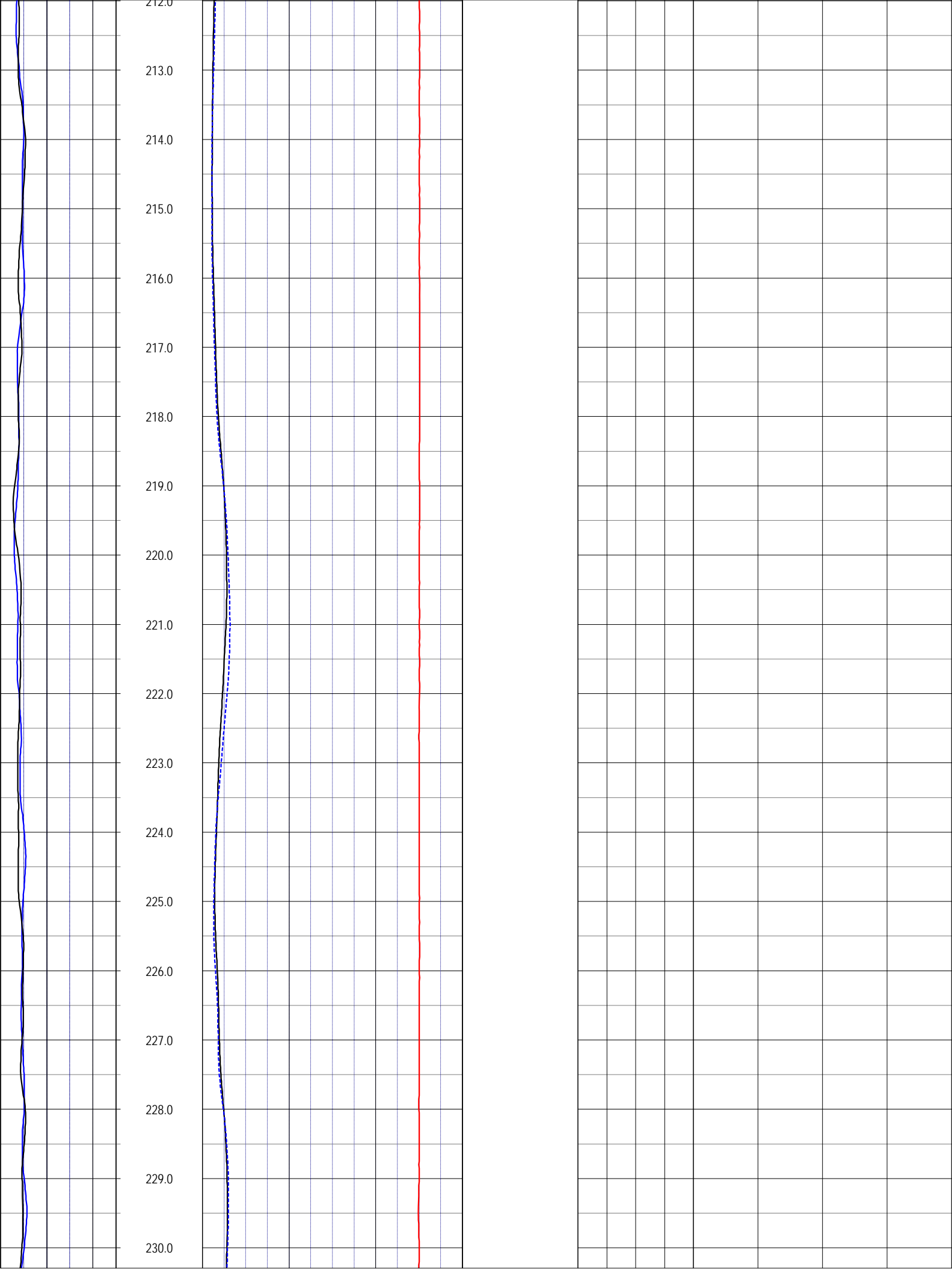


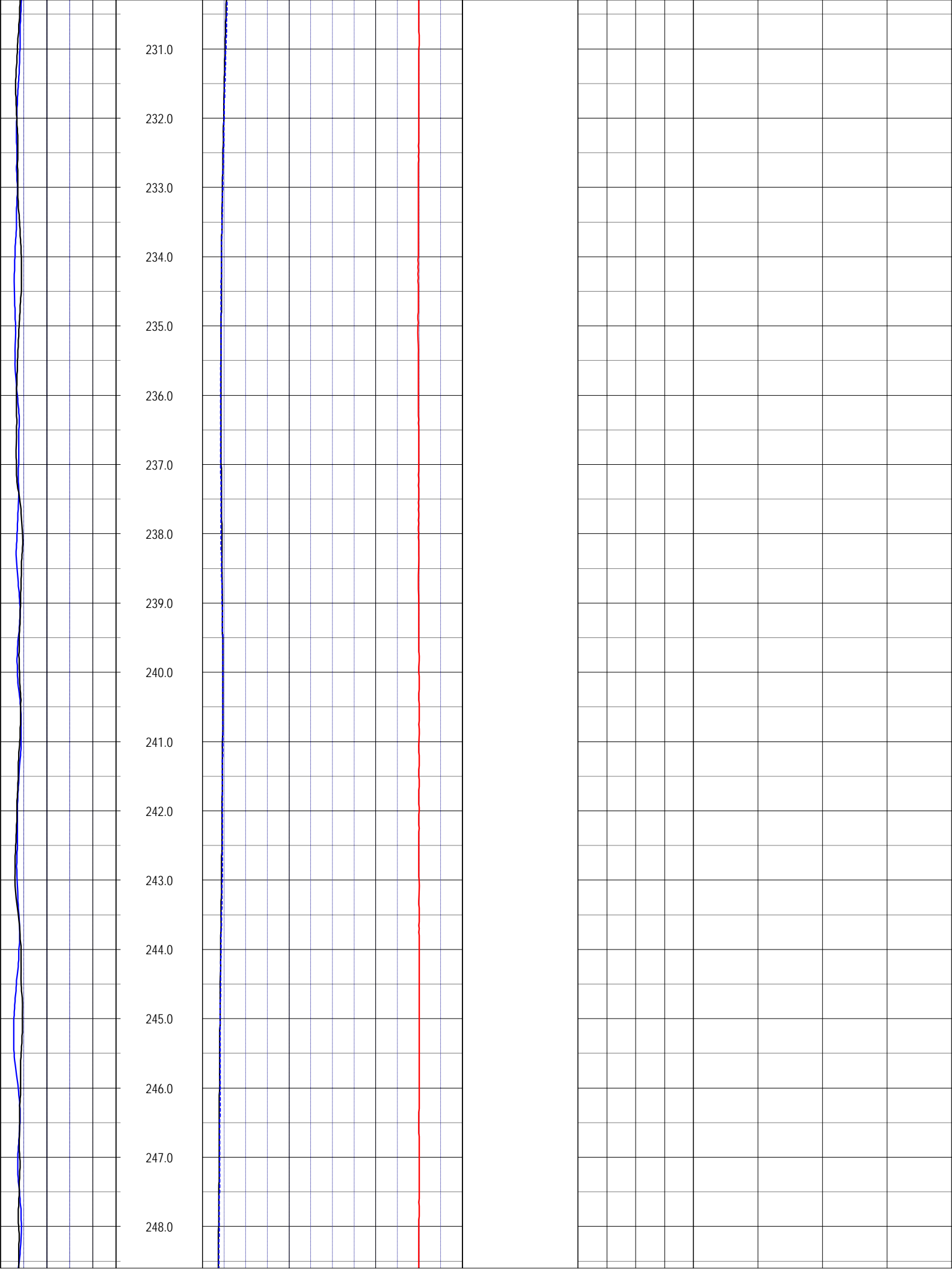


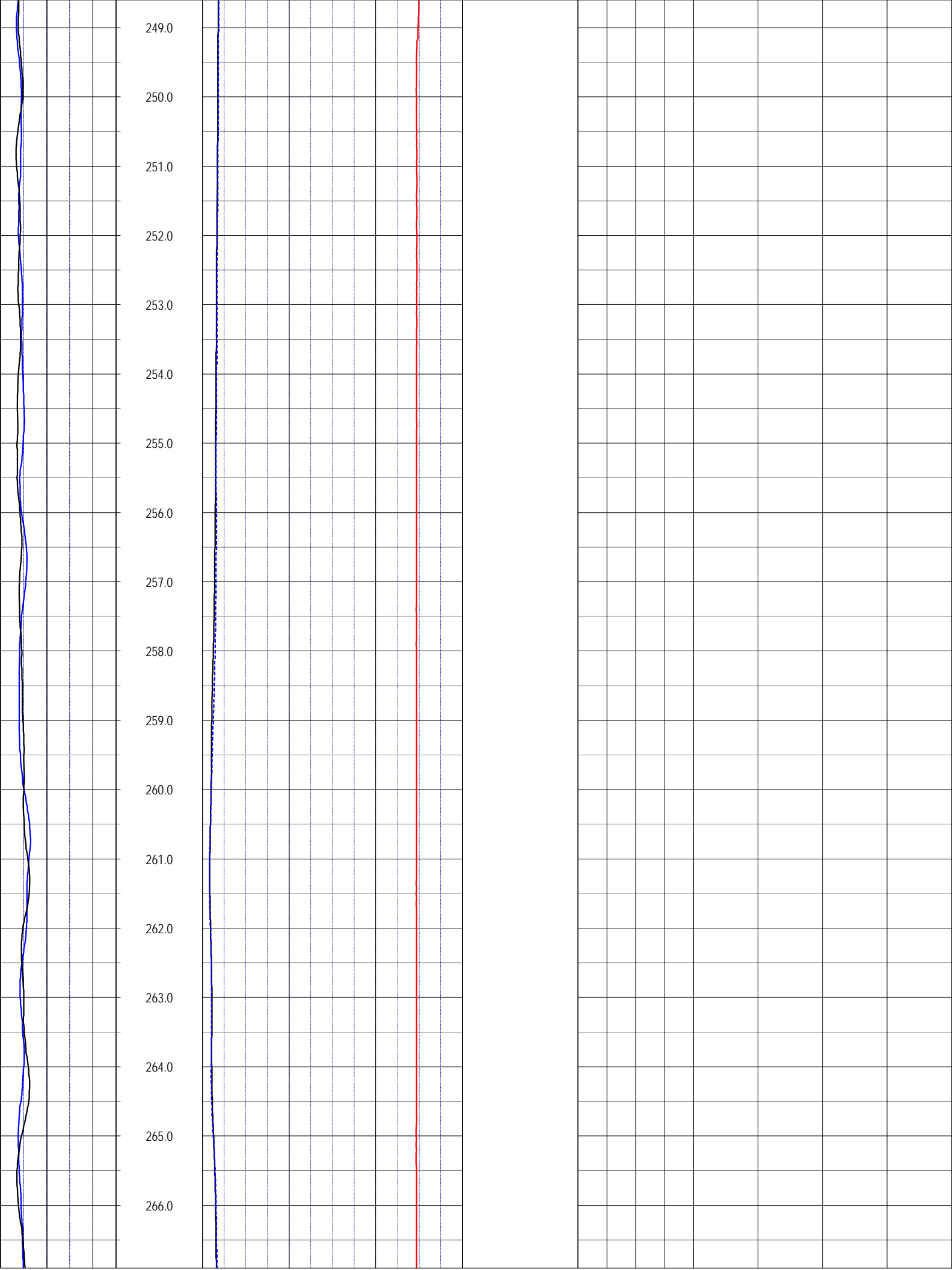


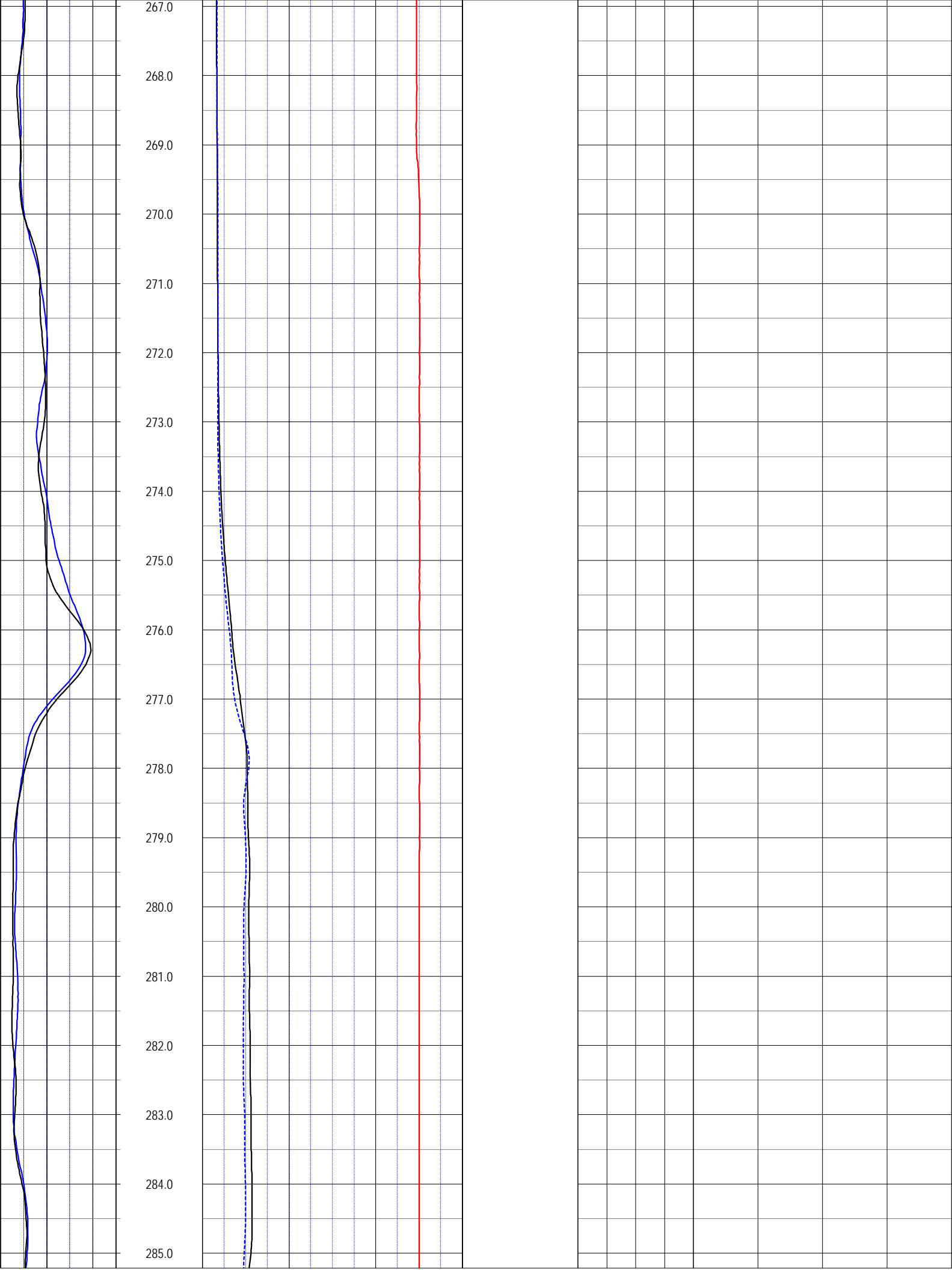








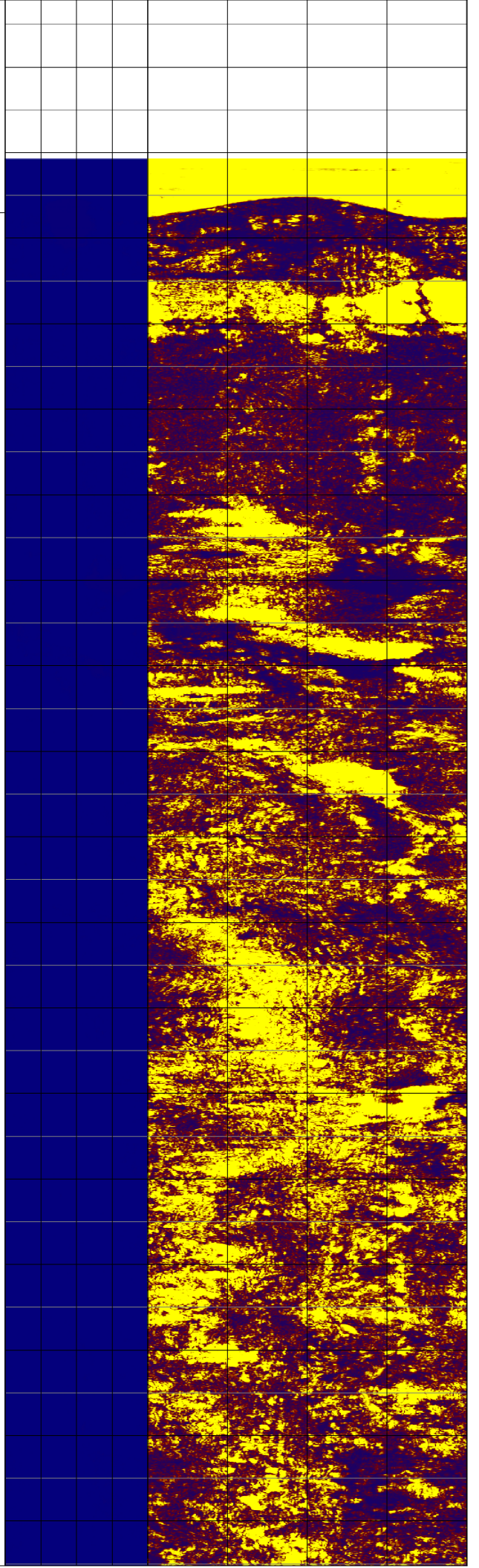


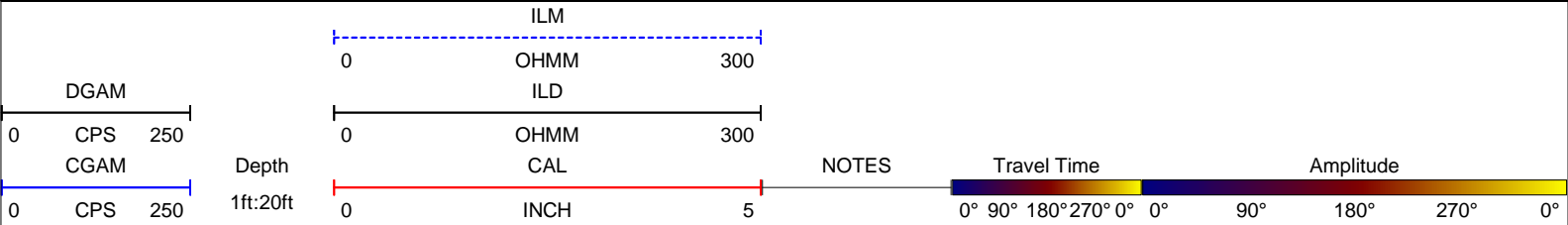
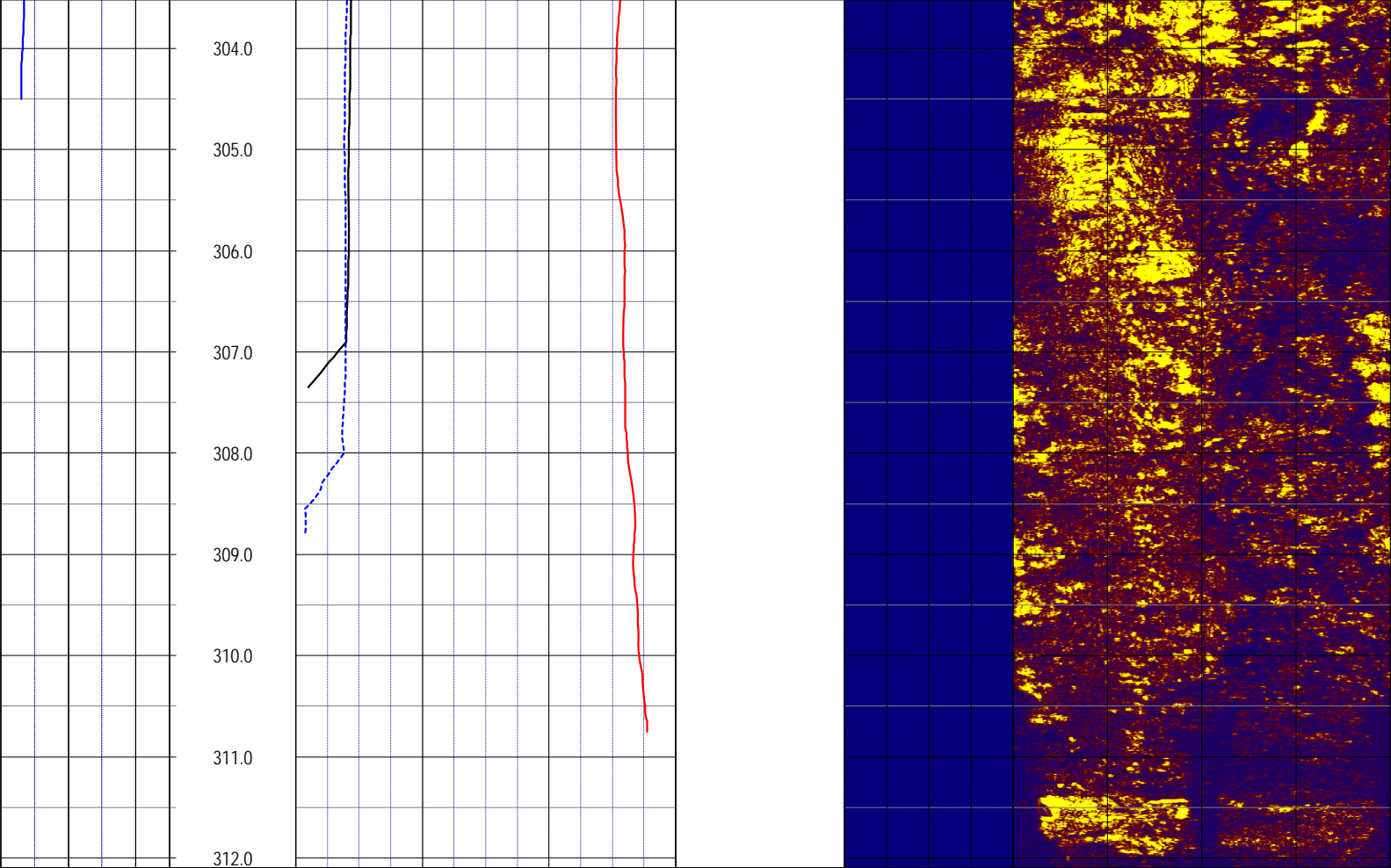






287.70  
CASING BO'





**NOTES:**

While due care has been exercised in the performance of these measurements and observations, in accordance with methodologies utilized by the general practitioner, RMBAKER LLC can make no representations, warranties, or guarantees with respect to latent or concealed conditions that may exist, which may be beyond the detection capabilities of the methodologies used, or that may extend beyond the areas and depths surveyed. The geophysical well logs show subsurface conditions as they existed at the dates and locations shown, and it is not warranted that they are representative of subsurface conditions at other locations and times. If, at any time, different subsurface conditions from those observed are determined to be present, we must be advised and allowed to review and revise our observations if necessary.

Certificate of Authorization GB 458

**END OF LOG**