

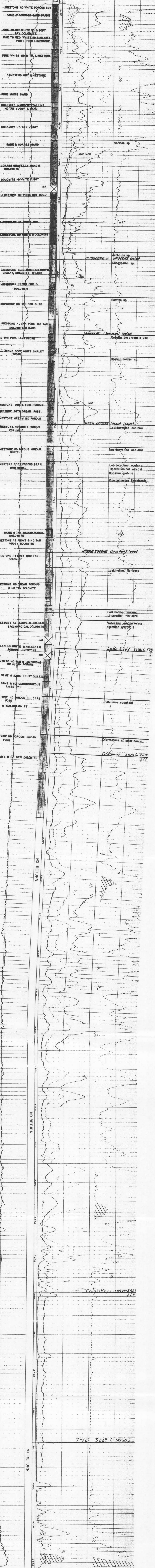
021-105

WATER LOG

Office: **J. L. POWDER**
 Well Number: **WEL. 1790-175**
 Location: **LAKE CITY, FLORIDA**
 State: **FLORIDA**
 Filing No.: **1790-175**

Company: **EMERSON OIL AND**
REFINING COMPANY
 Location: **LAKE CITY, FLORIDA**
 State: **FLORIDA**
 Filing No.: **1790-175**

Well Name: **WEL. 1790-175**
 Well Depth: **4200**
 Casing Depth: **4200**
 Mud Weight: **11.2**
 Mud Volume: **102.3**
 Mud Loss: **0.0**
 Mud Gain: **0.0**
 Mud Balance: **102.3**
 Mud Density: **1.023**
 Mud Temperature: **71**
 Mud Specific Gravity: **1.023**
 Mud Viscosity: **17.1**
 Mud Filtrate: **17.1**
 Mud Solids: **0.1**
 Mud Ash: **0.1**
 Mud Sand: **0.1**
 Mud Silt: **0.1**
 Mud Clay: **0.1**
 Mud Water: **0.1**
 Mud Gas: **0.1**
 Mud Solids: **0.1**
 Mud Ash: **0.1**
 Mud Sand: **0.1**
 Mud Silt: **0.1**
 Mud Clay: **0.1**
 Mud Water: **0.1**
 Mud Gas: **0.1**



2

W. L. POWDER
 J. L. POWDER
 W. L. POWDER
 J. L. POWDER
 W. L. POWDER
 J. L. POWDER