

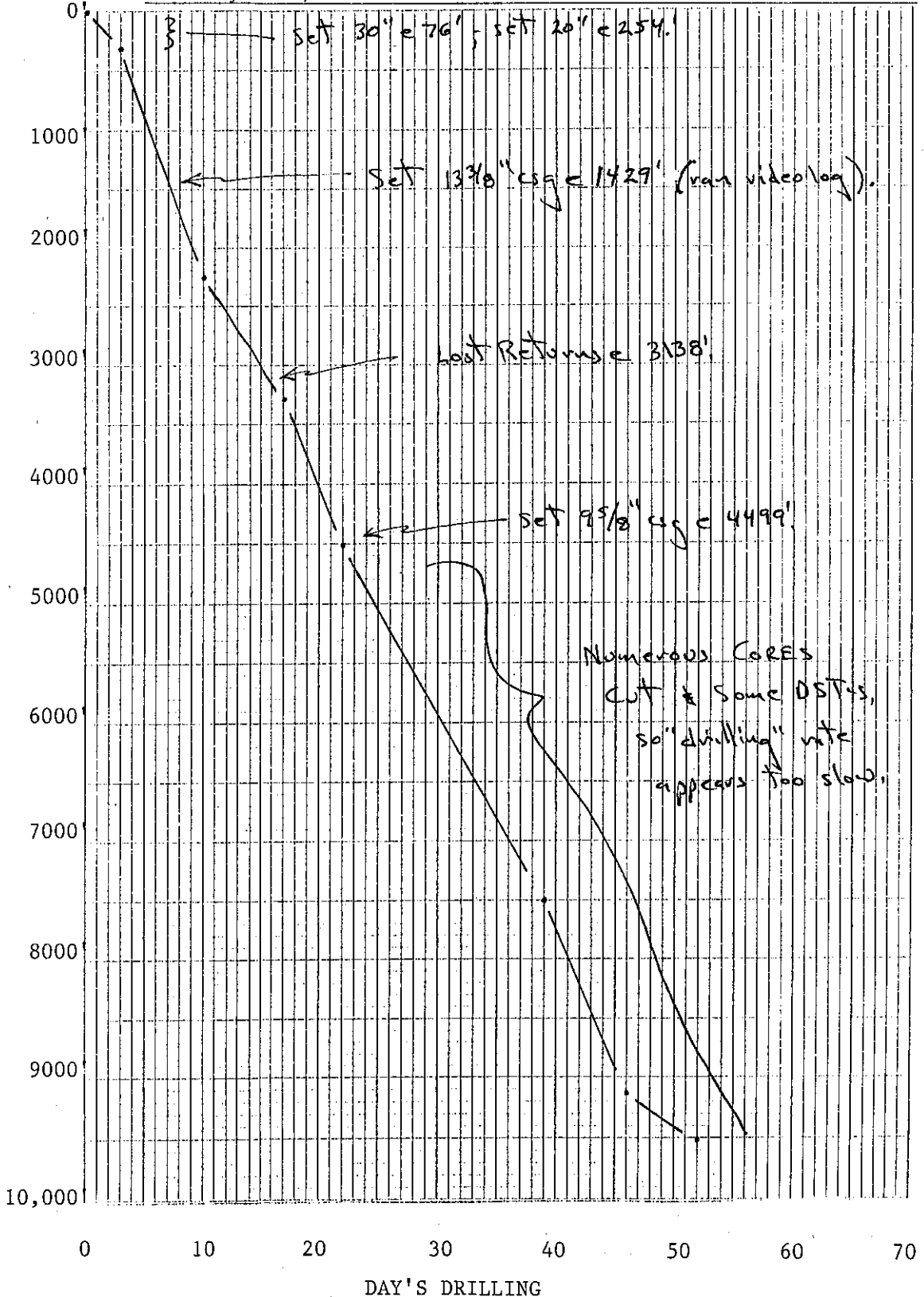
Well No. 222 [W-3579] Elevation G.L. 28' D.F. 45' K.B.

Location 650' FWL, 1650' FNL County Collier

_____ † _____ † _____ † Sec. 8 T 47S R 29E TD 11,937'

Well or Owner's Name Humble #1 J. A. Curry

Data Source Fort Myers O/G Well Files



W-3579, Immokalee Quad
222, Humble #1 J. A. Curry Oil Company
1650'S & 1650'E of NW
Sec. 8, T47S R29E, Collier County
DF 45', GL 28', TD 11,937', Spud 2/3/55, P&A 7/7/55

Brief Log by R. S. Caughey/C. V. Cook 8/94

- 280- 310 White and v. pale orange, chalky, fos Ls, no phos.
- 310- 340 Largely Qz sand, f-med, subang-subrounded; 25% Ls as above.
- 340- 370 Largely Qz sand grains and granules, ←1% phos grains; some clayey Ls and chalky Ls as before.
- 370- 400 Largely Qz grains and granules, rare pebbles; 30% olive gray, clayey, sandy siltstone.
- 400- 430 Largely phos and Qz grains and granules (phos 20%), some clayey, sandy siltstone and silty, phos Ls.
- 430- 460 White, chalky, sandy Ls, phos 1-2%.
- 460- 490 White and v pale orange, chalky Ls, no to little phos, minor carbonaceous matter, and some Ls is part rexal.
- 490- 520 Mixture of white, chalky, sandy, phos Ls; v p o, chalky Ls; grayish orange f g dol, loose Qz sand and a little clayey siltstone.
- 520- 610 Mostly pale olive clayey silstone and white chalky Ls; some loose Qz sand and phos grains/granules (2-3%).
- 610- 640 As above, but phos ±5% and Ls is partially rexal.
- 640-670 Largely white, chalky Ls, no phos.
- 670- 730 Mixture of white, chalky Ls as above and white, chalky, sandy, phos Ls, phos 1-2%.
- 730- 760 Largely white, sandy, phos Ls, phos 1-3%; some white, chalky Ls; a little lt gray, phos sandstone, trace Dol.
- 760- 790 Largely gray, calc, phos sandstone, some Ls as above.
- 790- 850 Largely v pale orange, rexal, chalky, fos Ls no phos, some sandstone; Ls and dol as above.
- 850- 880 As above; trace of bl phos grns.
- 880- 910 Ls as above, 10% lt gray f g xln Dol, 5% v pale orange sandy f g Ls w/1% bl and brn phos grs, and 10% bl and brn phos pebbles.
- 910- 940 V pale orange, f g subang, calc Ss, 10% colorless subrnd Qz pebbles and 5% Dol as above.
- 940- 970 Ss as above and v pale orange chalky fos Ls, 5% Qz pebbles as above and a trace of bl phos pebbles.

W-3579, Immokalee Quad
222, Humble #1 J. A. Curry Oil Company
Sec. 8, T47S R29E, Collier County (con't)

- 970-1000 Yellowish gray part recrystallized fos Ls, 10% sandy Ls as above w/1% bl phos grs, a trace of bl phos pebble and Qz pebbles as above.
- 1000-1030 As above; 20% Ls w/grayish orange med xln Dol.
- 1030-1090 V pale orange to lt gray part recrystallized f g Ls, 10% w/sand and 1% bl phos grs, a trace of colorless coarse subrnd Qz grs, and a trace of dusky yellow green Dolosilt.
- 1090-1120 Ls as above and 10% lt gray f g sandy part recrystallized Ls w/1-2% bl and brn grs.
- 1120-1180 V pale orange chalky fos part recrystallized Ls w/common Lepidocyclina.
- 1180-1220 Chalky Ls as above w/abundant Camerina and common Lepidocyclina.
- 1220-1250 Missing
- 1250-1280 As above
- 1280-1340 As above w/abundant Lepidocyclina and Camerina.
- 1340-1370 Ls as above w/abundant Camerina, minor Lepidocyclina and 30% grayish orange med xln Dol.
- 1370-1400 Ls as above w/a trace of Camerina, 10% xln Dol as above, 5% colorless subang Qz pebbles and 5% greenish gray sandy Dolosilt.
- 1400-1424 Missing
- 1424-1480 Chalky Ls as above, a trace of Dictyoconus, 10% Ls w/med xln Dol rhombs, and 10% Ls w/carbonaceous material.
- 1480-1540 Chalky Ls as above; 5% Ls w/carbonaceous material; a trace of Dictyoconus.
- 1540-1550 Chalky Ls as above w/common Dictyoconus, 5% lt gray to pink, slightly calc clay (?).
- 1550-1560 V pale orange granular part recrystallized fos Ls; minor Dictyoconus.
- 1560-1590 As above; Dictyoconus common.
- 1590-1600 Ls as above; minor Ls w/carbonaceous material.
- 1600-1620 As above w/5% Ls w/carb material.
- 1620-1630 Ls as above; 5% lt gray calc clay (?) w/black specks.
- 1630-1650 V pale orange, granular, part dolomitized Ls; 10% lt gray clay (?) as above and a trace of Ls w/carbonaceous material.
- 1650-1670 Ls as above and 5% med gray, f g, part dol Ls.

W-3579, Immokalee Quad
222, Humble #1 J. A. Curry Oil Company
Sec. 8, T47S R29E, Collier County (con't)

- 1670-1690 Grayish orange, granular, f g, part dolomitized Ls, 5% lt gray, f g, part dol Ls, and 5% lt gray clay (?).
- 1690-1710 Ls as above, 5% Ls w/carb material and 5% v lt to lt gray f g part dol Ls.
- 1710-1720 As above w/10% f g dol Ls.
- 1720-1730 Granular Ls as above w/a trace of Dictyoconus americanus and 15% lt gray to grayish orange f g Ls as above.
- 1730-1750 As above w/5% f g Ls and 10% lt gray calc clay (?) as above.
- 1750-1760 Granular Ls as above w/a trace of D. americanus and 5% lt gray calc clay (?).
- 1760-1770 V pale orange granular part dol Ls w/minor Dictyoconus americanus and a trace of Ls w/carbonaceous material.
- 1770-1790 As above w/a trace of lt gray calc clay (?).
- 1790-1800 V pale orange chalky granular Ls w/minor Dictyoconus americanus.
- 1800-1810 V pale orange granular part dol Ls w/common Dictyoconus americanus.
- 1810-1820 As above w/a trace of D. americanus.
- 1820-1860 As above w/a trace of Ls w/carbonaceous material.
- 1860-1920 V pale orange to grayish orange Ls as above, trace of D. americanus, trace of Ls w/carbonaceous material and a trace of lt gray calc clay (?).
- 1920-1930 As above w/5% Ls w/carb material.
- 1930-1940 As above w/no lt gray clay.
- 1940-1970 V pale orange chalky part dol Ls and 20% mod yel/brn f g Dol.
- 1970-1990 Granular Ls as above w/common Dictyoconus americanus, 35% mod yel/brn med xln Dol and 30% Ls w/med xln Dol rhombs in matrix.
- 1990-2000 As above w/45% Dol.
- 2000-2020 90% white, chalky Ls, trace carbonaceous matter; 10% v pale orange, granular Ls.
- 2020-2030 95% white, chalky Ls, a little v p o Ls as above, some Ls is partially rexl and some w/Dol rhombs floating in matrix; a few larger, flattened cones; <5% brown, Dol as aggregates of rhombs.
- 2030-2040 60% Ls as above; 40% Dol lt to mod brown, med to coarse xalline.
- 2040-2050 80% v pale orange, chalky and granular Ls; 20% Dol as above.
- 2050-2060 50/50 Ls and Dol as above.

W-3579, Immokalee Quad
222, Humble #1 J. A. Curry Oil Company
Sec. 8, T47S R29E, Collier County (con't)

- 2060-2070 80% Dol as above; 20% Ls as above.
- 2070-2090 50% white, chalky Ls, some w/Dol rhombs in matrix; 50% Dol as above and as lt brn aggregates of rhombs.
- 2090-2100 80% white, chalky, silty and sl carbonaceous Ls w/minor dolomite; 20% milky, white gypsum.
- 2100-2110 50% milky, white, sucrosic gypsum; 50% coarse xalline, v p orange, selenite.
- 2110-2120 60% v p orange, selenite; 10% milky, white gypsum; 30% white, chalky, rexal Ls.
- 2120-2130 Mixture of selenite and chalky Ls.
- 2130-2140 Mixture of selenite, gypsum and chalky Ls.
- 2140-2170 Largely milky, white, sucrosic to xalline gypsum.
- 2170-2190 Equal mixture of gypsum; white, chalky Ls w/some Dol rhombs in matrix and aggregates of Dol rhombs.
- 2190-2200 Largely gypsum as above.
- 2200-2210 70% gypsum; 30% mixture of chalky Ls and Dol aggregates of rhombs.
- 2210-2230 Largely chalky, Ls, a few cones; some Dol rhomb aggregates, some gypsum.
- 2230-2240 As above w/<5% dark yellowish brn med xln Dol.
- 2240-2250 As above w/40% Ls; 30% gypsum and 30% Dol.
- 2250-2270 As above w/60% Dol; 30% Ls and 10% gypsum.
- 2270-2280 V pale orange med grain pelletal Ls, a trace of cones, 10% Dol as above, and 5% gypsum.
- 2280-2290 30% chalky v pale orange Ls, 60% grayish orange to dark yel/brn med xln Dol and 15% gypsum.
- 2290-2310 As above w/80% Dol, 15% gypsum and 5% Ls.
- 2310-2330 As above w/60% Dol, 20% Ls and 20% gypsum.
- 2330-2340 V pale orange pelletal Ls, Ls w/Dol rhombs in matrix, 10% grayish orange coarse xln Dol and 5% wh gypsum.
- 2340-2350 Chalky pelletal Ls as above, a trace w/carbonaceous material, 5% wh gypsum and a trace of Dol as above.
- 2350-2360 Mod yel/brn fine xln Dol, 20% v pale orange chalky Ls and 10% wh gypsum.
- 2360-2410 As above w/5% Ls and 5% wh gypsum.
- 2410-2430 As above w/20% Ls and 5% wh gypsum.

W-3579, Immokalee Quad
222, Humble #1 J. A. Curry Oil Company
Sec. 8, T47S R29E, Collier County (con't)

- 2430-2440 As above w/70% Ls, 20% Dol, 10% wh gypsum and a trace of cones.
- 2440-2460 As above w/60% Ls, 30% Dol and 10% wh gypsum.
- 2460-2470 75% grayish orange to med gray fine xln Dol, 20% v pale orange Ls w/common Dictyoconus americanus, and 5% wh chalky gypsum.
- 2470-2480 As above w/80% Dol, 10% Ls, 5% wh gypsum and 5% selenite.
- 2480-2490 As above w/85% Dol, 10% gypsum and 5% Ls.
- 2490-2500 As above w/80% Dol, 10% Ls, 5% wh gypsum and 5% selenite.
- 2500-2510 As above w/50% Dol, 45% Ls and 5% wh gypsum.
- 2510-2520 As above w/70% Dol and 30% Ls; trace of cones.
- 2520-2530 As above/w 60% Dol and 40% Ls.
- 2530-2540 As above w/80% Dol, 10% Ls and 10% wh gypsum.
- 2540-2570 Grayish orange fine xln Dol and 10% wh gypsum.
- 2570-2580 As above w/10% Ls and 5% gypsum.
- 2580-2600 As above w/60% Dol, 20% Ls, 15% wh gypsum and 5% bl carbonaceous material.
- 2600-2610 As above w/40% Dol, 30% Ls, 25% black carbonaceous siltstone and 5% wh gypsum.
- 2610-2620 V pale orange pelletal chalky Ls, 10% Dol as above and 10% bl carb siltstone.
- 2620-2660 V pale orange Ls w/dol rhombs in matrix and 10% bl carb siltstone.
- 2660-2670 60% grayish orange fine xln Dol, 30% Ls as above and 10% bl carb siltstone.
- 2670-2680 As above w/70% Dol, 20% Ls and 10% siltstone.
- 2680-2690 As above w/60% Dol, 35% Ls and 5% Sltst w/a trace of Dictyoconus americanus.
- 2690-2700 V pale orange granular Ls, 30% v pale orange fine xln Dol, 5% pale yel/brn fine xln Dol, 5% wh gypsum and 10% bl carbonaceous siltstone.
- 2700-2710 V pale orange Dol as above and 10% carb Sltst as above.
- 2710-2720 As above w/a trace of wh gypsum.
- 2720-2750 V pale orange chalky Ls; 20% Dol as above and 20% bl Sltst as above.
- 2750-2760 As above w/30% Sltst and 15% Dol.
- 2760-2770 As above w/10% Sltst and 5% Dol.
- 2770-2780 As above w/20% Dol and 10% Sltst.

W-3579, Immokalee Quad
 222, Humble #1 J. A. Curry Oil Company
 Sec. 8, T47S R29E, Collier County (con't)

- 2780-2790 50% Ls as above, 45% Dol, and 5% Sltst, Dictyoconus americanus.
- 2790-2800 75% Ls as above, 20% Dol and 5% Sltst.
- 2800-2810 Ls as above and 20% Dol as above.
- 2810-2820 80% Ls as above, 15% Dol and 5% Sltst.
- 2820-2830 55% Ls as above, 10% Dol and 5% Sltst.
- 2830-2860 V pale orange chalky Ls w/some Dol rhombs in matrix, 5% mod yel/brn fine xln dol and a trace of wh gypsum.
- 2860-2870 As above w/20% Dol.
- 2870-2900 As above w/10% Dol.
- 2900-2920 As above w/5% Dol.
- 2920-2930 As above w/10% Dol.
- 2930-2940 As above w/20% Dol.
- 2940-2950 V p o chalky, silty, micritic to granular part dolomitized Ls; some w/Dol rhombs in matrix and 5% grayish orange f g xln Dol.
- 2950-2960 Ls and 10% Dol as above; a tr of bl carb matter.
- 2960-2980 Granular Ls as above; 10% Dol as above.
- 2980-2990 Ls as above; 10% grayish orange-dk yel/brn f g xln Dol.
- 2990-3000 Granular Ls as above, some micritic, some w/Dol rhombs in matrix; 5% xln Dol as above.
- 3000-3010 V chalky, silty Ls and Dol as above.
- 3010-3030 Samples missing
- 3030-3040 V p o chalky, granular to micritic, part dolomitized Ls; 5% xln Dol as above.
- 3040-3050 V p o granular, part dolomitic Ls, some micritic; 10% xln Dol, some as aggregates of f g-med xln rhombs.
- 3050-3060 V p o granular part dol Ls w/aggregates of med xln Dol rhombs in matrix.
- 3060-3070 Ls as above, some w/o Dol rhombs in matrix; one Coskinolina elongata (?).
- 3070-3080 V p o granular, part dol Ls; some w/Dol rhombs in matrix; 3% pale yel/orange med xln Dol aggregates of rhombs.
- 3080-3090 80% Ls and 20% Dol rhombs as above.

W-3579, Immokalee Quad
222 Humble #1 J. A. Curry Oil Company
Sec. 8, T47S R29E, Collier County (con't)

3090-3100 90% grayish orange med xln Dol aggregates of rhombs; 5% Ls as above.

3100-3120 Dol as above and < 5% Ls as above.

36725

HW No. 1030

SCHLUMBERGER WELL SURVEYING CORPORATION
HOUSTON, TEXAS
Electrical Log

COUNTY COLLIER 36725
FIELD or WILDCAT
LOCATION SEC-8-47S-29E
WELL J. A. CURRY #1
COMPANY HUMBLE OIL & REFG. CO.

COMPANY HUMBLE OIL & REFINING
WELL J. A. CURRY #1
FIELD WILDCAT
LOCATION SEC-8-47S-29E
COUNTY COLLIER
STATE FLORIDA

Location of Well
1650' S & 1650' E
OF NW/COR SEC.
(ES-ML-LL)
Permit # 222
Elevation: D.F., 45'
K.B.:
or G.L.:

FILING No. _____

W-3579, Immokalee Quad
222 Humble #1 J. A. Curry Oil Co.
1650' S & 1650' E of NW, Sec. 8
T47S R29E, Collier County
(Immokalee Quad)
GL 28', DF 43' - TD 11,937'
Spud 2/3/55 - P & A 7/7/55

Brief Log by R. S. Caughey and
C. V. Cook 8/94

- 280- 310 - Wh-v p o, chalky, fos Ls, no phos.
- 310- 340 - Qz sand and 25% Ls as above.
- 340- 400 - Qz sand, clayey Ls, sandy Siltst at 370'.
- 400- 430 - Qz sand, 20% phos, Siltst and phos Ls.
- 430- 490 - Wh-v p o, chalky Ls, 1-2% phos, minor carb matter at 460'.
- 490- 640 - Wh, chalky Ls, clayey Siltst, Qz sand and 1-5% phos.
- 640- 730 - Wh, chalky Ls and wh, sandy, phos (1-2%) Ls at 670'.
- 730- 790 - Wh, sandy, fos Ls-phos Ss.
- 790- 910 - V p o, rexal, chalky, fos Ls, minor Ss and rare Dol; rare phos grs at 850'; 10% Dol and 10% phos 880'.
- 910- 970 - V p o, calc Ss, 5-10% Qz pebbles, minor Dol at 910-940'.
- 970-1030 - Yel/gray fos Ls, 10% v p o, sandy Ls w/1% phos grs; 20% Ls w/gray/orange med xln Dol at 1000'.

RUN No.	ONE	TWO			
Date	3-2-55	6-8-55			
First Reading	4396	11938			
Last Reading	1934	4498			
Feet Measured	2962	7440			
Csg. Schlum.	1434	4498			
Csg. Driller	1434	4499			
Depth Reached	4470	11938			
Bottom Driller	4512	11937			
Depth Datum	ONE FOOT ABOVE ROTARY OR 15' ABOVE BROWDENHEAD				
Mud Nat.	SALT WATER-GEL-CAUSTIC-WEB *				
Density	-	9.3			
Viscosity	-	39			
Resist.	20 @ 80 °F	0.8 @ 93 °F	@ °F	@ °F	@ °F
Res. BHT	@ °F	0.37 @ 182 °F	@ °F	@ °F	@ °F
pH	@ °F	NA @ °F	@ °F	@ °F	@ °F
Wtr. Loss	CC 30 min.	10' CC 30 min.	CC 30 min.	CC 30 min.	CC 30 min.
Max. Temp. °F	1155 MIN	100' = 182*			
Bit Size	12 1/4"	8 5/8"			
Spchs.—AM	16"	16"			
AO	64"	64"			
AO	18'8"	18'8"			
Opr. Rig Time	5 HRS.	3 HRS.			
Truck No.	1765-L	1755-LAUREL			
Recorded By	ETHERIDGE	CALLAWAY			
Witness By	NEIGHBORS	WESTOVER			

- 1030-1120 - V p o, Ls, 10% sandy Ls, 1-2% phos grs.
- 1120-1220 - V p o Ls, common Lepidocyclina; Camerina at 1180'.
- 1220-1250 - Missing
- 1250-1340 - As above.
- 1340-1400 - Ls as above w/Camerina; xln Dol at 1370'; 5% Qz pebbles and 5% greenish/gray, sandy Dolosilt.

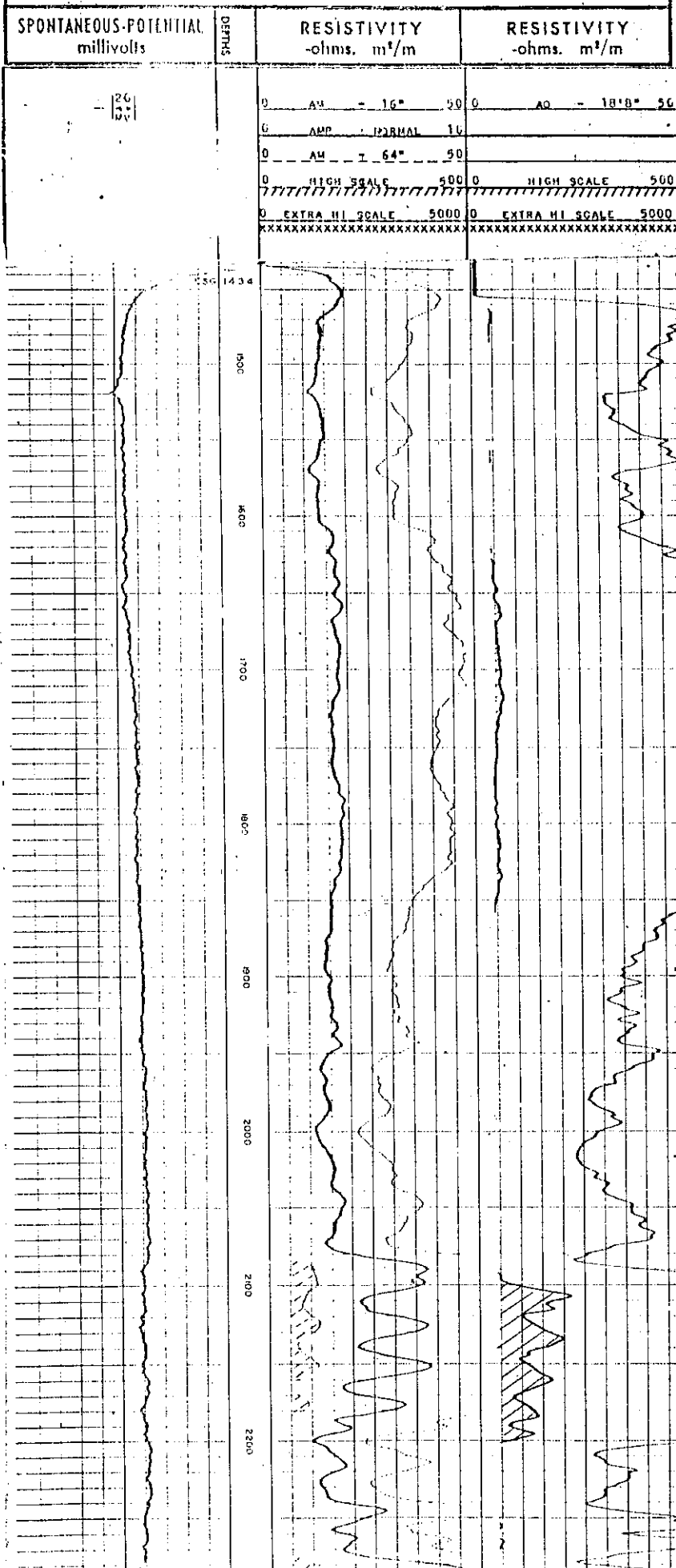
A RILEY REPRODUCTION
Reg. No. 579892

SPONTANEOUS-POTENTIAL millivolts	DEPTH	RESISTIVITY -ohms. m ² /m	RESISTIVITY -ohms. m ² /m
20 45	0	AM - 16"	AO - 10'8" 5.0
	6	AMP - NORMAL 10	
	0	AM - 64"	50
	0	HIGH SCALE 500	HIGH SCALE 510
	0	EXTRA HI SCALE 5000	EXTRA HI SCALE 5000
	XXXXXXXXXXXXXXXXXXXXXXXXXXXX	XXXXXXXXXXXXXXXXXXXXXXXXXXXX	XXXXXXXXXXXXXXXXXXXXXXXXXXXX

A RILEY REPRODUCTION

Reg. No. 579892

#222, W-3579, Immokalee Quad



1400-1424 - Missing

1424-1550 - Chalky Ls, 5-10% carb matter, rare Dictyoconus cookei.

1550-1590 - V p o, granular, part rexal fos Ls; minor-common Dictyoconus.

1590-1620 - Ls as above; minor carb matter.

1620-1630 - Ls as above.

1630-1650 - V p o, granular, part dol Ls.

1650-1670 - Ls as above and 5% med gray, f g, part dol Ls.

1670-1720 - Gray orange, granular, f g, part dol Ls, 5-10% dol Ls.

1720-1760 - Granular Ls as above w/rare Dictyoconus americanus.

1760-1800 - Granular dol Ls w/minor D. americanus.

1800-1820 - V p o, granular, part dol Ls w/rare-common D. americanus.

1820-1860 - As above w/rare carb matter.

1860-1940 - V p o-grayish orange Ls, rare D. americanus, rare-5% carb matter.

1940-1970 - V p o, chalky, dol Ls & 20% mod yel brn f g Dol.

1970-2000 - Granular Ls as above w/common D. americanus & 35-45% mod yel/brn, med xln Dol.

2000-2030 - 90-95% wh, chalky Ls, minor v p o, granular Ls; rare cones.

2030-2040 - 60% wh, chalky Ls & 40% lt-mod brn, med-crse xln Dol.

2040-2050 - 80% v p o, chalky, granular Ls; 20% Dol as above.

2050-2060 - 50/50 Ls and Dol as above.

2060-2070 - 80% Dol as above; 20% Ls as above.

2070-2090 - 50% wh, chalky Ls; 50% Dol as above.

2090-2100 - 80% wh, chalky, silty, carb Ls & 20% wh gypsum.

2100-2110 - 50% wh gypsum & 50% crse xln, v p o selenite.

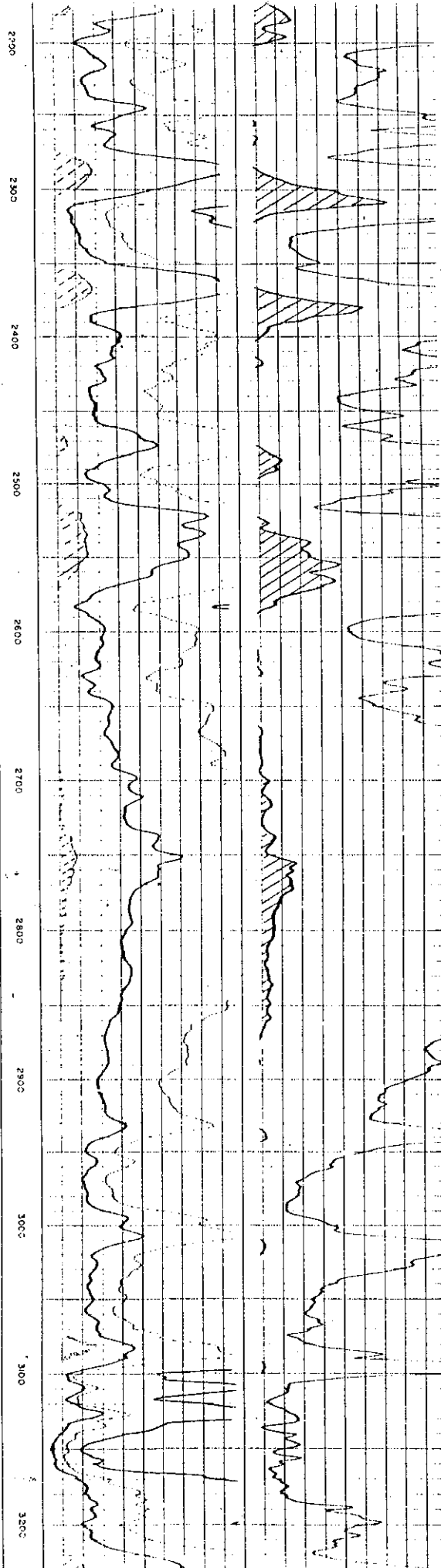
2110-2120 - 60% v p o, selenite, 10% wh gypsum, 30% wh, chalky, rexal Ls.

2120-2140 - Selenite, chalky Ls & gypsum at 2130'.

2140-2170 - Wh gypsum.

#222, W-3579, Immokalee Quad

- 2170-2190 - Gypsum & chalky Ls.
2190-2200 - Gypsum
2200-2210 - 70% gypsum & 30% chalky Ls .
2210-2230 - Chalky Ls, rare cones; minor Dol rhombs aggregates & gypsum.
2230-2270 - As above w/5-60% Dol, 10-30% gypsum & 30-40% Ls.
2270-2280 - V p o, med gr Ls, rare cones, 10% Dol & 5% gypsum.
2280-2290 - 30% chalky, v p o Ls, 60% gray/orange-dk yel/brn, med xln Dol & 15% gypsum.
2290-2330 - As above w/60-80% Dol, 5-20% Ls & 15-20% gypsum.
2330-2340 - V p o Ls, 10% gray orange, crse xln Dol and 5% wh gypsum.
2340-2350 - Chalky Ls, 5% wh gypsum, rare Dol as above and carb matter.
2350-2360 - Mod yel brn, f g xln Dol, 20% v p o, chalky Ls & 10% wh gypsum .
2360-2410 - As above w/5% Ls and 5% wh gypsum .
2410-2430 - As above w/20% Ls and 5% wh gypsum .
2430-2460 - As above w/60-70% Ls, 20-30% Dol, 10% gypsum and cones .
2460-2470 - 75% grayish orange-med gray, f g xln Dol, 20% v p o Ls w/common *D. americanus* & 5% wh chalky gypsum.
2470-2540 - As above w/50-85% Dol, minor selenite at 2470' & 2490'; rare cones at 2510' .
2540-2580 - As above w/10% Dol and 5-10% gypsum.
2580-2610 - As above w/40-60% Dol, 20-30% Ls, 5-15% gypsum & 5-25% bl carb Sltst.
2610-2660 - V p o, Ls, 10% bl carb Sltst & 10% Dol as above at 2610' .
2660-2690 - 60-70% gray orange, f g xln Dol, 20-30% Ls as above & 5-10% Sltst as above .
2690-2700 - V p o, granular Ls, 30% v p o, f g xln Dol, 5% pale yel brn, f g xln Dol, 5% wh gypsum and 10% bl carb Sltst.
2700-2720 - V p o Dol as above, 10% carb Sltst and wh gypsum at 2710' .
2720-2750 - V p o, chalky Ls; 20% Dol as above and 20% bl Sltst as above.
2750-2780 - As above w/5-20% Dol and 10-30% Sltst.
2780-2790 - 50% Ls as above, 45% Dol, and 5% Sltst .
2790-2830 - As above w/50-75% Ls, 10-20% Dol & 0-5% Sltst .
2830-2860 - V p o, chalky Ls, 5% mod yel brn f g xln Dol & rare wh gypsum .
2860-2940 - As above w/5-20% Dol
2940-2950 - V p o, chalky, silty, micritic-granular, dol Ls & 5% gray orange, f g, xln Dol.
2950-2990 - Ls and 10% Dol as above.
2990-3000 - Granular Ls as above & 5% xln Dol as above.
3000-3010 - V chalky, silty Ls and Dol as above.
3010-3030 - Samples missing
3030-3050 - V p o, granular, dol Ls & 5-10% Dol as above.
3050-3070 - Ls as above, some w/Dol rhombs in matrix; rare *Coskinolina elongata* (?).
3070-3080 - Ls as above, 3% p yel orange med xln Dol aggregates of rhombs.

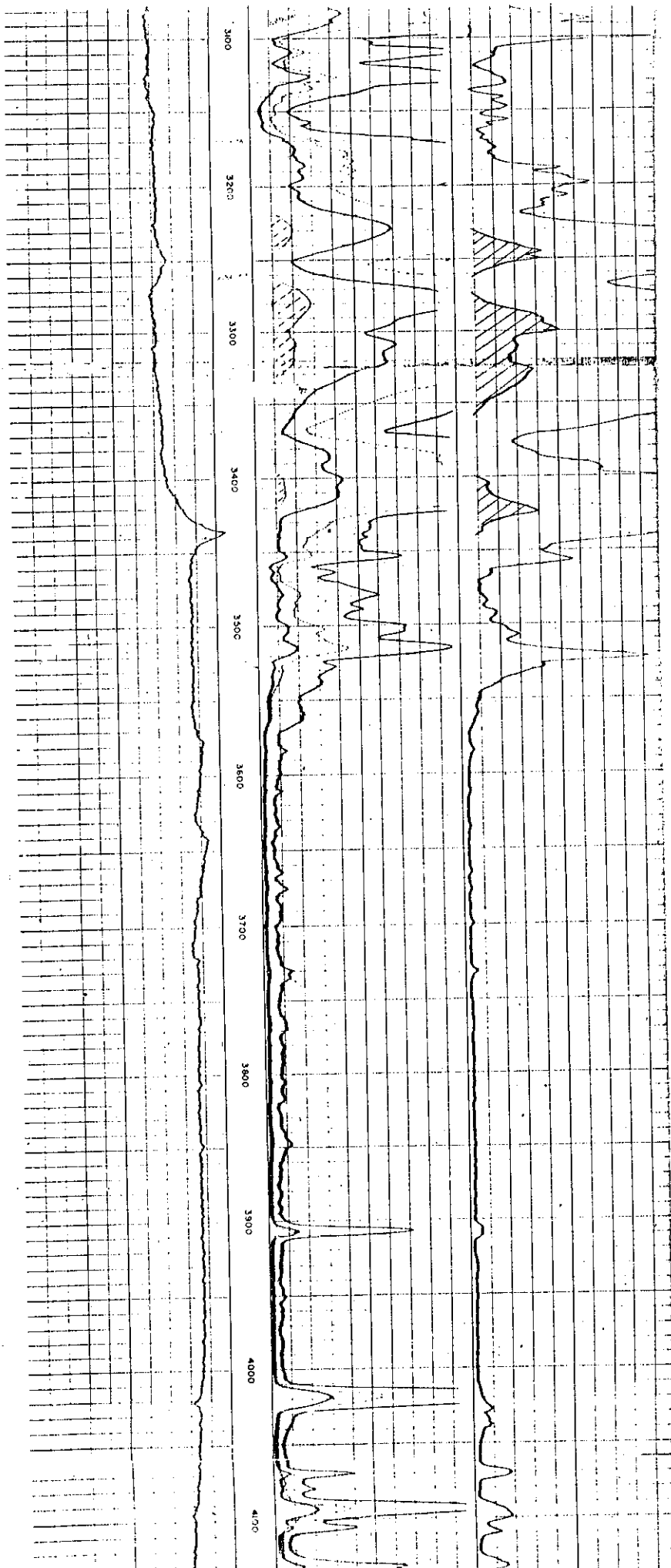


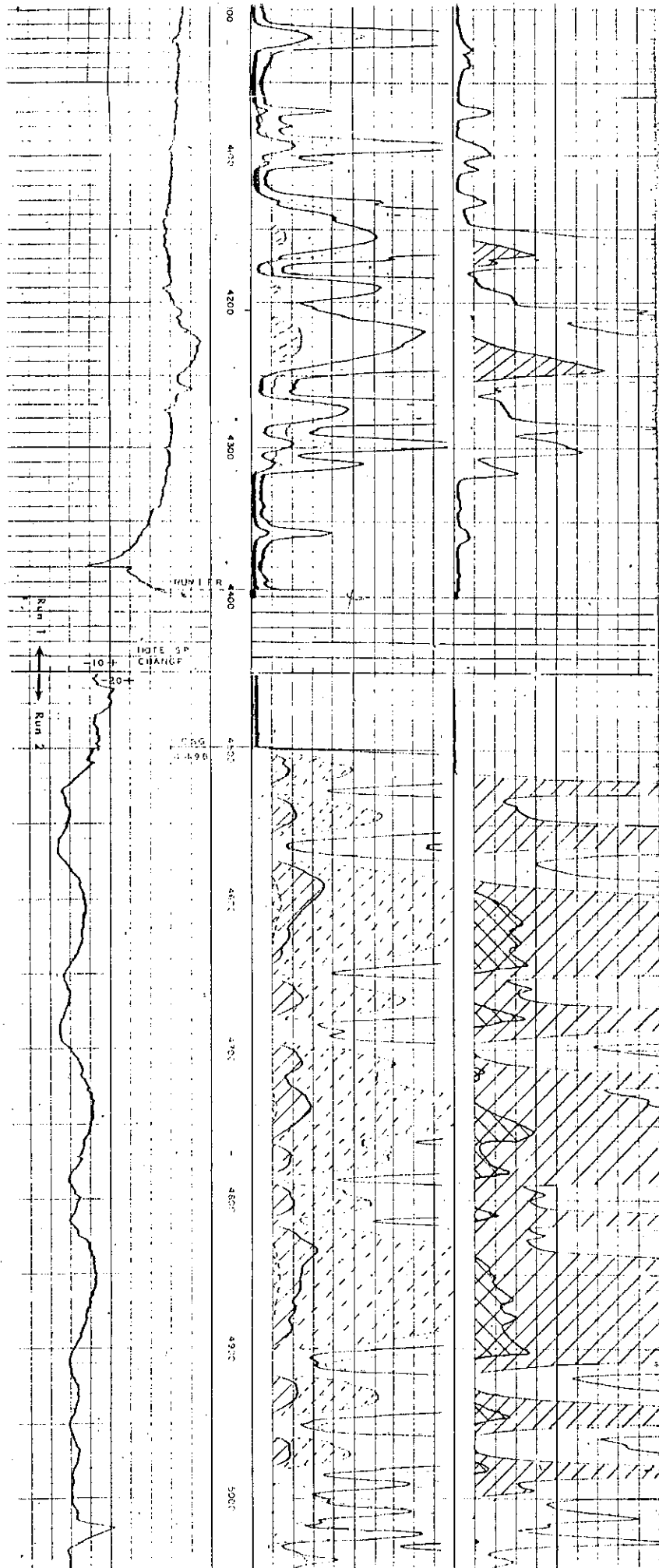
#222, W-3579, Immokalee Quad

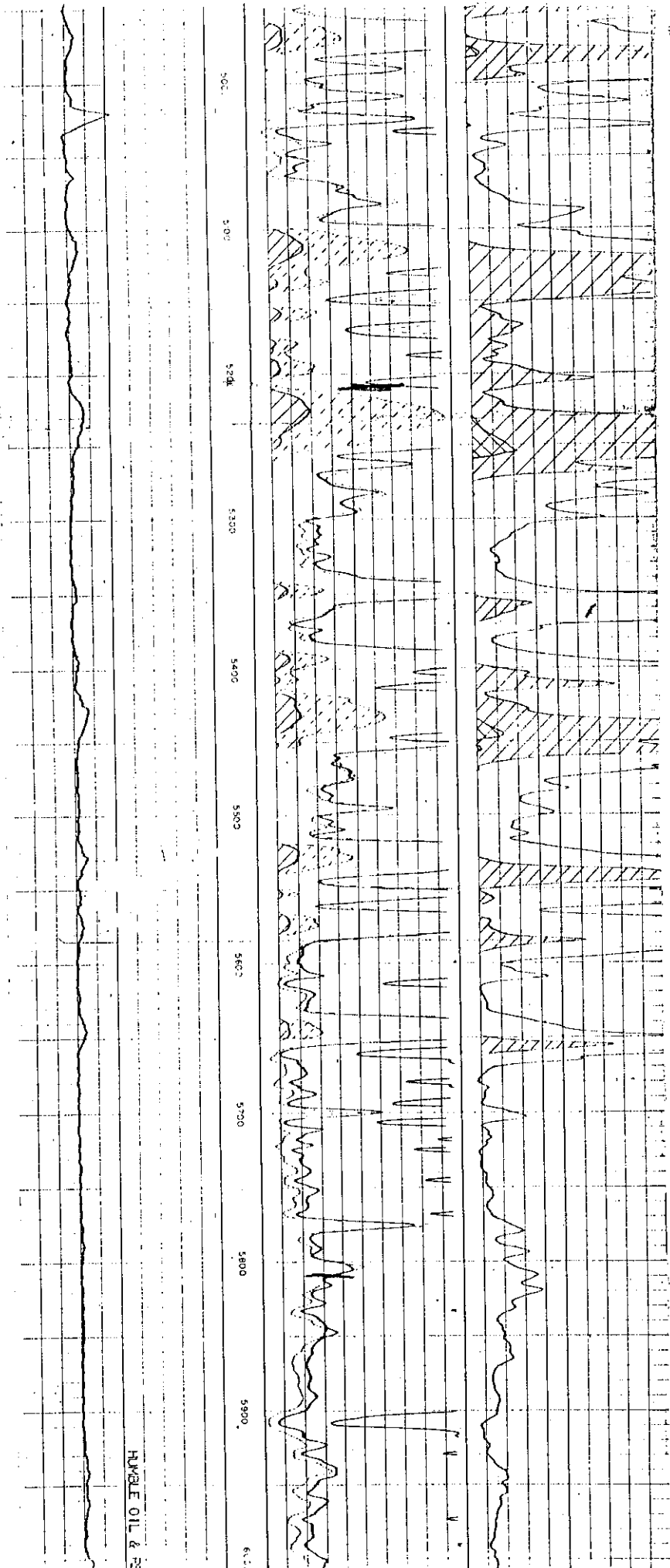
3080-3090 - 80% Ls and 20% Dol rhombs
as above

3090-3100 - 90% gray orange, med, xln
Dol aggregates of rhombs; 5% Ls as above

3100-3120 - Dol as above and \leq 5% Ls as above







HUMBLE OIL & RE