

021-145

Sunniland Quad

Well No. 345 [W-7522] Elevation G.L. 18' D.F. 36' K.B.

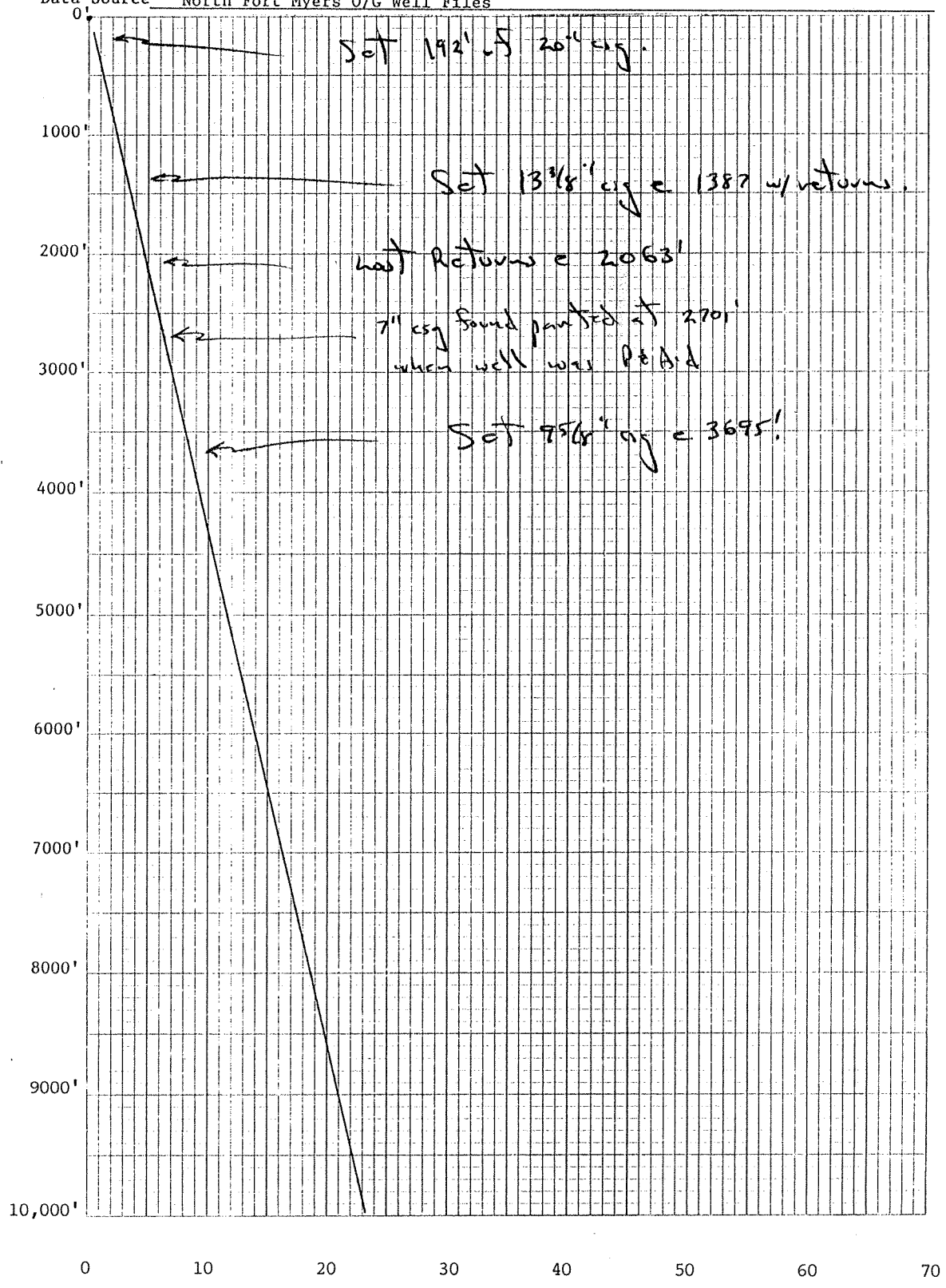
Location 1980' FNL, 660' FEL County Collier

Sec. 24 T 48S R 29E TD 14,500'

Well or Owner's Name Humble #24, GCR (Sunniland Field)

Data Source North Fort Myers O/G Well Files

DEPTH BELOW D. F.



DAYS DRILLED

CALCULATED WATER QUALITY PPM CHLORIDE				LITH	LOST CIRC. ZONES	9 5/8" CSG SCALE THRNSS	DEPTH BELOW D. F.	COMMENTS
2000	4000							
								9 5/8" Casing Scale Description
							200'	1224'-1355' - Very thin to thin, gray/black scale.
								1355'-1421' - Thin, gray/black scale, small conical nodules starting to appear.
							400'	1421'-1520' - Medium thin to medium, gray/black scale; common conical nodules.
								1520'-1619' - Medium to medium thick, gray/black scale; most scale gone 1590'-1619'.
							600'	
								1619'-1718' - Thin, grayish/black scale; common to numerous linear structures.
							800'	1718'-2037' - Thick, black scale; numerous medium & large nodules, some knotty nodules which form linear structures.
								2037'-2100' - No scale, only a thin to medium thin, clayey/like coating. No nodules present.
							1000'	
			1200'					
				13 3/8" csg shoe				
			1400'	vug	No cmt lost			
					10% cmt lost (6 bbl)			
			1600'					
				vug	33% cmt lost (49 bbl)			
			1800'					
					Numerous small vugs			
			2000'		No cmt lost			
				LR	cavity & vugs			
					9 5/8" csg cut			
			2200'					
			2400'					

CALCULATED WATER QUALITY PPM CHLORIDE				LITH	LOST CIRC. ZONES	7" CSG SCALE THKNS	DEPTH BELOW D. F.	COMMENTS
2000		4000						
							2200'	
							2400'	
							2600'	
							2800'	7" parted by corrosion; csg heavily corroded, some small corrosion holes.
							3000'	
							3200'	7" csg cut
							3400'	7" csg scale is a medium thick, greenish/gray scale; numerous very small nodules which appear to be minute crystal clusters of aragonite (?).
							3600'	
							3800'	
							4000'	
							4200'	
							4400'	

#345 Humble #24 GCR, 1980' FNL, 660' FEL,  
Sec. 24, T48S R29E, Collier County  
Sunniland Quad, GL 18', DF 36', TD 14,500'  
Spud 9/18/65, P&A 6/26/89

W-7522, Sunniland Quad

021-~~115~~

Fm

345  
Schlumberger

X - Y CALIPER

CSU Field Log

COMPANY: EXXON COMPANY U.S.A.

WELL: GCRC NO 24

FIELD: SUNNILAND  
COUNTY: COLLIER  
STATE: FLORIDA

LOCATION: 1980' FNL, 660' FEL

SEC: 24 TWP: 48 S RGE: 29 E

PERMANENT DATUM: BHF ELEVATIONS-  
ELEV. OF PERM. DATUM: KB:  
LOG MEASURED FROM: TOP OF HYDR DF:  
ABOVE PERM. DATUM GL: 18' ±  
DRLG. MEASURED FROM: K.B.

DATE: 21 JUN 89  
RUN NO: ONE

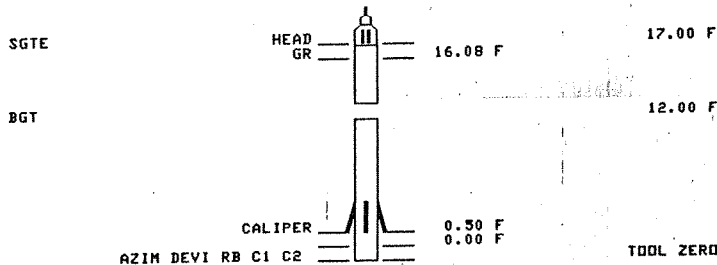
OTHER SERVICES-  
NONE

PROGRAM  
TAPE NO:  
32.2  
SERVICE  
ORDER NO:  
363790

DEPTH-DRILLER: 2100.0 F  
DEPTH-LOGGER: 2093.0 F  
BTM. LOG INTERVAL: 2090.0 F  
TOP LOG INTERVAL: 0.0 F

CASING-DRILLER: 1387.0 F  
CASING-LOGGER: 1388.0 F  
CASING: 13 3/8  
WEIGHT:  
BIT SIZE: 12 1/4  
DEPTH:

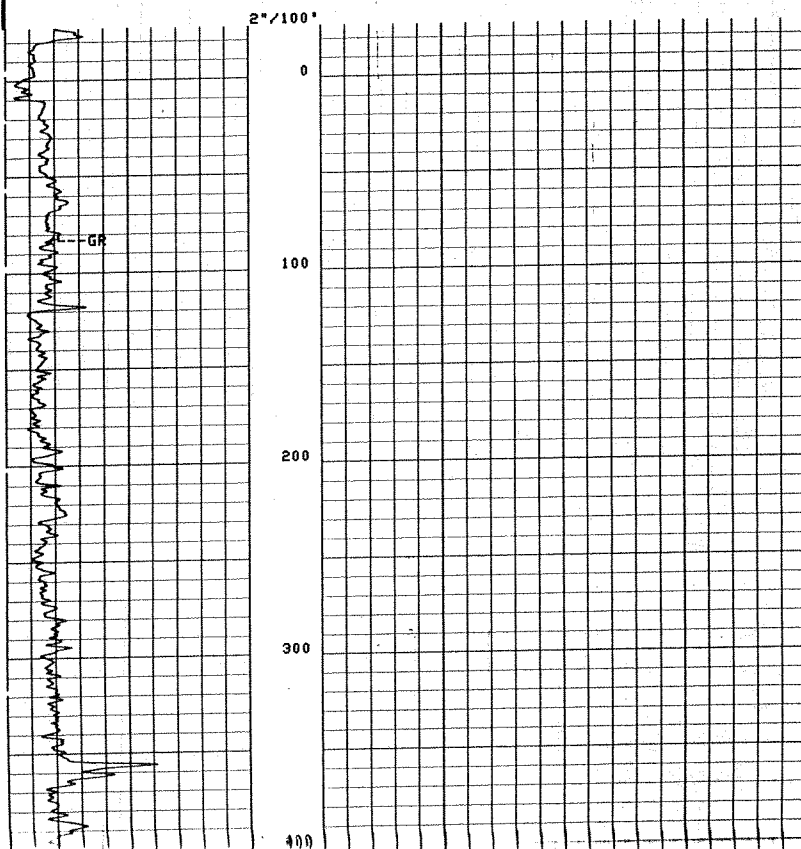
LOGGING TOOL STRING SKETCH

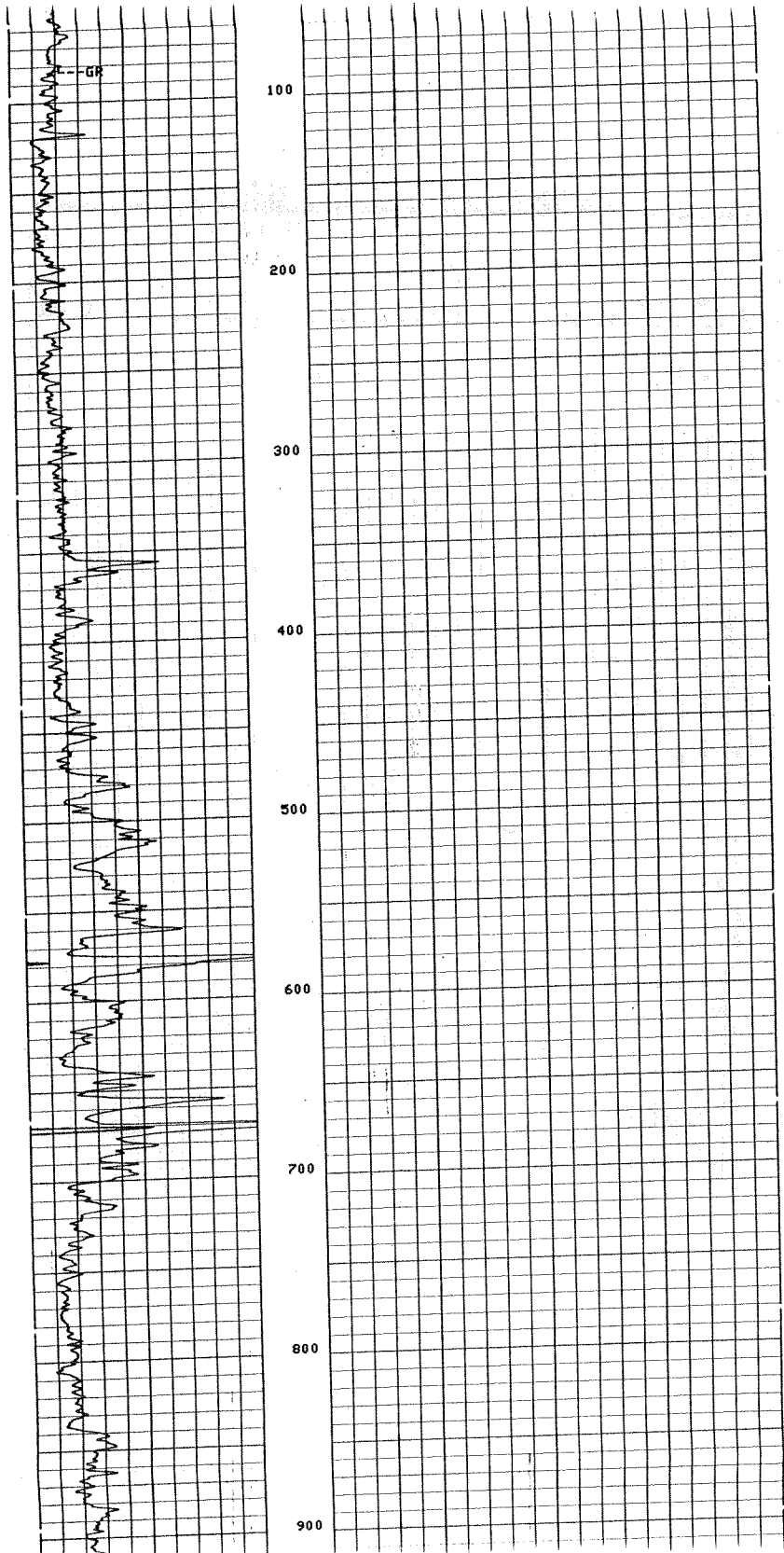


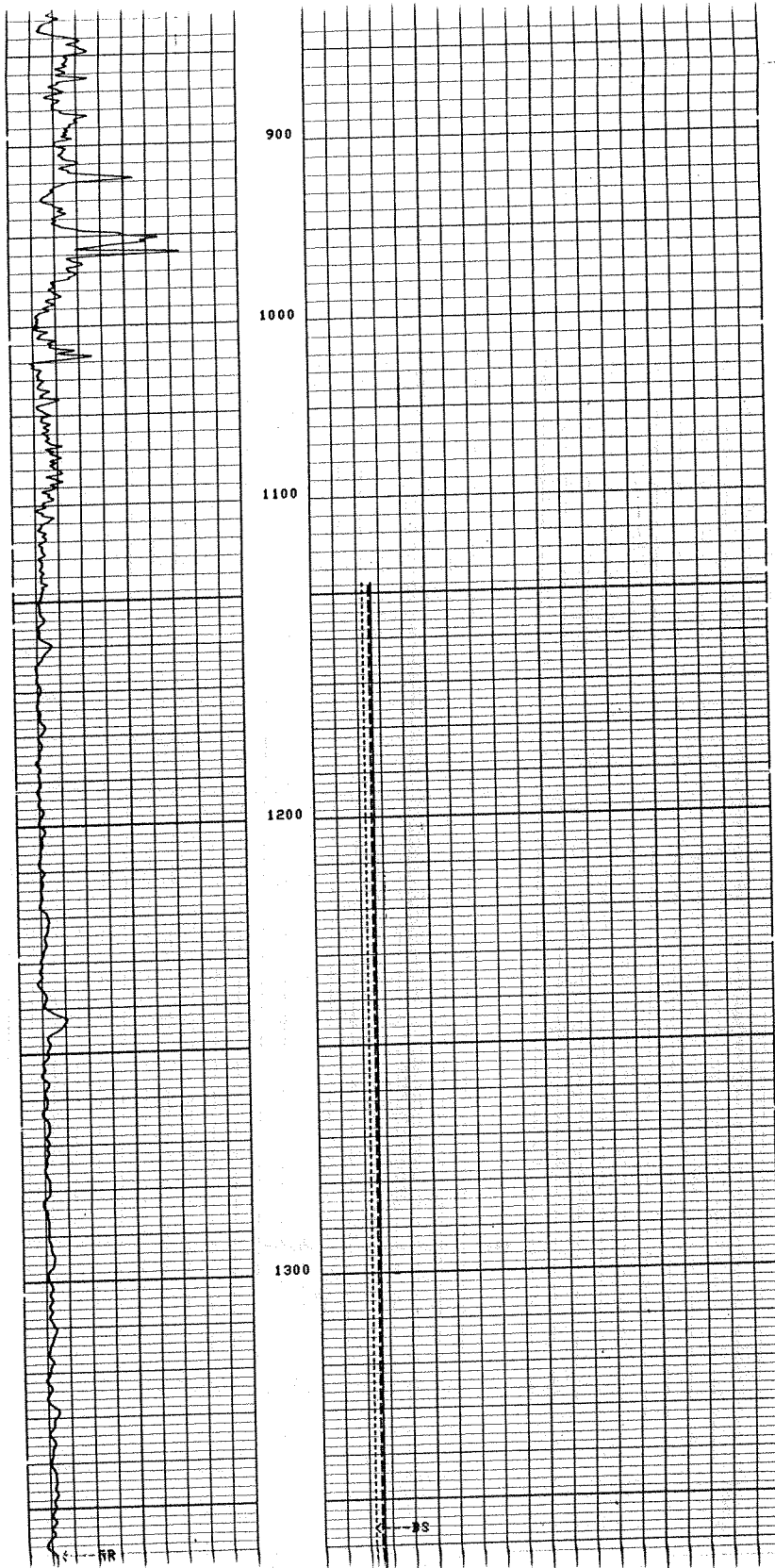
TOTAL TOOL STRING LENGTH IS 30.00 F.  
 TOTAL TOOL STRING WEIGHT IS 330.00 LB IN AIR.

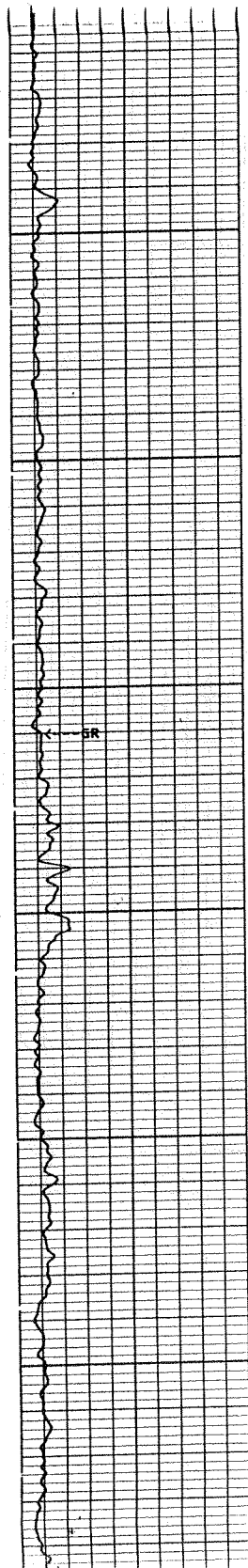
		BS. (IN...)	30.000
	10.000	C2 (IN )	30.000
	10.000	C1 (IN )	30.000
GR (GAP)	0.0		150.00

CP 32.2      FILE 3      21-JUN-1989 18:43





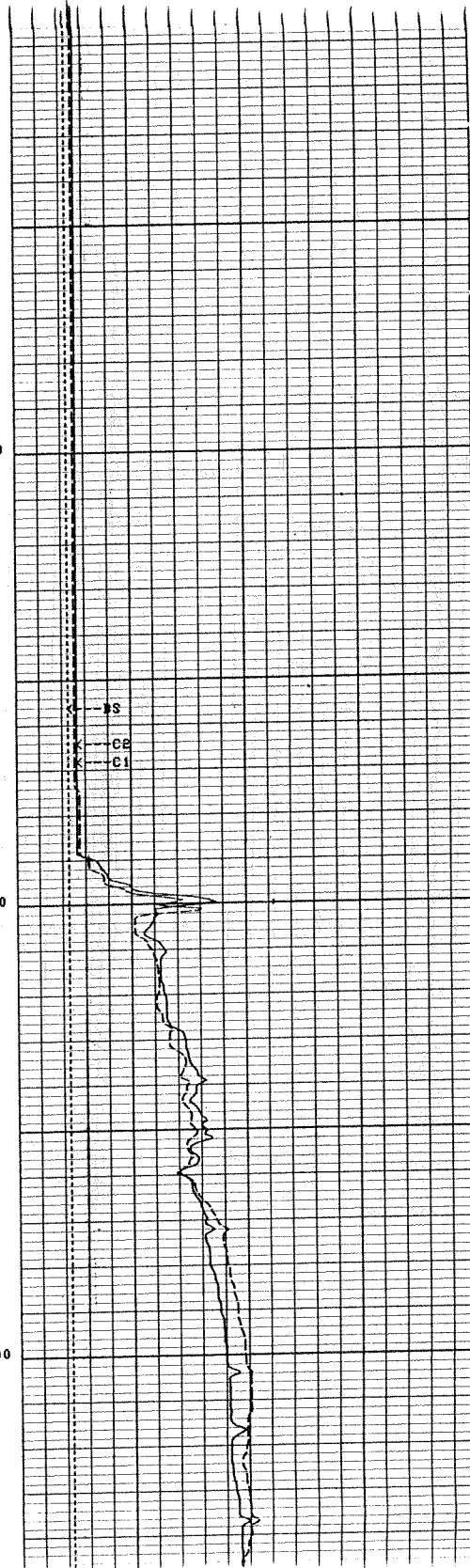




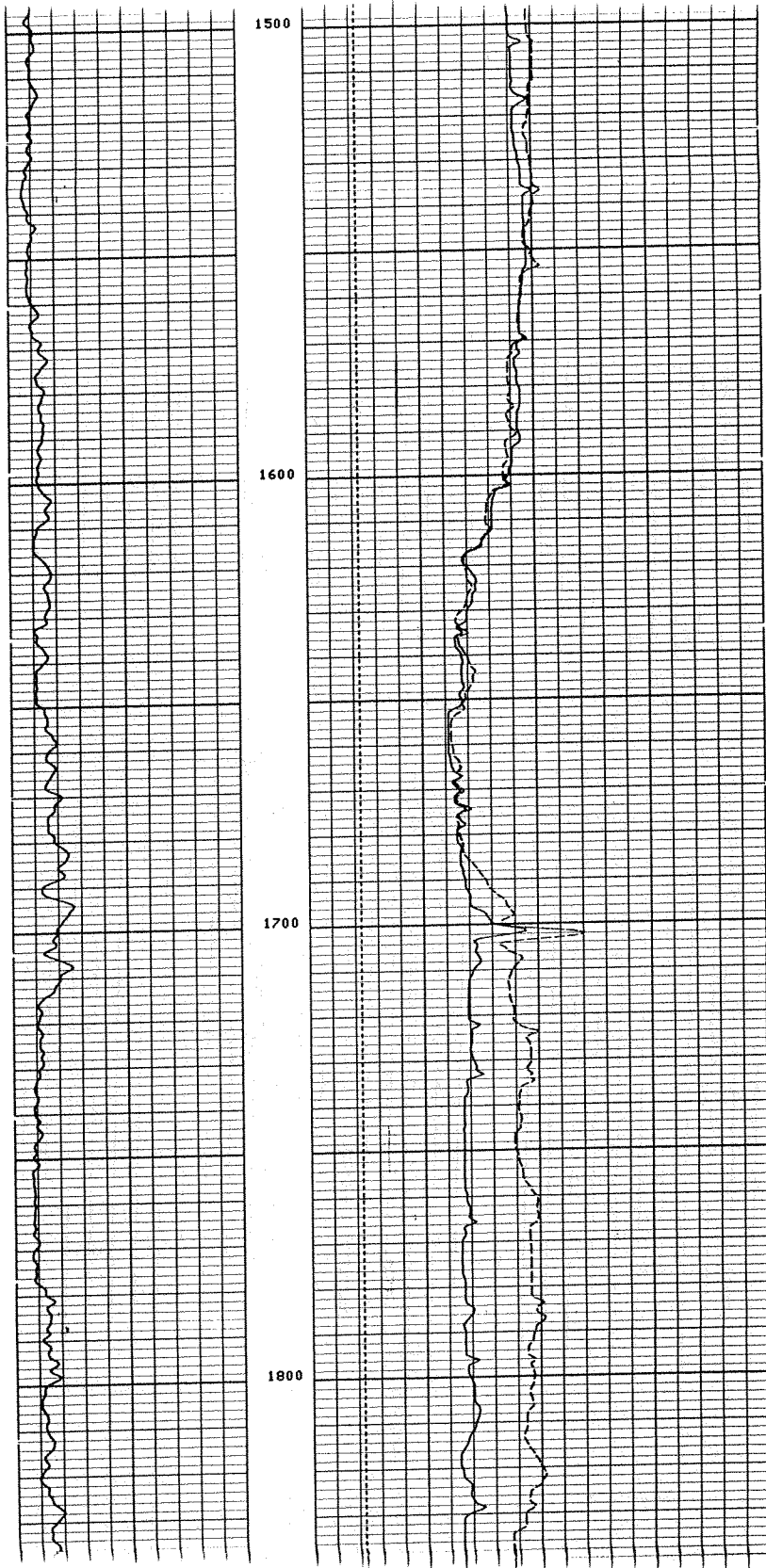
1300

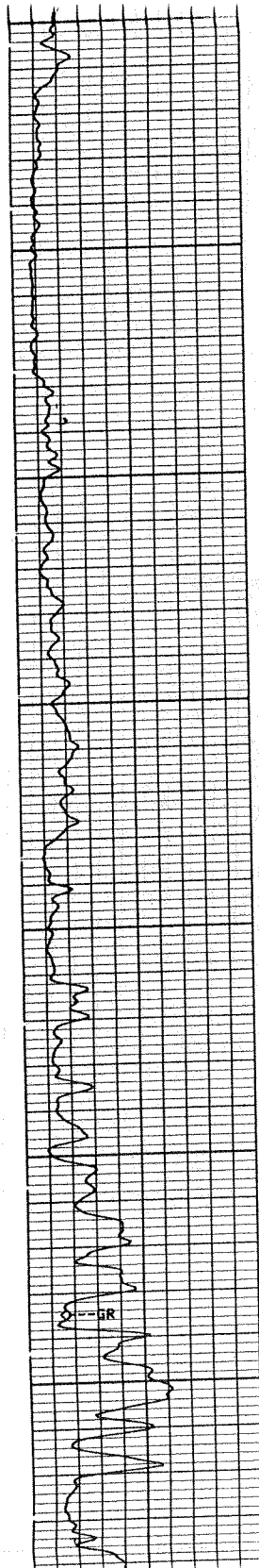
1400

1500







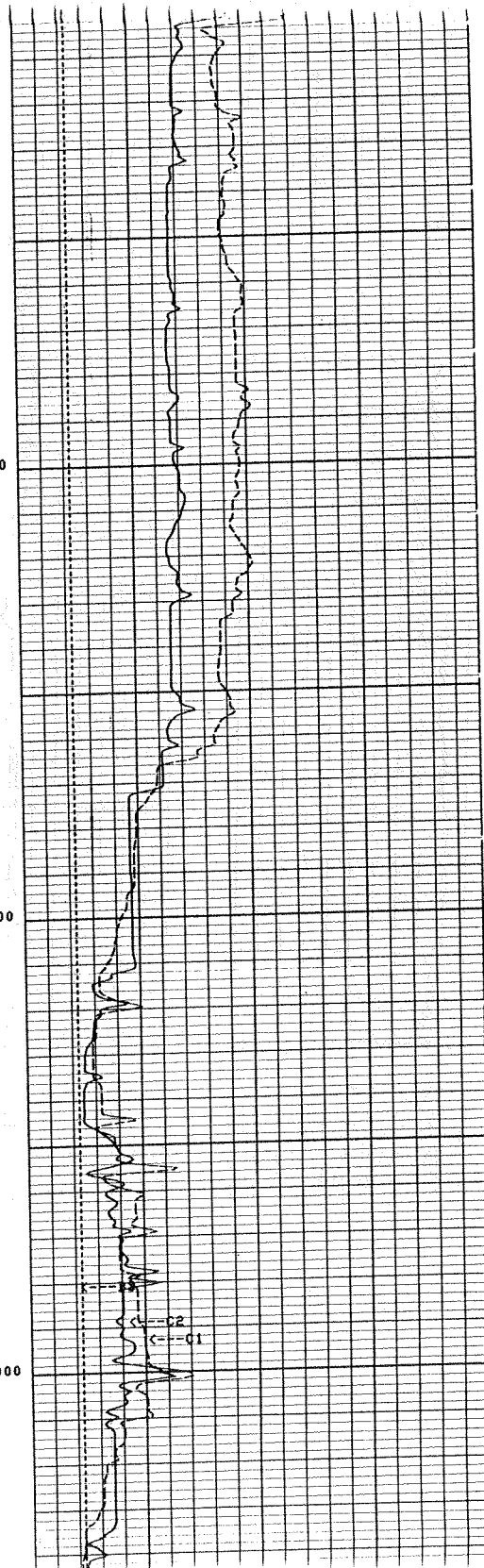


1800

1900

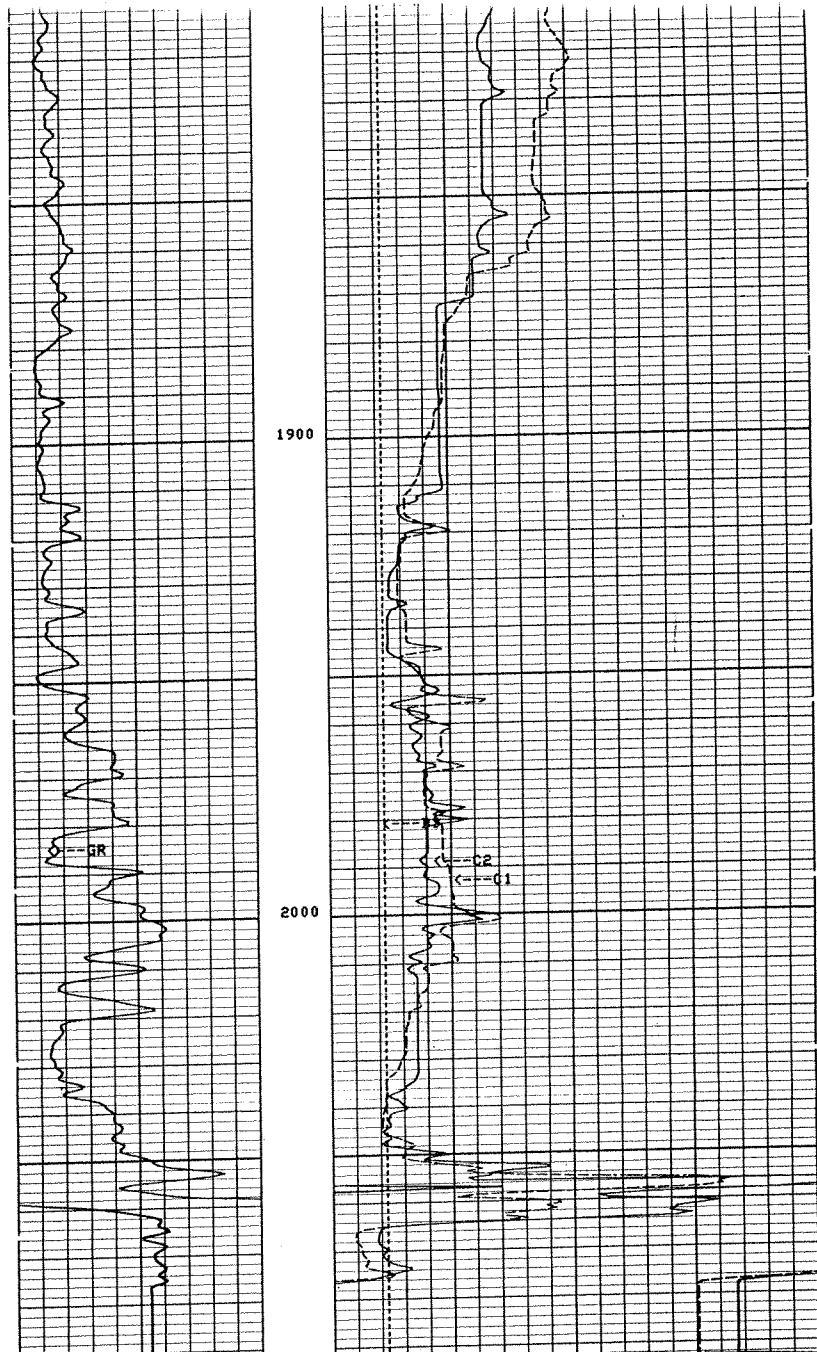
2000

GR



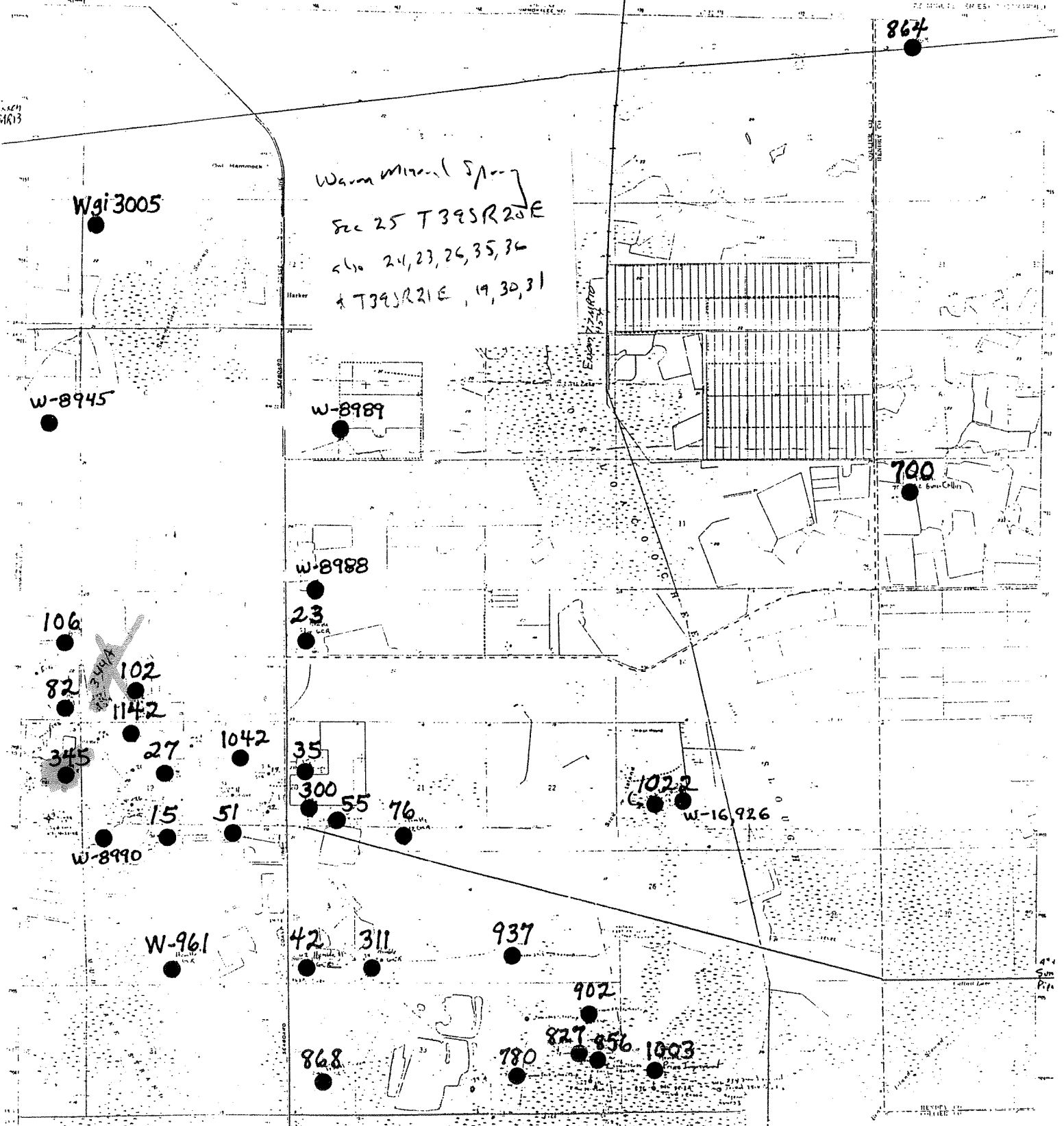
GR

CI



5"/100"

CP 32.2		FILE 3	21-JUN-1989 17:57
GR (GAPI)	0.0	150.00	
	10.000		BS (IN ) 30.000
	10.000		C2 (IN ) 30.000
	10.000		C1 (IN ) 30.000
SENSOR MEASURE POINT TO TOOL ZERO			
C2	0.0	FEEET	GR 16.1 FEEET
DEVI	0.0	FEEET	C1 0.0 FEEET
	0.0	FEEET	RB 0.0 FEEET



Revised, edited, and published by the Geological Survey, U.S. Department of the Interior, Washington, D.C. 20508.

U.S. GEOLOGICAL SURVEY  
WATER RESOURCES DIVISION  
WELL LOCATION MAPS  
SUNNILAND QUADRANGLE  
FLORIDA  
SCALE 1:50,000  
CONTOUR INTERVAL 5 FEET

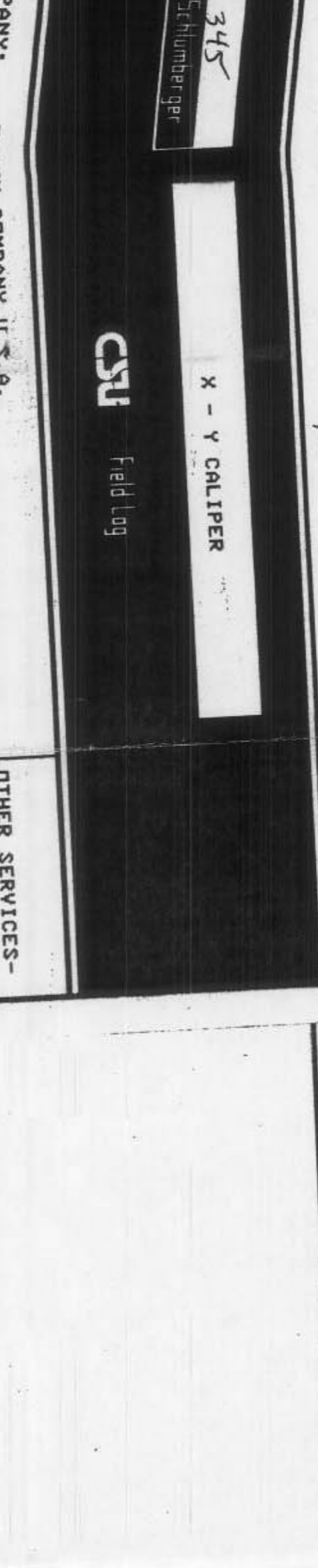


WELL LOCATION MAPS  
SUNNILAND QUADRANGLE  
FLORIDA  
SCALE 1:50,000  
CONTOUR INTERVAL 5 FEET

SUNNILAND, FLA.  
WELL LOCATION MAP  
SCALE 1:50,000  
CONTOUR INTERVAL 5 FEET

Well Location Map - Sunniland Quad

01-115



COMPANY: OXCON COMPANY U.S.A.  
 WELL: GGCDC WJ 24  
 LOCATION: SUNNYSIDE  
 STATE: TEXAS  
 LOCATION: 1980 FALL COFFEE  
 SEC: 24 TWP: 48 S RBE: 29 E  
 PERMANENT DATUM: BMF  
 ELEV: 489.0  
 LOG MEASURED FROM: TOP OF HOLE  
 BRG: MEASURED FROM: K 3  
 DATE: 21 JUN 89  
 RUN NO: 016  
 DEPTH BRILLER: 2100.0 F  
 BIT LOGGER: 2300.0 F  
 TOP LOG INTERVAL: 0.0 F  
 CASING DRILLER: 1387.0 F  
 CASING LOGGER: 1390.0 F  
 BIT DEPTH: 12 1/4

TYPE FLUID IN HOLE: SALTWATER  
 DENSITY:  
 VISCOSITY:  
 PH:  
 FLUID LOSS:  
 SOURCE OF SAMPLE: AT AT  
 RMH: AT AT  
 RMF:  
 RMC:  
 SOURCE RMF/RMC: AT AT  
 RM AT BHT: AT AT  
 RMC AT BHT: AT AT  
 TIME CIRC. STOPPED:  
 TIME LOGGER ON BHT:  
 MAX. REC. TEMP:  
 LOGGING UNIT NO: 8193  
 LOGGING UNIT LDC: FT MYERS  
 RECORDED BY: SCHULER  
 WITNESSED BY: HUNTER

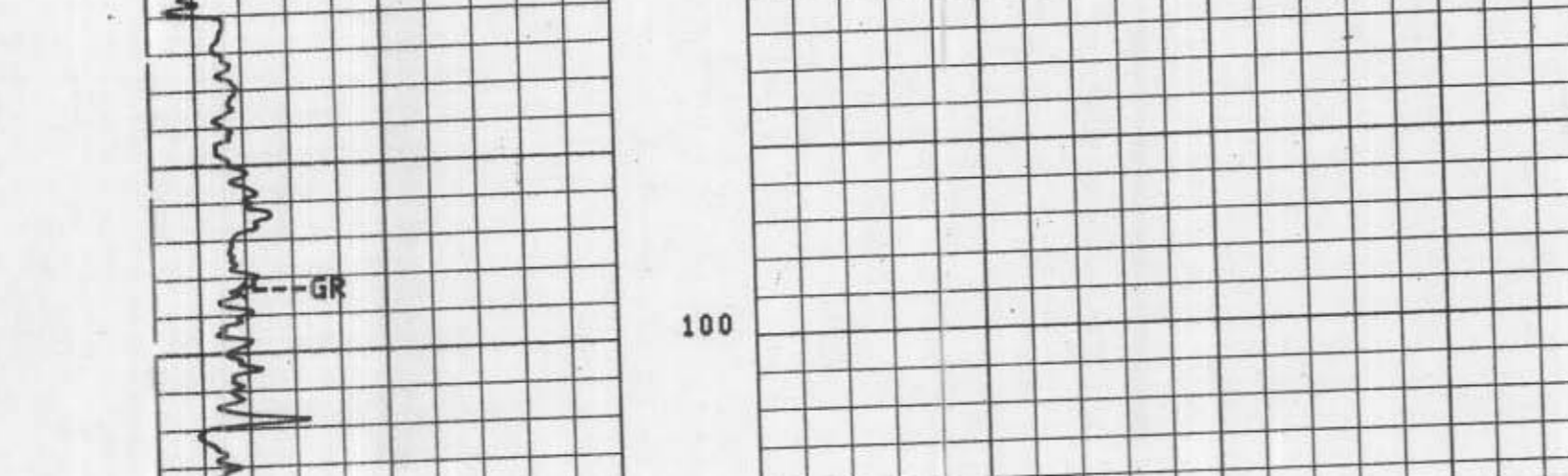
REMARKS:  
 LOG ZERO: TOP OF HYDRIL

EQUIPMENT NUMBERS-  
 BETA 3804 3GN 725

ALL INTERPRETATIONS ARE OPINIONS BASED ON INFERENCES FROM ELECTRICAL OR OTHER MEASUREMENTS AND WE CANNOT, AND DO NOT GUARANTEE THE ACCURACY OR CORRECTNESS OF ANY INTERPRETATIONS, AND WE SHALL NOT, EXCEPT IN THE CASE OF GROSS OR WILLFUL NEGLIGENCE ON OUR PART, BE LIABLE OR RESPONSIBLE FOR ANY LOSS, COST, DAMAGES OR EXPENSES INCURRED OR SUSTAINED BY ANYONE RESULTING FROM ANY INTERPRETATION MADE BY ANY OF OUR OFFICERS, AGENTS OR EMPLOYEES. THESE INTERPRETATIONS ARE ALSO SUBJECT TO OUR GENERAL TERMS AND CONDITIONS AS SET OUT IN OUR CURRENT PRICE SCHEDULE.

CP 32.2 FILE 5 21-JUN-1989 18148

LOGGING TOOL STRING SKETCH



TOTAL TOOL STRING LENGTH IS 20.17 F.  
 TOTAL TOOL STRING HEIGHT IS 330.00 LB IN AIR.

10.000	BS (IN)	30.000
10.000	CP (IN)	30.000
10.000	CL (IN)	30.000
0.0	GR (GAP)	150.00

CP 32.2 FILE 3 21-JUN-1989 18143



CP 32.2 FILE 3 21-JUN-1989 17157

10.000	BS (IN)	30.000
10.000	CP (IN)	30.000
10.000	CL (IN)	30.000
0.0	GR (GAP)	150.00

SENSOR MEASURE POINT TO TOOL ZERO

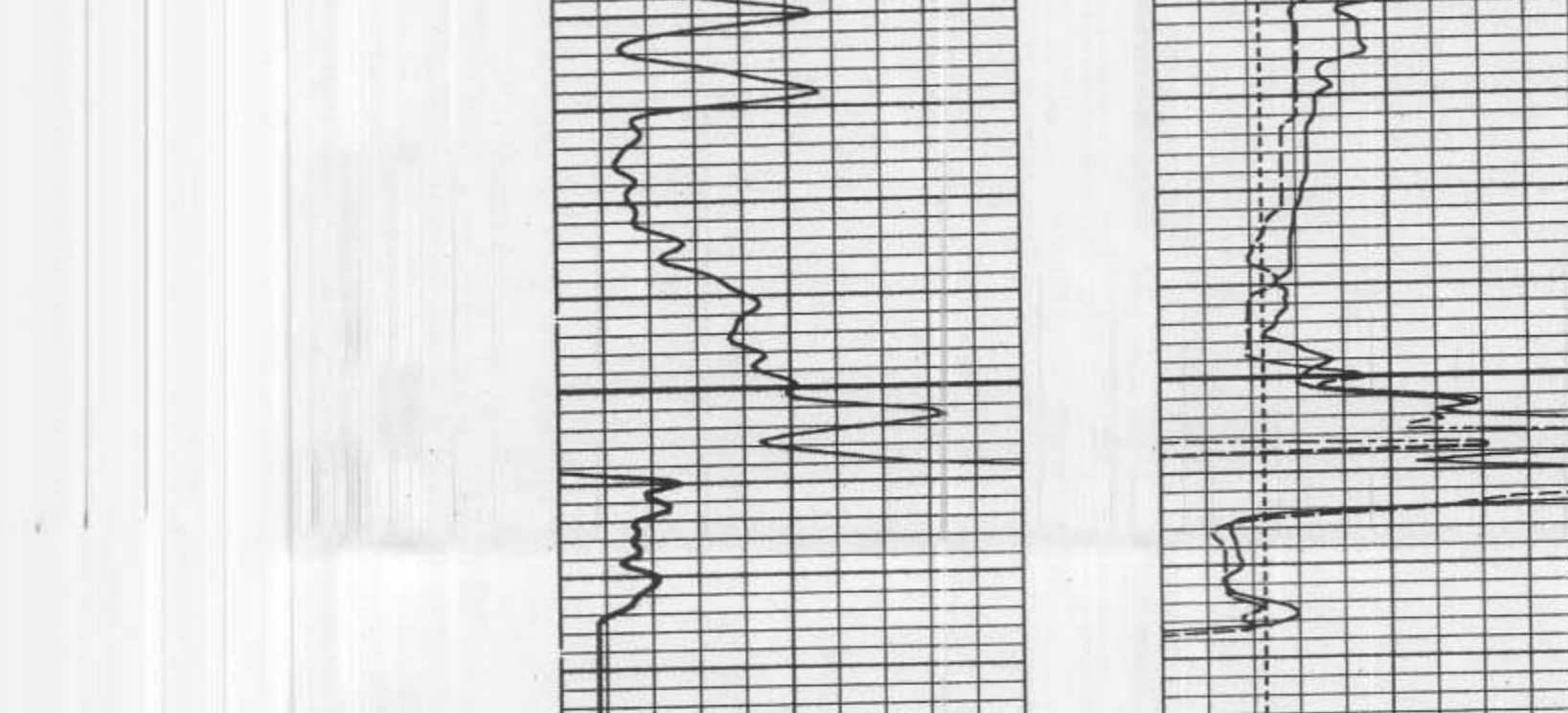
CB	0.0 FEET	GR	16.1 FEET
BEVI	0.0 FEET	CL	0.0 FEET
AZIM	0.0 FEET	RB	0.0 FEET
TENS	0.0 FEET		

PARAMETERS

NAME	VALUE	UNIT	NAME	VALUE	UNIT
MUD	0.00000	LB/G	MCT	36	
FCD	0.0	IN	BS	12.2500	IN
BKS	OPEN				

REPEAT SECTION

CP 32.2 FILE 2 21-JUN-1989 17154



CP 32.2 FILE 2 21-JUN-1989 17147

10.000	BS (IN)	30.000
10.000	CP (IN)	30.000
10.000	CL (IN)	30.000
0.0	GR (GAP)	150.00

SENSOR MEASURE POINT TO TOOL ZERO

CB	0.0 FEET	GR	16.1 FEET
BEVI	0.0 FEET	CL	0.0 FEET
AZIM	0.0 FEET	RB	0.0 FEET
TENS	0.0 FEET		

PARAMETERS

NAME	VALUE	UNIT	NAME	VALUE	UNIT
MUD	0.00000	LB/G	MCT	36	
FCD	0.0	IN	BS	12.2500	IN
BKS	OPEN				

CALIPER CALIBRATION SUMMARY

DET	MEASURES	CALIBRATED	UNITS
	SMALL	LARGE	
CB	12.25	34.5	IN
C1	12.25	34.5	IN

OXCON COMPANY  
 2200 NICHOLSON AVENUE, SUITE 170  
 FT. WORTH, TEXAS 76101