

Well No. 352 (W-7474)

Elevation G.L. 36.2' D.F. 53.4' K.B.

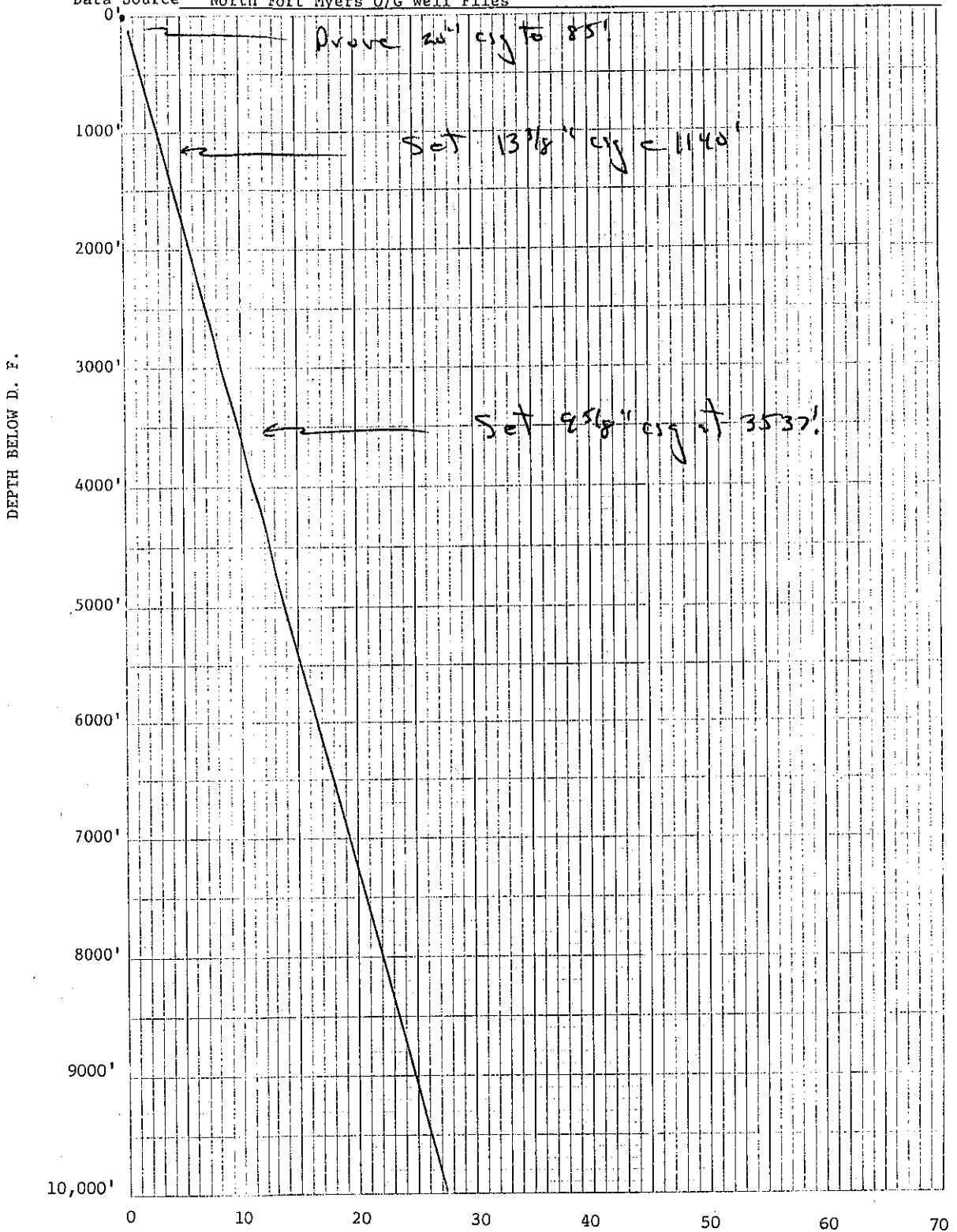
Location 1025' FEL, 1079' FNL

County Collier

Sec. 5 T 46S R 29E TD 11,491'

Well or Owner's Name Sun 5-1 WIW SFU

Data Source North Fort Myers O/G Well Files



DAY'S DRILLING

Permit #352
W-7474
Sun Oil 5-1 Collier Co(SFU)
1025' FEL, 1079' FNL sec 5, T46S R29E
Sunoco Felda Field
Collier County, Felda Quad
GL: 36' DF: 53' TD: 11,491'
Spud: 10/03/65 P&A: 05/10/90

Washed & unwashed cuttings are available from the Florida Geological Survey cuttings library in Tallahassee. Brief lith log of washed/unwashed cuttings by R. S. Caughey in February 1999.

<u>Depth in feet below DF</u>	<u>DESCRIPTION</u>
GL-50	No samples
50-80	Siltstone, greenish gray, vfg sdy, phos, sltly calc, some is clayey; 1% loose phos grns & a few Qz grns. Unwashed: Siltstone & 10-20% claystone.
80-110	As above, with more loose vf-f Qz sand. Unwashed: Clayey siltstone & some claystone.
110-140	As above, more loose vf silts. Unwashed: Siltstone & 30-40% silty claystone.
140-170	80% Loose Qz sand, vf-f-m-c & common pebbles, ang-rnd; a few phos grns & rare pebbles; 20% Ls, wh, fos, mollusks; minor Ss & claystone. Unwashed: As above, with 10-20% silty claystone.
170-200	Siltstone, greenish gray, clayey, calc, sltly sdy(vf-f) & phos; 10-15% Ls, wh, fos, as above. Unwashed: As above, with 10-20% claystone, greenish gray, calc, silty.
200-230	Loose Qz sand, silt size-vf-f-some coarse; 30% Ls & mollusk shell frags; minor phos grs. Unwashed: More Ls & shell frags, less Qz sand; both washed & unwashed have much LCM(Lost Circulation Material).
230-260	As above, washed & unwashed, now sltly more Ls & shell frags.
260-290	As above, washed & unwashed, now 30-40% Ls, remainder is loose Qz sand.

#352, W-7474, Sun Oil 5-1 SFU, NE/4 sec 5, T46S R29E, Felda Quad

Depth in feet below DF	DESCRIPTION
290-320	80% Loose Qz sand, f-m-some coarse; 20% Ls & mollusk shell frags; minor phos grs & grns. Unwashed: No sample available.
320-350	Largely loose Qz sand, f-m-c, most is med & coarse; 2-4% loose phos grs & grns; 5% Ls & mollusk shell frags; minor v pale olive, fg, phos Ss; trace wh, dolosilt(?); minor LCM.
350-380	Ls, wh, sdy, phos, fos, some cheilostome & encrusting bryozoa, numerous mollusk shell frags, a few crab claws; 20% loose Qz sand, most is coarse; 1-3% loose phos grs/grns. Unwashed: As above.
380-410	Ls, wh, lt gray, sdy, fos, phos, com-numerous mollusks, common echinoid spines, cheilostome bryozoa present; some loose Qz sand & less than 1% phos grs. Unwashed: As above.
410-440	Ls/fos as above, some encrusting bryozoa; 10-15% loose Qz sand, med & common coarse, rnd; 2-4% phos grs, grns & minor crust(?). Unwashed: As above, with 5-10% claystone & clayey siltstone.
440-470	Ls, yel gray-wh, sdy, phos, v fos, common cheilostome bryozoa, com-numerous mollusks, some encrusting bryozoa, a few gastropods; 5% loose Qz sand as above; tr-minor Dol, yel gray, fg xln, anhedral. Unwashed: As above, with 5% claystone & siltstone.
470-500	Ls/fos as above, a little Ls is v wkly dolomitized by vf, grayish yellow, euhedral xls; 1% loose phos grs/grns; minor loose Qz sand; some calcite replaces some fossils. Unwashed: As above, with minor loose dolosilt particles.
500-530	Ls/fos as above, some cheilostome & encrusting bryozoa, com-numerous mollusks & echinoid spines; overall less phos & more calcite. Unwashed: As above.
530-560	As above; 2-3% Dol, yel gray, fg xln, subhedral/euhedral, phos. Unwashed: As above, with 10-20% dolomitic, phos marl.

Depth in feet
below DF

DESCRIPTION

560-590	Dol, yel gray, some pale olive & med gray, vf-f xln, anhedral/subhedral, some is phos, some is vuggy, some with cheilostome bryozoa not replaced by Dol; 1-3% phos grs, grns, fos, crust, rare pebbles; 5% dolosilt, pale olive, clayey. Unwashed: As above, with \pm 50% dolomitic marl.
590-620	Dol as above. Unwashed: As above, with 50-60% dolomitic marl.
620-650	Ls, wh, v lt gray, fg & micritic, sltly phos-phos, sltly fg sdy, fos, mollusks, some to common gastropods (no cheilostome bryozoa).
650-680	Ls, wh, v pale orange(vpo), grayish orange, fg, sltly sdy to sdy(vf-f-some med, subang-subrnd), minor phos grs, a few mollusks, rare forams(?), rarely Ls is wkly to modly dolomitized by fine euhedral/subhedral, grayish orange xls; minor wh Ss; trace calcrete(?). Unwashed: As above, with minor silt/clay & wh, clayey, poorly consolidated Ls.
680-710	As above, but overall more sdy & sltly more Ss; little to no dolomitic Ls or calcrete(?).
710-740	As above, with 5-10% fos hash Ls, sdy, v sltly phos, porous, fossils cemented by vf drusy calcite.
740-770	As above, less fos hash Ls; some wh, fg, "chalky" Ls, with little to no sand & rare to no phos; minor Dol, grayish orange, f xln, subhedral; some xln calcite. Unwashed: As above, with \pm 50% wh, clayey, poorly consolidated Ls.
770-800	As above, a few gastropods & echinoid spines; some to common calcite. Unwashed: As above, with 50-80% wh, clayey, poorly consolidated Ls.
800-830	As above, with 30% Ss, v pale orange, v lt gray, commonly cemented by drusy calcite, rare phos, some fos; minor Dol, grayish brn, f xln, anhedral/subhedral. Unwashed: As above, some wh, clayey, poorly consoli Ls.
830-860	Ls, vpo, fg, sdy to v sdy, rare to no phos, few fos. Unwashed: As above.

Depth in feet
below DF

DESCRIPTION

860-890 Ls as above, but overall more sdy, some grades to a calc Ss.
Unwashed: As above, with 20% loose silt & vf-f Qz sand.

890-920 65% Ls, v lt gray to yel gray, sdy, phos, fg, fos, mollusks, crab claws; 35% Ls, yel gray, porous, v fos, stly sdy, fossils have rnd edges & unit is cemented by fine drusy calcite.
Unwashed: As above.

920-950 Ls as above, overall more v lt gray-yel gray, sdy, phos Ls; some coarsely xln calcite.
Unwashed: As above.

950-980 Ls as above, common coarsely xln calcite, common to numerous mollusks, some crab claws.
Unwashed: As above.

980-1010 Ls as above, about equal v lt gray & yel gray, numerous mollusks, some crab claws, common calcite.
Unwashed: As above.

1010-1040 Dol, yel gray, some grayish brn, vf xln, anhedral/subhedral, rare minute phos grs, no sand; minor Dol, grayish orange, med xln, euhedral; minor Ls/fos as above; minor Ls, v pale orange, microgranular, v fos.
Unwashed: As above.

1040-1070 Ls, vpo to wh, microgranular, some granular, v fos, some peloids & forams, no sand, no phos; some Dol as above.
Unwashed: As above, with some wh, fg, "chalky" Ls.

1070-1100 Ls as above, now stgly rexal, calcite commonly replaces some fos & Ls matrix, common Lepidocyclina, some are large & saddle shape, some small, thin & flat, a few red algae fragments.
Unwashed: As above, with 5% pale olive, sdy, clayey, calc siltstone.

Last cutting sample within the Floridan aquifer @ 1070'-1100'

#352, W-7474, Felda Quad
 Sun Oil 5-1 Collier Company
 1025' FEL, 1079' FNL sec 5, T46SR29E
 Sunoco Felda Field, Collier County
 GL: 36' DF: 53' TD: 11,491'
 Spud: 10/03/65 P&A: 05/10/90

Brief lith log of washed/unwashed
 cuttings by R.S. Caughey 02/99.

Schlumberger 352 X - Y CALIPER CSI Fld Log	
COMPANY: EXXON COMPANY U.S.A. WELL: SUNOCO FIELD UNIT 5-1 FIELD: FELDA COUNTY: COLLIER STATE: FLORIDA LOCATION: 1025' FEL, 1079' FNL ECL: 5 TWP: 46 S RGE: 29 E	EQUIPMENT DATA: LOG PERM. DATUM: 56.2 DO MEASURED FROM: HYDRIL % ABOVE PERM. DATUM RLG. MEASURED FROM: K.B. ELEVATIONS:- KBI DFI 53.7' GLI 56.1'
DATE: 3 MAY 90 UN NO:	OTHER SERVICES:- PROGRAM TAPE NO: 30.4 SERVICE ORDER NO: 399129
EPTH-DRILLER: 2211.0 F EPTH-LOGGER: 2200.0 F TM, LOG INTERVAL: 2200.0 F DP LOG INTERVAL: 0.0 F ASING-DRILLER: 1190.0 F ASING-LOGGER: 1128.0 F ASING: 13 3/8 IT SIZE: 12 1/4 DEPTH:	

TYPE FLUID IN HOLE:
 DENSITY:
 VISCOSITY:
 PH:
 FLUID LOSS:
 SOURCE OF SAMPLE:
 RM: AT
 RMF: AT
 RMC: AT
 SOURCE RMF/RMC: /
 RM AT BHT: AT
 RMF AT BHT: AT
 RMC AT BHT: AT

TIME CIRC. STOPPED:
 TIME LOGGER ON BTH.:

MAX. REC. TEMP:

LOGGING UNIT NO: 8306
 LOGGING UNIT LOC: FT. MYERS
 RECORDED BY:
 WITNESSED BY: BUCK

REMARKS:

EQUIPMENT NUMBERS:-

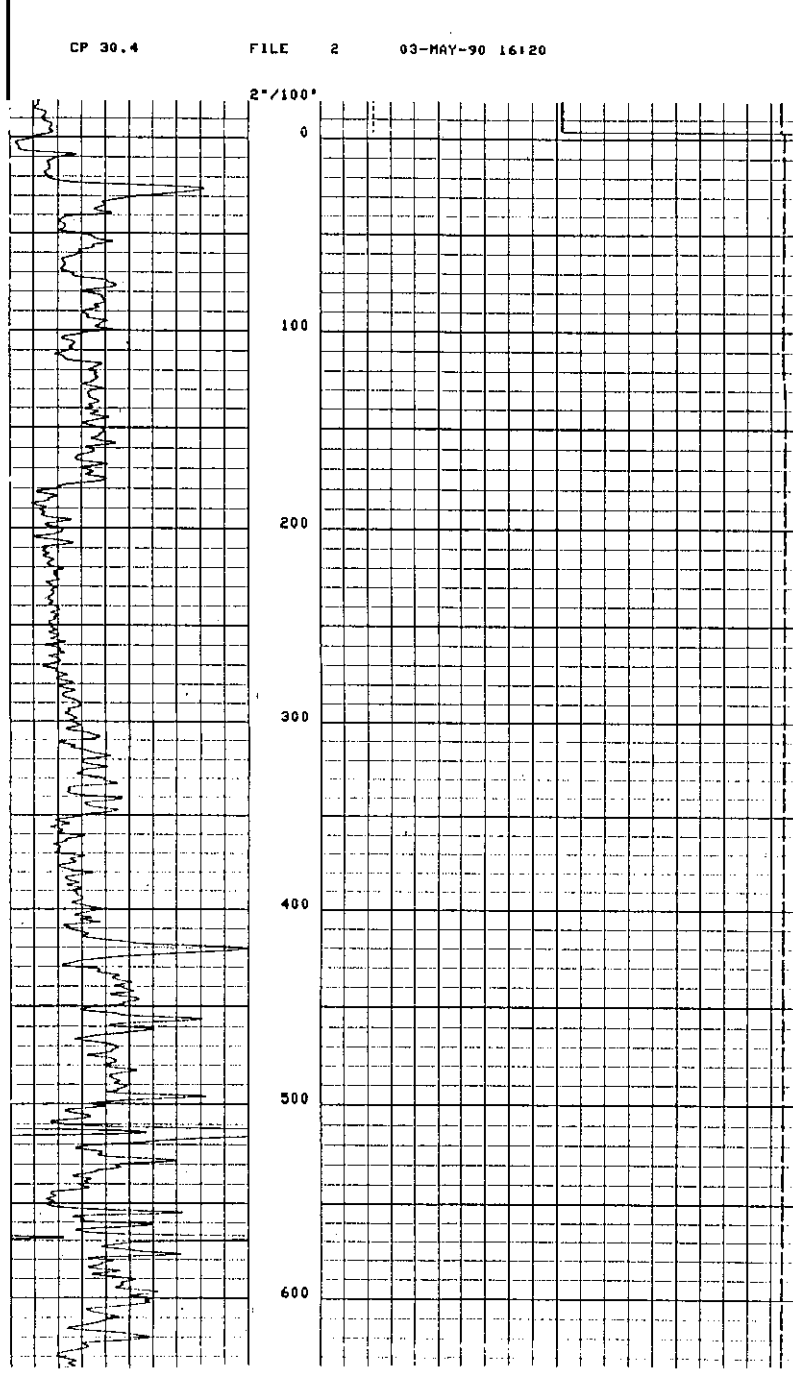
ALL INTERPRETATIONS ARE OPINIONS BASED ON INFERENCES FROM ELECTRICAL OR OTHER MEASUREMENTS AND WE CANNOT, AND DO NOT GUARANTEE THE ACCURACY OR CORRECTNESS OF ANY INTERPRETATIONS, AND WE SHALL NOT, EXCEPT IN THE CASE OF GROSS OR WILLFUL NEGLIGENCE ON OUR PART, BE LIABLE OR RESPONSIBLE FOR ANY LOSS, COSTS, DAMAGES OR EXPENSES INCURRED OR SUSTAINED BY ANYONE RESULTING FROM ANY INTERPRETATION MADE BY ANY OF OUR OFFICERS, AGENTS OR EMPLOYEES. THESE INTERPRETATIONS ARE ALSO SUBJECT TO OUR GENERAL TERMS AND CONDITIONS AS SET OUT IN OUR CURRENT PRICE SCHEDULE.

CP 30.4 FILE 3 03-MAY-90 16:20

TEMSCLB >	10000.	0.0
PS. (X) >	10.000	30.000

CP 30.4	FILE 3	03-MAY-90 16:20
		TENS(LR) >
		10000. 0.0
	10.000	RS (IN) 30.000
	10.000	C2 (IN) 30.000
GR (GAPI)	150.00	C1 (IN) 30.000
0.0		10.000 30.000

#352, W-7474, Felda Quad



GL-40' No cutting samples available.

40-130' Siltstone, grn gray, vfg sdy, phos, sltly calc, clayey; 10-40% claystone, grn gray, calc, silty.

130-160' Qz sand, vf-f-m-c & common pebbles, ang-rnd; minor phos grns & rare pebbles; some Ls & claystone.

160-190' Siltstone, grn gray, calc, clayey, sltly sdy & phos; some Ls(wh, fos, mollusks) & claystone.

190-310' Loose Qz sand, silt size-vf-f-some coarse; minor phos grs & grns; 10-40% Ls & mollusk shell frags.

310-350' Loose Qz sand, f-m-c, most is med & coarse; 2-4% loose phos grs & grns; minor Ls/mollusks, Ss, dolosil

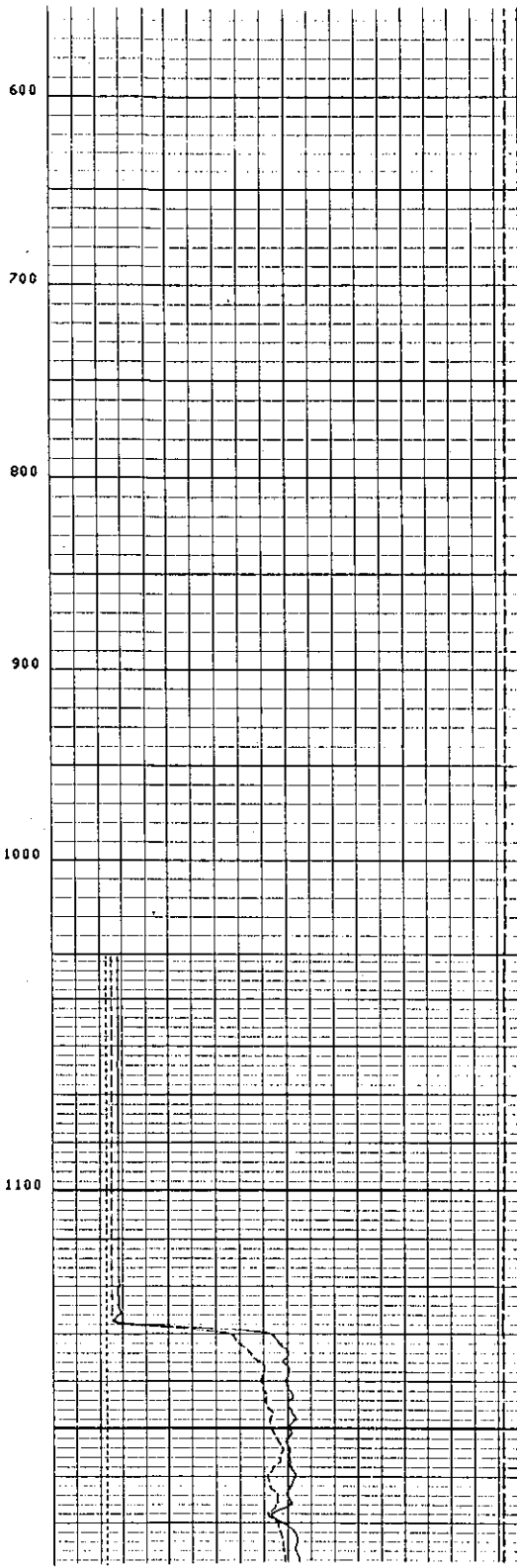
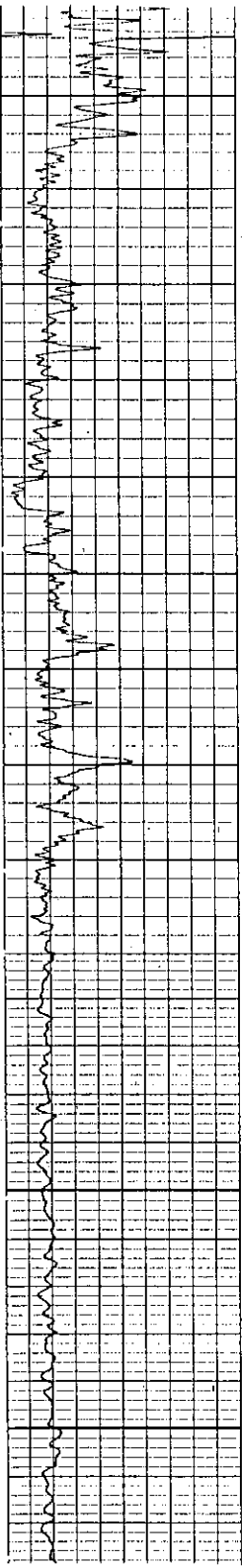
350-380' Ls, wh, sdy, phos, fos, com-numerous mollusks, some cheilostome & encrusting bryozoa, crab claws.

380-430' Ls/fos as above, less common cheilostome/encrusting bryozoa.

430-550' Ls, yel gray-wh, sdy, phos, some-common cheilostome/encrusting bryozoa, com-num mollusks, some gastropods, echinoid spines; minor loose Qz sand, phos grs/grns, claystone & siltstone; trace Dol.

550-610' Dol, yel gray, vf-f xln, anhedral/subhedral, some is phos, some is vuggy, cheilostome bryozoa not replaced by Dol; ±50% dolomitic marl.

#352, W-7474, Felda Quad



610-640' Ls, wh-v lt gray, fg & micritic, sltly phos-phos, sltly fg sdy, some to common gastropods, mollusks.

640-810' Ls, wh, v pale orange, fg, sltly sdy to sdy(vf-f-some med, sub-ang to subrnd), minor phos grs, a few mollusks, rare forams, rarely wkly dolomitized by fine euhedral/subhedral, gray orange xls; locally fos hash Ls; locally minor Ss & Dol; ±50% marl @ 730' to 810'.

810-880' Ss & Ls, v lt gray & v pale orange, rare to no phos, Ss is calc & Ls is sdy to v sdy, few fossils; locally minor Dol, f xln, anhed/subhed.

880-1000' Ls, v lt gray to yel gray, sdy, phos, fg, fos, mollusks, crab claws; up to 30% fos hash, porous, Ls, cemented by f drusy calcite; common coarsely xln calcite 940'-1000'.

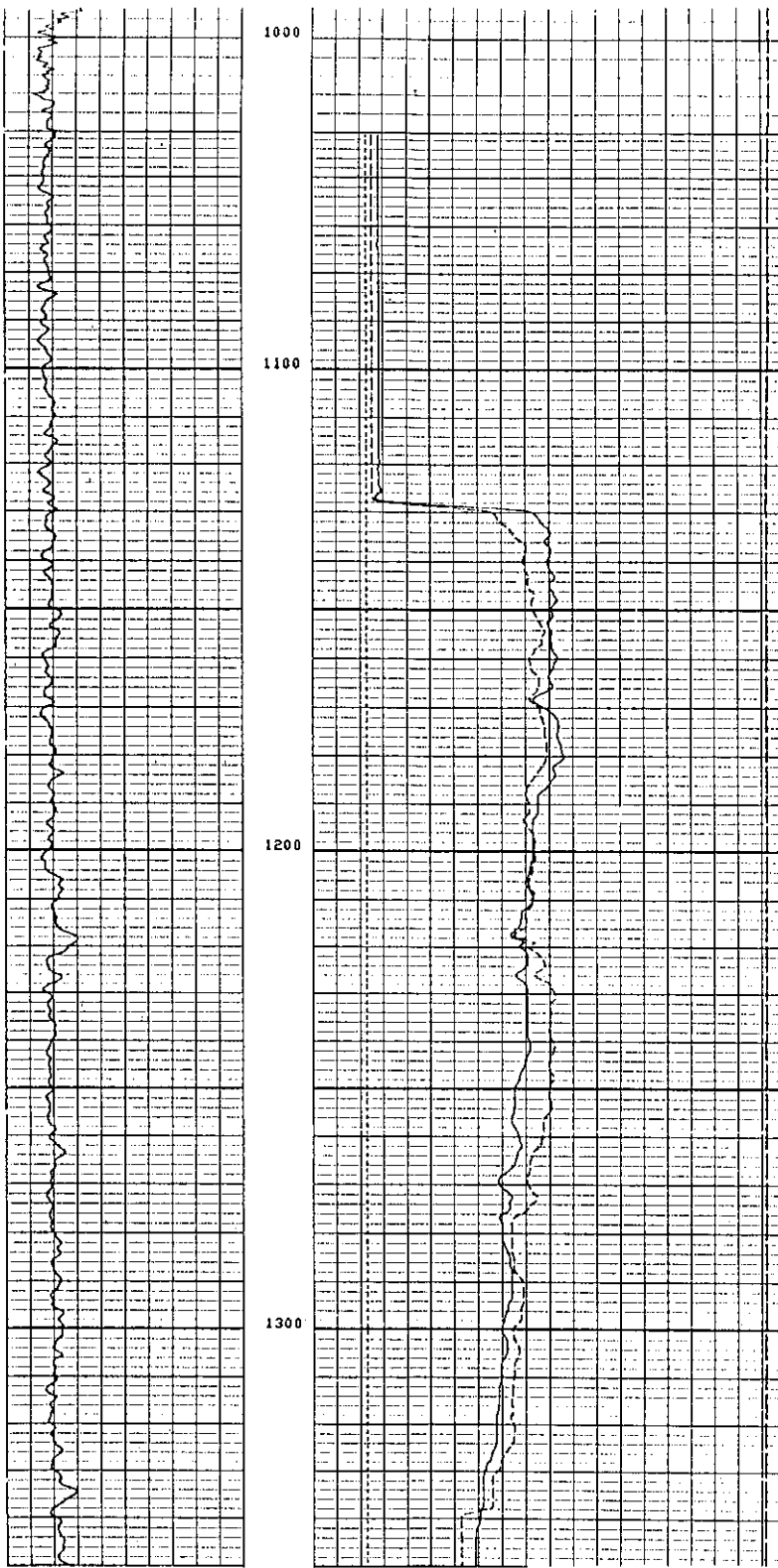
1000-1035' Dol, yel gray, vf xln, anhed/subhedral, rare minute phos grs, no sand, minor Ls, vpo, microgranular, v fos.

1035-1060' Ls, vpo-wh, microgranular, some granular, v fos, some peloids & forams, no sand, no phos; some Dol as above.

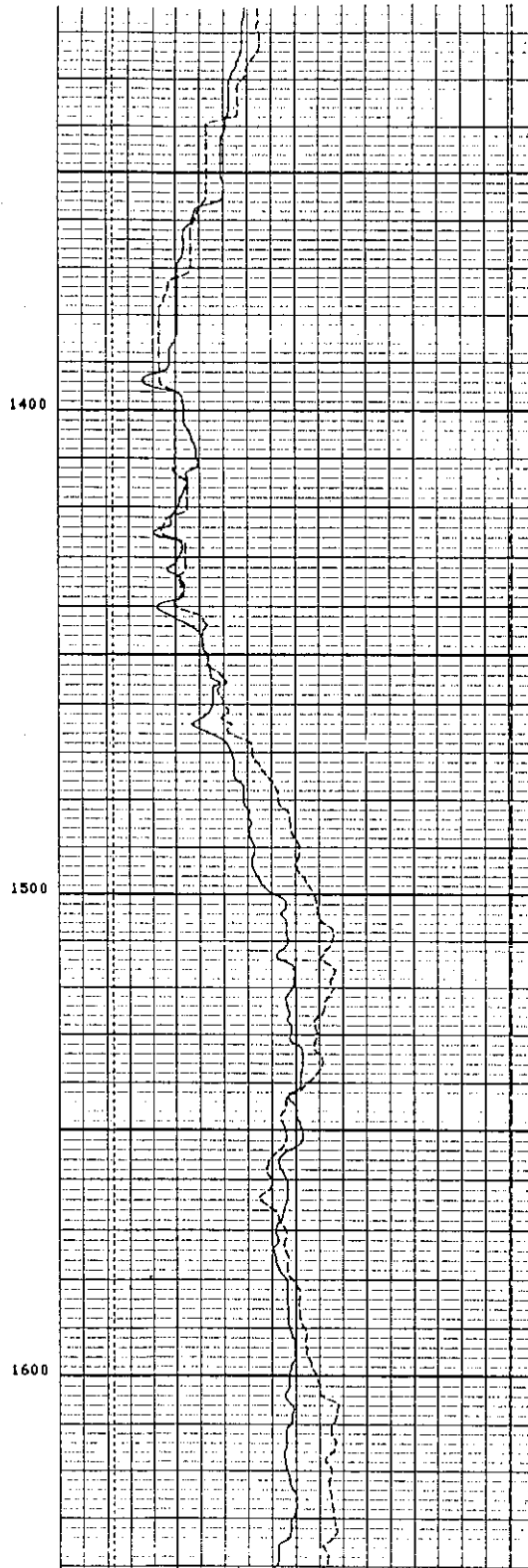
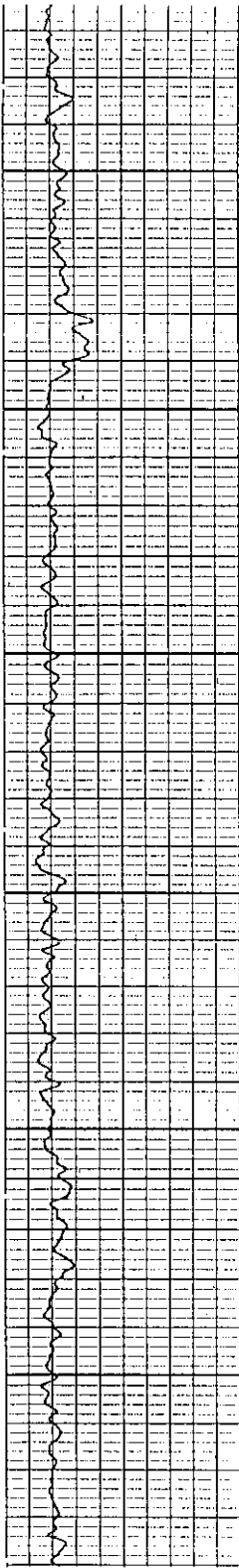
1060-1090' Ls as above, now stgly rexal, calcite commonly replaces some fos & Ls matrix, common Lepidocyclina, some are large & saddle shape, some small, thin & flat, a few red algae fragments.

[Last cutting sample available @ 1060-1090' BGL. Depths on this lith log are given in feet below ground level]

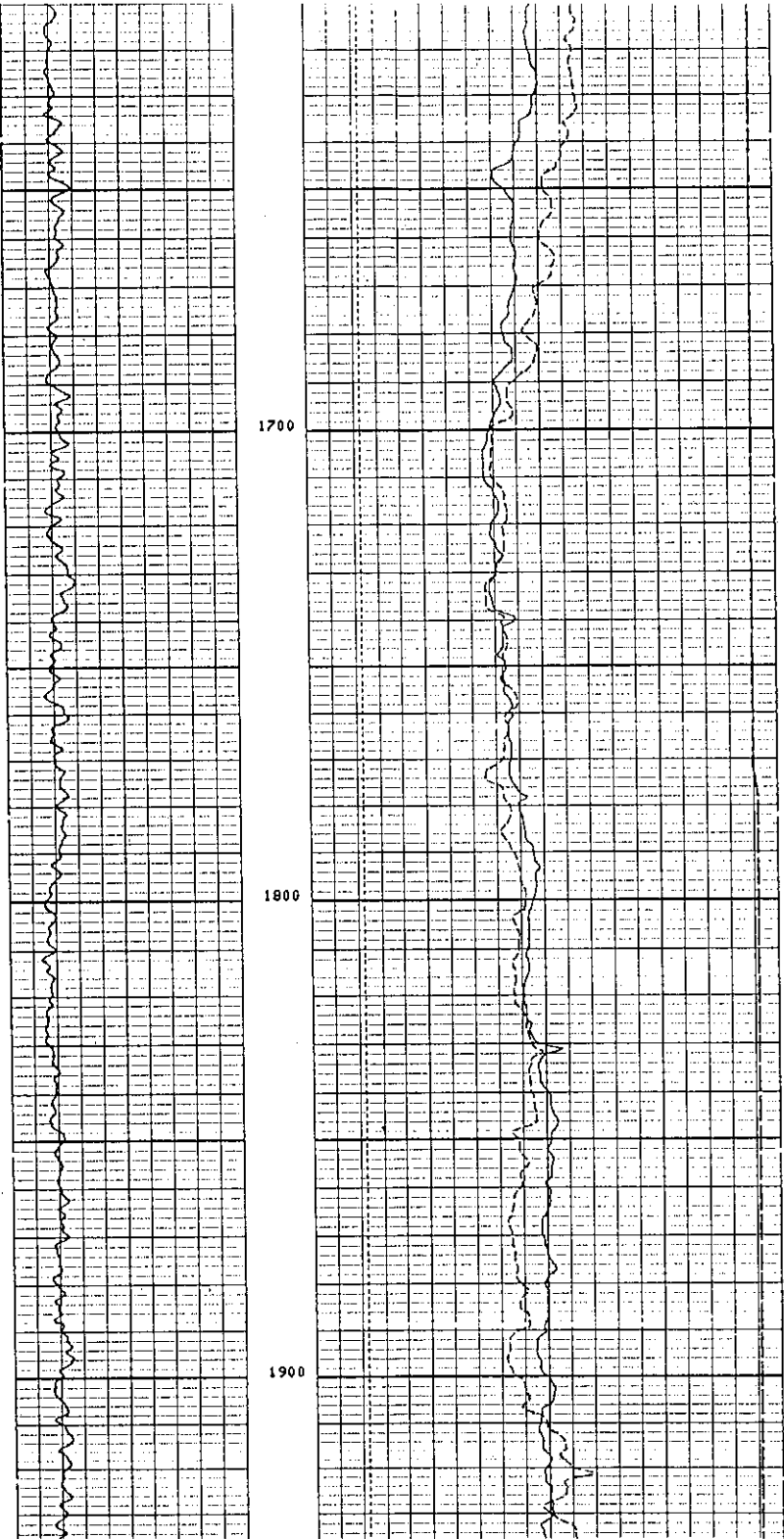
#352, W-7474, Felda Quad

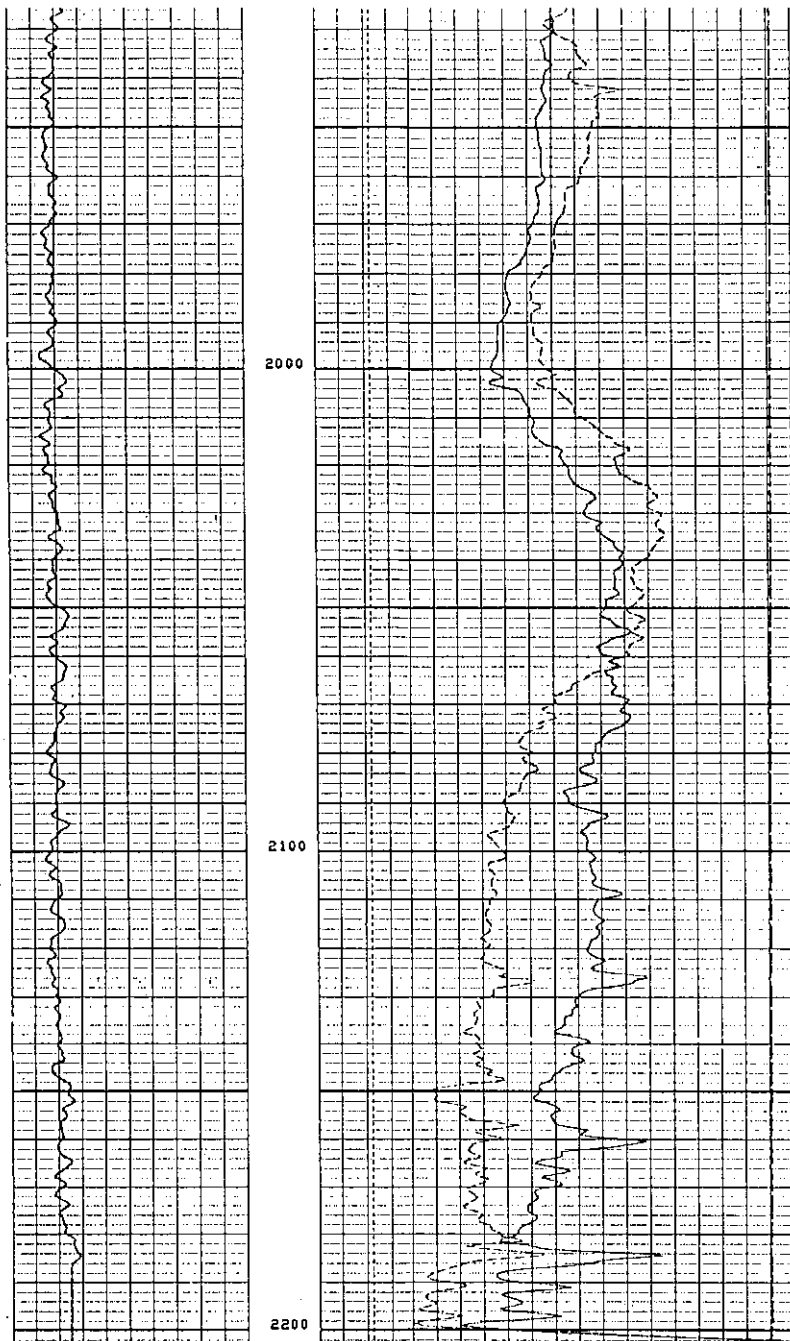


#352, W-7474, Felda Quad



#352, W-7474, Felda Quad





CP 30.4		FILE 2	03-MAY-90 15:49
GR (GAPI)		TENS(LB)	
0.0	150.00	10000.	0.0
		PS (IN)	30.000
		CP (IN)	30.000
		10.000	30.000
		10.000	30.000

352
Schlumberger
X - Y CALIPER



fm z/c

COMPANY: EXXON COMPANY U.S.A.
 WELL: SONOCCO FIELD UNIT 5-1
 FIELD: FIELDS
 COUNTY: COLLIER
 STATE: FLORIDA
 LOCATION: 1025' FEL, 1027' FN L
 ECL: 5 TYP: 46 S RGE: 29 E
 ERMANENT DATUM: BHT
 -EV. OF PERM. DATUM: 36.2
 LOG MEASURED FROM: HYDRIL
 26' ABOVE PERM. DATUM
 RLG. MEASURED FROM: K.B.
 ELEVATIONS-
 KBI
 DFI: 53.1'
 GLI: 32.2'
 ATE: 3 MAY 90
 JN NO:

OTHER SERVICES-

PROGRAM
 TAPE NO:
 30.4
 SERVICE
 ORDER NO:
 399129

TYPE FLUID IN HOLE:
 DENSITY:
 VISCOSITY:
 PH:
 FLUID LOSS:
 SOURCE OF SAMPLE:
 RM: AT
 RMF: AT
 RMC: AT
 SOURCE RMF/RMC: /
 RM AT BHT: AT
 RMF AT BHT: AT
 RMC AT BHT: AT
 TIME CIRC. STOPPED:
 TIME LOGGER ON BTM.:
 MAX. REC. TEMP:
 LOGGING UNIT NO: 8906
 LOGGING UNIT LOC: FT. MYERS
 RECORDED BY:
 WITNESSED BY: BUCK

REMARKS:

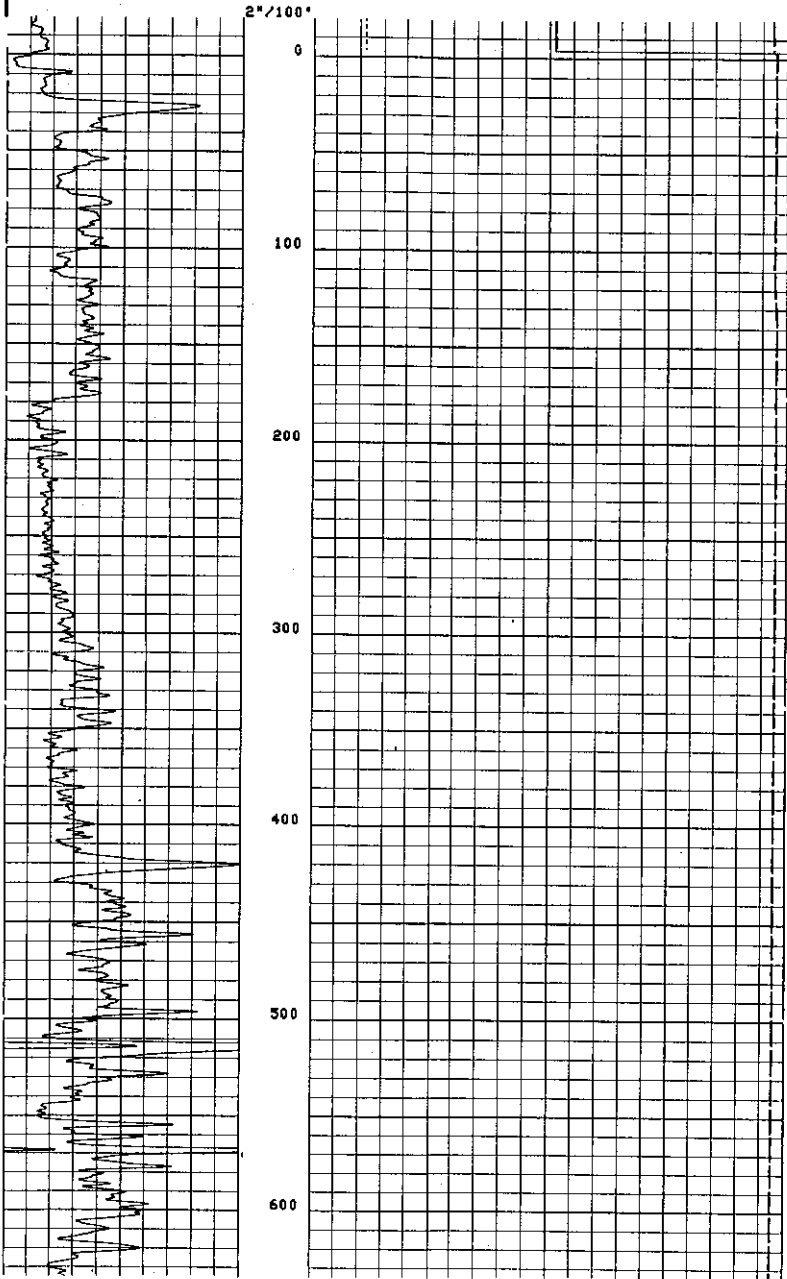
EQUIPMENT NUMBERS-

ALL INTERPRETATIONS ARE OPINIONS BASED ON INFERENCES FROM ELECTRICAL OR
 OTHER MEASUREMENTS AND WE CANNOT, AND DO NOT GUARANTEE THE ACCURACY OR
 CORRECTNESS OF ANY INTERPRETATIONS, AND WE SHALL NOT, EXCEPT IN THE CASE
 OF GROSS OR WILLFUL NEGLIGENCE ON OUR PART, BE LIABLE OR RESPONSIBLE FOR
 ANY LOSS, COSTS, DAMAGES OR EXPENSES INCURRED OR SUSTAINED BY ANYONE
 RESULTING FROM ANY INTERPRETATION MADE BY ANY OF OUR OFFICERS, AGENTS OR
 EMPLOYEES. THESE INTERPRETATIONS ARE ALSO SUBJECT TO OUR GENERAL TERMS
 AND CONDITIONS AS SET OUT IN OUR CURRENT PRICE SCHEDULE.

CP 30.4 FILE 3 03-MAY-90 16:20

TENS(LB) 0.0
 PS (IN)

			TENS(LB)	
		10000.		0.0
		10.000	RS (IN)	30.000
		10.000	CS (IN)	30.000
		10.000	CI (IN)	30.000
GR (GAPI)	0.0	150.00		



352
Schlumberger
X - Y CALIPER



EM 272

COMPANY: EXXON COMPANY U.S.A.
 WELL: SUNOCO FIELD UNIT 5-1
 FIELD: FIELD
 COUNTY: COLLIER
 STATE: FLORIDA
 LOCATION: 1025 FEL, W 71 FN L
 ECI: 5 TAP: 46 S RGE: 29 E
 ERHAMENT DATUM: BHT
 LEV. OF PERM. DATUM: 36.2
 DG MEASURED FROM: HYDRIL
 16' ABOVE PERM. DATUM
 RLG. MEASURED FROM: K.B.
 DATE: 3 MAY 90
 JN NO:
 ELEVATIONS:-
 KBI
 DFI 53.7'
 GFI 36.2'
 PROGRAM
 TAPE NO:
 30.4
 SERVICE
 ORDER NO:
 399129

TYPE FLUID IN HOLE:
 DENSITY:
 VISCOSITY:
 PH:
 FLUID LOSS:
 SOURCE OF SAMPLE:
 RM: AT
 RMF: AT
 RMC: AT
 SOURCE RMF/RMC: /
 RM AT BHT: AT
 RMF AT BHT: AT
 RMC AT BHT: AT
 TIME CIRC. STOPPED:
 TIME LOGGER ON BTH.:
 MAX. REC. TEMP:
 LOGGING UNIT NO: 8306
 LOGGING UNIT LOC: FT. MYERS
 RECORDED BY:
 WITNESSED BY: BUCK

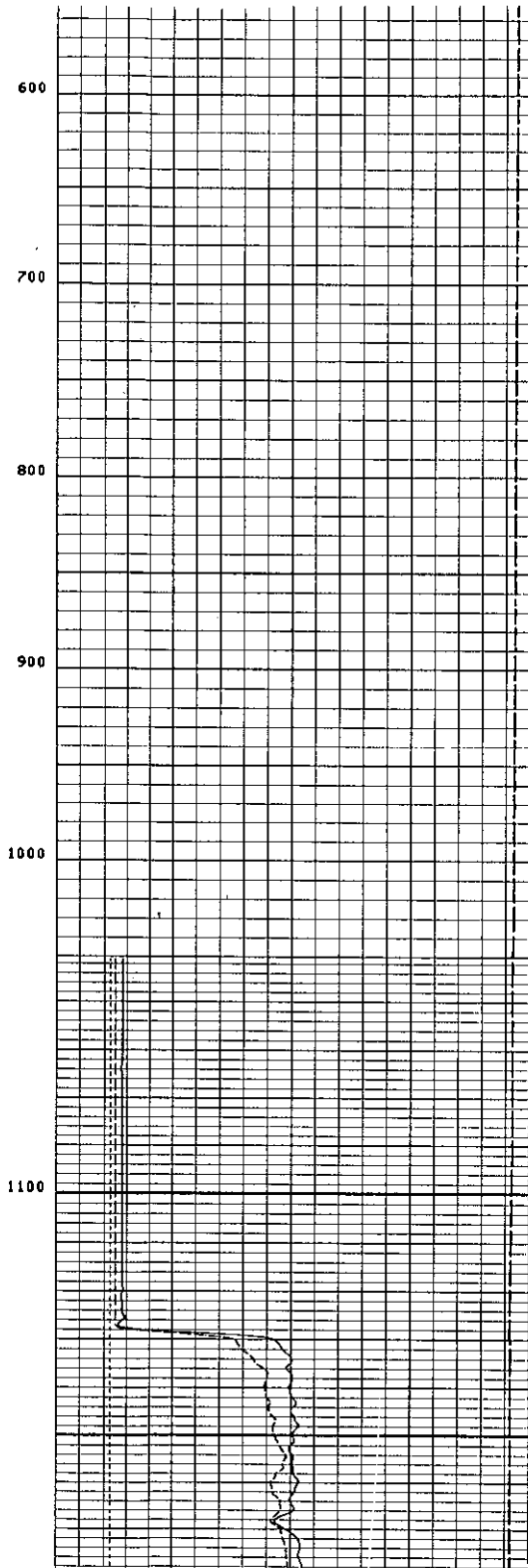
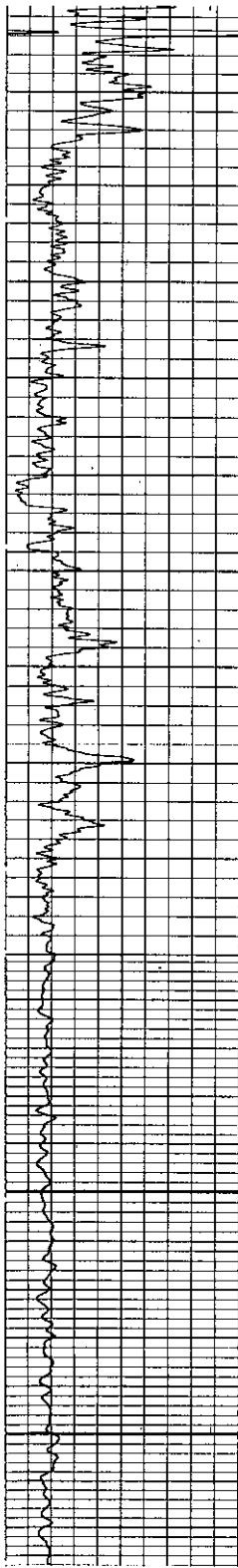
REMARKS:

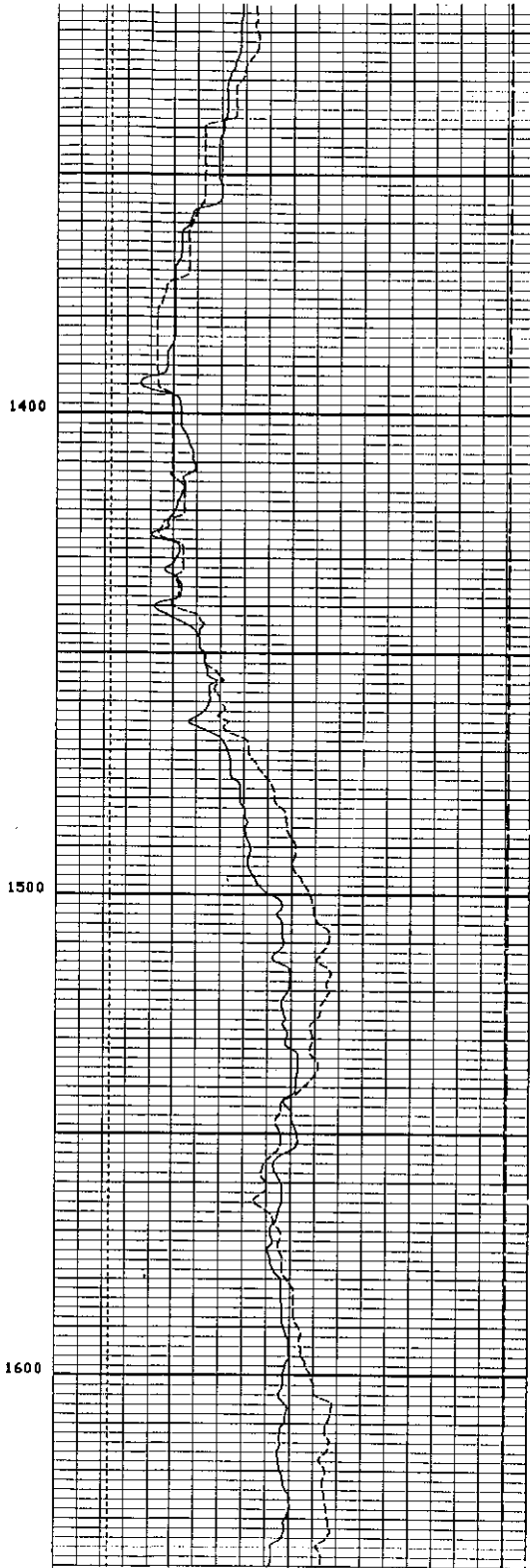
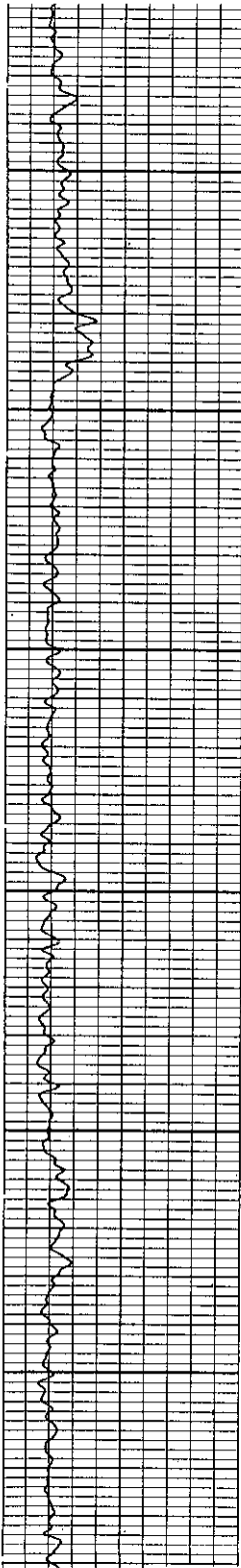
EQUIPMENT NUMBERS-

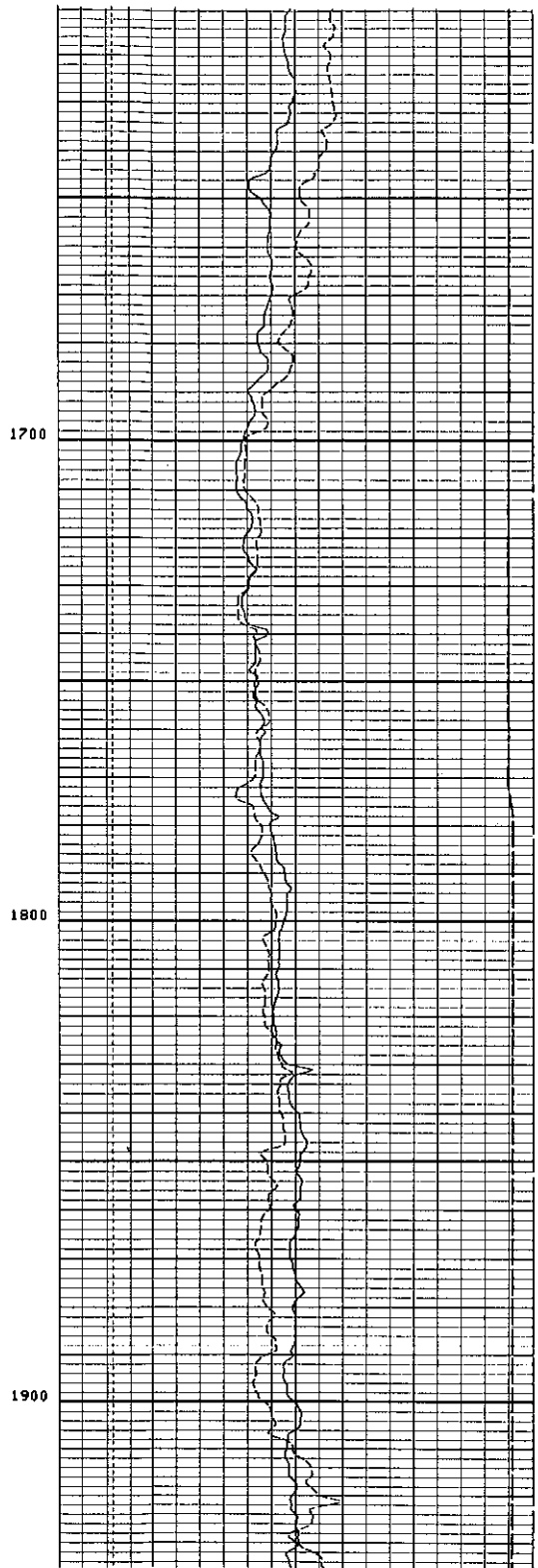
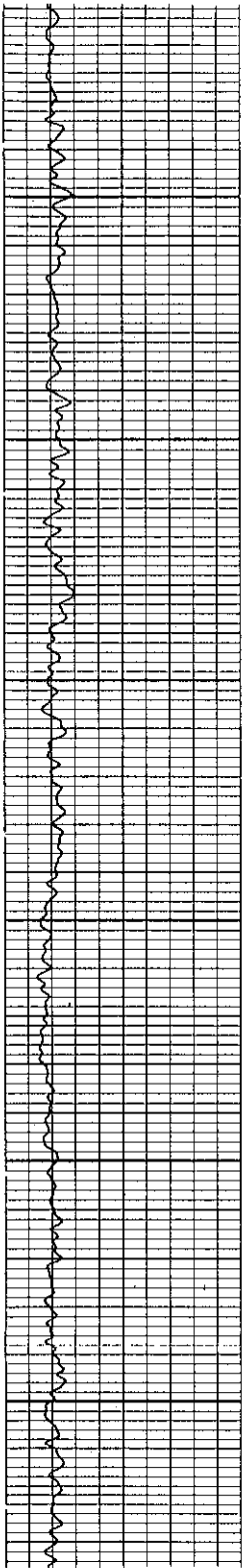
ALL INTERPRETATIONS ARE OPINIONS BASED ON INFERENCE FROM ELECTRICAL OR OTHER MEASUREMENTS AND WE CANNOT, AND DO NOT GUARANTEE THE ACCURACY OR CORRECTNESS OF ANY INTERPRETATIONS, AND WE SHALL NOT, EXCEPT IN THE CASE OF GROSS OR WILLFUL NEGLIGENCE ON OUR PART, BE LIABLE OR RESPONSIBLE FOR ANY LOSS, COSTS, DAMAGES OR EXPENSES INCURRED OR SUSTAINED BY ANYONE RESULTING FROM ANY INTERPRETATION MADE BY ANY OF OUR OFFICERS, AGENTS OR EMPLOYEES. THESE INTERPRETATIONS ARE ALSO SUBJECT TO OUR GENERAL TERMS AND CONDITIONS AS SET OUT IN OUR CURRENT PRICE SCHEDULE.

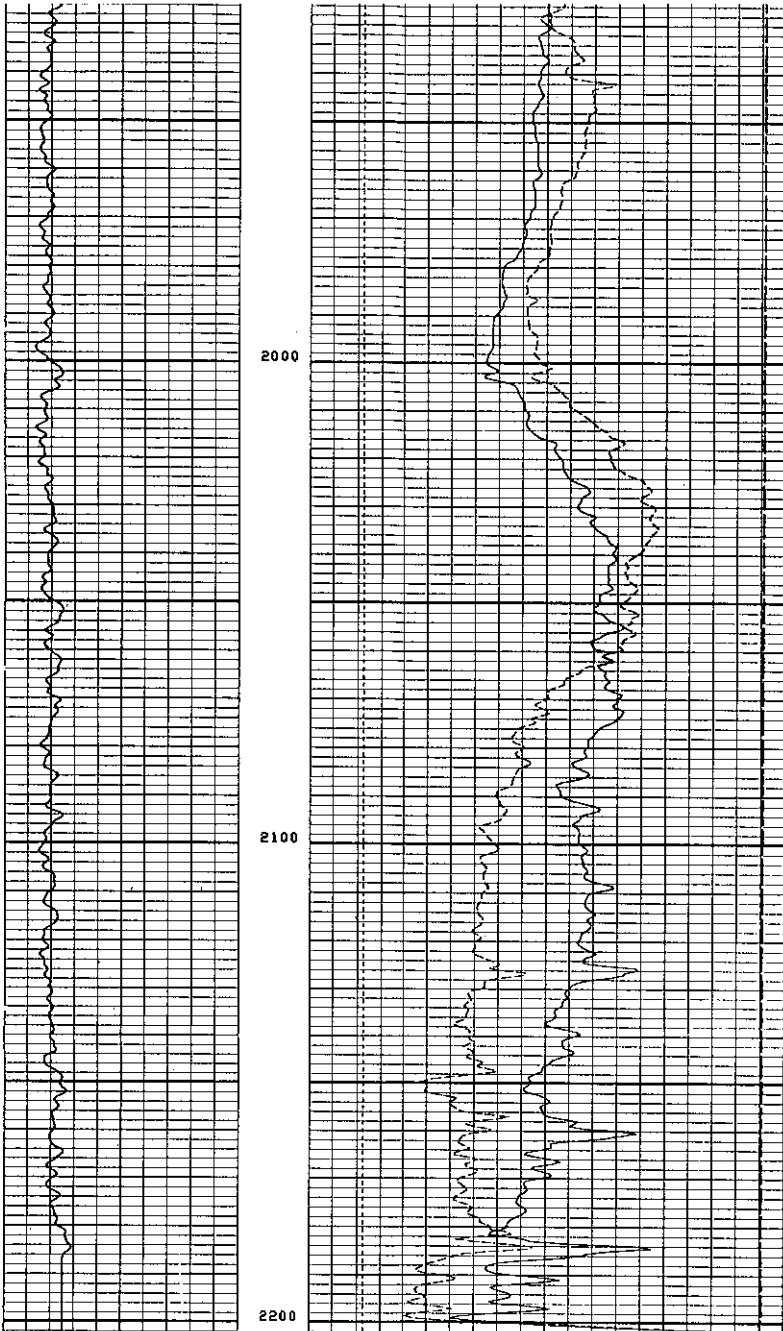
CP 30.4 FILE 3 03-MAY-90 16:20

10000. TENS(LP) 0.0
 BS (IN) 20.000









5"/100"

CP 30.4 FILE 2 03-MAY-90 15:49

		TENS(LB)	0.0
		10000.	
	BS (IN)	10.000	30.000
	CF (IN)	10.000	30.000
GR (GAPI)		0.0	150.00