

Belle Meade Quad

Well No. 663 [W-12,046] Elevation G.L. 3.0' D.F. 19.7' K.B. 20.6'

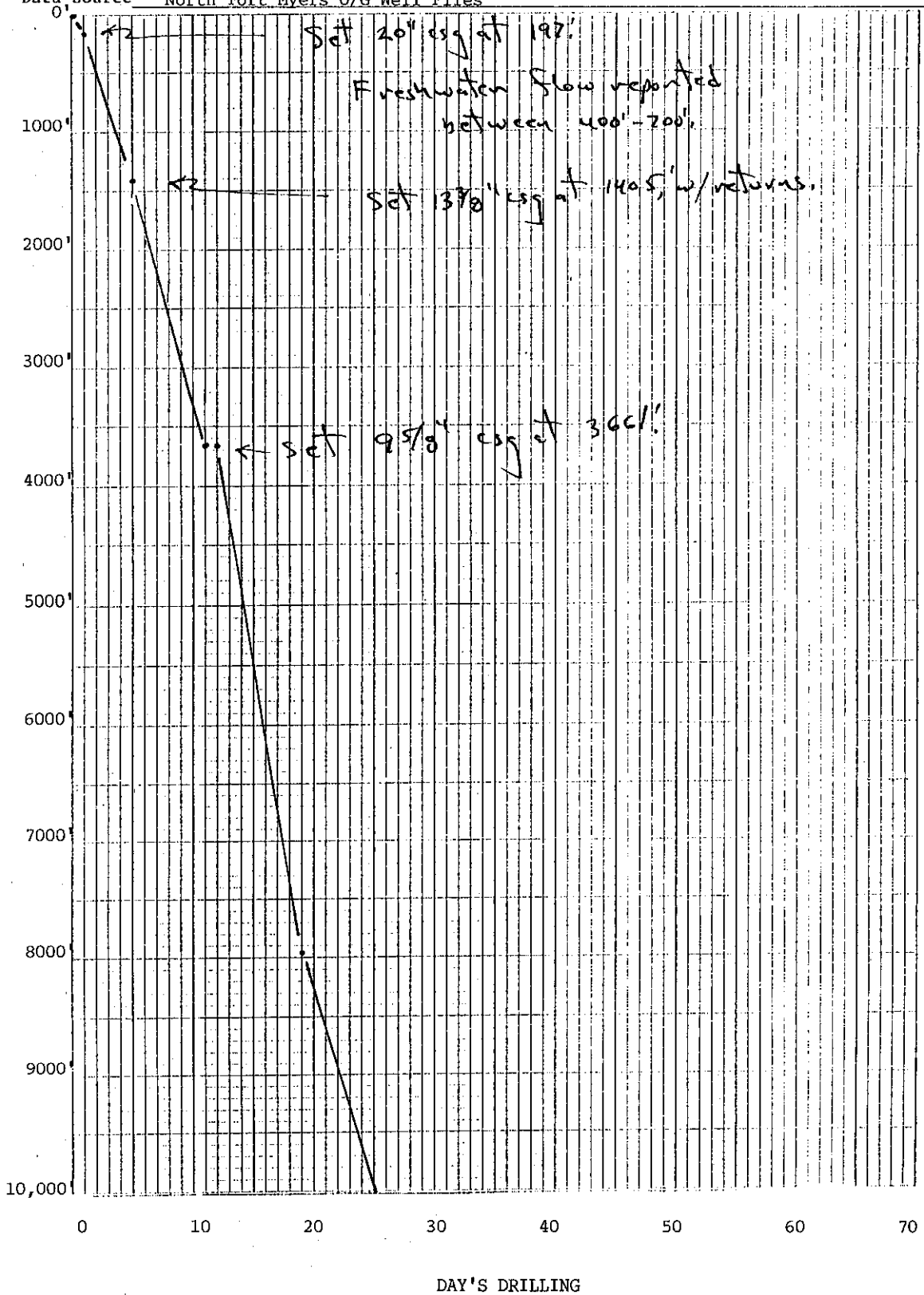
Location 1320' FNL, 1093.5' FEL County Collier

Sec. 24 T 51S R 26E TD 13,803'

Well or Owner's Name Ted Weiner 24-1 Collier/Read Company

Data Source North Fort Myers O/G Well Files

DEPTH BELOW D. F.



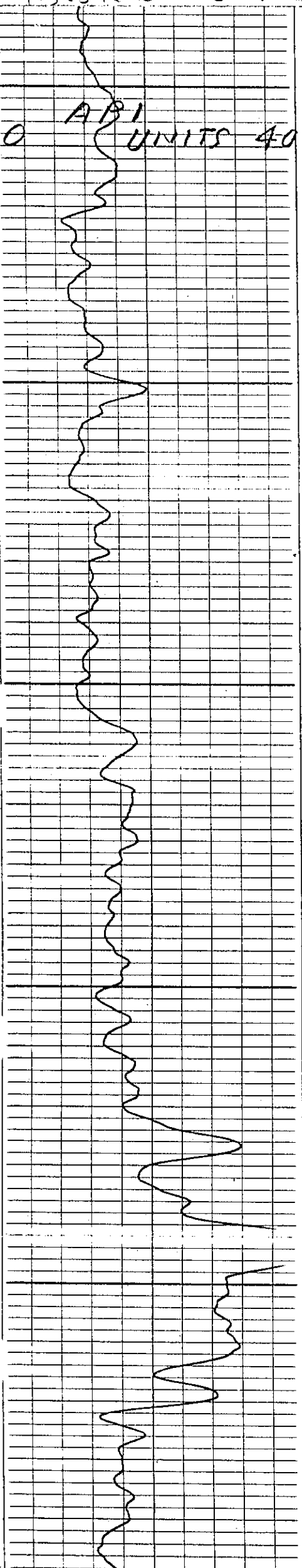
660, 100' ...  
1320' FNL, 1094' FEL. SEC 24  
T51S R26E Collier County

663

K.B. 20.6'

# GAMMA RAY LOG

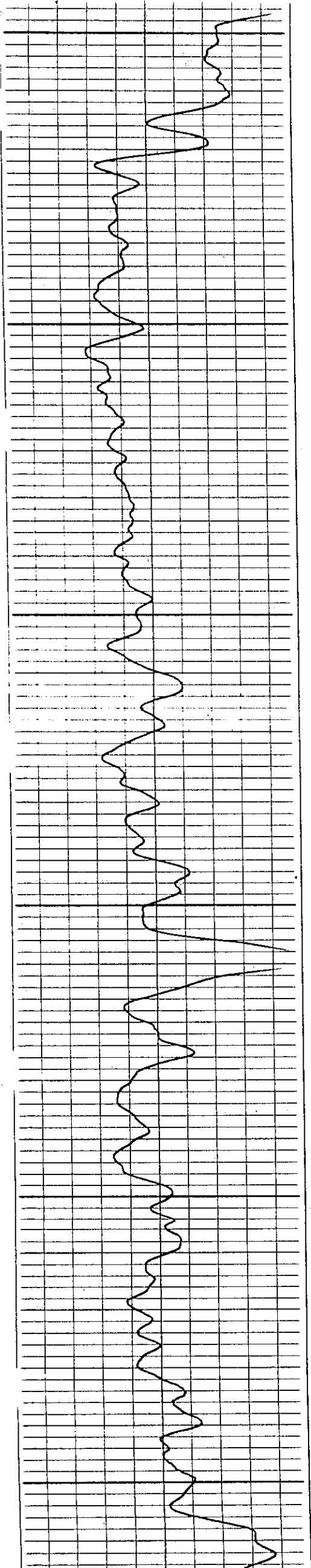
0 API UNITS 40



100

200

300

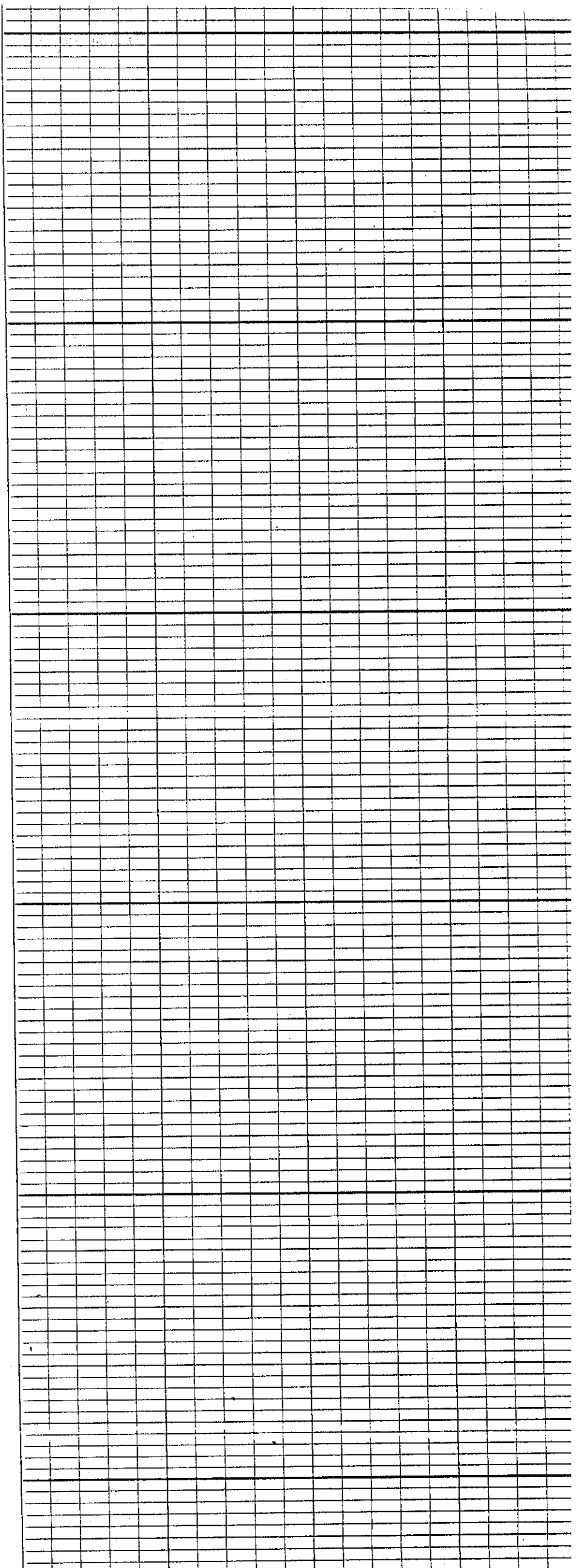


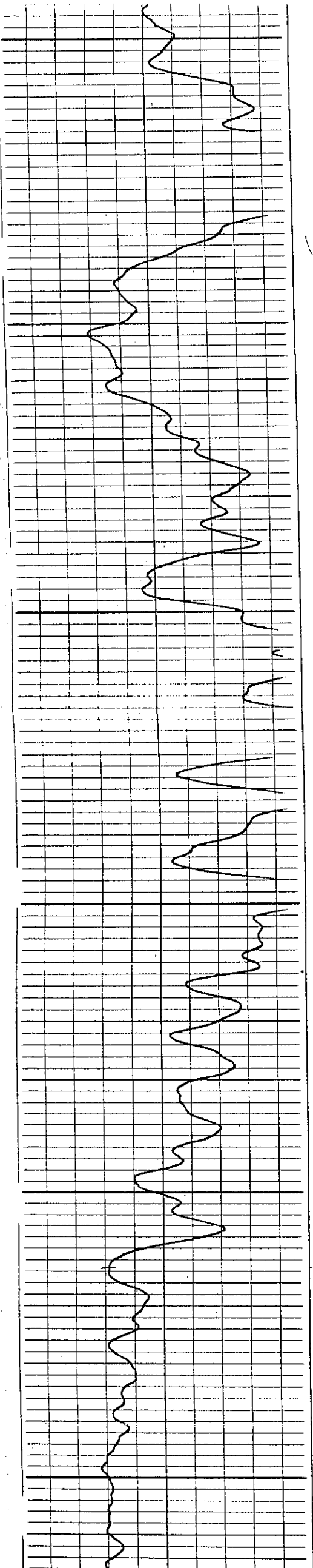
663

300

400

500



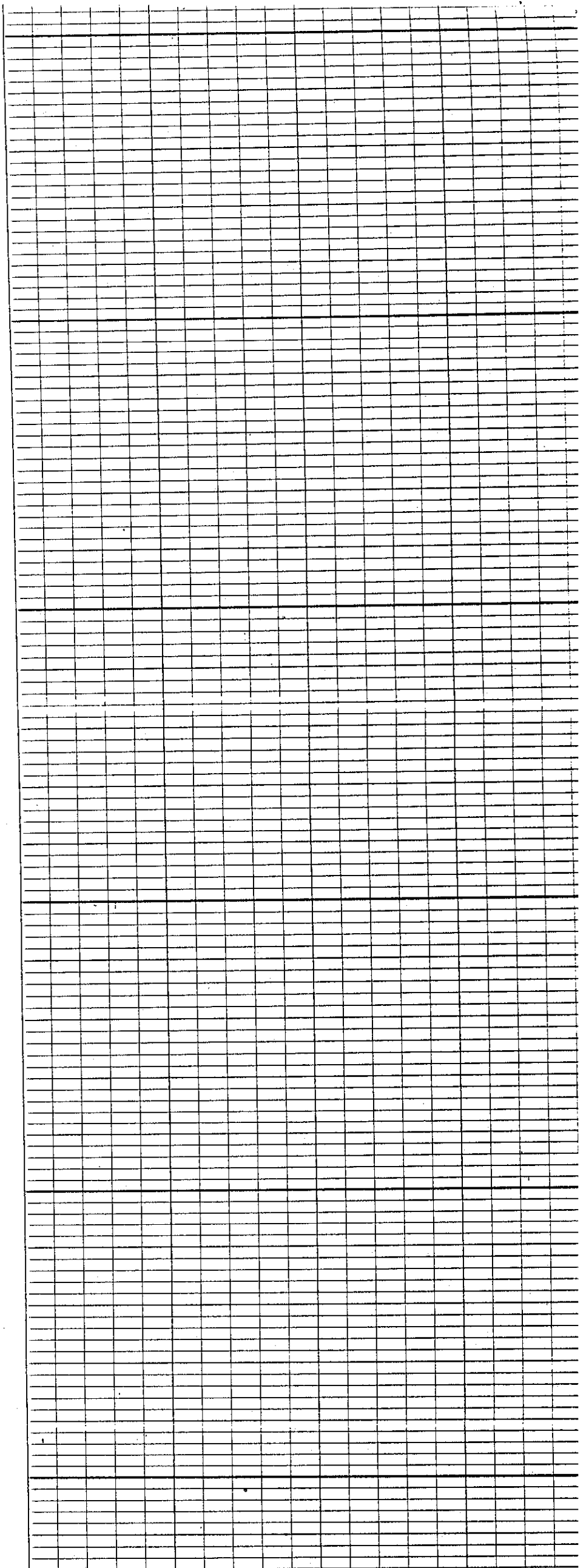


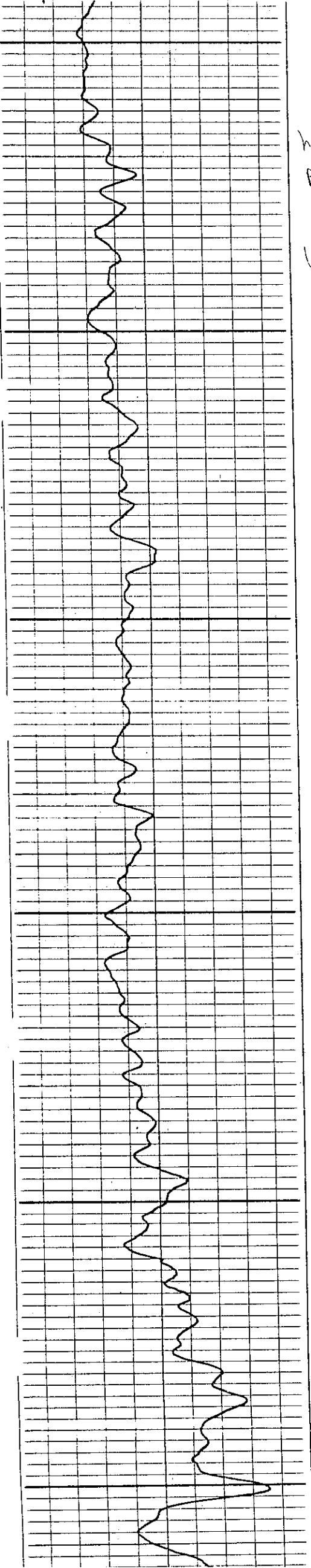
663

600

700

800



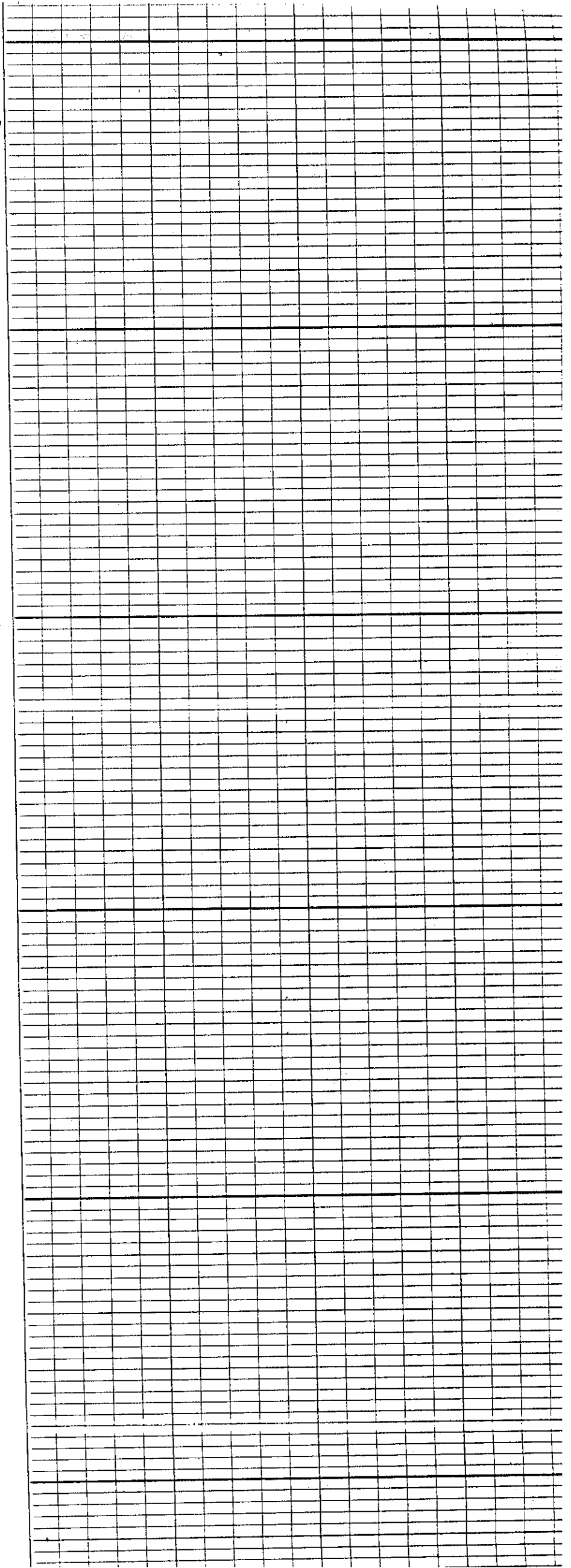


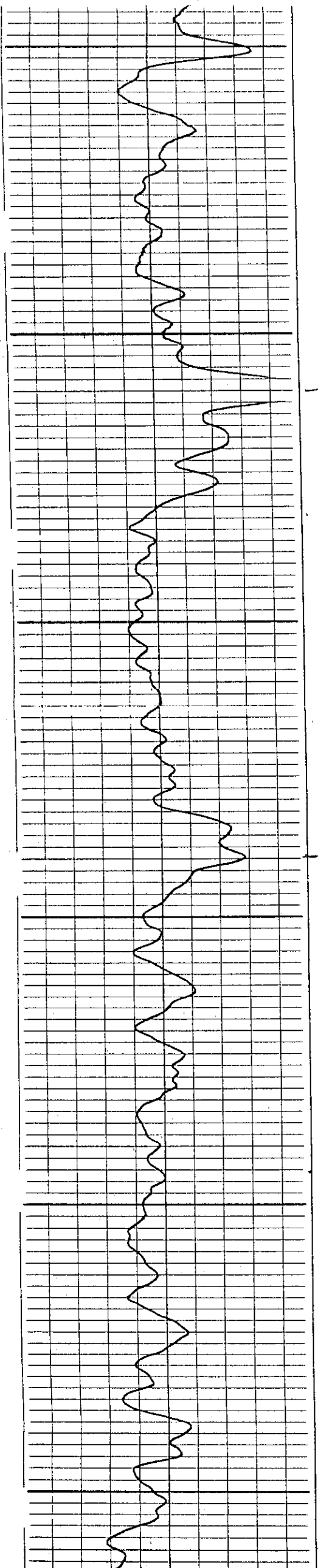
008

higher  
Peak  
in 200A  
well  
6/6/3

006

0001





1100

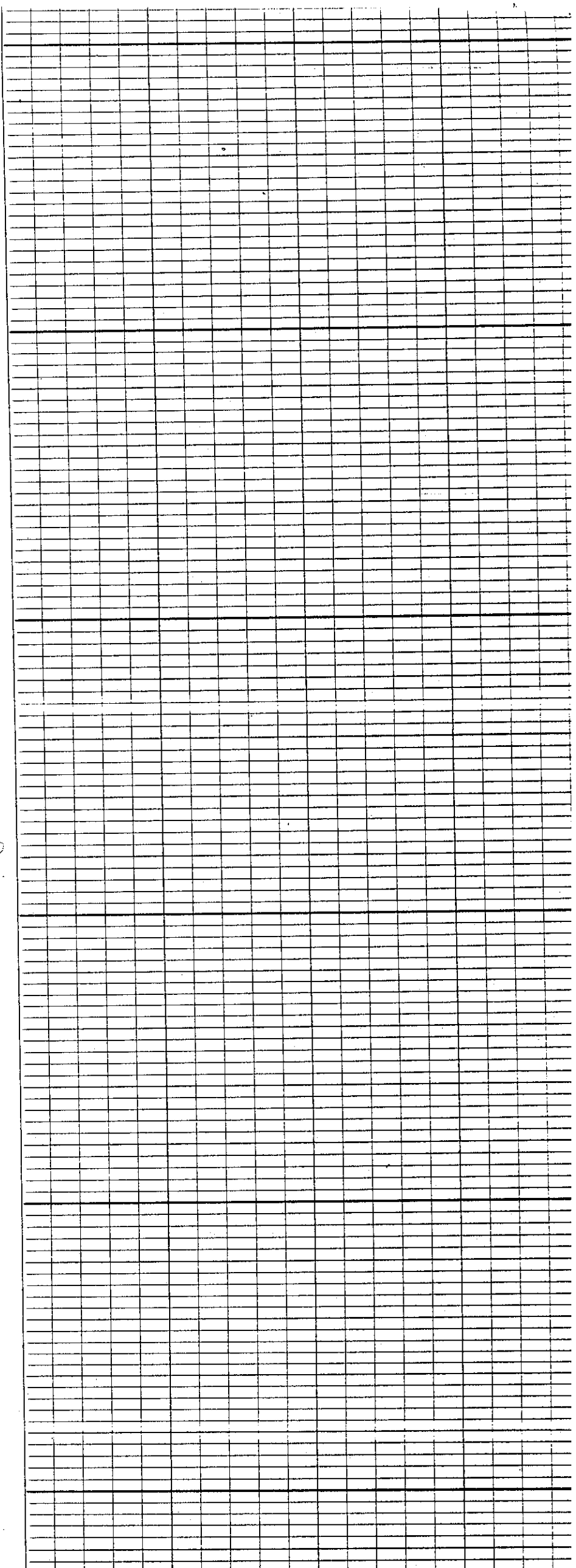
1100

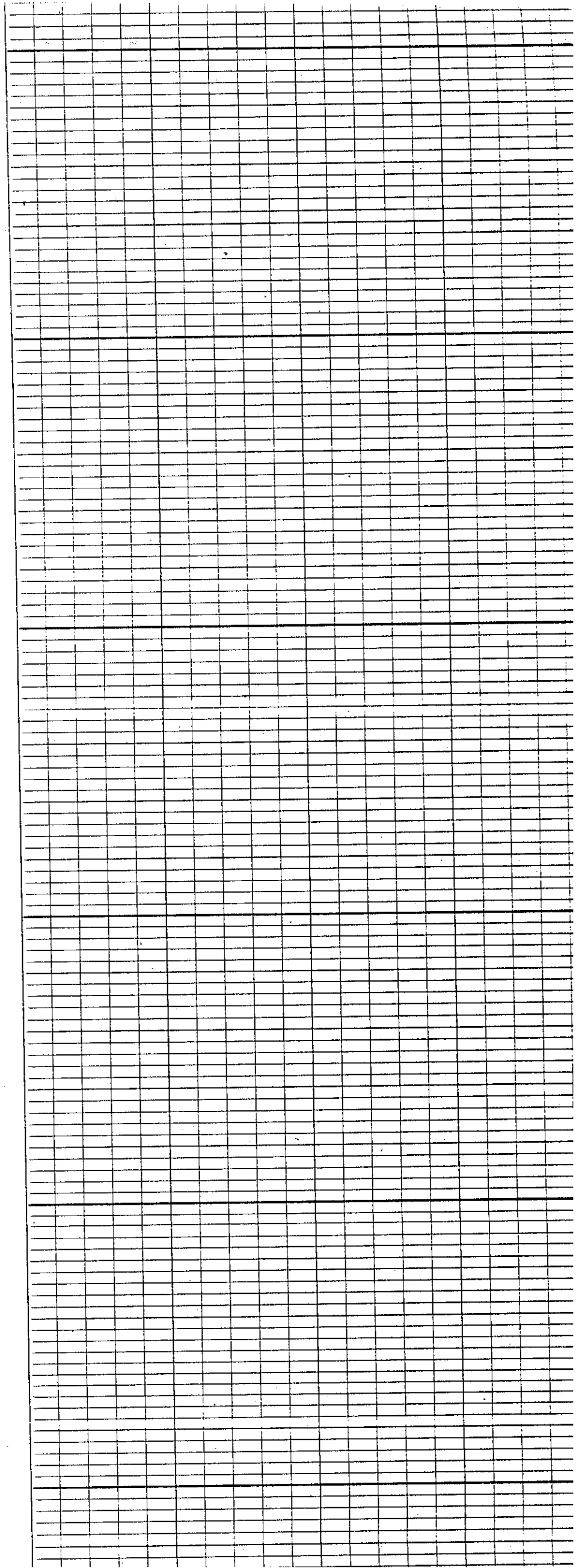
1110  
1100  
1100

1190  
1200

1300

OC



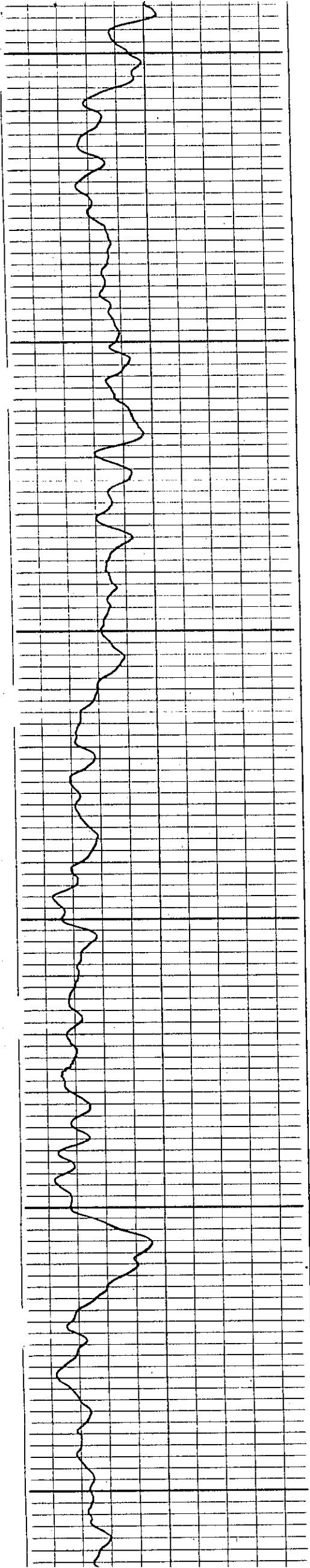


1300

623

1400

1500

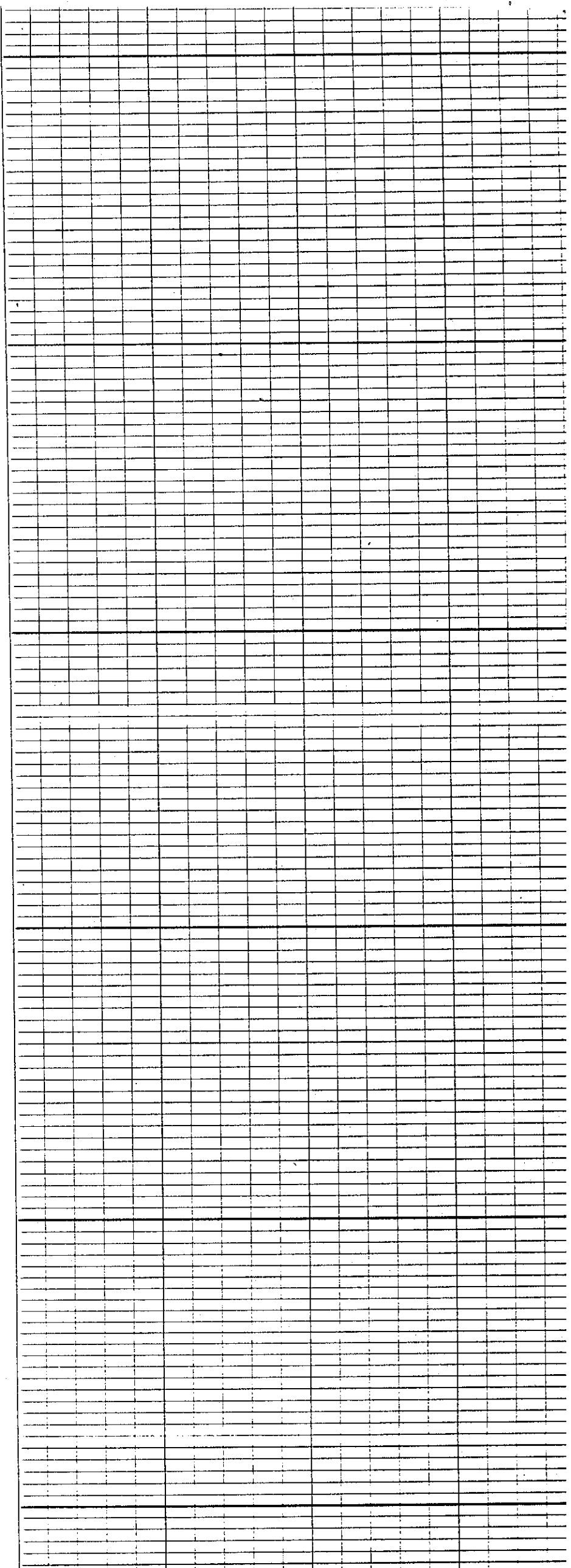
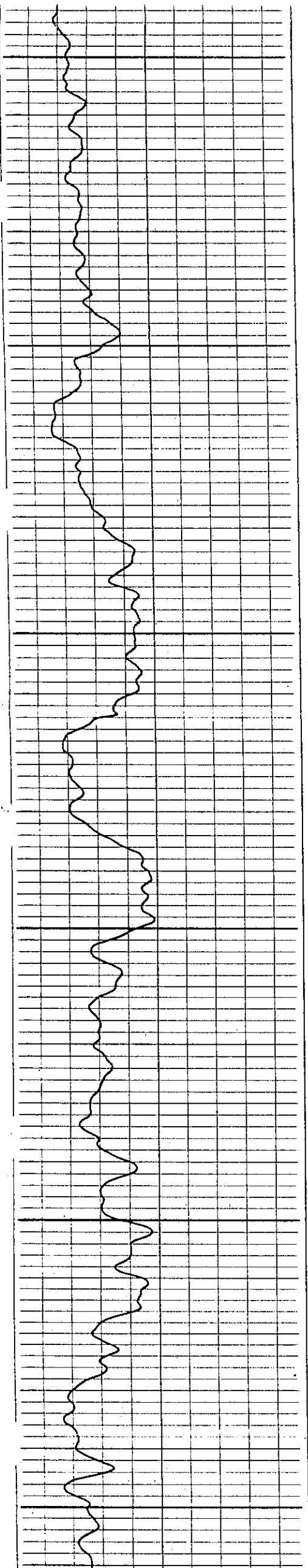


642

1600

1700

1800



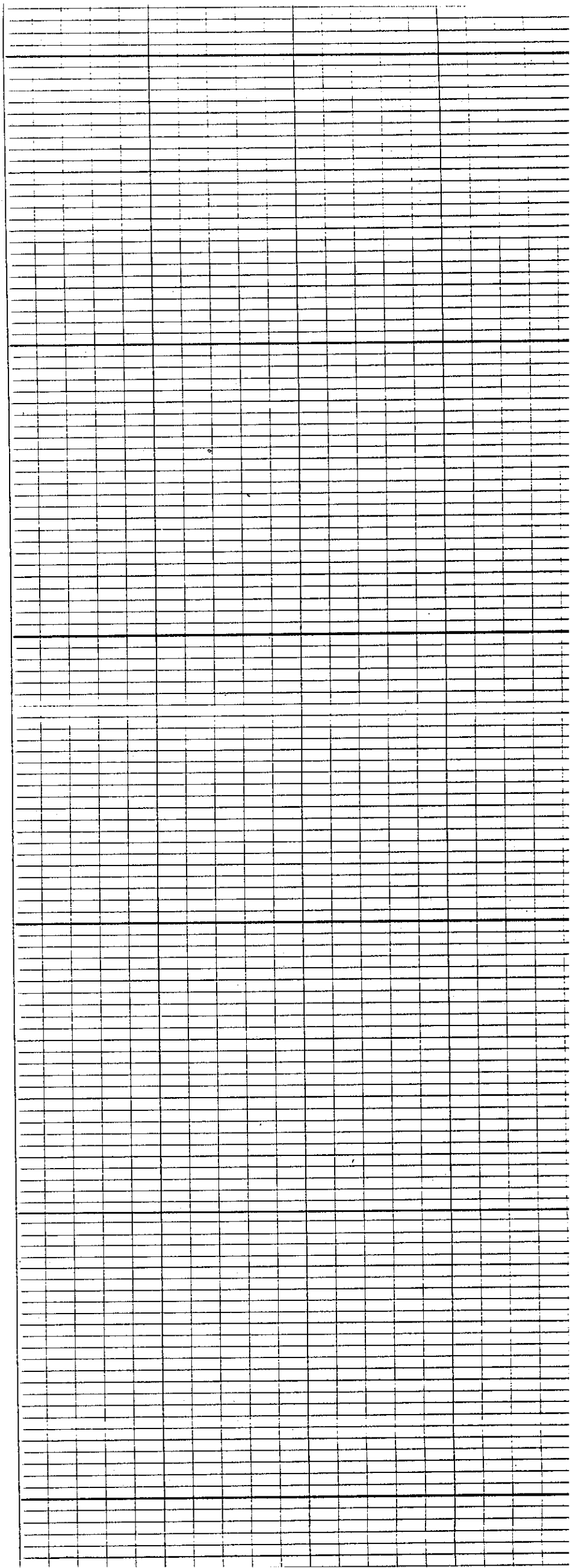
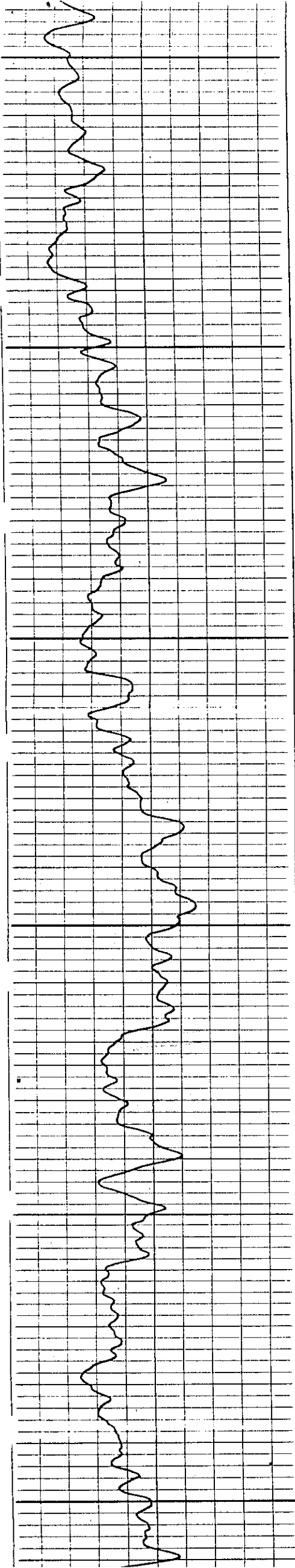


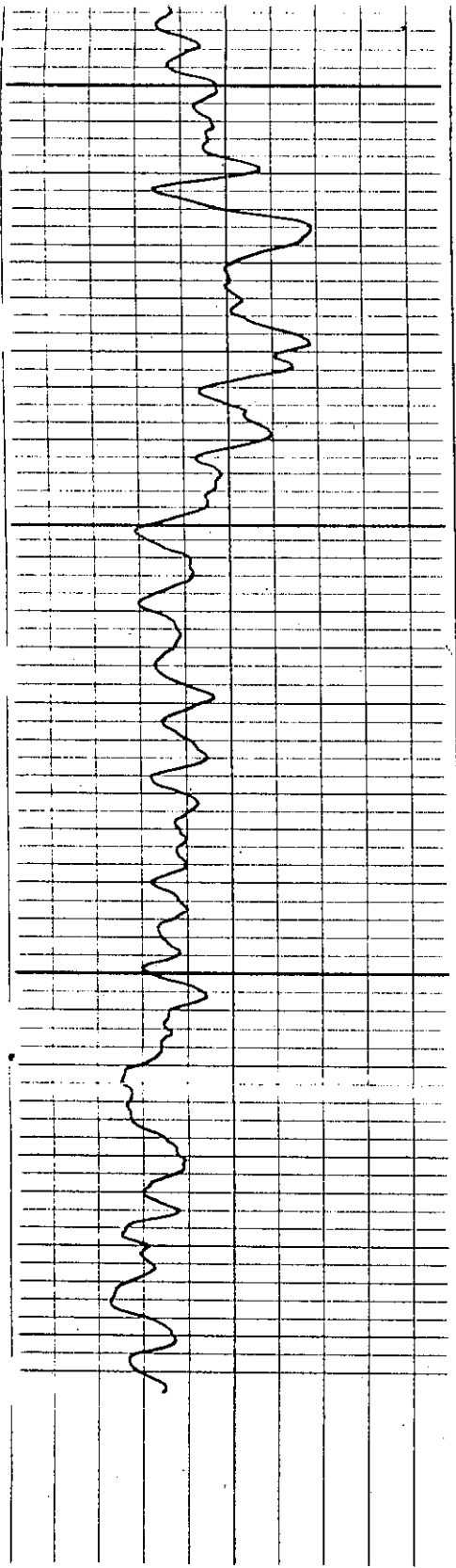
1800

663

1900

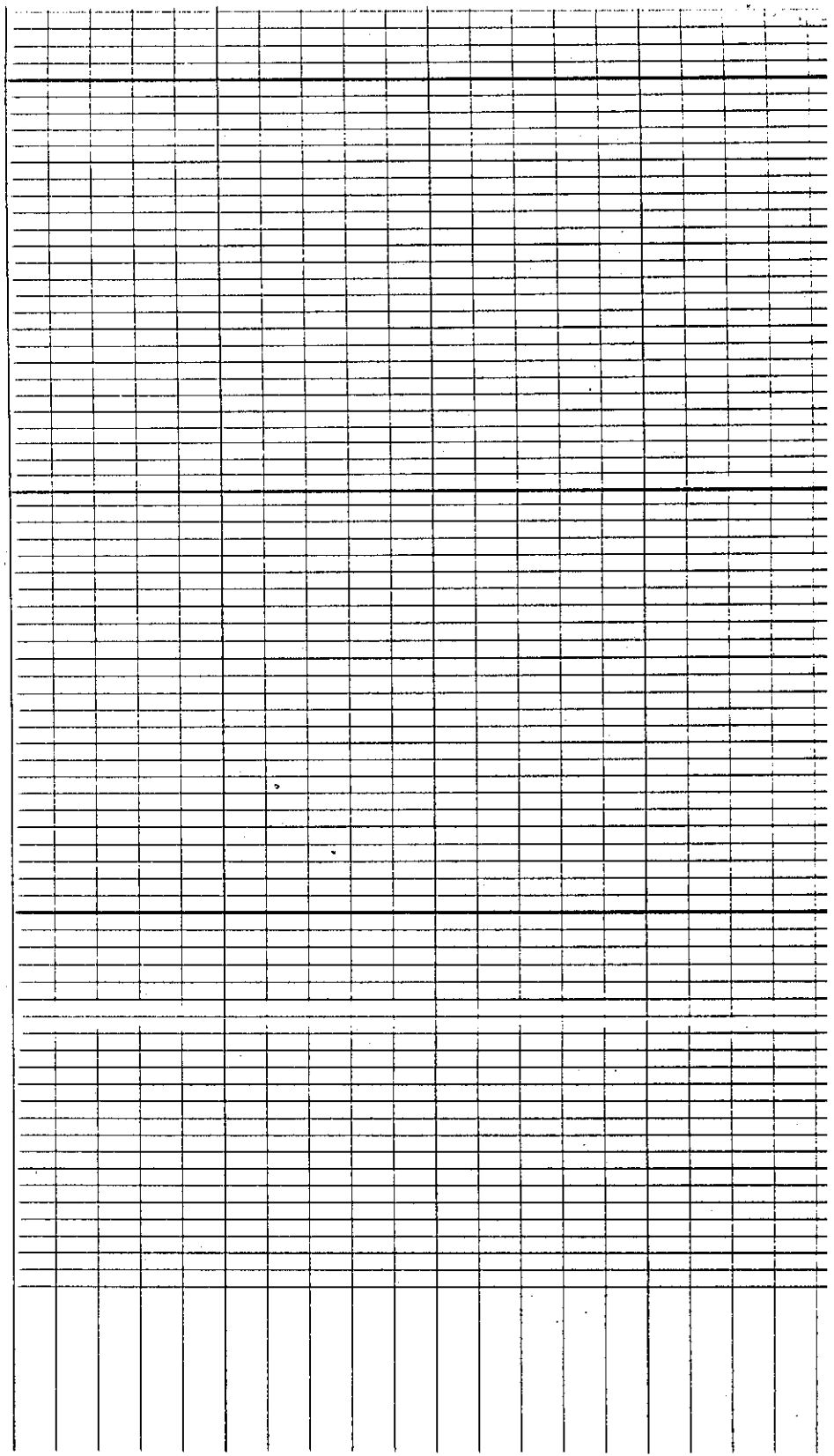
2000





2100

0.02



### GAMMA RAY CALIBRATION

BACKGROUND
36 CPS
CAL
370 CPS

