

COMPANY: EXCHANGE OIL & GAS CORPORATION
 C-764 16-1189
 WELLS: CORCORAN
 #1 EARL BALL ET AL
 SEC 7 1811
 FIELD: LAKE TRAFFORD
 COUNTY: COLLIER
 STATE: FLORIDA

LOCATION: 1320' FNL 1200' FEL
 SUNDAYMENE #1 S.D.C. X 650517
 475 S 780 4/6
 Sec. 16 Twp. 28S Rge. 28E

Permanent Datum: GL Elev. ---
 Log Measured From: KB 18.6ft. Above Perm. Datum Elev. K.B.M. ---
 Drilling Measured From: KB Elev. D.F. ---
 Date: 7/24/71

Run No. 016
 Depth—Driller 12050
 Depth—Log 3578
 Bim. Log Interval 3578
 Top Log Interval 100
 Casting—Driller 98' @ 367/8
 Casting—Logger 3578
 Bit Size 8 3/4"
 Type Fluid in Hole WATER
 Density Visc. --- ml
 pH Fluid Loss --- ml
 Source of Sample C.I.R.C. @ ml
 Rm. @ Meas. Temp. 0.456 @ 98 °F @ °F
 Rec. @ Meas. Temp. --- @ --- °F @ °F
 Source Rm. Rec. --- @ --- °F @ °F
 Rm. @ BHT --- @ --- °F @ °F
 Line Since Circ. 0.228 200°F @ °F
 Max. Rec. Temp. 1.2 HOURS @ °F
 Source Location 55561NATICHZ
 Section No.

Here The well name, location and borehole reference data were furnished by the customer.

ARKS S. O. #24201

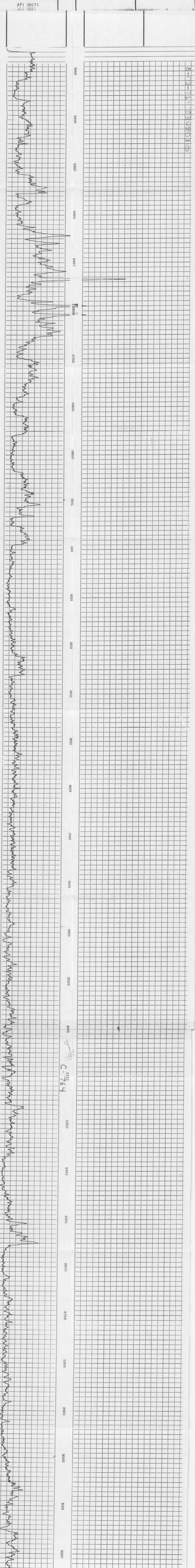
Scale Changes
 Type Log Depth Scale Up Hole Scale Down Hole

Run No. Tool Type Equipment Data Pad Type Tool Pos. Other

is. Visc. --- ml
 Fluid Loss --- ml
 Source of Sample C.I.R.C. @ ml
 Rm. @ Meas. Temp. 0.456 @ 98 °F @ °F
 Rec. @ Meas. Temp. --- @ --- °F @ °F
 Source Rm. Rec. --- @ --- °F @ °F
 Rm. @ BHT --- @ --- °F @ °F
 Line Since Circ. 0.228 200°F @ °F
 Max. Rec. Temp. 1.2 HOURS @ °F
 Source Location 55561NATICHZ
 Section No.

API UNITS

GAMMA RAY



8-05-71 11:02:42 016