

825

5/9

COMPANY	EXXON COMPANY U.S.A.
WELL	GRC 11-4
FIELD	SOUTH BEAR ISLAND
COUNTY	COLLIER
STATE	FLORIDA
Other Services	
LOCATION	179 FEL / 659 FEL
WELL	GRC 11-4
FIELD	SOUTH BEAR ISLAND
COUNTY	COLLIER
STATE	FLORIDA
Other Services	
POSITION	POSITION: (GPS) LOGICAL SURVEY
DATE	DATE: 21-AUG-1991
TIME	TIME: 15:42
FILE	FILE: 1
DATE	DATE: 21-AUG-1991
TIME	TIME: 15:42
FILE	FILE: 1
DATE	DATE: 21-AUG-1991
TIME	TIME: 15:42
FILE	FILE: 1

The well name, location and borehole reference data were furnished by the customer.

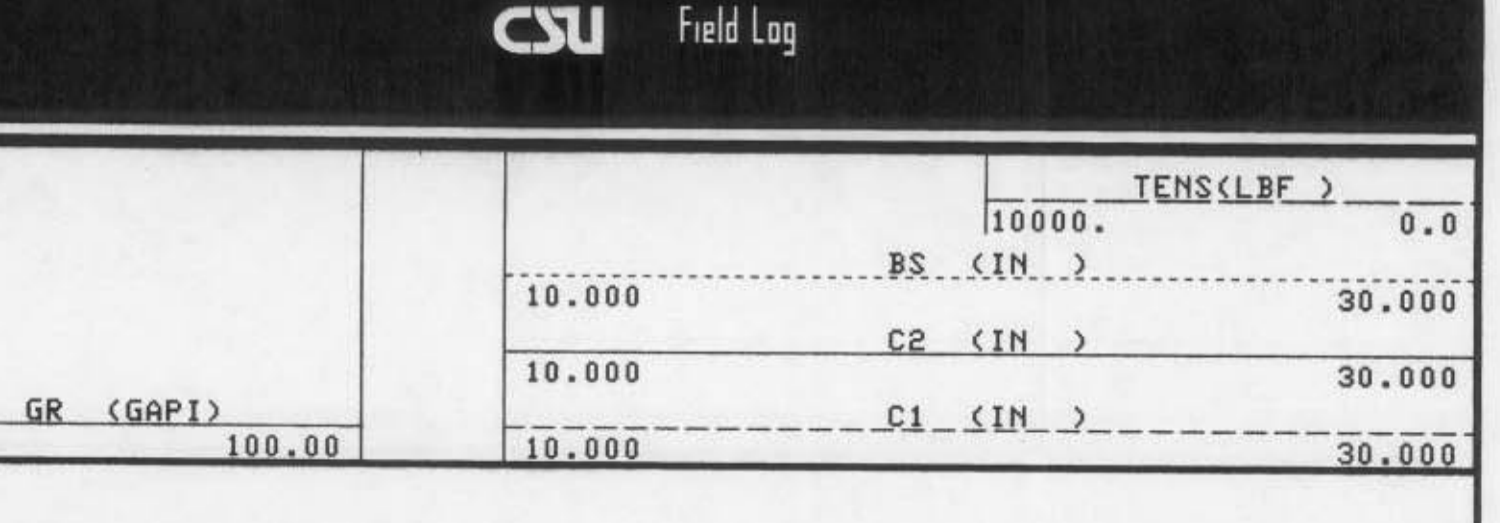
All interpretations are opinions based on inferences from electrical or other measurements and we cannot, and do not guarantee the accuracy or correctness of any interpretations, and we shall not, except in the case of gross or willful negligence on our part, be liable or responsible for any loss, costs, damages or expenses incurred or sustained by anyone resulting from any interpretations made by any of our officers, agents or employees. These interpretations are also subject to Clause 4 of our General Terms and Conditions as set out in our current Price Schedule.

Well No.	ONE
Service Order No.	
Drilling Fluid Level	
Salinity	
Rm @ BHT	
Rm @ SURF	
Logging Speed	
EQUIPMENT DATA	
Tool Number 1	
Tool Number 2	
Tool Number 3	
Tool Number 4	
Tool Number 5	
Tool Number 6	
Tool Number 7	
Tool Number 8	
Tool Number 9	
Tool Number 10	
Tool Number 11	
Tool Number 12	
REMARKS:	

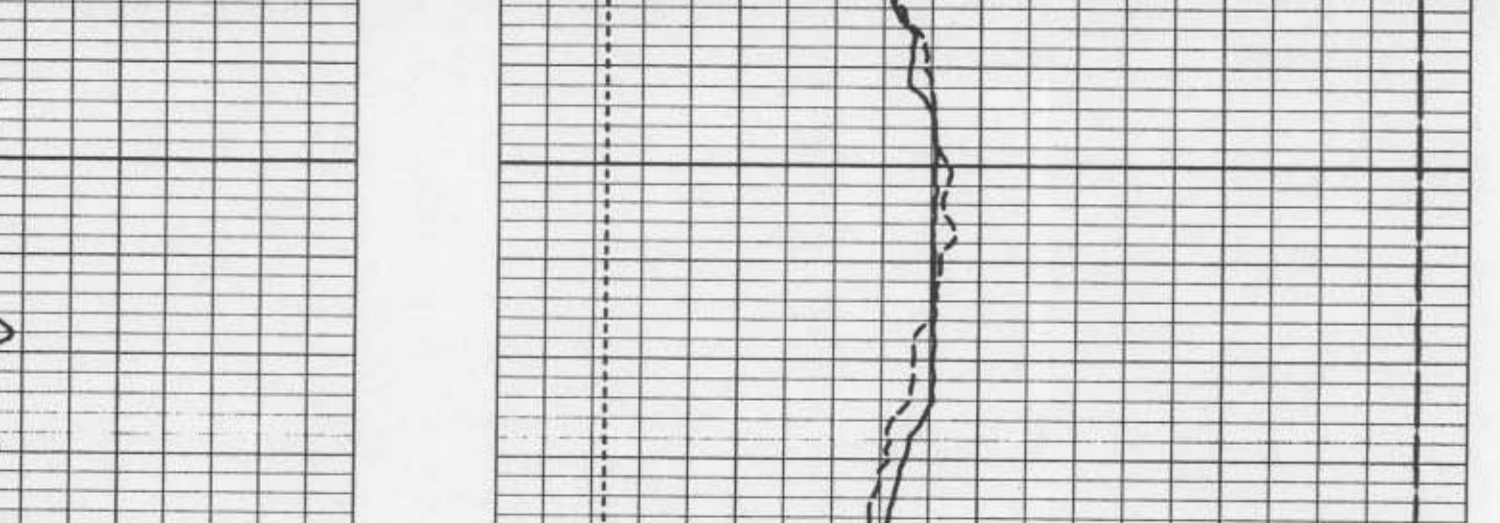
GR (GAPI)	0.0	100.00
BS (IN)	10.000	30.000
CP (IN)	10.000	30.000
C1 (IN)	10.000	30.000



GR (GAPI)	0.0	100.00
BS (IN)	10.000	30.000
CP (IN)	10.000	30.000
C1 (IN)	10.000	30.000



GR (GAPI)	0.0	100.00
BS (IN)	10.000	30.000
CP (IN)	10.000	30.000
C1 (IN)	10.000	30.000



GR (GAPI)	0.0	100.00
BS (IN)	10.000	30.000
CP (IN)	10.000	30.000
C1 (IN)	10.000	30.000

BEFORE SURVEY CALIBRATION SUMMARY

PERFORMED: 21-AUG-1991 15:05
 PROGRAM FILE: BMS (VERSION 32.2 00/00/00 88/11/16)

MEASURED		CALIBRATED		UNITS
SMALL	LARGE	SMALL	LARGE	
C1 15.36	21.0	16.00	23.0	IN
C2 14.94	20.7	16.00	23.0	IN