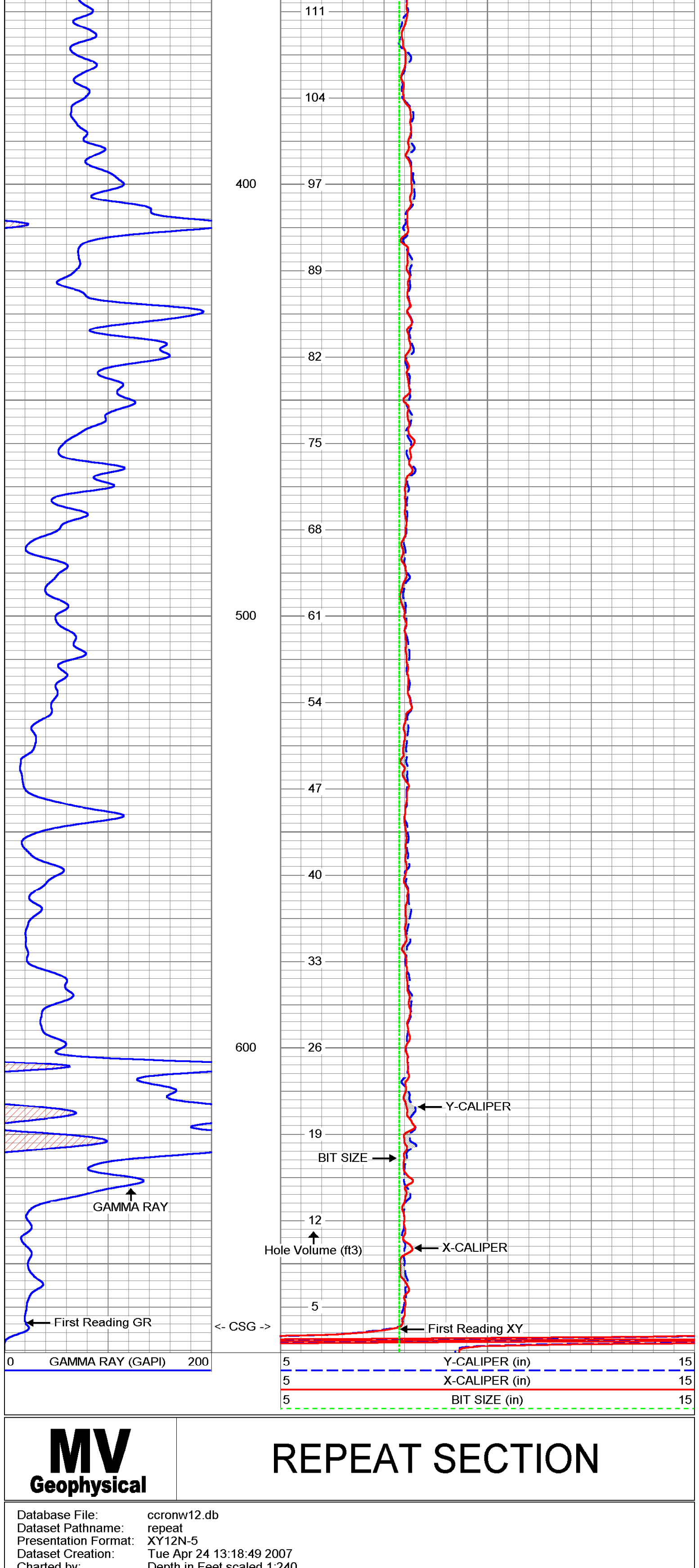
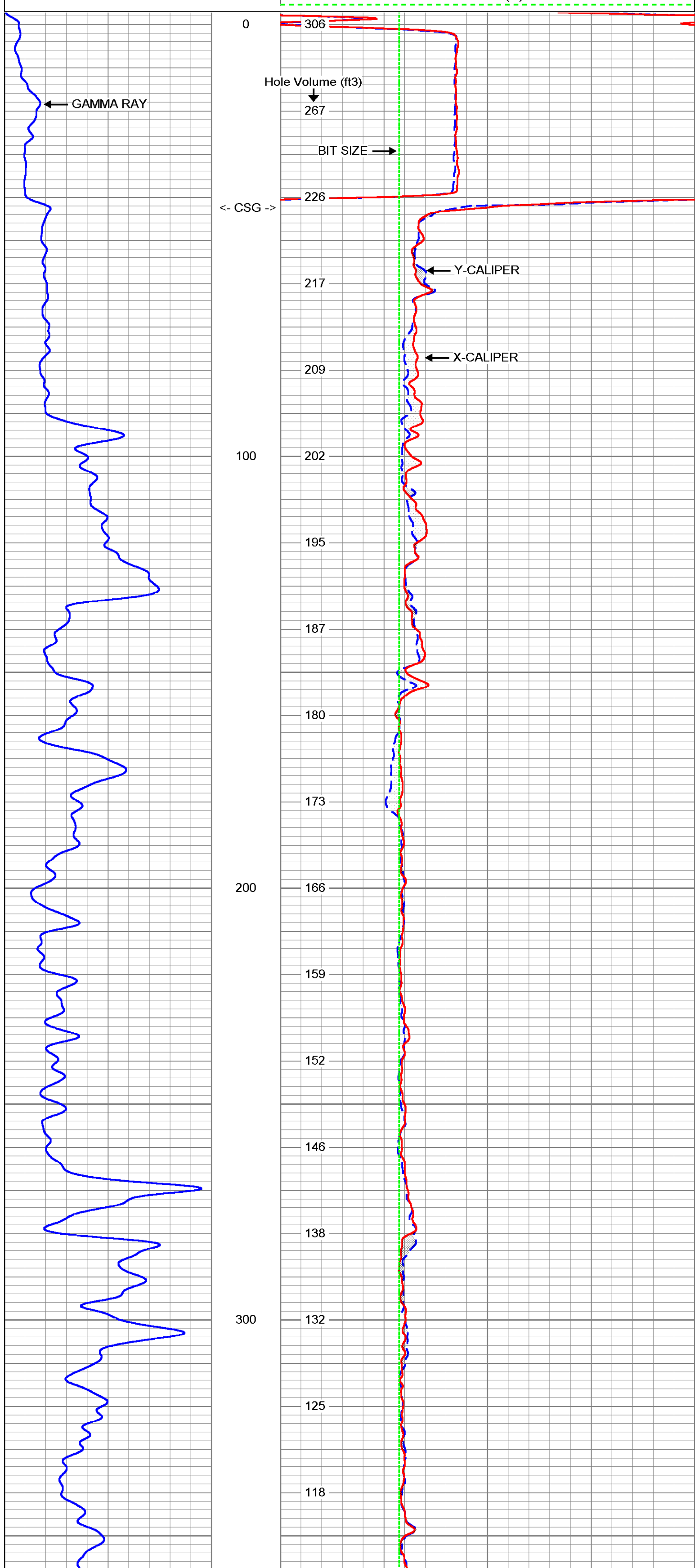
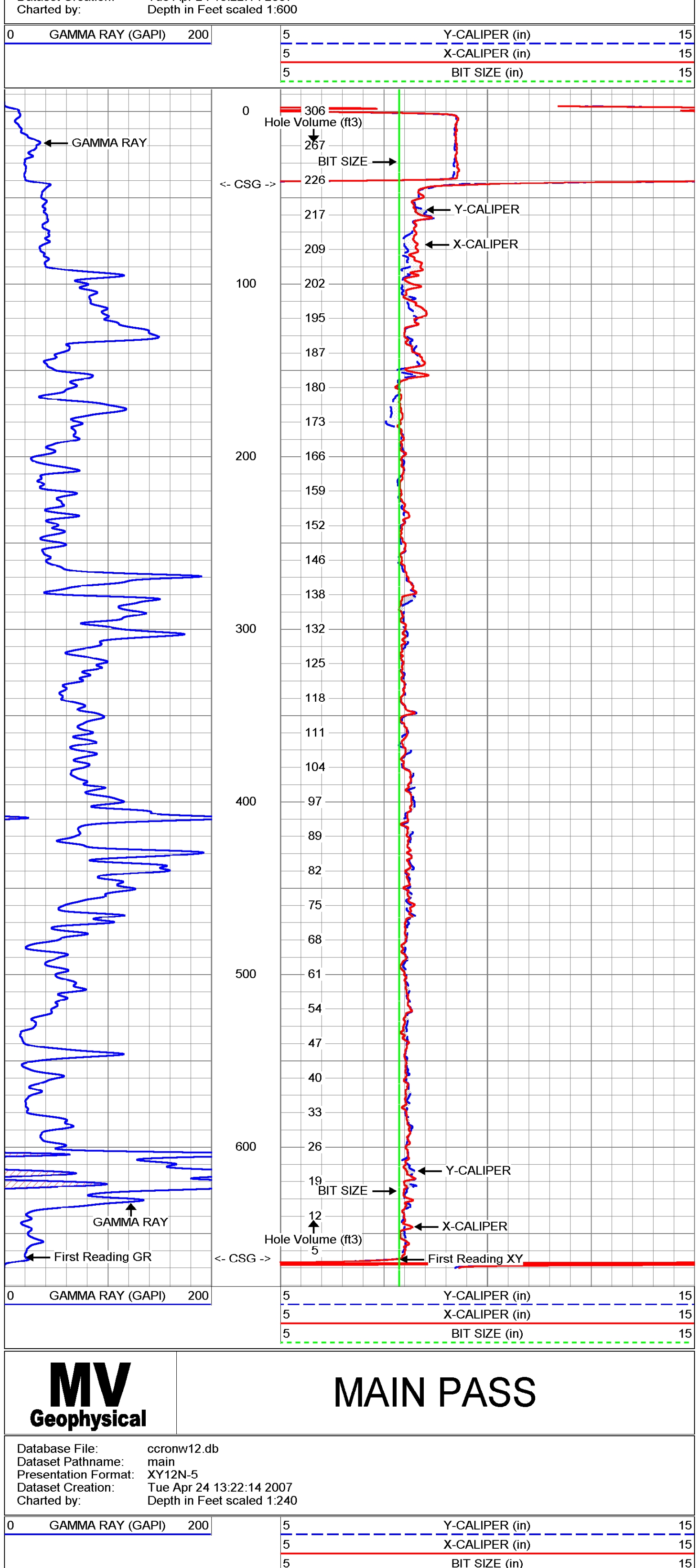
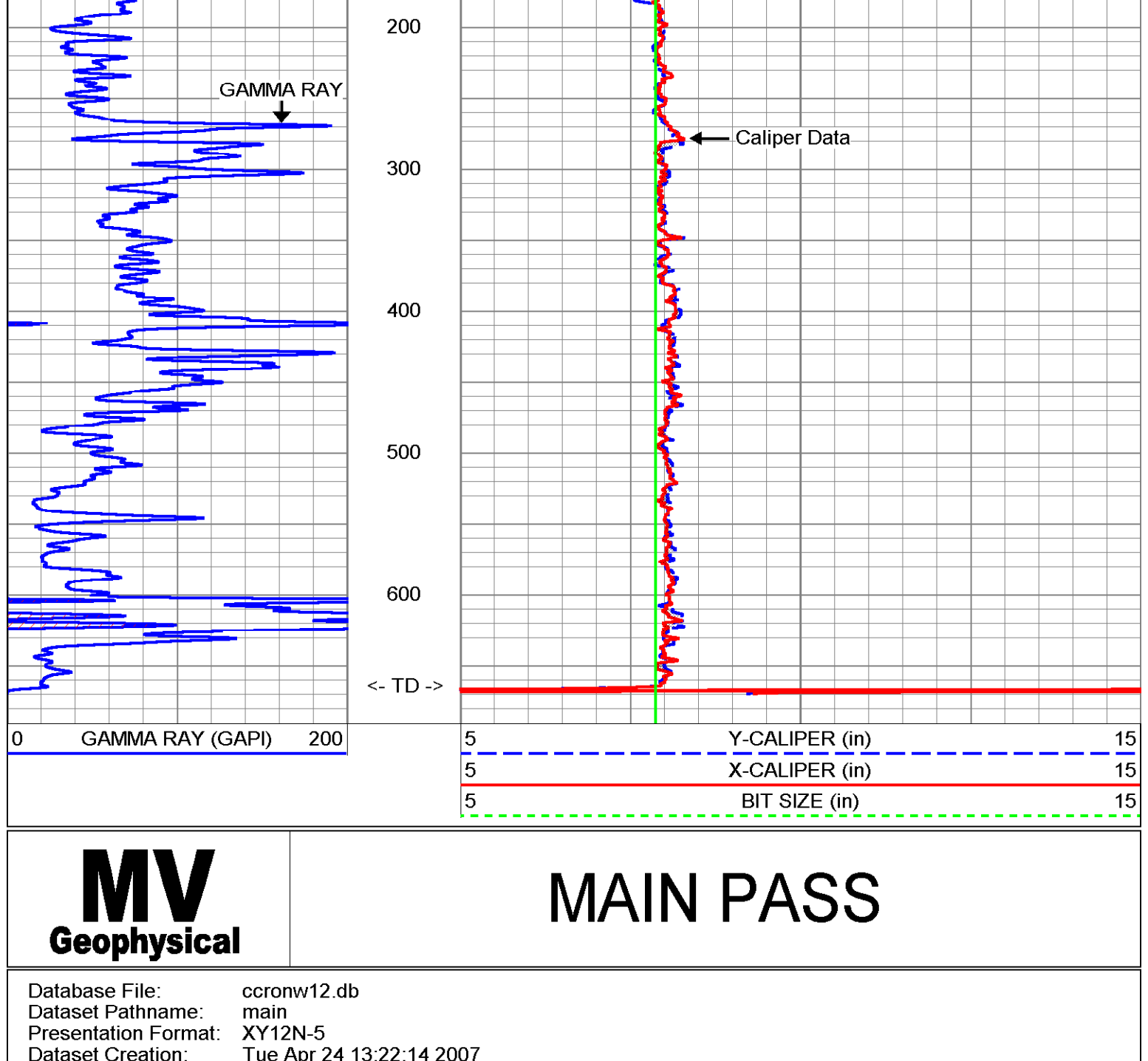


Company: Diversified Drilling Corp.		Well: NW 12N		Field: Cape Coral		County: Lee		State: Florida	
Location: NW 12N 3rd AVE & NW 10th TER		City: Cape Coral		County: Lee		State: Florida		Other Services: XYSR, DWSR	
Log Measured from: G.L.		Emission: G.L.		Emission: G.L.		Emission: G.L.		Emission: G.L.	
Date Entered: 24APR2007		Date Logged: 24APR2007		Date Logged: 24APR2007		Date Logged: 24APR2007		Date Logged: 24APR2007	
Bottom Logged Interval: 665' - 667'		Bottom Logged Interval: 665' - 667'		Bottom Logged Interval: 665' - 667'		Bottom Logged Interval: 665' - 667'		Bottom Logged Interval: 665' - 667'	
Type: MWD		Type: MWD		Type: MWD		Type: MWD		Type: MWD	
Density: 1.6000		Density: 1.6000		Density: 1.6000		Density: 1.6000		Density: 1.6000	
Viscosity: 100		Viscosity: 100		Viscosity: 100		Viscosity: 100		Viscosity: 100	
Time: 12:30:42Z(07)		Time: 12:30:42Z(07)		Time: 12:30:42Z(07)		Time: 12:30:42Z(07)		Time: 12:30:42Z(07)	
Log Number: 7-879		Log Number: 7-879		Log Number: 7-879		Log Number: 7-879		Log Number: 7-879	
Witnessed By: S. Mammari		Witnessed By: S. Mammari		Witnessed By: S. Mammari		Witnessed By: S. Mammari		Witnessed By: S. Mammari	
Recorded By: G. Young		Recorded By: G. Young		Recorded By: G. Young		Recorded By: G. Young		Recorded By: G. Young	
Equipment Number: F1-KAS-1		Equipment Number: F1-KAS-1		Equipment Number: F1-KAS-1		Equipment Number: F1-KAS-1		Equipment Number: F1-KAS-1	
Size: 42"		Size: 42"		Size: 42"		Size: 42"		Size: 42"	
Weight: 315 lbs		Weight: 315 lbs		Weight: 315 lbs		Weight: 315 lbs		Weight: 315 lbs	
Production String: 42"		Production String: 42"		Production String: 42"		Production String: 42"		Production String: 42"	
Line No.: 3007115		Line No.: 3007115		Line No.: 3007115		Line No.: 3007115		Line No.: 3007115	

All interpretations are opinions based on inferences from electrical or other measurements and we cannot and do not guarantee the accuracy or correctness of any interpretation, and we shall not, except in the case of gross or willful negligence on our part, be liable or responsible for any loss, costs, damages, or expenses incurred or sustained by anyone resulting from any interpretation made by any of our offices, agents or employees. These interpretations are also subject to our general terms and conditions set out in our current Price Schedule.

Comments: X-Y Caliper Arm Extensions: 33"



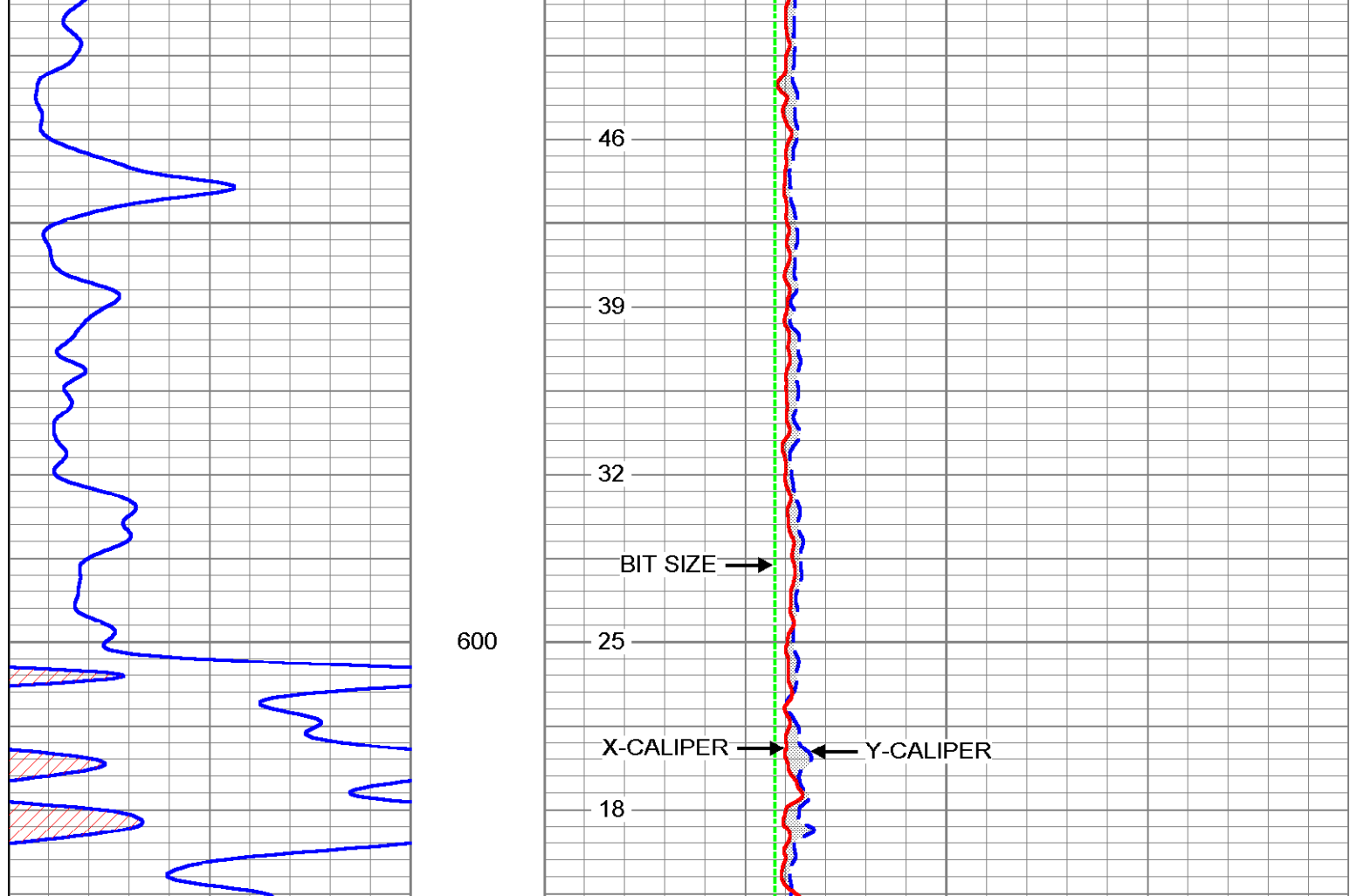
Gamma Ray Calibration Report

Serial Number: MV01B
 Tool Model: RTSB
 Performed: Mon Apr 23 15:20:04 2007

Calibrator Value: 120 GAPI

Background Reading: 18.451 cps
 Calibrator Reading: 183.249 cps

Sensitivity: 0.728164 GAPI/cps



XY Caliper Calibration Report

Serial Number: 01S
 Tool Model: XYCS
 Performed: Tue Apr 24 13:30:40 2007

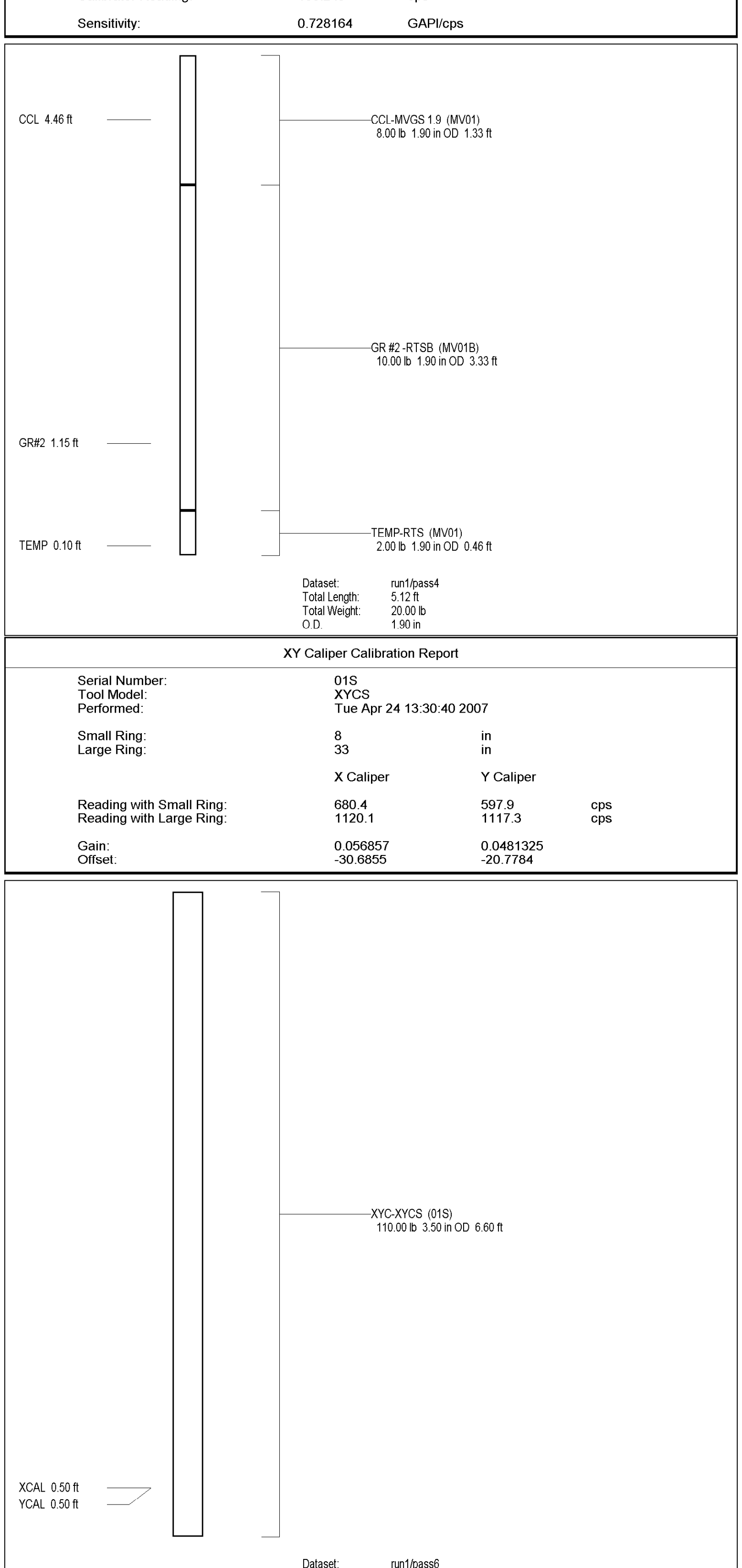
Small Ring: 8 in
 Large Ring: 33 in

X Caliper: 680.4 cps
 Y Caliper: 597.9 cps

Reading with Small Ring: 1120.1 cps
 Reading with Large Ring: 1117.3 cps

Gain: 0.056857
 Offset: -30.6855

0.0481325
 -20.7784





FLUID CONDUCTIVITY TEMPERATURE LOG

Company	Diversified Drilling Corp.	Location	NW of NW 3rd AVE & NW 16th TER Cape Coral Water Utilities Department MWH	Other Services	X/Y/GR/DLC FCT/BHC FLOW/DHTV
Well	NW 12N	County	Lee	State/Prv	Florida
Field	Cape Coral	Company	Diversified Drilling Corporation	Well	NW 12N
County	Lee	Field	Cape Coral	County	Lee
Date	22-JUN-2007	State/Prv	Florida	Company	Diversified Drilling Corporation
Run Number	THREE	Location	NW of NW 3rd AVE & NW 16th TER Cape Coral Water Utilities Department MWH	Well	NW 12N
Depth Logger	832'	County	Lee	Field	Cape Coral
Bottom Logged Interval	831'	Company	Diversified Drilling Corporation	County	Lee
Top Log Interval	575'	State/Prv	Florida	Company	Diversified Drilling Corporation
Open Hole Size	11"	Well	NW 12N	Field	Cape Coral
Type Fluid	H2O	County	Lee	Company	Diversified Drilling Corporation
Density / Viscosity	NANA	State/Prv	Florida	Well	NW 12N
Max. Recorded Temp.	na	Field	Cape Coral	County	Lee
Estimated Cement Top	na	Company	Diversified Drilling Corporation	State/Prv	Florida
Time Well Ready	08:15:6/22/2007	Location	NW of NW 3rd AVE & NW 16th TER Cape Coral Water Utilities Department MWH	Other Services	X/Y/GR/DLC FCT/BHC FLOW/DHTV
Time Logger on Bottom	11:00:6/22/2007	County	Lee	Well	NW 12N
Equipment Number	MWGS-1	Field	Cape Coral	County	Lee
Location	FL Myers	Company	Diversified Drilling Corporation	State/Prv	Florida
Recorded By	S.Miller/C.Miller	Location	NW of NW 3rd AVE & NW 16th TER Cape Coral Water Utilities Department MWH	Other Services	X/Y/GR/DLC FCT/BHC FLOW/DHTV
Witnessed By	G.Young (MWH)	County	Lee	Well	NW 12N
Run Number	THREE	Company	Diversified Drilling Corporation	Field	Cape Coral
Bit	From	State/Prv	Florida	Company	Diversified Drilling Corporation
ONE	42'	Well	NW 12N	Field	Cape Coral
TWO	18.75'	County	Lee	Company	Diversified Drilling Corporation
THREE	11'	State/Prv	Florida	Well	NW 12N
Size	630'	Field	Cape Coral	County	Lee
Weight	832'	Company	Diversified Drilling Corporation	State/Prv	Florida
Wgt/Fl	.375 WT	Location	NW of NW 3rd AVE & NW 16th TER Cape Coral Water Utilities Department MWH	Other Services	X/Y/GR/DLC FCT/BHC FLOW/DHTV
Surf. String	12" FRP	County	Lee	Well	NW 12N
Prod. String	12.1 ID	Field	Cape Coral	County	Lee
Production String	SURFACE	Company	Diversified Drilling Corporation	State/Prv	Florida
Lineer	630'	Location	NW of NW 3rd AVE & NW 16th TER Cape Coral Water Utilities Department MWH	Other Services	X/Y/GR/DLC FCT/BHC FLOW/DHTV
Invoice No.	2007172	County	Lee	Well	NW 12N
		Field	Cape Coral	County	Lee
		Company	Diversified Drilling Corporation	State/Prv	Florida

<<< Fold Here >>>

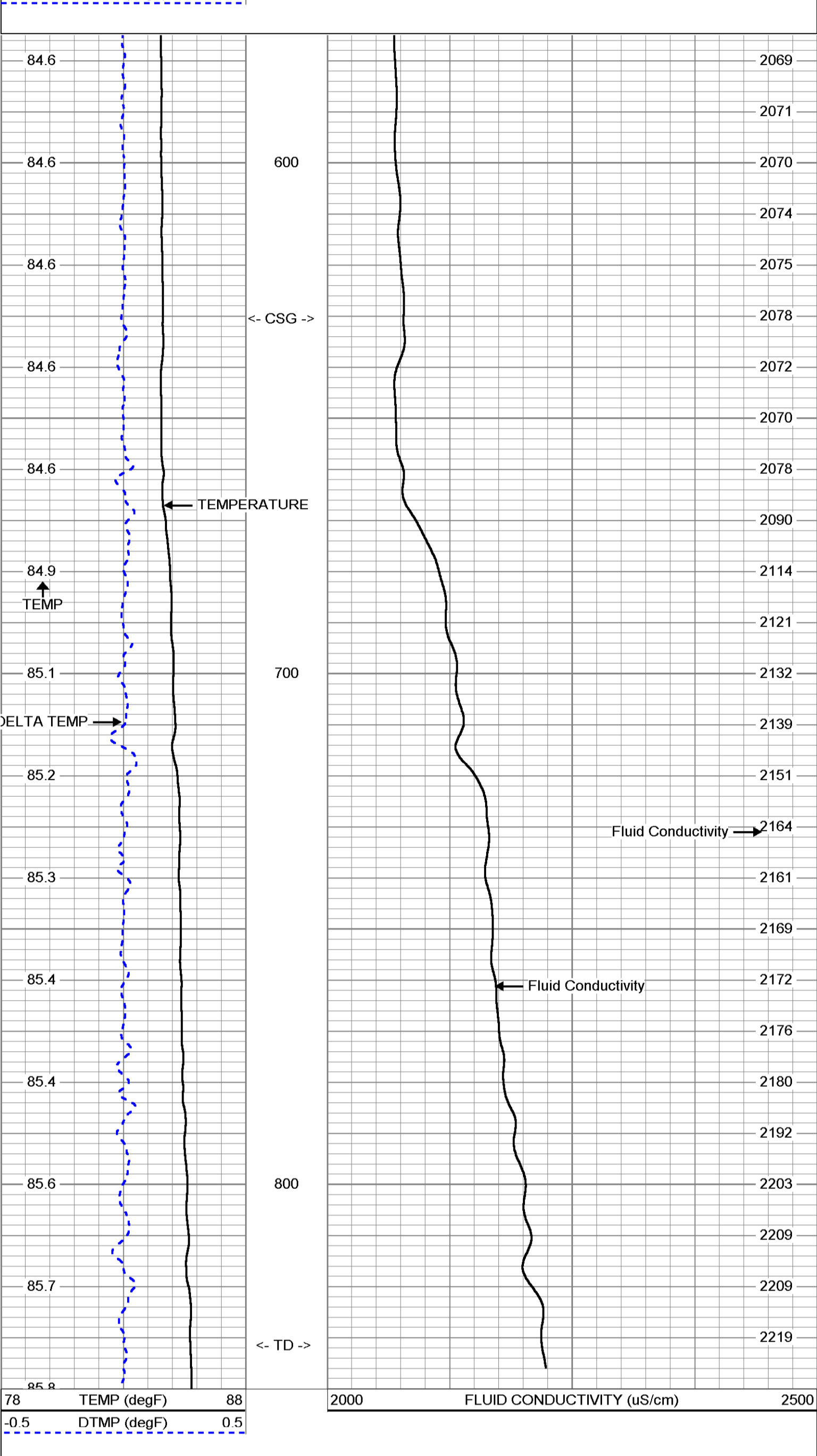
All interpretations are opinions based on inferences from electrical or other measurements and we cannot and do not guarantee the accuracy or correctness of any interpretation, and we shall not, except in the case of gross or willful negligence on our part, be liable or responsible for any loss, costs, damages, or expenses incurred or sustained by anyone resulting from any interpretation made by any of our officers, agents or employees. These interpretations are also subject to our general terms and conditions set out in our current Price Schedule.

Comments

STATIC and DYNAMIC DOWN passes were performed.
 Cw=2071 uS/cm @ 84.4 degF (Dynamic Sample). Q =~200 gpm.
 FLUID RESISTIVITY CALIBRATION REPORT (Performed: 2-MAY-07 11:45)
 uS/cm CPS
 2042.7 2924.47
 6880.2 2768.26
 14891.4 2256.36
 TEMPERATURE CALIBRATION REPORT (Performed: erformed: 2-MAY-07 11:15)
 DEG-F CPS
 38.1 231.25
 144.2 6959.25

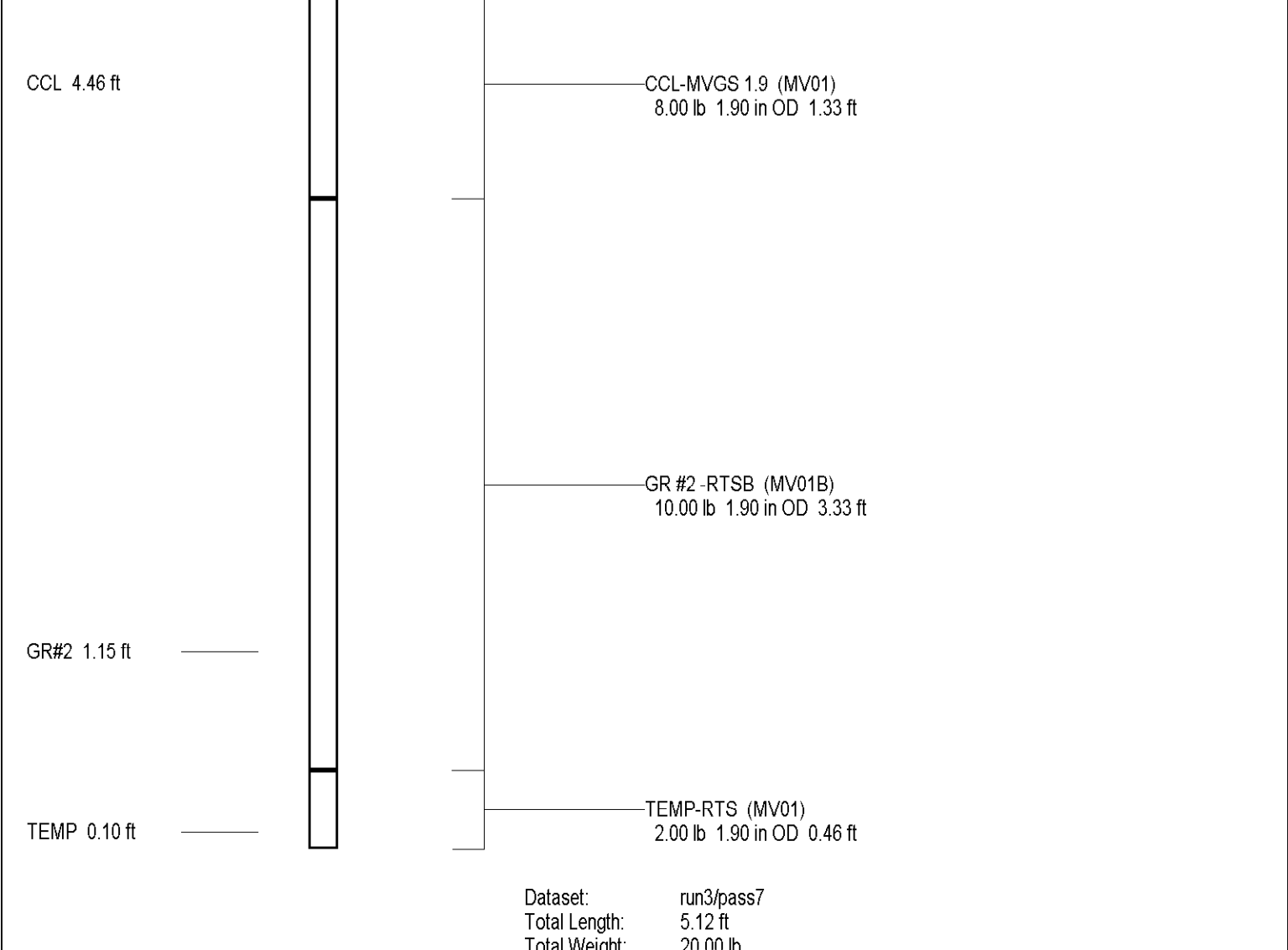
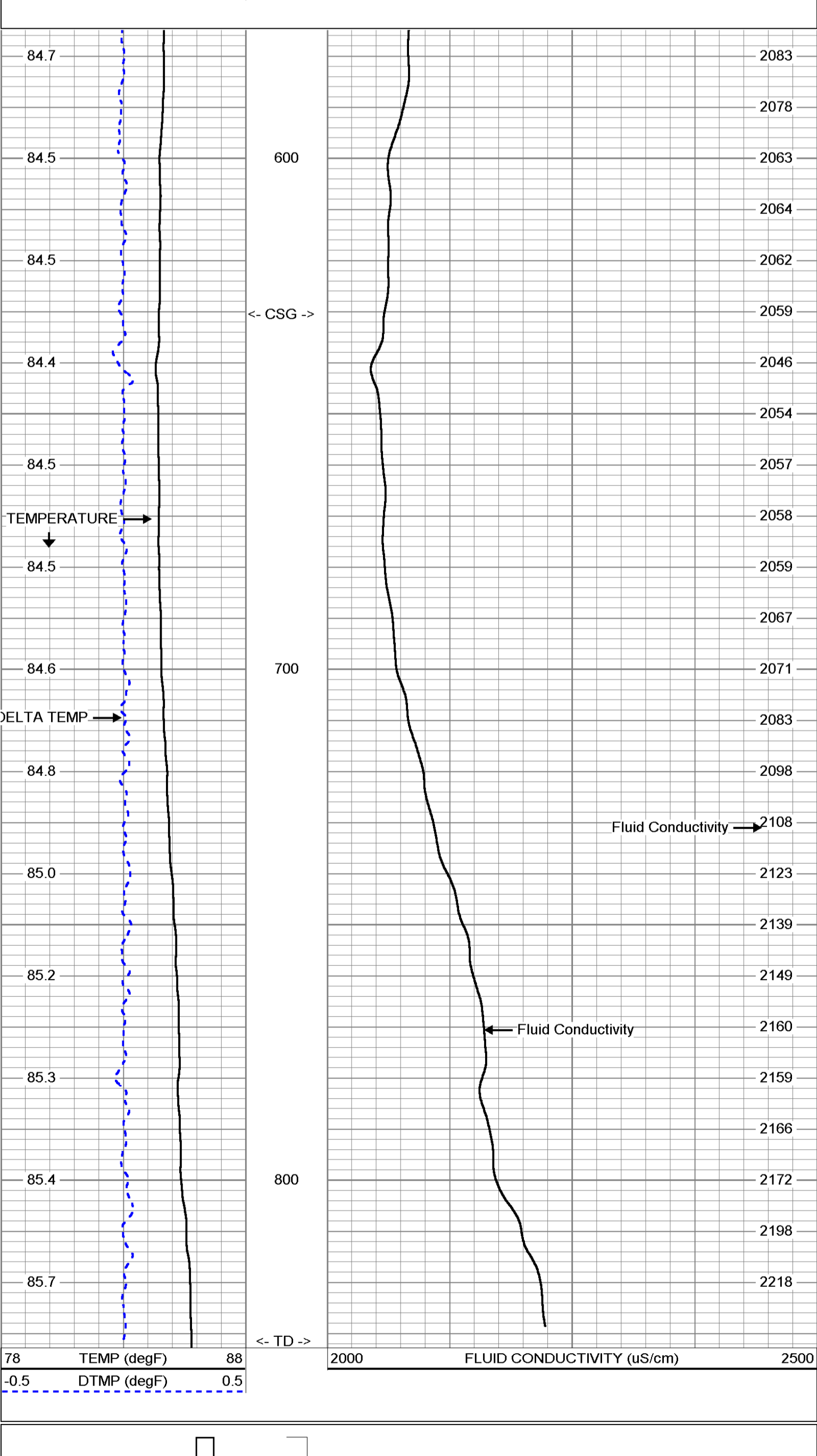
STATIC FCT DOWN

Database File: ccronw12.db
 Dataset Pathname: run3/DFCT
 Presentation Format: FCT12N
 Dataset Creation: Fri Jun 22 12:51:56 2007
 Charted by: Depth in Feet scaled 1:240



STATIC FCT DOWN

Database File: ccronw12.db
 Dataset Pathname: run3/sFCT
 Presentation Format: FCT12N
 Dataset Creation: Fri Jun 22 12:44:08 2007
 Charted by: Depth in Feet scaled 1:240



Company	Diversified Drilling Corp.	Well	NW 12N	Field	Cape Coral	County	Lee	State/Prov	Florida
Date	22-JUN-2007	Location	NW of NW 3rd AVE & NW 16th TER	City	Cape Coral	County	Lee	State/Prov	Florida
Run Number	THREE	Permanent Datum	G.L.	Elevation		Other Services	XYGR DILL FCT BHC FLOW/DITV		
Depth Logger	832	Log Measured From	G.L.	Elevation					
Depth Logger Interval	331	Drilling Measured From	G.L.	Elevation					
Open Hole Size	11"								
Type Fluid	H2O								
Density / Viscosity	N/A								
Max. Recorded Temp	NA								
Estimated Cement Top									
Time Logset on Bottom	08:15:02/2007								
Time Logset on Bitum	11:45:02/2007								
Location	FL 1445								
Location Number	FL 1445								
Recorded By	S. Miller/C. Miller								
Witnessed By	G. Young (MWH)								
Run Number	ONE	Bit	7.875"	From	0850	To	0850	Weight	
Run Number	TWOF	Bit	12.125"	From	0850	To	0850	Weight	
Run Number	THREE	Bit	12.125"	From	0850	To	0850	Weight	
Run Number	FOUR	Bit	12.125"	From	0850	To	0850	Weight	
Run Number	FIVE	Bit	12.125"	From	0850	To	0850	Weight	
Run Number	SIX	Bit	12.125"	From	0850	To	0850	Weight	
Run Number	SEVEN	Bit	12.125"	From	0850	To	0850	Weight	
Run Number	EIGHT	Bit	12.125"	From	0850	To	0850	Weight	
Run Number	NINE	Bit	12.125"	From	0850	To	0850	Weight	
Run Number	TEN	Bit	12.125"	From	0850	To	0850	Weight	
Run Number	ELEVEN	Bit	12.125"	From	0850	To	0850	Weight	
Run Number	TWELVE	Bit	12.125"	From	0850	To	0850	Weight	
Run Number	THIRTEEN	Bit	12.125"	From	0850	To	0850	Weight	
Run Number	FOURTEEN	Bit	12.125"	From	0850	To	0850	Weight	
Run Number	FIFTEEN	Bit	12.125"	From	0850	To	0850	Weight	
Run Number	SIXTEEN	Bit	12.125"	From	0850	To	0850	Weight	
Run Number	SEVENTEEN	Bit	12.125"	From	0850	To	0850	Weight	
Run Number	EIGHTEEN	Bit	12.125"	From	0850	To	0850	Weight	
Run Number	NINETEEN	Bit	12.125"	From	0850	To	0850	Weight	
Run Number	TWENTY	Bit	12.125"	From	0850	To	0850	Weight	
Run Number	TWENTY ONE	Bit	12.125"	From	0850	To	0850	Weight	
Run Number	TWENTY TWO	Bit	12.125"	From	0850	To	0850	Weight	
Run Number	TWENTY THREE	Bit	12.125"	From	0850	To	0850	Weight	
Run Number	TWENTY FOUR	Bit	12.125"	From	0850	To	0850	Weight	
Run Number	TWENTY FIVE	Bit	12.125"	From	0850	To	0850	Weight	
Run Number	TWENTY SIX	Bit	12.125"	From	0850	To	0850	Weight	
Run Number	TWENTY SEVEN	Bit	12.125"	From	0850	To	0850	Weight	
Run Number	TWENTY EIGHT	Bit	12.125"	From	0850	To	0850	Weight	
Run Number	TWENTY NINE	Bit	12.125"	From	0850	To	0850	Weight	
Run Number	THIRTY	Bit	12.125"	From	0850	To	0850	Weight	

All interpretations are opinions based on inferences from electrical or other measurements and we cannot and do not guarantee the accuracy or correctness of any interpretation, and we shall not, except in the case of gross or willful negligence on our part, be liable or responsible for any loss, costs, damages, or expenses incurred or sustained by anyone resulting from any interpretation made by any of our officers, agents or employees. These interpretations are also subject to our general terms and conditions set out in our current Price Schedule.

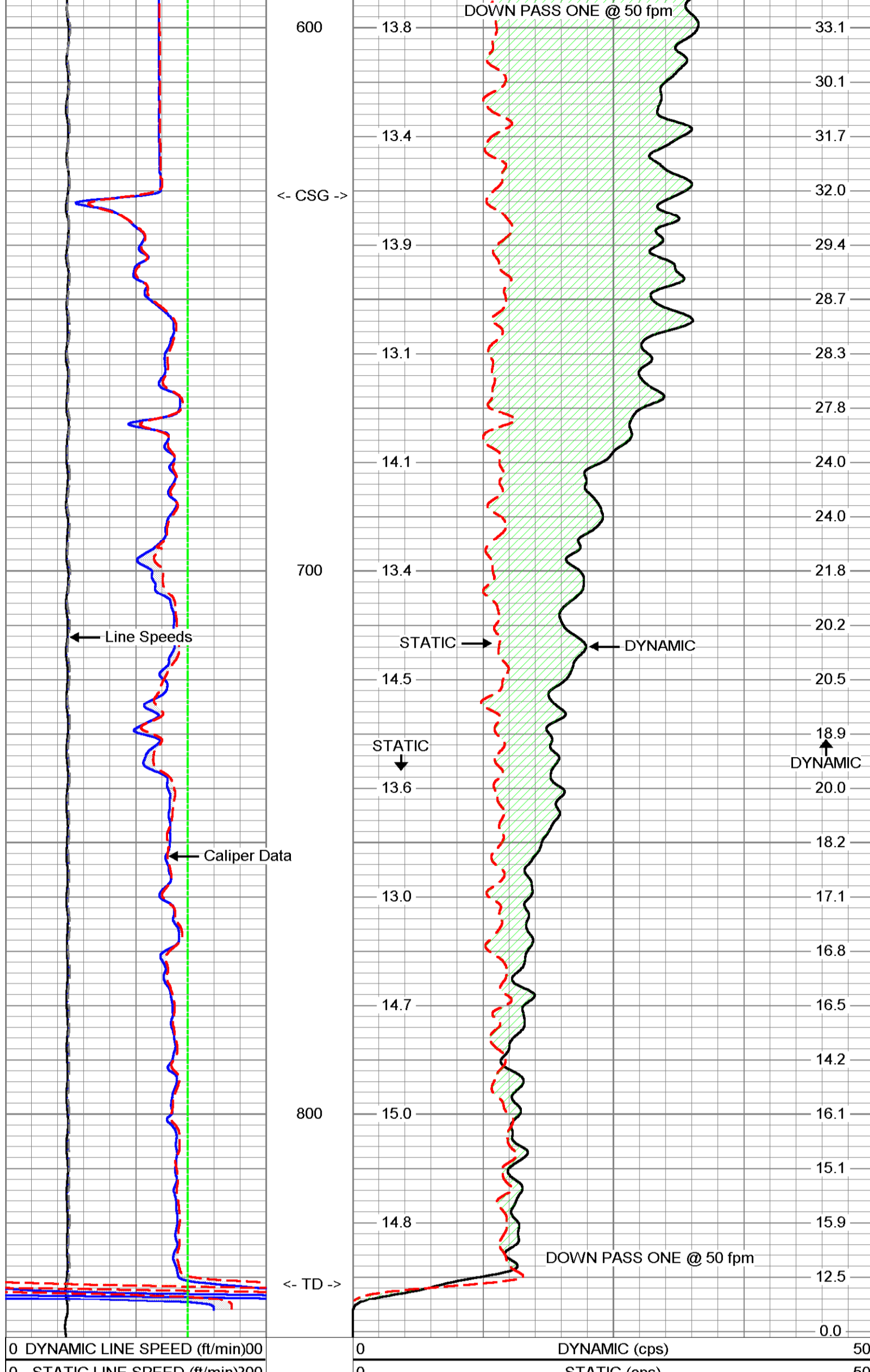
Comments

STATIC and DYNAMIC down passes were made at 50 fpm.
 4 station performed.
 Q ≈ 200 gpm

S/D DOWN @ 50 fpm

Database File: ccronw12.db
 Dataset Pathname: run3/sd50
 Presentation Format: QCC12N
 Dataset Creation: Fri Jun 22 12:52:2007
 Charted by: Depth in Feet scaled 1:240

0 DYNAMIC LINE SPEED (ft/min)00	0 DYNAMIC (cps)	50
0 STATIC LINE SPEED (ft/min)200	0 STATIC (cps)	50
18 X-CALIPER (in)	8	
18 Y CALIPER (in)	8	
18 BIT SIZE (in)	8	

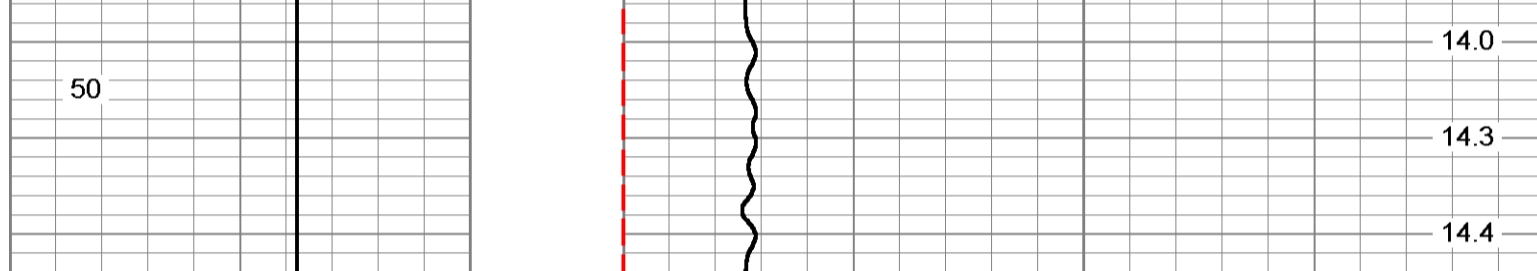


0 DYNAMIC LINE SPEED (ft/min)00	0 DYNAMIC (cps)	50
0 STATIC LINE SPEED (ft/min)200	0 STATIC (cps)	50
18 X-CALIPER (in)	8	
18 Y CALIPER (in)	8	
18 BIT SIZE (in)	8	

Station #4: 600'

Database File: ccronw12.db
 Dataset Pathname: run3/pass16
 Presentation Format: FLOW
 Dataset Creation: Fri Jun 22 12:25:15 2007 by Log VER_5.3
 Charted by: Depth in Feet scaled 1:240

-200 LINE SPEED (ft/min) 200	0 CCW Spin (cps)	100
30 BOREID (in) 100	0 CW Spin (cps)	100

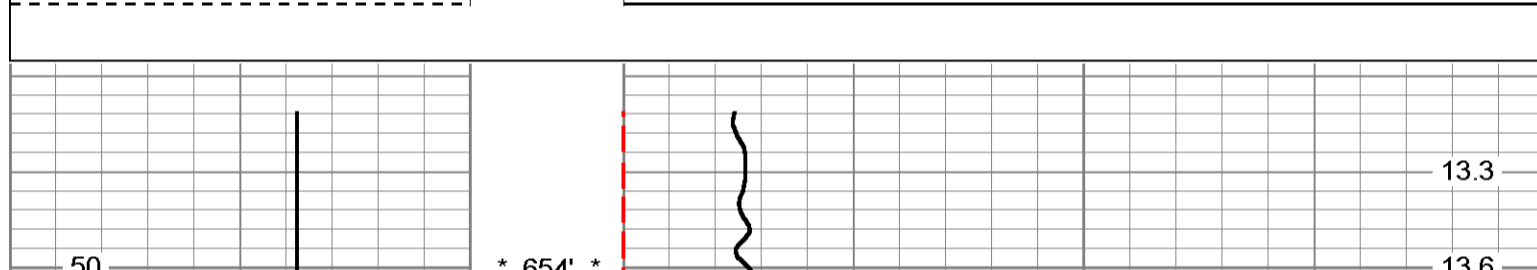


-200 LINE SPEED (ft/min) 200	0 CCW Spin (cps)	100
30 BOREID (in) 100	0 CW Spin (cps)	100

Station #3: 654'

Database File: ccronw12.db
 Dataset Pathname: run3/pass15
 Presentation Format: FLOW
 Dataset Creation: Fri Jun 22 12:22:40 2007 by Log VER_5.3
 Charted by: Depth in Feet scaled 1:240

-200 LINE SPEED (ft/min) 200	0 CCW Spin (cps)	100
30 BOREID (in) 100	0 CW Spin (cps)	100

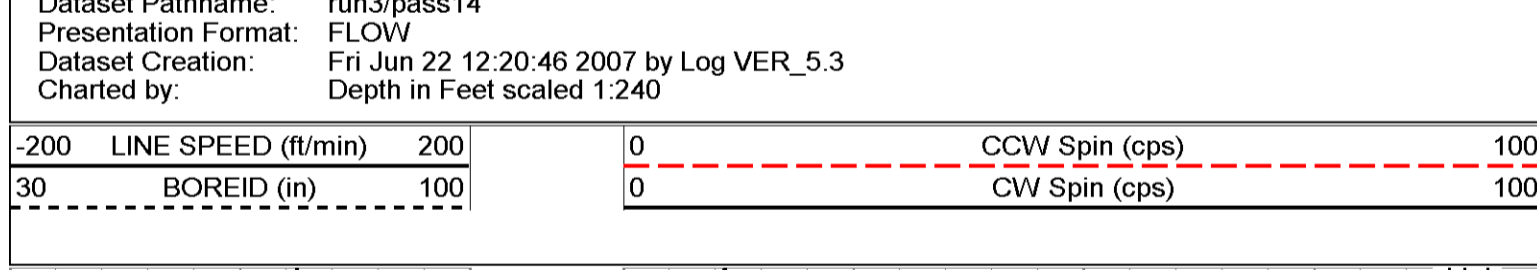


-200 LINE SPEED (ft/min) 200	0 CCW Spin (cps)	100
30 BOREID (in) 100	0 CW Spin (cps)	100

Station #2: 669'

Database File: ccronw12.db
 Dataset Pathname: run3/pass14
 Presentation Format: FLOW
 Dataset Creation: Fri Jun 22 12:20:46 2007 by Log VER_5.3
 Charted by: Depth in Feet scaled 1:240

-200 LINE SPEED (ft/min) 200	0 CCW Spin (cps)	100
30 BOREID (in) 100	0 CW Spin (cps)	100

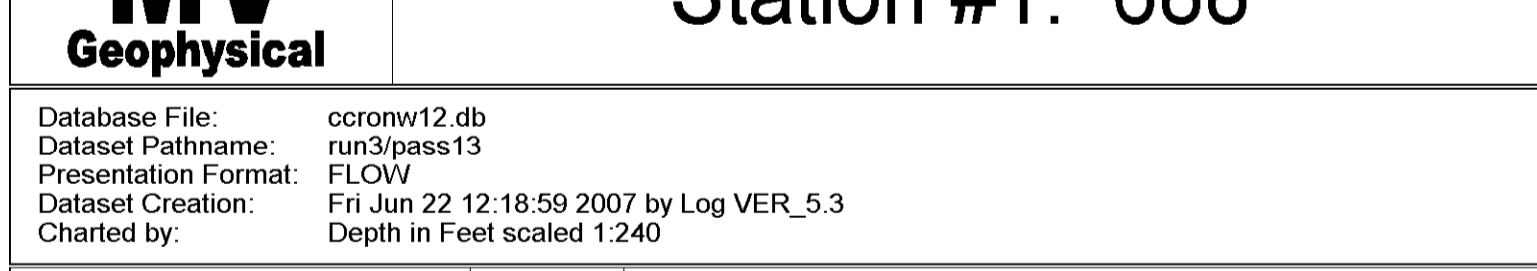


-200 LINE SPEED (ft/min) 200	0 CCW Spin (cps)	100
30 BOREID (in) 100	0 CW Spin (cps)	100

Station #1: 688'

Database File: ccronw12.db
 Dataset Pathname: run3/pass13
 Presentation Format: FLOW
 Dataset Creation: Fri Jun 22 12:18:59 2007 by Log VER_5.3
 Charted by: Depth in Feet scaled 1:240

-200 LINE SPEED (ft/min) 200	0 CCW Spin (cps)	100
30 BOREID (in) 100	0 CW Spin (cps)	100

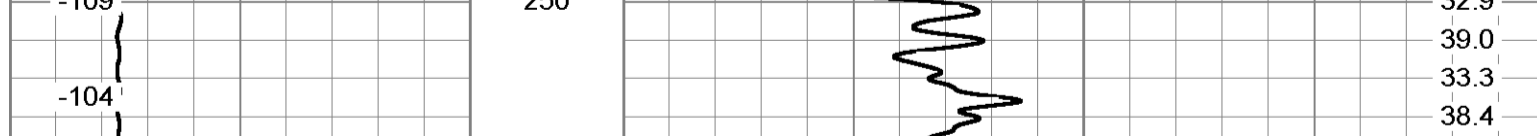
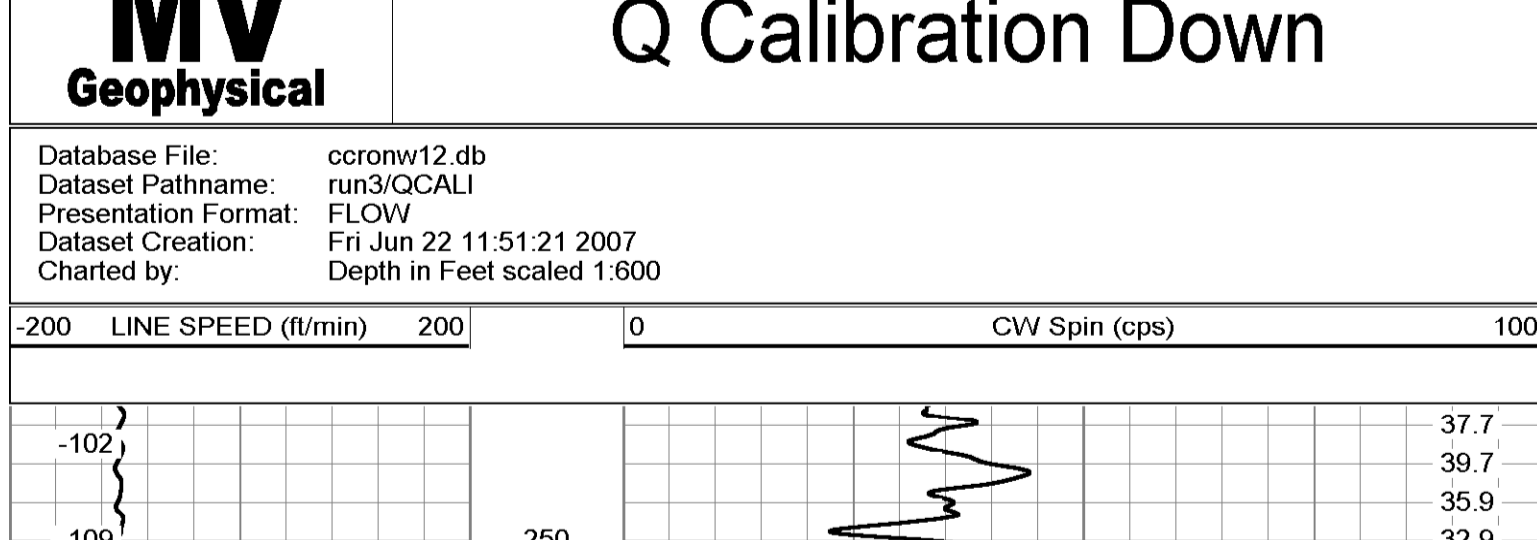


-200 LINE SPEED (ft/min) 200	0 CCW Spin (cps)	100
30 BOREID (in) 100	0 CW Spin (cps)	100

Q Calibration Down

Database File: ccronw12.db
 Dataset Pathname: run3/QCAL1
 Presentation Format: FLOW
 Dataset Creation: Fri Jun 22 11:51:21 2007
 Charted by: Depth in Feet scaled 1:600

-200 LINE SPEED (ft/min) 200	0 CW Spin (cps)	100
------------------------------	-----------------	-----



Dataset: run3/pass16
 Total Length: 9.80 ft
 Total Weight: 85.00 lb
 O.D.: 3.75 in

