

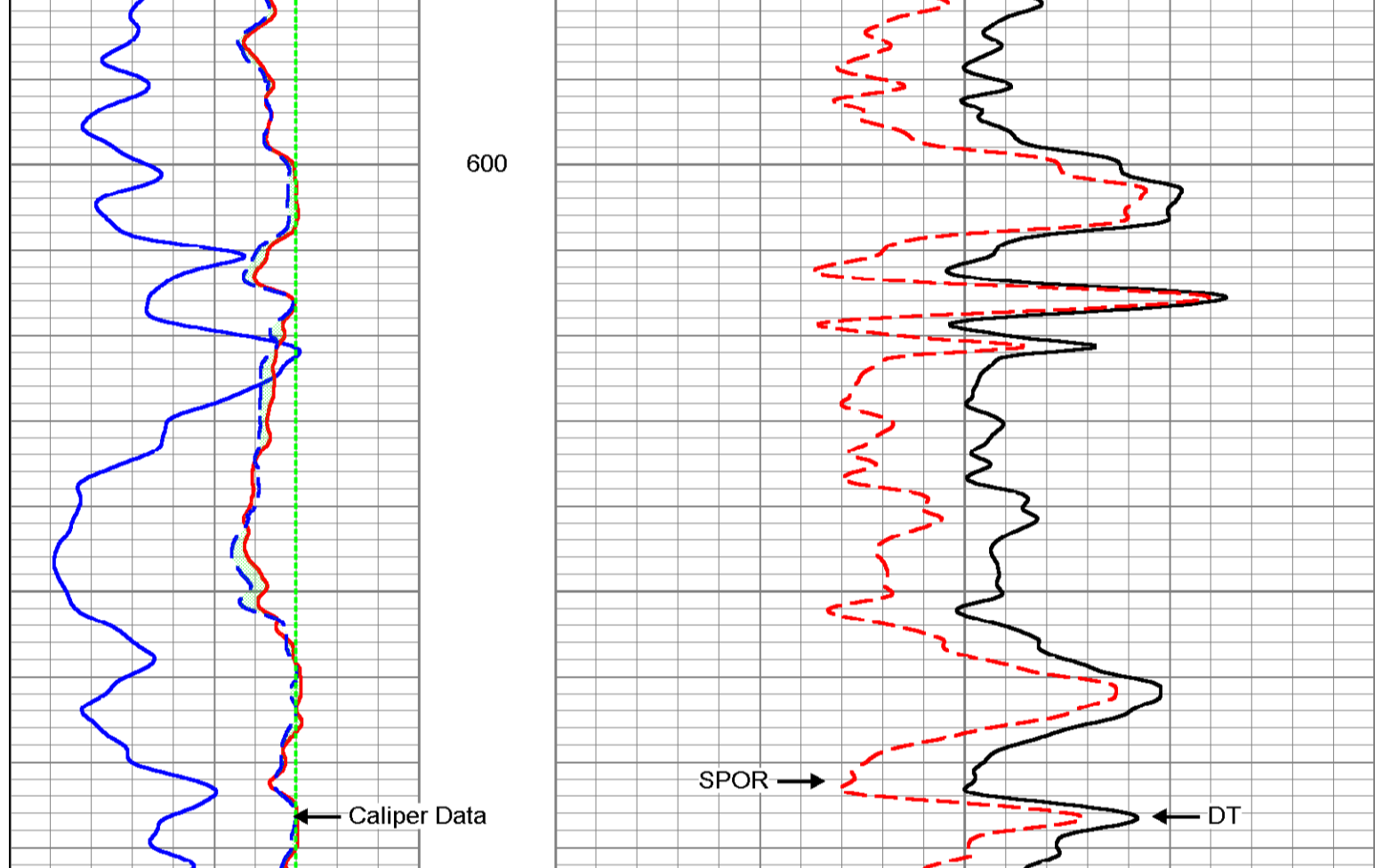
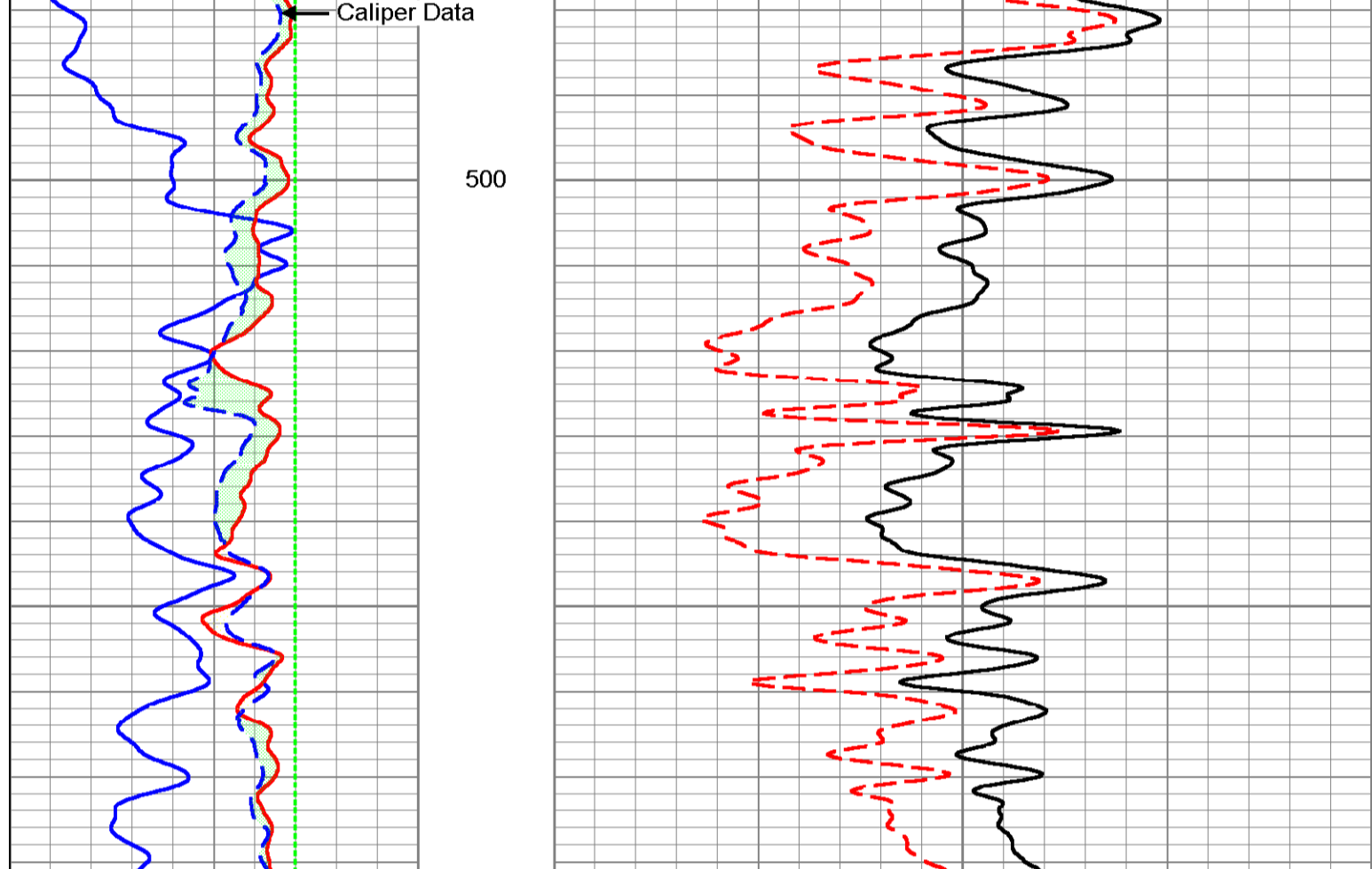
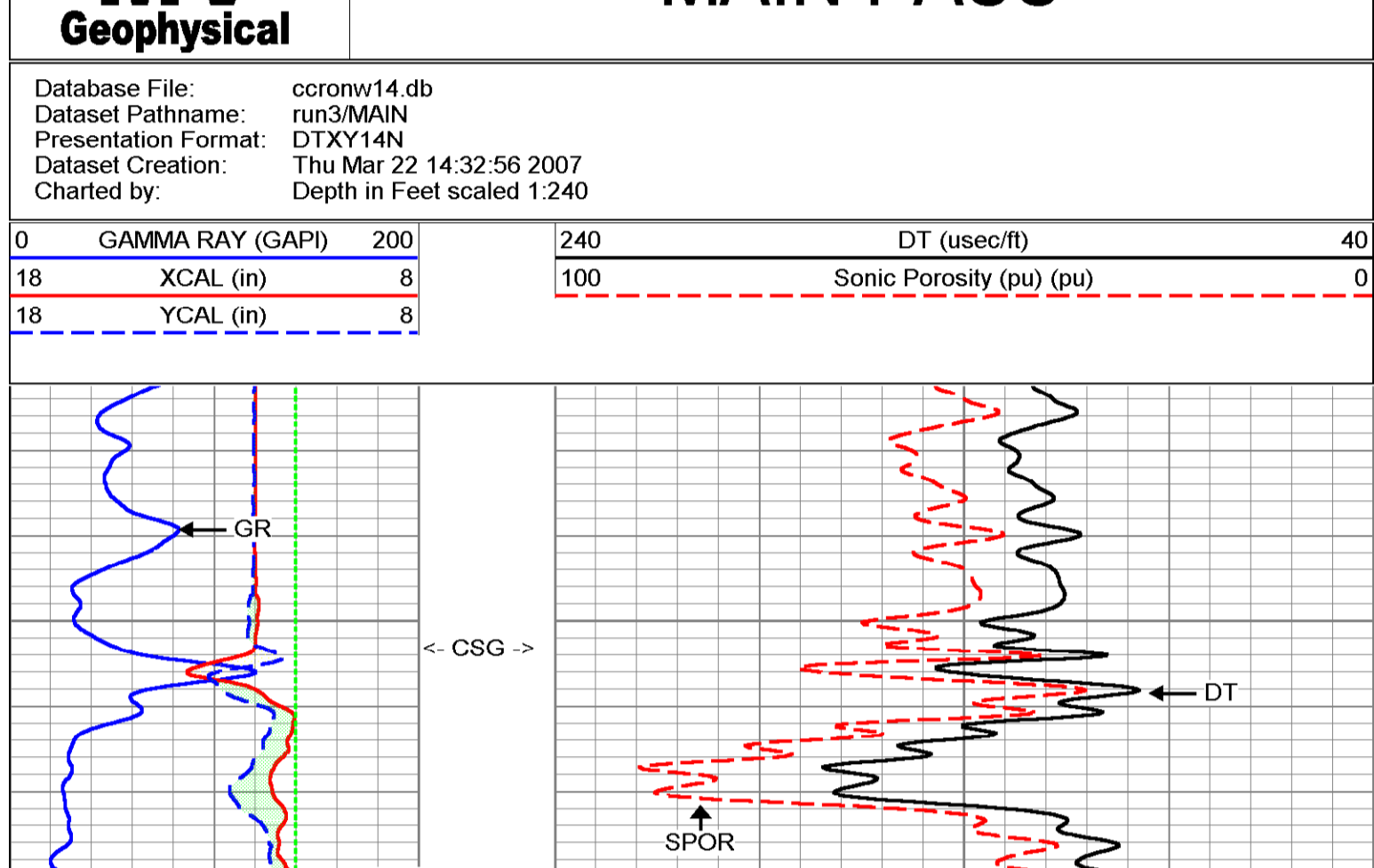
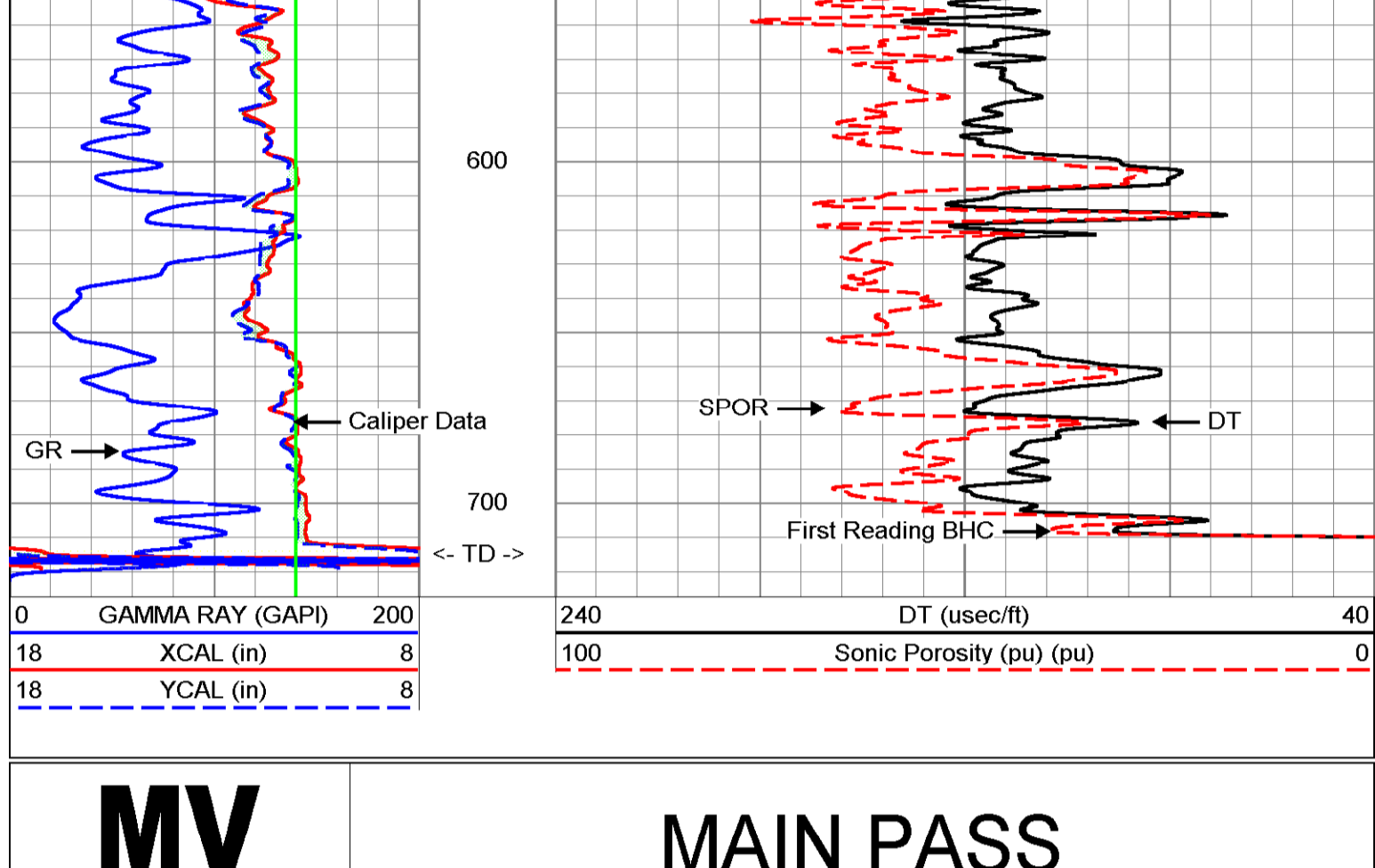
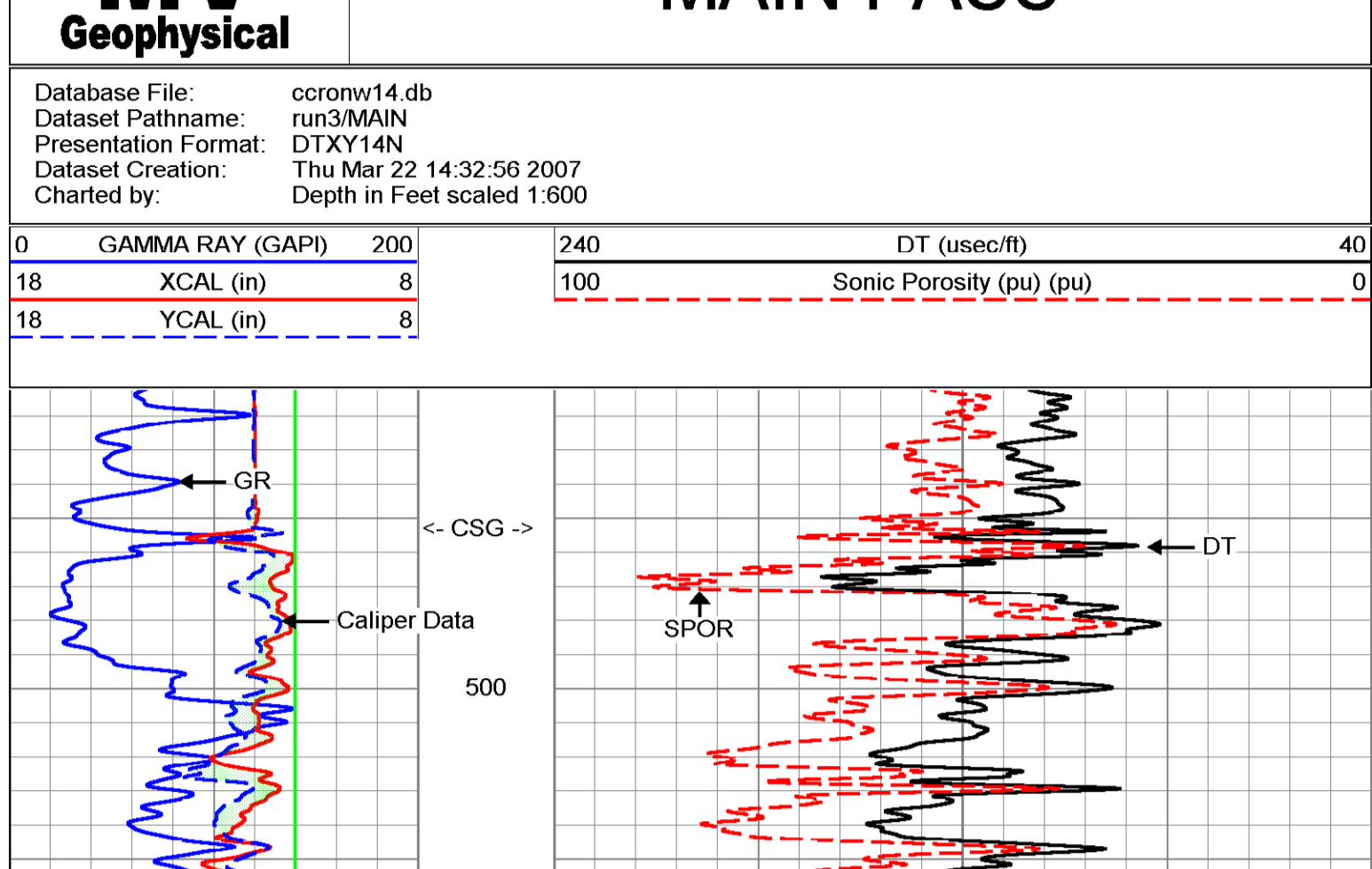
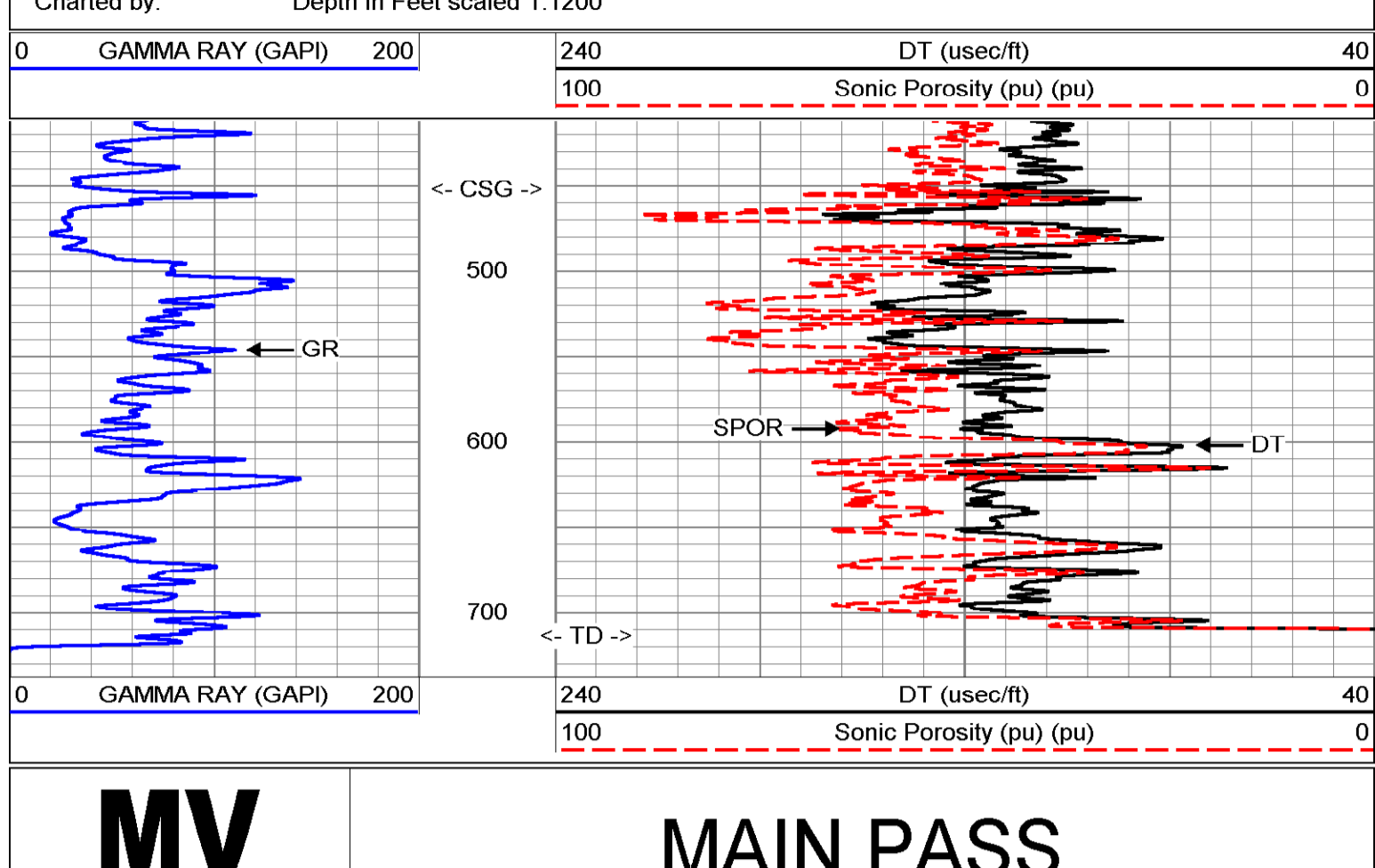
Company	Diversified Drilling Corp.	Well	NW 14N
Field	Cape Coral	County	Lee
State/Prv	Florida	Location	SE corner of NW 20th PL & NW 23rd TER Cape Coral Water Utilities Department
Permit/Drilling	Measured From	Elevation	G.L.
Date	22-MAR-2007	Other Services	X/Y/B/C/D/FLOW/D/H/V
Run Number	THREE	Log Measured From	G.L.
Bottom Logger	715	Drilling Measured From	G.L.
Estimated Cement Top	NA		
Time Well Ready	11:30:32/22/07		
Time Logger on Bottom	18:15:32/22/07		
Equipment Number	EL 4185		
Recorder	S Miller/C Miller		
Witnessed By	G Young (MMH)		
Revised By	Ricky (ODC)		
Run Number	7875	From	50
TWO	18175	To	46
THREE	11*	Weight	714
THREE	453	Surface	715 LOGGING
Caplog Record	320	Top	37.7 WFT
Surfaces String	12-FRP	Bottom	47
Production String		Surface	453
Production String	2067078	Field No.	490 No.

<<< Fold Here >>>

All interpretations are opinions based on inferences from electrical or other measurements and we cannot and do not guarantee the accuracy or correctness of any interpretation, and we shall not, except in the case of gross or willful negligence on our part, be liable or responsible for any loss, costs, damages, or expenses incurred or sustained by anyone resulting from any interpretation made by any of our officers, agents or employees. These interpretations are also subject to our general terms and conditions set out in our current Price Schedule.

Comments

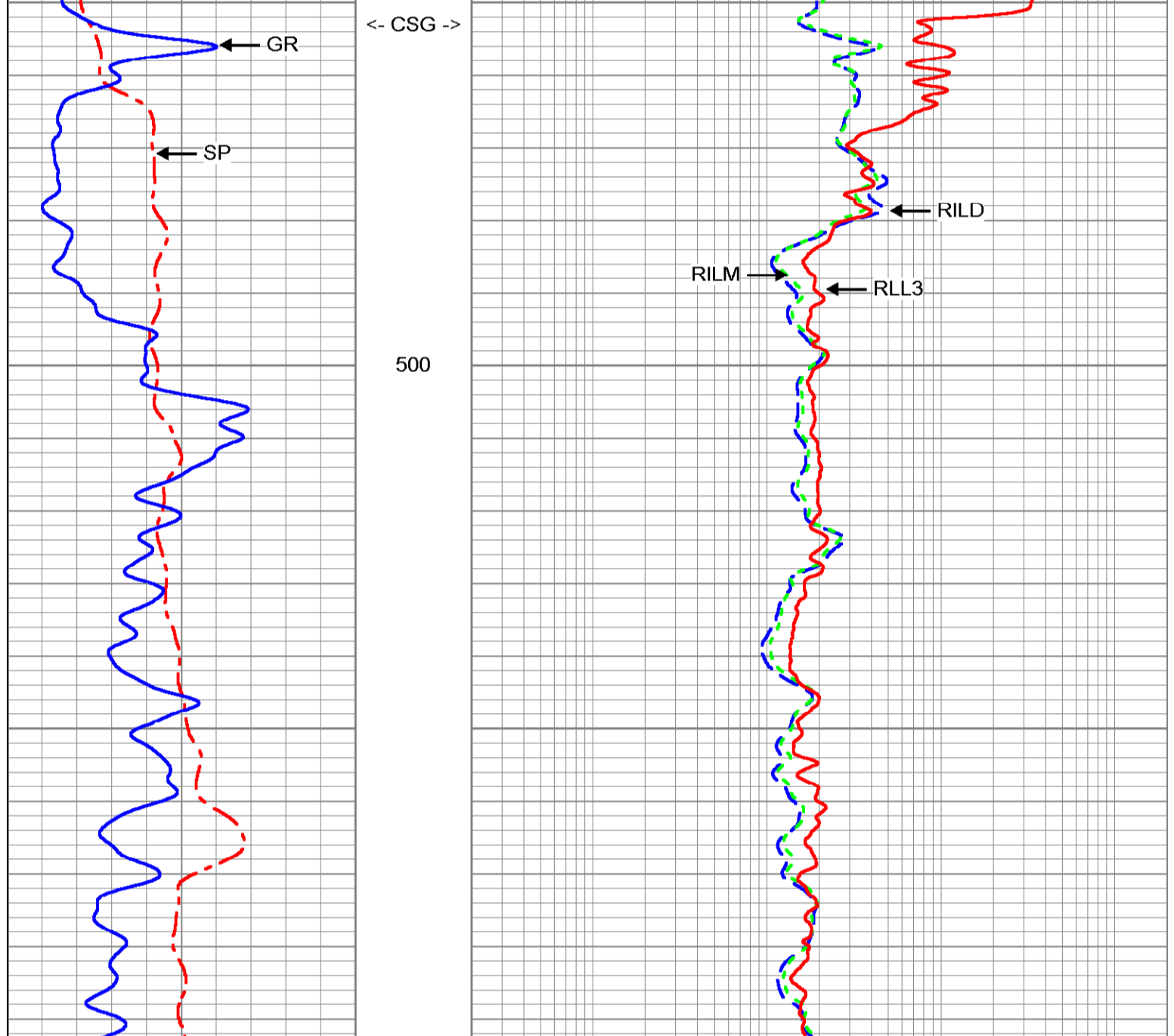
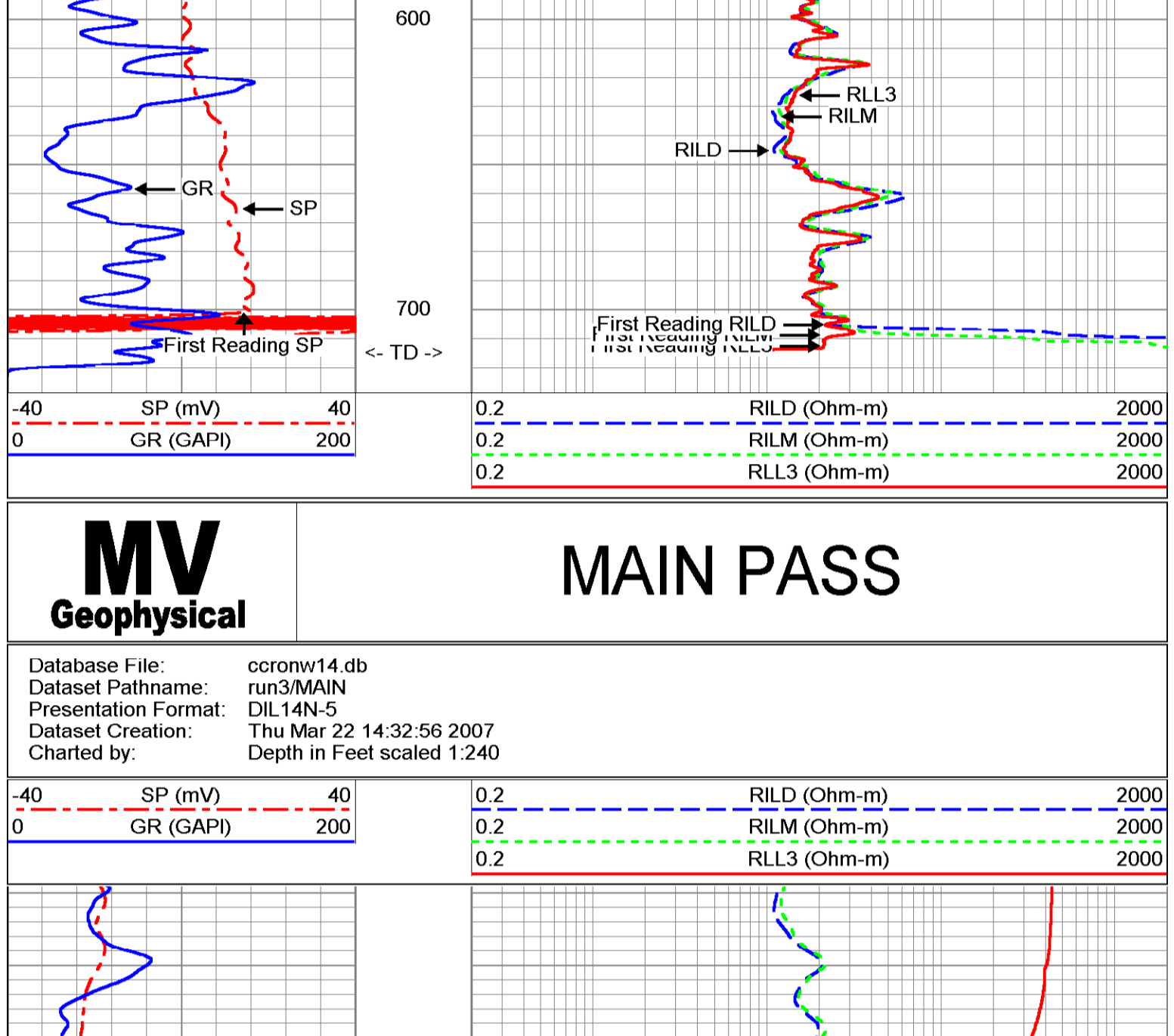
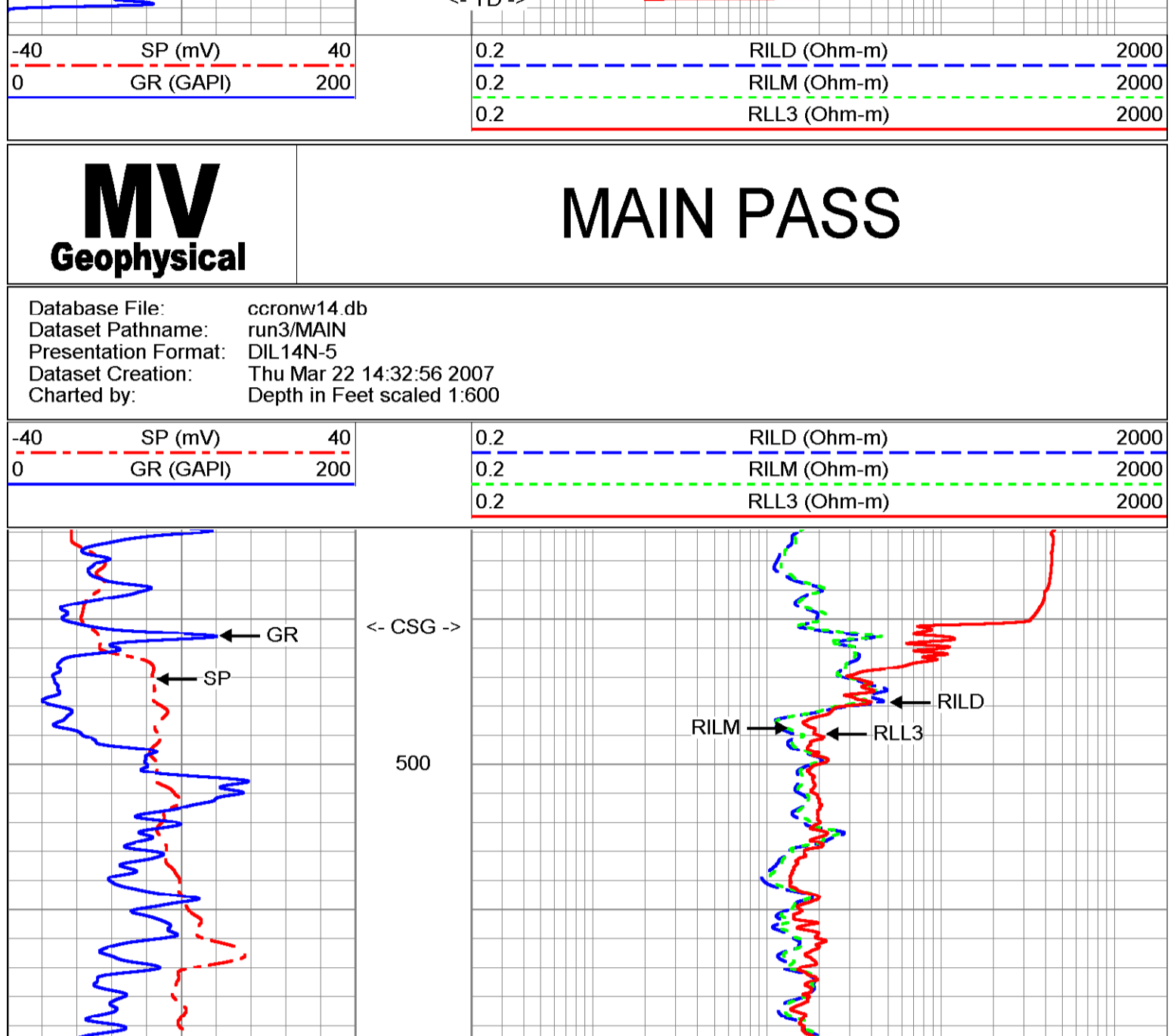
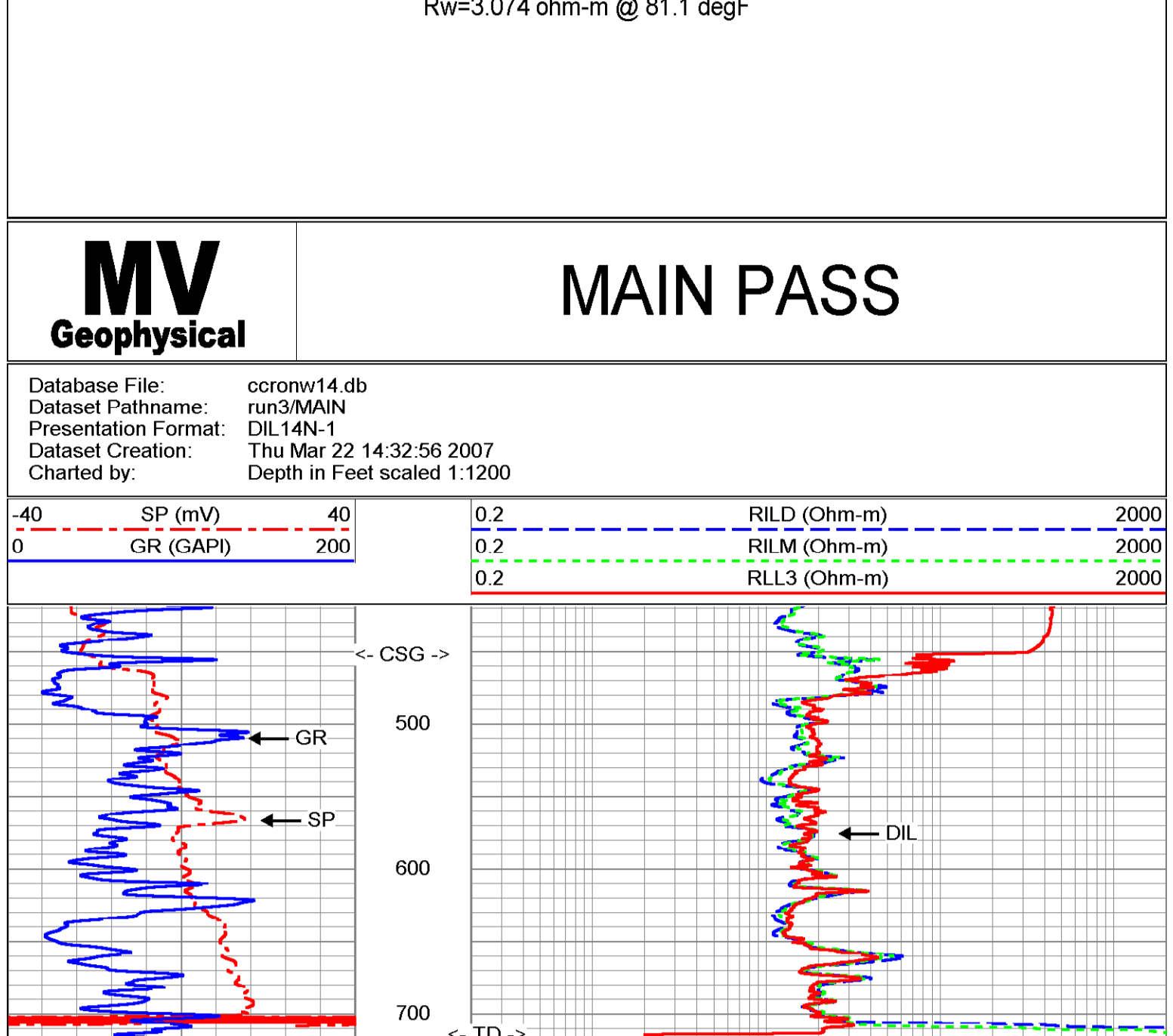
Sonic Porosity was run on a Limestone Matrix (=47.5)



Dataset: run3/pass22
 Total Length: 16.00 ft
 Total Weight: 127.00 lb
 O.D.: 3.50 in

Company	Diversified Drilling Corp.
Well	NW 14N
Field	Cape Coral
County	Lee
State/Prv	Florida
Location	SE corner of NW 20th PL & NW 23rd TER Cape Coral Water Utilities Department MWH
Company	Diversified Drilling Corporation
Well	NW 14N
Field	Cape Coral
County	Lee
State/Prv	Florida
Other Services	X/Y/G/R DIL FCT/BHC FLOW/DHTV
Permanent Datum	G.L.
Log Measured From	G.L.
Drilling Measured From	G.L.
Elevation	
K.B.	
D.L.	
Elevation	
Date	22-MAR-2007
Run Number	THREE
Depth Driver	714
Depth Logger	715
Tool On Interval	453
Open Hole Size	11"
Type Fluid	H2O
Density / Viscosity	NA/NA
Max. Recorded Temp	NA
Estimated Cement Top	
Time Logset on Bottom	11:30:32/2007
Time Logset on Interval	13:13:32/2007
Location	FL 14N-5
Location Number	FI 14N-5
Recorded By	S. Miercic Miller
Witnessed By	G. Young (MWH)
Recorded By	Ricky (DDC)
Witnessed By	
Run Number	ONE
Depth Driver	715
Depth Logger	714
Tool On Interval	453
Open Hole Size	11"
Type Fluid	H2O
Density / Viscosity	NA/NA
Max. Recorded Temp	NA
Estimated Cement Top	
Time Logset on Bottom	11:30:32/2007
Time Logset on Interval	13:13:32/2007
Location	FL 14N-5
Location Number	FI 14N-5
Recorded By	S. Miercic Miller
Witnessed By	G. Young (MWH)
Recorded By	Ricky (DDC)
Witnessed By	
Run Number	THREE
Depth Driver	715
Depth Logger	714
Tool On Interval	453
Open Hole Size	11"
Type Fluid	H2O
Density / Viscosity	NA/NA
Max. Recorded Temp	NA
Estimated Cement Top	
Time Logset on Bottom	11:30:32/2007
Time Logset on Interval	13:13:32/2007
Location	FL 14N-5
Location Number	FI 14N-5
Recorded By	S. Miercic Miller
Witnessed By	G. Young (MWH)
Recorded By	Ricky (DDC)
Witnessed By	

Comments: Rw=3.074 ohm-m @ 81.1 degF



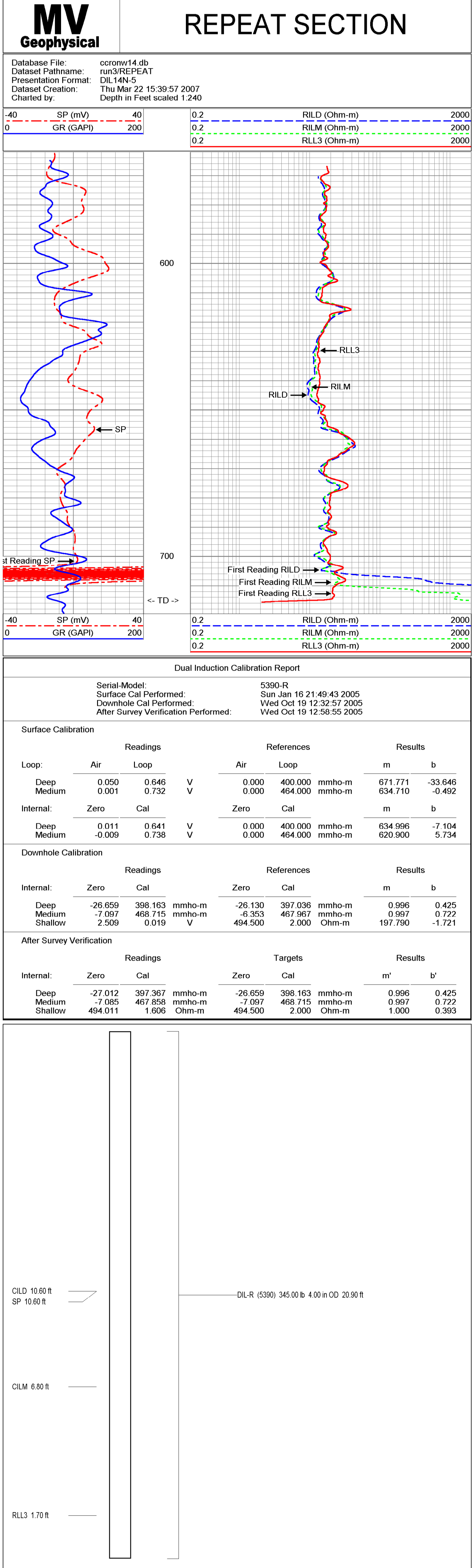
Dual Induction Calibration Report

Serial-Model: 5390-R
 Surface Cal Performed: Sun Jan 16 21:49:43 2005
 Downhole Cal Performed: Wed Oct 19 12:32:57 2005
 After Survey Verification Performed: Wed Oct 19 12:58:55 2005

Surface Calibration			References		Results	
Loop:	Air	Loop	Air	Loop	m	b
Deep	0.050	0.646	0.000	400.000	mmho-m	671.771
Medium	0.001	0.732	0.000	464.000	mmho-m	634.710
Internal:	Zero	Cal	Zero	Cal	m	b
Deep	0.011	0.641	0.000	400.000	mmho-m	634.996
Medium	-0.009	0.738	0.000	464.000	mmho-m	620.900

Downhole Calibration			References		Results	
Internal:	Zero	Cal	Zero	Cal	m	b
Deep	-26.659	398.163	-26.130	397.036	mmho-m	0.996
Medium	-7.097	468.715	-6.353	467.967	mmho-m	0.997
Shallow	2.509	0.019	494.500	2.000	Ohm-m	197.790

After Survey Verification			Targets		Results	
Internal:	Zero	Cal	Zero	Cal	m'	b'
Deep	-27.012	397.367	-26.659	398.163	mmho-m	0.996
Medium	-7.085	467.858	-7.097	468.715	mmho-m	0.997
Shallow	494.011	1.606	494.500	2.000	Ohm-m	1.000



MV Geophysical

FLUID CONDUCTIVITY TEMPERATURE LOG

Company	Diversified Drilling Corp.	Company	Diversified Drilling Corporation
Well	NW 14N	Well	NW 14N
Field	Cape Coral	Field	Cape Coral
County	Lee	County	Lee
State/Prv	Florida	State/Prv	Florida
Location	SE corner of NW 20th PL & NW 23st TER Cape Coral Water Utilities Department	Location	SE corner of NW 20th PL & NW 23st TER Cape Coral Water Utilities Department
Other Services		Other Services	XY/GR/DL FCT/BHC FLOW/DHTV
Date	22-MAR-2007	Date	22-MAR-2007
Run Number	THREE	Run Number	THREE
Well	NW 14N	Well	NW 14N
Depth Driller	714	Depth Driller	714
Depth Logger	715	Depth Logger	715
Bottom Logged Interval	713	Bottom Logged Interval	713
Top Log Interval	395	Top Log Interval	395
Open Hole Size	11"	Open Hole Size	11"
Type Fluid	H2O	Type Fluid	H2O
Density /Viscosity	NA/NA	Density /Viscosity	NA/NA
Max. Recorded Temp.	na	Max. Recorded Temp.	na
Estimated Cement Top	11.30.3222/2007	Estimated Cement Top	11.30.3222/2007
Time Well Ready	11.30.3222/2007	Time Well Ready	11.30.3222/2007
Time Logger on Bottom	11.30.3222/2007	Time Logger on Bottom	11.30.3222/2007
Equipment Number	MNCS-1	Equipment Number	MNCS-1
Location	FL Myers	Location	FL Myers
Recorded By	S.Miller/C.Miller	Recorded By	S.Miller/C.Miller
Witnessed By	G.Young (MWH)	Witnessed By	G.Young (MWH)
		Checked By	Ricky (DDC)

Boisyle Record	Run Number	7875	To	554
Bit	From	42	To	454
TV/O	42	To	466	
18.75"	714			
11"	453			

Size	4.2"	Weight	4.2
Surface String	12" FRP	Top SURFACE	4.2
Production String	12" ID	Bottom SURFACE	4.2
Size	4.2"	Weight	4.2
Surface String	12" FRP	Top SURFACE	4.2
Production String	12" ID	Bottom SURFACE	4.2

<<< Fold Here >>>

All interpretations are opinions based on inferences from electrical or other measurements and we cannot and do not guarantee the accuracy or correctness of any interpretation, and we shall not, except in the case of gross or willful negligence on our part, be liable or responsible for any loss, costs, damages, or expenses incurred or sustained by anyone resulting from any interpretation made by any of our officers, agents or employees. These interpretations are also subject to our general terms and conditions set out in our current Price Schedule.

Comments

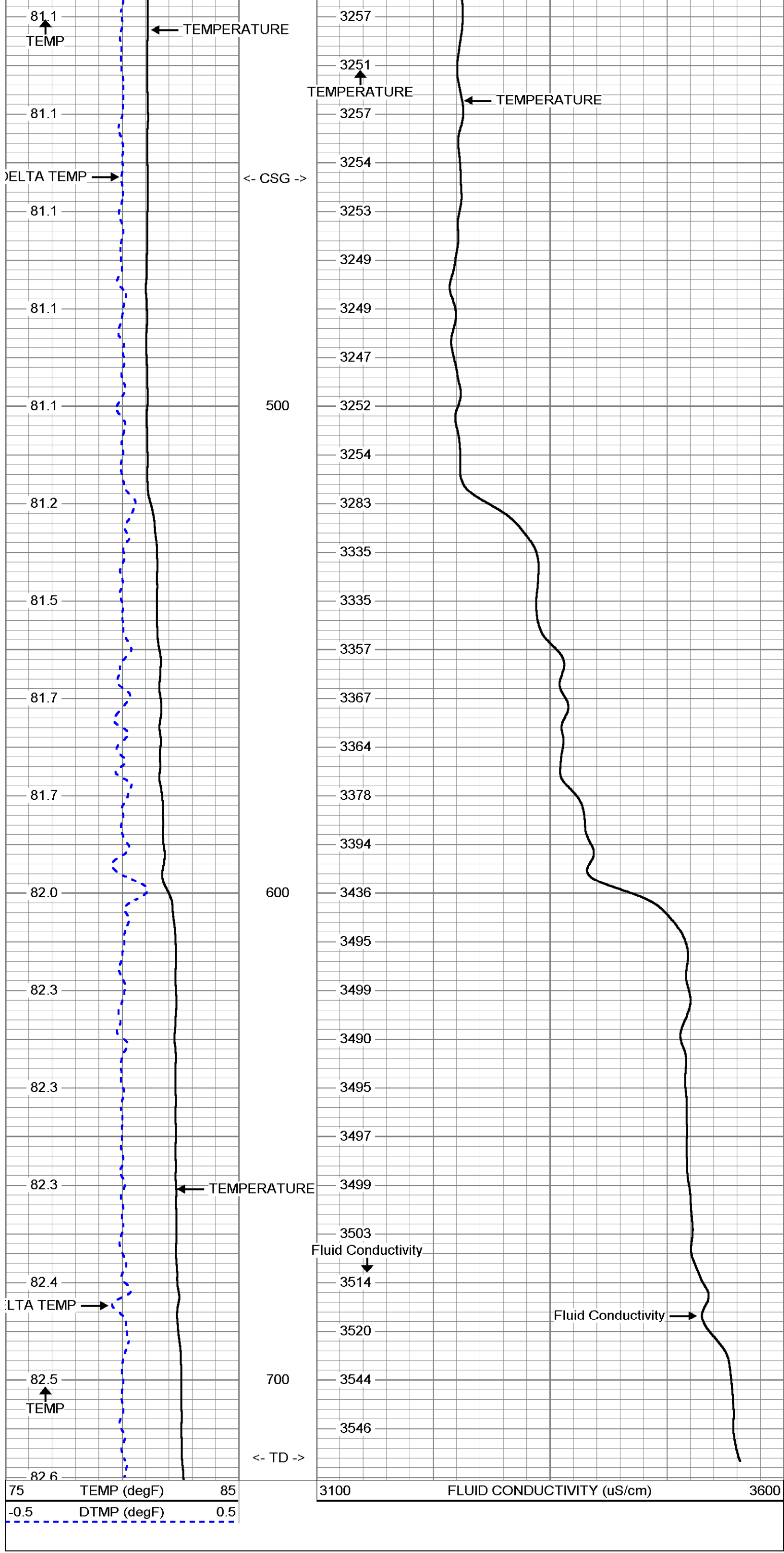
STATIC and DYNAMIC Down passes were performed.
 Cw=3253 uS/cm @ 81.1 degF (Dynamic Sample). Q ~550 gpm.
 FLUID RESISTIVITY CALIBRATION REPORT (Performed: 21-MAR-07 16:45)
 uS/cm CPS
 2041.8 2922.54
 6882.5 2758.68
 14892.1 2236.56
 TEMPERATURE CALIBRATION REPORT (Performed: 21-MAR-07 10:15)
 DEG-F CPS
 38.1 231.25
 144.2 6959.25

MV Geophysical

DYNAMIC FCT DOWN

Database File: ccronw14.db
 Dataset Pathname: run3/DFCT
 Presentation Format: FCT14N
 Dataset Creation: Thu Mar 22 10:14:56 2007
 Charted by: Depth in Feet scaled 1:240

75	TEMP (degF)	85	3100	FLUID CONDUCTIVITY (uS/cm)	3600
-0.5	DTMP (degF)	0.5			

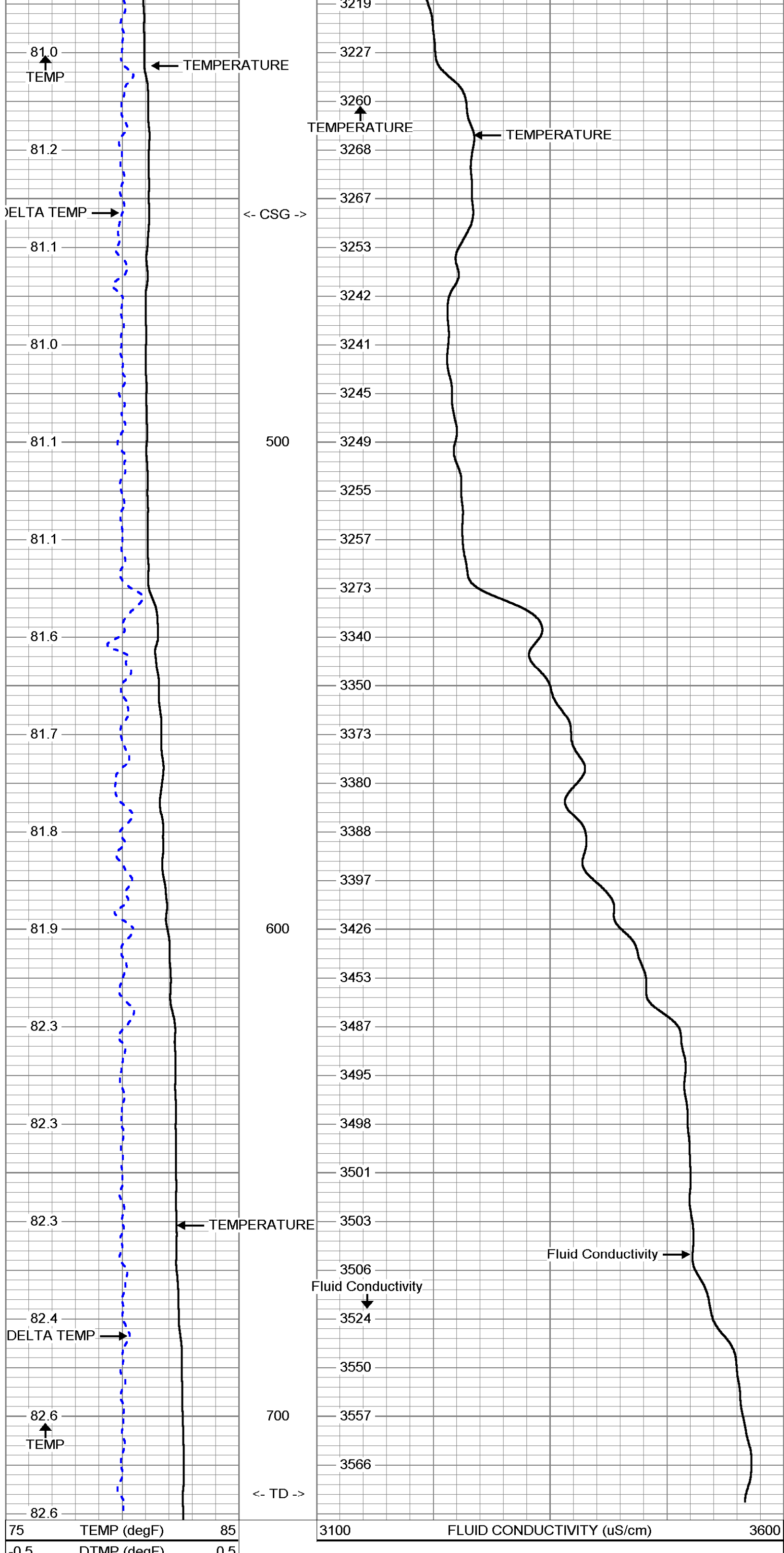


MV Geophysical

STATIC FCT DOWN

Database File: ccronw14.db
 Dataset Pathname: run3/SFCT
 Presentation Format: FCT14N
 Dataset Creation: Thu Mar 22 10:24:24 2007
 Charted by: Depth in Feet scaled 1:240

75	TEMP (degF)	85	3100	FLUID CONDUCTIVITY (uS/cm)	3600
-0.5	DTMP (degF)	0.5			



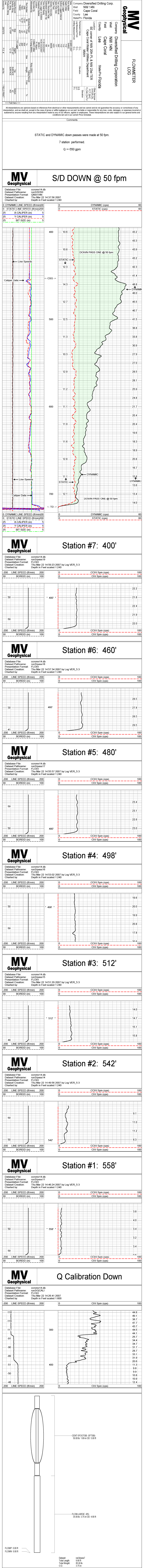
CCL 4.46 ft

GR#2 1.15 ft

TEMP 0.10 ft

- CCL-MVGS 1.9 (MV01)
8.00 lb 1.90 in OD 1.33 ft
- GR #2-RTSB (MV01B)
10.00 lb 1.90 in OD 3.33 ft
- TEMP-RTS (MV01)
2.00 lb 1.90 in OD 0.46 ft

Dataset: run3/pass4
 Total Length: 5.12 ft
 Total Weight: 20.00 lb
 O.D.: 1.90 in



Diversified Drilling Corporation
NW 14N
Cape Coral
Lee
Florida

Company
Well
Field
County
State/Private
Cape Coral
Lee
Cape Coral
Lee

Location
SE corner of NW 20th Pl & NW 23rd TER
Cape Coral Water Utilities Department
MMWH

Permanent Datum
Log Measured From
Drilling Measured From
G.L.
G.L.
G.L.

Elevation
K.E.
D.F.
G.L.

Date
Run Number
Depth
Bottom Logged Interval
Tool Log Interval

Type
Type of Assembly
Max Recorded Temp.
Estimated Cement Top

Time Logged on Bottom
FLOWS
FLOWS
FLOWS

Run Number
TIME
THREE
THREE

Open Hole Size
11"

Well Name
TWO
THREE

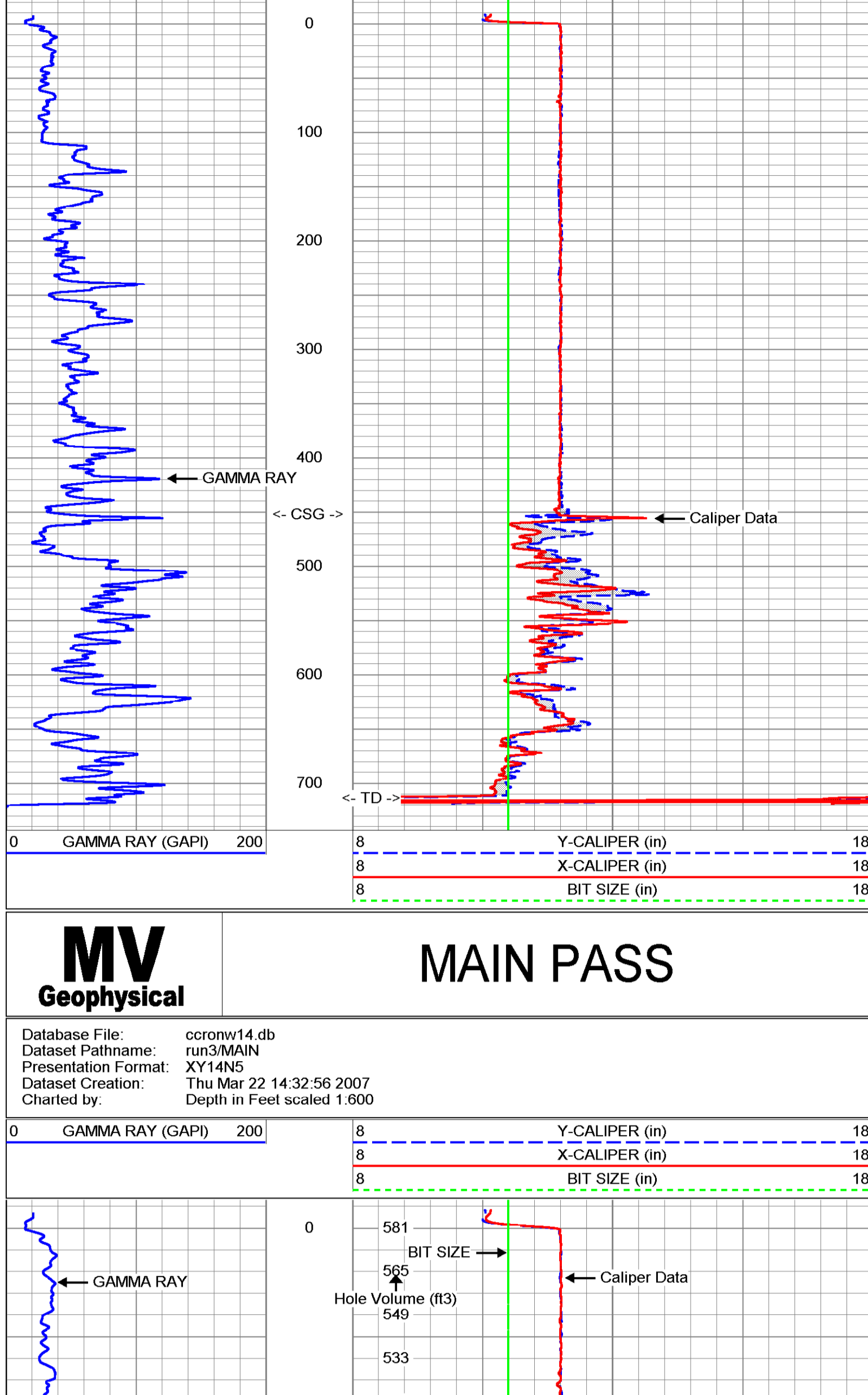
All interpretations are opinions based on inferences from electrical or other measurements and we cannot and do not guarantee the accuracy or correctness of any interpretation, and we shall not, except in the case of gross or willful negligence on our part, be liable or responsible for any loss, costs, damages, or expenses incurred or sustained by anyone resulting from any interpretation made by any of our officers, agents or employees. These interpretations are also subject to our general terms and conditions set out in our current Price Schedule.

Comments

X-Y Caliper Arm Extensions: 51"

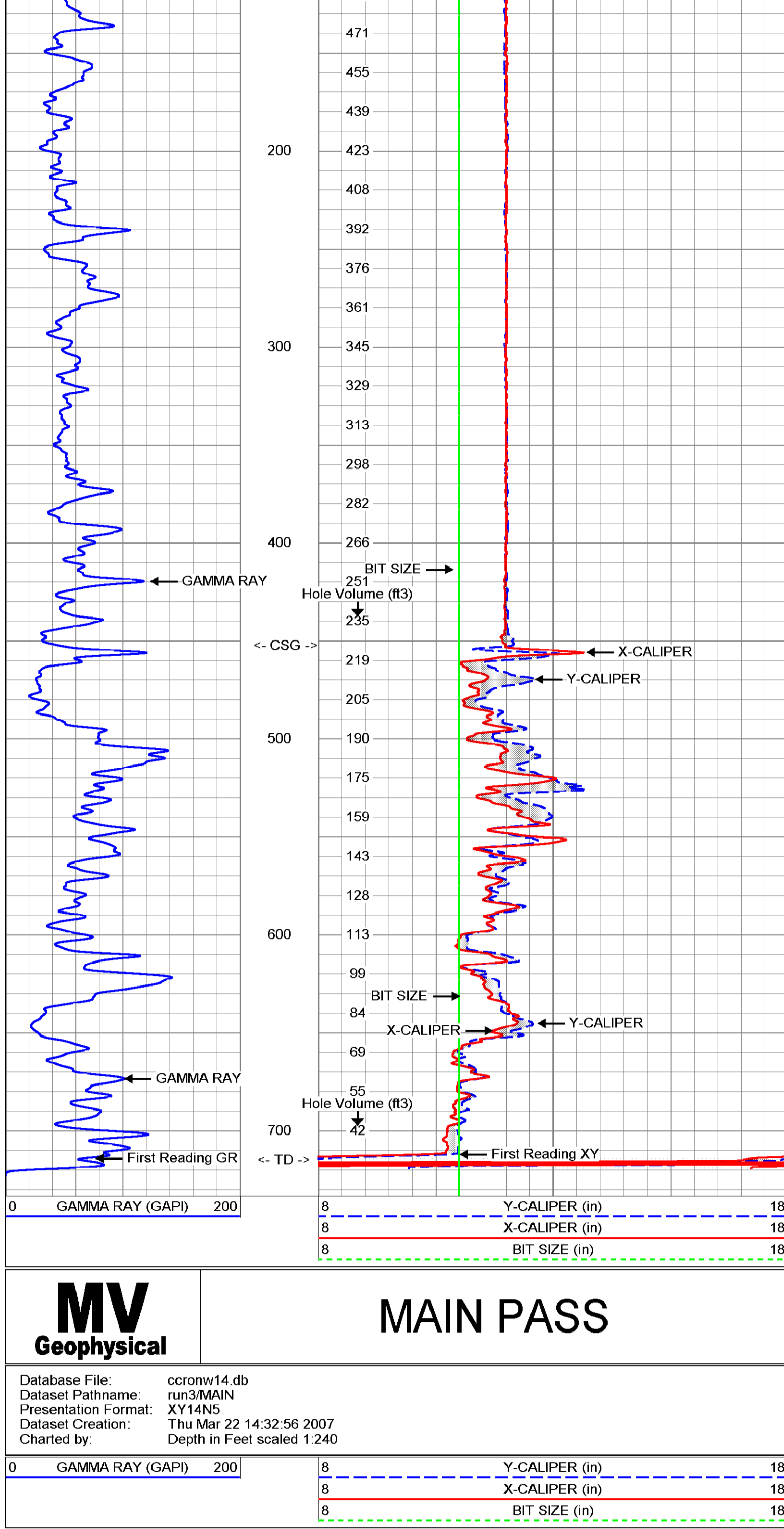
MV Geophysical **MAIN PASS**

Database File: ccoronw14.db
Dataset Pathname: run3/MAIN
Presentation Format: XY14N1
Dataset Creation: Thu Mar 22 14:32:56 2007
Charted by: Depth in Feet scaled 1:1200



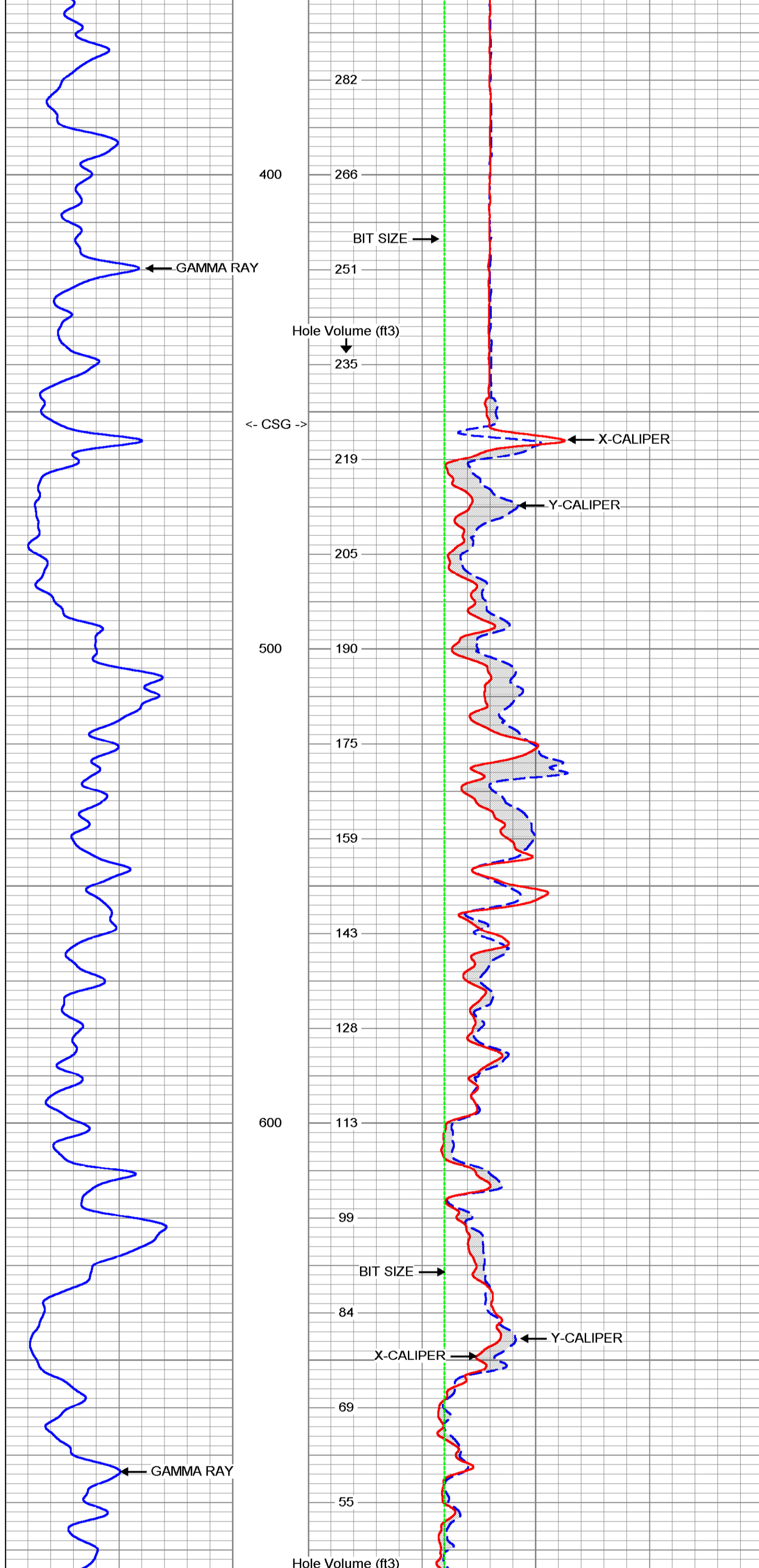
MV Geophysical **MAIN PASS**

Database File: ccoronw14.db
Dataset Pathname: run3/MAIN
Presentation Format: XY14N5
Dataset Creation: Thu Mar 22 14:32:56 2007
Charted by: Depth in Feet scaled 1:600



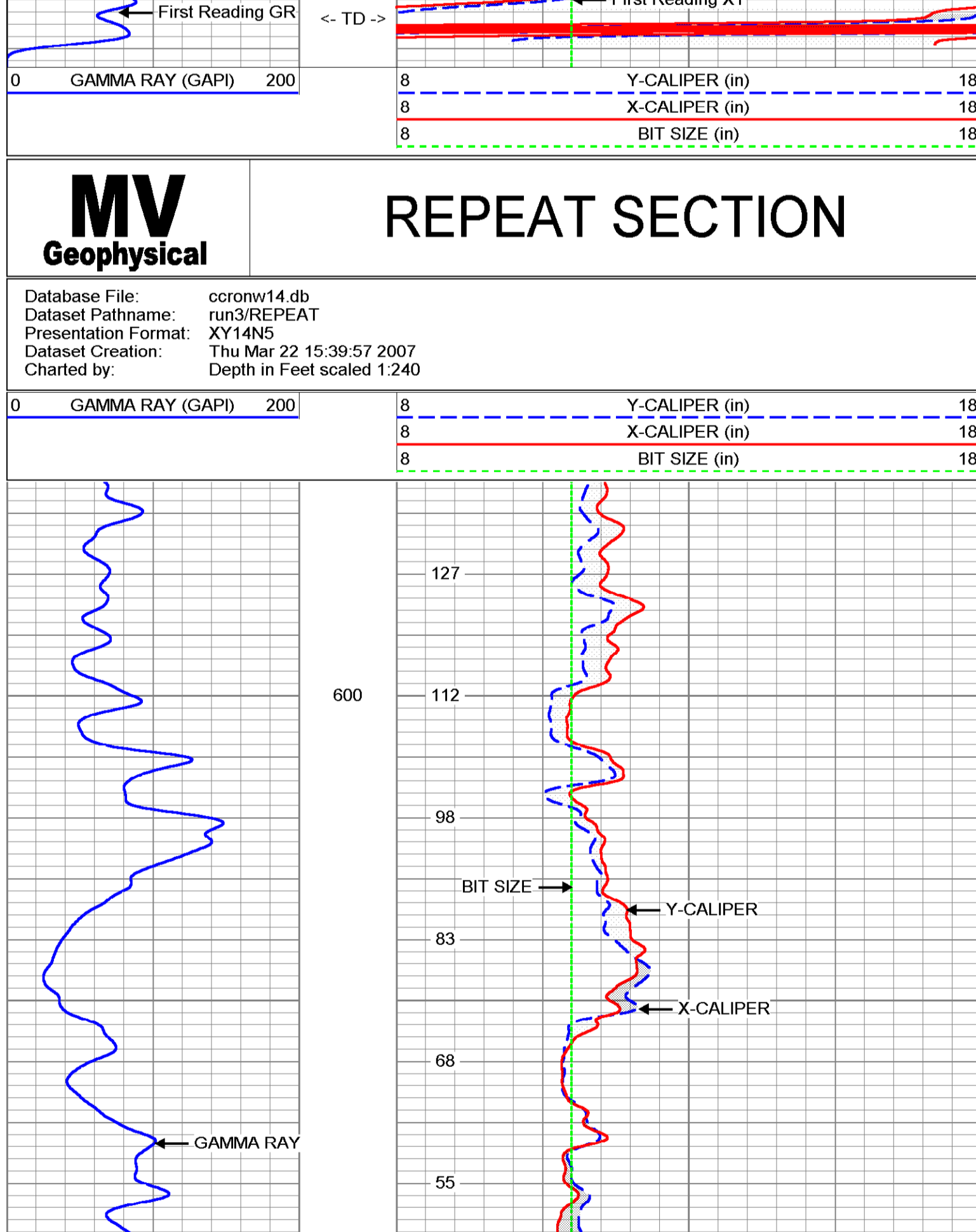
MV Geophysical **MAIN PASS**

Database File: ccoronw14.db
Dataset Pathname: run3/MAIN
Presentation Format: XY14N5
Dataset Creation: Thu Mar 22 14:32:56 2007
Charted by: Depth in Feet scaled 1:240



MV Geophysical **REPEAT SECTION**

Database File: ccoronw14.db
Dataset Pathname: run3/REPEAT
Presentation Format: XY14N5
Dataset Creation: Thu Mar 22 15:39:57 2007
Charted by: Depth in Feet scaled 1:240



Gamma Ray Calibration Report

Serial Number: MV01B
Tool Model: RTSB
Performed: Thu Mar 22 09:23:13 2007

Calibrator Value: 120 GAPI

Background Reading: 18.451 cps
Calibrator Reading: 183.24 cps

Sensitivity: 0.728204 GAPI/cps

XY Caliper Calibration Report

Serial Number: 011
Tool Model: XYCL
Performed: Thu Mar 22 13:21:54 2007

Small Ring: 12 in
Large Ring: 51 in

X Caliper: 692.3 cps
Large Ring: 1109 cps

Y Caliper: 636.2 cps
Large Ring: 1130 cps

Gain: 0.0935925
Offset: -52.7941

Y-Caliper: 0.0789793
Offset: -38.2467

Gamma Ray Calibration Report

Serial Number: MV01B
Tool Model: RTSB
Performed: Thu Mar 22 09:23:13 2007

Calibrator Value: 120 GAPI

Background Reading: 18.451 cps
Calibrator Reading: 183.24 cps

Sensitivity: 0.728204 GAPI/cps

XY Caliper Calibration Report

Serial Number: 011
Tool Model: XYCL
Performed: Thu Mar 22 13:21:54 2007

Small Ring: 12 in
Large Ring: 51 in

X Caliper: 692.3 cps
Large Ring: 1109 cps

Y Caliper: 636.2 cps
Large Ring: 1130 cps

Gain: 0.0935925
Offset: -52.7941

Y-Caliper: 0.0789793
Offset: -38.2467

Gamma Ray Calibration Report

Serial Number: MV01B
Tool Model: RTSB
Performed: Thu Mar 22 09:23:13 2007

Calibrator Value: 120 GAPI

Background Reading: 18.451 cps
Calibrator Reading: 183.24 cps

Sensitivity: 0.728204 GAPI/cps

XY Caliper Calibration Report

Serial Number: 011
Tool Model: XYCL
Performed: Thu Mar 22 13:21:54 2007

Small Ring: 12 in
Large Ring: 51 in

X Caliper: 692.3 cps
Large Ring: 1109 cps

Y Caliper: 636.2 cps
Large Ring: 1130 cps

Gain: 0.0935925
Offset: -52.7941

Y-Caliper: 0.0789793
Offset: -38.2467