

Company	Diversified Drilling Corp.	Location	SE corner of Kismet Pkwy & NW 14th Ave Cape Coral Water Utilities Department MWH	Other Services	XVGR, BHC DIL, FLOW DHTV
Well	NW 16N	Permanent Datum	G.L.	Elevation	
Field	Cape Coral	Log Measured From	G.L.		
County	Lee	Drilling Measured From	G.L.		
State/Prv	Florida				
Company	Diversified Drilling Corporation	Date	18-MAY-2006		
Well	NW 16N	Run Number	THREE		
Field	Cape Coral	Depth Driller	636		
County	Lee	Depth Logger	636		
State/Prv	Florida	Bottom Logged Interval	636		
		Top Log Interval	397		
		Open Hole Size	112		
		Type Fluid	H2O		
		Density / Viscosity	NA/NA		
		Max. Recorded Temp.	NA		
		Estimated Cement Top	NA		
		Time Well Ready	09:45 5/18/2006		
		Time Logger on Bottom	14:00 5/18/2006		
		Location	MWGS-1		
		Equipment Number	FI 11meters		
		Recorded By	S. Miller		
		Witnessed By	G. Young (MWH)		
		Benhole Record		S. Randazzo (MWH)	Dan (DDC)
Run Number	THREE	Bit	42"	From	To
ONE	THREE	Bit	42"	From	To
TWO	THREE	Bit	42"	From	To
THREE	THREE	Bit	42"	From	To
Casing Record	Size	Wgt/Ft	Top	Bottom	
Surface String	20"	.375" WT	SURFACE	42'	
Prod. String	12" FRP		SURFACE		
Production String					
Liner					
Invoice No.	20006143	P.O. #.		Job No.	

<<< Fold Here >>>

All interpretations are opinions based on inferences from electrical or other measurements and we cannot and do not guarantee the accuracy or correctness of any interpretation, and we shall not, except in the case of gross or willful negligence on our part, be liable or responsible for any loss, costs, damages, or expenses incurred or sustained by anyone resulting from any interpretation made by any of our officers, agents or employees. These interpretations are also subject to our general terms and conditions set out in our current Price Schedule.

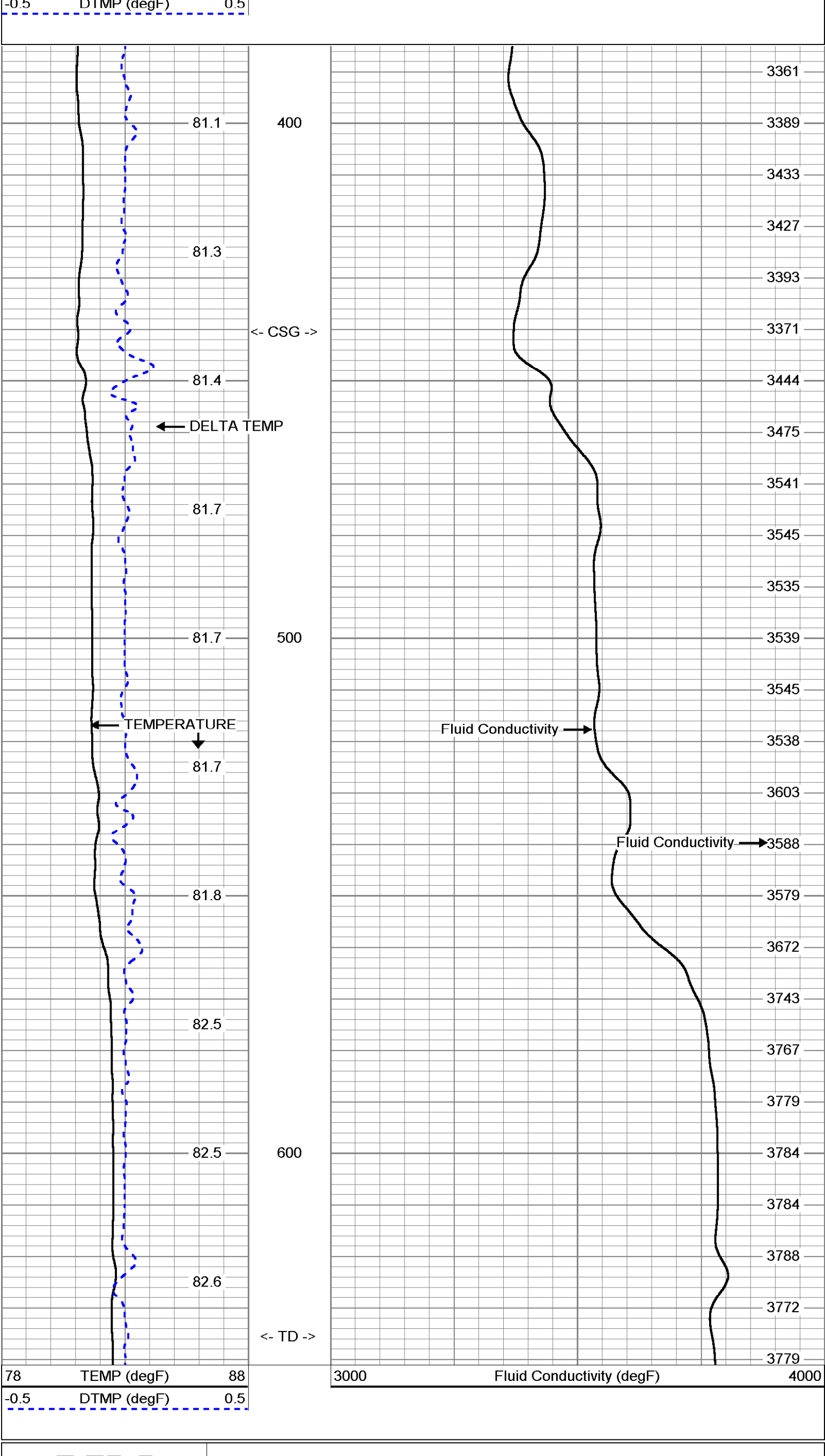
Comments

STATIC and DYNAMIC DOWN passes were performed.
 Cw=3411 uS/cm @ 82.2 degF (Dynamic Sample). Q ~1000 gpm.
 FLUID RESISTIVITY CALIBRATION REPORT (Performed: 12-MAY-06 12:45)
 uS/cm CPS
 3027.24 2925.48
 5828.5 2560.28
 14878.2 2224.32
 TEMPERATURE CALIBRATION REPORT (Performed: 12-MAY-06 12:15)
 DEG-F CPS
 34.3 2346.47
 143.7 6969.24

MV Geophysical

DYNAMIC FCT DOWN

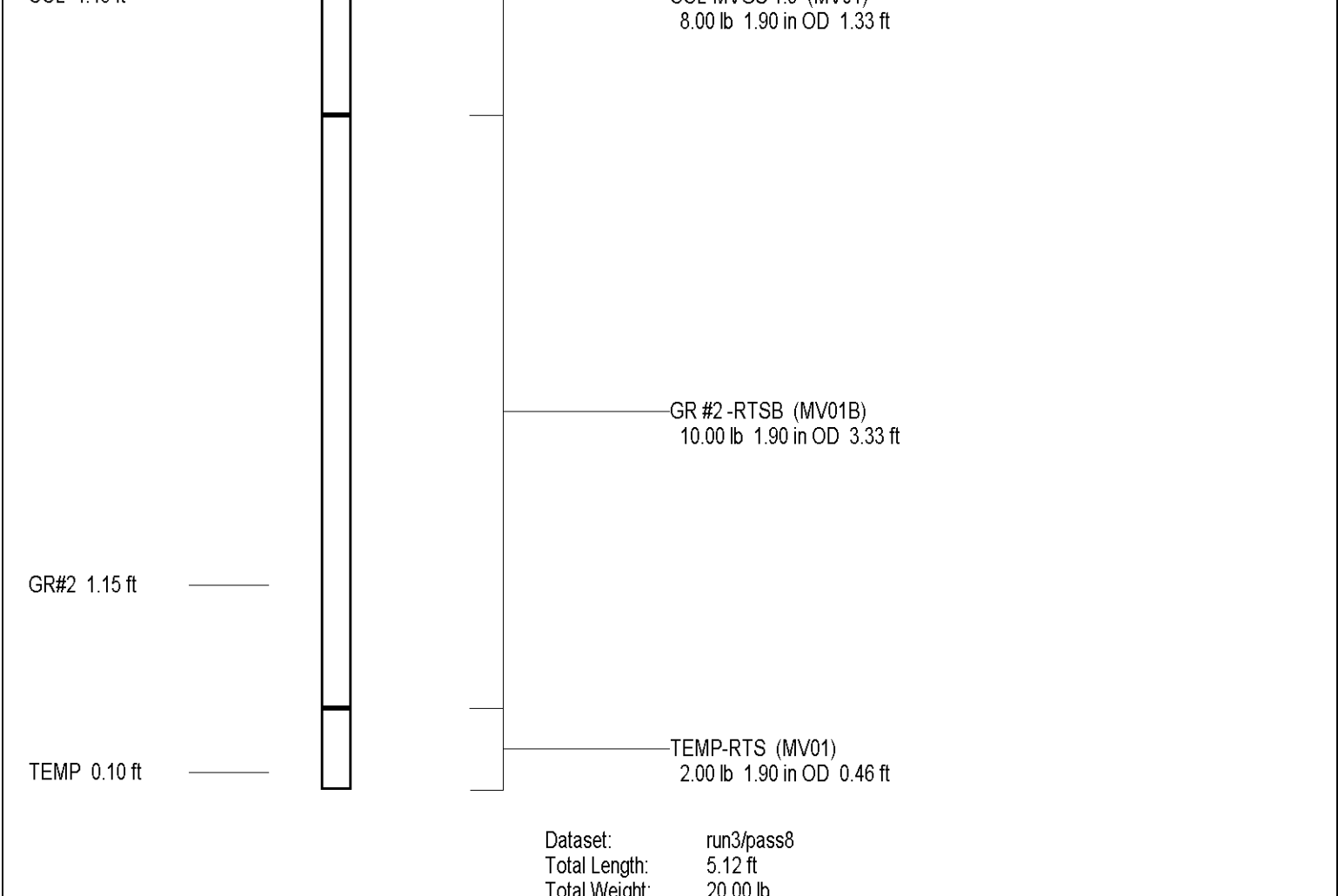
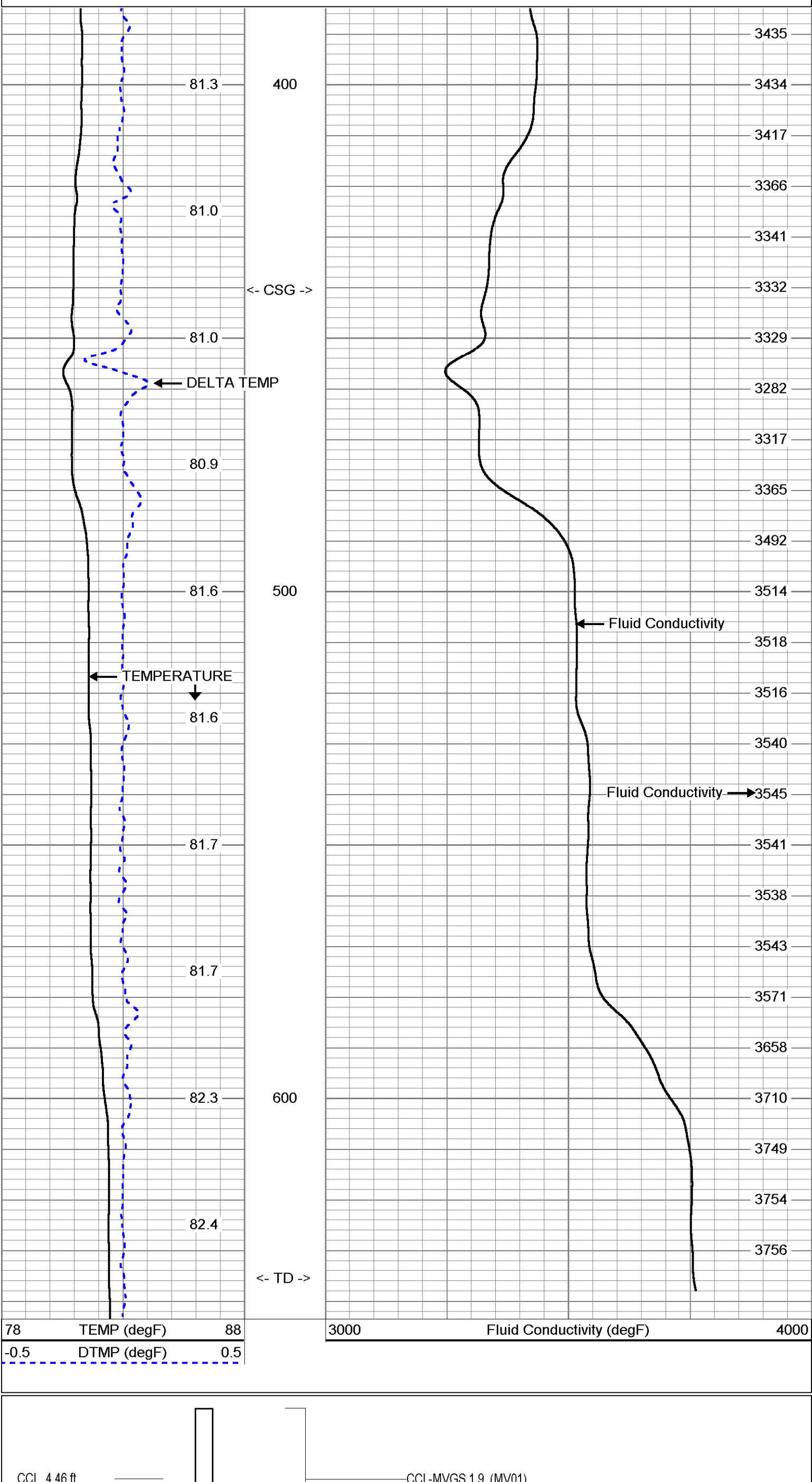
Database File: ccro16n.db
 Dataset Pathname: run3/DFCT
 Presentation Format: FCTCC16N
 Dataset Creation: Thu May 18 14:47:03 2006
 Charted by: Depth in Feet scaled 1:240



MV Geophysical

STATIC FCT DOWN

Database File: ccro16n.db
 Dataset Pathname: run3/SFCT
 Presentation Format: FCTCC16N
 Dataset Creation: Thu May 18 14:43:44 2006
 Charted by: Depth in Feet scaled 1:240



Company	Diversified Drilling Corp.	Well	NW 16N	Field	Cape Coral	County	Lee	State/Prov	Florida	Location	SE corner of Kismet Pkwy & NW 14th Ave Cape Coral Water Utilities Department	Permanent Datum	G.L.	Elevation	G.L.	Other Services	AVG/BHC DLI/FCI DLH/T
Well	NW 16N	Field	Cape Coral	County	Lee	State/Prov	Florida	Location	SE corner of Kismet Pkwy & NW 14th Ave Cape Coral Water Utilities Department	Permanent Datum	G.L.	Elevation	G.L.	Other Services	AVG/BHC DLI/FCI DLH/T		
Date	18 MAY 2006	Run Number	THREE	Drilling Measured From	18 MAY 2006	Bottom Logged Interval	636'	Open Hole Size	11"	Type of Fluid	MHW	Max. Recorded Temp.	88	Estimated Cement Top	N/A	Time Well Ready	09:45:57 18/2006
Equipment Number	14:45:57 18/2006	Recorded By	S. Miller	Recorded By	S. Miller	Recorded By	S. Miller	Recorded By	S. Miller	Recorded By	S. Miller	Recorded By	S. Miller	Recorded By	S. Miller	Recorded By	S. Miller
Run Number	THREE	Run Length	7:56'	Run From	450'	Run To	528'	Run From	450'	Run To	528'	Run From	450'	Run To	528'	Run From	450'
TWO	1:18:25'	Run Length	4:2'	Run From	445'	Run To	445'	Run From	445'	Run To	445'	Run From	445'	Run To	445'	Run From	445'
ONE	11"	Run Length	4:40'	Run From	440'	Run To	440'	Run From	440'	Run To	440'	Run From	440'	Run To	440'	Run From	440'
Bit Size	3 7/8" WF	Bit Size	3 7/8" WF	Bit Size	3 7/8" WF	Bit Size	3 7/8" WF	Bit Size	3 7/8" WF	Bit Size	3 7/8" WF	Bit Size	3 7/8" WF	Bit Size	3 7/8" WF	Bit Size	3 7/8" WF
Caliper	20"	Caliper	20"	Caliper	20"	Caliper	20"	Caliper	20"	Caliper	20"	Caliper	20"	Caliper	20"	Caliper	20"
Production Station	12" ID	Production Station	12" ID	Production Station	12" ID	Production Station	12" ID	Production Station	12" ID	Production Station	12" ID	Production Station	12" ID	Production Station	12" ID	Production Station	12" ID
Log Number	2006143	Log Number	2006143	Log Number	2006143	Log Number	2006143	Log Number	2006143	Log Number	2006143	Log Number	2006143	Log Number	2006143	Log Number	2006143

All interpretations are opinions based on inferences from electrical or other measurements and we cannot and do not guarantee the accuracy or correctness of any interpretation, and we shall not, except in the case of gross or willful negligence on our part, be liable or responsible for any loss, costs, damages, or expenses incurred or sustained by anyone resulting from any interpretation made by any of our officers, agents or employees. These interpretations are also subject to our general terms and conditions set out in our current Price Schedule.

Comments
 STATIC and DYNAMIC down passes were made at 50 fpm.
 8 station performed.
 Q ~-1000 gpm

