

Company	Diversified Drilling Corp.	Well	NW 22N
Field	Cape Coral	County	Lee
State/Prv	Florida	Location	SW corner of Kismet Pkwy & NE 11th Ave
Rement Datum	G.L.	Other Services	XRAY/CT/DIC/FLUOR/DHIV
Log Measured From	G.L.	Company	Diversified Drilling Corporation
Drilling Measured From	G.L.	Well	NW 22N
Elevation		Field	Cape Coral
K.B.		County	Lee
D.F.		State/Prv	Florida
G.L.		Location	SW corner of Kismet Pkwy & NE 11th Ave
		Company	Cape Coral Water Utilities Department
		Well	MWH

Date	12-JAN-2007
Run Number	THREE
Depth Driller	520'
Depth Logger	524'
Bottom Logged Interval	516'
Top Log Interval	385'
Open Hole Size	11"
Type Fluid	H2O
Density / Viscosity	N/A
Flux / Recirc Temp	N/A
Flux / Recirc Rate	N/A
Time Loggers on Bottom	11:30:11/2/2007
Time Loggers on Trip	13:15:11/2/2007
Time Loggers on Deck	M/GS-4
Equipment Number	FI Meters
Location	S. Miler/C. Miller
Recorded By	G. Young (MMH)
Witnessed By	E. Reitenwald (MMH)
Transit Hill (DDC)	

Run Number	ONE	Bit Size	4 1/2"	From	428'	To	491'
Run Number	TWO	Bit Size	4 1/2"	From	520'	To	520'

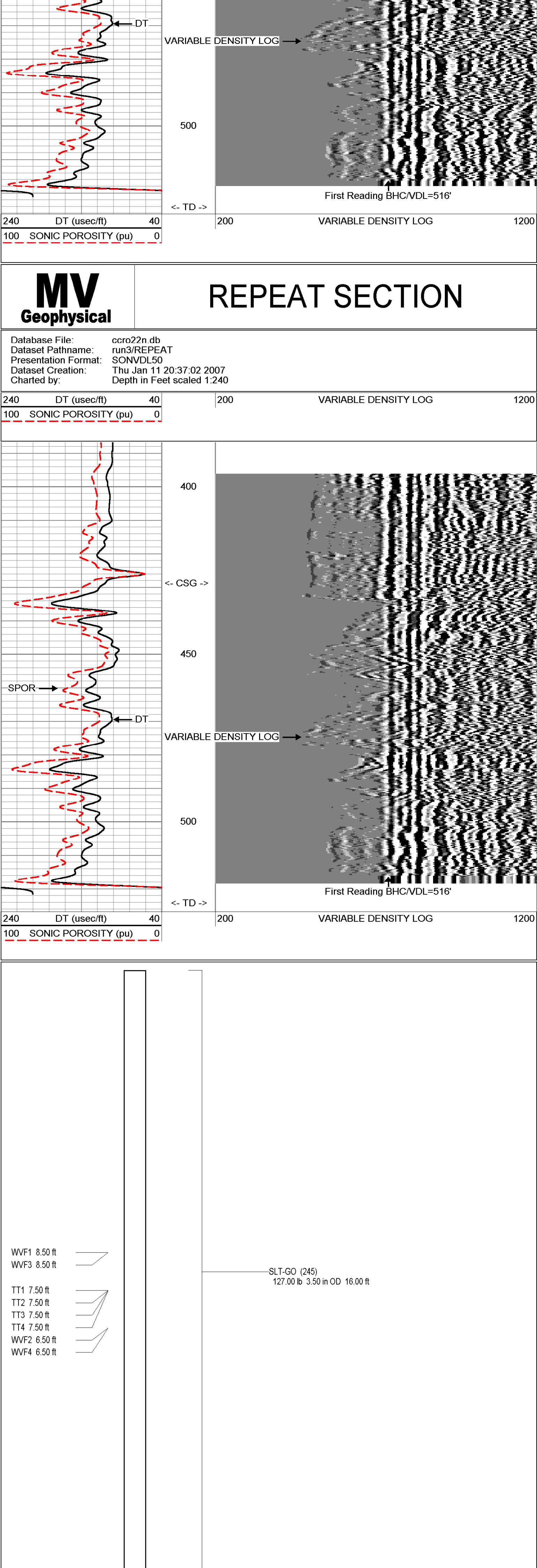
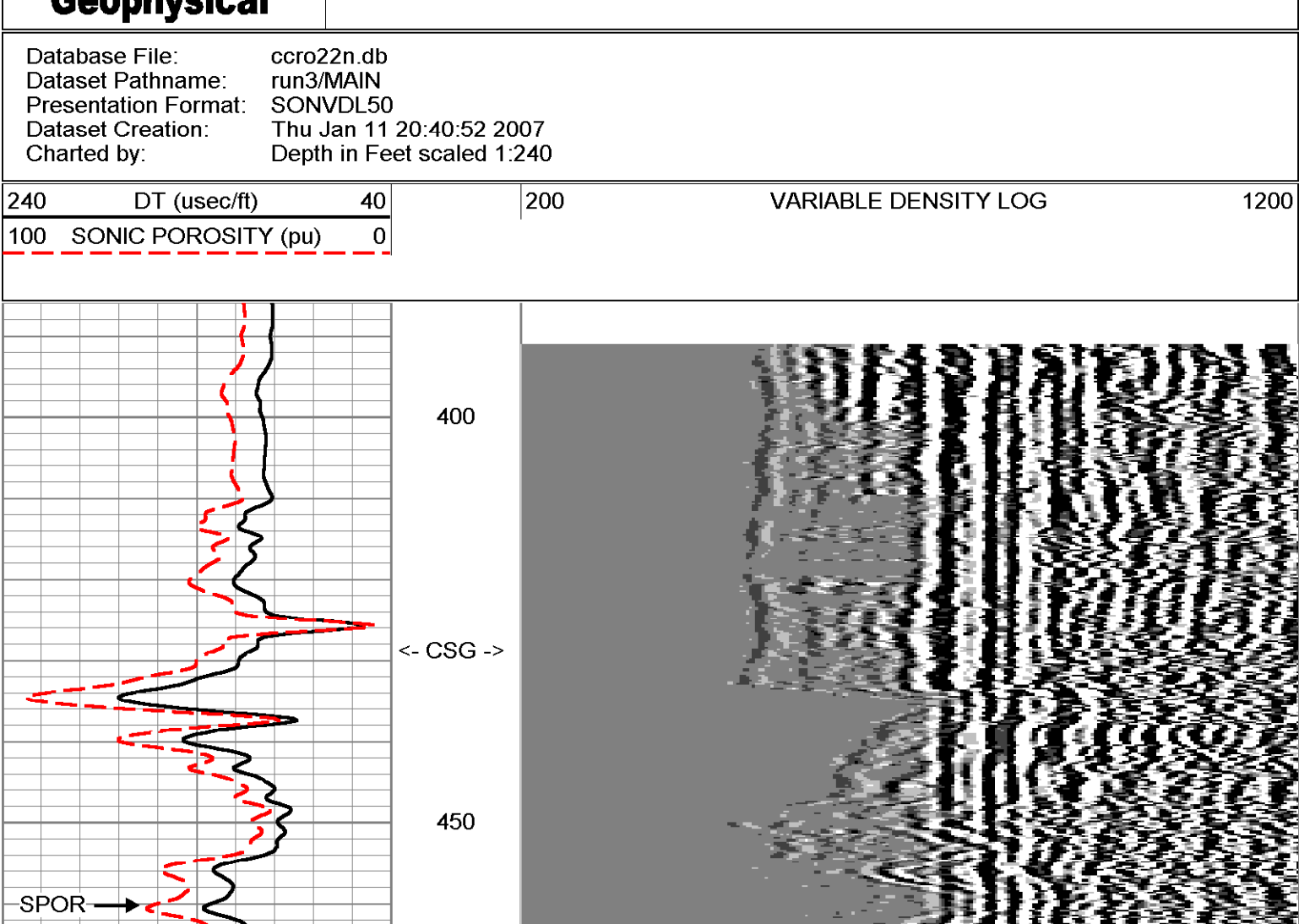
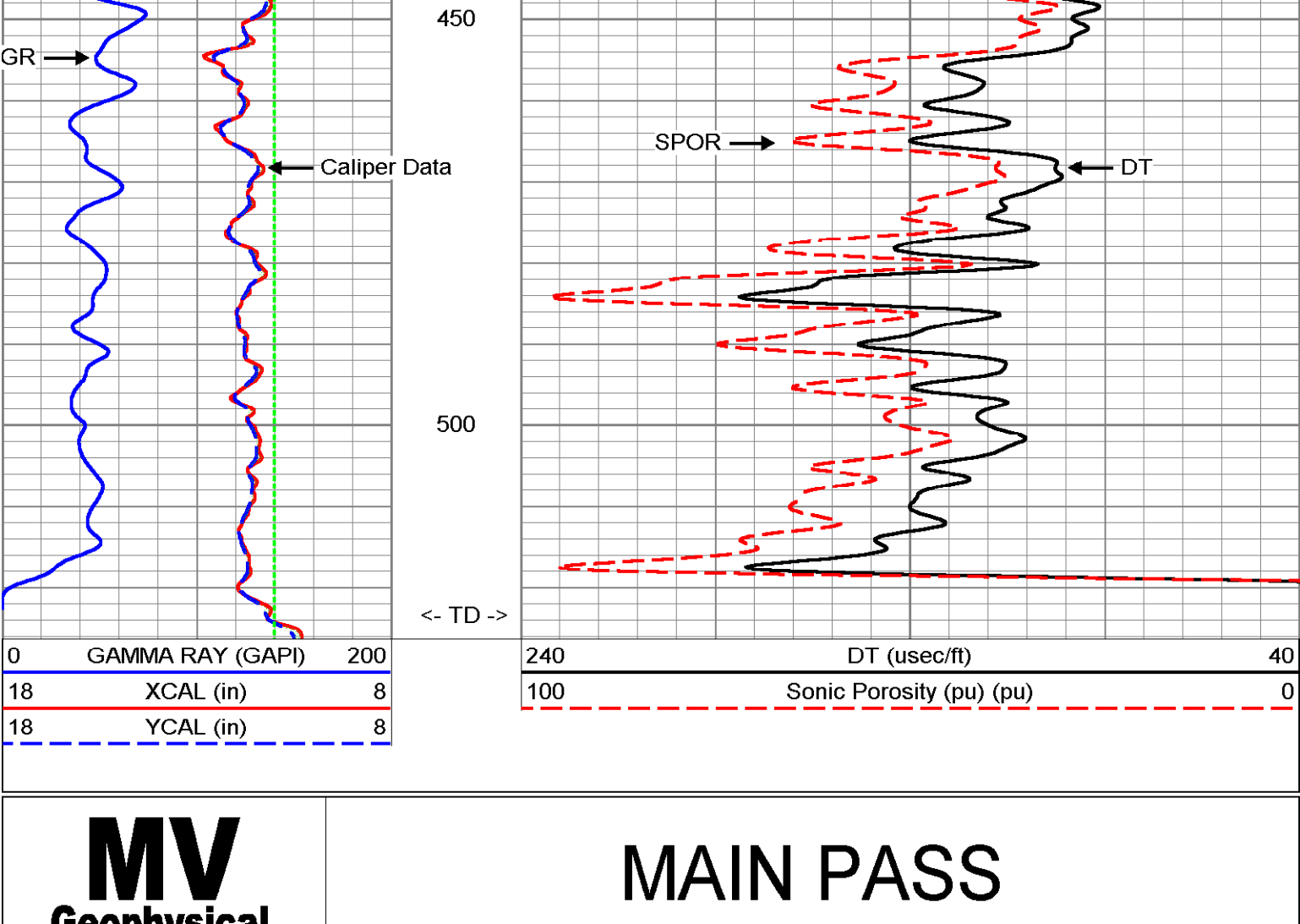
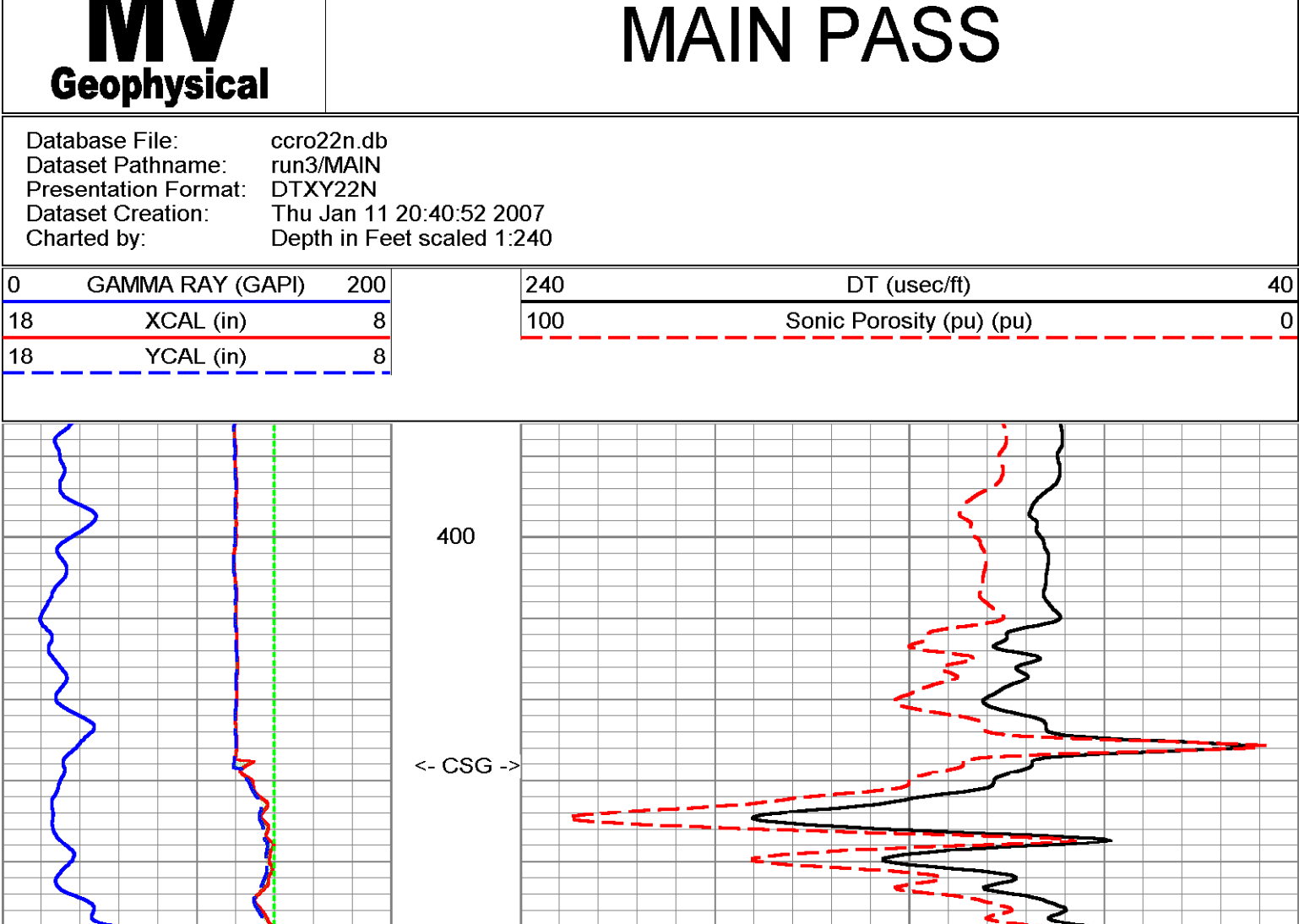
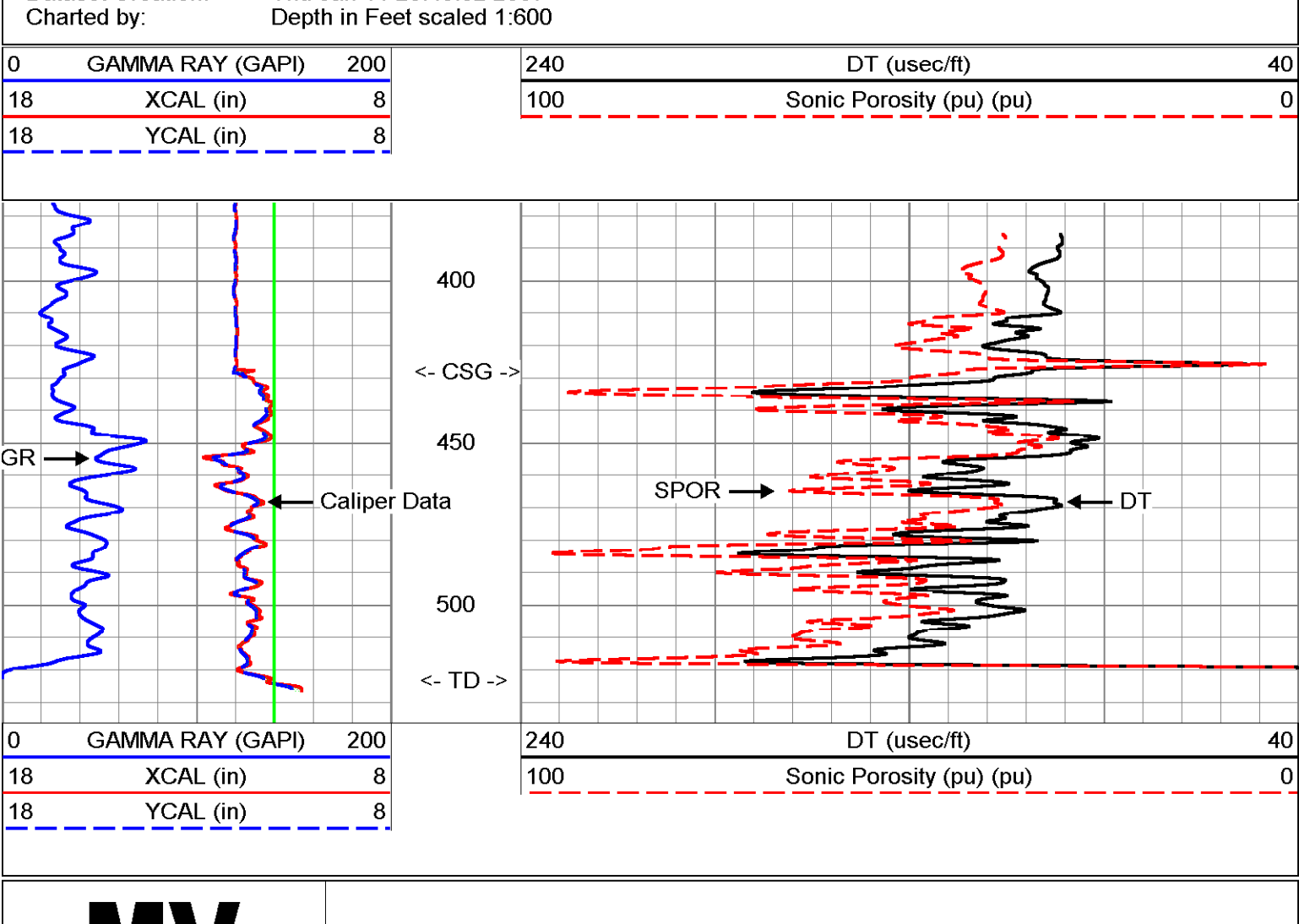
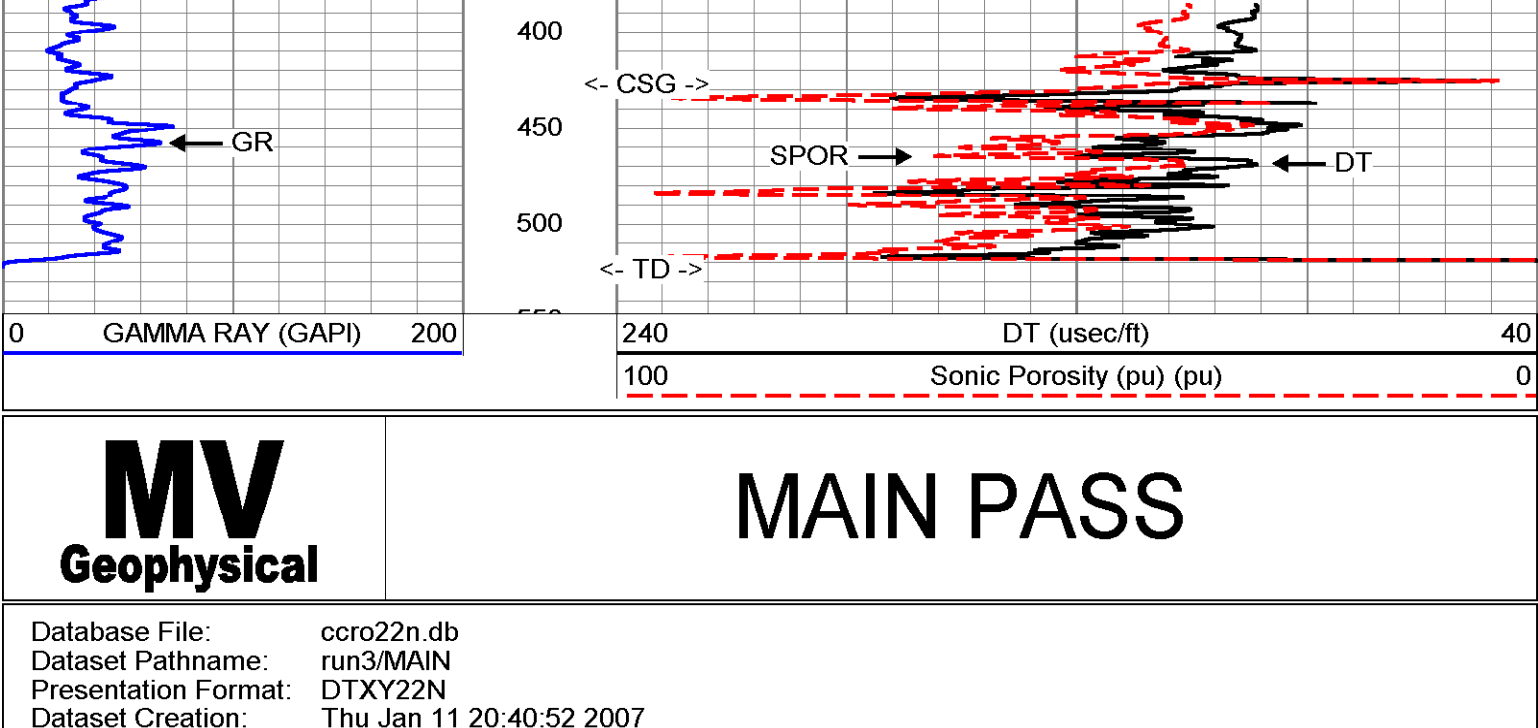
Casing Record	Size	WT	Surf	Bottom
Stringing	12	4.8	SRFACE	428
Production String	12	4.8		
Lineer	2007/015			
Lineer				

<<< Fold Here >>>

All interpretations are opinions based on inferences from electrical or other measurements and we cannot and do not guarantee the accuracy or correctness of any interpretation, and we shall not, except in the case of gross or willful negligence on our part, be liable or responsible for any loss, costs, damages, or expenses incurred or sustained by anyone resulting from any interpretation made by any of our officers, agents or employees. These interpretations are also subject to our general terms and conditions set out in our current Price Schedule.

Comments

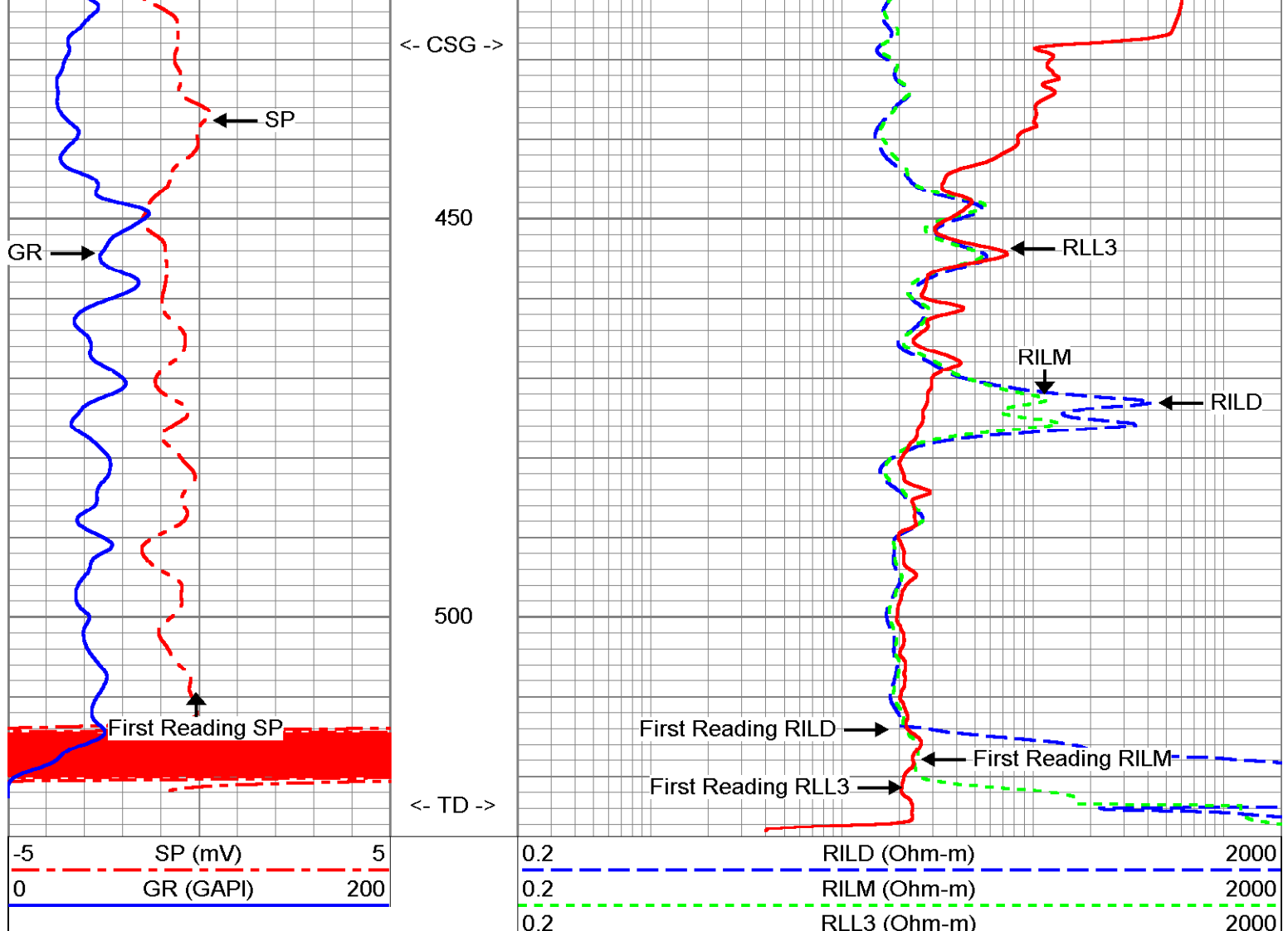
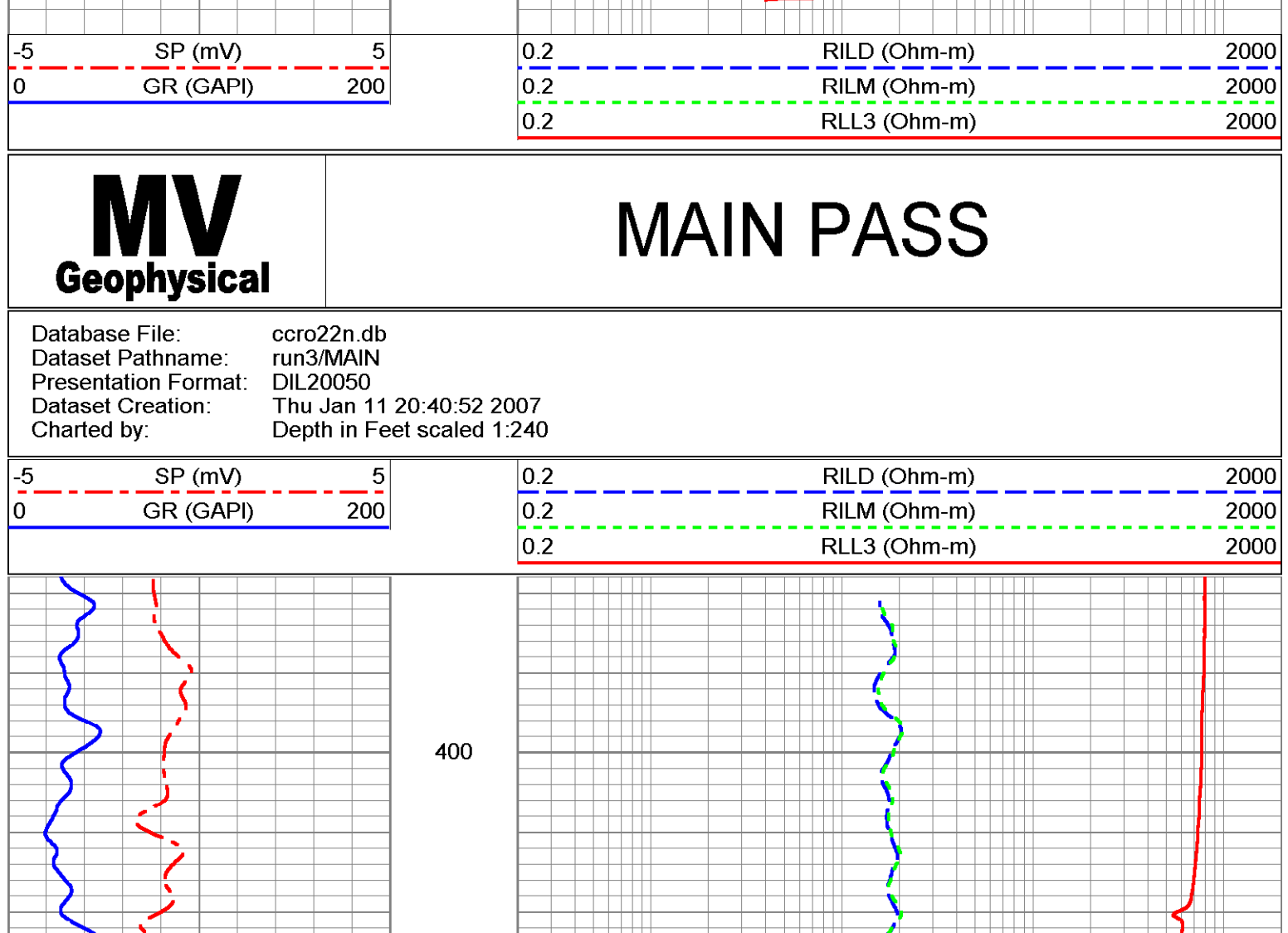
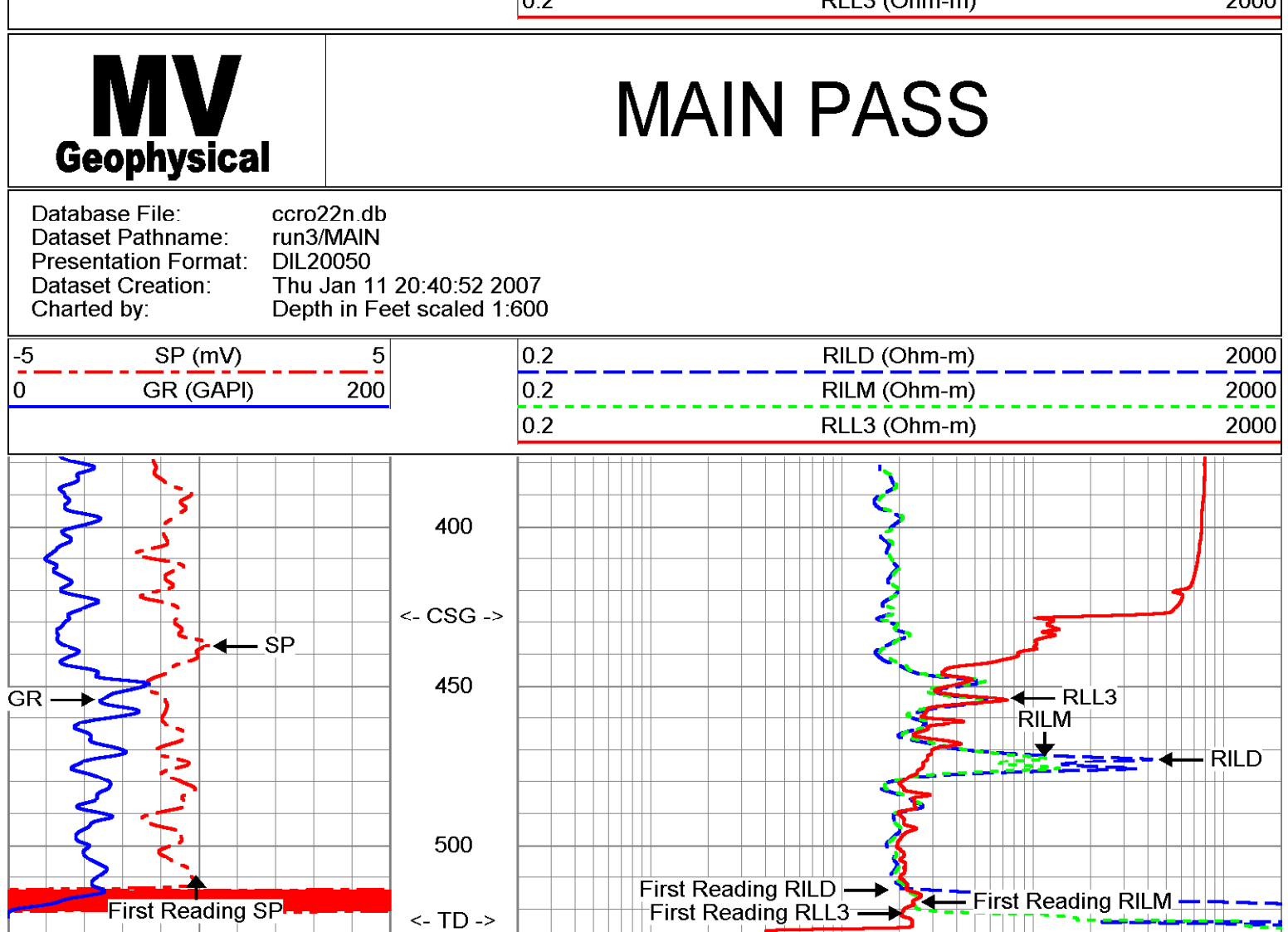
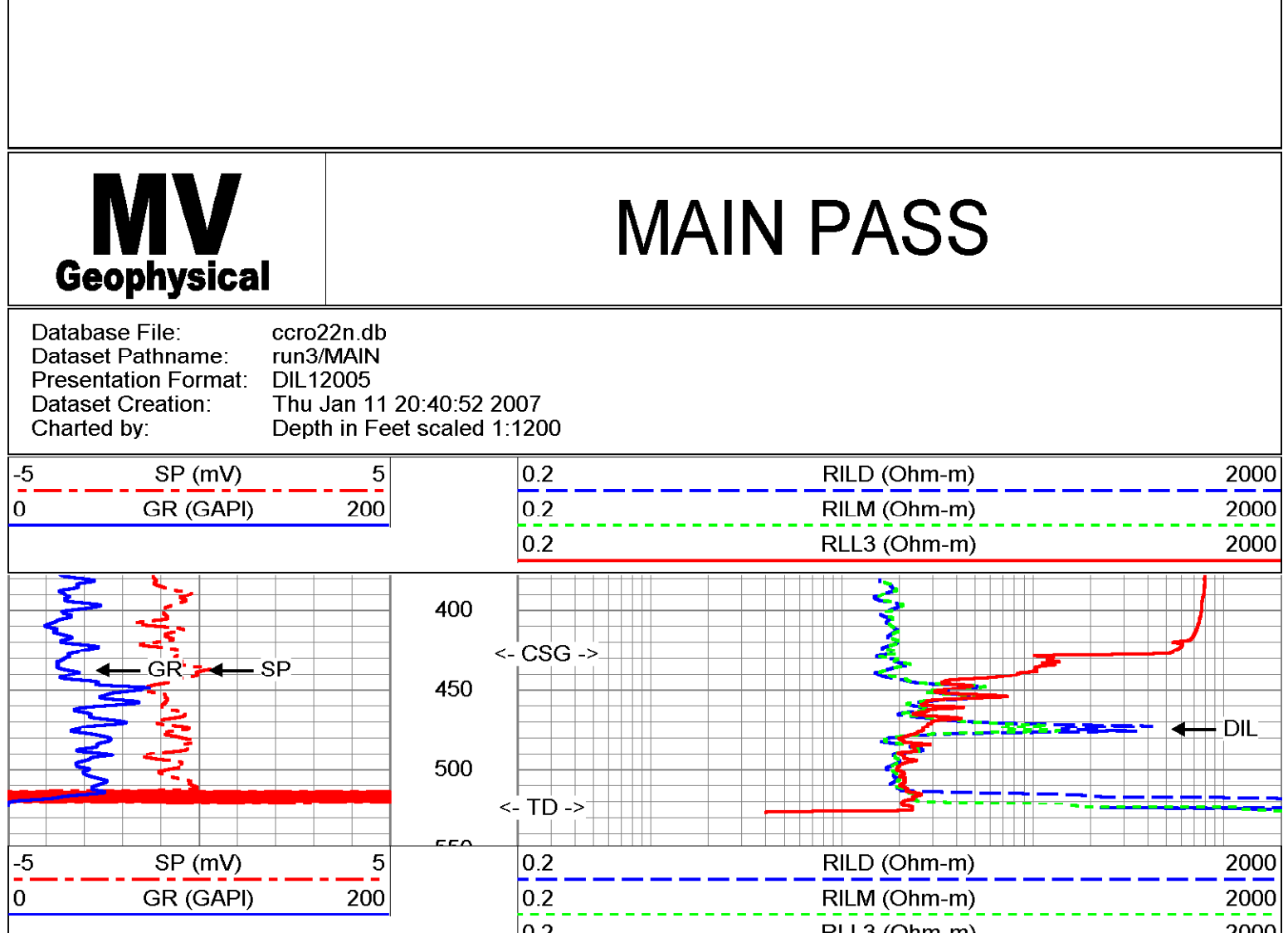
Sonic Porosity was run on a Limestone Matrix (=47.5)



Company Diversified Drilling Corp.		Well NW 22N	Location SW corner of Kismet Pkwy & NE 11th Ave
Field Cape Coral		County Lee	State/Prv Florida
Company	Diversified Drilling Corporation	Well	NW 22N
Field	Cape Coral	County	Lee
Location	Cape Coral Water Utilities Department	Other Services	XYGRDIL FCT BHC FLOW/DHTV
Permanent Datum	G.L.	Elevation	
Log Measured From	G.L.	K/B	
Drilling Measured From	G.L.	D/F	
Date	12-JAN-2007	Run Number	THREE
Depth Driller	520'	Bottom Logger	524'
Bottom Logged Interval	522'	Top Log Interval	428'
Open Hole Size	11"	H2O	NA
Type Fluid	NA	Density / Viscosity	NA
Max. Recorded Temp.	NA	Estimated Cement Top	NA
Time Well Ready	11:30 1/12/2007	Time Well Ready	11:30 1/12/2007
Equipment Number	MMGS-1	Location	FT Myers
Witnessed By	S.Miller/C.Miller	Recorded By	E.Rechenwald (MMWH)
Location	G.Young (MMWH)	Witnessed By	Travis Hill (DDC)
Run Number	ONE	Bit	7 3/8"
ONE	42'	From	481'
TWO	428'	To	520'
Size	20"	Weight	
Surface	375' WT	Top	SURFACE
Production String	12" FRP	Bottom	428'
Lineer	20070715	P.O.#	
Job No.		* FINAL PRINT *	

All interpretations are opinions based on inferences from electrical or other measurements and we cannot and do not guarantee the accuracy or correctness of any interpretation, and we shall not, except in the case of gross or willful negligence on our part, be liable or responsible for any loss, costs, damages, or expenses incurred or sustained by anyone resulting from any interpretation made by any of our officers, agents or employees. These interpretations are also subject to our general terms and conditions set out in our current Price Schedule.

Comments  
Rw=3.478 ohm-m @ 81.3 degF



Dual Induction Calibration Report

Serial-Model: 5390-R  
 Surface Cal Performed: Sun Jan 16 21:49:43 2005  
 Downhole Cal Performed: Wed Oct 19 12:32:57 2005  
 After Survey Verification Performed: Wed Oct 19 12:58:55 2005

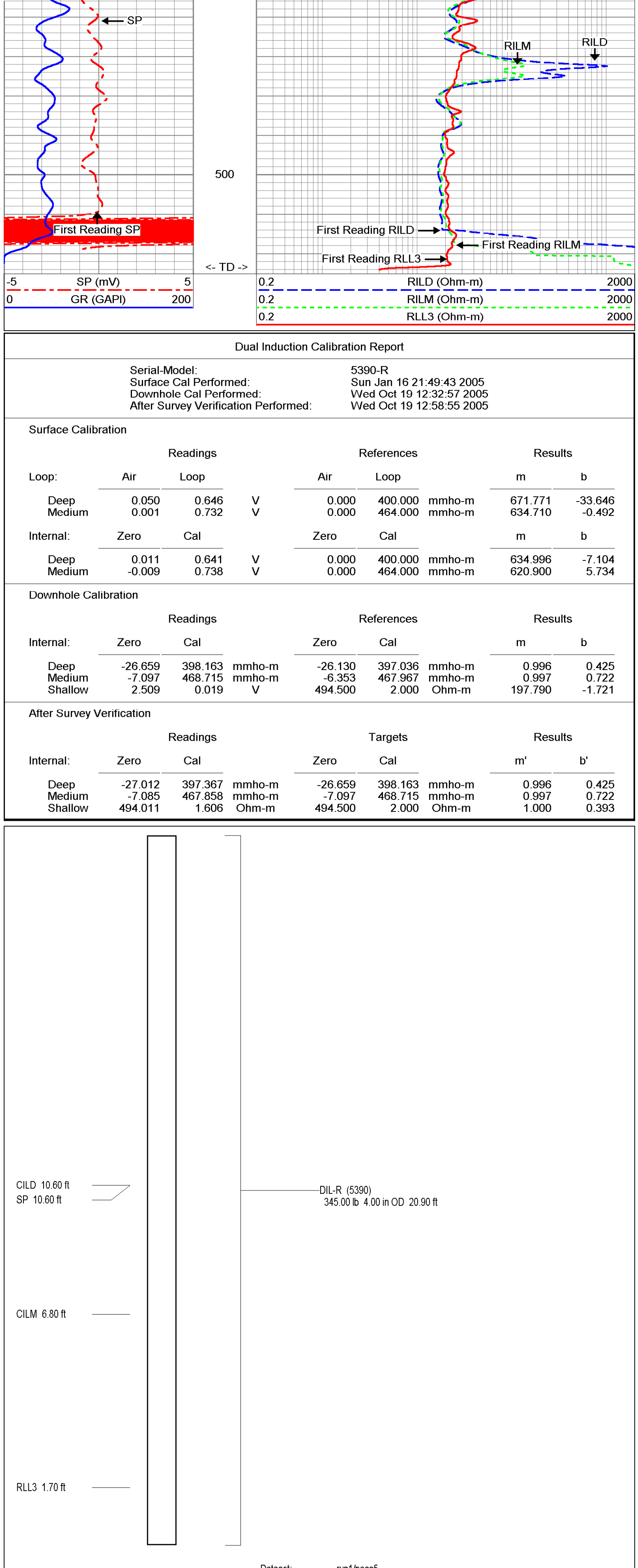
Surface Calibration				References				Results	
Loop:	Air	Loop		Air	Loop		m	b	
Deep	0.050	0.646	V	0.000	400.000	mmho-m	671.771	-33.646	
Medium	0.001	0.732	V	0.000	464.000	mmho-m	634.710	-0.492	
Internal:	Zero	Cal		Zero	Cal		m	b	
Deep	0.011	0.641	V	0.000	400.000	mmho-m	634.996	-7.104	
Medium	-0.009	0.738	V	0.000	464.000	mmho-m	620.900	5.734	

Downhole Calibration				References				Results	
Internal:	Zero	Cal		Zero	Cal		m	b	
Deep	-26.659	398.163	mmho-m	-26.130	397.036	mmho-m	0.996	0.425	
Medium	-7.097	467.858	mmho-m	-6.353	467.967	mmho-m	0.997	0.722	
Shallow	2.509	0.019	V	494.500	2.000	Ohm-m	197.790	-1.721	

After Survey Verification				Targets				Results	
Internal:	Zero	Cal		Zero	Cal		m'	b'	
Deep	-27.012	397.367	mmho-m	-26.659	398.163	mmho-m	0.996	0.425	
Medium	-7.085	467.858	mmho-m	-7.097	468.715	mmho-m	0.997	0.722	
Shallow	494.011	1.606	Ohm-m	494.500	2.000	Ohm-m	1.000	0.393	



Dataset: run1/pass5  
 Total Length: 20.90 ft  
 Total Weight: 345.00 lb  
 O.D.: 4.00 in





# FLUID CONDUCTIVITY TEMPERATURE LOG

Company Diversified Drilling Corp.		Company Diversified Drilling Corporation	
Well	NW 22N	Well	NW 22N
Field	Cape Coral	Field	Cape Coral
County	Lee	County	Lee
State/Prv	Florida	State/Prv	Florida
Location SW corner of Kismet Pkwy & NE 11th Ave Cape Coral Water Utilities Department MWH		Other Services XYGR/DIL FCT/BHC FLOW/DHTV	
Permanent Datum	G.L.	Elevation	
Log Measured From	G.L.	K.B.	
Drilling Measured From	G.L.	D.F.	
		G.L.	
Date	12-JAN-2007		
Run Number	THREE		
Depth Driller	520'		
Depth Logger	524'		
Bottom Logged Interval	516'		
Top Log Interval	386'		
Open Hole Size	11"		
Type Fluid	H2O		
Density / Viscosity	NA/NA		
Max. Recorded Temp.	na		
Estimated Cement Top	NA		
Time Well Ready	11:30 1/12/2007		
Time Logger on Bottom	14:15 1/12/2007		
Equipment Number	MMGS-1		
Location	Fl. Myers		
Recorded By	S. Miller/C. Miller		
Witnessed By	G. Young (MWH)		
Run Number	Borehole Record	Tubing Record	Travis Hill (DDC)
ONE	Bit	From	To
TWO	7.875"	42"	49'1"
	11"	428"	520"
Casing Record	Size	Wgt/Ft	Top
Surface String	20"	.375" WT	SURFACE
Prof. String	12" FRP	12" ID	
Production String			
Liner			
Invoice No.	2007015	P.O. #.	Job No.:
* FINAL PRINT *			

<<< Fold Here >>>

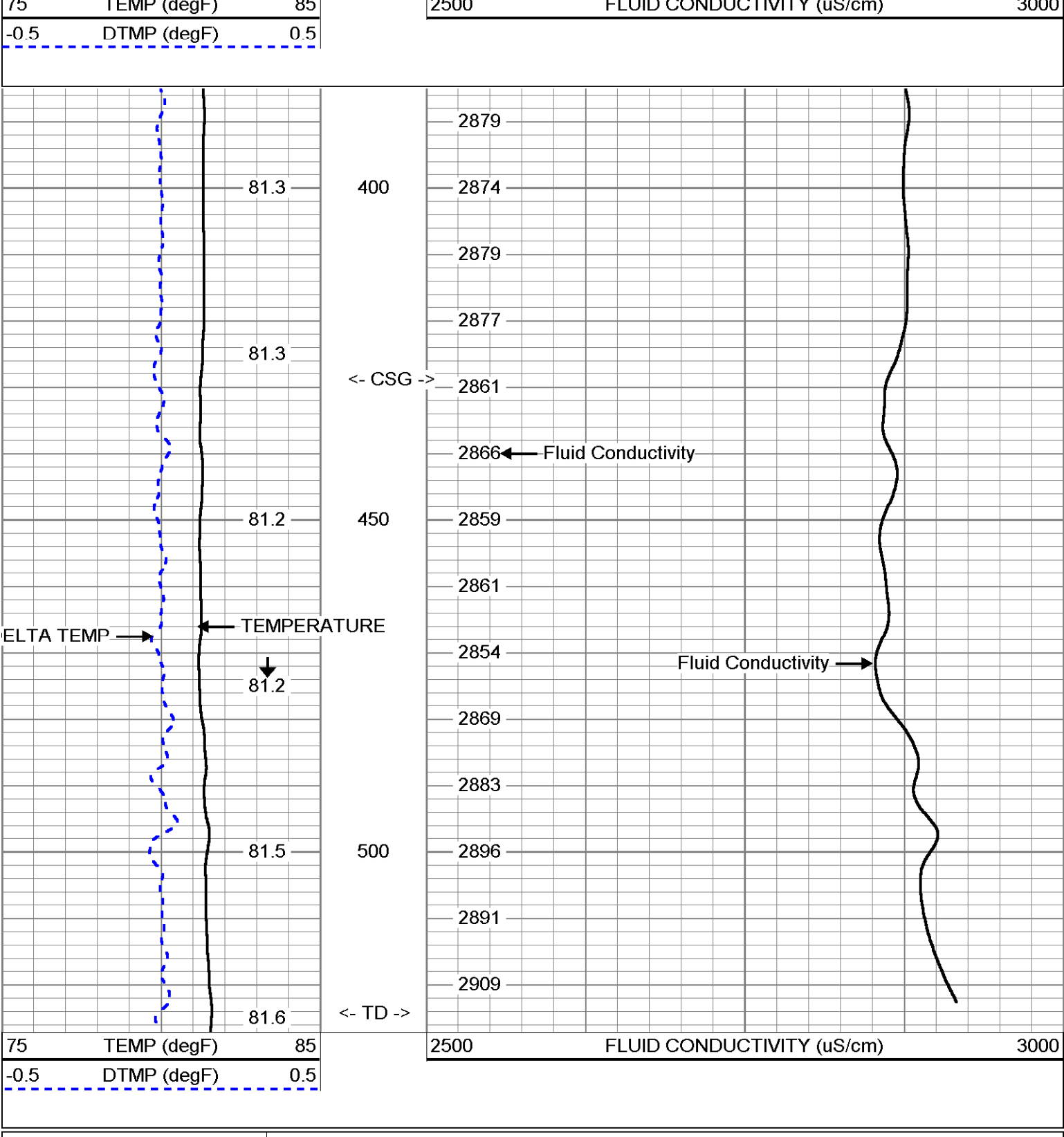
All interpretations are opinions based on inferences from electrical or other measurements and we cannot and do not guarantee the accuracy or correctness of any interpretation, and we shall not, except in the case of gross or willful negligence on our part, be liable or responsible for any loss, costs, damages, or expenses incurred or sustained by anyone resulting from any interpretation made by any of our officers, agents or employees. These interpretations are also subject to our general terms and conditions set out in our current Price Schedule.

Comments

STATIC and DYNAMIC DOWN passes were performed.  
 Cw=2875 uS/cm @ 81.3 degF (Dynamic Sample). Q ~750 gpm.  
 FLUID RESISTIVITY CALIBRATION REPORT (Performed: 11-JAN-07 10:45)  
 uS/cm CPS  
 4018.4 2824.25  
 8828.5 2660.58  
 14891.2 2234.36  
 TEMPERATURE CALIBRATION REPORT (Performed: 11-JAN-07 10:15)  
 DEG-F CPS  
 34.81 2349.61  
 142.22 6966.29

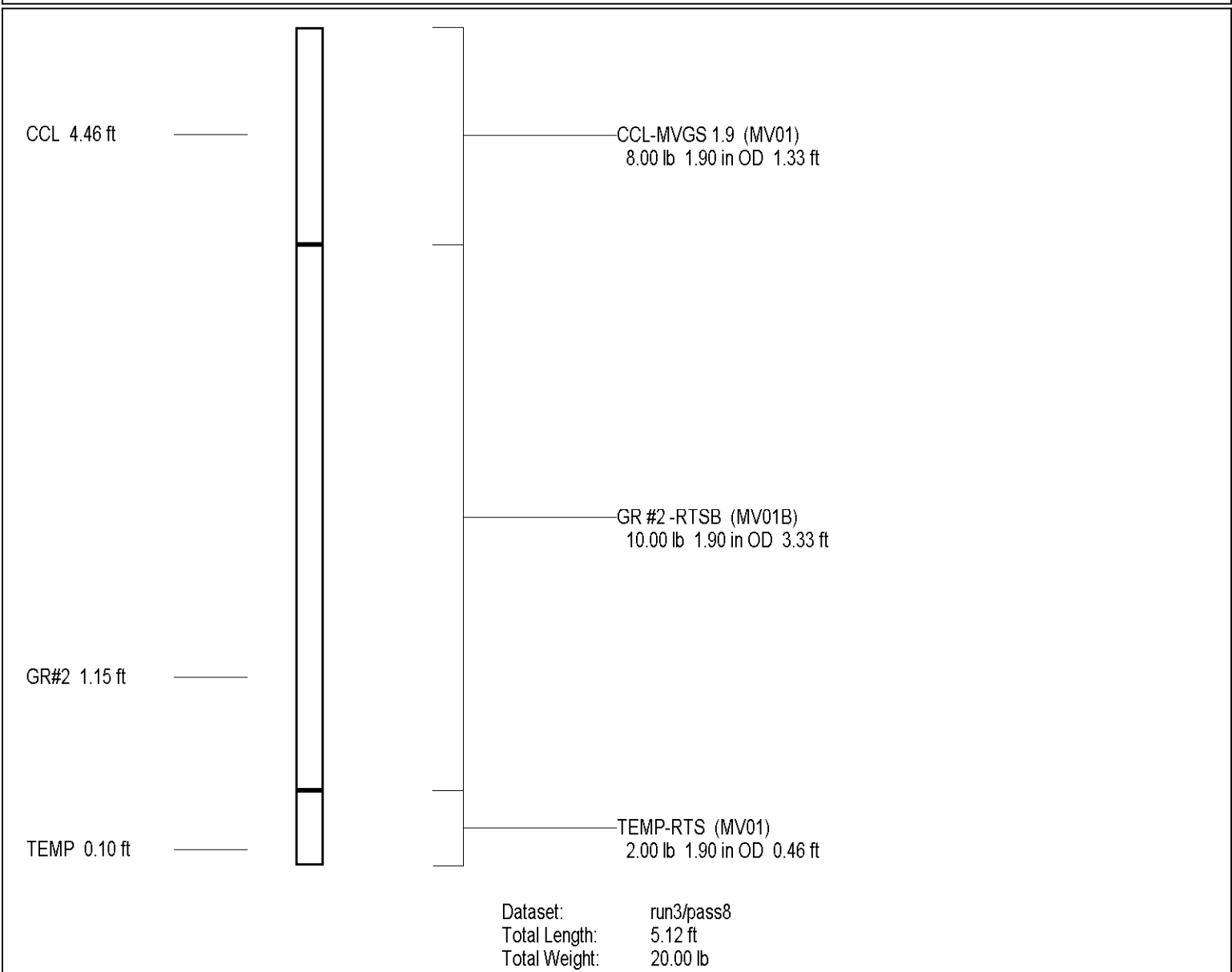
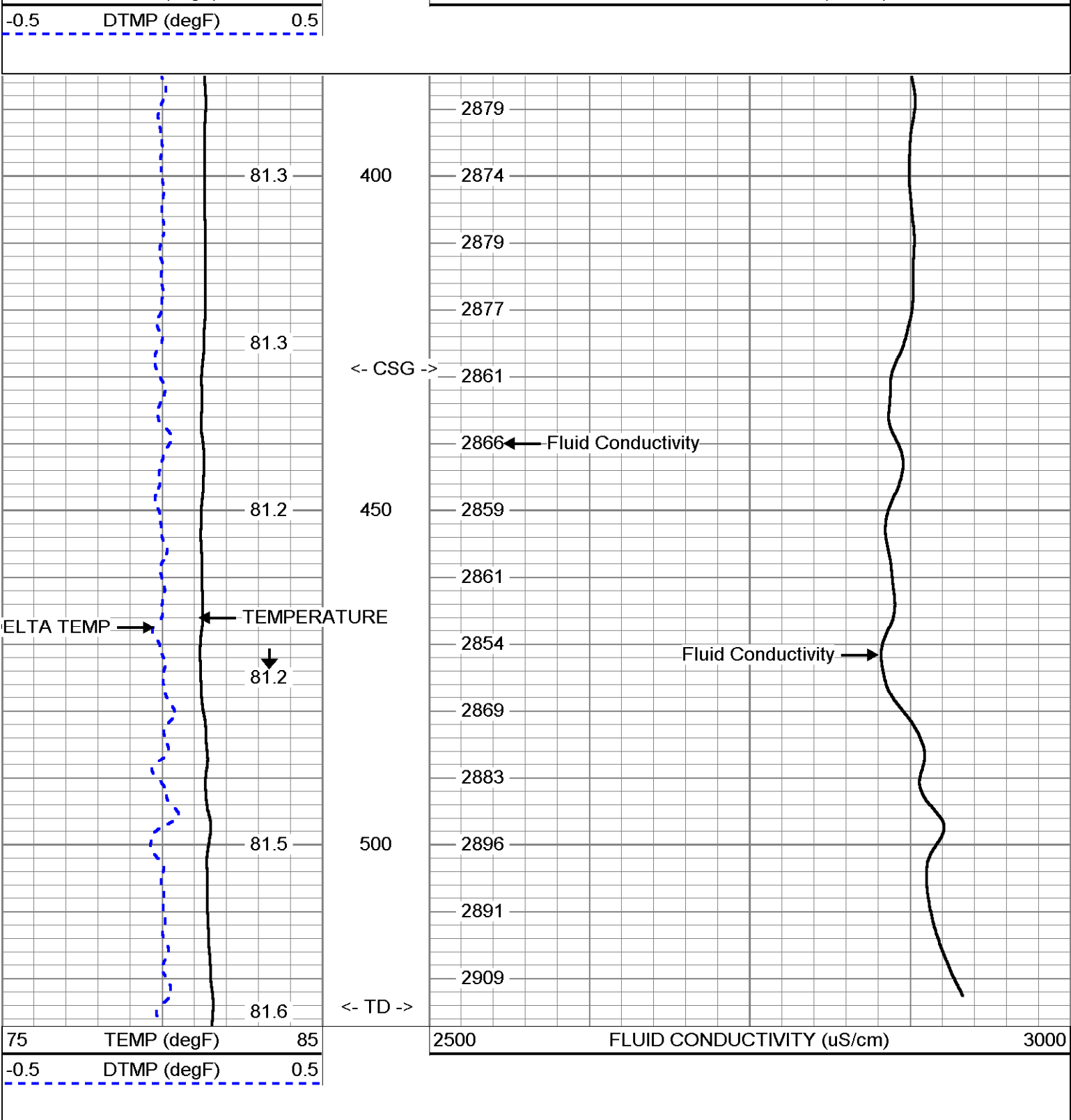
## MV Geophysical Dynamic FCT Down

Database File: ccro22n.db  
 Dataset Pathname: run3/DFCT  
 Presentation Format: FCT22N  
 Dataset Creation: Fri Jan 12 16:38:19 2007  
 Charted by: Depth in Feet scaled 1:240



## MV Geophysical Dynamic FCT Down

Database File: ccro22n.db  
 Dataset Pathname: run3/DFCT  
 Presentation Format: FCT22N  
 Dataset Creation: Fri Jan 12 16:38:19 2007  
 Charted by: Depth in Feet scaled 1:240



# Geophysical

## FLOWMETER LOG

Company Diversified Drilling Corp.		Company Diversified Drilling Corporation	
Well NW 22N	Field Cape Coral	Well NW 22N	Field Cape Coral
County Lee	State/Pv Florida	County Lee	State/Pv Florida
Location SW corner of Kismet Pkwy & NE 11th Ave Cape Coral Water Utilities Department		Other Services XYGRDIL FCT,BHC FLOW,DHTV	
Date 12-JAN-2007	Permanent Datum G.L.	Elevation	K.B. D.F. G.L.
Run Number THREEE	Log Measured From G.L.		
Depth Driller 520'			
Depth Logger 524'			
Bottom Logged Interval 380'			
Top Log Interval 11"			
Open Hole Size 11"			
Type Fluid H2O			
Density / Viscosity N/A			
Max. Recorded Temp. na			
Estimated Cement Top NA			
Time Well Ready 11:30 1/12/2007			
Time Logger on Bottom 14:00 1/12/2007			
Equipment Number M/G/S-1			
Location Ft. Meyers			
Recorded By S. Miller/C. Miller			
Witnessed By G. Young (MMH)			
Brookline Record	E-Reddenwald (MMH)	Travis Hill (DDC)	
Run Number 7	Bit From 491'	Size 42"	Weight 520'
ON 7.575"	TVI 11"	428'	520'
CSinga Record	Size 20"	Weight 42"	Bottom 428'
Surface Sing 12" FRP	Weight 3.75 Wt	12" ID	
Production Sing			
Line 20070115	P. O. #.	Job No.:	* FINAL PRINT *

All interpretations are opinions based on inferences from electrical or other measurements and we cannot and do not guarantee the accuracy or correctness of any interpretation, and we shall not, except in the case of gross or willful negligence on our part, be liable or responsible for any loss, costs, damages, or expenses incurred or sustained by anyone resulting from any interpretation made by any of our officers, agents or employees. These interpretations are also subject to our general terms and conditions set out in our current Price Schedule.

Comments

STATIC and DYNAMIC down passes were made at 50 fpm.

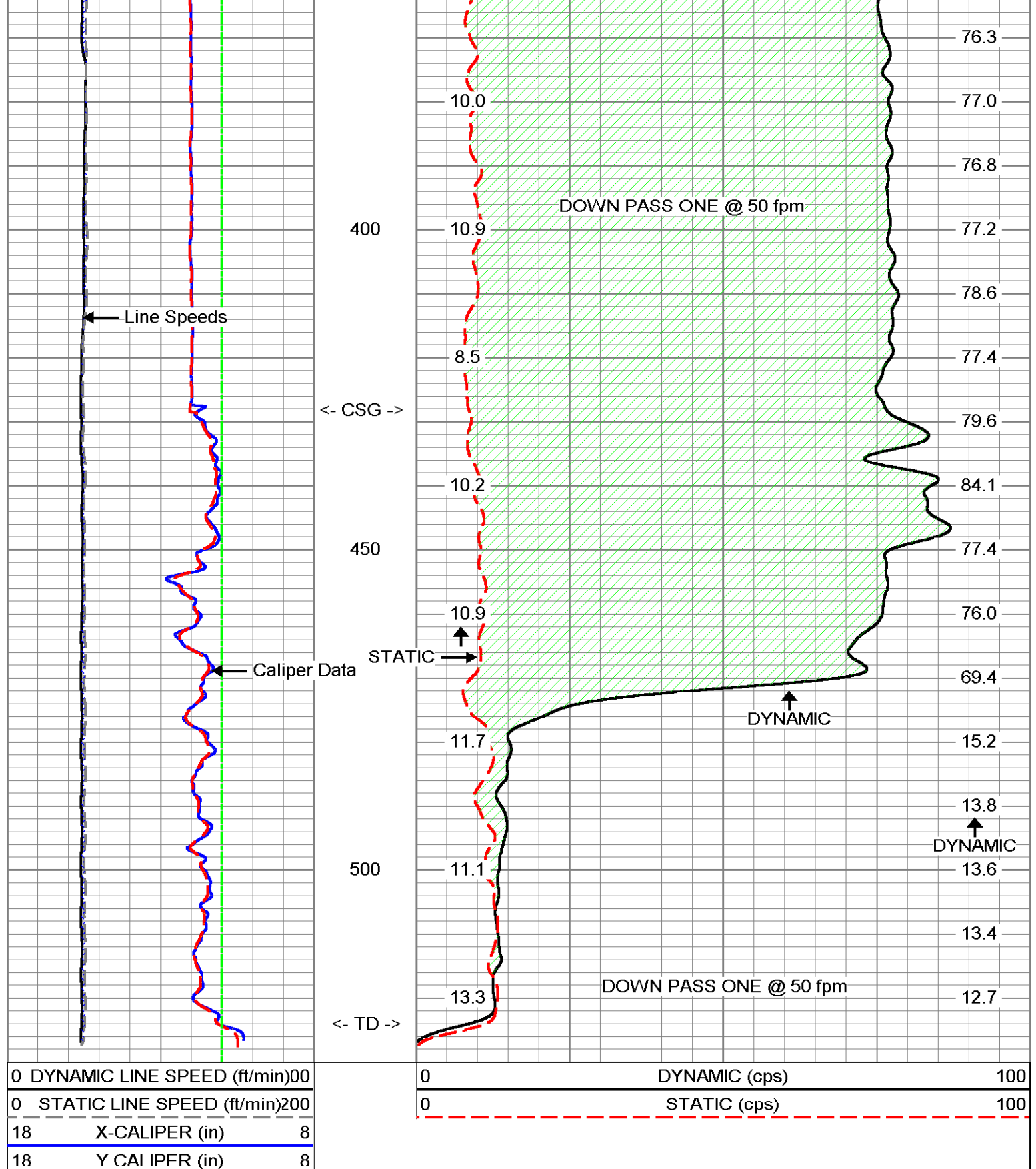
3 station performed).

Q ~750 gpm

## S/D DOWN @ 50 fpm

Database File: ccro22n.db  
 Dataset Pathname: run3/sd50  
 Presentation Format: QCC22N  
 Dataset Creation: Fri Jan 12 14:44:53 2007  
 Charted by: Depth in Feet scaled 1:240

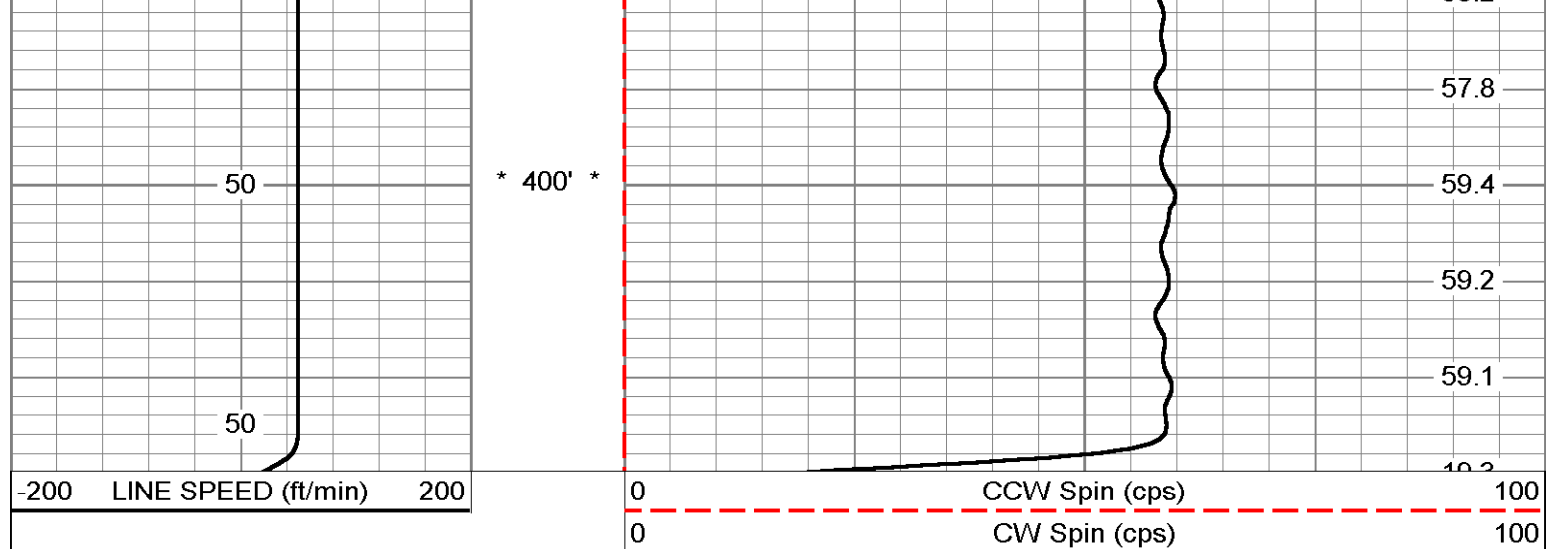
0 DYNAMIC LINE SPEED (ft/min)00	0 DYNAMIC (cps) 100
0 STATIC LINE SPEED (ft/min)200	0 STATIC (cps) 100
18 X-CALIPER (in) 8	
18 Y CALIPER (in) 8	
18 BIT SIZE (in) 8	



0 DYNAMIC LINE SPEED (ft/min)00	0 DYNAMIC (cps) 100
0 STATIC LINE SPEED (ft/min)200	0 STATIC (cps) 100
18 X-CALIPER (in) 8	
18 Y CALIPER (in) 8	
18 BIT SIZE (in) 8	

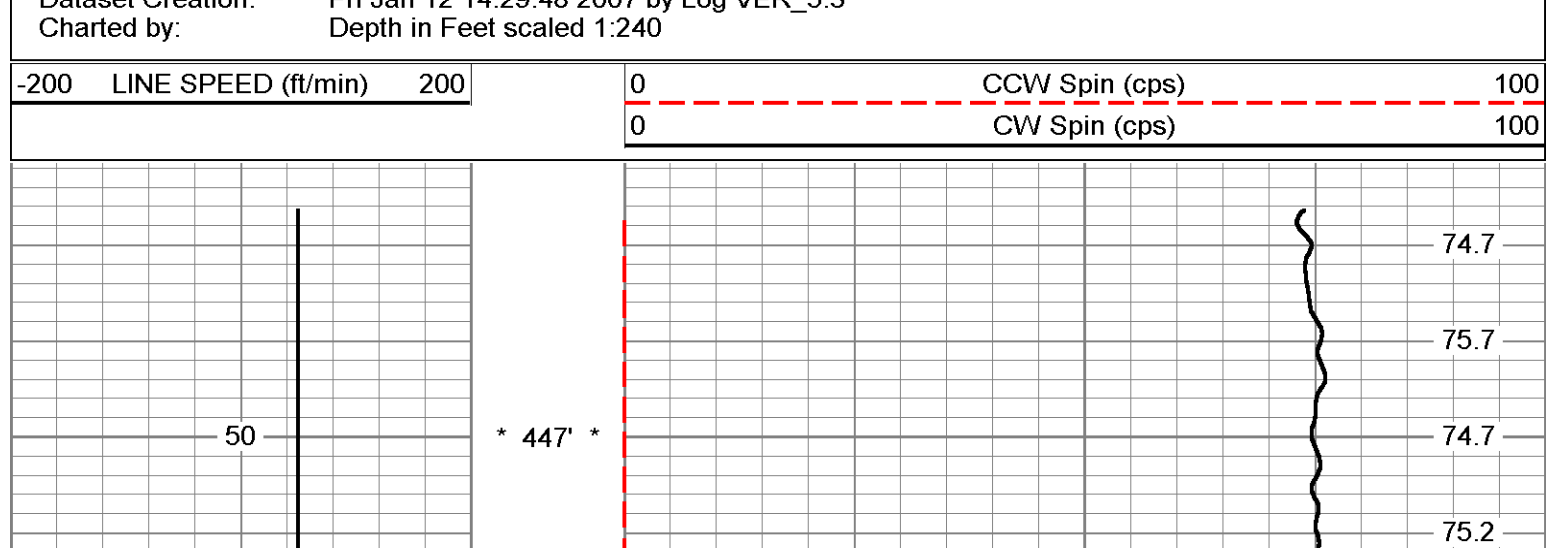
## Station #3: 400'

Database File: ccro22n.db  
 Dataset Pathname: run3/pass13  
 Presentation Format: FLOW  
 Dataset Creation: Fri Jan 12 14:31:57 2007 by Log VER\_5.3  
 Charted by: Depth in Feet scaled 1:240



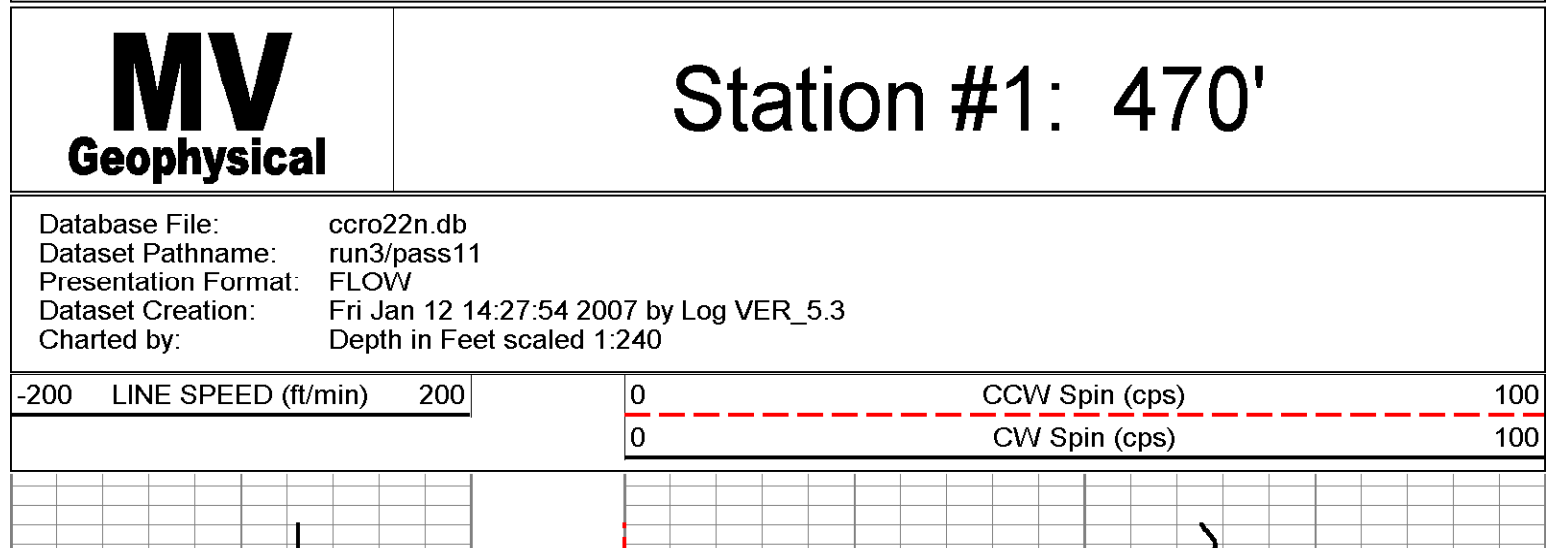
## Station #2: 447'

Database File: ccro22n.db  
 Dataset Pathname: run3/pass12  
 Presentation Format: FLOW  
 Dataset Creation: Fri Jan 12 14:29:48 2007 by Log VER\_5.3  
 Charted by: Depth in Feet scaled 1:240



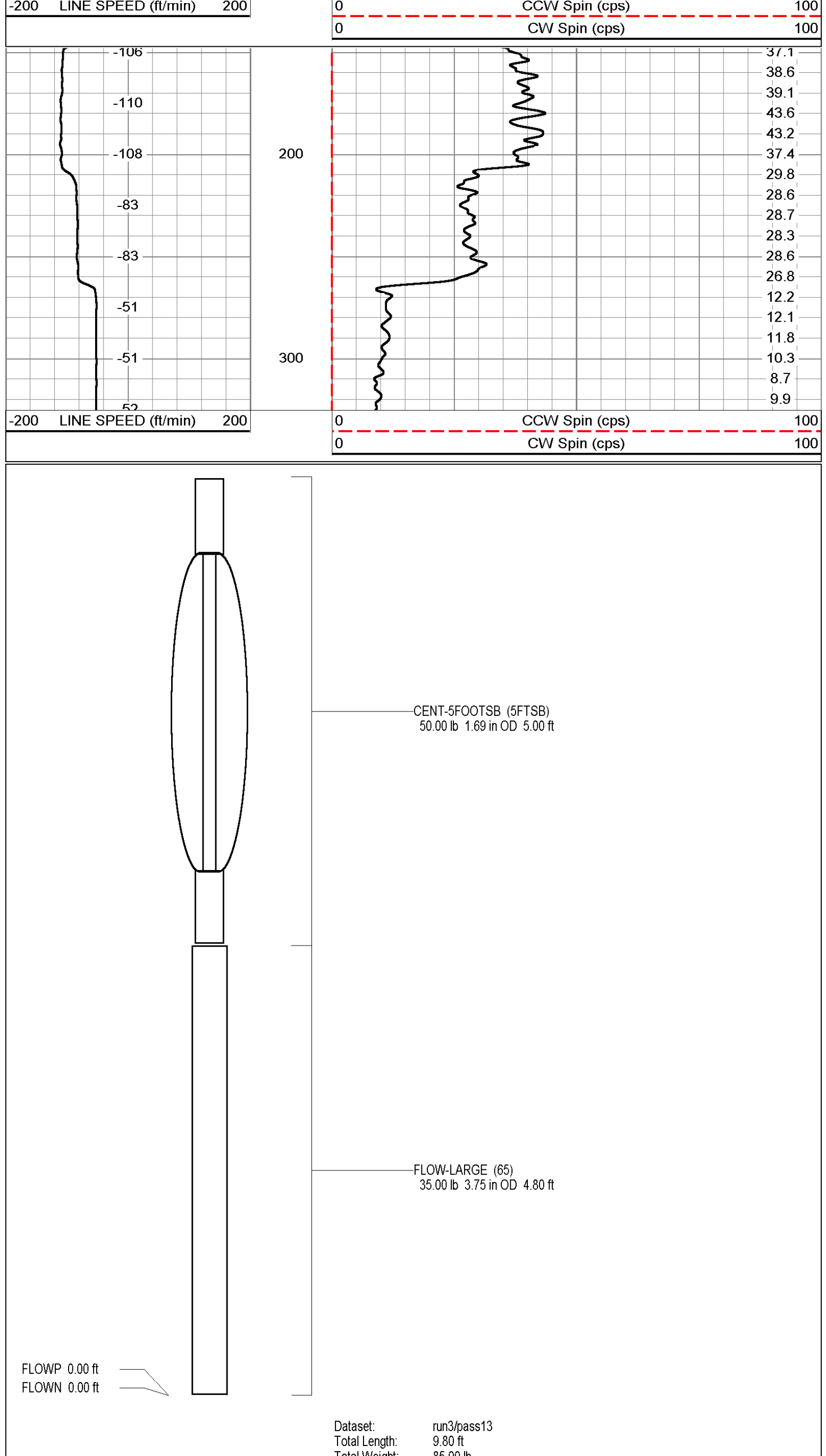
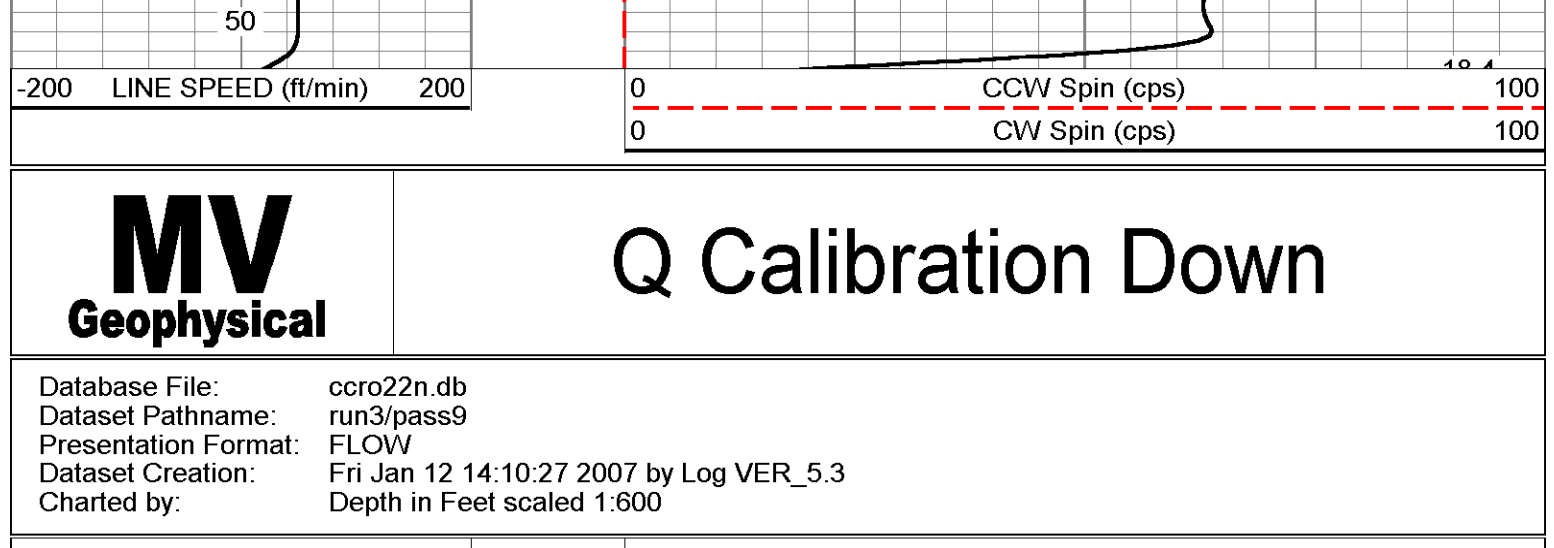
## Station #1: 470'

Database File: ccro22n.db  
 Dataset Pathname: run3/pass11  
 Presentation Format: FLOW  
 Dataset Creation: Fri Jan 12 14:27:54 2007 by Log VER\_5.3  
 Charted by: Depth in Feet scaled 1:240



## Q Calibration Down

Database File: ccro22n.db  
 Dataset Pathname: run3/pass9  
 Presentation Format: FLOW  
 Dataset Creation: Fri Jan 12 14:10:27 2007 by Log VER\_5.3  
 Charted by: Depth in Feet scaled 1:600



Dataset: run3/pass13  
 Total Length: 9.80 ft  
 Total Weight: 85.00 lb  
 O.D.: 3.75 in



