

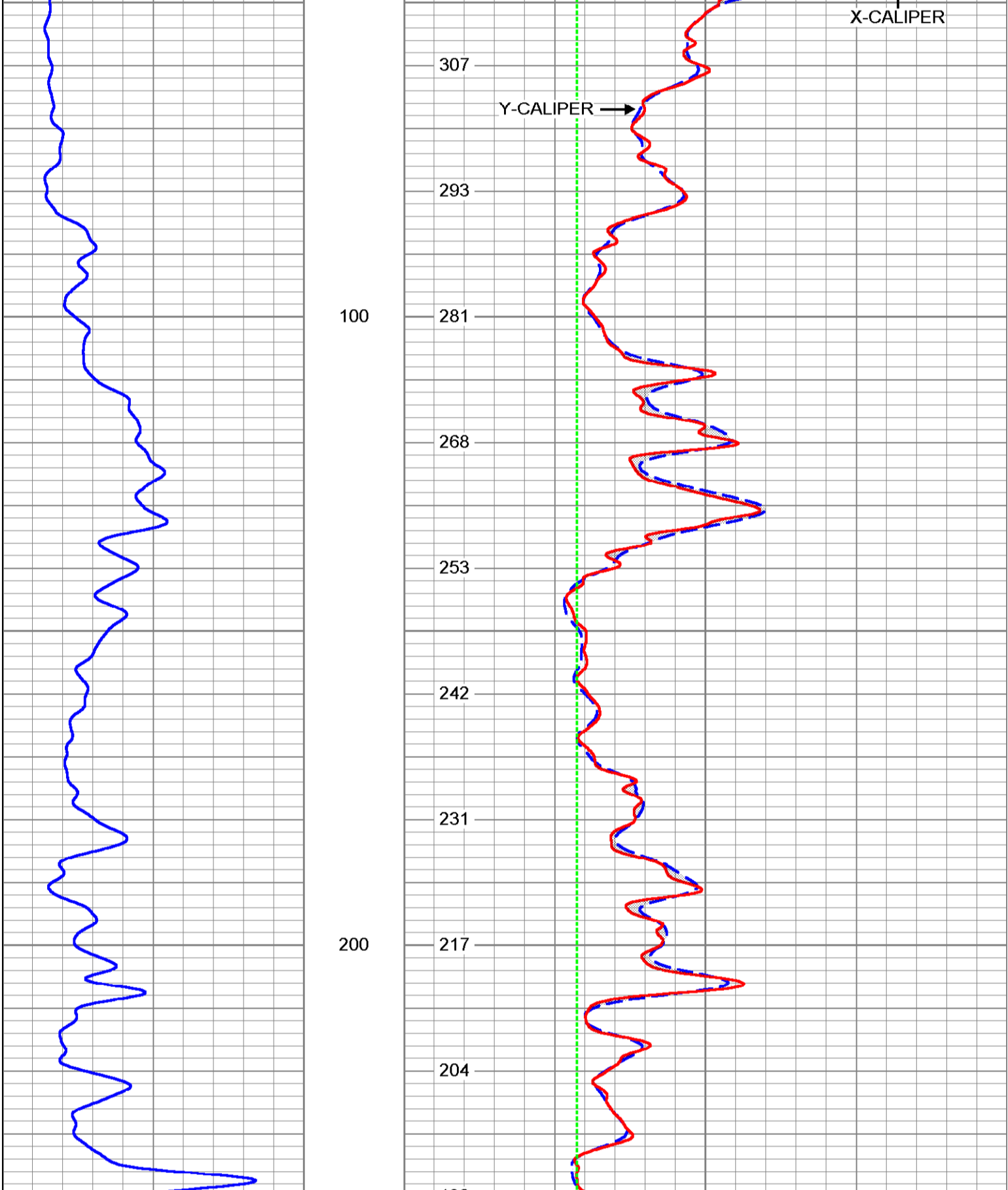
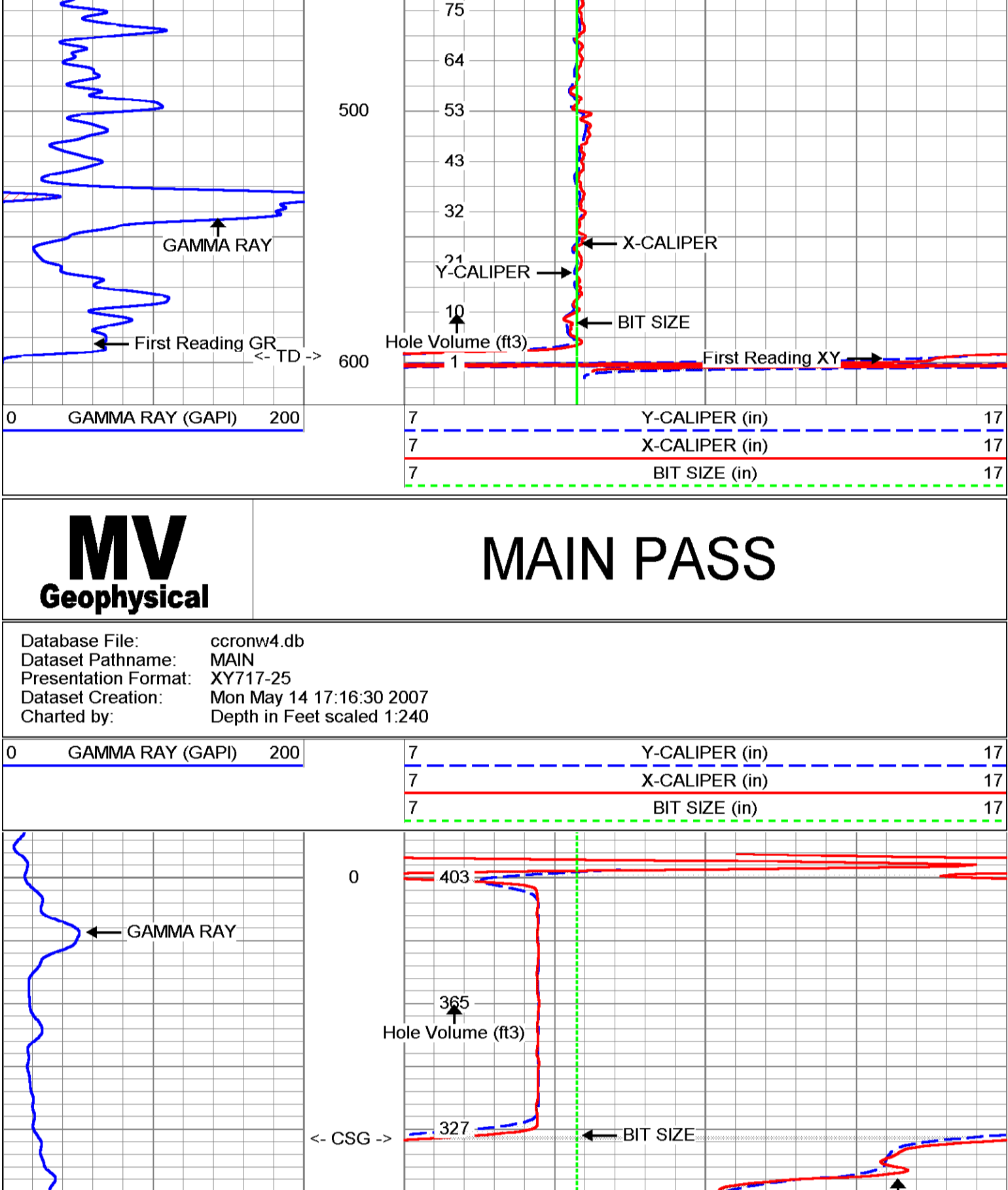
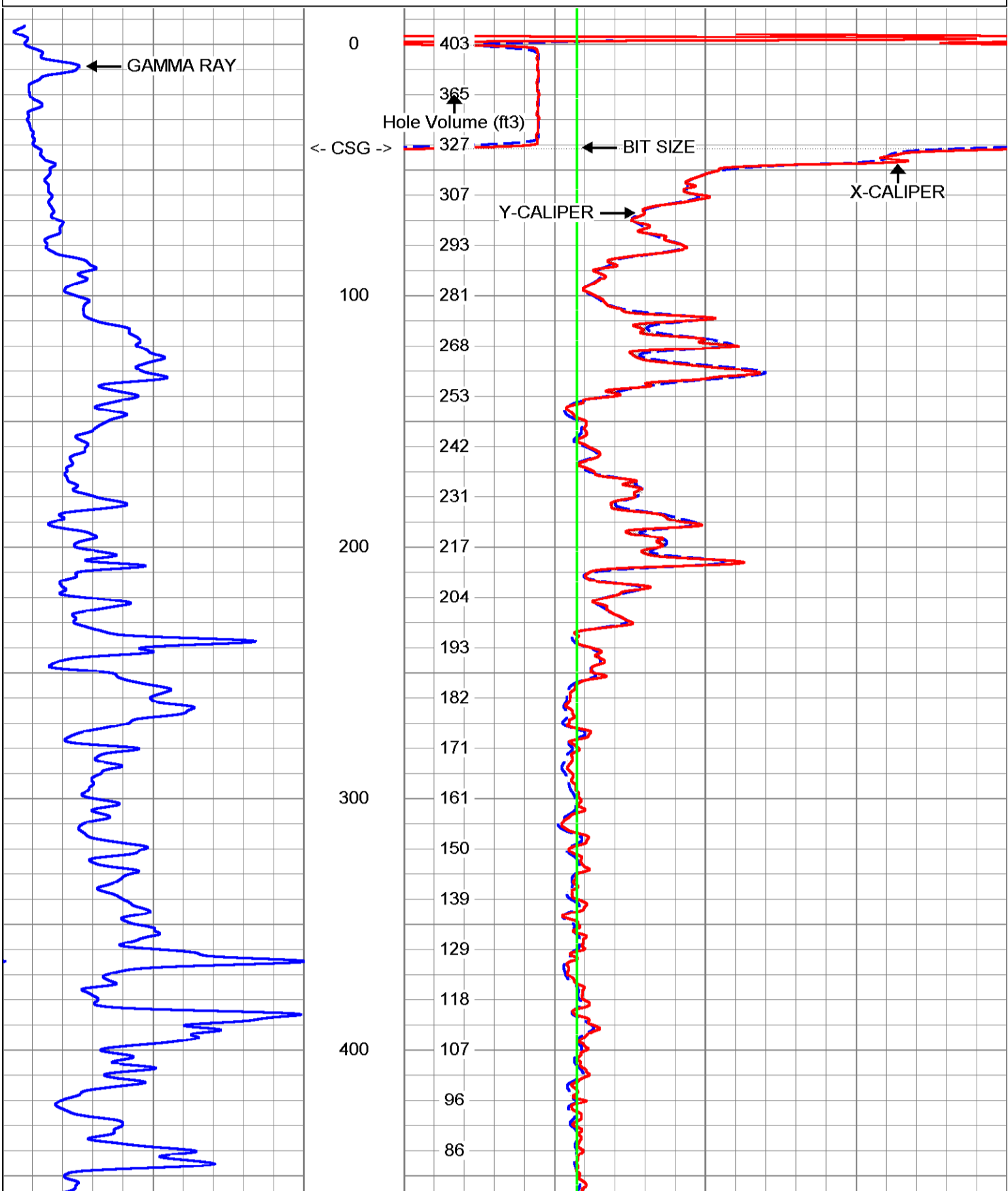
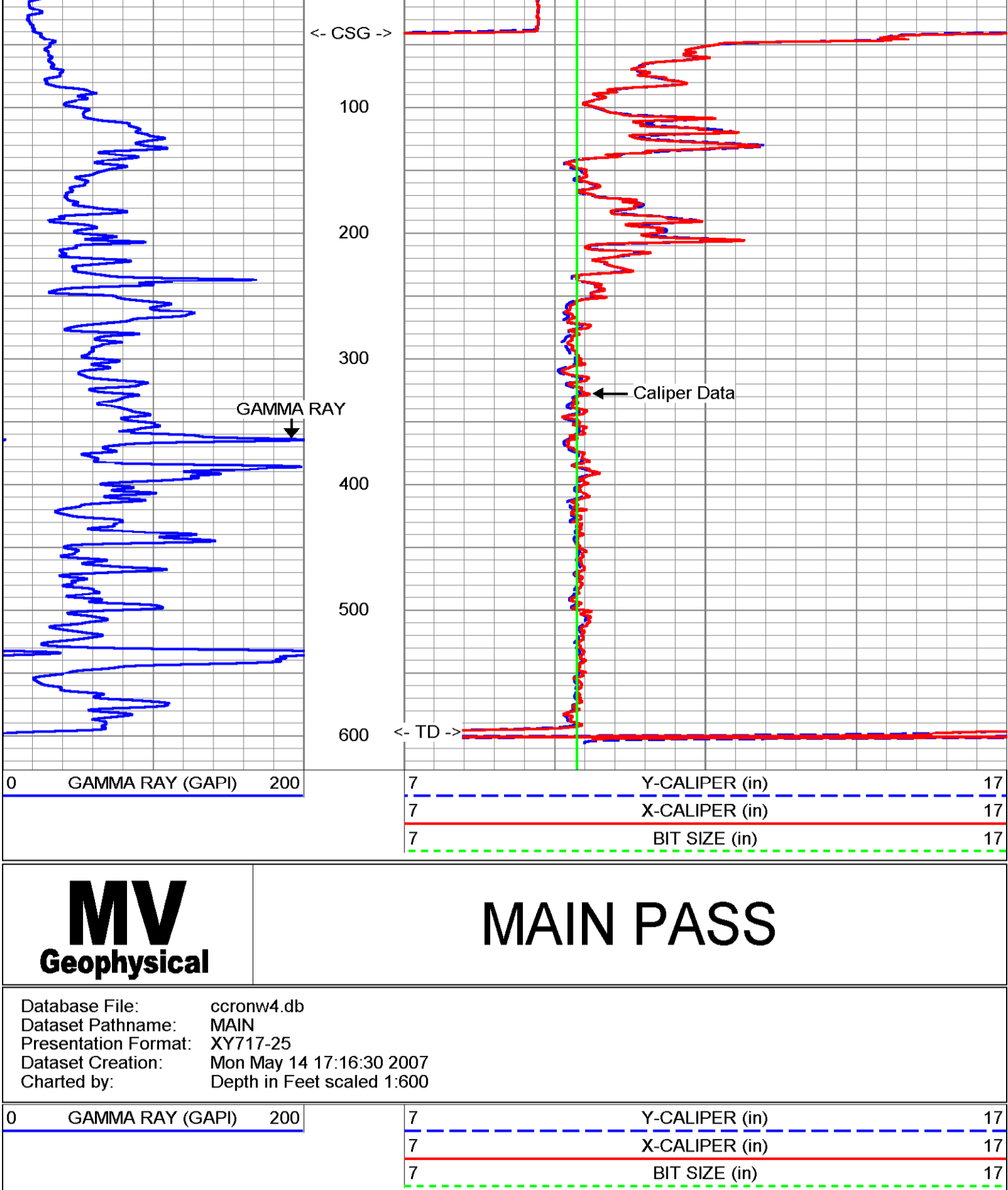
Company: Diversified Drilling Corp.
 Well: NW 4N
 Field: Cape Coral
 County: Lee
 State/Prv: Florida
 Location: SW corner of NE 14th Pl. & Kismet Pkwy
 Cape Coral Water Utilities Department
 MWH
 Log Measured From: G.L.
 Permanent Datum: G.L.
 Elevation: Elevation
 Drilling Measure From: G.L.
 Date: 14MAY/2007
 Run Number: 01E
 Depth: 559'
 Bottom Log/Interval: 559'
 Top Log/Interval: SURFACE
 Operator: S. J. ALLEN
 Operator Title: NAVA
 Density / Viscosity: NA
 Max. Recorded Temp: NA
 Estimated Cement Top: 16:15:42/2007
 Time Log to Bottom: 16:15:42/2007
 Equipment Number: M-SS-1
 Location: Ft. Myers
 Recorded By: S. J. ALLEN
 Reviewed By: S. J. ALLEN
 X-Reference: S. J. ALLEN
 Y-Reference: S. J. ALLEN
 Run Number: 01E
 Bit: 4 1/2"
 From: 10'
 To: 10'
 Size: 589' CALIPER
 Weight: 333' Wt
 Side: 333' Wt
 Bottom: 42'
 Surface: SURFACE
 Surface: SURFACE
 User No.: 2607133
 P.O. #:
 JCS No.:

<<< Fold Here >>>

All interpretations are opinions based on inferences from electrical or other measurements and we cannot and do not guarantee the accuracy or correctness of any interpretation, and we shall not, except in the case of gross or willful negligence on our part, be liable or responsible for any loss, costs, damages, or expenses incurred or sustained by anyone resulting from any interpretation made by any of our officers, agents or employees. These interpretations are also subject to our general terms and conditions set out in our current Price Schedule.

Comments

X-Y Caliper Arm Extensions: 33"

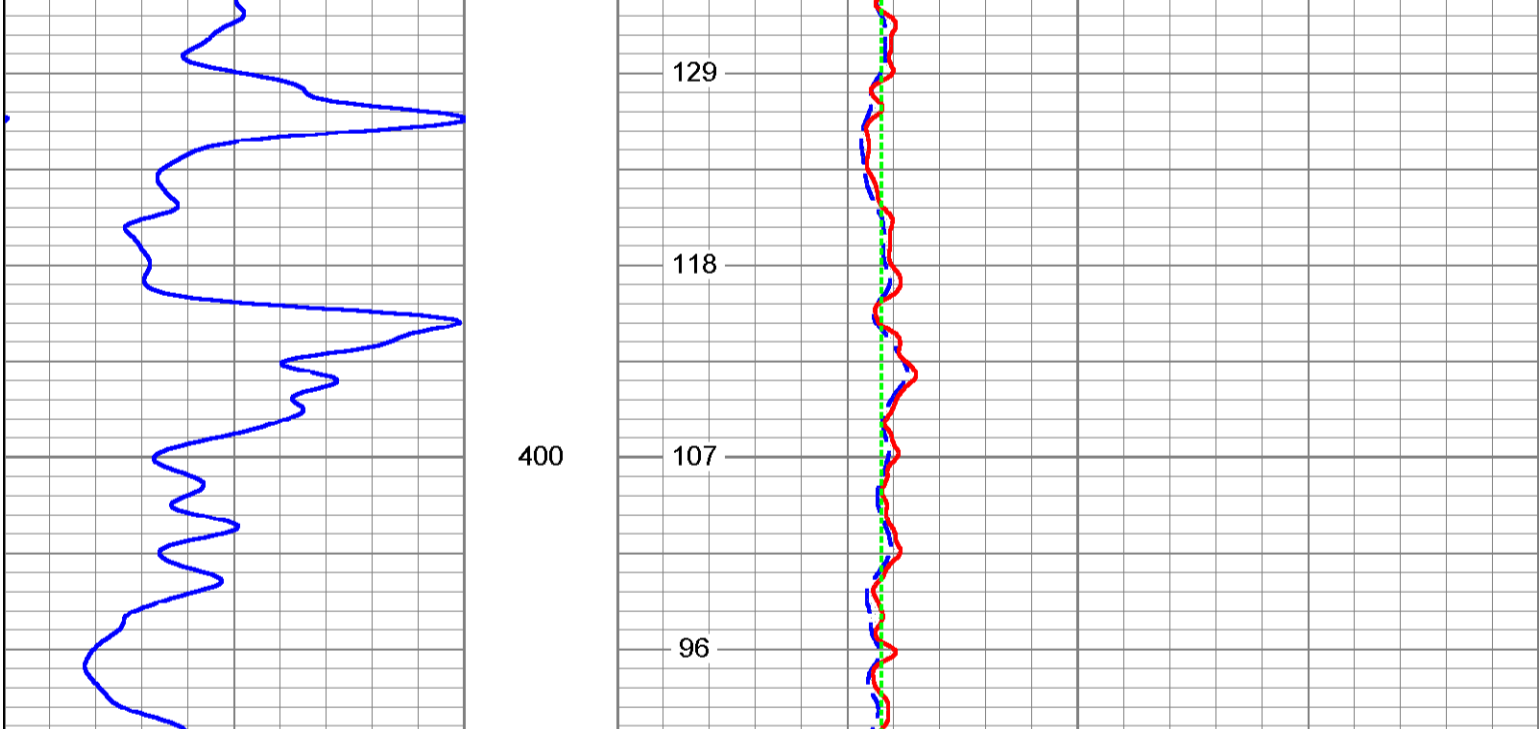


XY Caliper Calibration Report

Serial Number:	01S	XYCS
Tool Model:	10	in
Performed:	Mon May 14 16:43:36 2007	in
Small Ring:	33	in
Large Ring:		
Reading with Small Ring:	1120	1122.7
Reading with Large Ring:	1982.2	1983
Gain:	0.0266759	0.0267349
Offset:	-19.8771	-20.0152

Gamma Ray Calibration Report

Serial Number:	01	GROH
Tool Model:	120	GAPI
Performed:	Mon May 14 14:22:45 2007	
Calibrator Value:	4.5842	cps
Background Reading:	123.247	cps
Calibrator Reading:	1.01127	GAPI/cps
Sensitivity:		



Dataset: run1/pass1
 Total Length: 9.35 ft
 Total Weight: 150.00 lb
 O.D.: 3.50 in

Company	Diversified Drilling Corp.	Company	Diversified Drilling Corporation
Well	NW 4N	Well	NW 4N
Field	Cape Coral	Field	Cape Coral
County	Lee	County	Lee
State/Prv	Florida	State/Prv	Florida
Location	SW corner of NE 14th Pl. & Kismet Pkwy Cape Coral Water Utilities Department	Location	SW corner of NE 14th Pl. & Kismet Pkwy Cape Coral Water Utilities Department
Permanent Datum	G.L.	Elevation	NONE
Log Measured From	G.L.	K.B.	G.L.
Drilling Measured From	G.L.	D.F.	G.L.
Date	14-JUN-2007		
Run Number	TWO-8		
Depth Driller	545.5'		
Bottom Logger	545.5'		
Bottom Logged Interval	545.5'		
Top Log Interval	545.5'		
Top Log Interval	545.5'		
Type Fluid	MUD		
Density / Viscosity	NANA		
Max. Recorded Temp.	na		
Estimated Cement Top	NA		
Time Loger on Bottom	12:15 6/14/2007		
Equipment Number	MVCS-1		
Location	FT Myers		
Recorded By	S Miller/C Miller		
Witnessed By	B-Bill (MMH)		
Run Number	Batchfile Record		
ONE	9:37.5'		
TWO	18.75'		
Batchfile	545.5'		
Casing Record	20"	Wt/ft	3.75 Wt
Production String	Size	TOP SURFACE	Bottom
Production String	42"	Weight	From
Production String	60"	From	To
Production String	545.5'		
Production String	2007168		
Production String	P.O. #:		
Production String	Job No.:		
Production String	* FINAL PRINT *		

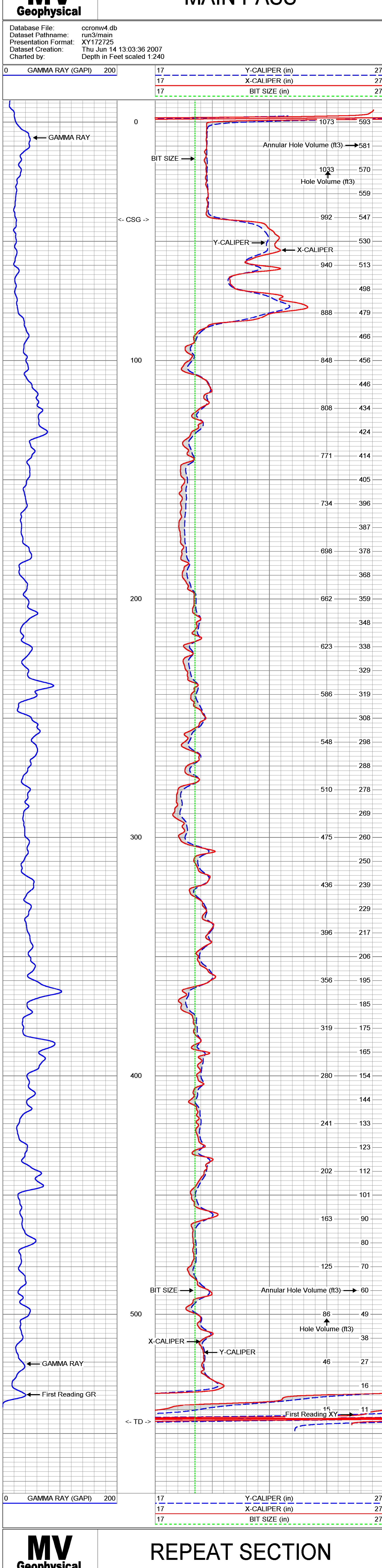
All interpretations are opinions based on inferences from electrical or other measurements and we cannot and do not guarantee the accuracy or correctness of any interpretation, and we shall not, except in the case of gross or willful negligence on our part, be liable or responsible for any loss, costs, damages, or expenses incurred or sustained by anyone resulting from any interpretation made by any of our officers, agents or employees. These interpretations are also subject to our general terms and conditions set out in our current Price Schedule.

Comments

X-Y Caliper Arm Extensions: 51"
FUTURE CASING SIZE: 12.75"

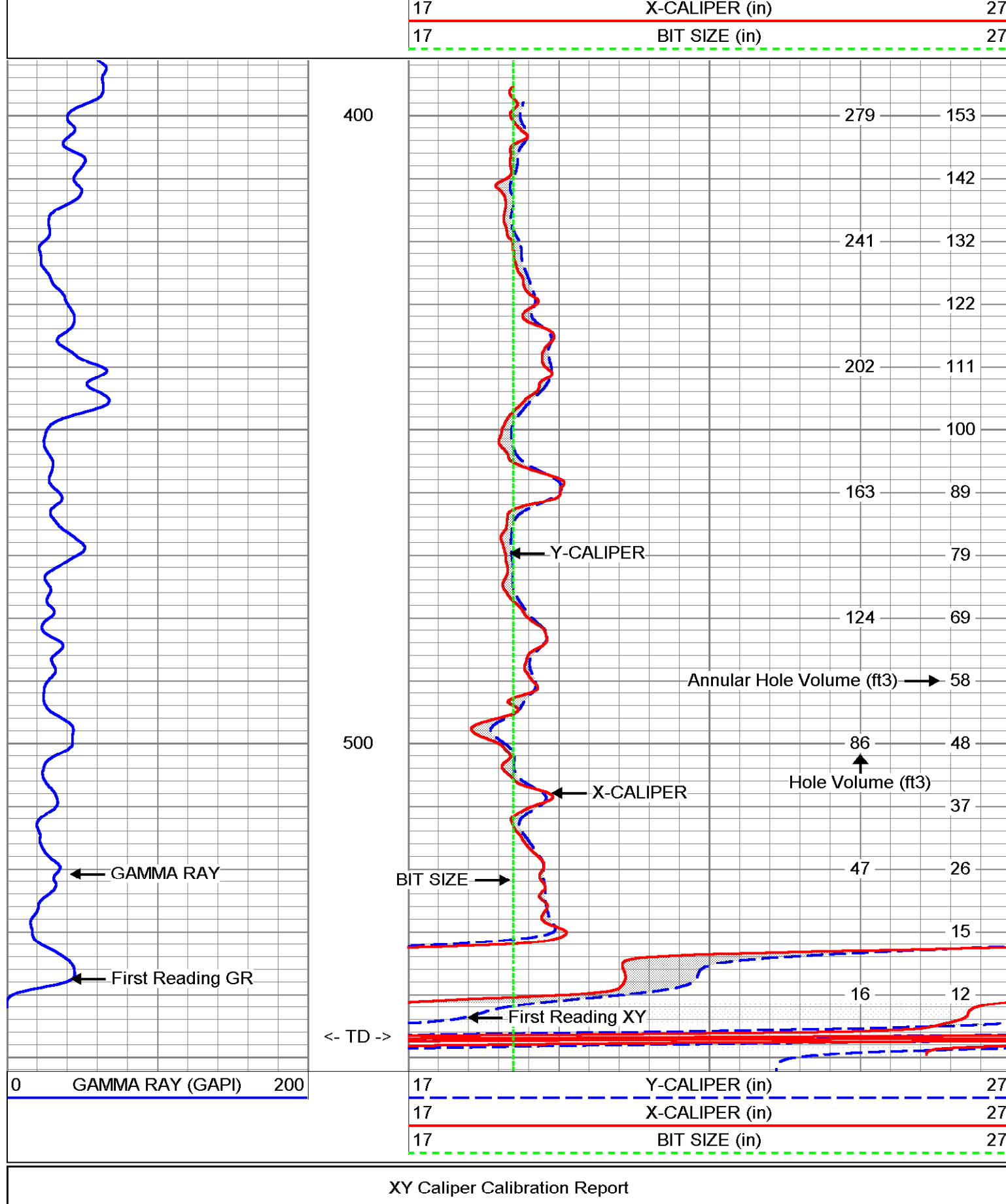
MAIN PASS

Database File: ccronw4.db
Dataset Pathname: run3/main
Presentation Format: XY172725
Dataset Creation: Thu Jun 14 13:03:36 2007
Charted by: Depth in Feet scaled 1:240



REPEAT SECTION

Database File: ccronw4.db
Dataset Pathname: run3/repeat
Presentation Format: XY172725
Dataset Creation: Thu Jun 14 13:08:19 2007
Charted by: Depth in Feet scaled 1:240

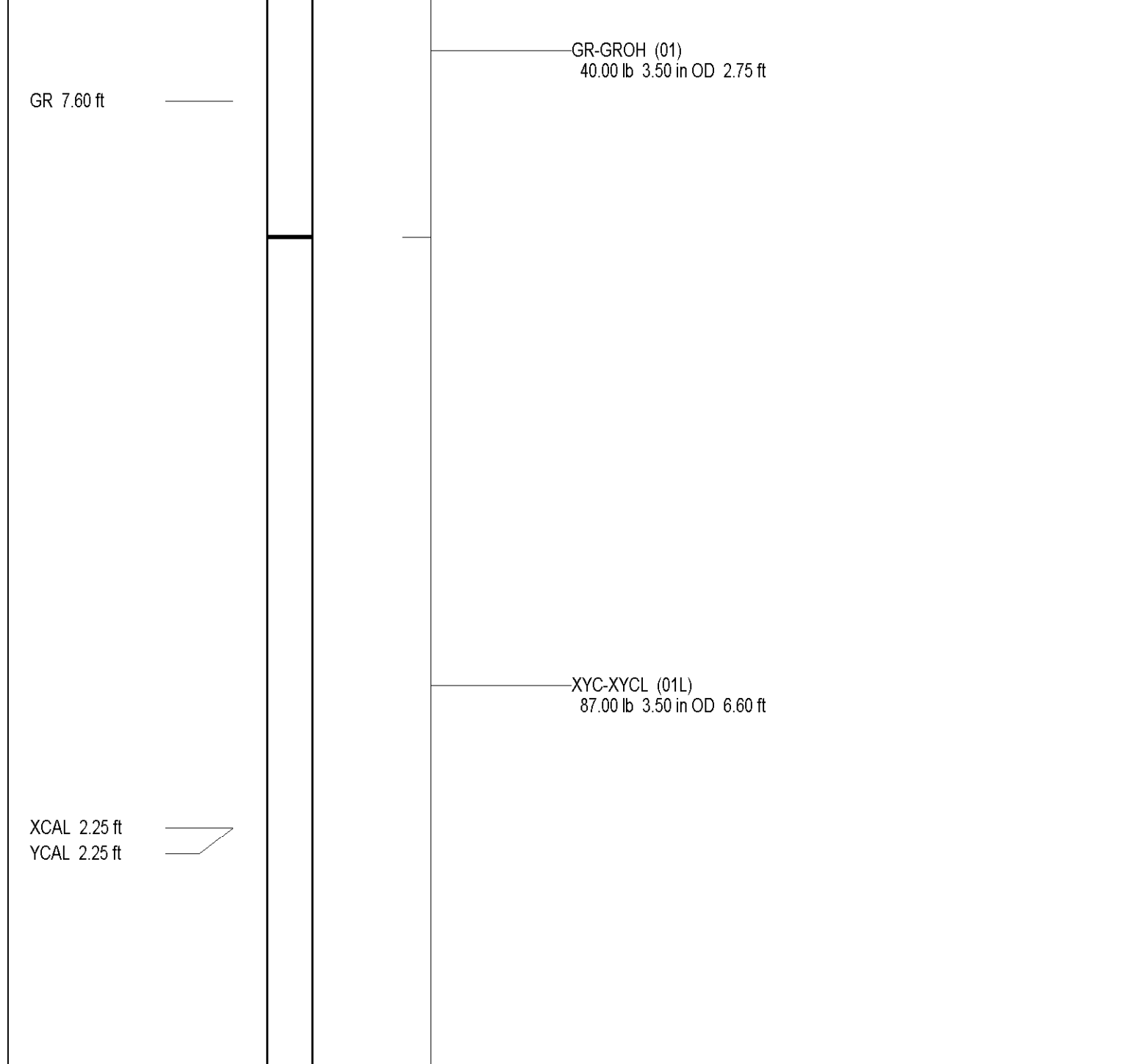


XY Caliper Calibration Report

Serial Number:	01L		
Tool Model:	XYCL		
Performed:	Thu Jun 14 12:26:24 2007		
Small Ring:	19.25	in	
Large Ring:	51	in	
Reading with Small Ring:	1244		cps
Reading with Large Ring:	1980.1		cps
Gain:	0.0431327		
Offset:	-34.4071		

Gamma Ray Calibration Report

Serial Number:	01		
Tool Model:	GROH		
Performed:	Wed Jun 13 12:48:16 2007		
Calibrator Value:	120	GAPI	
Background Reading:	4.668	cps	
Calibrator Reading:	123.366	cps	
Sensitivity:	1.01097	GAPI/cps	



Dataset: run3/pass2
Total Length: 9.35 ft
Total Weight: 127.00 lb
O.D.: 3.50 in

