

Location **Diplomat Pkwy (W of Chiquita)
Cape Coral Water Utilities Department
MWH**

Other Services
XY/GR/DIL
FCT/BHC
FLOW/DHTV

Date **17-JAN-2007**

Run Number **THREE**

Depth Driller **864**

Depth Logger **865**

Bottom Logged Interval **865**

Open Hole Size **11"**

Type Fluid **H₂O**

Density / Viscosity **N/A**

Max. Recorded Temp. **see FCT log**

Estimated Cement Top **NA**

Time Well Ready **08:00 11/17/2007**

Time Logger on Bottom **10:00 11/17/2007**

Equipment Number **MWGS-1**

Location **FL Myers**

Recorded By **S. Miller/C. Miller**

Witnessed By **G. Young (MWH)**

Borehole Record		Tubing Record	
Run Number	Bit	From	To
ONE	7.875"	40'	662'
TWO	18.75"	40'	659'
THREE	11"	655'	864'

Casing Record		Top		Bottom	
Size	Wgt/Lft	SURFACE		SURFACE	
20"	37.5	WT		40'	
12" FRP	12	ID		12" ID	
Production String				40'	
Liner				655'	

All interpretations are opinions based on inferences from electrical or other measurements and we cannot and do not guarantee the accuracy or correctness of any interpretation, and we shall not, except in the case of gross or willful negligence on our part, be liable or responsible for any loss, costs, damages, or expenses incurred or sustained by anyone resulting from any interpretation made by any of our officers, agents or employees. These interpretations are also subject to our general terms and conditions set out in our current Price Schedule.

Comments

STATIC and DYNAMIC DOWN passes were performed.
Cw=4790 uS/cm @ 85.1 degF (Dynamic Sample). Q ≈ 300 gpm.
FLUID RESISTIVITY CALIBRATION REPORT (Performed: 11-JAN-07 10:45))

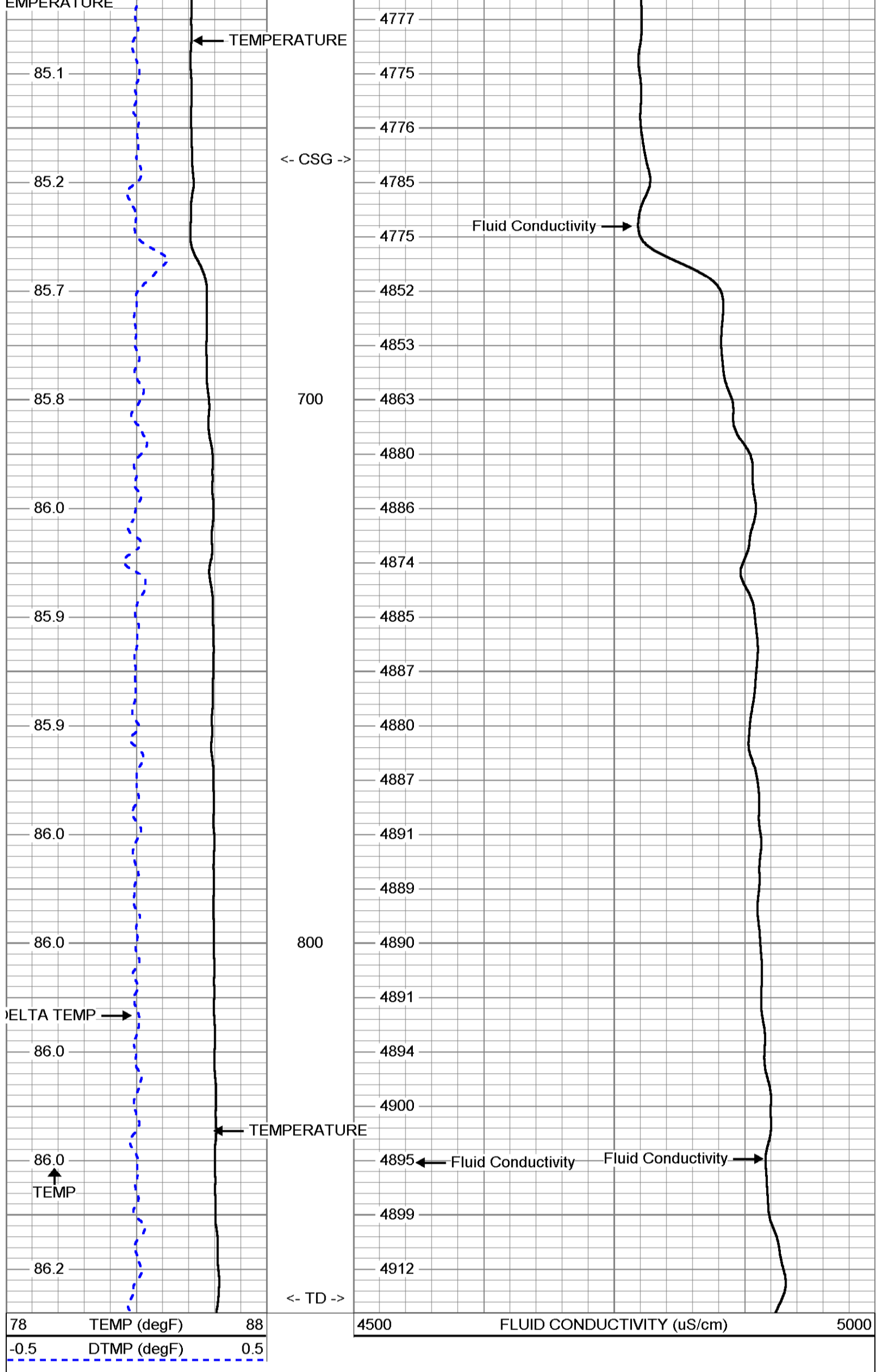
TEMPERATURE CALIBRATION REPORT (Performed: 11-JAN-07 10:15)

uS/cm	CPS
4018.4	2824.25
8828.5	2660.58
14891.2	2234.36

DEG-F	CPS
34.81	2349.61
142.22	6966.29

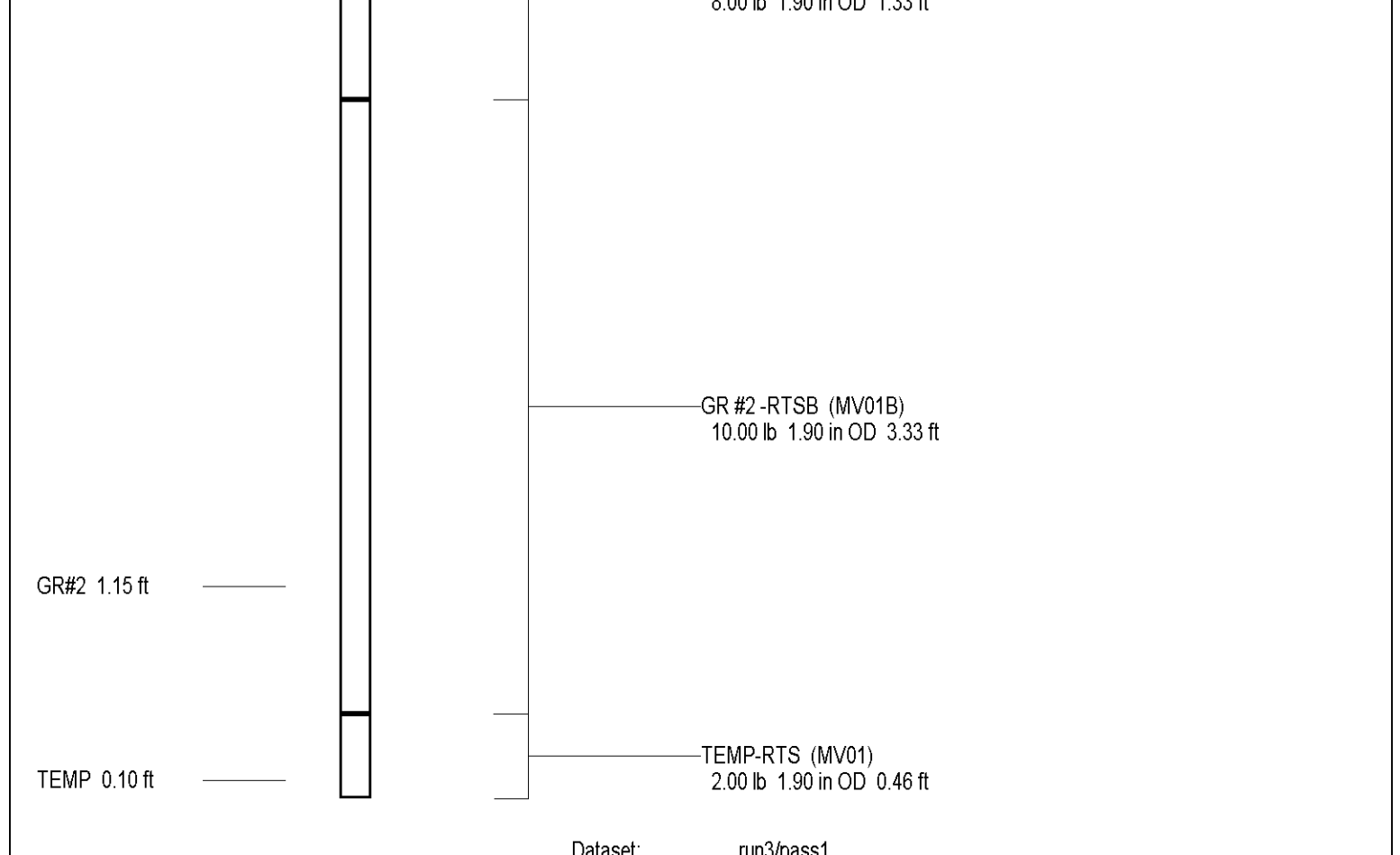
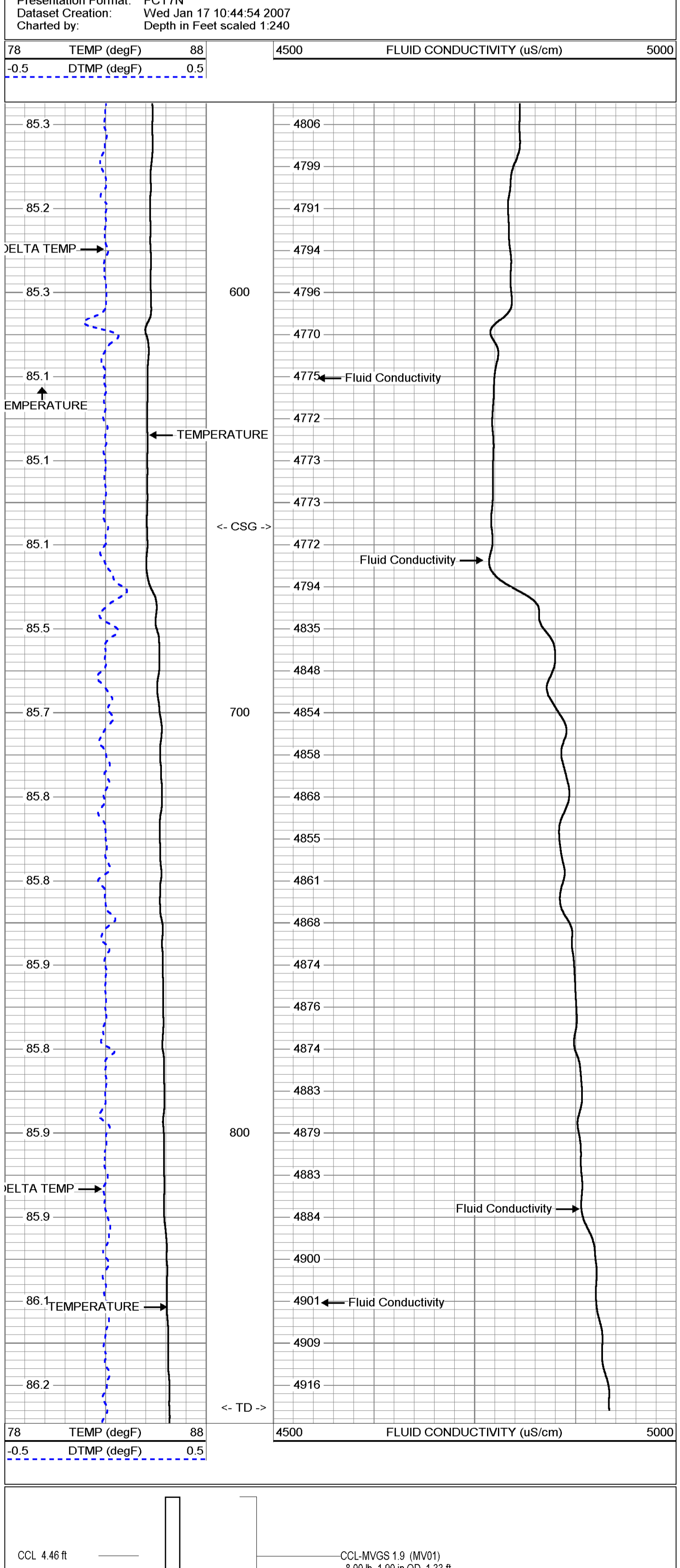
DYNAMIC FCT DOWN

Database File: ccro7n.db
Dataset Pathname: run3/DFCT
Presentation Format: FCT7N
Dataset Creation: Wed Jan 17 11:09:34 2007
Charted by: Depth in Feet scaled 1:240



STATIC FCT DOWN

Database File: ccro7n.db
Dataset Pathname: run3/SFCT
Presentation Format: FCT7N
Dataset Creation: Wed Jan 17 10:44:54 2007
Charted by: Depth in Feet scaled 1:240



Company: Diversified Drilling Corp.
 Well: NW 7N
 Field: Cape Coral
 County: Lee
 Location: Cape Coral Water Utilities Department
 State/Prv: Florida

Other Services:
 XYGR/DLC
 FLOW/DHTV

Date: 17-JAN-2007
 Run Number: THREE
 Log Measured From: G.L.
 Bottom Logged Interval: 663'
 Permanent Datum: G.L.
 Elevation: K.B. G.L.

Time Logged on Bottom: 12:30:17/2007
 Equipment: F1 525
 Recorder: S (Miller/MWH)
 Witnessed By: C Dodd (DDC)

Run Number: 755'
 T.V.O: 18.75'
 T.H.R.E: 11"
 Gauge Record: 20"
 Surface String: 3.75' WJ
 Production String: 12" ID

Estimated Cement Top: NA
 Type of Recorder: see FCT 09
 Max. Recorded Temp.: NA

Open Hole Size: 14"
 Tool Log Interval: SURFACE

Time Well Ready: 08:00:17/2007
 Estimated Cement Top: NA

Time Logged on Bottom: 12:30:17/2007
 Equipment: F1 525
 Recorder: S (Miller/MWH)
 Witnessed By: C Dodd (DDC)

Run Number: 755'
 T.V.O: 18.75'
 T.H.R.E: 11"
 Gauge Record: 20"
 Surface String: 3.75' WJ
 Production String: 12" ID

Estimated Cement Top: NA
 Type of Recorder: see FCT 09
 Max. Recorded Temp.: NA

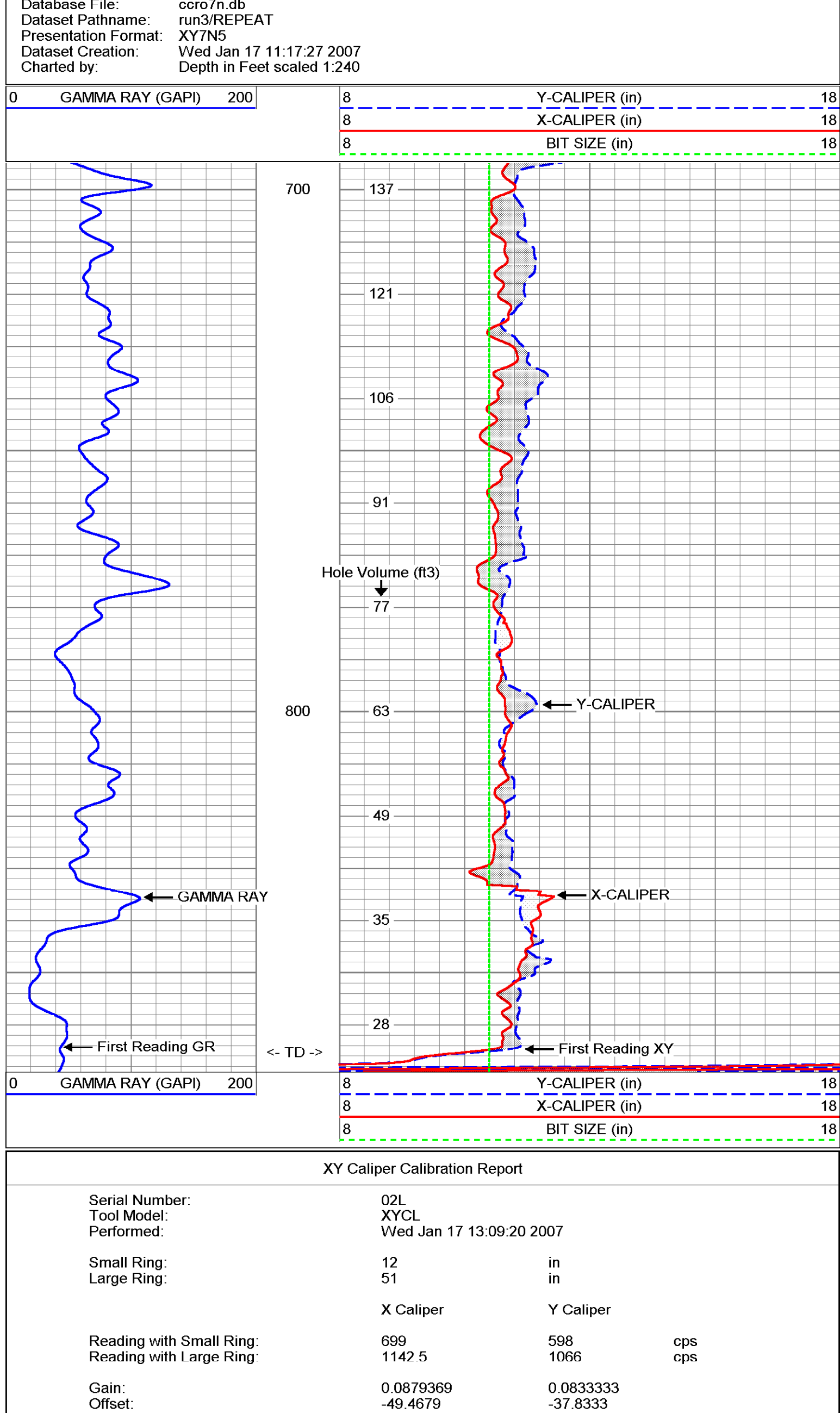
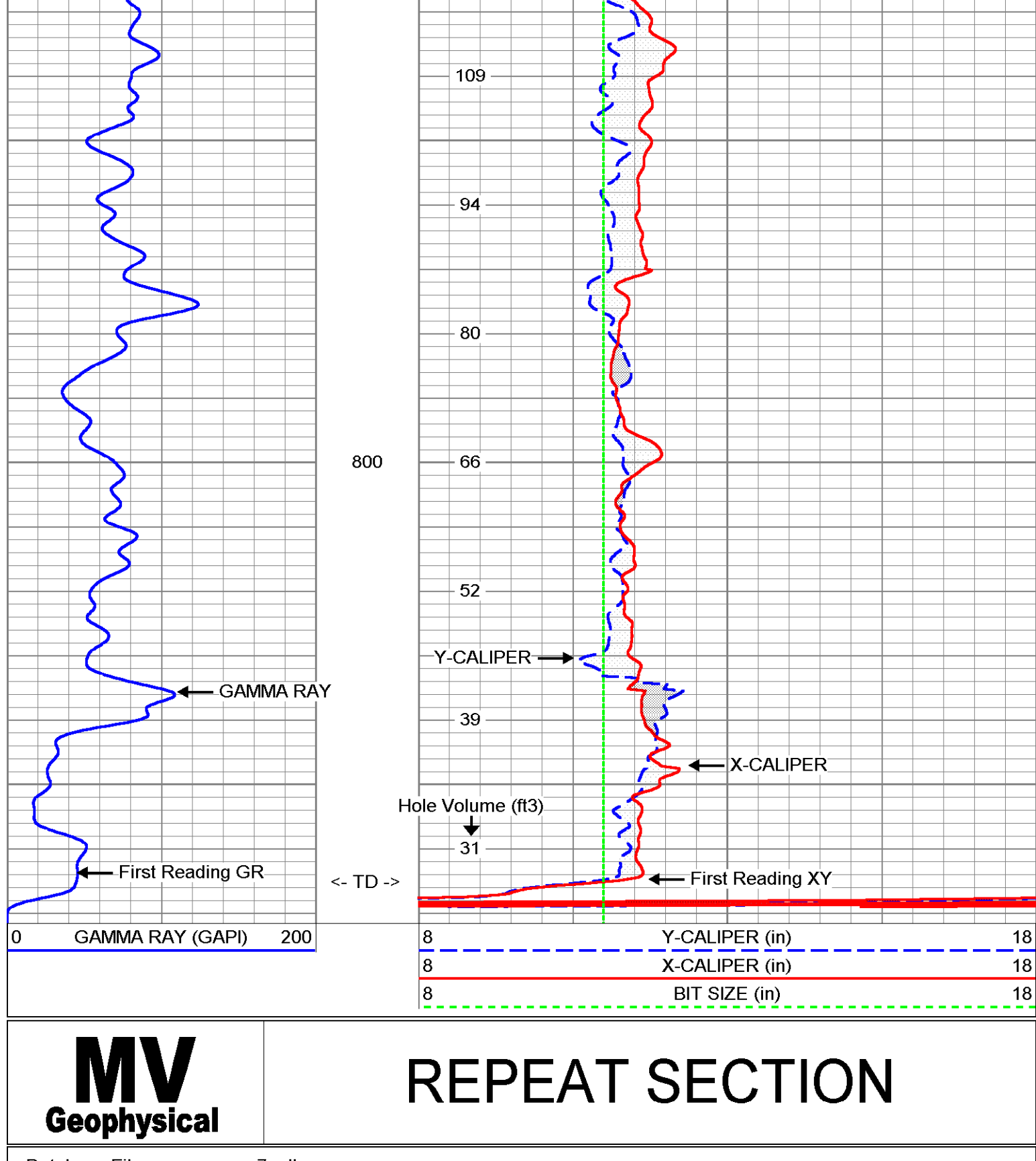
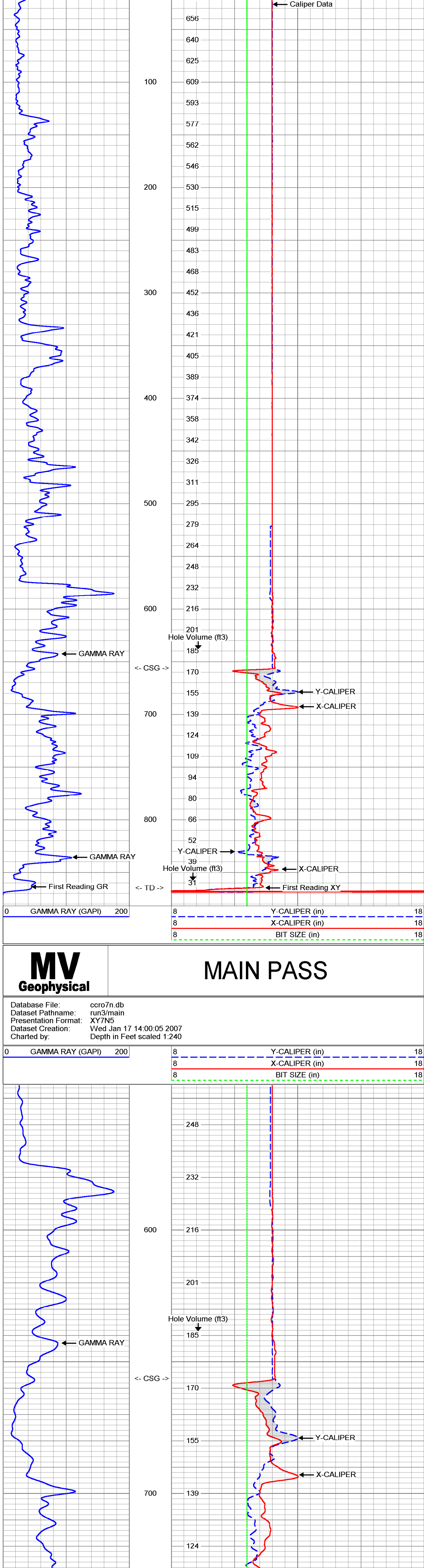
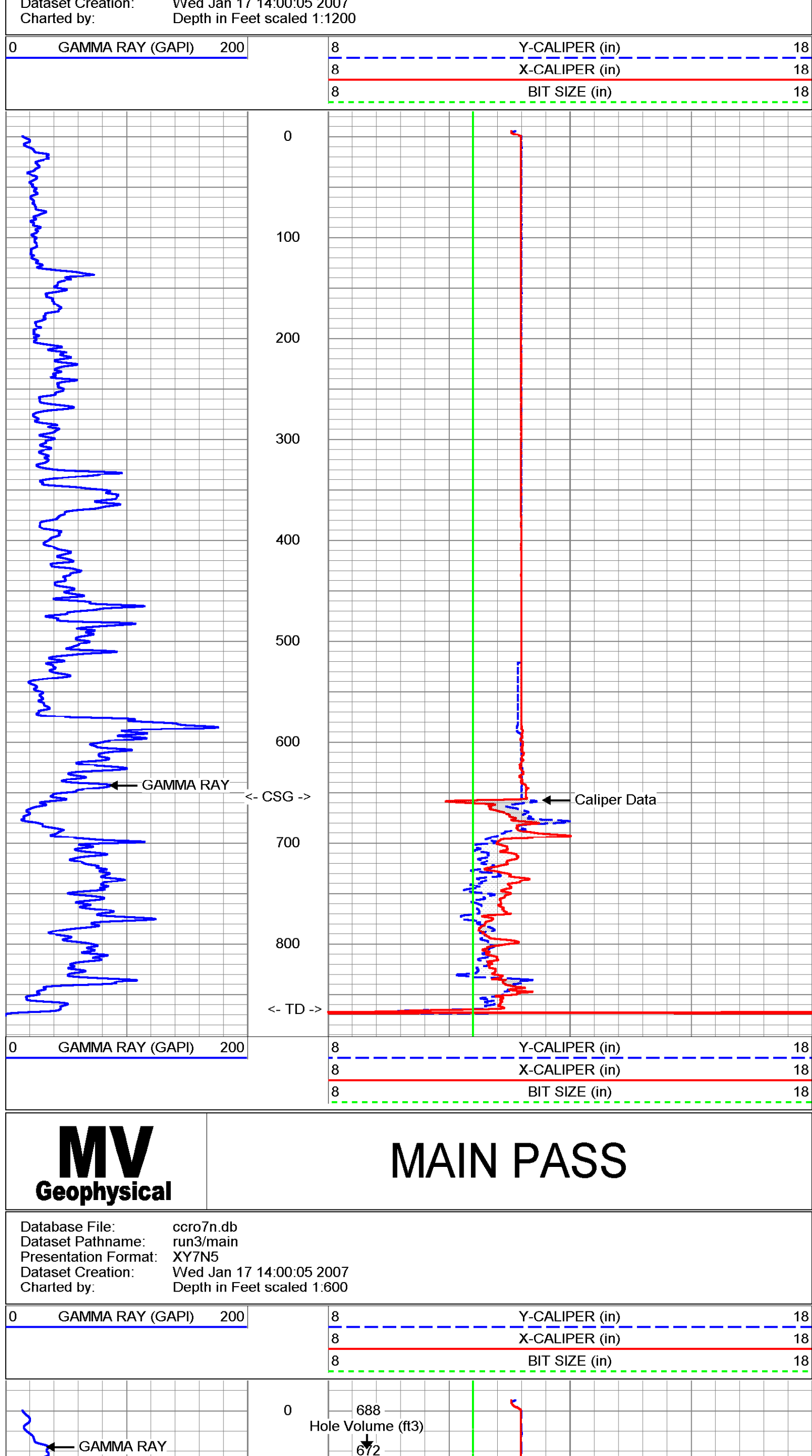
Open Hole Size: 14"
 Tool Log Interval: SURFACE

Time Well Ready: 08:00:17/2007
 Estimated Cement Top: NA

All interpretations are opinions based on inferences from electrical or other measurements and we cannot and do not guarantee the accuracy or correctness of any interpretation, and we shall not, except in the case of gross or willful negligence on our part, be liable or responsible for any loss, costs, damages, or expenses incurred or sustained by anyone resulting from any interpretation made by any of our officers, agents or employees. These interpretations are also subject to our general terms and conditions set out in our current Price Schedule.

Comments

X-Y Caliper Arm Extensions: 51"



XY Caliper Calibration Report

Serial Number:	02L		
Tool Model:	XYCL		
Performed:	Wed Jan 17 13:09:20 2007		
Small Ring:	12	in	
Large Ring:	51	in	
	X Caliper	Y Caliper	
Reading with Small Ring:	699	598	cps
Reading with Large Ring:	1142.5	1086	cps
Gain:	-0.0879369	0.0833333	
Offset:	-49.4679	-37.8333	

Gamma Ray Calibration Report

Serial Number:	02	
Tool Model:	GROH	
Performed:	Wed Jan 17 12:23:47 2007	
Calibrator Value:	120	GAPI
Background Reading:	28.7515	cps
Calibrator Reading:	132.215	cps
Sensitivity:	1.15982	GAPI/cps

