

---

## City of Punta Gorda, Florida

"A Cooperatively Funded Project With the  
Southwest Florida Water Management District"



---

## Final Report on Exploratory ASR Well Drilling and Testing at the Shell Creek Water Treatment Plant

---

June 2000



MONTGOMERY WATSON

COPIED from FDEP file

---

DESIGNED  
BY

**Interim Report on the Drilling and Testing of the  
Shell Creek Water Treatment Plant Expanded  
Aquifer Storage and Recovery (ASR) Well System**

for:

The City of Punta Gorda

Submitted by:

Montgomery Watson Harza  
1000 North Ashley Drive, Suite 400  
Tampa, Florida 33602

May, 2002

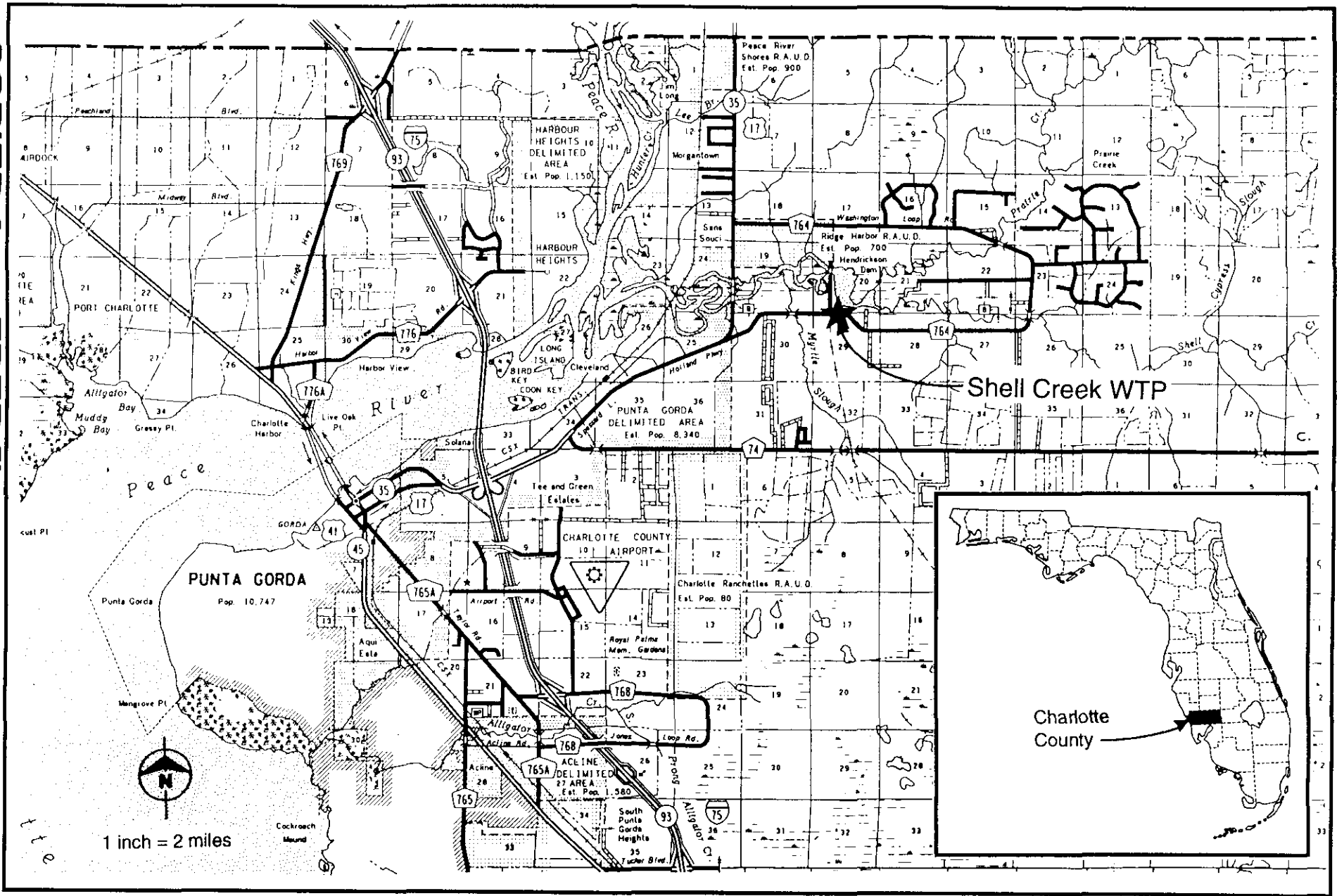


Figure 1-2  
Punta Gorda ASR Location Map

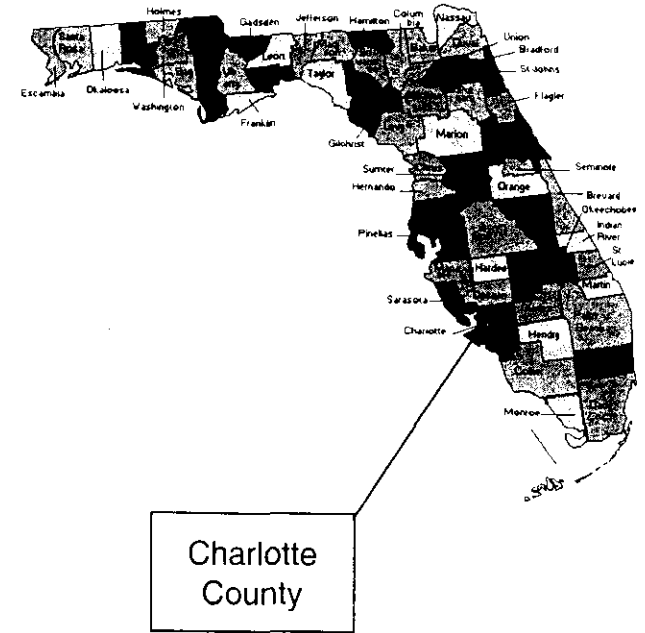
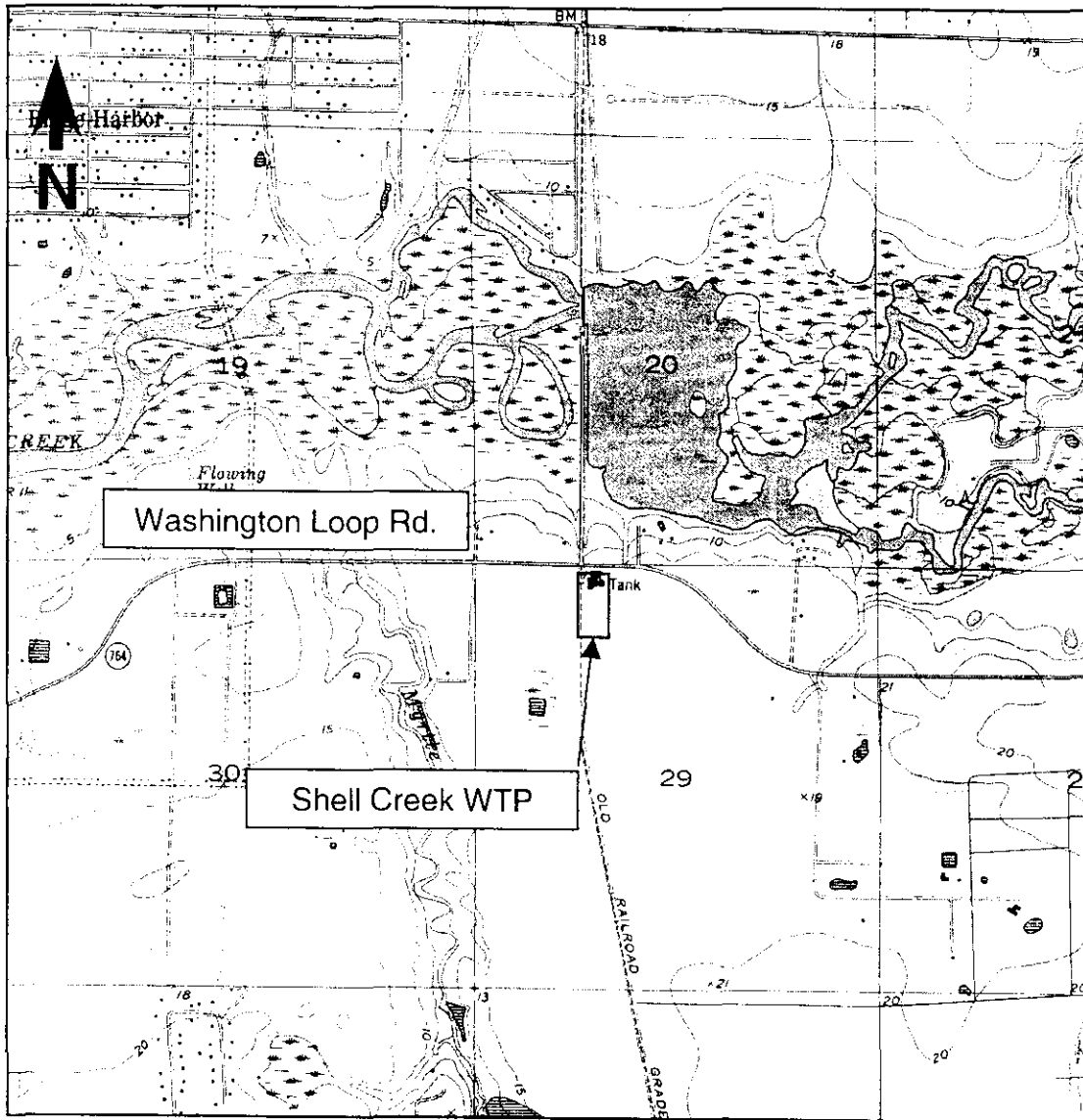


Figure 1-1  
Location Map

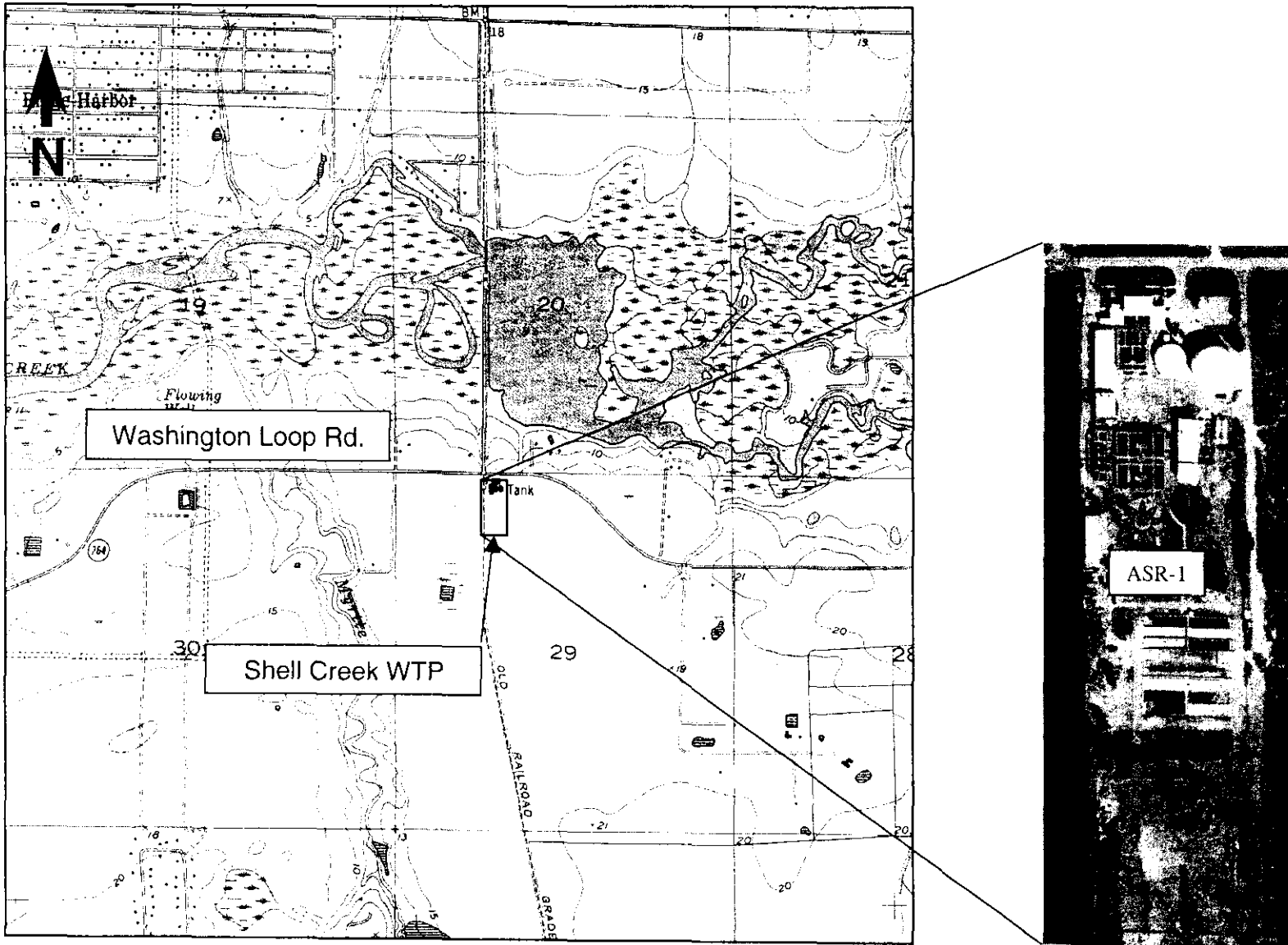
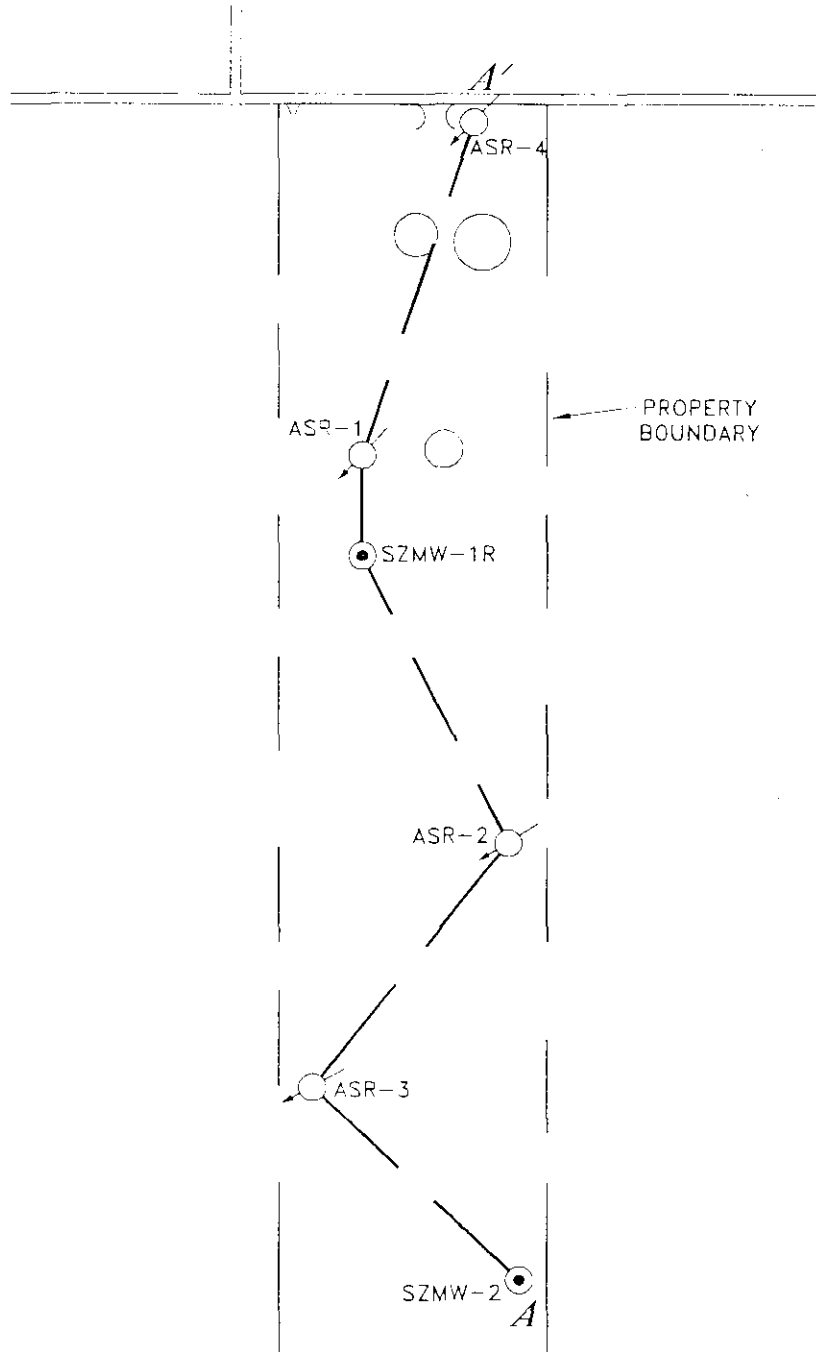
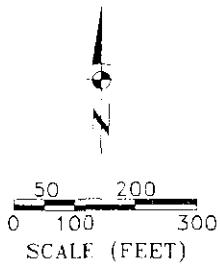


Figure 1-2  
ASR-1 Location Map



PROPERTY  
BOUNDARY



Legend

○ — ASR WELL LOCATION

● — STORAGE ZONE MONITORING WELL LOCATION

A' — A — LINE OF CROSS-SECTION

Water Resource Solutions

PROJECT NAME: CITY OF PUNTA GORDA  
PROJECT NUMBER: 01-04951.HC

DWG. NUMBER: A-014946T1  
DATE: 02/25/05

FIGURE 4. SITE MAP SHOWING WELL LOCATIONS AND LINE OF CROSS-SECTION.

COPIED from FDEP file

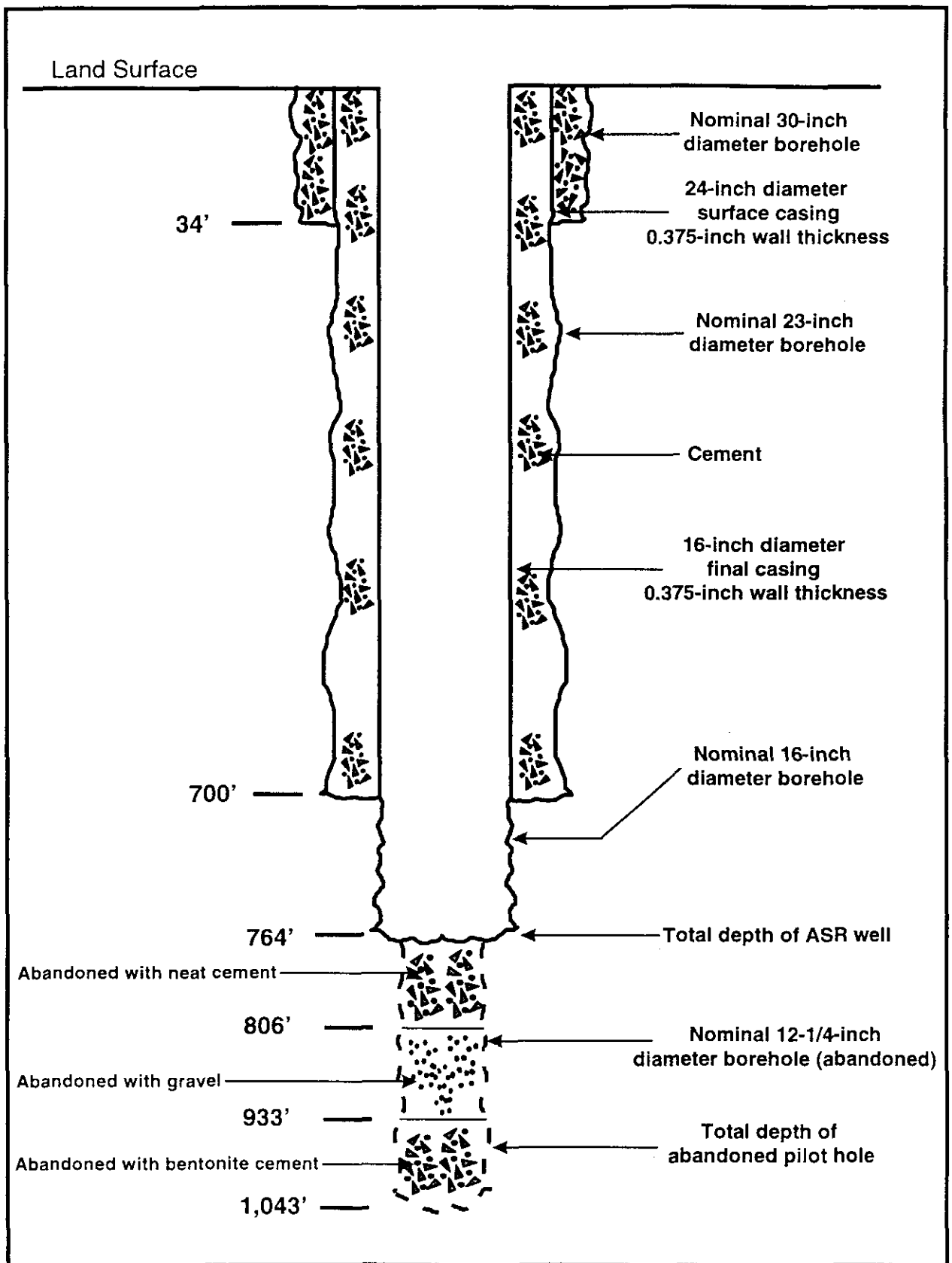


Figure 3-2  
Punta Gorda ASR Construction Details



**TABLE 1****SUMMARY OF CONSTRUCTION DETAILS  
AND CURRENT STATUS  
FOR CITY OF PUNTA GORDA ASR SYSTEM**

<b>Well #</b>	<b>Casing Depth (ft –BLS)</b>	<b>Nominal Casing Diameter (in)</b>	<b>Total Depth (ft –BLS)</b>	<b>Comments</b>
ASR-1	764	12" Steel	923	Plugged back from original TD of 1043'. No longer in use, to be plugged and abandoned
ASR-2	780	16" PVC	998	Never used due to sand problems, to be converted to SZMW after obtaining FDEP approval
ASR-3	810	16" PVC	912	Plugged back from original TD of 1000'
ASR-4R	800	16" PVC	915	Plugged back from original TD of 1026'
SZMW-1R	764	8" PVC	815	To be plugged and abandoned and replaced at another location after obtaining FDEP approval
SZMW-2	785	16" PVC	1001	To be converted to ASR well after obtaining FDEP approval
IAMW-1	345	8" PVC	400	