

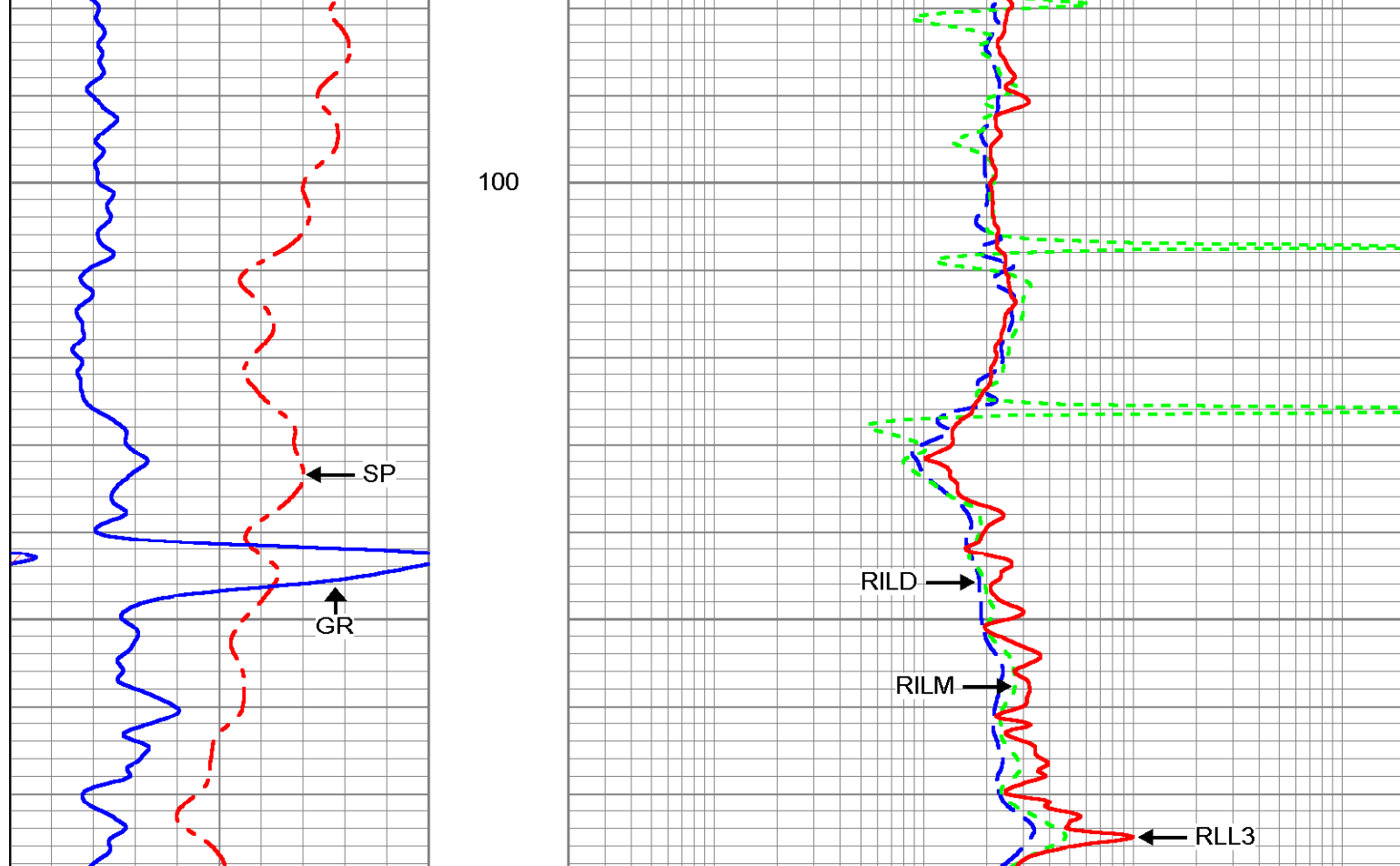
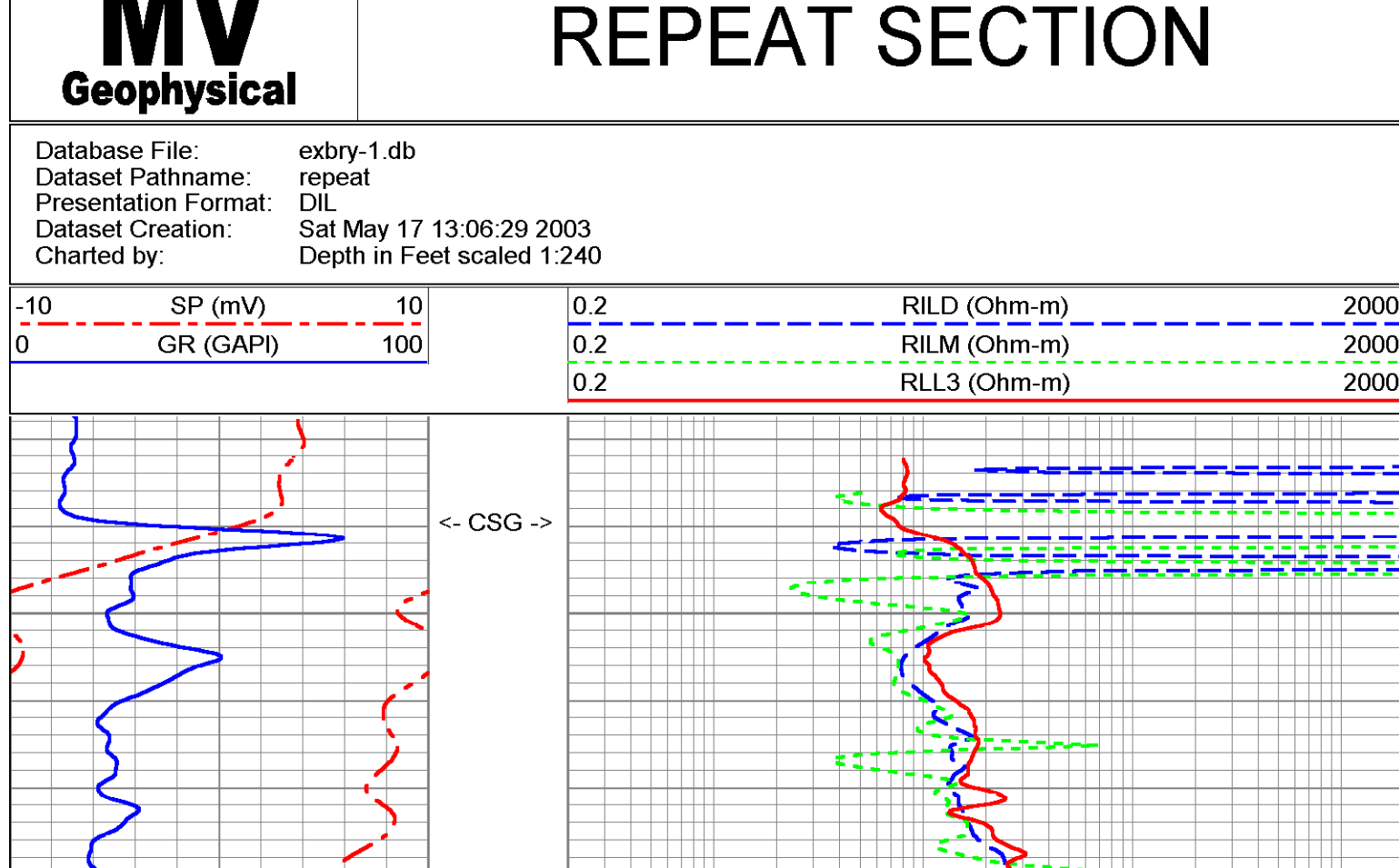
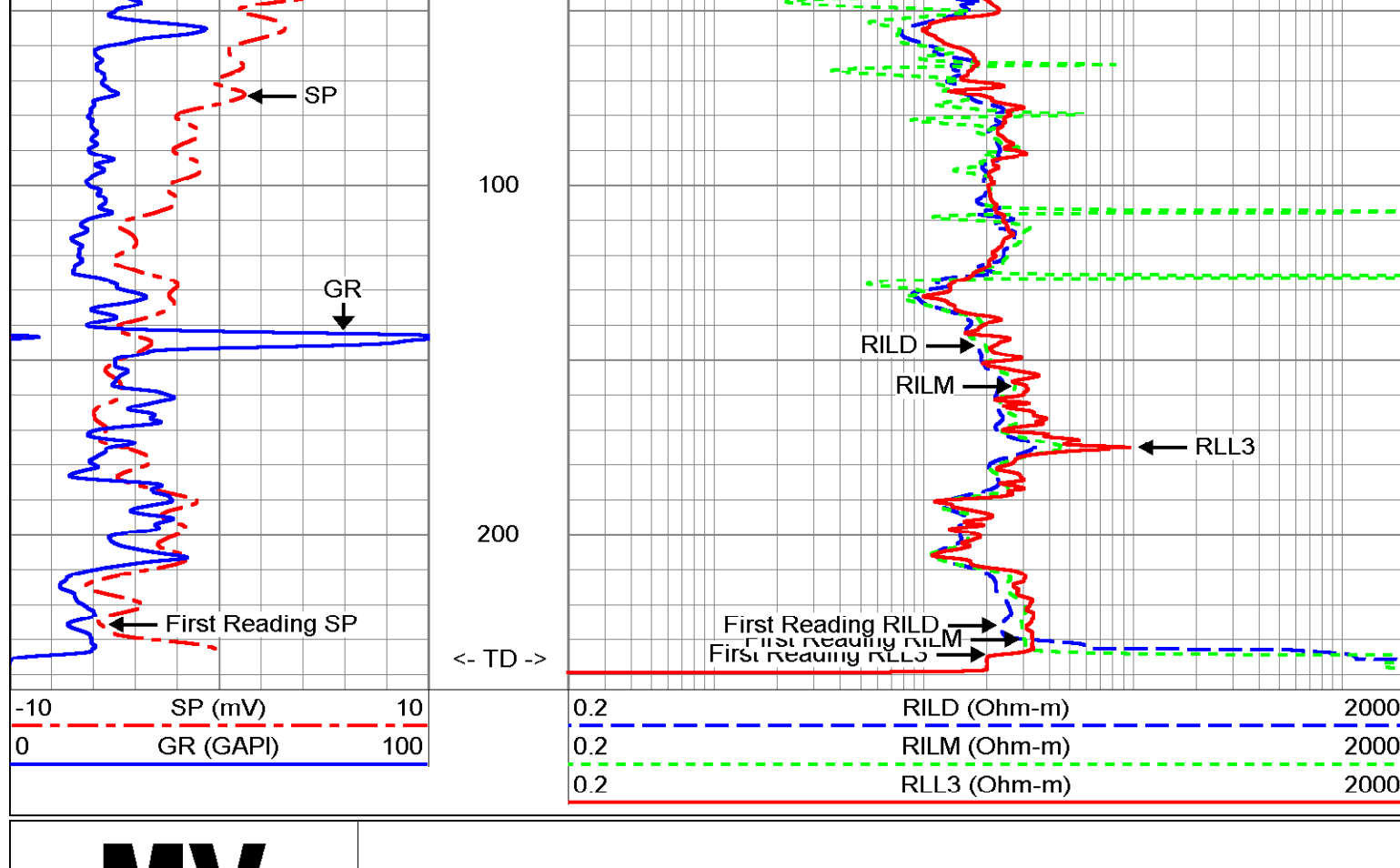
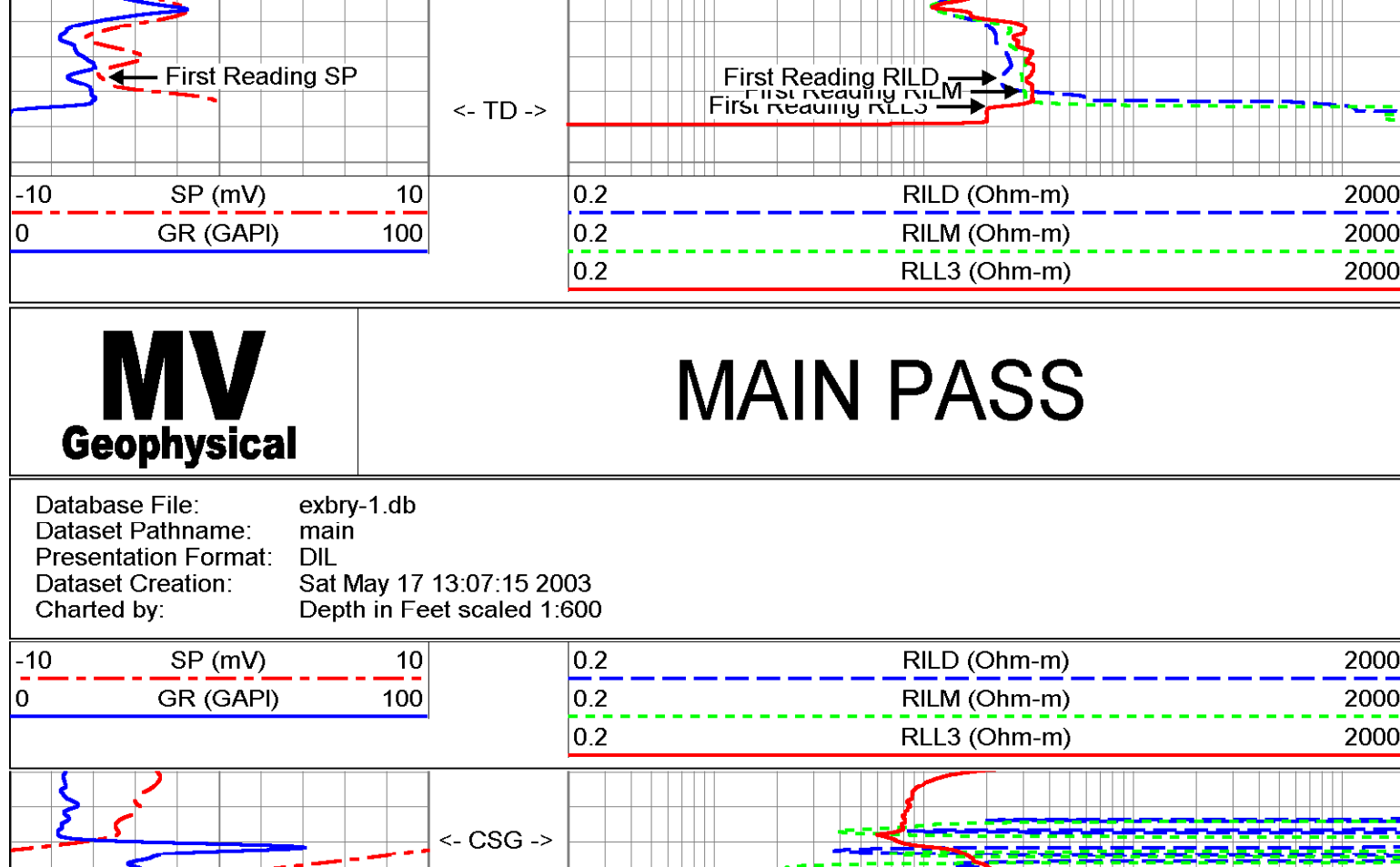
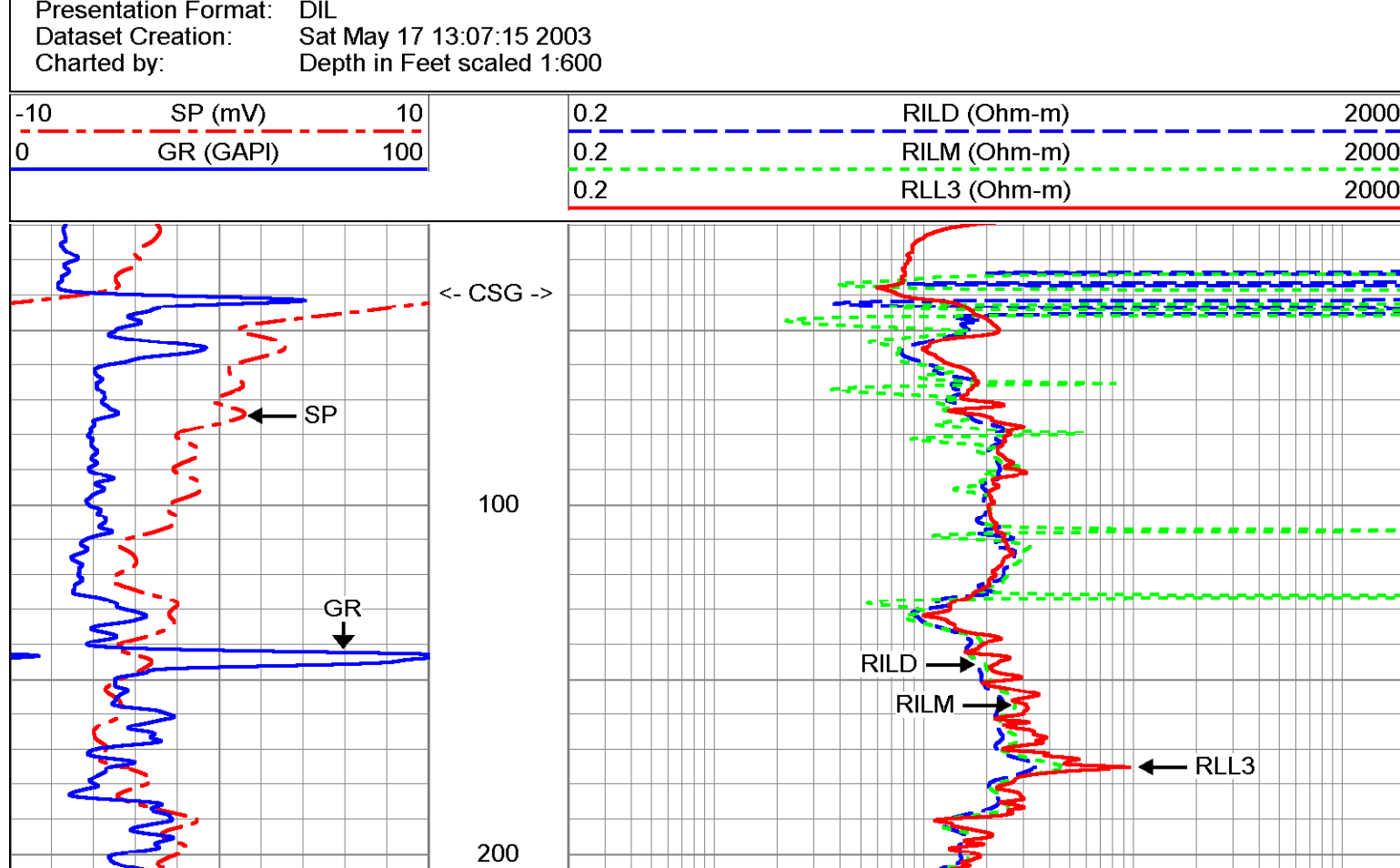
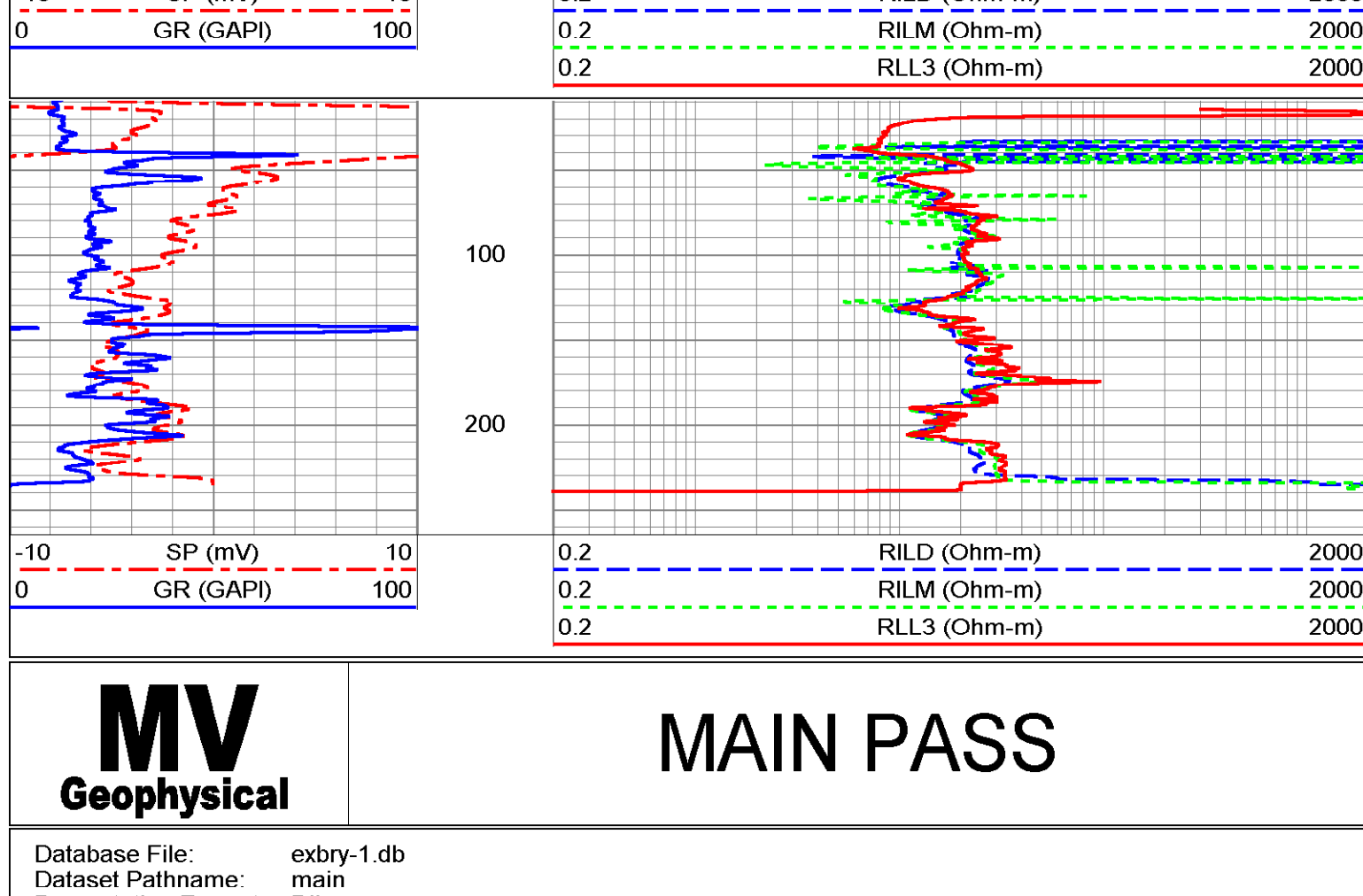
Company	Diversified Drilling Corp.	Well	CRASR-EXBRY-1
Field	Berry Grove	County	Hendry
State/Prv	Florida	Location	Berry Grove
Location	Berry Grove	State/Prv	Florida
Lat: 26 41' 13.209" N		Long: 81 33' 13.710" W	
Other Services		XYGR	
BH/VDL		ST-WMWD / WRS	
Permanent Datum	G.L.	Elevation	
Log Measured From	G.L.	K.B.	
Drilling Measured From	G.L.	D.F.	
Date	19-MAY-2003		
Run Number	ONE		
Depth Driller	235'		
Bottom Logger	236'		
Bottom Log Interval	234'		
Top Log Interval	40"		
Open Hole Size	9 8/25"		
Type Fluid	MWD		
Density / Viscosity	MWD		
Max. Recvd. Temp.	NA		
Estimated Cement Top	NA		
Time Log Start Section	10:00 5/19/03		
Time Log End Section	11:30 5/19/03		
Equipment Number	MNCS-1		
FI Meters			
Location	S. Miller		
Recorded By	G. Richardson (WRS)		
Missed by			
Revised Record			
Run Number	ONE		
Bit	9 6/25"		
From	40'		
To	235'		
Size			
WVFR			
Surface String	4Z		
Production String	0.319 WVFR		
TOP SURFACE			
Bottom	40'		
Line			
Choice No.	2003125		

<<< Fold Here >>>

All interpretations are opinions based on inferences from electrical or other measurements and we cannot and do not guarantee the accuracy or correctness of any interpretation, and we shall not, except in the case of gross or willful negligence on our part, be liable or responsible for any loss, costs, damages, or expenses incurred or sustained by anyone resulting from any interpretation made by any of our officers, agents or employees. These interpretations are also subject to our general terms and conditions set out in our current Price Schedule.

Comments

Rm=8.124 ohm-m @ 81.2 degF
Rmf=6.234 ohm-m @ 81.5 degF
Rmc=10.255 ohm-m @ 82.2 degF



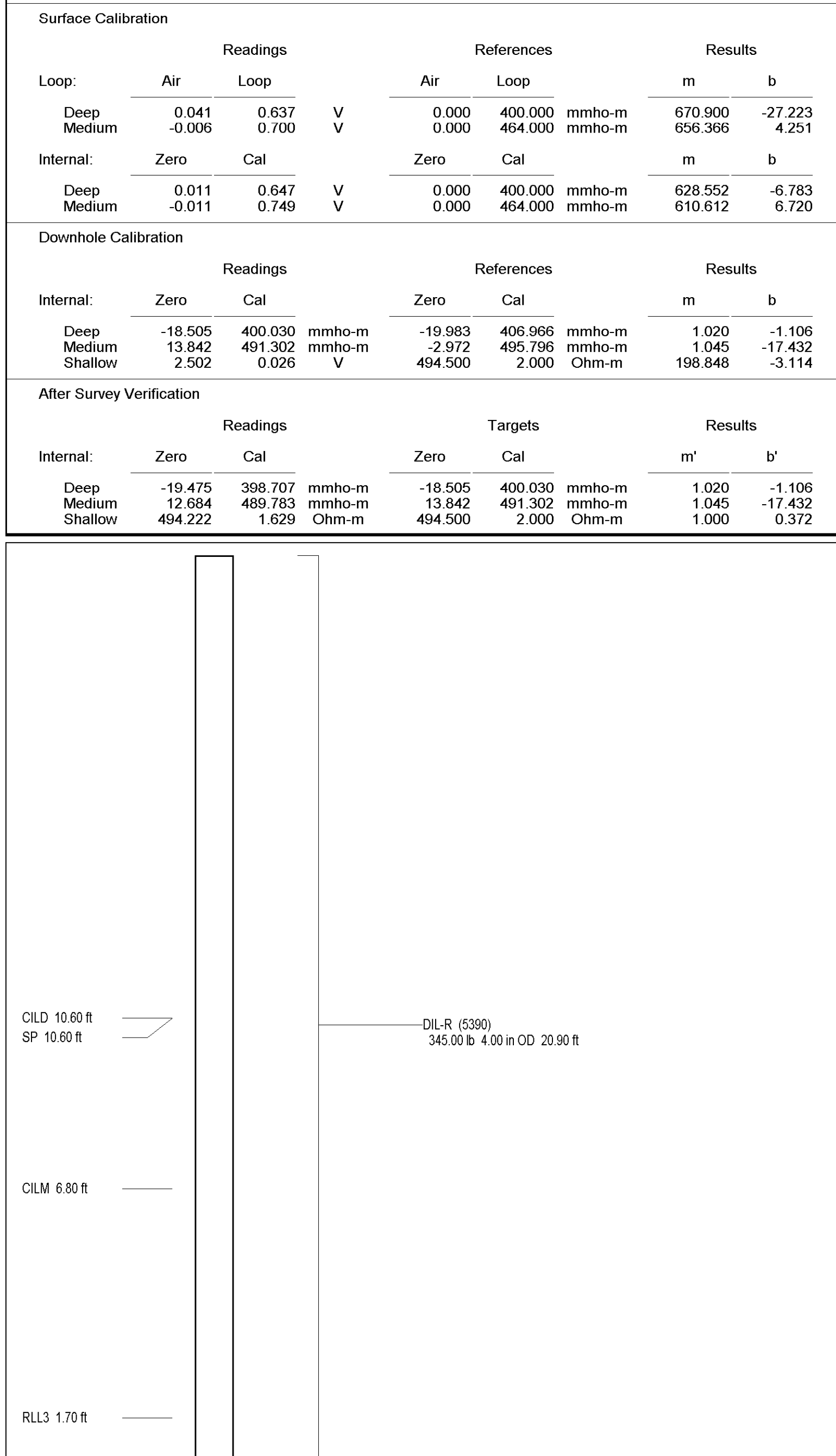
Dual Induction Calibration Report

Serial-Model:	5390-R
Surface Cal Performed:	Mon Feb 24 16:52:46 2003
Downhole Cal Performed:	Sat May 17 13:15:36 2003
After Survey Verification Performed:	Mon May 19 12:01:21 2003

Surface Calibration				References				Results	
Loop:	Air	Loop	V	Air	Loop	m	b		
Deep	0.041	0.637	V	0.000	400.000	mmho-m	670.900	-27.223	
Medium	-0.006	0.700	V	0.000	464.000	mmho-m	656.366	4.251	
Internal:				Zero				Cal	
Deep	0.011	0.647	V	0.000	400.000	mmho-m	628.552	-6.783	
Medium	-0.011	0.749	V	0.000	464.000	mmho-m	610.612	6.720	

Downhole Calibration				References				Results	
Internal:	Zero	Cal	V	Zero	Cal	m	b		
Deep	-18.505	400.030	mmho-m	-19.983	406.966	mmho-m	1.020	-1.106	
Medium	13.684	489.783	mmho-m	-2.972	495.796	mmho-m	1.045	-17.432	
Shallow	2.502	0.026	V	494.500	2.000	Ohm-m	198.848	-3.114	

After Survey Verification				Targets				Results	
Internal:	Zero	Cal	V	Zero	Cal	m'	b'		
Deep	-19.475	398.707	mmho-m	-18.505	400.030	mmho-m	1.020	-1.106	
Medium	12.684	489.783	mmho-m	13.842	491.302	mmho-m	1.045	-17.432	
Shallow	494.222	1.629	Ohm-m	494.500	2.000	Ohm-m	1.000	0.372	



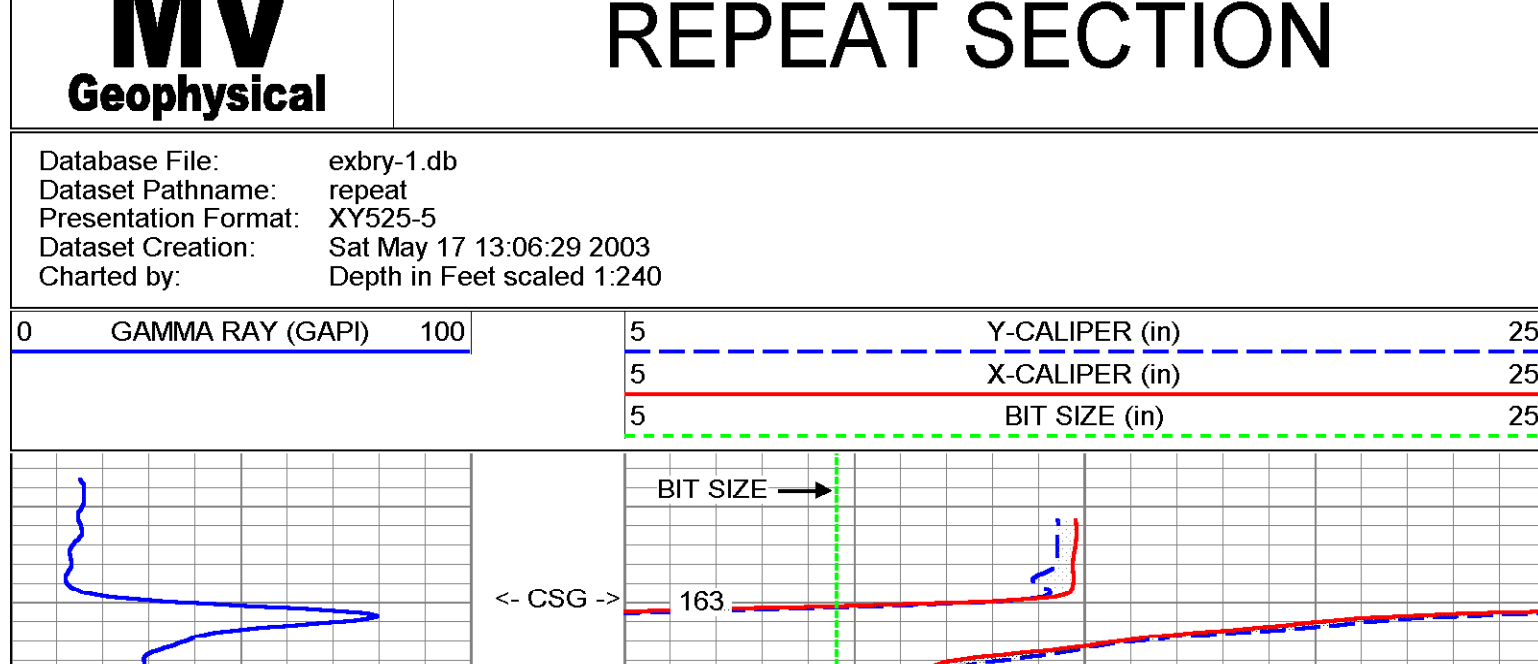
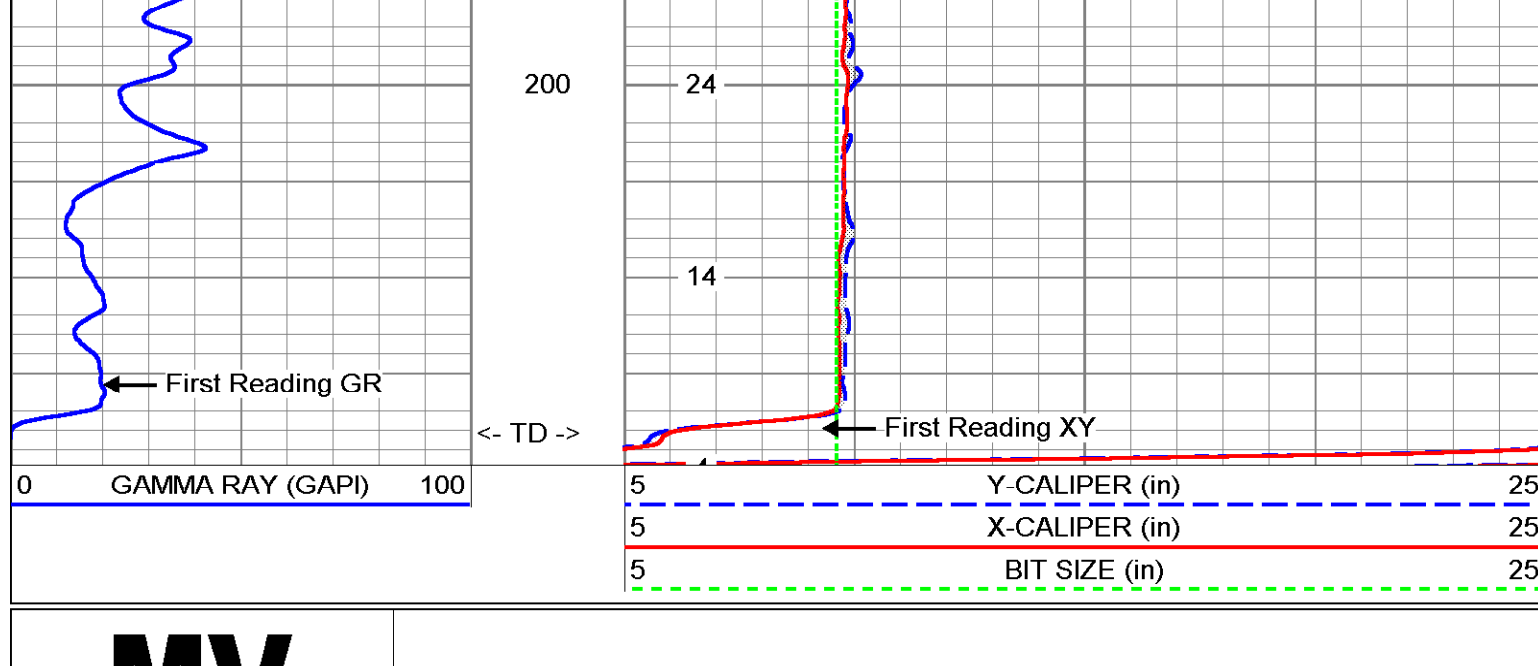
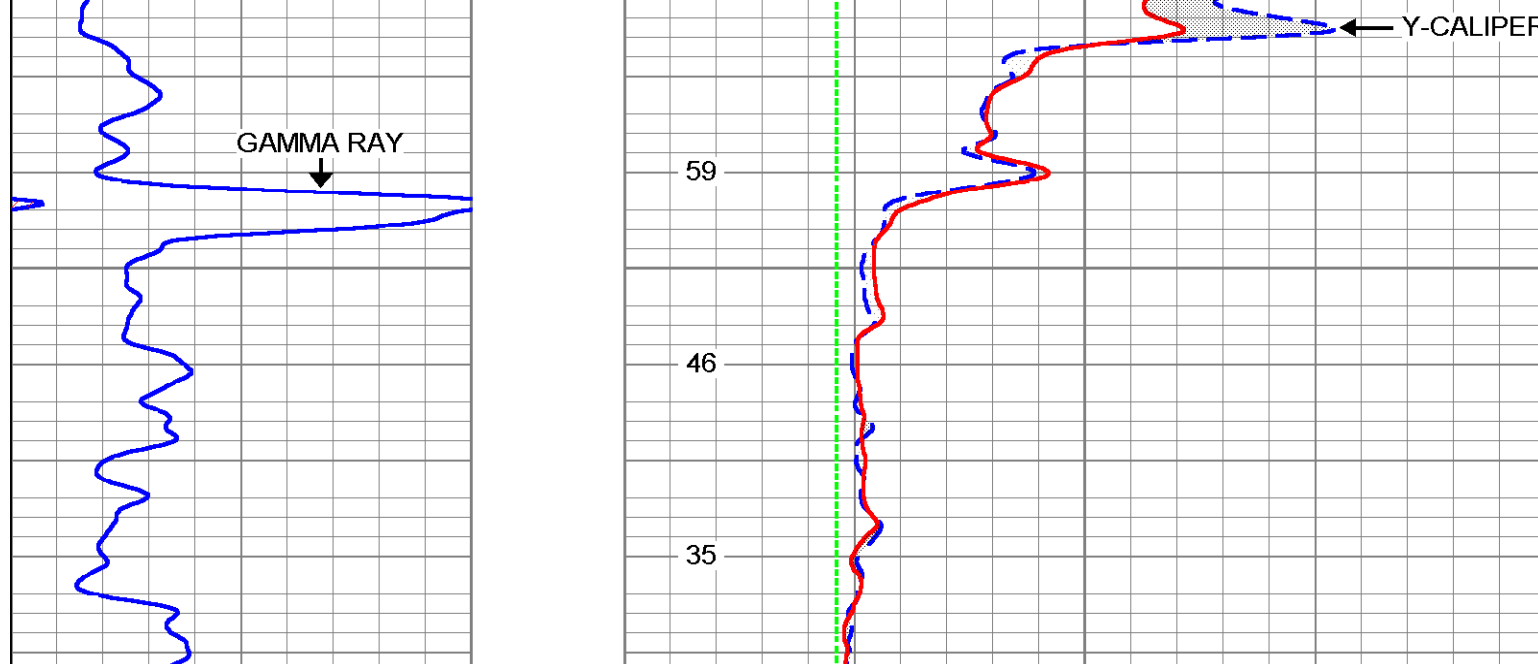
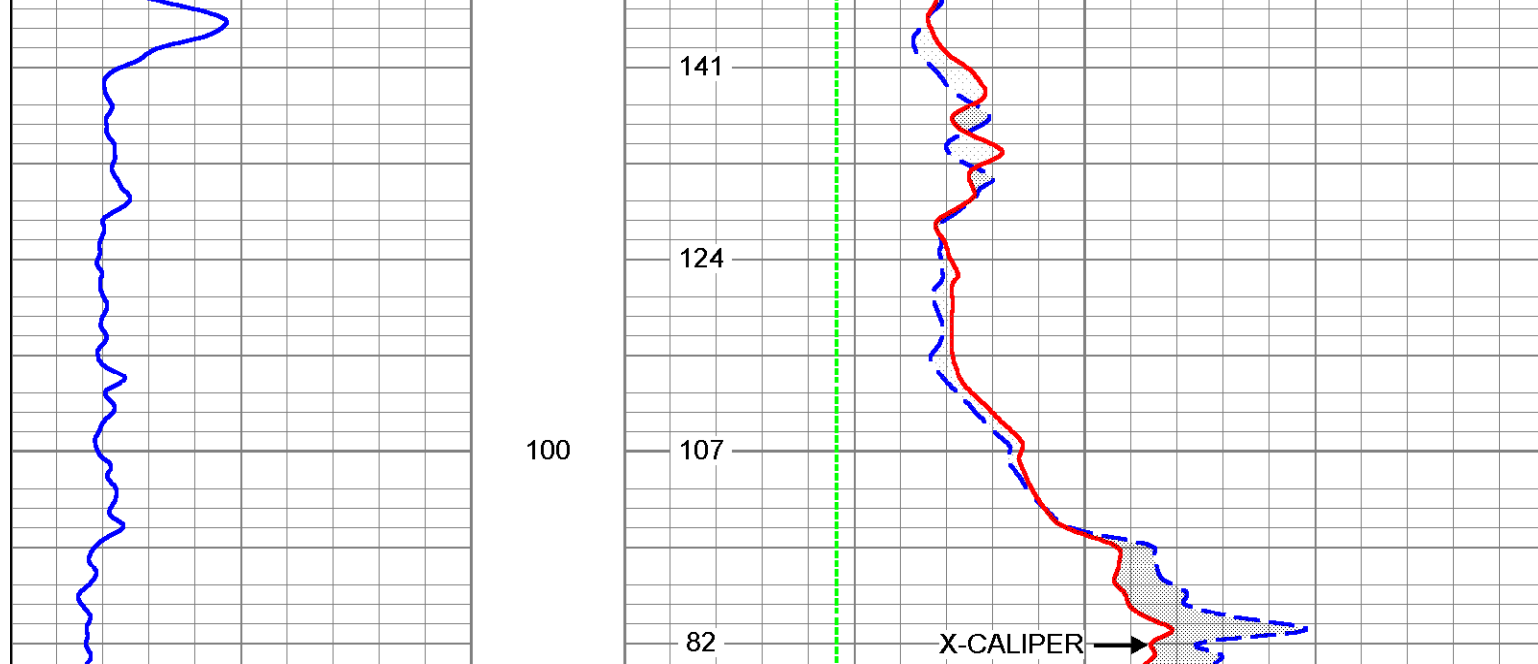
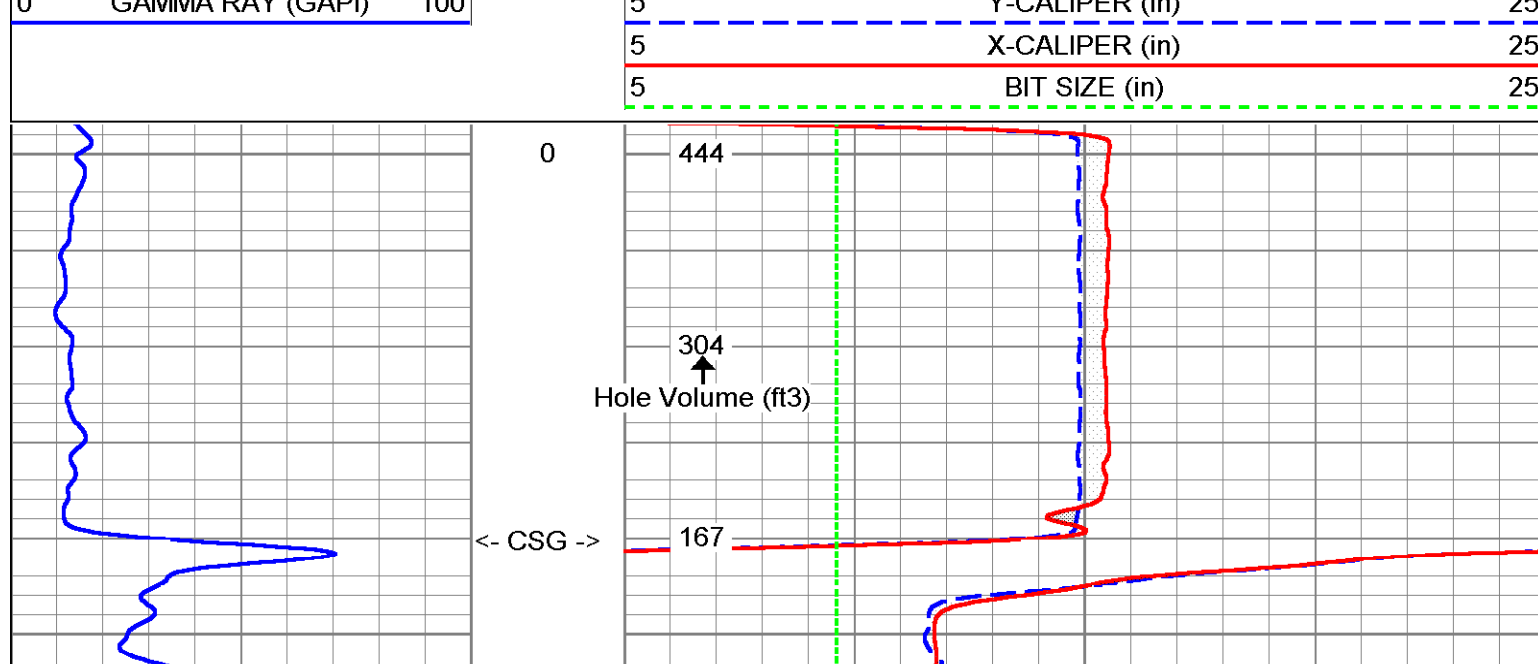
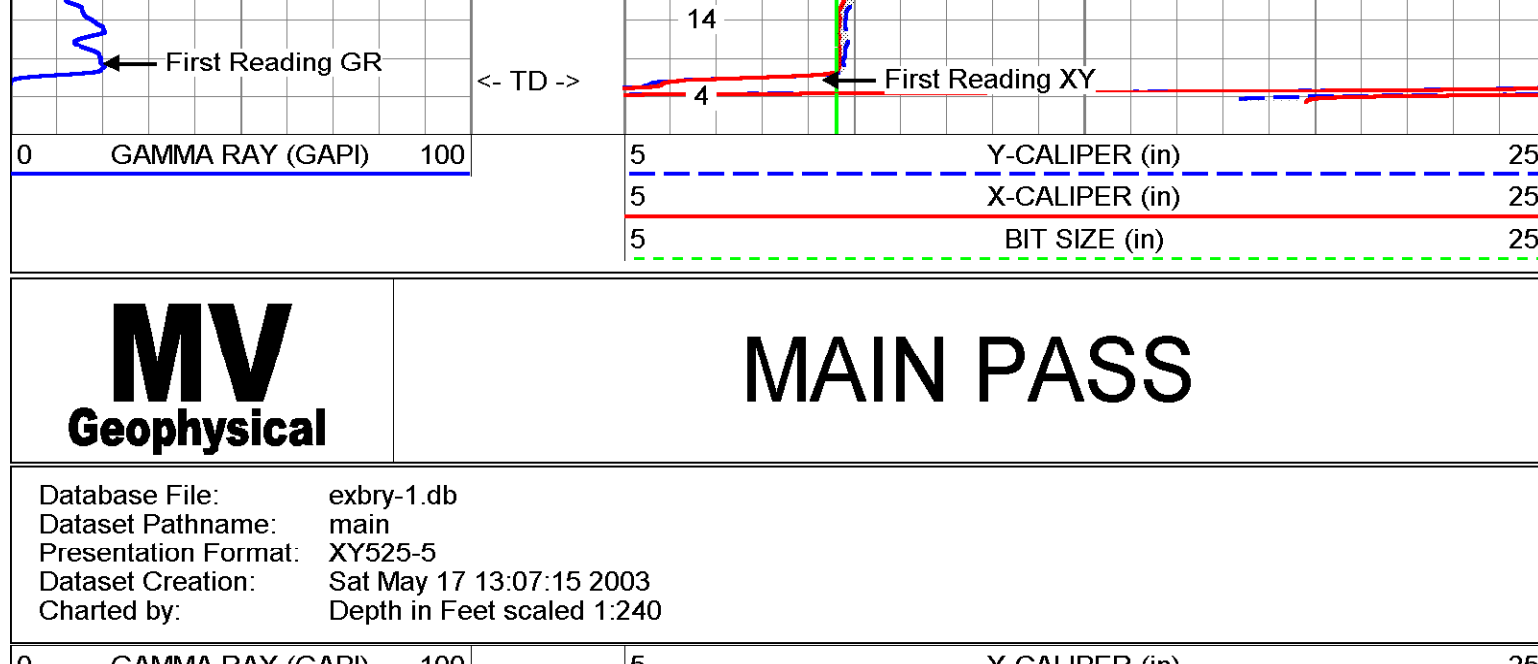
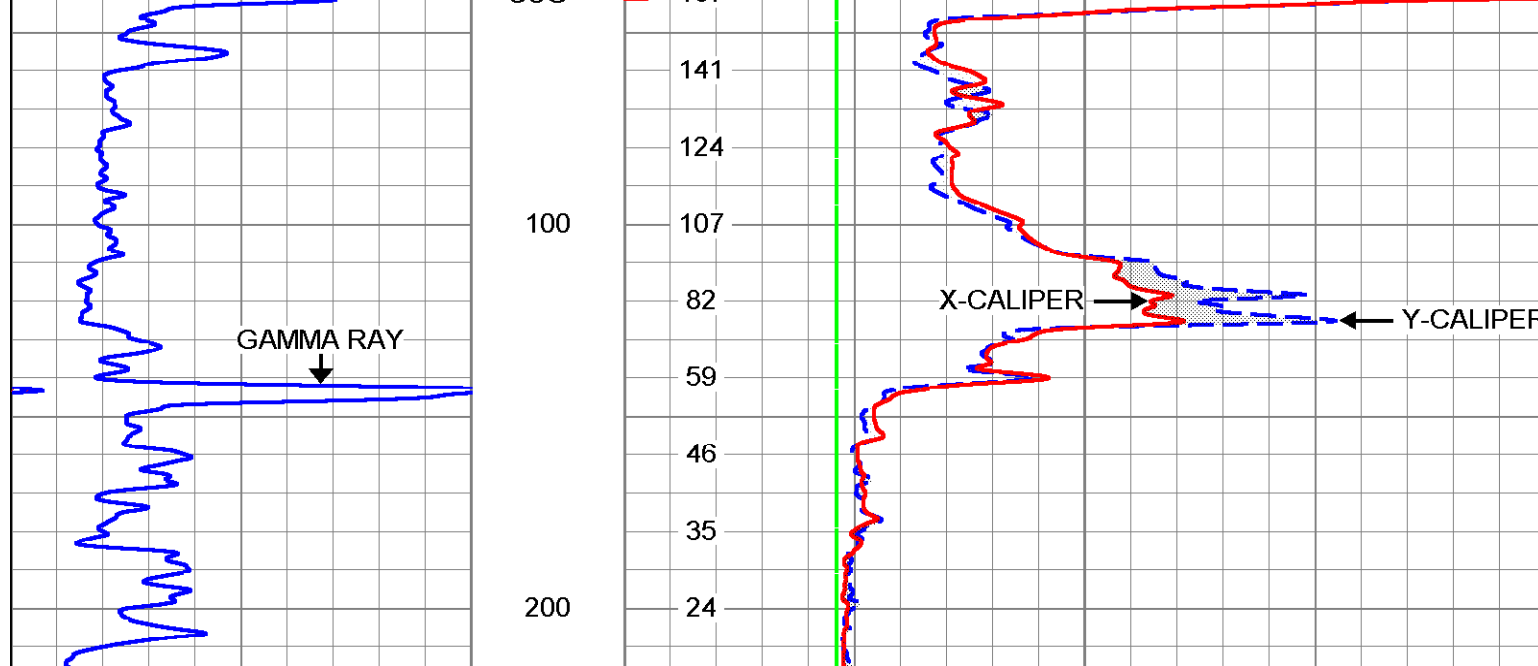
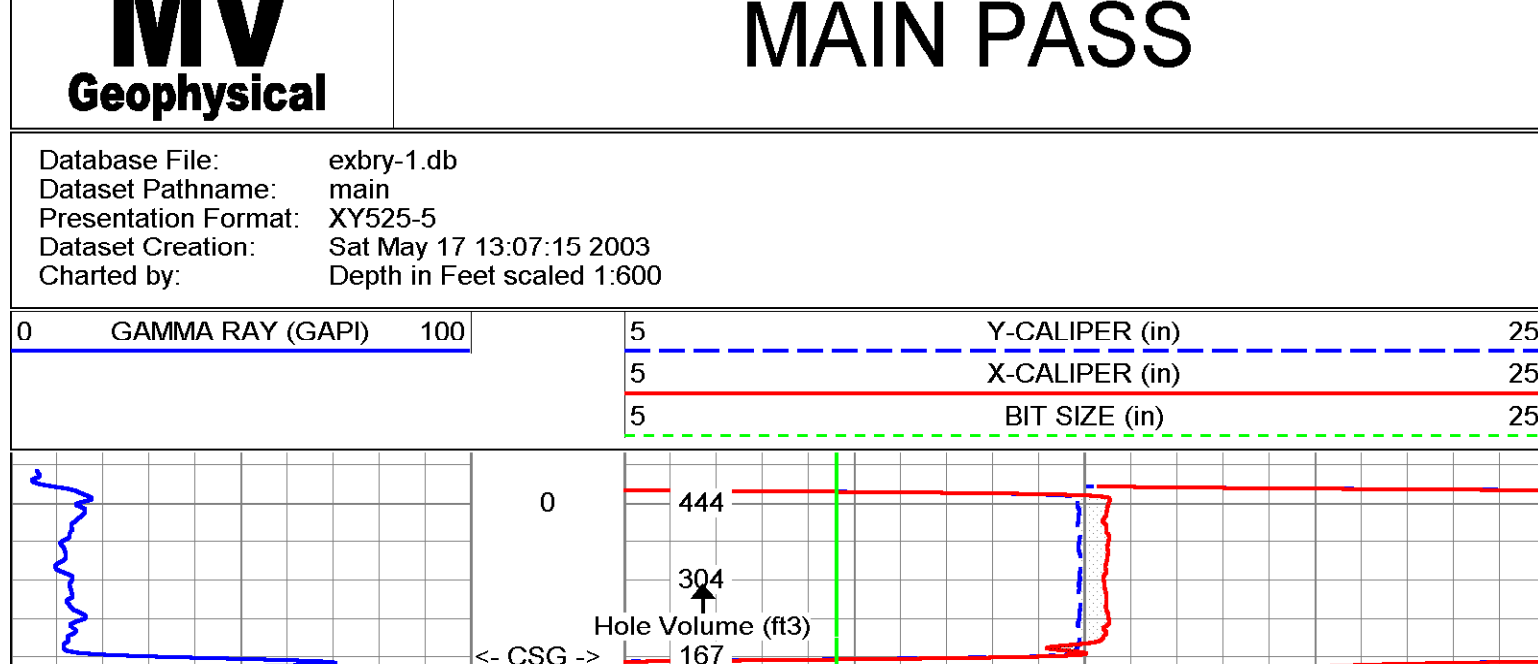
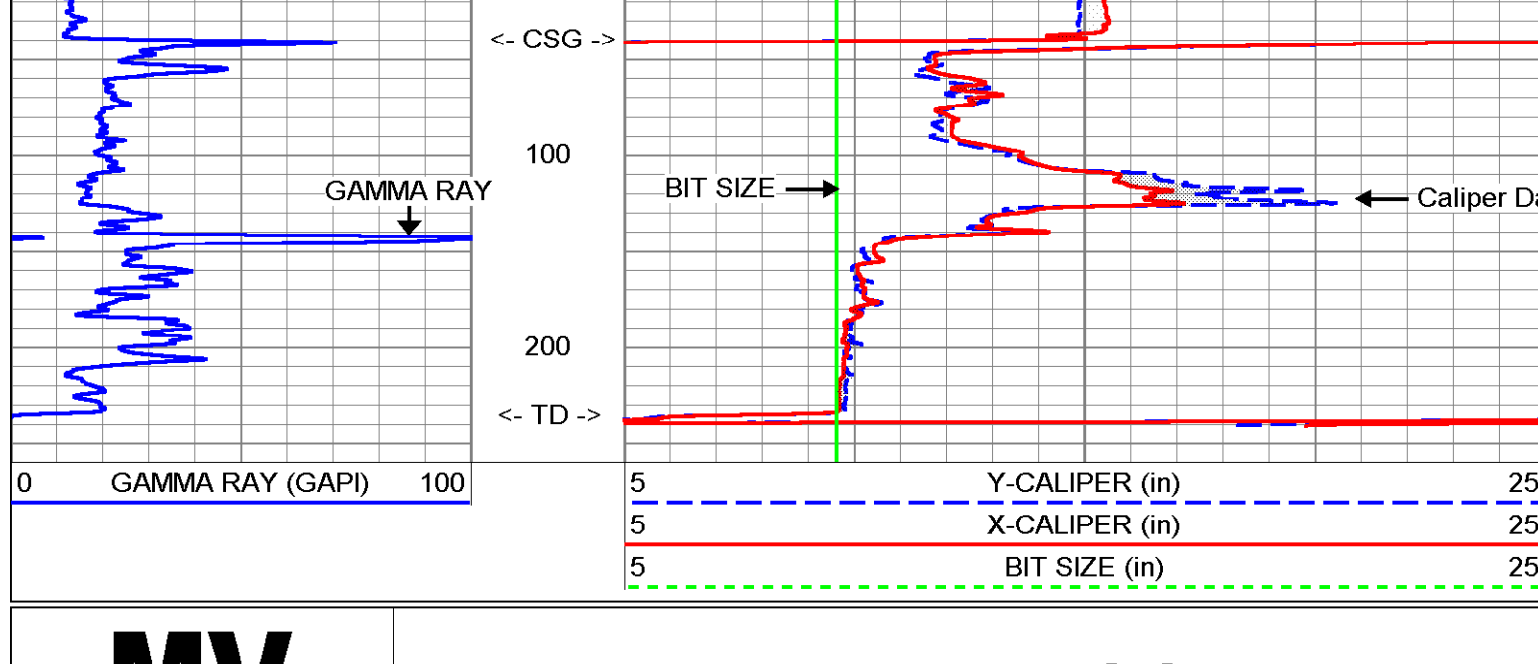
Company	Diversified Drilling Corp.	Well	CRASR-EXBRY-1	Field	Berry Grove	County	Hendry	State/Pvt	Florida
Location	Lat.: 26 41'13.209" N Long.: 81 33'13.710" W	Location	CRASR-EXBRY-1	Field	Berry Grove	County	Hendry	State/Pvt	Florida
Permanent Datum	G.L.	Elevation		Other Services	DIL/SP BH/CMDL				
Log Measured From	G.L.	Elevation							
Drilling Measured From	G.L.	Elevation							
Date	19.MAY.2003	Run Number	ONE	Depth Driller	235'	Bottom Logger	235'	Top Log Interval	235'
Bottom Logged Interval	235'	Bottom Logged Interval	235'	Top Log Interval	235'	Bottom Logged Interval	235'	Top Log Interval	235'
Estimated Cement Top	NA	Time Well Ready	10:00 5/19/03	Time Logger on Bottom	10:30 5/19/03	Equipment Number	M/GS-1	Location	FL Myers
Recorded By	S. Miller	Witnessed By	G. Sussdorf (WRS)	Recorded By	G. Richardson (WRS)	Witnessed By	Backcheck (DDC)	Run Number	ONE
Run Number	ONE	Size	4 1/2"	Weight	235'	From	10'	Bottom	40'
Surface String	2x 1 1/2"	Surface String	2x 1 1/2"	Surface String	2x 1 1/2"	Surface String	2x 1 1/2"	Surface String	2x 1 1/2"
Production String	2x 1 1/2"	Production String	2x 1 1/2"	Production String	2x 1 1/2"	Production String	2x 1 1/2"	Production String	2x 1 1/2"
Case Record	2003126	Case Record	2003126	Case Record	2003126	Case Record	2003126	Case Record	2003126

<<< Fold Here >>>

All interpretations are opinions based on inferences from electrical or other measurements and we cannot and do not guarantee the accuracy or correctness of any interpretation, and we shall not, except in the case of gross or willful negligence on our part, be liable or responsible for any loss, costs, damages, or expenses incurred or sustained by anyone resulting from any interpretation made by any of our officers, agents or employees. These interpretations are also subject to our general terms and conditions set out in our current Price Schedule.

Comments

X-Y Caliper Arm Extensions: 35"

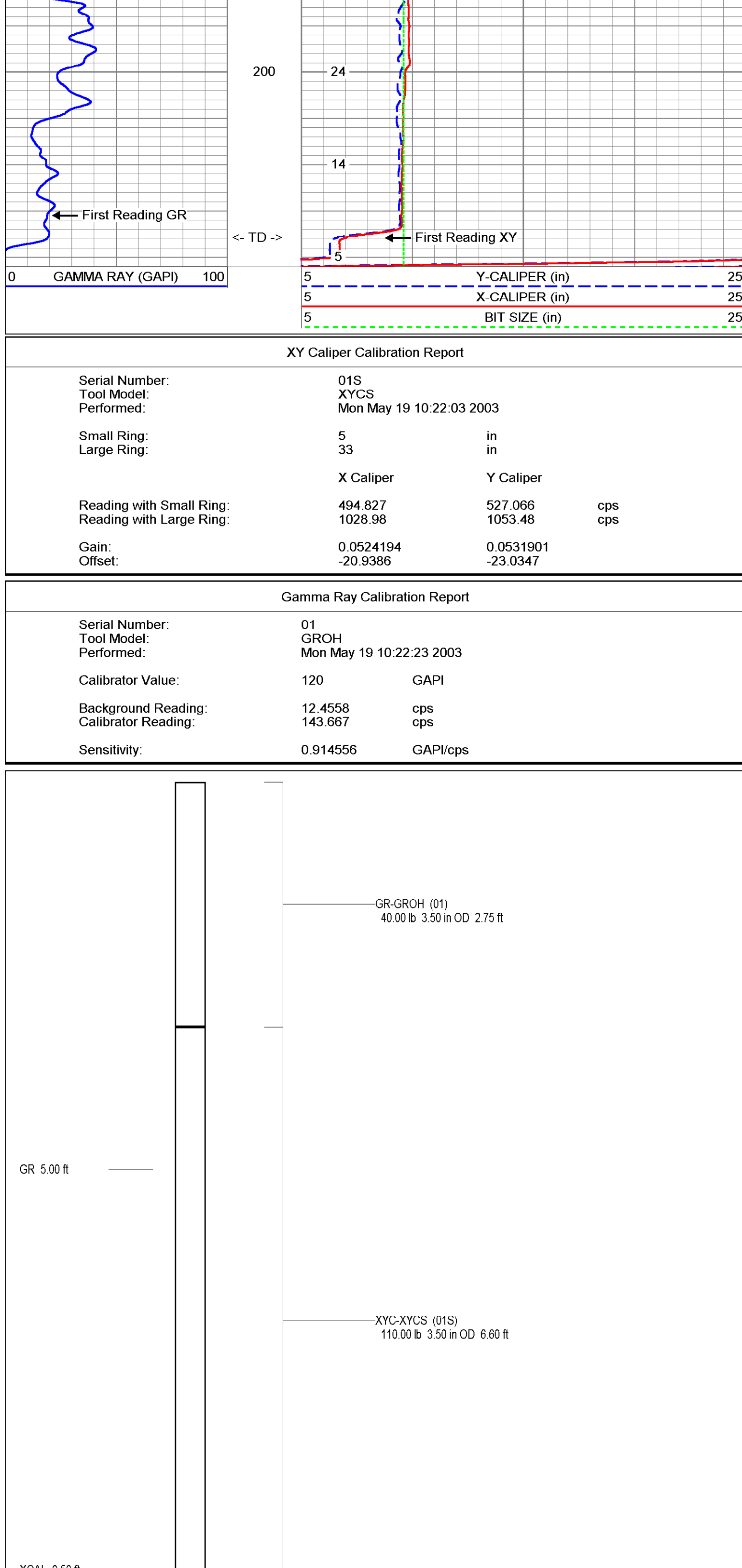


XY Caliper Calibration Report

Tool Number:	01S	XYCS	Performed:	Mon May 19 10:22:03 2003
Small Ring:	5	in		
Large Ring:	33	in		
Reading with Small Ring:	494.827		Y Caliper	527.066
Reading with Large Ring:	1028.98		X Caliper	1053.48
Gain:	0.0524194			cps
Offset:	-20.9386			cps

Gamma Ray Calibration Report

Serial Number:	01	GROH	Performed:	Mon May 19 10:22:23 2003
Tool Model:				
Calibrator Value:	120	GAPI		
Background Reading:	12.4558	cps		
Calibrator Reading:	143.667	cps		
Sensitivity:	0.914556	GAPI/cps		





X-Y CALIPER
GAMMA RAY
LOG

Company Diversified Drilling Corp.		Company Diversified Drilling Corporation	
Well CRASR-EXBRY-1	Field Berry Grove	Well CRASR-EXBRY-1	Field Berry Grove
County Hendry	State/Prv Florida	County Hendry	State/Prv Florida
Date	28-MAY-2003	Location	Lat.: 26 41'13.209" N Long.: 81 33'13.710" W
Run Number	28-MAY-2003	Permanent Datum	G.L.
Depth Driller	225'	Log Measured From	G.L.
Depth Logger	234'	Drilling Measured From	G.L.
Bottom Logged Interval	232'	Elevation	NONE
Top Log Interval	SURFACE	Other Services	
Open Hole Size	3 3/8"	KB	
Type Fluid	MUD	DF	
Density / Viscosity	NA/NA	Elevation	
Max. Recorded Temp.	NA		
Estimated Cement Top	NA		
Time Well Ready	09:00 5/28/03		
Time Logger on Bottom	09:00 5/28/03		
Equipment Number	MN/CS-1		
Location	FI Millers		
Recorded By	S. Miller		
Witnessed By	G. Susdorf (WRS)		
Run Number	9.625"	Size	40"
ONE	40"	Weight	225'
TVIS	39"	From	
		To	
Casing Record	Size	Weight	From
Production String	42"	30' logger	
Production String	0.375" WT		
Line	2003133		

<<< Fold Here >>>

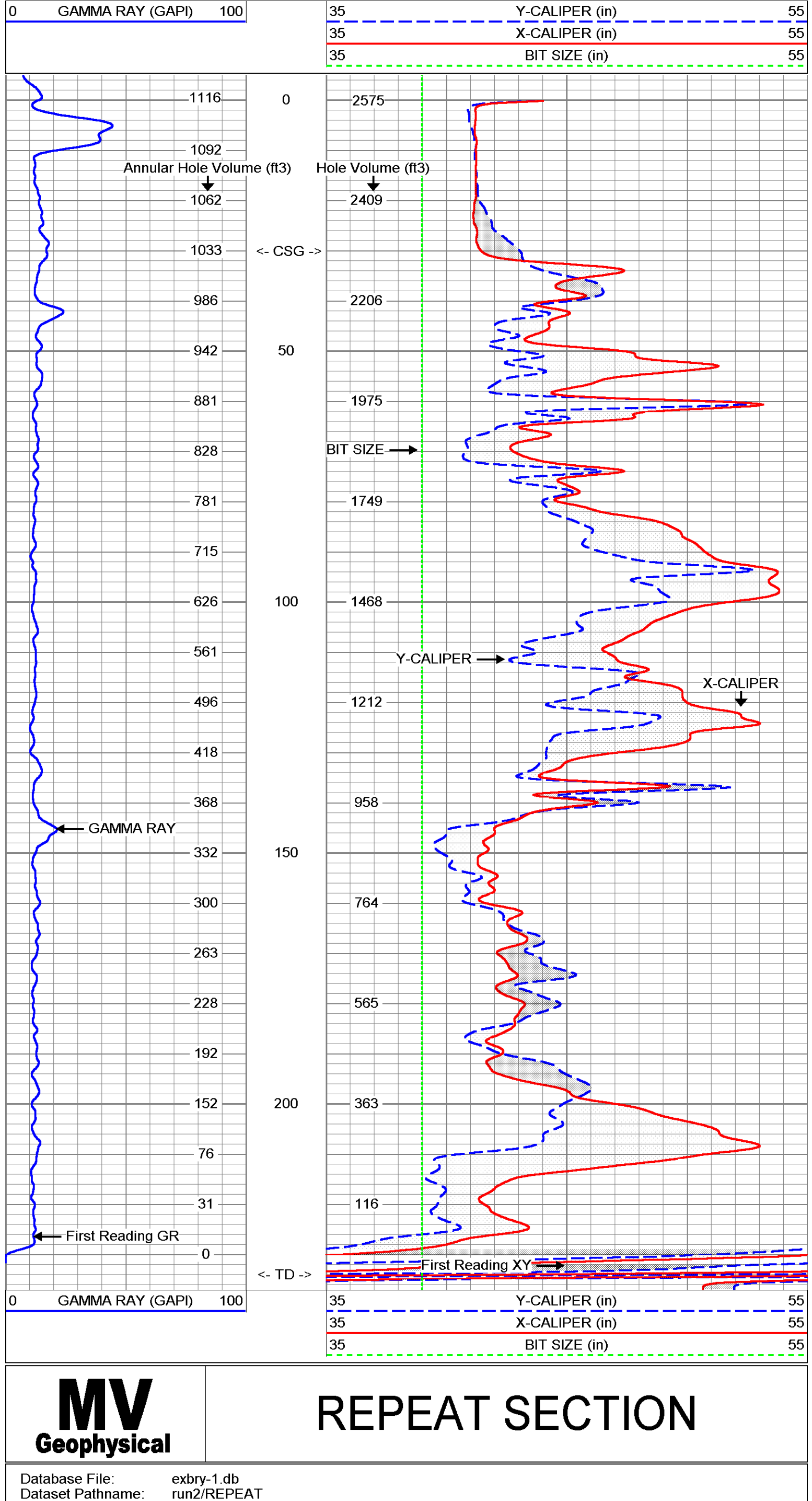
All interpretations are opinions based on inferences from electrical or other measurements and we cannot and do not guarantee the accuracy or correctness of any interpretation, and we shall not, except in the case of gross or willful negligence on our part, be liable or responsible for any loss, costs, damages, or expenses incurred or sustained by anyone resulting from any interpretation made by any of our officers, agents or employees. These interpretations are also subject to our general terms and conditions set out in our current Price Schedule.

Comments

X-Y Caliper Arm Extensions: 57"
FUTURE CASING SIZE: 34"

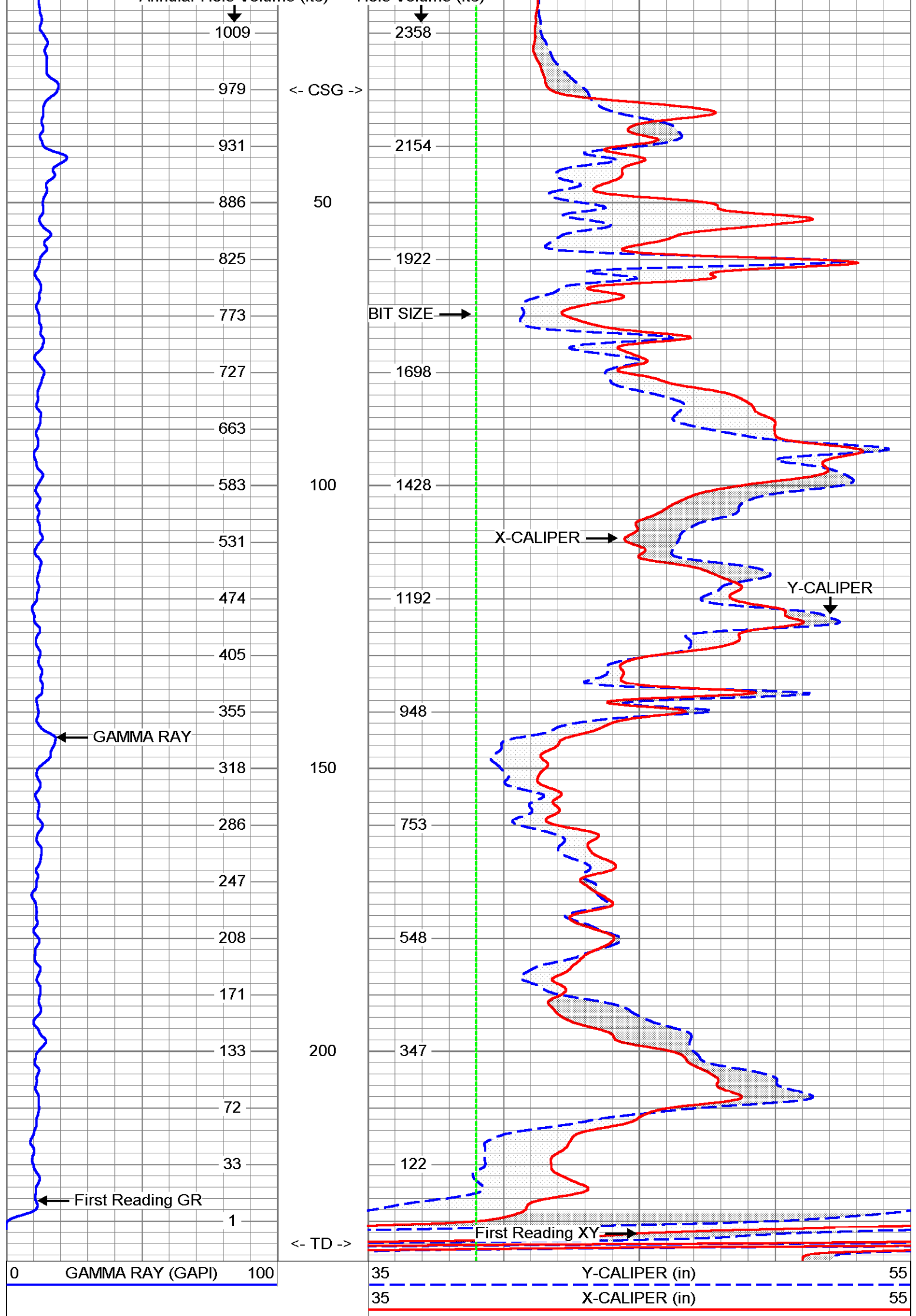
MAIN PASS

Database File: exbry-1.db
Dataset Pathname: run2/main
Presentation Format: XY3555-5
Dataset Creation: Wed May 28 09:40:07 2003
Charted by: Depth in Feet scaled 1:240



REPEAT SECTION

Database File: exbry-1.REPEAT
Dataset Pathname: run2/REPEAT
Presentation Format: XY3555-5
Dataset Creation: Wed May 28 09:24:17 2003
Charted by: Depth in Feet scaled 1:240

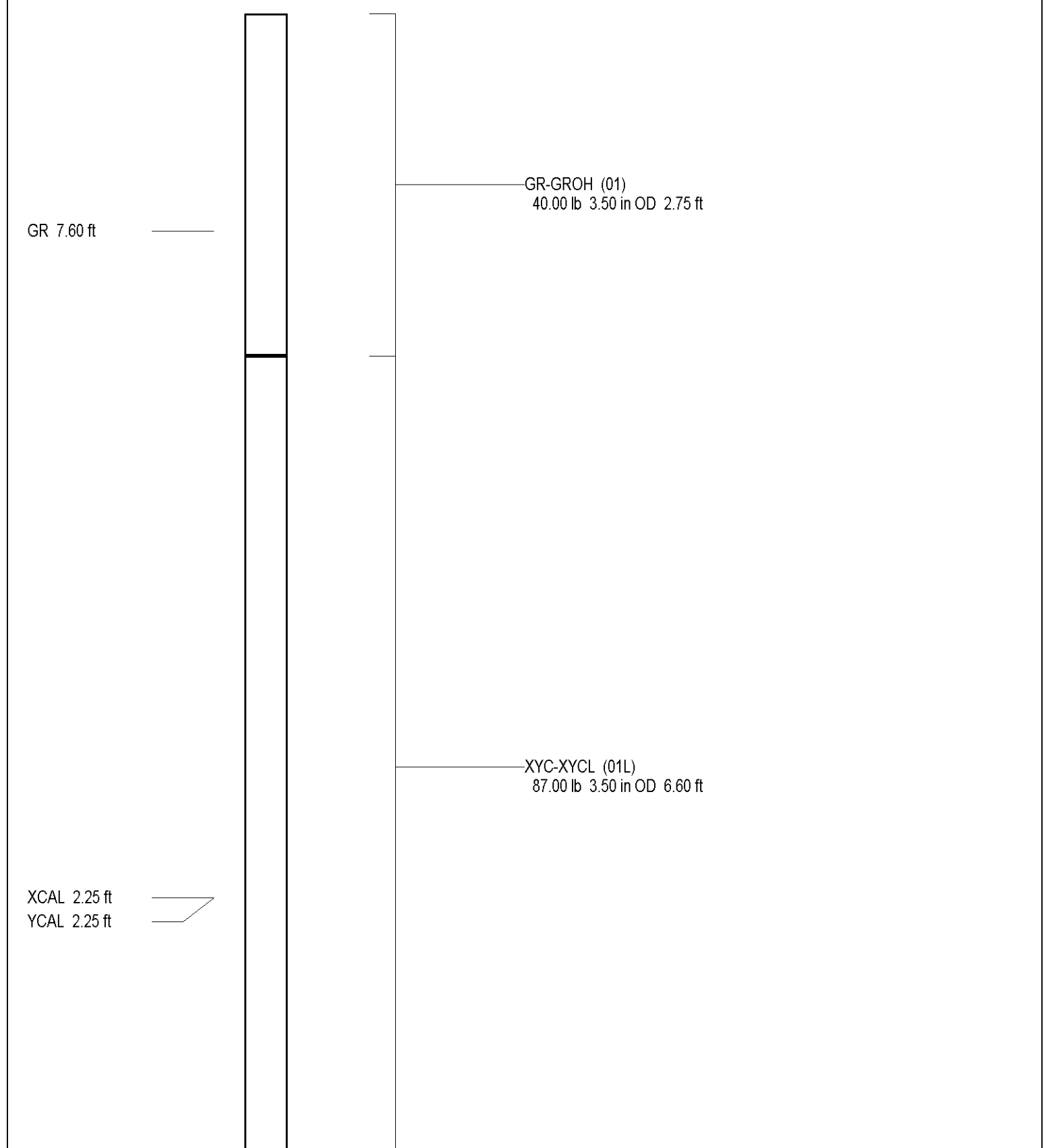


XY Caliper Calibration Report

Serial Number:	01L		
Tool Model:	XYCL		
Performed:	Wed May 28 08:49:59 2003		
Small Ring:	15.25	in	
Large Ring:	57	in	
Reading with Small Ring:	593.353	X Caliper	582.44
Reading with Large Ring:	1042.56	Y Caliper	1038.79
Gain:	0.0929417		cps
Offset:	-39.8972		cps

Gamma Ray Calibration Report

Serial Number:	01		
Tool Model:	GROH		
Performed:	Wed May 28 08:47:50 2003		
Calibrator Value:	120	GAPI	
Background Reading:	10.456	cps	
Calibrator Reading:	153.668	cps	
Sensitivity:	0.837919	GAPI/cps	





**X-Y CALIPER
GAMMA RAY
LOG**

Company	Diversified Drilling Corp.	Company	Diversified Drilling Corporation
Well	CRASR-EXBRY-1	Well	CRASR-EXBRY-1
Field	Berry Grove	Field	Berry Grove
County	Hendry	County	Hendry
State/Prv	Florida	State/Prv	Florida
Location		Location	Lat.: 26 41' 13.209" N Long.: 81 33' 13.710" W SFWMD / WRS
Permanet Datum	G.L.	Elevation	G.L.
Log Measured From	G.L.	K.B.	G.L.
Drilling Measured From	G.L.	D.F.	G.L.
Date	30-MAY-2003	Run Number	THREEE
Depth Driller	225'	Depth Logger	237'
Bottom Logged Interval	235'	Top Log Interval	SURFACE
Open Hole Size	3 3/8"	Type Fluid	MUD
Density / Viscosity	NA/NA	Max. Recorded Temp.	NA
Estimated Cement Top	NA	Time Well Ready	10:00 5/30/03
Time Logger on Bottom	10:00 5/30/03	Equipment Number	MGSS-1
Location	FL Myers	Recorded By	G. Richardson (WRS)
Witnessed By	G. Susdorf (WRS)	Recorded By	G. Richardson (WRS)
Run Number	9 625"	Bit	40"
TVI/O	39"	Size	40"
Casing Record	42"	Weight	225'
Production String	0.375" VIT	Top SURFACE	30" logger
Liner	2x 1 1/2"	Bottom SURFACE	40"
	200303138		

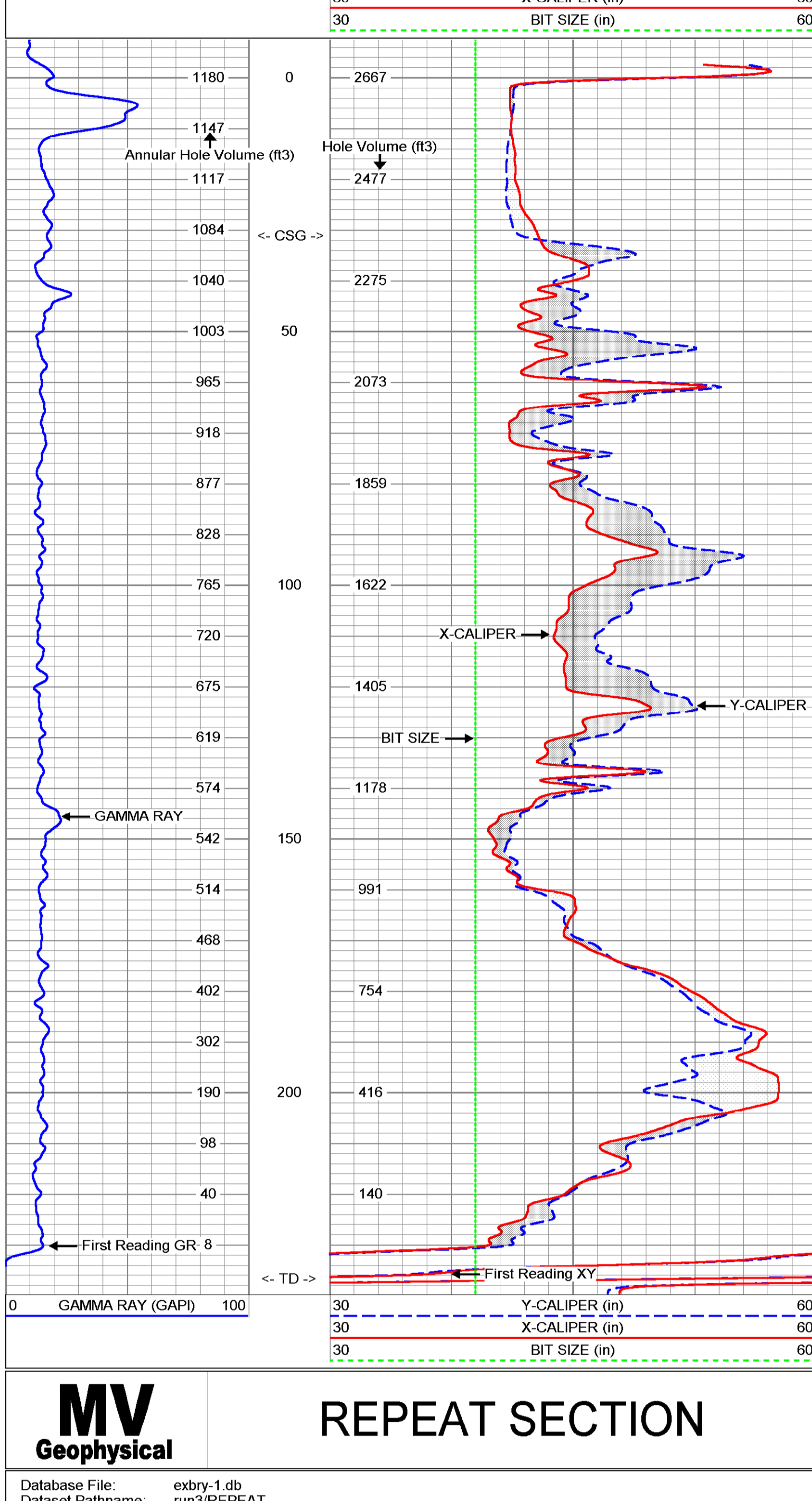
<<< Fold Here >>>
All interpretations are opinions based on inferences from electrical or other measurements and we cannot and do not guarantee the accuracy or correctness of any interpretation, and we shall not, except in the case of gross or willful negligence on our part, be liable or responsible for any loss, costs, damages, or expenses incurred or sustained by anyone resulting from any interpretation made by any of our officers, agents or employees. These interpretations are also subject to our general terms and conditions set out in our current Price Schedule.

Comments

X-Y Caliper Arm Extensions: 57"
FUTURE CASING SIZE: 34"

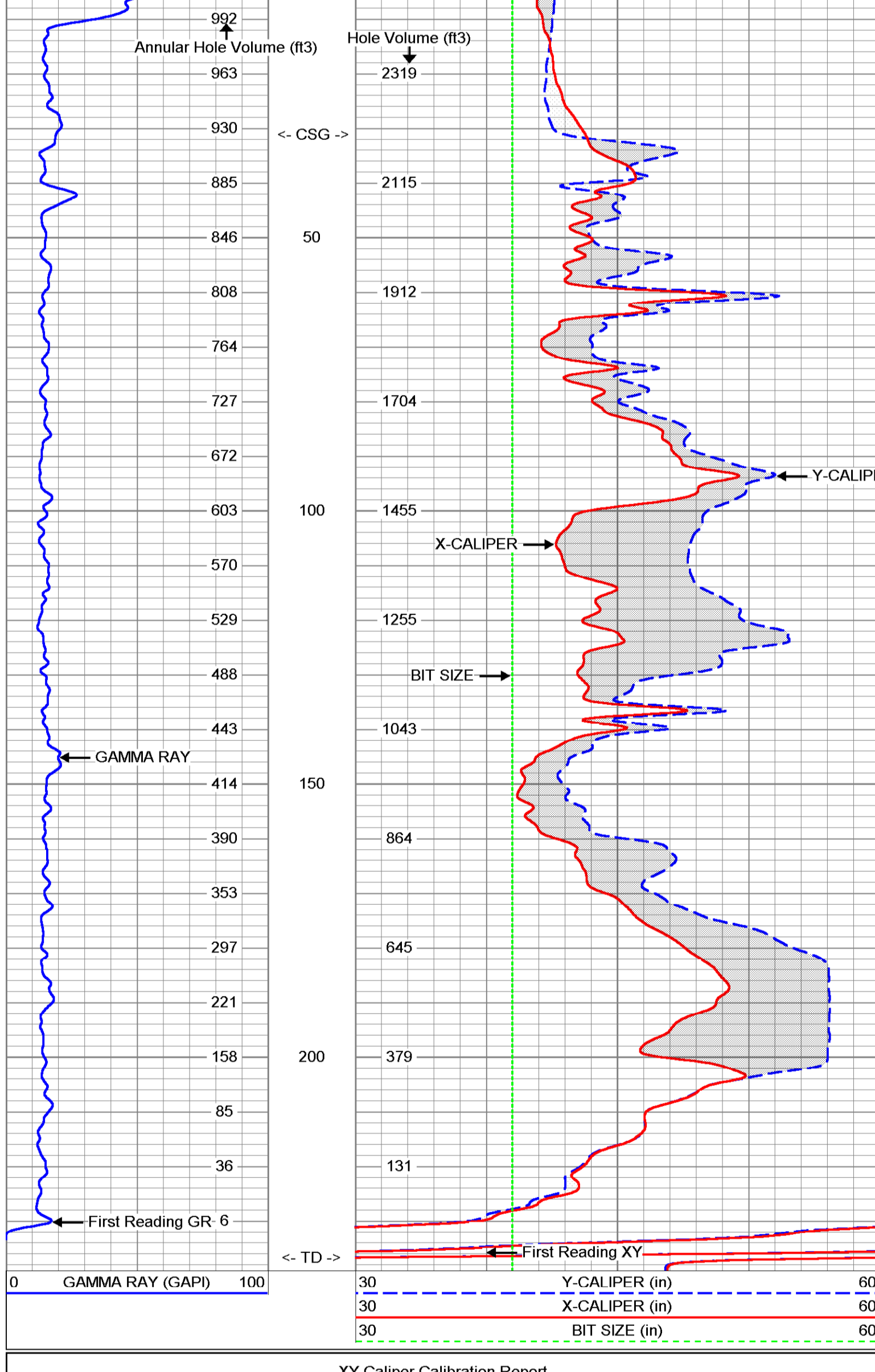
MAIN PASS

Database File: exbry-1.db
Dataset Pathname: run3/main
Presentation Format: XY3060-5
Dataset Creation: Fri May 30 10:53:57 2003
Charted by: Depth in Feet scaled 1:240



REPEAT SECTION

Database File: exbry-1.db
Dataset Pathname: run3/REPEAT
Presentation Format: XY3060-5
Dataset Creation: Fri May 30 10:49:33 2003
Charted by: Depth in Feet scaled 1:240

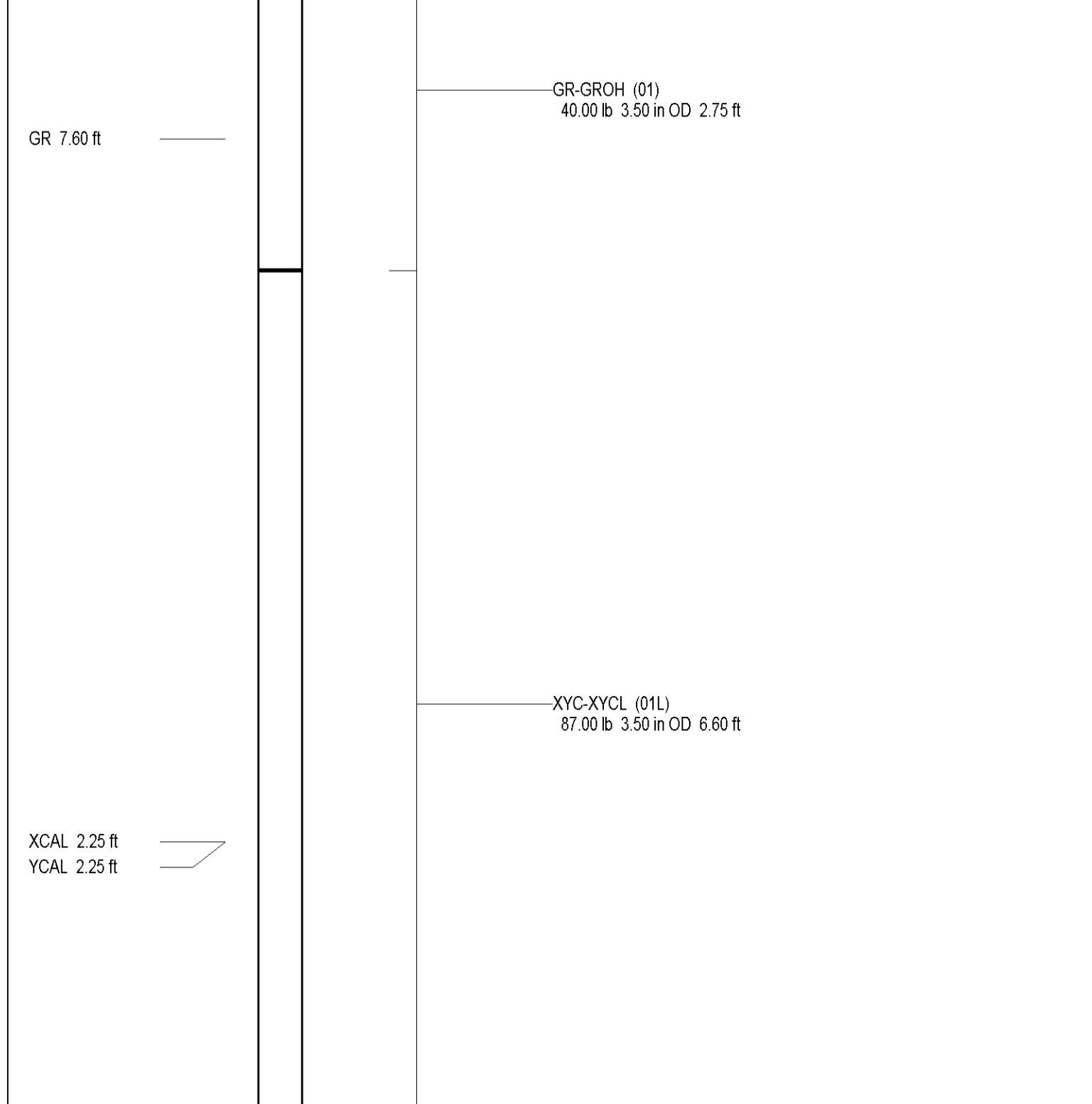


XY Caliper Calibration Report

Serial Number:	01L		
Tool Model:	XYCL		
Performed:	Fri May 30 10:12:42 2003		
Small Ring:	41.25	in	
Large Ring:	57	in	
Reading with Small Ring:	882.835	888.44	cps
Reading with Large Ring:	1049.56	1054.79	cps
Gain:	0.0944671	0.0946799	
Offset:	-42.1489	-42.8674	

Gamma Ray Calibration Report

Serial Number:	01		
Tool Model:	GRH		
Performed:	Thu May 29 14:45:54 2003		
Calibrator Value:	120	GAPI	
Background Reading:	10.456	cps	
Calibrator Reading:	153.668	cps	
Sensitivity:	1.025	GAPI/cps	



Dataset: run3/pass2.1
Total Length: 9.35 ft
Total Weight: 127.00 lb
O.D.: 3.50 in

Company	Diversified Drilling Corp.	Company	Diversified Drilling Corporation
Well	CRASR-EXBRY-1	Well	CRASR-EXBRY-1
Field	Berry Grove	Field	Berry Grove
County	Hendry	County	Hendry
State/Prv	Florida	State/Prv	Florida
Location	Lat.: 26 41'3.209" N Long.: 81 33'13.710" W SFWMD / WRS	Location	VIDEO
Permanent Datum	G.L.	Elevation	
Log Measured From	G.L.	KB	
Drilling Measured From	G.L.	RT	
Date	10-FEB-2004	Q.L.	
Run Number	SIX		
Depth Driller	634'		
Depth Logger	624'		
Bottom Logged Interval	624'		
Open Hole Size	SIRFACE		
Type Fluid	WATER		
Denisty / Viscosity	N/A/N/A		
Max. Recorded Temp.	83 degF		
Estimated Cement Top	287'		
Time Well Ready	11:00 2/10/04		
Equipment Number	11:00 2/10/04		
Location	MVGS-1		
Recorded By	Fl Myers		
Witnessed By	S.Miller		
Witnessed By	G.Sussort (WRS)		
Witnessed By	S.Underwood (DDC)		
Run Number	ONE	Bit	From
ONE	9 625"	40"	235'
TWO	39"	40"	225'
THREE	9 625"	240"	555'
FOUR	7 875"	555'	1073'
Casing Record	Size	Weight	From
Surface String	4 1/2"	33"	240'
Prod. String	3 1/2"	22.5"	634'
Production String	2 1/2"	634'	634'
Liner	2003222		

<<< Fold Here >>>

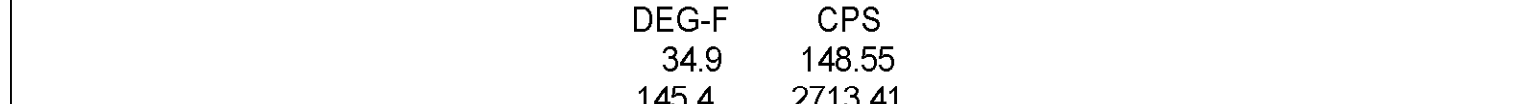
All interpretations are opinions based on inferences from electrical or other measurements and we cannot and do not guarantee the accuracy or correctness of any interpretation, and we shall not, except in the case of gross or willful negligence on our part, be liable or responsible for any loss, costs, damages, or expenses incurred or sustained by anyone resulting from any interpretation made by any of our officers, agents or employees. These interpretations are also subject to our general terms and conditions set out in our current Price Schedule.

Comments

ESTIMATED CEMENT TOPS
Stage Logger Driller (tag)
#1 287' 303'

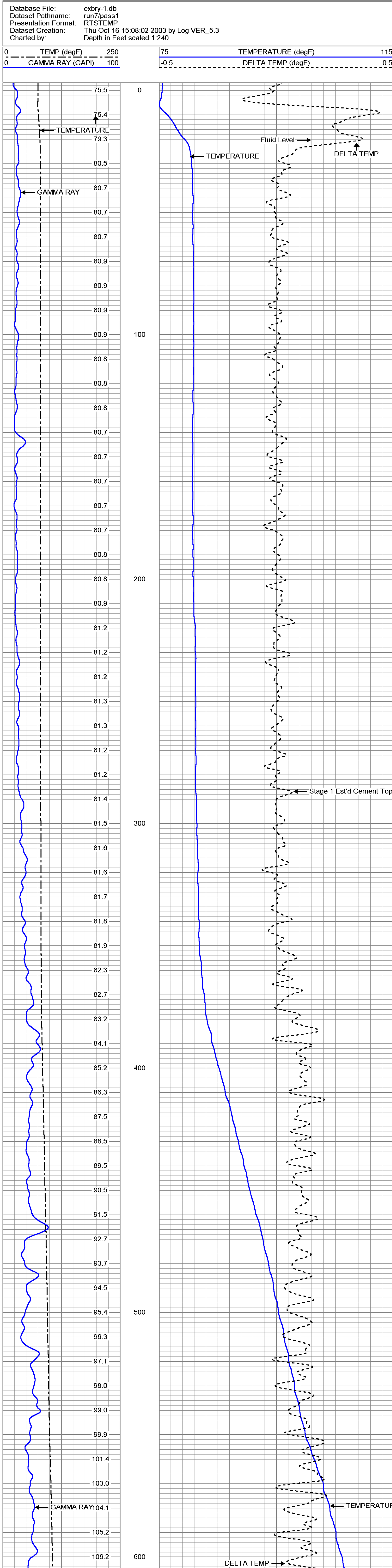
TEMPERATURE CALIBRATION REPORT
(performed: 15-OCT-2003 17:15)

DEG-F CPS
34.9 148.55
145.4 2713.41



Stage 1 Est'd Top: 287'

Database File: exbry-1.db
Dataset Pathname: run7/pass1
Presentation Format: RTSTEMP
Dataset Creation: Thu Oct 16 15:08:02 2003 by Log VER_5.3
Charted by: Depth in Feet scaled 1:240



Gamma Ray Calibration Report

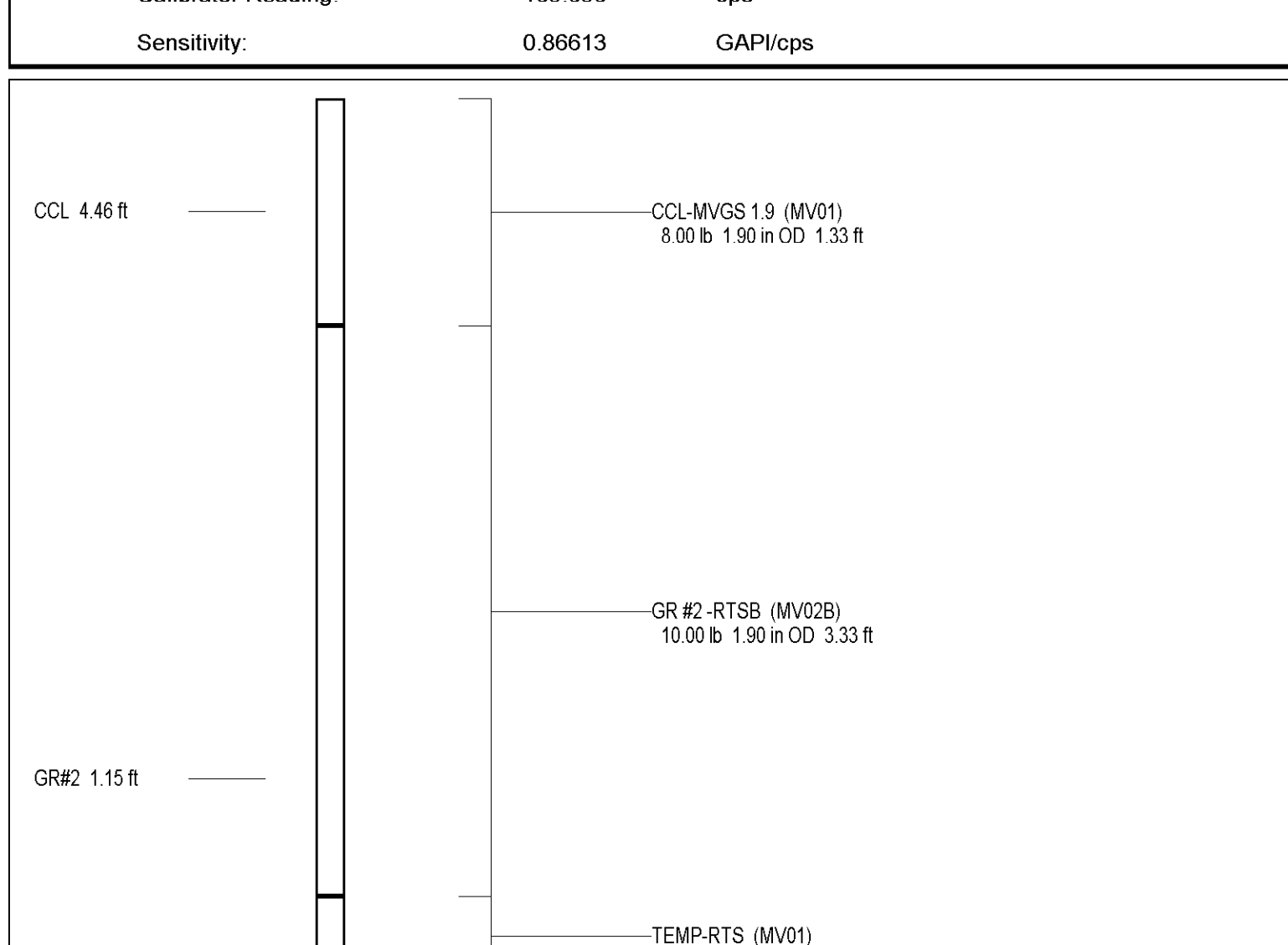
Serial Number: MV02B
Tool Model: RTSB
Performed: Thu Oct 16 15:08:41 2003

Calibrator Value: 120 GAPI

Background Reading: 27.1486 cps

Calibrator Reading: 165.696 cps

Sensitivity: 0.86613 GAPI/cps



Dataset: run7/pass1
Total Length: 5.12 ft
Total Weight: 20.00 lb
O.D.: 1.90 in



**FLUID RESISTIVITY
TEMPERATURE
LOG**

Company Diversified Drilling Corp.		Diversified Drilling Corporation	
Well CRASR-EXBRY-1		CRASR-EXBRY-1	
Field Berry Grove		Berry Grove	
County Hendry		Hendry	
State/Prv Florida		State/Prv Florida	
Location		Lat.: 26 41'13.209" N Long.: 81 33'13.710" W SFWMD / WRS	
Permanent Datum		G.L.	
Log Measured From		G.L.	
Drilling Measured From		G.L.	
Date		10-FEB-2004	
Run Number		SIX	
Depth Driller		740'	
Depth Logger		677'	
Bottom Logged Interval		677'	
Top Log Interval		543'	
Open Hole Size		22.5"	
Type Fluid		WATER	
Density / Viscosity		NANA	
Max. Recorded Temp.		83 degF	
Estimated Cement Top		287'	
Time Well Ready		11:00 2/10/04	
Time Logger on Bottom		11:30 2/10/04	
Equipment Number		MV/GS-1	
Location		Ft Myers	
Recorded By		S. Miller	
Witnessed By		G. Susdorf (WRS)	
Borehole Record		S. Underwood (DDC)	
Run Number		ONE	
Bit		9.625"	
From		40'	
To		225'	
Size		FIVE	
Weight		33"	
From		240'	
To		640'	
Run Number		TWO	
Bit		39"	
From		40'	
To		225'	
Size		SIX	
Weight		33"	
From		634'	
To		740'	
Run Number		THREE	
Bit		9.625"	
From		240'	
To		555'	
Size		FOUR	
Weight		33"	
From		634'	
To		740'	
Run Number		FOUR	
Bit		7.875"	
From		555'	
To		1073'	
Size		WATER	
Weight		33"	
From		40'	
To		240'	
Run Number		SURFACE STRING	
Bit		42"	
From		0.375' WT	
To		40'	
Run Number		PROT. STRING	
Bit		34"	
From		0.500' WT	
To		240'	
Run Number		PRODUCTION STRING	
Bit		24"	
From		0.375' WT	
To		634'	
Invoice No.		2003222	

<<< Fold Here >>>

All interpretations are opinions based on inferences from electrical or other measurements and we cannot and do not guarantee the accuracy or correctness of any interpretation, and we shall not, except in the case of gross or willful negligence on our part, be liable or responsible for any loss, costs, damages, or expenses incurred or sustained by anyone resulting from any interpretation made by any of our officers, agents or employees. These interpretations are also subject to our general terms and conditions set out in our current Price Schedule.

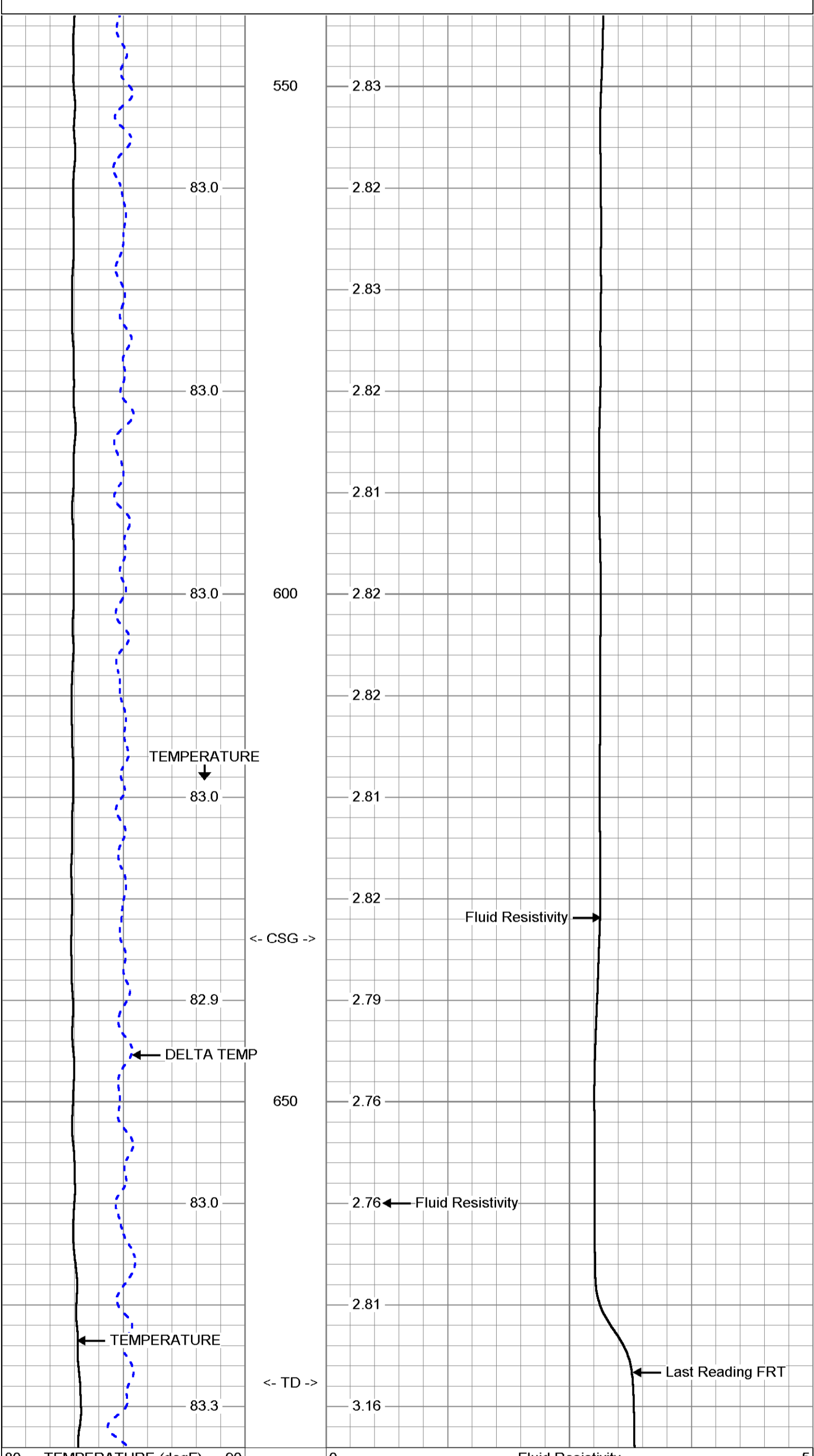
Comments

A STATIC DOWN pass was performed.
 Rw=2.870 ohm-m @ 82.7 degF (Dynamic Sample). Q=450 gpm.
FLUID RESISTIVITY CALIBRATION REPORT (Performed:6-JAN-04 11:00)
 OHM-M CPS
 0.846 2222.76
 1.583 2472.74
 3.119 3092.19
TEMPERATURE CALIBRATION REPORT (Performed: 6-JAN-04 11:30)
 DEG-F CPS
 35.3 2351.21
 143.9 6971.21

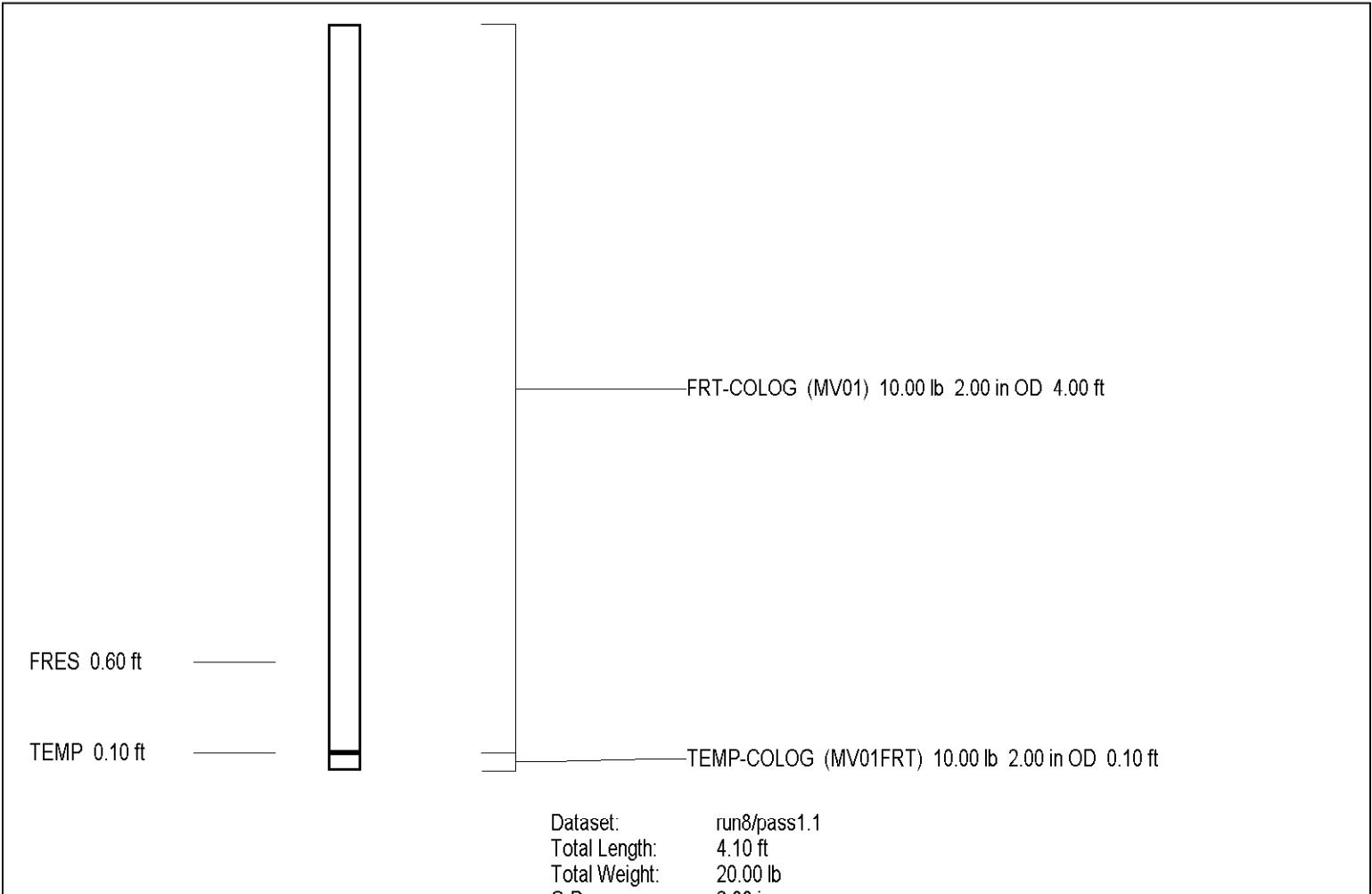
MV Geophysical STATIC FRT DOWN

Database File: exbry-1.db
 Dataset Pathname: run8/pass1.1
 Presentation Format: FRTTEMP
 Dataset Creation: Mon Feb 09 19:55:02 2004 by Calc VER_5.3
 Charted by: Depth in Feet scaled 1:120

80	TEMPERATURE (degF)	90	0	Fluid Resistivity	5
-0.5	DELTA TEMP (degF)	0.5			



80	TEMPERATURE (degF)	90	0	Fluid Resistivity	5
-0.5	DELTA TEMP (degF)	0.5			



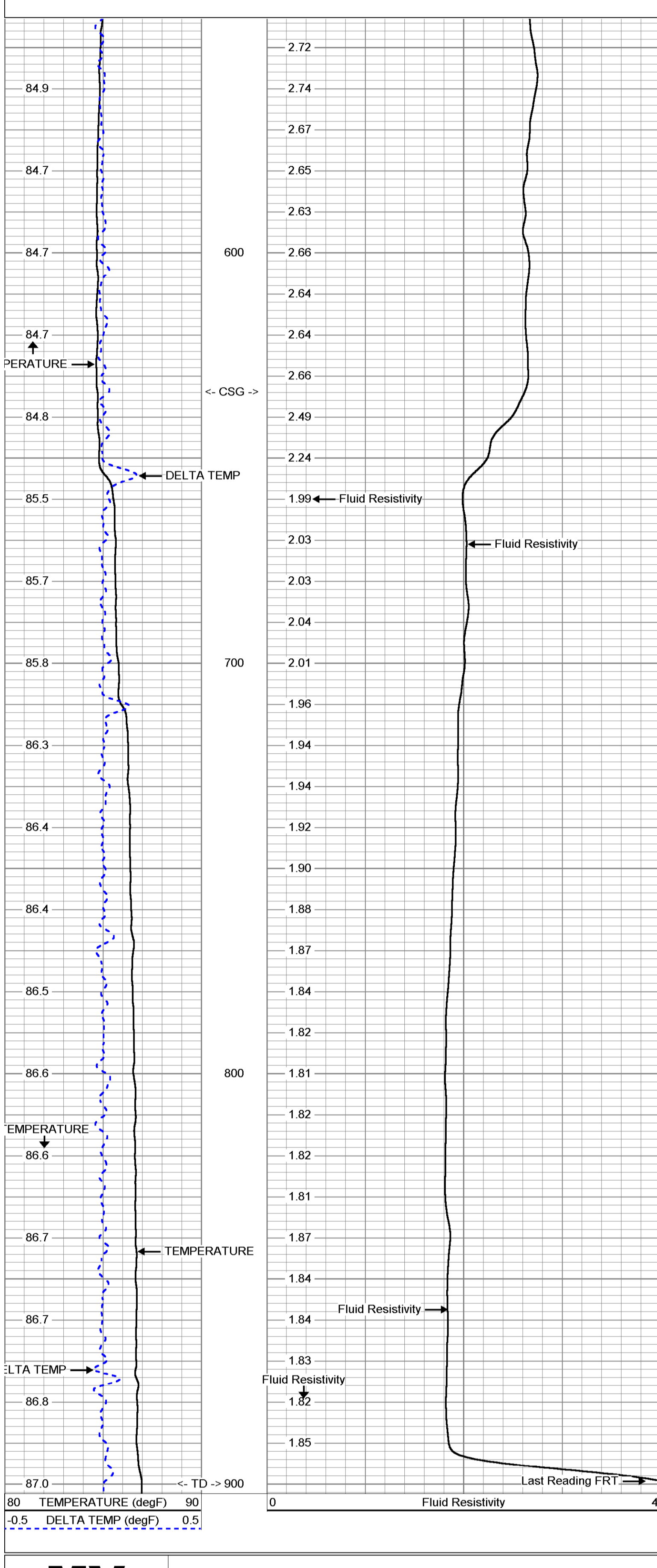
Company	Diversified Drilling Corp.	Location	Lat: 26 41'13.209" N Long: 81 33'13.710" W	Other Services	Flow XY/OR
Well	CRASR-EXBRY-1	County	Henry	State/Prv	Florida
Field	Berry Grove	Company	Diversified Drilling Corporation		
Well	CRASR-EXBRY-1				
Field	Berry Grove				
County	Henry				
State/Prv	Florida				
Run Number	18-MAR-2004	Permanent Datum	G.L.	Elevation	G.L.
Well	CRASR-EXBRY-1	Log Measured From	G.L.		
Field	Berry Grove	Drilling Measured From	G.L.		
County	Henry				
State/Prv	Florida				
Run Number	SEVEN				
Depth Driller	900'				
Depth Logger	900'				
Bottom Logged Interval	900'				
Top Log Interval	54.3'				
Open Hole Size	22.5"				
Type Fluid	WATER				
Density / Viscosity	NANA				
Max. Recorded Temp.	SEE FRT LOG				
Estimated Cement Top	287'				
Time Well Ready	08:00 3/18/04				
Time Logger on Bottom	08:30 3/18/04				
Equipment Number	M/GS-1				
Location	FL MARS				
Recorded By	S Miller / C Miller				
Witnessed By	G Sussort (WRS)				
Run Number	ONE	Boreside Record		Turn Record	
ONE	40'	Bit	From	To	
TWO	40'	Size	33"	240'	640'
THREE	40'	TYPE	22.5"	740'	740'
FOUR	240'	SEVEN	22.5"	634'	900'
FOUR	555'	1073'			
CSING RECORD	42"	WGT/FI		TOP	BOTTOM
Surface Slimg	34"	0.375" WT		SURFACE	40'
Production Slimg	24"	0.500" WT		SURFACE	240'
Liner	24"	0.375" WT		SURFACE	634'
Lineer	2004049				

Comments: STATIC & DYNAMIC DOWN passes were performed. Rw=2.516 ohm-m @ 84.7 degF (Dynamic Sample). Q=779 gpm. FLUID RESISTIVITY CALIBRATION REPORT (Performed: 16-FEB-04 11:00)

OHM-M	CPS
0.332	1993.32
0.735	2153.36
1.733	2463.23
28.35	4535.23
TEMPERATURE CALIBRATION REPORT (Performed: 16-FEB-04 11:45)	
DEG-F	CPS
34.4	2344.41
144.4	6954.24

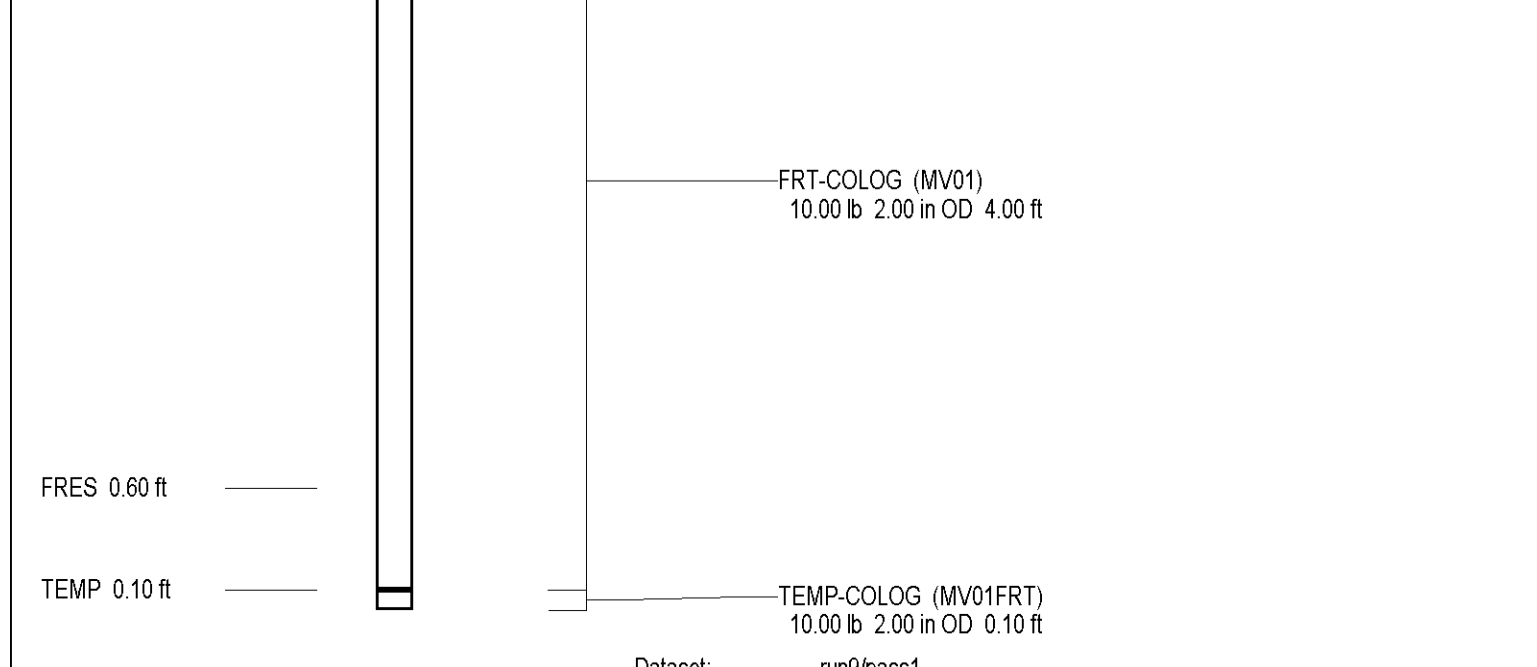
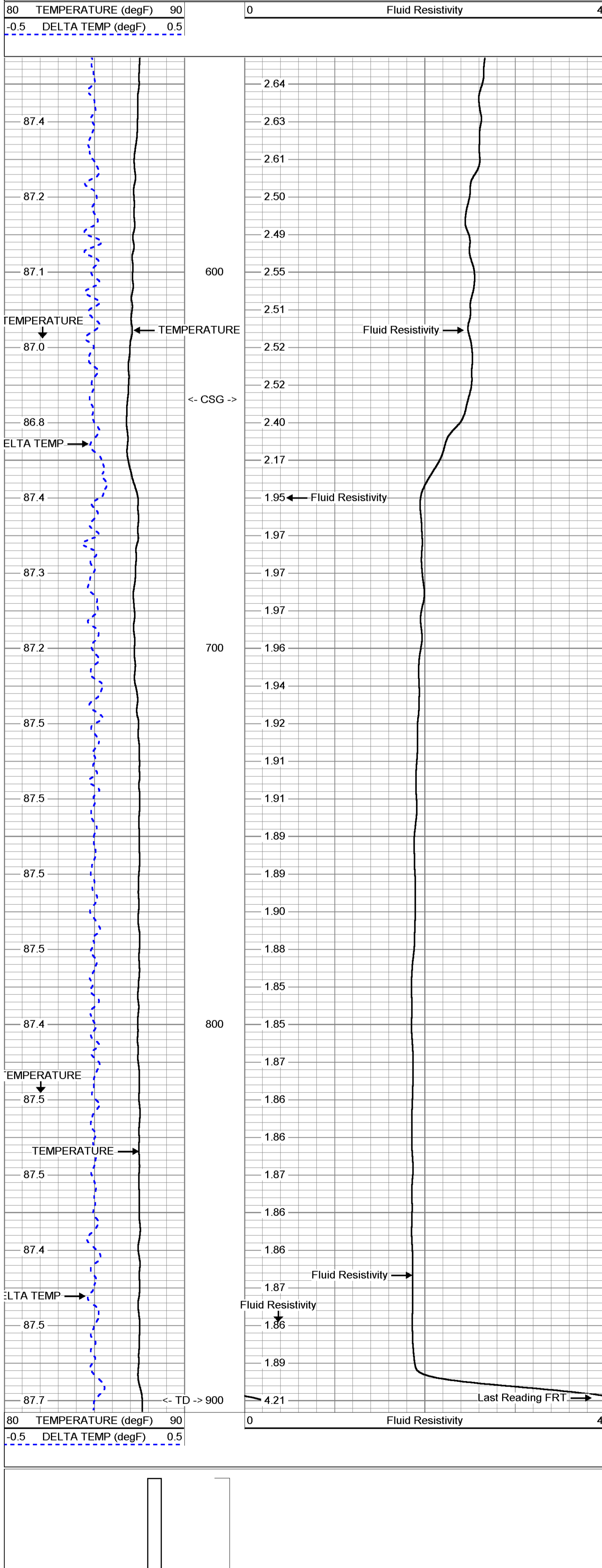
MV Geophysical DYNAMIC FRT DOWN

Database File: exbry-1.db
 Dataset Pathname: run9/dfrt
 Presentation Format: FRTBRY1
 Dataset Creation: Fri Mar 19 00:39:29 2004
 Charted by: Depth in Feet scaled 1:240



MV Geophysical STATIC FRT DOWN

Database File: exbry-1.db
 Dataset Pathname: run9/sfrrt
 Presentation Format: FRTBRY1
 Dataset Creation: Thu Mar 11 20:34:45 2004
 Charted by: Depth in Feet scaled 1:240



Company	Diversified Drilling Corp.	Company	Diversified Drilling Corporation
Well	CRASR-EXBRY-1	Well	CRASR-EXBRY-1
Field	Berry Grove	Field	Berry Grove
County	Hendry	County	Hendry
State/Prv	Florida	State/Prv	Florida
Location		Location	
	Lat.: 26 41'13.209" N		Other Services
	Long.: 81 33'13.710" W		FRT
	SFWMD / WRS		XVGR
Permanent Datum	G.L.	Elevation	
Log Measured From	G.L.	K.B.	
Drilling Measured From	G.L.	D.F.	
Date	18/MAR/2004		
Run Number	SEVEN		
Depth Order	900'		
Depth Log	500'		
Depth Log Interval	50'		
Open Hole Size	22.25"		
Type Fluid	WATER		
Density / Viscosity	N/A/N/A		
Max. Recorded Temp.	SEE FRT LOG		
Estimated Cement Top			
Time Used Ready	08:00:30/1804		
Time Logged on Bottom	09:30:30/1804		
Estimated Cement Bottom			
Location			
Location Number			
Witnessed By	S.Miller / C.Miller		
Recorded By	G.Susdorf (WRS)		
Witnessed By	S.Underwood (DDC)		
Run Number	Bit	From	To
ONE	9.625"	40'	255'
TWO	9.625"	240'	640'
THREE	9.625"	240'	560'
FOUR	7.625"	560'	SEVEN
Size	1073'		
Casing Record	42"	Wd/Gr	Top
Surface String	34"	0.500" WT	SURFACE
Prod. String	24"	0.375" WT	SURFACE
Production String		0.375" WT	SURFACE
Log No.	20004049		

All interpretations are opinions based on inferences from electrical or other measurements and we cannot and do not guarantee the accuracy or correctness of any interpretation, and we shall not, except in the case of gross or willful negligence on our part, be liable or responsible for any loss, costs, damages, or expenses incurred or sustained by anyone resulting from any interpretation made by any of our officers, agents or employees. These interpretations are also subject to our general terms and conditions set out in our current Price Schedule.

Comments

STATIC & DYNAMIC down passes were made at 50 fpm.

4 Stations were performed

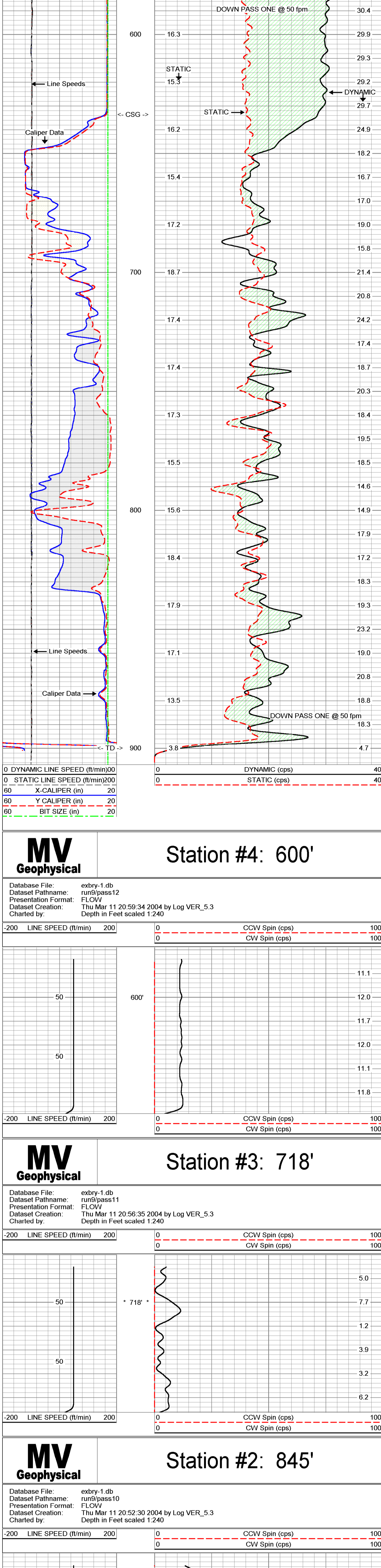
Q=779 gpm

Caliper data merged to SD50 file is from "REPEAT" pass.

MV Geophysical **S/D Down @ 50 fpm**

Database File: exbry-1.db
 Dataset Pathname: run9/sd50
 Presentation Format: Q40BRY1
 Dataset Creation: Fri Mar 19 01:43:47 2004
 Charted by: Depth in Feet scaled 1:240

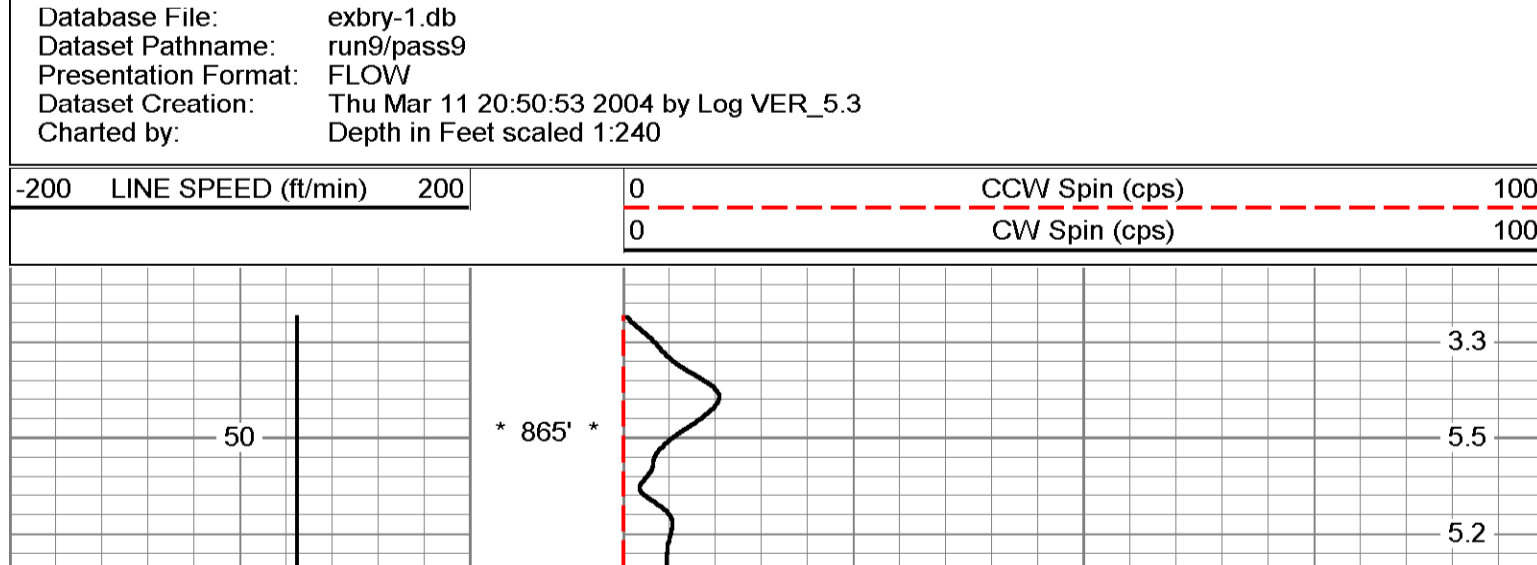
0 DYNAMIC LINE SPEED (ft/min)00	0 DYNAMIC (cps)	40
0 STATIC LINE SPEED (ft/min)200	0 STATIC (cps)	40
60 X-CALIPER (in)		20
60 Y-CALIPER (in)		20
60 BIT SIZE (in)		20



MV Geophysical **Station #4: 600'**

Database File: exbry-1.db
 Dataset Pathname: run9/pass12
 Presentation Format: FLOW
 Dataset Creation: Thu Mar 11 20:59:34 2004 by Log VER_5.3
 Charted by: Depth in Feet scaled 1:240

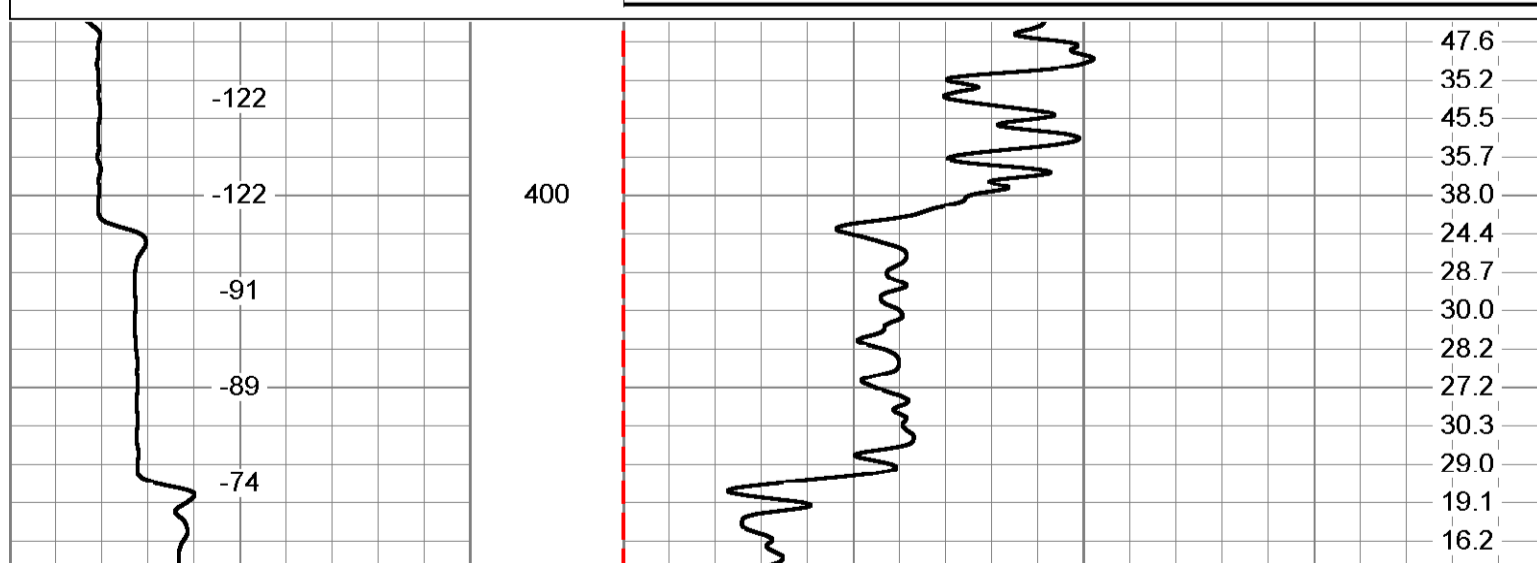
-200 LINE SPEED (ft/min) 200	0 CCW Spin (cps)	100
	0 CW Spin (cps)	100



MV Geophysical **Station #3: 718'**

Database File: exbry-1.db
 Dataset Pathname: run9/pass11
 Presentation Format: FLOW
 Dataset Creation: Thu Mar 11 20:56:35 2004 by Log VER_5.3
 Charted by: Depth in Feet scaled 1:240

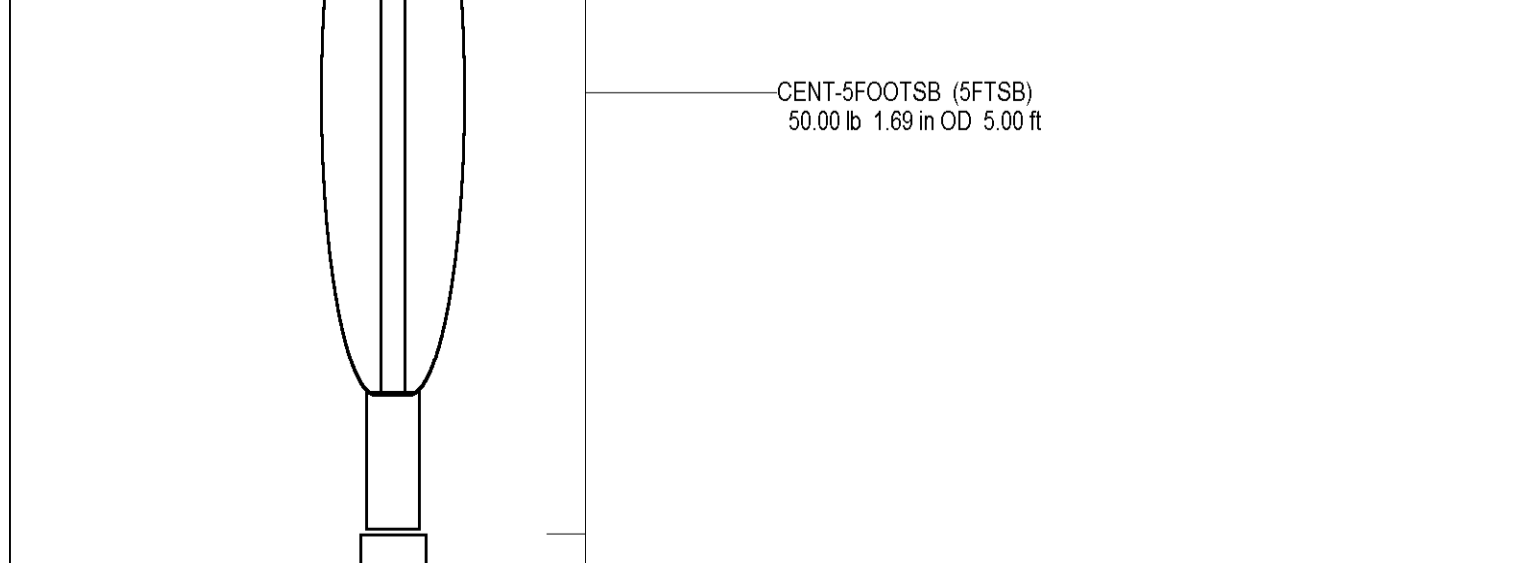
-200 LINE SPEED (ft/min) 200	0 CCW Spin (cps)	100
	0 CW Spin (cps)	100



MV Geophysical **Station #2: 845'**

Database File: exbry-1.db
 Dataset Pathname: run9/pass10
 Presentation Format: FLOW
 Dataset Creation: Thu Mar 11 20:52:30 2004 by Log VER_5.3
 Charted by: Depth in Feet scaled 1:240

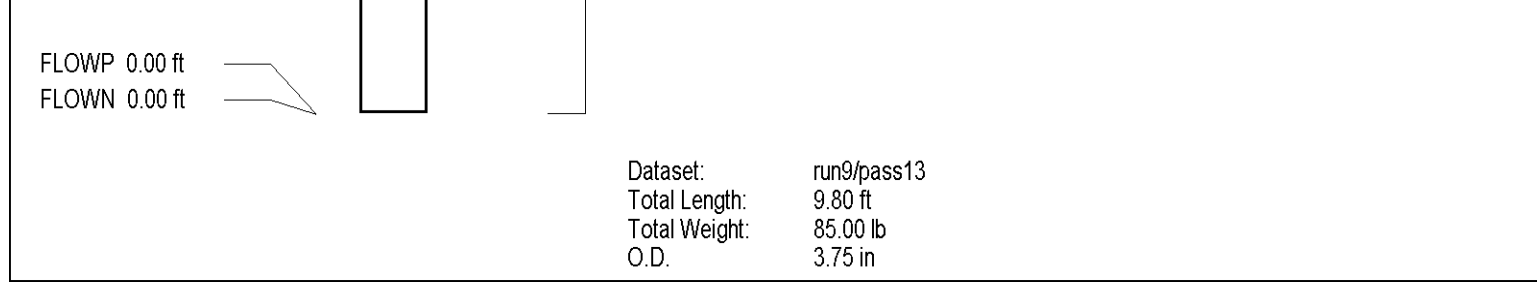
-200 LINE SPEED (ft/min) 200	0 CCW Spin (cps)	100
	0 CW Spin (cps)	100



MV Geophysical **Station #1: 865'**

Database File: exbry-1.db
 Dataset Pathname: run9/pass9
 Presentation Format: FLOW
 Dataset Creation: Thu Mar 11 20:50:53 2004 by Log VER_5.3
 Charted by: Depth in Feet scaled 1:240

-200 LINE SPEED (ft/min) 200	0 CCW Spin (cps)	100
	0 CW Spin (cps)	100



MV Geophysical **Q Calibration Down**

Database File: exbry-1.db
 Dataset Pathname: run9/pass13
 Presentation Format: FLOW
 Dataset Creation: Thu Mar 11 21:03:37 2004 by Log VER_5.3
 Charted by: Depth in Feet scaled 1:600

-200 LINE SPEED (ft/min) 200	0 CCW Spin (cps)	100
	0 CW Spin (cps)	100

Dataset: run9/pass13
 Total Length: 9.80 ft
 Total Weight: 85.00 lb
 O.D.: 3.75 in

