

**NOTE**

1. DRAWING IS PRODUCED FROM U S GEOLOGICAL SURVEY MAP.

**LEGEND**

- ◆ TEST WELL AND OBS WELL
- ◆ EXPLORATORY BORING COMPLETED AS OBSERVATION WELL
- EXISTING MARTIN PLANT PRODUCTION WELL
- FLORIDAN AQUIFER TEST WELL

NO.	DATE	REVISIONS	BY	CHK	DES	ENGR	PROJ	APPR
<b>BECHTEL</b> GAITHERSBURG, MARYLAND								
<b>FLORIDA POWER &amp; LIGHT COMPANY</b> OF 170 MARTIN COMBINED CYCLE UNITS COAL GASIFICATION COMPATIBLE PROJECTS								
<b>TEST WELL LOCATION PLAN</b> FIGURE 4.1-1								
SCALE	1"=2000'	19720					SK C 009	



FLORIDA GEOPHYSICAL LOGGING, INC.

FT. MYERS

(813) 489-2155

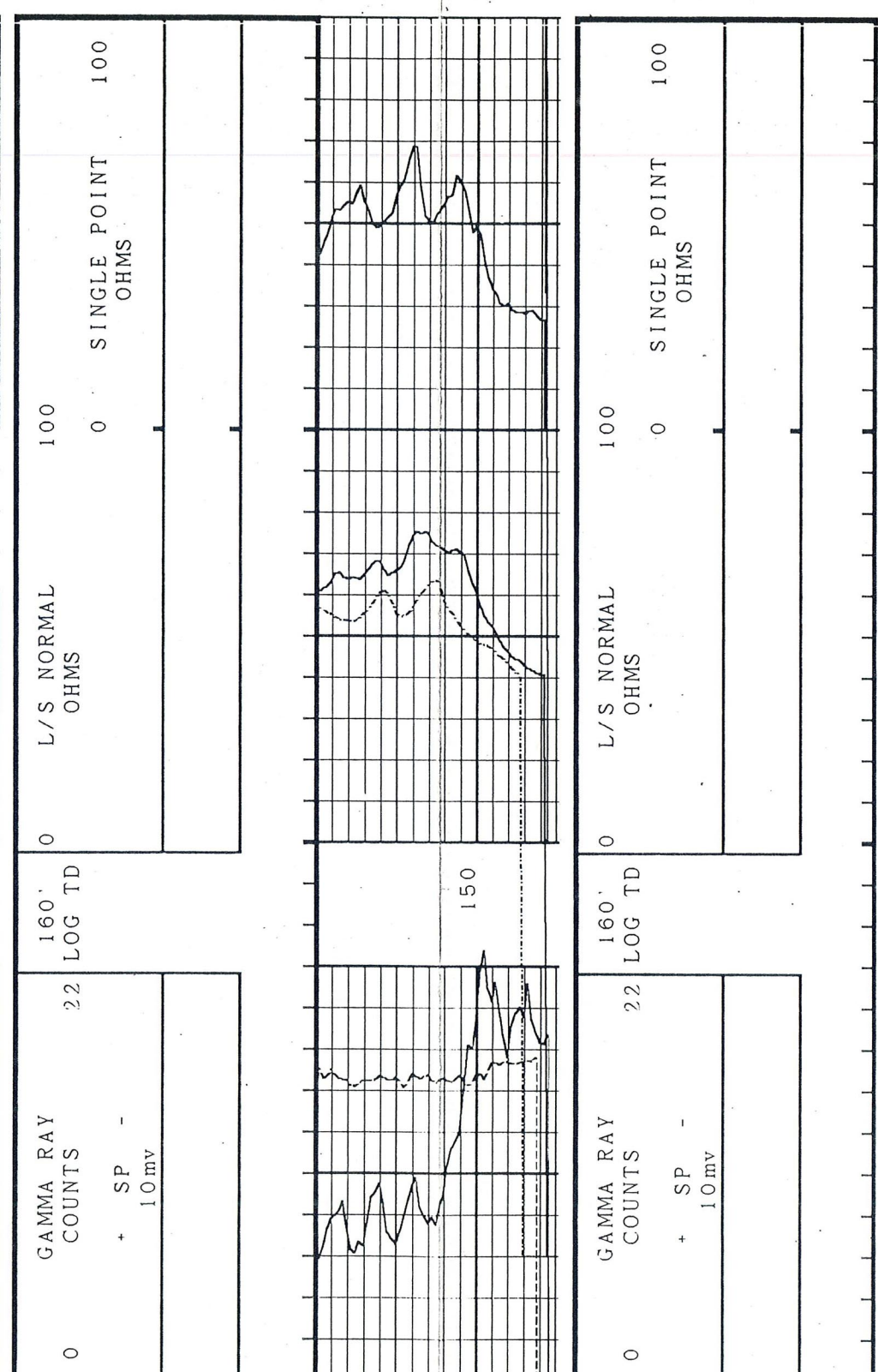
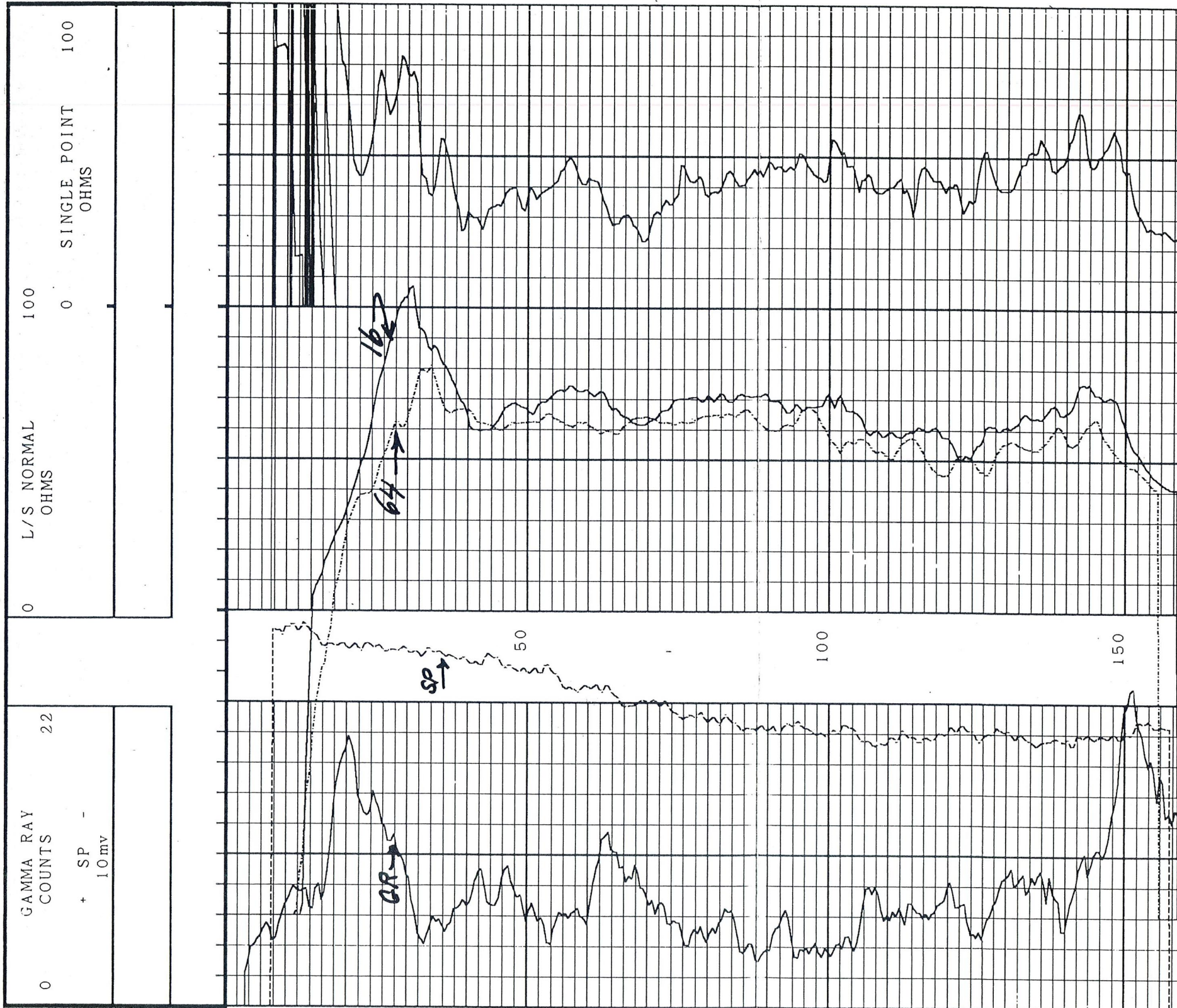
FILING NO. COMPANY DRILLING SERVICES, INC.  
 WELL BEX-2  
 FIELD FP&L MARTIN CC/CG  
 COUNTY MARTIN STATE FLORIDA

LOCATION: SE4/SE4 OTHER SERV:  
 SEC 33 TWP 39S RGE 38E

PERMANENT DATUM: GROUND LEVEL ELEV:  
 LOG MEASURED FROM 0 FT ABOVE PERM DATUM  
 DRILLING MEASURED FROM 0 ELEVATION:  
 KB.  
 DF.  
 GL.

DATE	5-3-89	5-3-89
RUN NO.	ONE GR	TWO E-LOG
DEPTH - DRILLER	160'	160'
DEPTH - LOGGER	160'	160'
BOTTOM LOGGED INT	159.5'	
TOP LOGGED INT	4'	
TYPE FLUID IN HOLE	MUD	
SALINITY PPM CL.		
DENSITY		
LEVEL	FULL	
MAX TEMP DEG F		
OPERATING RIG TIME	NA	
RECORDED BY	D. WILSON	
WITNESSED BY	MR. BLODNIKAR	

RUN NO.	BORE HOLE RECORD			CASING RECORD		
	BIT	FROM	TO	SIZE	WGT.	FROM TO
1	6"	0	160'			







# OBSERVATION WELL

PROJECT: *FPIL MARTIN CC/66*

WELL NO.: *BEX-2*

JOB NO. *19720* SITE *TRANSMISSION LINE CORRIDOR*

COORDINATES *N 951044.10 E 652296.00*

BEGUN *5/3/89* COMPLETED *5/3/89* PREPARED BY *ROBERT L. BLODNIKAR*

REFERENCE POINT FOR MEASUREMENTS *TOP OF 2" DIA PVC RISER PIPE*

GENERALIZED GEOLOGIC LOG

FOR INFORMATION ONLY  
**PRELIMINARY**

