

NOTE

1. DRAWING IS PRODUCED FROM U S GEOLOGICAL SURVEY MAP.

LEGEND

- ◆ TEST WELL AND OBS WELL
- ◆ EXPLORATORY BORING COMPLETED AS OBSERVATION WELL
- EXISTING MARTIN PLANT PRODUCTION WELL
- FLORIDAN AQUIFER TEST WELL

NO.	DATE	REVISIONS	BY	CHK	DES	ENGR	PROJ	APPR
BECHTEL GAITHERSBURG, MARYLAND								
FLORIDA POWER & LIGHT COMPANY 01 170 MARTIN COMBINED CYCLE UNITS COAL GASIFICATION COMPATIBLE PROJECTS								
TEST WELL LOCATION PLAN FIGURE 4.1-1								
SCALE	1"=2000'	19720	SK C 009					

FLORIDA GEOPHYSICAL LOGGING, INC.

FT. MYERS

(813) 489-2155

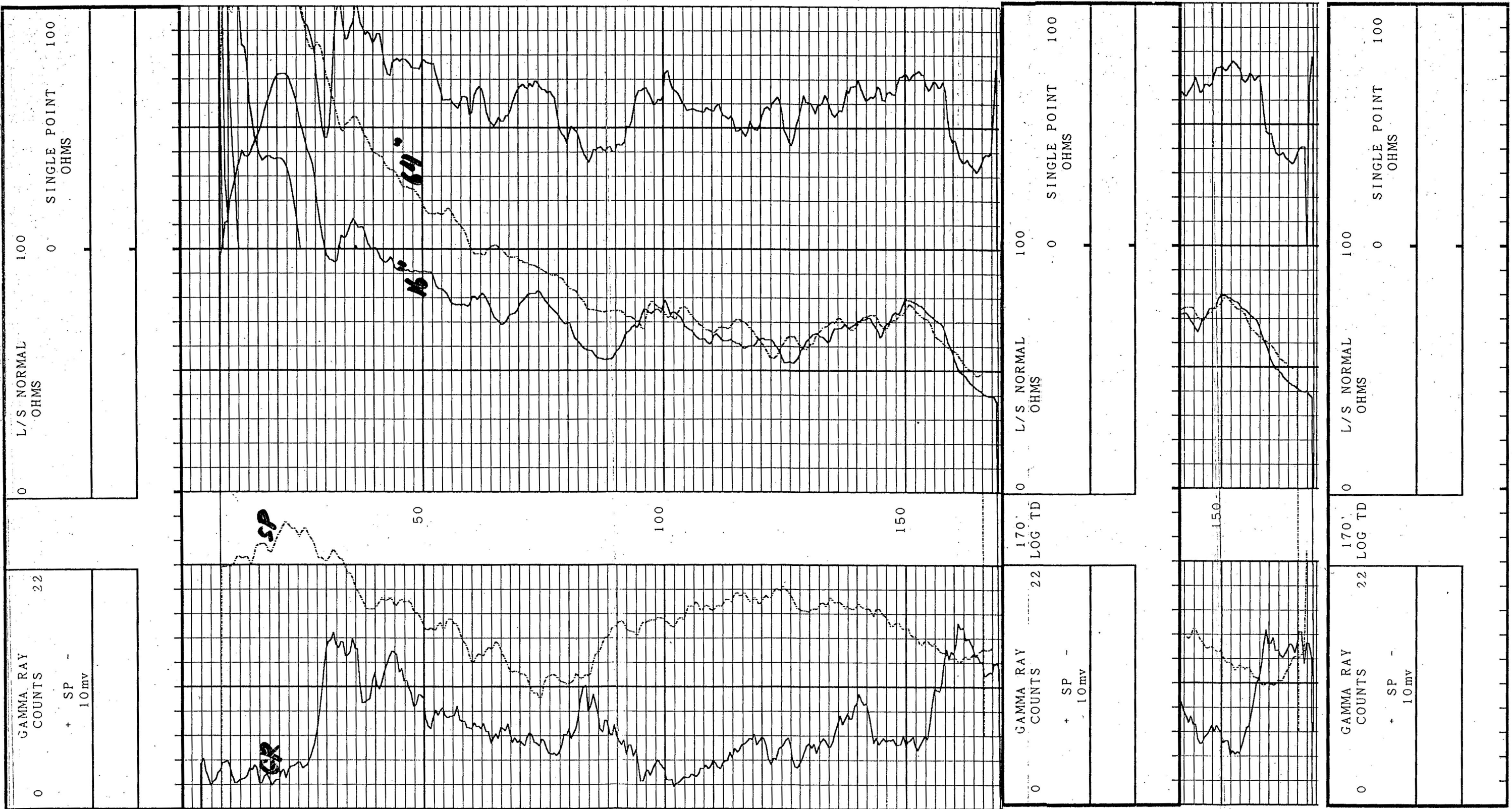
FILING NO. COMPANY DRILLING SERVICES, INC.
 WELL BEX-4
 FIELD FP&L MARTIN CC/CG
 COUNTY MARTIN STATE FLORIDA

LOCATION: NE4/SE4
 SEC 28 TWP 39S RGE 38E
 OTHER SERV:

PERMANENT DATUM: GROUND LEVEL ELEV: ELEVATION: KB.
 LOG MEASURED FROM 0 FT ABOVE PERM DATUM DF.
 DRILLING MEASURED FROM 0 GL.

DATE 5-8-89 5-8-89
 RUN NO. ONE GR TWO E-LOG
 DEPTH - DRILLER 170' 170'
 DEPTH - LOGGER 170' 170'
 BOTTOM LOGGED INT 169.5'
 TOP LOGGED INT 4'
 TYPE FLUID IN HOLE MUD
 SALINITY PPM CL.
 DENSITY LEVEL FULL
 MAX TEMP DEG F
 OPERATING RIG TIME NA
 RECORDED BY D. WILSON
 WITNESSED BY MR. BLODNIKAR

RUN NO.	BORE HOLE RECORD			CASING RECORD		
	BIT	FROM	TO	SIZE	WGT.	FROM TO
1	6"	0	170'			





OBSERVATION WELL

PROJECT *FD&L MARTIN LLC*

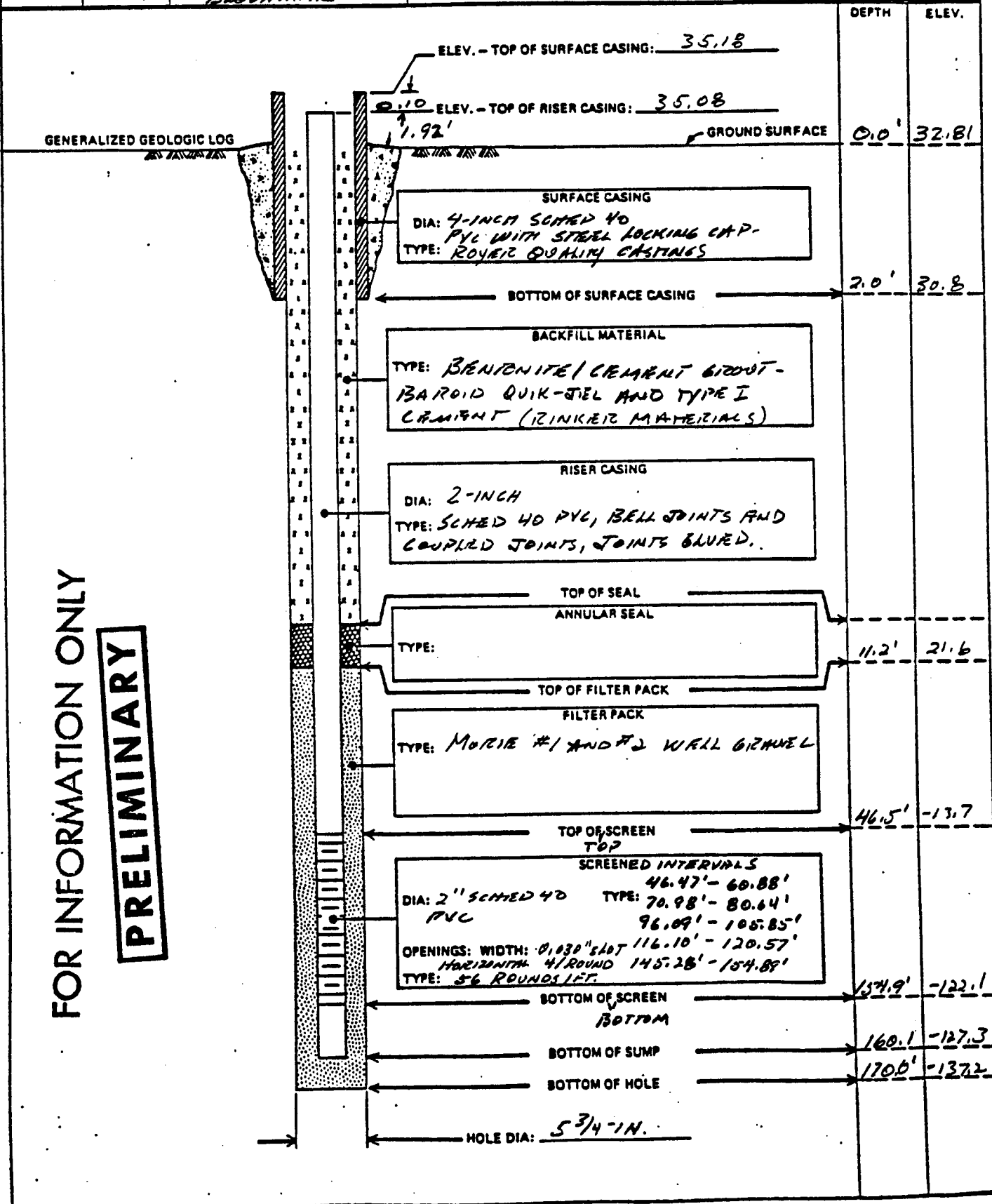
WELL NO. *BEX-4*

JOB NO. *19720* SITE *TRANSMISSION LINE CORRIDOR*

COORDINATES *N 987651.52 E 652195.19*

BEGUN *5/8/89* COMPLETED *5/8/89* PREPARED BY *ROBERT L. BLOONIKAR*

REFERENCE POINT FOR MEASUREMENTS *TOP OF 2-INCH PVC RISER PIPE*



FOR INFORMATION ONLY
PRELIMINARY