



SURVEYOR'S REPORT

**Specific Purpose Survey of the
United States Geological Survey
Recorder Well G-3355
in
Miami-Dade County, Florida**

Prepared for:

South Florida Water Management District

3301 Gun—Club Road
West Palm Beach, Florida 33406
Ph. (561) 686-8800 (ext. 2978)
Fax (561) 682-0066

Prepared by:

Mike Bartholomew, PSM, President
Florida Professional Surveyor and Mapper
License Number 5666
State of Florida

Biscayne Engineering Company, Inc. LB No 0129
529 West Flagler Street, Miami, FL. 33130
Tel (305) 324-7671

Field Date: April 3, 2019
Report Date: April 19, 2019
BEC Order #: 03-86445

INSPIRED BEYOND MEASURE • SINCE 1898

**CORPORATE
HEADQUARTERS**
529 West Flagler Street,
Miami, FL 33130
Tel. 305.324.7671
Fax 305.324.0809

www.BiscayneEngineering.com
info@BiscayneEngineering.com

**PALM BEACH
BRANCH**
449 NW 35th Street,
Boca Raton, FL 33431
Tel. 561.603.2329
Fax 561.609.2317

TABLE OF CONTENTS

Title	Page
Cover Sheet	1
Table of Contents	2
Purpose	3
Location of Project	3
Surveyor's Report	4
Project Datum's	4
Leveling and GPS Methods	4
Equipment used	4
Vertical Control Points	5 & 6
Benchmarks summary	5 & 6
Field Notes	6
Project Results	7
Surveyor's Notes	9
Surveyor's Certificate	10
SFWMD Site Form	11

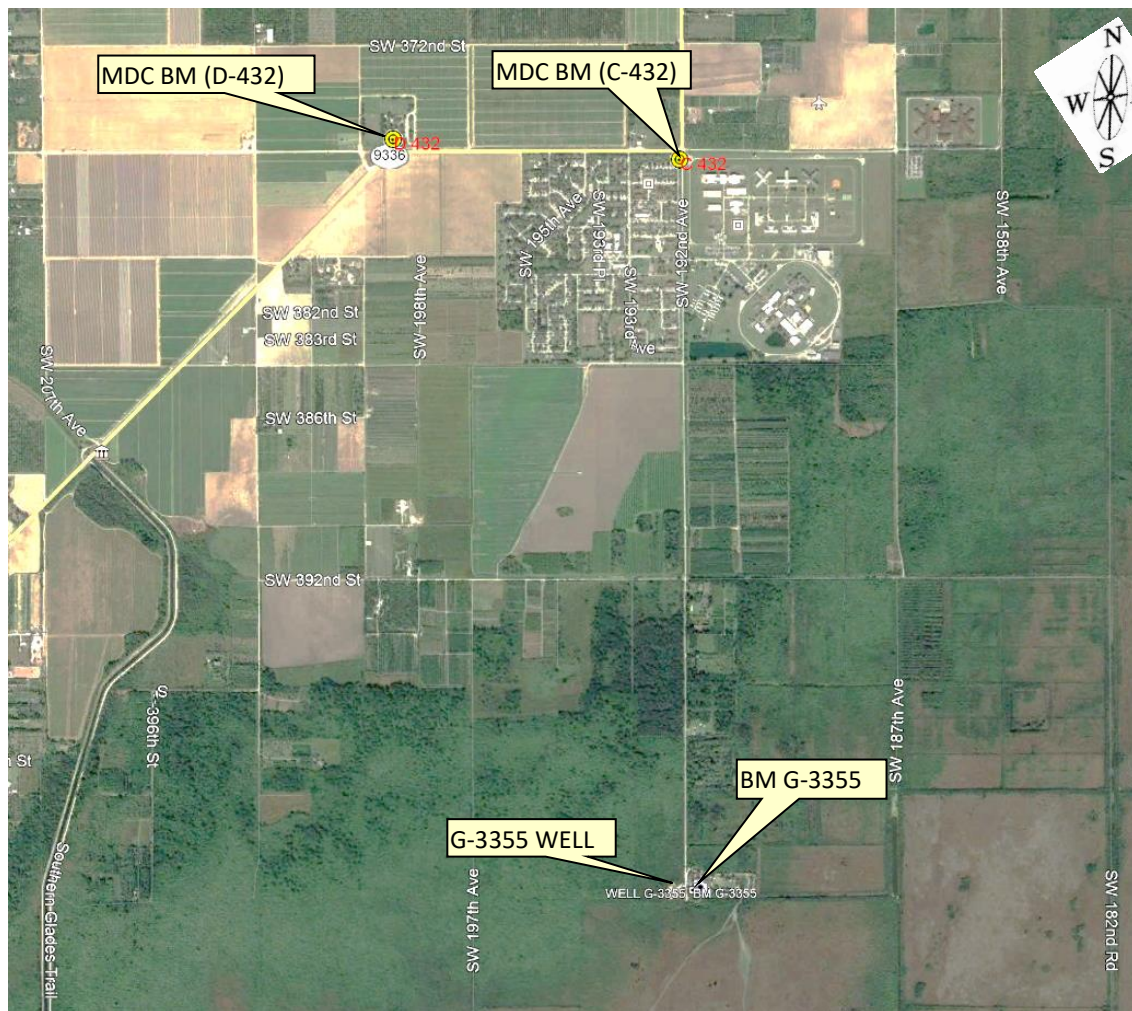
SURVEYOR'S REPORT

PURPOSE

The purpose of this survey is to set an Elevation Reference Mark (Benchmark) consisting of a mag nail and washer and to establish a North American Vertical Datum of 1988 (NAVD 88) elevation on said Benchmark and on an additional Reference Point with a Brass plate, both at United States Geological Survey Well **G-3355**.

LOCATION OF PROJECT

The United States Geological Survey's Recorder Well **G-3355** is located in Section 11, Township 58 South, Range 38 East, Miami-Dade County, Florida.



General Location (Intended Display scale is "Not to Scale")

PROJECT VERTICAL DATUM

The project vertical datum is the North American Vertical Datum (NAVD) of 1988.

To convert the NAVD 88 elevation to the National Geodetic Vertical Datum of 1929 at station **G-3355 add 1.51'**. These values are based on Corpscon 6.0.1 a US. Army Corps of Engineers Engineering Research and Development Center Topographic Engineering Center Alexandria, Virginia Windows-based program to convert coordinates and elevations between datum's using vertcon05.txt and vertcon05.05 files supplied by the US. Army Corps of Engineers South Atlantic Division, Jacksonville Fl.

PROJECT HORIZONTAL DATUM

The project horizontal datum is the North American Datum 83 (NAD 83(2011)) (EPOCH:2010.0000).

LEVELING METHODS

The leveling for this project was performed in accordance with standard survey practice using conventional third order methods, techniques and equipment.

The allowable error (.05 √ miles) on this project meets or exceeds third order closures as required by SFWMD for this project per executed SOW for 4600003705-WO04 and discussions with SFWMD.

A level loop was run from the Miami-Dade County Benchmark D 432, through the well site, and to the Miami-Dade County Benchmark C 432. The measurements were collected using a Digital Level and were hand written in Biscayne Engineering Co, Inc. Field Book 2995 pages 18-29, dated April 03, 2019 reduced and adjusted electronically. Additional data was manually recorded in the field book.

GPS METHODS

Latitude and Longitude for Benchmark G-3355 were established by observing a 3-minute session of GPS data on April 3, 2019 using a Trimble R-8S and The Florida Permanent Reference Network (FPRN). The FPRN network consists of nearly 100 Continuously Operating Reference Stations (CORS) located throughout Florida.


EQUIPMENT USED


- Trimble GPS unit R-8-S, Serial Number 5625R066188.
- TOPCON DL-500 digital level Serial Number 512386 and a folding bar code rod.
- TOPCON Total Station GM-103, Serial Number ZQ000748.
- TOPCON Auto-level DL-500, Serial Number 512386.

SURVEYOR'S REPORT


VERTICAL CONTROL POINT

The Vertical Control point utilized and set as part of this survey is the:

M-DC D 432						
25° 25' 07.89" (N)	80° 30' 44.16" (W)		8.50 ft.	(NAVD88)	2.59 m	Published
			10.01 ft.	(NGVD29)	3.05 m	Published
				1.51 ft. (conversion factor)		Corpscon 6.0.1
			<p>THE MARK IS LOCATED: SW 376 ST --- 162' NORTH OF C/L EXTENDED WEST SW 198 AVE --- 264' WEST OF C/L 109' SOUTH OF BENITO JUAREZ PARK GAZEBO.</p> <p>BRASS DISC IN CONCRETE SIDEWALK, 140' WEST OF WEST EDGE OF PARKING LOT.</p>			

M-DC BM C 432						
25° 25' 05.40" (N)	80° 30' 05.13" (W)		7.08 ft.	(NAVD88)	2.16 m	Published
			8.59 ft.	(NGVD29)	2.62 m	Published
				1.51 ft. (conversion factor)		Corpscon 6.0.1
			<p>THE MARK IS LOCATED: SW 376 ST --- 103' SOUTH OF C/L SW 192 AVE --- 31' WEST OF C/L 5' SE OF SE CORNER OF ANGLED FENCE</p> <p>BRASS DISK IN CONCRETE MONUMENT.</p>			

SURVEYOR'S REPORT

BM: G-3355 (Set as part of this survey)					
25° 23' 35.52" (N)	80° 30' 03.38" (W)	3.86 ft.	(NAVD88)	1.18 m	Level run
		5.38ft.	(NGVD29)	1.64 m	Converted
				1.51 ft. (conversion factor)	Corpscon 6.0.1
		STATION IS A MAG NAIL AND WASHER STAMPED "BEC 0129 AND G-3355" SET ON CONCRETE SIDEWALK. LOCATED: SW 392 ND STREET – 0.73 ML SOUTH TOWER ROAD – 86' EAST			

Field Book 2095, Page 29

STA	BS	DIST	HI	FS	DIST	ELEVATION	BM ELEV	DESCRIPTION
CP N. 3	5.152	136.40	8.278				3.126	SET MNLW BEC 0129 G-3355 SEE PAGE N. 22, ELEV. 3.126 NAVD-88
100				2.306	23.60			WOOD BASE
101				2.384	24.10			WELL G-3355 (TOP OF PIPE, 6")
BM #1				4.414	19.20			SET MNLW BEC 0129 G-3355 ON CONC SIDEWALK
SHAPE	4.560	19.40	8.424					
CP N. 2				5.020	19.50			SET ILL BEC 0129 SEE PAGE N. 22, ELEV. 3.413 NAVD-88

**BM G-3355
ELEVATION: 3.86'
(NAVD88)**

PROJECT RESULTS

Overall Site



Looking Southeasterly (Oblique not to scale)

SURVEYOR'S REPORT


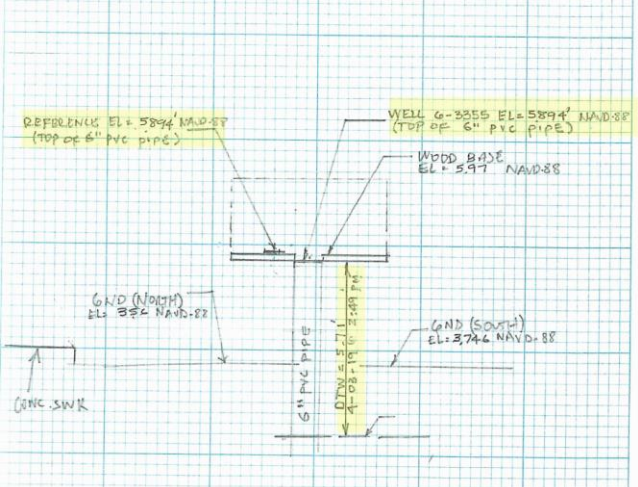
Tabular Form

Reference and Ground Elevations: (NAVD88)			
Well	Ground Elevation	Reference Elevation	Comments
G-3355	3.75 ft.	5.89 ft.	Top of 6" PVC Pipe.
Offset to NGVD29: +1.51' (See Project Vertical Datum Notes in Page: 4)			
Well diameter		Casing material	DTW
6"		Metal	5.71 ft. (04/03/19 at 02:49 PM)

USGS Published: (Per USGS Report Site #: 252332080300501 G-3355) (NGVD29)			
Well	Ground Elevation	Reference Elevation	Comments
G-3355	-	7.740	Top of Base

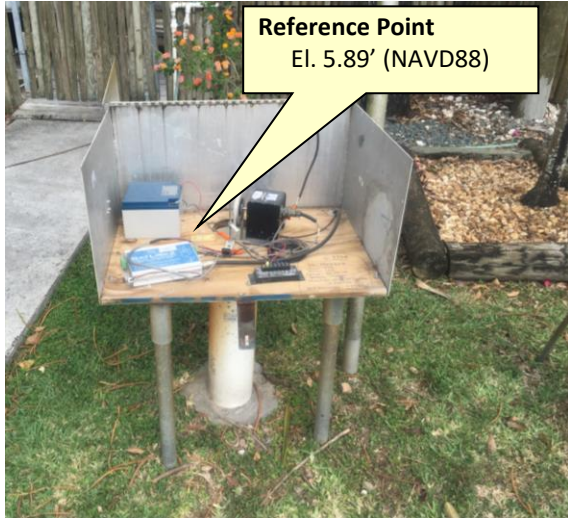
Source & Site Benchmark	NAVD88 (Published)	NGVD29 (Published)	NGVD29 (Corpscon)
D 432 (M-DC)	8.50 ft. (Published)	10.01 ft.	
C 432 (M-DC)	7.08 ft. (Published)	8.59 ft.	
G-3355 (SFWMD)	3.86 ft. (Measured)		5.38 ft. (Converted)
RM 1	3.82 ft. (Measured)		

Well Photos and Diagrams

	
---	--

SURVEYOR'S REPORT

Well Photos and Diagrams (Continued)



Side view (Oblique Not to scale)



Top view (Not to scale)

Surveyors' Notes:

1. All measurements herein are in United States Survey feet and decimal thereof, unless otherwise specified.
2. Underground utilities were not located as part of this survey.
3. This survey report or copies thereof are not valid without the original signature and seal of a Florida licensed Surveyor and Mapper.
4. Additions or deletions to this survey report by other than the signing party (or parties) is prohibited without written consent of the signing party (or parties).
5. To convert from NAVD 88 to NGVD 29 add 1.52 feet. This value is based on Corpscon 6.0.1 a U.S. Army Corps of Engineers Engineering Research and Development Center Topographic Engineering Center Alexandria, Virginia Windows-based program to convert coordinates and elevations between datum's using vertcon05.txt and vertcon05.05 files supplied by the U.S. Army Corps of Engineers South Atlantic Division, Jacksonville Fl.
6. Date of last field work: April 03, 2019, BEC job No. 03-86445.
7. SFWMD Data records (on file at the District's headquarters):
 - A. Electronic Data files:
 - Miscellaneous picture files
 - B. Conventional reporting
 - Field Book: 2995 pages 18-29

SURVEYOR'S REPORT

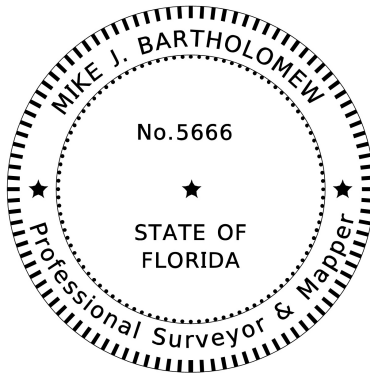
Abbreviations:

- EI.** - Elevation
- DTW** - Distance to the water table inside the well
- M-DC** - Miami-Dade County
- NAVD88** - North American Vertical Datum of 1988
- NGVD29** - National Geodetic Vertical Datum of 1929
- NGS** - National Geodetic Survey
- PSM** - Professional Surveyor & Mapper
- PID** - Permanent Identifiers
- SFWMD** - South Florida Water Management District
- USGS** - United States Geological Survey
- BEC** - Biscayne Engineering Company, Inc.

SURVEYOR'S CERTIFICATION

In my professional opinion this Specific Purpose Survey meets applicable portions of the Standards of Practice set forth by the Florida Board of Professional Surveyors and Mappers in Chapter 5J-17, Florida Administrative Code. This report is prepared for the sole and specific use of the South Florida Water Management District and is not assignable.

Last date of Survey
April 03, 2019



Mike Bartholomew, PSM, President
Florida Professional Surveyor and Mapper
License Number 5666
State of Florida
Biscayne Engineering Company, Inc. LB No 0129
529 West Flagler Street, Miami, FL. 33130
Tel (305) 324-7671



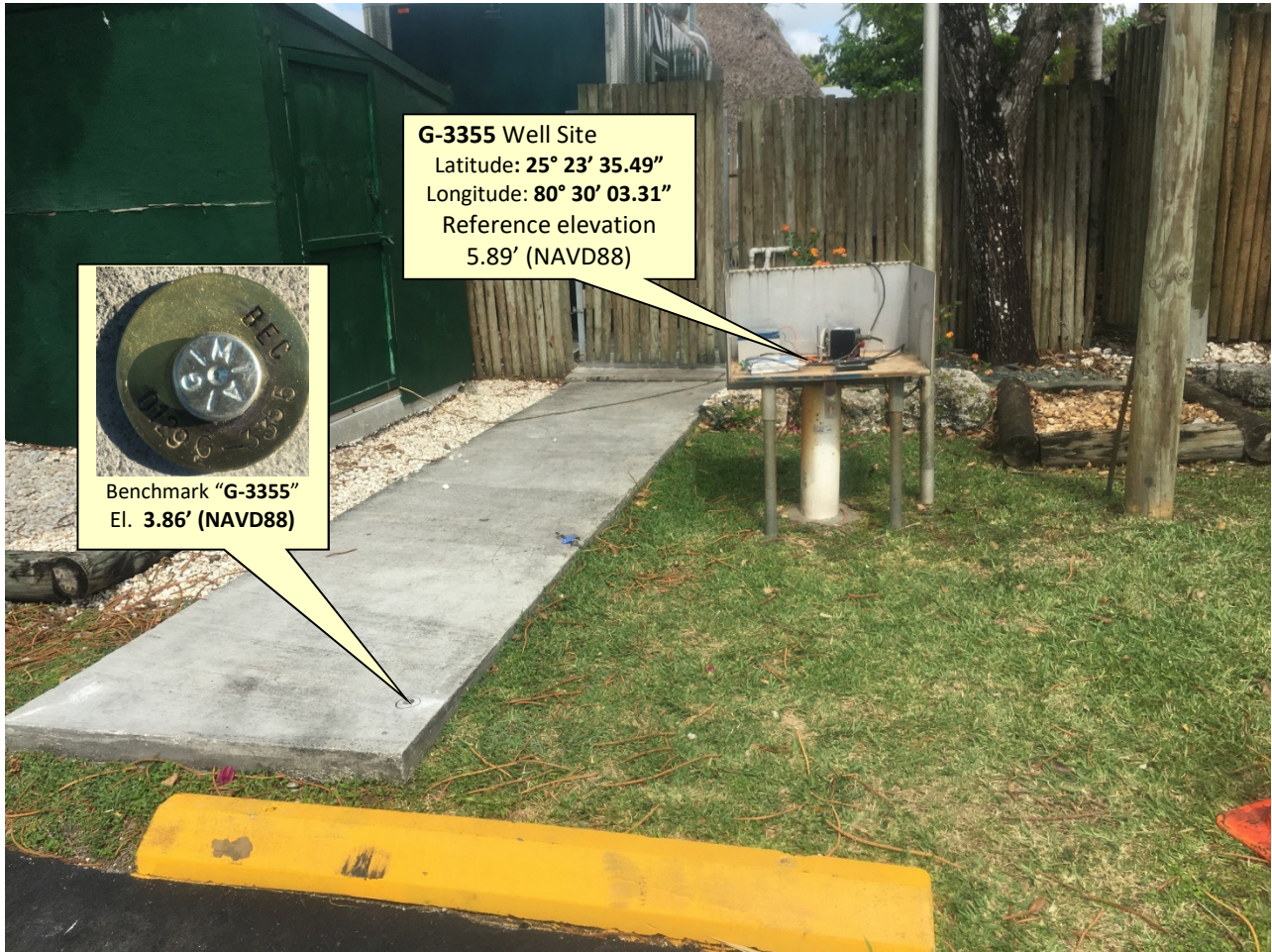
SOUTH FLORIDA WATER MANAGEMENT DISTRICT

Rev. 4/18

DESIGNATION: G-3355		PROJECT: G-3355	
ESTABLISHED BY: SOUTH FLORIDA WATER MANAGEMENT DISTRICT		SURVEYOR: Mike Bartholomew	
RECOVERED BY: BISCAYNE ENGINEERING CO.		DATE: 04/03/19	
GEOGRAPHIC POSITION			
SECTION 11	TOWNSHIP 58 SOUTH	RANGE 38 EAST	
COUNTY: MIAMI-DADE	NAME OF QUADRANGLE: ROYAL PALM RANGER STATION GEOGRAPHIC INDEX OF QUAD:		
HORIZONTAL DATUM: 1927 1983 2022 Other _____ (circle one) ZONE E or W			
VERTICAL DATUM: MSL 1929 1988 2022 Other _____ (circle one)			
VERTICAL ACCURACY: 1 2 3			
STATE PLANE COORDINATE	(N) Y= 385462.81	(E) X= 820917.43	NAVD 88 EL. 3.86' NGVD 29 EL. 5.38'
CORPSCON 6.0.1 CONVERSION FACTOR (NAVD88 TO NGVD29): (A U.S. Army Corps of Engineers Engineering Research and Development Center Topographic Engineering Center Alexandria, Virginia Windows-based program to convert coordinates and elevations between datum's using vertcon05.txt and vertcon05.05 files supplied by the U.S. Army Corps of Engineers South Atlantic Division, Jacksonville FL.) ACTUAL NGS or (ngvd29.txt file) OPUS Ortho Height			
LATITUDE: 25° 23' 35.52" (N)		LONGITUDE: 80° 30' 03.38" (W) (Source) GPS RTK (FPRN)	
RECOVERY DATA			
Stamping: G-3355 BEC 0129			
To Reach: SET ON CONCRETE SIDEWALK. LOCATED: SW 392ND STREET – 0.73 ML SOUTH TOWER ROAD – 86' EAST			
NOTABLE LAND MARKS: EVERGLADES ALLIGATOR FARM			
MDC-SOURCE BENCHMARKS: D-432, C-432			
FIELD BOOK PAGE <u>2995-29</u>			
PICTURES			
Aerial Overall Site			
<div data-bbox="243 1428 495 1711" data-label="Text"> <p>Benchmark "G-3355" El. 3.86' (NAVD88)</p> </div> <div data-bbox="941 1459 1234 1564" data-label="Text"> <p>G-3355 Well Site Latitude: 25° 23' 35.49" Longitude: 80° 30' 03.31"</p> </div>			
NOT TO SCALE (Google Earth product)			



Overall Site



Looking Southeasterly (Oblique not to scale)



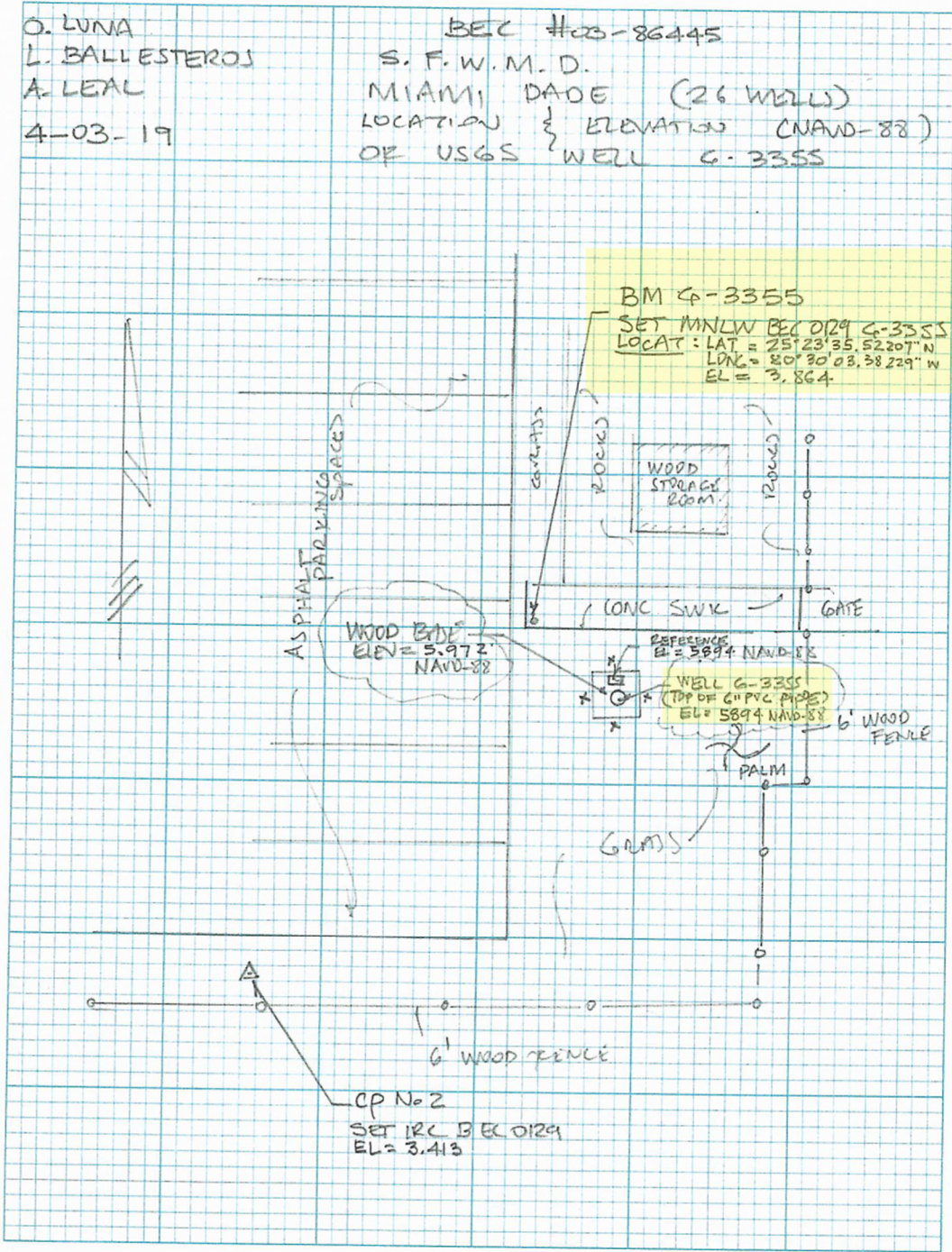
SOUTH FLORIDA WATER MANAGEMENT DISTRICT

Rev. 4/18

SKETCH

O. LUNA
 L. BALLESTEROS
 A. LEAL
 4-03-19

BEC #03-86445
 S. F. W. M. D.
 MIAMI DADE (26 WELLS)
 LOCATION OF USGS WELL G-3355
 ELEVATION (NAVD-88)



Office

Project

14 May 2019

INPUT

Geographic, NAD83
Vertical - NAVD88, U.S. Feet

OUTPUT

Geographic, NAD83
Vertical - NGVD29 (Vertcon94), U.S. Feet

BM G 3355

1/1

Latitude: 25 23 35.52
Longitude: 80 30 03.38
Elevation/Z: 3.86

Latitude: 25 23 35.52000
Longitude: 80 30 03.38000
Elevation/Z: 5.376

Remark:

Office

Project

14 May 2019

INPUT

Geographic, NAD83
Vertical - NAVD88, U.S. Feet

OUTPUT

Geographic, NAD83
Vertical - NGVD29 (Vertcon94), U.S. Feet

WELL G-3355

1/1

Latitude: 25 23 35.49
Longitude: 80 30 03.31
Elevation/Z: 5.89

Latitude: 25 23 35.49000
Longitude: 80 30 03.31000
Elevation/Z: 7.406

Remark:

O. LUNA
 I. BALLESTEROS
 A. LEAL
 4-02-19
 86445015

BEC #03-86445
 S. F. W. M. D.
 MIAMI DADE (26 WELLS),
 LOCATION AND ELEVATION (NAVD-88)
 OF USGS WELL 6-3355

STA	BS	DIST.	HI	FS	DIST
D 432	2.06	219.70	10.56		
NAVD88					
TP N. 1				5.272	221.60
SHAKE	3.948	253.00	9.236		
TP N. 2				4.529	252.90
SHAKE	4.295	258.30	9.002		
TP N. 3				4.371	258.30
SHAKE	4.868	268.10	9.499		
TP N. 4				4.54	268.90
SHAKE	5.211	254.00	10.170		
TP N. 5				3.361	255.10
SHAKE	5.232	270.50	12.041		

2995-18

ELEVATION	BM ELEV.	DESCRIPTION
	8.50	SW 376 ST... 162' NORTH OF C/L EXTENDED WEST. SW 198 AV... 264' WEST OF C/L. 109' SOUTH OF BENITO JUARRE PARK GAZEBO BRASS DISC IN CONC. MONUMENT OF BENITO JUARRE. EL = 10.01' NAVD-29, EL = 8.50' NAVD-88
5.288		SET CORNER 1/2 TT, ± 1' SOUTH OF THE NORTH EP OF THE SW 376 ST, ± 135' EAST FROM SE CORNER TO THE BENITO JUARRE PARK.
4.707		SET CORNER 1/2 TT, ± 1' SOUTH OF THE NORTH EP OF SW 376 ST, ± 505.9' EAST FROM TP N. 1
4.631		SET CORNER 1/2 TT, ± 1' SOUTH OF THE NORTH EP OF SW 376 ST, ± 516.6' EAST FROM TP N. 2
4.955		SET CORNER 1/2 TT, ± 1' SOUTH OF THE NORTH EP OF THE SW 376 ST, ± 537' EAST FROM TP N. 3
6.809		SET CORNER 1/2 TT, ± 1' SOUTH OF THE NORTH EP OF THE SW 376 ST, ± 509.10' EAST FROM TP N. 4

O. LUNA
 L. BALLESTEROS
 A. LEAL
 4-02-19
 86445 OLIS

BEC #03-86445
 S. F. W. M. D.
 MIAMI DADE (26 WELLS)
 LOCATION AND ELEVATION (NAVD-88)
 OF USGS WELL 6-3355

STA	BS	DIST	HI	FS	DIST
			12.041		
TP N. 6				4.566	270.00
SHAKE	4.023	276.40	11.498		
TP N. 7				4.951	284.70
SHAKE	3.405	266.00	9.952		
TP N. 8				3.574	209.233
SHAKE	4.871	266.30	9.78 11.249		
TP N. 9				4.842	266.50
SHAKE	5.03	272.90	9.968 11.437		
TP N. 10				6.324	272.70
SHAKE	4.120	267.30	7.764 9.233		
TP N. 11				4.795	263.00
SHAKE	4.507	254.70	7.476 8.945		

2995.19

ELEVATION	BM ELEV.	DESCRIPTION
7.475		SET CUT NL $\frac{1}{2}$ TT, $\pm 1'$ NORTH OF THE SOUTH EP OF SW 376 ST, $\pm 540.5'$ EAST FROM TP N. 5.
6.547		SET CUT NL $\frac{1}{2}$ TT, $\pm 1'$ NORTH OF THE SOUTH EP OF SW 376 ST, \pm EAST FROM TP N. 6
4.909 6.318		SET CUT NL $\frac{1}{2}$ TT, $\pm 1'$ EAST OF THE WEST EP OF THE SW 192 AVE, $\pm 510'$ SOUTH FROM C/L OF THE SW 376 ST.
4.938 6.407		SET CUT NL $\frac{1}{2}$ TT, $\pm 1'$ EAST OF THE WEST EP OF THE SW 192 AVE, $\pm 532.80'$ SOUTH FROM TP N. 8
3.644 5.113		SET CUT NL $\frac{1}{2}$ TT, $\pm 1'$ EAST OF THE WEST EP OF SW 192 AVE, $\pm 545.60'$ SOUTH FROM TP N. 9
2.969 4.438		SET CUT NL $\frac{1}{2}$ TT, $\pm 1'$ EAST OF THE WEST EP

O. LONA
 L. BALLESTEROS
 A. LEAL
 4-02-19
 86445 0115

BEC # 03-86445
 S. F. W. M. D.
 MIAMI DADE (26 WELLS)
 LOCATION & ELEVATIONS (NAVD-88)
 OF USGS WELL G.3355

STA	BS	DIST	HI	FS	DIST
TP N. 12			$\frac{7476}{8.945}$	4.107	254.50
SHAKE	4.977	244.90	$\frac{8346}{9.815}$		
TP N. 13				5.003	245.00
SHAKE	4.482	255.10	$\frac{7825}{9.294}$		
TP N. 14				4.625	255.60
SHAKE	4.777	259.40	$\frac{7977}{9.446}$		
TP N. 15				5.026	259.00
SHAKE	5.144	255.90	$\frac{8.095}{9.564}$		
TP N. 16				4.962	256.30
SHAKE	$\frac{8029}{4.896}$	256.80	9.498		
TP N. 17				5.002	256.20
SHAKE	5.197	263.90	$\frac{8.224}{9.693}$		

2995-20

ELEVATION	BM ELEV.	DESCRIPTION
3369 4.838		END NEW LB 4207, ± 2' EAST FROM WEST EP OF SW 192 AVE, ± 509.20' SOUTH FROM TP 11 IN THE SW CORNER OF THE SW 192 AV / SW 384 ST
3343 4.812		SET CORNER $\frac{1}{2}$ TT, ± 1' EAST FROM WEST EP OF THE SW 192 AVE, ± 489.90' SOUTH FROM TP N. 12
320 4.669		SET CORNER $\frac{1}{2}$ TT, ± 1' EAST FROM WEST EP OF SW 192 AVE, ± 510.70' SOUTH FROM TP N. 13
2951 4.420		SET CORNER $\frac{1}{2}$ TT, ± 1' EAST FROM WEST EP OF THE SW 192 AVE, ± 518.40' FROM TP N. 14
3.133 4.602		SET CORNER $\frac{1}{2}$ TT, ± 1' EAST FROM WEST EP OF THE SW 192 AVE, ± 512.20' SOUTH FROM TP # 15
3.027 4.496		SET CORNER $\frac{1}{2}$ TT, ± 1' EAST FROM WEST EP OF THE SW 192 AVE, ± 513' SOUTH FROM TP N. 16

O. LUNA
L. BALLESTEROS
A. LEAL
4-02-19
86445 0115

BEL #03-86445
S. F. W. M. D
MIAMI DADE (26 WALLS)
LOCATION AND ELEVATIONS (NAVD-88)
OF USGS WELL 4-3355

STA	BS	DIST	HI	FD	DIST
			9.693 8.224		
TP No 18				4.994	260.40
SHAKE	4.417	270.20	7647 9.116		
TP No 19				5.392	270.40
SHAKE	5.215	268.00	747 8.939		
TP No 20				4.662	268.10
SHAKE	4.873	263.60	7681 9.150		
TP No 21				4.577	264.60
SHAKE	3.968	271.70	7072 8.541		
TP No 22				5.070	271.90
SHAKE	5.395	263.50	7.397 8.866		
TP No 23				5.003	263.50
SHAKE	5.075	256.80	7469 8.938		

2995-21

ELEVATION	BM ELEV.	DESCRIPTION
323 4.699		SET CUT NL $\frac{1}{2}$ IT, $\pm 1'$ EAST FROM WEST EP OF THE SW 192 AVE, $\pm 524.3'$ SOUTH FROM TP 17
2.255 3.724		SET CUT NL $\frac{1}{2}$ IT, $\pm 1'$ EAST FROM WEST EP OF THE SW 192 AVE, $\pm 540.60'$ SOUTH FROM TP 18
2.808 4.277		SET CUT NL $\frac{1}{2}$ IT, $\pm 1'$ EAST FROM WEST EP OF THE SW 192 AVE, $\pm 536.10'$ SOUTH FROM TP 19
3.104 4.573		SET CUT NL $\frac{1}{2}$ IT, $\pm 1'$ EAST FROM WEST EP OF SW 192 AVE, $\pm 528.20'$ SOUTH FROM TP 20
2.002 3.471		SET CUT NL $\frac{1}{2}$ IT, $\pm 1'$ EAST OF THE WEST EP OF THE SW 192 AVE, $\pm 543.60'$ SOUTH FROM TP 21
2394 3.863		SET CUT NL $\frac{1}{2}$ IT, $\pm 1'$ EAST OF THE WEST EP OF SW 192 AVE, $\pm 527'$ SOUTH OF THE TP # 22

O. LUNA
 L. BALLESTEROS
 A. LEAL
 4-02-19
 864450415

BEC #03-86445
 S. F. W. M. D.
 MIAMI DADE (26 WELLS)
 LOCATION AND ELEVATION (NAVD-88)
 OF THE USGS WELL G-3355

STA	BS	DIST	HL	FS	DIST
TP N. 24			7.469 8.938	5.108	257.50
SHAKE	5.036	149.80	7.397 8.866		
CP N. 3				4.271	62.25
SHAKE	4.762	70.60	7.888 9.357		
CP N. 2				4.475	85.200
SHAKE	8.038 4.625	187.50	9.507		
TP # 27				5.792	186.50
SHAKE	5.236	261.60	7.482 8.951		
TP # 28				5.262	261.50
SHAKE	5.065	253.10	7.285 8.754		
TP N. 29				4.980	253.10

CONTINUE NEXT PAGE (N. 23)

2995-22

ELEVATION	BM ELEV.	DESCRIPTION
2361 3.830		SET CUT NL 1/4 TT
3.126 4.895		SET MNLW BEC 0129
3413 4.882		SET IRC BEC 0129
2246 3.715		SET CUT NL 1/4 TT 1' ± WEST OF THE EAST EP OF SW 192 AV; ± 374'
2220 3.689		SET CUT NL 1/4 TT, ± 1' WEST OF THE EAST EP OF SW 192 AV, ± 523.10' NORTH OF THE TP 27
2305 3.774		SET CUT NL 1/4 TT

O. LUNA
 L. BALLESTEROS
 A. LEAL
 4-03-19
 86445 0415

BEL #03-86445
 S. F. W. M. D.
 MIAMI DADE (26 WELLS)
 LOCATION AND ELEVATIONS (NAVD-88)
 OF USGS WELL G-3355

STA	BS	DIST	HI	FS	DIST
TP N. 29	4.996	262.40	8.77 7301		
TP N. 30				4.004	262.00
SHAKE	4.158	258.30	7.455 8.924		
TP N. 31				4.672	258.20
SHAKE	4.786	248.60	7.57 9.038		
TP N. 32				5.061 5.189	254.90
SHAKE	5.240	262.90	7.749 9.088		
TP N. 33				4.390	262.90
SHAKE	4.696	286.50	8.055 9.394		
TP N. 34				5.140	286.50
SHAKE	4.894	269.70	7.809 9.148		
TP N. 35				4.785	269.60

ELEVATION	BM ELEV.	DESCRIPTION
3.297 4.766	3.174 2305	SET CUTNL } TT, ± 1' WEST OF THE EAST EP OF SW 192 AVE, ± 522.4' NORTH FROM TP N. 29
2.784 4.252		SET CUTNL } TT, ± 1' WEST OF THE EAST EP OF SW 192 ST, ± 516.50' NORTH FROM TP N. 30
(3.977) 2.509 3.848 2.381		SET CUTNL } TT, ± 1' WEST OF THE EAST EP OF SW 192 ST, ± 503.60' NORTH FROM TP N. 31
3.359 4.698		SET CUTNL } TT, ± 1' WEST OF THE EAST EP OF SW 192 ST, ± 525.80' NORTH FROM TP N. 32
2.915 4.254		SET CUTNL } TT, ± 1' WEST OF THE EAST EP OF SW 192 ST, ± 573.0' NORTH FROM TP N. 31
3.024 4.263		SET CUTNL } TT

O. LUNA
L. BALESTEROS
A. LEAL
4-03-19
86445015

DEZ #03-86445
S. F. W. M. D.
MIAMI DADE (2G WELLS)
LOCATION AND ELEVATION (NAVD-88)
OF USGS WELL G-3355

STA	BS	DIST	HI	FS	DIST
TP N. 35	4.729	266.80	9.092 7.753		
TP N. 36				4.923	266.30
SHAKE	4.922	271.80	9.691 7.752		
TP N. 37				4.828	271.90
SHAKE	5.127	266.50	8.051 9.390		
TP N. 38				4.982	266.40
SHAKE	4.776	269.40	7.845 9.184		
TP N. 39				4.955	269.90
SHAKE	5.069	269.30	7.959 9.298		
TP N. 40				4.678	270.30
SHAKE	5.041	273.10	8.322 9.661		
TP N. 41				3.911	273.50

2995-24

ELEVATION	BM ELEV.	DESCRIPTION
	4.363 3.024	
4.169 2.83		SET CUTNL 1/2 TT, ± 1' WEST OF THE EAST EP OF SW 192 AVENUE, ± 533.10 NORTH FROM TP N. 35
2924 4.263		SET CUTNL 1/2 TT, ± 1' WEST OF THE EAST EP OF SW 192 AV., ± 543.7' NORTH FROM TP N. 36
3069 4.408		SET CUT NL 1/2 TT, ± 1' WEST OF THE EAST EP OF SW 192 AV., ± 532.9' NORTH FROM TP N. 37
2.89 4.229		SET CUT NL 1/2 TT, ± 1' WEST OF THE EAST EP OF SW 192 AV. ± 539.30 NORTH OF TP N. 38
3.281 4.620		SET CUTNL 1/2 TT, ± 1' WEST OF THE EAST EP OF SW 192 AV., ± 539.6' NORTH OF THE TP 39
4.411 5.756		SET CUTNL 1/2 TT, ± 1' WEST OF THE EAST EP OF SW 192 AVE., ± 546.60' NORTH OF THE TP N. 40

O. LUNA
 L. BALLESTEROS
 A. LEAL
 4-03-19
 86445015

BEC # 03-86445
 S. F. W. M. D.
 MIAMI DADE (26 WELLS)
 LOCATION AND ELEVATIONS (NAVD-88)
 OF USGS WELL G-3355

STA	BS	DIST	HI	FS	DIST
TP N. 41	5.271	284.10	11.021 9.682		
TP N. 42				4.770	285.00
SHAKE	4.841	270.80	9.793 11.092		
TP N. 43				4.784	270.70
SHAKE	4.681	105.60	9.65		
BM C-432 NAVD88				2.547	111.933

2995-28

ELEVATION	BM ELEV.	DESCRIPTION
5.751 4.912	5.750 4.411	
6.251 4.912		SET CUT NL $\frac{1}{2}$ IT, \pm 1' WEST OF THE EAST EP OF SW 192 AVE, \pm 569.1 NORTH OF THE TP N. 41
4.969 6.308		SET CUT NL $\frac{1}{2}$ IT
7.103	7.08	SW 192 AVE --- 98.9' SOUTH OF C/L SW 376 ST. --- 29.9' WEST OF C/L BRASS DISC IN CONC MON. STAMPED C432 1994 EL = 7.08 NAVD-88
EXCEL 7.0.023		

$$\frac{21979.916}{5280} \text{ LF} = 4.163$$

$$\frac{0.02}{\sqrt{4.163}} = \underline{0.0408}$$

O. LUNA.
L. BALLESTERO
A. LEAL
4-03-19

BEL #03-86445
S.F.W.M.D.
MIAMI DADE (26 WELLS)
LOCATION & ELEVATION (NAVD-88)
OF USGS WELL G-3355

SET	BS	DIST.	HZ	FS	DIST
*TP N. 31	4.578	241.80	8.830 7.362		
TP N. 32				4.853	256.50
*TP N. 7	3.181	297.20	9.728		
TP N. 8				4.819	228.50
*TP N. 43	4.681	105.60	9.655		
BM C-432				2.547	111.933

2995-26

ELEVATION	BM	ELEV.	DESCRIPTION
4.252 2.784			JET CUTNL } TT, SEE PAGE N. 23 ELEV 4.252 NAVD-88
3.971 2.509			CHECK ELEVATION (WAS 3.848 NAVD-88) SEE PAGE N. 23
		6.547	SET CUTNL } TT, SEE PAGE N. 19 ELEV = 6.547 NAVD-88
4.909		6.378	SET CUTNL } TT, CHECK ELEVATION WAS 6.378 NAVD-88 (SEE PAGE N. 19)
			ERROR = -1.469
		4.974	SET CUTNL } TT, SEE PAGE N. 25 WAS ELEV 6.308, NOW 4.974 NAVD-88
7.108		7.08	
			ERROR = +0.028

O. LUNA
L. BALLESTEROS
A. LEAL
4-03-19
86445 LIS
TOPCON 30000748

BEC #03-86445
S. F. W. M. D.
MIAMI DADE (26 WELL)
LOCATION AND ELEVATION (NAVD-88)
OF USGS WELL C-3355.

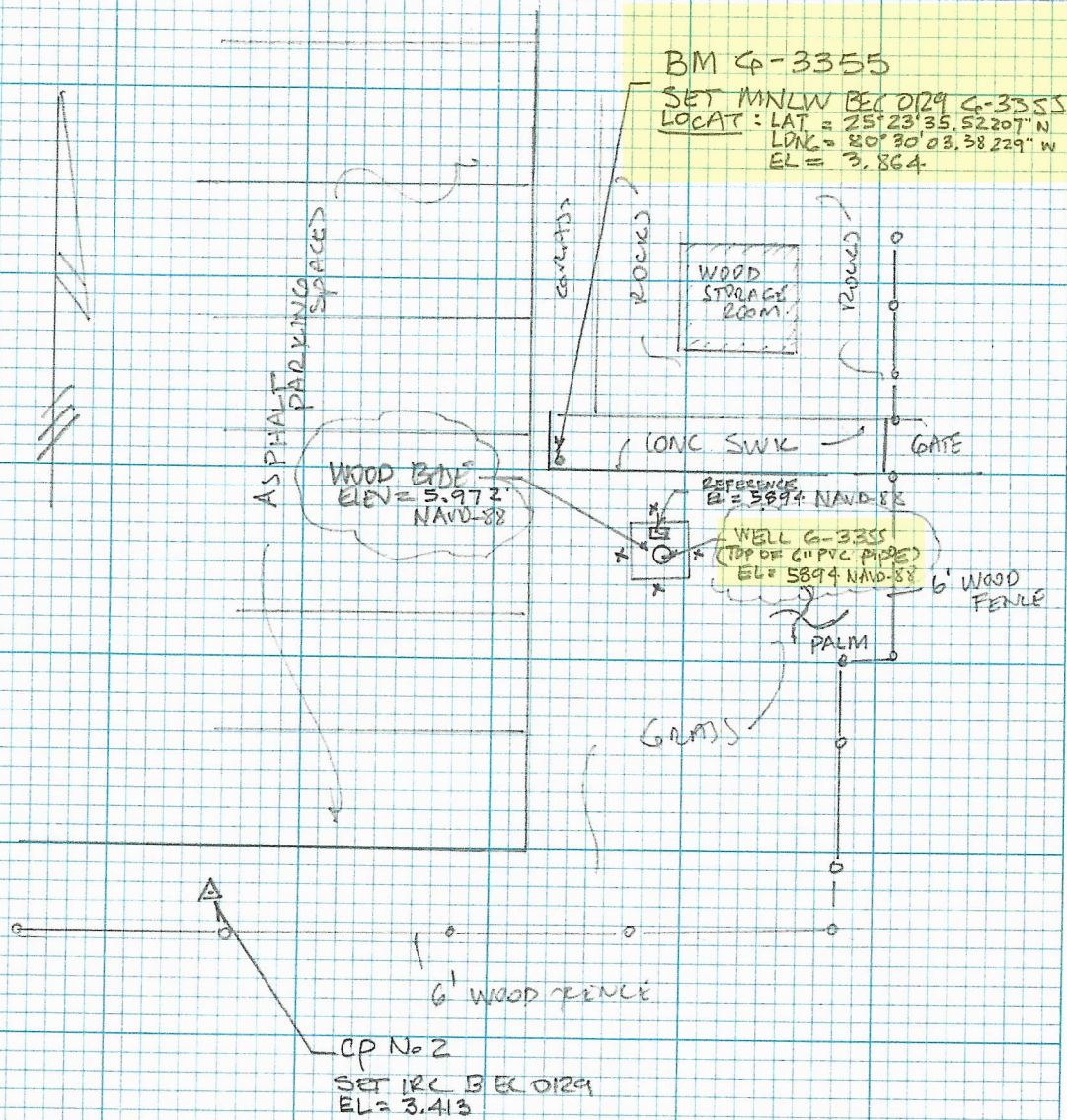
INST @ CP N=2 (400-427)
HX=5.275

STA	TH	HORIZ \angle	VERT \angle	SLOPE DIST	DESC.
400 = 3	4.73	00°00'00"	90°18'22"	153.22	MNLW 0129
401 = 1	4.73	46°14'47"	90°06'37"	36.94	MNLW 0129

2995-27

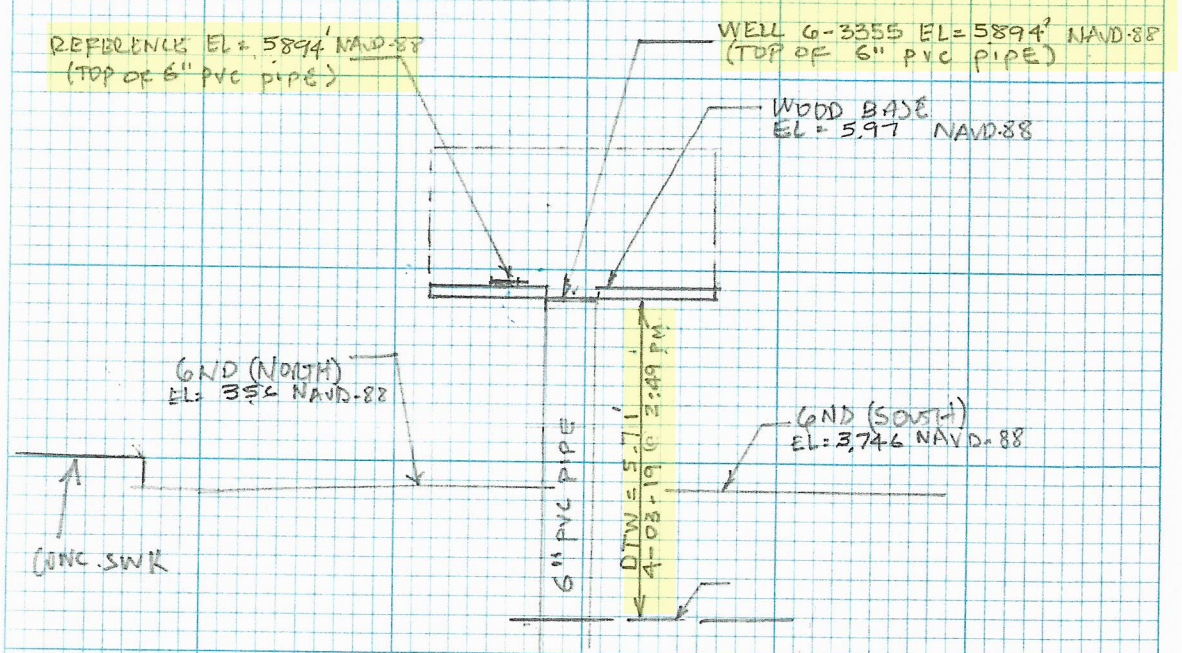
O. LUNA
 L. BALLESTEROS
 A. LEAL
 4-03-19

BEC #08-86445
 S. F. W. M. D.
 MIAMI DADE (26 WELL)
 LOCATION OF USGS WELL G-3355
 ELEVATION (NAVD-88)



2995-28

WELL G-3355
 LOCATION
 LAT = 25°23'35.49168" N
 LONG = 80°30'03.30708" W
 ELEV = 5.894' NAVD-88 (TOP OF PIPE)



O. LUNA
 L. BALLESTEROS
 A. LEAL
 4-03-19
 86445 OLIS

BEC # 03-86445
 S. F. W. M. D.
 MIAMI DADE (26 WELLS)
 LOCATION $\frac{1}{3}$ ELEVATIONS (NAVD-88)
 OF WELL 4-3355

STA	BS	DIST	HI	FS	DIST
CP N. 3	5.152	136.20	8.278		
100				2.306	23.60
101				2.384	24.10
BM #1				4.414	19.20
SHALE	4.560	19.40	8.424		
CP N. 2				5.020	19.50

BM #1

BM G-3355

ELEVATION	BM ELEV.	DESCRIPTION
	3.126	SET MNLW BEZ 0129 4-3355 SEE PAGE N. 22, ELEV = 3.126 NAVD-88
5.972		WOOD BASE
5.894		WELL 4-3355 (TOP OF PIPE, $\phi 6"$)
3.864		SET MNLW BEZ 0129 4-3355 ON CONC SIDEWALK
3.404	3.413	SET IRL BEZ 0129 SEE PAGE N. 22, ELEV = 3.413 NAVD-88

Survey Control Points

Horizontal



+

Find address or place

About


C 432 - NEW

Name: C 432

Elev(NGVD29): 8.59
Elev(NAVD88): 7.08
Northing: 394,535.59
Easting: 820,723.74

Location1: SW 376 ST --- 103' SOUTH OF C/L
Location2: SW 192 AVE --- 31' WEST OF CA
Location3: 5' SE OF SE CORNER OF ANGLED FENCE
Description1: BRASS DISK IN CONCRETE MONUMENT
Description2:

Field Book: NGS-32
Zones:
Circuit:
Set Date: 08-19-2007
Locator: 8810 NW
Last Check: 02-16-2012
Adjustment:
Adjustment-Date: 03-09-2011
Status: NEW



Public Works Survey Control Point

Welcome to Miami-Dade County Survey Control Points.

Public Works Survey Control Points is an Web Application that displays the Horizontal and Vertical Control Points layers as well as street maintenance layer and Municipality for Miami-Dade County. It is being used by Public Works Department in Miami-Dade County.

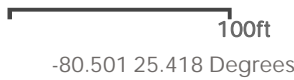
The information available in this search has been assembled for the use of Miami-Dade County Public Works for the design and development of Public Works projects. No degree or order of accuracy has been assigned to data in this package unless specifically stated.

Although this package has been prepared from the best available information, Miami-Dade County assumes no responsibility for the accuracy or completeness of the information or any errors or omission and makes no warranties, expressed or implied, concerning accuracy, completeness, reliability or suitability of this data.

This data should not be relied upon as the sole basis for solving a problem whose incorrect solution could result in injury to person or property. Elevations must be verified consistent with procedures established by Chapter 472 Florida Statutes "Land Surveying and Mapping" and the Florida Administrative Code Chapter 61G17-6 "Minimum Technical Standards".

Some of the GIS datasets presented in this website are available for free download. Please visit our [Open Data](#) website for more information.

For questions, comments or to report a problem with this website, please email [Miami-Dade County GIS](#).



Survey Control Points

Horizontal



D 432 - NEW

Name: D 432

Elev(NGVD29): 10.01
 Elev(NAVD88): 8.50
 Northing: 394,774.07
 Easting: 817,143.91

Location1: SW 376 ST --- 162' NORTH OF C/L EXTENDED WEST
Location2: SW 198 AVE --- 264' WEST OF C/L
Location3: 109' SOUTH OF BENITO JUAREZ PARK GAZEBO
Description1: BRASS DISC IN CONCRETE SIDEWALK, 140' WEST OF WEST EDGE OF PARKING LOT.
Description2:

Field Book: NGS-31
 Zones:
 Circuit:
 Set Date: 08-19-2007
 Locator: 7820 W
 Last Check: 08-19-2007
 Adjustment:
 Adjustment-Date: 03-17-2011
 Status: NEW



Public Works Survey Control Point

Welcome to Miami-Dade County Survey Control Points.

Public Works Survey Control Points is an Web Application that displays the Horizontal and Vertical Control Points layers as well as street maintenance layer and Municipality for Miami-Dade County. It is being used by Public Works Department in Miami-Dade County.

The information available in this search has been assembled for the use of Miami-Dade County Public Works for the design and development of Public Works projects. No degree or order of accuracy has been assigned to data in this package unless specifically stated.

Although this package has been prepared from the best available information, Miami-Dade County assumes no responsibility for the accuracy or completeness of the information or any errors or omission and makes no warranties, expressed or implied, concerning accuracy, completeness, reliability or suitability of this data.

This data should not be relied upon as the sole basis for solving a problem whose incorrect solution could result in injury to person or property. Elevations must be verified consistent with procedures established by Chapter 472 Florida Statutes "Land Surveying and Mapping" and the Florida Administrative Code Chapter 61G17-6 "Minimum Technical Standards".

Some of the GIS datasets presented in this website are available for free download. Please visit our [Open Data](#) website for more information.

For questions, comments or to report a problem with this website, please email [Miami-Dade County GIS](#).

[Zoom to](#)

