



SURVEYOR'S REPORT

**Specific Purpose Survey of the
United States Geological Survey
Recorder Well G-968
in
Miami-Dade County, Florida**

Prepared for:

South Florida Water Management District

3301 Gun—Club Road
West Palm Beach, Florida 33406
Ph. (561) 686-8800 (ext. 2978)
Fax (561) 682-0066

Prepared by:

Mike Bartholomew, PSM, President
Florida Professional Surveyor and Mapper
License Number 5666
State of Florida

Biscayne Engineering Company, Inc. LB No 0129
529 West Flagler Street, Miami, FL. 33130
Tel (305) 324-7671

Field Date: April 18, 2019
Report Date: May 7, 2019
BEC Order #: 03-86445

INSPIRED BEYOND MEASURE • SINCE 1898

**CORPORATE
HEADQUARTERS**
529 West Flagler Street,
Miami, FL 33130
Tel. 305.324.7671
Fax 305.324.0809

www.BiscayneEngineering.com
info@BiscayneEngineering.com

**PALM BEACH
BRANCH**
449 NW 35th Street,
Boca Raton, FL 33431
Tel. 561.603.2329
Fax 561.609.2317

TABLE OF CONTENTS

Title	Page
Cover Sheet	1
Table of Contents	2
Purpose	3
Location of Project	3
Surveyor's Report	4
Project Datum's	4
Leveling and GPS Methods	4
Equipment used	4
Vertical Control Points	5 & 6
Benchmarks summary	5 & 6
Field Notes	6
Project Results	7
Surveyor's Notes	9
Surveyor's Certificate	10
SFWMD Site Form	11

SURVEYOR'S REPORT

PURPOSE

The purpose of this survey is to set an Elevation Reference Mark (Benchmark) consisting of a SFWMD aluminum disc in concrete and to establish a North American Vertical Datum of 1988 (NAVD 88) elevation on said Benchmark and on an additional Reference Point with a Brass plate, both at United States Geological Survey Well **G-968**.

LOCATION OF PROJECT

The United States Geological Survey's Recorder Well **G-968** is located in Section 9, Township 52 South, Range 39 East, Miami-Dade County, Florida.



General Location (Intended Display scale is "Not to Scale")

PROJECT VERTICAL DATUM

SURVEYOR'S REPORT

The project vertical datum is the North American Vertical Datum (NAVD) of 1988.

To convert the NAVD 88 elevation to the National Geodetic Vertical Datum of 1929 at station **G-968 add 1.54'**. These values are based on Corpscon 6.0.1 a US. Army Corps of Engineers Engineering Research and Development Center Topographic Engineering Center Alexandria, Virginia Windows-based program to convert coordinates and elevations between datum's using vertcon05.txt and vertcon05.05 files supplied by the US. Army Corps of Engineers South Atlantic Division, Jacksonville Fl.

PROJECT HORIZONTAL DATUM

The project horizontal datum is the North American Datum 83 (NAD 83(2011)) (EPOCH:2010.0000).

LEVELING METHODS

The leveling for this project was performed in accordance with standard survey practice using conventional third order methods, techniques and equipment.

The allowable error (.05 $\sqrt{\text{miles}}$) on this project meets or exceeds third order closures as required by SFWMD for this project per executed SOW for 4600003705-WO04 and discussions with SFWMD.

A level loop was run from the NGS Benchmark control point B 503, PID AJ8355, through the well site, and to the same NGS Benchmark B 503. The measurements were collected using a Digital Level and were hand written in Biscayne Engineering Co, Inc. Field Book 2995 pages 16-17, dated April 01, 2019, reduced and adjusted electronically. Additional data was manually recorded in the field book.

GPS METHODS

Latitude and Longitude for Benchmark G-968 were established by observing a 3-minute session of GPS data on April 18, 2019, using a Trimble R-10 and The Florida Permanent Reference Network (FPRN). The FPRN network consists of nearly 100 Continuously Operating Reference Stations (CORS) located throughout Florida.


EQUIPMENT USED

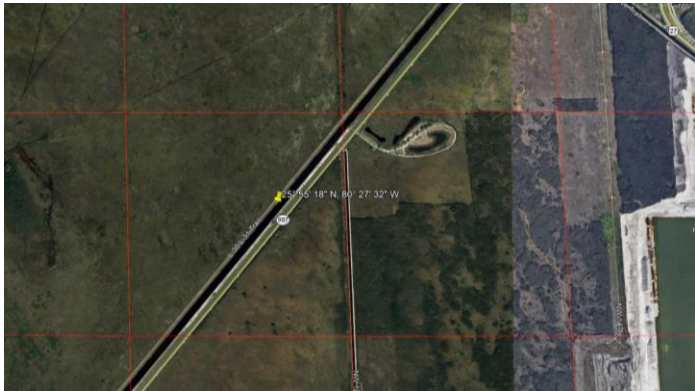
- Trimble GPS unit R-10, Serial Number 5625R066118.
- TOPCON DL-502 digital level Serial Number 512386 and a folding bar code rod.
- TOPCON Total Station ES 103, Serial Number ZQ000748.
- TOPCON Auto-level DL-502, Serial Number 512386.

VERTICAL CONTROL POINT

SURVEYOR'S REPORT


The Vertical Control point utilized and set as part of this survey is the:

NGS BM B 503						
25° 55' 59.00" (N)	80° 26' 56.00" (W)	Published	17.47 ft.	(NAVD88)	5.32 m	Published
			<p>THE MARK IS ABOUT 10.0 MI (16.1 KM) NORTHWEST OF HIALEAH, 24.0 MI (38.6 KM) NORTH-NORTHWEST OF MIAMI, 32.0 MI (51.5 KM) NORTH OF HOMESTEAD, IN SECTION 9, TOWNSHIP 52 SOUTH, RANGE 39 EAST.</p> <p>SURVEY DISK SET IN TOP OF CONCRETE MONUMENT STAMPING: B 503 2000</p>			

NGS BM C 503						
25° 55' 18" (N)	80° 27' 32" (W)		18.03 ft.	(NAVD88)	5.49 m	Published
Per NGS Datasheet						
			<p>SET IN TOP OF A ROUND CONCRETE MONUMENT RECESSED 0.4 FT BELOW THE LEVEL OF THE GROUND AND 0.6 FT BELOW THE LEVEL OF THE LEVEE ROAD. LOCATED 81.3 FT NORTHWEST OF A CARSONITE WITNESS POST, 19.7 FT SOUTHEAST OF A CARSONITE WITNESS POST, 7.0 FT NORTHWEST OF THE APPROXIMATE CENTERLINE OF THE LEVEE ROAD.</p>			

BM: G-968 (Set as part of this survey)						
25° 56' 07.26" (N)	80° 26' 49.02" (W)		10.03 ft.	(NAVD88)	3.06 m	Level run

SURVEYOR'S REPORT

NAD_83(2011)(EPOCH:2010.0000)	11.57 ft.	(NGVD29)	3.53 m	Converted
			1.54 ft. (conversion factor)	Corpscon 6.0.1
	<p>STATION IS A SFWMD ALUMINUM DISK IN CONCRETE (STAMPED "BM G-968")</p> <p>FROM THE INTERSECTION OF SW 177TH AVENUE WITH DANELL LANE, DRIVE 0.07 MILES NW, AND 0.65 MILES SW ON L-30/L-31 TRAIL. THE SURVEY MARKER IS SET WESTERLY OF THE TRAIL.</p>			

Field Book 2095, Page 49

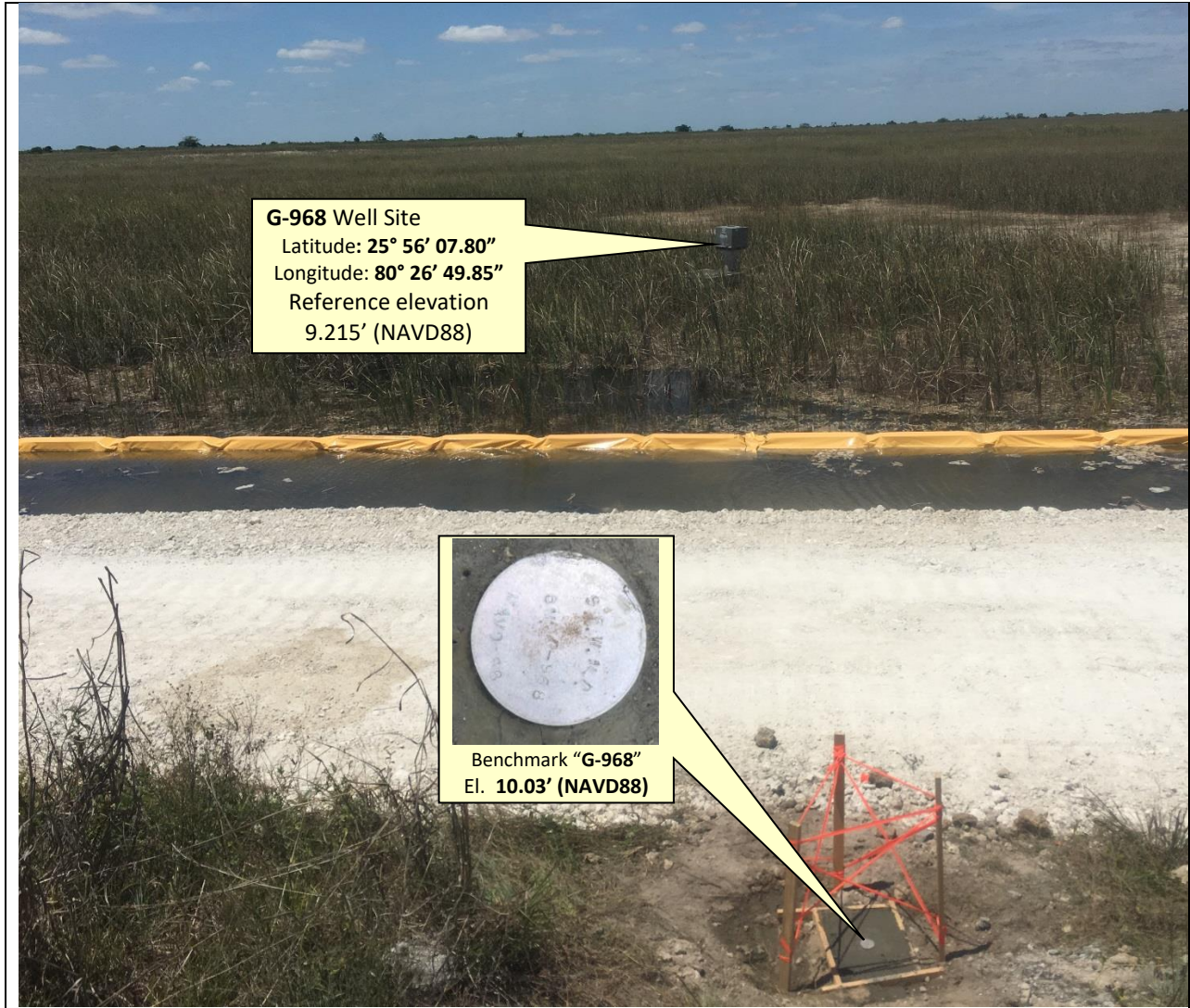
Q-LUNA 4 BAILEY STERS A-18-19 G-968-2 TOPCON PL 502						DEC #03: 86445 S. F. W. M. D. MIAMI DADE 26 WELLS LOCATION AND ELEVATIONS (NAVD=88) OF USGS WELL G-968						2995-49
STA	BS	DIST	HI	FS	DIST	ELEVATION	BM ELEVAT.	DESCRIPTION				
CP No 2	1.438	69.00	19.293 19.258				17.855 17.82	SET IRC BCL 02A, SEE PAGE N. 58				
CP N. 4 BM G-968				9.229	53.30	10.029		SET ALUM. DISK IN CONC. MON. STAMPED S.F.W.M.D. BM G-968 NAVD-88				
SHAPE	8.889	38.70	18.453 18.918									
CP N. 3					59.10		17.649 17.614	17.617 17.615	SET IRC BCL 02A, SEE PAGE N. 58 LOC = 17.617 NAVD-88 17.615			
* SEE PAGE N. 58 05-17-19												

BM G-968
ELEVATION: 10.03'
(NAVD88)

PROJECT RESULTS

SURVEYOR'S REPORT

Overall Site



Looking Northwesterly (oblique not to scale)

SURVEYOR'S REPORT


Tabular Form

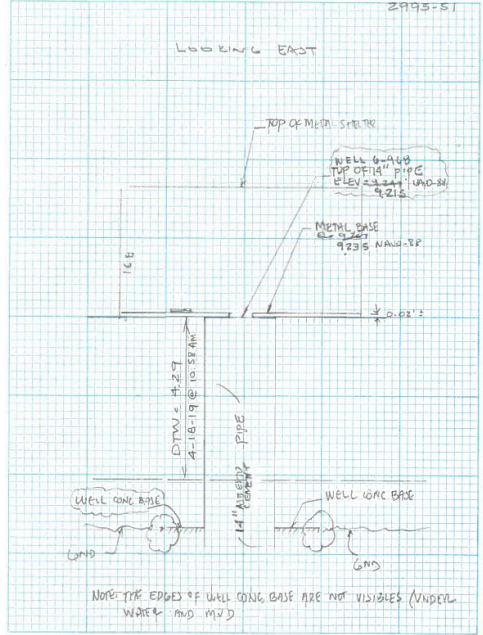
Reference and Ground Elevations: NAVD88			
Well	Ground Elevation	Reference Elevation	Comments
G-968	3.5 ft.	9.215 ft.	Top of 14" CONCRETE PIPE
Offset to NGVD29: +1.54' (See Project Vertical Datum Notes in Page: 4)			
Well diameter		Casing material	DTW
14"		METAL	4.29 ft (04/18/19 at 10:58 am)

USGS Published: (Per USGS Report Site #: 255600080270001 G-968) Datum Not Reported			
Well	Ground Elevation	Reference Elevation	Comments
G-968	-	10.87 ft.	Top of base

Source & Site Benchmark	NAVD88	NGVD29 (Published)	NGVD29 (Corpscon)
B 503 (NGS)	17.47 ft. (Published)		
C 503 (NGS)	18.03 ft. (Published)		
G-968 (SFWMD)	10.03 ft. (Measured)		11.60 ft. (Converted)

Well Photos and Diagrams

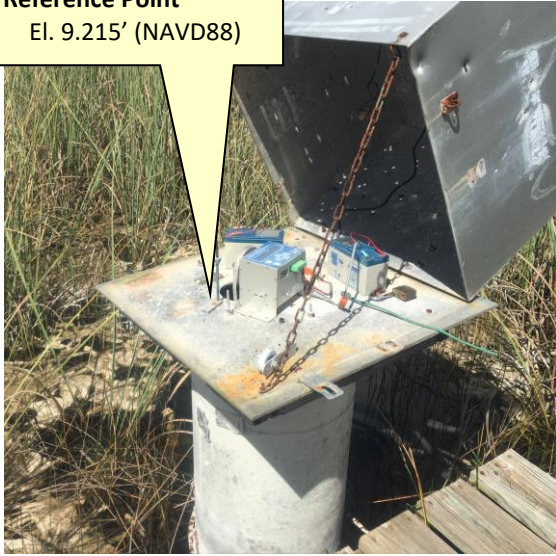




SURVEYOR'S REPORT

Well Photos and Diagrams (Continued)

Reference Point
El. 9.215' (NAVD88)



Side view (Oblique Not to scale)



Top view (Not to scale)

Surveyor's Notes:

1. All measurements herein are in United States Survey feet and decimal thereof, unless otherwise specified.
2. Underground utilities were not located as part of this survey.
3. This survey report or copies thereof are not valid without the original signature and seal of a Florida licensed Surveyor and Mapper.
4. Additions or deletions to this survey report by other than the signing party (or parties) is prohibited without written consent of the signing party (or parties).
5. To convert from NAVD 88 to NGVD 29 add 1.54 feet. This value is based on Corpscon 6.0.1 a U.S. Army Corps of Engineers Engineering Research and Development Center Topographic Engineering Center Alexandria, Virginia Windows-based program to convert coordinates and elevations between datum's using vertcon05.txt and vertcon05.05 files supplied by the U.S. Army Corps of Engineers South Atlantic Division, Jacksonville Fl.
6. Date of last field work: April 18, 2019, BEC job No. 03-86445.
7. SFWMD Data records (on file at the District's headquarters):
 - A. Electronic Data files:
 - Miscellaneous picture files
 - B. Conventional reporting
 - Field Book: 2995 pages 16-17, 48-52

SURVEYOR'S REPORT

Abbreviations:

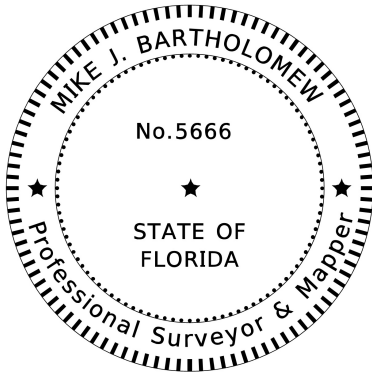
- EI.** - Elevation
- DTW** - Distance to the water table inside the well
- M-DC** - Miami-Dade County
- NAVD88** - North American Vertical Datum of 1988
- NGVD29** - National Geodetic Vertical Datum of 1929
- NGS** - National Geodetic Survey
- PSM** - Professional Surveyor & Mapper
- PID** - Permanent Identifiers
- SFWMD** - South Florida Water Management District
- USGS** - United States Geological Survey
- BEC** - Biscayne Engineering Company, Inc.

SURVEYOR'S CERTIFICATION

In my professional opinion this Specific Purpose Survey meets applicable portions of the Standards of Practice set forth by the Florida Board of Professional Surveyors and Mappers in Chapter 5J-17, Florida Administrative Code. This report is prepared for the sole and specific use of the South Florida Water Management District and is not assignable.

Last date of Survey
April 18, 2019

Mike Bartholomew, PSM, President
Florida Professional Surveyor and Mapper
License Number 5666
State of Florida
Biscayne Engineering Company, Inc. LB No 0129
529 West Flagler Street, Miami, FL. 33130
Tel (305) 324-7671





SOUTH FLORIDA WATER MANAGEMENT DISTRICT

Rev. 4/18

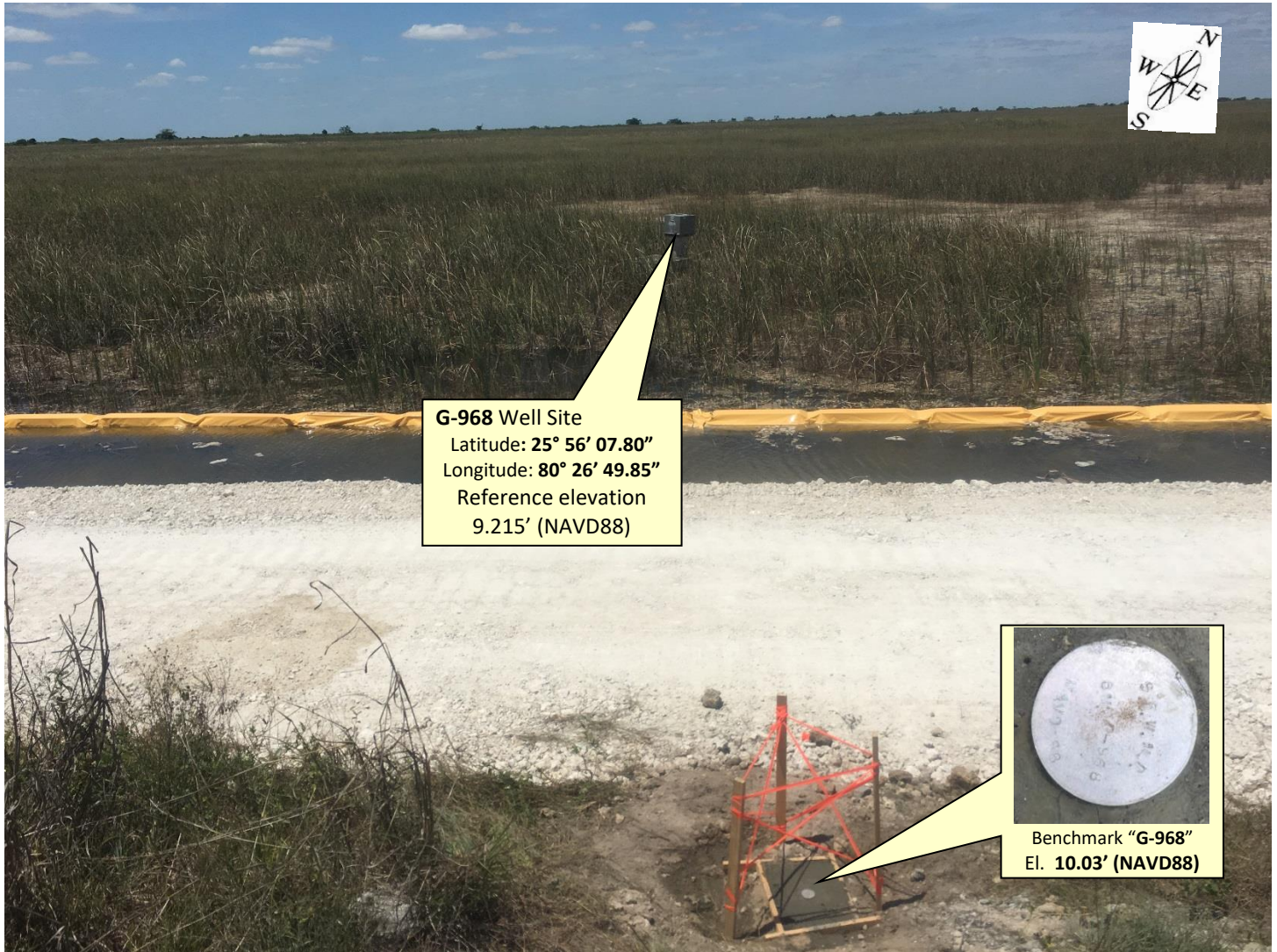
DESIGNATION: G-968		PROJECT: G-968	
ESTABLISHED BY: SOUTH FLORIDA WATER MANAGEMENT DISTRICT		SURVEYOR: Mike Bartholomew	
RECOVERED BY: BISCAYNE ENGINEERING CO.		DATE: 04/18/19	
GEOGRAPHIC POSITION			
SECTION 9	TOWNSHIP 52 SOUTH	RANGE 39 EAST	
COUNTY: MIAMI-DADE	NAME OF QUADRANGLE: PENNSUCO GEOGRAPHIC INDEX OF QUAD:		
HORIZONTAL DATUM: 1927 (1983) 2022 Other ____ (circle one) ZONE (E) or W			
VERTICAL DATUM: MSL 1929 (1988) 2022 Other ____ (circle one)			
VERTICAL ACCURACY: 1 2 (3)			
STATE PLANE COORDINATE	(N) Y= 582576.79	(E) X= 837917.41	NAVD 88 EL. 10.03' NGVD 29 EL. 11.57'
CORPSCON 6.0.1 CONVERSION FACTOR (NAVD88 TO NGVD29): (A U.S. Army Corps of Engineers Engineering Research and Development Center Topographic Engineering Center Alexandria, Virginia Windows-based program to convert coordinates and elevations between datum's using vertcon05.txt and vertcon05.05 files supplied by the U.S. Army Corps of Engineers South Atlantic Division, Jacksonville FL.) ACTUAL NGS or (ngvd29.txt file) OPUS Ortho Height			
LATITUDE: 25 ° 56' 07.26 " (N)		LONGITUDE: 80 ° 26' 49.02" (W) (Source) GPS RTK (FPRN)	
RECOVERY DATA			
Stamping: S.F.W.M.D. BM G-968			
To Reach: FROM THE INTERSECTION OF SW 177TH AVENUE WITH DANELL LANE, DRIVE 0.07 MILES NW, AND 0.65 MILES SW ON L-30/L-31 TRAIL. THE SURVEY MARKER IS SET WESTERLY OF THE TRAIL.			
NOTABLE LAND MARKS: SW 177 TH AVENUE			
NGS-SOURCE BENCHMARK: B 503			
FIELD BOOK PAGE <u>2995-49</u>			
PICTURES			
Aerial Overall Site			
NOT TO SCALE (Google Earth product)			



SOUTH FLORIDA WATER MANAGEMENT DISTRICT

Rev. 4/18

Overall Site



G-968 Well Site
Latitude: 25° 56' 07.80"
Longitude: 80° 26' 49.85"
Reference elevation
9.215' (NAVD88)

Benchmark "G-968"
El. 10.03' (NAVD88)

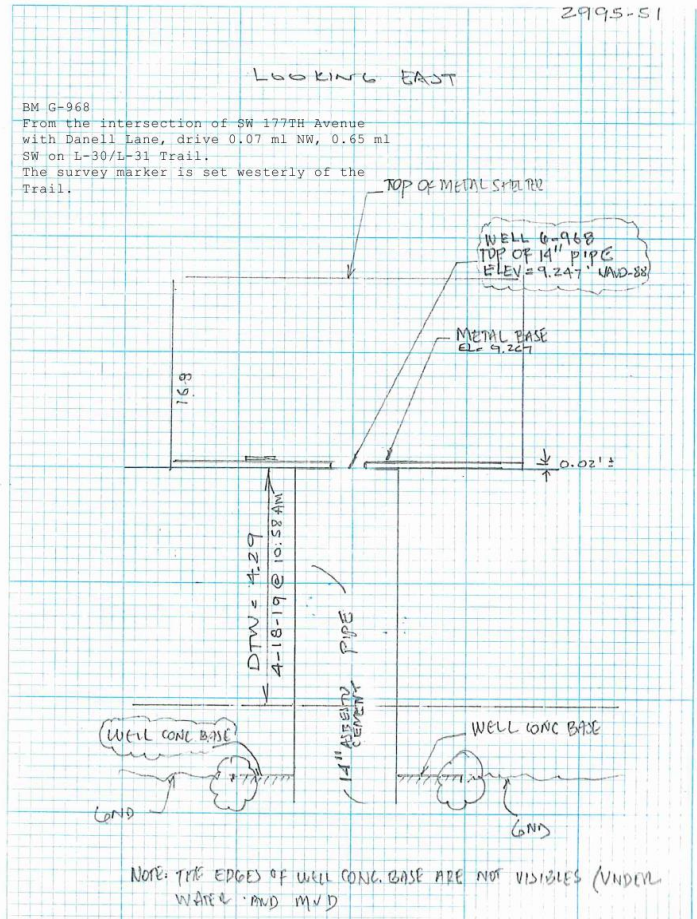
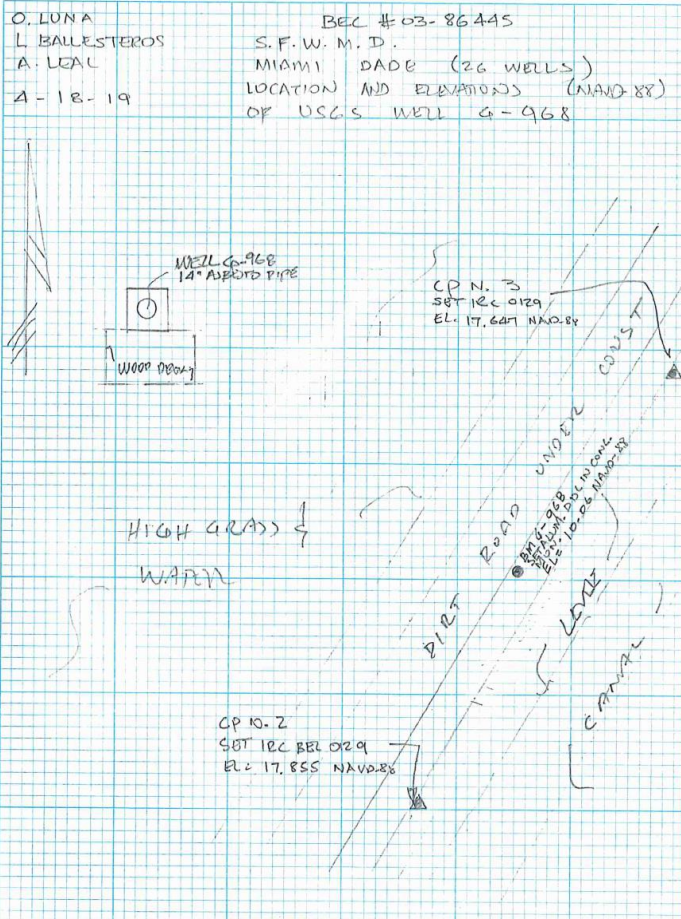
Looking Northwesterly (oblique not to scale)



SOUTH FLORIDA WATER MANAGEMENT DISTRICT

Rev. 4/18

SKETCH



Office

Project

13 May 2019

INPUT

Geographic, NAD83
Vertical - NAVD88, U.S. Feet

OUTPUT

Geographic, NAD83
Vertical - NGVD29 (Vertcon94), U.S. Feet

BM G-968

1/1

Latitude: 25 56 07.26
Longitude: 80 26 49.02
Elevation/Z: 10.06

Latitude: 25 56 07.26000
Longitude: 80 26 49.02000
Elevation/Z: 11.599

Remark:

Office

Project

13 May 2019

INPUT

Geographic, NAD83
Vertical - NAVD88, U.S. Feet

OUTPUT

Geographic, NAD83
Vertical - NGVD29 (Vertcon94), U.S. Feet

WELL G968

1/1

Latitude: 25 56 07.80
Longitude: 80 26 49.85
Elevation/Z: 9.25

Latitude: 25 56 07.80000
Longitude: 80 26 49.85000
Elevation/Z: 10.789

Remark:

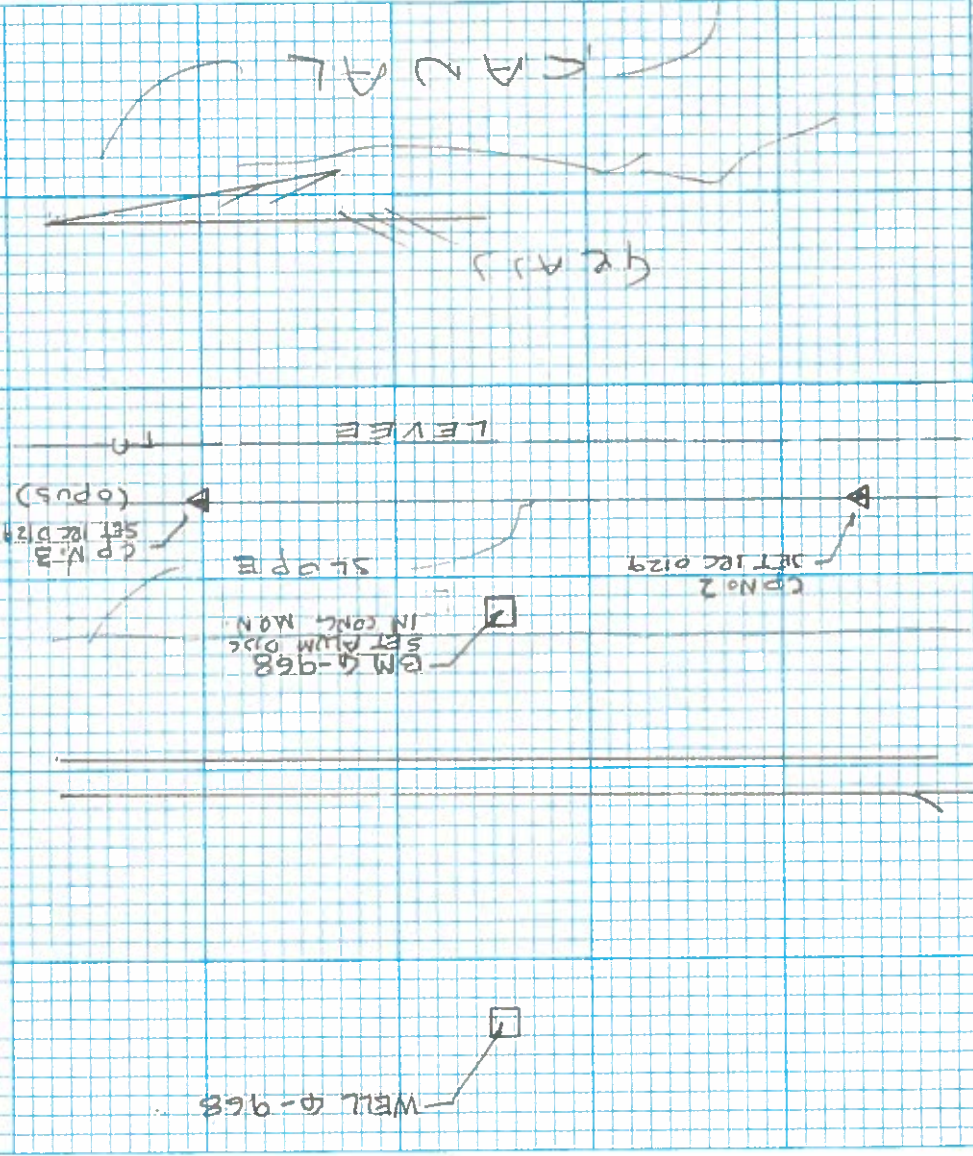
O. LUNA
L. BALLESTEROS
A. HEAL
4-17-19
86445

BEC #03-86445
S.F.W.M.D.
MIAMI DADE (26 WELLS)
LOCATION AND ELEVATION (NAVD-88)
OF USGS WELL 26-9168

1. CP N. 3 → SET REC BEL 0129, LOCATED ON WEST SIDE OF THE
LEVEE. (REF. SEE PAGE N. 16)

INST: (GPS TOPCON IPER V)

START → 11:45 AM
END → 13:50 PM
HTK = 5:44' FT



Q. LUNA
 4 BAILESTROS
 A. LEPL
 4-18-19
 9968-2
 TOPCON DL 502

REC #03-86445
 S. F. W. M. D.
 MIAMI DADE 26 WELLS
 LOCATION AND ELEVATIONS (NAVD = 88)
 OF USGS WELL 6-968

SITA	BS	PIST	HI	FS	PIST
CP No 2	1.438	69.00	19.293 19.258	9.229	53.30
CP No 4 = BM G-968		38.70	18.953 18.918		
CP No 3				1.304	39.10

* SEE PAGE N. 58 FOR NEW ELEVATIONS.
 05-17-19

2993-49

ELEVATION	BM ELEVAT.	DESCRIPTION
19.66 10.029	17.855 17.82	SET IRK BELL 0129, SEE PAGE N. 1/6 58 ELEV = 17.855 NAVD = 88
		SET ALUM. PIPE IN CONC. MONI. STAMPED S.F. W. M. D. B.M. G-968 NAVD = 88
17.649 17.614	17.617 17.615	SET IRK BELL 0129, SEE PAGE 1/6 58 ELEV = 17.617 NAVD = 88 17.615

O. LUNA
 I. BALLESTEROS
 A. LEAL
 A=1B-19

BEC # 03-86445
 S. F. W. M. D.
 MIAMI DADE CO WELLS
 LOCATION AND ELEVATION (NAVD-88)
 OF USGS WELL CP-968
 REFERENCE SEE PAGE 16
 REFERENCE SEE FIVE GPS PTS 86445.01-14

CP N. Z (STATIC)
 SET 1000 BEC 0129, LEFT SIDE OF THE LEVEE

INST. GPS TRIMBLE R-10 (STATIC) / OPUS INTRC
 START = 8:18 AM
 END = 10:33 AM
 HX = 5.095 FT

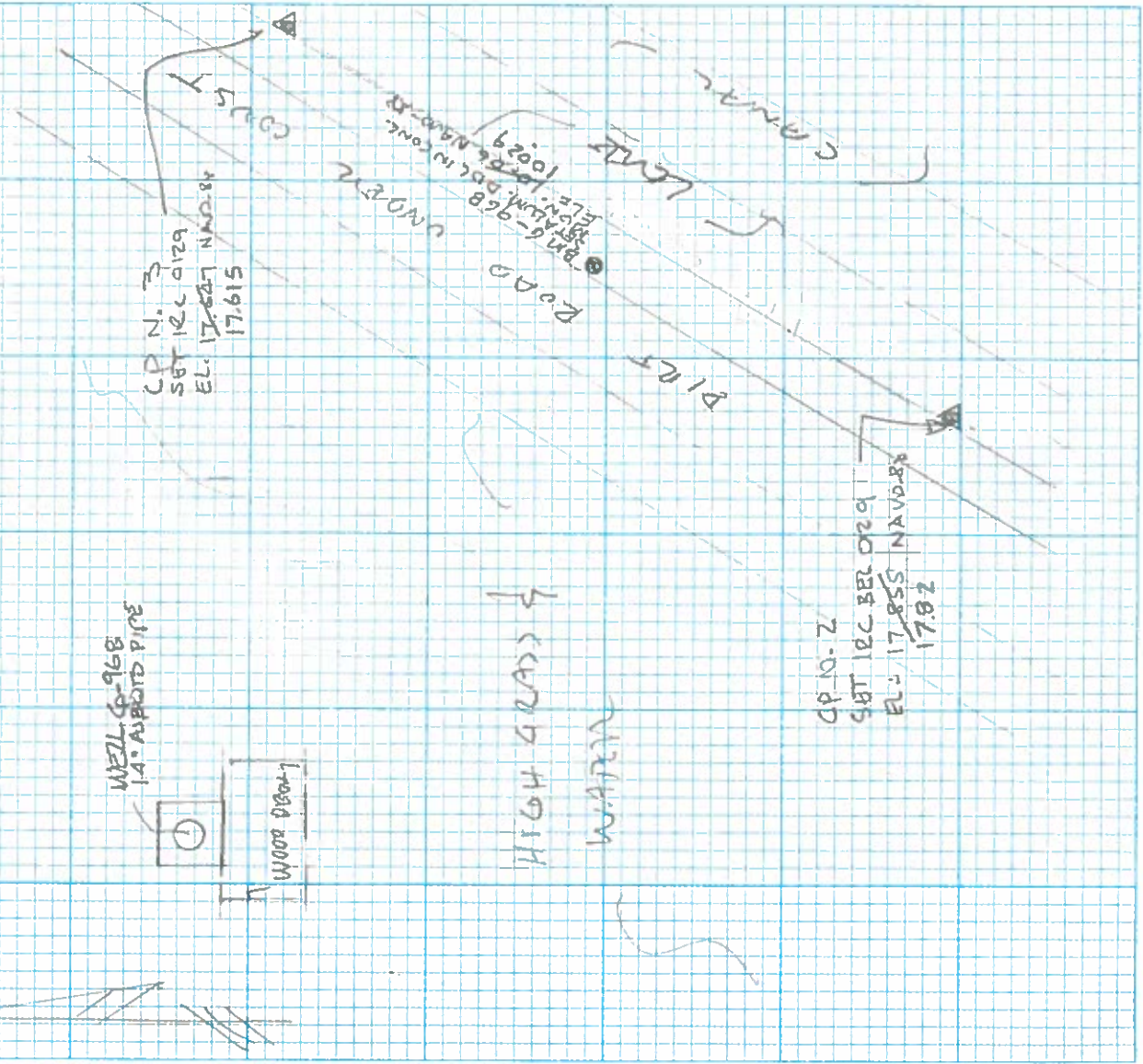
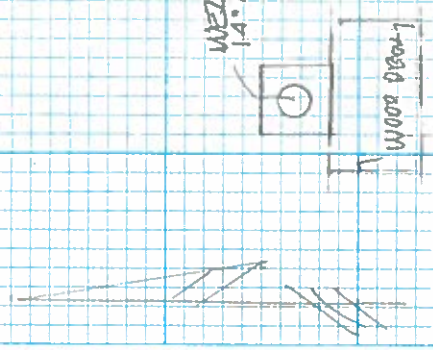
* TOTAL STATION
 86445.14

INST @ CP N. Z (500-518)
 HX = 5.07

STA	TH	HORIZ X	VERT Y	SCOPE	DDT	DEC.
500 = Z	1.50	90.0000"	910.54108'	195.22	5126	0129
CP # A	4.73	15.59'22"	915.48'45"	78.28	BM 6-	968

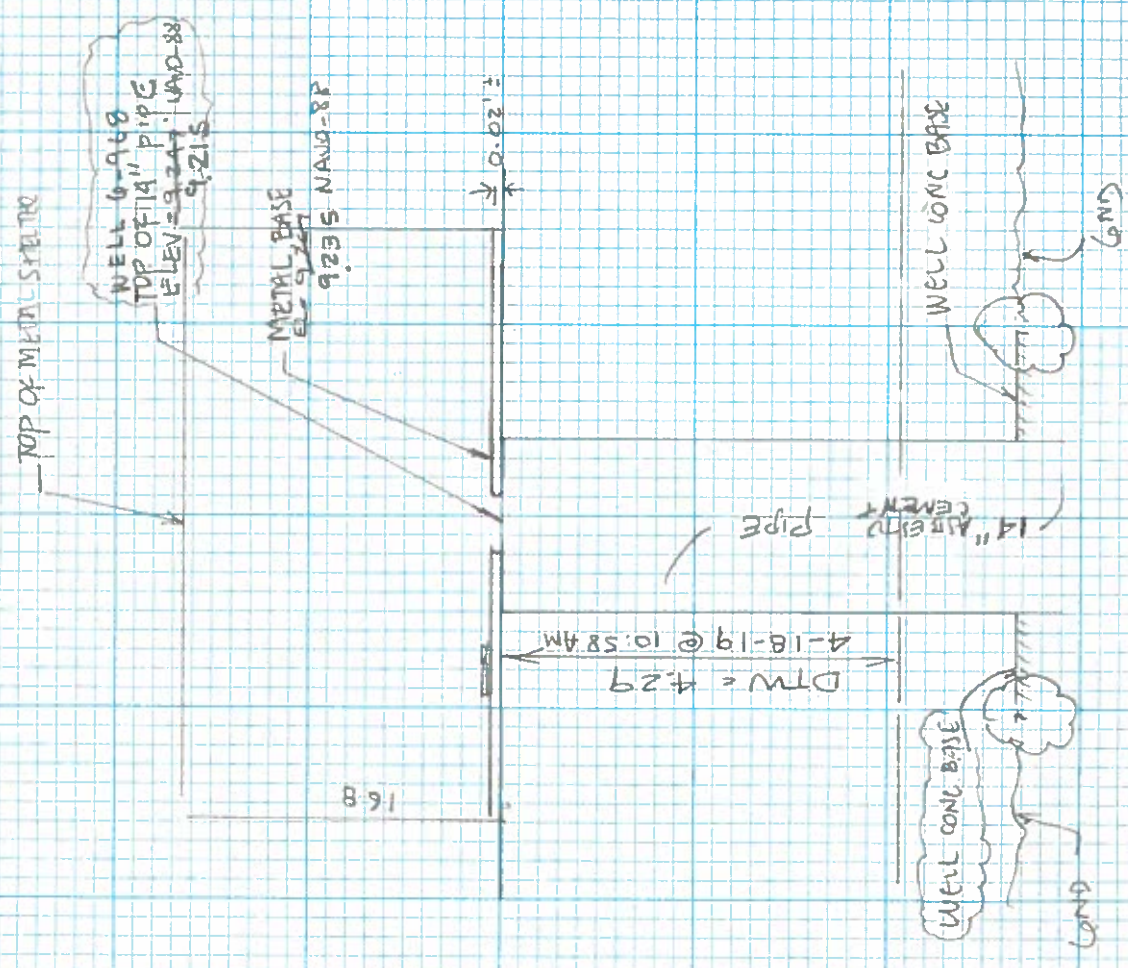
O. LUNA
L. BALLESTEROS
A. UZAL
4-18-19

BEC # 03-86445
S.F.W. M.I.D.
MIAMI DADE (26 WELLS)
LOCATION AND ELEVATIONS (NAVD-88)
OF USGS WELL 6-968



2995-51

LOOKING EAST



NOTE: THE EDGES OF WELL CONC. BASE ARE NOT VISIBLES (UNDER WATER AND MUD)

O. LUNA L. BALLEJTERO A. REAL 4-18-19	BEC # 03-86445 S. F. W. M. D. MIMI DAE (26 WELLS) LOCATION AND ELEVATIONS OF USGWL WELL 4-968	MEAN 142	FS	MEAN
SET	IBS			
CP N. 3	2075 1745 1415	1745	1934	1934
METAL PALE		10125		
WELL 4-968		10685 10145 9605	10145	
SHAPE	10510 9985 9460	9985	1920 1925	
BONA 4-968		929 917 910	917	

ELEVAT.	BIM ELEV.	DESCRIPTION
	17647 17615	SET REC BEC 0129, SEE PAGE 58 No. 10, ELEV = 17.
9267	9235	
9247 9215		TOP OF 14" PIPE
10042 1003	1006 10029	SET ALUM DISC IN CONC M/PN. ELE 10.05 NAVD83 SEE PAGE 49

O. LVINA
L. BALLESTEROS
A. LEAL
5-17-19

BEC #03-86445
S. F. W. M. D.
MIAMI DADE (26 WELLS)
LOCATION AND ELEVATION (NAND-88)
OF USGS WELL G-968
CHECK BM'S

1. BM 10 → FND. CORPS OF ENGINEERS DISC GROUTS IN
(FCE 1248 1952) TOP OF CONC. SPILLWAY OVER PIER (S-32
ELEV = 11.68 NAND-88)
LOCATION VIA GPS RTK / RPNM
LAT: 25° 56' 31.57596(N) LONG: 80° 26' 23.00509(W)

ELEV = 10.044 FT NAND-88 (VIA RTK / RPNM)

2. BM 11 → FND BUDS DISC IN CONC MON. STAMPED
FLORIDA DEPT. OF ENV. PROTECTION B503
2000, ELEV = 17.47 NAND-88

*2.1. LOCATION & ELEVATION VIA GPS RTK / RPNM
R02 3.0' MIN.
LAT 25° 55' 58.06724(N) LONG: 80° 26' 57.06526(W)
ELEVAT = 17.291 NAND-88

3. BM 12 → FND BUDS DISC IN CONC MON. STAMPED
CSD3 2000, FL DEPT OF ENV. PROTECTION
ELEV = 18.06 NAND-88
LOCATION } ELEV VIA GPS RTK / RPNM
LAT 25° 55' 17.96921(N) LONG: 80° 27' 33.34839(W)
ELEV = 17.926 NAND-88

2995-56

ELEVATION	BM ELEV	DESCRIPTION
	18.06	FIND SURVEY DISC IN CONC. MONUMENT, SHARPER FLORIDA DEPT. ENVIRONMENTAL PROTECT C503, 2000, ELEVATION: 18.06' NAVD-88
		1/2 MILE SOUTH FROM BM 5503, 7.0' FT NORTHWEST OF THE APPROX. C OF THE LEVEL 20
17.570		SET OUT N4 1/2 TT, ± 2' EAST OF THE WEST EDGE OF THE LEVEL 20, ± 471.98' NORTH FROM BM C 503
18.256		SET OUT N4 1/2 TT, SET IN THE C OF THE LEVEL ± 503.64 FT NORTH OF THE TP N-1
18.725		SET OUT N4 1/2 TT, SET IN THE C OF THE LEVEL, ± 509.41 FT NORTH FROM TP N-2
17.882		SET OUT N4 1/2 TT, SET IN THE C OF THE LEVEL ± 496.82 FT FROM THE TP N-3
17.853		SET OUT N4 1/2 TT, SET IN THE C OF THE LEVEL ± 492.09 FT NORTH FROM THE TP N-4

STA	BS	DIST	HI	FS	IDIST
OLUNA L. BALLESTEROS A. LEAL S-17-19					
STA AJ 8356 (C 503)	5.528	236.81	23.588		
NAVD88					
TP N-1				6.019	235.17
SHAKE	5.778	251.02	23.348		
TP N-2				5.092	252.62
SHAKE	5.328	258.10	23.584		
TP N-3				5.359	251.31
SHAKE	5.143	248.62	23.368		
TP N-4				5.486	248.20
SHAKE	5.269	246.78	23.151		
TP N-5				5.298	245.31
SHAKE	4.945	252.26	22.798		

STA	DS	DIST.	HI	FS	DIST
TP N. 6	4.732	252.59	22.798	4.541	254.92
SHAKE			22.989		
TP N. 7				5.287	250.03
SHAKE	4.885	254.49	22.586		
TP N. 8				5.059	256.07
SHAKE	5.287	254.00	22.814		
TP N. 9				5.340	253.54
SHAKE	5.296	254.30	22.770		
TP N. 10				4.715	255.97
SHAKE	5.081	249.47	23.136		
TP N. 11				5.571	252.82
SHAKE	5.620	246.42	23.184		

2995-57

ELEVATION	BM LOCAT	DESCRIPTION
18.257		SET OUT NLY TT, SET IN THE E OF THE LEEVE, ± 507.18 FT FROM TP N. 5
17.702		SET OUT NLY TT, SET IN THE E OF THE LEEVE, ± 502.62 FT NORTH FROM TP N. 6
17.527		SET OUT NLY TT, ON E OF THE LEEVE, ± 510.56 FT NORTH FROM TP N. 7
17.473		SET OUT NLY TT, ON E OF THE LEEVE, ± 507.54 FT NORTH FROM TP N. 8
18.054		SET OUT NLY TT, ON E OF THE LEEVE, ± 510.27 FT NORTH FROM TP N. 9
17.565		SET OUT NLY TT, ON E OF THE LEEVE ± 507.18 FT NORTH FROM TP N. 10

Q LUNA
L. BALLESTEROS
A. LEAL
5-17-19
DINI LEVEL (86445114)

BEI # 03-86445
S. F. W. M. D.
MIAMI DADE (26 WELLS)
LOCATION AND ELEVATION (NAVD-88)
OF USGS WELL G-968

STA	BS	DI	HI	FS	DI
TP N-12	5.314	248.82	23.184	5.314	248.82
SHAKE	4.859	237.66	22.730		
CP N-3				5.114	239.99
SHAKE	5.109	99.87	22.724	4.903	95.31
SHAKE	4.992	253.54	22.813	4.654	253.48
TP N-13				4.652	
SHAKE	4.641	251.90	22.799		
AJ 8355 (B 503)				5.341	303.74

2995-58

ELEVATION	B.M. OR W.	DESCRIPTION
17.871		SET OUT NUL 3 TT
17.615		SET REC BEC 0129, SEE PAGE 51
17.820		SET REC BEC 0129, SEE PAGE 51
18.158 18.161		SET OUT NUL 3 TT ON E OF THE LOUVE ± 507.02 SOUTH FROM CP N-2
17.458	17.47	AND SURVIVOR DICE IN CONC. MONUMENT STAMPED FLORIDA DEPT OF ENVIRONMENTAL PROTECTION IS 503 2000, 7' NORTH OF THE GE PIC THE LOUVE. ELEV = 17.47 NAVD - 8P
ERROR = 0.012 DIJ BS - 3847.86 FT FS - 3897.30 FT 7745.16		

O LUNA
 L. BAULESTERO
 A. LEAL
 S-17-19
 DINI LEVEL

BEC # 03-86445
 S.F. W.M.O
 MIAMI DADE (26 WAYS)
 LOCATION AND ELEVATION (NAVD-88)
 DE USES WBL 0-968

NAVD88

The NGS Data Sheet

See file [dsdata.pdf](#) for more information about the datasheet.

PROGRAM = datasheet95, VERSION = 8.12.5.2

1 National Geodetic Survey, Retrieval Date = APRIL 1, 2019

AJ8355 *****

AJ8355 DESIGNATION - B 503

AJ8355 PID - AJ8355

AJ8355 STATE/COUNTY- FL/MIAMI-DADE

AJ8355 COUNTRY - US

AJ8355 USGS QUAD - PENNSUCO (1988)

AJ8355

AJ8355 *CURRENT SURVEY CONTROL

AJ8355

AJ8355* NAD 83(1986) POSITION- 25 55 59. (N) 080 26 56. (W) SCALED

AJ8355* [NAVD 88](#) ORTHO HEIGHT - 5.324 (meters) 17.47 (feet) ADJUSTED

AJ8355

AJ8355 GEOID HEIGHT - -24.833 (meters) GEOID12B

AJ8355 DYNAMIC HEIGHT - 5.316 (meters) 17.44 (feet) COMP

AJ8355 MODELED GRAVITY - 979,041.4 (mgal) NAVD 88

AJ8355

AJ8355 VERT ORDER - FIRST CLASS II

AJ8355

AJ8355.The horizontal coordinates were scaled from a topographic map and have

AJ8355.an estimated accuracy of +/- 6 seconds.

AJ8355.

AJ8355.The orthometric height was determined by differential leveling and

AJ8355.adjusted by the NATIONAL GEODETIC SURVEY

AJ8355.in June 2002.

AJ8355

AJ8355.Significant digits in the geoid height do not necessarily reflect accuracy.

AJ8355.GEOID12B height accuracy estimate available [here](#).

AJ8355

AJ8355.The dynamic height is computed by dividing the NAVD 88

AJ8355.geopotential number by the normal gravity value computed on the

AJ8355.Geodetic Reference System of 1980 (GRS 80) ellipsoid at 45

AJ8355.degrees latitude (g = 980.6199 gals.).

AJ8355

AJ8355.The modeled gravity was interpolated from observed gravity values.

AJ8355

AJ8355; North East Units Estimated Accuracy

AJ8355;SPC FL E - 177,320. 255,210. MT (+/- 180 meters Scaled)

AJ8355

AJ8355_U.S. NATIONAL GRID SPATIAL ADDRESS: 17RNJ551683(NAD 83)

AJ8355

AJ8355 SUPERSEDED SURVEY CONTROL

AJ8355

AJ8355.No superseded survey control is available for this station.

AJ8355

AJ8355_MARKER: DD = SURVEY DISK

AJ8355_SETTING: 7 = SET IN TOP OF CONCRETE MONUMENT

AJ8355_STAMPING: B 503 2000

AJ8355_MARK LOGO: FLDEP

AJ8355_MAGNETIC: B = BAR MAGNET IMBEDDED IN MONUMENT

AJ8355_STABILITY: C = MAY HOLD, BUT OF TYPE COMMONLY SUBJECT TO

AJ8355+STABILITY: SURFACE MOTION

AJ8355_SATELLITE: THE SITE LOCATION WAS REPORTED AS SUITABLE FOR

AJ8355+SATELLITE: SATELLITE OBSERVATIONS - August 31, 2005

AJ8355

AJ8355	HISTORY	- Date	Condition	Report By
AJ8355	HISTORY	- 2000	MONUMENTED	FLDEP
AJ8355	HISTORY	- 20050831	GOOD	WEIDEN

AJ8355

STATION DESCRIPTION

AJ8355

AJ8355'DESCRIBED BY FL DEPT OF ENV PRO 2000 (JLM)

AJ8355'THE MARK IS ABOUT 10.0 MI (16.1 KM) NORTHWEST OF HIALEAH, 24.0 MI
 AJ8355'(38.6 KM) NORTH-NORTHWEST OF MIAMI, 32.0 MI (51.5 KM) NORTH OF
 AJ8355'HOMESTEAD, IN SECTION 9, TOWNSHIP 52 SOUTH, RANGE 39 EAST. TO REACH
 AJ8355'THE MARK FROM THE INTERSECTION OF U.S. HIGHWAY 27 AND THE EASTBOUND
 AJ8355'LANES OF INTERSTATE 75 (ALLIGATOR ALLEY) NEAR ANDYTOWN, GO SOUTH ON
 AJ8355'U.S. HIGHWAY 27 FOR 13.4 MI (21.6 KM) TO THE JUNCTION OF STATE ROAD
 AJ8355'997 ON THE RIGHT, TURN RIGHT ON STATE ROAD 997 AND GO SOUTHWEST FOR
 AJ8355'0.8 MI (1.3 KM) TO THE NORTHEAST END OF A BRIDGE SPANNING MIAMI CANAL
 AJ8355'C-6 AND THE JUNCTION OF A LIME ROCK ROAD ON THE RIGHT, TURN RIGHT ON
 AJ8355'THE LIME ROCK ROAD AND GO WEST FOR 0.1 MI (0.2 KM) TO THE TOP OF A
 AJ8355'LEVEE (NO 30) , TURN LEFT ON THE LEVEE ROAD AND GO SOUTHWEST FOR 0.1
 AJ8355'MI (0.2 KM) TO A LOCKED GATE, CONTINUE SOUTHWEST ON THE LEVEE ROAD FOR
 AJ8355'0.8 MI (1.3 KM) TO THE MARK ON THE RIGHT, SET IN THE TOP OF A ROUND
 AJ8355'CONCRETE MONUMENT RECESSED 0.6 FT (18.3 CM) BELOW THE LEVEL OF THE
 AJ8355'GROUND AND BELOW THE LEVEL OF THE LEVEE ROAD. LOCATED 7.0 FT (2.1 M)
 AJ8355'NORTHWEST OF THE APPROXIMATE CENTERLINE OF THE LEVEE ROAD AND 0.7 FT
 AJ8355'(21.3 CM) SOUTHEAST OF A CARSONITE WITNESS POST. NOTE FOR KEY CONTACT
 AJ8355'SOUTH FLORIDA WATER MANAGEMENT DISTRICT AT 2195 NORTHEAST 8TH STREET
 AJ8355'HOMESTEAD, FL 33033, PHONE NUMBER 305-242-5955. NOTE A BAR MAGNET WAS
 AJ8355'IMBEDDED ON THE NORTH SIDE IN THE MONUMENT.

AJ8355

STATION RECOVERY (2005)

AJ8355

AJ8355

AJ8355'RECOVERY NOTE BY WEIDENER SURVEYING AND MAPPING 2005

AJ8355'RECOVERED IN GOOD CONDITION.

*** retrieval complete.

Elapsed Time = 00:00:04

The NGS Data Sheet

See file [dsdata.pdf](#) for more information about the datasheet.

PROGRAM = datasheet95, VERSION = 8.12.5.3

1 National Geodetic Survey, Retrieval Date = JULY 3, 2019

AJ8356 *****

AJ8356 DESIGNATION - C 503

AJ8356 PID - AJ8356

AJ8356 STATE/COUNTY- FL/MIAMI-DADE

AJ8356 COUNTRY - US

AJ8356 USGS QUAD - PENNSUCO (1988)

AJ8356

AJ8356 *CURRENT SURVEY CONTROL

AJ8356

AJ8356* NAD 83(1986) POSITION- 25 55 18. (N) 080 27 32. (W) SCALED

AJ8356* [NAVD 88](#) ORTHO HEIGHT - 5.505 (meters) 18.06 (feet) ADJUSTED

AJ8356

AJ8356 GEOID HEIGHT - -24.813 (meters) GEOID12B

AJ8356 DYNAMIC HEIGHT - 5.496 (meters) 18.03 (feet) COMP

AJ8356 MODELED GRAVITY - 979,039.7 (mgal) NAVD 88

AJ8356

AJ8356 VERT ORDER - FIRST CLASS II

AJ8356

AJ8356.The horizontal coordinates were scaled from a topographic map and have

AJ8356.an estimated accuracy of +/- 6 seconds.

AJ8356.

AJ8356.The orthometric height was determined by differential leveling and

AJ8356.adjusted by the NATIONAL GEODETIC SURVEY

AJ8356.in June 2002.

AJ8356

AJ8356.Significant digits in the geoid height do not necessarily reflect accuracy.

AJ8356.GEOID12B height accuracy estimate available [here](#).

AJ8356

AJ8356.The dynamic height is computed by dividing the NAVD 88

AJ8356.geopotential number by the normal gravity value computed on the

AJ8356.Geodetic Reference System of 1980 (GRS 80) ellipsoid at 45

AJ8356.degrees latitude (g = 980.6199 gals.).

AJ8356

AJ8356.The modeled gravity was interpolated from observed gravity values.

AJ8356

AJ8356; North East Units Estimated Accuracy

AJ8356;SPC FL E - 176,050. 254,210. MT (+/- 180 meters Scaled)

AJ8356

AJ8356_U.S. NATIONAL GRID SPATIAL ADDRESS: 17RNJ541671(NAD 83)

AJ8356

AJ8356 SUPERSEDED SURVEY CONTROL

AJ8356

AJ8356.No superseded survey control is available for this station.

AJ8356

AJ8356_MARKER: DD = SURVEY DISK

AJ8356_SETTING: 7 = SET IN TOP OF CONCRETE MONUMENT

AJ8356_STAMPING: C 503 2000

AJ8356_MARK LOGO: FLDEP
AJ8356_MAGNETIC: B = BAR MAGNET IMBEDDED IN MONUMENT
AJ8356_STABILITY: C = MAY HOLD, BUT OF TYPE COMMONLY SUBJECT TO
AJ8356+STABILITY: SURFACE MOTION
AJ8356_SATELLITE: THE SITE LOCATION WAS REPORTED AS SUITABLE FOR
AJ8356+SATELLITE: SATELLITE OBSERVATIONS - August 31, 2005

AJ8356
AJ8356 HISTORY - Date Condition Report By
AJ8356 HISTORY - 2000 MONUMENTED FLDEP
AJ8356 HISTORY - 20050831 GOOD WEIDEN

AJ8356
AJ8356 STATION DESCRIPTION
AJ8356

AJ8356'DESCRIBED BY FL DEPT OF ENV PRO 2000 (JLM)
AJ8356'THE MARK IS ABOUT 10.5 MI (16.9 KM) NORTHWEST OF HIALEAH, 24.0 MI
AJ8356'(38.6 KM) NORTH-NORTHWEST OF MIAMI, 31.0 MI (49.9 KM) NORTH OF
AJ8356'HOMESTEAD, IN SECTION 17, TOWNSHIP 52 SOUTH, RANGE 39 EAST. TO REACH
AJ8356'THE MARK FROM THE INTERSECTION OF U.S. HIGHWAY 27 AND THE EASTBOUND
AJ8356'LANES OF INTERSTATE 75 (ALLIGATOR ALLEY) NEAR ANDYTOWN, GO SOUTH ON
AJ8356'U.S. HIGHWAY 27 FOR 13.4 MI (21.6 KM) TO THE JUNCTION OF STATE ROAD
AJ8356'997 ON THE RIGHT, TURN RIGHT ON STATE ROAD 997 AND GO SOUTHWEST FOR
AJ8356'0.8 MI (1.3 KM) TO THE NORTHEAST END OF A BRIDGE SPANNING MIAMI CANAL
AJ8356'(CANAL C-6) AND THE JUNCTION OF A LIME ROCK ROAD ON THE RIGHT, TURN
AJ8356'RIGHT ON LIME ROCK ROAD AND GO WEST FOR 0.1 MI (0.2 KM) TO THE TOP OF
AJ8356'A LEVEE (NO 30) , TURN LEFT ON THE LEVEE ROAD AND GO SOUTHWEST FOR 0.1
AJ8356'MI (0.2 KM) TO A LOCKED GATE, CONTINUE SOUTHWEST ON LEVEE ROAD FOR 1.8
AJ8356'MI (2.9 KM) TO THE MARK ON THE RIGHT, SET IN TOP OF A ROUND CONCRETE
AJ8356'MONUMENT RECESSED 0.4 FT (12.2 CM) BELOW THE LEVEL OF THE GROUND AND
AJ8356'0.6 FT (18.3 CM) BELOW THE LEVEL OF THE LEVEE ROAD. LOCATED 81.3 FT
AJ8356'(24.8 M) NORTHWEST OF A CARSONITE WITNESS POST, 19.7 FT (6.0 M)
AJ8356'SOUTHEAST OF A CARSONITE WITNESS POST, 7.0 FT (2.1 M) NORTHWEST OF THE
AJ8356'APPROXIMATE CENTERLINE OF THE LEVEE ROAD. NOTE FOR KEY CONTACT SOUTH
AJ8356'FLORIDA WATER MANAGEMENT DISTRICT AT 2195 NORTHEAST 8TH STREET
AJ8356'HOMESTEAD, FL 33033, PHONE NUMBER 305-242-5955. NOTE A BAR MAGNET WAS
AJ8356'IMBEDDED ON THE NORTH SIDE IN THE MONUMENT.

AJ8356
AJ8356 STATION RECOVERY (2005)
AJ8356

AJ8356'RECOVERY NOTE BY WEIDENER SURVEYING AND MAPPING 2005
AJ8356'RECOVERED IN GOOD CONDITION.

*** retrieval complete.
Elapsed Time = 00:00:04