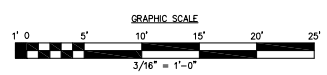


**Q-509 HYDRATION PUMP STATION - GENERAL PLAN**  
SCALE: 3/16" = 1'-0"

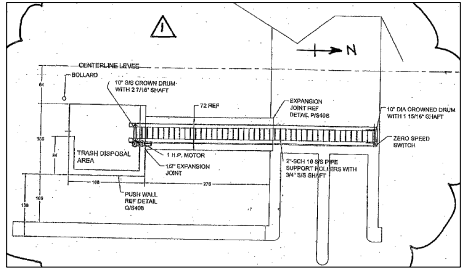


**RECORD DRAWING**

THESE DRAWINGS PRESENT A COMPLETED REPRESENTATION OF THE CONSTRUCTED PROJECT, AS CONTRACTED AND REFERRED TO IN THE ORIGINAL DESIGN WERE DOCUMENTED BY THE CONTRACTOR HARRY HOFFER & ASSOCIATES, INC. ON THE PROJECT. THESE DRAWINGS, THE CONTRACTOR'S SUPERVISOR, FIELD AND ASSISTANT SUPERVISORS, PROFESSIONAL ENGINEER, ARCHITECTS, CIVIL ENGINEERS, PROFESSIONAL SURVEYORS, AND AN INDEPENDENT TEAM OF INSPECTORS PROVIDED BY ACTION OF WEST PALM BEACH, FLORIDA, AND DOCUMENTED CONSTRUCTION, REVIEWED AND VERIFIED THE PROJECT BEARING DRAWINGS AND PREPARED VERIFICATION SURVEYS. THE UNDERWRITER ENGINEER OR PERSONS THEREON BE RESPONSIBLE CHANGE. PERSONS WHO OBSERVE THE ACTUAL CONSTRUCTION AND CONSTRUCTION METHODS AND MATERIALS, INCLUDING, BUT NOT LIMITED TO, SHOP DRAWINGS, FIELD NOTES, CHANGE ORDERS, AND FIELD ORDERS, THE DOCUMENTED CHANGES TO THE ORIGINAL DESIGN, WERE COMPLETED ON THE RECORD DRAWING SET UNDER THE RESPONSIBLE CHARGE OF THE UNDERWRITER ENGINEER AND ARE CONSIDERED AS CLOSURE.

THE ORIGINAL DESIGN AND THE ORIGINAL DRAWINGS WERE REVIEWED AND SEEALED BY HANDEE SHAWA, CHIEF ENGINEER, PROFESSIONAL ENGINEER LICENSE NUMBER 11090. THE SCALE OF THIS DRAWING IS 3/16" = 1'-0". HANDEE SHAWA, PROFESSIONAL ENGINEER LICENSE NUMBER 5007. CONSIDER ONLY THE RECORDED CHANGES MADE TO THIS DRAWING AND ARE BEING TO BE CORRECT TO THE BEST OF THE ENGINEER'S KNOWLEDGE.

BY: LYLE G. BLUNCE PE No. 50097 DATE:



- NOTES:**
1. THIS DRAWING IS FOR AN OVERALL REFERENCE ONLY.
  2. FOR COORDINATES OF WORKING POINTS AND GRADING PLAN SEE SHEET C209.
  3. SEE SHEET S303 FOR FOUNDATION PLAN.
  4. SEE SHEET S304 FOR OPERATING FLOOR PLAN.
  5. SEE SHEET S002, S003 & S004 FOR ALL STRUCTURAL MISCELLANEOUS DETAILS AND STANDARD ABBREVIATIONS.
  6. RCP PIPE TO CONCRETE STRUCTURE JOINT TO BE SEALED WITH DISTRICT APPROVED SEALING COMPOUND, AND IN ACCORDANCE WITH SPECIFICATION SECTIONS 02433 & 15020.
  7. FOR MECHANICAL DETAILS SEE M101, M201, M202 AND M203.
  8. FOR ELECTRICAL AND INSTRUMENTATION DETAILS SEE SERIES E AND I DRAWINGS.



The consultant, contractor or other parties associated with this project shall comply with Florida Statutes Chapter 119. These plans are the property of the District and must be secured and maintained in a confidential manner. Review by any unauthorized individual or outside/third party not performing work necessary for this project is prohibited.

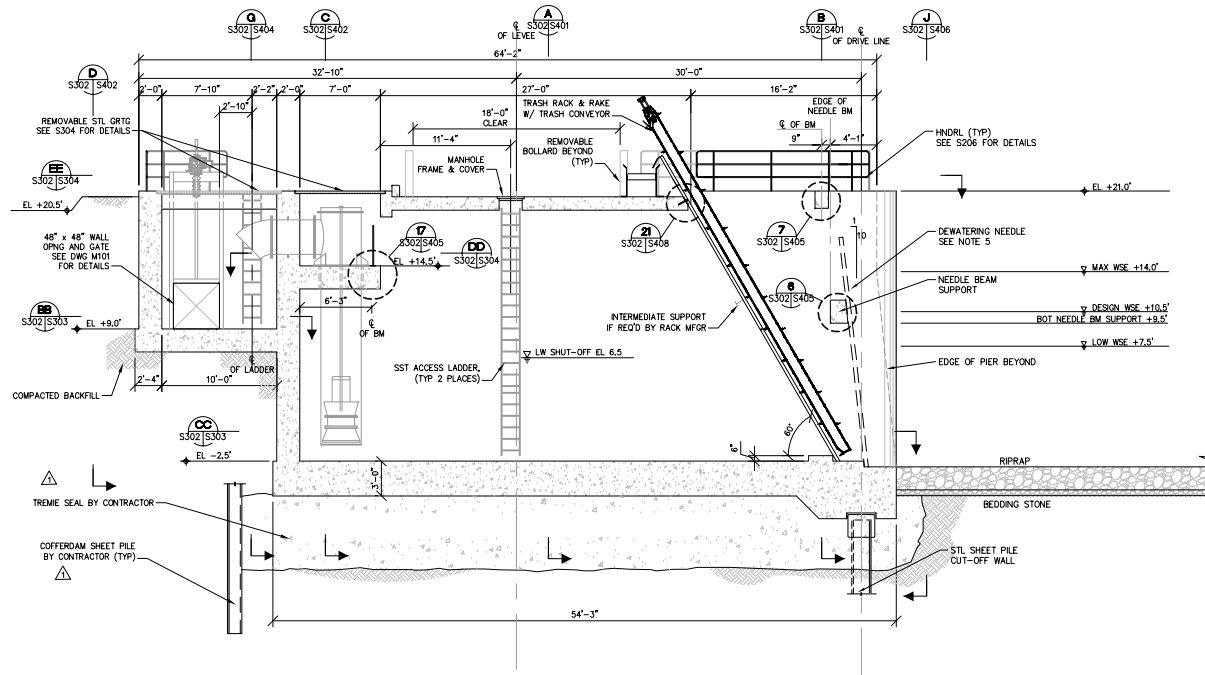


OWNER OF RECORD: 3371 ANTHONY J. INDARSKY E. ENGINEERING CERTIFICATE NO. 02153

ENGINEER-IN-CHARGE	HARRY HOFFER & ASSOCIATES, INC.	DATE	10/10/08	REV#	0
DRAWN BY	CHESTER MA	DATE	11/19/07	REV#	0
CHECKED BY	DATE	11/19/07	REV#	0	0
ISSUED FOR	ISSUED FOR	ISSUED FOR	ISSUED FOR	ISSUED FOR	ISSUED FOR
REVISION DESCRIPTION	REVISION DESCRIPTION	REVISION DESCRIPTION	REVISION DESCRIPTION	REVISION DESCRIPTION	REVISION DESCRIPTION
RECORD DRAWING	RECORD DRAWING	RECORD DRAWING	RECORD DRAWING	RECORD DRAWING	RECORD DRAWING
ADDITIONAL BOLLARDS - REF. RFP-20	ADDITIONAL BOLLARDS - REF. RFP-20	ADDITIONAL BOLLARDS - REF. RFP-20	ADDITIONAL BOLLARDS - REF. RFP-20	ADDITIONAL BOLLARDS - REF. RFP-20	ADDITIONAL BOLLARDS - REF. RFP-20
REMOVED LADDER LOCATION - REF. RFP-184	REMOVED LADDER LOCATION - REF. RFP-184	REMOVED LADDER LOCATION - REF. RFP-184	REMOVED LADDER LOCATION - REF. RFP-184	REMOVED LADDER LOCATION - REF. RFP-184	REMOVED LADDER LOCATION - REF. RFP-184
TRASH CONVEYOR/DISPOSAL AREA MODIFICATION	TRASH CONVEYOR/DISPOSAL AREA MODIFICATION	TRASH CONVEYOR/DISPOSAL AREA MODIFICATION	TRASH CONVEYOR/DISPOSAL AREA MODIFICATION	TRASH CONVEYOR/DISPOSAL AREA MODIFICATION	TRASH CONVEYOR/DISPOSAL AREA MODIFICATION

**SOUTH FLORIDA WATER MANAGEMENT DISTRICT**  
EVERGLADES RESTORATION  
COMPARTMENT C BULDOZT  
HENRY COUNTY, FLORIDA  
G-508 HYDRATION P.S. - GENERAL PLAN  
PHONE: 561-686-8800  
3301 PALM CLUB ROAD  
WEST PALM BEACH, FLORIDA 33406

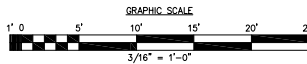
**EVERGLADES CONSTRUCTION PROJECT**  
COMPARTMENT C BULDOZT  
HENRY COUNTY, FLORIDA  
G-508 HYDRATION P.S. - GENERAL PLAN  
RECORD DRAWING  
DATE: 10/10/08



**NOTES**

1. THIS DRAWING IS FOR AN OVERALL REFERENCE ONLY.
2. SEE SHEET S303 FOR FOUNDATION PLAN.
3. SEE SHEET S304 FOR OPERATING FLOOR PLAN.
4. SEE SHEET S002, S003 & S004 FOR ALL MISCELLANEOUS DETAILS & STANDARD ABBREVIATIONS.
5. DEWATERING NEEDLE IS TO BE PROVIDED BY SFMWD.
6. SEE DRAWINGS M101, M202, AND M203 FOR MECHANICAL DETAILS.

**G-509 HYDRATION PUMP STATION-GENERAL SECTION**  
SCALE: 3/16" = 1'-0"



**RECORD DRAWING**

THESE DRAWINGS PRESENT A COVERED REPRESENTATION OF THE CONSTRUCTED PROJECT, AS CONSTRUCTION PROCEEDS TO THE FINAL DESIGN HERE DOCUMENTED BY THE CONTRACTOR. HADRY PERRY & ASSOCIATES, ON THE PROJECT BEHALF HEREAFTER, THE CONTRACTOR'S SUPERVISOR, HIS AND ASSOCIATE PROVIDED ASSET SURVEY DRAWINGS CARRIED BY A FL LICENSED PROFESSIONAL SURVEYOR, AN INDEPENDENT TEAM OF ENGINEERS PROVIDED BY AGENCY OF WEST PALM BEACH, FL OBSERVED AND DOCUMENTED CONSTRUCTION, REVIEWED AND VERIFIED THE PROJECT RECORD DRAWINGS AND PERFORMED VERIFICATION SURVEYS. THE UNDERSIGNED ENGINEER OF RECORD HAS REVIEWED THE RECORDS AND PERIODICALLY OBSERVED THE ACTUAL CONSTRUCTION AND INSPECTION ACTIVITIES AND HAS REVIEWED THE DOCUMENTATION BY THE CONTRACTOR AND INSPECTORS, INCLUDING BUT NOT LIMITED TO SHOP DRAWINGS, TESTING RESULTS, CHANGE ORDERS AND FIELD ORDERS. THESE DOCUMENTS, CHANGES TO THE ORIGINAL DESIGN WERE COVERED IN THE RECORDS. THEREFORE, THE RESPONSIBLE CHARGE OF THE UNDESIGNED ENGINEER AND HIS EMPLOYER IS CLOSED.

THE ORIGINAL DESIGN AND THE ORIGINAL DRAWING WAS REVIEWED AND SEALED BY PAMPER SCHWENGMAN, P.E., FL PROFESSIONAL ENGINEER LICENSE NUMBER 2208. THE SEAL OF LYLE D. MURKIN, P.E., FL PROFESSIONAL ENGINEER LICENSE NUMBER 8087, COVERS ONLY THE RECORD DRAWING CHANGES MADE TO THE ORIGINAL AND WILL BE HELD TO BE CORRECT TO THE BEST OF THE ENGINEER'S KNOWLEDGE.

BY: LYLE D. MURKIN PE No. 85097 DATE:



ENGINEER OF RECORD: 33711  
ANTHONY J. MORGAN  
FL ENGINEERING CERTIFICATE NO. 01213

ENGINEER-IN-CHARGE	ANTHONY J. MORGAN	DATE	10/10/08
DRAWN BY	COFFERDAM/TREME SEAL	DUN	0
CHECKED BY	ISSUED FOR BID	DATE	11/06/07
SCALE	AS SHOWN	DRAWN	REV#
RECORD DRAWING			

**SOUTH FLORIDA WATER MANAGEMENT DISTRICT**  
EVERGLADES RESTORATION  
COMPARTMENT C BULLDOZ  
HENRY COUNTY, FLORIDA  
PHONE: 561-686-8800  
3301 GUN CLUB ROAD  
WEST PALM BEACH, FLORIDA 33406

PROJECT # NO. B510C  
DRAWING NO. S302  
SHEET 169 OF 257