

# G-700 Structure Operations

# Overview

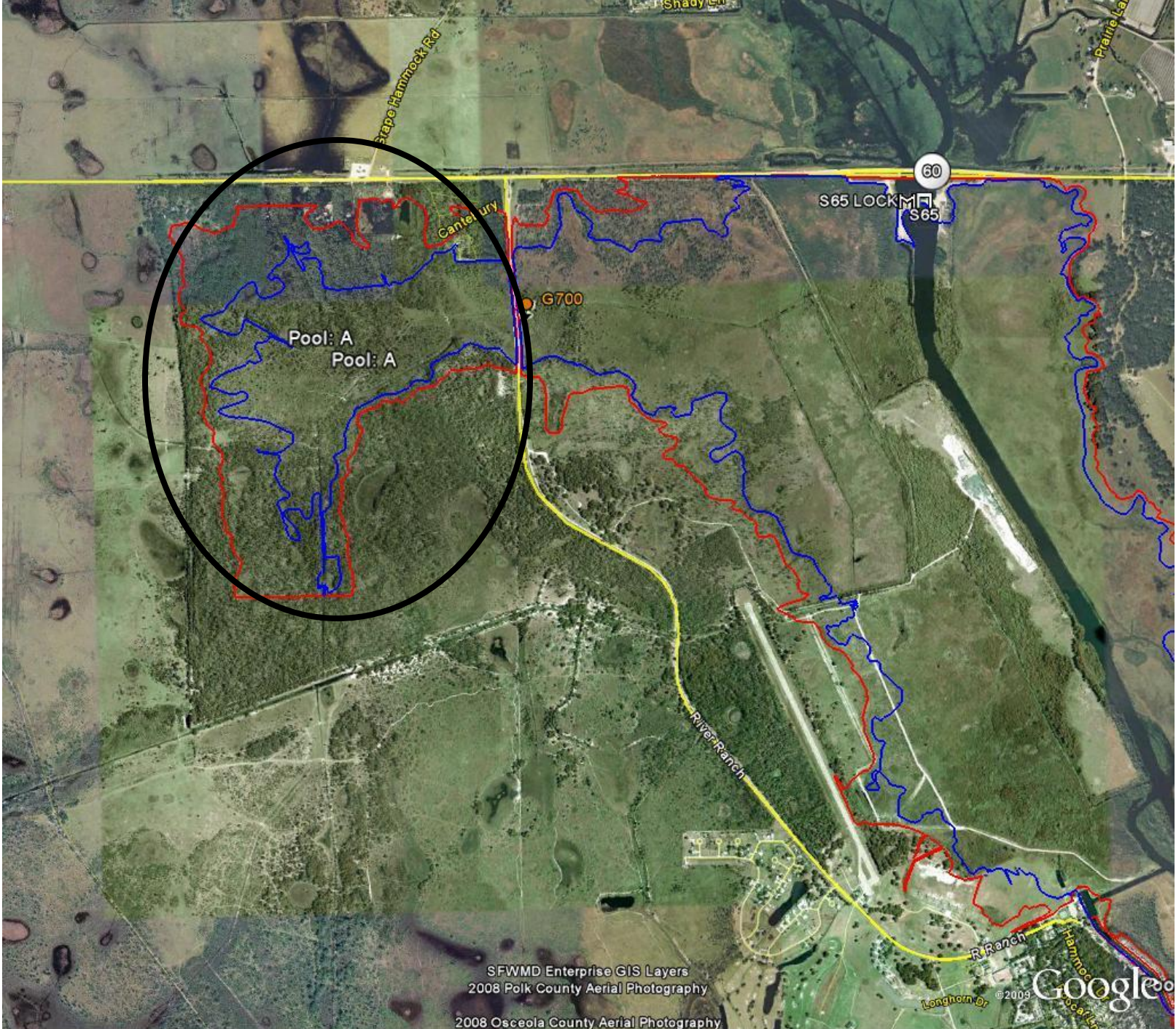
1. History and background
2. Future G-700 operations
3. Discuss temporary culverts under River Ranch Blvd.

# Purpose: Structural solution in lieu of real estate acquisition

- **KRR Project Requirements:** Acquire lands within the 100-year flood line or mitigate for flood impacts within those areas
- **Background:** Approx. 300 landowners within 100 year flood line west of River Ranch BLVD
- **Justification:** Engineering solution in lieu of real estate acquisition would be less costly than acquiring and/or condemning those lands

# History of Engineering in lieu of Land Acquisition Solution

- In 2004 USACE– tasked with finding a structural solution to alleviate the need for real estate acquisition in the Packingham Slough footprint.
- Recommended Plan – 72” culvert with slide gate, 40cfs pump, operations plan (G-700).
- Purpose of G-700: maintain the pre-project flood stages in Packingham Slough after KRR is fully implemented.



SFWMD Enterprise GIS Layers  
2008 Polk County Aerial Photography

2008 Osceola County Aerial Photography

Imagery Dates: Jan 2, 2008 - Dec 12, 2008

27°47'21.89" N 81°12'53.64" W elev 0 ft

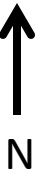
Eye alt 16555 ft



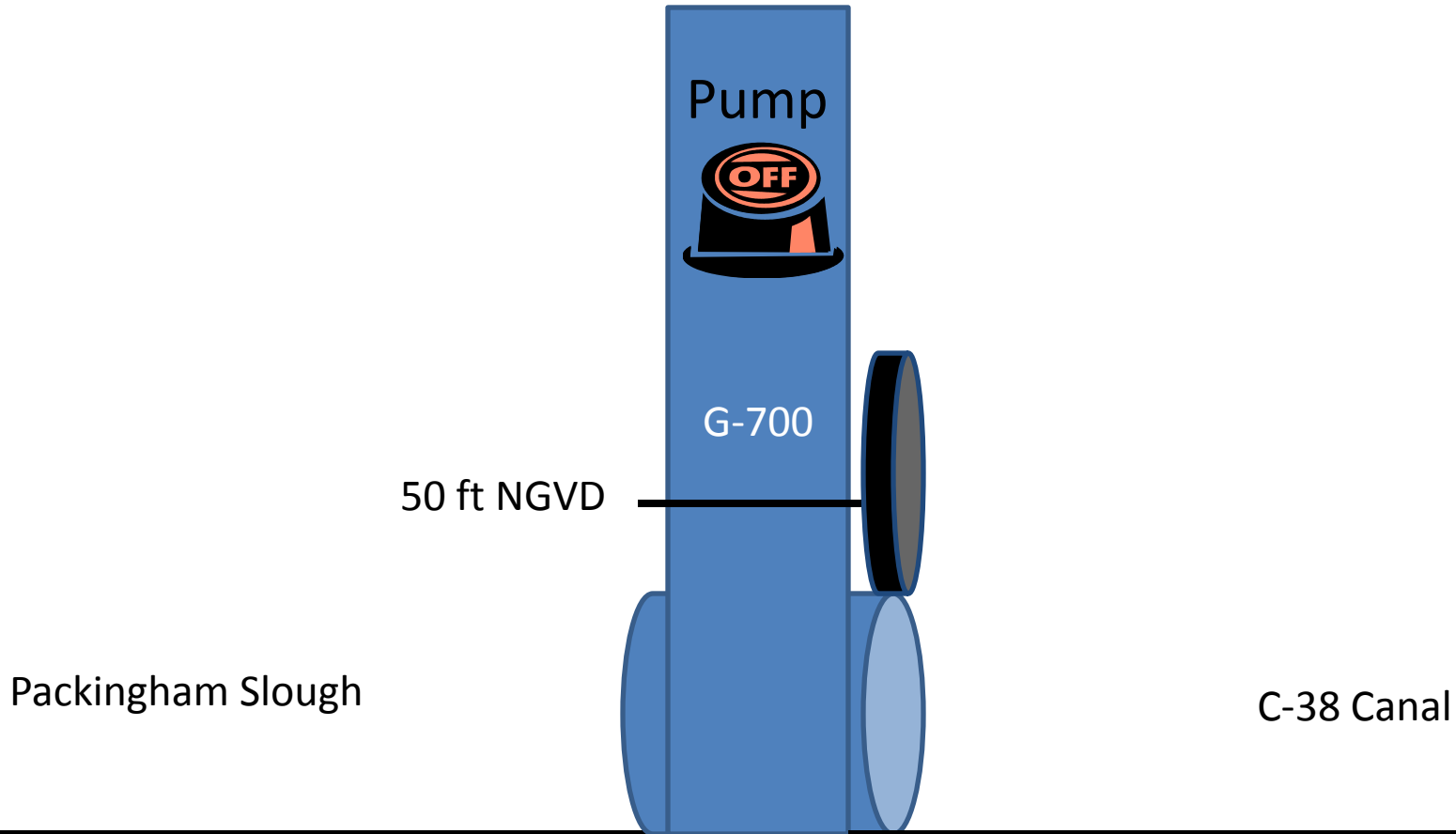


**March 25, 2010**

# G-700 Operation



- When stage in Packingham Slough reaches 50 ft NGVD, G-700 pump switches on and pumps until stage is below 50 ft NGVD.
- Gate closes if stage in C-38 reaches 50 ft NGVD to prevent backflow into Packingham Slough from C-38.
- Gate opens when stage in C-38 recedes below 50 ft NGVD.
- If stage in Packingham Slough and C-38 are above 50 ft NGVD the gate closes and pump stays on until Packingham Slough is below 50 ft NGVD



Temporary  
Culverts.





# Temporary Culverts

- Two culverts were installed under River Ranch Blvd. to help relieve flooding in Packingham Slough.
- In the future these culverts will allow water to backflow into Packingham Slough, negating the effect of the G-700 structure.

# Questions/Discussion