

442-W

Schlumberger

COMPENSATED NEUTRON LOG



COMPANY: SUN EXPLORATION & PRODUCTION COMPANY

WELL: LEE CYRESS #28-2

HE-948

FIELD: WEST FELDA
COUNTY: HENDRY
STATE: FLORIDA

LOCATION:

SEC: TWP: RGE:

PERMANENT DATUM: GL
ELEV. OF PERM. DATUM:
LOG MEASURED FROM: RKB
15.0 ' ABOVE PERM. DATUM
DRLG. MEASURED FROM: RKB

ELEVATIONS-
KB:
DF:
GL:

OTHER SERVICES-
DIL
CNL
BGT

PROGRAM
TAPE NO:
24.2

AT AT AT
AT AT AT

DATE: 26 MAY 86
RUN NO: 1

DEPTH-DRILLER: 2907.0 '
DEPTH-LOGGER: 2920.0 '
BTM. LOG INTERVAL: 2891.0 '
TOP LOG INTERVAL: 1208.0 '

CASING-DRILLER: 1256 '
CASING-LOGGER: 1208 '
CASING: 13.375

BIT SIZE: 12.25
DEPTH: 2907 '

TYPE FLUID IN HOLE: SALT WATER

DENSITY:

VISCOSITY:

PH:

FLUID LOSS:

SOURCE OF SAMPLE: NONE

RM:

RMF:

RMC:

SOURCE RMF/RMC: /

RM AT BHT:

RMF AT BHT:

RMC AT BHT:

TIME CIRC. STOPPED:

TIME LOGGER ON BTM.: 1600

MAX. REC. TEMP:

LOGGING UNIT NO: 8193

LOGGING UNIT LOC: FT MYERS

RECORDED BY: BUCHEL

WITNESSED BY: GRAY

REMARKS:

UNABLE TO RUN BOW SPRING OR
STAND OFFS, DUE TO BORE HOLE CONDITIONS
NO WATER SAMPLE AVAILABLE

LOGGING UNIT NO: 8193
 LOGGING UNIT LOC: FT MYERS
 RECORDED BY: BUCHEL
 WITNESSED BY: GRAY

REMARKS:

UNABLE TO RUN BOW SPRING OR
 STAND OFFS, DUE TO BORE HOLE CONDITIONS
 NO WATER SAMPLE AVAILABLE

EQUIPMENT NUMBERS-

DIS 504 DIC 1123 IEM 323 CNC 1255
 NLM 65 NSR 501

ALL INTERPRETATIONS ARE OPINIONS BASED ON INFERENCES FROM ELECTRICAL OR OTHER MEASUREMENTS AND WE CANNOT, AND DO NOT GUARANTEE THE ACCURACY OR CORRECTNESS OF ANY INTERPRETATIONS, AND WE SHALL NOT, EXCEPT IN THE CASE OF GROSS OR WILLFUL NEGLIGENCE ON OUR PART, BE LIABLE OR RESPONSIBLE FOR ANY LOSS, COSTS, DAMAGES OR EXPENSES INCURRED OR SUSTAINED BY ANYONE RESULTING FROM ANY INTERPRETATION MADE BY ANY OF OUR OFFICERS, AGENTS OR EMPLOYEES. THESE INTERPRETATIONS ARE ALSO SUBJECT TO OUR GENERAL TERMS AND CONDITIONS AS SET OUT IN OUR CURRENT PRICE SCHEDULE.

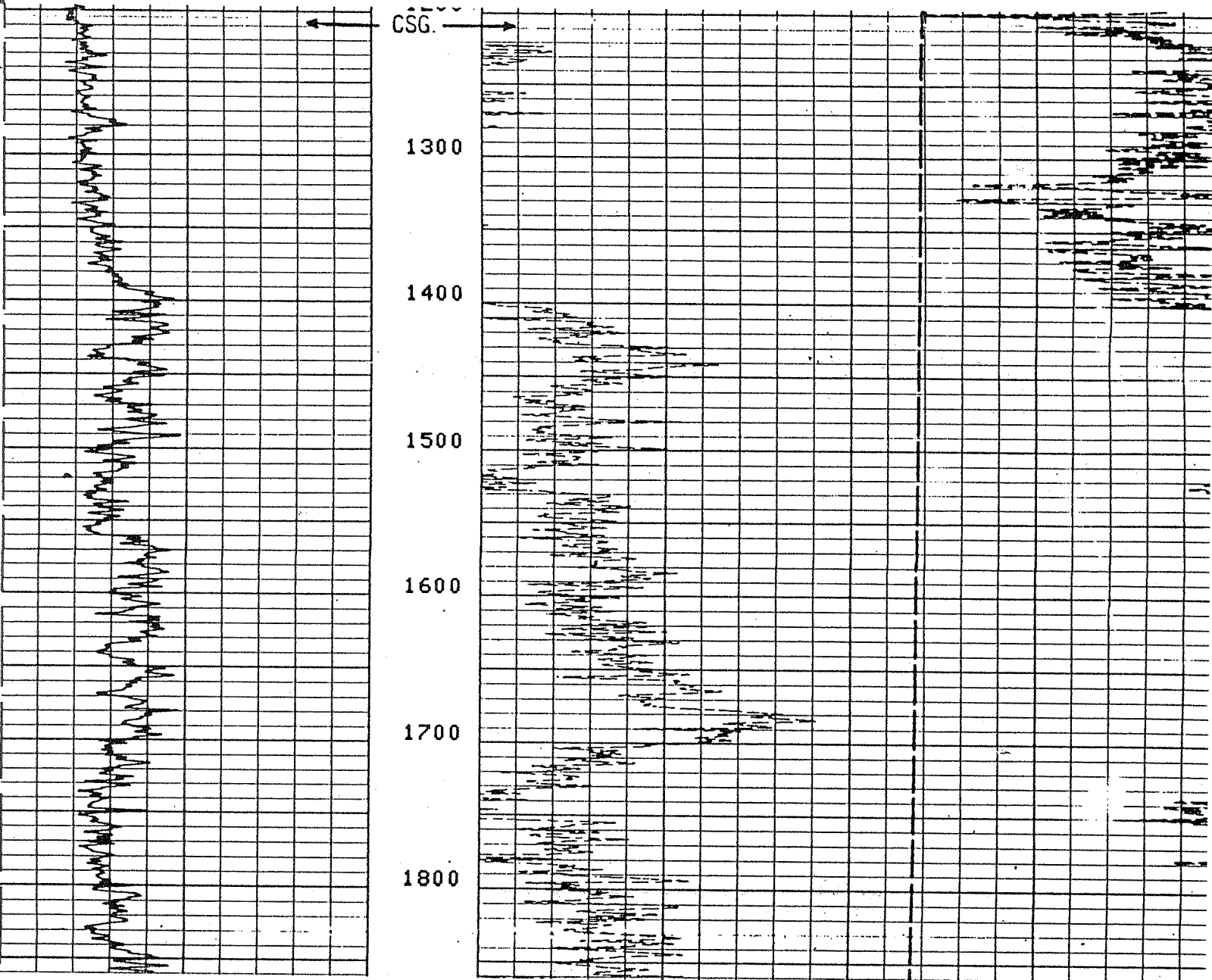
FILE

11

			TENS(LB)
			13000. 3000.0
GR (GAPI)		NPHI()	
0.0 100.00		0.4500	-0.150

FILE

8



1700

1800

1900

2000

2100

2200

2300

2400

2500

2600

2700

2800

FR2900

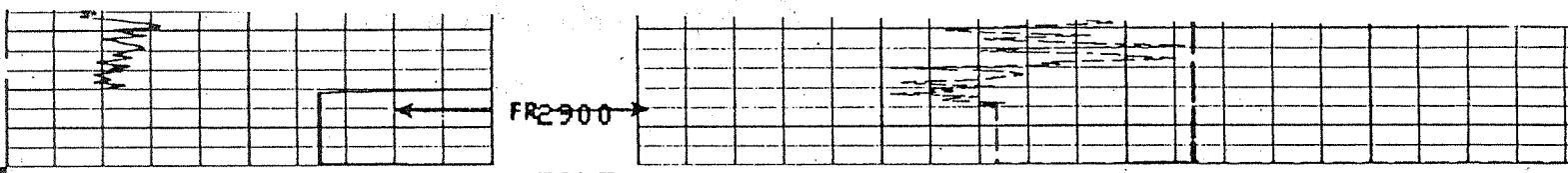
FILE

8

TENS(LB)

13000.

3000.



FR2900

FILE

8

GR (GAPI)		TENS(LB)	
0.0	100.00	13000.	3000.
		NPHI()	
		0.4500	-0.15

SENSOR MEASURE POINT TO SENSOR REFERENCE POINT

NCNL 29.2 FEET	GR 37.7 FEET
ILD 6.9 FEET	FCNL 29.2 FEET
ILM 3.3 FEET	SFL 3.9 FEET
SPAR .0 FEET	SP .0 FEET
NRAT 29.2 FEET	TENS .0 FEET

PARAMETERS

NAME	VALUE	UNIT	NAME	VALUE	UNIT
PSNR	2.32000		BS	12.2500	IN
MATR	LIME		HC	BS	
SBR	1.00000	DHMM	DSEC	7.20000	MMHD
FPHI	NPHI		MSEC	6.30000	MMHD
DD	0.0	F	BHS	OPEN	
PP	NORM				

TAPE NOT MADE

GR (GAPI)		TENS(LB)	
0.0	100.00	13000.	3000.0
		NPHI()	
		0.4500	-0.150

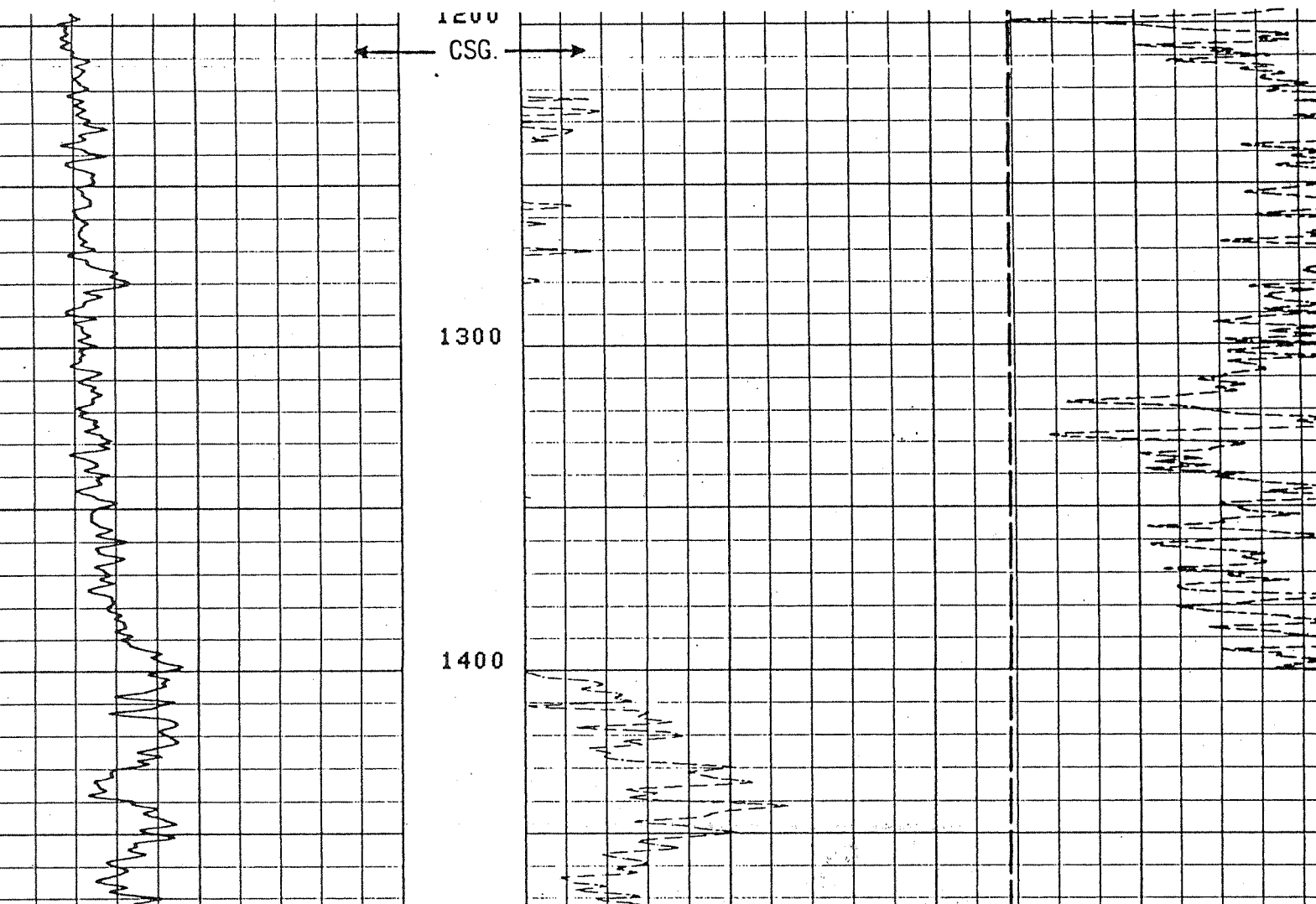
FILE

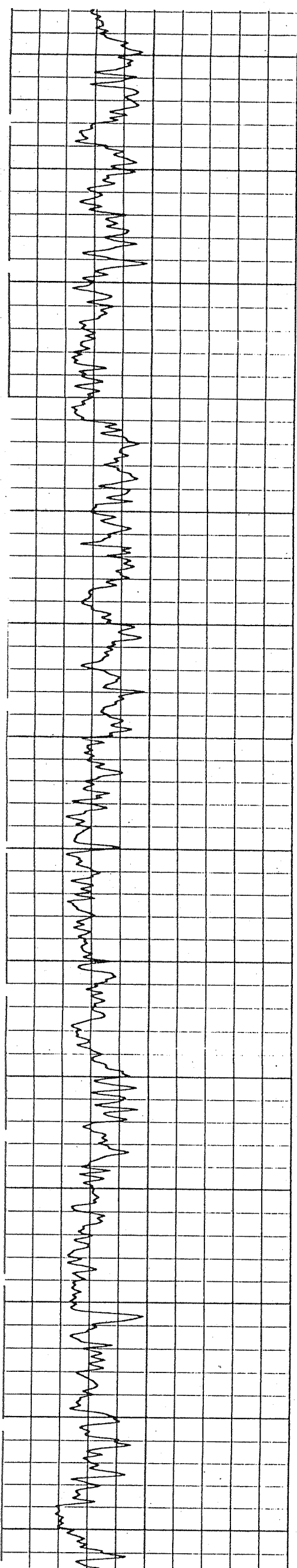
8

1200
CSG.

1300

1400





1400

1500

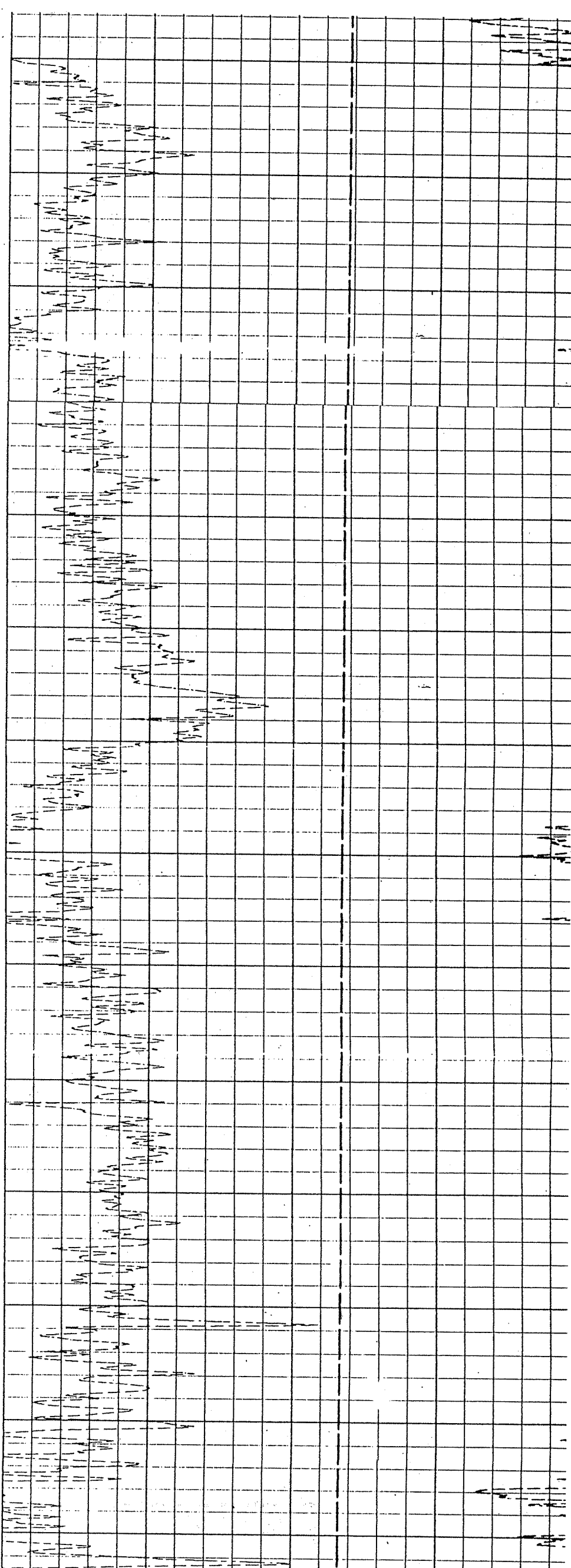
1600

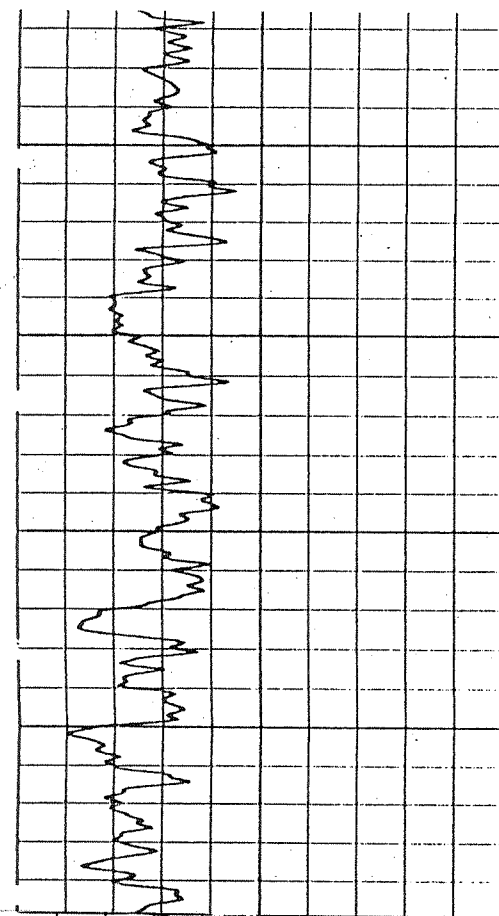
1700

1800

1900

2000

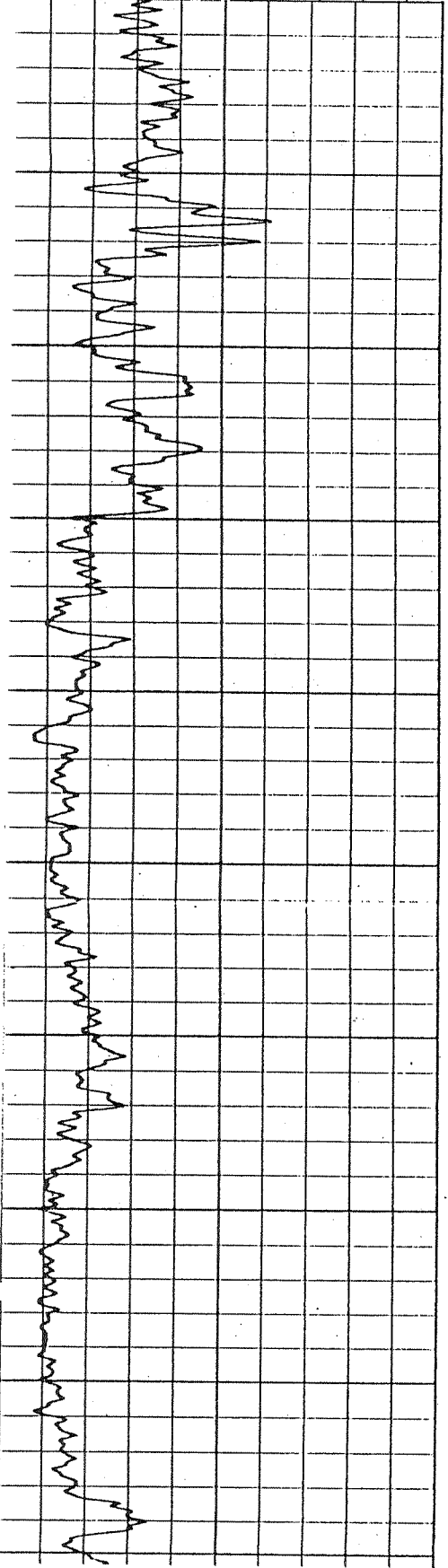
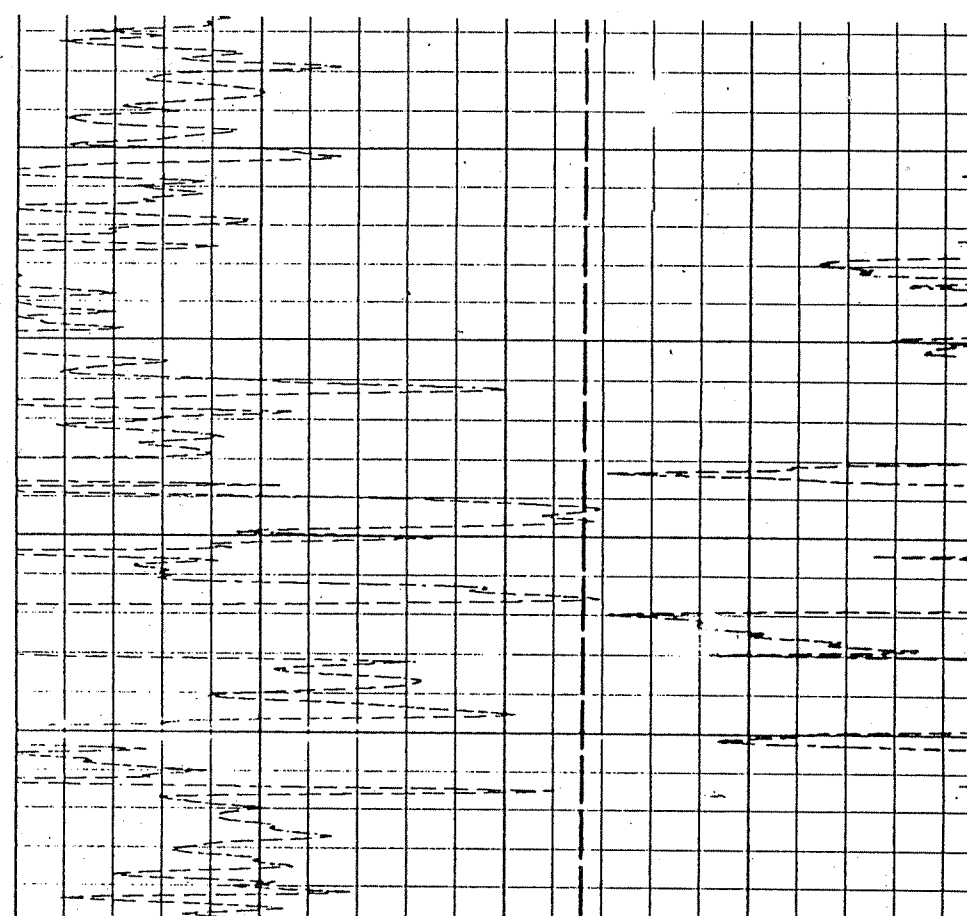




2000

2100

2200

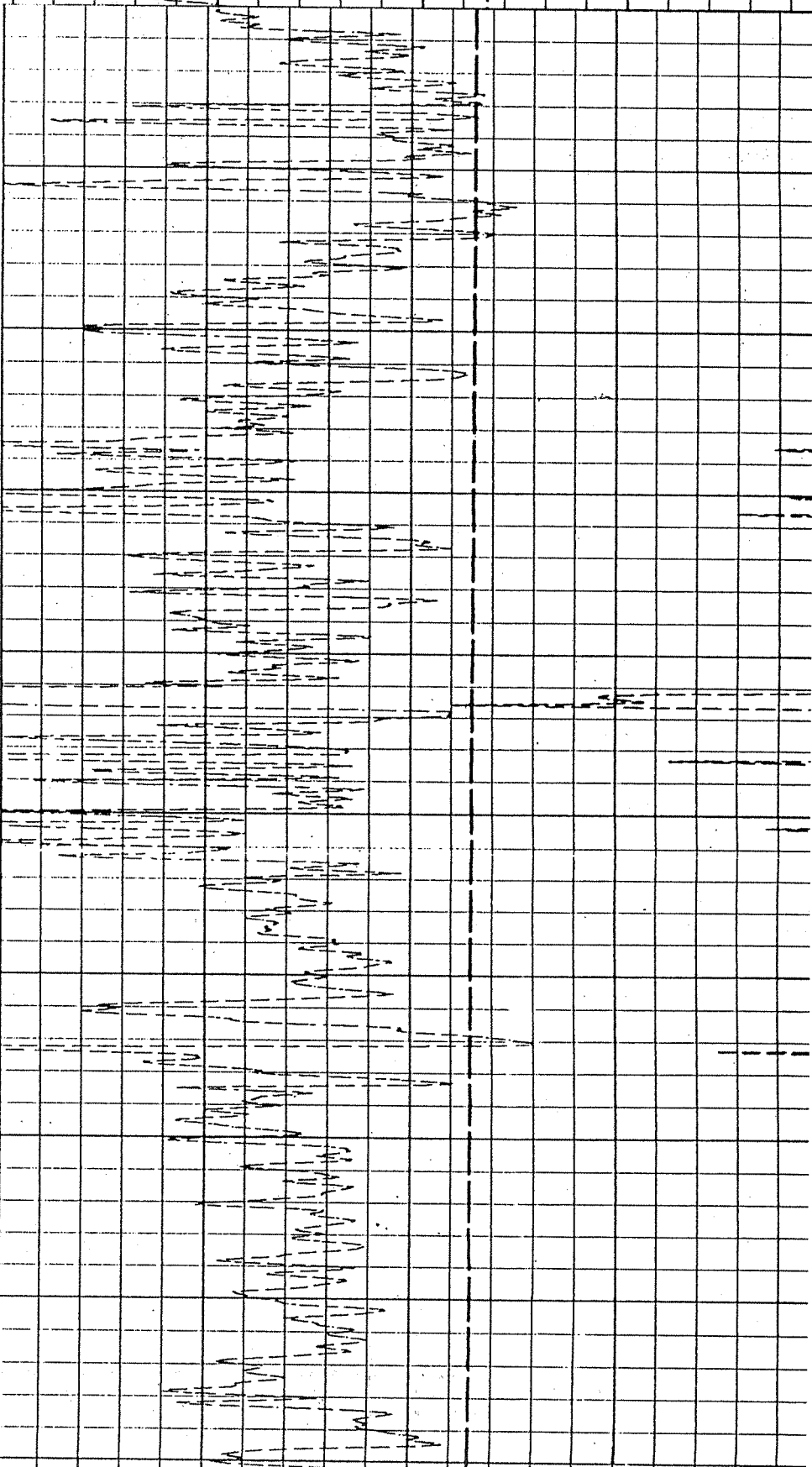


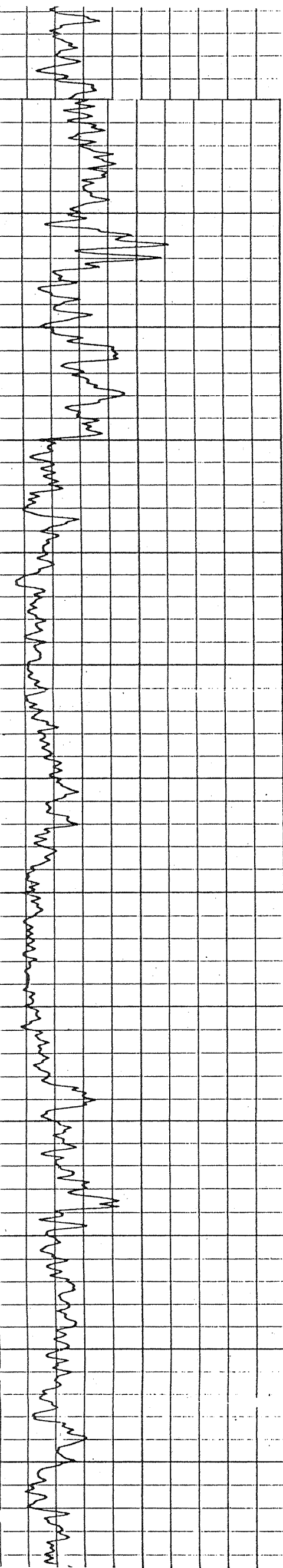
2300

2400

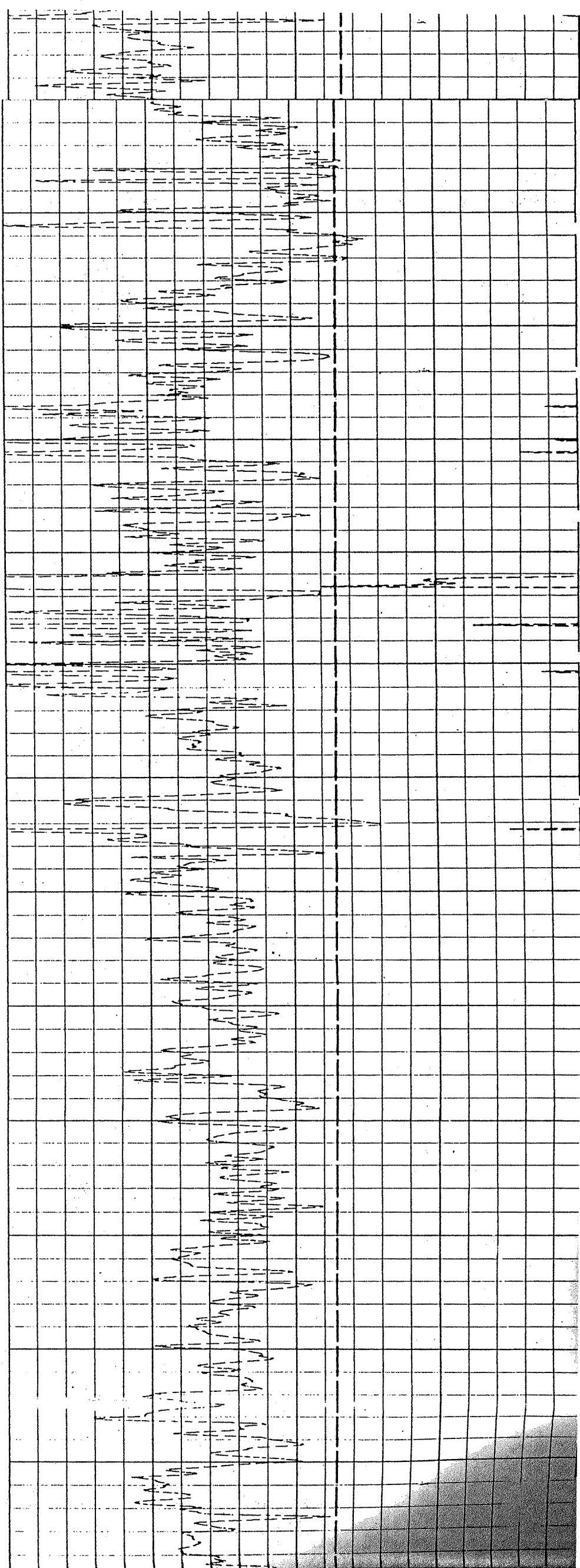
2500

2600





2200
2300
2400
2500
2600
2700
2800



442-2
Schlumberger

BGT

CSU Field Log

may be HE-948 (permit 442)
Yes. location
is same

HE-948

COMPANY: SUN EXPLORATION & PRODUCTION COMPANY
 WELL: LEE CYPRESS 28-2
 FIELD: WEST FELDA
 COUNTY: HENDRY
 STATE: FLORIDA
 LOCATION:
 SEC: TWP: RGE:
 PERMANENT DATUM: GL
 ELEVATIONS-
 ELEV. OF PERM. DATUM: RKB
 LOG MEASURED FROM: RKB
 ABOVE PERM. DATUM
 DRLG. MEASURED FROM: RKB
 DATE: 26 MAY 86
 RUN NO: 1
 DEPTH-DRILLER: 2907.0
 DEPTH-LOGGER: 2125.0
 BTM LOG INTERVAL: 2124.0
 TOP LOG INTERVAL: 1208.0
 CASING-DRILLER: 1556
 CASING-LOGGER: 1208
 CASING: 13.375
 BIT SIZE: 12.25
 DEPTH: 2907

OTHER SERVICES-
 DIL
 CNT
 BGT

PROGRAM
 TAPE NO:
 24.2
 SERVICE
 ORDER NO:

TYPE FLUID IN HOLE: SALT WATER
 DENSITY:
 VISCOSITY:
 PH:
 FLUID LOSS:
 SOURCE OF SAMPLE: NONE
 RM: AT
 RMF: AT
 RMC: AT
 SOURCE RMF/RMC: /
 RM AT BHT: AT
 RMF AT BHT: AT
 RMC AT BHT: AT
 TIME CIRC. STOPPED:
 TIME LOGGER ON BTM.: 1600
 MAX. REC. TEMP:
 LOGGING UNIT NO: 8193
 LOGGING UNIT LOC: FT MYERS
 RECORDED BY: BUCHEL
 WITNESSED BY: GRAY

REMARKS:

EQUIPMENT NUMBERS-

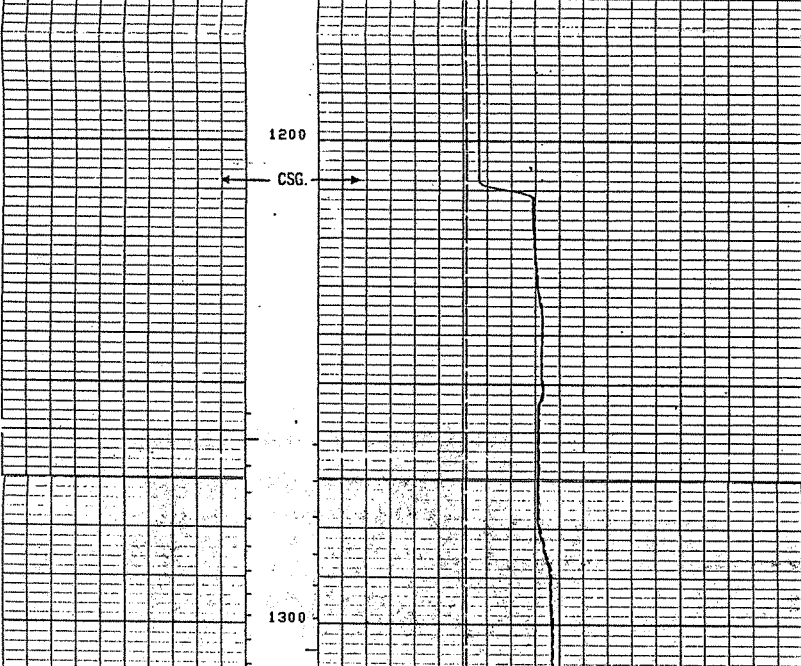
ALL INTERPRETATIONS ARE OPINIONS BASED ON INFERENCES FROM ELECTRICAL OR OTHER MEASUREMENTS AND WE CANNOT, AND DO NOT GUARANTEE THE ACCURACY OR CORRECTNESS OF ANY INTERPRETATIONS, AND WE SHALL NOT, EXCEPT IN THE CASE OF GROSS OR WILLFUL NEGLIGENCE ON OUR PART, BE LIABLE OR RESPONSIBLE FOR ANY LOSS, COSTS, DAMAGES OR EXPENSES INCURRED OR SUSTAINED BY ANYONE RESULTING FROM ANY INTERPRETATION MADE BY ANY OF OUR OFFICERS, AGENTS OR EMPLOYEES. THESE INTERPRETATIONS ARE ALSO SUBJECT TO OUR GENERAL TERMS AND CONDITIONS AS SET OUT IN OUR CURRENT PRICE SCHEDULE.

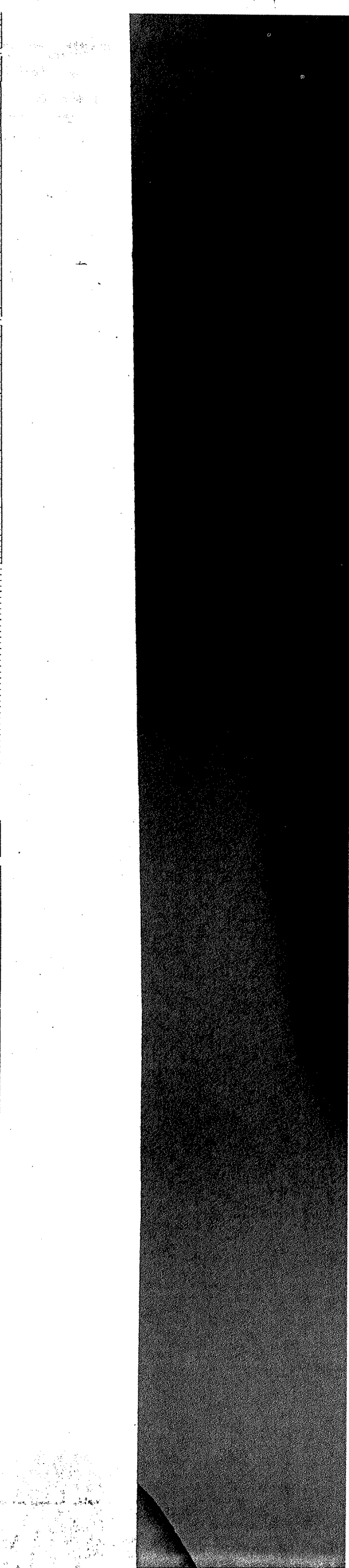
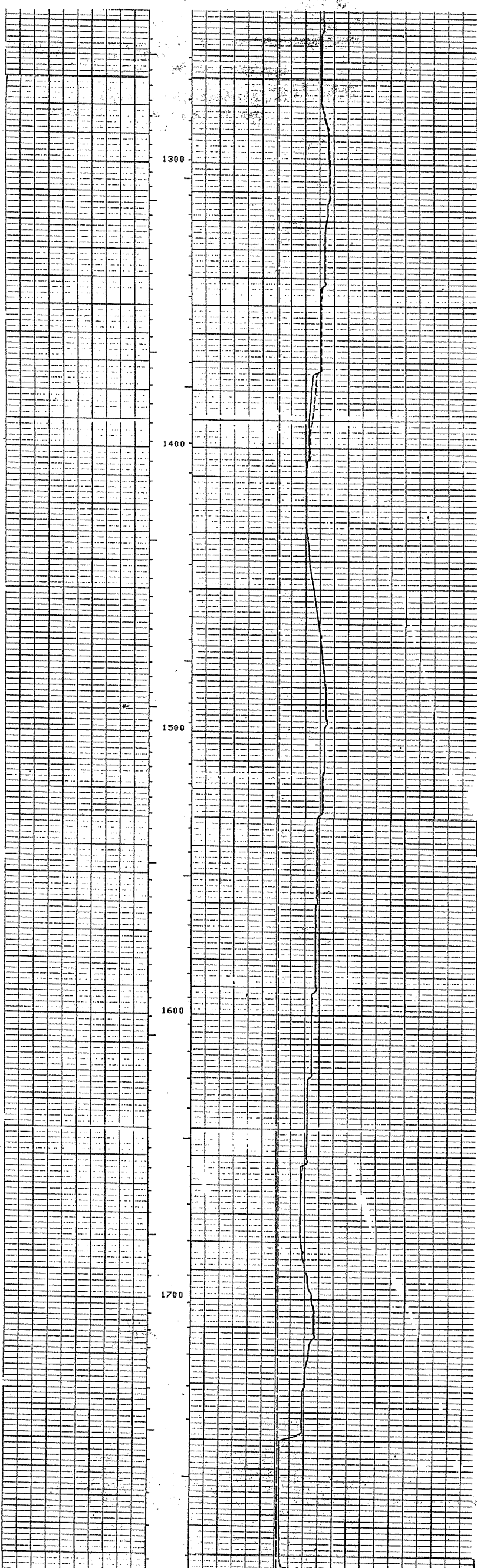
FILE 11

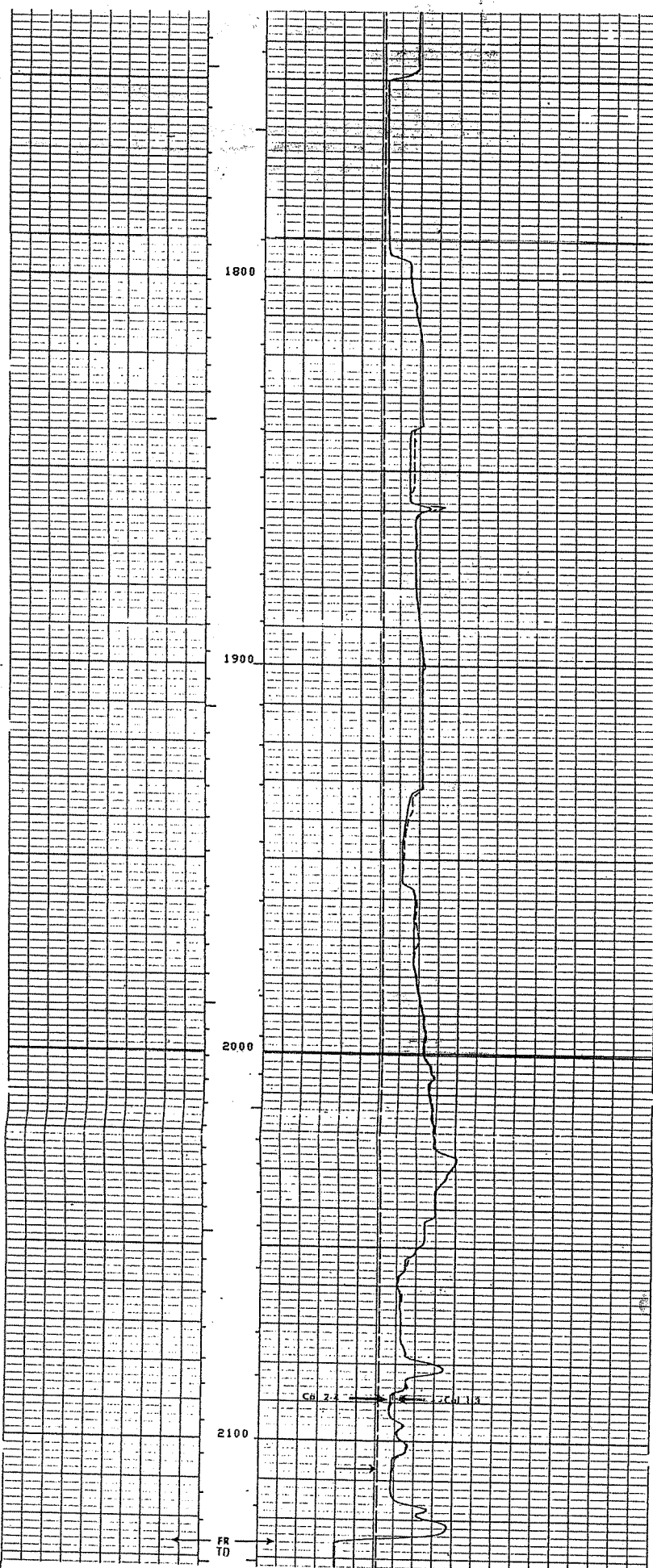
CHANGED PARAMETERS

NAME	VALUE	UNIT	DEPTH (F)	NAME	VALUE	UNIT	DEPTH (F)
AREA	0.0	(FT ²)	0.1000				
AFCD	0.0	(FT ²)	0.1000				
ABS	0.0	(FT ²)	0.1000				
BS	0.0	(IN)	40.000				
C2	0.0	(IN)	40.000				
C1	0.0	(IN)	40.000				

FILE 7

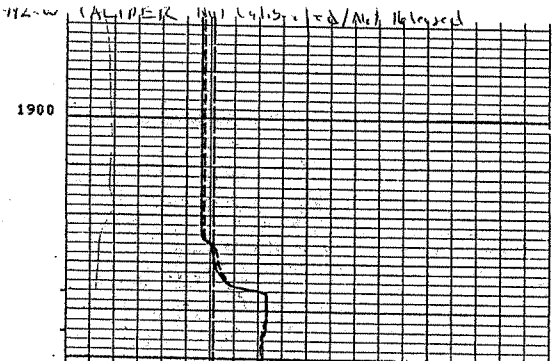
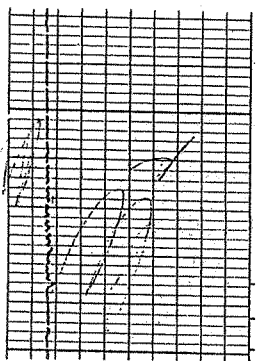




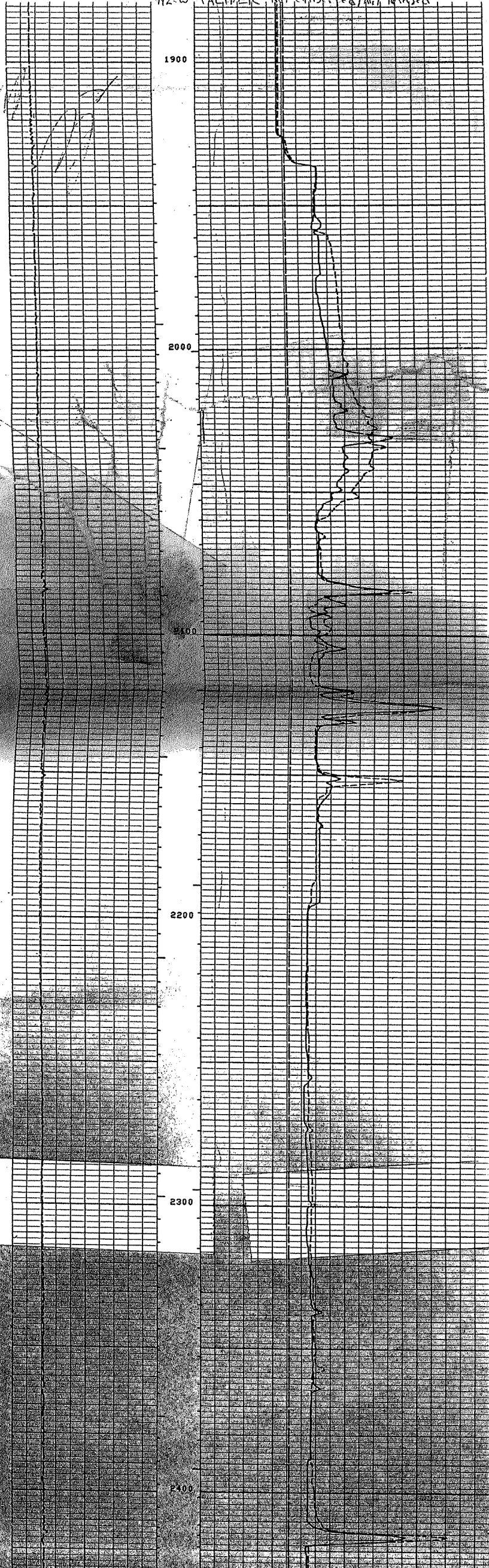


FILE

AREA(FT2)	0.1000
AFCD(FT2)	0.1000
ABS (FT2)	0.1000



112-0 CALIFORNIA No. 1915-100 / No. 1610201



1900

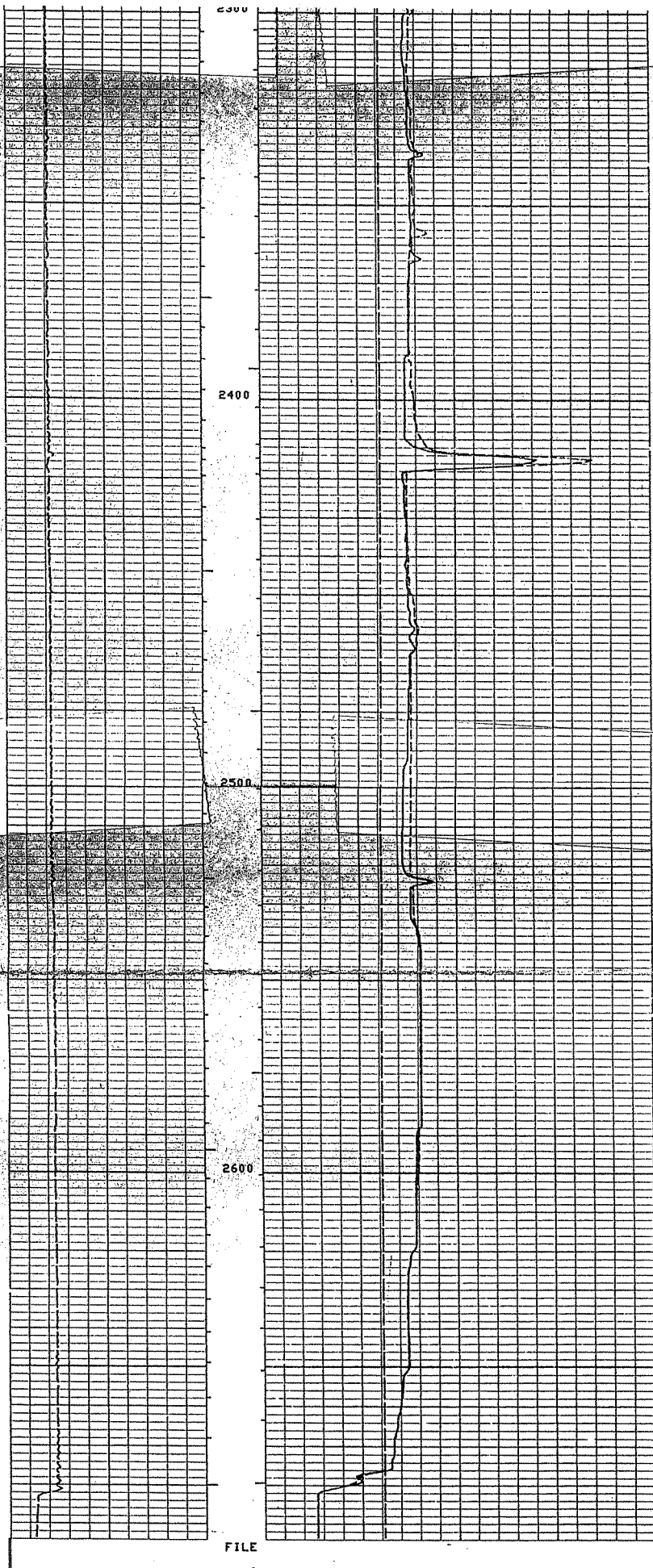
2000

2100

2200

2300

2400



FILE

472-U
Schlumberger
DUAL INDUCTION - SFL



COMPANY: SUN EXPLORATION & PRODUCTION COMPANY
WELL: LEE CYPRESS #28-2
FIELD: WEST FELDA
COUNTY: HENRY
STATE: FLORIDA
LOCATION: T63212 813138
SEC: 28 NW 35 81 45 S RGE: 28 E
X 21619 50107 R

PERMANENT DATUM: GL
ELEVATIONS-
ELEV. OF PERM. DATUM: RB
LOG. MEASURED FROM: PERM. DATUM
DLG. MEASURED FROM: RB

DATE: 26 May 86
RUN NO: 1
#171 AVVA SE

DEPTH-DRILLER: 2907.0
DEPTH-LOGGER: 2907.0
BTM: 2918.0
TOP LOG INTERVAL: 1208.0
CASSING-DRILLER: 1256
CASSING-LOGGER: 1208
BIT SIZE: 12.25
DEPTH: 2907

OTHER SERVICES-
DIL
CNL
BGI

PROGRAM
TAPE NO:
24.2

TYPE FLUID IN HOLE: SALT WATER
DENSITY:
VISCOSITY:
PH:
FLUID LOSS:
SOURCE OF SAMPLE: NONE
RM:
RMC:
SOURCE RMF/RMC:
RM AT BHT:
RMC AT BHT:

AT
AT
AT
AT
AT

TIME CIRC. STOPPED:
TIME LOGGER ON BTM.: 1600
MAX. REC. TEMP:
LOGGING UNIT NO: 8193
LOGGING UNIT LOC: FT MYERS
RECORDED BY: BUCHEL
WITNESSED BY: GRAY

REMARKS:
UNABLE TO RUN BOW SPRING DR
STAND OFFS, DUE TO BORE HOLE CONDITIONS
NO WATER SAMPLE AVAILABLE

