



WELL LOG

WELL LOCATION

County HIGHLANDS  
 Station I.D. 0550000016  
 Date 5/15/85 Well No. HIF-16  
 Latitude \_\_\_\_\_ Longitude \_\_\_\_\_  
 \_\_\_\_\_ Section \_\_\_\_\_ Township \_\_\_\_\_ Range \_\_\_\_\_  
 Owner LYKES CITRUS Phone \_\_\_\_\_  
 Driller \_\_\_\_\_ Date Drilled \_\_\_\_\_

DATUM

K.B. \_\_\_\_\_ L.S. \_\_\_\_\_ T.O.C. +1.0'

FLUID QUALITY

Date \_\_\_\_\_ Time \_\_\_\_\_ Source of Sample \_\_\_\_\_  
 Cl \_\_\_\_\_ mg/l Type of Fluid \_\_\_\_\_  
 Temp. \_\_\_\_\_ °C Field Density \_\_\_\_\_ @ \_\_\_\_\_ °C  
 T.D.S. \_\_\_\_\_ mg/l Spec. Cond. \_\_\_\_\_ μmhos/cm  
 Logged By: E. DAUENHAUER Witnessed By: D. BACON

WELL CONSTRUCTION

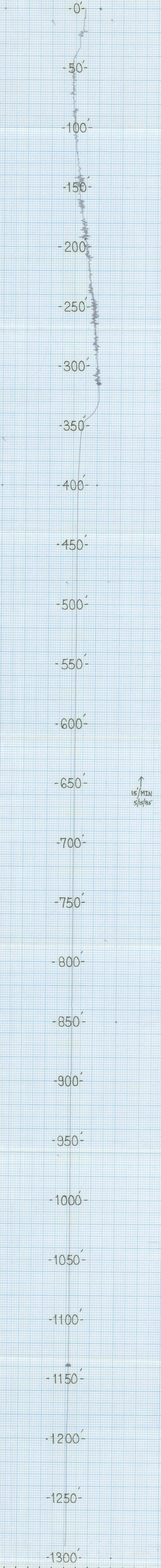
Drilling Method: Rot.  Air  CT  Auger  Other \_\_\_\_\_  
 T. Depth - Driller \_\_\_\_\_ T. Depth - Logger 1323'  
 Casing Depth Driller \_\_\_\_\_ Casing Depth Logger 318'/640'  
 Bit Size \_\_\_\_\_ Casing Dia. I.D. 7.8"  
 Hole Dia. 8" From 0' To 1323' Dia. From \_\_\_\_\_ To \_\_\_\_\_  
 Type of Casing STEEL Casing Thickness 0.2"  
 Type of Screen OPENHOLE Screen Int. From \_\_\_\_\_ To \_\_\_\_\_  
 Type of Packing \_\_\_\_\_ Well Use MONITOR  
 Static Water Level \_\_\_\_\_ Date \_\_\_\_\_  
 Yield Flow STATIC Pump \_\_\_\_\_

TYPE OF SURVEYS RUN

Lateral G'  Density   
 Caliper  DCI   
 Flow meter  Fluid Sampler   
 16" 64" normals  Temperature   
 Neutron  Delta Temp.   
 Natural Gamma  SP   
 Fluid Resistivity

Comments: SEPARATED CASING 318' to 522' HUNG ON WAY DOWN SEVERAL TIMES/ NO FLOWLOGS DUE TO HANGING/ FINISH LOGS AT LATE DATE

HIF-16  
 FLUID  
 RESISTIVITY  
 OHMMETERS



OHMMETERS  
 FLUID  
 RESISTIVITY

RECORDED (CHART) GRAPHIC CONTROL CORPORATION BUFFALO, NEW YORK  
 6339  
 RECORDED (CHART) GRAPHIC CONTROL CORPORATION BUFFALO, NEW YORK  
 6339  
 RECORDED (CHART) GRAPHIC CONTROL CORPORATION BUFFALO, NEW YORK  
 6339  
 RECORDED (CHART) GRAPHIC CONTROL CORPORATION BUFFALO, NEW YORK  
 6339



WELL LOG

WELL LOCATION

County HIGHLANDS  
 Station I. D. Q550000016  
 Date 5/15/85 Well No. HIF-16  
 Latitude \_\_\_\_\_ Longitude \_\_\_\_\_  
 \_\_\_\_\_ Section \_\_\_\_\_ Township \_\_\_\_\_ Range \_\_\_\_\_  
 Owner LYKES CITRUS Phone \_\_\_\_\_  
 Driller \_\_\_\_\_ Date Drilled \_\_\_\_\_

DATUM

K.B. \_\_\_\_\_ L.S. \_\_\_\_\_ T.O.C. +1.0'

FLUID QUALITY

Date \_\_\_\_\_ Time \_\_\_\_\_ Source of Sample \_\_\_\_\_  
 Cl \_\_\_\_\_ mg/l Type of Fluid \_\_\_\_\_  
 Temp. \_\_\_\_\_ °C Field Density \_\_\_\_\_ @ \_\_\_\_\_ °C  
 T.D.S. \_\_\_\_\_ mg/l Spec. Cond. \_\_\_\_\_ umhos/cm  
 Logged By: E. DAUENHAUER Witnessed By: D. BACON  
 Comments: SEPARATED CASING 318' to 522' HUNG ON  
WAY DOWN SEVERAL TIMES / NO FLOWLOGS DUE TO  
HANGING FINISH LOGS AT LATER DATE

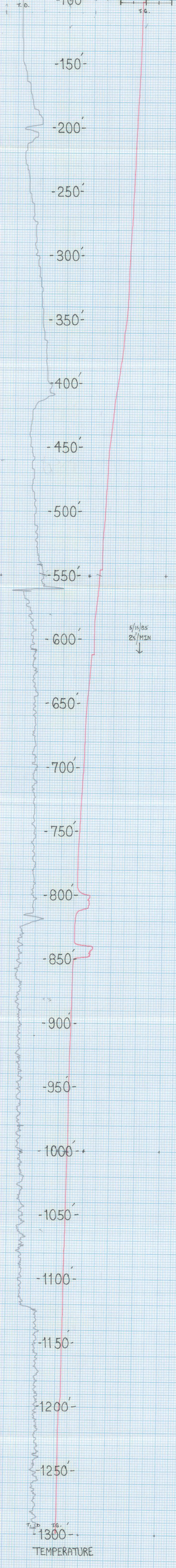
WELL CONSTRUCTION

Drilling Method: Rot. Air CT Auger Other \_\_\_\_\_  
 T. Depth - Driller \_\_\_\_\_ T. Depth - Logger 1323'  
 Casing Depth Driller \_\_\_\_\_ Casing Depth Logger 318'/690'  
 Bit Size \_\_\_\_\_ Casing Dia. I.D. 7.8"  
 Hole Dia. 8" From 0' To 1323' Dia. From \_\_\_\_\_ To \_\_\_\_\_  
 Type of Casing STEEL Casing Thickness 0.2"  
 Type of Screen OPENHOLE Screen Int. From \_\_\_\_\_ To \_\_\_\_\_  
 Type of Packing \_\_\_\_\_ Well Use MONITOR  
 Static Water Level \_\_\_\_\_ Date \_\_\_\_\_  
 Yield Flow STATIC Pump \_\_\_\_\_

TYPE OF SURVEYS RUN

Lateral 6" Caliper	( )	Density	( )
Flow meter	( )	Fluid Sampler	( )
16" 64" normals	(X)	Temperature	( )
Neutron	( )	Delta Temp.	( )
Natural Gamma	(X)	SP	(X)
Fluid Resistivity	(X)		

HIF-16 TEMPERATURE DIFFERENTIAL GRADIENT







WELL LOG

WELL LOCATION

County HIGHLANDS  
Station I. D. Q550000016  
Date 5/15/85 Well No. HIF-56  
Latitude \_\_\_\_\_ Longitude \_\_\_\_\_  
\_\_\_\_\_/\_\_\_\_\_/\_\_\_\_\_/Section \_\_\_\_\_ Township \_\_\_\_\_ Range \_\_\_\_\_  
Owner LYKES CITRUS Phone \_\_\_\_\_  
Driller \_\_\_\_\_ Date Drilled \_\_\_\_\_

DATUM

K.B. \_\_\_\_\_ L.S. \_\_\_\_\_ T.O.C. +1.0'

FLUID QUALITY

Date \_\_\_\_\_ Time \_\_\_\_\_ Source of Sample \_\_\_\_\_  
Cl \_\_\_\_\_ mg/l Type of Fluid \_\_\_\_\_  
Temp. \_\_\_\_\_ °C Field Density \_\_\_\_\_ @ \_\_\_\_\_ °C  
T.D.S. \_\_\_\_\_ mg/l Spec. Cond. \_\_\_\_\_ umhos/cm

Logged By: E. DAUENHAUER Witnessed By: D. BACON

Comments: SEPARATED CASING 318' TO 522' HUNG ON WAY DOWN SEVERAL TIMES / NO FLOWLOGS DUE TO HANGING / FINISH LOGS AT LATER DATE

WELL CONSTRUCTION

Drilling Method: Rot. Air CT Auger Other \_\_\_\_\_  
T. Depth - Driller \_\_\_\_\_ T. Depth - Logger 1323'  
Casing Depth Driller \_\_\_\_\_ Casing Depth Logger 318'/640'  
Bit Size \_\_\_\_\_ Casing Dia. I.D. 7.8"  
Hole Dia. 8" From 0' To 1323' Dia. From \_\_\_\_\_ To \_\_\_\_\_  
Type of Casing STEEL Casing Thickness 0.2"  
Type of Screen OPENHOLE Screen Int. From \_\_\_\_\_ To \_\_\_\_\_  
Type of Packing \_\_\_\_\_ Well Use MONITOR  
Static Water Level \_\_\_\_\_ Date \_\_\_\_\_  
Yield Flow STATIC Pump \_\_\_\_\_

TYPE OF SURVEYS RUN

Lateral 6' ( ) Density ( )  
Caliper ( ) cci ( )  
Flow meter ( ) Fluid Sampler ( )  
16', 64" normals (X) Temperature ( )  
Neutron ( ) Delta Temp. ( )  
Natural Gamma (X) SP (X)  
Fluid Resistivity (X)

