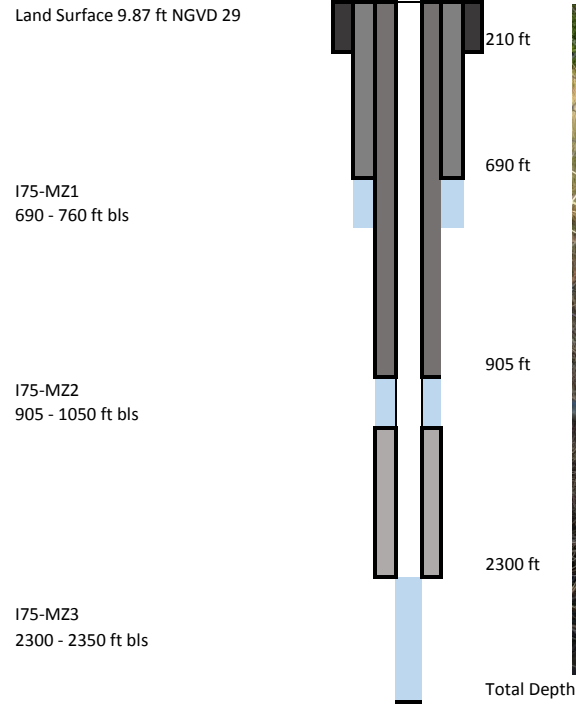


Site Name **I75M2**
 Station Names I75-MZ1, I75-MZ2 and I75-MZ3
 Aquifers Lower Hawthorn, Upper Floridan and Lower Floridan
 FDEP Identifier Unknown
 Date of this summary 5/30/2017

Lat / Long: 261013.048 / 814350.032
 County: Collier
 Wellhead Repair: Sandblasting



Survey data: 3/30/2016 NGVD29 offset +1.29
 Reference elevations: 13.335 ft NAVD88, 13.555 ft NAVD88 and 13.265 ft NAVD88
 Access Agreement: Perpetual Easement - FDOT 1/6/2017

References: Bennett, M.W., 2001. Hydrogeological Investigation of the Floridan Aquifer System at the I75 Canal Site, Collier County, Florida. Technical Publication WS-7. SFWMD, West Palm Beach, 60p.

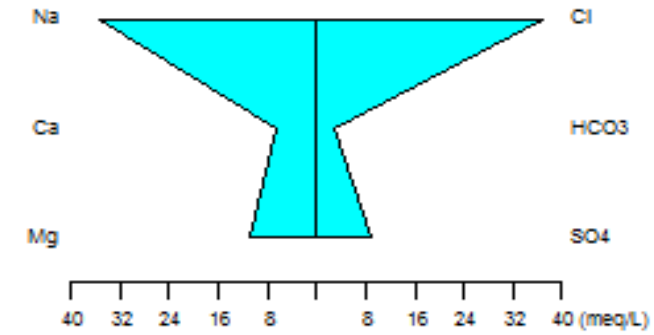
SFWMD Survey 3/30/2016

I75-MZ1	
Casing Material:	Fiberglass
Diameter:	2 inches
Data Range:	1995 - 2016
Sampling Events Analyzed:	19
Water Type	Na-Cl

Field Parameter Averages I75-MZ1	
Field pH:	7.94
Specific Conductance (uS/cm)	5590
TDS (mg/L)	3233
Water Level (ft NGVD 29)	33.98

I75-MZ1 Ionic Ranges		
Parameter	Min (mg/L)	Max (mg/L)
Potassium (K)	31	43
Sodium (Na)	749	1060
Calcium (Ca)	97	238
Magnesium (Mg)	4	157
Chloride (Cl)	1306	1848
Bicarbonate (HCO3)	38	256
Sulfate (SO4)	206	563

I75-MZ1,2/23/2016

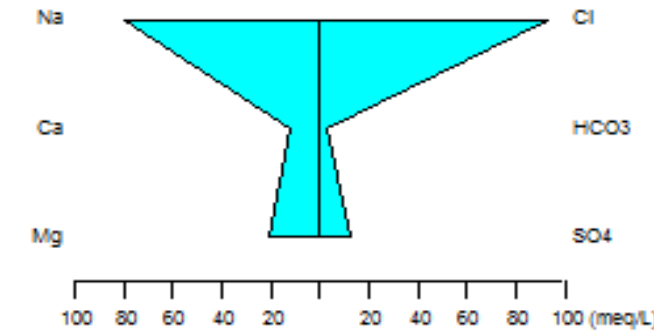


I75-MZ2	
Casing Material:	Stainless Steel
Diameter:	12 inches
Data Range:	1995 - 2016
Sampling Events Analyzed:	20
Water Type	Na-Cl

Field Parameter Averages I75-MZ2	
Field pH:	7.84
Specific Conductance (uS/cm)	12473
TDS (mg/L)	7460
Water Level (ft NGVD 29)	32.91

I75-MZ2 Ionic Ranges		
Parameter	Min (mg/L)	Max (mg/L)
Potassium (K)	55	80
Sodium (Na)	1661	2220
Calcium (Ca)	137	274
Magnesium (Mg)	222	304
Chloride (Cl)	3005	4300
Bicarbonate (HCO3)	18	231
Sulfate (SO4)	380	433

I75-MZ2,2/23/2016



I75-MZ3	
Casing Material:	Fiberglass
Diameter:	2 3/8 inches
Data Range:	2004 - 2016
Sampling Events Analyzed:	17
Water Type	Na-Cl

Field Parameter Averages I75-MZ3	
Field pH:	7.39
Specific Conductance (uS/cm)	53041
TDS (mg/L)	35087
Water Level (ft NGVD 29)	9.18

I75-MZ3 Ionic Ranges		
Parameter	Min (mg/L)	Max (mg/L)
Potassium (K)	363	520
Sodium (Na)	10390	11880
Calcium (Ca)	414	560
Magnesium (Mg)	1150	1367
Chloride (Cl)	18400	20165
Bicarbonate (HCO3)	95	146
Sulfate (SO4)	2320	4600

I75-MZ3,2/23/2016

