

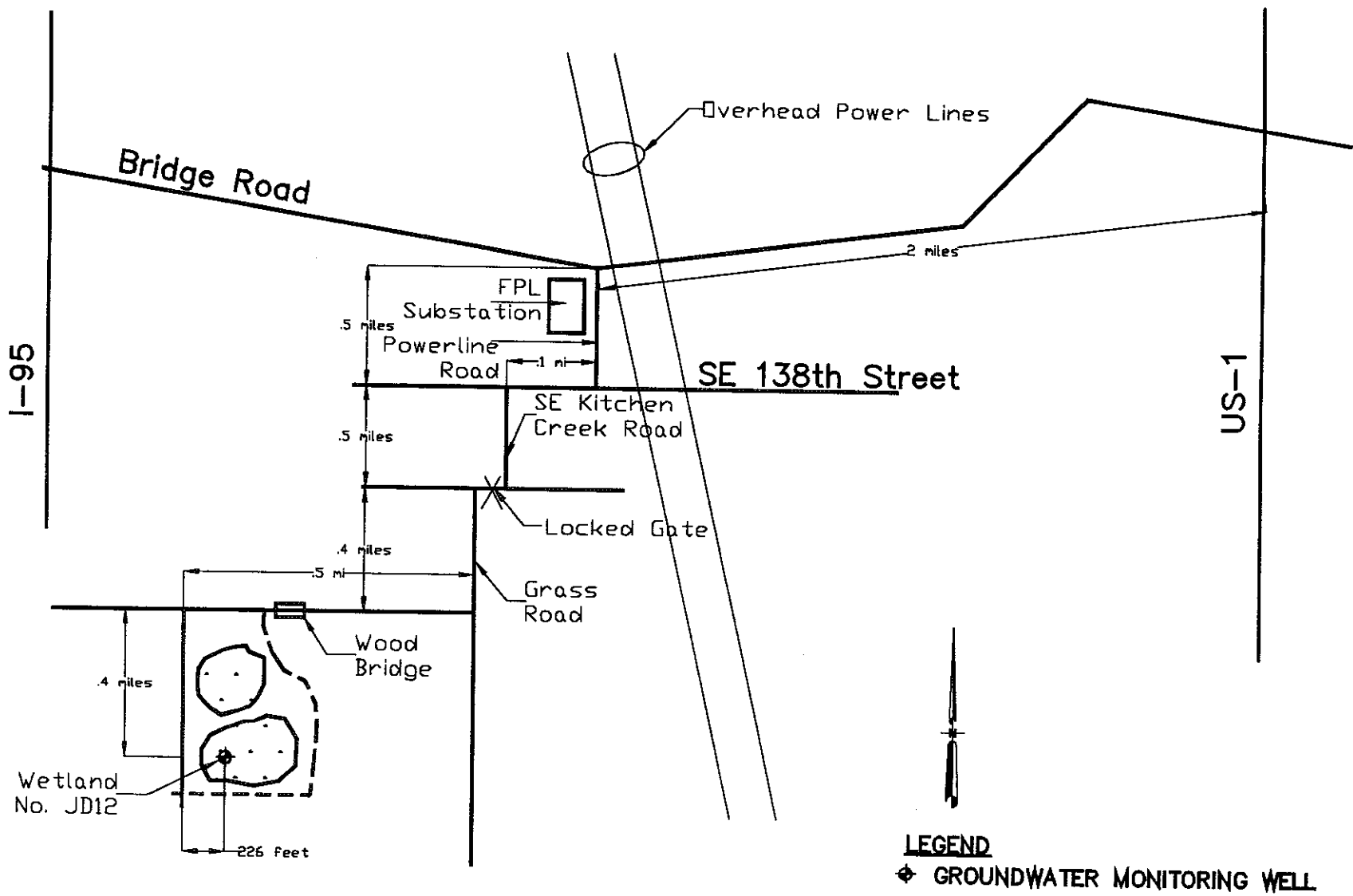


<b>BORING/WELL NO.</b> JD12		<b>BORING LOG</b>	
<b>PROJECT NO./NAME</b> 1033/Isolated Wetlands Shallow Drilling Program		<b>LOCATION</b> Jonathan Dickinson State Park, Martin County, Florida	
<b>DRILLING CONTRACTOR/DRILLER</b> Precision Drilling/Robert Miller			
<b>GEOLOGIST/OFFICE</b> Steve Krupa/South Florida Water Management District			
<b>DRILLING EQUIPMENT/METHOD</b> Tripod/SPT		<b>SIZE/TYPE OF BIT</b> 3'-5" dia casing, driven and washed	<b>SAMPLING METHOD</b> Split Spoon
<b>START/FINISH DATE</b> 1/17/97-1/17/97			
<b>WELL INSTALLED?</b> YES <input checked="" type="checkbox"/> NO <input type="checkbox"/>	<b>CASING MAT./DIA.</b> Sch.40 monoflex PVC/2"	<b>SCREEN:</b> TYPE Slotted MAT. PVC LENGTH 2' DIA. 2" SLOT SIZE .010	
<b>ELEVATION OF:</b> (FT. ABOVE M.S.L.)	<b>GROUND SURFACE</b> 3.25 ft	<b>TOP OF WELL CASING</b> 19.95 ft/21.95 ft	<b>TOP &amp; BOTTOM SCREEN</b> DATE 1/24/97
<b>REMARKS:</b>			

Depth (ft)	Sample Type & Recovery Number	Penetration Resistance Blows/6" N-Value	Unified Classification	LOG OF TEST BORING		Penetration Resistance (Blows/Foot)	Graphic Litho Log	Well Construction
				FIELD DESCRIPTION	Munsell Field Color			
0	S1	8 6 6 6 12	PT	3 in. organic material, 16 in. fine sand	0.8 2.5/N	15		
2	S2	3 3 5 8 8	SM	4 in. fine sand, 12 in. fine sand w/silt size particles	2.0 10 YR 8/1 = 10 YR 3/1	35		
4	S3	6 10 7 8 17	SP-SW	Medium grading to fine sand	4.0 10 YR 6/1	55		
6	S4	17 9 6 5 15	SM	6 in. fine sand grading to 15 in. medium sand	6.0 10 YR 8/1 = 7.5 YR 7/1	75		
8	S5	8 10 10 10 20	SM	6 in. fine sand grading to 14 in. fine sand w/ silt size particles	8.0 7.5 YR 8/1 = 5 YR 5/3	85		
10	S6	4 5 7 4 12	SP-SW	8 in. fine sand grading to 11 in. medium to fine sand	10.0 7.5 YR 8/1 = 2.5 YR 4/4 10 R 3/1	95		
12	S7	13 18 17 24 35	SP	Fine sand	14.0 1 2.5/N	100		
14	S8	9 15 31 40 46	SP-SW	Medium to fine grained sand w/ heavy organic staining	16.0 1 2.5/N			
16	S9			No sample, washed casing too deep				
18	S10	12 19 19 20 38	SP	Fine sand	22.0 1 2.5/N = 10 R 4/1			
20								

E:\ETLA 9/10/97

Fine Sand	Medium Sand	Bentonite Pellets	Cement Grout	Silt/Clay w/ shell
Organic Material	Clay	Split Spoon	Percent Recovery	No Recovery



**ENGINEERED ENVIRONMENTAL SOLUTIONS, INC.**

1301 NW 4th Street, Boca Raton, FL 33486 Tel/Fax 561-394-3969, Beeper 708-0165



**SITE LOCATION MAP - JD12**

ISOLATED WETLANDS DRILLING PHASE 1  
SOUTH FLORIDA WATER MANAGEMENT DISTRICT

3

CONTRACT NO.: C-7665 FILENAME: JD12.DWG DATE: 3/28/97 SCALE: NTS

c:\projects\wetlands1\JD12.dwg