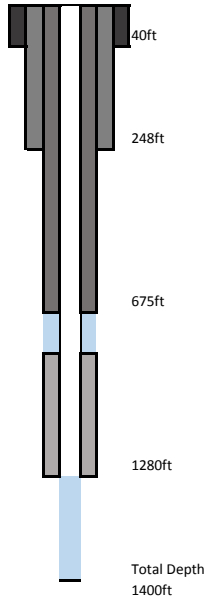


Site Name **KEYWST/KWDZMW-1**
 Station Names KW-MZL, KW-MZU
 Aquifers UFA, IAS
 FDEP Identifier Unknown
 Date of this summary 8/8/2017

Lat / Long: 243406.603/814746.725
 County: Monroe
 Wellhead Repair Date: Unknown

Land surface elevation
 7.65ft NGVD29



KW-MZU Monitor Zone
 675-725ft

KW-MZL Monitor Zone
 1280-1320ft



Date of Photo (2017)

Survey data: Survey Addendum and 6/21/2017 NGVD offset 1.345ft
 Reference elevations: KW-MZU(GW1)-7.9ft NAVD88, KW-MZL(GW2)-9.07 NAVD88
 Access Agreement: Owned by City of Key West Waste Water Treatment Plant -Active Agreement-2001 w/automatic 5-year extension
 References: SFWMD Survey date 6/15/2017

Upper Monitor Zone KW-MZU

Casing Material:	Steel
Diameter:	16-inch
Data Range:	2000
Sampling Events Analyzed:	1
Water Type	Na-Cl

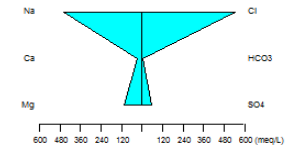
Field Parameter Averages KW-MZU

Field pH:	7.73
Specific Conductance (uS/cm)	53870
Temperature (Celcius)	25.06
TDS (mg/L)	34540
Water Level (ft NGVD 29)	2.66

KW-MZU Ionic Ranges

Parameter	Concentration (mg/L)
Potassium (K)	390
Sodium (Na)	10581
Calcium (Ca)	598
Magnesium (Mg)	1248
Chloride (Cl)	19246
Bicarbonate (HCO3)	137
Sulfate (SO4)	2703

KW-MZU,7/13/2000



Lower Monitor Zone KW-MZL

Casing Material:	Fiberglass
Diameter:	6.62-inch
Data Range:	2000
Sampling Events Analyzed:	1
Water Type	Na-Cl

Field Parameter Averages KW-MZL

Field pH:	7.73
Specific Conductance (uS/cm)	53133
Temperature (Celcius)	23.64
TDS (mg/L)	34680
Water Level (ft NGVD 29)	6.38

KW-MZL Ionic Ranges

Parameter	Concentration (mg/L)
Potassium (K)	401
Sodium (Na)	9913
Calcium (Ca)	537
Magnesium (Mg)	1234
Chloride (Cl)	19426
Bicarbonate (HCO3)	140
Sulfate (SO4)	2674

KW-MZL,7/13/2000

