



# RMBAKER LLC

WELL L-2644  
UWI L-2644

Geology and Geophysics

8600 Oldbridge Lane

Orlando, FL 32819

mobile ph 407-733-8958

[rob@rmbaker.com](mailto:rob@rmbaker.com)

[www.rmbaker.com](http://www.rmbaker.com)

PROFESSIONAL LICENSES

Geologist PG2186

Geology Business GR458

HEADER NOTES:

COMP	SFWMD	
LOC	CAPE CORAL	
FLD	CAPE CORAL	
CNTY	LEE	
STAT	FL	
PROV	FL	
CTRY	USA	
LATI	26 34 43.01624	X
LONG	-82 2 14.99316	Y
GDAT	WGS84	HDAT
SEC		ELEV
TWP		V DAT
RGE		

ALL SERVICES:  
NATURAL GAMMA  
WATER QUALITY

PERMANENT DATUM:  
LOG MEASURED FROM: GROUND SURFACE - 2.375 FT BELOW SURVEY REF.

DRILLING MEASURED FROM:

DATE	25 Feb 20	TYPE FLUID IN HOLE	WATER
RUN No	1	LOGGING SPEED (FT/MIN)	25
TYPE LOG	WATER QUALITY	TROLLING DIRECTION	DOWN
DEPTH-DRILLER	180	PUMPING RATE (GPM)	N/A
DEPTH-LOGGER	139.6		
DRILLER			
RECORDED BY	RMB		
SRVC	RMBAKER LLC	API	N/A
WITNESSED BY	SFWMD	LIC	N/A

BOREHOLE RECORD					
RUN NO.	BIT	FROM	TO	CASING RECORD	
	3.875	133	180	SIZE	MAT.
				4	PVC
				FROM	TO
					133

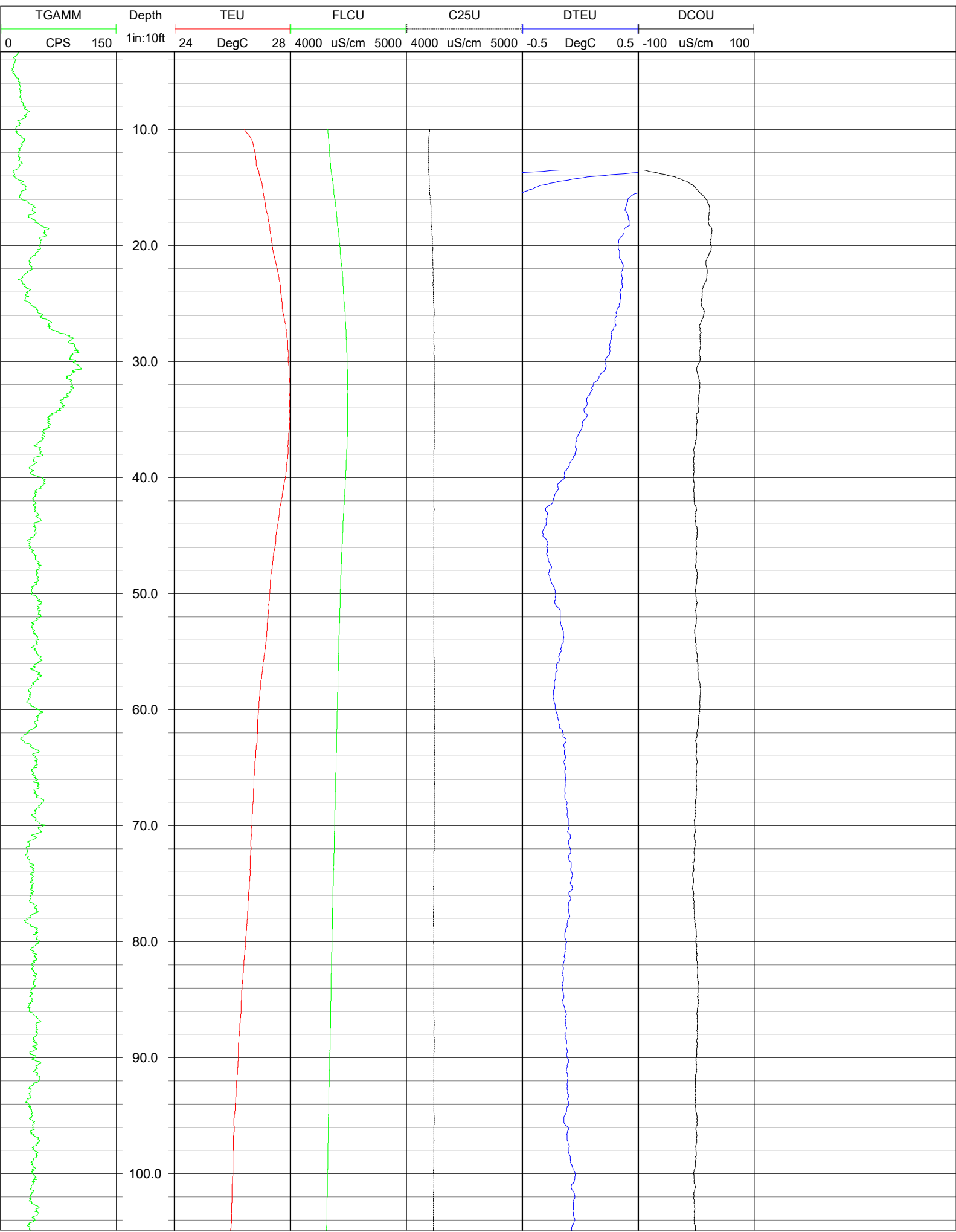
PROJECT NOTES:  
Monitoring reference elevation was 2.375 feet above ground surface.  
  
Obstruction found at 139.6 feet.

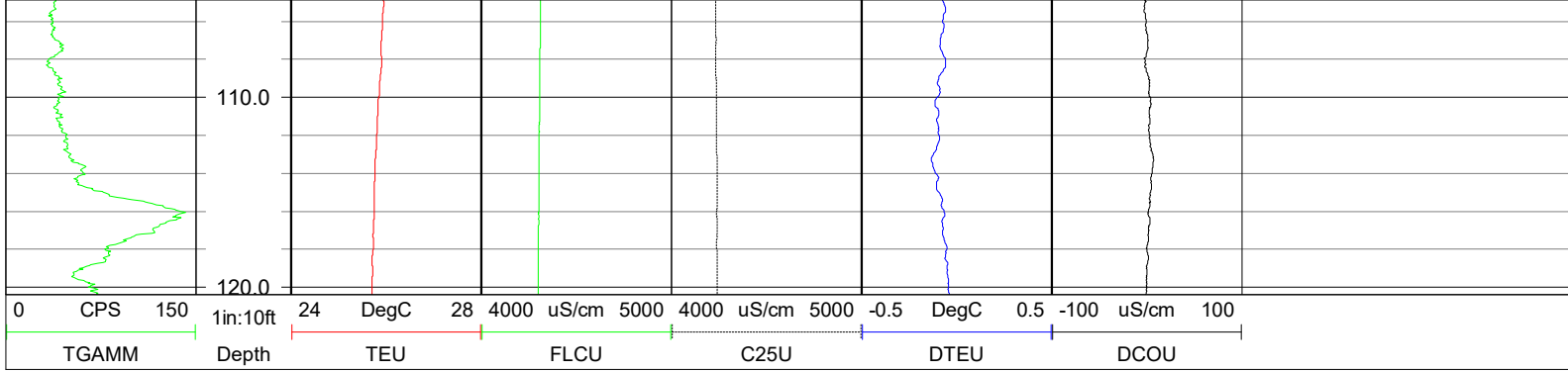
### LOG CODES

3-arm caliper	<b>CAL</b>	long normal resistivity	<b>RLN</b>	deep induction conductivity	<b>IDC</b>
natural gamma (CPS)	<b>GAMM</b>	8 inch resistivity	<b>R8</b>	shallow induction conductivity	<b>ISC</b>
spontaneous potential	<b>ESP</b>	32 inch resistivity	<b>R32</b>	sonic interval velocity	<b>DT</b>
single point resistance	<b>RES</b>	deep induction resistivity	<b>ILD</b>	sonic porosity (RHG method)	<b>SPHI</b>
short normal resistivity	<b>RSN</b>	shallow induction resistivity	<b>ILM</b>	repeat designation	<b>R</b>

### WATER QUALITY LOG CODES

static fluid temperature	<b>TEU</b>	dynamic fluid conductivity	<b>FLCP</b>	caliper	<b>CAL</b>
dynamic fluid temperature	<b>TEP</b>	static differential cond.	<b>DCOU</b>	repeat designation	<b>R</b>
static differential temperature	<b>DTEU</b>	dynamic differential cond.	<b>DCOP</b>	natural gamma	<b>GAMM</b>
dynamic differential temp.	<b>DTEP</b>	static specific conductance	<b>C25U</b>	calibration correction	<b>C</b>





**NOTES:**

While due care has been exercised in the performance of these measurements and observations, in accordance with methodologies utilized by the general practitioner, RMLBAKER LLC can make no representations, warranties, or guarantees with respect to latent or concealed conditions that may exist, which may be beyond the detection capabilities of the methodologies used, or that may extend beyond the areas and depths surveyed.

The geophysical well logs show subsurface conditions as they existed at the dates and locations shown, and it is not warranted that they are representative of subsurface conditions at other locations and times. If, at any time, different subsurface conditions from those observed are determined to be present, we must be advised and allowed to review and revise our observations if necessary.

Florida Licensed Geology Business GB 458

**END OF LOG**