



**RMBAKER LLC**  
Geology and Geophysics

WELL L-4820  
UWI L-4820

PROFESSIONAL LICENSES

Geologist PG2186  
Geology Business GR458

8600 Oldbridge Lane  
Orlando, FL 32819  
mobile ph 407-733-8958

**rob@rmbaker.com**  
**www.rmbaker.com**

HEADER NOTES:

COMP	SFWMD		
LOC	CAPE CORAL		
FLD	CAPE CORAL		
CNTY	LEE		
STAT	FL		
PROV	FL		
CTRY	USA		
LATI	26 40 57.01698	X	
LONG	-81 57 24.99256	Y	
GDAT	WGS84	HDAT	
SEC		ELEV	
TWP		V DAT	
RGE			

ALL SERVICES:  
NATURAL GAMMA  
WATER QUALITY  
DUAL INDUCTION  
CALIPER

PERMANENT DATUM:  
LOG MEASURED FROM: GROUND SURFACE - 2 FT BELOW SURVEY REF.

DRILLING MEASURED FROM:

DATE	24 Feb 20	TYPE FLUID IN HOLE	WATER
RUN No	1	LOGGING SPEED (FT/MIN)	25
TYPE LOG	COMPOSITE	TROLLING DIRECTION	BOTH
DEPTH-DRILLER	190	PUMPING RATE (GPM)	N/A
DEPTH-LOGGER	180.5		
DRILLER			
RECORDED BY	RMB		
SRVC	RMBAKER LLC	API	N/A
WITNESSED BY	SFWMD	LIC	N/A

BOREHOLE RECORD		CASING RECORD					
RUN NO.	BIT FROM	TO	SIZE	MAT.	FROM	TO	
1	5	120.4	180.5	4	PVC	0	120.4

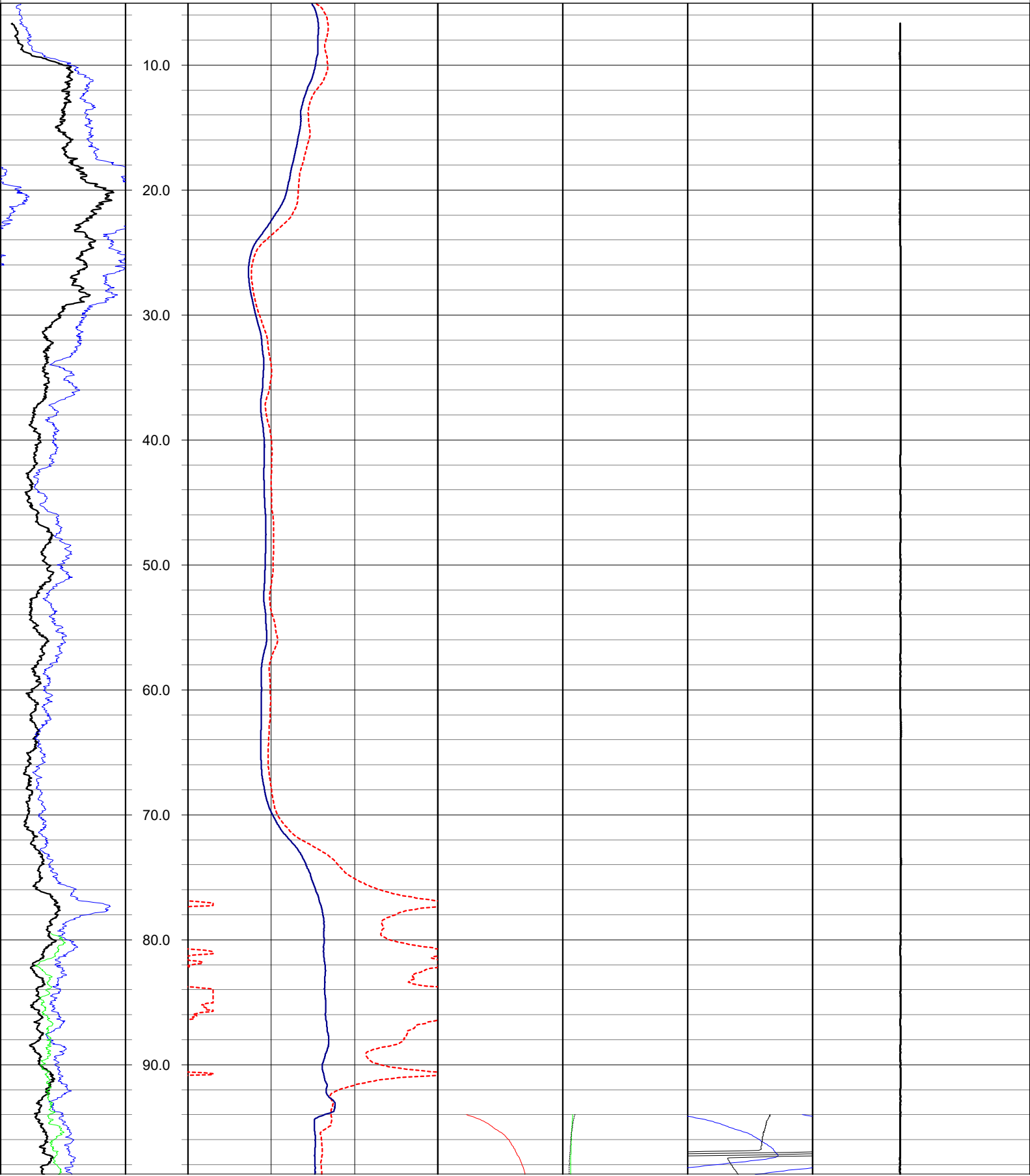
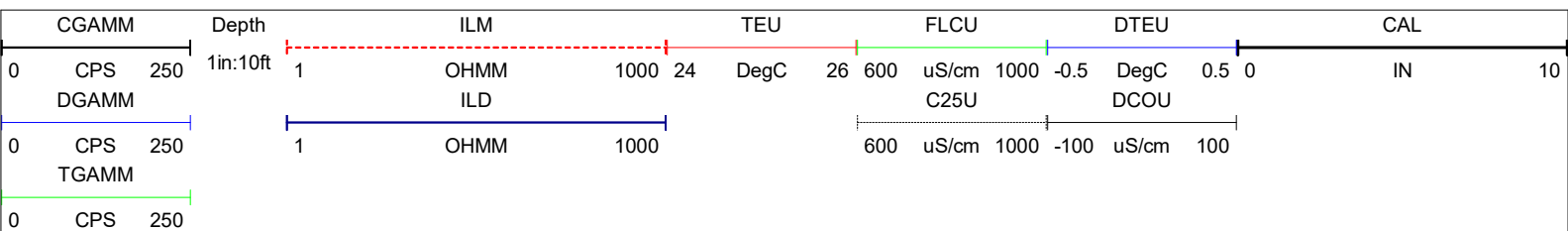
PROJECT NOTES:  
Monitoring reference elevation was 2 feet above ground surface.

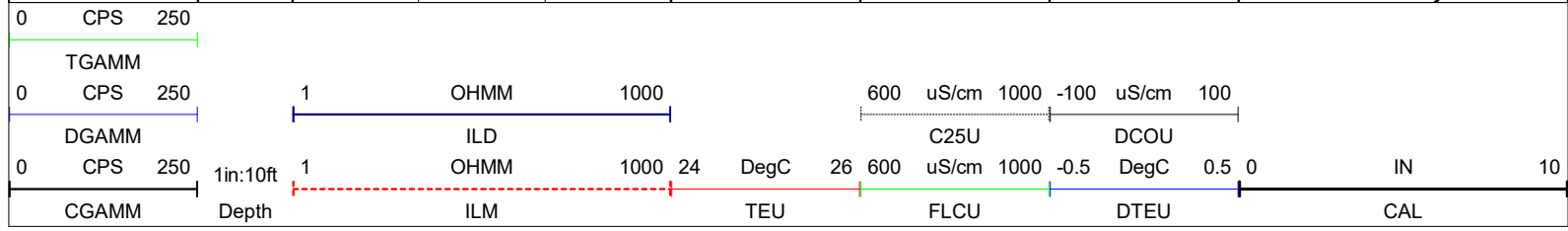
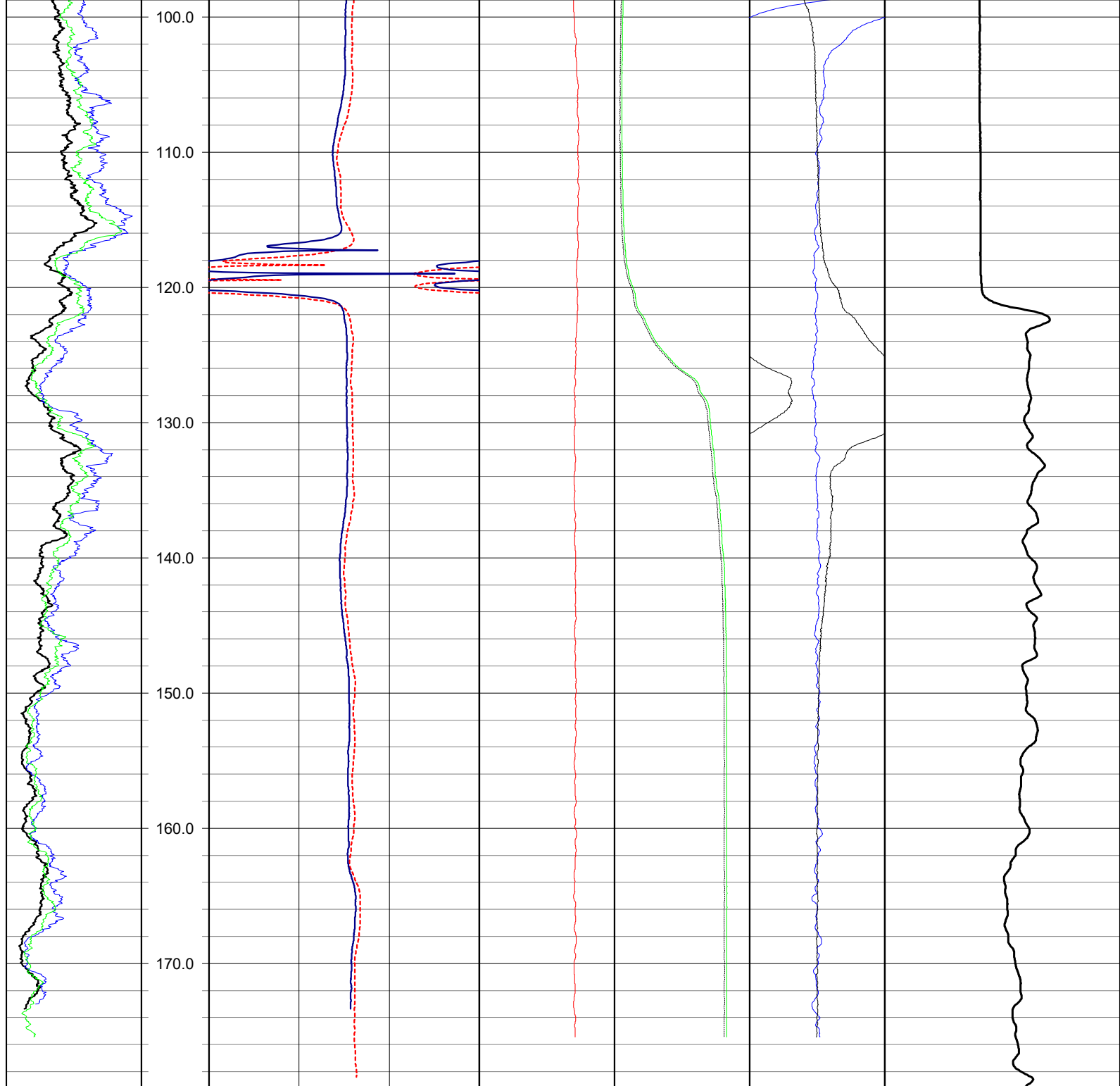
**LOG CODES**

3-arm caliper	<b>CAL</b>	long normal resistivity	<b>RLN</b>	deep induction conductivity	<b>IDC</b>
natural gamma (CPS)	<b>GAMM</b>	8 inch resistivity	<b>R8</b>	shallow induction conductivity	<b>ISC</b>
spontaneous potential	<b>ESP</b>	32 inch resistivity	<b>R32</b>	sonic interval velocity	<b>DT</b>
single point resistance	<b>RES</b>	deep induction resistivity	<b>ILD</b>	sonic porosity (RHG method)	<b>SPHI</b>
short normal resistivity	<b>RSN</b>	shallow induction resistivity	<b>ILM</b>	repeat designation	<b>R</b>

**WATER QUALITY LOG CODES**

static fluid temperature	<b>TEU</b>	dynamic fluid conductivity	<b>FLCP</b>	caliper	<b>CAL</b>
dynamic fluid temperature	<b>TEP</b>	static differential cond.	<b>DCOU</b>	repeat designation	<b>R</b>
static differential temperature	<b>DTEU</b>	dynamic differential cond.	<b>DCOP</b>	natural gamma	<b>GAMM</b>
dynamic differential temp.	<b>DTEP</b>	static specific conductance	<b>C25U</b>	calibration correction	<b>C</b>





**NOTES:**  
 While due care has been exercised in the performance of these measurements and observations, in accordance with methodologies utilized by the general practitioner, RMLBAKER LLC can make no representations, warranties, or guarantees with respect to latent or concealed conditions that may exist, which may be beyond the detection capabilities of the methodologies used, or that may extend beyond the areas and depths surveyed.  
 The geophysical well logs show subsurface conditions as they existed at the dates and locations shown, and it is not warranted that they are representative of subsurface conditions at other locations and times. If, at any time, different subsurface conditions from those observed are determined to be present, we must be advised and allowed to review and revise our observations if necessary.

Florida Licensed Geology Business GB 458

**END OF LOG**