



RMBAKER LLC

WELL L-581
UWI L-581

Geology and Geophysics

8600 Oldbridge Lane

Orlando, FL 32819

mobile ph 407-733-8958

PROFESSIONAL LICENSES
Geologist PG2186
Geology Business GR458

rob@rmbaker.com

www.rmbaker.com

HEADER NOTES:

COMP	SFWMD		
LOC	CAPE CORAL		
FLD	CAPE CORAL		
CNTY	LEE		
STAT	FL		
PROV	FL		
CTRY	USA		
LATI	26 35 33.21633	X	
LONG	-81 59 20.59281	Y	
GDAT	WGS84	HDAT	
SEC		ELEV	
TWP		V DAT	
RGE			

ALL SERVICES:
NATURAL GAMMA
DUAL INDUCTION
WATER QUALITY

PERMANENT DATUM:
LOG MEASURED FROM: GROUND SURFACE - 2.92 FT BELOW SURVEY REF.

DRILLING MEASURED FROM:

DATE	24 Feb 20	TYPE FLUID IN HOLE	WATER
RUN No	1	LOGGING SPEED (FT/MIN)	25
TYPE LOG	COMPOSITE	TROLLING DIRECTION	BOTH
		PUMPING RATE (GPM)	N/A
DEPTH-DRILLER	177		
DEPTH-LOGGER	171.25		
DRILLER			
RECORDED BY	RMB		
SRVC	RMBAKER LLC	API	N/A
WITNESSED BY	SFWMD	LIC	N/A

BOREHOLE RECORD				CASING RECORD			
RUN NO.	BIT	FROM	TO	SIZE	MAT.	FROM	TO
	3.875	115	177	4	PVC	0	115

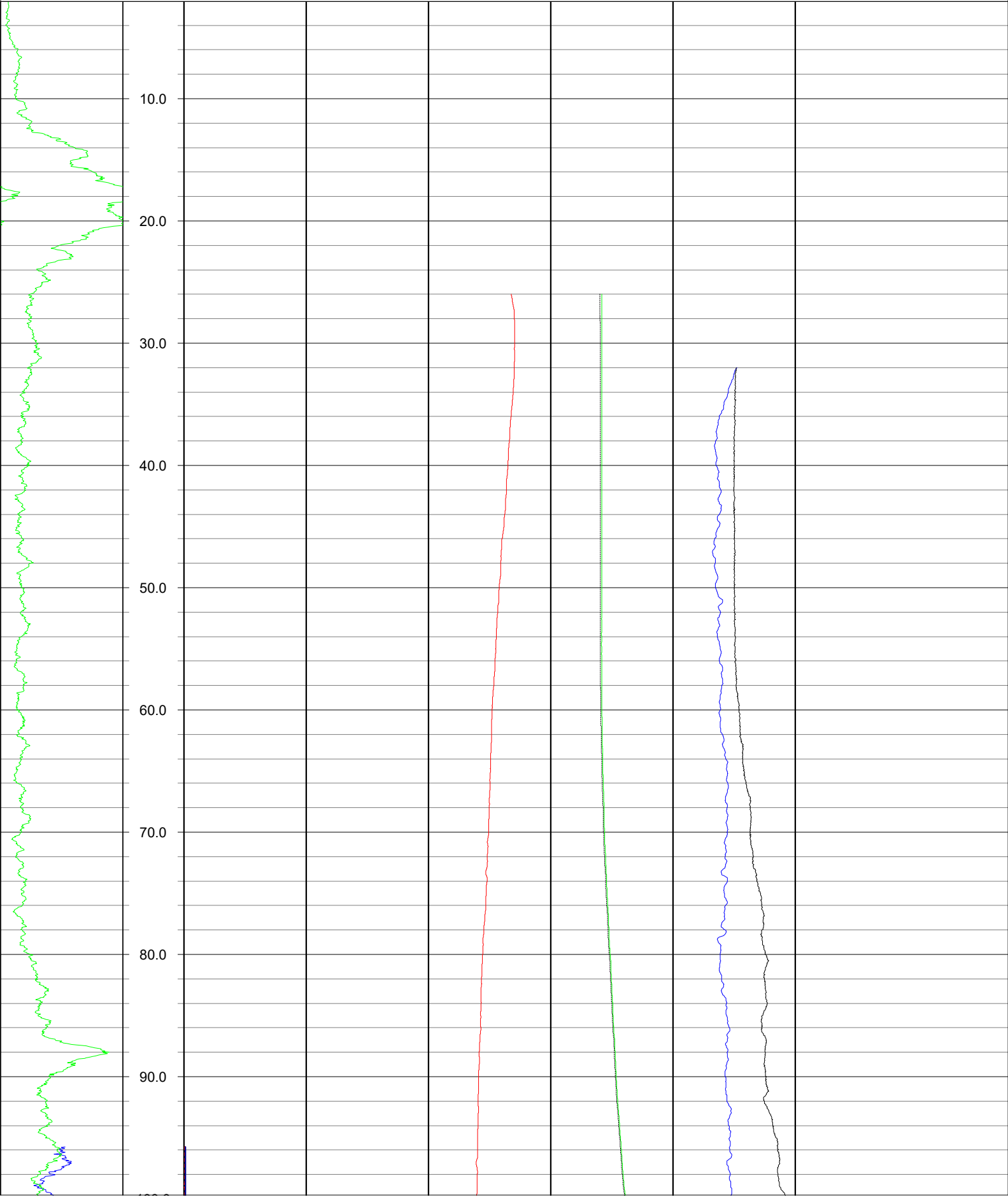
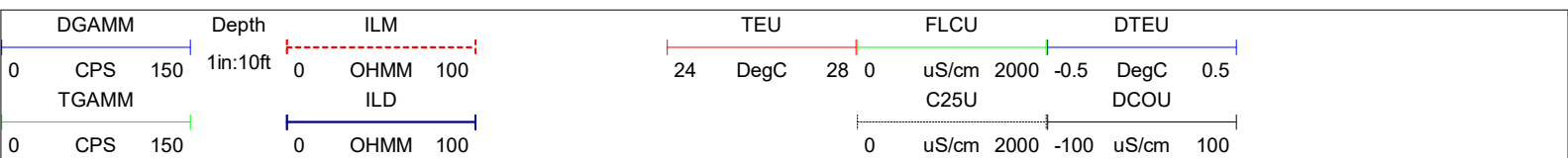
PROJECT NOTES:
Monitoring reference elevation was 2.92 feet above ground surface.
Casing depth could not be confirmed, but based on centralizer response in resistivity data a depth of 115 feet seems likely.

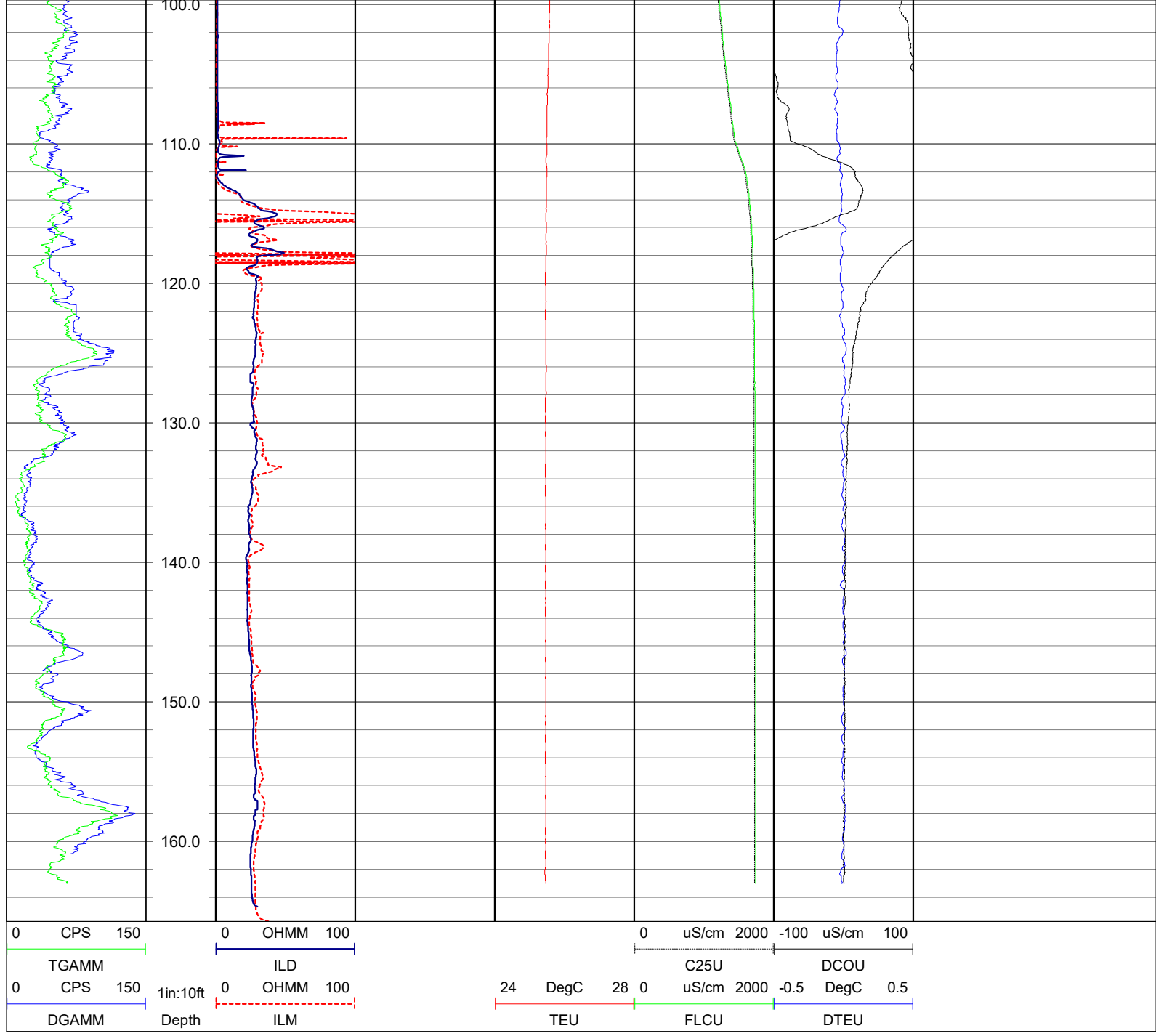
LOG CODES

3-arm caliper	CAL	long normal resistivity	RLN	deep induction conductivity	IDC
natural gamma (CPS)	GAMM	8 inch resistivity	R8	shallow induction conductivity	ISC
spontaneous potential	ESP	32 inch resistivity	R32	sonic interval velocity	DT
single point resistance	RES	deep induction resistivity	ILD	sonic porosity (RHG method)	SPHI
short normal resistivity	RSN	shallow induction resistivity	ILM	repeat designation	R

WATER QUALITY LOG CODES

static fluid temperature	TEU	dynamic fluid conductivity	FLCP	caliper	CAL
dynamic fluid temperature	TEP	static differential cond.	DCOU	repeat designation	R
static differential temperature	DTEU	dynamic differential cond.	DCOP	natural gamma	GAMM
dynamic differential temp.	DTEP	static specific conductance	C25U	calibration correction	C





NOTES:
 While due care has been exercised in the performance of these measurements and observations, in accordance with methodologies utilized by the general practitioner, RMLBAKER LLC can make no representations, warranties, or guarantees with respect to latent or concealed conditions that may exist, which may be beyond the detection capabilities of the methodologies used, or that may extend beyond the areas and depths surveyed.
 The geophysical well logs show subsurface conditions as they existed at the dates and locations shown, and it is not warranted that they are representative of subsurface conditions at other locations and times. If, at any time, different subsurface conditions from those observed are determined to be present, we must be advised and allowed to review and revise our observations if necessary.

Florida Licensed Geology Business GB 458

END OF LOG