

**Form 85-1**  
**Schlumberger**  
**BOREHOLE COMPENSATED SONIC LOG**

COMPANY: **Total Learning, Inc.**  
 WELL: **Fia Farms Development Co. (44351)**  
 FIELD: **Wildcat**  
 COUNTY: **Lee** STATE: **Fla**

LOCATION: **1037 EAL, 1088, FEE**  
 WELL: **FLORIDA GEOLOGICAL SURVEY**  
 DATE: **11-11-76**  
 TIME: **10:45 AM**  
 BY: **R. B. K. B.**

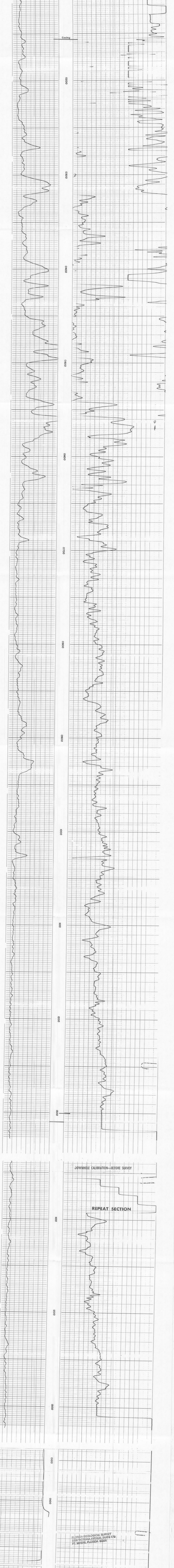
FLORIDA GEOLOGICAL SURVEY  
 2285 VICTORIA AVENUE, SUITE 170  
 FT. MYERS, FLORIDA 33901

Run No.	098
Service Order No.	29331
Fluid Level	211
<b>EQUIPMENT DATA</b>	
Sonic Panel No.	358
Sonic Cart No.	
Mem. Panel No.	340
G.R. Cart No.	127
G.R. Panel No.	340
Caliper No.	1127
TTR No.	
Centralizers:	7.2
Standoffs:	
Time Const.-Sec.	70
Speed - F.P.M.	70
<b>CALIBRATION DATA</b>	
GR	60
	940
	440

SCALE CHANGES			
Type Log	Depth	Scale Up Hole	Scale Down Hole
LOGGING DATA			
Porosity Selectors		Depth	
Δt	Δt <sub>ff</sub>	β	From To
REMARKS			
Velocity (ft/sec) =		Interval Transit Time (microseconds per foot)	
1300		13.2	

**INTERVAL TRANSIT TIME** MICROSECONDS PER FOOT **13.2**

**GAMMA RAY** API UNITS **150**



COMPANY Total Leased Inc  
 35-1 P 851  
 WELL 7A Farms Development 1435  
 FIELD Wildcat 071-38L-6462  
 COUNTY Lee STATE Florida  
 LOCATION 26 25 56 / 81 40 57  
 TOWNSHIP 10 S 27 T 38 N RANGE 26 E  
 SECTION 35 CORNER 5-162884  
 PERMANENT DATUM Ground Level Elev. ELEV. KA 37.7  
 LOG MEASURED FROM KB 16.5 ft. Above Perm Datum DEPT. 35.7  
 DRILLING MEASURED FROM KB DATE 11-11-76

Date 11-11-76  
 Depth 1325  
 Depth-Driller 1310  
 Depth-Logger (S&L) 1310  
 Firm Log Interval 1300  
 Top Log Interval 1250  
 Casing-Driller 156  
 Casing-Logger 156  
 Bit Size 6 1/2  
 Type Fluid in Hole Oil  
 Density 1.19  
 Spm. of Mud Loss 29 ml  
 Rm. @ Meas. Temp. 17.6 @ 110 ft  
 Rm. @ Meas. Temp. 17.6 @ 110 ft  
 Source Rm. Rec. —  
 Km @ BHT 13.5 @ 9.5 ft  
 Circulation Stopped 1400  
 Logger on Bottom 1400  
 Meters Rec. Temp. 14.0  
 Recorder by ZAKI ZEIN

The well name, location and borehole reference data were furnished by the customer.

No. of Scale Changes	SCALE CHANGES		
	Type Log	Depth	Scale Up Hole
0			
1			
2			
3			
4			
5			
6			
7			
8			
9			
10			
11			
12			
13			
14			
15			
16			
17			
18			
19			
20			
21			
22			
23			
24			
25			
26			
27			
28			
29			
30			
31			
32			
33			
34			
35			
36			
37			
38			
39			
40			
41			
42			
43			
44			
45			
46			
47			
48			
49			
50			

EQUIPMENT DATA	
Tool Joint	340
Motor	43
Panel	340
Panel	142
Panel	340
Panel	127

VIBRATION DATA	
Sonde Error	
Background	
Source	
- Cal.	

LOGGING DATA	
Sonde Error	
Scale per 100 Div.	
- T.C. - Log	

All interpretations are opinions based on inferences from electrical or other measurements and we cannot, and do not guarantee the accuracy or correctness of any interpretations, and we shall not, except in the case of gross or willful negligence on our part, be liable or responsible for any loss, costs, damages or expenses incurred or sustained by anyone resulting from any interpretation made by any of our officers, agents or employees. These interpretations are also subject to Clause 4 of our General Terms and Conditions as set out in our current Price Schedule.

