

22 02 82 18 3143 K

071-39



COMPANY NRM-PETROLEUM CORP
WELL ALCO 17-4 L-6463
FIELD WILDCAT 071-39
COUNTY LEE STATE FLORIDA

LOCATION 26 39 07/143TH SW SUDBINE SW
 TWP 18S R 10E S 17E
 SEC 17, T18S R10E S17E

DATE 1/25/82
TIME 2:04

LOGGING GEI
OPERATOR MA
LOGGING MA
LOGGING MA
LOGGING MA

The well name, location and borehole reference data were furnished by the customer.

| | | | |
|--------------|--------|---------------|------------|
| to | | SCALE CHANGES | |
| Order No. | 212409 | Type Log | DEPTH |
| Level | 141 | Scale Up Hole | Scale Down |
| F.P.M. | 30 | | |
| ppm. cl | | | |
| IPMENT DATA | 114.5 | | |
| dge | 1123 | | |
| erizer Panel | 504 | | |
| alizer Type | 141 | | |
| iff - Inches | 1 1/2" | | |
| anel | 1.23 | | |

REMARKS
 RAN IN COMBO
 WITH PDC-CML-GR

BRATION DATA

onde Error
 onde Error
 at In Hole - Depth
 orr. - Hole Size
 ackground
 ource
 Cal.

GING DATA

nde Error Log
 onde Error Log
 scale per 100 Div.
 T.C. Log

SPONTANEOUS-POTENTIAL

MILLIVOLTS

-20

RESISTIVITY OHMS M²M

SPHERICALLY FOCUSED LOG (SFLU)

0.2 1.0 10 100 1000 2000

MEDIUM INDUCTION (ILM)

0.2 1.0 10 100 1000 2000

DEEP INDUCTION (ILD)

0.2 1.0 10 100 1000 2000

JIG BEFORE AFTER
 2.204 2.202

NRAT
 POROSITY CHANGE (LIME): 0.000

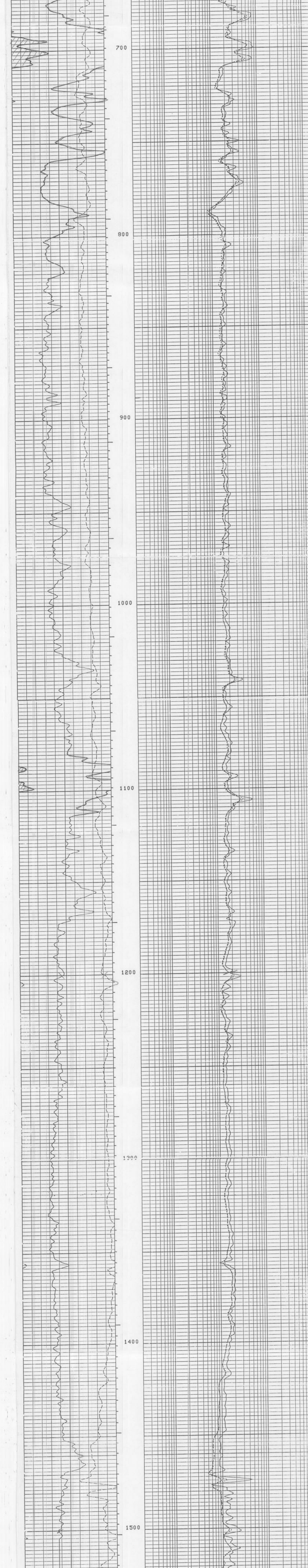
TOOL CHECK

FFDC 320
 NFDC 515

FILE 9

GR (GAPI) 100.0
 SP (MV) 40.00

ILD (OHMM) 2000
 ILM (OHMM) 2000
 SFLU(OHMM) 2000



FILE 7

GR (GAPI) 100.0
 SP (MV) 40.00

ILD (OHMM) 2000
 ILM (OHMM) 2000
 SFLU(OHMM) 2000



Denver, CO (USA)

RIS-View Version 2.5 SR3

Copyright © 1992-99 Digital Formation, Inc. All Rights Reserved.

File Name: D:\...pdf\11473.npd

Well Name: L-1473

Date: Wednesday, November 08, 2000, at 05:58:44 AM

Plot: Plot created from: 11473.npd

This software is protected by United States and International Copyright laws. It may not be duplicated, modified, reverse engineered. Digital Formation, Inc. cannot and does not assume any liability for the use of the software for any purpose. All Rights Reserved.

