



# RMBAKER LLC

WELL: L8FEB1L  
LOG STAGE: PRELIMINARY

Geology and Geophysics

8600 Oldbridge Lane  
Orlando, FL 32819  
mobile ph 407-733-8958  
fax 407-370-4129

LOGS PROVIDED:  
CALIPER  
NATURAL GAMMA

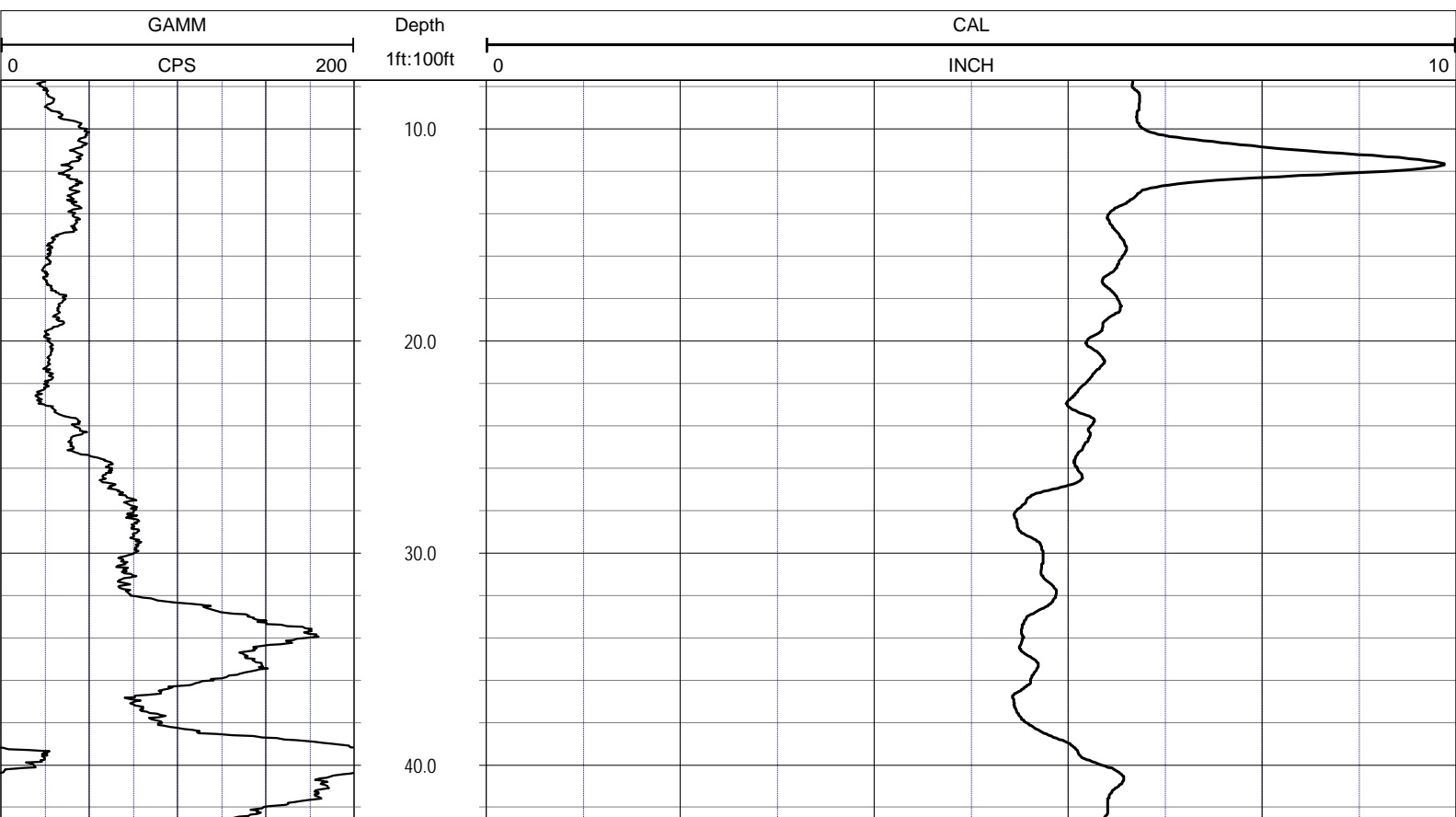
rob@rmbaker.com  
www.rmbaker.com

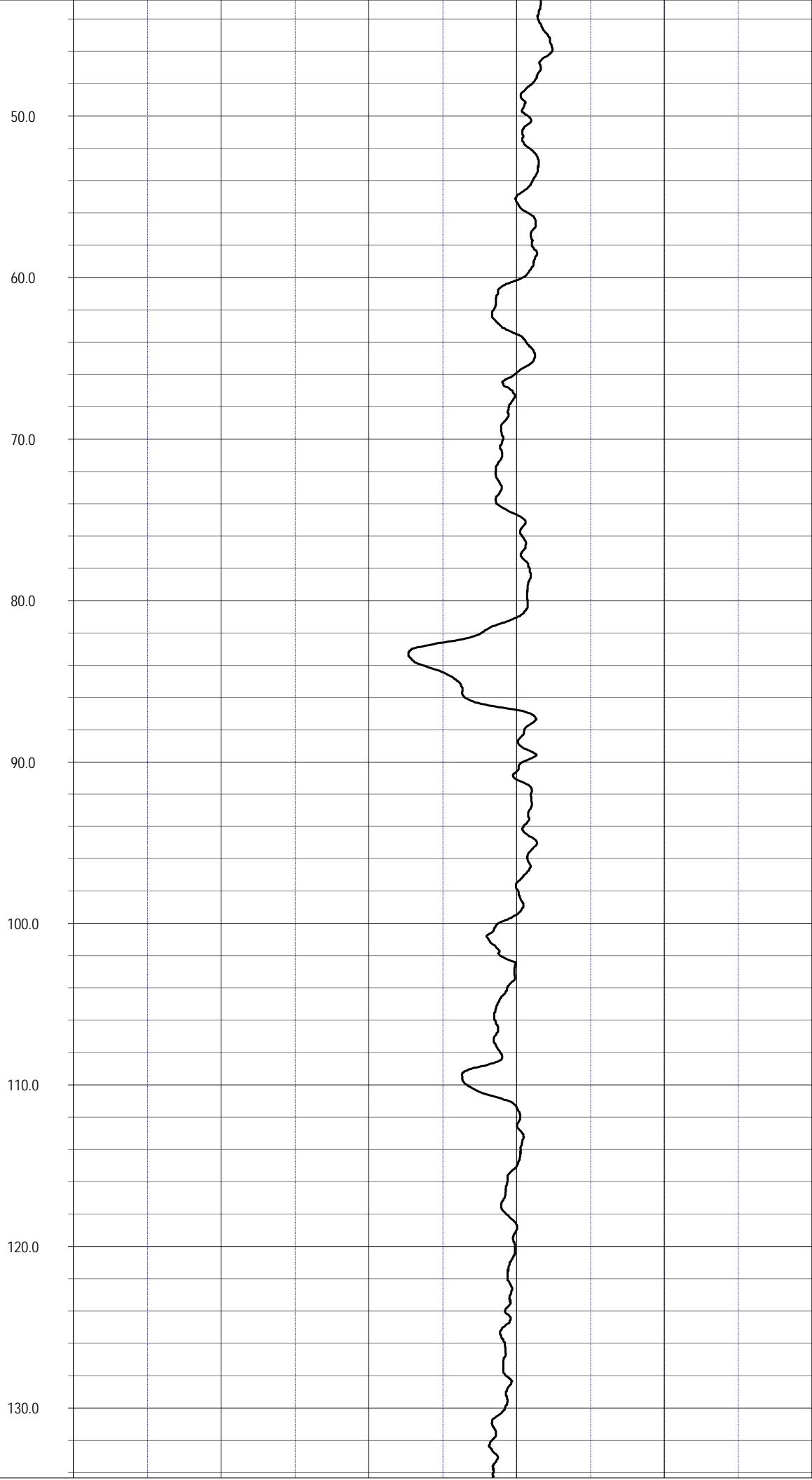
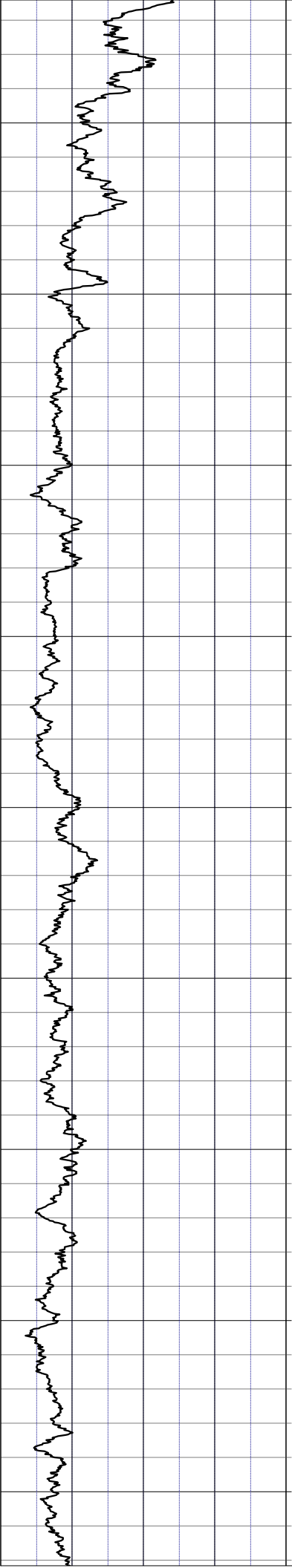
Licensed and Insured

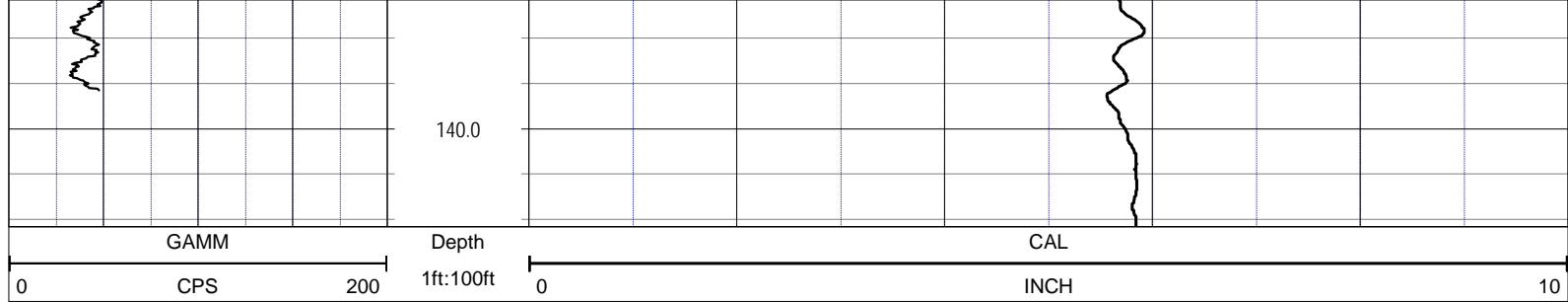
SRVC	RMBAKER LLC	COMPANY:	RMBAKER LLC
UWI	L8FEB1L	WELL NAME:	L8FEB1L
FLD	L-8 CANAL	FIELD:	L-8 CANAL
PROV	FL	COUNTRY:	USA
CTY	PALM BEACH	STATE:	FL
		COUNTY:	PALM BEACH
LOC:	N/A	ALL SERVICES:	CALIPER NATURAL GAMMA DUAL INDUCTION ELECTRIC SONIC
NOTES:			
SEC		TWP	
		RGE	
PERMANENT DATUM:		ELEVATION:	

LOG MEAS. FROM: GROUND SURFACE  
 DRILLING MEAS. FROM:  
 DATE: 17 May 14  
 TYPE FLUID IN HOLE: MUD  
 RUN No: 1  
 SALINITY:  
 TYPE LOG: CALIPER  
 DENSITY:  
 DEPTH-DRILLER: 144  
 LEVEL:  
 DEPTH-LOGGER: 145.5  
 MAX. REC. TEMP.:  
 BTM LOGGED INTERVAL: 25  
 LOGGING SPEED (FT/MIN):  
 TOP LOGGED INTERVAL:  
 TROLLING DIRECTION: UP  
 DRILLER: CENTERLINE  
 PUMPING RATE (GPM):  
 RECORDED BY: RMBAKER LLC  
 WITNESSED BY: J.JANZEN

DATE	TYPE FLUID IN HOLE	MUD	COORDINATES:
17 May 14			-80D21M50.98S 26D44M19.88S
TYPE LOG	DENSITY		
CALIPER			
DEPTH-DRILLER	LEVEL		
144			
DEPTH-LOGGER	MAX. REC. TEMP.		
145.5			
BTM LOGGED INTERVAL	LOGGING SPEED (FT/MIN)		
25			
TOP LOGGED INTERVAL	TROLLING DIRECTION		
UP			
DRILLER	PUMPING RATE (GPM)		
CENTERLINE			
RECORDED BY			
RMBAKER LLC			
WITNESSED BY			
J.JANZEN			







**NOTES:**

While due care has been exercised in the performance of these measurements and observations, in accordance with methodologies utilized by the general practitioner, RIMBAKER LLC can make no representations, warranties, or guarantees with respect to latent or concealed conditions that may exist, which may be beyond the detection capabilities of the methodologies used, or that may extend beyond the areas and depths surveyed.  
 The geophysical well logs show subsurface conditions as they existed at the dates and locations shown, and it is not warranted that they are representative of subsurface conditions at other locations and times.  
 If, at any time, different subsurface conditions from those observed are determined to be present, we must be advised and allowed to review and revise our observations if necessary.

Certificate of Authorization GB 458

**END OF LOG**



# RMBAKER LLC

WELL: L8FEB1L  
LOG STAGE: PRELIMINARY

Geology and Geophysics

8600 Oldbridge Lane  
Orlando, FL 32819  
mobile ph 407-733-8958  
fax 407-370-4129

**LOGS PROVIDED:**  
NORMAL RESISTIVITIES  
INDUCTION RESISTIVITIES  
SPONTANEOUS POTENTIAL  
SINGLE POINT RESISTIVITY  
NATURAL GAMMA

rob@rmbaker.com  
www.rmbaker.com

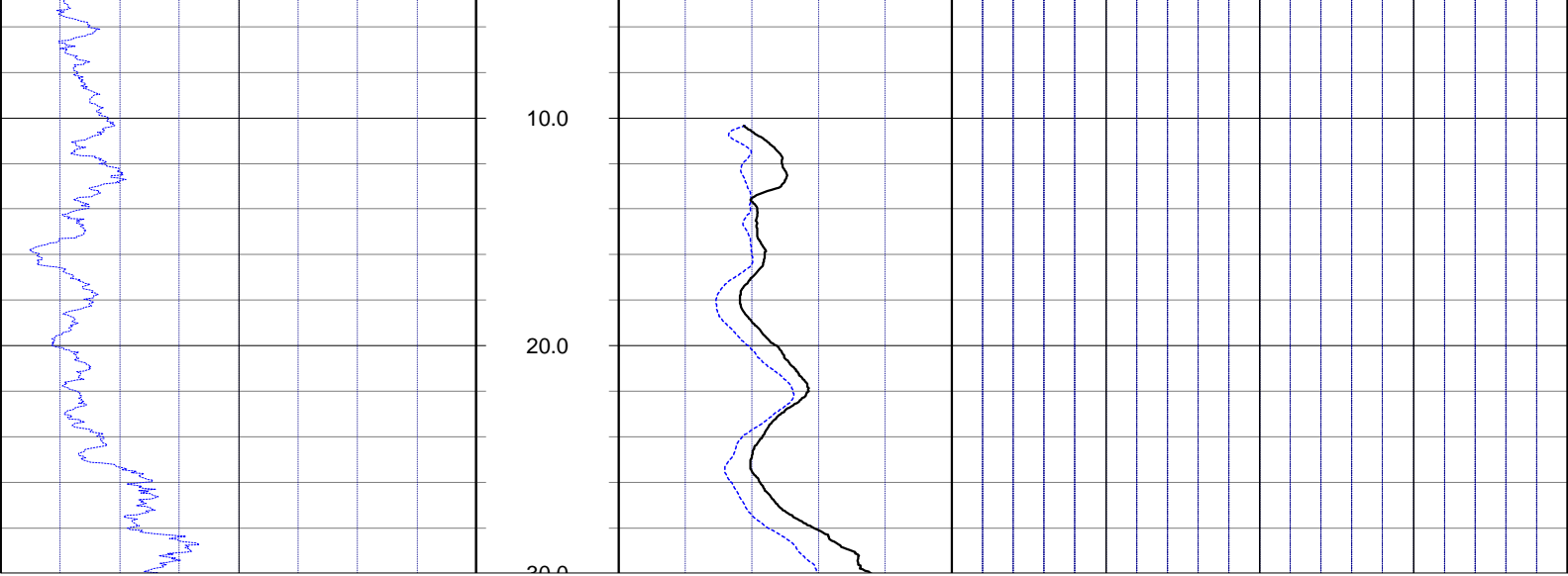
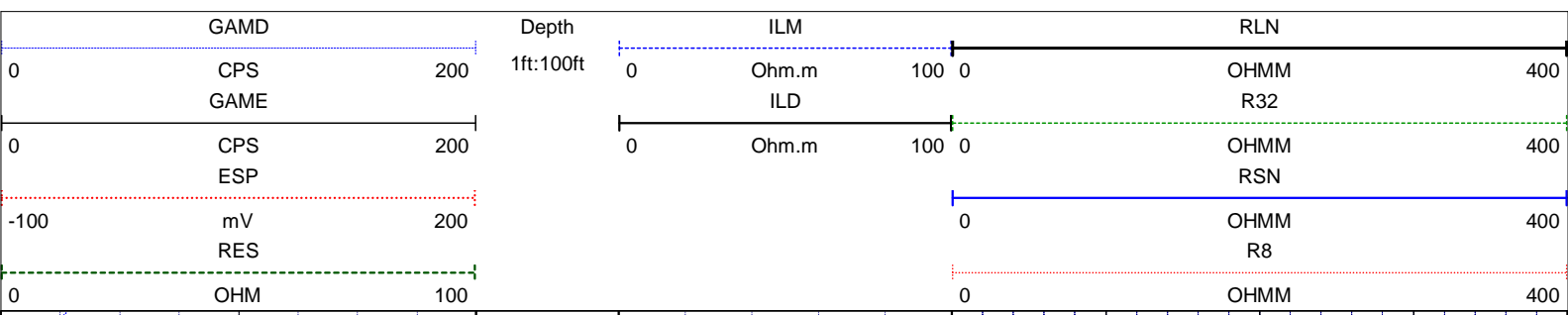
Licensed and Insured

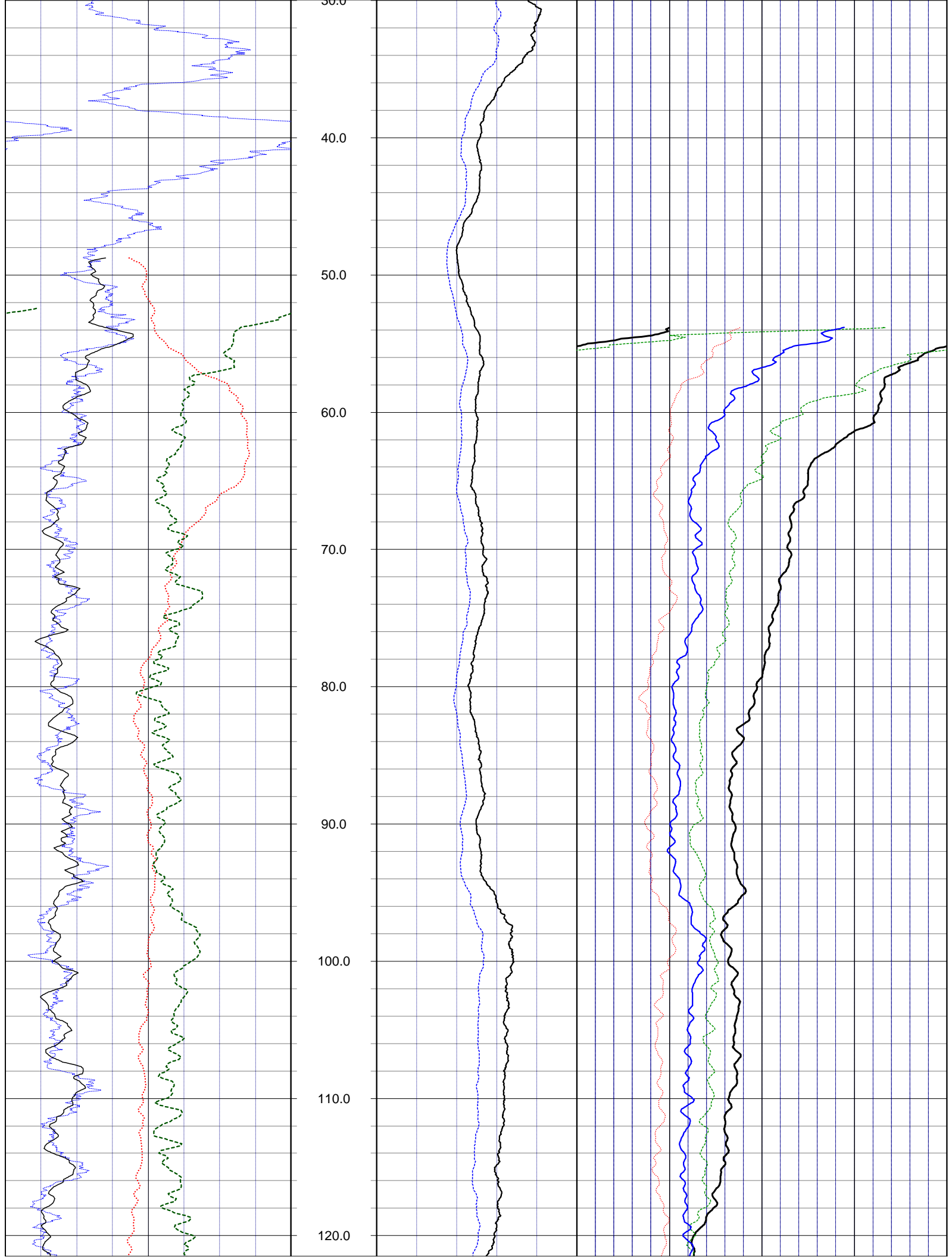
SRVC	RMBAKER LLC	COMPANY:	RMBAKER LLC
UWI	L8FEB1L	WELL NAME:	L8FEB1L
FLD	L-8 CANAL	FIELD:	L-8 CANAL
PROV	FL	COUNTRY:	USA
CTY	PALM BEACH	STATE:	FL
		COUNTY:	PALM BEACH
LOC:	N/A	ALL SERVICES:	CALIPER NATURAL GAMMA DUAL INDUCTION ELECTRIC SONIC
NOTES:			
SEC		TWP	
RGE		ELEVATION:	
		COORDINATES:	-80D21M50.98S 26D44M19.88S

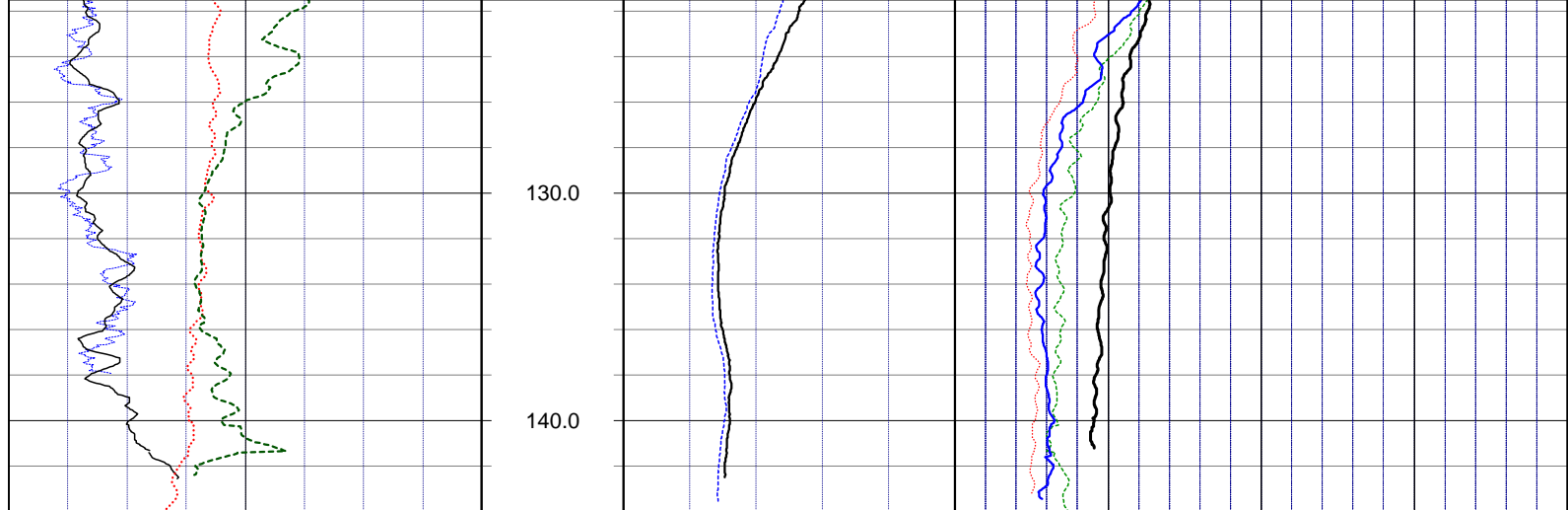
PERMANENT DATUM:  
LOG MEAS. FROM: GROUND SURFACE  
DRILLING MEAS. FROM:

DATE	17 May 14	TYPE FLUID IN HOLE	MUD
RUN No	1	SALINITY	
TYPE LOG	DUAL IND+ELECTRIC	DENSITY	
DEPTH-DRILLER	144	LEVEL	
DEPTH-LOGGER	145.5	MAX. REC. TEMP.	
BTM LOGGED INTERVAL		LOGGING SPEED (FT/MIN)	25
TOP LOGGED INTERVAL		TROLLING DIRECTION	UP
DRILLER	CENTERLINE	PUMPING RATE (GPM)	
RECORDED BY	RMBAKER LLC		
WITNESSED BY	J.JANZEN		

BOREHOLE RECORD				CASING RECORD			
RUN NO.	BIT	FROM	TO	SIZE	MAT.	FROM	TO
1	5.875	0	145				







RES			R8		
0	OHM	100	0	OHMM	400
	ESP			RSN	
-100	mV	200	0	OHMM	400
	GAME			R32	
0	CPS	200	0	OHMM	400
	GAMD			RLN	
0	CPS	200	0	OHMM	400

**NOTES:**

While due care has been exercised in the performance of these measurements and observations, in accordance with methodologies utilized by the general practitioner, RIMBAKER LLC can make no representations, warranties, or guarantees with respect to latent or concealed conditions that may exist, which may be beyond the detection capabilities of the methodologies used, or that may extend beyond the areas and depths surveyed. The geophysical well logs show subsurface conditions as they existed at the dates and locations shown, and it is not warranted that they are representative of subsurface conditions at other locations and times. If, at any time, different subsurface conditions from those observed are determined to be present, we must be advised and allowed to review and revise our observations if necessary.

Certificate of Authorization GB 458

END OF LOG



# RMBAKER LLC

WELL: L8FEB1L  
LOG STAGE: FINAL

Geology and Geophysics

8600 Oldbridge Lane  
Orlando, FL 32819  
mobile ph 407-733-8958  
fax 407-370-4129

**LOGS PROVIDED:**  
INDUCTION RESISTIVITIES  
NATURAL GAMMA

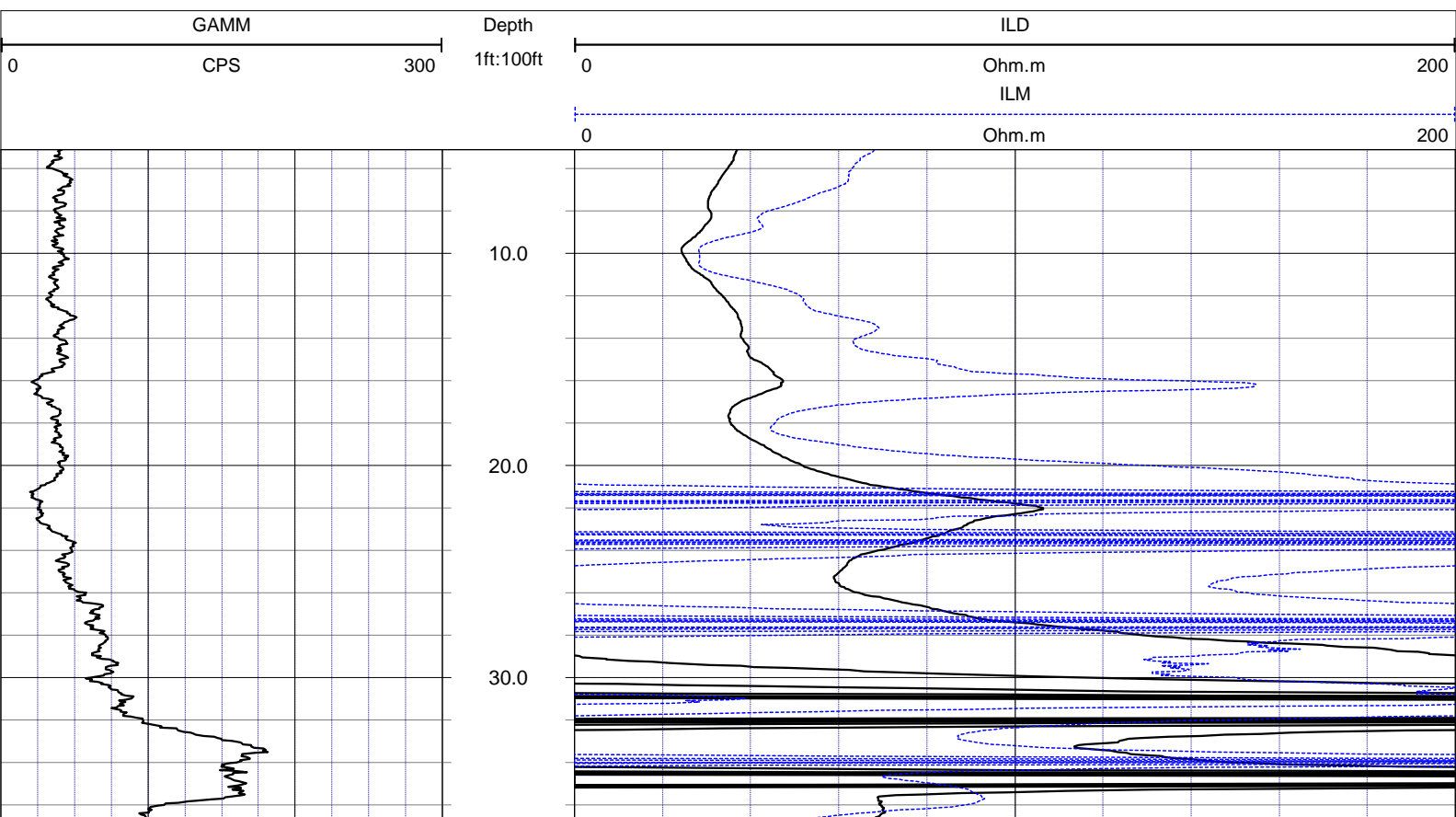
rob@rmbaker.com  
www.rmbaker.com

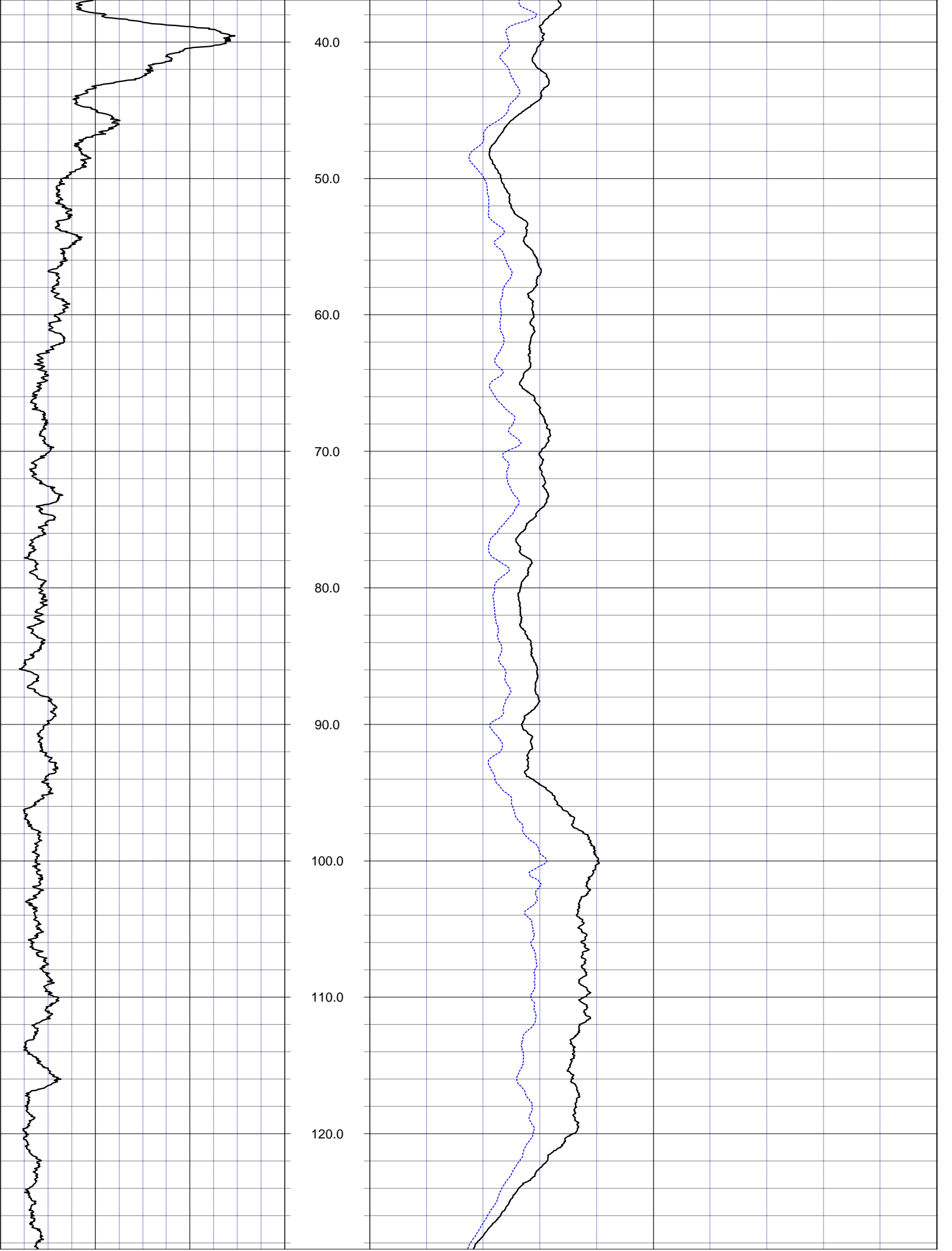
Licensed and Insured

SRVC	RMBAKER LLC	COMPANY:	RMBAKER LLC
UWI	L8FEB1L	WELL NAME:	L8FEB1L
FLD	L-8 CANAL	FIELD:	L-8 CANAL
PROV	FL	COUNTRY:	USA
CTY	PALM BEACH	STATE:	FL
		COUNTY:	PALM BEACH
PERMANENT DATUM:		LOC:	N/A
		NOTES:	ALL SERVICES: DUAL INDUCTION NATURAL GAMMA
LOG MEAS. FROM: GROUND SURFACE		ELEVATION:	
DRILLING MEAS. FROM:		COORDINATES:	-80D21M50.98S 26D44M19.88S

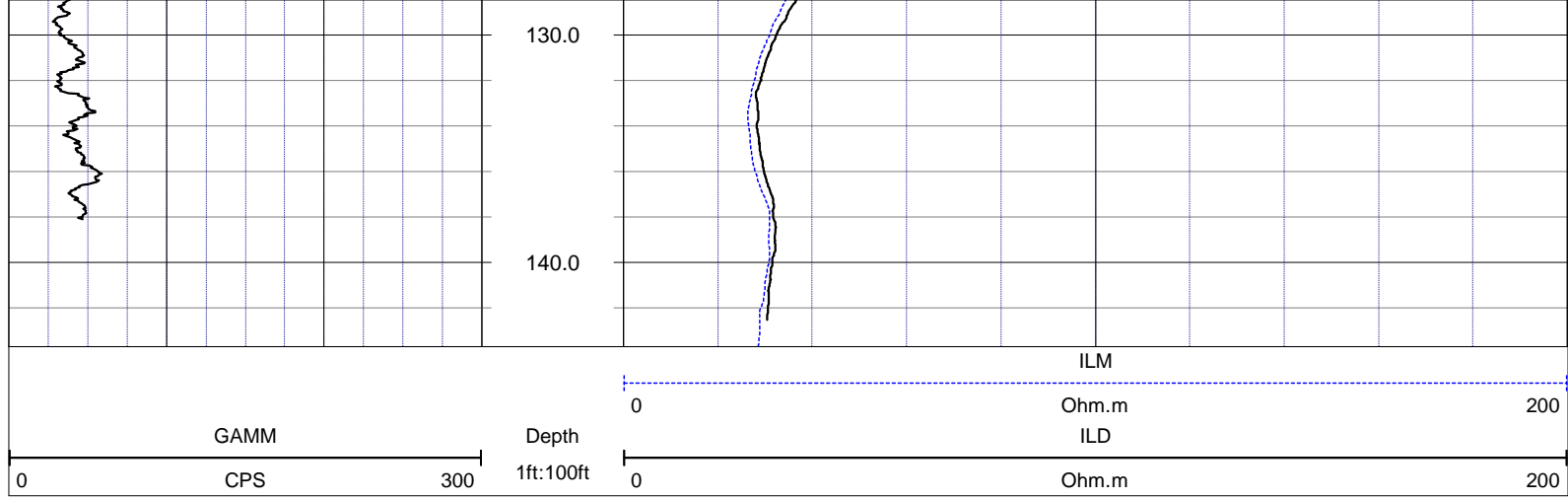
DATE	5 Jun 14	TYPE FLUID IN HOLE	WATER
RUN No	1	SALINITY	
TYPE LOG	DUAL INDUCTION	DENSITY	
DEPTH-DRILLER		LEVEL	
DEPTH-LOGGER	145.85	MAX. REC. TEMP.	
BTM LOGGED INTERVAL		LOGGING SPEED (FT/MIN)	25
TOP LOGGED INTERVAL		TROLLING DIRECTION	UP
DRILLER	CENTERLINE	PUMPING RATE (GPM)	
RECORDED BY	RMBAKER LLC		
WITNESSED BY	JJANZEN		

BOREHOLE RECORD				CASING RECORD			
RUN NO.	BIT	FROM	TO	SIZE	MAT.	FROM	TO
1				2	PVC	0	145.85









**NOTES:**

While due care has been exercised in the performance of these measurements and observations, in accordance with methodologies utilized by the general practitioner, RIMBAKER LLC can make no representations, warranties, or guarantees with respect to latent or concealed conditions that may exist, which may be beyond the detection capabilities of the methodologies used, or that may extend beyond the areas and depths surveyed.

The geophysical well logs show subsurface conditions as they existed at the dates and locations shown, and it is not warranted that they are representative of subsurface conditions at other locations and times.

If, at any time, different subsurface conditions from those observed are determined to be present, we must be advised and allowed to review and revise our observations if necessary.

Certificate of Authorization GB 458

**END OF LOG**



# RMBAKER LLC

Geology and Geophysics

WELL: L8FEB1L  
LOG STAGE: PRELIMINARY

8600 Oldbridge Lane  
Orlando, FL 32819  
mobile ph 407-733-8958  
fax 407-370-4129

**LOGS PROVIDED:**  
SONIC INTERVAL VELOCITY  
VARIABLE DENSITY LOGS

rob@rmbaker.com  
www.rmbaker.com

Licensed and Insured

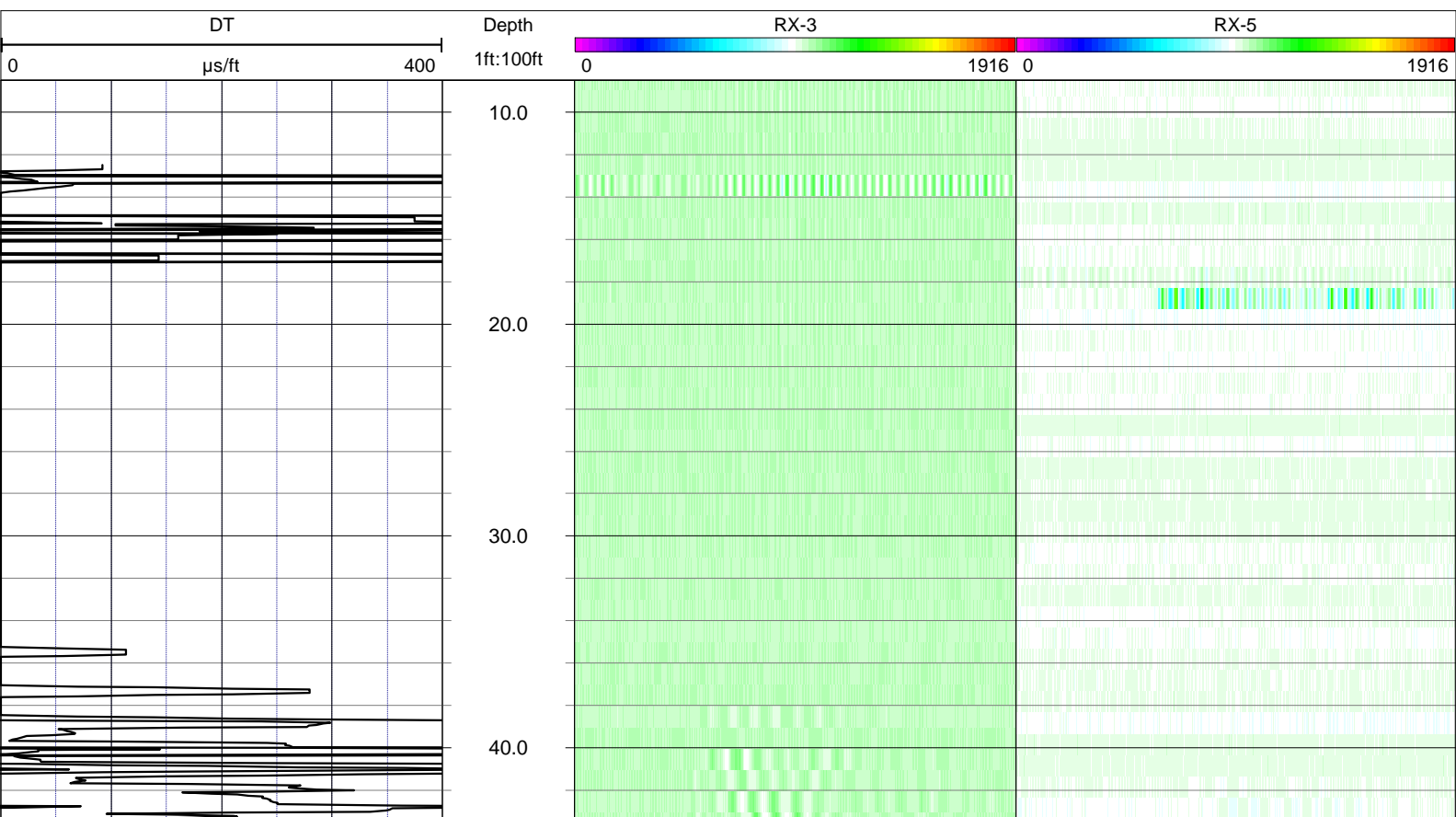
<b>SRVC</b> RMBAKER LLC	<b>COMPANY:</b> RMBAKER LLC
<b>UWI</b> L8FEB1L	<b>WELL NAME:</b> L8FEB1L
<b>FLD</b> L-8 CANAL	<b>FIELD:</b> L-8 CANAL
<b>PROV</b> FL	<b>COUNTRY:</b> USA
<b>CTY</b> PALM BEACH	<b>STATE:</b> FL
	<b>COUNTY:</b> PALM BEACH
<b>LOC:</b> N/A	<b>ALL SERVICES:</b> CALIPER, NATURAL GAMMA, DUAL INDUCTION, ELECTRIC, SONIC
<b>NOTES:</b>	
<b>SEC</b>	<b>TWP</b>
<b>RGE</b>	<b>ELEVATION:</b>
	<b>COORDINATES:</b> -80D21M50.98S, 26D44M19.88S

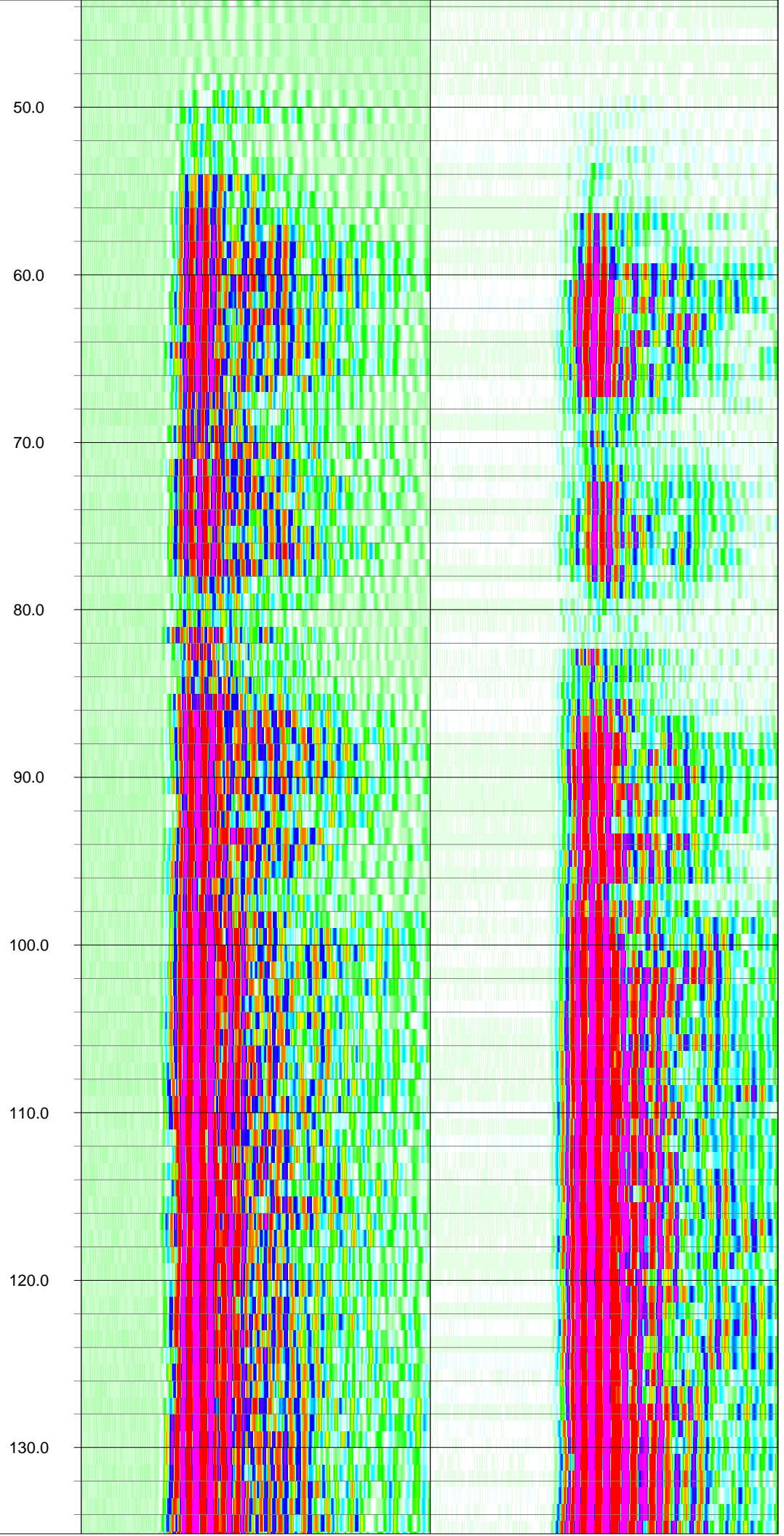
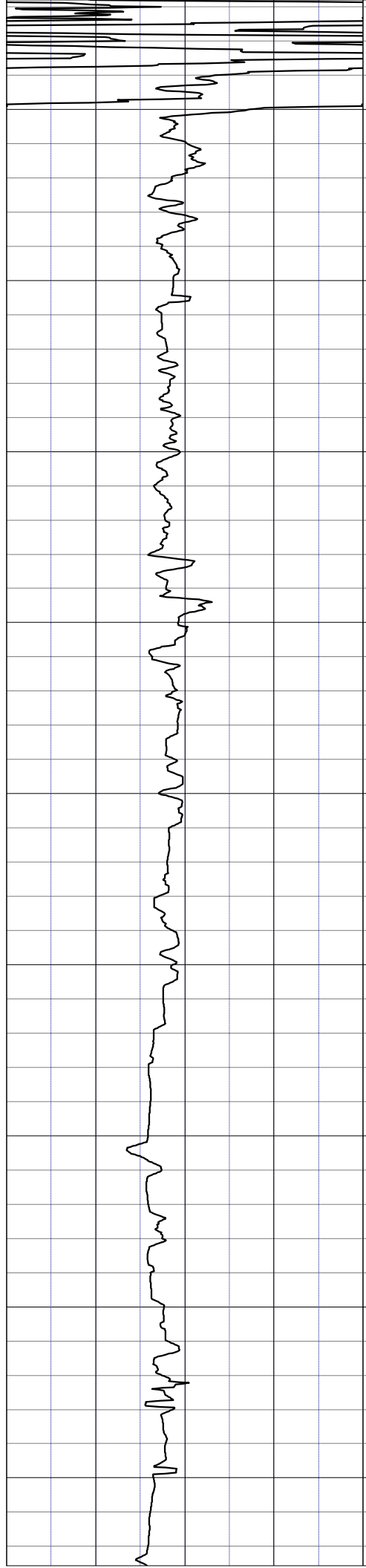
PERMANENT DATUM: LOG MEAS. FROM: GROUND SURFACE

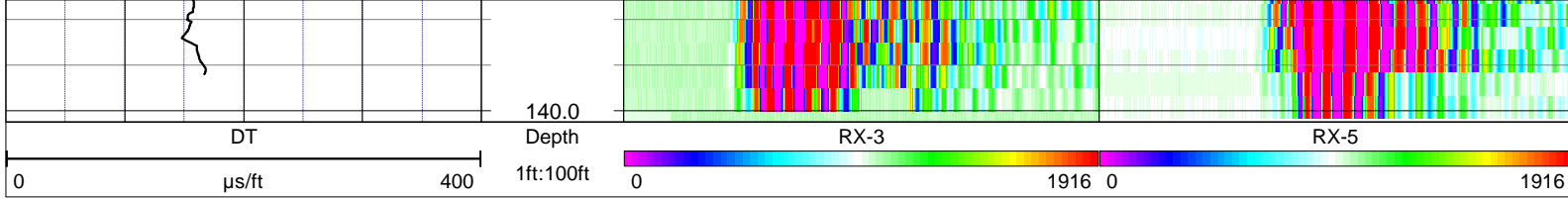
DRILLING MEAS. FROM:

DATE	17 May 14	TYPE FLUID IN HOLE	MUD
RUN No	1	SALINITY	
TYPELOG	SONIC	DENSITY	
DEPTH-DRILLER	144	LEVEL	
DEPTH-LOGGER	145.5	MAX. REC. TEMP.	
BTM LOGGED INTERVAL		LOGGING SPEED (FT/MIN)	15
TOP LOGGED INTERVAL		TROLLING DIRECTION	UP
DRILLER	CENTERLINE	PUMPING RATE (GPM)	
RECORDED BY	RMBAKER LLC		
WITNESSED BY	JJANZEN		

BOREHOLE RECORD				CASING RECORD			
RUN NO.	BIT	FROM	TO	SIZE	MAT.	FROM	TO
1	5.875	0	145				







**NOTES:**

While due care has been exercised in the performance of these measurements and observations, in accordance with methodologies utilized by the general practitioner, RMLBAKER LLC can make no representations, warranties, or guarantees with respect to latent or concealed conditions that may exist, which may be beyond the detection capabilities of the methodologies used, or that may extend beyond the areas and depths surveyed.  
 The geophysical well logs show subsurface conditions as they existed at the dates and locations shown, and it is not warranted that they are representative of subsurface conditions at other locations and times.  
 If, at any time, different subsurface conditions from those observed are determined to be present, we must be advised and allowed to review and revise our observations if necessary.

Certificate of Authorization GB 458

END OF LOG