



# RMBAKER LLC

Geology and Geophysics

WELL: L8FEB5L  
LOG STAGE: PRELIMINARY

8600 Oldbridge Lane  
Orlando, FL 32819  
mobile ph 407-733-8958  
fax 407-370-4129

LOGS PROVIDED:  
CALIPER  
NATURAL GAMMA

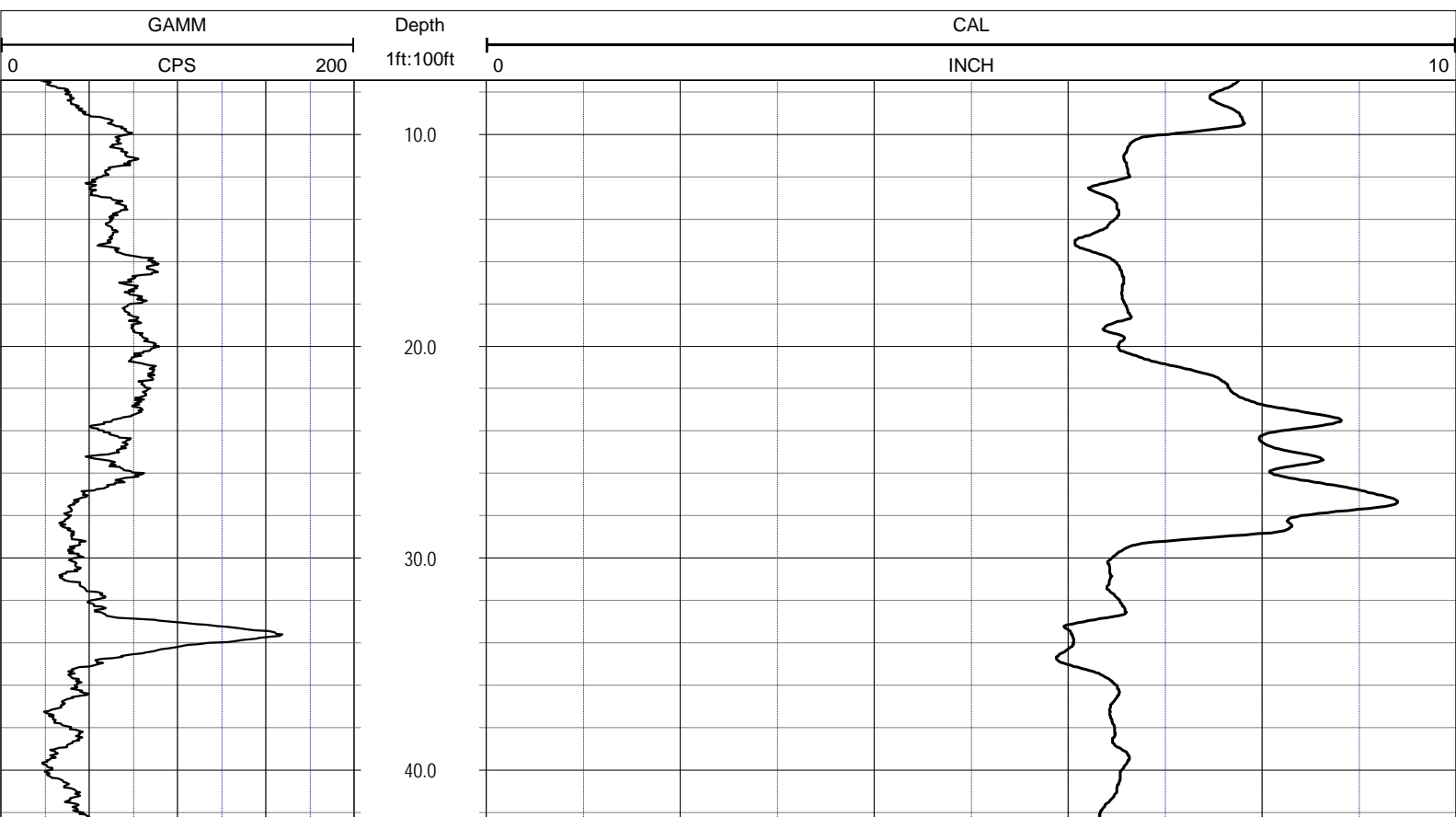
rob@rmbaker.com  
www.rmbaker.com

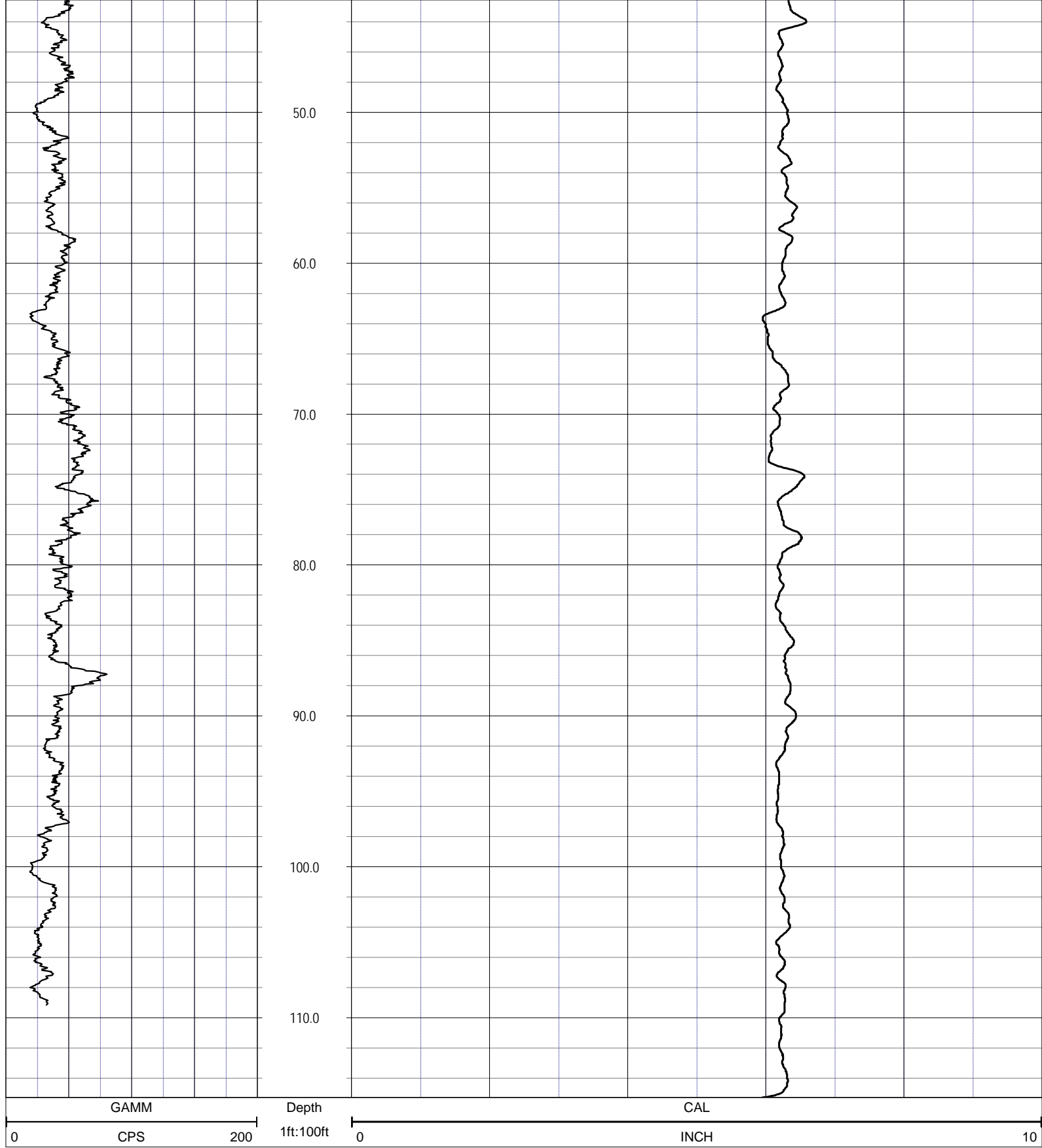
Licensed and Insured

SRVC	RMBAKER LLC	COMPANY:	RMBAKER LLC
UWI	L8FEB5L	WELL NAME:	L8FEB5L
FLD	L-8 RESERVOIR	FIELD:	L-8 RESERVOIR
PROV	FL	COUNTRY:	USA
CTY	PALM BEACH	STATE:	FL
		COUNTY:	PALM BEACH
LOC:	N/A	ALL SERVICES:	CALIPER NATURAL GAMMA DUAL INDUCTION ELECTRIC SONIC
NOTES:			
SEC		TWP	
		RGE	
PERMANENT DATUM:		ELEVATION:	
LOG MEAS. FROM:	GROUND SURFACE	COORDINATES:	-80D22M33.99S 26D44M19.88S
DRILLING MEAS. FROM:			

DATE	13 May 14	TYPE FLUID IN HOLE	MUD
RUN No	1	SALINITY	
TYPE LOG	CALIPER	DENSITY	
DEPTH-DRILLER	115	LEVEL	
DEPTH-LOGGER	115.5	MAX. REC. TEMP.	
BTM LOGGED INTERVAL		LOGGING SPEED (FT/MIN)	25
TOP LOGGED INTERVAL		TROLLING DIRECTION	UP
DRILLER	CENTERLINE	PUMPING RATE (GPM)	
RECORDED BY	RMBAKER LLC		
WITNESSED BY	B. COLLINS		

BOREHOLE RECORD				CASING RECORD			
RUN NO.	BIT	FROM	TO	SIZE	MAT.	FROM	TO
1	5.875	0	115				





**NOTES:**

While due care has been exercised in the performance of these measurements and observations, in accordance with methodologies utilized by the general practitioner, RMLBAKER LLC can make no representations, warranties, or guarantees with respect to latent or concealed conditions that may exist, which may be beyond the detection capabilities of the methodologies used, or that may extend beyond the areas and depths surveyed.

The geophysical well logs show subsurface conditions as they existed at the dates and locations shown, and it is not warranted that they are representative of subsurface conditions at other locations and times.

If, at any time, different subsurface conditions from those observed are determined to be present, we must be advised and allowed to review and revise our observations if necessary.

Certificate of Authorization GB 458

END OF LOG



# RMBAKER LLC

WELL: L8FEB5L  
LOG STAGE: PRELIMINARY

Geology and Geophysics

8600 Oldbridge Lane  
Orlando, FL 32819  
mobile ph 407-733-8958  
fax 407-370-4129

**LOGS PROVIDED:**  
NORMAL RESISTIVITIES  
INDUCTION RESISTIVITIES  
SPONTANEOUS POTENTIAL  
SINGLE POINT RESISTIVITY  
NATURAL GAMMA

rob@rmbaker.com  
www.rmbaker.com

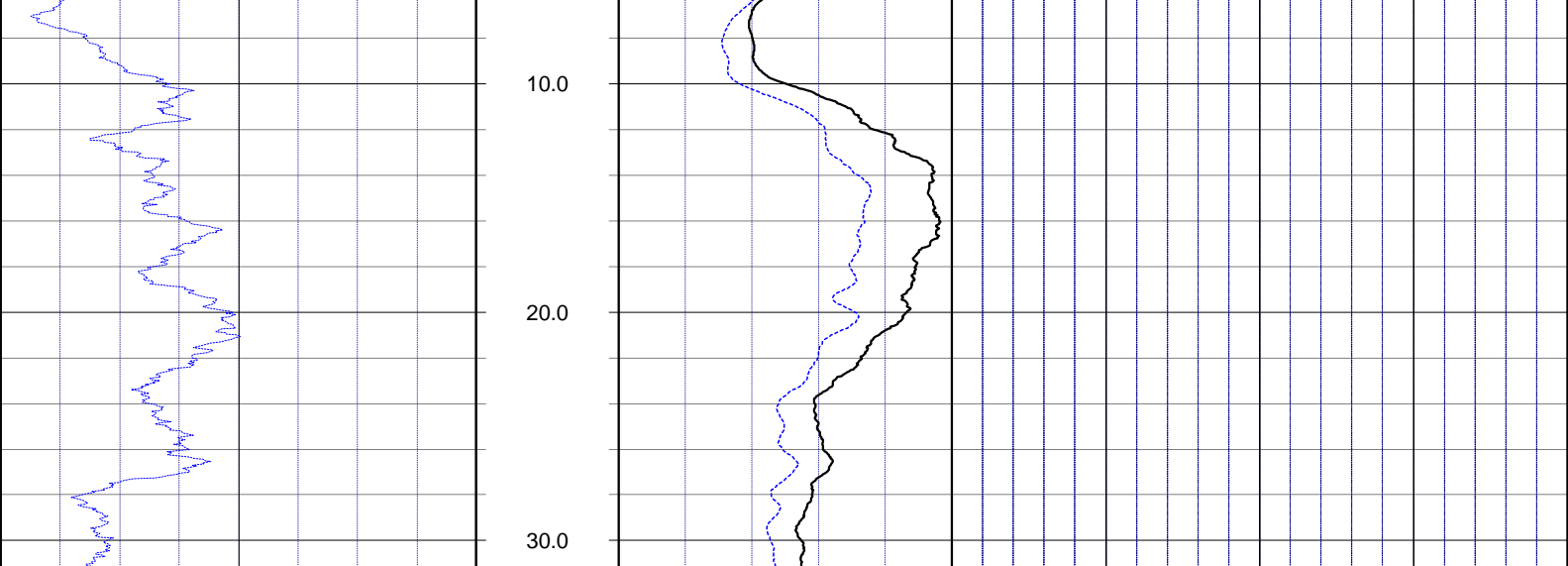
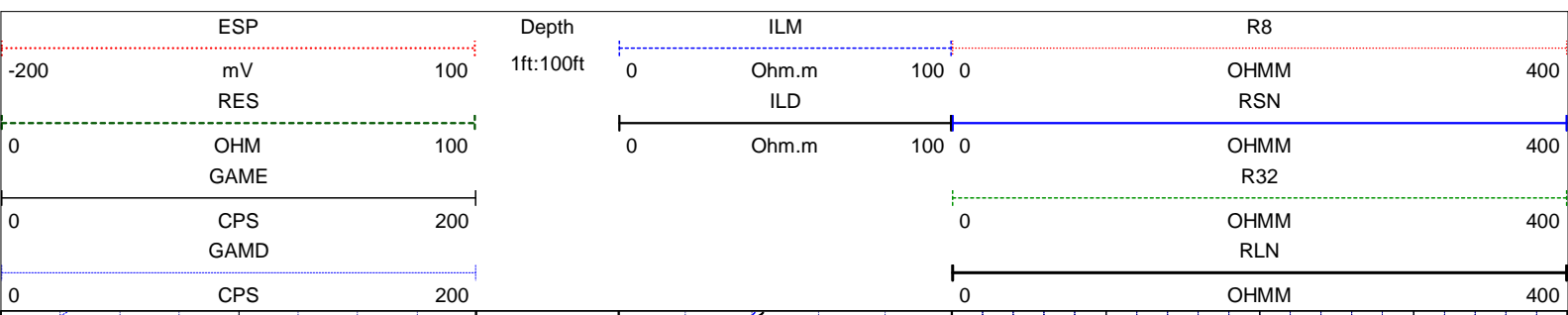
Licensed and Insured

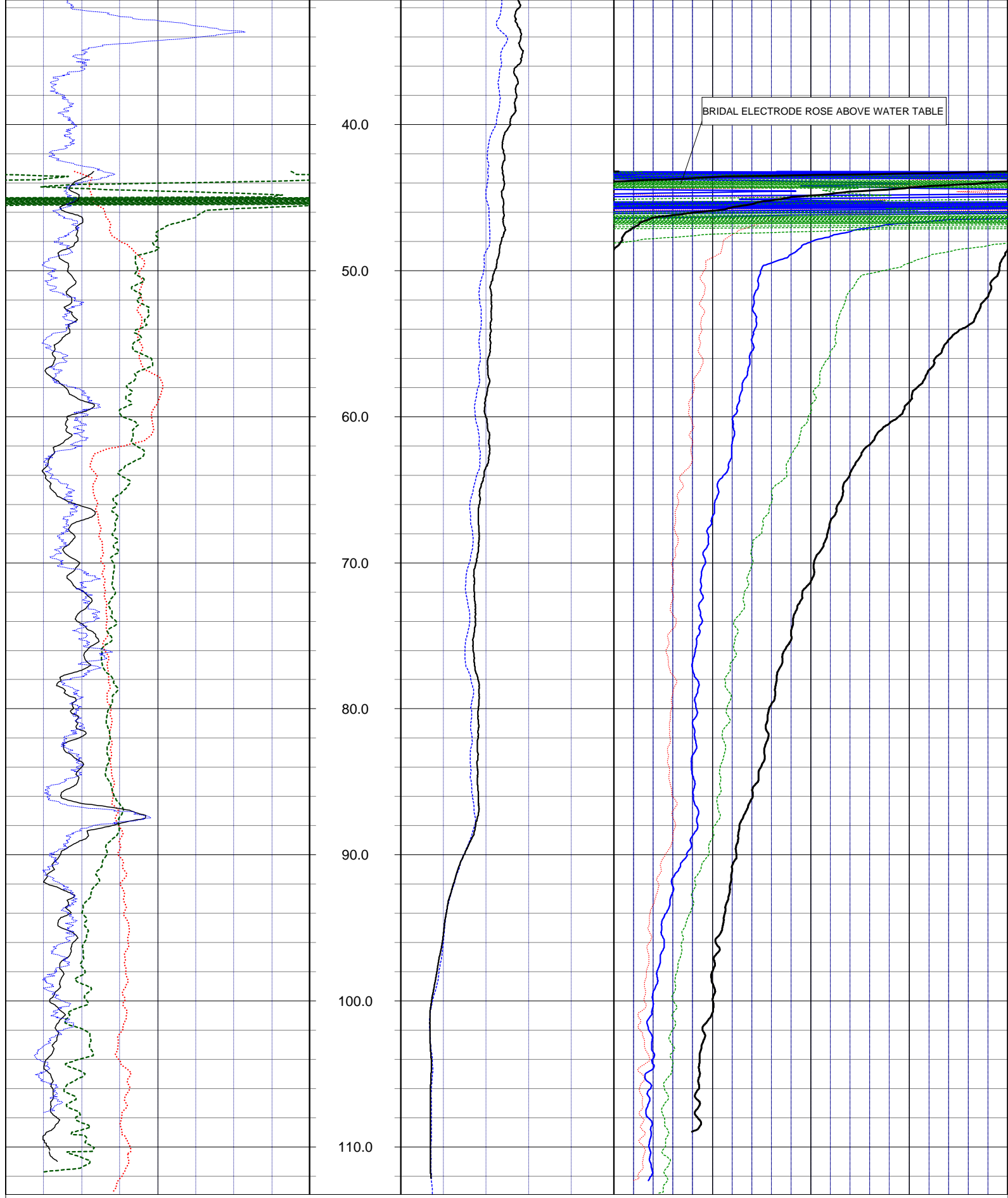
SRVC	RMBAKER LLC	COMPANY:	RMBAKER LLC
UWI	L8FEB5L	WELL NAME:	L8FEB5L
FLD	L-8 RESERVOIR	FIELD:	L-8 RESERVOIR
PROV	FL	COUNTRY:	USA
CTY	PALM BEACH	STATE:	FL
		COUNTY:	PALM BEACH
LOC:	N/A	ALL SERVICES:	CALIPER NATURAL GAMMA DUAL INDUCTION ELECTRIC SONIC
NOTES:			
SEC		TWP	
		RGE	
PERMANENT DATUM:		ELEVATION:	COORDINATES:

LOG MEAS. FROM: GROUND SURFACE  
 DRILLING MEAS. FROM:  
 DATE: 13 May 14  
 TYPE FLUID IN HOLE: MUD  
 RUN No: 1  
 SALINITY

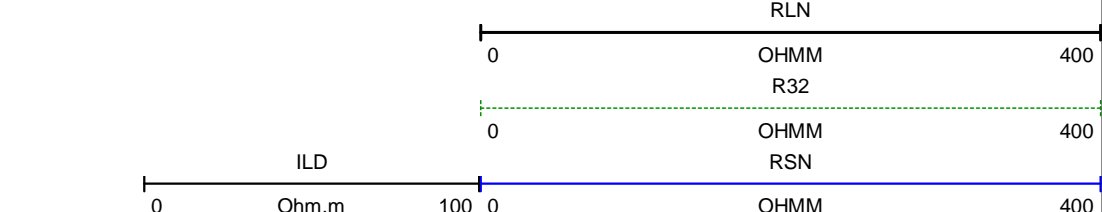
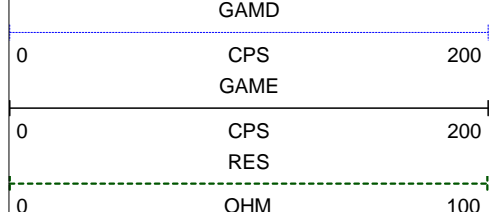
DEPTH-DRILLER	115	DUAL IND+ELECTRIC	DENSITY
DEPTH-LOGGER	115.5	LEVEL	
BTM LOGGED INTERVAL		MAX. REC. TEMP.	
TOP LOGGED INTERVAL		LOGGING SPEED (FT/MIN)	25
DRILLER	CENTERLINE	TROLLING DIRECTION	UP
RECORDED BY	RMBAKER LLC	PUMPING RATE (GPM)	
WITNESSED BY	B. COLLINS		

RUN NO.	BOREHOLE RECORD	CASING RECORD				
BIT	FROM	TO	SIZE	MAT.	FROM	TO
1	5.875	0	115			





BRIDAL ELECTRODE ROSE ABOVE WATER TABLE



ESP

Depth

ILM

R8

-200

mV

100

1ft:100ft

0

Ohm.m

100 0

OHMM

400

NOTES:

While due care has been exercised in the performance of these measurements and observations, in accordance with methodologies utilized by the general practitioner, RMBAKER LLC can make no representations, warranties, or guarantees with respect to latent or concealed conditions that may exist, which may be beyond the detection capabilities of the methodologies used, or that may extend beyond the areas and depths surveyed.

The geophysical well logs show subsurface conditions as they existed at the dates and locations shown, and it is not warranted that they are representative of subsurface conditions at other locations and times.

If, at any time, different subsurface conditions from those observed are determined to be present, we must be advised and allowed to review and revise our observations if necessary.

Certificate of Authorization GB 458

END OF LOG



# RMBAKER LLC

Geology and Geophysics

WELL: L8FEB5L  
LOG STAGE: FINAL

8600 Oldbridge Lane  
Orlando, FL 32819  
mobile ph 407-733-8958  
fax 407-370-4129

**LOGS PROVIDED:**  
INDUCTION RESISTIVITIES  
NATURAL GAMMA

rob@rmbaker.com  
www.rmbaker.com

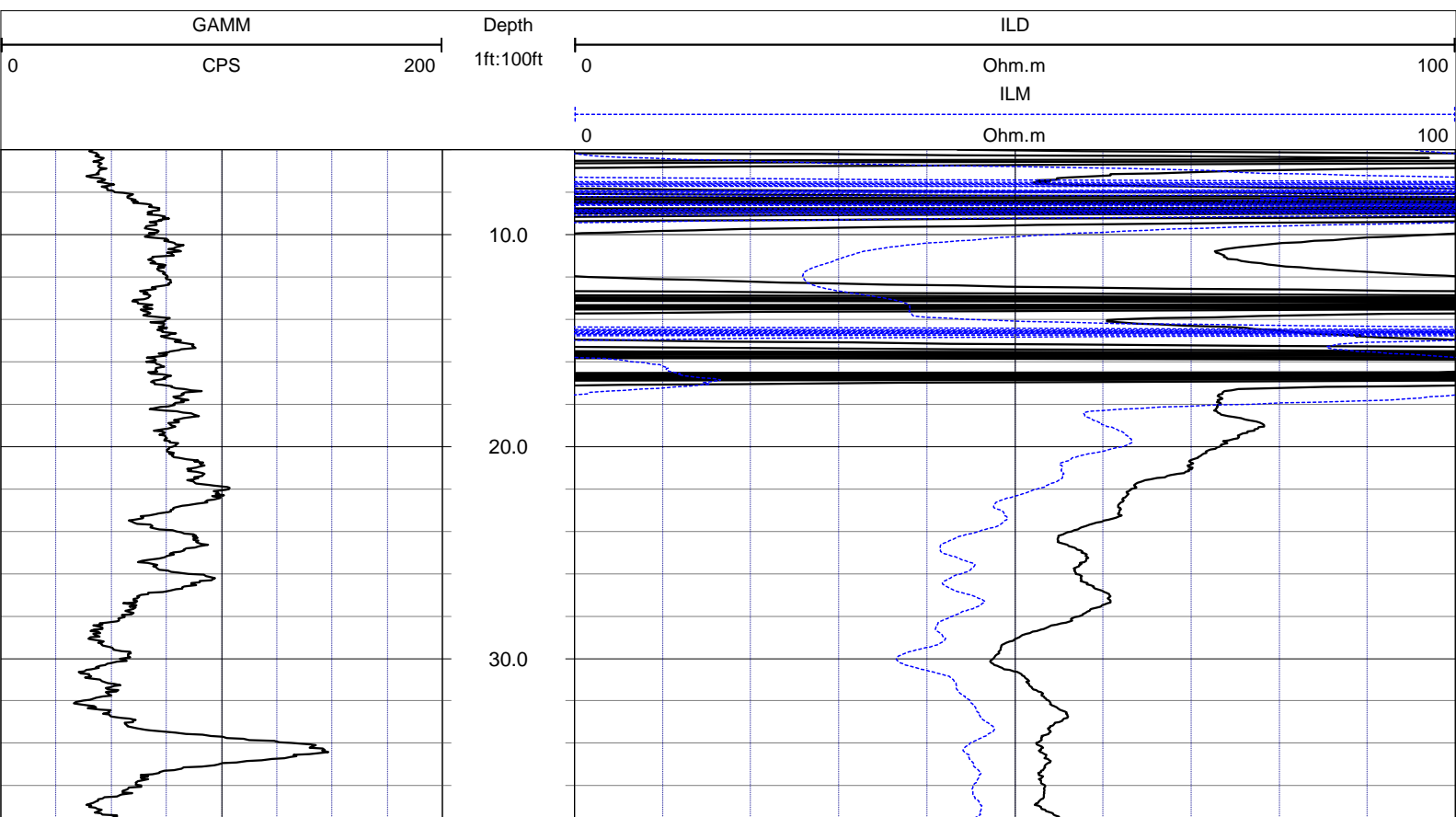
Licensed and Insured

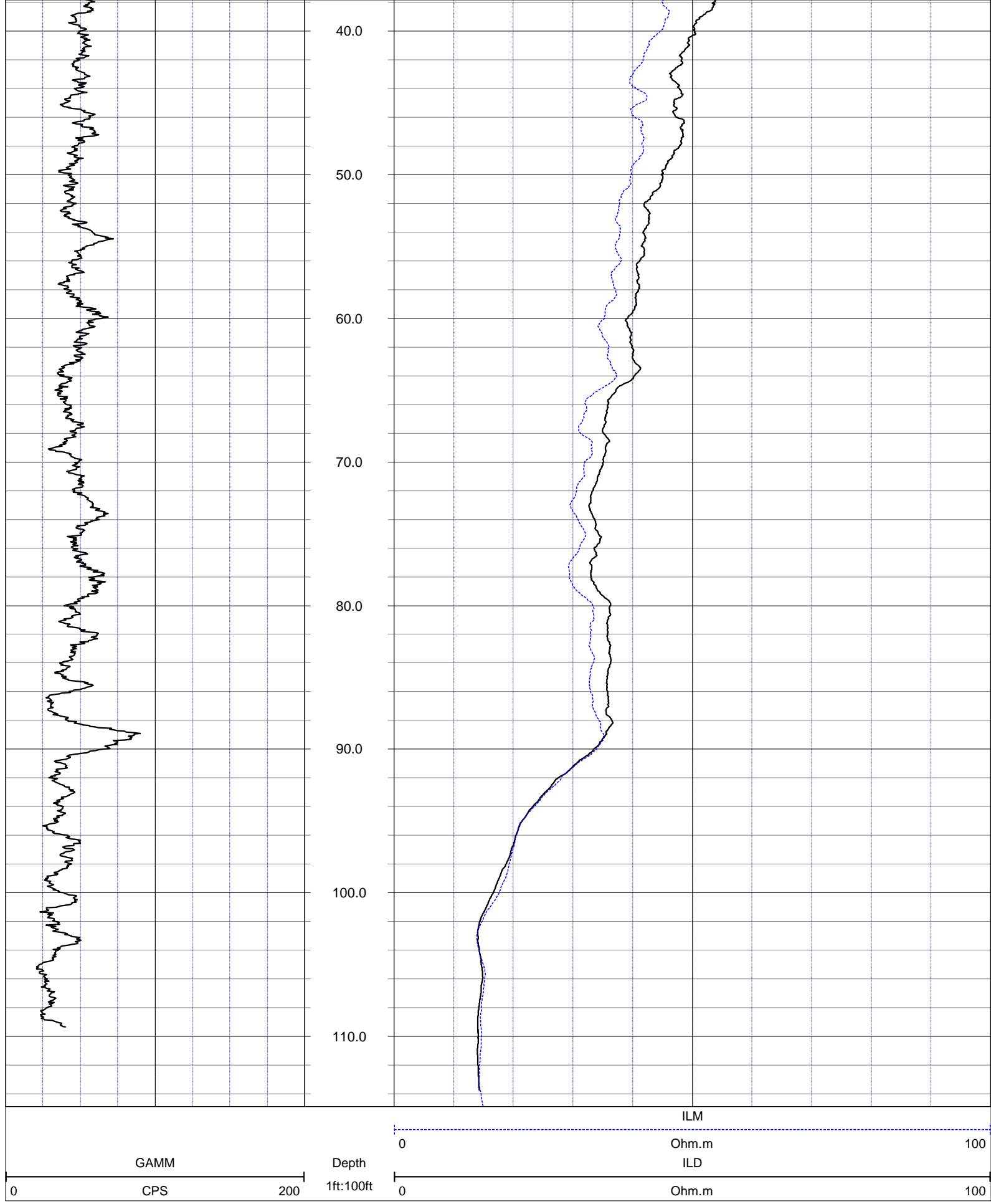
<b>SRVC</b>	<b>RMBAKER LLC</b>	<b>COMPANY:</b>	<b>RMBAKER LLC</b>
<b>UWI</b>	<b>L8FEB5L</b>	<b>WELL NAME:</b>	<b>L8FEB5L</b>
<b>FLD</b>	<b>L-8 RESERVOIR</b>	<b>FIELD:</b>	<b>L-8 RESERVOIR</b>
<b>PROV</b>	<b>FL</b>	<b>COUNTRY:</b>	<b>USA</b>
<b>CTY</b>	<b>PALM BEACH</b>	<b>STATE:</b>	<b>FL</b>
		<b>COUNTY:</b>	<b>PALM BEACH</b>
<b>LOC:</b>	N/A	<b>ALL SERVICES:</b>	DUAL INDUCTION NATURAL GAMMA
<b>NOTES:</b>			

<b>PERMANENT DATUM:</b>		<b>ELEVATION:</b>	
<b>LOG MEAS. FROM:</b>	<b>GROUND SURFACE</b>		<b>COORDINATES:</b>
			<b>-80D22M33.99S</b>
			<b>26D44M19.88S</b>

<b>DRILLING MEAS. FROM:</b>		<b>DATE</b>	5 Jun 14	<b>TYPE FLUID IN HOLE</b>	WATER
<b>RUN No</b>	1	<b>DUAL INDUCTION</b>		<b>SALINITY</b>	
<b>DEPTH-DRILLER</b>		<b>DENSITY</b>		<b>LEVEL</b>	
<b>DEPTH-LOGGER</b>	117.1	<b>MAX. REC. TEMP.</b>		<b>LOGGING SPEED (FT/MIN)</b>	25
<b>BTM LOGGED INTERVAL</b>		<b>TROLLING DIRECTION</b>		<b>PUMPING RATE (GPM)</b>	UP
<b>TOP LOGGED INTERVAL</b>		<b>CENTERLINE</b>			
<b>DRILLER</b>	RMBAKER LLC				
<b>RECORDED BY</b>	J. JANZEN				
<b>WITNESSED BY</b>					

<b>RUN NO.</b>	<b>BIT</b>	<b>FROM</b>	<b>TO</b>	<b>CASING RECORD</b>	<b>SIZE</b>	<b>MAT.</b>	<b>FROM</b>	<b>TO</b>
1					2	PVC	0	117.1





**NOTES:**

While due care has been exercised in the performance of these measurements and observations, in accordance with methodologies utilized by the general practitioner, RIMBAKER LLC can make no representations, warranties, or guarantees with respect to latent or concealed conditions that may exist, which may be beyond the detection capabilities of the methodologies used, or that may extend beyond the areas and depths surveyed.

The geophysical well logs show subsurface conditions as they existed at the dates and locations shown, and it is not warranted that they are representative of subsurface conditions at other locations and times.

If, at any time, different subsurface conditions from those observed are determined to be present, we must be advised and allowed to review and revise our observations if necessary.

END OF LOG

---





# RMBAKER LLC

WELL: L8FEB5L  
LOG STAGE: PRELIMINARY

Geology and Geophysics

8600 Oldbridge Lane  
Orlando, FL 32819  
mobile ph 407-733-8958  
fax 407-370-4129

**LOGS PROVIDED:**  
SONIC INTERVAL VELOCITY  
VARIABLE DENSITY LOGS

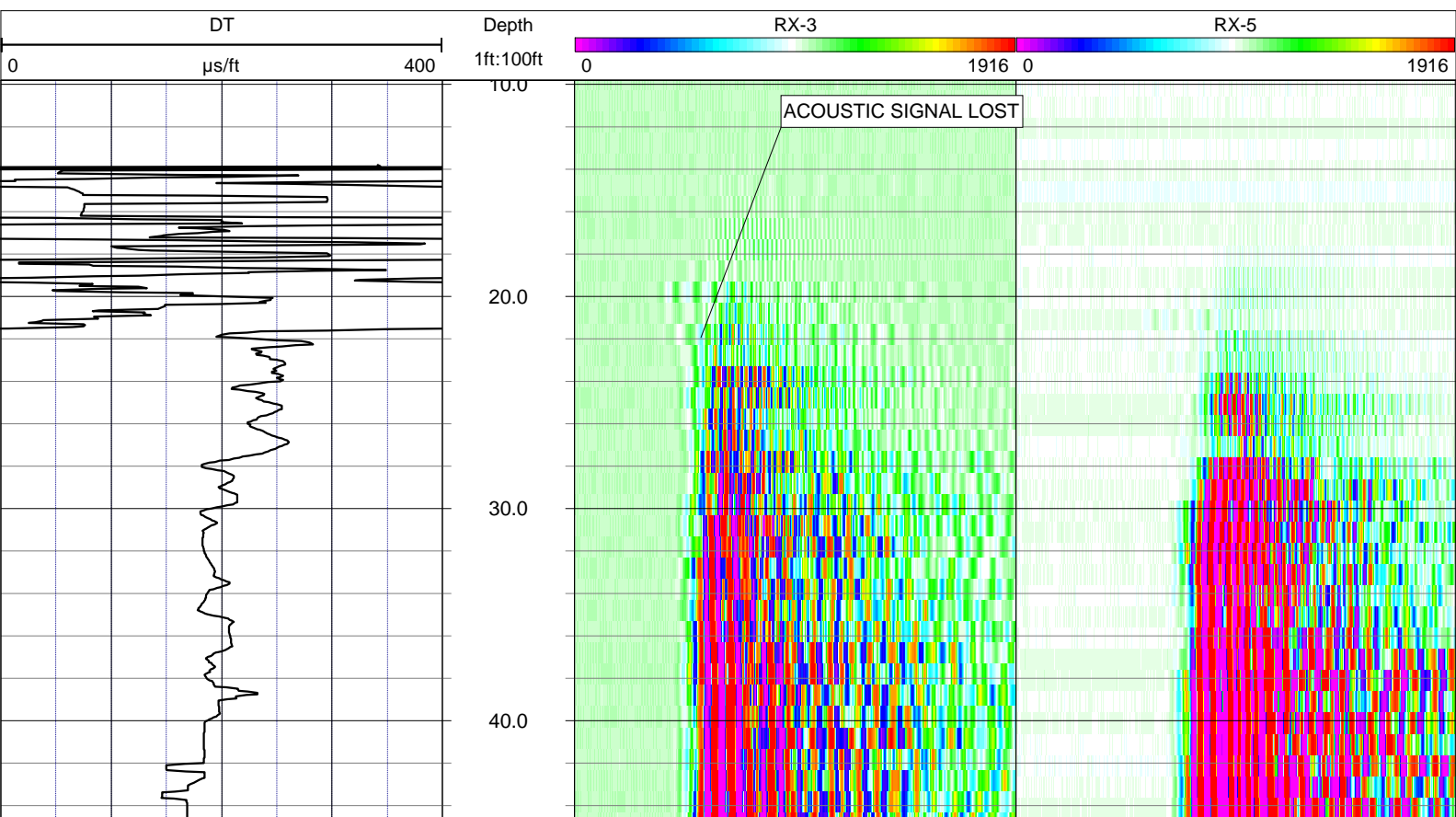
rob@rmbaker.com  
www.rmbaker.com

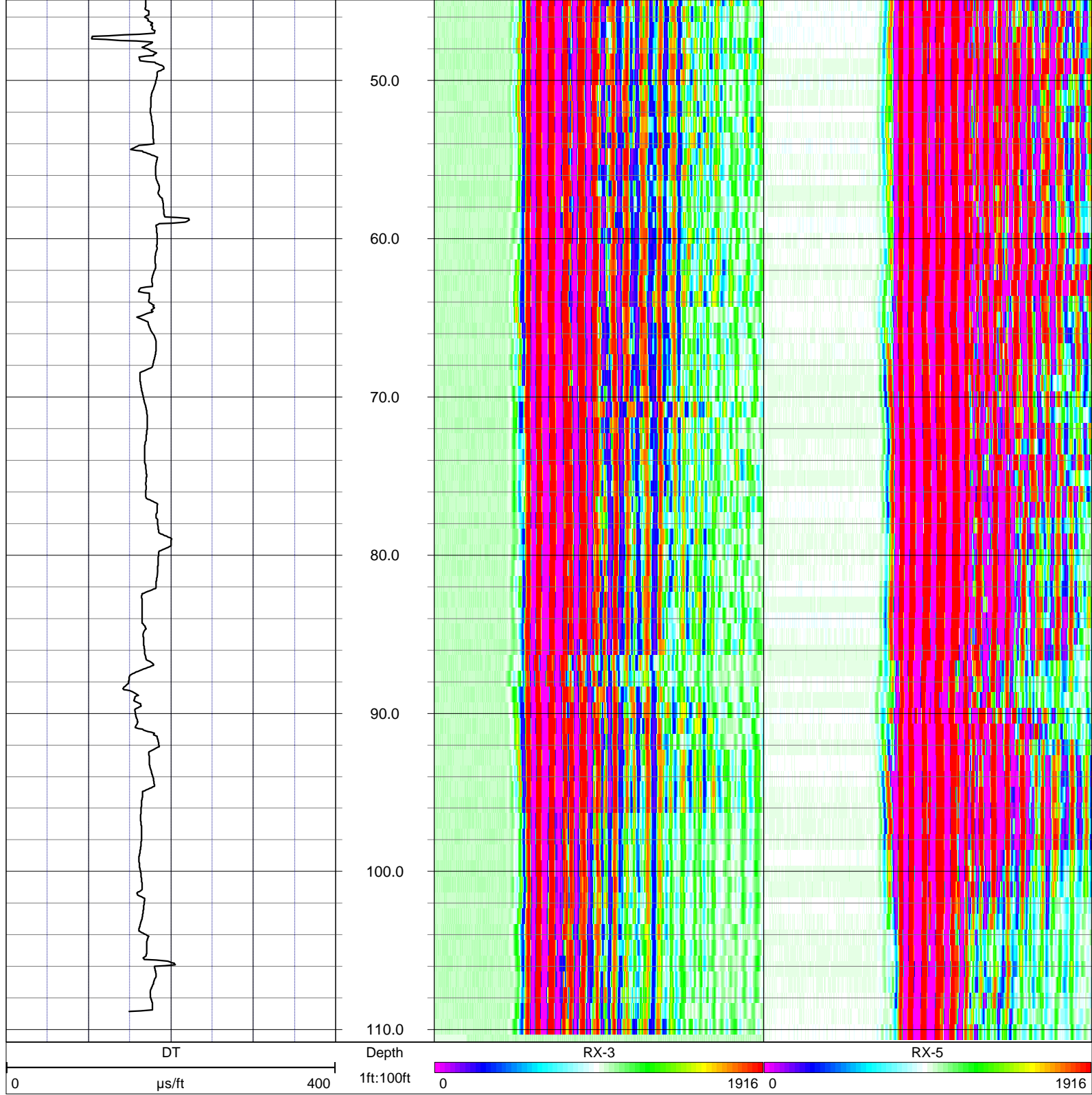
Licensed and Insured

<b>SRVC</b>	<b>RMBAKER LLC</b>	<b>COMPANY:</b>	<b>RMBAKER LLC</b>
<b>UWI</b>	<b>L8FEB5L</b>	<b>WELL NAME:</b>	<b>L8FEB5L</b>
<b>FLD</b>	<b>L-8 RESERVOIR</b>	<b>FIELD:</b>	<b>L-8 RESERVOIR</b>
<b>PROV</b>	<b>FL</b>	<b>COUNTRY:</b>	<b>USA</b>
<b>CTY</b>	<b>PALM BEACH</b>	<b>STATE:</b>	<b>FL</b>
		<b>COUNTY:</b>	<b>PALM BEACH</b>
<b>LOC:</b>	N/A	<b>ALL SERVICES:</b>	CALIPER NATURAL GAMMA DUAL INDUCTION ELECTRIC SONIC
<b>NOTES:</b>			
<b>SEC</b>		<b>TWP</b>	
		<b>RGE</b>	
<b>PERMANENT DATUM:</b>		<b>ELEVATION:</b>	
<b>LOG MEAS. FROM: GROUND SURFACE</b>		<b>COORDINATES:</b>	-80D22M33.99S 26D44M19.88S
<b>DRILLING MEAS. FROM:</b>			

<b>DATE</b>	13 May 14	<b>TYPE FLUID IN HOLE</b>	MUD
<b>RUN No</b>	1	<b>SALINITY</b>	
<b>TYPE LOG</b>	SONIC	<b>DENSITY</b>	
<b>DEPTH-DRILLER</b>	115	<b>LEVEL</b>	
<b>DEPTH-LOGGER</b>	115.5	<b>MAX. REC. TEMP.</b>	
<b>BTM LOGGED INTERVAL</b>		<b>LOGGING SPEED (FT/MIN)</b>	12
<b>TOP LOGGED INTERVAL</b>		<b>TROLLING DIRECTION</b>	UP
<b>DRILLER</b>	CENTERLINE	<b>PUMPING RATE (GPM)</b>	
<b>RECORDED BY</b>	RMBAKER LLC		
<b>WITNESSED BY</b>	B. COLLINS		

RUN NO.	BOREHOLE RECORD		CASING RECORD			
	BIT	FROM	SIZE	MAT.	FROM	TO
1	5.875	0	115			





**NOTES:**

While due care has been exercised in the performance of these measurements and observations, in accordance with methodologies utilized by the general practitioner, RMBAKER LLC can make no representations, warranties, or guarantees with respect to latent or concealed conditions that may exist, which may be beyond the detection capabilities of the methodologies used, or that may extend beyond the areas and depths surveyed. The geophysical well logs show subsurface conditions as they existed at the dates and locations shown, and it is not warranted that they are representative of subsurface conditions at other locations and times. If, at any time, different subsurface conditions from those observed are determined to be present, we must be advised and allowed to review and revise our observations if necessary.

Certificate of Authorization GB 458

END OF LOG