



RMBAKER LLC

WELL: CELL1&2 WEST
LOG STAGE: EXPLORATORY

Geology and Geophysics

8600 Oldbridge Lane
Orlando, FL 32819
mobile ph 407-733-8958
fax 407-370-4129

LOGS PROVIDED:
INDUCTION RESISTIVITIES
NATURAL GAMMA

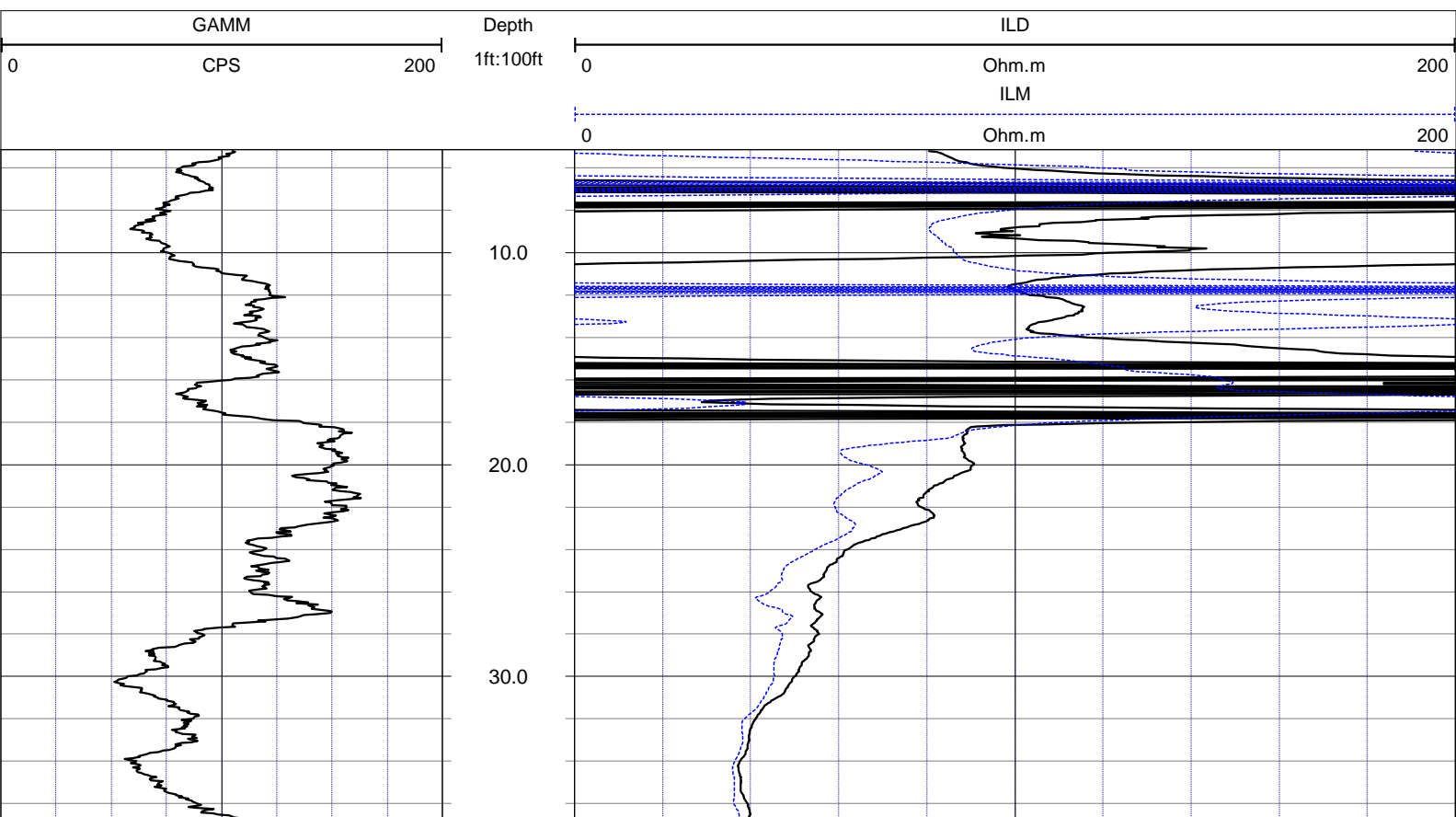
rob@rmbaker.com
www.rmbaker.com

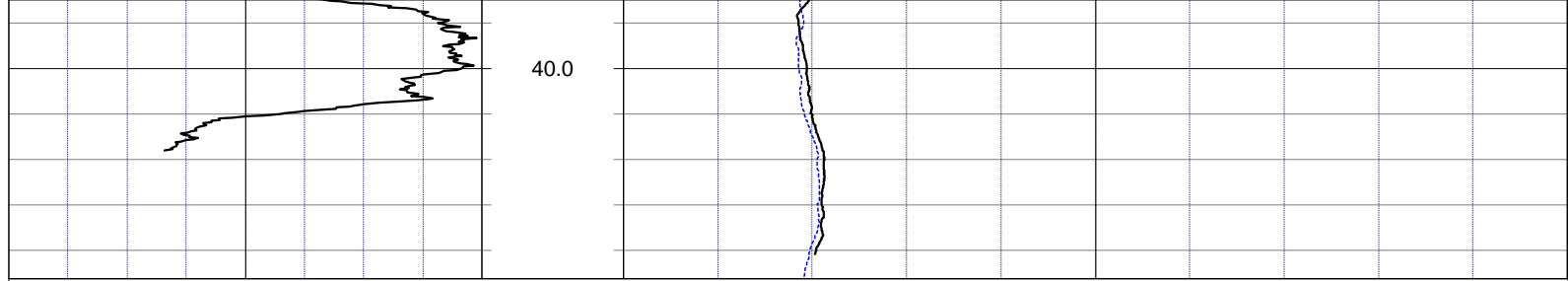
Licensed and Insured

SRVC	RMBAKER LLC	COMPANY:	RMBAKER LLC
UWI	CELL1&2 WEST	WELL NAME:	CELL1&2 WEST
FLD	L-8 RESERVOIR	FIELD:	L-8 RESERVOIR
PROV	FL	COUNTRY:	USA STATE: FL COUNTY: PALM BEACH
CTY	PALM BEACH	LOC:	N/A
		NOTES:	ALL SERVICES: DUAL INDUCTION NATURAL GAMMA VIDEO
PERMANENT DATUM:	SEC	TWP	RGE
			ELEVATION:
LOG MEAS. FROM: GROUND SURFACE			COORDINATES:

DATE	20 Jun 14	TYPE FLUID IN HOLE	WATER
RUN No	1	SALINITY	
TYPELOG	DUAL INDUCTION	DENSITY	
DEPTH-DRILLER		LEVEL	
DEPTH-LOGGER	50.9	MAX. REC. TEMP.	
BTM LOGGED INTERVAL		LOGGING SPEED (FT/MIN)	20
TOP LOGGED INTERVAL		TROLLING DIRECTION	UP
DRILLER		PUMPING RATE (GPM)	
RECORDED BY	RMBAKER LLC		
WITNESSED BY	B. COLLINS		

BOREHOLE RECORD				CASING RECORD			
RUN NO.	BIT	FROM	TO	SIZE	MAT.	FROM	TO
1				2	PVC	0	50.9
				SCREEN		35.8	50.4





GAMM		Depth	ILM	
0	CPS	1ft:100ft	Ohm.m	200
0			ILD	
0			Ohm.m	200

NOTES:

While due care has been exercised in the performance of these measurements and observations, in accordance with methodologies utilized by the general practitioner, RMBAKER LLC can make no representations, warranties, or guarantees with respect to latent or concealed conditions that may exist, which may be beyond the detection capabilities of the methodologies used, or that may extend beyond the areas and depths surveyed. The geophysical well logs show subsurface conditions as they existed at the dates and locations shown, and it is not warranted that they are representative of subsurface conditions at other locations and times. If, at any time, different subsurface conditions from those observed are determined to be present, we must be advised and allowed to review and revise our observations if necessary.

Certificate of Authorization GB 458

END OF LOG