

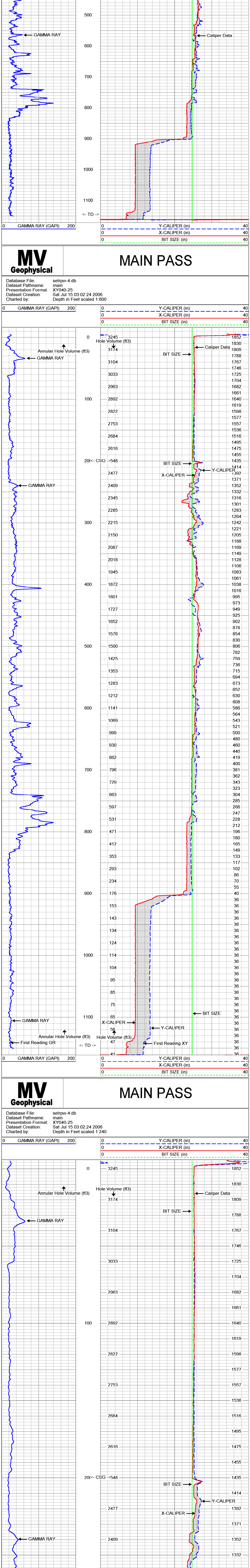
**MV Geophysical**  
 Company: Southeast Drilling Services, Inc.  
 Well: LR PW-4  
 Field: Pahokee-Belle Glades  
 County: Palm Beach  
 State: Florida

Location: Alsea Region Production Well Project  
 Highway: 715 North of Belle Glades  
 County: Palm Beach  
 State: Florida  
 City: Palm Beach  
 State: Florida

Company: SE Drilling Services, Inc.  
 Well: LR PW-4  
 Field: Pahokee-Belle Glades  
 County: Palm Beach  
 State: Florida

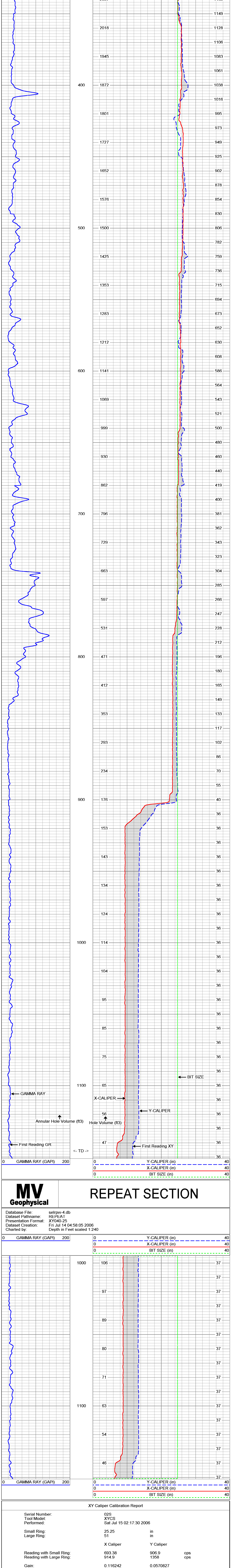
Operator: [Name]  
 Date: 15 Jul 2006  
 Time: 11:57 AM  
 Depth: 1140 ft

**MV Geophysical**  
**MAIN PASS**  
 Database File: selrpw-4.db  
 Dataset Pathname: main  
 Presentation Format: XY040-21  
 Dataset Creation: Sat Jul 15 03:02:24 2006  
 Charted by: [Name] Depth in Feet scaled 1:1200

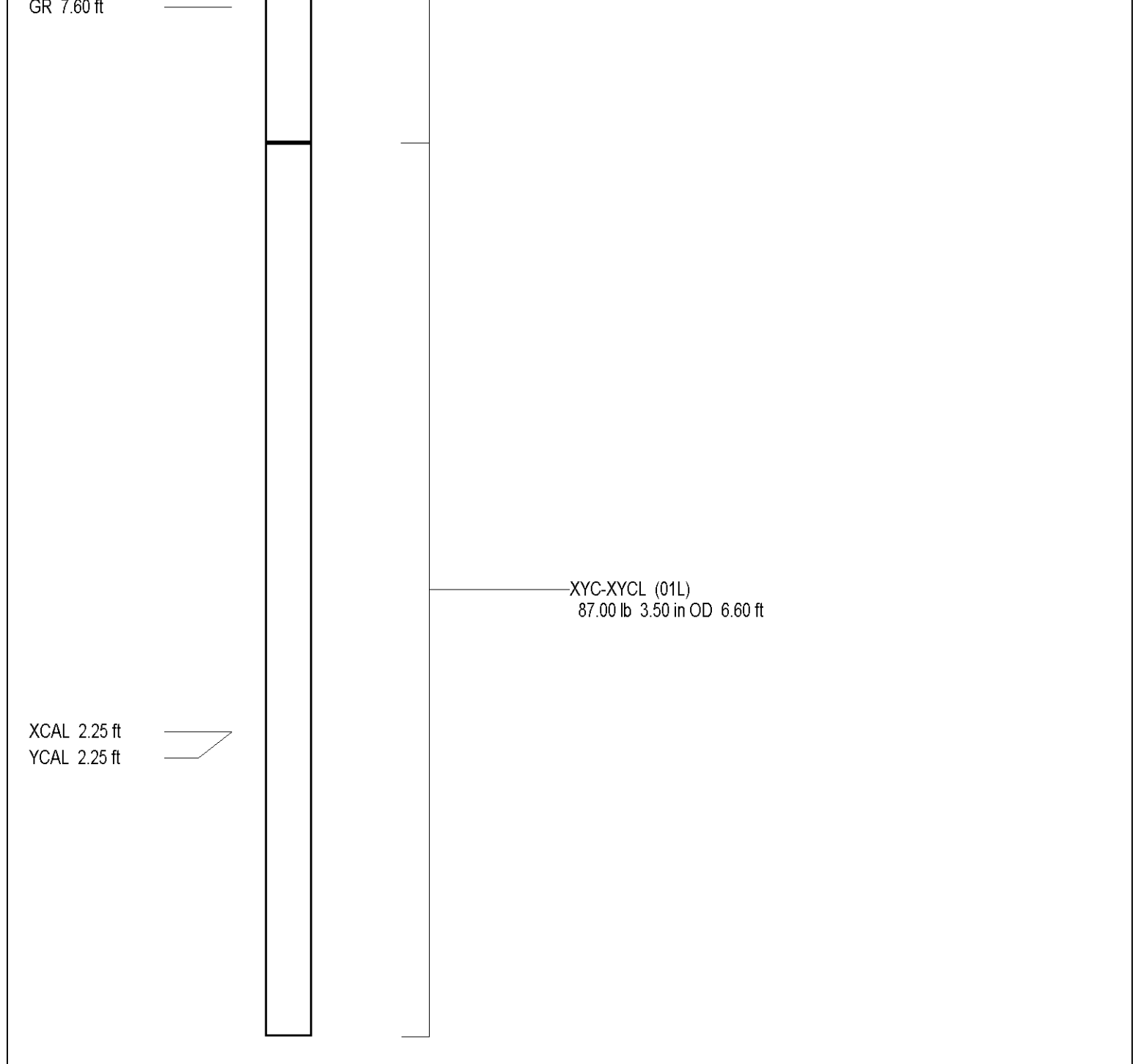


MAXIMUM Caliper Arm Extension: 51"  
 FUTURE CASING SIZE HAS A 16" OD.

**MV Geophysical**  
**MAIN PASS**  
 Database File: selrpw-4.db  
 Dataset Pathname: main  
 Presentation Format: XY040-25  
 Dataset Creation: Sat Jul 15 03:02:24 2006  
 Charted by: [Name] Depth in Feet scaled 1:600



**MV Geophysical**  
**REPEAT SECTION**  
 Database File: selrpw-4.db  
 Dataset Pathname: REPEAT  
 Presentation Format: XY040-25  
 Dataset Creation: Fri Jul 14 04:58:05 2006  
 Charted by: [Name] Depth in Feet scaled 1:240



XY Caliper Calibration Report

Serial Number:	02S	XYCS	Sat Jul 15 02:17:30 2006
Tool Model:	25 25	in	
Performed:	51	in	
Small Ring:	693 Caliper	906.9	cps
Large Ring:	933.38	1358	cps
	914.9		
Reading with Small Ring:	0.116242	0.0570827	
Reading with Large Ring:	-55.3501	-26.5183	
Gain:			
Offset:			

GR 7.60 ft  
 GR-GROH (ft)  
 40.00 lb 3.50 in OD 2.75 ft  
 XYCAL (ft)  
 87.00 lb 3.50 in OD 6.60 ft  
 XCAL 2.25 ft  
 YCAL 2.25 ft

Dataset: run/pass5  
 Total Length: 9.35 ft  
 Total Weight: 127.00 lb  
 O.D.: 3.50 in

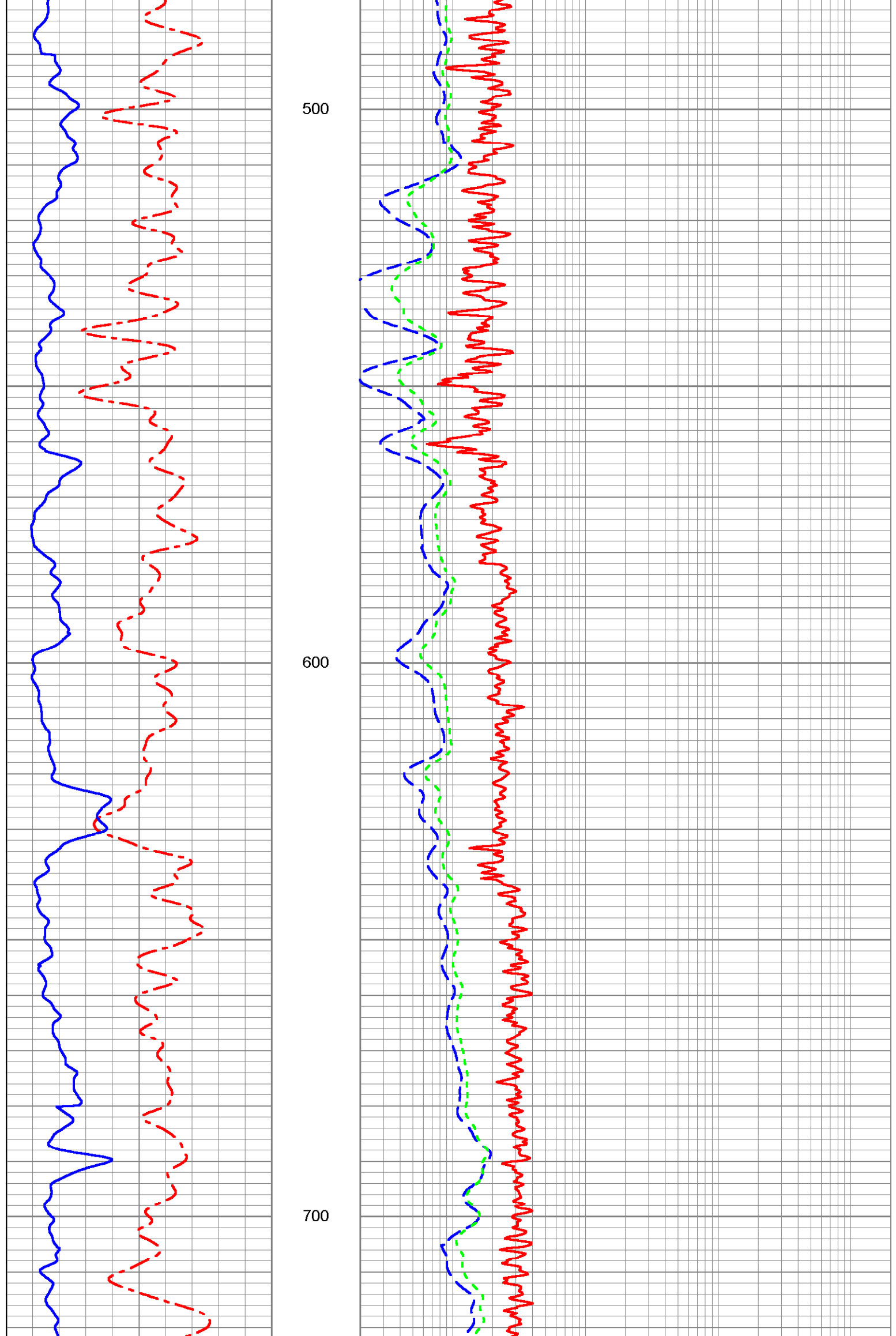
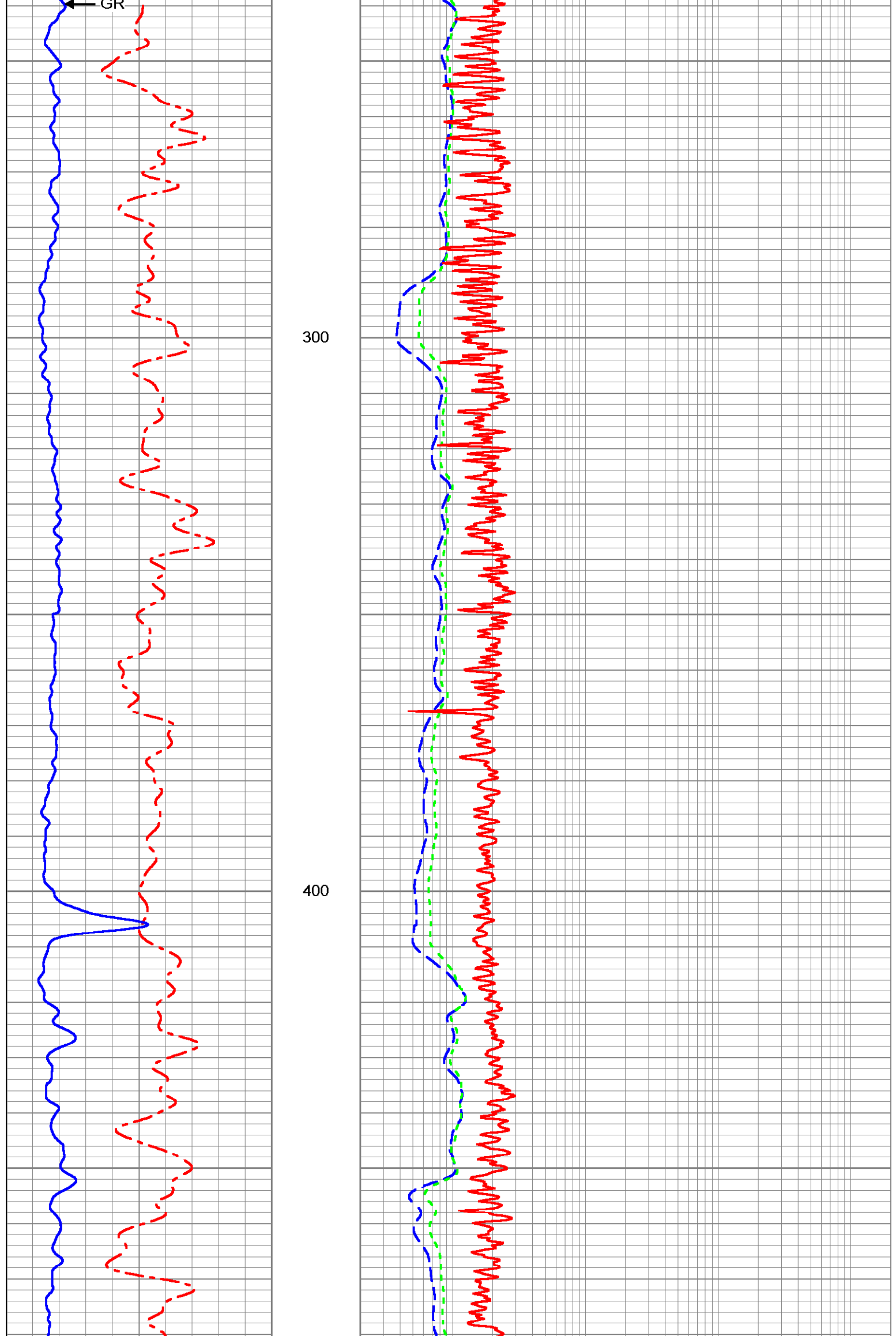
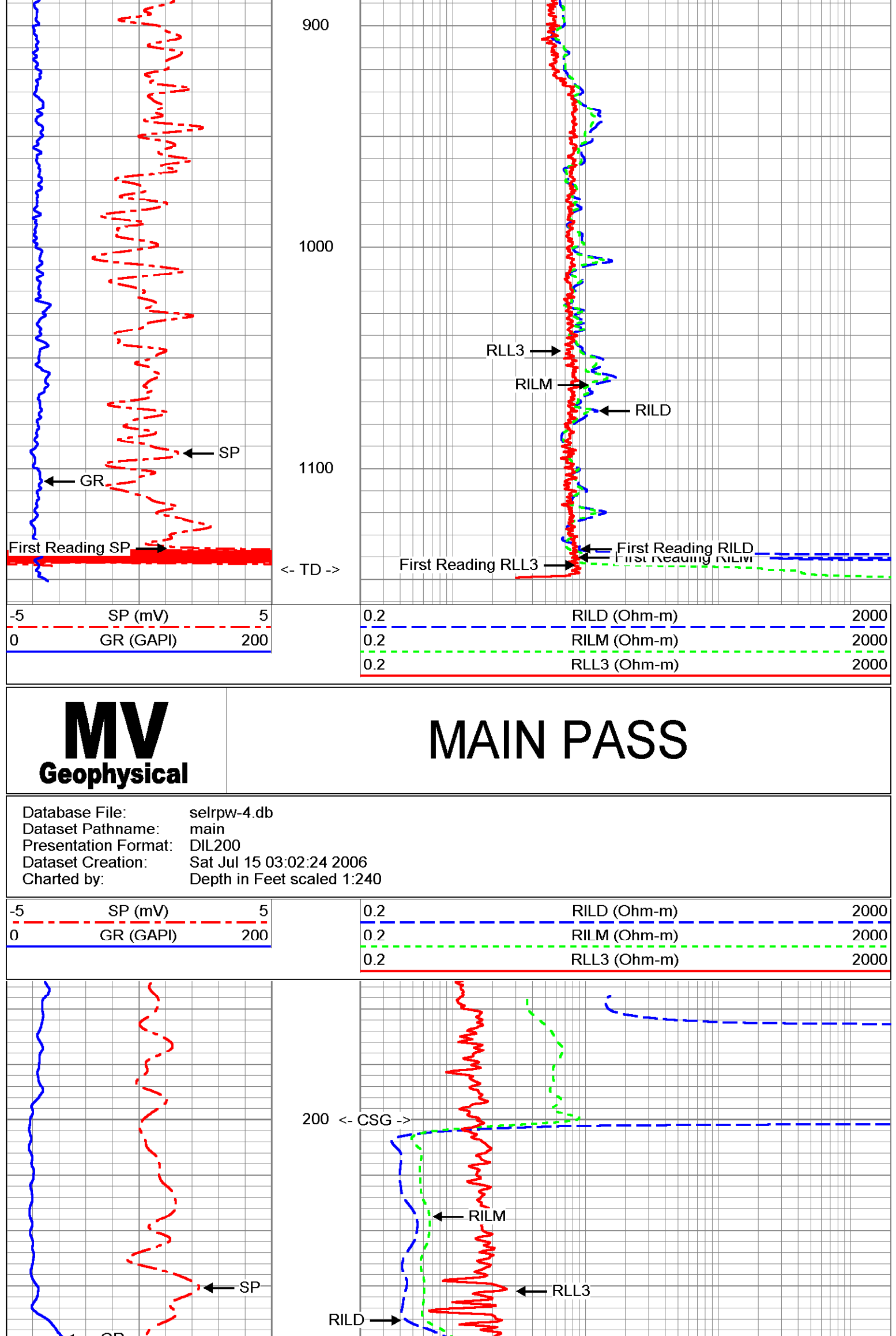
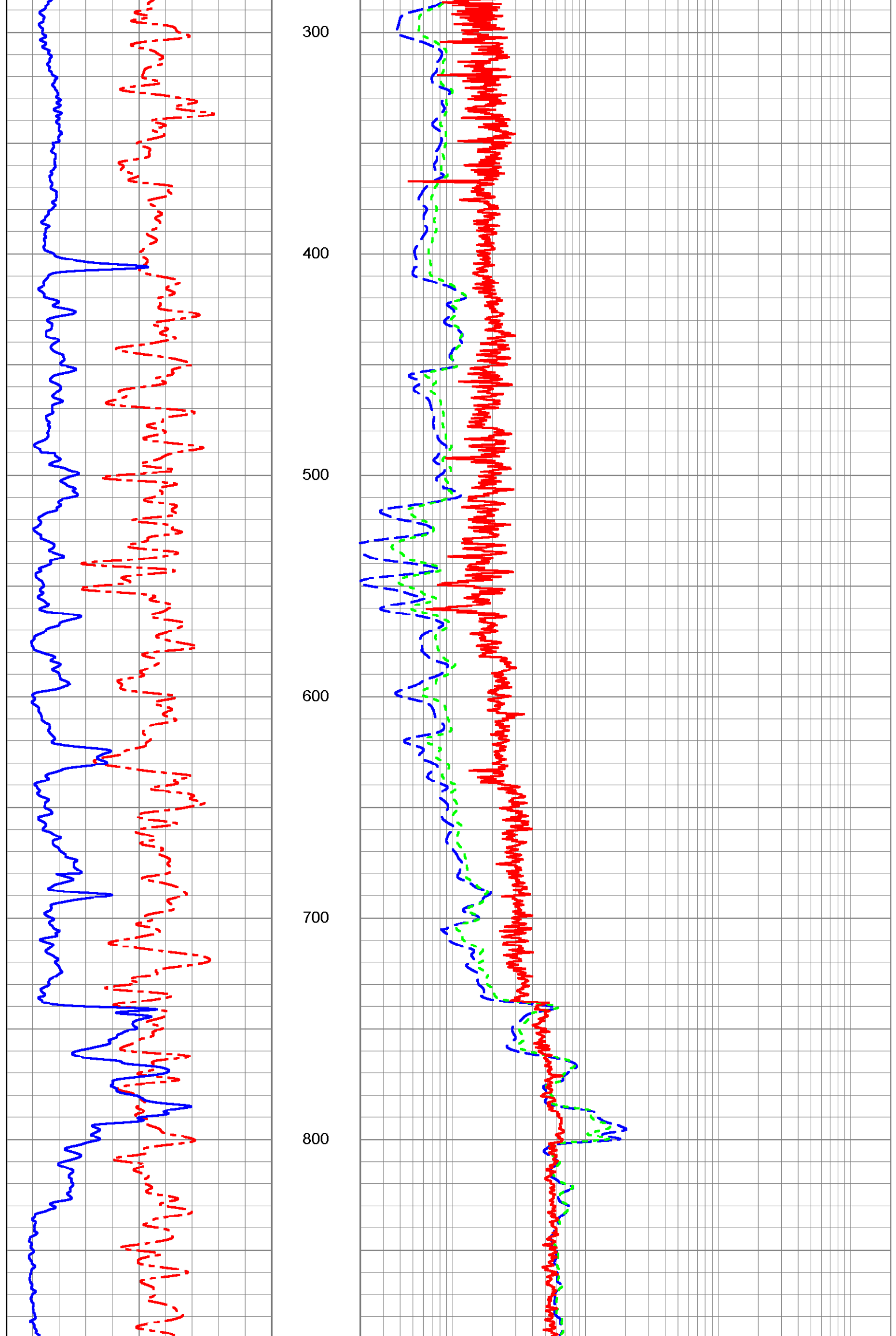
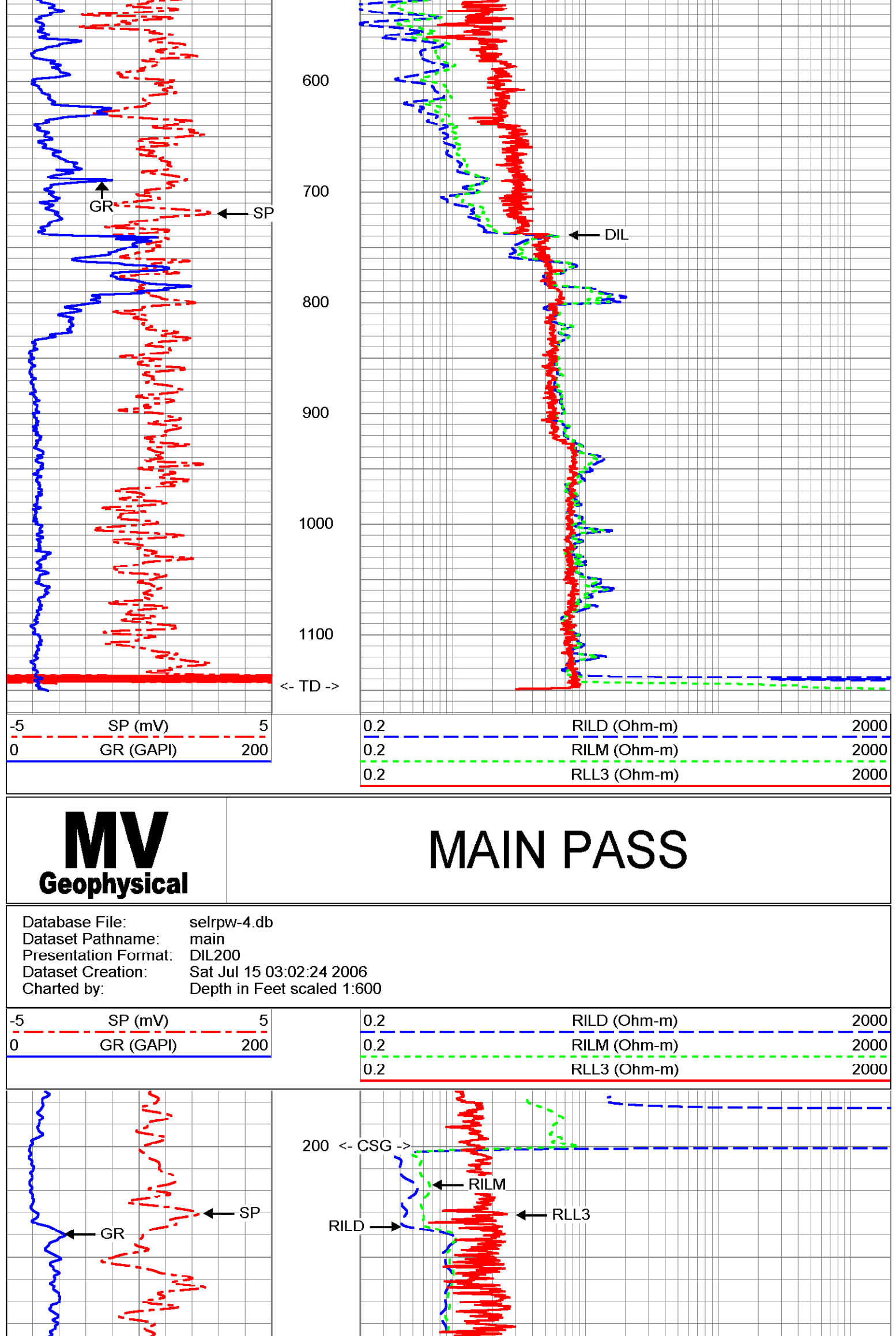
Company	SE Drilling Services, Inc.	Location	Lakes Region Production Well Project
Well	LR FW-4	County	Palm Beach
Field	Pahokee-Belle Glades	State/Priv	State/Priv
County	Palm Beach	City/Town	Palm Beach
Project	Lakes Region Production Well Project	Log Measured From	Top of Casing
Log Measured From	Top of Casing	Drilling Measured From	Top of Casing
Date	15-JUL-2006	Drilling Measured From	Top of Casing
Operator	SE Drilling Services, Inc.	Drilling Measured From	Top of Casing
Depth (m)	1165	Drilling Measured From	Top of Casing
Depth (ft)	1148	Drilling Measured From	Top of Casing
Open Hole Size	4.75	Drilling Measured From	Top of Casing
Type Full	M/LD	Drilling Measured From	Top of Casing
Type Partial		Drilling Measured From	Top of Casing
Estimated Cement Top		Drilling Measured From	Top of Casing
Time Well Entry	00:13:27.506	Drilling Measured From	Top of Casing
Time Well Exit	01:11:00.000	Drilling Measured From	Top of Casing
Equipment Number	011M	Drilling Measured From	Top of Casing
Location	011M	Drilling Measured From	Top of Casing
Well Name	011M	Drilling Measured From	Top of Casing
Well Number	2619	Drilling Measured From	Top of Casing
Well Size	1.148 longer	Drilling Measured From	Top of Casing
Well Type	1.148 longer	Drilling Measured From	Top of Casing
Well Depth	207	Drilling Measured From	Top of Casing
Well Diameter	0.375	Drilling Measured From	Top of Casing
Well Status	207	Drilling Measured From	Top of Casing
Well Completion	207	Drilling Measured From	Top of Casing
Well Production	207	Drilling Measured From	Top of Casing
Well ID	207	Drilling Measured From	Top of Casing
Well Log	207	Drilling Measured From	Top of Casing
Well Log Number	207	Drilling Measured From	Top of Casing
Well Log Date	207	Drilling Measured From	Top of Casing
Well Log Time	207	Drilling Measured From	Top of Casing
Well Log User	207	Drilling Measured From	Top of Casing
Well Log Version	207	Drilling Measured From	Top of Casing
Well Log Author	207	Drilling Measured From	Top of Casing
Well Log Date	207	Drilling Measured From	Top of Casing
Well Log Time	207	Drilling Measured From	Top of Casing
Well Log User	207	Drilling Measured From	Top of Casing
Well Log Version	207	Drilling Measured From	Top of Casing
Well Log Author	207	Drilling Measured From	Top of Casing

<< Fold Here >>

All interpretations are opinions based on inferences from electrical and other measurements and we cannot and do not guarantee the accuracy or correctness of any interpretation, and we shall not, except in the case of gross or willful negligence on our part, be liable or responsible for any loss, costs, damages, or expenses incurred or sustained by anyone resulting from any interpretation made by any of our officers, agents or employees. These interpretations are also subject to our general terms and conditions set out in our current Price Schedule.

Comments

Rm=4.115 ohm-m @ 82.4 degF



Company: **Southwest Drilling Services, Inc.**  
Well: **LR PW-4**  
Field: **Pahokee-Belle Glades**  
County: **Palm Beach**  
City: **Palm Beach**  
State: **FL**  
Country: **USA**

Location: **Lakes Region Production Well Project**  
**Highway 715 (North of Belle Glade)**  
**Palm Beach County Water Utility Department**

Date: **19-Feb-2007**  
Time: **14:50**  
Drilling Measure: **Top of Casing**  
Log Measured from: **Top of Casing**  
Elevation: **1450**  
Other Services: **A/C/R/B/C/D/L**  
Elevation: **1450**  
E.G.L.

Company: **SE Drilling Services, Inc.**  
Well: **LR PW-4**  
Field: **Pahokee-Belle Glades**  
County: **Palm Beach**  
State: **FL**  
Country: **USA**

Location: **Lakes Region Production Well Project**  
**Highway 715 (North of Belle Glade)**  
**Palm Beach County Water Utility Department**

Date: **19-Feb-2007**  
Time: **14:50**  
Drilling Measure: **Top of Casing**  
Log Measured from: **Top of Casing**  
Elevation: **1450**  
Other Services: **A/C/R/B/C/D/L**  
Elevation: **1450**  
E.G.L.

Time Well Entry: **13:30 2/19/07**  
Time Well Exit: **13:30 2/19/07**  
M/V/S: **1**  
M/V/S: **1**  
M/V/S: **1**

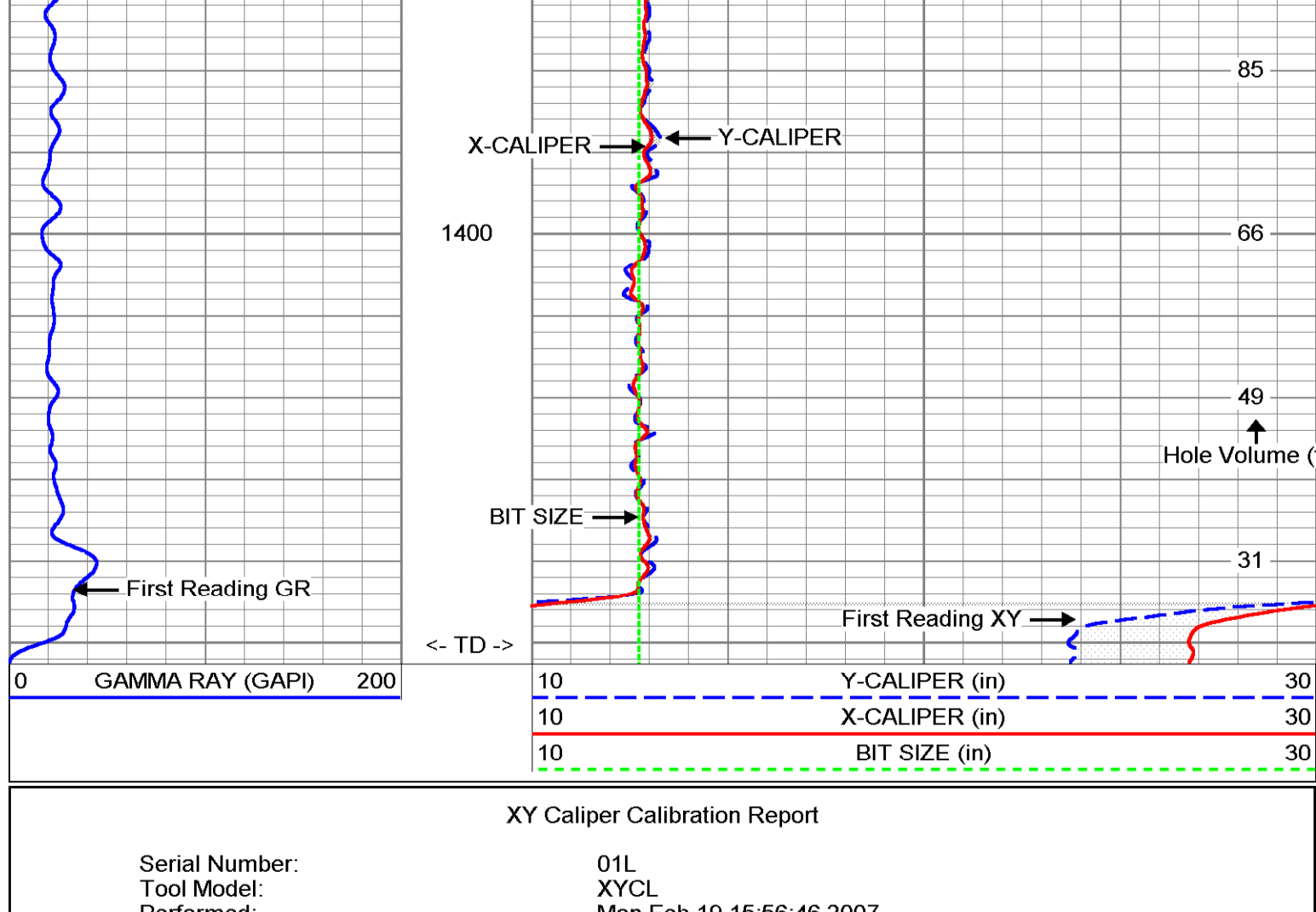
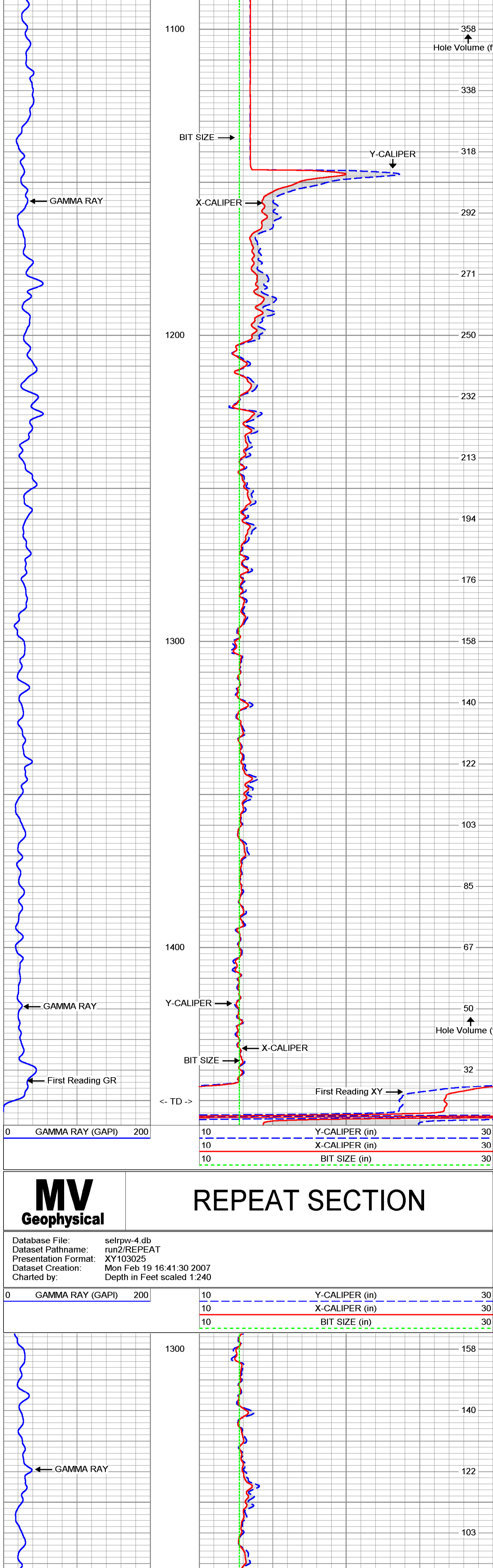
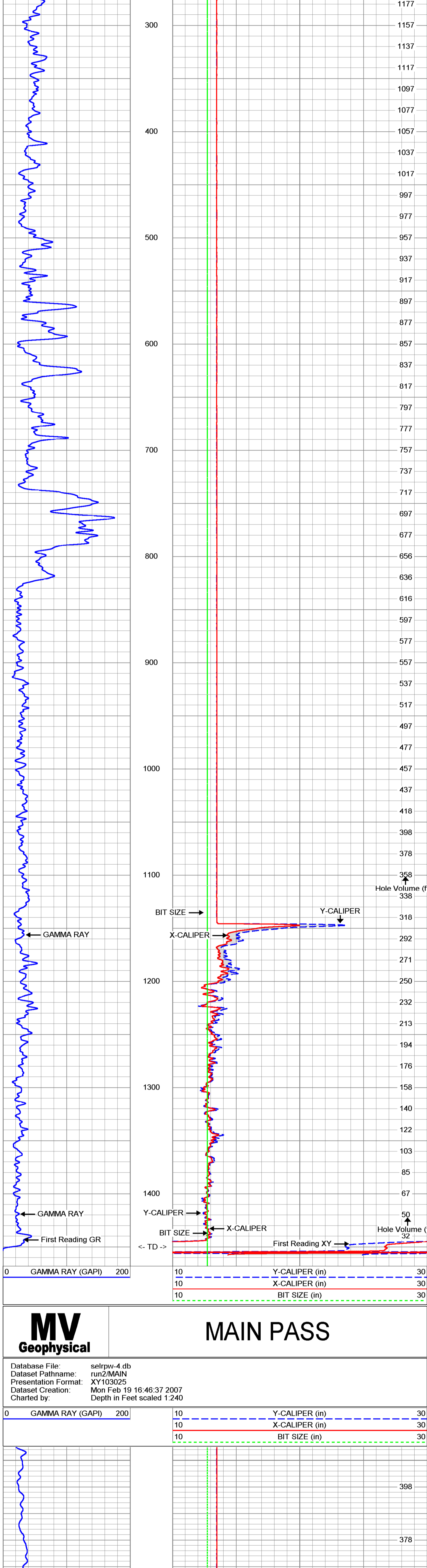
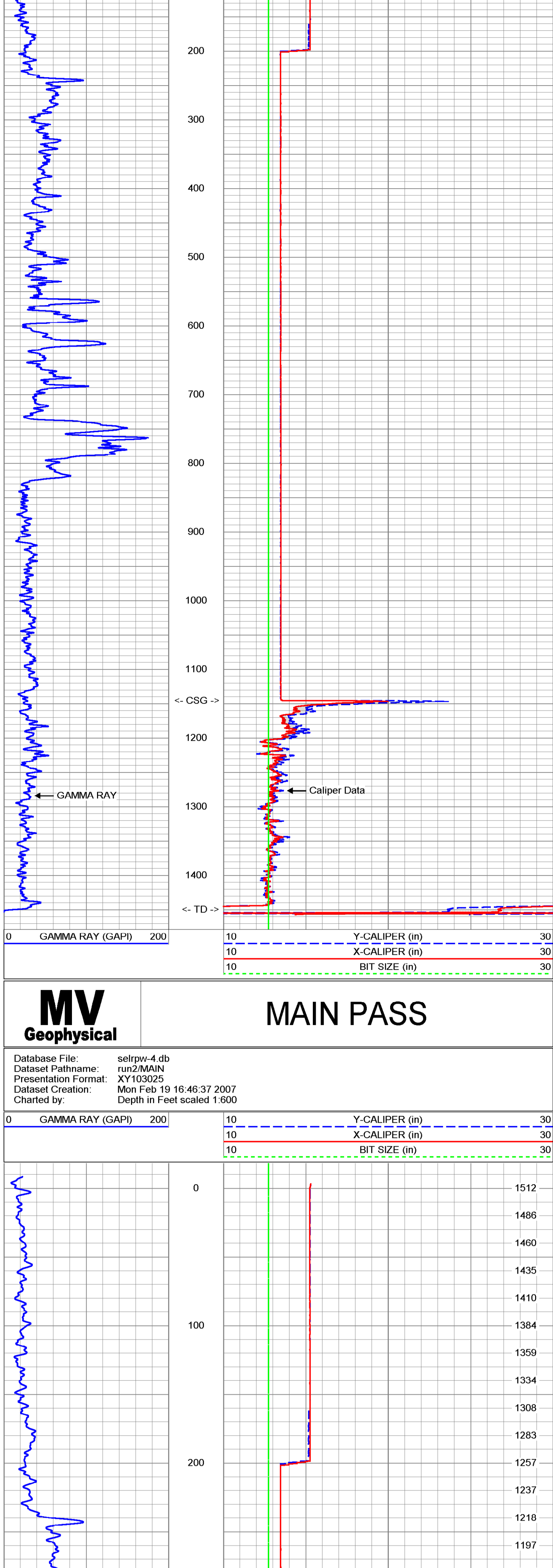
Location: **13:30 2/19/07**  
Well: **LR PW-4**  
Field: **Pahokee-Belle Glades**  
County: **Palm Beach**  
State: **FL**  
Country: **USA**

<< Fold Here >>

All interpretations are opinions based on inferences from electrical or other measurements and we cannot and do not guarantee the accuracy or correctness of any interpretation, and we shall not, except in the case of gross or willful negligence on our part, be liable or responsible for any loss, costs, damages, or expenses incurred or sustained by anyone resulting from any interpretation made by any of our officers, agents or employees. These interpretations are also subject to our general terms and conditions set out in our current Price Schedule.

Comments

MAXIMUM Caliper Arm Extension: 51"



**XY Caliper Calibration Report**

Serial Number: 01L  
Tool Model: XYCL  
Performed: Mon Feb 19 15:56:46 2007

Small Ring: 13.5 in  
Large Ring: 51 in

Reading with Small Ring: 723.2 cps  
Reading with Large Ring: 1177.1 cps

Gain: 0.0826173  
Offset: -46.2488

Y Caliper: 725.2 cps  
X Caliper: 1027.1 cps

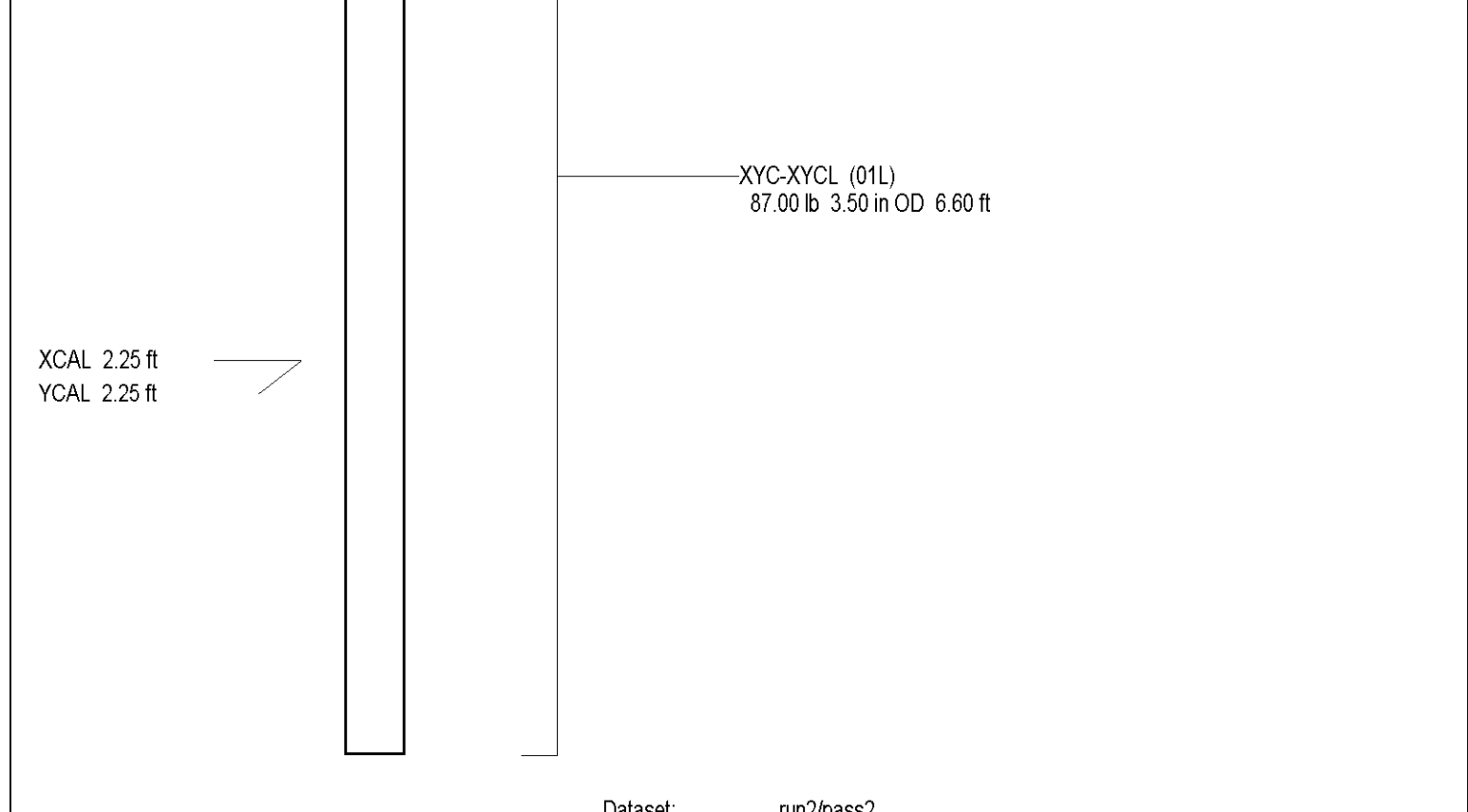
**Gamma Ray Calibration Report**

Serial Number: 01  
Tool Model: GROH  
Performed: Sat Feb 17 13:50:38 2007

Calibrator Value: 120 GAPI

Background Reading: 4.692 cps  
Calibrator Reading: 123.69 cps

Sensitivity: 1.00842 GAPI/cps

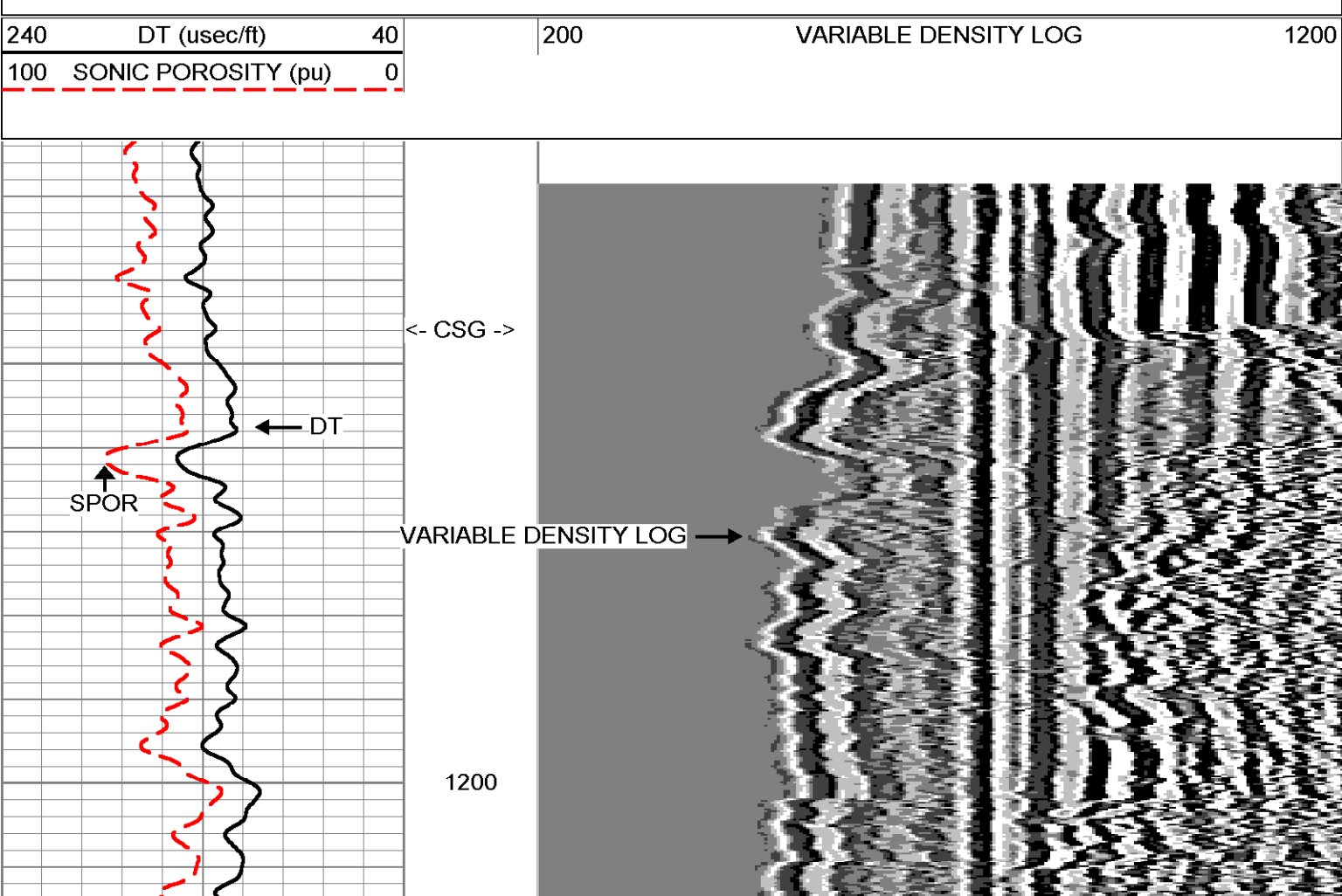
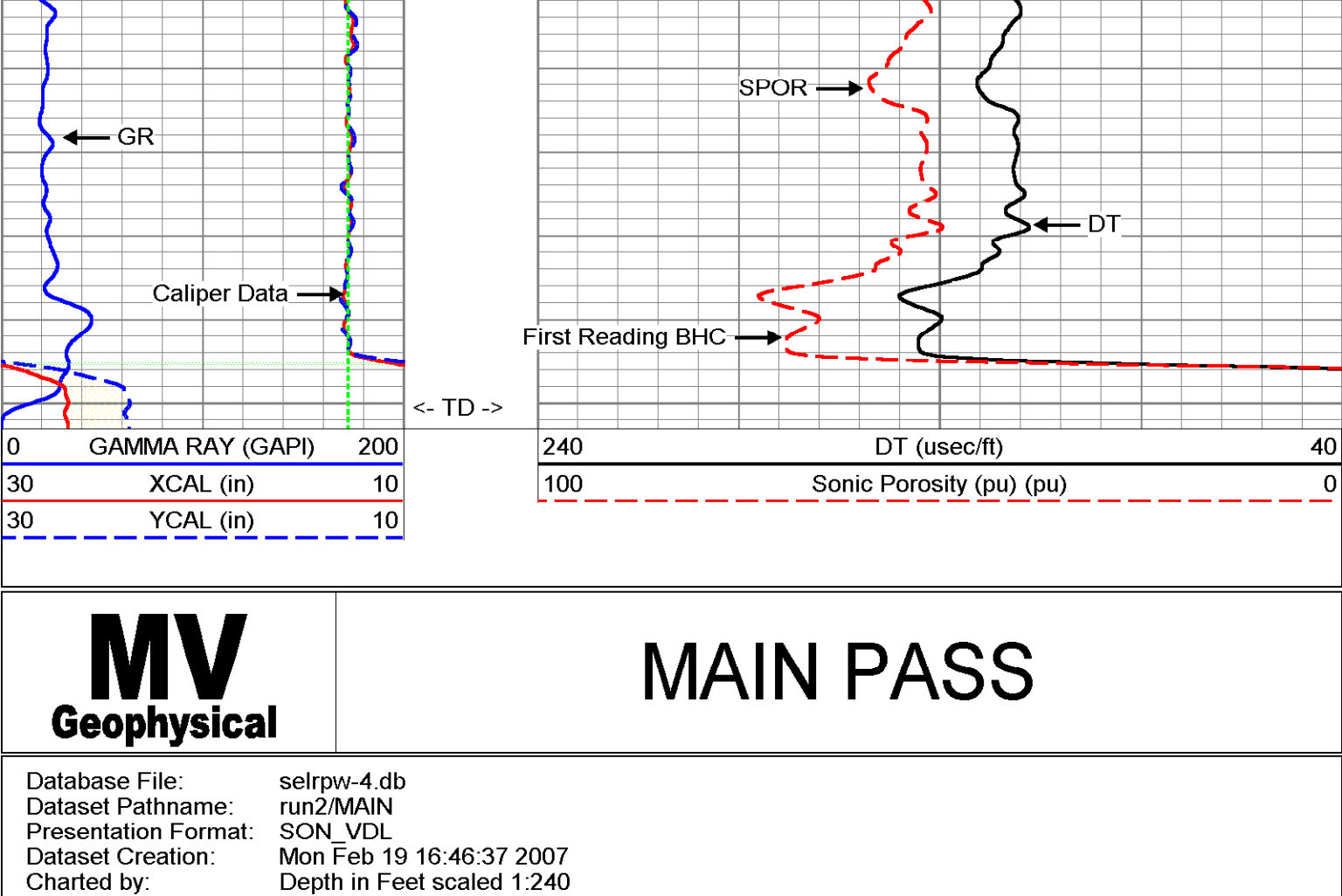
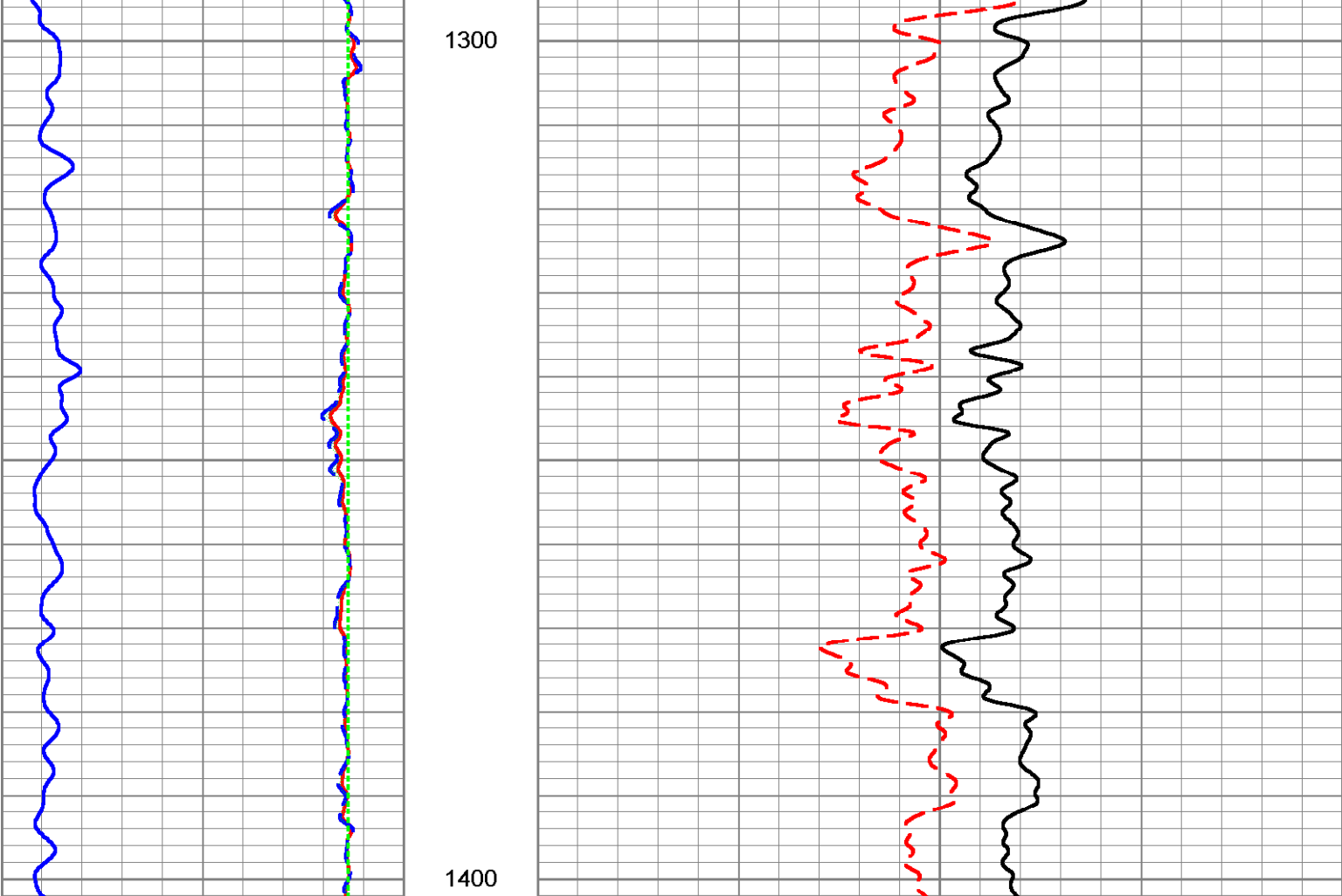
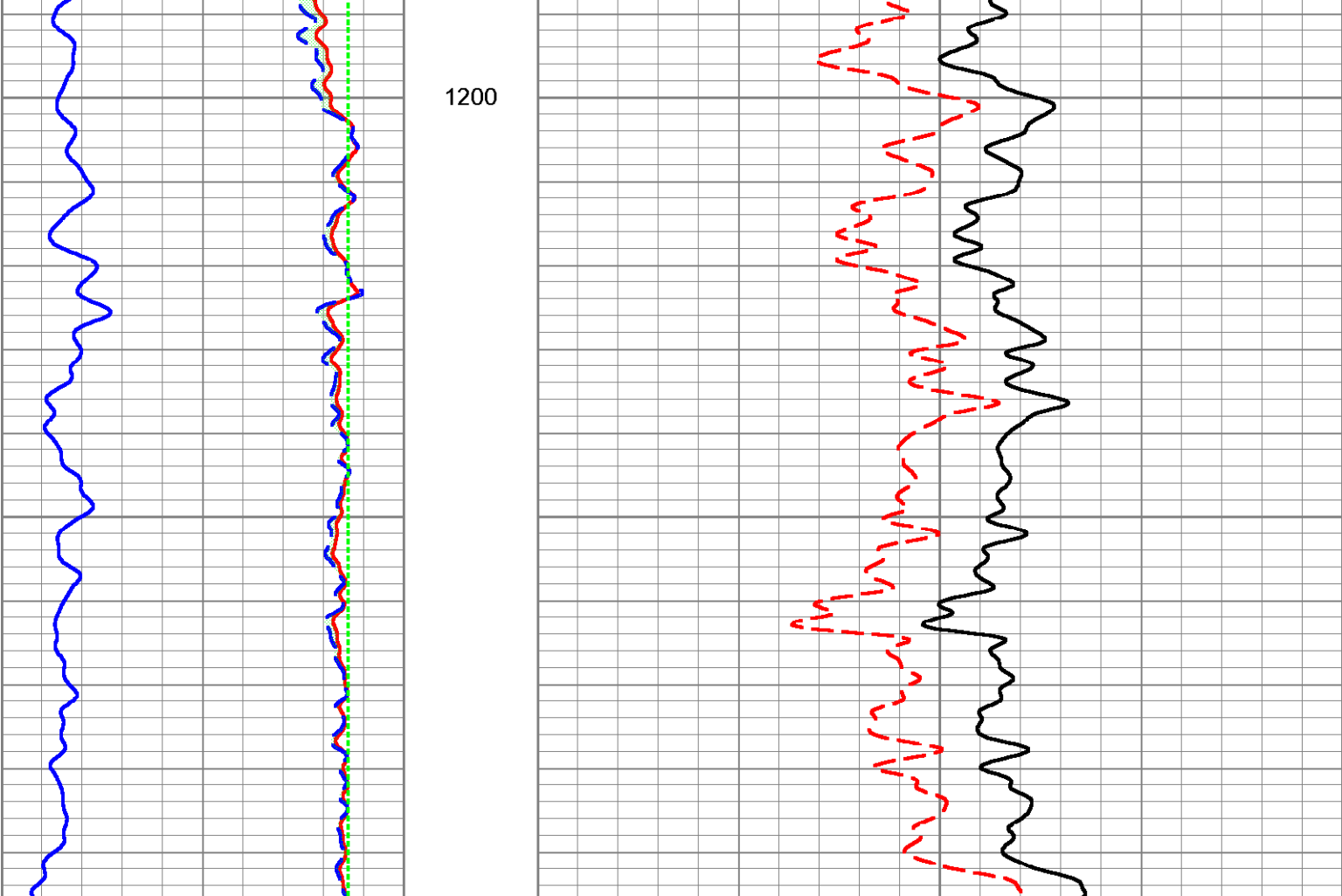
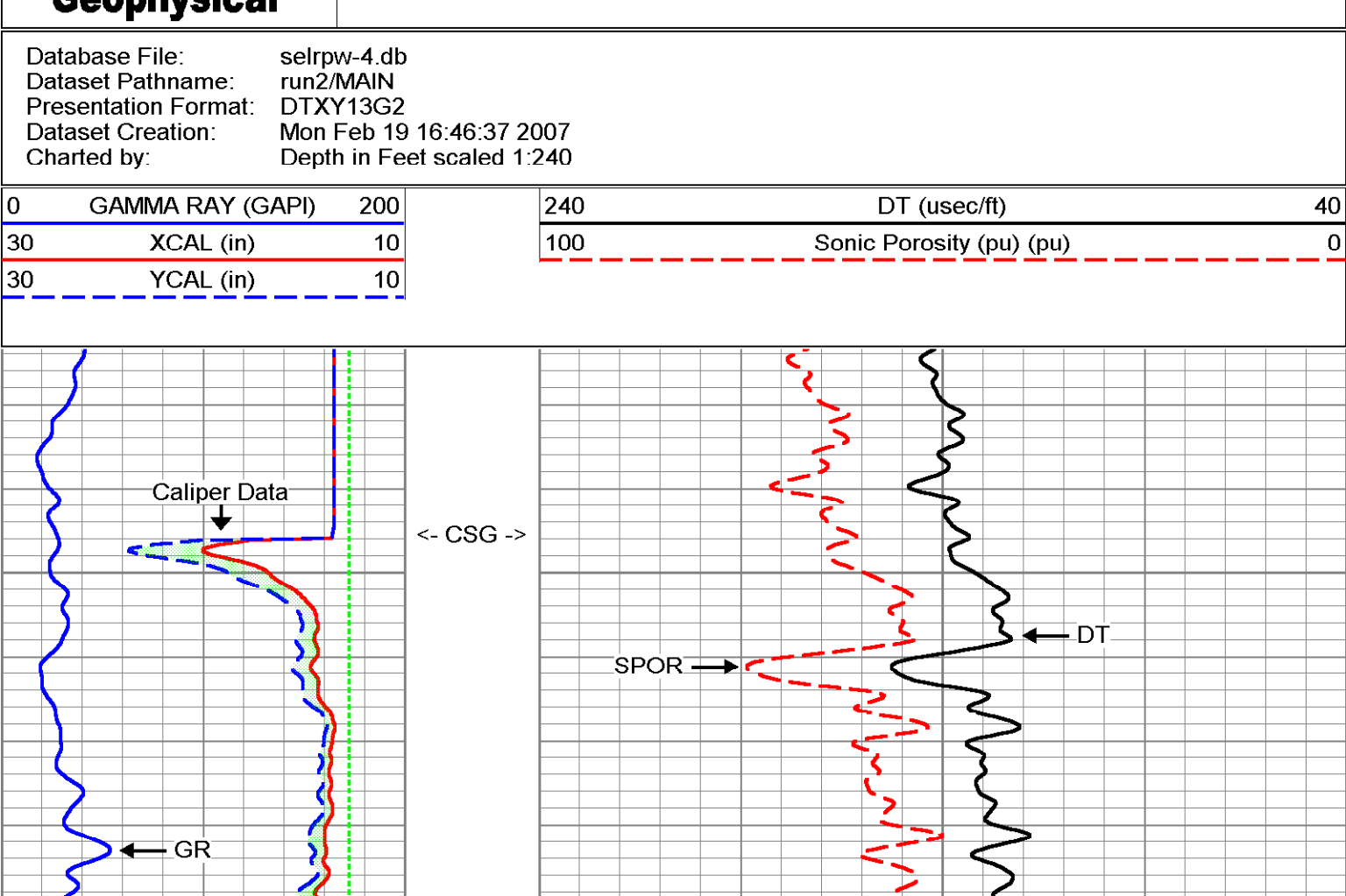
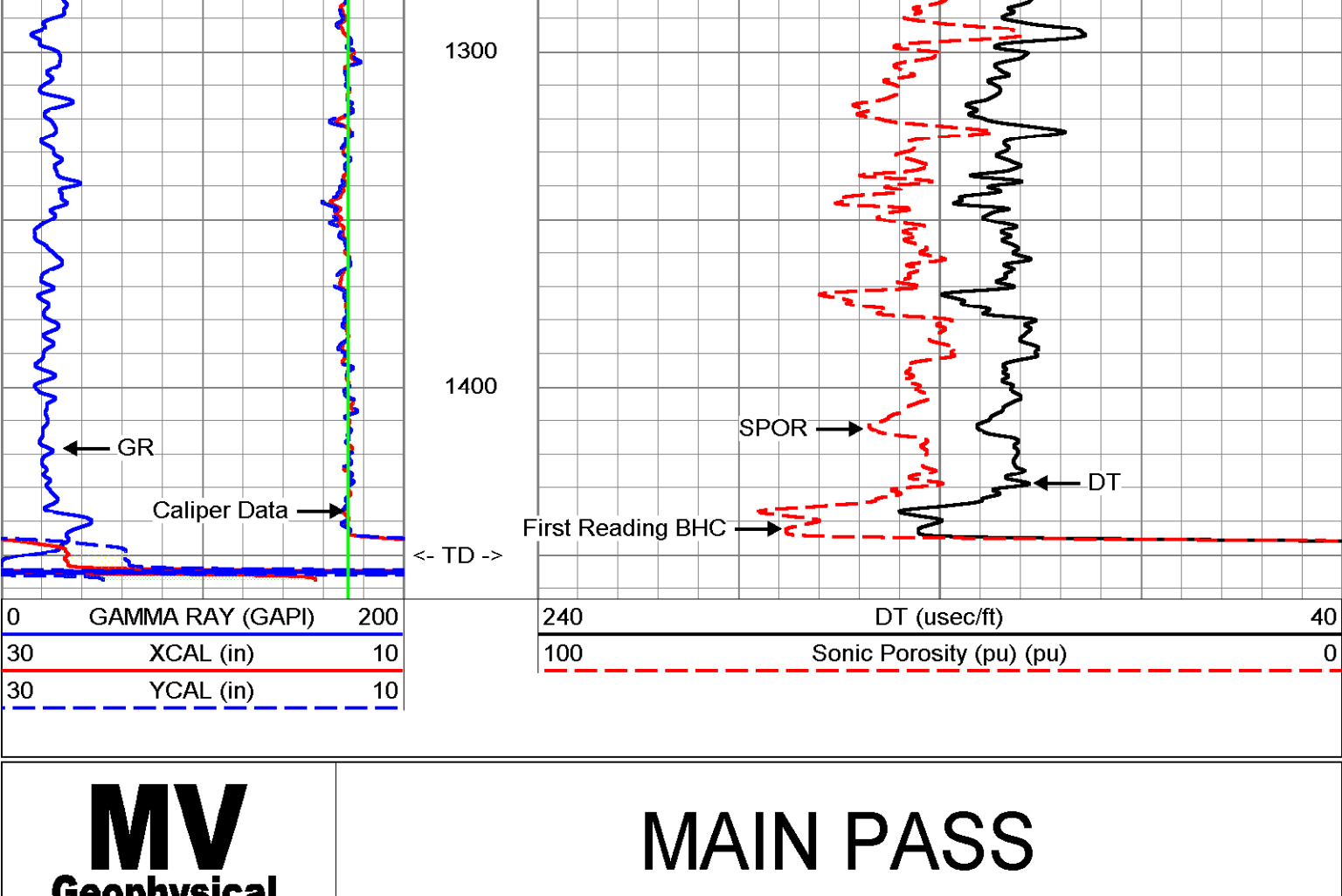
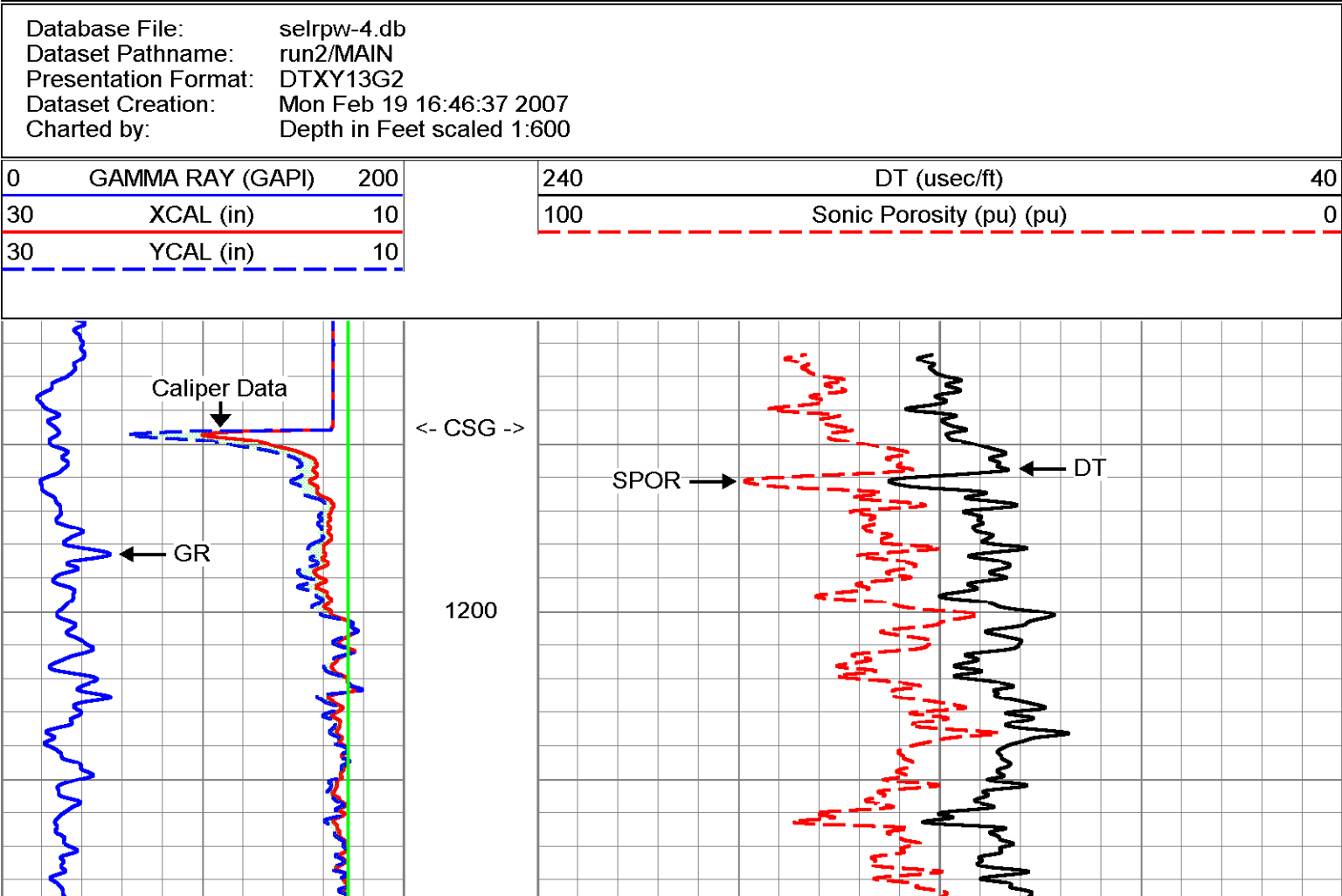
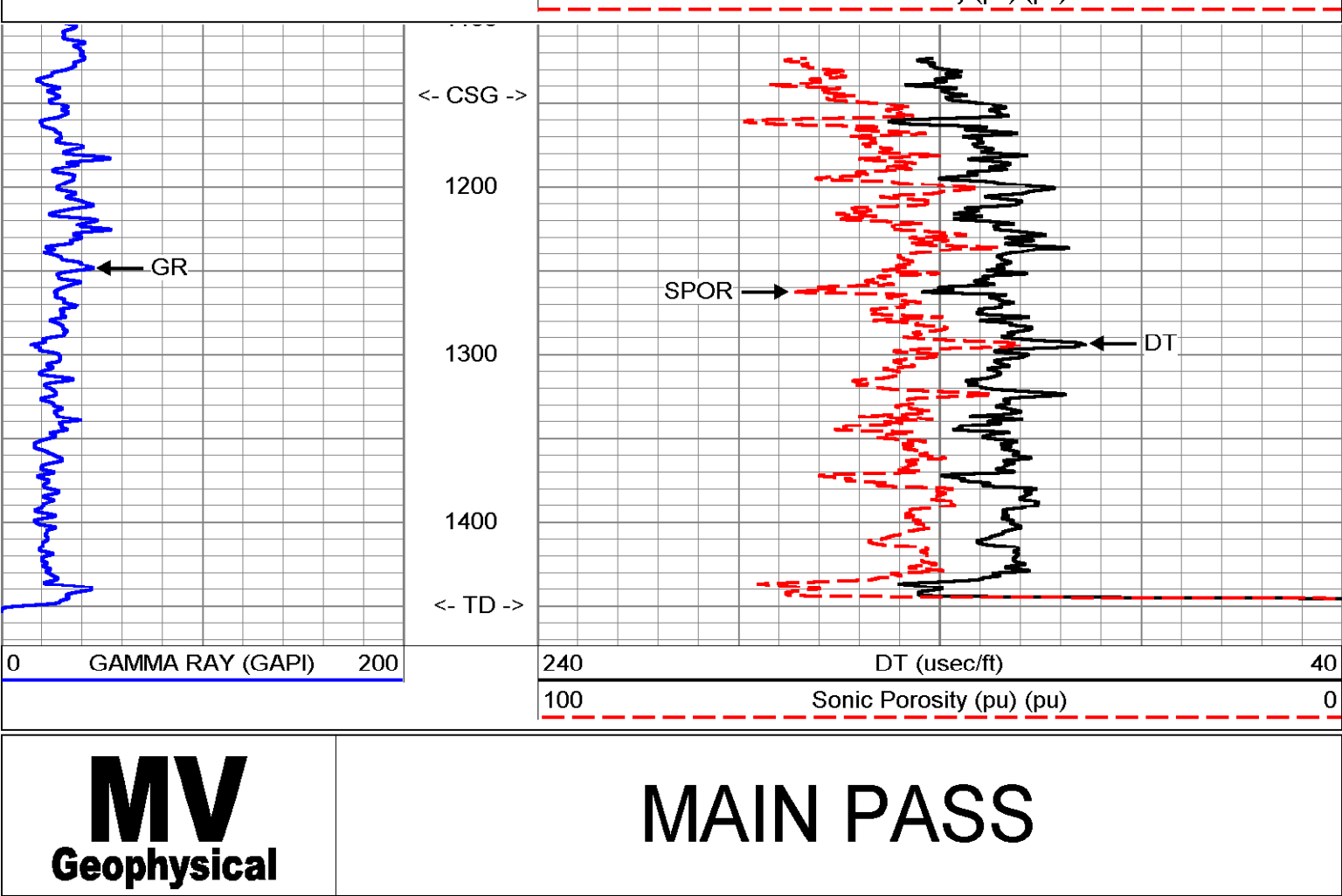


Company	SE Drilling Services, Inc.	Well	LR PW-4	Field	Pahokee-Belle Glades	County	Palm Beach	State/Prv	Florida	Location	Lakes Region Production Well Project Highway 715 (North of Belle Glade) Palm Beach County Water Utility Department
Date	18-FEB-2007	Permanent Datum	Top of Casing	Log Measured From	Top of Casing	Elevation	18-FEB-2007	Drilling Measured From	Top of Casing	Elevation	K.B. D.F. S.L.
Run Number	11467	Bottom Logged Interval	11467	Open Hole Size	12.75"	Type of Mucosity	H2O	Estimated Cement Top	13.15 2/19/06	Time Log on Bottom	17:00 2/19/06
Run Number	11468	Bottom Logged Interval	11468	Open Hole Size	12.75"	Type of Mucosity	H2O	Estimated Cement Top	13.15 2/19/06	Time Log on Bottom	17:00 2/19/06
Run Number	11469	Bottom Logged Interval	11469	Open Hole Size	12.75"	Type of Mucosity	H2O	Estimated Cement Top	13.15 2/19/06	Time Log on Bottom	17:00 2/19/06
Run Number	11470	Bottom Logged Interval	11470	Open Hole Size	12.75"	Type of Mucosity	H2O	Estimated Cement Top	13.15 2/19/06	Time Log on Bottom	17:00 2/19/06
Run Number	11471	Bottom Logged Interval	11471	Open Hole Size	12.75"	Type of Mucosity	H2O	Estimated Cement Top	13.15 2/19/06	Time Log on Bottom	17:00 2/19/06
Run Number	11472	Bottom Logged Interval	11472	Open Hole Size	12.75"	Type of Mucosity	H2O	Estimated Cement Top	13.15 2/19/06	Time Log on Bottom	17:00 2/19/06
Run Number	11473	Bottom Logged Interval	11473	Open Hole Size	12.75"	Type of Mucosity	H2O	Estimated Cement Top	13.15 2/19/06	Time Log on Bottom	17:00 2/19/06
Run Number	11474	Bottom Logged Interval	11474	Open Hole Size	12.75"	Type of Mucosity	H2O	Estimated Cement Top	13.15 2/19/06	Time Log on Bottom	17:00 2/19/06
Run Number	11475	Bottom Logged Interval	11475	Open Hole Size	12.75"	Type of Mucosity	H2O	Estimated Cement Top	13.15 2/19/06	Time Log on Bottom	17:00 2/19/06
Run Number	11476	Bottom Logged Interval	11476	Open Hole Size	12.75"	Type of Mucosity	H2O	Estimated Cement Top	13.15 2/19/06	Time Log on Bottom	17:00 2/19/06
Run Number	11477	Bottom Logged Interval	11477	Open Hole Size	12.75"	Type of Mucosity	H2O	Estimated Cement Top	13.15 2/19/06	Time Log on Bottom	17:00 2/19/06
Run Number	11478	Bottom Logged Interval	11478	Open Hole Size	12.75"	Type of Mucosity	H2O	Estimated Cement Top	13.15 2/19/06	Time Log on Bottom	17:00 2/19/06
Run Number	11479	Bottom Logged Interval	11479	Open Hole Size	12.75"	Type of Mucosity	H2O	Estimated Cement Top	13.15 2/19/06	Time Log on Bottom	17:00 2/19/06
Run Number	11480	Bottom Logged Interval	11480	Open Hole Size	12.75"	Type of Mucosity	H2O	Estimated Cement Top	13.15 2/19/06	Time Log on Bottom	17:00 2/19/06
Run Number	11481	Bottom Logged Interval	11481	Open Hole Size	12.75"	Type of Mucosity	H2O	Estimated Cement Top	13.15 2/19/06	Time Log on Bottom	17:00 2/19/06
Run Number	11482	Bottom Logged Interval	11482	Open Hole Size	12.75"	Type of Mucosity	H2O	Estimated Cement Top	13.15 2/19/06	Time Log on Bottom	17:00 2/19/06
Run Number	11483	Bottom Logged Interval	11483	Open Hole Size	12.75"	Type of Mucosity	H2O	Estimated Cement Top	13.15 2/19/06	Time Log on Bottom	17:00 2/19/06
Run Number	11484	Bottom Logged Interval	11484	Open Hole Size	12.75"	Type of Mucosity	H2O	Estimated Cement Top	13.15 2/19/06	Time Log on Bottom	17:00 2/19/06
Run Number	11485	Bottom Logged Interval	11485	Open Hole Size	12.75"	Type of Mucosity	H2O	Estimated Cement Top	13.15 2/19/06	Time Log on Bottom	17:00 2/19/06
Run Number	11486	Bottom Logged Interval	11486	Open Hole Size	12.75"	Type of Mucosity	H2O	Estimated Cement Top	13.15 2/19/06	Time Log on Bottom	17:00 2/19/06
Run Number	11487	Bottom Logged Interval	11487	Open Hole Size	12.75"	Type of Mucosity	H2O	Estimated Cement Top	13.15 2/19/06	Time Log on Bottom	17:00 2/19/06
Run Number	11488	Bottom Logged Interval	11488	Open Hole Size	12.75"	Type of Mucosity	H2O	Estimated Cement Top	13.15 2/19/06	Time Log on Bottom	17:00 2/19/06
Run Number	11489	Bottom Logged Interval	11489	Open Hole Size	12.75"	Type of Mucosity	H2O	Estimated Cement Top	13.15 2/19/06	Time Log on Bottom	17:00 2/19/06
Run Number	11490	Bottom Logged Interval	11490	Open Hole Size	12.75"	Type of Mucosity	H2O	Estimated Cement Top	13.15 2/19/06	Time Log on Bottom	17:00 2/19/06
Run Number	11491	Bottom Logged Interval	11491	Open Hole Size	12.75"	Type of Mucosity	H2O	Estimated Cement Top	13.15 2/19/06	Time Log on Bottom	17:00 2/19/06
Run Number	11492	Bottom Logged Interval	11492	Open Hole Size	12.75"	Type of Mucosity	H2O	Estimated Cement Top	13.15 2/19/06	Time Log on Bottom	17:00 2/19/06
Run Number	11493	Bottom Logged Interval	11493	Open Hole Size	12.75"	Type of Mucosity	H2O	Estimated Cement Top	13.15 2/19/06	Time Log on Bottom	17:00 2/19/06
Run Number	11494	Bottom Logged Interval	11494	Open Hole Size	12.75"	Type of Mucosity	H2O	Estimated Cement Top	13.15 2/19/06	Time Log on Bottom	17:00 2/19/06
Run Number	11495	Bottom Logged Interval	11495	Open Hole Size	12.75"	Type of Mucosity	H2O	Estimated Cement Top	13.15 2/19/06	Time Log on Bottom	17:00 2/19/06
Run Number	11496	Bottom Logged Interval	11496	Open Hole Size	12.75"	Type of Mucosity	H2O	Estimated Cement Top	13.15 2/19/06	Time Log on Bottom	17:00 2/19/06
Run Number	11497	Bottom Logged Interval	11497	Open Hole Size	12.75"	Type of Mucosity	H2O	Estimated Cement Top	13.15 2/19/06	Time Log on Bottom	17:00 2/19/06
Run Number	11498	Bottom Logged Interval	11498	Open Hole Size	12.75"	Type of Mucosity	H2O	Estimated Cement Top	13.15 2/19/06	Time Log on Bottom	17:00 2/19/06
Run Number	11499	Bottom Logged Interval	11499	Open Hole Size	12.75"	Type of Mucosity	H2O	Estimated Cement Top	13.15 2/19/06	Time Log on Bottom	17:00 2/19/06
Run Number	11500	Bottom Logged Interval	11500	Open Hole Size	12.75"	Type of Mucosity	H2O	Estimated Cement Top	13.15 2/19/06	Time Log on Bottom	17:00 2/19/06

All interpretations are opinions based on inferences from electrical or other measurements and we cannot and do not guarantee the accuracy or correctness of any interpretation, and we shall not, except in the case of gross or willful negligence on our part, be liable or responsible for any loss, costs, damages, or expenses incurred or sustained by anyone resulting from any interpretation made by any of our officers, agents or employees. These interpretations are also subject to our general terms and conditions set out in our current Price Schedule.

Comments

Sonic Porosity was run on a Limestone Matrix (=47.5)



Dataset: run2/pass6  
 Total Length: 16.00 ft  
 Total Weight: 127.00 lb  
 O.D.: 3.50 in

Company: Southeast Drilling Services, Inc.  
Well: LR PW-4  
Field: Pahokee-Belle Glades  
County: Palm Beach  
State/Prv: Florida

Location: Lakes Region Production Well Project  
Highway 715 (North of Belle Glade)  
Palm Beach County Water Utility Department

Other Services: XY/R, DIL/LL3, BHC/DL, Elevation

Permanent Datum: Top of Casing  
Log Measured From: Top of Casing  
Drilling Measured From: Top of Casing

Date: 19-FEB-2007  
Run Number: TMO  
Depth Driller: 1450  
Bottom Logged Interval: 1445-1448  
OD Log Interval: 12-75  
OD Log Interval: 12-75  
Type Fluid: H2O  
Density / Viscosity: na  
Max. Recorded Temp: na  
Estimated Cement Top: na

Time Well Ready: 13:15:21/9/06  
Time Logger on Bottom: 16:00:21/9/06  
Equipment Number: MWCS-1  
Location: FTM

Recorded By: S/Miller  
Witnessed By: B. Garrison (SEI)

Run Number: 24  
TMO: 12.75

Batch/Job Record: 1160  
To: 1160  
Size: 200  
Weight: 1160  
From: 1160  
To: 1160

Casing Record: 17.25  
Surface String: 13.5  
Production String: 13.5  
Date: 2007/04/2

Run Number	Batch/Job Record	To	Size	Weight	From	To
24	1160	1160	200	1160	1160	1160
TMO	12.75	1160	1460	1460	1160	1160

All interpretations are opinions based on inferences from electrical or other measurements and we cannot and do not guarantee the accuracy or correctness of any interpretation, and we shall not, except in the case of gross or willful negligence on our part, be liable or responsible for any loss, costs, damages, or expenses incurred or sustained by anyone resulting from any interpretation made by any of our officers, agents or employees. These interpretations are also subject to our general terms and conditions set out in our current Price Schedule.

Comments: Rw=2.170 ohm-m @ 76.8 degF

