

Identification\_Information:  
Citation:

**Mike J. Bartholomew**  
**Biscayne Engineering**

Citation\_Information:  
Originator: Mike J. Bartholomew  
Publication\_Date: Unpublished material  
Publication\_Time: Unknown  
Title: Martin County Tape Down Wells (M1045)  
Edition: 1.0  
Series\_Information:  
Publication\_Information:  
Larger\_Work\_Citation:  
Citation\_Information:  
Series\_Information:  
Publication\_Information:

Description:

**Purpose**

Abstract: Beeline Highway, Martin County, Florida  
Purpose:  
To establish elevations on the well and on a disc set adjacent to the well and provide the results in NAVD-88 format in accordance with the CERP height modernization program

accordance

Supplemental\_Information: None

Time\_Period\_of\_Content:

**Survey Date**

Time\_Period\_Information:  
Single\_Date/Time:  
Range\_of\_Dates/Times:  
Beginning\_Date: 20050801  
Ending\_Date: 20050901  
Multiple\_Dates/Times:  
Currentness\_Reference: Date and Time Range of Field/Office Work

Status:

Progress: Complete  
Maintenance\_and\_Update\_Frequency: Unknown

Spatial\_Domain:

Bounding\_Coordinates:  
West\_Bounding\_Coordinate: -080°22' 26"  
East\_Bounding\_Coordinate: -080°22' 26"  
North\_Bounding\_Coordinate: +26°57' 30"  
South\_Bounding\_Coordinate: +26°57' 30"

Keywords:

Theme:  
Theme\_Keyword\_Thesaurus: None  
Theme\_Keyword: Well Site  
Theme\_Keyword: MARTIN  
Theme\_Keyword: M1045

Place:

Place\_Keyword\_Thesaurus: None  
Place\_Keyword: Well Site  
Place\_Keyword: Martin County, Florida  
Place\_Keyword: Beeline Highway  
Place\_Keyword: Sec. 30, Twp. 40S, Rge. 40 E

Stratum:

Temporal:

Access\_Constraints: None

Use\_Constraints: None

Point\_of\_Contact:

**Elvie Ebanks**

**SFWMD**

District

Contact\_Information:  
Contact\_Person\_Primary:  
Contact\_Person: Elvie Ebanks  
Contact\_Organization: South Florida Water Management

Contact\_Organization\_Primary:  
Contact\_Position: Project Manager  
Contact\_Address:  
Address\_Type: mailing and physical address  
Address: 3301 Gun Club Road  
City: West Palm Beach  
State\_or\_Province: FL  
Postal\_Code: 33406  
Country: USA

M1045.gen

Contact\_Voice\_Telephone: (561) 753-2400 x4717

Contact\_Facsimile\_Telephone: (561) 791-4093

Security\_Information:

Cross\_Reference:

Citation\_Information:

Series\_Information:

Publication\_Information:

Data\_Quality\_Information:

Attribute\_Accuracy:

Attribute\_Accuracy\_Report:

## Equipment Used

This Survey was prepared using GPS and Leveling instruments. The horizontal location of the well was established using GPS.

The vertical data was collected using Level Wild NA-2. Coordinates are based on the Florida State Plane Coordinate System, East Zone, NAD 83/90. Elevations based on NAVD88

Logical\_Consistency\_Report:

Horizontal data was established using NGS control points AJ8864 (F 547) and AJ8886 (E 547).

Vertical data was established using NGS benchmarks AJ8864 (F 547) and AJ8886 (E 547).

Coordinates are based on the Florida State Plane Coordinate System, East Zone, NAD 83/90.

Elevations are based on NAVD88.

Completeness\_Report:

Horizontal location taken at approximate center of well.

## Project Results

Lat. +26°57' 29.524"

Long. -080°22' 25.563"

N 954482.71

E 860157.95

New leveled elevations.

New site benchmark "M1045" is a standard S.F.W.M.D. brass disc set in a standard concrete monument adjacent to the well.

Disc Elevation is 25.31' (NAVD88)

Top of Pipe (well M1045) Elevation is 24.45' (NAVD88) based on NGS NAVD88 adjustment of vertical network.

Origin of NAVD88 elevation for BM "M1045" and well "M1045" is closed bench level circuit through NGS benchmarks AJ8864 (F 547) and AJ8886 (E 547)

Well is situated on the Northeast side of State Road 710 (Beeline Highway), South of State Road 76 (Kanner Highway), at the Martin County Line, in Section 30, Township 40 South, Range 40 East, Martin County, Florida

TO REACH the well from the intersection of State Road 76 (Kanner Highway) and State Road 710 (Beeline Highway) in Indiantown, travel Southeast on State Road 710 (Beeline Highway) for 6.05 miles to an "ENTERING MARTIN COUNTY" sign and the well on the left (Northeast). Well is situated 3.5 feet Northwest of and 73.4 feet Northeast of said sign. Well is situated 73.4 feet Northeast of a SFWMD disc stamped "M1045 2005". Well is Southwest of a fence and protrudes 2 feet (more or less) above the ground surface.

Positional\_Accuracy:

Horizontal\_Positional\_Accuracy:

## Horizontal

Horizontal\_Positional\_Accuracy\_Report:

The horizontal position of the well "M1045" was established using differential GPS. NGS points AJ8864 (F 547) and AJ8886 (E 547) were used as a source of horizontal control.

Quantitative\_Horizontal\_Positional\_Accuracy\_Assessment:

Horizontal\_Positional\_Accuracy\_Value: 1 meter

Horizontal\_Positional\_Accuracy\_Explanation: The intended

horizontal positional accuracy for this survey is 1 meter

Vertical\_Positional\_Accuracy:

## Level Line

Vertical\_Positional\_Accuracy\_Report:

A level line was run originating on NGS control point AJ8864 (F 547) with NAVD-88 elevation, running through well "M1045" and disc "M1045" and

M1045.gen

terminated on

point AJ8886 (E 547) in accordance with Florida  
Minimum Technical Standards.

Quantitative\_Vertical\_Positional\_Accuracy\_Assessment:

Vertical\_Positional\_Accuracy\_Value: 0.02 feet

Vertical\_Positional\_Accuracy\_Explanation: A bench level

circuit was performed between AJ8864 (F 547) and AJ8886 (E 547) running through well  
"M1045" in accordance with Florida Minimum Technical Standards (Chapter 61g17-6, FAC).  
Length of benchmark run is 1.50 miles. Allowable error is 0.06 feet. Achieved Accuracy is  
0.02 feet.

Lineage:

Source\_Information:

Source\_Citation:

Citation\_Information:

Series\_Information:

Publication\_Information:

Larger\_Work\_Citation:

Citation\_Information:

Series\_Information:

Publication\_Information:

Source\_Time\_Period\_of\_Content:

Time\_Period\_Information:

Single\_Date/Time:

Range\_of\_Dates/Times:

Multiple\_Dates/Times:

Process\_Step:

Process\_Description:

The horizontal work was performed using Ashtech GPS  
receivers. The vertical work was performed using level

Wild

N-A2

Process\_Date: 20050823

Process\_Time: 09000000

Process\_Contact:

Contact\_Information:

Contact\_Person\_Primary:

Contact\_Organization\_Primary:

Contact\_Address:

Spatial\_Data\_Organization\_Information:

Spatial\_Reference\_Information:

Horizontal\_Coordinate\_System\_Definition:

Geographic:

Planar:

Map\_Projection:

Albers\_Conical\_Equal\_Area:

Azimuthal\_Equidistant:

Equidistant\_Conic:

Equiangular:

General\_Vertically\_Near-sidereal\_Perspective:

Gnomonic:

Lambert\_Azimuthal\_Equal\_Area:

Lambert\_Conformal\_Conic:

Mercator:

Modified\_Stereographic\_for\_Alaska:

Miller\_Cylindrical:

Oblique\_Mercator:

Oblique\_Line\_Point:

Orthographic:

Polar\_Stereographic:

Polyconic:

Robinson:

Sinusoidal:

van\_der\_Grinten:

Space\_Oblique\_Mercator\_(Landsat):

Stereographic:

Transverse\_Mercator:

van\_der\_Grinten:

Grid\_Coordinate\_System:

Universal\_Transverse\_Mercator:

Transverse\_Mercator:

M1045.gen  
 Universal\_Polar\_Stereographic:  
     Polar\_Stereographic:  
 StatePlane\_Coordinate\_System:  
     Lambert\_Conformal\_Conic:  
     Transverse\_Mercator:  
     Oblique\_Mercator:  
         Oblique\_Line\_Point:  
     Polyconic:  
 ARC\_Coordinate\_System:  
     Equi\_rectangular:  
     Azimuthal\_Equidistant:  
 Local\_Planar:  
 Planar\_Coordinate\_Information:  
     Coordinate\_Representation:  
     Distance\_and\_Bearing\_Representation:  
 Local :  
     Geodetic\_Model :  
 Vertical\_Coordinate\_System\_Definition:  
     Altitude\_System\_Definition:  
     Depth\_System\_Definition:  
 Entity\_and\_Attribute\_Information:  
     Detailed\_Description:  
         Entity\_Type:  
         Attribute:  
             Attribute\_Domain\_Values:  
             Attribute\_Value\_Accuracy\_Information:  
     Overview\_Description:  
 Distribution\_Information:  
     Distributor:  
         Contact\_Information:  
             Contact\_Person\_Primary:  
             Contact\_Organization\_Primary:  
             Contact\_Address:  
     Standard\_Order\_Process:  
         Digital\_Form:  
             Digital\_Transfer\_Information:  
             Digital\_Transfer\_Option:  
                 Online\_Option:  
                     Computer\_Contact\_Information:  
                         Network\_Address:  
                         Display\_Instructions:  
             Offline\_Option:  
                 Recording\_Capacity:  
     Available\_Time\_Period:  
         Time\_Period\_Information:  
             Single\_Date/Time:  
             Range\_of\_Dates/Times:  
             Multiple\_Dates/Times:  
 Metadata\_Reference\_Information:  
     Metadata\_Date: 20050823  
     Metadata\_Contact:  
         Contact\_Information:  
             Contact\_Person\_Primary:  
                 Contact\_Person: Mike J. Bartholomew  
                 Contact\_Organization: Biscayne Engineering Company, Inc.  
             Contact\_Organization\_Primary:  
             Contact\_Position: Project Surveyor  
             Contact\_Address:  
                 Address\_Type: mailing and physical address  
                 Address: 529 W. Fidler Street  
                 City: Miami  
                 State\_or\_Province: FL  
                 Postal\_Code: 33130  
                 Country: USA  
             Contact\_Voice\_Telephone: (305) 324-7671  
             Contact\_Facsimile\_Telephone: (305) 324-0809  
             Contact\_Electronic\_Mail\_Address: mi keb@biscayneengineering.com  
             Hours\_of\_Service: 8:00 AM to 5:00 PM EST  
     Metadata\_Standard\_Name: FGDC Content Standards for Digital Geospatial Metadata  
     Metadata\_Standard\_Version: 1.0

Metadata\_Time\_Convention: Local time  
Metadata\_Security\_Information: M1045.gen

# M-1045



**Biscayne Engineering Company, Inc.**  
**Date of Photo: 09-12-05**  
**View: Looking Northwest along SR 710. Well M-1045**  
**near right edge of photo. Benchmark "M1045 2005"**  
**near "Entering Martin County" sign**

# M-1045



**Biscayne Engineering Company, Inc.**  
**Date of Photo: 09-12-05**  
**View: Looking Northeast at well M-1045 from**  
**"Entering Martin County sign"**

# M-1045



**Biscayne Engineering Company, Inc.**  
**Date of Photo: 09-12-05**  
**View: Well M-1045 (with cap on)**



# M-1045



**Biscayne Engineering Company, Inc.**  
**Date of Photo: 09-12-05**  
**View: Well M-1045**

# M-1045



**Biscayne Engineering Company, Inc.**  
**Date of Photo: 09-12-05**  
**View: Benchmark "M1045 2005"**

A. REDERO  
T. LOPEZ  
N. CEFEDA

#03-77478  
S.F.W.M.D  
"SITE-A"

8/3/05

( ESTABLISH  
ELEV. ON WELL  
M1039 )

STA	BS	MEAN	HI	FS	MEAN
BM	9.370 7.410 5.450	7.410	22.440 ✓		
TP#1				1.330 0.720 0.110	0.720
SHAKE	8.170 6.690 5.210	6.690	28.410 ✓		
TP#2				10.790 9.350 7.710	9.350
SHAKE	3.810 5.220 0.710	2.260	21.320 ✓		
TP#3				8.920 7.400 5.850	7.400

ELEV	BM ELEV	DESC
	15.03	NGS # AD 6243 FND DISC STAMPED MAR 10 FLDNR. 78.2' FT W. OF US 1 S.E. LANE 450' FT N. OF COUNTY LINE NAVD 83
21.720 ✓		SET CUT NL
		SET CUT NL
19.060 ✓		SET CUT NL
		SET CUT NL
15.920 ✓		SET CUT NL

SAME  
CREW

#03-77478

S. F. W. M. D

"SITE-A"

8/3/05

(ELEV. CONT.)

STA	BS	MEAN	HI	FS	MEAN	ELEV.	BM ELEV	DESC
SHAKE	5.540 4.685 3.830	4.685	18.605 ✓					SET CUT NL
TP#4				1.960 1.215 0.470	1.215	17.39 ✓		SET 80 D SPIKE
SHAKE	7.270 6.540 5.810	6.540	23.93 ✓					SET 80 D SPIKE
TP#5				5.500 4.060 2.620	4.060	19.87 ✓		SET 80 D SPIKE
SHAKE	5.585 4.640 3.675	4.64	24.51 ✓					SET 80 D SPIKE
TP#6				3.750 2.755 1.760	2.755	21.755 ✓		SET MAG NL IN TREE STUMP

SAME  
CREW

#03-77478  
S.F.W.M.D.  
"SITE-A"

3/3/05

(ELEV. CONT.)

STA	BS	MEAN	HI	FS	MEAN
SHAKE	2.470 2.780 2.490	2.980	24.735		
M1039				2.770 2.555 2.265	2.555
SHAKE	2.350 1.630 0.910	1.630	24.315		
TP # 7				2.555 2.555 2.265	2.555
SHAKE	3.640 2.650 1.660	2.650	24.510		
TP # 8				5.480 7.510 5.280	7.230

ELEV	BM ELEV.	DESC.
		SET MAG NL IN TREE TRUNK
22.685		TOP OF PIPE WELL = M1039
		TOP OF PIPE WELL = M1039
21.760		MAG NL IN TREE TRUNK
		MAG NL IN TREE TRUNK
19.880		SET 80 D SPIKE

SAME  
CREW

#03-77478  
S. F. W. M. D

8/3/05

"SITE - A"

(ELEV. CONT)

STA	BS	MEAN	HI	FS	MEAN	ELEV	BM ELEV	DESC
SHAKE	5.510 4.070 2.630	4.070	23.750	✓				SET 80 D SPIKE
TP # 9				7.280 6.550 5.820	6.550	17.400	✓	SET 80 D SPIKE
SHAKE	2.340 1.650 0.960	1.650	19.050	✓				SET 80 D SPIKE
TP # 10				6.010 5.120 4.730	5.120	13.930	✓	SET CUT NL
SHAKE	7.130 5.710 4.290	5.710	19.640	✓				SET CUT NL
TP # 11				6.060 6.420 4.780	6.420	13.220	✓	SET CUT NL

2548/03

SAME  
CREW

#03-77478  
S.F.W.M.D.

"SITE-A"

8/3/05

(ELEV. CONT)

STA	BS	MEAN	HI	FS	MEAN	ELEV	BM ELEV	DESC
SHAKE	5.950 4.495 3.040	4.495	17.715 ✓					SET CUT NL
TP#12				6.000 4.780 3.560	4.780	12.935 ✓		SET CUT NL
SHAKE	7.160 5.920 4.680	5.920	18.855 ✓					SET CUT NL
TP#13				11.750 10.050 8.350	10.050	8.805 ✓		SET CUT NL
SHAKE	6.590 5.290 3.990	5.290	14.095 ✓					SET CUT NL
TP#14				7.790 5.845 3.900	5.845	8.250 ✓		SET CUT NL

2548/04

SAME  
CREW

#03-77478  
S.F.W.M.D

8/3/05

"SITE - A"

(ELEV. CONT)

STA	BS	MEAN	HI	#S	MEAN
	6.870				
SHAKE	5.360	5.360	13.610	✓	
	3.850				
				5.380	
TP#15				3.430	3.430
				1.480	
	4.330				
SHAKE	2.820	2.820	13.000	✓	
	1.310				
				7.460	
TP#16				5.660	5.660
				3.860	
	6.290				
SHAKE	4.790	4.790	12.130	✓	
	3.270				
				5.150	
TP#17				3.305	3.305
				1.460	

2548/05

BM ELEV	DESC
	SET CUT NL
10.180 ✓	SET CUT NL
	SET CUT NL
7.340 ✓	SET CUT NL
	SET CUT NL
8.825 ✓	SET CUT NL



SAME  
CREW

#03-77478  
S.F.M.M.D.

8/3/05

"SITE-A"

(ELEV. CONT)

STA	BS	MEAN	HI	FS	MEAN	BLEN	BM ELEV	DESC
SHAKE	9.620 8.100 6.600	8.700	16.925	✓				SET CUT NL
TP # 18				12.750 10.560 8.370	10.560	6.365	✓	SET CUT NL
SHAKE	7.550 5.310 3.070	5.310	11.675	✓				SET CUT NL
TP # 19				7.750 5.925 3.900	5.825	5.850	✓	SET CUT NL
SHAKE	7.870 6.355 4.840	6.355	12.205	✓				SET CUT NL
TP # 20				5.870 3.870 1.850	3.870	8.335	✓	SET CUT NL

SAME  
CREW

#03-77478  
S.F.W.M.D.

8/3/05

"SITE-A"

(ELEV CONT)

STA	BS	MEAN	HI	FS	MEAN
SHAKE	7.320 6.385 5.450	6.385	17.720		

BM				6.040 5.460 4.880	5.460
----	--	--	--	-------------------------	-------

BM	3.605 3.425 3.245	3.425	26.110		
----	-------------------------	-------	--------	--	--

DISC M1039				3.920 3.740 3.560	3.74
---------------	--	--	--	-------------------------	------

SHAKE	3.320 3.140 2.960	3.140	25.510		
-------	-------------------------	-------	--------	--	--

BM				3.865 3.755 3.645	3.755
----	--	--	--	-------------------------	-------

2548/07

ELEV	BM ELEV	DESC.
------	------------	-------

SET CUT NIL

↓  
9.260 9.780  
/     /  
ERR = 0.020

NGS # A55245  
END DISC STAMPED  
GCY DOZ 2001  
296 W OF W EDGE OF PAV.  
COUNTY LINE RD NEAR HEAD W  
NAVD 88

22.685 WELL = M1039

22.310 ↓

SET S.F.W.M.D. DISC  
STAMPED M1039 2005

↓  
21.755 21.755 TP #16 MARY NIL IN STUMP  
NO ERROR

SAME  
CREW

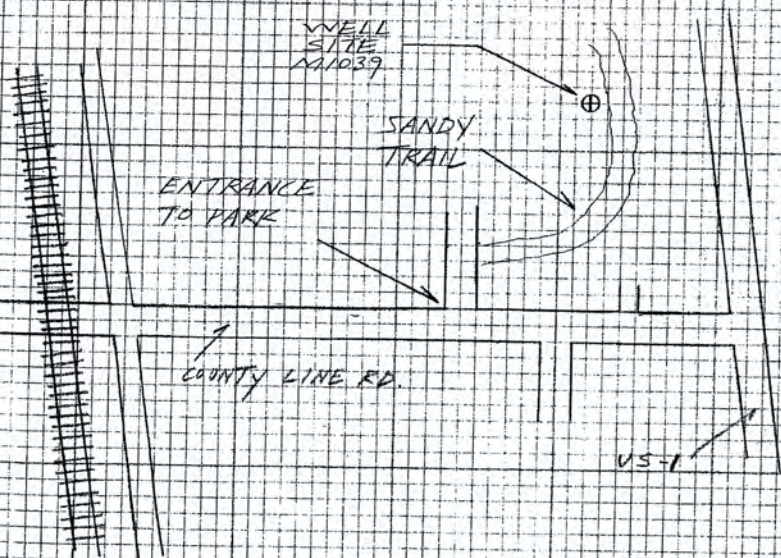
#03-77478  
S.F.W.M.D.

(SITE - A  
DESCRIPTION)

8/3/05

DIRECTIONS -

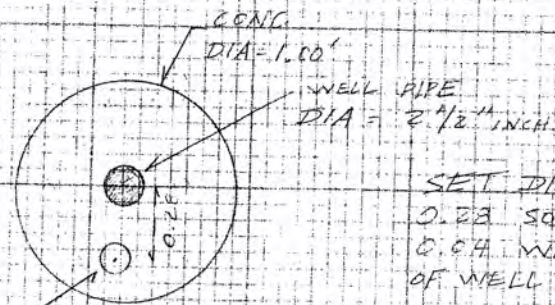
FROM THE INTERSECTION OF  
US-1 AND COUNTY LINE RD.  
TRAVEL WEST ON COUNTY  
LINE RD FOR 0.2 MILES  
TO THE ENTRANCE OF TERVESTA  
PARK TURN NORTH INTO  
PARK AND THEN EAST ONTO A  
SANDY TRAIL THAT CIRCLES  
AROUND FOR 0.2 MILES THE  
WELL IS ON THE LEFT SIDE  
OF THE TRAIL



2548/08

SKETCH OF WELL SITE = M1039

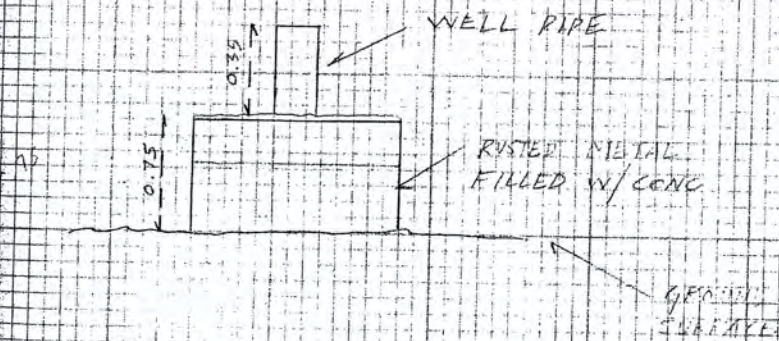
TOP VIEW



SET DISC  
0.23 SOUTH  
0.04 WEST  
OF WELL PIPE

SET  
S.F.W.M.D.  
DISC  
STAMPED  
M1039 2005

SIDE VIEW



SAME  
CREN

#03-77478  
S.F.W.M.D.

8/3/05

"SITE-B"

(ESTABLISH  
ELEV ON WELL  
M1233)

STA	BS	MEAN HI	FS	MEAN
BM	4.675 4.530 4.385	4.530	12.250	✓
M1233			4.975 4.910 4.845	4.910
SHAKE	5.385 5.325 5.265	5.325	12.665	✓
BM			5.095 4.945 4.795	4.945

2548/09

ELEV	BM ELEV	DESC
7.720		NGS # AJ 5644 END DISC STAMPED B 516 2001 52.50' N. OF PROT. $\frac{1}{4}$ OF SE COUNTY LINE RD AND 4' W. OF PROT. W. EDGE OF EAV. OF SE WOODEN BRIDGE L.M.
7.340		TOP OF PIPE NAVD 88 WELL = M1233
		TOP OF PIPE WELL = M1233
7.720	7.720	NGS # AJ 5644 END BRASS D. NAV 88

SAME  
CREW

#03-77473  
S.F.W.M.D.

"SITE-B"

8/3/05

ESTABLISH  
ELEV. ON WELL  
M1230

STA	BS	MEAN	HI	FS	MEAN
BM	4.790 4.640 4.490	4.640	12.360		
M1230				5.010 4.925 4.840	4.925
SHAKE	5.300 5.215 5.130	5.215	12.650		
BM				5.080 4.930 4.780	4.930

2548/10

ELEV	BM ELEV	DESC
7.720		NGS # AJ5644 FND DISC. STAMPED 3516 2001 52.50' N. OF PROJ. $\frac{1}{2}$ OF SE COUNTY LINE RD 4' W. OF PROJ. W. EDGE OF FAV. SE WOOLEN BRIDGE LN TOP OF PIPE NAVD 89 WELL = M1230
7.435		
7.720	7.720	TOP OF PIPE WELL M1230
7.720	7.720	NGS # AJ 5644 FND BRASS D. NAVD 89

SAME  
CREW

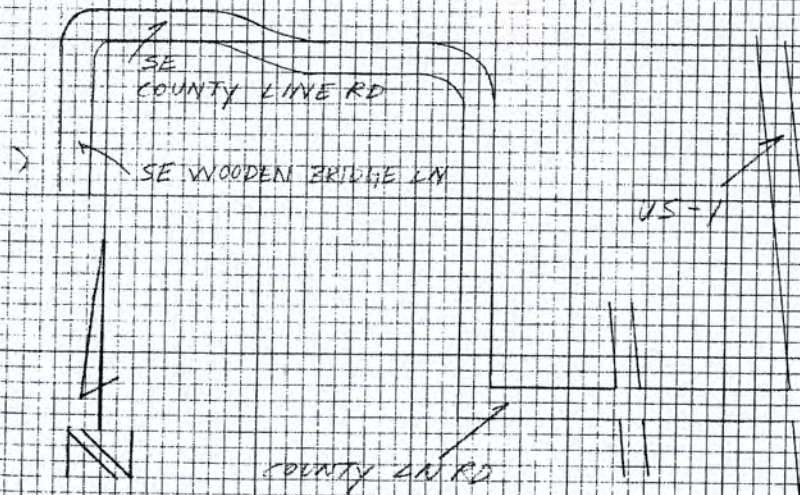
#03-1478  
S.F.W.M.D.

(SITE - B  
DESCRIPTION)

8/3/05

DIRECTIONS - FROM THE INTERSECTION OF US  
AND COUNTY LN RD TRAVEL WEST  
ON COUNTY LN RD FOR 1.3 MILE  
CONTINUE NORTH FOR 0.9 MILE  
AND CONTINUE WEST AGAIN FOR  
0.7 MILES ON SE COUNTY LN RD WHERE  
IT TURNS SOUTH AND BECOMES  
SE WOODEN BRIDGE LN PARK ON SIDE  
OF RD AND WALK NORTH INTO WOODS  
THE WELLS ARE 96' NORTH OF  
PROJECTED  $\phi$  OF SE COUNTY LN RD  
AND ARE ON LINE WITH THE WEST  
EDGE OF PAY. OF SE WOODEN BRIDGE LN.

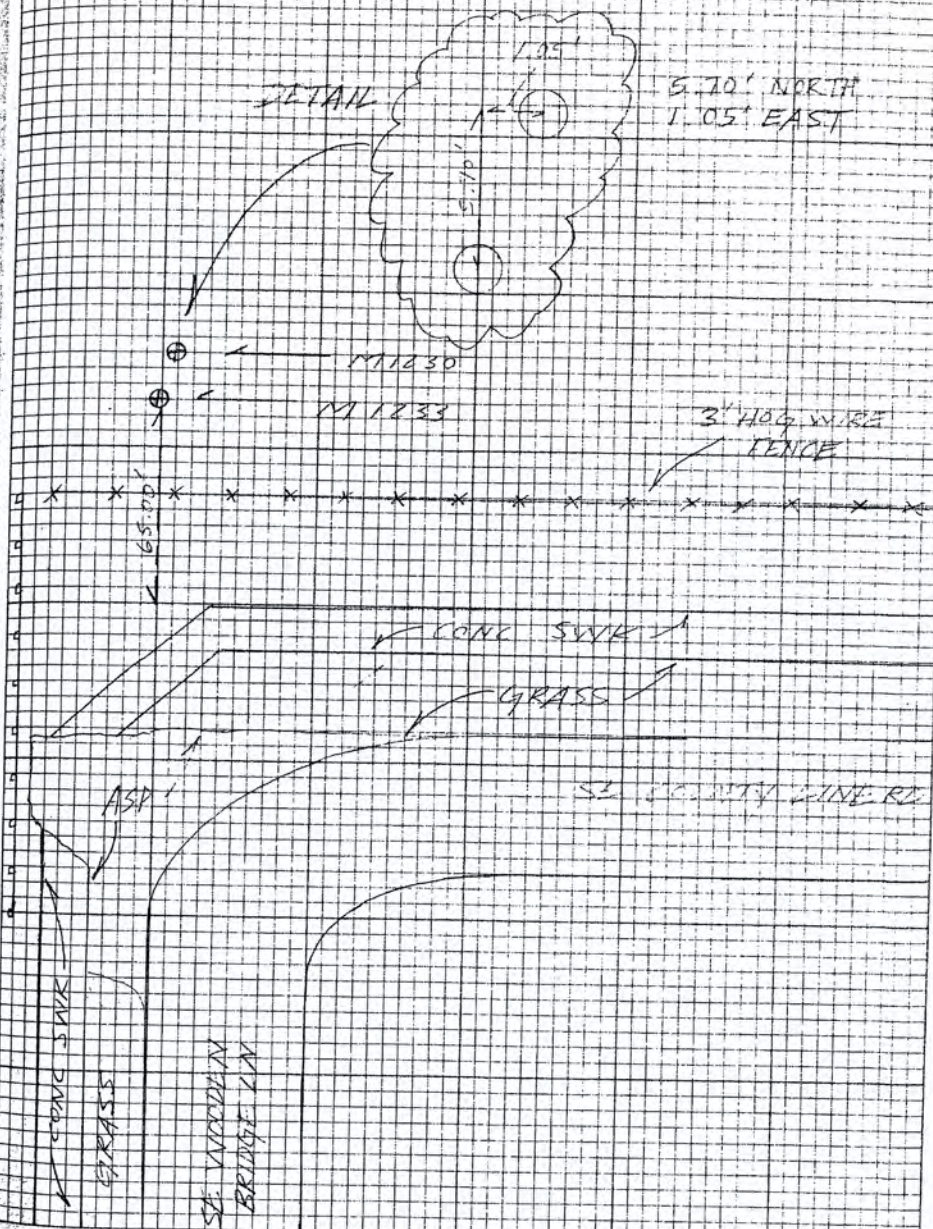
- ⊕ WELL SITE M1230
- ⊕ WELL SITE M1233



2548/11

DETAIL

5.70' NORTH  
1.05' EAST



A. REPERO  
T. LOPEZ  
N. CEPEDA

#03-17478  
S.F.W.M.D  
"SITE - C"

8/4/05

( ESTABLISH  
ELEV. ON WELLS  
M1229, M1232 )

STA	BS	MEAN	HI	FS	MEAN	BM ELEV	BM ELEV	DESC.
BM	5.860 5.050 4.240	5.050	14.310 ✓				9.260 ✓	NGS # AJ 5647 FND DISC STAMPED E. 516.2001 AT THE INTERSECTION OF PINE TREE ST AT MARTIN COUNTY & WEST PALM LINE 13 FT NORTH OF WOOD POWER POLE SET CUT NL NAVD 88
TP#1				6.920 5.245 3.570	5.245		9.065 ✓	SET CUT NL
SHAKE	6.245 4.755 3.265	4.755	13.820 ✓					SET CUT NL
TP#2				5.250 3.869 2.070	3.869		9.960 ✓	SET CUT NL
SHAKE	7.000 5.270 3.540	5.270	15.230 ✓					SET CUT NL
TP#3				8.720 7.010 5.300	7.010		8.220 ✓	SET CUT NL

2543/12

SAME CREW #03-17418 S.F.W.M.D. "SITE-C"

8/4/05

(ELEV CONT)

STA	BS	MEAN	HI	FS	MEAN	ELEV	EM ELEV	DESC
SHAKE	7.000 5.705 4.390	5.705	13.925 ✓					SET CUT NL
TP#4				6.565 5.065 3.565	5.065	8.860 ✓		SET CUT NL
SHAKE	6.900 4.930 2.960	4.930	13.730 ✓					SET CUT NL
TP#5				7.100 5.395 3.690	5.395	8.395 ✓		SET CUT NL
SHAKE	7.000 5.250 3.500	5.250	13.645 ✓					SET CUT NL
TP#6				5.705 3.705 1.705	3.705	7.940 ✓		SET CUT NL



SAME  
CREW

#03-77478  
S.F.W.M.D.

2548/14

8/4/05

"SITE-C"

(ELEV. CONT.)

STA	BS	MEAN	HI	FS	MEAN	ELEV	BM ELEV	DESC
SHAKE	6.610 4.555 2.500	4.555	14.495					SET CUT NL
TP # 7				7.710 5.535 3.280	5.525	8.970		SET CUT NL
SHAKE	7.280 5.175 3.070	5.175	14.145					SET CUT NL
TP # 8				11.880 7.550 7.120	7.550	4.595		SET CUT NL
SHAKE	7.1500 5.195 3.240	5.195	9.790					SET CUT NL
TP # 9				3.930 2.180 0.380	2.180	7.610		SET CUT NL

SAME  
CREW#03 - 77478  
S.F.W.M.D

3/4/05

"SITE-C"

(ELEV. CONT)

STA	BS	MEAN	HI	FS	MEAN	ELEV	BM ELEV	DESC
SHAKE	7.570 6.490 5.410	6.49	14.100					SET CUT NL
TP#10				6.490 5.180 3.870	5.180	8.920		SET CUT NL
SHAKE	5.740 4.705 3.670	4.705	13.625					SET CUT NL
TP #11				5.900 5.000 4.100	5.000	8.625		SET MAG NL & W
SHAKE	4.750 4.300 3.850	4.300	12.925					SET MAG NL & W
M 1232				5.190 4.740 4.290	4.740	8.185		TOP OF PIPE WELL = M1232

SAME  
OPEN

#03-77478  
S.F.W.M.E.

"SITE - C"

2/4/05

(ELEV. CONT)

STA	BS	MEAN	HI	FS	MEAN	ELEV	BM ELEV	DESC
SHAKE	5.380 4.930 4.490	4.930	13.115					TOP OF PIPE WELL 1232
TP #11				5.270 4.850 4.430	4.850	8.265		TOP OF PIPE WELL 1229
SHAKE	4.890 4.450 4.020	4.450	12.715					TOP OF PIPE WELL 1229
TP #12				4.540 4.090 3.640	4.090	8.625		SET MAG NL & W
SHAKE	5.970 5.090 4.210	5.090	13.715					SET MAG NL & W
TP #13				5.850 4.800 3.750	4.800	8.915		SET CUT NL

SAME  
CREW

#03-77478  
S.F.W.M.D.  
SITE - C

8/4/05

(ELEV. CONT.)

STA	ZS	MEAN	HL	FS	MEAN	ELEV	BM ELEV	DESC
SHAKE	6.640 5.335 4.030	5.335	14.350					SET CUT NL
-TP#14				7.730 6.645 5.580	6.645	7.605		SET CUT NL
SHAKE	4.150 2.475 0.800	2.475	10.080					SET CUT NL
-TP#15				7.570 5.470 3.410	5.470	4.590		SET CUT NL
SHAKE	11.450 9.175 6.940	9.175	13.785					SET CUT NL
TP#16				7.000 4.820 2.570	4.820	8.965		SET CUT NL

CAME  
CREV

#03-77478  
S.F. V. M. 2  
"SITE-C"

13/18

8/4/05

(ELEV. SCNT)

STA	BS	MEAN	HI	FS	MEAN	ELEV	BM ELEV	DESC
SHAKE	7.820 5.575 3.330	5.575	14.540					SET CUT NL
TP#17				6.655 4.605 2.555	4.605	9.935		SET CUT NL
SHAKE	6.010 3.790 1.570	3.790	13.725					SET CUT NL
TP#18				6.900 5.330 3.760	5.330	8.575		SET CUT NL
SHAKE	7.370 5.460 3.550	5.460	13.855					SET CUT NL
TP#19				6.700 5.000 2.240	5.000	8.855		SET CUT NL

SAME  
CREW

#03-71473  
S.F.W.M.L.  
"SITE-C"

7/4/05

(ELEV. CONT)

STA	BS	MEAN	HI	FS	MEAN	ELEV	BM ELEV.	DESC
SHAKE	6.820 5.320 5.820	5.360	14.175					SET CUT NL
TP#20				7.280 5.280 4.640	5.960	8.215		SET CUT NL
SHAKE	7.780 6.340 4.900	6.340	14.555					SET CUT NL
TP#21				9.230 6.920 4.610	6.920	7.635		SET CUT NL
SHAKE	7.520 1.325 0.130	1.325	2.760					SET CUT NL
TP#22				7.290 5.495 3.700	5.495	3.465		SET CUT NL

2542/19

SAME  
CREW

#03-77478  
S.F.W.M.D.  
"SITE - C"

8/4/05

(ELEV. CONT.)

STA	BS	MEAN	HI	FS	MEAN	ELEV	BM ELEV	DESC
SHAKE	6.890 5.270 3.650	5.270	8.735	✓				SET CUT NL
TP# 23				6.680 5.150 3.640	5.760	3.575	✓	SET CUT NL
SHAKE	15.580 13.910 12.24	13.91	17.485	✓				SET CUT NL
TP# 24				10.200 7.700 5.200	7.700	9.785	✓	SET CUT NL
SHAKE	7.620 1.680 0.740	1.680	11.465	✓				SET CUT NL
TP# 25				5.840 4.490 3.140	4.490	6.975	✓	SET CUT NL

SAME  
CREW

#03 - 77478  
S.F.W.M.D

"SITE - C"

8/4/05

(ELEV. CONT)

STA	BS	MEAN	HI	FS	MEAN	ELEV	BM ELEV	DESC
SHAKE	9.050 7.300 5.710	7.280	14.355					SET CUT NL
TP #26				7.380 6.190 5.000	6.190	8.165		SET CUT NL
SHAKE	5.810 5.690 5.570	5.690	13.855					SET CUT NL
BM				7.610 7.380 7.160	7.380	6.470	6.450	NGS # AJ 2646 END FLANGE - ENCASED STAINLESS STEEL PIPE STAMPING 3 SIG 7001 INTERSECTION OF COUNTRY CLUB DRIVE AND ISLAND WAY. 13.7 FT N.H. OF THE HYDRANT. MAYD 88

ERR = 0.020



SAMIE  
CREW

#03-77473  
S.F.W.M.D.

" SITE C "

3/4/05

STA	BS	MEAN	FS	MEAN	ELEV	BM ELEV	DESC
-----	----	------	----	------	------	------------	------

BM	5.160	4.930	4.720	13.185		8.265	WELL #11227
	4.680						

DISC		4.930					
11227		4.685	4.695		8.525		
		4.440					

SET S.F. MARKER  
STAMPED 11/25/05

SHAKE	4.720	4.465	4.465	12.745			
	4.765						
	4.210						

BM		4.735					
		4.340	4.340		8.625	6.615	TRAIL 11227 W.
		3.935					

NO ERROR

2542/71

SAME  
CREW

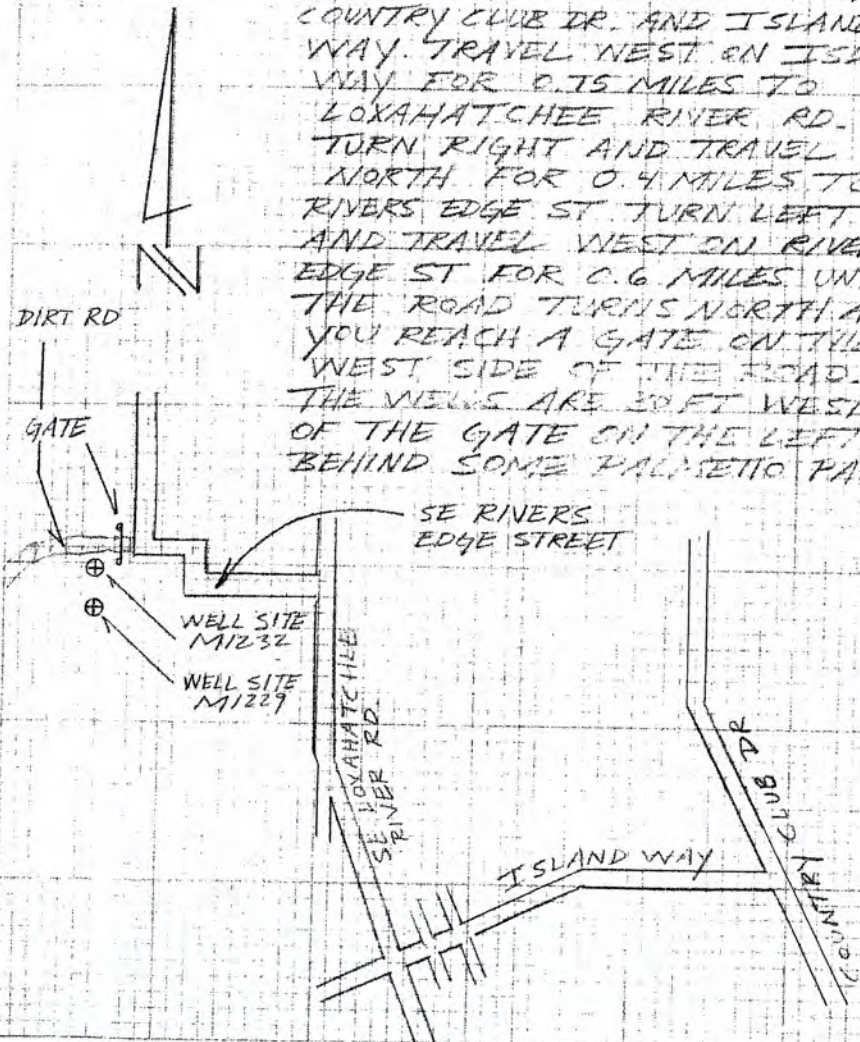
#03-77478  
S.F.W.M.D

8/4/05

(SITE-C  
DESCRIPTION)

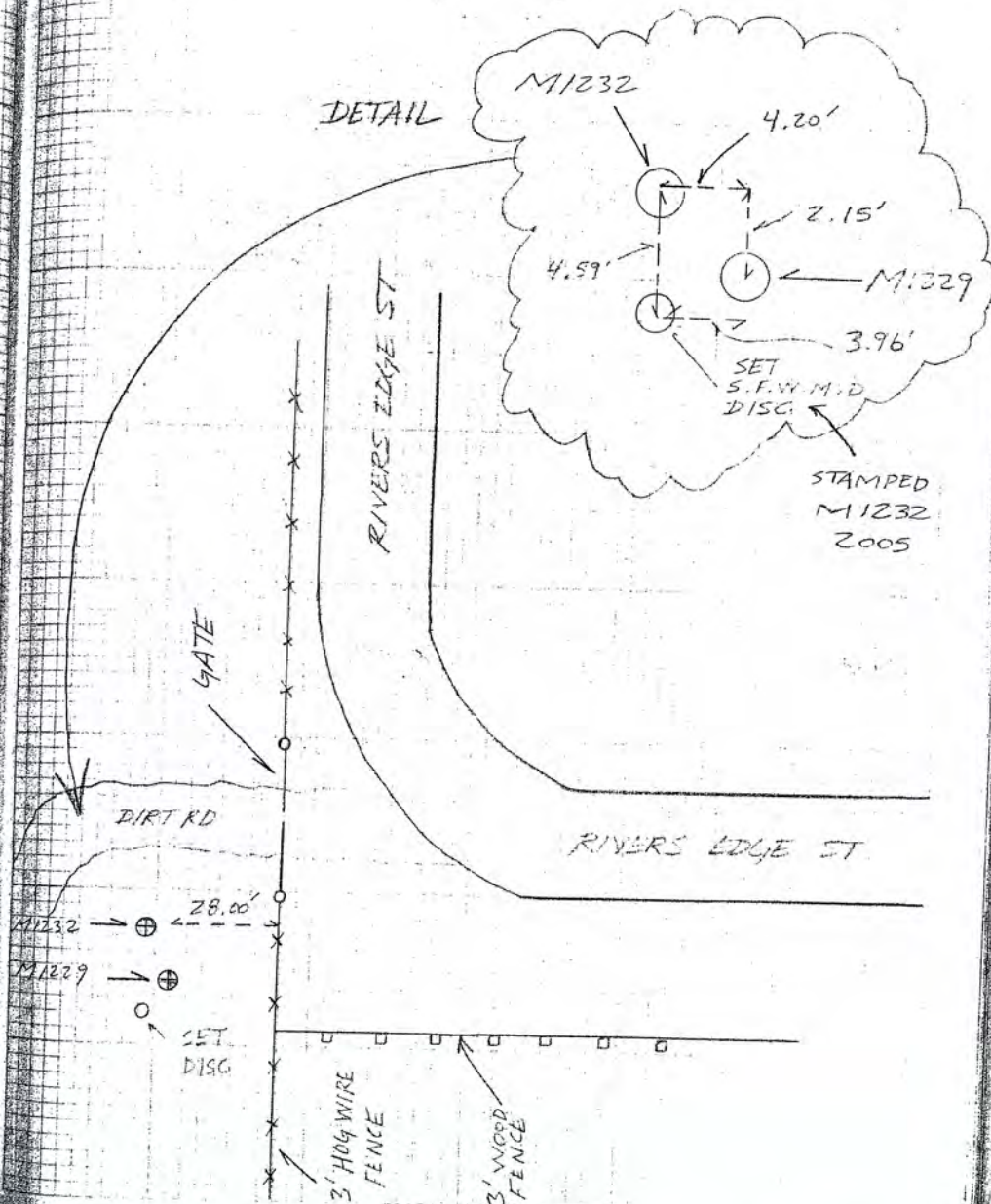
DIRECTIONS -

FROM THE INTERSECTION OF  
COUNTRY CLUB DR. AND ISLAND  
WAY. TRAVEL WEST ON ISLAND  
WAY FOR 0.75 MILES TO  
LOXAHATCHEE RIVER RD.  
TURN RIGHT AND TRAVEL  
NORTH FOR 0.4 MILES TO  
RIVERS EDGE ST. TURN LEFT  
AND TRAVEL WEST ON RIVERS  
EDGE ST FOR 0.6 MILES UNTIL  
THE ROAD TURNS NORTH AND  
YOU REACH A GATE ON THE  
WEST SIDE OF THE ROAD.  
THE WELLS ARE 30 FT WEST  
OF THE GATE ON THE LEFT  
BEHIND SOME PALMETTO PALMS.



2548/23

DETAIL



STAMPED  
M1232  
2005

A. PEDRO  
T. IOPTE  
W. CEBELA

#03-77478  
S. F. W. M. E.

"SITE-D9E"

ESTABLISH  
ELEV. ON WELLS  
M1092; M1044, M. 358

3/2/05

STA	BS	MEAN	HI	FS	MEAN	ELEV	BM ELEV	DESC
	6.570							
BM	5.310	5.310	13.330				7.920	NGS# AF3053 FND LISC STAMPED 0224 1965 0.7 MILES SOUTHEAST FROM AIA AND SOUTHEAST RIVER RD. 20.3' NORTHEAST OF POWER PILE. NAVC 32
	4.050							
M1092				5.930 7.305 6.180	7.305	5.925		16" PIPE WELL = M1092
	7.351							
SHAKE	6.730 5.610	6.730	12.065					TOP OF PIPE WELL = M1092
TP#1				5.290 3.740 2.370	3.740	8.915		SET CUT NL
SHAKE	7.740 6.150 4.560	6.150	15.065					SET CUT NL
TP#2				6.290 4.705 3.520	4.705	10.160		SET CUT NL

SAME  
CREW

#03-77, 173  
S.F.V.M.D

2548/25

3/8/05

" SITE-DIE "  
(ELEV. CONT)

STA	ES	MEAN	HI	ES	MEAN	ELEV.	BM ELEV	DESC
SHAKE	5.540 4.680 3.820	4.680	14.340					SET CUT NL
M1044				6.480 5.740 5.000	5.740	9.100		TOP OF PIPE WELL - M1044
SHAKE	5.480 4.730	5.480	14.580					TOP OF PIPE WELL - M1044
M1058				6.210 5.780 4.930	5.780	8.850		TOP OF PIPE WELL - M1058
SHAKE	7.330 6.470 5.730	6.470	14.950					TOP OF PIPE WELL - M1058
TP#3				7.160 5.400 3.640	5.400	9.450		SET CUT NL

SAME  
CREV

#00.1002  
S.F.W.M.D

3/9/5

"SITE 29B"

(ELEV. CONT)

STA	BS	MEAN	HI	FS	MEAN	ELEV	EM ELEV	DESC
SHAKE	6.750 5.720 5.710	5.730	14.63					SET CUT NL
TP#4				2.570 1.570 2.570	1.550	10.130		SET CUT NL
SHAKE	2.340 2.330 2.270	6.805	16.935					SET CUT NL
TP#5				4.260 2.495 0.730	2.475	14.440		SET CUT NL
SHAKE	7.510 7.470 5.720	7.470	21.910					SET CUT NL
EM				5.220 3.910 2.600	3.910	18.000	18.000	

NO ERROR

NYS # AF7531  
END FLANGE ENCASED STAINLESS  
STEEL ROD  
STAMPING C403 1971  
147.6' NE OF A1A &  
1.3' SE OF POWER POLE

SAME  
CREW

#03-77478  
S.F.W.M.D.

8/2/05

" SITE - E "

(ELEV. CONT.)

STA	BS	MEAN	HI	FS	MEAN	ELEV	BM ELEV.	DESC
BM	6.160 5.295 4.430	5.295	14.395				9.100	WELL = M1044
DISC M1044				6.010 5.135 4.260	5.135	9.260		SET S.F.W.M.D. DISC STAMPED M1044 2005
SHAKE	6.300 5.430 4.560	5.430	14.690					" "
BM				5.260 4.530 3.800	4.530	10.160	10.160	TP # 2 CUT NL No ERROR

SAME  
CPEW

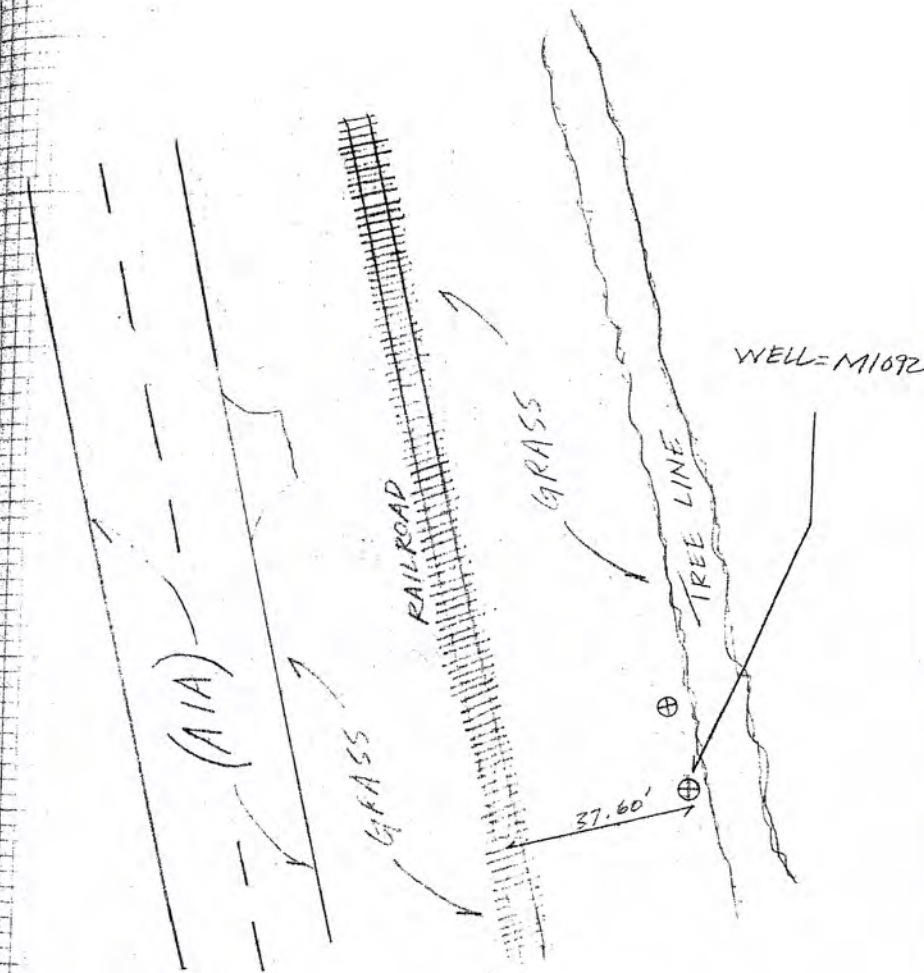
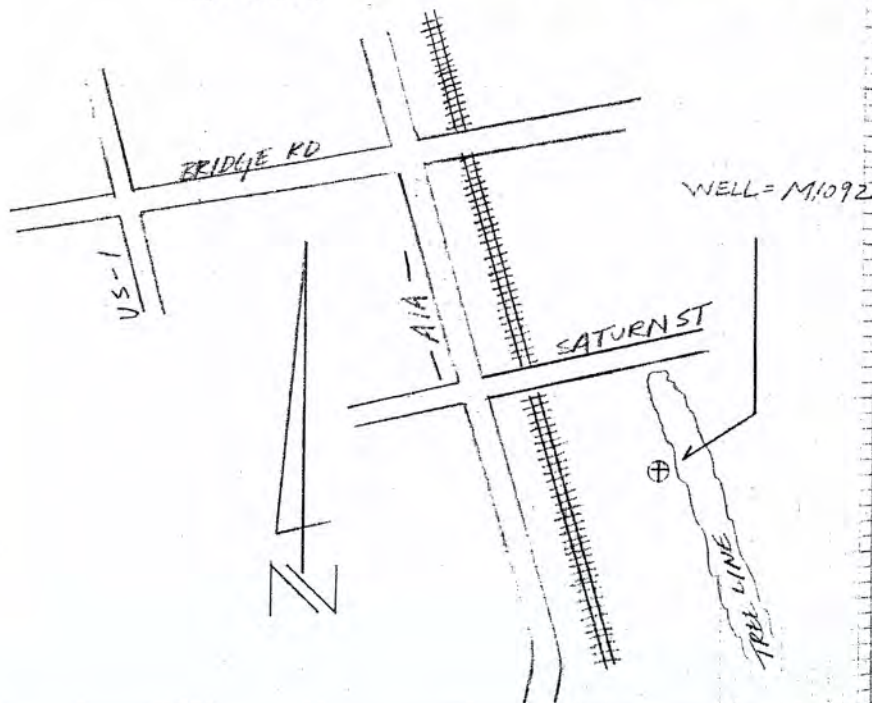
#03-77478  
S.F.W.M.D

2548/28

8/9/05

(SITE-D  
DESCRIPTION)

DIRECTIONS - FROM THE INTERSECTION OF  
BRIDGE RD. AND US-1 TRAVEL  
EAST ON BRIDGE RD. FOR 0.35  
MILES TO AIA. TURN SOUTH ON  
AIA AND TRAVEL FOR 5.7 MILES.  
PARK ON EAST SIDE OF ROAD.  
THE WELL IS 37.60 FT EAST  
OF CENTER OF RAILROAD TRACKS  
AT THE BASE OF TREE LINE  
BORDERING A TWO STORY BROWN  
HOUSE.



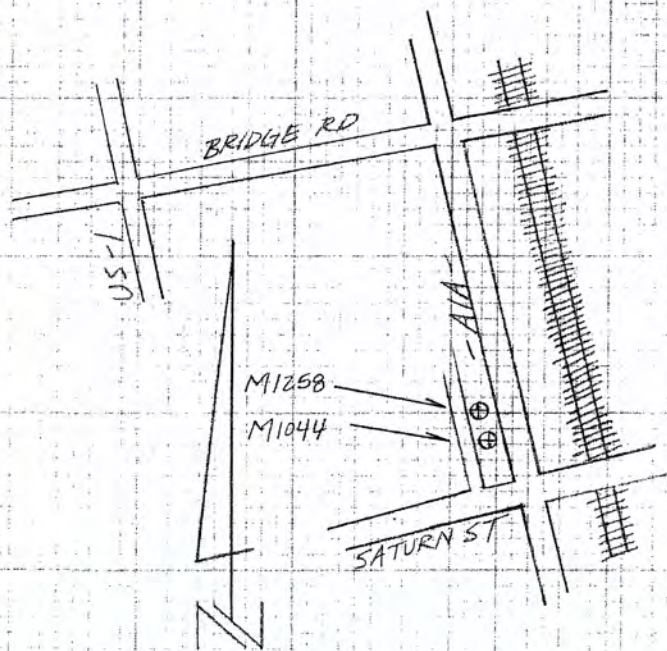
SAME  
CREW

#03-77478  
S.F.W.M.D.

8/8/05

(SITE-E  
DESCRIPTION)

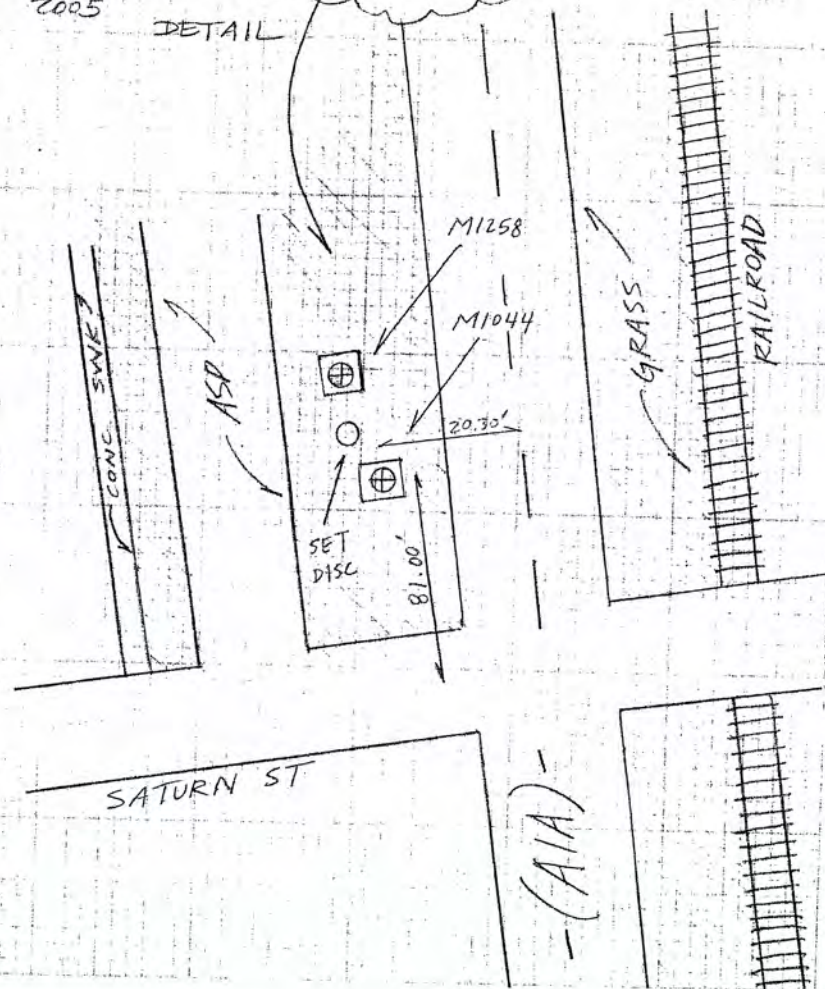
DIRECTIONS - FROM THE INTERSECTION OF  
BRIDGE RD AND US-1 TRAVEL  
EAST ON BRIDGE RD. FOR 0.35  
MILES TO AIA. TURN SOUTH  
AND TRAVEL FOR 0.5 MILES  
TO SATURN ST. WELLS ARE  
JUST NORTH OF SATURN ST.  
ON THE WEST SIDE OF AIA.



2548/29

STAMPED  
M1044  
2005

DETAIL









SAME  
CREW

#03-77478  
S.F.W.M.D.  
"SITE - F"

8/8/05

(ELEV. CONT)

STA	BS	MEAN	HI	FS	MEAN	ELEV	BM ELEV	DESC
BM	4.406 4.080 3.760	4.030	18.485 ✓				14.405	WELL = M1057
DISC M1057				4.390 4.160 3.930	4.160	14.325 ✓		SET S.F.W.M.D. DISC STAMPED = M1057 2005
SHAKE	4.470 4.230 3.990	4.230	18.555 ✓					" "
BM				6.670 6.270 5.870	6.270	12.285 12.285 ✓		TP#2 MAG N.E.W. NO ERROR

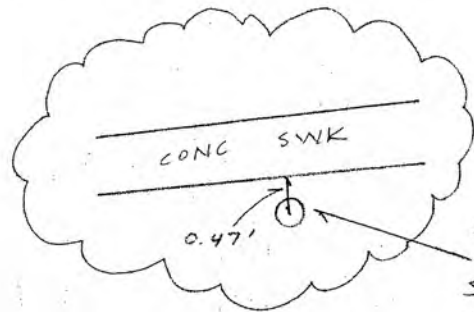
SAME  
CREW

#03-77478  
S.F.W.M.D.

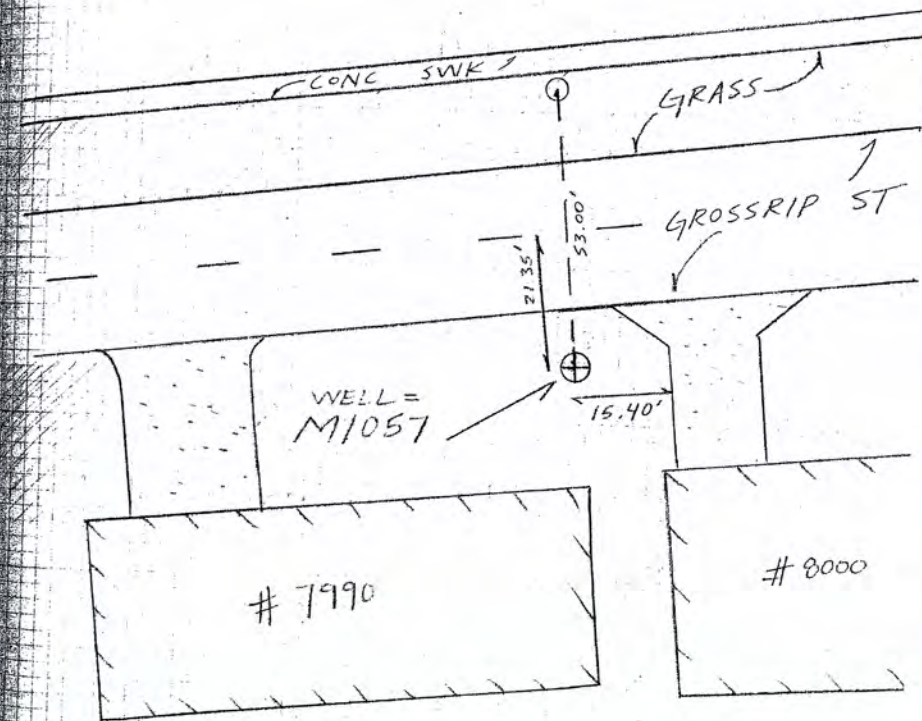
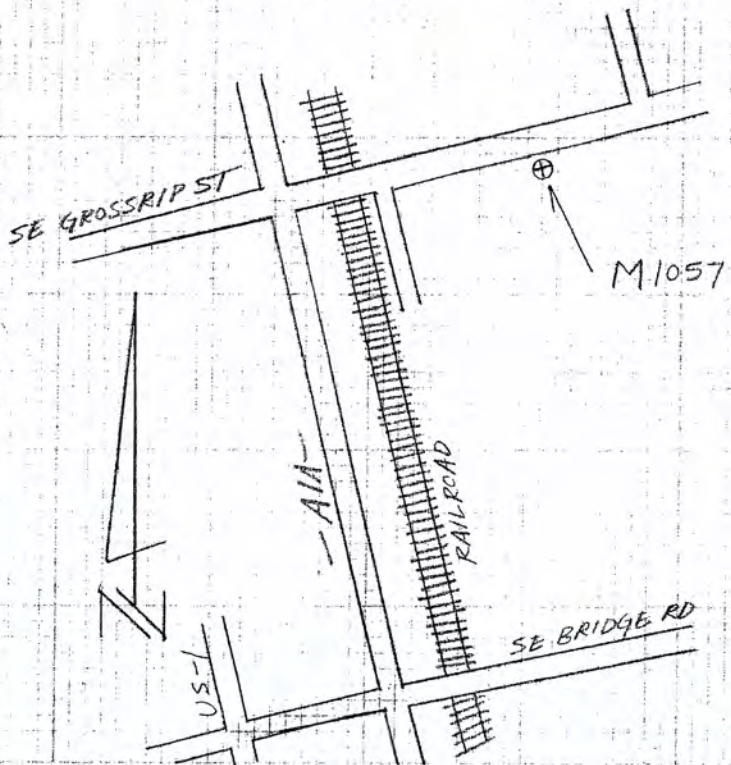
3/8/05

(SITE - F  
DESCRIPTION)

DIRECTIONS - FROM THE INTERSECTION OF US-1 AND  
BRIDGE RD. TRAVEL EAST FOR 0.35M  
TO AIA. TURN LEFT AND TRAVEL  
NORTH ON AIA FOR 2.5 MILES  
TO GROSSRIP ST. AT GROSSRIP  
STREET TURN RIGHT AND  
TRAVEL EAST FOR 0.15 MILES  
THE WELL IS ON SOUTH SIDE  
OF ROAD IN FRONT OF HOUSE  
# 7990.



SET S.F.W.M.D  
DISC  
STAMPED  
M1057 2005

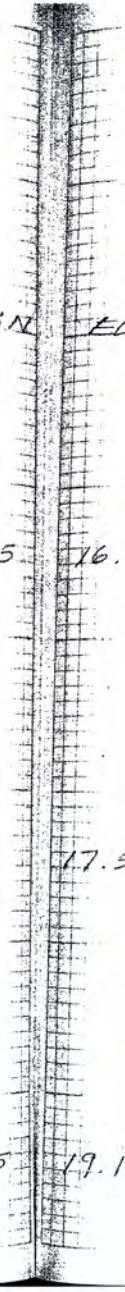


A. REIDERS  
T. LOPEZ  
C. CHESTER

#03-77478  
S.F.W.M.I.  
"SITE - 6"

8/15/05

(ESTABLISH  
ELEV ON WELL=  
141269)



STA	BS	MEAN	HI	FS	MEAN	ELEV	BM	ELEV	DESC
BM	4.160 3.320 2.480	3.320	20.950				17.630		NGS# 135612 FIND DISC SURVEY POINT 2001 250' S. OF TWIN RIVERS MOBILE HOME PARK ENTRANCE 3.9' NORTHWEST OF HOWLER SOLE. NAV. 83
TP #1				5.920 4.635 3.350	4.635	16.315			SET CUT NL
SHAKE	7.320 5.845 4.370	5.845	22.160						SET CUT NL
TP #2				6.010 4.600 3.190	4.600	17.560			SET CUT NL
SHAKE	7.470 5.730 3.990	5.730	23.290						SET CUT NL
TP #3				5.415 4.125 2.835	4.125	19.165			SET CUT NL

SAME  
CRIV.

#03-77478  
S.F.W.M.D.  
"SITE - G"

8/15/05

(ELEV. CONT)

STA	BS	MEAN	HI	FS	MEAN	ELEV	BM ELEV	DESC
SHAKE	6.045 5.745 5.445	5.745	24.910					SET CUT NL
M1269				7.370 6.915 6.460	6.915	17.995		TOP OF PIPE WELL = M1269
SHAKE	7.630 6.440 5.250	6.440	24.435					" "
TP # 4				6.420 4.800 3.130	4.800	19.635		SET CUT NL
SHAKE	6.660 4.890 3.120	4.890	24.525					SET CUT NL
TP # 5				6.900 5.610 4.320	5.610	18.915		SET CUT NL

SAME  
CREW

#03-77478  
S.F.W.M.D.  
"SITE-G"

8/15/05

(ELEV. CONT)

STA	BS	MEAN	HI	FS	MEAN	ELEV	BM ELEV	DESC
SHAKE	5.760 4.180 2.600	4.180	23.095	✓				SET CUT NL
TP#6				6.800 5.290 3.780	5.290	17.805	✓	SET CUT NL
SHAKE	6.390 4.630 2.870	4.630	22.435	✓				SET CUT NL
TP#7				6.800 5.060 3.320	5.060	17.375	✓	SET CUT NL
SHAKE	6.480 4.975 3.470	4.975	22.350	✓				SET CUT NL
TP#8				6.370 4.975 3.620	4.975	17.355	✓	SET CUT NL

540/36

SAME  
CREW

#03-77478  
S.F.W.M.D.

2548/37

8/15/05

"SITE - G"

(ELEV. CONT)

STA	BS	MEAN	HI	FS	MEAN ELEV	BM ELEV	DESC
SHAKE	9.380 8.125 6.870	8.125	25.480 ✓				SET CUT NL

TP# 9				2.450 1.560 0.670	1.560	23.920 ✓	SET CUT NL
-------	--	--	--	-------------------------	-------	----------	------------

SHAKE	4.780 4.520 4.260	4.520	28.440 ✓				SET CUT NL
-------	-------------------------	-------	----------	--	--	--	------------

BM				6.170 5.925 5.680	5.925	22.515 22.480	NGS# AJ 5619 FND DISC STAMPED LS17 200/ 180' NORTHWEST FROM $\phi$ OF OSPREY ST. 11.2' NORTHEAST OF BARBED WIRE FENCE. NAVD 88
----	--	--	--	-------------------------	-------	------------------	---

ERR = 0.035 ✓





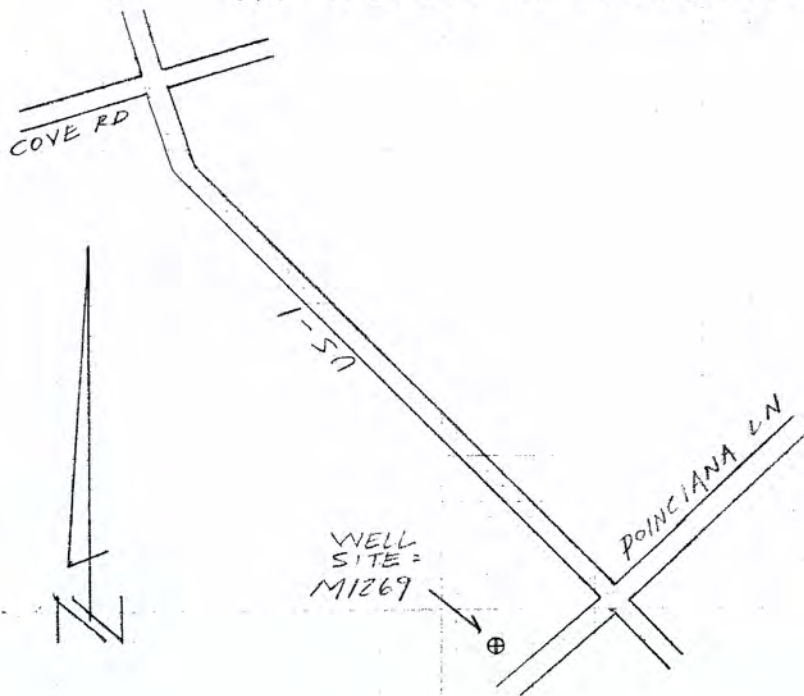
SAME  
CREW

#03-77478  
S.F.W.M.D.

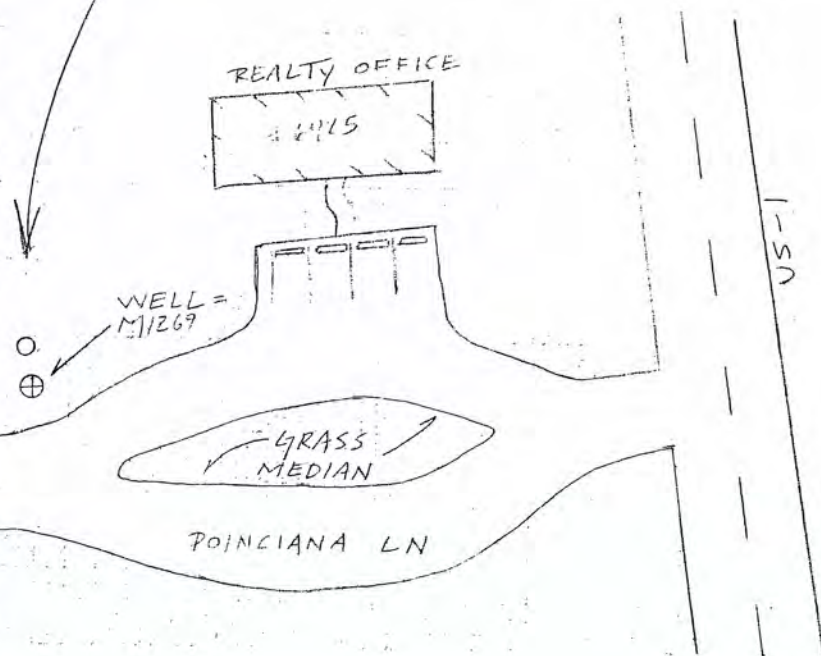
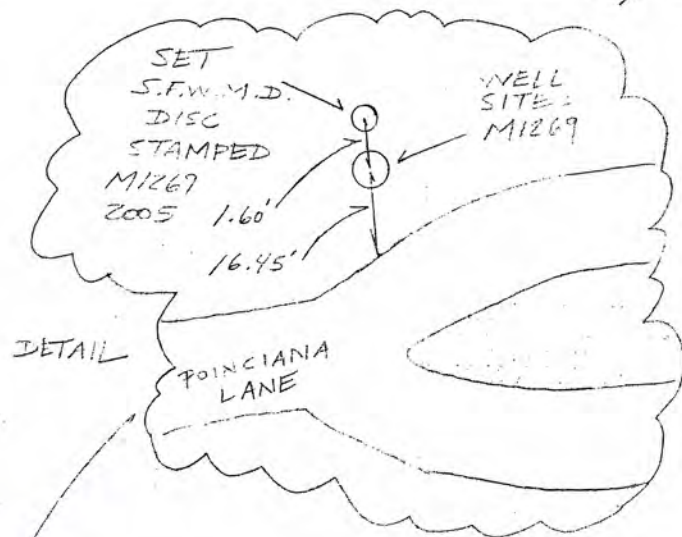
(SITE-G  
DESCRIPTION)

8/15/05

DIRECTIONS - FROM THE INTERSECTION OF  
US-1 AND COVE RD. TRAVEL  
SOUTH ON US-1 FOR 3.1 MILES  
TO POINCIANA LANE. TURN  
RIGHT AND TRAVEL WEST.  
THE WELL IS ON NORTH SIDE  
OF POINCIANA LANE RIGHT  
AFTER YOU PASS REALTY OFFICE  
AT THE END OF MEDIAN STRIP.



2548/39



A. REJERO  
T. LOPEZ  
A. SANTIANA

#03-7747A  
S. F. W. M. D.  
"SITE - H"

5/18/05

ESTABLISHED  
ELEV ON WELLS  
19123E, 19127D

STA	BS	MEAN	HI	FS	MEAN	ELEV	3M ELEV	DESC
BM	4.860 4.320 3.780	4.320	45.75 4.575				✓ 41.430	NGS # AC5315 12" BRASS STAMPED I 95 BY A 31 1/2" DIA. IN PLACE AT N. EDGE OF BRIDGE IN CONC. GUTTER 9.5' NORTH OF THE NW CORNER OF BRIDGE DECK. NAVD 88
TP#1				16.540 16.185 15.930	15.215	29.715	✓	SET 3" DIA BRASS
SHAPE	3.010 2.850 2.690	2.850	32.565	✓				SET 3" DIA BRASS
TP#2				14.630 14.310 13.990	14.310	18.255	✓	SET CUT NL
SHAPE	7.360 5.730 4.550	5.730	24.225	✓				SET CUT NL
TP#3				7.590 5.730 3.870	5.730	18.495	✓	SET CUT NL

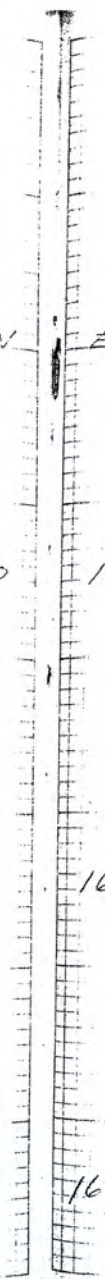
SAME  
CFLV

#03-71775  
S.F.W. M.D.  
"SITE - 11"

8/18/05

(ELEV CUT)

STA	BS	MEAN	HI	FS	MEAN	ELEV	BM ELEV	DESC
SHAKE	7.070 5.475 3.930	5.475	23.970					SET CUT NL
TP#4				7.360 5.750 4.140	5.750	18.220		SET CUT NL
SHAKE	7.300 6.410 5.520	6.410	24.630					SET CUT NL
DISC M1235				8.940 8.490 8.040	8.490	16.140		SET S.F.W. M.D. BRASS D. STAMPED M1235 2005
SHAKE	4.680 4.220 3.760	4.220	20.36					
M1235				3.770 3.975 3.370	3.975	16.785		WELL = M1235



SAME  
CREST

# 3-11-16  
11.1.2.2  
11.1.2.2

3/13/05

(ELEV. CONT)

STA	BS	MEAN	HI	FS	MEAN	ELEV	BM ELEV	SET
SHAKE	3.91 3.91	3.91	20.695					WELL = M1235
M1270				5.23 5.23	5.23	15.165		WELL = M1270
SHAKE	5.240 5.240 5.060	5.240	20.405					WELL = M1270
TP4 S				3.550 3.530 3.510	3.530	17.375		SET CUT NL
SHAKE	7.910 7.390 6.870	7.390	24.765					SET CUT NL
TP4 G				7.390 6.560 5.730	6.560	18.215		SET CUT NL

SAME  
CREW

#03-77478  
S.F.W.M.E.  
"SITE-H"

8/15/05

(ELEV. CONT.)

STA	BS	MEAN	HI	FS	MEAN	ELEV	BM ELEV	DESC
SHAKE	7.260 5.790 4.320	5.790	24.005					SET CUT NL
TP#7				7.250 5.510 3.770	5.510	18.495		SET CUT NL
SHAKE	6.920 5.480 4.040	5.480	23.975					SET CUT NL
TP#8				7.510 5.710 3.910	5.710	18.265		SET CUT NL
SHAKE	13.030 12.745 12.460	12.745	31.010					SET CUT NL
TP#9				1.440 1.290 1.140	1.290	29.720		SET 60 D SPIKE



SAME  
CREW

#03-77478  
S.F.W.M.D.  
"SITE-H"

3/18/05

(ELEV. CONT.)

STA	BS	MEAN	HI	FS	MEAN	ELEV	BM ELEV	DESC
-----	----	------	----	----	------	------	------------	------

	18.210							
SHAKE	17.750	17.750	47.470					
	17.290							

SET 80 D SPIKE

BM

5.705  
5.445  
5.185

5.445

42.025 42.000

ERR = 0.025

NGS # ACS343 FOOT BRASS I.D.  
STAMPED I 95 89 A 24  
IN MEDIAN AT NORTH END OF  
BRIDGE. 4.6' N. OF THE N.  
CONC. GUARDRAIL BETWEEN  
N. AND S. LANES.  
NAVD 88.

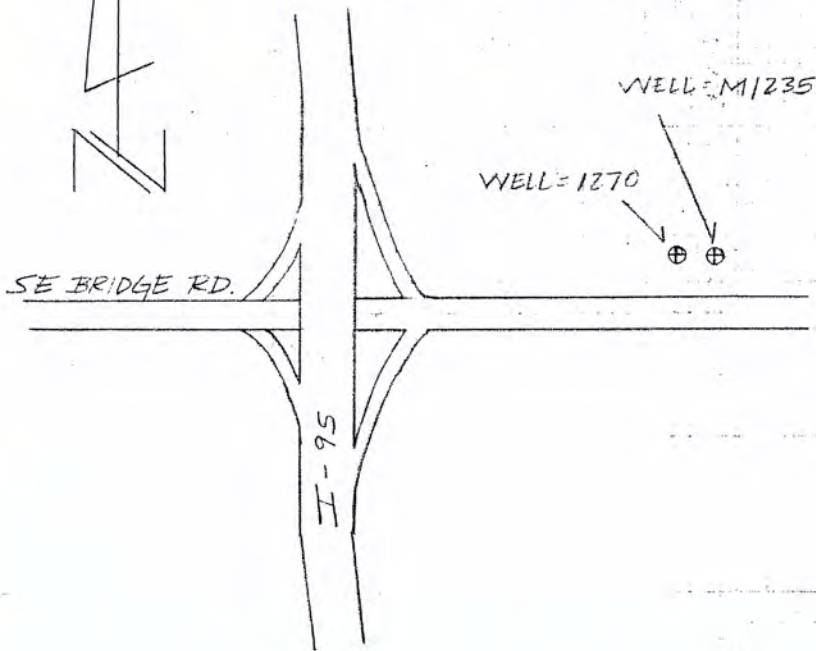
SAME  
CREW

#03-77478  
S.F.W.M.D

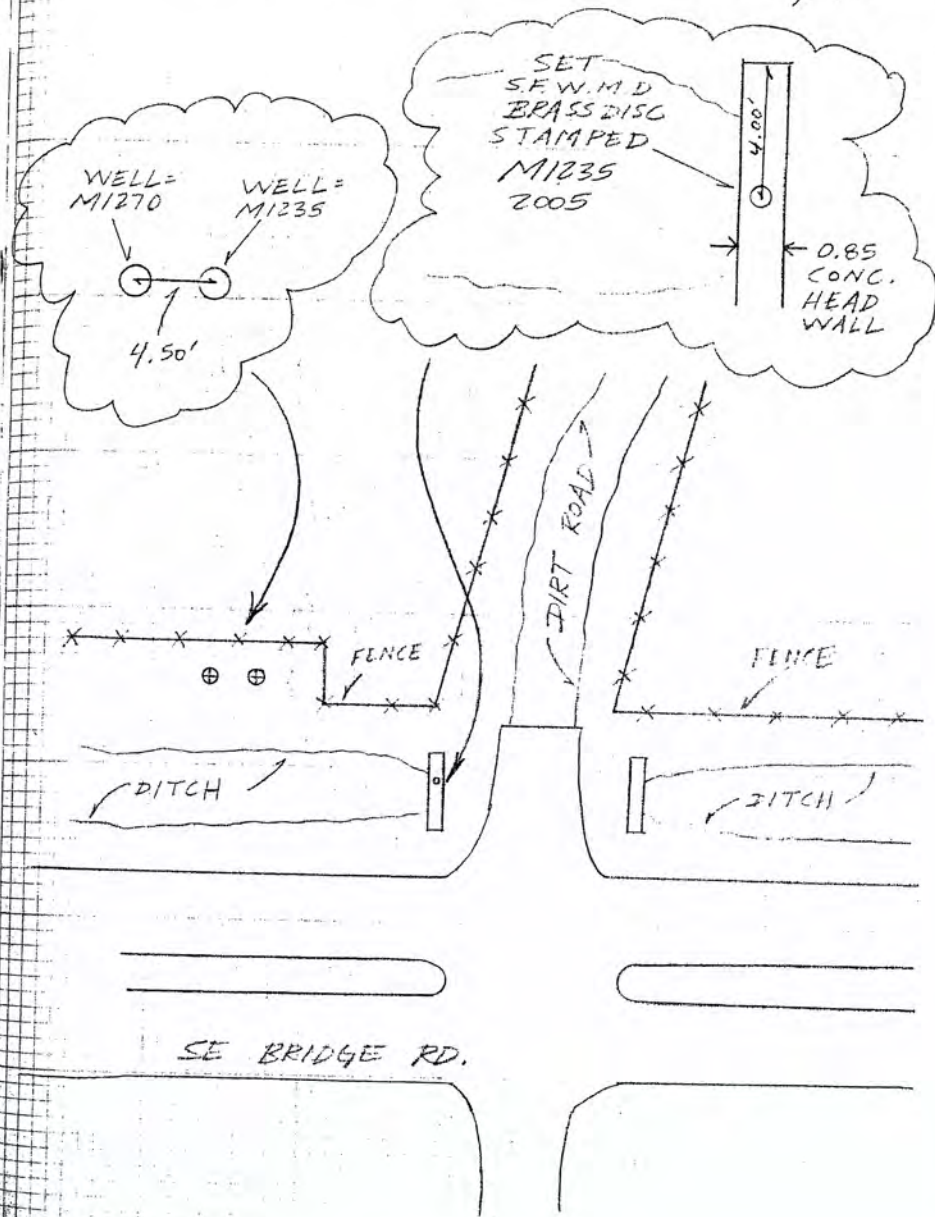
8/18/05

(SITE - H  
DESCRIPTION)

DIRECTIONS - FROM THE INTERSECTION OF  
I-95 AND BRIDGE RD. TRAVEL  
EAST ON BRIDGE RD. FOR 0.3  
MILES. TURN NORTH ON  
DIRT RD AND PARK IN BETWEEN  
DITCH AND FENCE LINE.  
THE WELL IS ON THE NORTH  
SIDE OF THE ACCESS RD. AND  
67' WEST OF DIRT RD.



2548 / 45





A. REBERS  
T. LOPEZ  
A. LOPEZ

#03-111478  
S.F.W.M.S.

"SITE - I"

3/19/05

(ESTABLISH  
ELEV ON WELL =  
M1081)

STA	BS	MEAN	HI	FS	MEAN	ELEV	BM ELEV	DESC
	8.620							
BM	7.140	7.140	32.270				25.130	NGS# AJ8248 FND DISC STAMPED NS22 2001 CERP 48.6 N. OF E OF KANNER RD 37.0 S. OF POWER POLE W/ GUY WIRE ON W. SIDE OF GATE. NAV83
	5.760							
				6.590				
TP# 1				5.035	5.035	27.235		SET CUT NL
				3.480				
	6.150							
SHAKE	5.255	5.255	32.490					SET CUT NL
	4.360							
				5.075				
M1081				4.665	4.665	27.825		WELL M1081
				4.195				
	4.630							
SHAKE	4.250	4.250	32.075					SET CUT NL
	3.350							
				5.730				
TP# 2				4.840	4.840	27.235		SET CUT NL
				3.750				

SAME  
CREW#03-77478  
S.F.W.M.D

8/19/05

"SITE - II"

(ELEV. CONT)

STA	BS	MEAN	HL	FS	MEAN	ELEV	BM ELEV	DESC
SHAKE	7.000 5.250 3.500	5.250	32.485					SET CUT NL
TP# 3				7.060 5.275 3.530	5.295	27.190		SET CUT NL
SHAKE	7.570 5.300 3.230	5.300	32.490					SET CUT NL
TP# 4				7.760 5.560 3.360	5.560	26.930		SET CUT NL
SHAKE	8.200 6.095 3.990	6.095	33.025					SET CUT NL
TP# 5				7.030 4.825 2.620	4.825	28.200		SET CUT NL

SAME  
CREW

#03-77478  
S. F. V. M. D

" SITE - I "

8/19/05

(ELEV. CONT)

STA	BS	MEAN	HI	FS	MEAN	ELEV	BM ELEV	DESC
SHAKE	6.520 4.190 1.860	4.190	32.390 ✓					SET CUT NL
TP# 6				7.450 5.210 2.970	5.210	27.180 ✓		SET CUT NL
SHAKE	7.460 4.720 1.980	4.720	31.900 ✓					SET CUT NL
TP# 7				7.000 4.945 2.890	4.945	26.955 ✓		SET CUT NL
SHAKE	7.170 5.330 3.490	5.330	32.785 ✓					SET CUT NL
TP# 8				7.640 5.370 3.100	5.370	26.915 ✓		SET CUT NL

SAME  
CREW

#03-77478  
S.F.W.M.D.

2543 / 49

8/19/05

"SITE-I"

(ELEV. CONT)

STA	BS	MEAN	HI	FS	MEAN
SHAKE	6.620 4.800 2.980	4.800	31.715	✓	

BM

8.050	
6.810	6.810
5.570	

ELEV.	BM ELEV.	DESC
-------	-------------	------

SET CUT NL

24.905	24.870	NGS # AJ8247 FND FLANGE ENCASED ROD STAMPING M 522 2001 CERP 0.2 MILES WEST OF ENTRANCE TO PAYSON PARK, 120' S. OF C. OF ROAD, 4.0' NORTH OF WOODEN FENCE. NAVL 88
--------	--------	---

ERR = 0.035

A. KLEBER  
A. LOPEZ  
M. MOYA

7/2/05

#03-1715  
S.F. ...  
"SITE II"

(ELEVATION)

STA	BS	INSTR	HI	SP	NEW
M1081	11.005 4.050 2.055		4.050	31.875	
2150 M1081				6.750 6.750 6.480	6.730
SHAKE	6.900 6.570 6.240		6.570	31.715	
TP #1				5.110 4.450 3.850	4.450

ELEV	BM	DESC
27.825		WELL SITE = M1081
25.145		SET S.F. W.M.D. BRASS I. STAMPED M108 2005
27.235	27.235	OUT NL
		No error ✓

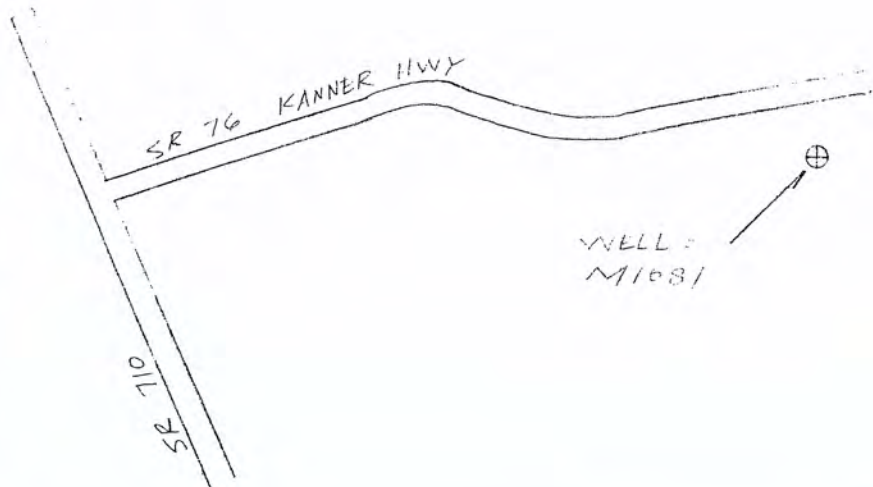
SAME  
CREW

#03-77478  
S.F.W.M.D.

( SITE - II  
DESCRIPTION )

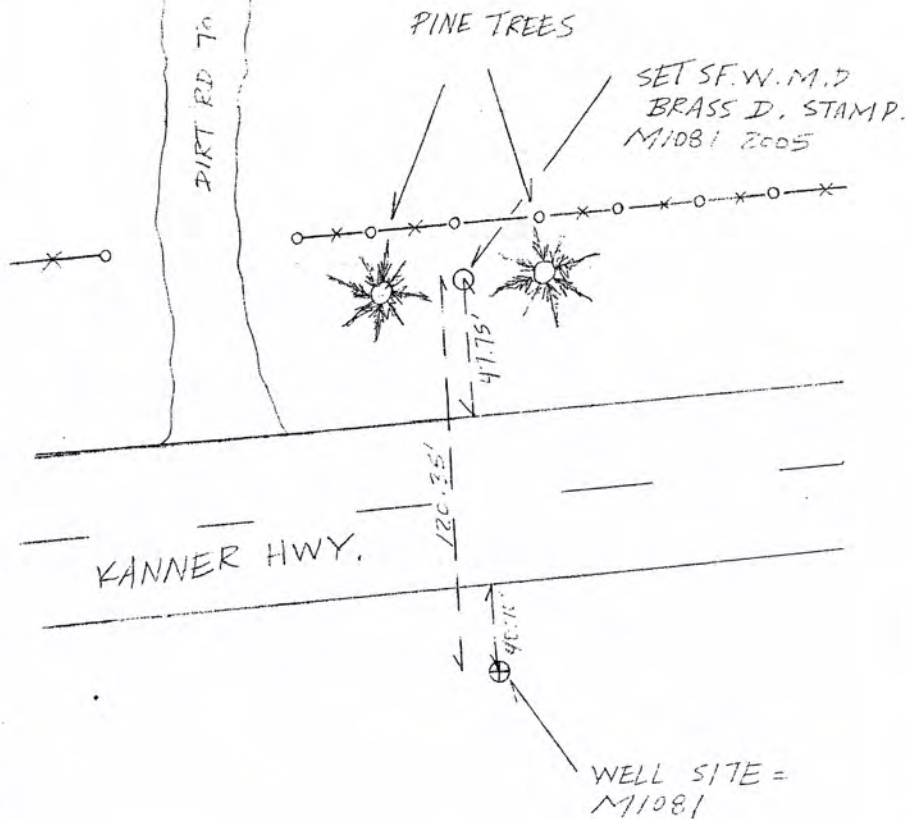
9/2/05

DIRECTIONS - FROM THE INTERSECTION  
OF BEEHIVE HWY (SR 710) AND  
KANNER HWY (SR 76) TRAVEL  
EAST ON KANNER HWY FOR  
5.35 MILES. THE WELL IS TO  
THE RIGHT IN THE SOUTHERN  
ROADSIDE EASEMENT, DIRECTLY  
ACROSS FROM HOUSE # 5625.  
ABOUT 45.7' SOUTH OF EP.



2549/51

5295 # 25001 TO HOUSE # 5625



SAME  
OPEN

#027473  
S.F. W.M.E.  
" SITE - I "

7/2/05

( ESTABLISH  
ELEV. ON WELL  
M1045 )

STA	BS	MEAN	HI	FS	MEAN	ELEV	BM ELEV	DESC
	5.755							
BM1	5.010	5.010	30.740				25.730	N45 # AJ0851 FIND MARK # 547 40 EAST END OF TIE SR TO AND SR TO 30.4' N OF & S 110 17.5' S OF TIE TO TIE MARK 35
	3.270							SET CUT NL
TF#1				5.540	4.090	26.650		
				4.270				
				3.640				
SHAPE	5.970	4.340	30.970					SET CUT NL
	4.340							
	3.760							
TF#2				5.200	4.220	26.630		SET CUT NL
				4.380				
				3.410				
SHAPE	4.510	4.135	30.765					SET CUT NL
	4.135							
	3.760							
M1045				6.710	6.715	24.450		TOP OF PIPE WELL M1045
				5.215				
				5.920				

SAME  
CREW

APPROXIMATE  
ELEVATION

"SITE - J"

3.8105

ELEVATION

STA	BS	MEAN	HI	FS	MEAN
SHAKE	6.971 6.478 6.071	6.476	30.920		

ZM  
ELEV ELEV ZEGG

TOP OF PIPE WELL = 11045

TP # 3				4.665 4.285 3.905	4.285
--------	--	--	--	-------------------------	-------

26.635 ✓

SET CUT NL

SHAKE	6.090 4.535 3.050	4.535	31.170		
-------	-------------------------	-------	--------	--	--

SET CUT NL

TP # 4				5.960 4.530 3.100	4.530
--------	--	--	--	-------------------------	-------

26.645 ✓

SET CUT NL

SHAKE	5.790 4.420 2.850	4.420	31.060		
-------	-------------------------	-------	--------	--	--

SET CUT NL

TP # 5				5.720 4.285 2.850	4.285
--------	--	--	--	-------------------------	-------

26.775 ✓

SET CUT NL



SAME  
CPLV.

#03-TTTR  
S.F.W.M.D.

9/2/05

"SITE-J"

(ELEV. CONT)

STA	BS	MEAN	HI	FS	MEAN	ELEV	BM ELEV	DESC
SHAKE	5.950 4.440 2.930	4.440	31.215					SET CUT NL
TP # 6				5.860 4.340 2.200	4.340	26.875	✓	SET CUT NL
SHAKE	6.130 4.400 2.670	4.400	31.275	✓				SET CUT NL
TP # 7				6.070 4.505 2.940	4.505	26.770	✓	SET CUT NL
SHAKE	6.070 4.370 2.670	4.370	31.140	✓				SET CUT NL
TP # 8				6.320 4.465 2.610	4.465	26.675	✓	SET CUT NL

SAME  
SITE

#03-77473  
S.F.W.M.E

9/2/05

"SITE J"

(ELEV. CONT)

STA	IS	MEAN	HL	FS	MEAN	ELEV	BM ELEV	DESC
SHAKE	6.37 4.45 2.53	4.450	31.125					SET CUT NL
TP# 9				6.200 4.470 2.740	4.470	26.655	✓	SET CUT NL
SHAKE	6.380 4.340 2.300	4.340	30.995					SET CUT NL
TP# 10				6.150 4.560 2.970	4.560	26.435	✓	SET CUT NL
SHAKE	6.190 4.375 2.500	4.395	30.830					SET CUT NL
TP# 11				5.660 4.215 2.770	4.215	26.615	✓	SET CUT NL

SAME  
C.P.E.M.

#03-77478  
S. F. W. M. D.

2548/50

7/3/35

"SITE - J"

(ELEV. CONT)

STA	BS	MEAN	HI	FS	MEAN	LLEV	BM ELEV	DESC
SHAKE	6.570 4.415 2.760	4.415	31.030					SET CUT NL

TP#12				5.120 4.500 3.270	4.500	26.530		SET CUT NL
-------	--	--	--	-------------------------	-------	--------	--	------------

SHAKE	5.736 4.210 2.690	4.210	30.740					SET CUT ALL
-------	-------------------------	-------	--------	--	--	--	--	-------------

BM

	7.140 5.880 4.320	5.880						
--	-------------------------	-------	--	--	--	--	--	--

	24.860	24.880						
ERR	0.020							

NGS# AJ8886 FND FLANGE  
ENCASED FOR STAMP. E 217  
GO EAST FOR 5 MILES FROM  
INTER. OF SR 710 AND SR  
70. POST 11 SE 1/4 OF RD.  
11.4' S. OF WITNESS POST  
NAME EB.

A. FEDER  
T. LOPEZ  
M. MOYA

#03-77478  
S.F.W.M.D

" SITE - J "

9/6/05

(ELEV. CONT.)

STA	BS	MEAN	HI	FS	MEAN	ELEV	BM ELEV	DESC
BM	6.550 6.140 5.730	6.140	30.590 ✓				24.450	TOP OF PIPE = M1045
DISC M1045				5.435 5.230 5.165	5.280	25.305 ✓		SET S.F.W.M.D BRASS IN. STAMPED M1045 3045
SHAKE	5.910 5.735 5.660	5.735	31.070 ✓					" "
BM				4.670 4.460 4.250	4.430	26.630 26.630 ✓		TOP OF SET CUT NL NO ERROR

SAME  
CREW

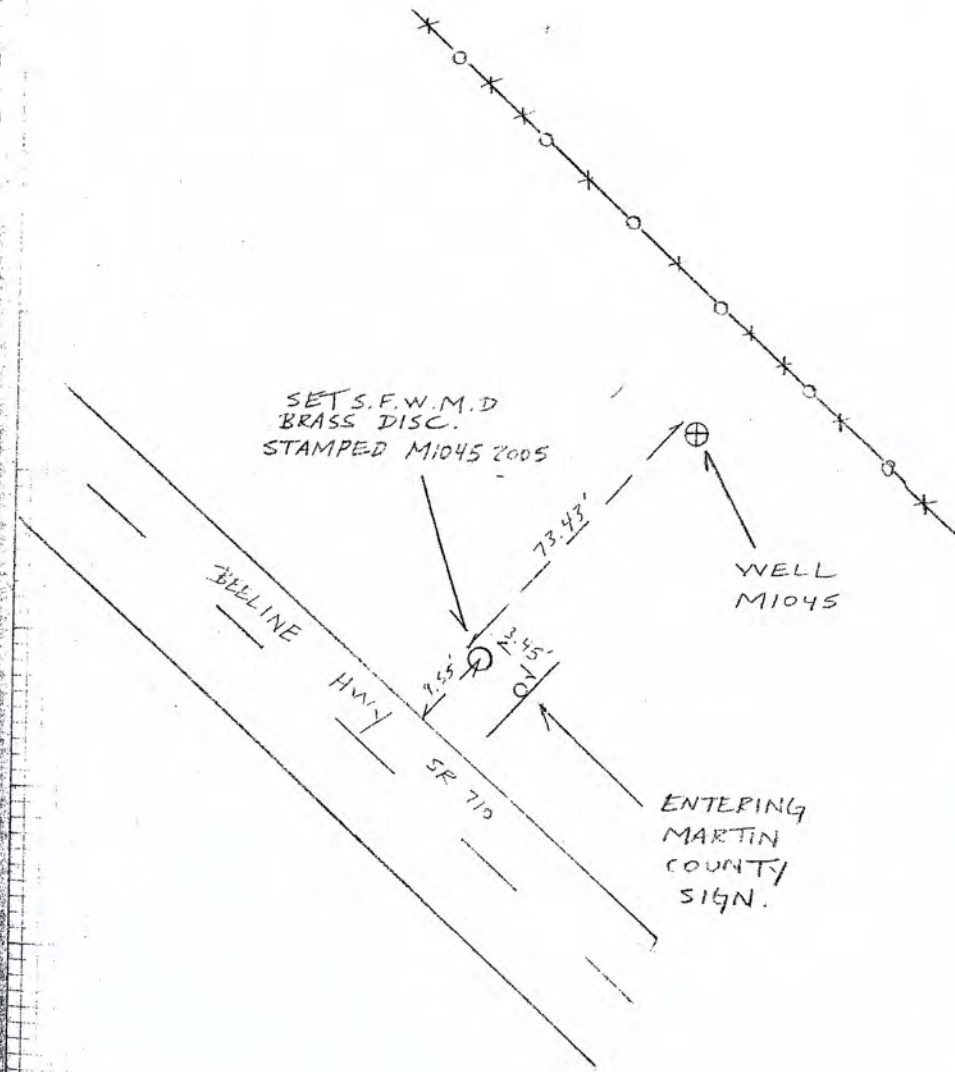
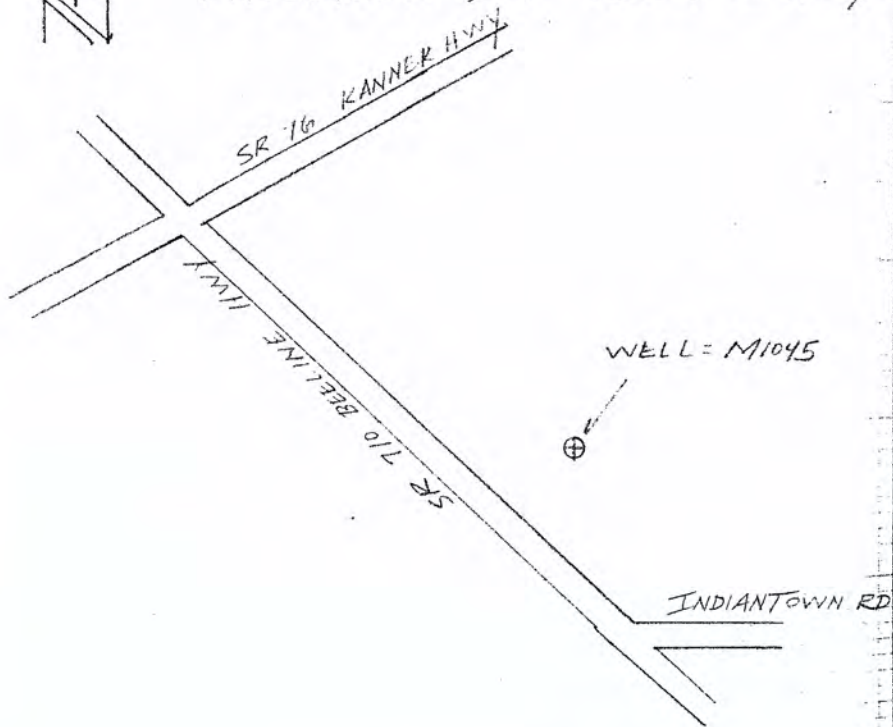
#03-77478  
S.F.W.M.D.

2548 / 58

9/6/05

( SITE - J  
DESCRIPTION )

DIRECTIONS - FROM THE INTERSECTION  
OF BEELINE HWY (SR 710)  
AND KANNER HWY (SR 16),  
TRAVEL SOUTHEAST ON  
BEELINE HWY FOR 6.05 MILES.  
THE WELL IS ON THE LEFT  
BY THE SIGN, ENTERING  
MARTIN COUNTY, 83.00' FT.  
NORTHEAST OF EDGE OF  
PAVEMENT, OF BEELINE HWY.

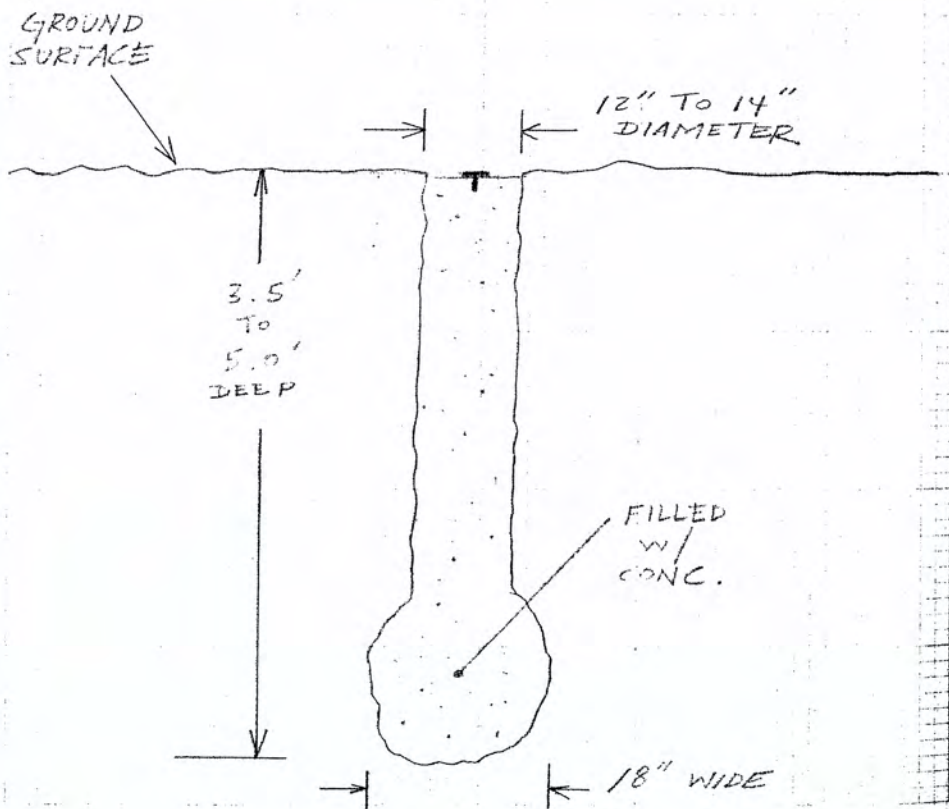


A. REDERO  
T. LOPEZ  
M. MORA

#100-1011F  
S.F. W.M.D.

9/12/05

NOTE: ALL CONCRETE MONUMENTS  
WERE SET ACCORDING TO  
NGS STANDARDS.



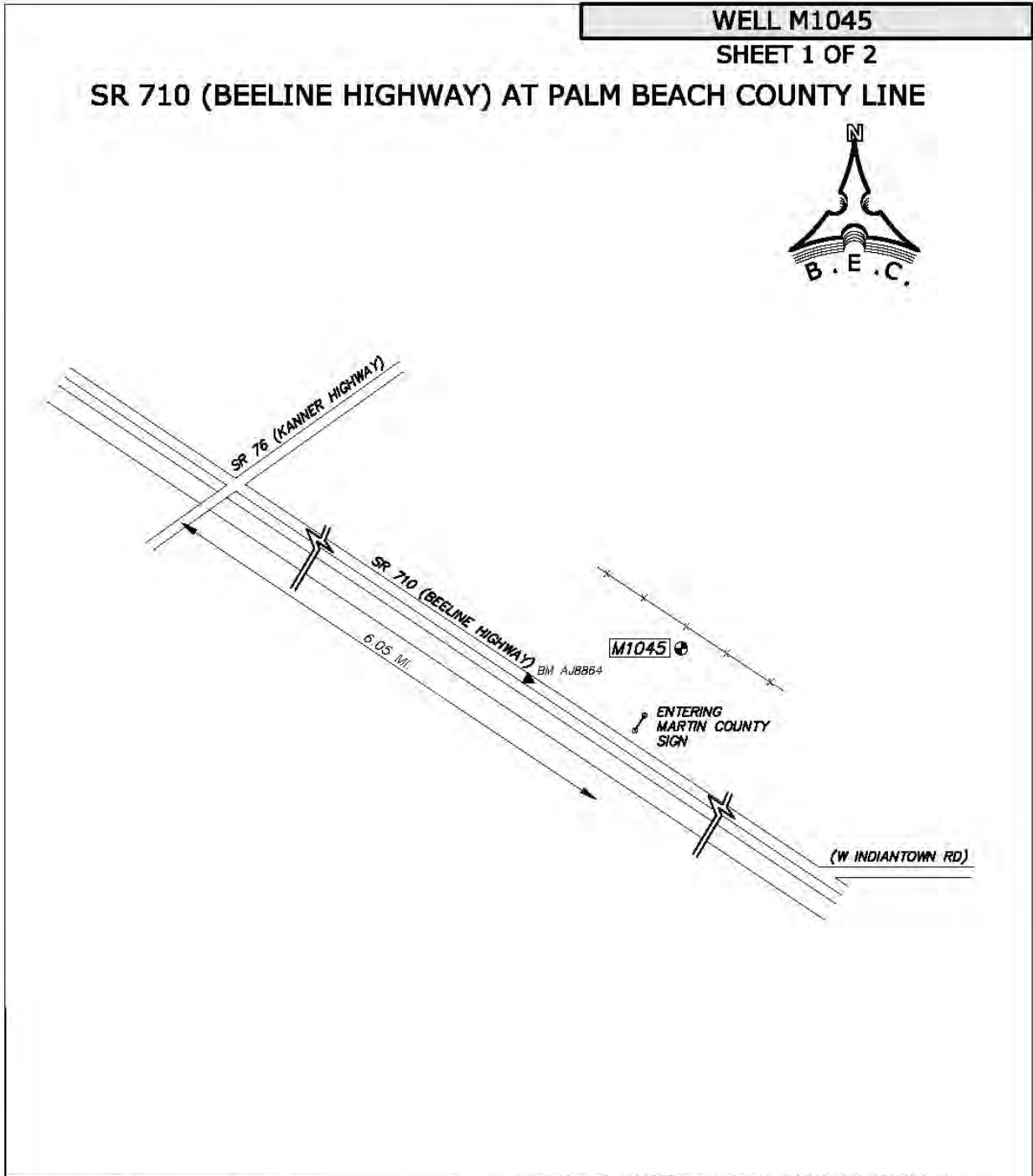


**SOUTH FLORIDA WATER MANAGEMENT DISTRICT**

Rev. 10/10/05

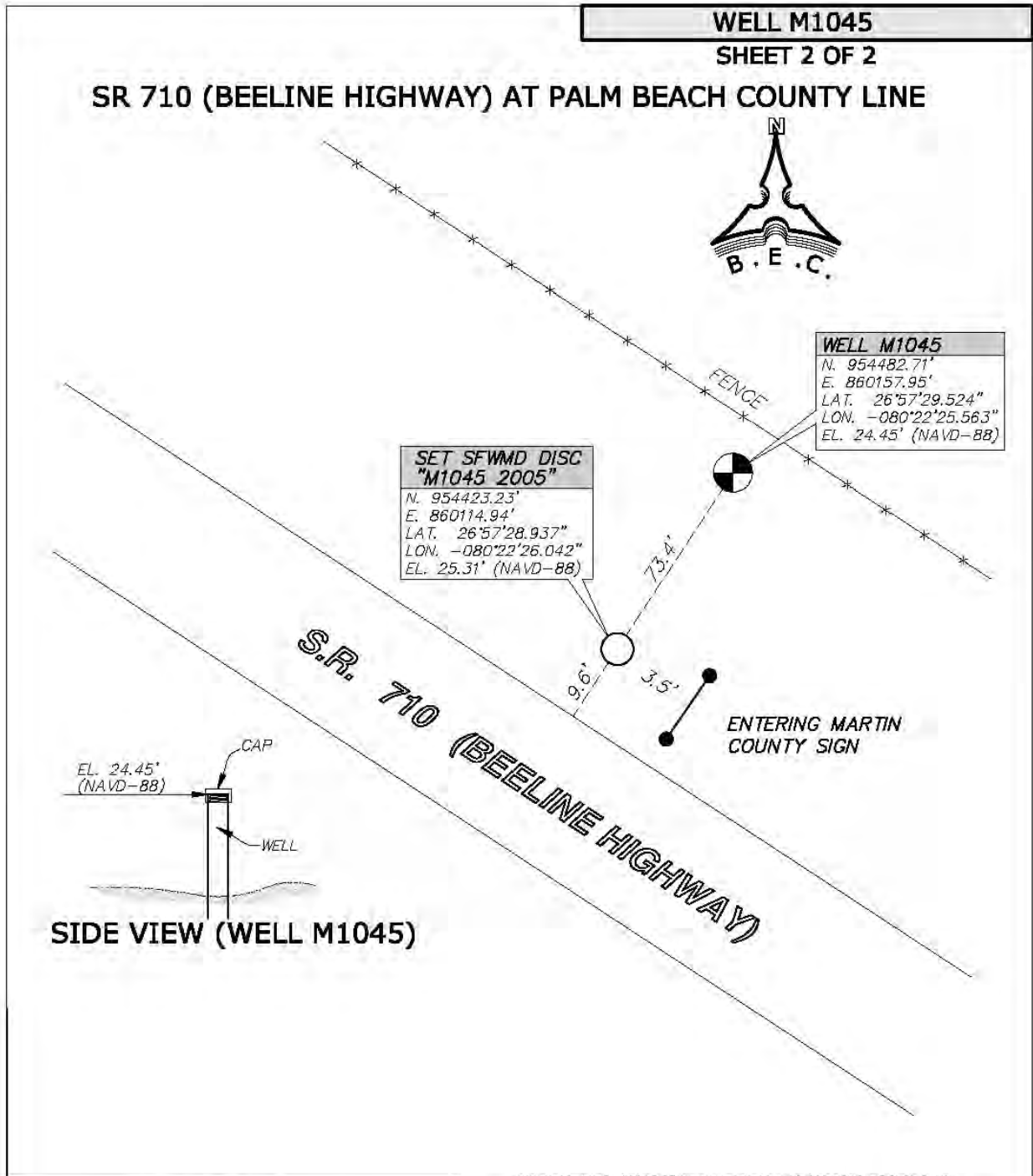
<b>COUNTY</b> <b>MARTIN</b>	<b>PROJECT</b> <b>BEELINE HWY</b>	<b>DESIGNATION</b> <b>M1045 2005</b>	
<b>SECTION</b> <u>30</u>	<b>TOWNSHIP</b> <u>40S</u>	<b>RANGE</b> <u>40E</u>	
<b>GEOGRAPHIC INDEX OF QUAD</b> <u>Florida</u>			
Established by Biscayne Engineering Company, Inc.		<b>NAME OF QUADRANGLE</b> <u>BIG MOUND NORTH</u>	
<b>SURVEYOR</b> <u>Mike J. Bartholomew</u> <b>DATE</b> <u>09 / 26 / 2005</u>		<b>FIELD BOOK</b> <u>2548</u> <b>PAGE</b> <u>52</u>	
<b>HORIZONTAL DATUM:</b> 1927 <input checked="" type="checkbox"/> 1983    Other _____ (circle one) <b>ZONE</b> <u>0901 (EAST)</u>			
<b>VERTICAL DATUM:</b> MSL 1929 <input checked="" type="checkbox"/> 1988    Other _____ (circle one)			
<b>CONTROL ACCURACY:</b> HORIZONTAL   1   2   3 <input checked="" type="checkbox"/> SUB-METER (circle one)    VERTICAL   1   2 <input checked="" type="checkbox"/> 3			
<b>STATE PLANE COORDINATES</b> <u>M1045 (U.S. Survey feet)</u>	<u>X= 860114.94</u>	<u>Y= 954423.23</u>	<b>DISC EL.= 25.31'</b> <b>(NAVD-88)</b>
<b>LATITUDE</b> M1045    26°57'28.937"N		<b>LONGITUDE</b> 080°22'26.042"W	
<b>DESCRIPTION</b>			
<p>Benchmark is situated on the Northeast side of State Road 710 (Beeline Highway), South of State Road 76 (Kanner Highway), at the Martin County Line, in Section 30, Township 40 South, Range 40 East, Martin County, Florida</p> <p>TO REACH the benchmark from the intersection of State Road 76 (Kanner Highway) and State Road 710 (Beeline Highway) in Indiantown, travel Southeast on State Road 710 (Beeline Highway) for 6.05 miles to an "ENTERING MARTIN COUNTY" sign and the benchmark on the left (Northeast). Benchmark is a standard SFWMD disc stamped "M1045 2005" set in concrete, lying 3.5 feet Northwest of said sign.</p>			
<p>Origin of NAVD88 elevation for BM "M1045" is a closed bench level circuit through NGS benchmarks AJ8864 (F 547) and AJ8886 (E 547)</p>			

**SKETCH:** SEE PAGE 2 an 3




<b>WELL M1045</b>		<b>MARTIN COUNTY TAPE DOWN WELLS</b>	
(C:\SURVEY\PROJECTS\177026\177478-CPVMS-MARTIN COUNTY WELLS\DWG\BIS\BISV004.dwg 10/10/2005 3:56:43 PM EDT)			
PREPARED FOR:	FIELD BOOK: 2548	DATE: 10/10/05	ORDER NO.: 03-77478
SOUTH FLORIDA WATER MANAGEMENT DISTRICT		PREPARED BY: <b>BISCAYNE ENGINEERING COMPANY, INC.</b> Consulting Engineers Planners Surveyors 529 WEST FLAGLER STREET, MIAMI, FL 33130 - TEL (305)324-7671 -- FAX (305)324-0809 LB #0129	





SIDE VIEW (WELL M1045)

<b>WELL M1045</b>		<b>MARTIN COUNTY TAPE DOWN WELLS</b>	
PREPARED FOR: <b>SOUTH FLORIDA WATER MANAGEMENT DISTRICT</b>		FIELD BOOK: 2548	DATE: 10/10/05
		ORDER NO.: 03-77478	PREPARED BY: <b>BISCAYNE ENGINEERING COMPANY, INC.</b> Consulting Engineers Planners Surveyors 529 WEST FLAGLER STREET, MIAMI, FL. 33130 — TEL (305)324-7671 — FAX (305)324-0809 LB #0129

From the "ngvd29.txt" file provided by NGS for the CERP Geodetic Vertical Control Project.  
 Line/Part: L26247 SSN+: mark floated, SSN\*: mark constrained, SSN#: mark floated & constrained

Mark ID	SSN	PID	Designation	Geopotential	Elevation	Codes
1864	3459	AJ8864	F 547	8.0929	8.2580	
1865	3458	AJ8886	E 547	7.8355	7.9954	

# The NGS Data Sheet

See file [dsdata.txt](#) for more information about the datasheet.

DATABASE = Sybase ,PROGRAM = datasheet, VERSION = 7.27

1 National Geodetic Survey, Retrieval Date = SEPTEMBER 20, 2005

AJ8864 \*\*\*\*\*

AJ8864 DESIGNATION - F 547

AJ8864 PID - AJ8864

AJ8864 STATE/COUNTY- FL/MARTIN

AJ8864 USGS QUAD - BIG MOUND NORTH (1970)

AJ8864

\*CURRENT SURVEY CONTROL

AJ8864

AJ8864\* NAD 83(1999)- 26 57 36.00729(N) 080 22 36.75657(W) ADJUSTED

AJ8864\* NAVD 88 - 7.843 (meters) 25.73 (feet) ADJUSTED

AJ8864

AJ8864 X - 950,991.099 (meters) COMP

AJ8864 Y - -5,608,830.075 (meters) COMP

AJ8864 Z - 2,874,257.532 (meters) COMP

AJ8864 LAPLACE CORR- -2.04 (seconds) DEFLEC99

AJ8864 ELLIP HEIGHT- -18.72 (meters) (12/12/02) GPS OBS

AJ8864 GEOID HEIGHT- -26.57 (meters) GEOID03

AJ8864 DYNAMIC HT - 7.831 (meters) 25.69 (feet) COMP

AJ8864 MODELED GRAV- 979,100.1 (mgal) NAVD 88

AJ8864

AJ8864 HORZ ORDER - FIRST

AJ8864 VERT ORDER - FIRST CLASS II

AJ8864 ELLP ORDER - THIRD CLASS I

AJ8864

AJ8864.The horizontal coordinates were established by GPS observations

AJ8864.and adjusted by the National Geodetic Survey in December 2002.

AJ8864

AJ8864.The orthometric height was determined by differential leveling

AJ8864.and adjusted by the National Geodetic Survey in May 2002.

AJ8864

AJ8864.The X, Y, and Z were computed from the position and the ellipsoidal ht.

AJ8864

AJ8864.The Laplace correction was computed from DEFLEC99 derived deflections.

AJ8864

AJ8864.The ellipsoidal height was determined by GPS observations

AJ8864.and is referenced to NAD 83.

AJ8864

AJ8864.The geoid height was determined by GEOID03.

AJ8864

AJ8864.The dynamic height is computed by dividing the NAVD 88

AJ8864.geopotential number by the normal gravity value computed on the

AJ8864.Geodetic Reference System of 1980 (GRS 80) ellipsoid at 45

AJ8864.degrees latitude (g = 980.6199 gals.).

AJ8864

AJ8864.The modeled gravity was interpolated from observed gravity values.

AJ8864

AJ8864; North East Units Scale Factor Converg.

AJ8864;SPC FL E - 291,124.934 261,866.973 MT 0.99998841 +0 16 57.0

AJ8864;UTM 17 - 2,982,157.585 561,845.865 MT 0.99964722 +0 16 57.0

AJ8864

AJ8864! - Elev Factor x Scale Factor = Combined Factor

AJ8864!SPC FL E - 1.00000294 x 0.99998841 = 0.99999135  
 AJ8864!UTM 17 - 1.00000294 x 0.99964722 = 0.99965016

AJ8864

AJ8864 SUPERSEDED SURVEY CONTROL

AJ8864

AJ8864 NAVD 88 (12/12/02) 7.84 (m) 25.7 (f) LEVELING 3

AJ8864

AJ8864.Superseded values are not recommended for survey control.

AJ8864.NGS no longer adjusts projects to the NAD 27 or NGVD 29 datums.

AJ8864.[See file dsdata.txt](#) to determine how the superseded data were derived.

AJ8864

AJ8864\_U.S. NATIONAL GRID SPATIAL ADDRESS: 17RNK6184682158(NAD 83)

AJ8864\_MARKER: DD = SURVEY DISK

AJ8864\_SETTING: 7 = SET IN TOP OF CONCRETE MONUMENT

AJ8864\_STAMPING: F 547 2001 CERP

AJ8864\_MARK LOGO: USE

AJ8864\_PROJECTION: RECESSED 12 CENTIMETERS

AJ8864\_MAGNETIC: O = OTHER; SEE DESCRIPTION

AJ8864\_STABILITY: C = MAY HOLD, BUT OF TYPE COMMONLY SUBJECT TO

AJ8864+STABILITY: SURFACE MOTION

AJ8864\_SATELLITE: THE SITE LOCATION WAS REPORTED AS SUITABLE FOR

AJ8864+SATELLITE: SATELLITE OBSERVATIONS - April 18, 2002

AJ8864

AJ8864 HISTORY	- Date	Condition	Report By
AJ8864 HISTORY	- 20011003	MONUMENTED	MOREKL
AJ8864 HISTORY	- 20020418	GOOD	MAPTEC

AJ8864

AJ8864 STATION DESCRIPTION

AJ8864

AJ8864'DESCRIBED BY MORGAN AND EKLUND INC 2001 (MAB)

AJ8864'THE STATION IS LOCATED ABOUT 42.3 KM (26.3 MILES) NORTHEAST OF BELLE

AJ8864'GLADE, ABOUT 28.3 KM

AJ8864'(17.5 MILES) WEST OF JUPITER, ABOUT 12.7 KM (7.9 MILES) SOUTHEAST OF

AJ8864'INDIANTOWN IN SECTION

AJ8864'30, TOWNSHIP 40 SOUTH, RANGE 40 EAST.

AJ8864'

AJ8864'OWNERSHIP MARTIN COUNTY (STATE ROAD 710 RIGHT OF WAY).

AJ8864'

AJ8864'TO REACH THE STATION FROM THE INTERSECTION OF STATE ROAD 76 AND STATE

AJ8864'ROAD 710 ON THE

AJ8864'BRIDGE OVER STATE ROAD 76 AND THE ST. LUCIE CANAL, GO EAST ON STATE

AJ8864'ROAD 710 FOR 9.58 KM

AJ8864'(5.95 MILES) TO THE MARK ON THE LEFT.

AJ8864'

AJ8864'THE MARK IS 7.3 METERS (25.3 FEET) SOUTHWEST OF THE EAST END OF A RIP

AJ8864'RAP HEADWALL, 5.6

AJ8864'METERS (18.5 FEET) SOUTH OF THE WEST END OF A RIP RAP HEADWALL, 6.2

AJ8864'METERS (20.4 FEET)

AJ8864'NORTH OF THE CENTERLINE OF STATE ROAD 710 AND 5.3 METERS (17.5 FEET)

AJ8864'SOUTH OF A CARSONITE

AJ8864'WITNESS POST.

AJ8864'

AJ8864'NOTE A MAGNET WAS PLACED 0.21 METERS (0.7 FEET) SOUTH OF AND 0.1

AJ8864'METERS (0.3 FEET) BELOW

AJ8864'THE MARK.

AJ8864'

AJ8864'

AJ8864

AJ8864 STATION RECOVERY (2002)

AJ8864

AJ8864'RECOVERY NOTE BY MAPTECH INCORPORATED 2002 (CDP)  
AJ8864'THE STATION IS LOCATED ABOUT 42.3 KM (26.3 MILES) NORTHEAST OF BELLE  
AJ8864'GLADE, ABOUT 28.3 KM  
AJ8864'(17.5 MILES) WEST OF JUPITER, ABOUT 12.7 KM (7.9 MILES) SOUTHEAST OF  
AJ8864'INDIANTOWN IN SECTION  
AJ8864'30, TOWNSHIP 40 SOUTH, RANGE 40 EAST.  
AJ8864'  
AJ8864'OWNERSHIP MARTIN COUNTY (STATE ROAD 710 RIGHT OF WAY).  
AJ8864'  
AJ8864'TO REACH THE STATION FROM THE INTERSECTION OF STATE ROAD 76 AND STATE  
AJ8864'ROAD 710 ON THE  
AJ8864'BRIDGE OVER STATE ROAD 76 AND THE ST. LUCIE CANAL, GO EAST ON STATE  
AJ8864'ROAD 710 FOR 9.58 KM  
AJ8864'(5.95 MILES) TO THE MARK ON THE LEFT.  
AJ8864'  
AJ8864'THE MARK IS 7.3 METERS (25.3 FEET) SOUTHWEST OF THE EAST END OF A RIP  
AJ8864'RAP HEADWALL, 5.6  
AJ8864'METERS (18.5 FEET) SOUTH OF THE WEST END OF A RIP RAP HEADWALL, 6.2  
AJ8864'METERS (20.4 FEET)  
AJ8864'NORTH OF THE CENTERLINE OF STATE ROAD 710 AND 5.3 METERS (17.5 FEET)  
AJ8864'SOUTH OF A CARSONITE  
AJ8864'WITNESS POST.  
AJ8864'  
AJ8864'NOTE A MAGNET WAS PLACED 0.21 METERS (0.7 FEET) SOUTH OF AND 0.1  
AJ8864'METERS (0.3 FEET) BELOW  
AJ8864'THE MARK.  
AJ8864'  
AJ8864'STATION RECOVERY (2002)  
AJ8864'RECOVERY NOTE BY MAPTECH, INCORPORATED 2002 (CDP)  
AJ8864'RECOVERED AS DESCRIBED.  
AJ8864'  
AJ8864'

\*\*\* retrieval complete.  
Elapsed Time = 00:00:00

From the "ngvd29.txt" file provided by NGS for the CERP Geodetic Vertical Control Project.  
 Line/Part: L26247 SSN+: mark floated, SSN\*: mark constrained, SSN#: mark floated & constrained

Mark ID	SSN	PID	Designation	Geopotential	Elevation	Codes
1864	3459	AJ8864	F 547	8.0929	8.2580	
1865	3458	AJ8886	E 547	7.8355	7.9954	

# The NGS Data Sheet

See file [dsdata.txt](#) for more information about the datasheet.

DATABASE = Sybase ,PROGRAM = datasheet, VERSION = 7.27

1 National Geodetic Survey, Retrieval Date = SEPTEMBER 20, 2005

AJ8886 \*\*\*\*\*

AJ8886 DESIGNATION - E 547

AJ8886 PID - AJ8886

AJ8886 STATE/COUNTY- FL/MARTIN

AJ8886 USGS QUAD - BIG MOUND NORTH (1970)

AJ8886

\*CURRENT SURVEY CONTROL

AJ8886

AJ8886\* NAD 83(1999)- 26 58 07.46055(N) 080 23 23.96165(W) ADJUSTED

AJ8886\* NAVD 88 - 7.583 (meters) 24.88 (feet) ADJUSTED

AJ8886

AJ8886 X - 949,634.130 (meters) COMP

AJ8886 Y - -5,608,614.501 (meters) COMP

AJ8886 Z - 2,875,120.239 (meters) COMP

AJ8886 LAPLACE CORR- -1.98 (seconds) DEFLEC99

AJ8886 ELLIP HEIGHT- -19.02 (meters) (12/12/02) GPS OBS

AJ8886 GEOID HEIGHT- -26.59 (meters) GEOID03

AJ8886 DYNAMIC HT - 7.571 (meters) 24.84 (feet) COMP

AJ8886 MODELED GRAV- 979,098.8 (mgal) NAVD 88

AJ8886

AJ8886 HORZ ORDER - FIRST

AJ8886 VERT ORDER - FIRST CLASS II

AJ8886 ELLP ORDER - THIRD CLASS I

AJ8886

AJ8886.The horizontal coordinates were established by GPS observations

AJ8886.and adjusted by the National Geodetic Survey in December 2002.

AJ8886

AJ8886.The orthometric height was determined by differential leveling

AJ8886.and adjusted by the National Geodetic Survey in May 2002.

AJ8886

AJ8886.The X, Y, and Z were computed from the position and the ellipsoidal ht.

AJ8886

AJ8886.The Laplace correction was computed from DEFLEC99 derived deflections.

AJ8886

AJ8886.The ellipsoidal height was determined by GPS observations

AJ8886.and is referenced to NAD 83.

AJ8886

AJ8886.The geoid height was determined by GEOID03.

AJ8886

AJ8886.The dynamic height is computed by dividing the NAVD 88

AJ8886.geopotential number by the normal gravity value computed on the

AJ8886.Geodetic Reference System of 1980 (GRS 80) ellipsoid at 45

AJ8886.degrees latitude (g = 980.6199 gals.).

AJ8886

AJ8886.The modeled gravity was interpolated from observed gravity values.

AJ8886

AJ8886; North East Units Scale Factor Converg.

AJ8886;SPC FL E - 292,086.645 260,560.390 MT 0.99998644 +0 16 35.9

AJ8886;UTM 17 - 2,983,118.968 560,539.727 MT 0.99964524 +0 16 35.9

AJ8886

AJ8886! - Elev Factor x Scale Factor = Combined Factor

AJ8886!SPC FL E - 1.00000299 x 0.99998644 = 0.99998943  
 AJ8886!UTM 17 - 1.00000299 x 0.99964524 = 0.99964823

AJ8886

AJ8886 SUPERSEDED SURVEY CONTROL

AJ8886

AJ8886 NAVD 88 (12/12/02) 7.58 (m) 24.9 (f) LEVELING 3

AJ8886

AJ8886.Superseded values are not recommended for survey control.

AJ8886.NGS no longer adjusts projects to the NAD 27 or NGVD 29 datums.

AJ8886.[See file dsdata.txt](#) to determine how the superseded data were derived.

AJ8886

AJ8886\_U.S. NATIONAL GRID SPATIAL ADDRESS: 17RNK6054083119(NAD 83)

AJ8886\_MARKER: F = FLANGE-ENCASED ROD

AJ8886\_SETTING: 49 = STAINLESS STEEL ROD W/O SLEEVE (10 FT.+)

AJ8886\_STAMPING: E 547 CERP 2001

AJ8886\_MARK LOGO: NONE

AJ8886\_PROJECTION: RECESSED 10 CENTIMETERS

AJ8886\_MAGNETIC: O = OTHER; SEE DESCRIPTION

AJ8886\_STABILITY: B = PROBABLY HOLD POSITION/ELEVATION WELL

AJ8886\_SATELLITE: THE SITE LOCATION WAS REPORTED AS SUITABLE FOR

AJ8886+SATELLITE: SATELLITE OBSERVATIONS - April 18, 2002

AJ8886\_ROD/PIPE-DEPTH: 24.4 meters

AJ8886

AJ8886 HISTORY	- Date	Condition	Report By
AJ8886 HISTORY	- 20011003	MONUMENTED	MOREKL
AJ8886 HISTORY	- 20020418	GOOD	MAPTEC

AJ8886

AJ8886 STATION DESCRIPTION

AJ8886

AJ8886'DESCRIBED BY MORGAN AND EKLUND INC 2001 (MAB)

AJ8886'THE STATION IS LOCATED ABOUT 40.1 KM (26.2 MILES) NORTHEAST OF BELLE

AJ8886'GLADE, ABOUT 29.5 KM

AJ8886'(18.4 MILES) WEST NORTHWEST OF JUPITER, ABOUT 11.0 KM (6.9 MILES)

AJ8886'SOUTHEAST OF INDIANTOWN

AJ8886'IN SECTION 25, TOWNSHIP 40 SOUTH, RANGE 39 EAST.

AJ8886'

AJ8886'OWNERSHIP MARTIN COUNTY (STATE ROAD 710 RIGHT OF WAY)

AJ8886'

AJ8886'TO REACH THE STATION FROM THE INTERSECTION OF STATE ROAD 76 AND STATE

AJ8886'ROAD 710 ON THE

AJ8886'BRIDGE OVER STATE ROAD 76 AND THE ST. LUCIE CANAL, GO EAST ON STATE

AJ8886'ROAD 710 FOR 8.0 KM

AJ8886'(5.0 MILES) TO THE MARK ON THE LEFT.

AJ8886'

AJ8886'THE MARK IS 25.9 METERS (85.0 FEET) SOUTH OF A 4 FOOT BARBWIRE FENCE,

AJ8886'9.6 METERS (31.5 FEET)

AJ8886'WEST OF A PK NAIL AND DISK LB 4298 SET IN THE NORTH EDGE OF PAVEMENT

AJ8886'OF STATE ROAD 710, 7.6

AJ8886'METERS (24.9 FEET) EAST OF A PK NAIL AND DISK LB 4298 SET IN THE NORTH

AJ8886'EDGE OF PAVEMENT OF

AJ8886'STATE ROAD 710, 6.3 METERS (20.7 FEET) NORTH OF THE CENTER LINE OF

AJ8886'STATE ROAD 710, 3.5

AJ8886'METERS (11.4 FEET) SOUTH OF A CARSONITE WITNESS POST. ACCESS TO THE

AJ8886'DATUM POINT (TOP OF A

AJ8886'STAINLESS STEEL ROD) IS HAD THROUGH A 5 INCH LOGO CAP.

AJ8886'

AJ8886'NOTE A MAGNET WAS PLACED INSIDE THE PVC ENCASEMENT.

AJ8886'

AJ8886'

AJ8886

AJ8886 STATION RECOVERY (2002)  
AJ8886  
AJ8886'RECOVERY NOTE BY MAPTECH INCORPORATED 2002 (CDP)  
AJ8886'THE STATION IS LOCATED ABOUT 40.1 KM (26.2 MILES) NORTHEAST OF BELLE  
AJ8886'GLADE, ABOUT 29.5 KM  
AJ8886'(18.4 MILES) WEST NORTHWEST OF JUPITER, ABOUT 11.0 KM (6.9 MILES)  
AJ8886'SOUTHEAST OF INDIANTOWN  
AJ8886'IN SECTION 25, TOWNSHIP 40 SOUTH, RANGE 39 EAST.  
AJ8886'  
AJ8886'OWNERSHIP MARTIN COUNTY (STATE ROAD 710 RIGHT OF WAY)  
AJ8886'  
AJ8886'TO REACH THE STATION FROM THE INTERSECTION OF STATE ROAD 76 AND STATE  
AJ8886'ROAD 710 ON THE  
AJ8886'BRIDGE OVER STATE ROAD 76 AND THE ST. LUCIE CANAL, GO EAST ON STATE  
AJ8886'ROAD 710 FOR 8.0 KM  
AJ8886'(5.0 MILES) TO THE MARK ON THE LEFT.  
AJ8886'  
AJ8886'THE MARK IS 25.9 METERS (85.0 FEET) SOUTH OF A 4 FOOT BARBWIRE FENCE,  
AJ8886'9.6 METERS (31.5 FEET)  
AJ8886'WEST OF A PK NAIL AND DISK LB 4298 SET IN THE NORTH EDGE OF PAVEMENT  
AJ8886'OF STATE ROAD 710, 7.6  
AJ8886'METERS (24.9 FEET) EAST OF A PK NAIL AND DISK LB 4298 SET IN THE NORTH  
AJ8886'EDGE OF PAVEMENT OF  
AJ8886'STATE ROAD 710, 6.3 METERS (20.7 FEET) NORTH OF THE CENTER LINE OF  
AJ8886'STATE ROAD 710, 3.5  
AJ8886'METERS (11.4 FEET) SOUTH OF A CARSONITE WITNESS POST. ACCESS TO THE  
AJ8886'DATUM POINT (TOP OF A  
AJ8886'STAINLESS STEEL ROD) IS HAD THROUGH A 5 INCH LOGO CAP.  
AJ8886'  
AJ8886'NOTE A MAGNET WAS PLACED INSIDE THE PVC ENCASMENT.  
AJ8886'  
AJ8886'STATION RECOVERY (2002)  
AJ8886'RECOVERY NOTE BY MAPTECH, INCORPORATED 2002 (CDP) . RECOVERED AS  
AJ8886'DESCRIBED.  
AJ8886'  
AJ8886'

\*\*\* retrieval complete.  
Elapsed Time = 00:00:01

LEVEL RUN

DATE	STA	BS	MEAN	HI	FS	MEAN	ELEV	BM ELEV. NAVD-88	NOTES
08/19/05	NGS BM	6.75							
(FB 2548,	AJ8864	5.01	5.01	30.74				25.73	
PG 52...)	F 547	3.27							
	TP#1				5.54				
					4.09	4.09	26.65		
					2.64				
		5.92							
	SHAKE	4.34	4.34	30.99					
		2.76							
	TP#2				5.28				
					4.36	4.36	26.63		
					3.44				
		4.51							
	SHAKE	4.14	4.14	30.77					
		3.76							
	WELL				6.71				TOP OF PIPE
	M 1045				6.32	6.32	24.45		WELL
					5.92				M 1045
		6.87							
	SHAKE	6.47	6.47	30.92					
		6.07							
	TP#3				4.67				
					4.29	4.29	26.64		
					3.91				
		6.02							
	SHAKE	4.54	4.54	31.17					
		3.05							
	TP#4				5.96				
					4.53	4.53	26.64		
					3.10				
		5.99							
	SHAKE	4.42	4.42	31.06					
		2.85							
	TP#5				5.72				
					4.29	4.29	26.78		
					2.85				
		5.95							
	SHAKE	4.44	4.44	31.22					
		2.93							
	TP#6				5.88				
					4.34	4.34	26.88		
					2.80				
		6.13							
	SHAKE	4.40	4.40	31.28					
		2.67							
	TP#7				6.07				
					4.51	4.51	26.77		
					2.94				



LEVEL RUN

DATE	STA	BS	MEAN	HI	FS	MEAN	ELEV	BM ELEV. NAVD-88	NOTES
		6.07							
	SHAKE	4.37	4.37	31.14					
		2.67							
					6.32				
	TP#8				4.47	4.47	26.68		
					2.61				
		6.37							
	SHAKE	4.45	4.45	31.13					
		2.53							
					6.20				
	TP#9				4.47	4.47	26.66		
					2.74				
		6.38							
	SHAKE	4.34	4.34	31.00					
		2.30							
					6.15				
	TP#10				4.56	4.56	26.44		
					2.97				
		6.19							
	SHAKE	4.40	4.40	30.83					
		2.60							
					5.66				
	TP#11				4.22	4.22	26.62		
					2.77				
		6.07							
	SHAKE	4.42	4.42	31.03					
		2.76							
					5.73				
	TP#12				4.50	4.50	26.53		
					3.27				
		5.73							
	SHAKE	4.21	4.21	30.74					
		2.69							
	NGS BM				7.44				ERROR
	AJ8886				5.88	5.88	24.86	24.88	0.020
	E 547				4.32				
		6.55							TOP OF PIPE
	WELL	6.14	6.14	30.59				24.45	WELL
	M 1045	5.73							M 1045
	BM				5.41				SET SFWMD
	DISC				5.29	5.29	25.31		DISC STAMPED
	M 1045				5.17				M 1045 2005
		5.91							
	SHAKE	5.79	5.79	31.09					
		5.66							
(FB 2548,	BM				4.67				ERROR
PG 50...)	TP#2				4.46	4.46	26.63	26.63	0.000
09/02/05					4.25				