

ESTABLISH ELEV ON WELLS # M1049 & M1239

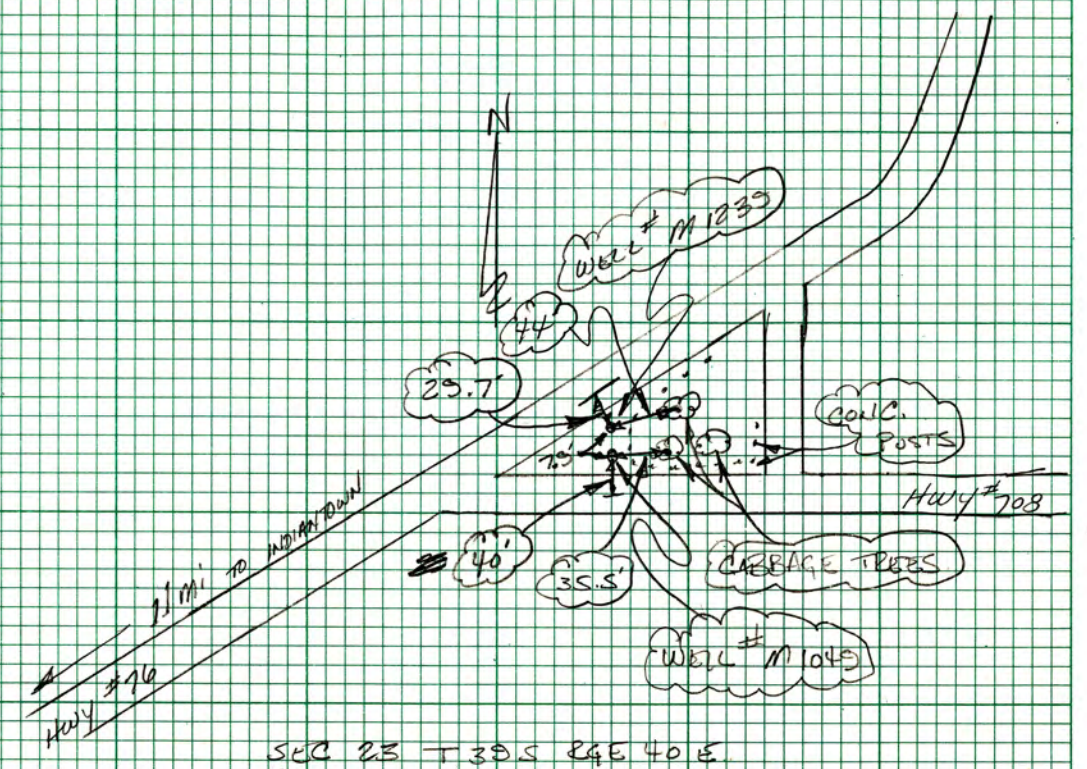
BM	HI	ELEV
BM	5.98 (7.77)	
TBM	6.54 (7.11)	21.54468' NAVD88
TBM	6.35 (7.31)	21.73468' NAVD88

USCGE SS MARK 'ALLEN 1934'

TOP N. SIDE WELL # M 1049 (2" I.P.P.P.)

TOP N. SIDE WELL # M 1239 (2" PVC)

23.6528398333' (7.2094m) NGVD29
22.20468' (6.768m) NAVD88



SEC 23 T39S R4E 40 E

From the "ngvd29.txt" file provided by NGS for the CERP Geodetic Vertical Control Project.
 Line/Part: L26243 SSN+: mark floated, SSN*: mark constrained, SSN#: mark floated & constrained

The NGS Data Sheet

Mark ID SSN PID Designation Geopotential Elevation Codes
 1765 2925 AF0212 ALLEN 7.0652 7.2094

See file [dsdata.txt](#) for more information about the datasheet.

```
PROGRAM = datasheet95, VERSION = 8.8
1 National Geodetic Survey, Retrieval Date = OCTOBER 15, 2015
AF0212 *****
AF0212 DESIGNATION - ALLEN
AF0212 PID - AF0212
AF0212 STATE/COUNTY- FL/MARTIN
AF0212 COUNTRY - US
AF0212 USGS QUAD - INDIAN TOWN SE (1983)
AF0212
AF0212 *CURRENT SURVEY CONTROL
AF0212
AF0212* NAD 83(1990) POSITION- 27 03 34.59053(N) 080 18 17.57718(W) ADJUSTED
AF0212* NAVD 88 ORTHO HEIGHT - 6.768 (meters) 22.20 (feet) ADJUSTED
AF0212
AF0212 LAPLACE CORR - -2.40 (seconds) DEFLEC12B
AF0212 GEOID HEIGHT - -27.102 (meters) GEOID12B
AF0212 DYNAMIC HEIGHT - 6.757 (meters) 22.17 (feet) COMP
AF0212 MODELED GRAVITY - 979,101.8 (mgal) NAVD 88
AF0212
AF0212 HORZ ORDER - FIRST
AF0212 VERT ORDER - FIRST CLASS II
AF0212
AF0212.The horizontal coordinates were established by classical geodetic methods
AF0212.and adjusted by the National Geodetic Survey in May 1991.
AF0212.
AF0212.The orthometric height was determined by differential leveling and
AF0212.adjusted by the NATIONAL GEODETIC SURVEY
AF0212.in February 1997.
AF0212
AF0212.Significant digits in the geoid height do not necessarily reflect accuracy.
AF0212.GEOID12B height accuracy estimate available here.
AF0212
AF0212.The Laplace correction was computed from DEFLEC12B derived deflections.
AF0212
AF0212.The dynamic height is computed by dividing the NAVD 88
AF0212.geopotential number by the normal gravity value computed on the
AF0212.Geodetic Reference System of 1980 (GRS 80) ellipsoid at 45
AF0212.degrees latitude (g = 980.6199 gals.).
AF0212
AF0212.The modeled gravity was interpolated from observed gravity values.
AF0212
AF0212. The following values were computed from the NAD 83(1990) position.
AF0212
AF0212; North East Units Scale Factor Converg.
AF0212;SPC FL E - 302,198.809 268,954.333 MT 0.99999985 +0 18 58.4
AF0212;SPC FL E - 991,463.93 882,394.34 sFT 0.99999985 +0 18 58.4
AF0212;UTM 17 - 2,993,227.682 568,930.806 MT 0.99965865 +0 18 58.4
AF0212
AF0212! - Elev Factor x Scale Factor = Combined Factor
AF0212!SPC FL E - 1.00000319 x 0.99999985 = 1.00000304
AF0212!UTM 17 - 1.00000319 x 0.99965865 = 0.99966184
AF0212
AF0212: Primary Azimuth Mark Grid Az
AF0212:SPC FL E - ALLEN AZ MK RESET 246 33 20.7
AF0212:UTM 17 - ALLEN AZ MK RESET 246 33 20.7
AF0212
AF0212|-----|
```

AF0212	PID	Reference Object	Distance	Geod. Az
AF0212				ddmmss.s
AF0212	AF0207	STUART SOU BELL CO MICROWAVE	APPROX.12.6 KM	0005621.3
AF0212	AF0206	STUART SUNSHINE PKWY MICROWAVE	APPROX.11.2 KM	0012727.0
AF0212	AC5175	ALLEN RM 1 RESET	28.242 METERS	03320
AF0212	AF0211	ALLEN RM A	47.354 METERS	04844
AF0212	DE4108	ALLEN RM 1	28.211 METERS	08513
AF0212	AF0149	AIRWAY BEACON 9	APPROX.14.1 KM	0974826.8
AF0212	AF0130	JUPITER USCG LORAN A C MAST	APPROX.19.1 KM	0985140.4
AF0212	AD6436	JUPITER USCG LORAN CEN MAST	APPROX.22.5 KM	1121009.8
AF0212	AD6427	JUPITER INLET BEACH COLONY TK	APPROX.24.5 KM	1174407.4
AF0212	DE4109	ALLEN RM 2	39.527 METERS	22641
AF0212	DE4112	ALLEN RM 4	33.083 METERS	23950
AF0212	AB9329	ALLEN RM 5	33.083 METERS	23953
AF0212	AF7393	ALLEN AZ MK	APPROX. 0.6 KM	2465219.8
AF0212	AB9330	ALLEN AZ MK RESET		2465219.1
AF0212	DE4111	ALLEN RM 3 AZIMUTH		2483333.2
AF0212	DE4110	ALLEN RM 2 RESET	39.528 METERS	26350

AF0212|-----|

AF0212

AF0212 SUPERSEDED SURVEY CONTROL

AF0212

AF0212 NAD 83(1986)- 27 03 34.59531(N) 080 18 17.58709(W) AD() 1

AF0212 NAD 27 - 27 03 33.40633(N) 080 18 18.41239(W) AD() 1

AF0212

AF0212.Superseded values are not recommended for survey control.

AF0212

AF0212.NGS no longer adjusts projects to the NAD 27 or NGVD 29 datums.

AF0212.[See file dsdata.txt](#) to determine how the superseded data were derived.

AF0212

AF0212_U.S. NATIONAL GRID SPATIAL ADDRESS: 17RNK6893093227(NAD 83)

AF0212

AF0212_MARKER: DS = TRIANGULATION STATION DISK

AF0212_SETTING: 7 = SET IN TOP OF CONCRETE MONUMENT

AF0212_STAMPING: ALLEN 1934

AF0212_MARK LOGO: CGS

AF0212_PROJECTION: RECESSED 20 CENTIMETERS

AF0212_MAGNETIC: O = OTHER; SEE DESCRIPTION

AF0212_STABILITY: C = MAY HOLD, BUT OF TYPE COMMONLY SUBJECT TO

AF0212+STABILITY: SURFACE MOTION

AF0212_SATELLITE: THE SITE LOCATION WAS REPORTED AS SUITABLE FOR

AF0212+SATELLITE: SATELLITE OBSERVATIONS - June 14, 2002

AF0212

AF0212	HISTORY	- Date	Condition	Report By
AF0212	HISTORY	- 1934	MONUMENTED	CGS
AF0212	HISTORY	- 1935	GOOD	CGS
AF0212	HISTORY	- 1941	GOOD	CGS
AF0212	HISTORY	- 1942	GOOD	CGS
AF0212	HISTORY	- 1946	GOOD	CGS
AF0212	HISTORY	- 1953	GOOD	CGS
AF0212	HISTORY	- 1955	GOOD	CGS
AF0212	HISTORY	- 1961	GOOD	CGS
AF0212	HISTORY	- 1985	GOOD	USPSQD
AF0212	HISTORY	- 19850615	GOOD	NGS
AF0212	HISTORY	- 19891231	GOOD	FLDT
AF0212	HISTORY	- 20010803	GOOD	JCLS
AF0212	HISTORY	- 20010902	GOOD	FOST
AF0212	HISTORY	- 20020424	GOOD	MAPTEC
AF0212	HISTORY	- 20020614	GOOD	JCLS

AF0212

AF0212 STATION DESCRIPTION

AF0212

AF0212'DESCRIBED BY COAST AND GEODETIC SURVEY 1934 (JB)

AF0212'TO REACH FROM STUART GO SOUTH ON STATE HIGHWAY 4 TO ITS

AF0212'JUNCTION WITH THE INDIAN TOWN HIGHWAY WHICH IS 0.8 MILE FROM

AF0212'THE RAILROAD STATION IN STUART, TURN WEST ON THIS ROAD WHICH

AF0212' IS A NARROW MACADAM ROAD AND FOLLOW IT FOR 10.0 MILES TO THE
AF0212' STATION. STATION IS 15 FEET NORTH OF THE NORTH EDGE OF THE
AF0212' DRAINAGE DITCH ON THE NORTH SIDE OF THE ROAD, 20 FEET WEST OF
AF0212' A BLAZED PINE TREE WHICH IS IN THE ANGLE FORMED BY THE DIRT
AF0212' SIDE ROAD AND THE DRAINAGE DITCH, AND IS 100 FEET
AF0212' WEST-NORTHWEST OF THE CENTER LINE INTERSECTION OF THE HIGHWAY
AF0212' AND THIS DIRT ROAD. SURFACE MARK IS A STANDARD TABLET SET
AF0212' IN CONCRETE IN A 12-INCH TILE PIPE WHICH PROJECTS 8 INCHES
AF0212' ABOVE THE SURFACE OF THE GROUND.

AF0212'

AF0212' UNDERGROUND MARK IS A COPPER BOLT SET IN CONCRETE.

AF0212' REFERENCE MARKS ARE STANDARD BRONZE DISKS SET IN

AF0212' CONCRETE.

AF0212'

AF0212' REFERENCE MARK NO. 1 IS 125.05 FEET EAST OF THE STATION, 15
AF0212' FEET NORTH OF THE CENTER LINE OF THE HIGHWAY, 20 FEET EAST OF
AF0212' THE DIRT ROAD AND HIGHWAY INTERSECTION, AND PROJECTS 6 INCHES
AF0212' ABOVE THE SURFACE OF GROUND.

AF0212'

AF0212' REFERENCE MARK NO. 2 IS 124.40 FEET SOUTHWEST OF THE STATION,
AF0212' 20 FEET NORTH OF THE CENTER LINE OF THE HIGHWAY, SOUTH OF A
AF0212' STUMP IN THE DITCH WHERE THE SOD EXTENDS ALMOST TO THE NORTH
AF0212' BANK OF THE DITCH, AND PROJECTS 6 INCHES ABOVE THE SURFACE OF
AF0212' GROUND.

AF0212'

AF0212' REFERENCE MARK NO. 3 IS 0.32 MILE WEST-SOUTHWEST OF THE
AF0212' STATION, 15 FEET NORTH OF THE CENTER LINE OF THE HIGHWAY, 10
AF0212' FEET SOUTH OF THE SOUTH EDGE OF THE DRAINAGE DITCH ON THE NORTH
AF0212' SIDE OF THE ROAD, AND 6 INCHES ABOVE THE SURFACE OF THE GROUND.
AF0212' THE THE MARK IS VISIBLE FROM THE GROUND AT THE STATION.

AF0212'

AF0212' THERE ARE NO PROMINENT OBJECTS VISIBLE FROM THE GROUND AT THIS
AF0212' STATION.

AF0212'

AF0212' A 103-FOOT TOWER WILL CLEAR ALL LINES AT THIS STATION.

AF0212'

AF0212' HEIGHT OF LIGHT ABOVE STATION MARK 37 METERS.

AF0212'

AF0212' STATION RECOVERY (1935)

AF0212'

AF0212' RECOVERY NOTE BY COAST AND GEODETIC SURVEY 1935 (JB)

AF0212' THE STATION AND THREE REFERENCE MARKS WERE RECOVERED IN GOOD
AF0212' CONDITION.

AF0212'

AF0212' NOTE--THE ORIGINAL DESCRIPTION WAS NOT AVAILABLE AT THE TIME
AF0212' OF RECOVERY.

AF0212'

AF0212' THE STATION IS LOCATED IN A FIELD OF SCATTERING PINES, 22 PACES
AF0212' NORTH OF THE CENTER LINE OF STATE HIGHWAY 85 AND 109, 8 PACES
AF0212' WEST-SOUTHWEST OF A 14-INCH PINE WITH A DIM TRIANGULAR BLAZE,
AF0212' AND 8 PACES SOUTH-SOUTHWEST OF A SAND ROAD. THE MARK PROJECTS
AF0212' 10 INCHES AND IS STAMPED ALLEN 1934.

AF0212'

AF0212' TO REACH THE STATION FROM THE SEMINOLE INN IN INDIAN TOWN GO
AF0212' EASTWARD ON STATE HIGHWAY 85 FOR 1.5 MILES TO A BRIDGE OVER THE
AF0212' ST. LUCIE CANAL AND THE INTERSECTION OF STATE HIGHWAY 109, HERE
AF0212' TURN LEFT ON STATE HIGHWAY 85 AND 109 FOR 2.9 MILES WHERE THE
AF0212' HIGHWAY BECOMES A ONE-WAY MACADAM ROAD, HERE CONTINUE
AF0212' STRAIGHT AHEAD FOR 9.6 MILES TO A PINE TREE WITH A DIM
AF0212' TRIANGULATION BLAZE, ON THE N SIDE OF THE HIGHWAY, AND THE
AF0212' STATION.

AF0212'

AF0212' REFERENCE MARK NO. 1 IS 38.12 METERS SOUTHEAST OF THE
AF0212' STATION, 5 PACES NORTH OF THE CENTER LINE OF STATE HIGHWAY 85
AF0212' AND 109, AND 2 PACES NORTHEAST OF A SAND ROAD WHERE IT
AF0212' INTERSECTS THE HIGHWAY. THE MARK PROJECTS 3 INCHES AND IS

AF0212'STAMPED ALLEN NO. 1 1934.

AF0212'

AF0212'REFERENCE MARK NO. 2 IS 37.91 METERS SOUTHWEST OF THE STATION,
AF0212'6 PACES NORTH OF THE CENTER LINE OF STATE HIGHWAY 85 AND 109,
AF0212'AND 6 PACES SOUTH-SOUTHWEST OF A BURNT PINE STUMP. THE MARK
AF0212'PROJECTS 6 INCHES AND IS STAMPED ALLEN NO.2 1934.

AF0212'

AF0212'REFERENCE MARK NO.3, AZIMUTH MARK, IS APPROXIMATELY 0.35
AF0212'MILE WEST-SOUTHWEST OF THE STATION, 40 PACES EAST OF A HIGHWAY
AF0212'CURVE SIGN TO THE NORTH, AND 6 PACES NORTH OF THE CENTER LINE
AF0212'OF STATE HIGHWAY 85 AND 109. THE MARK PROJECTS 6 INCHES
AF0212'AND IS STAMPED ALLEN NO.3 1934.

AF0212'

AF0212'A 90-FOOT TOWER WILL CLEAR ALL LINES OBSERVED.

AF0212

AF0212

STATION RECOVERY (1941)

AF0212

AF0212'RECOVERY NOTE BY COAST AND GEODETIC SURVEY 1941 (FRD)
AF0212'TO REACH STATION FROM STUART, GO S ON HIGHWAY 4 TO ITS JUNCTION
AF0212'WITH THE INDIANTOWN HIGHWAY, WHICH JUNCTION IS 0.8 MILE FROM
AF0212'THE RAILROAD. FOLLOW THIS ROAD FOR 10.00 MILES TO THE STATION.
AF0212'

AF0212'STATION IS 30 FEET N OF THE CENTER LINE OF PAVING AND 324.5
AF0212'FEET E OF THE SE CORNER OF THE N HANDRAIL OF SMALL CONCRETE
AF0212'BRIDGE BUILT IN 1941.

AF0212'

AF0212'DUE TO THE RECONSTRUCTION OF THE ROAD BETWEEN INDIANTOWN AND
AF0212'STUART IT WAS FOUND NECESSARY TO RELOCATE THE REFERENCE POINTS
AF0212'ALLEN NOS. 1, 2, AND 3.

AF0212

AF0212

STATION RECOVERY (1942)

AF0212

AF0212'RECOVERY NOTE BY COAST AND GEODETIC SURVEY 1942 (KGC)
AF0212'THE FOLLOWING DISCREPANCIES WERE NOTED IN THE 1934-1935
AF0212'DESCRIPTION--

AF0212'

AF0212'ALLEN 1934 IS NO LONGER IN A FIELD OF SCATTERED PINES, BUT
AF0212'DUE TO HIGHWAY CONSTRUCTION THE STATION IS NOW ON A SMALL
AF0212'ISLAND LEFT BY CONSTRUCTORS, IN A WIDE DITCH. THE SAND ROAD
AF0212'MENTIONED IN DESCRIPTION IS NO LONGER IN EXISTENCE, ALSO THE
AF0212'ONE-WAY MACADAM ROAD IS NO LONGER IN EXISTENCE, BUT IS NOW
AF0212'A NEW TWO-LANE HIGHWAY. THE TOTAL DISTANCE FROM JUNCTION
AF0212'OF STATE HIGHWAYS 109 AND 85 IS 9.95 MILES INSTEAD OF 12.5.
AF0212'ALL TREES MENTIONED IN DESCRIPTION HAVE BEEN CUT.

AF0212'

AF0212'ALL DISTANCES AND ANGLES TO REFERENCE MARKS ARE NO LONGER OF
AF0212'VALUE DUE TO ALL REFERENCE MARKS HAVING BEEN RESET.

AF0212'

AF0212'THE NEW DESCRIPTION FOLLOWS--

AF0212'

AF0212'STATION IS LOCATED ABOUT 10 MILES SSW OF STUART, ABOUT 9.7
AF0212'MILES NNE OF INDIANTOWN, ALONG HIGHWAY 109, IN A WIDE DITCH
AF0212'30.0 FEET N OF THE CENTER LINE OF THE HIGHWAY,
AF0212'332.0 FEET E OF A CONCRETE BRIDGE, ON AN ISLAND LEFT BY HIGHWAY
AF0212'CONSTRUCTION, AT THE BEGINNING OF A LONG CURVE.

AF0212'

AF0212'STATION MARK IS A BRONZE STATION DISK, STAMPED AS NAMED, SET
AF0212'IN THE TOP OF A 10-INCH-DIAMETER TILE FILLED WITH CONCRETE,
AF0212'EXTENDING 4 INCHES ABOVE GROUND.

AF0212'

AF0212'R.M. 1 1934 RESET 1941 IS A BRONZE REFERENCE DISK, STAMPED AS
AF0212'NAMED, SET IN THE TOP OF A 10-INCH-DIAMETER TILE FILLED WITH
AF0212'CONCRETE, EXTENDING 10 INCHES ABOVE GROUND. IT IS ON THE N
AF0212'BANK OF DITCH IN THE EDGE OF THE PINEY WOODS, 28.2 METERS FROM
AF0212'THE STATION. (THIS MARK
AF0212'WAS RESET DURING HIGHWAY CONSTRUCTION BY THE CONSTRUCTION

AF0212'COMPANY.)

AF0212'

AF0212'R.M. 2 1934 RESET 1941 IS A BRONZE REFERENCE DISK, STAMPED AS
AF0212'NAMED, SET IN THE TOP OF A 10-INCH-DIAMETER TILE FILLED WITH
AF0212'CONCRETE, EXTENDING 5 INCHES ABOVE GROUND. IT IS ON THE N BANK
AF0212'OF THE DITCH IN THE EDGE OF THE PINEY WOODS, 39.5 METERS FROM
AF0212'THE STATION. (THIS MARK

AF0212'WAS RESET DURING HIGHWAY CONSTRUCTION BY THE CONSTRUCTION
AF0212'COMPANY, AND POINTS TO R.M. 1 INSTEAD OF THE STATION.)

AF0212'

AF0212'R.M. 3 1934 RESET 1941 (AZIMUTH MARK) IS A BRONZE REFERENCE DISK,
AF0212'STAMPED AS NAMED, SET IN THE TOP OF A 10-INCH-DIAMETER TILE FILLED
AF0212'WITH CONCRETE, AND EXTENDS 1 INCH ABOVE GROUND. IT IS ABOUT
AF0212'0.4 MILE WSW OF ALLEN 1934, AT A SAND ROAD CROSSING, 27.0 FEET
AF0212'W OF THE CENTER LINE OF SAND ROAD, AND 76.3 FEET N OF THE CENTER
AF0212'LINE OF STATE HIGHWAY 109. IT IS ON A FENCE LINE, 10 FEET W
AF0212'OF FENCE CORNER. (THIS MARK WAS RESET DURING HIGHWAY
AF0212'CONSTRUCTION BY THE CONSTRUCTION COMPANY).

AF0212'

AF0212'TO REACH THE STATION FROM SEMINOLE INN IN INDIANTOWN, GO SE ON
AF0212'STATE HIGHWAY 85 FOR 1.55 MILES TO A BRIDGE OVER ST. LUCIE
AF0212'CANAL AND THE JUNCTION OF STATE HIGHWAYS 109 AND 85, HERE TURN
AF0212'E ON STATE HIGHWAY 109 FOR 9.95 MILES TO STATION.

AF0212'

AF0212'ANGLES ARE NO LONGER OF VALUE AS ALL REFERENCE MARKS HAVE BEEN
AF0212'MOVED.

AF0212'

AF0212'A 90-FOOT TOWER WILL CLEAR ALL LINES OBSERVED. (TAKEN FROM
AF0212'1934-1935 DESCRIPTION.)

AF0212

AF0212 STATION RECOVERY (1946)

AF0212

AF0212'RECOVERY NOTE BY COAST AND GEODETIC SURVEY 1946 (RAG)
AF0212'STATION RECOVERED AS DESCRIBED IN PREVIOUS DESCRIPTIONS SHOWING
AF0212'R.M.S AS RESET BY THE FLORIDA STATE ROAD DEPARTMENT IN 1941
AF0212'EXCEPT--

AF0212'

AF0212'1. DISTANCE OF R.M. 1 (RESET) IS 92.65 FEET, INSTEAD OF 98.68
AF0212'FEET.

AF0212'

AF0212'2. STATE HIGHWAY 76, INSTEAD OF STATE HIGHWAY 85 AND 109.

AF0212'

AF0212'3. AZIMUTH MARK COULD NOT BE FOUND, IT WAS PROBABLY COVERED
AF0212'WITH DIRT DURING LANDSCAPING IN THE VICINITY.

AF0212'

AF0212'THE 1942 RECOVERY NOTE WAS NOT AVAILABLE AT THIS RECOVERY. NO
AF0212'APPARENT CHANGES HAVE BEEN MADE SINCE THE REFERENCE MARKS
AF0212'WERE RESET.

AF0212

AF0212 STATION RECOVERY (1953)

AF0212

AF0212'RECOVERY NOTE BY COAST AND GEODETIC SURVEY 1953 (DAJ)
AF0212'THE STATION AND REFERENCE MARKS NOS. 1 AND 2 WERE RECOVERED
AF0212'AND FOUND TO BE IN GOOD CONDITION. A NEW AZIMUTH MARK WAS SET.

AF0212'

AF0212'THE 1942 DESCRIPTION BY K.G.C. IS ADEQUATE, EXCEPTING, THE
AF0212'HIGHWAY NOS. ARE NOW 76 AND 70 AND THE ADDED DESCRIPTION OF THE
AF0212'MARKS.

AF0212'

AF0212'THE STATION MARK IS 29.8 FEET NORTH OF THE CENTERLINE OF HIGHWAY
AF0212'76 AND 52.8 FEET SOUTH OF THE RIGHT-AWAY FENCE.

AF0212'

AF0212'REFERENCE MARK NO. 1 IS 72.7 FEET NORTH OF THE CENTERLINE OF
AF0212'THE HIGHWAY AND 6 FEET SOUTH OF THE RIGHT-OF-WAY FENCE.

AF0212'

AF0212'REFERENCE MARK NO. 2 IS 77 FEET NORTH OF THE CENTERLINE OF

AF0212'THE HIGHWAY AND 9 FEET SOUTH OF THE RIGHT-OF-WAY FENCE.
AF0212'
AF0212'AZIMUTH MARK IS ALONG THE SOUTH SIDE OF HIGHWAY 76 OPPOSITE
AF0212'AN ARCHED DRIVEWAY, 70 FEET WEST OF THE CENTERLINE OF A
AF0212'DRIVEWAY, 44 FEET SOUTH OF THE CENTERLINE OF THE HIGHWAY, 8
AF0212'FEET EAST OF A DRAINAGE DITCH AND 1 FOOT NORTHEAST OF A WITNESS
AF0212'POST. THE MARK PROJECTS ABOUT 6 INCHES AND THE DISK IS
AF0212'STAMPED ALLEN 1934 RESET 1953.
AF0212'
AF0212'TO REACH THE AZIMUTH MARK FROM THE STATION, GO WESTERLY ON
AF0212'HIGHWAY 76 FOR 0.3 MILE TO THE MARK ON THE LEFT ACROSS THE ROAD
AF0212'FROM THE MONREVE RANCH ARCHED DRIVEWAY.
AF0212'
AF0212'OBSERVATIONS TAKEN FROM A 103 FT. TOWER.
AF0212
AF0212 STATION RECOVERY (1955)
AF0212
AF0212'RECOVERY NOTE BY COAST AND GEODETIC SURVEY 1955 (DAJ)
AF0212'STATION WAS RECOVERED AS DESCRIBED AND ALL MARKS EXCEPT
AF0212'REFERENCE MARK NO. 2 FOUND IN GOOD CONDITION. A SEARCH WAS
AF0212'MADE TO RECOVER REFERENCE MARK NO. 2, BUT DUE TO ROAD
AF0212'CONSTRUCTION IT IS BELIEVED TO BE DESTROYED. THEREFORE
AF0212'REFERENCE MARK NO. 4 WAS ESTABLISHED.
AF0212'
AF0212'REFERENCE MARK NO. 4 IS 26 FEET NORTH OF THE APPROXIMATE
AF0212'CENTERLINE OF STATE HIGHWAY NO. 76, AND 1 FOOT NORTH OF A
AF0212'WITNESS POST. THE MARK PROJECTS 6 INCHES AND THE DISK IS
AF0212'STAMPED ALLEN NO 4 1955.
AF0212'
AF0212'A CHECK WAS MADE OF THE DISTANCE AND DIRECTION TO THE MARKS
AF0212'AND FOUND TO BE CORRECT.
AF0212'
AF0212'THE 1953 DESCRIPTION IS ADEQUATE.
AF0212
AF0212 STATION RECOVERY (1961)
AF0212
AF0212'RECOVERY NOTE BY COAST AND GEODETIC SURVEY 1961 (SCM)
AF0212'STATION AND REFERENCE MARKS NO. 1, 2 AND 4 AND THE AZIMUTH
AF0212'MARK WERE RECOVERED AS DESCRIBED AND FOUND IN GOOD CONDITION. A
AF0212'COMPLETE NEW DESCRIPTION FOLLOWS--
AF0212'
AF0212'STATION IS LOCATED ALONG THE NORTH RIGHT-OF-WAY OF STATE
AF0212'HIGHWAY NO. 76 ABOUT 15-1/2 MILES NORTHWEST OF JUPITER, ABOUT
AF0212'9.0 MILES SOUTHWEST OF STUART AND ABOUT 10.0 MILES
AF0212'EAST-NORTHEAST OF INDIANTOWN. STATION, A STANDARD DISK, SET
AF0212'IN A ROUND CONCRETE MONUMENT AND STAMPED ALLEN 1934 IS 30 FEET
AF0212'NORTHWEST OF THE APPROXIMATE CENTERLINE OF STATE HIGHWAY NO. 76,
AF0212'3.1 FEET SOUTHEAST OF A STEEL WITNESS POST WITH METAL SIGN
AF0212'AND 1.5 FEET EAST OF A 2X4 INCH WITNESS POST. THE MARK
AF0212'PROJECTS 2 INCHES.
AF0212'
AF0212'TO REACH FROM THE JUNCTION OF STATE HIGHWAYS NO. 710 AND 76
AF0212'IN THE SOUTHEAST EDGE OF INDIANTOWN, GO EASTERLY ON STATE
AF0212'HIGHWAY NO. 76 FOR 9.2 MILES TO CROSSROADS
AF0212'AND AZIMUTH MARK ON RIGHT (SOUTH) SIDE OF HIGHWAY AS
AF0212'DESCRIBED. CONTINUE NORTHEASTERLY ON STATE HIGHWAY NO. 76 FOR
AF0212'0.3 MILE TO JUNCTION OF STATE HIGHWAY NO. 708. CONTINUE
AF0212'NORTHEASTERLY ON STATE HIGHWAY NO. 76 FOR 0.05 MILE TO STATION ON
AF0212'LEFT (NORTH) SIDE OF HIGHWAY AS DESCRIBED.
AF0212'
AF0212'REFERENCE MARK NO. 1, A STANDARD DISK SET IN A ROUND CONCRETE
AF0212'MONUMENT AND STAMPED RESET 1941 ALLEN 1934 NO 1 IS 5-1/2 FEET
AF0212'SOUTH OF THE FENCELINE AND 1.4 FEET EAST OF A 2X4 INCH WITNESS
AF0212'POST. THE MARK PROJECTS 4 INCHES.
AF0212'
AF0212'REFERENCE MARK NO. 2, A STANDARD DISK SET IN A ROUND CONCRETE

AF0212'MONUMENT AND STAMPED ALLEN 1934 RESET 1941 NO 2 IS 9.0 FEET
AF0212'SOUTH-SOUTHEAST OF FENCELINE AND 77 FEET NORTH OF THE APPROXIMATE
AF0212'CENTERLINE OF STATE HIGHWAY NO. 76. THE MARK PROJECTS 4
AF0212'INCHES.
AF0212'
AF0212'REFERENCE MARK NO. 4, A STANDARD DISK SET IN A SQUARE CONCRETE
AF0212'MONUMENT AND STAMPED ALLEN NO 4 1955 IS 26 FEET NORTH OF THE
AF0212'CENTERLINE OF HIGHWAY. THE MARK IS FLUSH WITH THE
AF0212'GROUND.
AF0212'
AF0212'AZIMUTH MARK, A STANDARD DISK SET IN A SQUARE CONCRETE MONUMENT
AF0212'AND STAMPED ALLEN 1934 RESET 1953 IS 25 FEET SOUTH OF THE
AF0212'APPROXIMATE CENTERLINE OF HIGHWAY, 70 FEET WEST OF THE
AF0212'APPROXIMATE CENTERLINE OF A SAND ROAD 34 FEET NORTHWEST OF A PINE
AF0212'TREE AND 1.4 FEET NORTH OF A WITNESS POST. THE MARK PROJECTS 2
AF0212'INCHES.
AF0212'
AF0212'ALLEN RM A, A STANDARD DISK SET IN A 12X12 INCH CONCRETE
AF0212'MONUMENT AND STAMPED ALLEN RM A 1961 IS 60 FEET NORTH OF THE
AF0212'APPROXIMATE CENTERLINE OF HIGHWAY. 20.8 FEET SOUTH OF
AF0212'FENCELINE AND 1.3 FEET WEST OF WITNESS POST. THE MARK
AF0212'PROJECTS 4 INCHES.
AF0212'
AF0212'1961 OBSERVATIONS TAKEN FROM A 103 FOOT TOWER.
AF0212
AF0212 STATION RECOVERY (1985)
AF0212
AF0212'RECOVERY NOTE BY US POWER SQUADRON 1985 (FGH)
AF0212'RECOVERED IN GOOD CONDITION.
AF0212
AF0212 STATION RECOVERY (1985)
AF0212
AF0212'RECOVERY NOTE BY NATIONAL GEODETIC SURVEY 1985 (CLN)
AF0212'STATION MARK, REFERENCE MARKS 1, 2, 4 AND AZIMUTH RM A 1961 WERE FOUND
AF0212'IN GOOD CONDITION. AZIMUTH MARK WAS RECOVERED IN GOOD CONDITION. THE
AF0212'DISTANCE TO REFERENCE MARK 2 AND ALLEN RM A 1961 CHECKED THE 1961
AF0212'RECOVERY NOTE. A SHORTER DISTANCE OF 0.09 FT (2.74 CM) OR 0.027 METERS
AF0212'(0.089 FT) WAS MEASURED TO REFERENCE MARK 1. REFERENCE MARK 4 WAS
AF0212'FOUND DESTROYED. REFERENCE MARK 5 WAS ESTABLISHED AT THIS TIME. A
AF0212'DIFFERENCE OF 05 MINUTES 09 SECONDS WAS OBSERVED TO REFERENCE MARK 1.
AF0212'(REFERENCE MARK 1 IS CHIPPED) . A DIFFERENCE OF 02 MINUTES 05 SECONDS
AF0212'WAS OBSERVED TO REFERENCE MARK 2. A DIFFERENCE OF 01 MINUTE 23.2
AF0212'SECONDS WAS OBSERVED TO ALLEN RM A 1961. THE TILE HAS BEEN KNOCKED OFF
AF0212'THE STATION MARK. AT THIS TIME THE DIRT WAS DUG OUT ABOUT A FOOT DOWN
AF0212'ALONG SIDE OF MONUMENT AND A LARGE CONCRETE COLLAR WAS POURED AROUND
AF0212'IT. DUE TO CHANGES, A COMPLETE NEW DESCRIPTION FOLLOWS. THE STATION IS
AF0212'LOCATED ABOUT 24.80 KM (15.40 MI) NORTHWEST OF JUPITER, ABOUT 14.40 KM
AF0212'(8.95 MI) SOUTHWEST OF STUART, ABOUT 16.00 KM (9.95 MI) EAST-NORTHEAST
AF0212'OF INDIANTOWN, NEAR THE JUNCTION OF STATE HIGHWAY 76 AND COUNTY ROAD
AF0212'708 AND ON THE NORTHWEST SIDE OF STATE HIGHWAY 76 ON HIGHWAY
AF0212'RIGHT-OF-WAY. TO REACH THE STATION FROM THE JUNCTION OF US HIGHWAY 1
AF0212'AND STATE HIGHWAY 76 IN DOWNTOWN STUART, FOLLOW STATE HIGHWAY 76 SOUTH
AF0212'AND SOUTHWEST FOR 17.28 KM (10.75 MI) TO JUNCTION OF COUNTY ROAD 708
AF0212'ON LEFT AND STATION ON RIGHT JUST BEFORE REACHING ROAD INTERSECTION.
AF0212'THE STATION IS A STANDARD CGS DISK STAMPED,--ALLEN 1934--, SET INTO
AF0212'THE TOP OF A ROUND CONCRETE MONUMENT, 30 CM (12 IN) IN DIAMETER,
AF0212'RECESSED 20 CM (8 IN) BELOW THE GROUND. THE STATION IS LOCATED 101.65
AF0212'METERS (333.50 FT) NORTHWEST OF THE CENTER OF CONCRETE BRIDGE AT
AF0212'HIGHWAY JUNCTION, 9.30 METERS (30.51 FT) NORTHWEST OF THE CENTER OF
AF0212'STATE HIGHWAY 76, 16.46 METERS (54.00 FT) SOUTHEAST OF A WIRE FENCE.
AF0212'23.77 METERS (77.99 FT) EAST NORTHEAST OF THE CENTER OF FOUR PALMETTO
AF0212'TREES, 0.43 METERS (1.41 FT) SOUTHEAST OF A METAL WITNESS POST. THE
AF0212'UNDERGROUND MARK IS A BOLT IN TOP OF AN IRREGULAR MASS OF CONCRETE.
AF0212'REFERENCE MARK 1 IS A STANDARD CGS DISK STAMPED,--ALLEN NO 1 1934--,
AF0212'SET INTO THE TOP OF A ROUND CONCRETE MONUMENT, 30 CM (12 IN) IN
AF0212'DIAMETER, PROJECTING 4 INCHES ABOVE THE GROUND. THE STATION IS LOCATED

DATE/TIME

AF0212'23.93 METERS (78.51 FT) NORTHWEST OF THE CENTER OF STATE HIGHWAY 76,
 AF0212'1.98 METERS (6.50 FT) WEST OF AN 18-INCH PINE TREE, 1.83 METERS (6.00
 AF0212'FT) SOUTHEAST OF A WIRE FENCE, 0.61 METERS (2.00 FT) SOUTH OF A METAL
 AF0212'WITNESS POST. REFERENCE MARK 2 IS A STANDARD CGS DISK STAMPED,--ALLEN
 AF0212'1934 NO 2--, SET INTO THE TOP OF A ROUND CONCRETE MONUMENT, 30 CM (12
 AF0212'IN) IN DIAMETER, PROJECTING 2 INCHES ABOVE THE GROUND. THE STATION IS
 AF0212'LOCATED 23.16 METERS (75.98 FT) NORTHWEST OF THE CENTER OF STATE
 AF0212'HIGHWAY 76, 15.85 METERS (52.00 FT) WEST OF THE CENTER OF FOUR
 AF0212'PALMETTO TREES, 2.59 METERS (8.50 FT) SOUTHEAST OF A WIRE FENCE, .30
 AF0212'METERS (0.98 FT) NORTHEAST OF A WITNESS POST. REFERENCE MARK 5 IS A
 AF0212'STANDARD NGS DISK STAMPED,--ALLEN 1934 NO 5 1985--, SET INTO THE TOP
 AF0212'OF A SQUARE CONCRETE MONUMENT, 30 CM (12 IN) ON SIDE, FLUSH WITH THE
 AF0212'SURFACE. THE STATION IS LOCATED 66.58 METERS (218.44 FT) NORTHEAST OF
 AF0212'THE CENTER OF CONCRETE BRIDGE AT HIGHWAY JUNCTION, 7.77 METERS (25.49
 AF0212'FT) NORTHWEST OF THE CENTER OF STATE HIGHWAY 76, 13.41 METERS (44.00
 AF0212'FT) SOUTH OF A CLUSTER OF FOUR PALMETTO TREES, 4.88 METERS (16.01 FT)
 AF0212'SOUTHEAST OF A WITNESS POST AND .30 METERS (0.98 FT) LOWER THAN THE
 AF0212'STATION. AZIMUTH MARK NO 1 IS A STANDARD CGS DISK STAMPED,--ALLEN 1934
 AF0212'RESET 1953--, IS SET INTO A SQUARE CONCRETE POST 30 CM (12 IN) ON
 AF0212'SIDE, FLUSH WITH THE GROUND. THE STATION IS LOCATED 13.56 METERS
 AF0212'(44.49 FT) EAST OF THE CENTER OF STATE HIGHWAY 76, 24.99 METERS (81.99
 AF0212'FT) WEST OF A WIRE FENCE, 21.49 METERS (70.51 FT) SOUTH OF THE CENTER
 AF0212'OF A DIRT ROAD, 0.46 METERS (1.51 FT) WEST OF A METAL WITNESS POST,
 AF0212'5.18 METERS (16.99 FT) NORTH OF THE CENTER OF A DITCH, TO REACH THE
 AF0212'AZMITH MARK GO SOUTHWEST ON STATE HIGHWAY 76 FOR 0.51 KM (0.30 MI) TO
 AF0212'MARK ON EAST SIDE OF HIGHWAY AND SOUTH OF A DRIVEWAY. ALLEN RM A IS A
 AF0212'STANDARD CGS DISK STAMPED,--ALLEN RM A 1961--, IS SET INTO A SQUARE
 AF0212'CONCRETE POST 30 CM (12 IN) ON SIDE, PROJECTING 3 INCHES ABOVE GROUND.
 AF0212'THE STATION IS LOCATED 16.5 FT NORTHEAST OF A 15 INCH PINE TREE, 61.5
 AF0212'FT NORTHWEST OF THE CENTER OF STATE HIGHWAY 76, 21.0 FT SOUTHEAST OF A
 AF0212'WIRE FENCE AND 2.5 FT WEST OF A WITNESS POST.

AF0212

AF0212

STATION RECOVERY (1989)

AF0212

AF0212'RECOVERY NOTE BY FLORIDA DEPARTMENT OF TRANSPORTATION 1989 (CBM)
 AF0212'TO REACH THE MARK FROM THE INTERCHANGE OF INTERSTATE ROUTE 95 AND SR
 AF0212'708, ABOUT 6 MILES (9.7 KM) WEST OF JUPITER ISLAND, GO WESTERLY ON
 AF0212'STATE ROAD 708 FOR ABOUT 4.9 MILES (7.9 KM) TO THE INTERSECTION OF
 AF0212'STATE ROAD 76 AND THE MARK. IT IS 36.0 FEET (11.0 M) NORTHWEST OF A
 AF0212'HIGHWAY SIGN POST, 30.5 FEET (9.3 M) NORTH OF THE CENTER OF STATE ROAD
 AF0212'76 AND 25.8 FEET (7.9 M) SOUTHEAST OF A 15 INCH PINE TREE.

AF0212

AF0212

STATION RECOVERY (2001)

AF0212

AF0212'RECOVERY NOTE BY JOHN CHANCE LAND SURVEYS INC 2001

AF0212'RECOVERED IN GOOD CONDITION.

AF0212

AF0212

STATION RECOVERY (2001)

AF0212

AF0212'RECOVERY NOTE BY CHARLEY FOSTER AND ASSOCIATES 2001 (JB)

AF0212'THE MONUMENT WAS RECOVERED AS DESCRIBED.

AF0212'

AF0212

AF0212

STATION RECOVERY (2002)

AF0212

AF0212'RECOVERY NOTE BY MAPTECH INCORPORATED 2002 (CDP)

AF0212'THE MONUMENT WAS RECOVERED AS DESCRIBED.

AF0212'

AF0212'STATION RECOVERY (2002)

AF0212'RECOVERY NOTE BY MAPTECH, INCORPORATED 2002 (CDP)

AF0212'RECOVERED AS DESCRIBED.

AF0212'

AF0212'

AF0212

AF0212

STATION RECOVERY (2002)

AF0212

AF0212'RECOVERY NOTE BY JOHN CHANCE LAND SURVEYS INC 2002
AF0212'RECOVERED IN GOOD CONDITION.

*** retrieval complete.
Elapsed Time = 00:00:04