

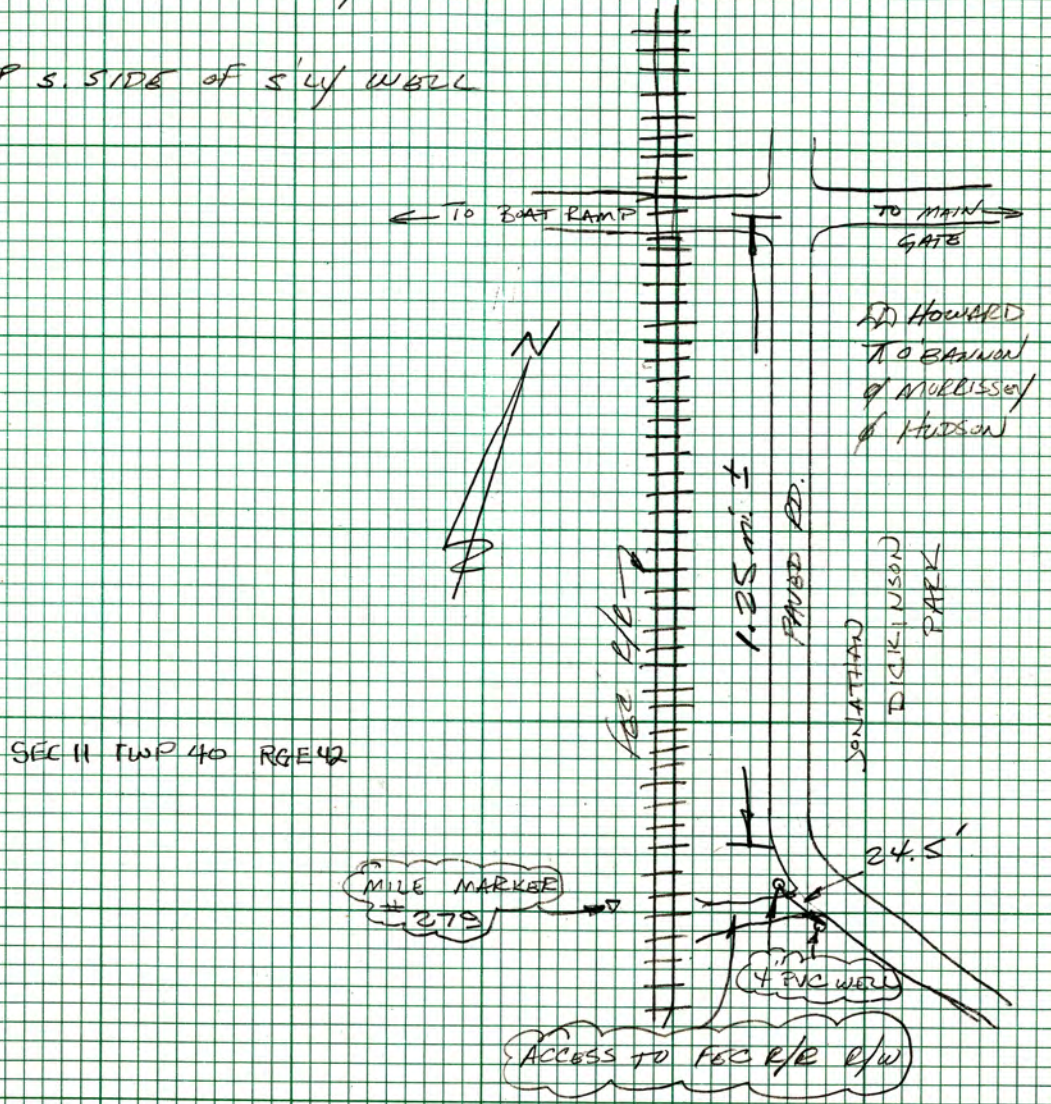
STA	+	+	-	ELEV
	ESTABLISH ELEV. ON WELLS # M 1054			
B.M.	4.43 (5.23)	16.57		12.54
TEM			3.33 (10.34)	13.64
TEM			3.68 (9.89)	13.29

SEC 13 TWP 40S RGE 42E

NOTES

For 2-4" PVC wells @ location shown on sketch, I put an elev. on top S. side of both wells as I was unable to determine which well is # M 1054 from description sheet that shows only one well. It would be a great help if the people that write descriptions would do a better job!

USCE'S MON. "M 34 1933" FB IN EXCELLENT CONDITION
 TOP S. SIDE OF N'LY WELL
 TOP S. SIDE OF S'LY WELL



SEC 11 TWP 40 RGE 42

The NGS Data Sheet

See file [dsdata.txt](#) for more information about the datasheet.



```

PROGRAM = datasheet95, VERSION = 8.8
1      National Geodetic Survey,  Retrieval Date =
AD3008 *****
AD3008 DESIGNATION - M 34
AD3008 PID - AD3008
AD3008 STATE/COUNTY- FL/MARTIN
AD3008 COUNTRY - US
AD3008 USGS QUAD - JUPITER (1983)
AD3008
AD3008 *CURRENT SURVEY CONTROL
AD3008
AD3008* NAD 83(1986) POSITION- 26 59 43. (N) 080 06 22. (W) SCALED
AD3008* NAVD 88 ORTHO HEIGHT - 3.367 (meters) 11.05 (feet) ADJUSTED
AD3008
AD3008 GEOID HEIGHT - -27.529 (meters) GEOID12B
AD3008 DYNAMIC HEIGHT - 3.362 (meters) 11.03 (feet) COMP
AD3008 MODELED GRAVITY - 979,093.5 (mgal) NAVD 88
AD3008
AD3008 VERT ORDER - FIRST CLASS I
AD3008
AD3008.The horizontal coordinates were scaled from a topographic map and have
AD3008.an estimated accuracy of +/- 6 seconds.
AD3008.
AD3008.The orthometric height was determined by differential leveling and
AD3008.adjusted by the NATIONAL GEODETIC SURVEY
AD3008.in June 1991.
AD3008
AD3008.WARNING-Repeat measurements at this control monument indicate possible
AD3008.vertical movement.
AD3008
AD3008.Significant digits in the geoid height do not necessarily reflect accuracy.
AD3008.GEOID12B height accuracy estimate available here.
AD3008
AD3008.The dynamic height is computed by dividing the NAVD 88
AD3008.geopotential number by the normal gravity value computed on the
AD3008.Geodetic Reference System of 1980 (GRS 80) ellipsoid at 45
AD3008.degrees latitude (g = 980.6199 gals.).
AD3008
AD3008.The modeled gravity was interpolated from observed gravity values.
AD3008
AD3008;
AD3008;SPC FL E - North East Units Estimated Accuracy
AD3008; 295,200. 288,720. MT (+/- 180 meters Scaled)
AD3008
AD3008 SUPERSEDED SURVEY CONTROL
AD3008
AD3008 NGVD 29 (??/??/92) 3.823 (m) 12.54 (f) ADJ UNCH 1 1
AD3008
AD3008.Superseded values are not recommended for survey control.
AD3008
AD3008.NGS no longer adjusts projects to the NAD 27 or NGVD 29 datums.
AD3008.See file dsdata.txt to determine how the superseded data were derived.
AD3008
AD3008_U.S. NATIONAL GRID SPATIAL ADDRESS: 17RNK886862(NAD 83)
AD3008
AD3008_MARKER: DB = BENCH MARK DISK
AD3008_SETTING: 7 = SET IN TOP OF CONCRETE MONUMENT
AD3008_STAMPING: M 34 1933 12.516

```

DATASHEETS

AD3008_MARK LOGO: CGS
 AD3008_MAGNETIC: N = NO MAGNETIC MATERIAL
 AD3008_STABILITY: C = MAY HOLD, BUT OF TYPE COMMONLY SUBJECT TO
 AD3008+STABILITY: SURFACE MOTION

AD3008

AD3008	HISTORY	- Date	Condition	Report By
AD3008	HISTORY	- 1933	MONUMENTED	CGS
AD3008	HISTORY	- 1965	GOOD	CGS
AD3008	HISTORY	- 1972	GOOD	NGS
AD3008	HISTORY	- 1980	GOOD	FLDNR
AD3008	HISTORY	- 20010426	GOOD	GCYI

AD3008

AD3008 STATION DESCRIPTION

AD3008

AD3008'DESCRIBED BY COAST AND GEODETIC SURVEY 1965

AD3008'4.3 MI N FROM JUPITER.

AD3008'ABOUT 4.3 MILES NORTH ALONG THE FLORIDA EAST COAST RAILWAY FROM
 AD3008'THE FREIGHT STATION AT JUPITER, IN SECTION 13, R 42 E, T 40 S,

AD3008'0.35 MILE SOUTH OF A ROAD CROSSING, 64 FEET NORTHEAST OF AND

AD3008'ACROSS THE TRACK FROM MILEPOST 279, 37.9 FEET NORTHEAST OF THE

AD3008'NORTHEAST RAIL, 75 FEET SOUTHWEST OF THE CENTER LINE OF A BLACK

AD3008'TOP ROAD, 50 YARDS SOUTHEAST OF A SMALL POND, 1.3 FEET SOUTHEAST

AD3008'OF A METAL WITNESS POST, 1 FOOT BELOW THE LEVEL OF THE TRACK

AD3008'AND SET IN THE TOP OF A CONCRETE POST PROJECTING 2 INCHES

AD3008'ABOVE THE LEVEL OF THE GROUND. NOTE-- THE MARK IS 65.5 FEET

AD3008'NORTHEAST OF AND ACROSS THE TRACK FROM MILEPOST 279, INSTEAD

AD3008'OF 64 FEET. ALSO, THERE IS A DIM TRAIL 13 FEET SOUTH OF THE

AD3008'MARK BUT IT DOES NOT CROSS THE RAILROAD.

AD3008

AD3008 STATION RECOVERY (1972)

AD3008

AD3008'RECOVERY NOTE BY NATIONAL GEODETIC SURVEY 1972

AD3008'RECOVERED IN GOOD CONDITION.

AD3008

AD3008 STATION RECOVERY (1980)

AD3008

AD3008'RECOVERY NOTE BY FL DEPT OF NAT RES 1980

AD3008'RECOVERED IN GOOD CONDITION.

AD3008

AD3008 STATION RECOVERY (2001)

AD3008

AD3008'RECOVERY NOTE BY G.C.Y., INCORPORATED 2001

AD3008'RECOVERED AS DESCRIBED.

*** retrieval complete.

Elapsed Time = 00:00:02