

Identification_Information:

Citation:

Citation_Information:

**Mike J. Bartholomew
Biscayne Engineering**

Originator: Mike J. Bartholomew
Publication_Date: Unpublished material
Publication_Time: Unknown
Title: East Coast Aquifer Monitoring Wells (M1274)
Edition: 1.0
Series_Information:
Publication_Information:
Larger_Work_Citation:
Citation_Information:
Series_Information:
Publication_Information:

Description:

Purpose

Abstract: East Coast Aquifer Monitoring Wells (M1274)
Purpose:

To establish elevations on a disc set adjacent to the well and provide the results in NAVD-88 format in accordance with the CERP height modernization program.

Supplemental_Information:

Access to site is gained by heading South from the intersection between Martin Hwy (SR-714) and Citrus Blvd. (SR-76A). Pass the I-95 overpass, and it will be on the left side of the road next to the driveway of house #6807.

Time_Period_of_Content:

Survey Date

Time_Period_Information:

Single_Date/Time:

Range_of_Dates/Times:

Beginning_Date: 20060111

Ending_Date: 20060111

Multiple_Dates/Times:

Currentness_Reference: Date and Time Range of Field/Office Work

Status:

Progress: Complete

Maintenance_and_Update_Frequency: Unknown

Spatial_Domain:

Bounding_Coordinates:

West_Bounding_Coordinate: -080° 19' 09"

East_Bounding_Coordinate: -080° 19' 09"

North_Bounding_Coordinate: +27° 07' 23"

South_Bounding_Coordinate: +27° 07' 23"

Keywords:

Theme:

Theme_Keyword_Thesaurus: None

Theme_Keyword: Well Site

Theme_Keyword: MARTIN

Theme_Keyword: M1274

Place:

Place_Keyword_Thesaurus: None

Place_Keyword: East Coast Aquifer Monitoring Wells (M1274)

Place_Keyword: Martin County, Florida

Place_Keyword: Florida

Place_Keyword: Sec. 34 , Twp. 38S, Rge 40E

Stratum:

Temporal:

Access_Constraints: None

Use_Constraints: None

Point_of_Contact:

Contact_Information:

Contact_Person_Primary:

Contact_Person: Elvie Ebanks

Contact_Organization: South Florida Water Management

**Elvie Ebanks
SFWMD**

District

Contact_Organization_Primary:

Contact_Position: Project Manager

Contact_Address:

Address_Type: mailing and physical address

Address: 3301 Gun Club Road

City: West Palm Beach

M1274.gen
State_or_Province: FL
Postal_Code: 33406
Country: USA
Contact_Voice_Telephone: (561) 753-2400 x4717
Contact_Facsimile_Telephone: (561) 791-4093

Security_Information:

Cross_Reference:

Citation_Information:

Series_Information:

Publication_Information:

Data_Quality_Information:

Attribute_Accuracy:

Attribute_Accuracy_Report:

Equipment Used

This Survey was prepared using GPS and Leveling instruments. The horizontal location of the well was established using GPS. The vertical data was collected using level Wild NA-2. Coordinates are based on the Florida State Plane Coordinate System, East Zone, NAD 83/90. Elevations based on NAVD88

Logical_Consistency_Report:

Horizontal

Horizontal data was established using NGS control points AJ5252 (GCY D10) and AJ5251 (GCY D09). Vertical data was established using NGS benchmarks AJ5629 (Z 516) and AC5386(I95 H 16). Coordinates are based on the Florida State Plane Coordinate System, East Zone, NAD 83/90. Elevations are based on NAVD88.

Completeness_Report:

Project Results

Horizontal location taken at approximate center of well.

Lat. +27°07' 24.032"

Long. -080°19' 08.030"

N 1014607.948

E 877707.655

New leveled elevations.

New site benchmark "M1274" is a standard S. F. W. M. D. brass disc in the concrete encasement for tape down well.

Disc elevation is 20.57' (NAVD88).

elevation is 22.04' (NGVD29).

Top of pipe elevation is 21.04' (NAVD88)

elevation is 22.51' (NGVD29).

based on NGS NAVD88 adjustment of vertical network.

Origin of NAVD88 elevation for BM "M1274" and well

"M1274" is closed bench level circuit through NGS benchmarks AJ5629 (Z516) and AC5386 (I95 H 16).

NGVD29 Elevations determined at well site vicinity by adding a constant (C) to the measured NAVD88 values.

The constant was derived by comparing the published NAVD88 value of 21.30 feet at benchmark AJ5629 with

an NGVD-29 value of 22.77 feet; per the NGS Adjustment of the CERP Geodetic Vertical Control Project, as

provided by SFWMD. C equals 22.77 feet - 21.30 feet

equals 1.47 feet. Well is situated East of Citrus Blvd.

(SR-76A) and South of I-95, Martin County, Florida. TO

REACH the well from the intersection of Martin Hwy

(SR-714) and Citrus Blvd. (SR-76A), travel South on Citrus

Bldv. (SR-76A) for 2.62 miles to the driveway for residence

6807 on the left and the benchmark on the right. Well is

a 2-1/2" diameter pipe. Top of well is 0.1 Feet beneath the

ground surface. Lying 34.8 feet South of a 4' high chain

link fence and 34.0 feet (more or less) East of the Eastern

edge of Citrus Blvd. (SR-76A). Benchmark is a brass

SFWMD disc set 34.5 feet West of the edge of pavement

of Citrus Blvd. (SR-76A) and 4.4 feet (more or less) East of

a power pole.

Positional_Accuracy:

Horizontal_Positional_Accuracy:

Horizontal

Horizontal_Positional_Accuracy_Report:

The horizontal position of the well "M1274" was established using differential GPS. NGS points AJ5252 (GCY D10) and AJ5251 (GCY D09) were used as a source

M1274.gen
of horizontal control.
Quantitative_Horizontal_Positional_Accuracy_Assessment:
Horizontal_Positional_Accuracy_Value: 1 meter
Horizontal_Positional_Accuracy_Explanation: The intended
horizontal positional accuracy for this survey is 1 meter.
Vertical_Positional_Accuracy:

Level Line

Vertical_Positional_Accuracy_Report:
A level line was run originating on NGS control point
AJ5629 (Z516) with NAVD-88 elevation, running through
well and disc "M1274" and terminated on point AC5386
(I95 H 16) in accordance with Florida Minimum Technical
Standards.
Quantitative_Vertical_Positional_Accuracy_Assessment:
Vertical_Positional_Accuracy_Value: 0.02 feet
Vertical_Positional_Accuracy_Explanation: A bench level
circuit was performed between AJ5629 (Z516) and AC5386 (I95 H 16), running through well
"M1274" in accordance with Florida Minimum Technical Standards (Chapter 61g17-6, FAC).
Length of benchmark run is 0.48 miles. Allowable error is 0.10 feet. Achieved Accuracy is
0.02 feet.

Lineage:

Source_Information:
Source_Citation:
Citation_Information:
Series_Information:
Publication_Information:
Larger_Work_Citation:
Citation_Information:
Series_Information:
Publication_Information:
Source_Time_Period_of_Content:
Time_Period_Information:
Single_Date/Time:
Range_of_Dates/Times:
Multiple_Dates/Times:

Process_Step:

Process_Description:
The horizontal work was performed using Ashtech GPS
receivers. The vertical work was performed using level
Wild N-A2.
Process_Date: 20060123
Process_Time: 09000000
Process_Contact:
Contact_Information:
Contact_Person_Primary:
Contact_Organization_Primary:
Contact_Address:

Spatial_Data_Organization_Information:

Spatial_Reference_Information:
Horizontal_Coordinate_System_Definition:
Geographic:
Planar:

Map_Projection:

Albers_Conical_Equal_Area:
Azimuthal_Equidistant:
Equidistant_Conic:
Equiangular:
General_Vertical_Near-sidereal_Perspective:
Gnomonic:
Lambert_Azimuthal_Equal_Area:
Lambert_Conformal_Conic:
Mercator:
Modified_Stereographic_for_Alaska:
Miller_Cylindrical:
Oblique_Mercator:
Oblique_Line_Point:
Orthographic:
Polar_Stereographic:
Polyconic:
Robinson:
Sinusoidal:

M1274.gen
 van_der_Grinten:
 Space_Obl i que_Mercator_(Landsat):
 Stereographi c:
 Transverse_Mercator:
 van_der_Grinten:
 Gri d_Coordi nate_System:
 Uni versal _Transverse_Mercator:
 Transverse_Mercator:
 Uni versal _Pol ar_Stereographi c:
 Pol ar_Stereographi c:
 State_PI ane_Coordi nate_System:
 Lambert_Conformal _Coni c:
 Transverse_Mercator:
 Obl i que_Mercator:
 Obl i que_Li ne_Poi nt:
 Pol yconi c:
 ARC_Coordi nate_System:
 Equi rectangul ar:
 Azi muthal _Equi di stant:
 Local _PI anar:
 PI anar_Coordi nate_I nformati on:
 Coordi nate_Representati on:
 Di stance_and_Beari ng_Representati on:
 Local :
 Geodeti c_Model :
 Verti cal _Coordi nate_System_Defi ni ti on:
 Al ti tude_System_Defi ni ti on:
 Depth_System_Defi ni ti on:
 Enti ty_and_Attri bute_I nformati on:
 Detai led_Descri pti on:
 Enti ty_Type:
 Attri bute:
 Attri bute_Domai n_Val ues:
 Attri bute_Val ue_Accuracy_I nformati on:
 Overvi ew_Descri pti on:
 Di stri buti on_I nformati on:
 Di stri butor:
 Contact_I nformati on:
 Contact_Person_Pri mary:
 Contact_Organi zati on_Pri mary:
 Contact_Address:
 Standard_Order_Process:
 Di gi tal _Form:
 Di gi tal _Transfer_I nformati on:
 Di gi tal _Transfer_Opti on:
 Onl i ne_Opti on:
 Computer_Contact_I nformati on:
 Network_Address:
 Di al up_I nstructi ons:
 OffLi ne_Opti on:
 Recordi ng_Capaci ty:
 Avai l abl e_Ti me_Peri od:
 Ti me_Peri od_I nformati on:
 Si ngl e_Date/Ti me:
 Range_of_Dates/Ti mes:
 Mul ti pl e_Dates/Ti mes:
 Metadata_Reference_I nformati on:
 Metadata_Date: 20060123
 Metadata_Contact:
 Contact_I nformati on:
 Contact_Person_Pri mary:
 Contact_Person: Mi ke J. Barthol omew
 Contact_Organi zati on: Bi scayne Engi neeri ng Company, I nc.
 Contact_Organi zati on_Pri mary:
 Contact_Posi ti on: Project Surveyor
 Contact_Address:
 Address_Type: mai l i ng and physi cal address
 Address: 529 W. Fl agler Street
 Ci ty: Mi ami
 State_or_Provi nce: FL

M1274.gen
Postal_Code: 33130
Country: USA
Contact_Voice_Telephone: (305) 324-7671
Contact_Facsimile_Telephone: (305) 324-0809
Contact_Electronic_Mail_Address: mi keb@bi scayneengi neeri ng. com
Hours_of_Service: 8:00 AM to 5:00 PM EST
Metadata_Standard_Name: FGDC Content Standards for Digital Geospatial Metadata
Metadata_Standard_Version: 1.0
Metadata_Time_Convention: Local time
Metadata_Security_Information:

M-1274



Biscayne Engineering Company, Inc.

Date of Photo: 01-15-06

View: Looking North. BM "M1274 2006", Well "M1274"

M-1274



Biscayne Engineering Company, Inc.
Date of Photo: 01-15-06
View: Looking Northeast. Well M-1274.

M-1274



Biscayne Engineering Company, Inc.
Date of Photo: 01-15-06
View: Looking East. Front of driveway.

M-1274



WELL M1274

Biscayne Engineering Company, Inc.
Date of Photo: 01-15-06
View: Well M-1274

M-1274



Biscayne Engineering Company, Inc.
Date of Photo: 01-15-06
View: Well M-1274

M-1274



WELL M1274

**Top of Pipe Elev. =
21.04' (NAVD-88)
22.51' (NGVD-29)**

**Biscayne Engineering Company, Inc.
Date of Photo: 01-15-06
View: Well M-1274**

M-1274



Biscayne Engineering Company, Inc.
Date of Photo: 01-15-06
View: Northwest. BM "M1274 2006"

M-1274



BM "M1274 2006"

Biscayne Engineering Company, Inc.
Date of Photo: 01-15-06
View: Looking West. BM "M1274 2006".

M-1274

BM "M1274 2006"

Elev. = 20.57' (NAVD-88)

Elev. = 22.04' (NGVD-29)



Biscayne Engineering Company, Inc.

Date of Photo: 01-15-06

View: Benchmark "M1274 2006"

M-1274

BM "M1274 2006"

Elev. = 20.57' (NAVD-88)

Elev. = 22.04' (NGVD-29)



Biscayne Engineering Company, Inc.

Date of Photo: 01-15-06

View: Benchmark "M1274 2006"

A. REDERO
T. LOPEZ
L. BALLESTEROS

#03-77616
S.F.W.M.D

"SITE - K"

12/30/05

(ESTABLISH ELEV ON
WELL M-1252)

BM

STA	BS	MEAN	HI	FS	MEAN	ELEV	ELEV
	6.930						√ 23.51
BM	5.565	5.565	29.075				
	4.200			5.780			
TP#1				4.240	4.240	24.835	√
				2.700			
	7.040						
SHAKE	5.270	5.270	30.105				
	3.500			6.740			
TP#2				5.140	5.140	24.965	√
				3.540			
	6.440						
SHAKE	4.790	4.790	29.755				
	3.140			7.010			
TP#3				5.180	5.180	24.575	√
				3.350			
	4.310						
SHAKE	3.450	3.450	28.025				
	2.590			5.395			
TP#4				3.515	3.515	24.51	√
				1.635			

DESC

NGS # AJ 8237 (A522) NAVD 88
BRASS I. IN CONC. MON.
STAMPED A 522 2001 CERP

CUT NL

CUT NL

CUT NL

CUT NL

MAG NL E W

MAG NL E W

REBAR

SAME

#03-77616

CREW

S. F. W. M. D

12/30/05

"SITE-K"

(ELEV. CONT)

STA	BS	MEAN	HI	FS	MEAN ELEV	ELEV	DESC
	10.560						
SHAKE	10.600	10.600	35.110				REBAR
	10.340						
				0.805			
TP#5				0.620	0.620	34.490	✓ WOODEN STAKE
				0.435			
	4.950						
SHAKE	3.465	3.465	37.955				✓ WOODEN STAKE
	1.980						
				14.390			
TP#6				12.470	12.470	25.485	✓ 80 D SPIKE
				10.550			
	6.370						
SHAKE	4.120	4.120	29.605				✓ 80 D SPIKE
	1.870						
				6.610			
TP#7				4.730	4.730	24.875	✓ 80 D SPIKE
				2.850			
	6.340						
SHAKE	5.190	5.190	30.065				✓ 80 D SPIKE
	4.040						
				6.030			
TP#8				4.120	4.120	25.945	✓ 80 D SPIKE
				2.210			
	7.135						
SHAKE	5.035	5.035	30.980				✓ 80 D SPIKE
	2.935						

SAME
CREW

#03-77616
S. F. W. M. D

12/30/05

" SITE - K "

(ELEV. CONT)

STA	BS	MEAN	HI	FS	MEAN	ELEV	ELEV	BM	DESC
				7.330					
TP# 9				5.385	5.385	25.595	✓		80 D SPIKE
				3.440					
	6.130								
SHAKE	4.315	4.315	29.910	✓					80 D SPIKE
	2.500								
				6.640					
TP# 10				4.835	4.835	25.075	✓		80 D SPIKE
				3.030					
	8.080								
SHAKE	6.020	6.020	31.095	✓					80 D SPIKE
	3.960								
				8.660					
TP# 11				6.370	6.370	24.725	✓		80 D SPIKE
				4.080					
	6.890								
SHAKE	4.635	4.635	29.360	✓					80 D SPIKE
	2.380								
				6.850					
TP# 12				4.515	4.515	24.845	✓		80 D SPIKE
				2.180					
	6.900								
SHAKE	4.335	4.335	29.180	✓					80 D SPIKE
	1.770								
				6.950					
TP# 13				5.010	5.010	24.170	✓		80 D SPIKE
				3.070					

A. REDERO
T. LOPEZ
A. FERNANDEZ
1/3/06

#03-77616
S.F.W.M.D.

"SITE-K"

(ELEV. CONT)

STA	BS	MEAN	HI	FS	MEAN	ELEV	ELEV	BM
	7.655							
SHAKE	5.525	5.525	29.695	✓				
	3.395							
DISC				8.855				
M-1252				6.365	6.365	23.330	✓	
				3.875				
	7.085							
SHAKE	5.975	5.975	29.305	✓				
	4.865							
WELL				7.320				
M-1252				6.115	6.115	23.190	✓	
				4.910				
	8.915							
SHAKE	6.325	6.325	29.515	✓				
	3.735							
				7.470				
TP#14				5.340	5.340	24.175	✓	
				3.210				
	6.910							
SHAKE	4.970	4.970	29.145	✓				
	3.030							
				6.860				
TP#15				4.300	4.300	24.845	✓	
				1.740				
	7.050							
SHAKE	4.715	4.715	29.560	✓				
	2.380							

DESC

80 D SPIKE

SET S.F.W.M.D DISC STAMPED M-1252 2006

"

"

TOP OF PIPE "PVC" M-1252

"

"

80 D SPIKE

80 D SPIKE

80 D SPIKE

80 D SPIKE

ASAME
CREW

#03-77616
S.F.W.M.D.

1/3/06

"SITE-K"

(ELEV. CONT)

BM

STA	BS	MEAN	HI	FS	MEAN	ELEV	ELEV	DESC
				7.090				
STP#16				4.835	4.835	24.725	✓	80 D SPIKE
				2.580				
	8.620							
SHAKE	6.330	6.330	31.055	✓				80 D SPIKE
	4.040							
				8.030				
STP#17				5.975	5.975	25.08	✓	80 D SPIKE
				3.920				
	6.760							
SHAKE	4.955	4.955	30.035	✓				80 D SPIKE
	3.150							
				6.250				
STP#18				4.440	4.440	25.595	✓	80 D SPIKE
				2.630				
	7.380							
SHAKE	5.440	5.440	31.035	✓				80 D SPIKE
	3.500							
				7.190				
STP#19				5.090	5.090	25.945	✓	80 D SPIKE
				2.990				
	6.010							
SHAKE	4.100	4.100	30.045	✓				80 D SPIKE
	2.190							
				6.320				
STP#20				5.170	5.170	24.875	✓	80 D SPIKE
				4.020				

SAME
CREW

#03-77616
S.F.W.M.D

1/3/06

"SITE-K"

(ELEV. CONT)

BM

STA	BS	MEAN	HI	FS	MEAN	ELEV	ELEV
SHAKE	6.580 4.700 2.820	4.700	29.575	✓			
TP#21				6.345 4.100 1.855	4.100	25.475	✓
SHAKE	14.030 12.110 10.19	12.110	37.585	✓			
TP#22				4.580 3.100 1.620	3.100	34.485	✓
SHAKE	1.300 1.115 0.930	1.115	35.600	✓			
TP#23				11.360 11.100 10.840	11.100	24.500	✓
SHAKE	5.550 3.670 1.790	3.670	28.170	✓			
TP#24				4.460 3.600 2.740	3.600	24.570	✓
SHAKE	6.070 4.470 2.850	4.470	29.040	✓			

2564/06

DESC

80 D SPIKE

80 D SPIKE

80 D SPIKE

WOODEN STAKE

WOODEN STAKE

REBAR

REBAR

MAG NL S W

MAG NL S W

SAME

#03-77616

CREW

S.F.W.M.D

1/3/06

"SITE-K"

(ELEV. CONT)

BM

STA	BS	MEAN	HI	FS	MEAN	ELEV	ELEV	DESC
				6.110				
TP#25				4.220	4.220	24.820	✓	CUT NL
				2.330				
	5.755							
SHAKE	3.835	3.835	28.655	✓				CUT NL
	1.915							
				5.950				
TP#26				3.870	3.870	24.785	✓	CUT NL
				1.790				
	6.170							
SHAKE	3.835	3.835	28.620	✓				CUT NL
	1.500							
				5.410				
TP#27				3.590	3.590	25.030	✓	CUT NL
				1.770				
	6.430							
SHAKE	4.520	4.520	29.550	✓				CUT NL
	2.610							
				8.880				
BM				6.820	6.820	22.730	✓	
				4.760				

NGS # AJ 8238 (B522) NAVD 88

BRASS D. IN CONC MON

STAMPED B522 2001 CERP

ERR = 0.000

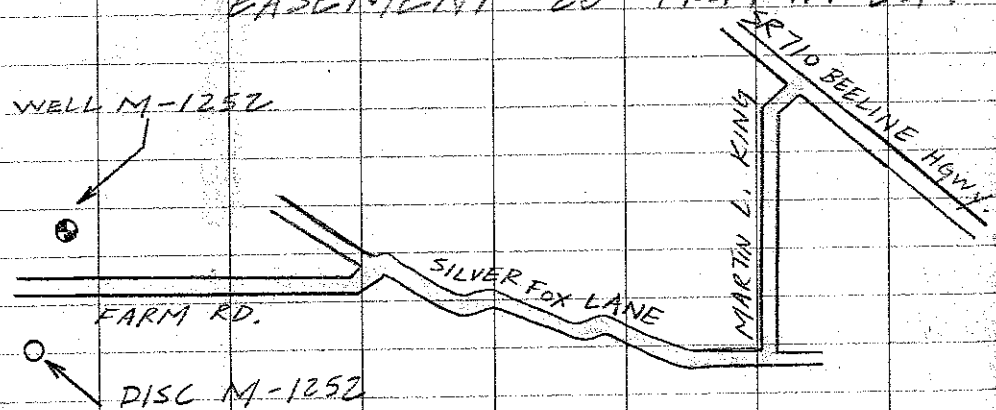
SAME
CREW

#03-77616
S.F.W.M.D

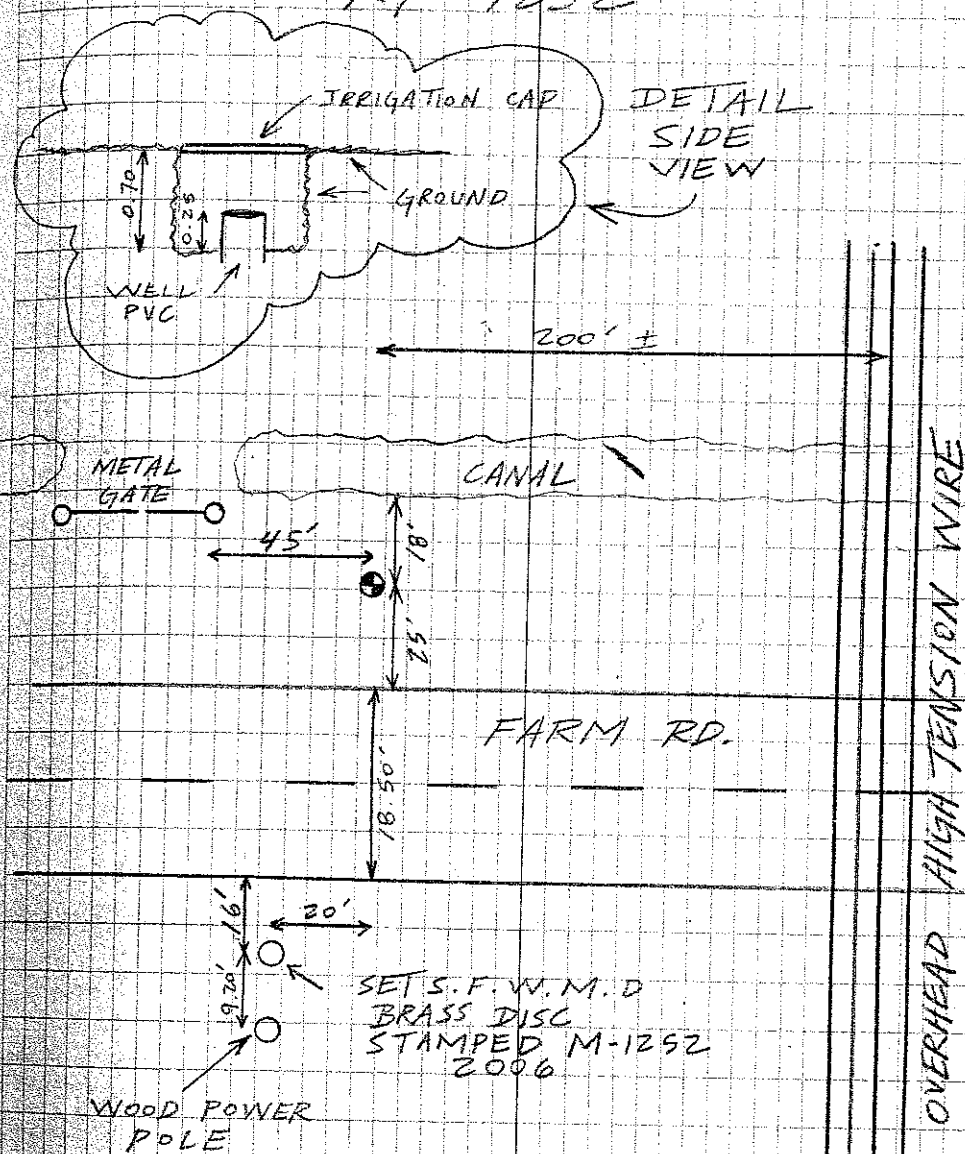
1/3/06

(SITE - K
DESCRIPTION)

DIRECTIONS - IN INDIANTOWN FROM THE
INTERSECTION OF MARTIN LUTHER
KING BLVD AND SR-710 TRAVEL
SOUTH FOR 0.7 MILES TO
THE INTERSECTION OF "MLK"
BLVD AND SILVER FOX LANE
TURN RIGHT AND TRAVEL
WEST FOR 1.7 MILES TO
THE FORK IN THE ROAD OF
SILVER FOX AND FARM RD
TURN LEFT AND TRAVEL WEST
ON FARM RD. FOR 2.3 MILES
TO THE WELL ON YOUR RIGHT
ON THE NORTHERN ROADSIDE
EASEMENT 20' FROM N. EOP.



2564/08
SKETCH OF WELL SITE
M-1252



SAME
CREW

#03-77616
S.F.W.M.D

1/3/06

"SITE - L"

(ESTABLISH ELEV.
ON WELL SITE
M-1085)

STA	BS	MEAN	HI	FS	MEAN	ELEV	BM ELEV
	6.950						
BM	5.560	5.560	36.640	✓			31.080 ✓
	4.170						
				5.050			
TP#1				3.625	3.625	33.015	✓
				2.200			
	6.090						
SHAKE	4.165	4.165	37.180	✓			
	2.240						
				11.160			
TP#2				9.320	9.320	27.860	✓
				7.480			
	5.680						
SHAKE	3.640	3.640	31.500	✓			
	1.600						
				8.350			
TP#3				6.220	6.220	25.280	✓
				4.090			
	6.335						
SHAKE	4.285	4.285	29.565	✓			
	2.235						
				6.040			
TP#4				3.930	3.930	25.635	✓
				1.820			

DESC

NGS # AJ824Z (FS22) NAVD 88
FLANGE ENCASED ROD
STAMPED F 522 2001 CERP

CUT NL

CUT NL

60 D SPIKE

60 D SPIKE

60 D SPIKE

60 D SPIKE

60 D SPIKE

SAME
CREW#03-77616
S.F.W.M.D.

1/3/06

"SITE - L"

(ELEV. CONT)

BM

STA	BS	MEAN	HI	FS	MEAN ELEV	ELEV	DESC
-----	----	------	----	----	-----------	------	------

6.650

SHAKE

4.665

4.665

30.300

✓

60 D SPIKE

2.680

TP#5

7.820

5.715

5.715

24.585

✓

60 D SPIKE

3.610

7.010

SHAKE

5.010

5.010

29.595

✓

60 D SPIKE

3.010

TP#6

7.390

5.170

5.170

24.425

✓

60 D SPIKE

2.950

7.450

SHAKE

5.590

5.590

30.015

✓

60 D SPIKE

3.730

TP#7

6.820

4.740

4.740

25.275

✓

60 D SPIKE

2.660

6.020

SHAKE

3.875

3.875

29.150

✓

60 D SPIKE

1.730

TP#8

7.510

5.370

5.370

23.780

✓

60 D SPIKE

3.230

7.830

SHAKE

6.150

6.150

29.930

✓

60 D SPIKE

4.470

S.A. REDERO
 B. SALAZAR
 A. FERNANDEZ

#03-77616
 S.F.W.M.D

1/14/06

"SITE - L"

(ELEV. CONT)

BM

STA	BS	MEAN	HI	FS	MEAN	ELEV	ELEV	DESC
WELL M-1085				6.840 5.195	5.195	24.735	✓	TOP OF PIPE "STEEL" M-1085
	7.080			3.550				
SHAKE	5.435	5.435	30.170	✓				"
	3.790							"
DISC M-1085				6.680 5.035	5.035	25.135	✓	SET S.F.W.M.D DISC STAMPED M-1085 2006
	5.935			3.370				
SHAKE	4.295	4.295	29.430	✓				"
	2.655							"
STP# 9				7.330 5.645	5.645	23.785	✓	60 D SPIKE
	7.010			3.960				
SHAKE	4.870	4.870	28.655	✓				60 D SPIKE
	2.730							
STP# 10				5.520 3.380	3.380	25.275	✓	60 D SPIKE
	6.380			1.240				
SHAKE	4.300	4.300	29.575	✓				60 D SPIKE
	2.220							
STP# 11				7.020 5.160	5.160	24.415	✓	60 D SPIKE
				3.300				

S SAME
C CREW#03-77616
S.F.W.M.DA
1 1/4/06

"SITE - L"

(ELEV. CONT)

BM

S	STA	BS	MEAN	HI	FS	MEAN	ELEV	ELEV	DESC
		7.060							
S	SHAKE	4.840	4.840	29.255	✓				60 D SPIKE
		2.620							
					6.670				
T	TP#12				4.670	4.670	24.585	✓	60 D SPIKE
					2.670				
		7.220							
S	SHAKE	5.120	5.120	29.705	✓				60 D SPIKE
		3.020							
					6.050				
T	TP#13				4.060	4.060	25.645	✓	60 D SPIKE
					2.070				
		5.530							
S	SHAKE	3.430	3.430	29.075	✓				60 D SPIKE
		1.330							
					5.830				
T	TP#14				3.790	3.790	25.285	✓	60 D SPIKE
					1.750				
		7.720							
S	SHAKE	5.590	5.590	30.875	✓				60 D SPIKE
		3.460							
					5.550				
T	TP#15				3.010	3.010	27.865	✓	60 D SPIKE
					0.470				
		11.640							
S	SHAKE	9.685	9.685	37.550	✓				60 D SPIKE
		7.130							

S SAME
S CREVY
A
1/4/06

#03-77616
S.F.W.M.D.

"SITE - L"

(ELEV. CONT)

STA	BS	MEAN	HI	FS	MEAN ELEV	ELEV	BM	DESC
				6.590				
S TP#16				4.990	4.990	32.560	✓	CUT NL
				3.390				
	4.975							
T SHAKE	3.425	3.425	35.985	✓				CUT NL
	1.875							
				4.910				
S TP#17				3.460	3.460	32.525	✓	CUT NL
				2.010				
	5.550							
T SHAKE	4.230	4.230	36.755	✓				CUT NL
	2.910							
				5.060				
S TP#18				3.690	3.690	33.065	✓	CUT NL
				2.320				
	4.450							
T SHAKE	3.030	3.030	36.095	✓				CUT NL
	1.610							
				6.050				
S TP#19				4.540	4.540	31.555	✓	CUT NL
				3.030				
	5.095							
T SHAKE	3.875	3.875	35.430	✓				CUT NL
	2.655							
				5.740				
S TP#20				4.120	4.120	31.310	✓	CUT NL
				2.500				

SAME
CREW#03-77616
S.F.W.M.D

1/4/06

"SITE-L"

(ELEV. CONT)

BM

STA	BS	MEAN	HI	FS	MEAN	ELEV	ELEV	DESC
SHAKE	5.550 4.200 2.850	4.200	35.510	✓				CUT NL
TP#21				5.840 4.355 2.870	4.355	31.155	✓	CUT NL
SHAKE	5.250 4.010 2.770	4.010	35.165	✓				CUT NL
TP#22				5.555 4.035 2.515	4.035	31.130	✓	CUT NL
SHAKE	4.550 3.940 3.330	3.940	35.070	✓				CUT NL
BM				6.715 6.080 5.385	6.080	28.990	29.010 ✓ ✓	NGS # AJ 0241 (ES22) NAVD 88 BRASS D. IN CONC MON. STAMPED ES22 2001 CERP
							ERR=0.020	

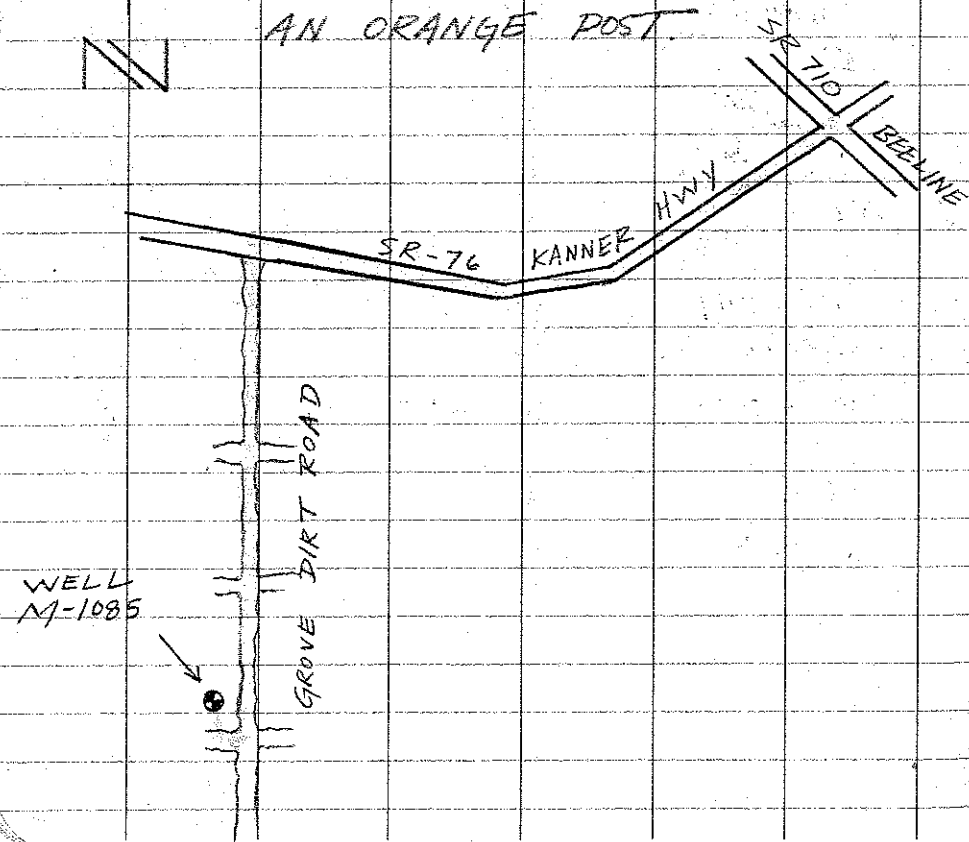
SAME
CREW

1/4/06

#03-77616
S.F.W.M.D

(SITE - L
DESCRIPTION)

DIRECTIONS - FROM THE INTERSECTION OF
SR-710 AND SR-76 TRAVEL
WEST ON SR-76 FOR 1.8 MILES
TO THE ENTRANCE OF CONSOLIDATED
CITRUS GROUP GROVE. TURN LEFT
AND TRAVEL SOUTH ON THE DIRT
RD, THROUGH THE GROVE FOR
1.1 MILES ON THE EAST SIDE
OF THE IRRIGATION DITCH. THE
WELL IS ON THE WEST SIDE
OF THE DITCH AT THE BASE OF
AN ORANGE POST.

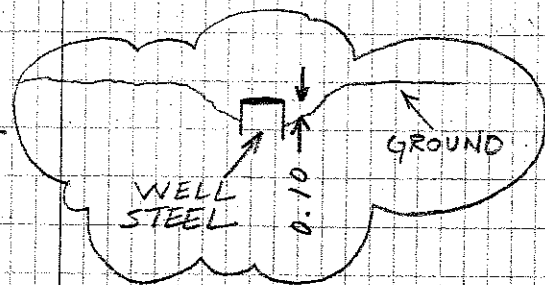


WELL
M-1085

GROVE DIRT ROAD

2564/15
SKETCH OF WELL SITE M-1085

SIDE
VIEW
DETAIL



BLUE ORANGE IRRIGATION VALVE

ORANGE PVC PIPE

WELL M-1085

SET S.F.W.M.D DISC
STAMPED M-1085 2006

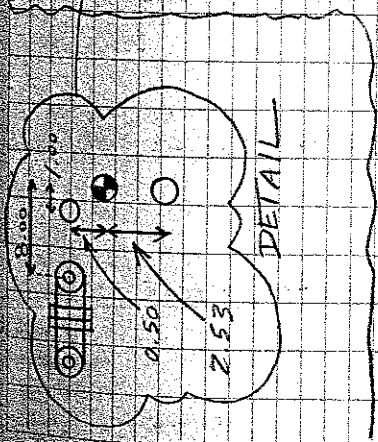
7.00

DIRT ROAD

DRAINAGE DITCH

DIRT ROAD

DIRT ROAD



DETAIL

DRAINAGE DITCH

A. FEDERO
T. LOPEZ
A. SANTANA

#03-77616
S.F.W.M.D.

"SITE-M"

1/5/06

(ESTABLISH
EVEN ON WELLS
M-1244 M-1245)

STA	BS	MEAN HI	FS	MEAN ELEV	ELEV	BM
	6.820					
BM	4.910	4.910	29.78 ✓		29.87	
	3.000					
			5.060			
TP#1			2.985	2.985	26.795 ✓	
			0.910			
	6.700					
SHAKE	4.400	4.400	31.195 ✓			
	2.100					
			6.830			
TP#2			4.630	4.630	26.565 ✓	
			2.430			
	6.880					
SHAKE	4.855	4.855	31.420 ✓			
	2.830					
			6.270			
TP#3			4.325	4.325	27.095 ✓	
			2.380			
	6.510					
SHAKE	4.675	4.675	31.770 ✓			
	2.840					
			6.400			
TP#4			4.650	4.650	27.120 ✓	
			2.900			
	7.380					
SHAKE	4.600	4.600	31.72 ✓			
	1.820					

DESC

NGS# AJ8247 (M522) NAVD 85
FLANGE ENCASED ROD
STAMPED M522 2001 CERP

CUT NL & TT

CUT NL & TT

CUT NL & TT

CUT NL & TT

CUT NL & TT

CUT NL & TT

CUT NL & TT

CUT NL & TT

SAME
CREW #03-77616
S.F.W.M.D

1/5/06 "SITE-M"
(ELEV. CONT)

STA	BS	MEAN	HI	FS	MEAN ELEV	BM ELEV	DESC
				7.380			
TP#5				4.980	4.980	26.740 ✓	CUT NL & TT
				2.580			
	9.240						
SHAKE	6.610	6.615	33.355 ✓				CUT NL & TT
	3.990						
				2.110			
TP#6				1.100	1.100	32.355 ✓	BO ID SPK
				0.09			
	8.680						
SHAKE	8.000	8.000	40.255 ✓				BO ID SPK
	7.320						
				11.780			
TP#7				9.950	9.950	30.305 ✓	CUT NL & TT
				8.120			
	7.140						
SHAKE	5.040	5.040	35.345 ✓				CUT NL & TT
	2.940						
				4.300			
TP#8				2.280	2.280	33.065 ✓	CUT NL & TT
				0.260			
	7.580						
SHAKE	5.875	5.875	38.940 ✓				CUT NL & TT
	4.170						
				6.670			
TP#9				5.090	5.090	33.850 ✓	CUT NL & TT
				3.510			

SAME #03-77616
CREW S.F.W.M.D

1/5/06 "SITE-M"
(ELEV. CONT)

STA	BS	MEAN	HI	FS	MEAN ELEV	BM ELEV	DESC	
	6.850							
SHAKE	5.305	5.305	39.185	✓			CUT NL & TT	
	3.760							
TBM#1				5.150				
				4.970	4.970	34.185	✓	SET MAG NL & W IN FRONT OF WELL
				4.790				M-1244 IN ASPH.
	4.940							
SHAKE	4.760	4.760	38.945	✓				"
	4.580							
TBM#2				4.885				
				4.720	4.720	34.225	✓	SET MAG NL & W IN FRONT OF WELL
				4.555				M-1245 IN ASPH.
	5.700							
SHAKE	5.185	5.185	39.410	✓				"
	4.670							
TP#10				6.760				
				5.570	5.570	33.840	✓	CUT NL & TT
				4.380				
	6.340							
SHAKE	4.770	4.770	38.610	✓				CUT NL & TT
	3.700							
TP#11				7.250				
				5.555	5.555	33.055	✓	CUT NL & TT
				3.860				
	4.210							
SHAKE	2.190	2.190	35.245	✓				CUT NL & TT
	0.170							

SAME #03-77616
CREW S.F.W.M.D

1/5/06 "SITE - M"
(ELEV. CONT)

STA	BS	MEAN	HI	FS	MEAN	ELEV	BM	ELEV
TP#12				7.040 4.955 2.870	4.955	30.29	✓	
SHAKE	10.670 8.770 6.870	8.770	39.060	✓				
TP#13				7.425 6.815 6.205	6.815	32.245	✓	
SHAKE	2.250 1.230 0.210	1.230	33.475	✓				
TP#14				8.410 6.490 4.570	6.490	26.985	✓	
SHAKE	5.960 4.535 3.110	4.535	31.520	✓				
TP#15				5.750 4.320 2.890	4.320	27.200	✓	
SHAKE	5.420 4.615 3.810	4.615	31.815	✓				
BM				6.860 5.830 4.800	5.830	25.985	✓	25.960

ERR = 0.025

DESC
CUT NL S, TT

CUT NL S, TT

80 D SPIKE

80 D SPIKE

CUT NL

CUT NL

CUT NL

CUT NL

NGS #A58296 (L522) NAVD 88
BRASS D IN CONC MON
STAMPED L522 2001 CERP

SAME
CREW

#03-77616
S.F.W.M.D

1/5/06

"SITE - M"
(ELEV. CONT)

STA	BS	MEAN	HI	FS	MEAN	ELEV.	BM ELEV	DESC
	4.320							
TBM#1	4.065 3.810	4.065	38.250	↓			34.185	MAG NL & W
WELL M-1244				6.300 5.940 5.580	5.940	32.310	↓	TOP OF PIPE WELL M-1244 "PVC"
SHAKE	5.920 5.555 5.190	5.555	37.865	↓				" "
WELL M-1245				4.820 4.485 4.150	4.485	33.385	↓	TOP OF PIPE WELL M-1245 "PVC"
SHAKE	5.280 4.950 4.620	4.950	38.330	↓				" "
DISC M-1244				4.980 4.675 4.370	4.675	33.655	↓	SET S.F.W.M.D DISC STAMPED M-1244 2006
SHAKE	4.560 4.255 3.950	4.255	37.910	↓				" "
TBM#2				3.905 3.685 3.465	3.685	34.225	34.225	MAG NL & W
						ERR = 0.000		

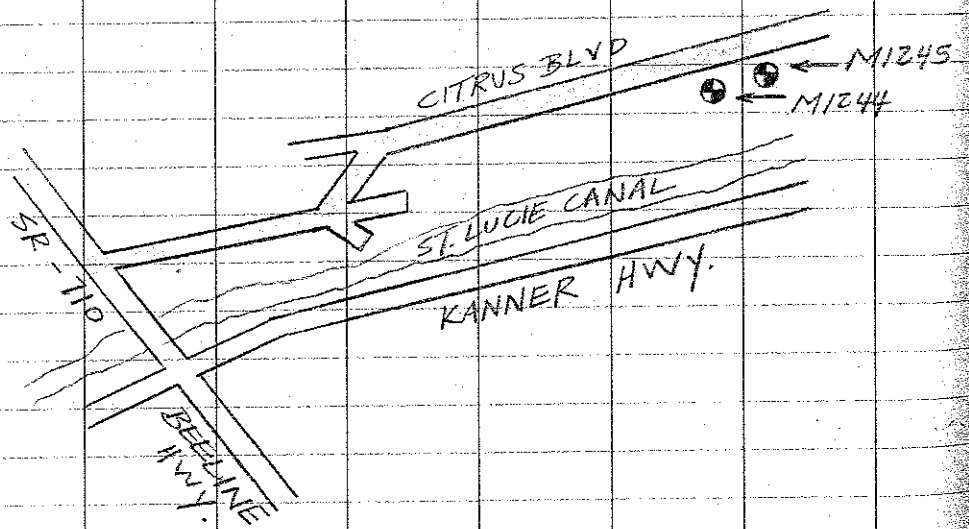
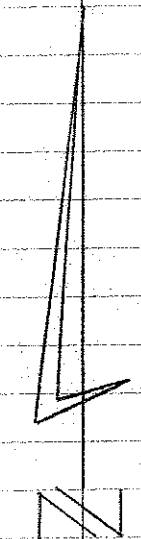
SAME
CREW

#03-77616
S.F.W.M.D.

1/5/06

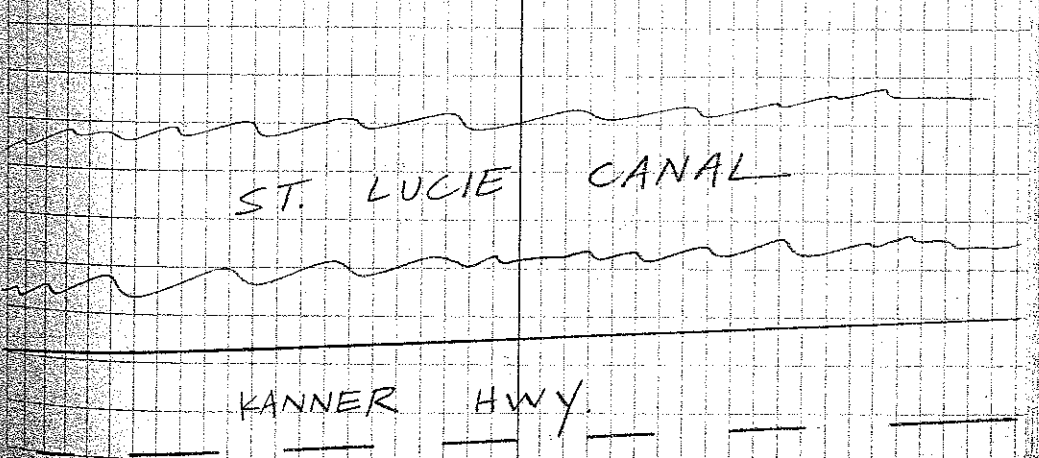
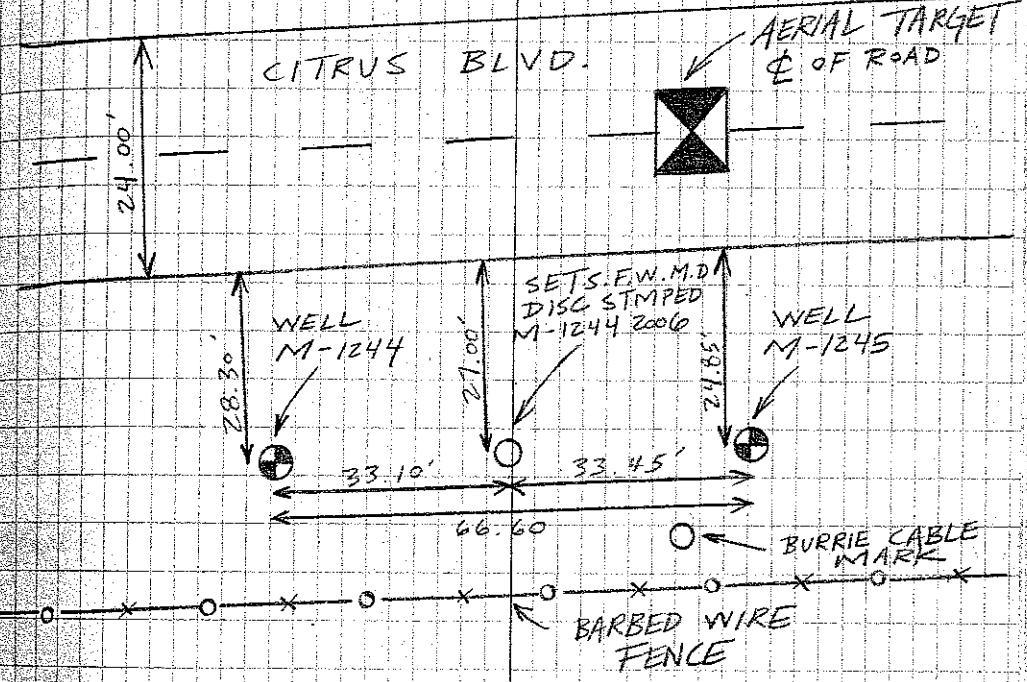
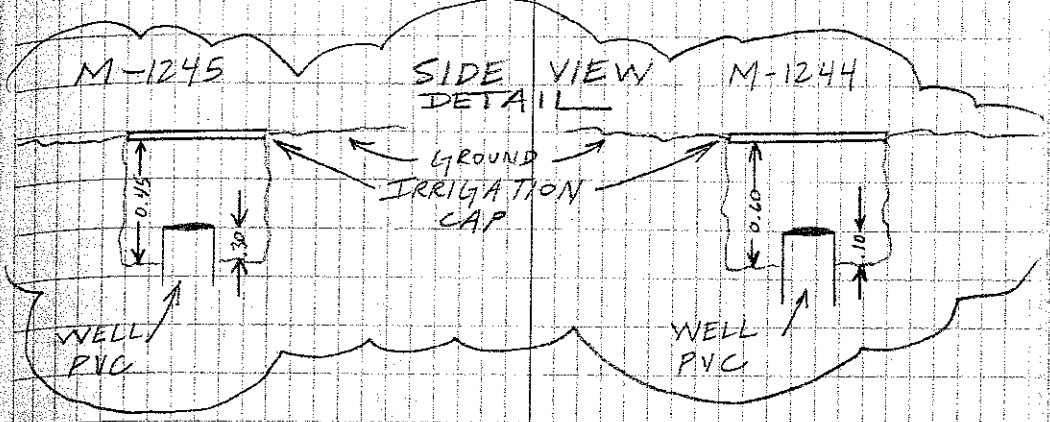
(SITE - M
DESCRIPTION)

DIRECTIONS - BY INDIANTOWN FROM THE
INTERSECTION OF SR-710
AND CITRUS BLVD. SR-726
TRAVEL EAST ON CITRUS
BLVD FOR 4 MILES. THE
WELLS ARE ON THE RIGHT SIDE
THE SOUTHERN ROADSIDE
EASEMENT ALONG FENCE
LINE ABOUT 0.3 MILES EAST
OF DRAINAGE CANAL BRIDGE.



2564 / 21

SKETCH OF WELL SITE M-1244, M-1245



SAME
CREW

#03-77616
S.F.W.M.D.

1/5/06

"SITE-N"

(ESTABLISH ELEV
ON WELL SITE
M-1236, M-1273)

STA	BS	MEAN	HI	FS	MEAN ELEV.	BM ELEV	DESC
	6.910						
BM	5.425	5.425	29.305	✓		23.88	NGS# AJ5250 (GCY DOB) NAVD 88 BRASS I. IN CONC. MON. STAMPED GCY DOB 2001
	4.040						
				7.450			
TP#1				5.480	5.480	23.825	✓ CUT NL
				3.510			
	6.630						
SHAKE	4.620	4.620	28.445	✓			CUT NL
	2.610						
				6.940			
TP#2				4.850	4.850	23.595	✓ CUT NL
				2.760			
	7.200						
SHAKE	5.000	5.000	28.595	✓			CUT NL
	2.800						
				8.640			
TP#3				6.550	6.550	22.045	✓ CUT NL
				4.460			
	7.310						
SHAKE	5.350	5.350	27.395	✓			CUT NL
	3.390						
				4.980			
TP#4				3.280	3.280	24.115	✓ CUT NL
				1.580			
	7.720						
SHAKE	5.580	5.580	29.695	✓			CUT NL
	3.440						

SAME
CREW

#03-77616
S.F.W.M.D

1/5/06

"SITE - N"

(ELEV. CONT)

STA	BS	MEAN	HI	FS	MEAN	ELEV	ELEV	BM	DESC
TP#5				7.020 4.965 2.910	4.965	24.730	✓		CUT NL
SHAKE	6.590 4.995 3.400	4.995	29.725	✓					CUT NL
TP#6				6.750 4.920 3.090	4.920	24.805	✓		CUT NL
SHAKE	6.530 4.920 3.310	4.920	29.725	✓					CUT NL
TBM#1				6.930 5.080 3.236	5.080	24.645	✓		MAG NL & TT
SHAKE	6.575 4.725 2.875	4.725	29.370	✓					MAG NL & TT
TBM#2				6.320 4.810 3.300	4.810	24.560	✓		MAG NL & TT
SHAKE	6.750 5.240 3.730	5.240	29.800	✓					MAG NL & TT
TP#7				6.610 5.000 3.390	5.000	24.800	✓		CUT NL

SAME
CREW

#03-77616
S.F.W.M.D.

1/5/06

"SITE - N"
(ELEV. CONT)

STA	BS	MEAN	HI	FS	MEAN	ELEV	BM ELEV	DESC
	6.680							
SHAKE	4.845	4.845	29.645	✓				CUT NL
	3.010							
				6.510				
TP#8				4.920	4.920	24.725	✓	CUT NL
				3.330				
	6.420							
SHAKE	4.810	4.810	29.535	✓				CUT NL
	3.200							
				8.020				
TP#9				5.430	5.430	24.105	✓	CUT NL
				2.840				
	4.840							
SHAKE	2.920	2.920	27.025	✓				CUT NL
	1.000							
				6.710				
TP#10				4.970	4.970	22.055	✓	CUT NL
				3.230				
	8.410							
SHAKE	6.430	6.430	28.485	✓				CUT NL
	4.450							
				7.200				
TP#11				4.880	4.880	23.605	✓	CUT NL
				2.560				
	6.375							
SHAKE	4.415	4.415	28.020	✓				CUT NL
	2.455							

SAME #03-77616
CREW S.F.W.M.D.

1/5/06 "SITE - N"
(ELEV. CONT)

STA	BS	MEAN	HI	FS	MEAN	ELEV.	BM ELEV	DESC
				6.330				
TP#12				4.190	4.190	23.830	✓	CUT NL
				2.050				
	6.970							
SHAKE	5.330	5.330	29.160	✓				CUT NL
	3.690							
				6.890				
TP#13				5.080	5.080	24.080	✓	CUT NL
				3.270				
	7.150							
SHAKE	5.290	5.290	29.370	✓				CUT NL
	3.430							
				6.650				
TP#14				4.530	4.530	24.840	✓	CUT NL
				2.410				
	7.180							
SHAKE	4.760	4.760	29.600	✓				CUT NL
	2.340							
				6.880				
TP#15				4.605	4.605	24.995	✓	CUT NL
				2.330				
	6.190							
SHAKE	4.100	4.100	29.095	✓				CUT NL
	2.010							

SAME
CREW

#03-77616
S.F.W.M.D

1/5/06

"SITE - N"

(ELEV CONT)

STA	BS	MEAN	HI	FS	MEAN	ELEV	EM ELEV	DESC
TP#16				6.560 4.570 2.590	4.570	24.525	✓	CUT NL
SHAKE	6.255 4.535 2.815	4.535	29.060	✓				CUT NL
BM				7.175 6.565 5.955	6.565	22.495	22.48 ✓ ERR=0.015	NGS # AJ 5627 (X 516) NAVD 88 BRASS I.D. IN CONC. MON. STAMPED X 516 2001

SAME CREW

#03-77616
S.F.W.M.D

1/5/06

"SITE-N"
(ELEV. CONT)

STA	BS	MEAN	HI	FS	MEAN	ELEV.	ELEV.	DESC.
	5.500							
TBM#1	5.385	5.385	30.030	✓			24.645	MAG NL § W
	5.270							
WELL M-1236				6.930				
				6.625	6.625	23.405	✓	TOP OF PIPE M-1236 "PVC"
				6.320				
SHAKE	7.360			✓				
	7.075	7.075	30.480					
	6.790							
WELL M-1273				7.290				
				7.000	7.000	23.480	✓	TOP OF PIPE M-1273 "PVC"
				6.710				
SHAKE	7.550			✓				
	7.260	7.260	30.740					
	6.970							
DISC M-1236				7.510				
				7.230	7.230	23.510	✓	SET S.F.W.M.D DISC STAMPED M-1236 2006
				6.950				
SHAKE	6.960			✓				
	6.670	6.670	30.180					
	6.380							
TBM#2				5.965				
				5.615	5.615	24.565	24.565	MAG NL § W
				5.265				

ERR = 0.305

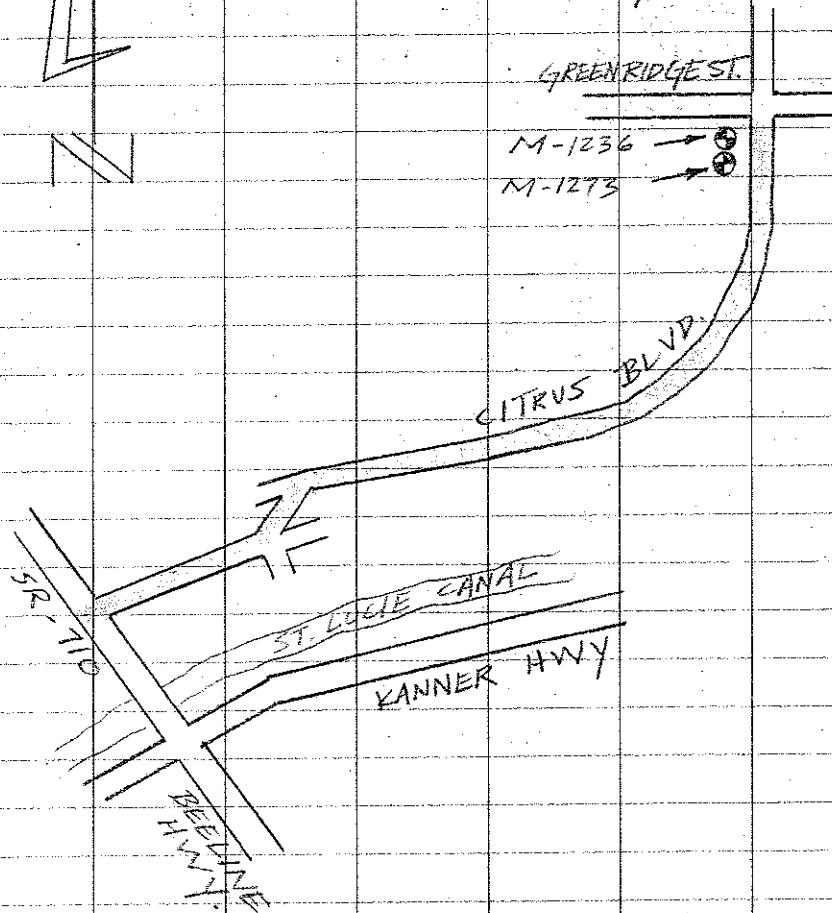
SAME
CREW

1/5/06

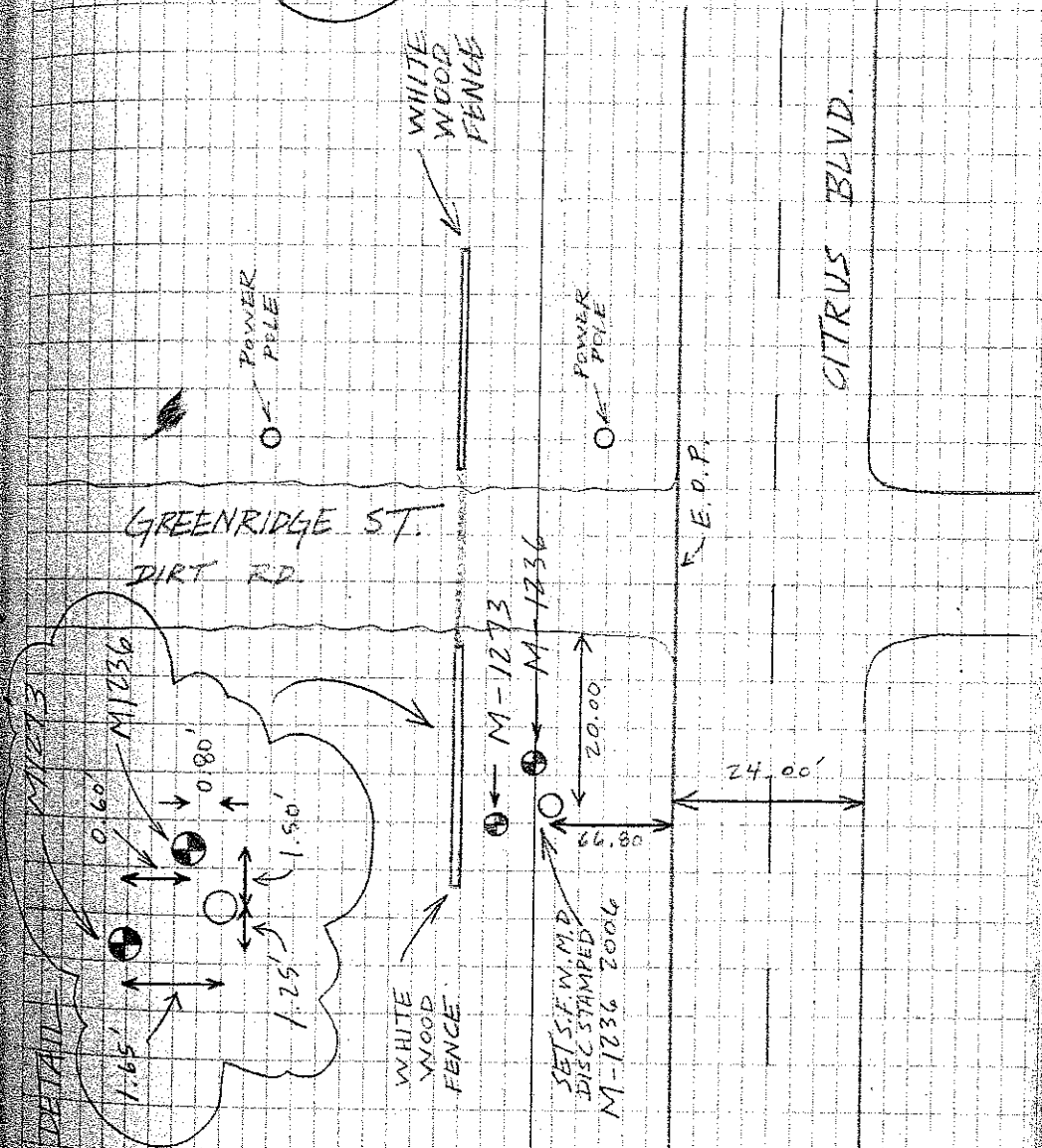
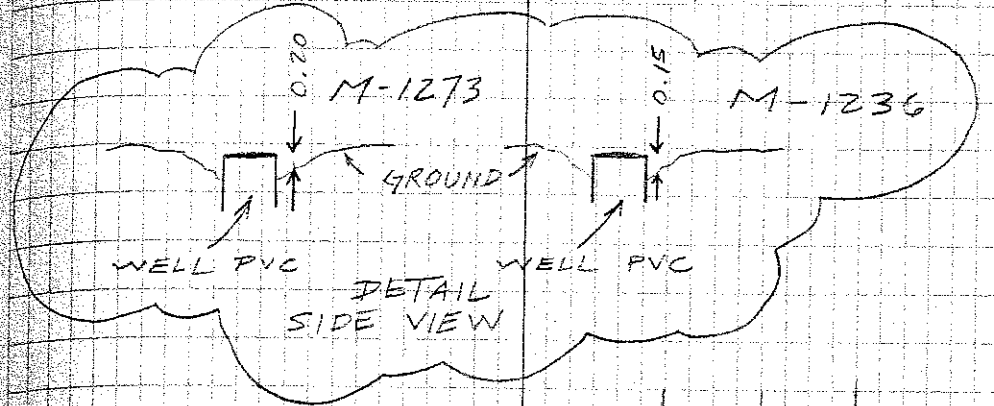
#03-77616
S.F.W.M.D.

(SITE-N
DESCRIPTION)

DIRECTIONS - BY INDIANTOWN FROM THE
INTERSECTION SR-710 AND
CITRUS BLVD. SR-726 TRAVEL
EAST AND THEN NORTH ON
CITRUS BLVD. FOR 9.9 MILES
TO GREENRIDGE ST. THE WELLS
ARE ON THE LEFT IN THE
SOUTHWEST CORNER OF THE
INTERSECTION ALONG WHITE FENCE.



2564 / 28
SKETCH OF WELL SITE M-1273, M1236



A. REDERO
T. LOPEZ
P. NAYLOR

#03-77616
S.F.W.M.D

" SITE - 0 "

1/11/06

(ESTABLISH
ELEV. ON WELL
M-1274)

STA	BS	MEAN	HI	FS	MEAN ELEV	ELEV	BM
	8.640						
BM	7.180	7.180	28.480	✓		21.30	
	5.720						
				10.050			
DISC M-1274				7.910	7.910	20.570	✓
				5.770			
	9.420						
SHAKE	7.580	7.580	28.150	✓			
	5.740						
				8.420			
WELL M-1274				7.110	7.110	21.040	✓
				5.800			
	8.260						
SHAKE	7.025	7.025	28.065	✓			
	5.790						
				2.890			
TP #1				1.680	1.680	26.385	✓
				0.470			
	12.590						
SHAKE	11.725	11.725	38.110	✓			
	10.860						
				1.285			
TP #2				0.755	0.755	37.355	✓
				0.225			

DESC
NGS # AJ5629 (2516) W
BRASS D. IN CONC. MON.
STAMPED 2516 2001

SET S.F.W.M.D DISC STAMPED M-1274 2006

TOP OF PIPE WELL M-1274 (PVC)

CUT NL

CUT NL

CUT NL

SAME
CREW

#03-77616
S.F.V.M.D

1/11/00

"SITE - 0"

(ELEV. CONT.)

STA	BS	MEAN	HI	FS	MEAN ELEV	BM ELEV
	12.480					
SHAKE	11.710	11.710	49.065	✓		
	10.940					
TP#3				2.790		
				2.180	2.180	46.885 ✓
				1.570		
	7.120					
SHAKE	6.860	6.860	53.745	✓		
	6.600					
BM				1.910		
				1.570	1.570	52.175 ✓
				1.230		52.19 ✓

ERR = 0.015V

DESC

CUT NL

CUT NL

CUT NL

NGS # AC5386 (I-95 H 16) NAVD 88
BRASS D. STAMPED BM I-95 H 16
FOOT IN CONC GUARDRAIL OF
BRIDGE

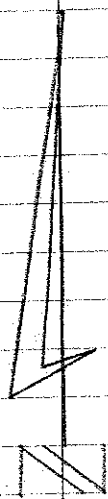
SAME
CREW

#03-77616
S.F.W.M.D

1/11/06

(SITE - 0
DESCRIPTION)

DIRECTIONS - FROM THE INTERSECTION OF
SR-714 MARTIN HWY AND
SR-76A CITRUS BLVD. TRAVEL SOUTH
ON CITRUS BLVD. FOR 2.6 MILES
TO THE WELL (JUST PASS
THE I-95 OVERPASS) ON THE
LEFT SIDE OF THE
RD. NEXT TO THE DRIVEWAY
FOR HOUSE # 6807.



SR-714 MARTIN HWY.

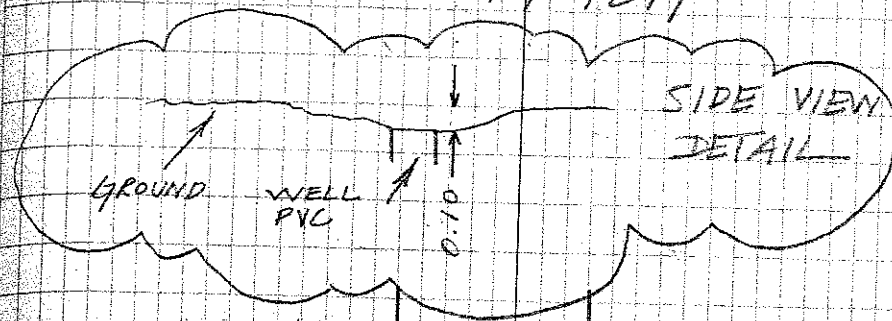
I-95

CITRUS BLVD. SR-76A

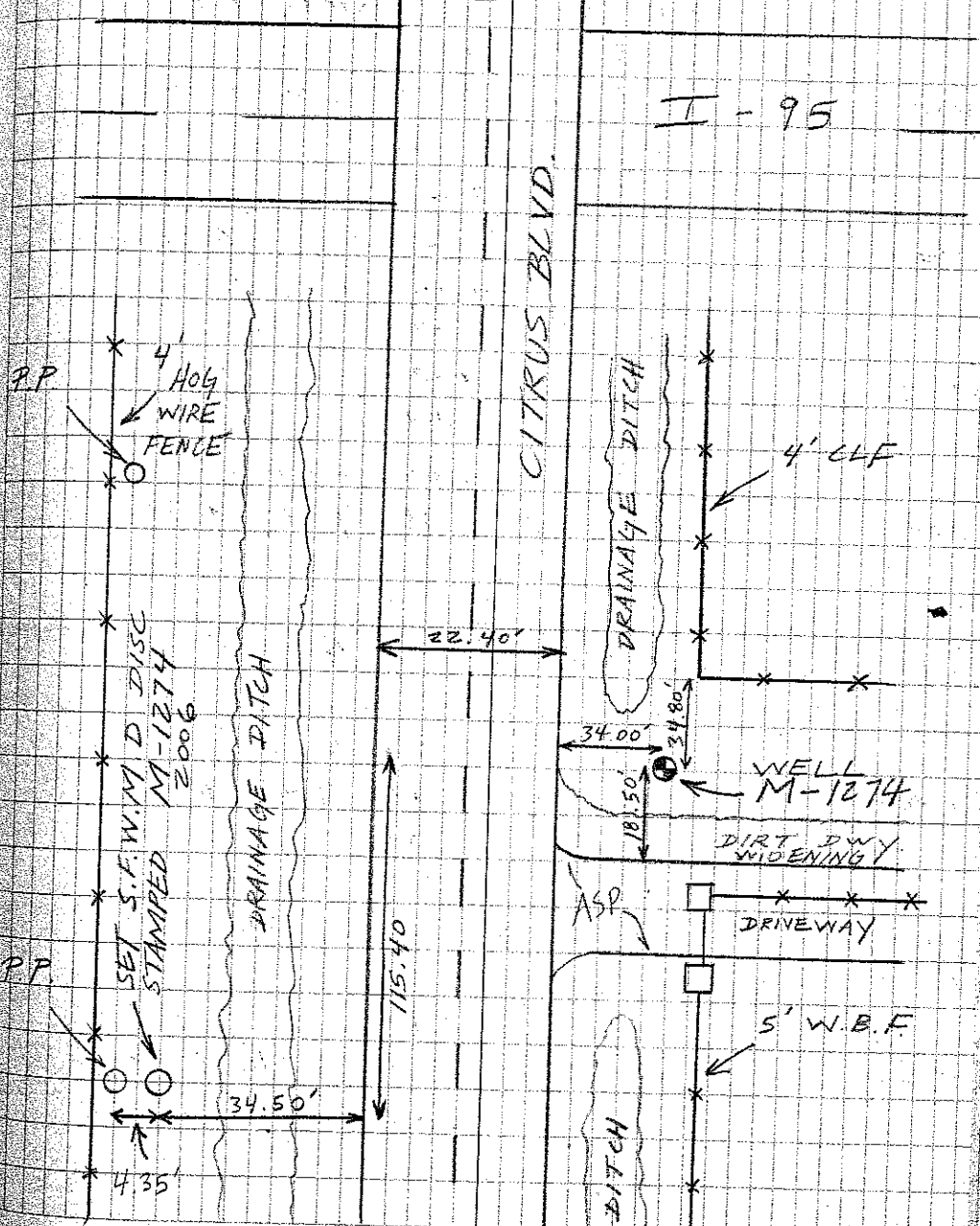
WELL
M-1274



2564 / 31
SKETCH OF WELL SITE M-1274



SIDE VIEW
DETAIL



CITRUS BLVD.

DRAINAGE DITCH

4' CLF

WELL
M-1274

DIRT DWY
WIDENING

DRIVEWAY

5' W.B.F.

DITCH

P.P.

4' HOY
WIRE
FENCE

SET S.F.W.M.D DISC
STAMPED M-1274
2006

P.P.

22.40'

106.22'

34.00'

34.80'

181.50'

115.40'

34.50'

4.35'

SAME CREW #03-77616 S.F.W.M.D

1/11/06 "SITE - P"

(ESTABLISH ELEV. ON WELL M-1037)

STA	BS	MEAN	HI	FS	MEAN	ELEV	BM ELEV
	8.920						
BM	7.980	7.980	36.550	✓			28.57
	7.040						
TP#1				7.150			
				5.750	5.750	30.800	✓
				4.350			
SHAKE	6.480						
	4.920	4.920	35.720	✓			
	3.360						
TP#2				6.630			
				4.930	4.930	30.790	✓
				3.230			
SHAKE	6.520						
	4.170	4.170	34.960	✓			
	1.820						
TP#3				6.500			
				4.435	4.435	30.525	✓
				2.370			
SHAKE	7.240						
	5.080	5.080	35.605	✓			
	2.920						
TP#4				7.770			
				5.170	5.170	30.435	✓
				2.570			
SHAKE	7.380						
	4.970	4.970	35.405	✓			
	2.560						

DESC NGS # AJ 8518 (P543) NAVD 88 FLANGE ENCASED ROD STAMPED P543 2001 CERP

CUT NL

CUT NL

CUT NL

CUT NL

CUT NL

CUT NL

CUT NL

CUT NL

SAME
CREW

#03-77616
S.F.W.M.D

1/11/00

"SITE - P"
(ELEV. CONT.)

STA	BS	MEAN	HI	FS	MEAN ELEV	ELEV	BM	DESC
				7.060				
TP#5				4.955	4.955	30.450	✓	CUT NL
				2.850				
	6.810							
SHAKE	4.455	4.455	34.905				✓	CUT NL
	2.100							
				6.635				
TP#6				4.555	4.555	30.350	✓	CUT NL
				2.475				
	6.730							
SHAKE	4.695	4.695	35.045				✓	CUT NL
	2.660							
				6.700				
TP#7				4.650	4.650	30.395	✓	CUT NL
				2.600				
	6.720							
SHAKE	4.665	4.665	35.060				✓	CUT NL
	2.610							
				6.570				
TP#8				4.770	4.770	30.290	✓	CUT NL
				2.970				
	7.430							
SHAKE	5.620	5.620	35.910				✓	CUT NL
	3.810							

SAME
CREW.

#03-77616
S.F.W.M.D

1/11/06

"SITE - P"

(ELEV. CONT)

BM

STA	BS	MEAN HI	FS	MEAN ELEV	ELEV.	DESC
-----	----	---------	----	-----------	-------	------

DISC
M-1037

8.910
7.370 7.370 29.540 ✓
5.830

SET S.F.W.M.D DISC STAMPED M-1037 2006

SHAKE 6.440
5.285 5.285 33.825 ✓
4.130

WELL
M-1037

6.030
4.640 4.640 29.185 ✓
3.250

TOP OF PIPE WELL M-1037 "PVC"

SHAKE 7.320
5.525 5.525 34.710 ✓
3.730

TP#9

6.230
4.420 4.420 30.290 ✓
2.610

CUT NL

SHAKE 6.540
4.740 4.74 35.030 ✓
2.940

CUT NL

TP#10

6.690
4.635 4.635 30.395 ✓
2.580

CUT NL

SHAKE 6.610
4.560 4.560 34.955 ✓
2.510

CUT NL

TP#11

6.630
4.600 4.600 30.355 ✓
2.570

CUT NL

SAME
CREW

#03 - 77616
S.F.V.M.D

1/11/06

" SITE - P "

(ELEV. CONT)

STA	BS	MEAN	HI	FS	MEAN ELEV	BM ELEV	DESC	
	6.555							
SHAKE	4.475	4.475	34.830	✓			CUT NL	
	2.395							
				6.730				
TP#12				4.380	4.380	30.450	✓	CUT NL
				2.030				
	6.090							
SHAKE	4.780	4.780	35.230	✓			CUT NL	
	2.670							
				7.200				
TP#13				4.785	4.785	30.445	✓	CUT NL
				2.370				
	7.655							
SHAKE	5.045	5.045	35.490	✓			CUT NL	
	2.435							
				7.100				
TP#14				4.950	4.950	30.540	✓	CUT NL
				2.800				
	6.385							
SHAKE	4.315	4.315	34.855	✓			CUT NL	
	2.245							
				6.400				
TP#15				4.050	4.050	30.805	✓	CUT NL
				1.700				
	6.690							
SHAKE	4.980	4.980	35.785	✓			CUT NL	
	3.210							

A. REDERO
T. LOPEZ
A. FERNANDEZ

#03-17616
S.F.W.M.D.
"SITE - P"

1/12/06

(ELEV. CONT)

BM

STA	BS	MEAN	HI	FS	MEAN ELEV	ELEV	DESC
TP#16				6.530 4.970 3.410	4.970	30.815	✓ CUT NL
SHAKE	7.160 5.770 4.380	5.770	36.585	✓			CUT NL
TP#17				5.810 3.780 1.750	3.780	32.805	✓ CUT NL
SHAKE	8.260 6.480 4.700	6.480	39.285	✓			CUT NL
TP#18				4.665 3.125 1.585	3.125	36.16	✓ CUT NL
SHAKE	6.985 5.245 3.505	5.245	41.405	✓			CUT NL
TP#19				8.710 7.070 5.430	7.070	34.335	✓ CUT NL
SHAKE	16.440 15.460 14.480	15.460	49.795	✓			CUT NL

SAME
CREW.

#03-77616
S.F.W.M.D

"SITE-P"

1/10/06

(ELEV. CONT)

STA	BS	MEAN	HI	FS	MEAN	ELEV	BM ELEV
				3.520			
TA#20				2.400	2.400	47.395	✓
				1.280			
	15.960						
SHAKE	14.770	14.770	62.165	✓			
	13.580						
				4.565			✓
BM				2.355	2.355	59.810	59.780
				0.145			
							ERR=0.030 ✓

DESC
CUT NL

CUT NL

I95 85 A06 RM1

NGS # AF 715B. (A06) NAVD 88
FDOT BRASS D. IN CONC GUARDRAIL
STAMPED I-95 85 A06 RM 1

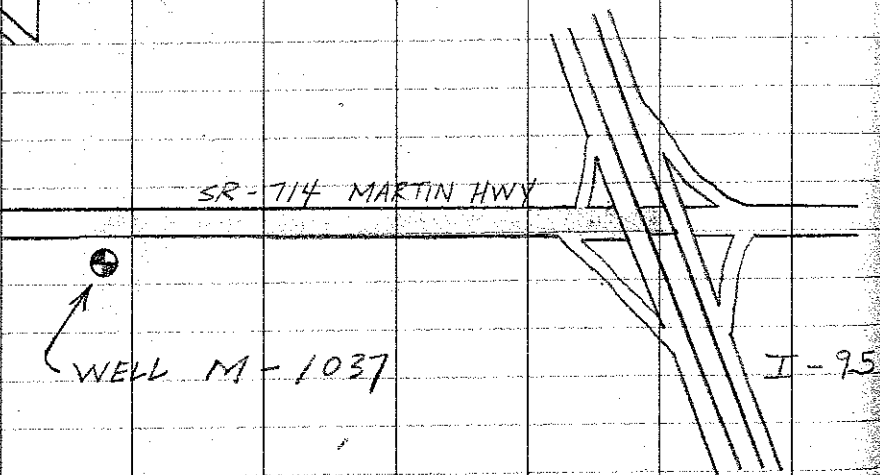
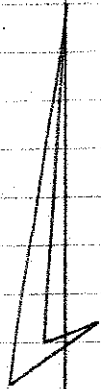
SAME
CREW

#03-77616
S.F.W.M.D

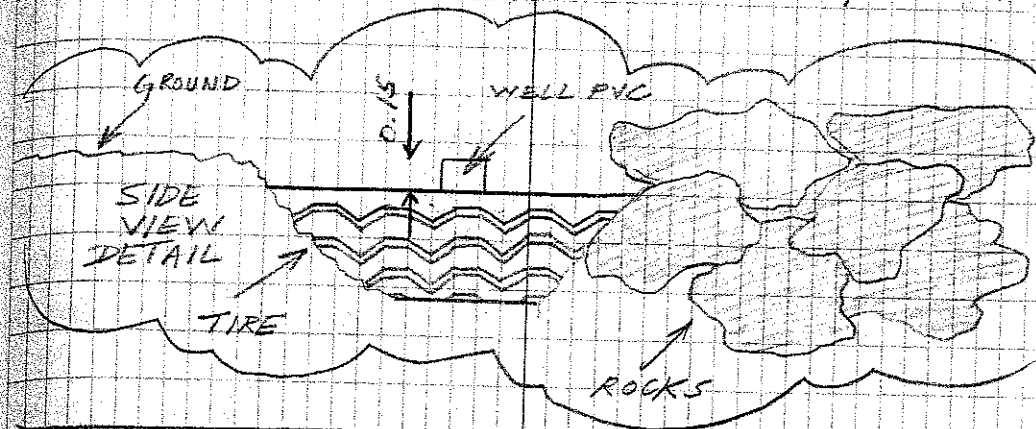
1/10/06

(SITE - P
DESCRIPTION)

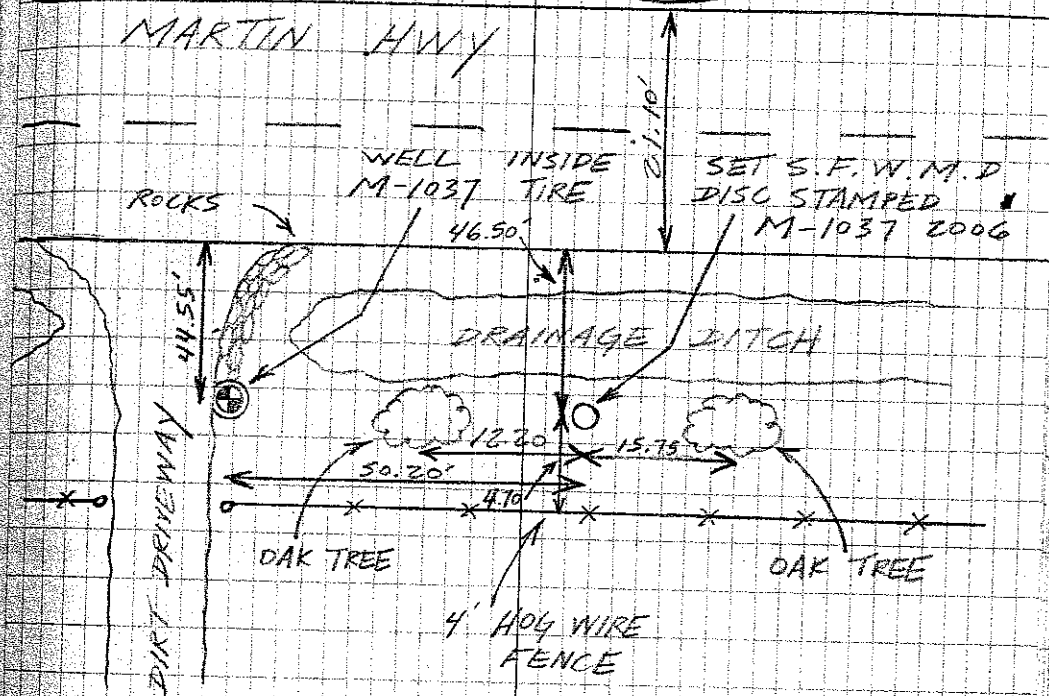
DIRECTIONS - FROM THE INTERSECTION OF
I-95 AND SR-714 MARTIN
HWY. TRAVEL WEST ON
SR-714 FOR 1.7 MILES.
TO THE WELL ON THE
LEFT SIDE OF THE RD.
NEXT TO THE DRIVEWAY
FOR HOUSE # 10100.



2564/38
SKETCH FOR WELL SITE M-1037



MARTIN HWY



SAME . #03-77616
CREW . S.F.W.M.D

1/12/06 " SITE - Q "
(ESTABLISH
ELEV ON
WELL M-1248)

STA	BS	MEAN	HI	FS	MEAN	ELEV	ELEV
	3.560						BM 43.38
BM	3.060	3.060	46.440	✓			
	2.560						
TP#1					17.600		
					17.010	17.010	29.430 ✓
					16.420		
	6.700						
SHAKE	5.315	5.315	34.745	✓			
	3.930						
TP#2					6.700		
					5.240	5.240	29.505 ✓
					3.780		
	6.500						
SHAKE	4.975	4.975	34.480	✓			
	3.450						
TP#3					6.890		
					5.310	5.31	29.170 ✓
					3.730		
	7.200						
SHAKE	5.760	5.760	34.930	✓			
	4.320						
TP#4					6.640		
					5.120	5.120	29.810 ✓
					3.600		
	6.210						
SHAKE	4.575	4.575	34.385	✓			
	2.940						

I 95 85 ALL
 NGS # AF7173 (ALL) NAVD 88
 FDOT BRASS D. IN CONC MON.
 STAMPED I 95 85 ALL

CUT NL

CUT NL

60 D SPIKE

60 D SPIKE

60 D SPIKE

60 D SPIKE

60 D SPIKE

SAME
CREW

#03-77616
S.F.W.M.D.

1/12/06

" SITE - Q "
(ELEV. CONT)

BM

STA	BS	MEAN	HI	FS	MEAN	ELEV	ELEV	DESC
				6.580				
TP#5				4.970	4.970	29.415	✓	60 D SPIKE
				3.360				
	6.500							
SHAKE	5.685	5.685	35.100	✓				60 D SPIKE
	4.870							
				5.640				
DISC M-1248				4.930	4.930	30.170	✓	SET S.F.W.M.D. DISC STAMPED M-1248 2006
				4.220				
	5.980							
SHAKE	5.270	5.270	35.440	✓				"
	4.560							
				5.890				
WELL M-1248				5.185	5.185	30.255	✓	TOP OF PIPE WELL M-1248 (PVC)
				4.480				
	5.590							
SHAKE	4.880	4.880	35.135	✓				"
	4.170							
				6.540				
TP#6				5.720	5.720	29.415	✓	60 D SPIKE
				4.900				
	6.530							
SHAKE	4.920	4.920	34.335	✓				60 D SPIKE
	3.310							
				6.160				
TP#7				4.525	4.525	29.810	✓	60 D SPIKE
				2.890				

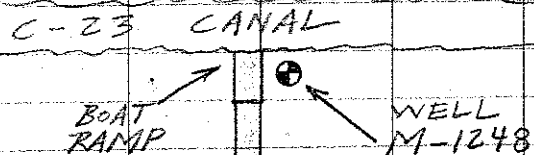
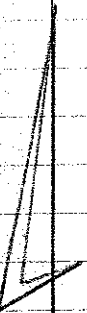
SAME
CREW

1/12/06

#03-77616
S.F.W.M.D

(SITE - Q
DESCRIPTION)

DIRECTIONS - FROM THE INTERSECTION OF
SR-714 MARTIN HWY AND
SR-76A CITRUS BLVD TRAVEL
WEST ON MARTIN HWY FOR
3.9 MILES TO THE ENTRANCE
OF COBBLESTONE. CHECK IN AT
SECURITY GATE AND FOLLOW
THE ROAD NORTH FOR 3.3 MILES
TO THE BOAT RAMP. THE WELL
IS EAST OF THE BOAT RAMP ON
THE OTHER SIDE OF THE FENCE.



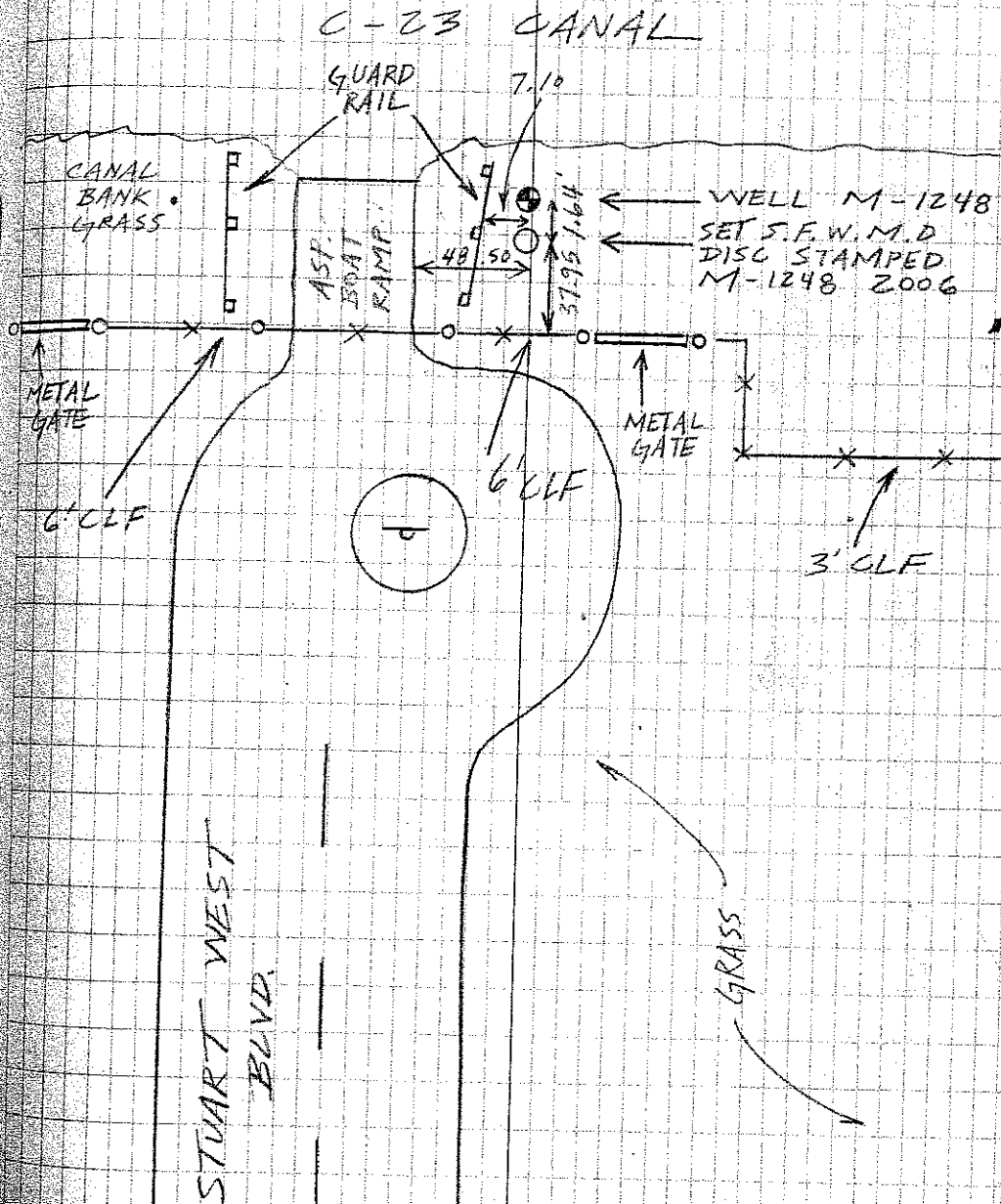
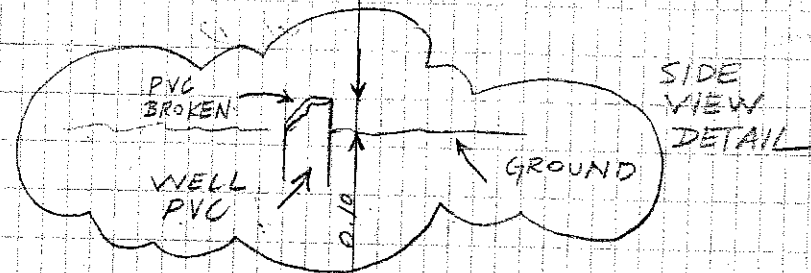
I-95

MARTIN HWY SR-714

SR-76A

CITRUS BLVD

2564 / 42
SKETCH OF WELL SITE M-1248



A. REDERO
T. LOPEZ
A. FERNANDEZ

#03-77616
S.F.W.M.D

"SITE - R"

1/13/06

(ESTABLISH
ELEV ON WELL
M-1367)

BM

STA	BS	MEAN	HI	FS	MEAN	ELEV	ELEV
	4.490						
BM	3.985	3.985	9.625	✓			5.670 ✓
	3.480						
TP#1				7.210			
				5.170	5.170	4.455	✓
				3.130			
	6.850						
SHAKE	5.125	5.125	9.580	✓			
	3.400						
TP#2				7.830			
				5.940	5.940	3.640	✓
				4.050			
	6.550						
SHAKE	4.615	4.615	8.255	✓			
	2.680						
TP#3				6.060			
				4.350	4.350	3.905	✓
				2.640			
	7.225						
SHAKE	5.475	5.475	9.380	✓			
	3.725						
TP#4				9.110			
				7.090	7.090	2.290	✓
				5.070			
	8.410						
SHAKE	6.920	6.92	9.210	✓			
	5.430						

DESC
NGS # AJ5614 (SLR 300) NAVD88
BRASS I. IN CONC OF FISHING PIER
STAMPED SLR 300 JAX 1992

CUT NL

CUT NL

CUT NL

CUT NL

CUT NL

CUT NL

CUT NL

CUT NL

SAME
CREW

#03-17616
S.F.V.M.D

1/13/06

"SITE - R"
(ELEV. CONT)

STA	BS	MEAN	HI	FS	MEAN	ELEV	ELEV	BM
TP# 5				7.350				
				5.380	5.380	3.830		
				3.410				
SHAKE	4.090							
	2.220	2.220	6.050					
	0.350							
TP# 6				4.860				
				2.870	2.870	3.180		
				0.880				
SHAKE	7.710							
	6.030	6.080	7.260					
	4.250							
TP# 7				7.460				
				5.785	5.785	3.475		
				4.110				
SHAKE	7.000							
	5.435	5.435	8.910					
	3.870							
TBM# 1				7.450				
				5.925	5.925	2.985		
				4.400				
SHAKE	7.740							
	6.560	6.560	9.545					
	5.380							
TBM# 2				7.9050				
				6.575	6.575	2.970		
				5.245				

DESC

CUT NL

CUT NL

CUT NL

CUT NL

CUT NL

CUT NL

MAG NL & TT

MAG NL & TT

MAG NL & TT

SAME #03-77616
CREW S.F.W.M.D

1/13/06 "SITE - R"
(ELEV. CONT)

STA	BS	MEAN	HI	FS	MEAN	ELEV.	BM ELEV.	DESC
	7.500							
SHAKE	5.825	5.825	8.795	✓				MAG NL $\frac{1}{2}$ TT
	4.150							
TP#8				6.890				
				5.320	5.320	3.475	✓	CUT NL
				3.750				
	7.380							
SHAKE	5.705	5.705	9.180	✓				CUT NL
	4.030							
TP#9				7.830				
				6.000	6.000	3.180	✓	CUT NL
				4.170				
	4.950							
SHAKE	2.960	2.960	6.140	✓				CUT NL
	0.970							
TP#10				4.180				
				2.310	2.310	3.830	✓	CUT NL
				0.440				
	7.180							
SHAKE	5.210	5.210	9.040	✓				CUT NL
	3.240							
TP#11				8.230				
				6.745	6.745	2.295	✓	CUT NL
				5.260				
	9.060							
SHAKE	7.045	7.045	9.340	✓				CUT NL
	5.030							

SAME CREW #03-17616 S.F.W.M.D

1/13/06 "SITE-R" (ELEV. CONT)

STA	BS	MEAN	HI	FS	MEAN	ELEV.	BM ELEV
TP#12				7.170 5.425 3.680	5.425	3.915	✓
SHAKE	6.015 4.305 2.595	4.305	8.220	✓			
TP#13				6.500 4.570 2.640	4.570	3.650	✓
SHAKE	7.760 5.870 3.980	5.870	9.520	✓			
TP#14				6.770 5.050 3.330	5.050	4.470	✓
SHAKE	7.680 5.615 3.550	5.615	10.085	✓			
TP#15				4.910 4.430 3.950	4.430	5.655	✓
SHAKE	6.500 5.070 3.640	5.070	10.725	✓			
BM				7.690 5.230 2.770	5.230	5.495	5.480 ✓

DESC
 CUT NL
 CUT NL
 CUT NL
 CUT NL
 CUT NL
 BRASS D.
 BRASS D.
 NGS # AF 7129 (SLR 39) NAVD 88
 BRASS D. IN CONC OF FISHING PIER
 STAMPED SLR 39 1992 JAX FL

SAME CREW #03-77616 S.F.W.M.D.

1/13/06 "SITE-R" (ELEV. CONT)

STA	BS	MEAN	HI	FS	MEAN ELEV	ELEV	BM ELEV	DESC
	5.850							
TBM# 1	5.690	5.690	8.675				2.985	MAG NL & TI
	5.530							
WELL M-1267				4.550				
				4.270	4.270	4.405		TOP OF PIPE WELL M-1267 (PVC)
				3.990				
SHAKE	4.590							
	4.245	4.245	8.65					
	3.900							
DISC M-1267				5.645				
				5.065	5.065	3.585		SET S.F.W.M.D DISC STAMPED M-1267 2006
				4.485				
SHAKE	5.840							
	5.260	5.260	8.845					
	4.680							
TBM# 2				6.140				
				5.870	5.870	2.975	2.97	MAG NL & TI
				5.600				
						ERROR	0.005	

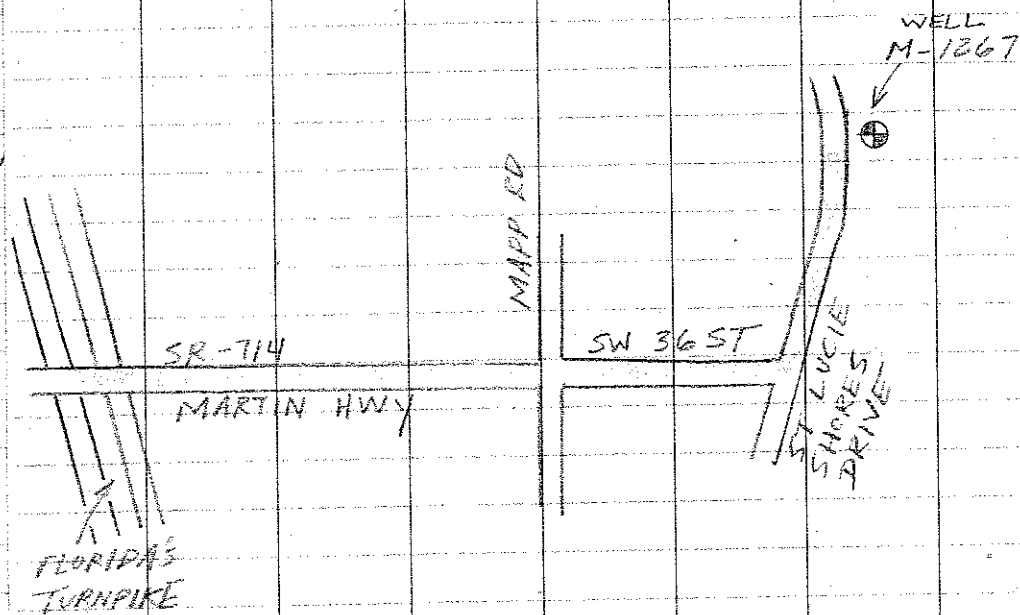
SAME
CREW

1/13/06

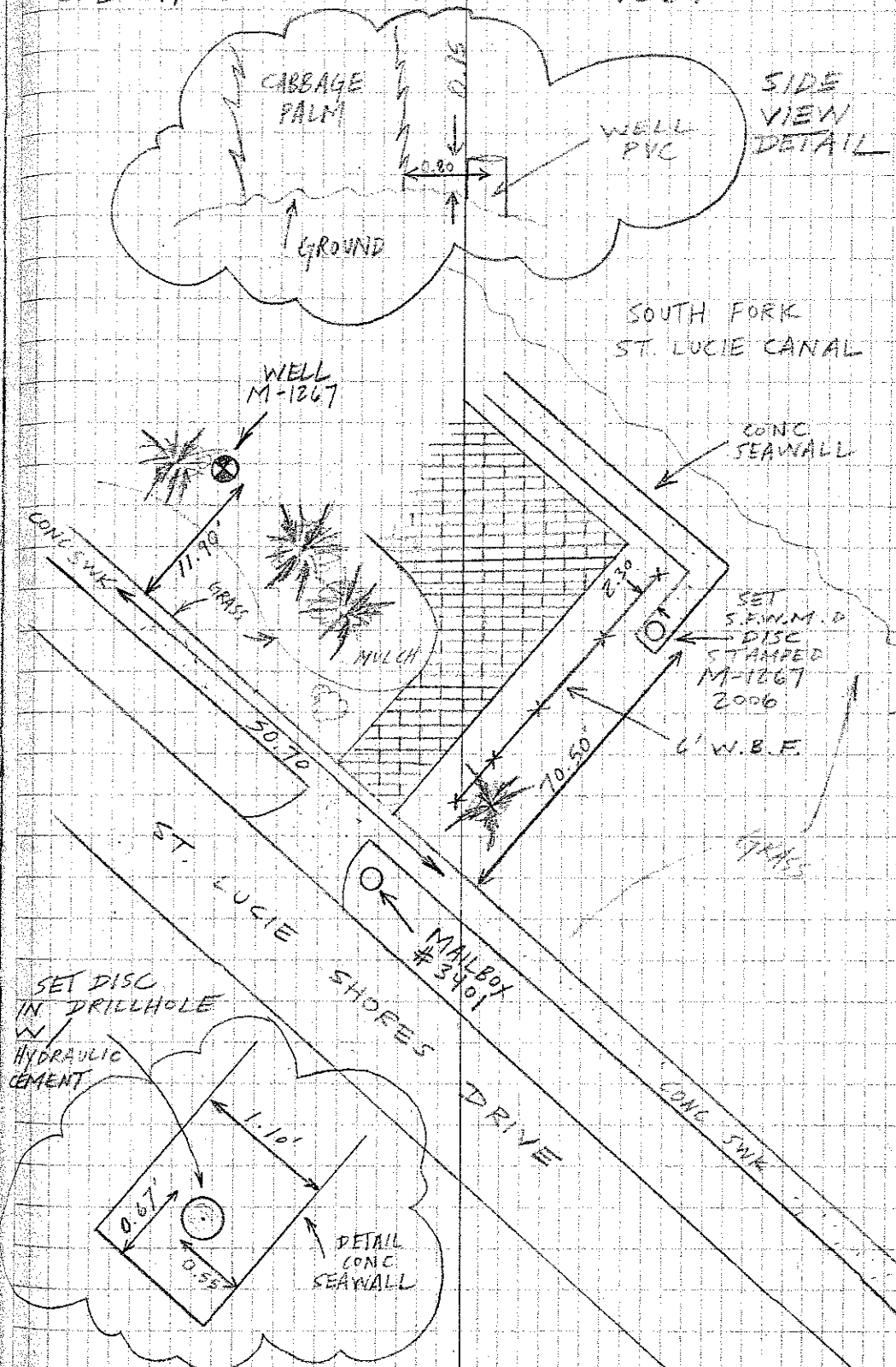
#03-77616
S.F.W.M.D.

(SITE - R
DESCRIPTION)

DIRECTIONS - FROM THE INTERSECTION OF
FLORIDA'S TURNPIKE AND SR-714
MARTIN HWY TRAVEL EAST
ON MARTIN HWY FOR 2.1 MILES
UNTIL MARTIN HWY ENDS AND
BECOMES SW 36 ST. CONTINUE
TRAVELING EAST FOR ANOTHER
0.6 MILES TO THE INTERSECTION
OF SW 36 ST AND ST LUCIE
DRIVE. TURN LEFT AND TRAVEL
FOR 0.1 MILES ON ST LUCIE
SHORES DRIVE AS THE STREET
CURVES TOWARD THE NORTH
TO THE WELL ON YOUR RIGHT
IN FRONT OF HOUSE # 3401.



2564 / 48
SKETCH OF WELL SITE M-1267



A. REDEKO
T. LOPEZ
A. LOPEZ

#03-77616
S.E. W.M.D.

"SITE - 5"

4/17/06

(ESTABLISH
ELEV. ON WELL
M-1043)

STA	BS	MEAN	HI	FS	MEAN	ELEV	ELEV	BM
	13.170							
BM	11.865	11.865	26.715	✓			14.85	✓
	10.560							
TP#1				1.220				
				0.780	0.780	25.935	✓	
				0.340				
	11.350							
SHAKE	10.410	10.410	36.345	✓				
	9.470							
TP#2				7.150				
				6.0350	6.035	30.310	✓	
				4.920				
	11.480							
SHAKE	10.640	10.640	40.950	✓				
	9.800							
TP#3				11.920				
				10.730	10.730	30.220	✓	
				9.540				
	1.460							
SHAKE	0.860	0.860	31.080	✓				
	0.260							
TP#4				9.380				
				8.320	8.320	22.760	✓	
				7.260				
	3.300							
SHAKE	2.580	2.580	25.340	✓				
	1.860							

DESC
NGS #AJ5264 (GCY DZZ) NAYD 88
BRASS D. IN CONC MON.
STAMPED GCY DZZ 2001

CUT NL

CUT NL

CUT NL

CUT NL

CUT NL

CUT NL

CUT NL

CUT NL

SAME CREW #03-77616 S.F.W.M.D.

1/17/06 " SITE - 5 " (ELEV. CONT)

STA	BS	MEAN	HI	FS	MEAN	ELEV	ELEV	BM	DESC
TBM#1				3.860 2.865 1.870	2.865	22.475	✓		MAG NL & TT
SHAKE	4.180 3.195 2.210	3.195	25.670	✓					MAG NL & TT
TBM#2				4.120 3.120 2.120	3.120	22.550	✓		MAG NL & TT
SHAKE	3.780 2.770 1.760	2.770	25.320	✓					MAG NL & TT
TP#5				3.270 2.560 1.950	2.560	22.760	✓		CUT NL
SHAKE	9.300 8.240 7.180	8.240	31.000	✓					CUT NL
TP#6				1.380 0.780 0.180	0.780	30.220	✓		CUT NL
SHAKE	12.400 11.220 10.040	11.220	41.440	✓					CUT NL
TP#7				11.960 11.130 10.300	11.130	30.310	✓		CUT NL

A. REDERO
T. LOPEZ
A. LOPEZ

#03 - 77616
S.F.W.M.D.

1/18/06

"SITE - S"
(ELEV. CONT)

STA	BS	MEAN	HI	FS	MEAN	ELEV	BM ELEV	DESC
	7.290							
SHAKE	6.175	6.175	36.485	✓				CUT NL
	5.060							
				11.490				
TP#8				10.550	10.550	25.935	✓	CUT NL
				9.610				
	1.760							
SHAKE	1.320	1.320	27.255	✓				CUT NL
	0.880							
				13.450				
TP#9				12.155	12.155	15.100	✓	CUT NL
				10.860				
	3.670							
SHAKE	2.155	2.155	17.255	✓				CUT NL
	0.640							
				8.540				
TP#10				6.495	6.495	10.760	✓	CUT NL
				4.450				
	11.530							
SHAKE	9.985	9.985	20.745	✓				CUT NL
	8.440							
				2.760				
TP#11				1.760	1.760	18.985	✓	CUT NL
				0.760				
	10.850							
SHAKE	9.100	9.100	28.085	✓				CUT NL
	7.250							

SAME
CREW

#03-77616
S.F.W.M.D

1/18/06

"SITE - S"
(ELEV. CONT)

STA	BS	MEAN	HI	FS	MEAN	ELEV	BM ELEV
				8.590			
TP#12				7.370	7.370	20.715	✓
				6.150			
	5.460						
SHAKE	4.620	4.620	25.335	✓			
	3.780						
				9.545			✓
				8.645	8.645	16.690	16.687
BM				7.745			
						ERR=0.010	

DESC

CUT NL

CUT NL

NGS # AJ5265 (GCY D23) NAVD 88
BRASS I. IN CONC MON.
STAMPED GCY D23 2001

SAME
CREW

#03-77616
S.F.W.M.D.

1/18/06

"SITE - 5"
(ELEV. CONT)

STA	BS	MEAN	HI	FS	MEAN ELEV	BM ELEV
	5.620					
TRM#1	5.405 5.190	5.405	27.880	✓		22.475
				1.930		
WELL M-1043				1.630 1.430	1.630	26.250 ✓
	2.430					
SHAKE	2.360 2.270	2.350	28.600	✓		
				6.490		
DISC M-1043				6.420 6.350	6.420	22.180 ✓
	7.140					
SHAKE	8.945 8.750	8.945	31.125	✓		
				8.825		
TRM#2				8.575 8.325	8.575	22.550 ✓ 22.550 ✓ ERR = 0.000 ✓

DESC

MAG NL & TT
TOP OF PIPE WELL M-1043 (PVC)
"
"
SET S.F.W.M.D DISC STAMPED M-1043 2006
"
"

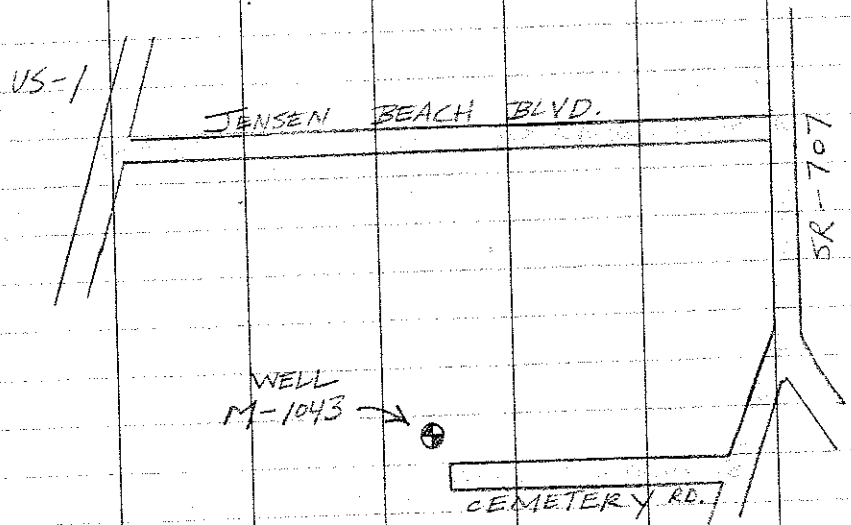
SAME CREW

1/18/06

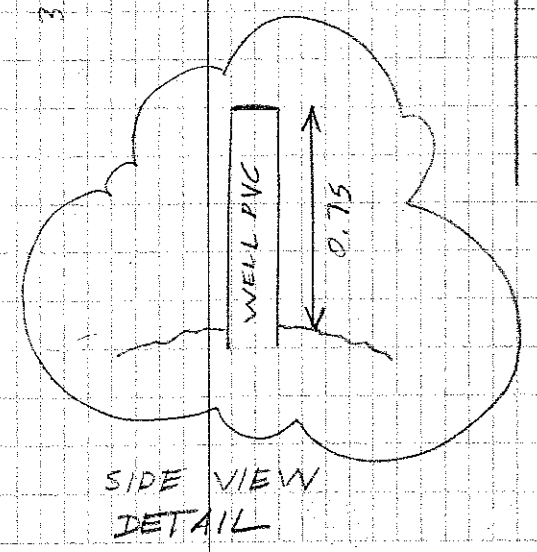
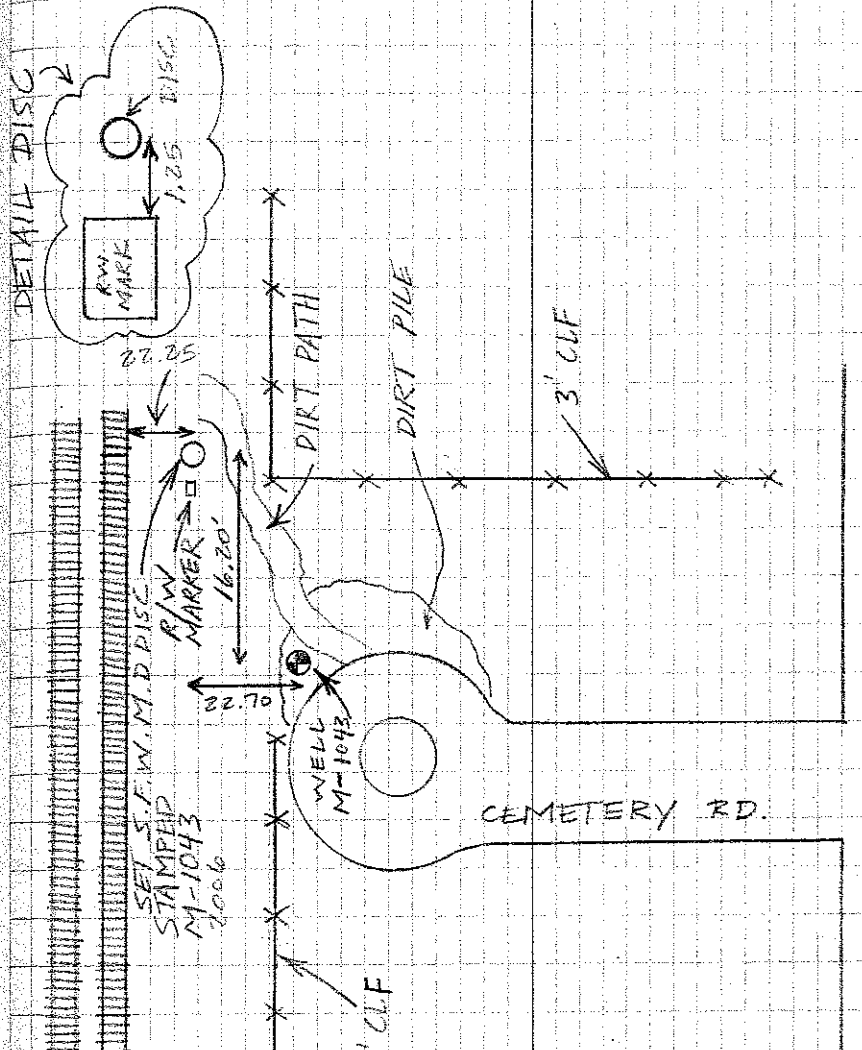
#03-77616
S.F.W.M.D

(SITE-5 DESCRIPTION)

DIRECTIONS - FROM THE INTERSECTION OF US-1 AND JENSEN BEACH BLVD TRAVEL EAST ON JENSEN BEACH BLVD FOR 2.85 MILES TO SR-707, TURN RIGHT AND HEAD SOUTH FOR 0.9 MILES UNTIL THE ROAD FORKS TAKE THE RIGHT FORK AND THEN TURN RIGHT INTO THE ALLSAINTS EPISCOPAL CHURCH CEMETERY AND TRAVEL WEST ON THE CEMETERY RD. FOR 0.35 TO THE BACK OF THE CEMETERY. THE WELL IS TO THE RIGHT AND BEHIND A LARGE PILE OF DIRT.



SKETCH OF WELL SITE M-1043



SR-707

SAME
CREW

#03-17616
S.F.W.M.D

1/13/06

SITE - T"
(ESTABLISH
ELEV ON WELL
SITE M-1259)

STA	BS	MEAN	HI	FS	MEAN	ELEV	ELEV
	9.710						BM 12.410 ✓
BM	7.875	7.875	20.285	✓			
	6.040			6.120			
TP#1				4.760	4.760	15.525	✓
				3.400			
	6.360						
SHAKE	4.780	4.780	20.305	✓			
	3.200			6.140			
TP#2				4.530	4.530	15.775	✓
				2.920			
	6.330						
SHAKE	4.540	4.54	20.315	✓			
	2.750			6.115			
TP#3				4.545	4.545	15.770	✓
				2.975			
	6.530						
SHAKE	4.150	4.150	19.920	✓			
	1.770			7.030			
TPM#1				5.350	5.350	14.570	✓
				3.670			
	7.100						
SHAKE	6.250	6.250	20.820	✓			
	5.400						

DESC
NGS # AJ 5248 (GCL DOS) NAVD 88
BRASS I. IN CONC. MON.
STAMPED GCL DOS 2001

CUT NL

CUT NL

CUT NL

CUT NL

CUT NL

CUT NL

MAG NL & TT

MAG NL & TT

SAME
CREW

#03-77616
S.F.W.M.D.

1/18/06

"SITE - T"
(ELEV CONT.)

STA	BS	MEAN	HI	FS	MEAN	ELEV	EM ELEV
				7.305			
TBM#2				6.465	6.465	14.355	✓
				5.625			
	9.130						
SHAKE	7.635	7.635	21.990				✓
	6.140						
				6.760			
TP#4				5.045	5.045	16.945	✓
				3.330			
	6.360						
SHAKE	4.380	4.380	21.325				✓
	2.400						
				7.140			
TP#5				5.130	5.130	16.195	✓
				3.120			
	6.780						
SHAKE	4.440	4.440	20.635				✓
	2.100						
				7.030			
TP#6				4.975	4.975	15.660	✓
				2.920			
	6.800						
SHAKE	4.540	4.540	20.200				✓
	2.280						
				6.320			
TP#7				4.370	4.370	15.830	✓
				2.420			

DESC

MAG NL § TT

MAG NL § TT

CUT NL

CUT NL

CUT NL

CUT NL

CUT NL

CUT NL

CUT NL

SAME CREW #03-77616 S.F.V.M.D

1/19/06 "SITE - T" (ELEV. CONT)

STA	BS	MEAN HI	FS	MEAN ELEV	BM ELEV
	6.940				
SHAKE	4.700	4.700	20.530		
	2.460				
			6.860		
TP#8			4.690	4.690	15.840
			2.520		
	6.900				
SHAKE	4.590	4.590	20.430		
	2.280				
			6.660		
TP#9			4.970	4.970	15.460
			3.280		
	6.385				
SHAKE	4.735	4.735	20.195		
	3.085				
			8.520		
BM			8.010	8.010	12.185
			7.500		12.150
					ERR = 0.035

DESC
 CUT NL
 CUT NL
 CUT NL
 CUT NL
 CUT NL

NGS # AJ 5621 (MS16) NAVD 88
 BRASS D. IN CONC MON.
 STAMPED MS16 2001

A. REDERO
T. LOPEZ
A. LOPEZ

#03 - 776.16
S.F.W.M.D.

"SITE - T"
(ELEV CONT)

2/22/06

STA	BS	MEAN HI	FS	MEAN ELEV	BM ELEV
	4.620				
TBM#1	4.355 4.090	4.355	18.925		14.570
WELL			6.030		
M-1259			5.660	5.660	13.265
			5.290		
	5.575				
SHAKE	5.205 4.935	5.205	18.470		
			5.190		
DISC			4.830	4.830	13.640
M-1259			4.470		
	5.700				
SHAKE	5.345 4.990	5.345	18.985		
			4.890		
TBM#2			4.620	4.620	14.365
			4.350		14.355

DESC

MAG NL & TT See pg 55

TOP OF PIPE WELL M-1259 (PVC)

" "

SET S.F.W.M.D. DISC STAMPED M-1259 2006

" "

MAG NL & TT

SAME
CREW

#03-77616
S.F.V.M.D.

(SITE - T
DESCRIPTION)

DIRECTIONS - FROM THE INTERSECTION OF US-1
AND BRIDGE RD. SR-708 TRAVEL
WEST ON BRIDGE RD. FOR 2.0
MILES TO THE BEND IN THE
ROAD. THE WELL IS ON THE
RIGHT AND WEST OF THE
PAVED SIDE ROAD, NORTH OF
DRAINAGE DITCH.

was dirt road before!

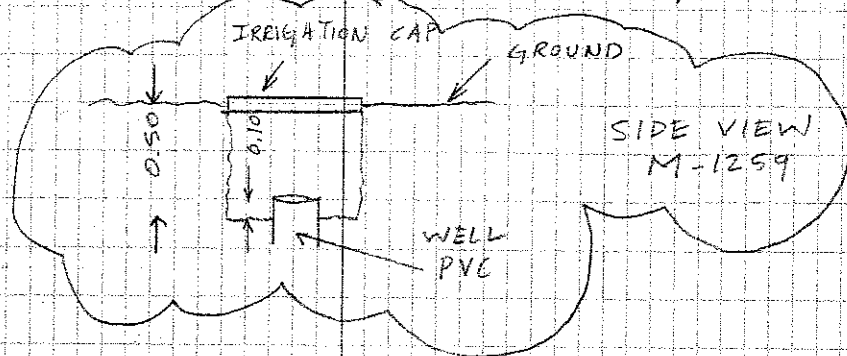
WELL
M-1259

SE BRIDGE RD.

FEDERAL HWY

US-1

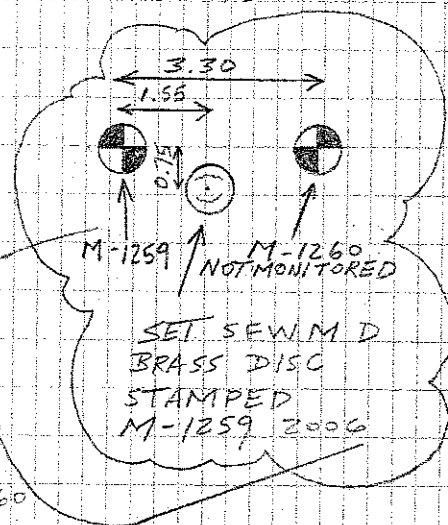
2564 / 59
SKETCH OF WELL SITE M-1259



SIDE VIEW
M-1259

NOTE: WELL M-1260
IS NOT
MONITORED

DETAIL



SET SEWIM D
BRASS DISC
STAMPED
M-1259 2006

GATE

ASPH

WELL
M-1259

WELL
M-1260

DITCH

DISC
M-1259

SE BRIDGE RD

CONC. HEADWALL

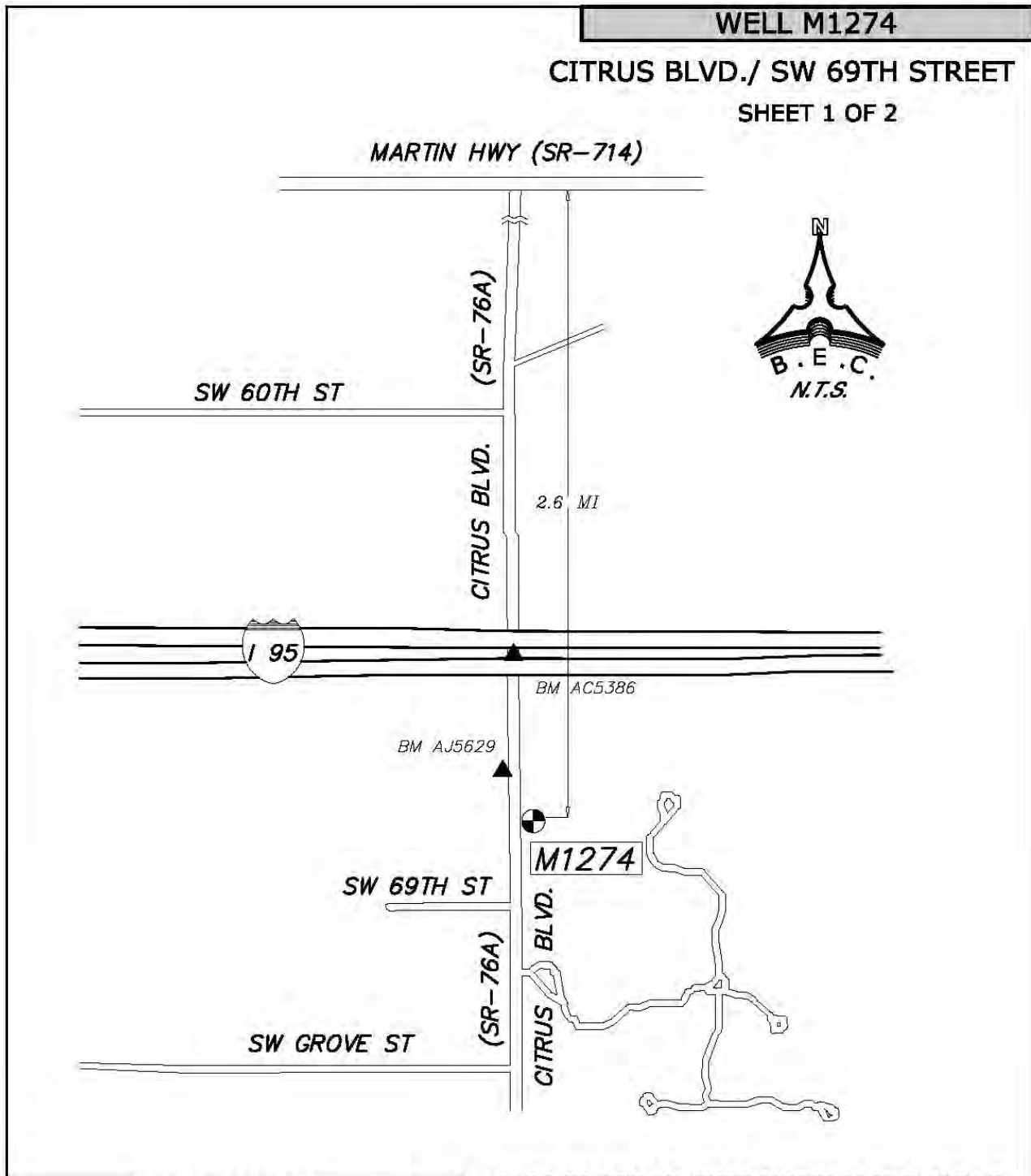


SOUTH FLORIDA WATER MANAGEMENT DISTRICT

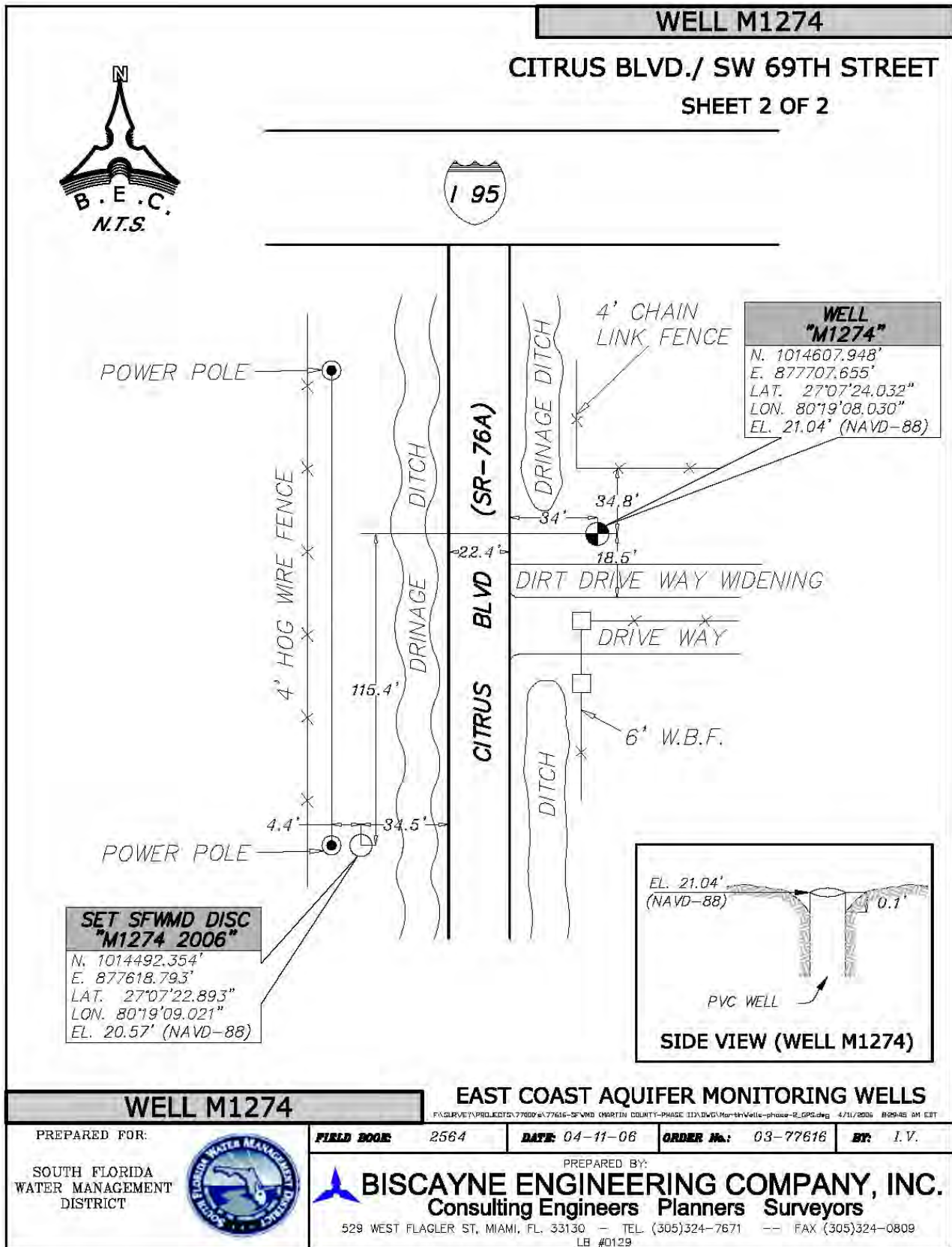
Rev. 04/11/06

COUNTY	MARTIN	PROJECT	CITRUS BLVD. / SW 69th ST	DESIGNATION	M1274 2006
SECTIONS	<u>34, 35</u>	TOWNSHIP	<u>38S</u>	RANGE	<u>40E</u>
GEOGRAPHIC INDEX OF QUAD <u>Florida</u>					
Established by Biscayne Engineering Company, Inc.			NAME OF QUADRANGLE INDIANTOWN SE #2503		
SURVEYOR Mike J. Bartholomew DATE <u>04 / 11 / 2006</u>			FIELD BOOK <u>2564</u> PAGE <u>29</u>		
HORIZONTAL DATUM: 1927 <input type="checkbox"/> 1983 <input checked="" type="checkbox"/> Other _____ (circle one) ZONE <u>0901 (EAST)</u>					
VERTICAL DATUM: MSL 1929 <input type="checkbox"/> 1988 <input checked="" type="checkbox"/> Other _____ (circle one)					
CONTROL ACCURACY: HORIZONTAL 1 <input type="checkbox"/> 2 <input type="checkbox"/> 3 <input checked="" type="checkbox"/> SUB-METER (circle one) VERTICAL 1 <input type="checkbox"/> 2 <input type="checkbox"/> 3 <input checked="" type="checkbox"/>					
STATE PLANE COORDINATES M1274 (U.S. Survey feet)		X= <u>877618.793</u>		Y= <u>1014492.354</u>	
				DISC EL.= <u>20.57'</u> (NAVD-88)	
LATITUDE M1274 27°07'22.893"N			LONGITUDE 080°19'09.021"W		
DESCRIPTION					
Benchmark is situated East of Citrus Blvd. (SR-76A) and South of I-95, Martin County, Florida.					
TO REACH the benchmark from the intersection of Martin Hwy (SR-714) and Citrus Blvd. (SR-76A), travel South on Citrus Blvd. (SR-76A) for 2.62 miles to the driveway for residence # 6807 on the left and the benchmark on the right. Benchmark is a brass SFWMD disc set 34.5 feet West of the edge of pavement of Citrus Blvd. (SR-76A) and 4.4 feet (more or less) East of a power pole.					
Note: Origin of NAVD88 elevation for BM "M1274" is closed bench level circuit through NGS benchmarks AJ5629 (Z516) and AC 5386 (I 95 H16).					

SKETCH: SEE PAGE 2 and 3



WELL M1274		EAST COAST AQUIFER MONITORING WELLS			
PREPARED FOR: SOUTH FLORIDA WATER MANAGEMENT DISTRICT		FIELD BOOK: 2564	DATE: 04-11-06	ORDER No.: 03-77616	BY: I.V.
		PREPARED BY: BISCAYNE ENGINEERING COMPANY, INC. Consulting Engineers Planners Surveyors 529 WEST FLAGLER ST, MIAMI, FL. 33130 — TEL. (305)324-7671 — FAX (305)324-0809 LB #0129			



From the "ngvd29.txt" file provided by NGS for the CERP Geodetic Vertical Control Project.
 Line/Part: L26232 SSN+: mark floated, SSN*: mark constrained, SSN#: mark floated
 & constrained

Mark ID	SSN	PID	Designation	Geopotential	Elevation	Codes
1663	9042	AJ5251	GCY D09	6.8413	6.9810	
1665	9044	AJ5629	Z 516	6.8009	6.9397	
1667	9046	AJ5252	GCY D10	6.4003	6.5309	

The NGS Data Sheet

See file [dsdata.txt](#) for more information about the datasheet.

DATABASE = Sybase ,PROGRAM = datasheet, VERSION = 7.30

1 National Geodetic Survey, Retrieval Date = JANUARY 26, 2006

AJ5629 *****

AJ5629 DESIGNATION - Z 516

AJ5629 PID - AJ5629

AJ5629 STATE/COUNTY- FL/MARTIN

AJ5629 USGS QUAD - INDIAN TOWN SE (1983)

AJ5629

AJ5629 *CURRENT SURVEY CONTROL

AJ5629

AJ5629* NAD 83(1986)- 27 07 30. (N) 080 19 10. (W) SCALED

AJ5629* NAVD 88 - 6.492 (meters) 21.30 (feet) ADJUSTED

AJ5629

AJ5629 GEOID HEIGHT- -27.21 (meters) GEOID03

AJ5629 DYNAMIC HT - 6.482 (meters) 21.27 (feet) COMP

AJ5629 MODELED GRAV- 979,105.5 (mgal) NAVD 88

AJ5629

AJ5629 VERT ORDER - FIRST CLASS II

AJ5629

AJ5629.The horizontal coordinates were scaled from a topographic map and have
 AJ5629.an estimated accuracy of +/- 6 seconds.

AJ5629

AJ5629.The orthometric height was determined by differential leveling
 AJ5629.and adjusted by the National Geodetic Survey in November 2001.

AJ5629

AJ5629.The geoid height was determined by GEOID03.

AJ5629

AJ5629.The dynamic height is computed by dividing the NAVD 88

AJ5629.geopotential number by the normal gravity value computed on the
 AJ5629.Geodetic Reference System of 1980 (GRS 80) ellipsoid at 45

AJ5629.degrees latitude (g = 980.6199 gals.).

AJ5629

AJ5629.The modeled gravity was interpolated from observed gravity values.

AJ5629

AJ5629; North East Units Estimated Accuracy

AJ5629;SPC FL E - 309,440. 267,470. MT (+/- 180 meters Scaled)

AJ5629

AJ5629 SUPERSEDED SURVEY CONTROL

AJ5629

AJ5629.No superseded survey control is available for this station.

AJ5629

AJ5629_U.S. NATIONAL GRID SPATIAL ADDRESS: 17RNL674004(NAD 83)

AJ5629_MARKER: DD = SURVEY DISK

AJ5629_SETTING: 7 = SET IN TOP OF CONCRETE MONUMENT

AJ5629_STAMPING: Z 516 2001

AJ5629_MARK LOGO: FL-085

AJ5629_PROJECTION: FLUSH

AJ5629_MAGNETIC: M = MARKER EQUIPPED WITH BAR MAGNET

AJ5629_STABILITY: C = MAY HOLD, BUT OF TYPE COMMONLY SUBJECT TO

AJ5629+STABILITY: SURFACE MOTION

AJ5629_SATELLITE: THE SITE LOCATION WAS REPORTED AS SUITABLE FOR

AJ5629+SATELLITE: SATELLITE OBSERVATIONS - May 07, 2001

AJ5629

AJ5629 HISTORY - Date Condition Report By
AJ5629 HISTORY - 20010507 MONUMENTED GCYI

AJ5629

AJ5629

AJ5629

STATION DESCRIPTION

AJ5629'DESCRIBED BY G.C.Y., INCORPORATED 2001 (MDL)

AJ5629'THE MARK IS LOCATED 10.3 KM (6.4 MI) SOUTHWEST OF STUART, 17.7 KM

AJ5629'(11.0 MI)

AJ5629'NORTHEAST OF INDIANTOWN AND 18.7 KM (11.6 MI) NORTHWESTERLY OF HOBE

AJ5629'SOUND NEAR THE WEST RIGHT-OF-WAY OF C.R. 76A (LOOP ROAD) IN SECTION

AJ5629'34,

AJ5629'TOWNSHIP 38 SOUTH, RANGE 40 EAST.

AJ5629'

AJ5629'MARTIN COUNTY RIGHT-OF-WAY.

AJ5629'

AJ5629'TO REACH THE MARK FROM THE INTERSECTION OF S.R. 714 AND C.R. 76 A

AJ5629'(LOOP

AJ5629'ROAD) GO SOUTH ON C.R. 76A 4.1 KM (2.5 MI) CROSSING OVER THE I-95

AJ5629'OVERPASS TO

AJ5629'THE MARK ON THE RIGHT.

AJ5629'

AJ5629'THE MARK IS 18.9 M (62.1 FT) SOUTH OF A WOOD POWER POLE, 24.6 M (80.7

AJ5629'FT) WEST

AJ5629'OF THE WEST EDGE OF PAVEMENT OF C.R. 76A 18.2 M (59.6 FT) NORTH OF A

AJ5629'WOOD

AJ5629'POWER POLE AND 1.0 M (3.4 FT) EASE OF A CARSONITE WITNESS POST SET IN

AJ5629'A HOG

AJ5629'WIRE FENCE.

AJ5629'

AJ5629'NOTE - MAGNET BURIED AT NORTH EDGE OF MARK.

AJ5629'

AJ5629'

*** retrieval complete.

Elapsed Time = 00:00:00

The NGS Data Sheet

See file [dsdata.txt](#) for more information about the datasheet.

DATABASE = Sybase ,PROGRAM = datasheet, VERSION = 7.30

1 National Geodetic Survey, Retrieval Date = JANUARY 26, 2006

AC5386 *****

AC5386 DESIGNATION - I95 H 16

AC5386 PID - AC5386

AC5386 STATE/COUNTY- FL/MARTIN

AC5386 USGS QUAD - PALM CITY (1983)

AC5386

AC5386 *CURRENT SURVEY CONTROL

AC5386

AC5386* NAD 83(1986)- 27 07 39. (N) 080 19 09. (W) SCALED

AC5386* NAVD 88 - 15.908 (meters) 52.19 (feet) ADJUSTED

AC5386

AC5386 GEOID HEIGHT- -27.21 (meters) GEOID03

AC5386 DYNAMIC HT - 15.884 (meters) 52.11 (feet) COMP

AC5386 MODELED GRAV- 979,105.7 (mgal) NAVD 88

AC5386

AC5386 VERT ORDER - SECOND CLASS II

AC5386

AC5386.The horizontal coordinates were scaled from a topographic map and have
AC5386.an estimated accuracy of +/- 6 seconds.

AC5386

AC5386.The orthometric height was determined by differential leveling
AC5386.and adjusted by the National Geodetic Survey in February 1997.

AC5386

AC5386.The geoid height was determined by GEOID03.

AC5386

AC5386.The dynamic height is computed by dividing the NAVD 88
AC5386.geopotential number by the normal gravity value computed on the
AC5386.Geodetic Reference System of 1980 (GRS 80) ellipsoid at 45
AC5386.degrees latitude (g = 980.6199 gals.).

AC5386

AC5386.The modeled gravity was interpolated from observed gravity values.

AC5386

AC5386; North East Units Estimated Accuracy

AC5386;SPC FL E - 309,710. 267,500. MT (+/- 180 meters Scaled)

AC5386

AC5386 SUPERSEDED SURVEY CONTROL

AC5386

AC5386.No superseded survey control is available for this station.

AC5386

AC5386_U.S. NATIONAL GRID SPATIAL ADDRESS: 17RNL674007(NAD 83)

AC5386_MARKER: DD = SURVEY DISK

AC5386_SETTING: 31 = SET IN A PAVEMENT SUCH AS STREET, SIDEWALK, CURB, ETC.

AC5386_SP_SET: BRIDGE GUARDRAIL

AC5386_STAMPING: BM I 95 H 16

AC5386_MARK LOGO: FLDT

AC5386_MAGNETIC: O = OTHER; SEE DESCRIPTION

AC5386_STABILITY: D = MARK OF QUESTIONABLE OR UNKNOWN STABILITY

AC5386

AC5386 HISTORY - Date Condition Report By

AC5386 HISTORY - 1989 MONUMENTED FLDT

AC5386

AC5386

STATION DESCRIPTION

AC5386

AC5386'DESCRIBED BY FLORIDA DEPARTMENT OF TRANSPORTATION 1989 (CBM)
AC5386'TO REACH THE MARK FROM THE INTERCHANGE OF INTERSTATE ROUTE 95 AND SR
AC5386'708, ABOUT 6 MILES (9.7 KM) WEST OF JUPITER ISLAND, GO NORTHERLY ON
AC5386'INTERSTATE ROUTE 95 FOR ABOUT 4.7 MILES (7.6 KM) TO THE INTERSTATE
AC5386'ROUTE 95 AND STATE ROAD 76 INTERCHANGE, CONTINUE NORTHWESTERLY ON
AC5386'INTERSTATE ROUTE 95 FOR ABOUT 4.35 MILES (7.00 KM) TO THE COUNTY ROAD
AC5386'76 A OVERPASS AND THE MARK. IT IS SET IN A DRILL HOLE IN THE TOP EAST
AC5386'CONCRETE GUARDRAIL, 11.3 FEET (3.4 M) EAST OF THE EAST EDGE OF THE
AC5386'NORTHBOUND LANES AND 10.9 FEET (3.3 M) NORTH OF THE SOUTH END OF THE
AC5386'EAST CONCRETE GUARDRAIL.

*** retrieval complete.

Elapsed Time = 00:00:00

From the "ngvd29.txt" file provided by NGS for the CERP Geodetic Vertical Control Project.
 Line/Part: L26232 SSN+: mark floated, SSN*: mark constrained, SSN#: mark floated
 & constrained

Mark ID	SSN	PID	Designation	Geopotential	Elevation	Codes
1663	9042	AJ5251	GCY D09	6.8413	6.9810	
1665	9044	AJ5629	Z 516	6.8009	6.9397	
1667	9046	AJ5252	GCY D10	6.4003	6.5309	

The NGS Data Sheet

See file [dsdata.txt](#) for more information about the datasheet.

DATABASE = Sybase ,PROGRAM = datasheet, VERSION = 7.30

1 National Geodetic Survey, Retrieval Date = JANUARY 26, 2006

AJ5251 *****

AJ5251 DESIGNATION - GCY D09

AJ5251 PID - AJ5251

AJ5251 STATE/COUNTY- FL/MARTIN

AJ5251 USGS QUAD - INDIAN TOWN SE (1983)

AJ5251

*CURRENT SURVEY CONTROL

AJ5251

AJ5251* NAD 83(1999)- 27 05 45.85959(N) 080 19 09.23398(W) ADJUSTED

AJ5251* NAVD 88 - 6.533 (meters) 21.43 (feet) ADJUSTED

AJ5251

AJ5251 X - 955,481.243 (meters) COMP

AJ5251 Y - -5,601,114.939 (meters) COMP

AJ5251 Z - 2,887,687.076 (meters) COMP

AJ5251 LAPLACE CORR- -2.21 (seconds) DEFLEC99

AJ5251 ELLIP HEIGHT- -20.61 (meters) (09/27/01) GPS OBS

AJ5251 GEOID HEIGHT- -27.14 (meters) GEOID03

AJ5251 DYNAMIC HT - 6.523 (meters) 21.40 (feet) COMP

AJ5251 MODELED GRAV- 979,103.3 (mgal) NAVD 88

AJ5251

AJ5251 HORZ ORDER - FIRST

AJ5251 VERT ORDER - FIRST CLASS II

AJ5251 ELLP ORDER - FOURTH CLASS II

AJ5251

AJ5251.The horizontal coordinates were established by GPS observations

AJ5251.and adjusted by the National Geodetic Survey in September 2001.

AJ5251

AJ5251.The orthometric height was determined by differential leveling

AJ5251.and adjusted by the National Geodetic Survey in November 2001.

AJ5251

AJ5251.The X, Y, and Z were computed from the position and the ellipsoidal ht.

AJ5251

AJ5251.The Laplace correction was computed from DEFLEC99 derived deflections.

AJ5251

AJ5251.The ellipsoidal height was determined by GPS observations

AJ5251.and is referenced to NAD 83.

AJ5251

AJ5251.The geoid height was determined by GEOID03.

AJ5251

AJ5251.The dynamic height is computed by dividing the NAVD 88

AJ5251.geopotential number by the normal gravity value computed on the

AJ5251.Geodetic Reference System of 1980 (GRS 80) ellipsoid at 45

AJ5251.degrees latitude (g = 980.6199 gals.).

AJ5251

AJ5251.The modeled gravity was interpolated from observed gravity values.

AJ5251

AJ5251; North East Units Scale Factor Converg.

AJ5251;SPC FL E - 306,231.308 267,509.035 MT 0.99999742 +0 18 36.3

AJ5251;UTM 17 - 2,997,258.804 567,486.001 MT 0.99965622 +0 18 36.3

AJ5251

AJ5251! - Elev Factor x Scale Factor = Combined Factor

AJ5251!SPC FL E - 1.00000324 x 0.99999742 = 1.00000066
 AJ5251!UTM 17 - 1.00000324 x 0.99965622 = 0.99965946
 AJ5251
 AJ5251: Primary Azimuth Mark Grid Az
 AJ5251:SPC FL E - GCY D08 180 12 09.7
 AJ5251:UTM 17 - GCY D08 180 12 09.7
 AJ5251

PID	Reference Object	Distance	Geod. Az
			ddmmss.s
AJ5250	GCY D08	APPROX. 0.9 KM	1803046.0

AJ5251
 AJ5251 SUPERSEDED SURVEY CONTROL
 AJ5251
 AJ5251 NAVD 88 (12/12/02) 6.53 (m) 21.4 (f) LEVELING 3
 AJ5251

AJ5251.Superseded values are not recommended for survey control.
 AJ5251.NGS no longer adjusts projects to the NAD 27 or NGVD 29 datums.
 AJ5251.[See file dsdata.txt](#) to determine how the superseded data were derived.
 AJ5251

AJ5251_U.S. NATIONAL GRID SPATIAL ADDRESS: 17RNK6748697259(NAD 83)
 AJ5251_MARKER: F = FLANGE-ENCASED ROD
 AJ5251_SETTING: 49 = STAINLESS STEEL ROD W/O SLEEVE (10 FT.+)
 AJ5251_STAMPING: GCY D09 2001
 AJ5251_MARK LOGO: FL-085
 AJ5251_PROJECTION: FLUSH
 AJ5251_MAGNETIC: M = MARKER EQUIPPED WITH BAR MAGNET
 AJ5251_STABILITY: B = PROBABLY HOLD POSITION/ELEVATION WELL
 AJ5251_SATELLITE: THE SITE LOCATION WAS REPORTED AS SUITABLE FOR
 AJ5251+SATELLITE: SATELLITE OBSERVATIONS - April 24, 2002
 AJ5251_ROD/PIPE-DEPTH: 21.9 meters
 AJ5251

HISTORY	Date	Condition	Report By
HISTORY	20010511	MONUMENTED	GCYI
HISTORY	20010718	GOOD	GCYI
HISTORY	20020424	GOOD	MAPTEC

AJ5251
 AJ5251 STATION DESCRIPTION
 AJ5251
 AJ5251'DESCRIBED BY G.C.Y., IN

From the "ngvd29.txt" file provided by NGS for the CERP Geodetic Vertical Control Project.
 Line/Part: L26232 SSN+: mark floated, SSN*: mark constrained, SSN#: mark floated
 & constrained

Mark ID	SSN	PID	Designation	Geopotential	Elevation	Codes
1663	9042	AJ5251	GCY D09	6.8413	6.9810	
1665	9044	AJ5629	Z 516	6.8009	6.9397	
1667	9046	AJ5252	GCY D10	6.4003	6.5309	

The NGS Data Sheet

See file [dsdata.txt](#) for more information about the datasheet.

DATABASE = Sybase ,PROGRAM = datasheet, VERSION = 7.30

```

1      National Geodetic Survey,      Retrieval Date = JANUARY 26, 2006
AJ5252 *****
AJ5252 DESIGNATION - GCY D10
AJ5252 PID - AJ5252
AJ5252 STATE/COUNTY- FL/MARTIN
AJ5252 USGS QUAD - PALM CITY (1983)
AJ5252
AJ5252 *CURRENT SURVEY CONTROL
AJ5252
AJ5252* NAD 83(1999)- 27 09 14.07397(N) 080 19 08.46725(W) ADJUSTED
AJ5252* NAVD 88 - 6.084 (meters) 19.96 (feet) ADJUSTED
AJ5252
AJ5252 X - 955,010.622 (meters) COMP
AJ5252 Y - -5,598,230.580 (meters) COMP
AJ5252 Z - 2,893,390.629 (meters) COMP
AJ5252 LAPLACE CORR- -2.20 (seconds) DEFLEC99
AJ5252 ELLIP HEIGHT- -21.17 (meters) (09/27/01) GPS OBS
AJ5252 GEOID HEIGHT- -27.26 (meters) GEOID03
AJ5252 DYNAMIC HT - 6.074 (meters) 19.93 (feet) COMP
AJ5252 MODELED GRAV- 979,108.5 (mgal) NAVD 88
AJ5252
AJ5252 HORZ ORDER - FIRST
AJ5252 VERT ORDER - FIRST CLASS II
AJ5252 ELLP ORDER - FOURTH CLASS II
AJ5252
AJ5252.The horizontal coordinates were established by GPS observations
AJ5252.and adjusted by the National Geodetic Survey in September 2001.
AJ5252
AJ5252.The orthometric height was determined by differential leveling
AJ5252.and adjusted by the National Geodetic Survey in November 2001.
AJ5252
AJ5252.The X, Y, and Z were computed from the position and the ellipsoidal ht.
AJ5252
AJ5252.The Laplace correction was computed from DEFLEC99 derived deflections.
AJ5252
AJ5252.The ellipsoidal height was determined by GPS observations
AJ5252.and is referenced to NAD 83.
AJ5252
AJ5252.The geoid height was determined by GEOID03.
AJ5252
AJ5252.The dynamic height is computed by dividing the NAVD 88
AJ5252.geopotential number by the normal gravity value computed on the
AJ5252.Geodetic Reference System of 1980 (GRS 80) ellipsoid at 45
AJ5252.degrees latitude (g = 980.6199 gals.).
AJ5252
AJ5252.The modeled gravity was interpolated from observed gravity values.
AJ5252
AJ5252; North East Units Scale Factor Converg.
AJ5252;SPC FL E - 312,640.005 267,495.427 MT 0.99999739 +0 18 38.9
AJ5252;UTM 17 - 3,003,665.315 567,472.398 MT 0.99965620 +0 18 38.9
AJ5252
AJ5252! - Elev Factor x Scale Factor = Combined Factor
    
```

AJ5252!SPC FL E - 1.00000333 x 0.99999739 = 1.00000072
 AJ5252!UTM 17 - 1.00000333 x 0.99965620 = 0.99965952
 AJ5252
 AJ5252 SUPERSEDED SURVEY CONTROL
 AJ5252
 AJ5252.No superseded survey control is available for this station.
 AJ5252
 AJ5252_U.S. NATIONAL GRID SPATIAL ADDRESS: 17RNL6747203665(NAD 83)
 AJ5252_MARKER: DH = HORIZONTAL CONTROL DISK
 AJ5252_SETTING: 7 = SET IN TOP OF CONCRETE MONUMENT
 AJ5252_STAMPING: GCY D10 2001
 AJ5252_MARK LOGO: FL-085
 AJ5252_PROJECTION: FLUSH
 AJ5252_MAGNETIC: M = MARKER EQUIPPED WITH BAR MAGNET
 AJ5252_STABILITY: C = MAY HOLD, BUT OF TYPE COMMONLY SUBJECT TO
 AJ5252+STABILITY: SURFACE MOTION
 AJ5252_SATELLITE: THE SITE LOCATION WAS REPORTED AS SUITABLE FOR
 AJ5252+SATELLITE: SATELLITE OBSERVATIONS - July 19, 2001
 AJ5252
 AJ5252 HISTORY - Date Condition Report By
 AJ5252 HISTORY - 20010508 MONUMENTED GCYI
 AJ5252 HISTORY - 20010719 GOOD GCYI
 AJ5252
 AJ5252 STATION DESCRIPTION
 AJ5252
 AJ5252'DESCRIBED BY G.C.Y., INCORPORATED 2001 (MDL)
 AJ5252'THE STATION IS LOCATED 8.3 KM (5.2 MI) SOUTHWEST OF STUART, 21.3 KM
 AJ5252'(13.2 MI)
 AJ5252'NORTHWEST OF HOBE SOUND AND 20.8 KM (12.9 MI) NORTHEAST OF INDIANTOWN
 AJ5252'IN
 AJ5252'THE WEST RIGHT OF WAY OF C.R. 76-A (LOOP ROAD) IN SECTION 22, TOWNSHIP
 AJ5252'38
 AJ5252'SOUTH, RANGE 40 EAST, MARTIN COUNTY, FLORIDA.
 AJ5252'
 AJ5252'TO REACH THE STATION FROM THE INTERSECTION OF THE SUNSHINE STATE
 AJ5252'PARKWAY AND S.R. 714, GO WEST ON S.R. 714, 1.4 KM (0.9 MI) TO THE
 AJ5252'INTERSECTION
 AJ5252'WITH C.R. 76-A (LOOP ROAD), THEN SOUTH ON LOOP ROAD, 0.9 KM (0.5 MI)
 AJ5252'TO THE
 AJ5252' STATION ON THE RIGHT.
 AJ5252'
 AJ5252'THE STATION IS 2.6 M (8.5 FT) WEST OF THE WEST EDGE OF PAVEMENT OF
 AJ5252'C.R.76-A,
 AJ5252'33.2 M (109 FT) NORTH OF THE DRIVEWAY INTO ADDRESS 4289 AND 0.7 M (2.3
 AJ5252'FT)
 AJ5252'EAST OF A CARSONITE WITNESS POST .
 AJ5252'REFERENCES-
 AJ5252'GCY, INC. MAG NAIL AND WASHER IN WOOD POWER POLE - 356 DEG. MAG. AZ.,
 AJ5252'45.44M
 AJ5252'(149.07 FT)
 AJ5252'GCY, INC. MAG NAIL AND WASHER IN WEST EDGE OF PAVEMENT C.R. 76-A - 26
 AJ5252'DEG.
 AJ5252'MAG.
 AJ5252'AZ., 8.63 M (28.30 FT)
 AJ5252'GCY, INC. MAG NAIL AND WASHER IN WEST EDGE OF PAVEMENT C.R. 76-A -
 AJ5252'162 DEG.
 AJ5252'MAG. AZ., 8.84 M (29.00 FT)
 AJ5252'GCY, INC. MAG NAIL AND WASHER IN WOOD POWER POLE - 198 DEG. MAG. AZ.,
 AJ5252'29.13 M
 AJ5252' (95.57 FT)

AJ5252'

AJ5252'NOTE-

AJ5252'DEEP ONE MAGNET BURIED AT NORTH SIDE OF MONUMENT.

AJ5252'

AJ5252'

AJ5252'

AJ5252'

AJ5252'

AJ5252

AJ5252

STATION RECOVERY (2001)

AJ5252

AJ5252'RECOVERY NOTE BY G.C.Y., INCORPORATED 2001 (MDL)

AJ5252'RECOVERED AS DESCRIBED.

*** retrieval complete.

Elapsed Time = 00:00:00

LEVEL RUN

DATE	STA	BS	MEAN	HI	FS	MEAN	ELEV	BM ELEV. NAVD-88	NOTES
	NGS BM	8.64							
01/11/06	AJ5629	7.18	7.18	28.48				21.30	
	(Z 516)	5.72							
	DISK				10.05				<i>SET SFWMD</i>
(FB 2564,	M1274				7.91	7.91	20.57		<i>DISK STAMPED</i>
PG 29...)					5.77				<i>M 1274 2006</i>
		9.42							
	SHAKE	7.58	7.58	28.15					
		5.74							
	WELL				8.42				<i>TOP OF PIPE</i>
	M1274				7.11	7.11	21.04		<i>WELL</i>
					5.80				<i>M1274</i>
		8.26							
	SHAKE	7.03	7.03	28.07					
		5.79							
					2.89				
	TP#1				1.68	1.68	26.39		
					0.47				
		12.59							
	SHAKE	11.73	11.73	38.11					
		10.86							
					1.29				
	TP#2				0.76	0.76	37.36		
					0.23				
		12.48							
	SHAKE	11.71	11.71	49.07					
		10.94							
					2.79				
	TP#3				2.18	2.18	46.89		
					1.57				
		7.12							
	SHAKE	6.86	6.86	53.75					
		6.60							
01/11/06	NGS BM				1.91				<i>ERROR</i>
(FB 2564,	AC5386				1.57	1.57	52.18	52.19	<i>0.02</i>
PG 30)	(I95 H 16)				1.23				