

Company: FLORIDA DESIGN DRILLING
Well: FA-2
Field: MIRAMAR
County: BROWARD
State: FLORIDA

Location: Broward County, Florida
AP#:

SEC: TWP
RGE: RGE
Elevation: Elevation
K.B. G.L.

Permanent Datum: PAD
Log Measured From: PAD
Drilling Measured From: PAD
Date: 30-SEPT-2008

Run Number: 1100
Run Date: 11/01/08
Depth Logger: 1350'
Bottom Logged Interval: CASING

Open Hole Size: 3.5"
Density / Viscosity: NA
Max. Recorder Temp: 54.6 DEFS
Estimated Cement Top: ON ARRIVAL
Time Well Ready for Production: VA-203
Location: JUPITER
Recorded By: LEECK
Witnessed By: M. BLACK

Run Number: 1100
Run Date: 11/01/08
Depth Logger: 1350'
Bottom Logged Interval: CASING

ONE: 41"
TWO: 33"
Casing Record: 42"
Surface String: 34"
Production String: 34"

Size: 42"
Weight: 31.5 WT
Top SURFACE SURFACE
Bottom 1050'

DUAL INDUCTION LOG

Company: FLORIDA DESIGN DRILLING
Well: FA-2
Field: MIRAMAR
County: BROWARD
State: FLORIDA

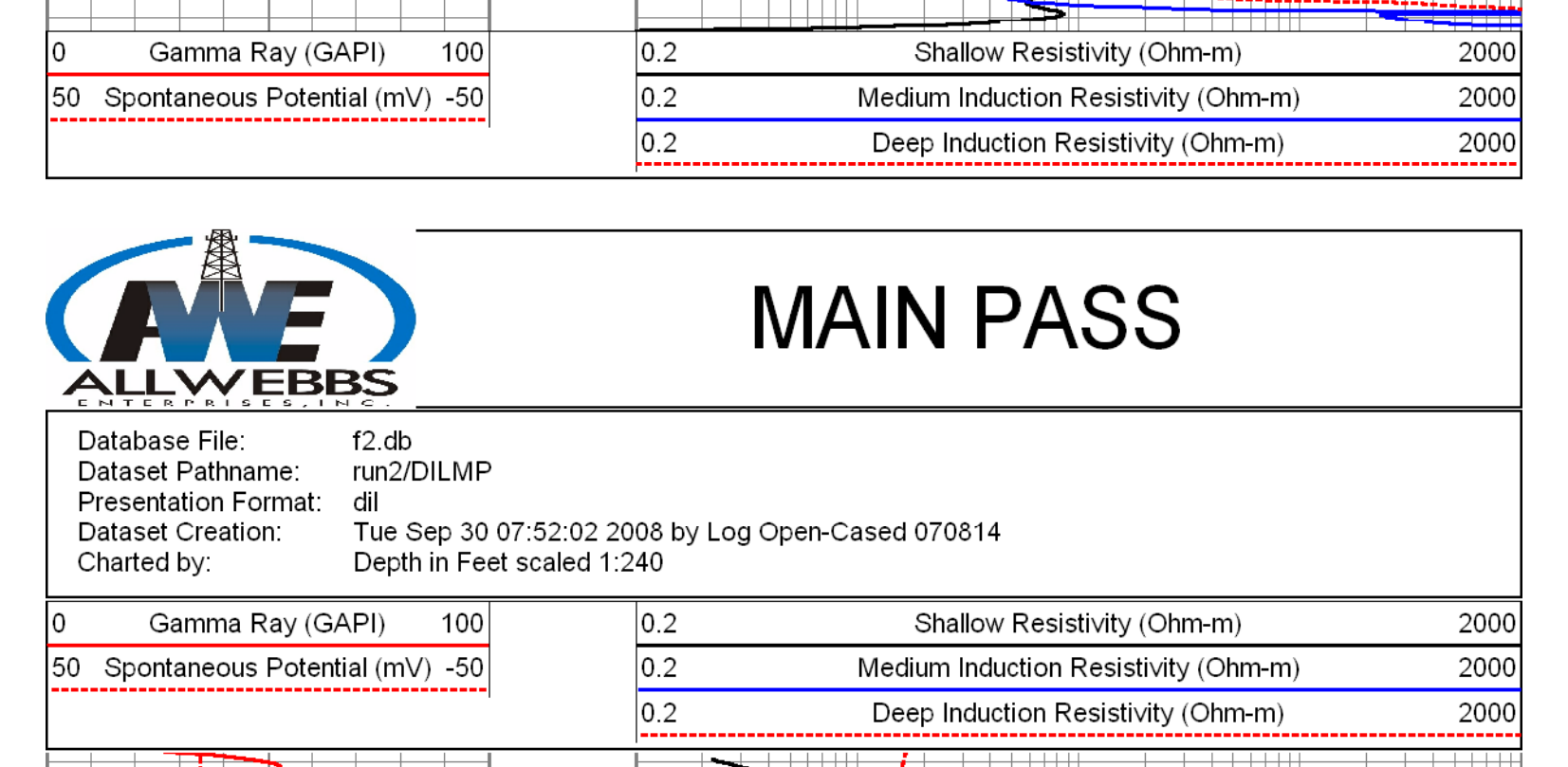
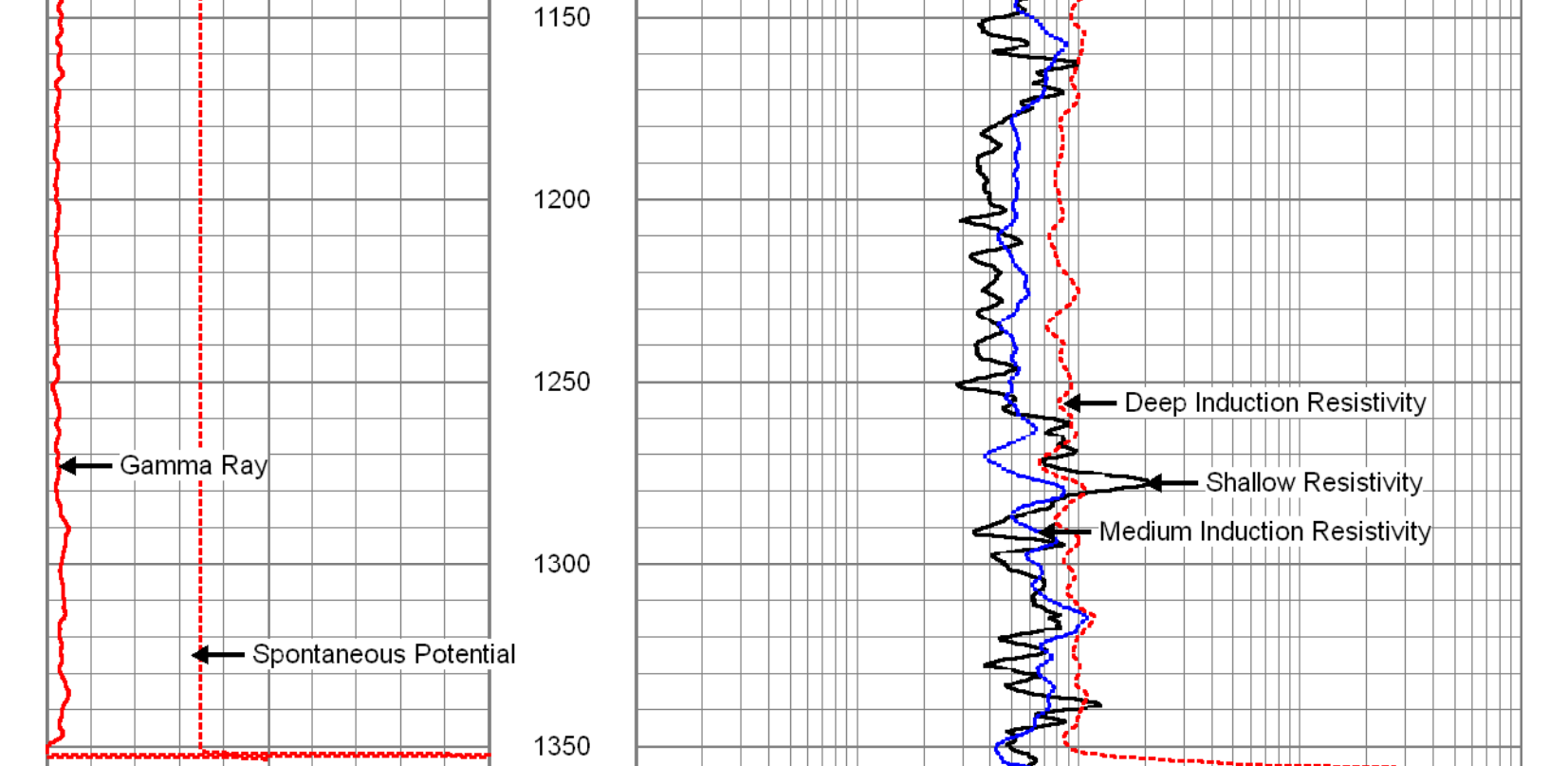
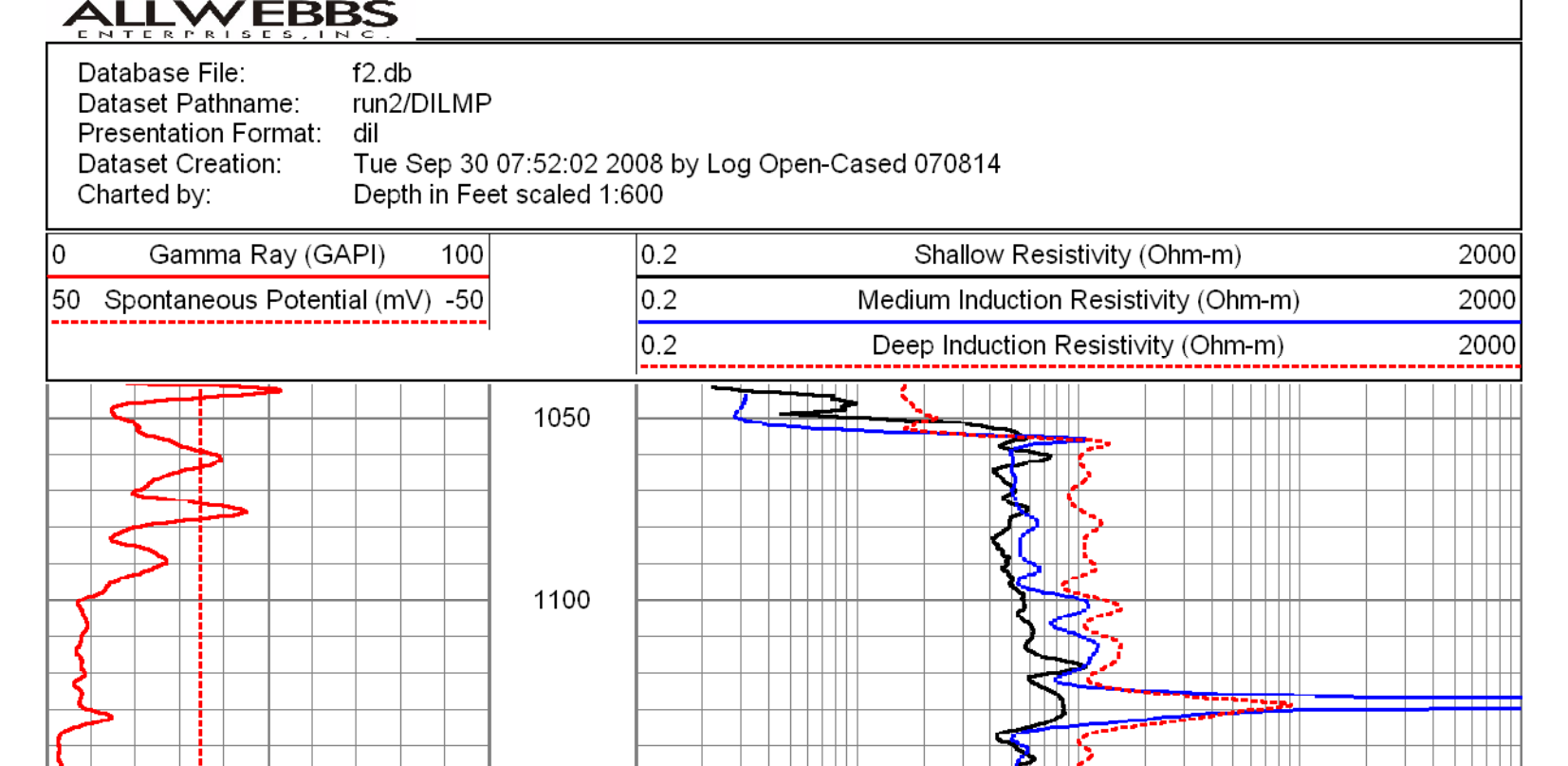
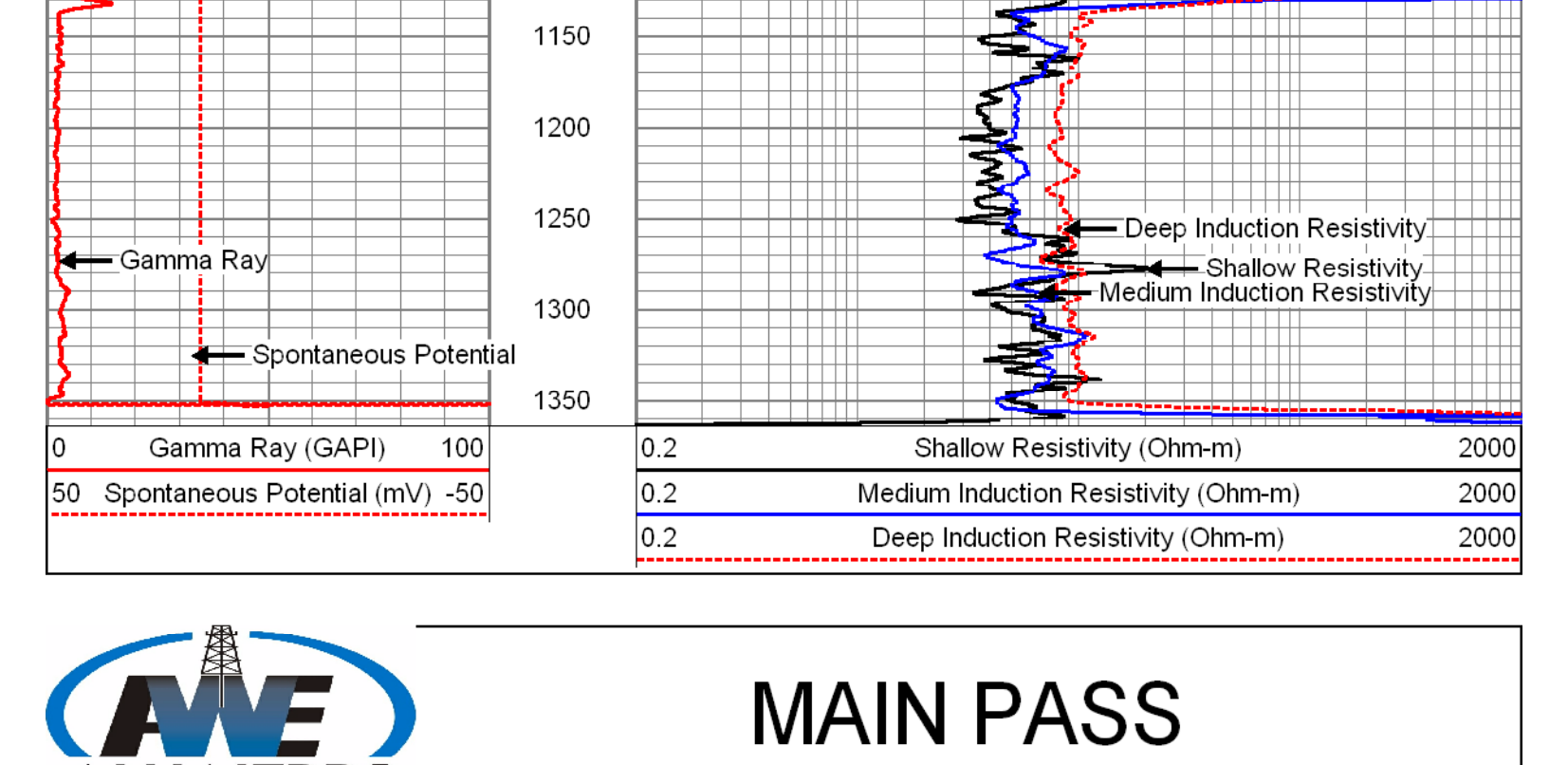
Other Services: SEE COMMENTS

<<< Fold Here >>>

All interpretations are opinions based on inferences from electrical or other measurements and we cannot and do not guarantee the accuracy or correctness of any interpretation, and we shall not, except in the case of gross or willful negligence on our part, be liable or responsible for any loss, costs, damages, or expenses incurred or sustained by anyone resulting from any interpretation made by any of our officers, agents or employees. These interpretations are also subject to our general terms and conditions set out in our current Price Schedule.

Comments

DHTVS
XYC/GR
FCT
FLOWMETER



Calibration Report

Database File: f2.db
Dataset Pathname: run2/DILMP
Dataset Creation: Tue Sep 30 07:52:02 2008 by Log Open-Cased 070814

Dual Induction Calibration Report

Serial-Model: DIL2-GEAR
Surface Cal Performed: Sun Sep 14 10:28:10 2008
Downhole Cal Performed: Tue Sep 30 07:44:17 2008
After Survey Verification Performed: Tue Sep 30 07:50:40 2008

Surface Calibration		Readings		References		Results	
Loop:		Air	Loop	Air	Loop	m	b
Deep		-0.002	0.620	0.000	400.000	642.996	1.342
Medium		0.007	0.784	0.000	465.000	598.729	-4.404
Internal:		Zero	Cal	Zero	Cal	m	b
Deep		0.004	0.592	0.000	400.000	680.370	-2.703
Medium		0.001	0.672	0.000	465.000	692.332	-0.448

Downhole Calibration		Readings		References		Results	
Internal:		Zero	Cal	Zero	Cal	m	b
Deep		1.126	406.146	3.900	382.179	0.934	2.848
Medium		-2.233	440.094	-4.936	489.303	1.117	-2.441
Shallow		2.510	0.010	500.000	2.000	199.214	-0.078

After Survey Verification		Readings		Targets		Results	
Internal:		Zero	Cal	Zero	Cal	m'	b'
Deep		0.396	357.439	1.126	406.146	0.934	2.848
Medium		-0.406	374.783	-2.233	440.094	1.117	-2.441
Shallow		500.603	1.427	500.000	2.000	0.998	0.576

Sensor	Offset (ft)	Schematic	Description	Len (ft)	OD (in)	Wt (lb)
			CHD-SDSCHD (SDS) Cable Head	1.00	1.50	5.00
SP CILD	11.00 10.50		DIL-GEAR (DIL2) GO_DILLL3/SP	21.25	3.50	150.00
CILM	7.00					
RLL3	2.00					

Dataset: f2.db; field\well\run2/DILMP
Total Length: 22.25 ft
Total Weight: 155.00 lb
O.D.: 3.50 in



FLUID CONDUCTIVITY TEMPERATURE LOG

Company	FLORIDA DESIGN DRILLING	Company	FLORIDA DESIGN DRILLING
Well	FA-2	Well	FA-2
Field	MIRAMAR	Field	MIRAMAR
County	BROWARD	County	BROWARD
State	FLORIDA	State	FLORIDA
Location:		API#:	
SEC	TWP	RGE	Elevation
Permanent Datum	PAD		
Log Measured From	PAD		
Drilling Measured From	PAD		
Date	30-SEPT-2008		
Run Number	TWO		
Depth Driller	1350		
Depth Logger	1350		
Bottom Logged Interval	1350		
Top Log Interval	CASING		
Open Hole Size	33"		
Type Fluid	WATER		
Density / Viscosity	NA		
Max. Recorded Temp.	54.6 DEEG		
Estimated Cement Top	NA		
Time Well Ready	ON ARRIVAL		
Time Logger on Bottom	0000		
Equipment Number	VA-203		
Location	JUPITER		
Recorded By	LEE		
Witnessed By	M. BLACK		
Run Number	ONE	Bit From	1057"
TWO	33"	CCASING	1350"
Casing Record	42"	Size	Weight
Surface String	200'	Top SURFACE SURFACE	Bottom
Prot. String	34"	375 WWT	1050'
Production String			
Liner			

<<< Fold Here >>>

All interpretations are opinions based on inferences from electrical or other measurements and we cannot and do not guarantee the accuracy or correctness of any interpretation, and we shall not, except in the case of gross or willful negligence on our part, be liable or responsible for any loss, costs, damages, or expenses incurred or sustained by anyone resulting from any interpretation made by any of our officers, agents or employees. These interpretations are also subject to our general terms and conditions set out in our current Price Schedule.

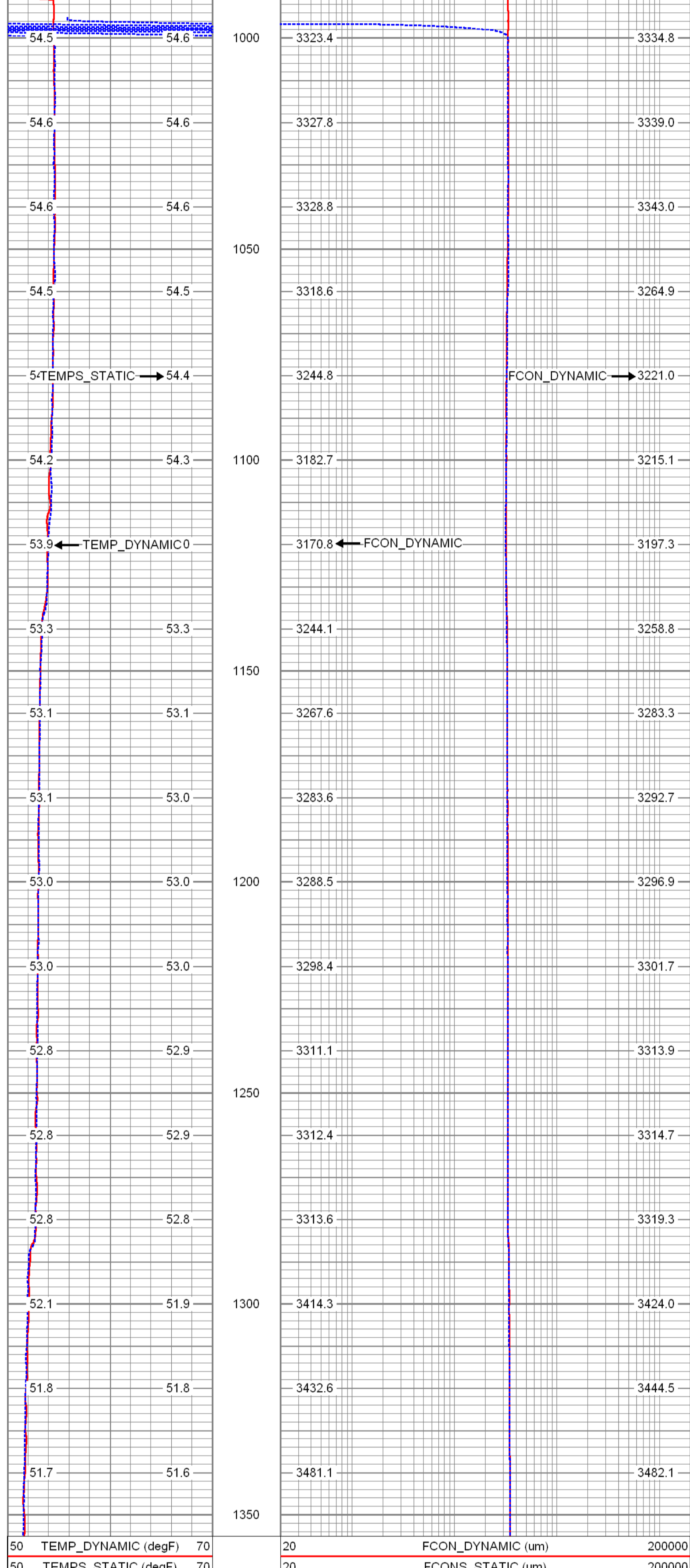
Comments

DHTVS
DIL/LL3/SP
XYC/GR
FLOWMETER

STATIC & DYNAMIC FCT

Database File: f2.db
Dataset Pathname: run2/FCTD
Presentation Format: fct
Dataset Creation: Tue Sep 30 08:53:50 2008 by Log Open-Cased 070814
Charted by: Depth in Feet scaled 1:240

50 TEMP_DYNAMIC (degF)	70	20 FCON_DYNAMIC (um)	200000
50 TEMPS_STATIC (degF)	70	20 FCONS_STATIC (um)	200000
MP_DYNAM (degF)	MP_STAT (degF)	ONS_STAT (um)	ON_DYNAM (um)



50 TEMP_DYNAMIC (degF)	70	20 FCON_DYNAMIC (um)	200000
50 TEMPS_STATIC (degF)	70	20 FCONS_STATIC (um)	200000
MP_DYNAM (degF)	MP_STAT (degF)	ONS_STAT (um)	ON_DYNAM (um)

Calibration Report

Database File: f2.db
Dataset Pathname: run2/FCTS
Dataset Creation: Tue Sep 30 08:43:52 2008 by Log Open-Cased 070814

Temperature Calibration Report

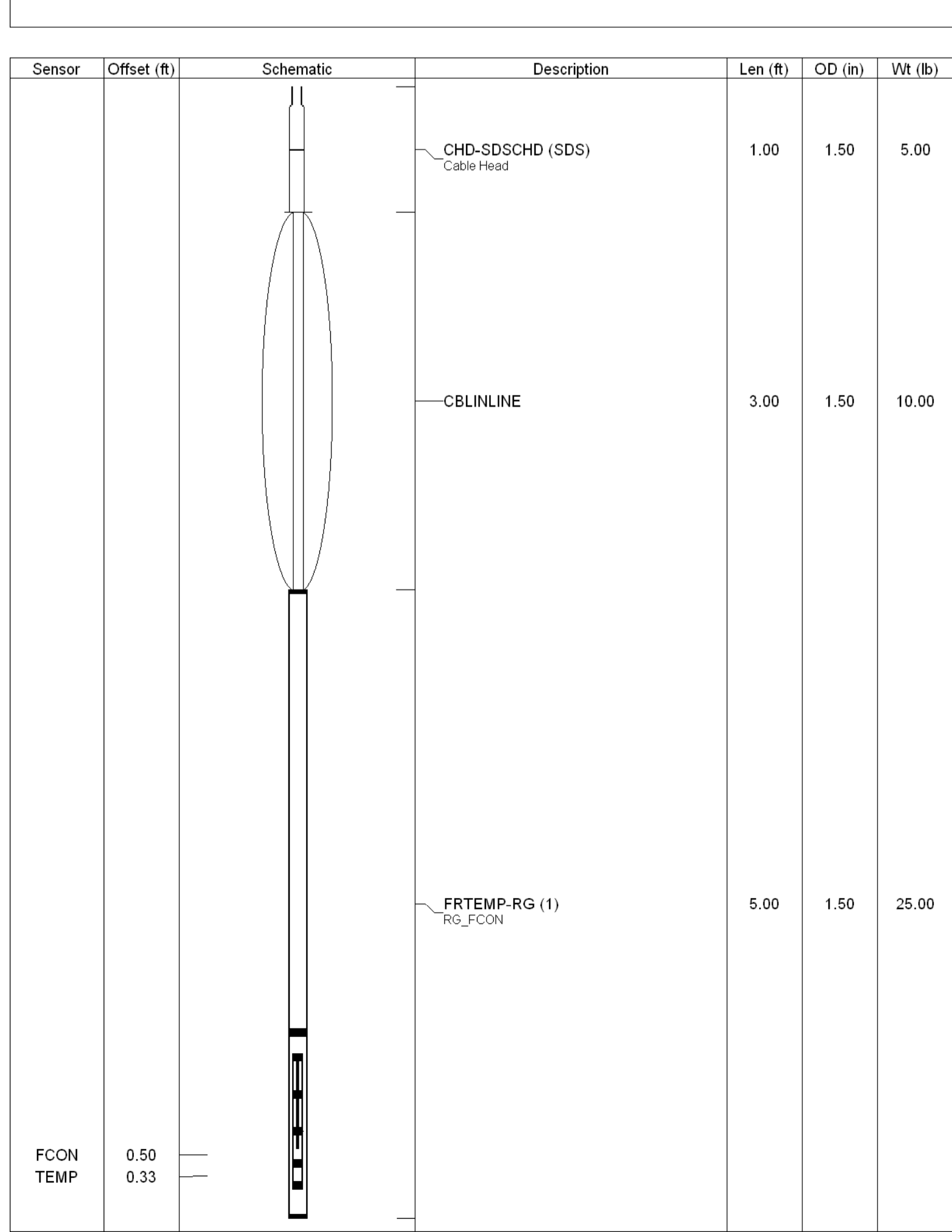
Serial Number:	1
Tool Model:	RG
Performed:	Wed Jul 23 14:04:42 2008

Point #	Reading	Reference
1	5464.36	36.00 degF
2	7101.07	72.00 degF
3	11403.00	118.00 degF
4		degF
5		degF
6		degF
7		degF
8		degF
9		degF
10		degF

Calibration Report

Serial Number: 1
Tool Model: RG
Performed: Thu Jun 05 14:38:47 2008

Reference (um)	Reading ()
1000.000	1441.540
10000.000	9666.960
25000.000	24443.400
50000.000	41928.200





FLOWMETER LOG

Company	FLORIDA DESIGN DRILLING	Company	FLORIDA DESIGN DRILLING
Well	FA-2	Well	FA-2
Field	MIRAMAR	Field	MIRAMAR
County	BROWARD	County	BROWARD
State	FLORIDA	State	FLORIDA
Location:	API#:	Location:	API#:
SEC	TWP	RGE	Elevation
Permanent Datum	PAD	Elevation	K.B.
Log Measured From	PAD	Elevation	D.F.
Drilling Measured From	PAD	Elevation	G.L.
Date	30-SEPT-2008	Run Number	TWO
Depth Driller	1350'	Depth Driller	1350'
Bottom Logged Interval	1350'	Bottom Logged Interval	1350'
Top Log Interval	CASING	Top Log Interval	CASING
Open Hole Size	3 3/4"	Type Fluid	WATER
Density / Viscosity	NA	Density / Viscosity	NA
Max. Recorded Temp.	54.6 DEFFG	Max. Recorded Temp.	54.6 DEFFG
Estimated Cement Top	NA	Estimated Cement Top	NA
Time Well Ready	ON ARRIVAL	Time Well Ready	ON ARRIVAL
Equipment Number	0000	Equipment Number	0000
Location	JUPITER	Location	JUPITER
Recorded By	LEE	Recorded By	LEE
Witnessed By	M. BLACK	Witnessed By	M. BLACK

<<< Fold Here >>>

All interpretations are opinions based on inferences from electrical or other measurements and we cannot and do not guarantee the accuracy or correctness of any interpretation, and we shall not, except in the case of gross or willful negligence on our part, be liable or responsible for any loss, costs, damages, or expenses incurred or sustained by anyone resulting from any interpretation made by any of our officers, agents or employees. These interpretations are also subject to our general terms and conditions set out in our current Price Schedule.

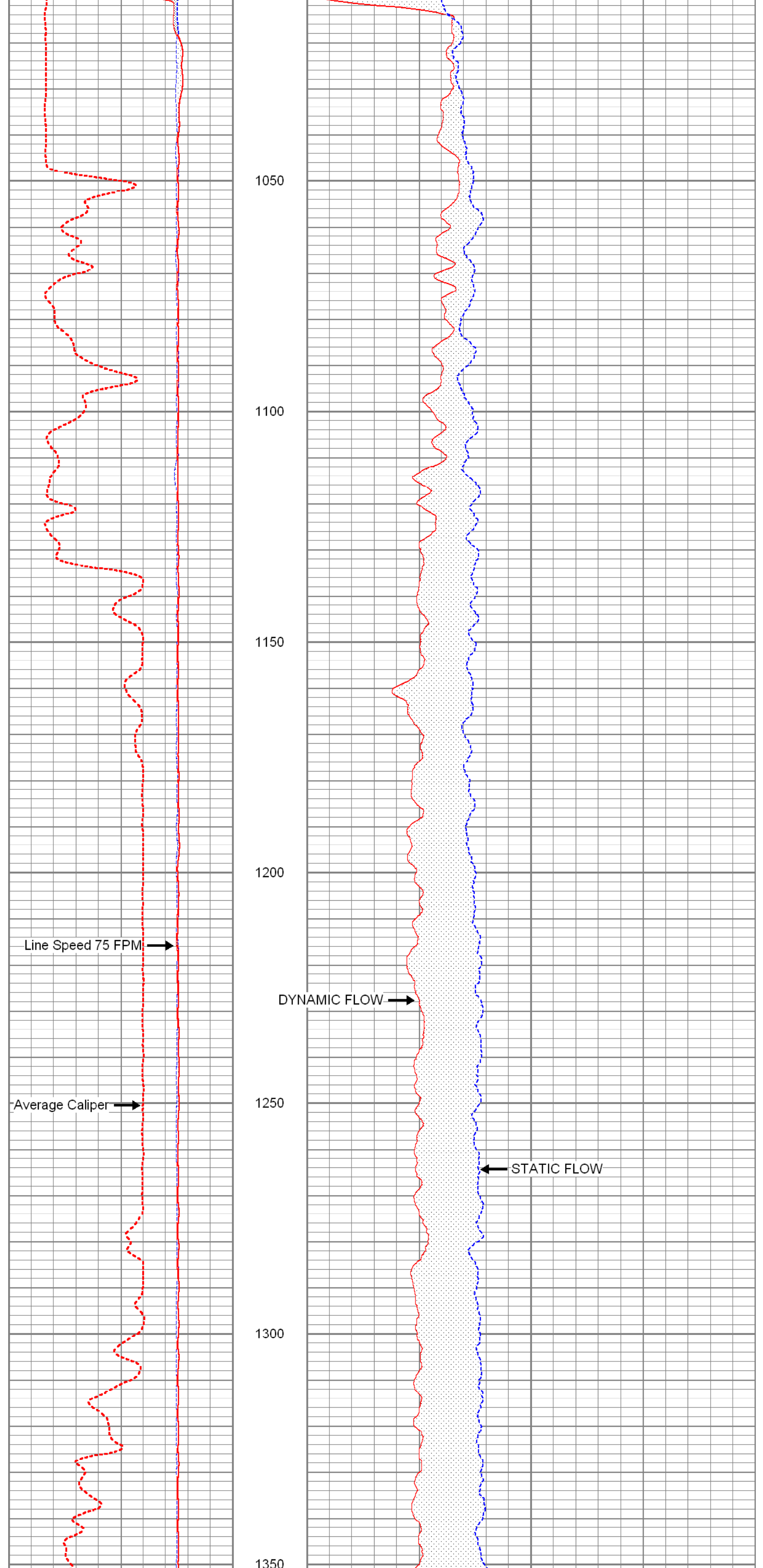
Comments

DHTVS
DIL/LL3/SP
FCT
XYC/GR

STATIC & DYNAMIC FLOW

Database File: f2.db
 Dataset Pathname: run2/FMD
 Presentation Format: flow_mg
 Dataset Creation: Tue Sep 30 09:34:52 2008 by Log Open-Cased 070814
 Charted by: Depth in Feet scaled 1:240

0	L.S STATIC DOWN (ft/min)	100	0	FLOWP (cps)	50
0	L.S DYNAMIC DOWN	100	0	FLOWPS (cps)	50
0	(ft/min)	100			
30	CALIPER AVERAGE (in)	50			



0	L.S STATIC DOWN (ft/min)	100	0	FLOWP (cps)	50
0	L.S DYNAMIC DOWN	100	0	FLOWPS (cps)	50
0	(ft/min)	100			
30	CALIPER AVERAGE (in)	50			

Sensor	Offset (ft)	Schematic	Description	Len (ft)	OD (in)	Wt (lb)
			CHD-SDSCHD (SDS) Cable Head	1.00	1.50	5.00
			CBLINLINE	3.00	1.50	10.00
			FLOWMETER-TITAN (TITAN_3") TITAN_3"	3.00	1.69	25.00
FLOWP	0.25					
FLOWN	0.25					

Dataset: f2.db: field/well/run2/FMD
 Total Length: 7.00 ft
 Total Weight: 40.00 lb
 O.D.: 1.69 in

