

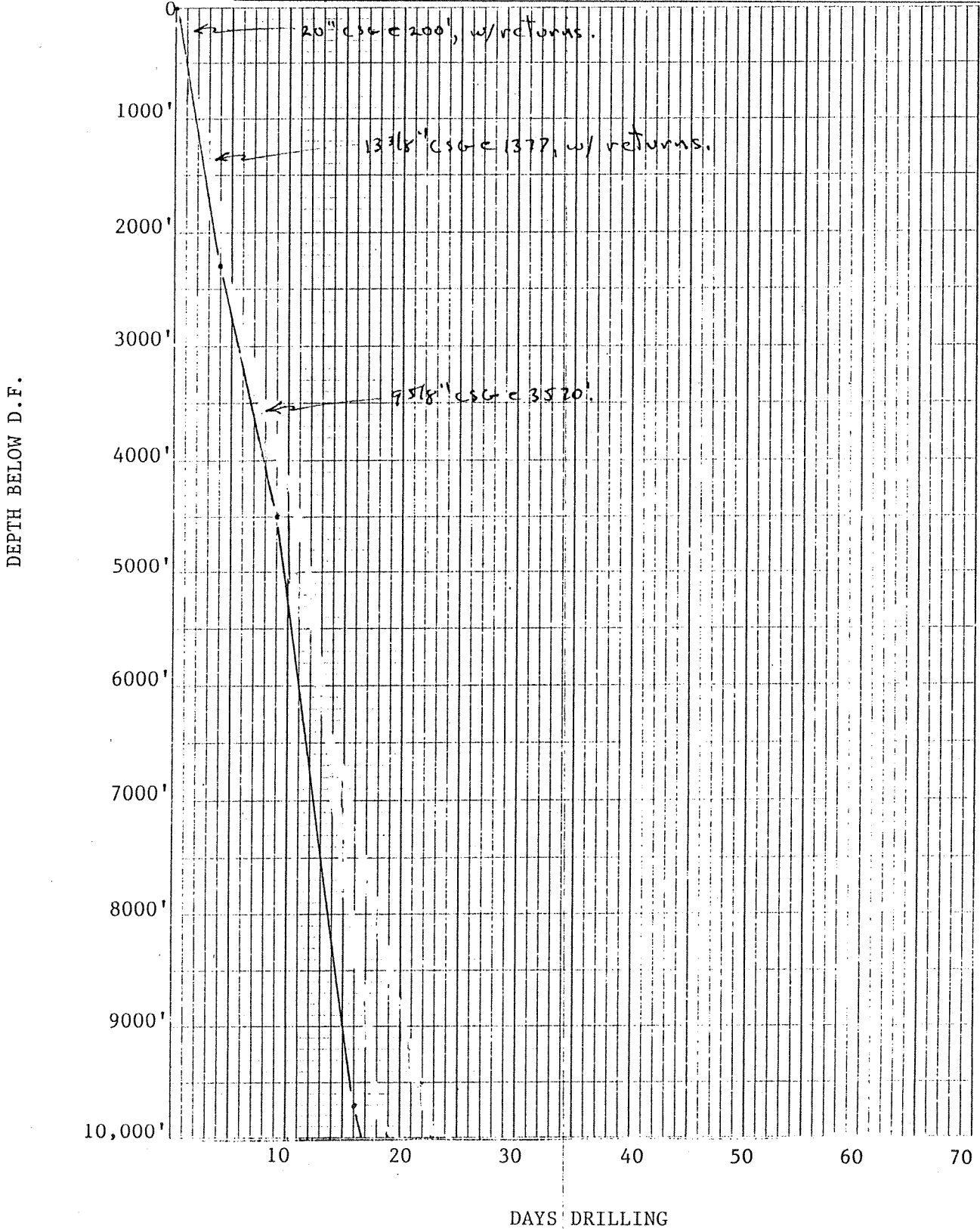
Well No. 564 Elevation G.L. 9.0' D.F. K.B. 25.35'

Location 1320' FEL, 600' FSL County Monroe

1 1 1 Sec. 14 T 54S R 33E TD 12,662'

Well or Owner's Name California Time/R. D. Reynolds 14-4 Ivan Axelson

Data Source Fort Myers O/G Well Files





# Schlumberger COMPENSATED FORMATION DENSITY LOG

401500 Gamma Ray  
COMPANY: GALLIFORNIA TIME PETROLEUM, INC., AND  
RAY D. REYNOLDS  
WELL: MRS. IAR AXELSON ET AL  
FIELD: WILD CAT - MONROE STATION  
COUNTY: MONROE STATE: FLORIDA  
Location: \_\_\_\_\_

COUNTY: MONROE FLA  
FIELD: WILD CAT - MONROE STATION  
COUNTY: MONROE STATE: FLORIDA  
Location: \_\_\_\_\_

DATE: 8-28-72  
LOG MEASURED FROM: R.K.B. 1535 FT. ABOVE PERM. TOP  
DIP: 3.38-72

DEPTH: 1535  
LOGGED INTERVAL: 1535-1552  
LOGGED INTERVAL: 1535-1552

DEPTH: 1535  
LOGGED INTERVAL: 1535-1552  
LOGGED INTERVAL: 1535-1552

DEPTH: 1535  
LOGGED INTERVAL: 1535-1552  
LOGGED INTERVAL: 1535-1552

DEPTH: 1535  
LOGGED INTERVAL: 1535-1552  
LOGGED INTERVAL: 1535-1552

DEPTH: 1535  
LOGGED INTERVAL: 1535-1552  
LOGGED INTERVAL: 1535-1552

EQUIPMENT DATA			
Run No.	PGP	PDH-D	PGH-A
1	EA-147	239	
2			
3			

CALIBRATION DATA			
Run No.	API Scale	Background CPS	Total CPS
1	0-100	50	350
2			
3			

LOGGING DATA			
Run No.	Depth	Speed Ft./Min.	Tc
1	12651	30	2
2			
3			

MUD DATA			
Run No.	Rm.	% Solids by Vol.	% Oil by Vol.
1	0.15	90	
2			
3			

Remarks: SERVICE ORDER 62563

All interpretations are opinions based on inferences from electrical or other measurements and we cannot, and do not, guarantee the accuracy or correctness of any interpretation, and we will not accept the liability of gross or willful negligence on our part, be liable or responsible for any loss, costs, damages or expenses incurred or authorized by anyone resulting from any interpretation made by any of our officers, agents or employees. These interpretations are also subject to Clause 7 of our General Terms and Conditions as set out in our current Price Schedule.

**CALIPER**  
HOLE DIAM. IN INCHES

6 16

**GAMMA RAY**  
API UNITS

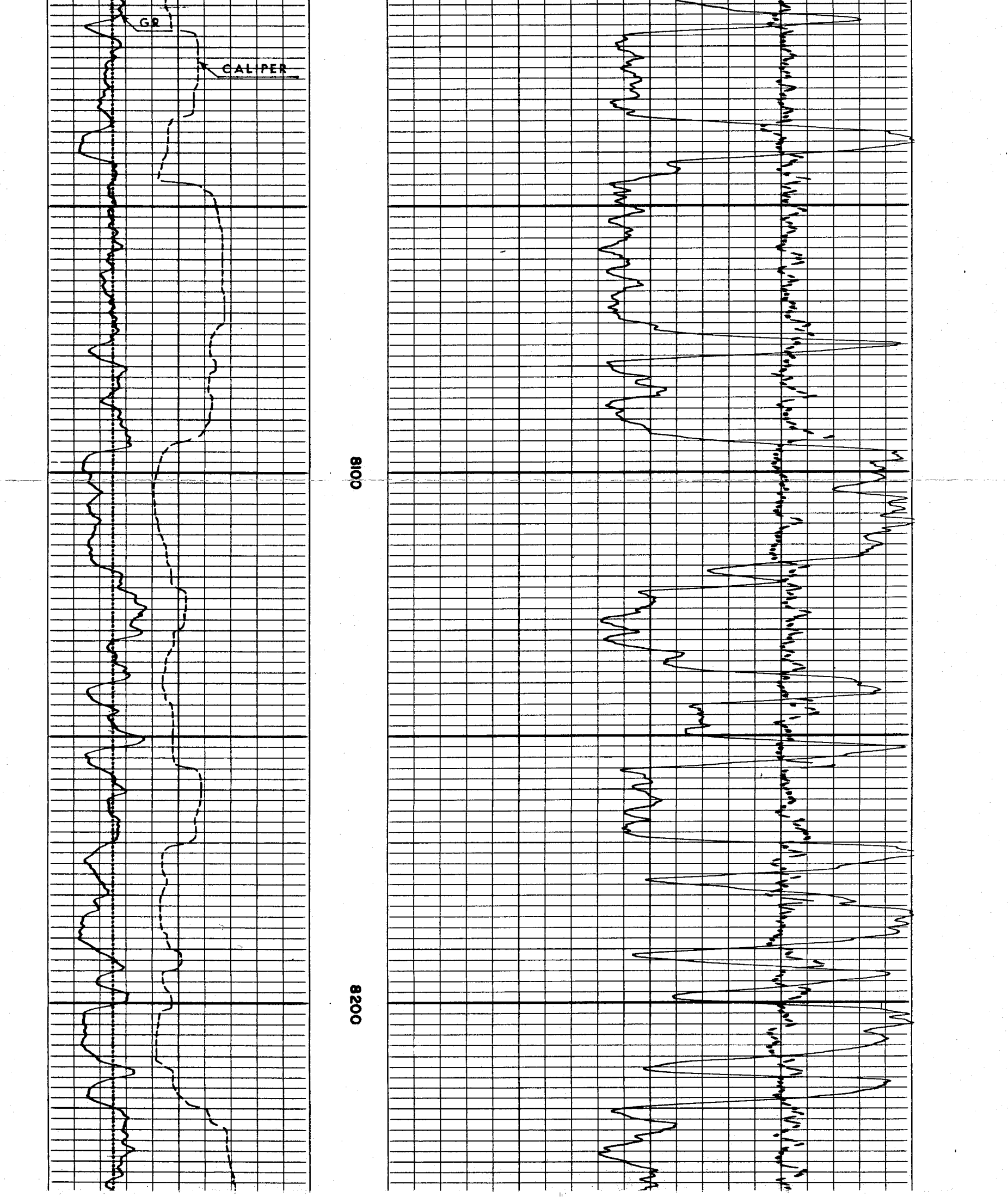
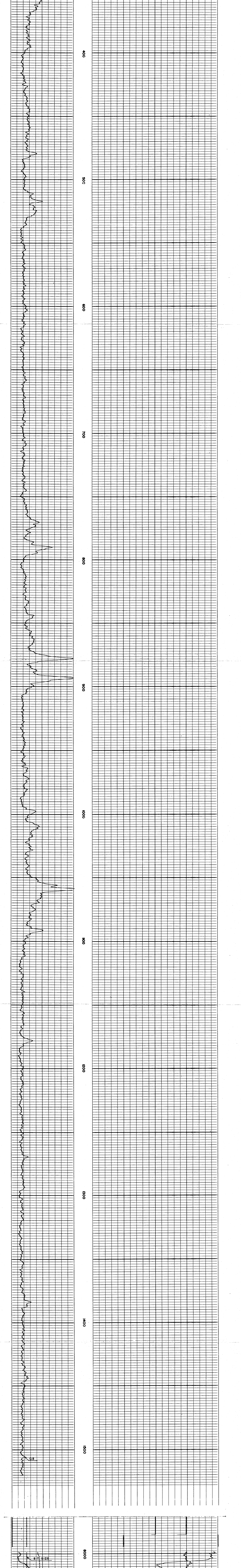
0 100

**BULK DENSITY**  
GRAMS/CC.

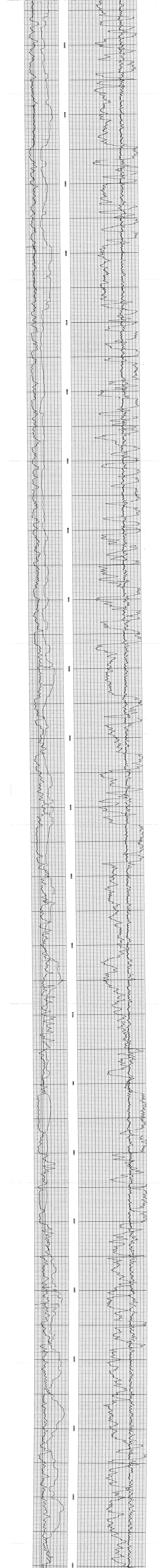
2.0 2.5 3.0

**CORRECTION**  
GRAMS/CC.

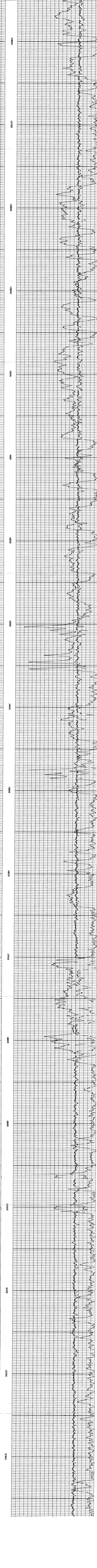
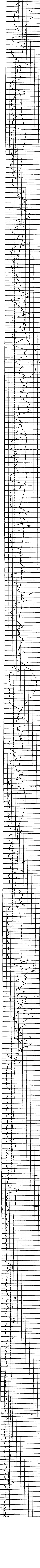
0 25





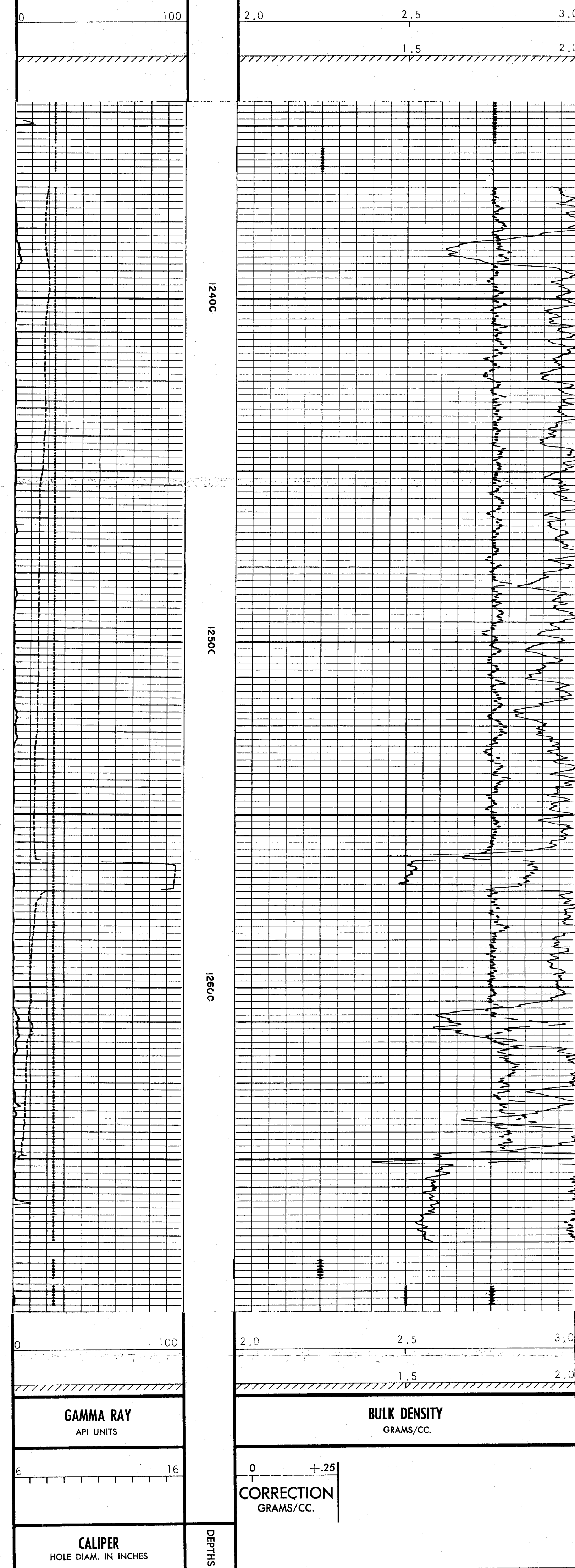
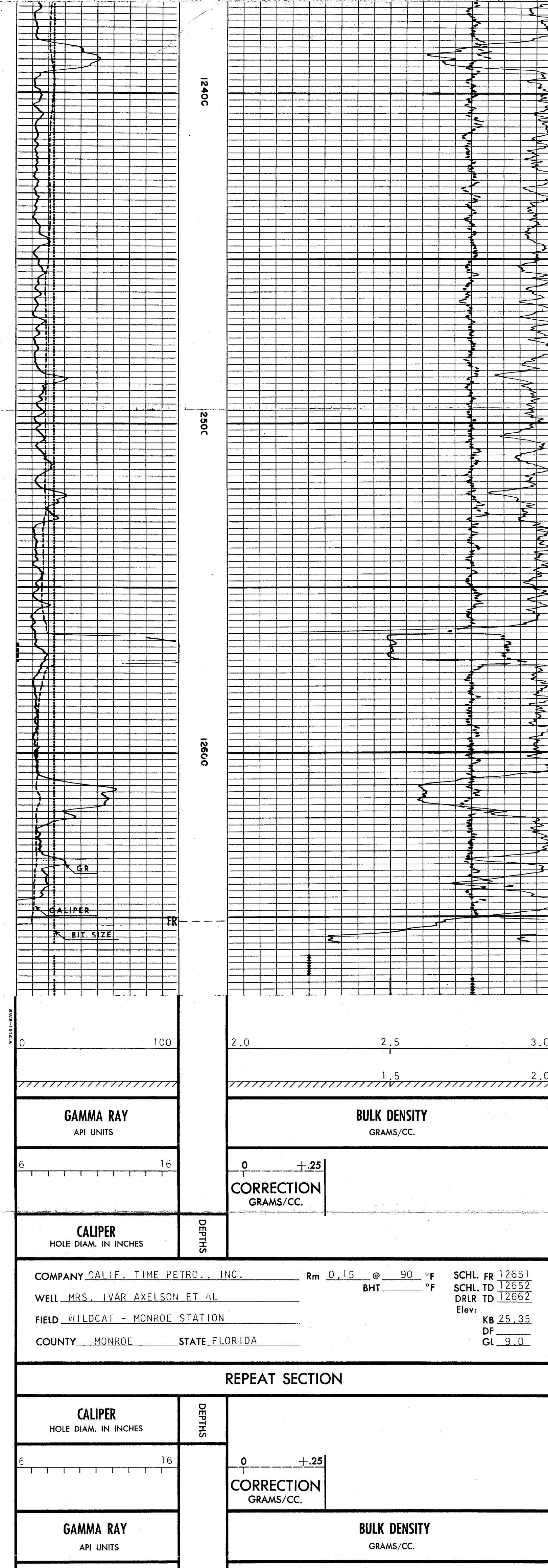




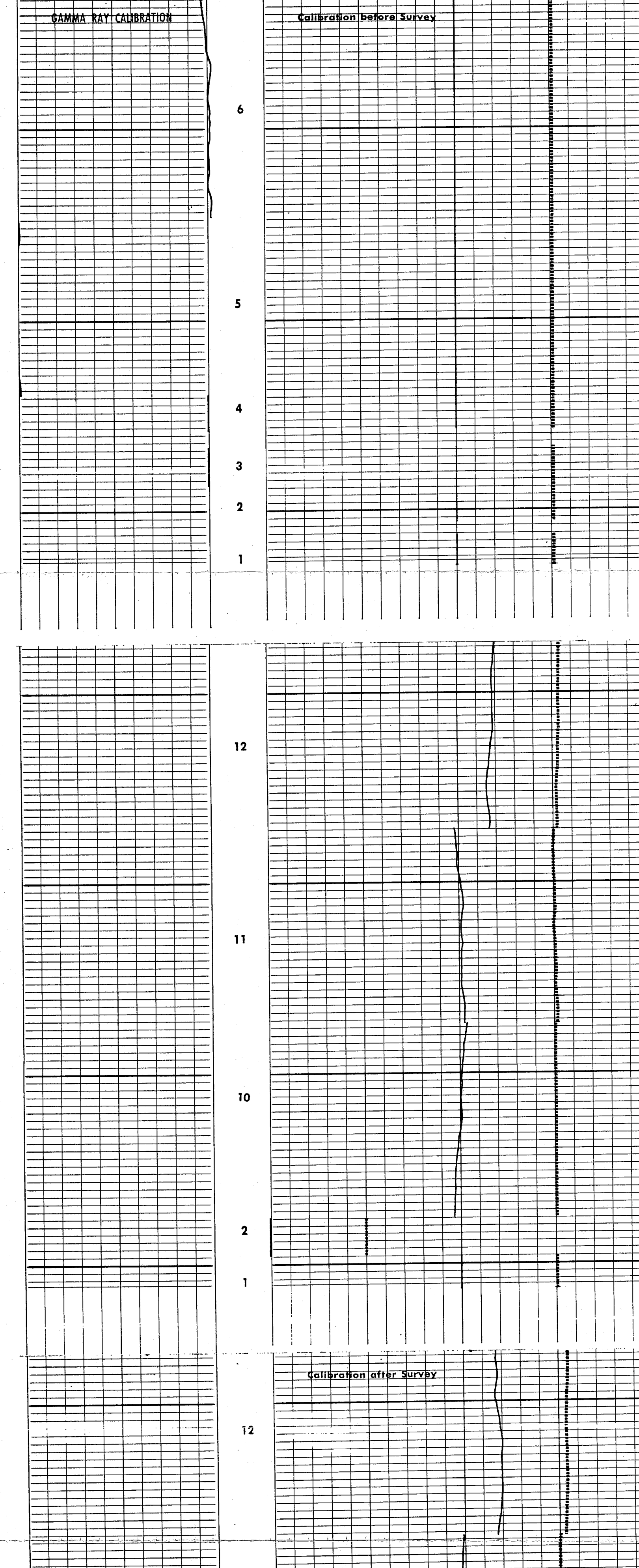


Handwritten notes in the right margin of the ECG strip, providing clinical observations and patient information. The notes are written in cursive and include details such as patient name, date, time, and specific findings related to the ECG tracing.

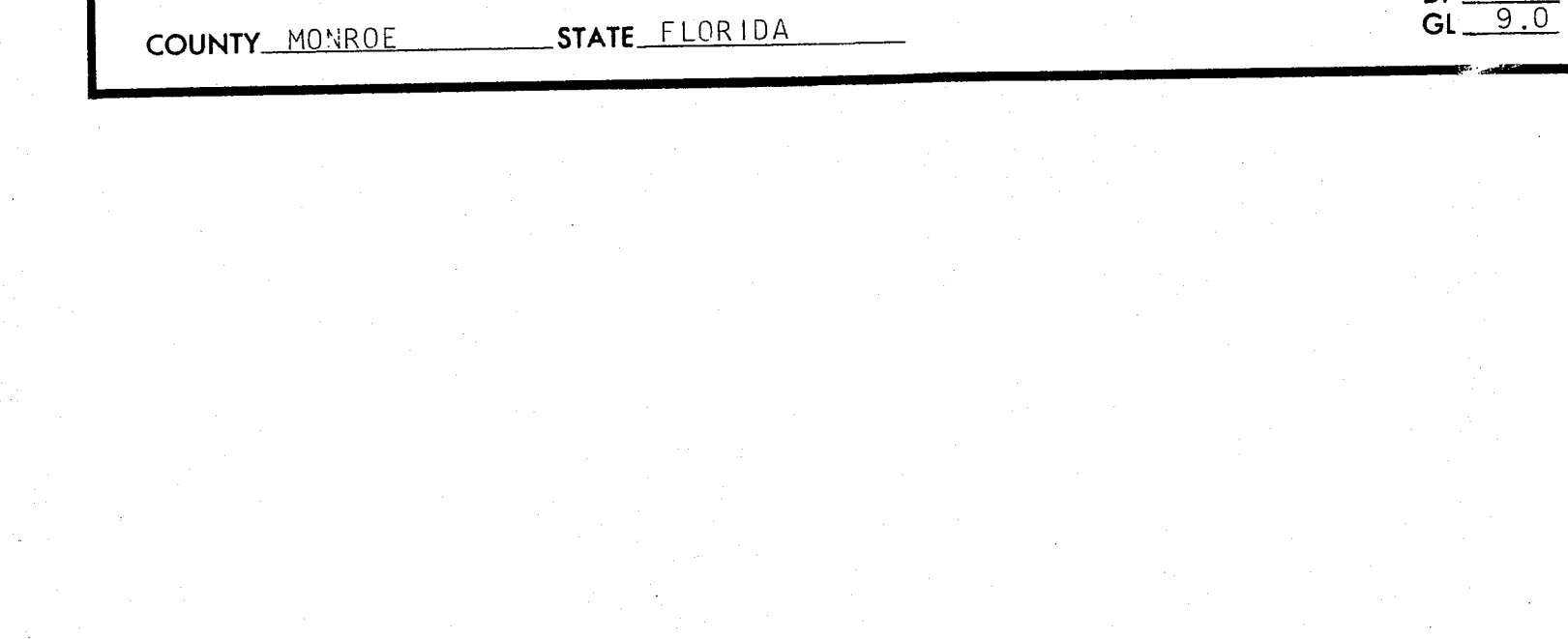
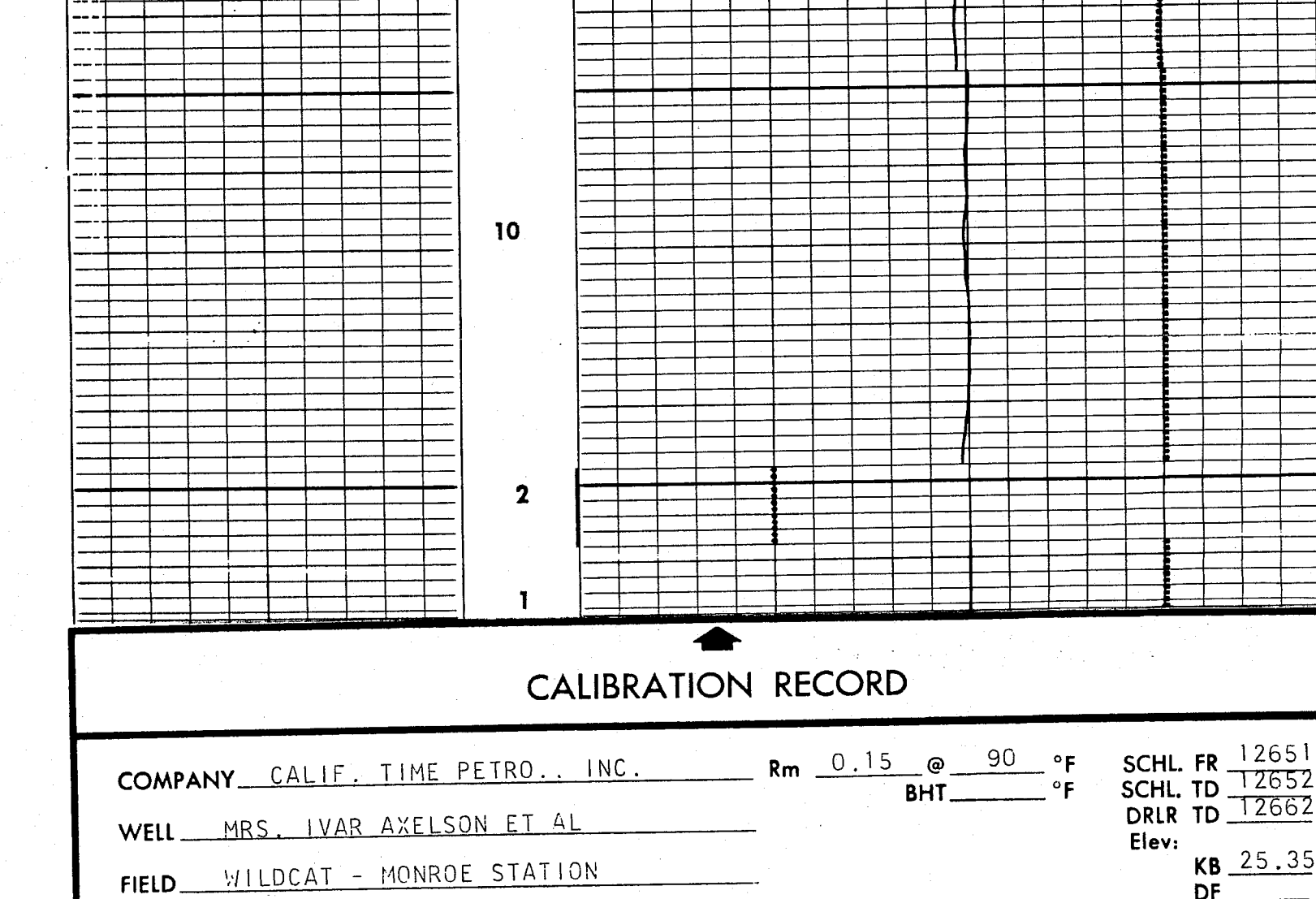




REPEAT SECTION



CALIBRATION RECORD



CALIBRATION RECORD

COMPANY CALIF. TIME PETRO., INC. Rm 0.15 @ 90 °F SCHL. FR 12651  
WELL MRS. IVAR AXELSON ET AL. BHT °F SCHL. TD 12652  
FIELD WILDCAT - MONROE STATION Elev. DRIR TD 12662  
COUNTY MONROE STATE FLORIDA KB 25.35  
DF  
CL 9.0