



# DUAL INDUCTION LOG

Company: Seacoast Utility Authority  
Well: NPB-1B  
Field: North Palm Beach  
County: Palm Beach  
State: Florida  
Country: USA

Company	Seacoast Utility Authority
Well	NPB-1B
Field	North Palm Beach
County	Palm Beach
State	Florida
Country	USA
Location	Richard Road Water Treatment Plant North Palm Beach Waterfield Expansion J.L. Gschlitzers Jr. Rd
AP#	
SEC	TYPE RSG
Permanent Datum	G.L.
Log Measured From	G.L.
Drilling Measured From	G.L.
Date	9-MAY-2013
Run Number	ONE
Depth Driller	205
Depth Logger	204
Depth Logger Interval	202
Tool Joint Interval	8
Open Hole Size	7.875
Type Fluid	MUD
Density / Viscosity	NANA
Max. Recorded Temp.	NA
Estimated Cement Top	16:00:59/2013
Time Well Ready	16:30:59/2013
Time Logger on Bottom	16:30:59/2013
Equipment Number	MV GS-1
Equipment Serial Number	5
Recorded By	S. Miller, C. Miller
Witnessed By	A. Giuliano (U/LA)
Run Number	ONE
Bit	7.875"
From	8
To	205
Size	8"
Weight	
From	
To	
Recorded By	J. Friedrichs (U/LA)
Witnessed By	Kyle (ACS)
Run Number	ONE
Bit	7.875"
From	8
To	205
Size	8"
Weight	
From	
To	
Recorded By	J. Friedrichs (U/LA)
Witnessed By	Kyle (ACS)
Run Number	ONE
Bit	7.875"
From	8
To	205
Size	8"
Weight	
From	
To	
Recorded By	J. Friedrichs (U/LA)
Witnessed By	Kyle (ACS)

Casing Record	
Surface String	
Prot. String	
Production String	
Logger No.	2013063
Wireline No.	248694745
File Name	wseac-1b.db
Print	*FIELD PRINT*

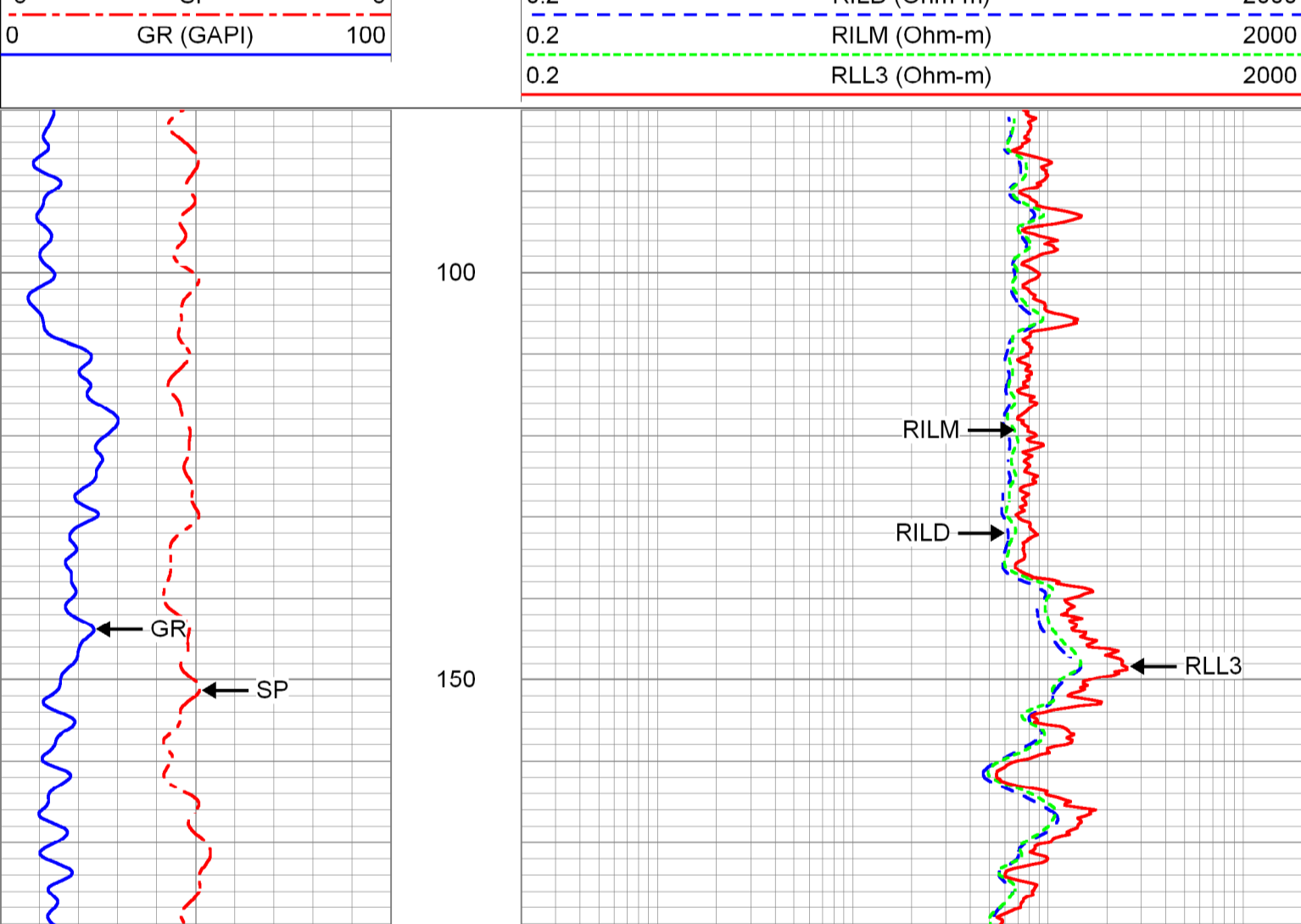
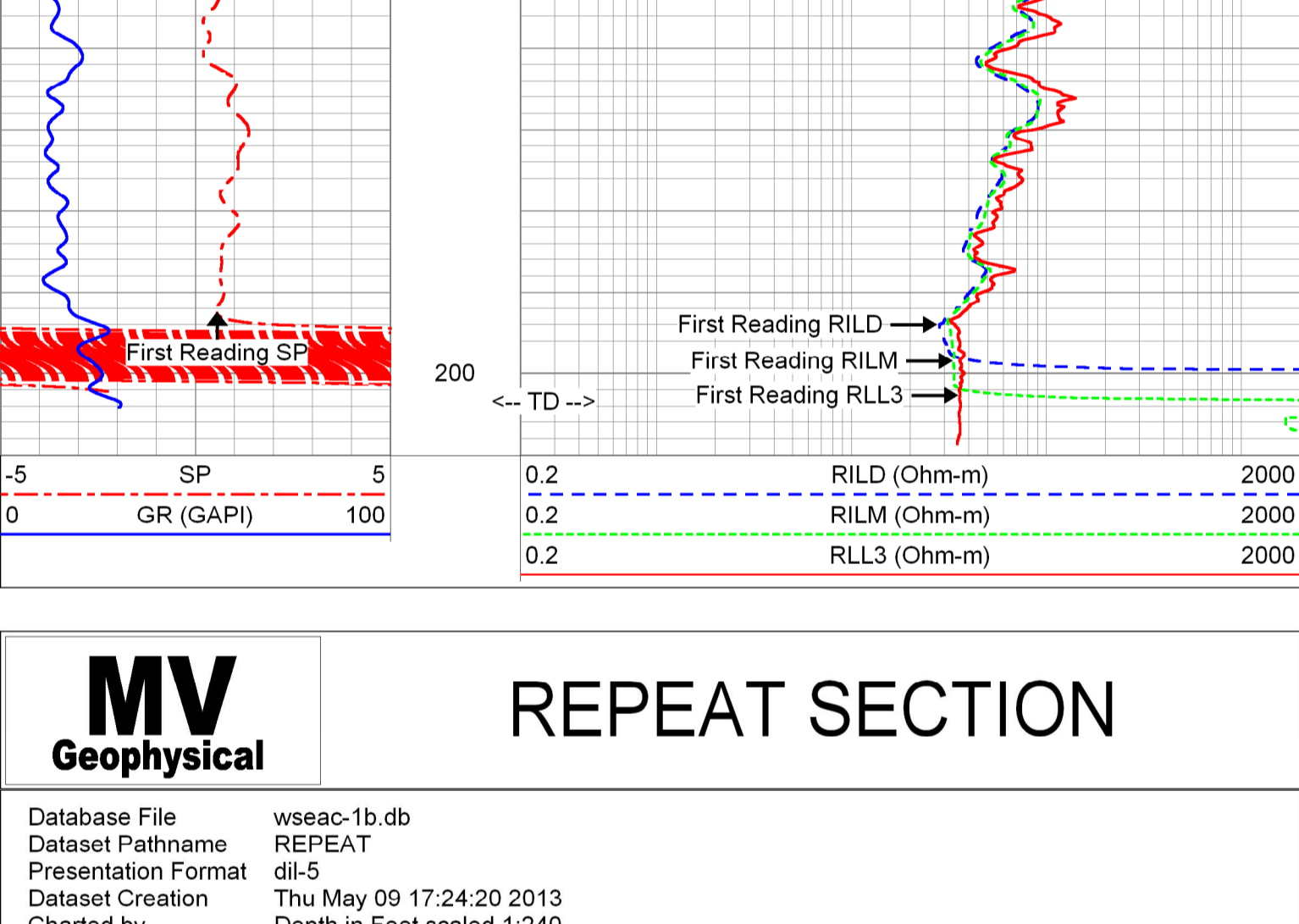
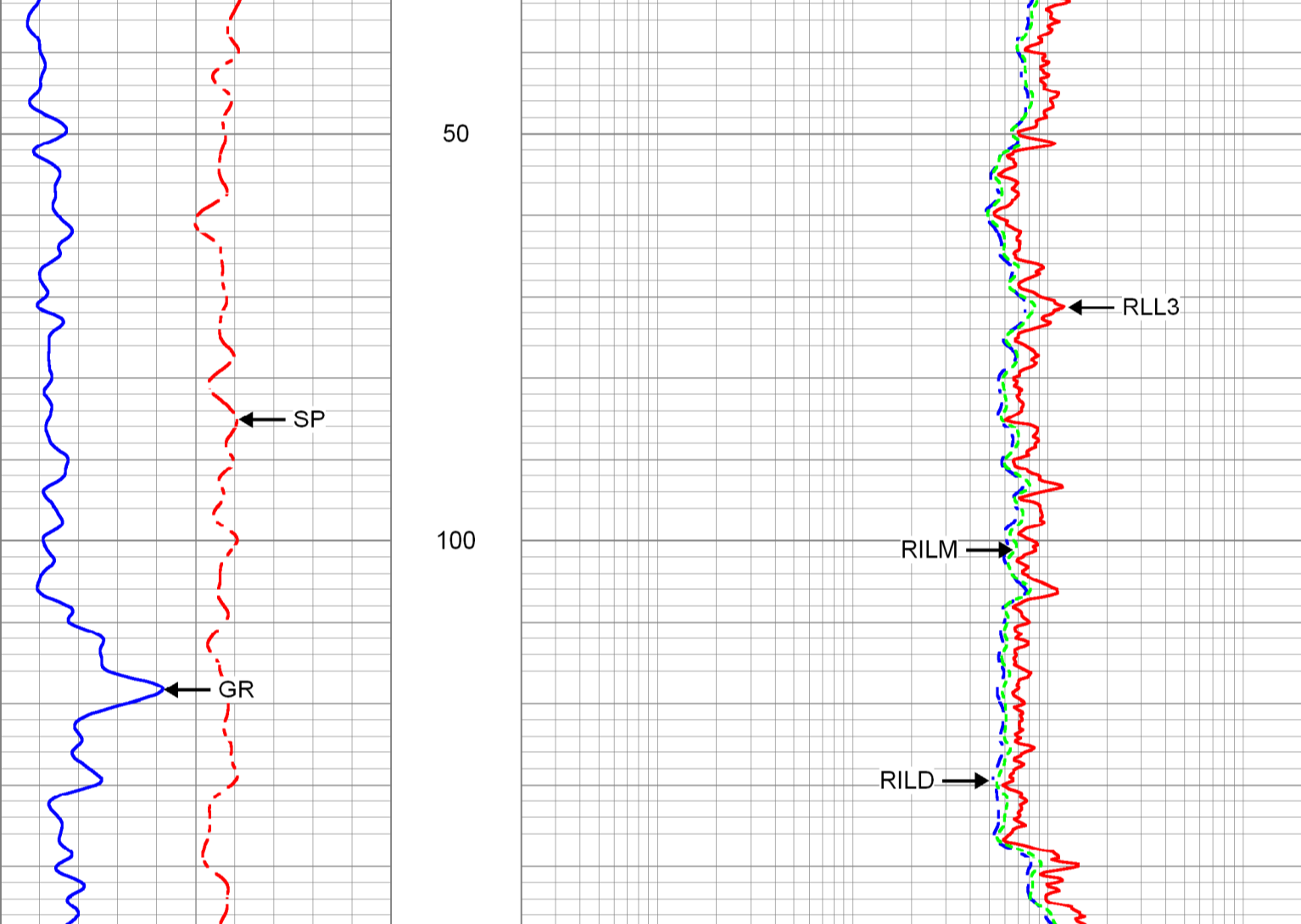
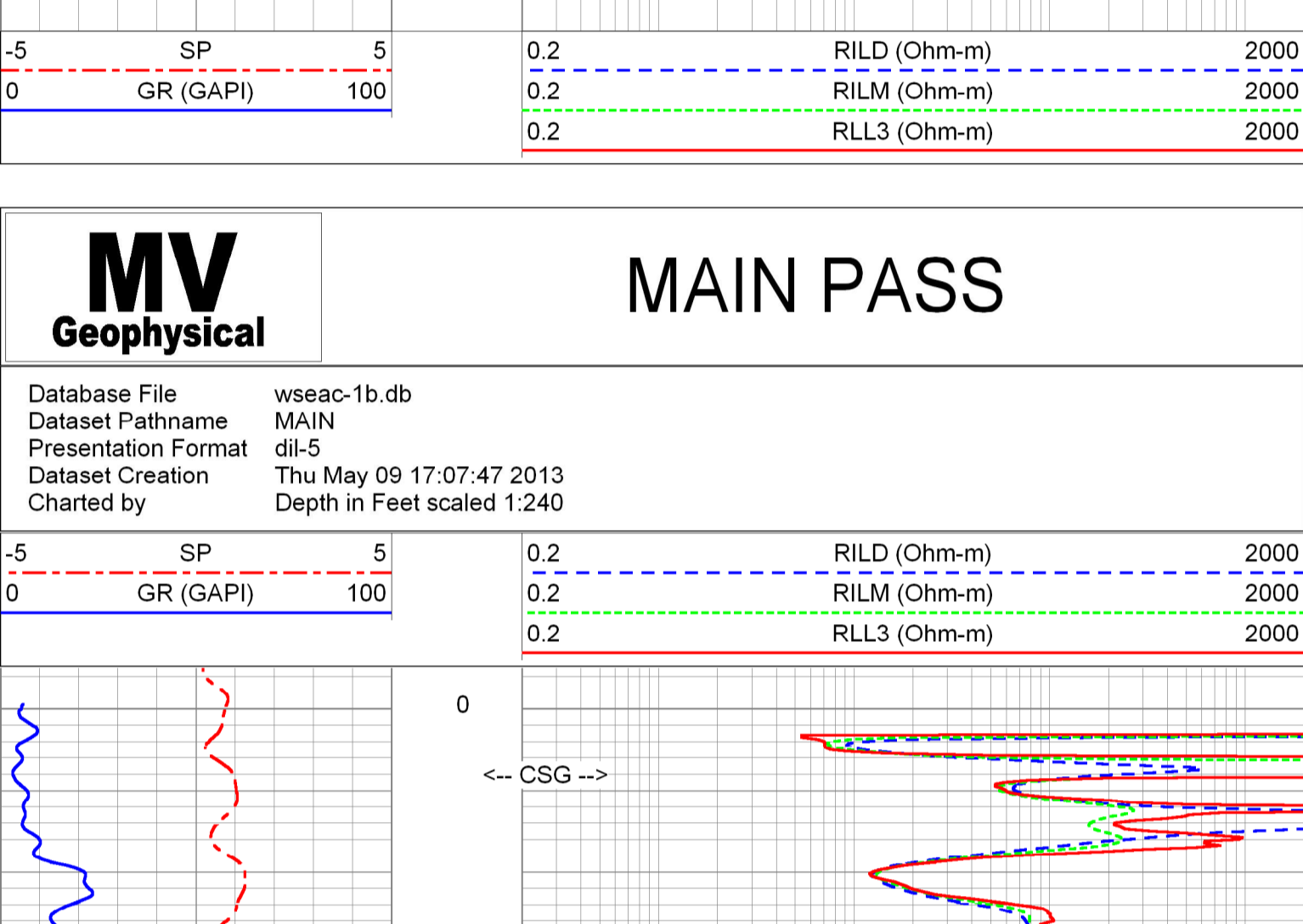
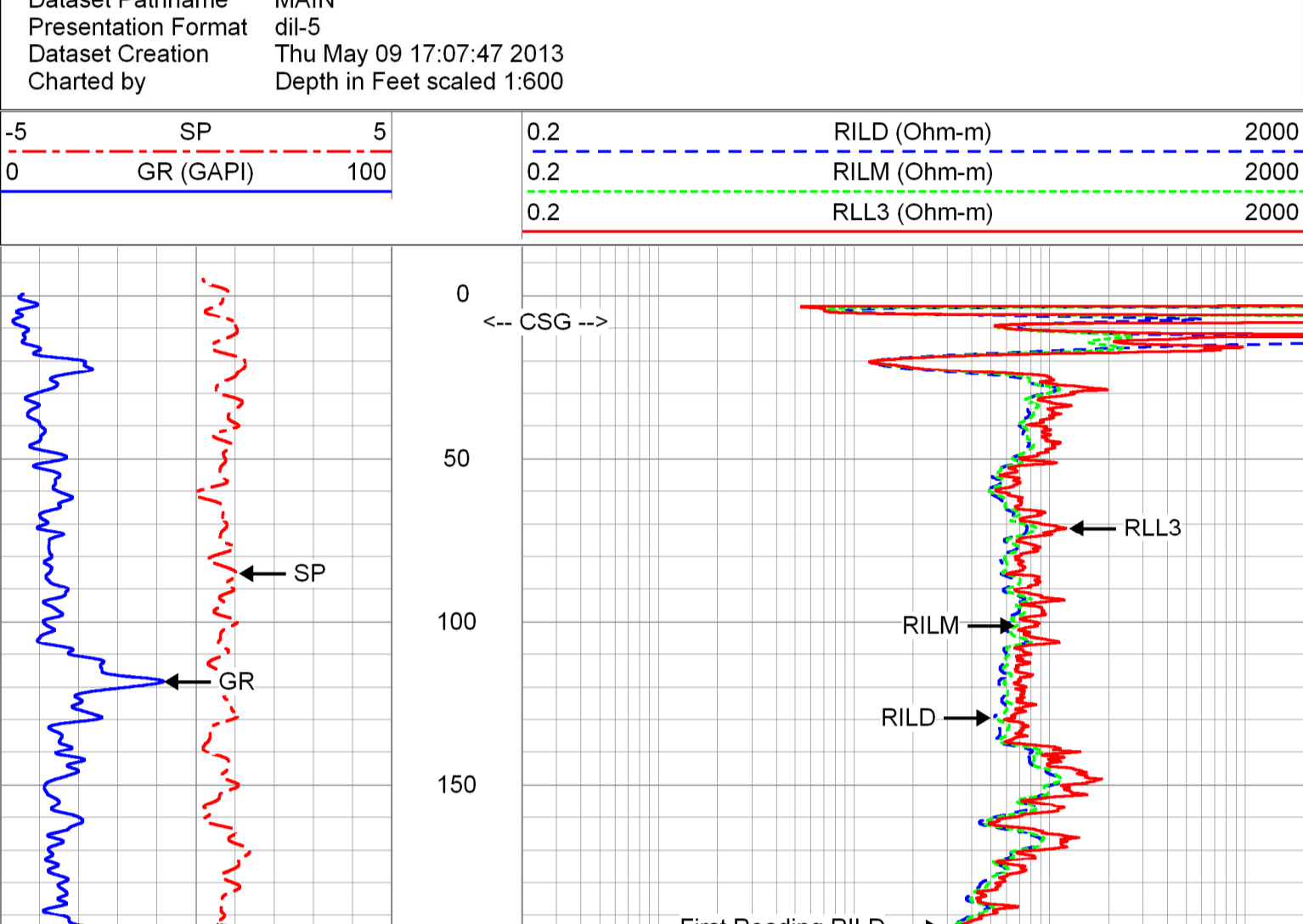
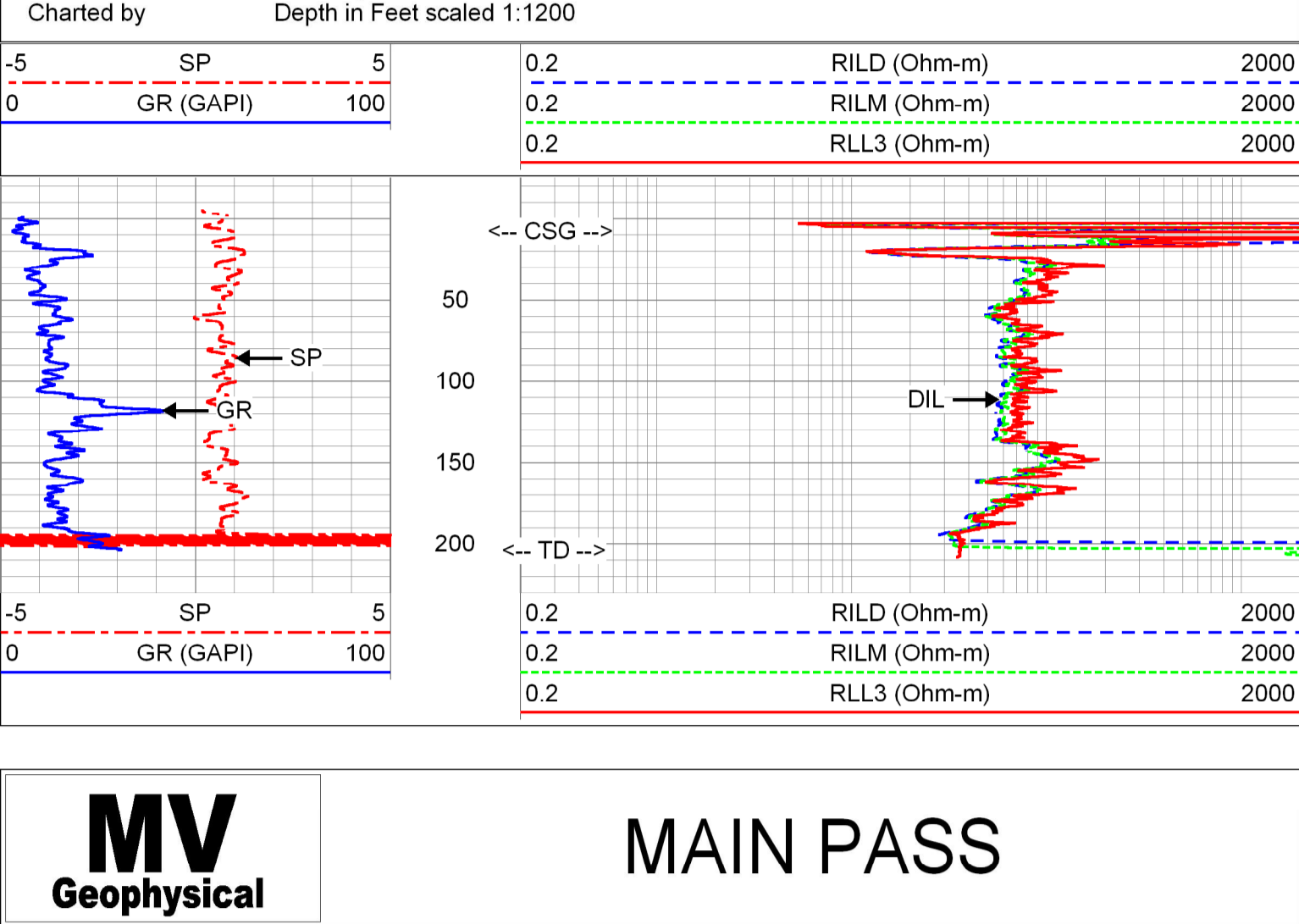
<<< Fold Here >>>

All interpretations are opinions based on inferences from electrical or other measurements and we cannot and do not guarantee the accuracy or correctness of any interpretation, and we shall not, except in the case of gross or willful negligence on our part, be liable or responsible for any loss, costs, damages, or expenses incurred or sustained by anyone resulting from any interpretation made by any of our officers, agents or employees. These interpretations are also subject to our general terms and conditions set out in our current Price Schedule.

Comments

Rm=6.432 ohm-m @ 91.2 degF

Drilling Contractors: Wells & Water Systems, Inc.  
and American Drilling Services, Inc.



Database File	wseac-1b.db
Dataset Pathname	pass7
Dataset Creation	Thu May 09 16:54:42 2013

Dual Induction Calibration Report									
Serial-Model:	5390-R								
Surface Cal Performed:	Wed Apr 21 11:17:23 2010								
Downhole Cal Performed:	Wed Apr 21 11:04:55 2010								
After Survey Verification Performed:	Wed Apr 21 11:04:55 2010								
Surface Calibration									
Loop:	Readings			References		Results			
	Air	Loop	V	Air	Loop	m	b		
Deep	0.050	0.645	V	0.000	400.000	672.269	-33.613		
Medium	0.018	0.735	V	0.000	464.000	647.120	-11.545		
Internal:	Zero			Cal		m		b	
	Deep	Medium	Shallow	Zero	Cal	m	b		
Deep	0.011	0.641	V	0.000	400.000	634.921	-6.984		
Medium	0.005	0.739	V	0.000	464.000	632.408	-3.370		
Downhole Calibration									
Internal:	Readings			References		Results			
	Zero	Cal	V	Zero	Cal	m	b		
Deep	-43.158	78.288	mmho/m	-42.562	77.983	0.993	0.275		
Medium	-9.475	466.701	mmho/m	-8.097	466.698	0.997	1.351		
Shallow	2.516	0.025	V	494.500	2.000	197.687	-2.966		
After Survey Verification									
Internal:	Readings			Targets		Results			
	Zero	Cal	V	Zero	Cal	m'	b'		
Deep	0.000	0.000	mmho/m	-43.158	78.288	0.993	0.275		
Medium	0.000	0.000	mmho/m	-9.475	466.701	0.997	1.351		
Shallow	0.000	0.000	Ohm-m	494.500	2.000	1.000	0.000		

Sensor	Offset (ft)	Schematic	Description	Length (ft)	O.D. (in)	Weight (lb)
SP	10.60		R (5390)	20.90	4.00	345.00
CILD	10.60					
CILM	6.80					
RLL3	1.70					

Dataset: wseac-1b.db: field/well/run/1/pass7  
Total length: 20.90 ft  
Total weight: 345.00 lb  
O.D.: 4.00 in