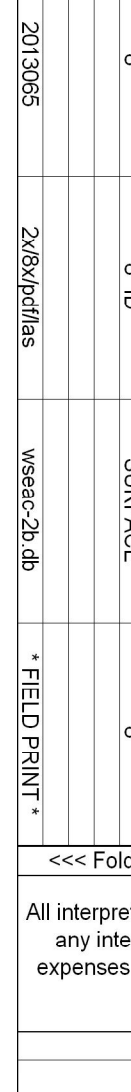


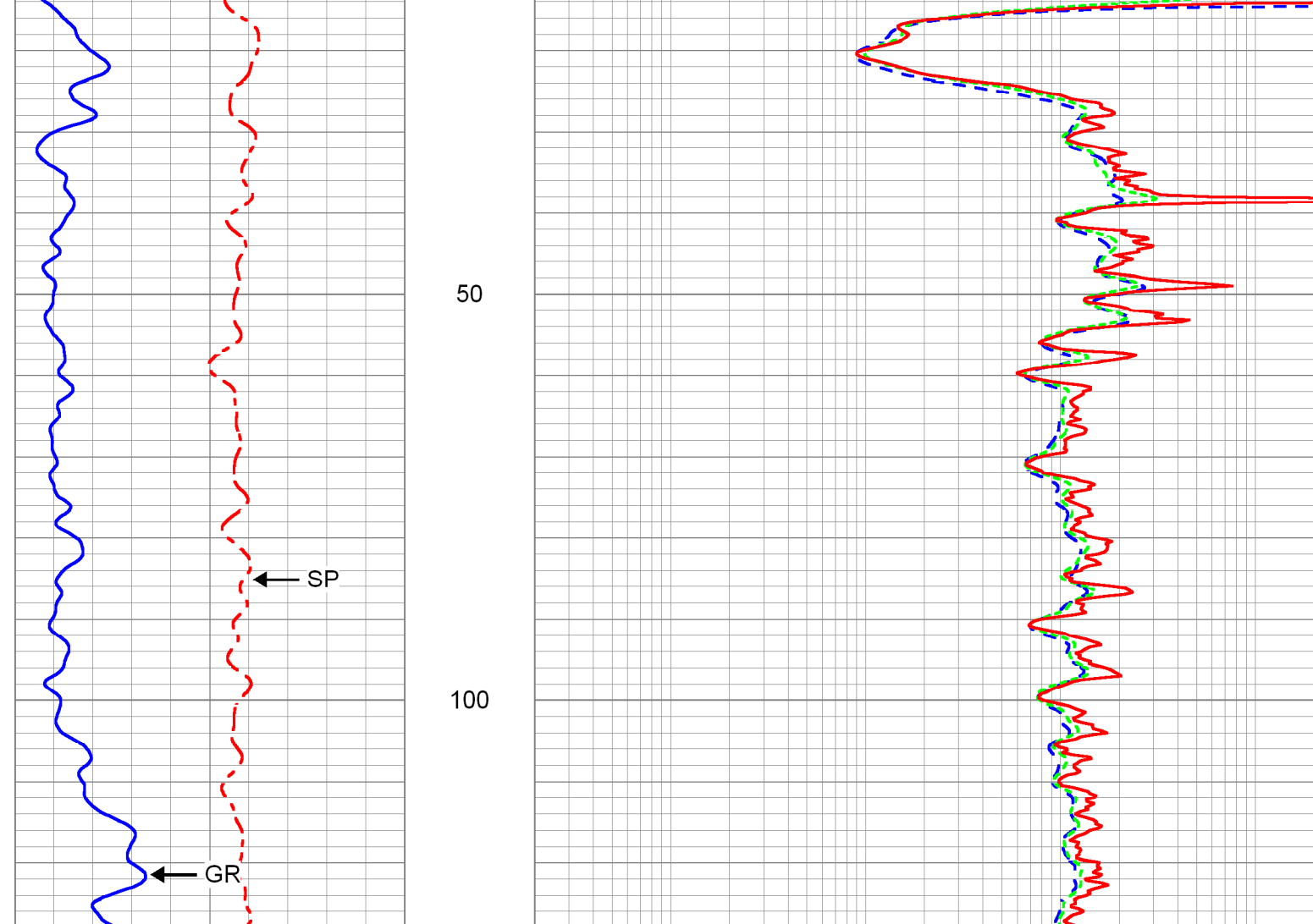
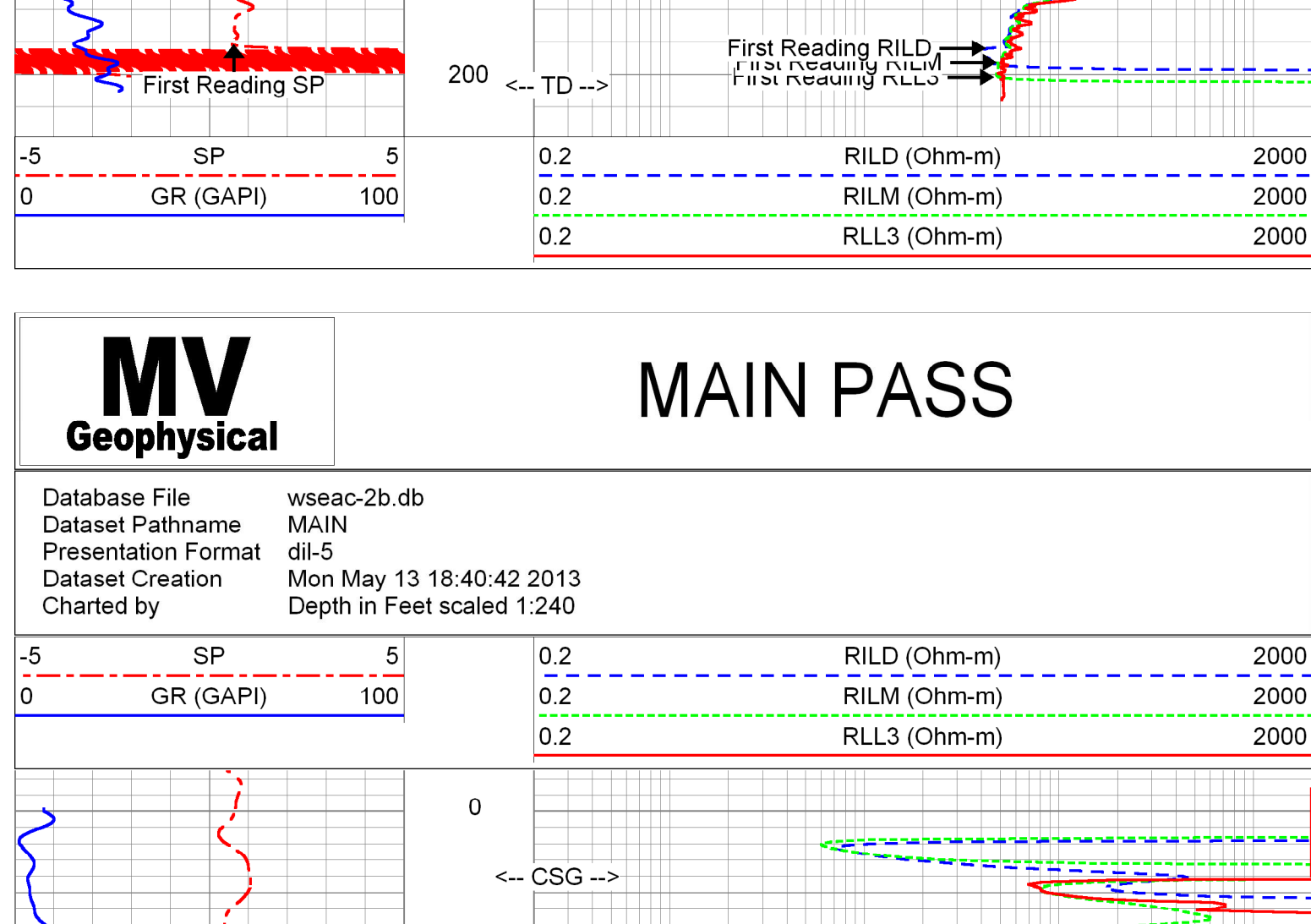
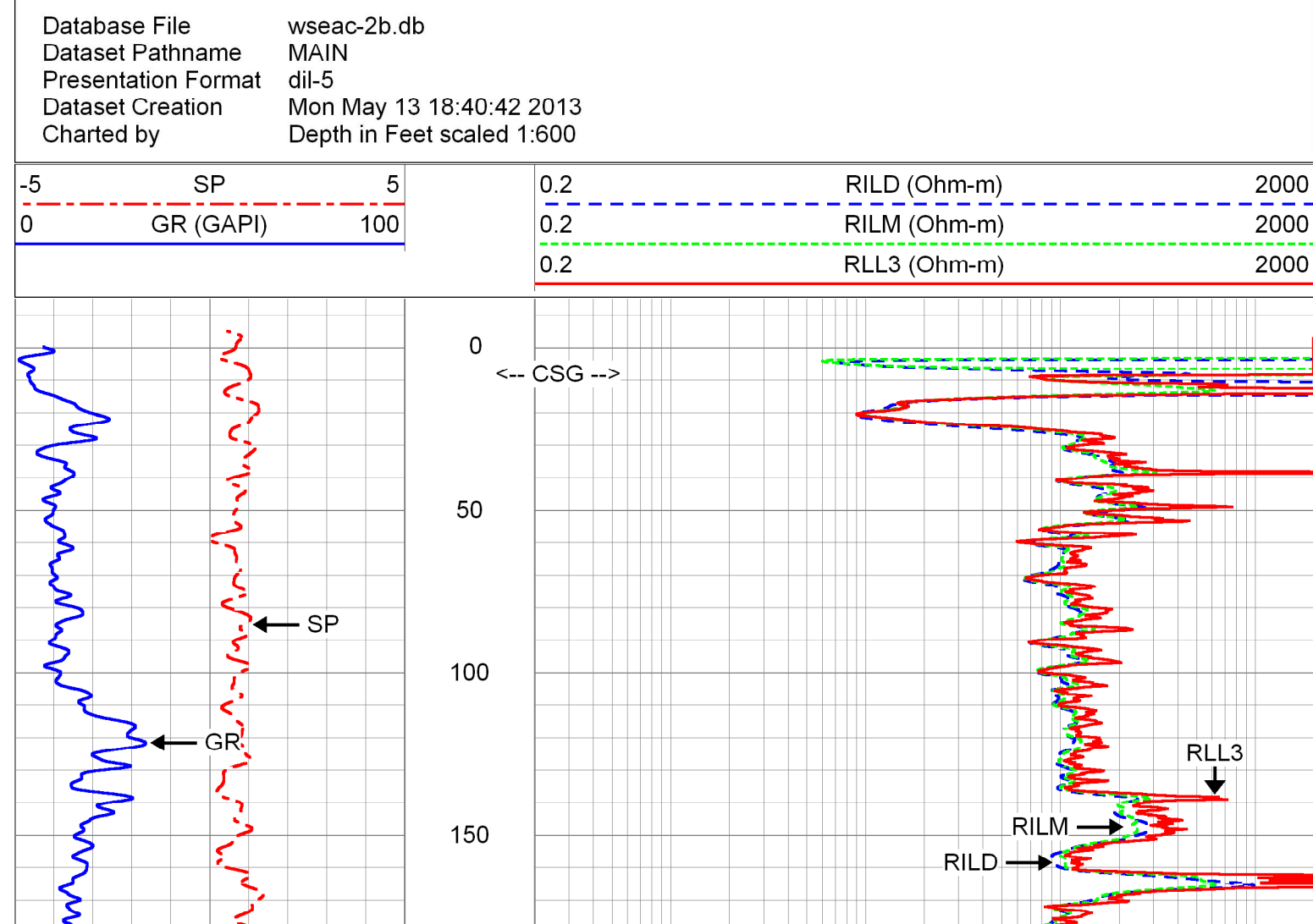
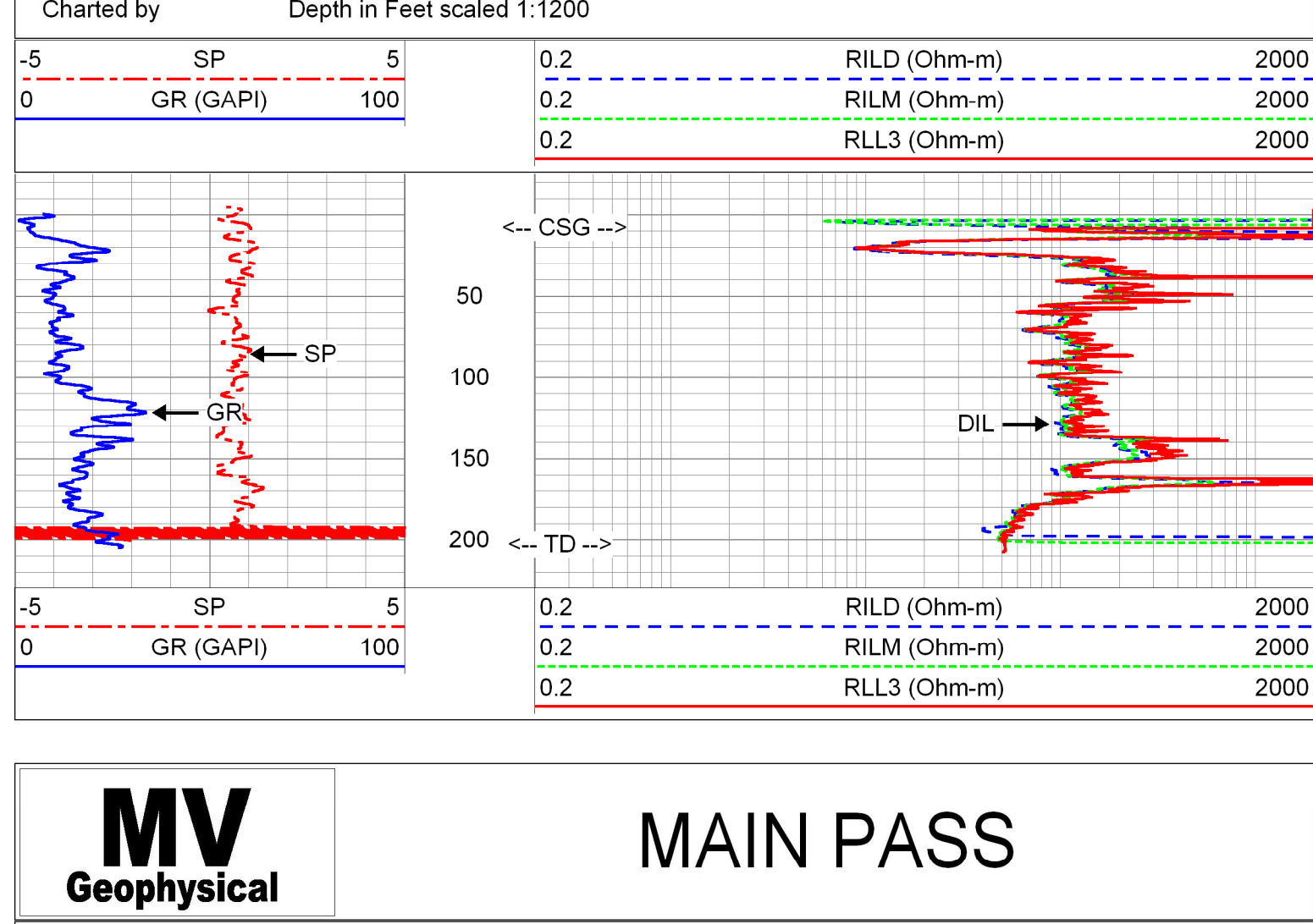
|   |   |  |  |  |                   |   |
|---|---|--|--|--|-------------------|---|
|    |   | <b>DUAL INDUCTION</b><br><b>LL3 / SP</b><br><b>LOG</b>   |  | Company: Seacoast Utility Authority<br>Well: NPB-2B<br>Field: North Palm Beach<br>County: Palm Beach<br>State: Florida<br>Country: USA   |                   |   |
|   |   |  |  | Location: Richard Road Water Treatment Plant<br>North Palm Beach Wellfield Expansion<br>JLN Gas Services Inc.<br>SEC: JLN<br>Log Measured From: G.L.<br>Drilling Measured From: G.L. |                   | Other Services:<br>XYGR<br>DL/SP<br>Elevation: G.L.<br>D.F.: G.L. |
| Run Number: ONE<br>Date: 13-MAY-2013<br>Depth: 205<br>Depth Logger: 205<br>Depth on Log: 205<br>Open Hole Size: 7.875<br>Type Fluid: MUD<br>Density / Viscosity: N/A<br>Max. Recorded Temp: N/A<br>Estimated Cement Top: NA | Time Well Ready: 17:00 5/13/2013<br>Time Logger on Bottom: 18:00 5/13/2013<br>Equipment Number: MW521<br>Recorder: S. Miller, Miller<br>Recorded By: A. Giuliano (U.A.)<br>Witnessed By: (Kyle ADS) | Borehole Record:<br>Bit: 7.875<br>From: 8<br>To: 205<br>Size: 8<br>Weight: From<br>Tiding Record: From<br>To | Casing Record:<br>Surface String: 8" ID<br>Prof. String: 8" ID<br>Production String: 8" ID<br>Size: 8" ID<br>Weight: 8" ID<br>Top SURFACE<br>Bottom 8" | Liner No: 2013095<br>Liner: 2x8bu/2x15as<br>wseac-2b.db<br>*FIELD PRINT*   | <<< Fold Here >>> |   |

All interpretations are opinions based on inferences from electrical or other measurements and we cannot and do not guarantee the accuracy or correctness of any interpretation, and we shall not, except in the case of gross or willful negligence on our part, be liable or responsible for any loss, costs, damages, or expenses incurred or sustained by anyone resulting from any interpretation made by any of our officers, agents or employees. These interpretations are also subject to our general terms and conditions set out in our current Price Schedule.

Comments

Rm=7.154 ohm-m @ 90.2 degF

Drilling Contractors: Wells & Water Systems, Inc. and American Drilling Services, Inc.



Calibration Report

Database File: wseac-2b.db  
 Dataset Pathname: pass7  
 Dataset Creation: Mon May 13 18:22:24 2013

Dual Induction Calibration Report

Serial-Model: 5390-R  
 Surface Cal Performed: Wed Apr 21 11:17:23 2010  
 Downhole Cal Performed: Wed Apr 21 11:04:55 2010  
 After Survey Verification Performed: Wed Apr 21 11:04:55 2010

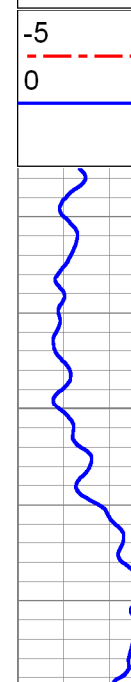
| Surface Calibration |       |       |   | References |         |        |         | Results |  |
|---------------------|-------|-------|---|------------|---------|--------|---------|---------|--|
| Loop:               | Air   | Loop  |   | Air        | Loop    |        | m       | b       |  |
| Deep                | 0.050 | 0.645 | V | 0.000      | 400.000 | mmho/m | 672.269 | -33.613 |  |
| Medium              | 0.018 | 0.735 | V | 0.000      | 464.000 | mmho/m | 647.120 | -11.545 |  |
| Internal:           |       |       |   | References |         |        |         | Results |  |
|                     | Zero  | Cal   |   | Zero       | Cal     |        | m       | b       |  |
| Deep                | 0.011 | 0.641 | V | 0.000      | 400.000 | mmho/m | 634.921 | -6.984  |  |
| Medium              | 0.005 | 0.739 | V | 0.000      | 464.000 | mmho/m | 632.408 | -3.370  |  |

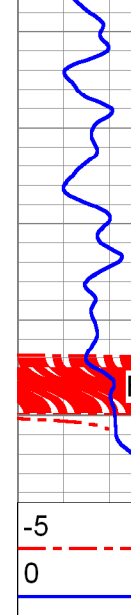
| Downhole Calibration |         |         |        | References |         |        |         | Results |  |
|----------------------|---------|---------|--------|------------|---------|--------|---------|---------|--|
| Internal:            | Zero    | Cal     |        | Zero       | Cal     |        | m       | b       |  |
| Deep                 | -43.158 | 78.288  | mmho/m | -42.562    | 77.983  | mmho/m | 0.993   | 0.275   |  |
| Medium               | -9.475  | 466.701 | mmho/m | -8.097     | 466.698 | mmho/m | 0.997   | 1.351   |  |
| Shallow              | 2.516   | 0.025   | V      | 494.500    | 2.000   | Ohm-m  | 197.689 | -2.967  |  |

| After Survey Verification |       |       |        | Targets |         |        |       | Results |  |
|---------------------------|-------|-------|--------|---------|---------|--------|-------|---------|--|
| Internal:                 | Zero  | Cal   |        | Zero    | Cal     |        | m'    | b'      |  |
| Deep                      | 0.000 | 0.000 | mmho/m | -43.158 | 78.288  | mmho/m | 0.993 | 0.275   |  |
| Medium                    | 0.000 | 0.000 | mmho/m | -9.475  | 466.701 | mmho/m | 0.997 | 1.351   |  |
| Shallow                   | 0.000 | 0.000 | Ohm-m  | 494.500 | 2.000   | Ohm-m  | 1.000 | 0.000   |  |

| Sensor | Offset (ft) | Schematic   | Description | Length (ft) | O.D. (in) | Weight (lb) |
|--------|-------------|---|-------------|-------------|-----------|-------------|
| SP     | 10.60       |  | R (5390)    | 20.90       | 4.00      | 345.00      |
| CLD    | 10.60       |   |             |             |           |             |
| CILM   | 6.80        |   |             |             |           |             |
| RLL3   | 1.70        |   |             |             |           |             |

Dataset: wseac-1b.db: field/well/run1/pass7  
 Total length: 20.90 ft  
 Total weight: 345.00 lb  
 O.D.: 4.00 in

|   |  |  |
|---|--|--|
|  |  | Company: Seacoast Utility Authority<br>Well: NPB-2B<br>Field: North Palm Beach<br>County: Palm Beach<br>State: Florida<br>Country: USA |
|---|--|--|